

E&D Water Wells

3530 West Spence Ln.
Wasilla, AK 99623
(907) 373-1598 Fax: (907) 357-1598



Borough <i>MATSU</i>	Subdivision <i>ALPINE VIEW PH5.1</i>	Lot <i>TRACT</i>	Block <i>A</i>	Section QTRS.	Section	Township	Range	Meridian <i>SEWARD</i>
Location / Sketch <i>WELL #30</i>				Well Owner <i>GRAND MOUNTAIN VIEW, LLC.</i>				
Depths Measured From: <input checked="" type="checkbox"/> Casing Top <input type="checkbox"/> Ground Surface				Well Depth:		Date Of Completion		
Borehole Data: Material Type & Color				Depth From To		Depth of Hole: <i>120'</i> Ft. Depth of Casing: <i>102'</i> Ft.		<i>3 / 25 / 17</i>
<i>Stick up</i>		<i>0</i>	<i>3</i>	Depth To Static Water Level: <i>35'</i> Ft. Below <input checked="" type="checkbox"/> Top of Casing <input type="checkbox"/> Ground Surface				
<i>sand + GRAVEL</i>		<i>3</i>	<i>24</i>	Date: <i>3 / 25 / 17</i>				
<i>Wet Clay GRAVEL</i>		<i>24</i>	<i>36</i>	Method Of Drilling: <input checked="" type="checkbox"/> Air Rotary <input type="checkbox"/> Cable Tool <input type="checkbox"/> Other: _____				
<i>Wet SANDY CLAY</i>		<i>36</i>	<i>52</i>	Use Of Well: <input checked="" type="checkbox"/> Domestic <input type="checkbox"/> Irrigation <input type="checkbox"/> Monitor <input type="checkbox"/> Public Supply <input type="checkbox"/> Other				
<i>WATER GRAVEL</i>		<i>52</i>	<i>60</i>	Casing Stick-Up: <i>3'</i> Ft. Diam: <i>8"</i> In. to _____ Ft. Casing Type: <i>A53B STEEL</i> - <i>250</i> In. to _____ Ft.				
<i>WATER sand-GRAVEL</i>		<i>60</i>	<i>120</i>	Well Intake Opening Type: <input type="checkbox"/> Open End <input checked="" type="checkbox"/> Screened <input type="checkbox"/> Perforated <input type="checkbox"/> Open Hole				
<div style="font-size: 4em; color: blue;">X</div>				Depths Of Openings: <i>102'</i> To: <i>120'</i> Ft.				
				Screen Type: <i>STAINLESS STEEL</i> In. _____				
				Slot/Mesh Size: <i>60/80</i> Length: <i>20'</i> Ft. _____				
				Gravel Pack Type: <i>NONE</i>				
				Volume Used: _____ Depth to Top: _____				
				Grout Type: <i>Bentonite</i>				
				Depth: From _____ Ft. to _____ Ft. _____				
				Development Method: <i>AIR</i>				
Duration: <i>4 hours</i>								
Pumping Level & Yield: _____ Ft. After _____ Hrs. Pumping <i>?</i> gpm								
Pump Intake Depth: _____ Ft. Horsepower: _____								
Well Disinfected Upon Completion? <input type="checkbox"/> Yes <input checked="" type="checkbox"/> No								

CONTRACTOR INFORMATION:

E & D WATER WELLS
Registered Business Name
Ed Bean *3-25-17*
Signature of Authorization Representative Date

REMARKS: *to be test pumped*
Bentonite was added to casing
JOB # 034032517

Wheaton Water Well, Inc.

1190 N. Wasilla-Fishhook Road
Wasilla, AK 99654
(907)376-2041

WELL FLOW TEST

Project: Carr-Gottstein Properties
Well Site: Alpine View Well #30
Well Depth: 120 ft.
Static Water Level: 35 ft.
Date Drilled: 3-25-2017

Date of Test: 4-4-2017
Casing: 100' of 8" ID Steel
Screen: 20' of 60 & 80 slot
Date Level Taken: 3-25-2017
Drilled By: E&D Water Wells

Elapsed Time In Minutes	Depth To Water	Gallons Per Minute	Draw Down Well #29	Draw Down Kennerson Well	Remarks
0	32.77'	0	38.33'	35.50'	Start pump 11:08 AM 4-4-2017
1	37.62'	300			
2	35.38'	220			
3	35.03'	200			
4	35.74'	260			
7	35.83'	250			
8	35.70'	250			
9	35.71'	250			
10	35.72'	250			
15	35.75'	250	38.71'	35.50'	
20	35.75'	250			
25	35.75'	250			
30	35.75'	250	38.74'	35.51'	
60	35.76'	250	38.73'	35.52'	1 hour
90	35.78'	250	38.77'	35.53'	
120	35.80'	250	38.79'	35.56'	2 hours
150	35.82'	250	38.78'	35.56'	
180	35.83'	250	38.78'	35.60'	3 hours
210	35.85'	250	38.80'	35.61'	← HALLER ENGR.
240	35.85'	250	38.80'	35.63'	4 hours
300	35.86'	250	38.82'	35.68'	5 hours
360	35.86'	250	38.85'	35.72'	
420	35.87'	250	38.86'	35.76'	
480	35.87'	250	38.88'	35.79'	
540	35.88'	250	38.90'	35.83'	
600	35.87'	250	38.94'	35.85'	10 hours
660	35.87'	250	38.93'	35.88'	← HALLER ENGR.
720	35.86'	250	38.96'	35.92'	VERIFIED FLOW RATE
780	35.87'	250	38.97'	35.94'	AT 250 GPM
840	35.87'	250	39.01'	35.97'	

Elapsed Time In Minutes	Depth To Water	Gallons Per Minute	Draw Down Well #29	Draw Down Kennerson Well	Remarks
900	35.87'	250	39.01'	36.00'	15 hours
960	35.86'	250	39.04'	36.02'	
1020	35.88'	250	39.06'	36.04'	
1080	35.87'	250	39.08'	36.07'	
1140	35.87'	250	39.11'	36.10'	
1200	35.87'	250	39.12'	36.10'	20 hours
1260	35.86'	250	39.14'	36.10'	
1320	35.87'	250	39.15'	36.12'	
1380	35.87'	250	39.16'	36.12'	24 hours, stop pump @ 11:08 AM
1440	35.87'	250	39.17'	36.14'	

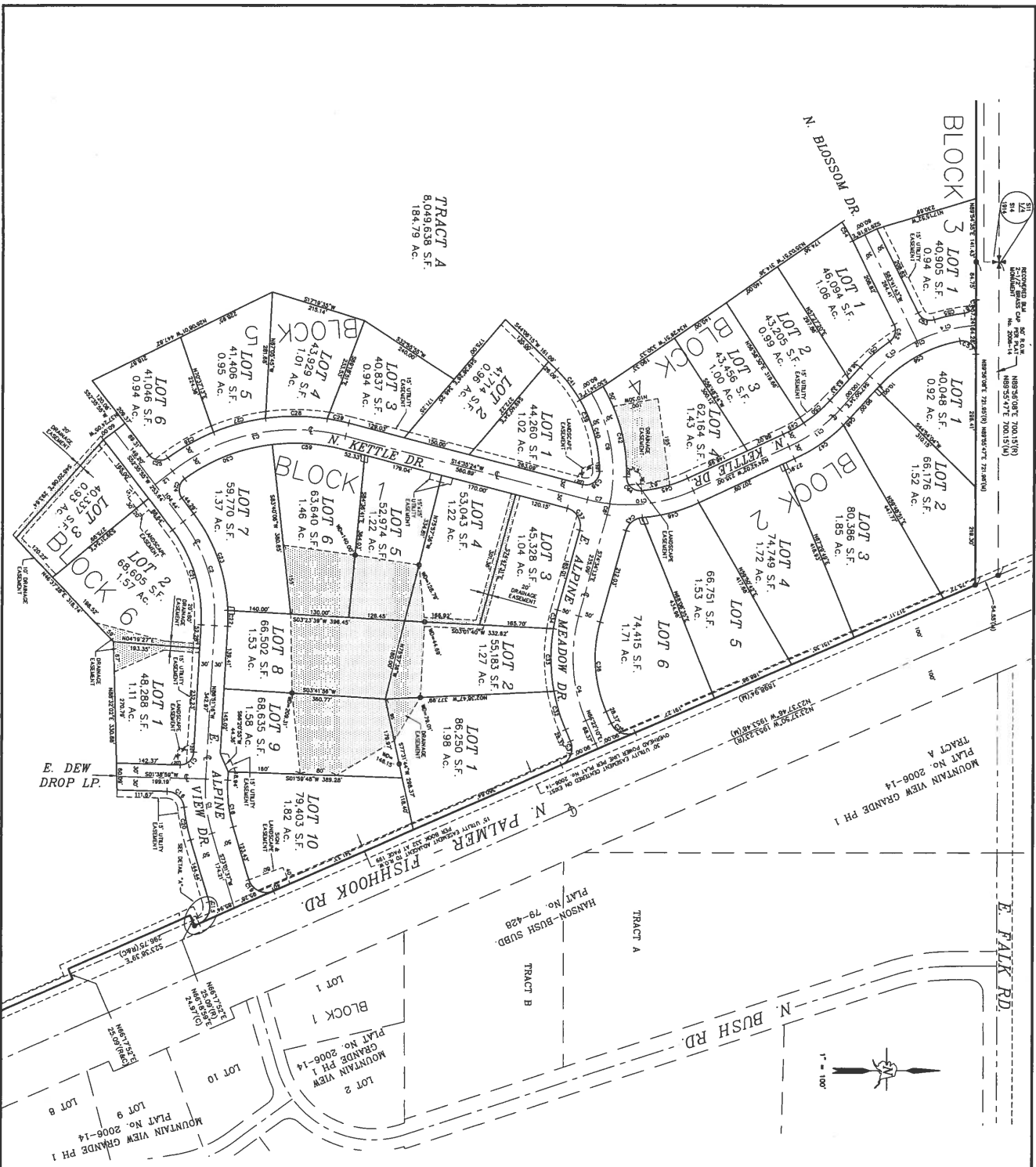
4-5-2017

ET, MIN	Ft	Draw Down/Recovery
0	35.87'	
.5	33.13'	Stopped Pumping
1	33.08'	
1.5	33.03'	
2.5	33.01'	
3	32.99'	= 93% RECOVERY (of 3% DRAWDOWN)
3.5	32.98'	
4	32.97'	
6	32.96'	
8	32.93'	
15	32.93'	= 95% RECOVERY (of 3% DRAWDOWN)

- MONITOR WELL "KENNERSON" IS LOCATED ON LOT 6 BLOCK 3 TRINITY VIEW, APPROX. 250' N-NW FROM WELL #30
- MONITOR WELL #29 LOCATED 100' DUE NORTH
- TESTING @ 250 GPM RESULTED IN A MAXIMUM DRAWDOWN OF 3%

NOTES ADDED BY: CURT KELLER PE FROM FIELD NOTES, PHOTOS

WELL PLOW TEST BY: BRIAN WILKIE, WHEATON WATER WELLS

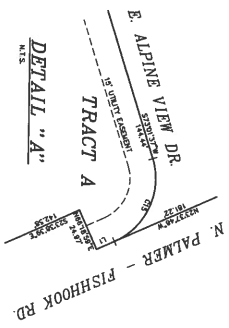


TRACT A
8,099,638 S.F.
184.79 AC.

LINE	LENGTH	BEARING
1	10.00	S 89° 59' 59" W
2	10.00	S 89° 59' 59" W
3	10.00	S 89° 59' 59" W
4	10.00	S 89° 59' 59" W
5	10.00	S 89° 59' 59" W
6	10.00	S 89° 59' 59" W
7	10.00	S 89° 59' 59" W
8	10.00	S 89° 59' 59" W
9	10.00	S 89° 59' 59" W
10	10.00	S 89° 59' 59" W
11	10.00	S 89° 59' 59" W
12	10.00	S 89° 59' 59" W
13	10.00	S 89° 59' 59" W
14	10.00	S 89° 59' 59" W
15	10.00	S 89° 59' 59" W
16	10.00	S 89° 59' 59" W
17	10.00	S 89° 59' 59" W
18	10.00	S 89° 59' 59" W
19	10.00	S 89° 59' 59" W
20	10.00	S 89° 59' 59" W
21	10.00	S 89° 59' 59" W
22	10.00	S 89° 59' 59" W
23	10.00	S 89° 59' 59" W
24	10.00	S 89° 59' 59" W
25	10.00	S 89° 59' 59" W
26	10.00	S 89° 59' 59" W
27	10.00	S 89° 59' 59" W
28	10.00	S 89° 59' 59" W
29	10.00	S 89° 59' 59" W
30	10.00	S 89° 59' 59" W
31	10.00	S 89° 59' 59" W
32	10.00	S 89° 59' 59" W
33	10.00	S 89° 59' 59" W
34	10.00	S 89° 59' 59" W
35	10.00	S 89° 59' 59" W
36	10.00	S 89° 59' 59" W
37	10.00	S 89° 59' 59" W
38	10.00	S 89° 59' 59" W
39	10.00	S 89° 59' 59" W
40	10.00	S 89° 59' 59" W
41	10.00	S 89° 59' 59" W
42	10.00	S 89° 59' 59" W
43	10.00	S 89° 59' 59" W
44	10.00	S 89° 59' 59" W
45	10.00	S 89° 59' 59" W
46	10.00	S 89° 59' 59" W
47	10.00	S 89° 59' 59" W
48	10.00	S 89° 59' 59" W
49	10.00	S 89° 59' 59" W
50	10.00	S 89° 59' 59" W
51	10.00	S 89° 59' 59" W
52	10.00	S 89° 59' 59" W
53	10.00	S 89° 59' 59" W
54	10.00	S 89° 59' 59" W
55	10.00	S 89° 59' 59" W
56	10.00	S 89° 59' 59" W
57	10.00	S 89° 59' 59" W
58	10.00	S 89° 59' 59" W
59	10.00	S 89° 59' 59" W
60	10.00	S 89° 59' 59" W
61	10.00	S 89° 59' 59" W
62	10.00	S 89° 59' 59" W
63	10.00	S 89° 59' 59" W
64	10.00	S 89° 59' 59" W
65	10.00	S 89° 59' 59" W
66	10.00	S 89° 59' 59" W
67	10.00	S 89° 59' 59" W
68	10.00	S 89° 59' 59" W
69	10.00	S 89° 59' 59" W
70	10.00	S 89° 59' 59" W
71	10.00	S 89° 59' 59" W
72	10.00	S 89° 59' 59" W
73	10.00	S 89° 59' 59" W
74	10.00	S 89° 59' 59" W
75	10.00	S 89° 59' 59" W
76	10.00	S 89° 59' 59" W
77	10.00	S 89° 59' 59" W
78	10.00	S 89° 59' 59" W
79	10.00	S 89° 59' 59" W
80	10.00	S 89° 59' 59" W
81	10.00	S 89° 59' 59" W
82	10.00	S 89° 59' 59" W
83	10.00	S 89° 59' 59" W
84	10.00	S 89° 59' 59" W
85	10.00	S 89° 59' 59" W
86	10.00	S 89° 59' 59" W
87	10.00	S 89° 59' 59" W
88	10.00	S 89° 59' 59" W
89	10.00	S 89° 59' 59" W
90	10.00	S 89° 59' 59" W
91	10.00	S 89° 59' 59" W
92	10.00	S 89° 59' 59" W
93	10.00	S 89° 59' 59" W
94	10.00	S 89° 59' 59" W
95	10.00	S 89° 59' 59" W
96	10.00	S 89° 59' 59" W
97	10.00	S 89° 59' 59" W
98	10.00	S 89° 59' 59" W
99	10.00	S 89° 59' 59" W
100	10.00	S 89° 59' 59" W

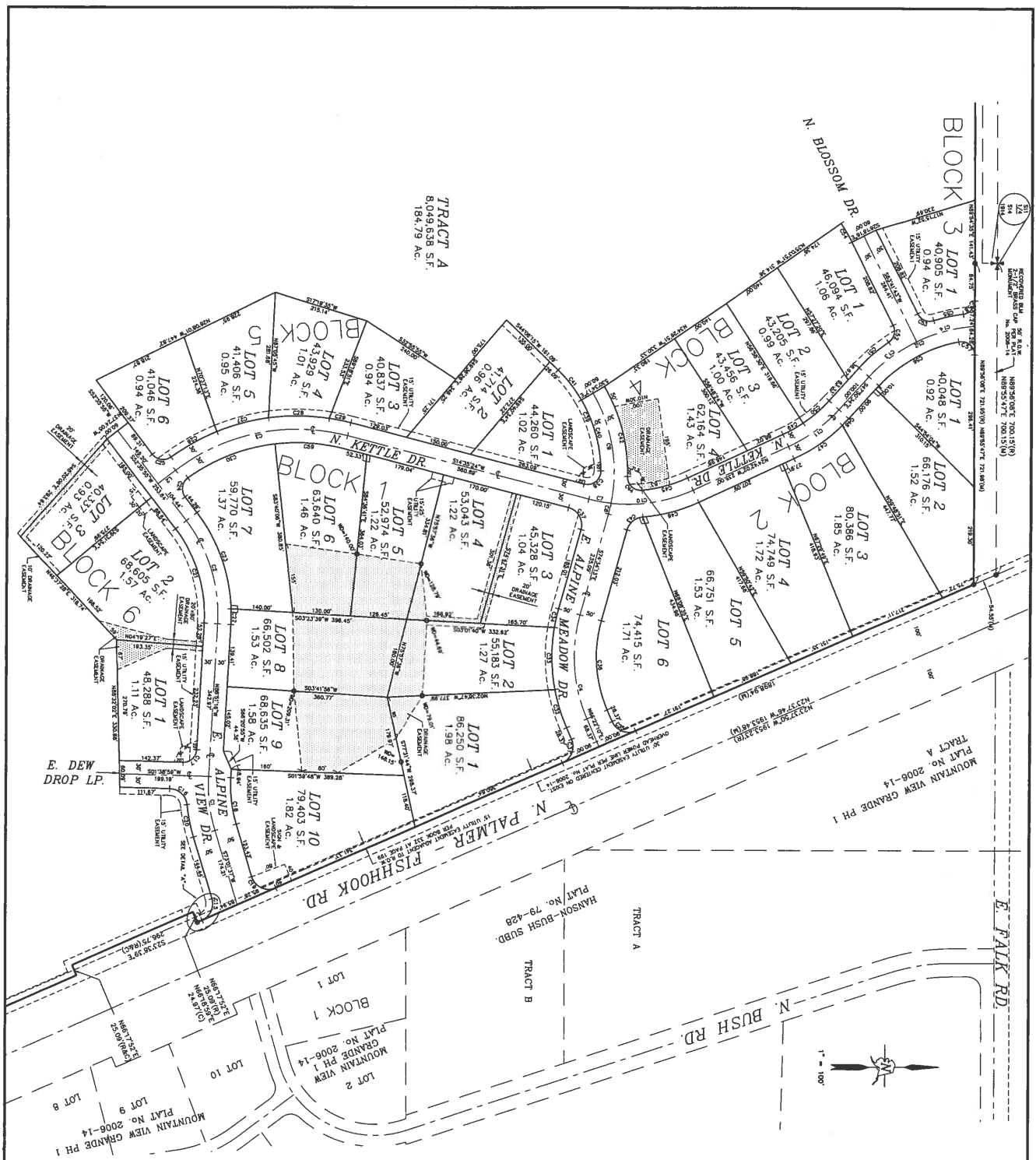


2007-129
 0-31-07
 2007-129
 2007-129



POCKET UTILITY
 EASEMENT DETAIL
 M.T.S.

ALPINE VIEW PHASE I
 A SUBDIVISION OF
 TRACT B, MOUNTAIN VIEW GRANDE PHASE 1, PLAT NO. 2006-14,
 PALMER RECORDING DISTRICT
 LOCATED WITHIN THE N/2 SEC. 14
 T8N, R1E, S14, AK.
 CONTAINING 230718 ACRES
 ALASKA RIM ENGINEERING, INC.
 ENGINEERS-PLANNERS-SURVEYORS
 P.O. BOX 218 PALMER, ALASKA 99572 (907) 746-4288
 W.O. 08000414 DATE: SEPTEMBER, 2007 SCALE: 1" = 100'
 DRAWN BY: JGC FILE: 08000414_P01-P2 SHEET 2 OF 2



LINE	LENGTH	BEARING
1	11.32	S 89° 52' 42" E
2	11.32	S 89° 52' 42" E

CHAIN	LENGTH	STARTING	ENDING	CURVE	BEARING	CHORD	ARC	CHORD	BEARING	CHORD	LENGTH
1	11.32	0.00	11.32	90.00	S 89° 52' 42" E	11.32	0.00	11.32	S 89° 52' 42" E	11.32	11.32
2	11.32	11.32	22.64	90.00	S 89° 52' 42" E	22.64	0.00	22.64	S 89° 52' 42" E	22.64	22.64
3	11.32	22.64	33.96	90.00	S 89° 52' 42" E	33.96	0.00	33.96	S 89° 52' 42" E	33.96	33.96
4	11.32	33.96	45.28	90.00	S 89° 52' 42" E	45.28	0.00	45.28	S 89° 52' 42" E	45.28	45.28
5	11.32	45.28	56.60	90.00	S 89° 52' 42" E	56.60	0.00	56.60	S 89° 52' 42" E	56.60	56.60
6	11.32	56.60	67.92	90.00	S 89° 52' 42" E	67.92	0.00	67.92	S 89° 52' 42" E	67.92	67.92
7	11.32	67.92	79.24	90.00	S 89° 52' 42" E	79.24	0.00	79.24	S 89° 52' 42" E	79.24	79.24
8	11.32	79.24	90.56	90.00	S 89° 52' 42" E	90.56	0.00	90.56	S 89° 52' 42" E	90.56	90.56
9	11.32	90.56	101.88	90.00	S 89° 52' 42" E	101.88	0.00	101.88	S 89° 52' 42" E	101.88	101.88
10	11.32	101.88	113.20	90.00	S 89° 52' 42" E	113.20	0.00	113.20	S 89° 52' 42" E	113.20	113.20
11	11.32	113.20	124.52	90.00	S 89° 52' 42" E	124.52	0.00	124.52	S 89° 52' 42" E	124.52	124.52
12	11.32	124.52	135.84	90.00	S 89° 52' 42" E	135.84	0.00	135.84	S 89° 52' 42" E	135.84	135.84
13	11.32	135.84	147.16	90.00	S 89° 52' 42" E	147.16	0.00	147.16	S 89° 52' 42" E	147.16	147.16
14	11.32	147.16	158.48	90.00	S 89° 52' 42" E	158.48	0.00	158.48	S 89° 52' 42" E	158.48	158.48
15	11.32	158.48	169.80	90.00	S 89° 52' 42" E	169.80	0.00	169.80	S 89° 52' 42" E	169.80	169.80
16	11.32	169.80	181.12	90.00	S 89° 52' 42" E	181.12	0.00	181.12	S 89° 52' 42" E	181.12	181.12
17	11.32	181.12	192.44	90.00	S 89° 52' 42" E	192.44	0.00	192.44	S 89° 52' 42" E	192.44	192.44
18	11.32	192.44	203.76	90.00	S 89° 52' 42" E	203.76	0.00	203.76	S 89° 52' 42" E	203.76	203.76
19	11.32	203.76	215.08	90.00	S 89° 52' 42" E	215.08	0.00	215.08	S 89° 52' 42" E	215.08	215.08
20	11.32	215.08	226.40	90.00	S 89° 52' 42" E	226.40	0.00	226.40	S 89° 52' 42" E	226.40	226.40
21	11.32	226.40	237.72	90.00	S 89° 52' 42" E	237.72	0.00	237.72	S 89° 52' 42" E	237.72	237.72
22	11.32	237.72	249.04	90.00	S 89° 52' 42" E	249.04	0.00	249.04	S 89° 52' 42" E	249.04	249.04
23	11.32	249.04	260.36	90.00	S 89° 52' 42" E	260.36	0.00	260.36	S 89° 52' 42" E	260.36	260.36
24	11.32	260.36	271.68	90.00	S 89° 52' 42" E	271.68	0.00	271.68	S 89° 52' 42" E	271.68	271.68
25	11.32	271.68	283.00	90.00	S 89° 52' 42" E	283.00	0.00	283.00	S 89° 52' 42" E	283.00	283.00
26	11.32	283.00	294.32	90.00	S 89° 52' 42" E	294.32	0.00	294.32	S 89° 52' 42" E	294.32	294.32
27	11.32	294.32	305.64	90.00	S 89° 52' 42" E	305.64	0.00	305.64	S 89° 52' 42" E	305.64	305.64
28	11.32	305.64	316.96	90.00	S 89° 52' 42" E	316.96	0.00	316.96	S 89° 52' 42" E	316.96	316.96
29	11.32	316.96	328.28	90.00	S 89° 52' 42" E	328.28	0.00	328.28	S 89° 52' 42" E	328.28	328.28
30	11.32	328.28	339.60	90.00	S 89° 52' 42" E	339.60	0.00	339.60	S 89° 52' 42" E	339.60	339.60
31	11.32	339.60	350.92	90.00	S 89° 52' 42" E	350.92	0.00	350.92	S 89° 52' 42" E	350.92	350.92
32	11.32	350.92	362.24	90.00	S 89° 52' 42" E	362.24	0.00	362.24	S 89° 52' 42" E	362.24	362.24
33	11.32	362.24	373.56	90.00	S 89° 52' 42" E	373.56	0.00	373.56	S 89° 52' 42" E	373.56	373.56
34	11.32	373.56	384.88	90.00	S 89° 52' 42" E	384.88	0.00	384.88	S 89° 52' 42" E	384.88	384.88
35	11.32	384.88	396.20	90.00	S 89° 52' 42" E	396.20	0.00	396.20	S 89° 52' 42" E	396.20	396.20
36	11.32	396.20	407.52	90.00	S 89° 52' 42" E	407.52	0.00	407.52	S 89° 52' 42" E	407.52	407.52
37	11.32	407.52	418.84	90.00	S 89° 52' 42" E	418.84	0.00	418.84	S 89° 52' 42" E	418.84	418.84
38	11.32	418.84	430.16	90.00	S 89° 52' 42" E	430.16	0.00	430.16	S 89° 52' 42" E	430.16	430.16
39	11.32	430.16	441.48	90.00	S 89° 52' 42" E	441.48	0.00	441.48	S 89° 52' 42" E	441.48	441.48
40	11.32	441.48	452.80	90.00	S 89° 52' 42" E	452.80	0.00	452.80	S 89° 52' 42" E	452.80	452.80
41	11.32	452.80	464.12	90.00	S 89° 52' 42" E	464.12	0.00	464.12	S 89° 52' 42" E	464.12	464.12
42	11.32	464.12	475.44	90.00	S 89° 52' 42" E	475.44	0.00	475.44	S 89° 52' 42" E	475.44	475.44
43	11.32	475.44	486.76	90.00	S 89° 52' 42" E	486.76	0.00	486.76	S 89° 52' 42" E	486.76	486.76
44	11.32	486.76	498.08	90.00	S 89° 52' 42" E	498.08	0.00	498.08	S 89° 52' 42" E	498.08	498.08
45	11.32	498.08	509.40	90.00	S 89° 52' 42" E	509.40	0.00	509.40	S 89° 52' 42" E	509.40	509.40
46	11.32	509.40	520.72	90.00	S 89° 52' 42" E	520.72	0.00	520.72	S 89° 52' 42" E	520.72	520.72
47	11.32	520.72	532.04	90.00	S 89° 52' 42" E	532.04	0.00	532.04	S 89° 52' 42" E	532.04	532.04
48	11.32	532.04	543.36	90.00	S 89° 52' 42" E	543.36	0.00	543.36	S 89° 52' 42" E	543.36	543.36
49	11.32	543.36	554.68	90.00	S 89° 52' 42" E	554.68	0.00	554.68	S 89° 52' 42" E	554.68	554.68
50	11.32	554.68	566.00	90.00	S 89° 52' 42" E	566.00	0.00	566.00	S 89° 52' 42" E	566.00	566.00
51	11.32	566.00	577.32	90.00	S 89° 52' 42" E	577.32	0.00	577.32	S 89° 52' 42" E	577.32	577.32
52	11.32	577.32	588.64	90.00	S 89° 52' 42" E	588.64	0.00	588.64	S 89° 52' 42" E	588.64	588.64
53	11.32	588.64	600.00	90.00	S 89° 52' 42" E	600.00	0.00	600.00	S 89° 52' 42" E	600.00	600.00
54	11.32	600.00	611.32	90.00	S 89° 52' 42" E	611.32	0.00	611.32	S 89° 52' 42" E	611.32	611.32
55	11.32	611.32	622.64	90.00	S 89° 52' 42" E	622.64	0.00	622.64	S 89° 52' 42" E	622.64	622.64
56	11.32	622.64	633.96	90.00	S 89° 52' 42" E	633.96	0.00	633.96	S 89° 52' 42" E	633.96	633.96
57	11.32	633.96	645.28	90.00	S 89° 52' 42" E	645.28	0.00	645.28	S 89° 52' 42" E	645.28	645.28
58	11.32	645.28	656.60	90.00	S 89° 52' 42" E	656.60	0.00	656.60	S 89° 52' 42" E	656.60	656.60
59	11.32	656.60	667.92	90.00	S 89° 52' 42" E	667.92	0.00	667.92	S 89° 52' 42" E	667.92	667.92
60	11.32	667.92	679.24	90.00	S 89° 52' 42" E	679.24	0.00	679.24	S 89° 52' 42" E	679.24	679.24
61	11.32	679.24	690.56	90.00	S 89° 52' 42" E	690.56	0.00	690.56	S 89° 52' 42" E	690.56	690.56
62	11.32	690.56	701.88	90.00	S 89° 52' 42" E	701.88	0.00	701.88	S 89° 52' 42" E	701.88	701.88
63	11.32	701.88	713.20	90.00	S 89° 52' 42" E	713.20	0.00	713.20	S 89° 52' 42" E	713.20	713.20
64	11.32	713.20	724.52	90.00	S 89° 52' 42" E	724.52	0.00	724.52	S 89° 52' 42" E	724.52	724.52
65	11.32	724.52	735.84	90.00	S 89° 52' 42" E	735.84	0.00	735.84	S 89° 52' 42" E	735.84	735.84
66	11.32	735.84	747.16	90.00	S 89° 52' 42" E	747.16	0.00	747.16	S 89° 52' 42" E	747.16	747.16
67	11.32	747.16	758.48	90.00	S 89° 52' 42" E	758.48	0.00	758.48	S 89° 52' 42" E	758.48	758.48
68	11.32	758.48	769.80	90.00	S 89° 52' 42" E	769.80	0.00	769.80	S 89° 52' 42" E	769.80	769.80
69	11.32	769.80	781.12	90.00	S 89° 52' 42" E	781.12	0.00	781.12	S 89° 52' 42" E	781.12	781.12
70	11.32	781.12	792.44	90.00	S 89° 52' 42" E	792.44	0.00	792.44	S 89° 52' 42" E	792.44	792.44
71	11.32	792.44	803.76	90.00	S 89° 52' 42" E	803.76	0.00	803.76	S 89° 52' 42" E	803.76	803.76
72	11.32	803.76	815.08	90.00	S 89° 52' 42" E	815.08	0.00	815.08	S 89° 52' 42" E	815.08	815.08
73	11.32	815.08	826.40	90.00	S 89° 52' 42" E	826.40	0.00	826.40	S 89° 52' 42" E	826.40	826.40
74	11.32	826.40	837.72	90.00	S 89° 52' 42" E	837.72	0.00	837.72	S 89° 52' 42" E	837.72	837.72
75	11.32	837.72	849.04	90.00	S 89° 52' 42" E	849.04	0.00	849.04	S 89° 52' 42" E	849.04	849.04
76	11.32	849.04	860.36	90.00	S 89° 52' 42" E	860.36	0.00	860.36	S 89° 52' 42" E	860.36	860.36
77	11.32	860.36	871.6								