



E & D Water Wells, LLC

3530 West Spence Ln.
Wasilla, AK 99623
(907) 373-1598 Fax: (907) 357-1598



Borough MAT-SU	Subdivision	Lot	Block	Section QTRS. 841-0	Section	Township	Range	Meridian Seward
Location / Sketch 950 S. TRUNK Rd.				Well Owner 70 Josh JH Construction				
Depths Measured From: <input checked="" type="checkbox"/> Casing Top <input type="checkbox"/> Ground Surface				Well Depth:		Date Of Completion		
Borehole Data: Material Type & Color		Depth From To		Depth of Hole: 355 Ft. Depth of Casing: 335 Ft.		8 / 19 / 14		
Stick up		0	3	Depth To Static Water Level: 126' Ft. Below <input type="checkbox"/> Top of Casing <input type="checkbox"/> Ground Surface				
SAND-COBBLER-GRAVEL		3	41	Date: 8 / 19 / 14				
CLAY GRAVEL		41	175	Method Of Drilling: <input checked="" type="checkbox"/> Air Rotary <input type="checkbox"/> Cable Tool <input type="checkbox"/> Other: _____				
WATER GRAVEL		175	186	Use Of Well: <input type="checkbox"/> Domestic <input type="checkbox"/> Irrigation <input type="checkbox"/> Monitor <input type="checkbox"/> Public Supply <input type="checkbox"/> Other				
SILTY CLAY		186	207	Casing Stick-Up: 3' Ft. Diam: 6" In. to _____ Ft. Casing Type: ASSB SSK .250 In. to _____ Ft.				
SILTY CLAY CLAY GRAVEL		207	330	Well Intake Opening Type: <input type="checkbox"/> Open End <input type="checkbox"/> Screened <input checked="" type="checkbox"/> Perforated <input type="checkbox"/> Open Hole				
SILTY SAND		330	338	Depths Of Openings: 177' To: 185' Ft.				
WATER SILTY SAND <i>Remaining fine</i>		338	340	Screen Type: NONE Diameter: _____ In. _____ Slot/Mesh Size: _____ Length: _____ Ft. _____				
WATER SAND <i>Remaining</i>		340	355	Gravel Pack Type: NONE Volume Used: _____ Depth to Top: _____				
_____		_____		Grout Type: NONE Volume: _____ Depth: From _____ Ft. to _____ Ft. _____				
				Development Method: AIR Duration: 1 HOUR				
				Pumping Level & Yield: 10070 Ft. After 1 Hrs. Pumping 35 gpm				
_____		_____		Pump Intake Depth:		Ft. Horsepower:		
				Well Disinfected Upon Completion? <input type="checkbox"/> Yes <input checked="" type="checkbox"/> No				

CONTRACTOR INFORMATION:

E + D WATER WELLS
Registered Business Name

Eel Bean 8-19-14
Signature of Authorization Representative Date

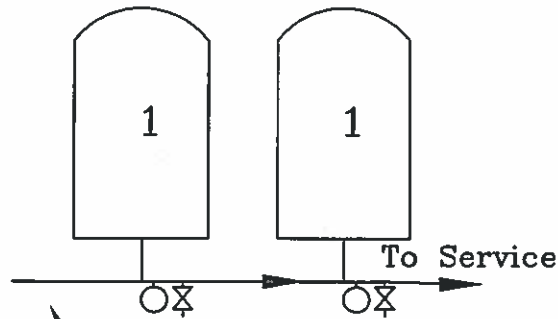
REMARKS: Well was drilled to 360"

PIPE STOP CUT OFF AND PULLED BACK TO 335' AND PERFORATED AT 177 TO 185'.

P:\2014\140035 GARDEN GATE SITE PLANNING\Drawings\140035_pumphouse_mech.dwg, 11/26/2014 1:25:15 PM, STARKER, MA, -2014R.P.L.D

Bed & Breakfast Structure

2 in-line AMTROL WX-350
Pressure Tanks



1.25" HDPE from Pump
House Booster Pump



WELL PROFILE – PROPOSED

LEGAL DESCRIPTION

Alaska Garden Gate Bed & Breakfast

LEGAL DESCRIPTION

T17N, R1E, Section 10, Lot C-005

Not to scale

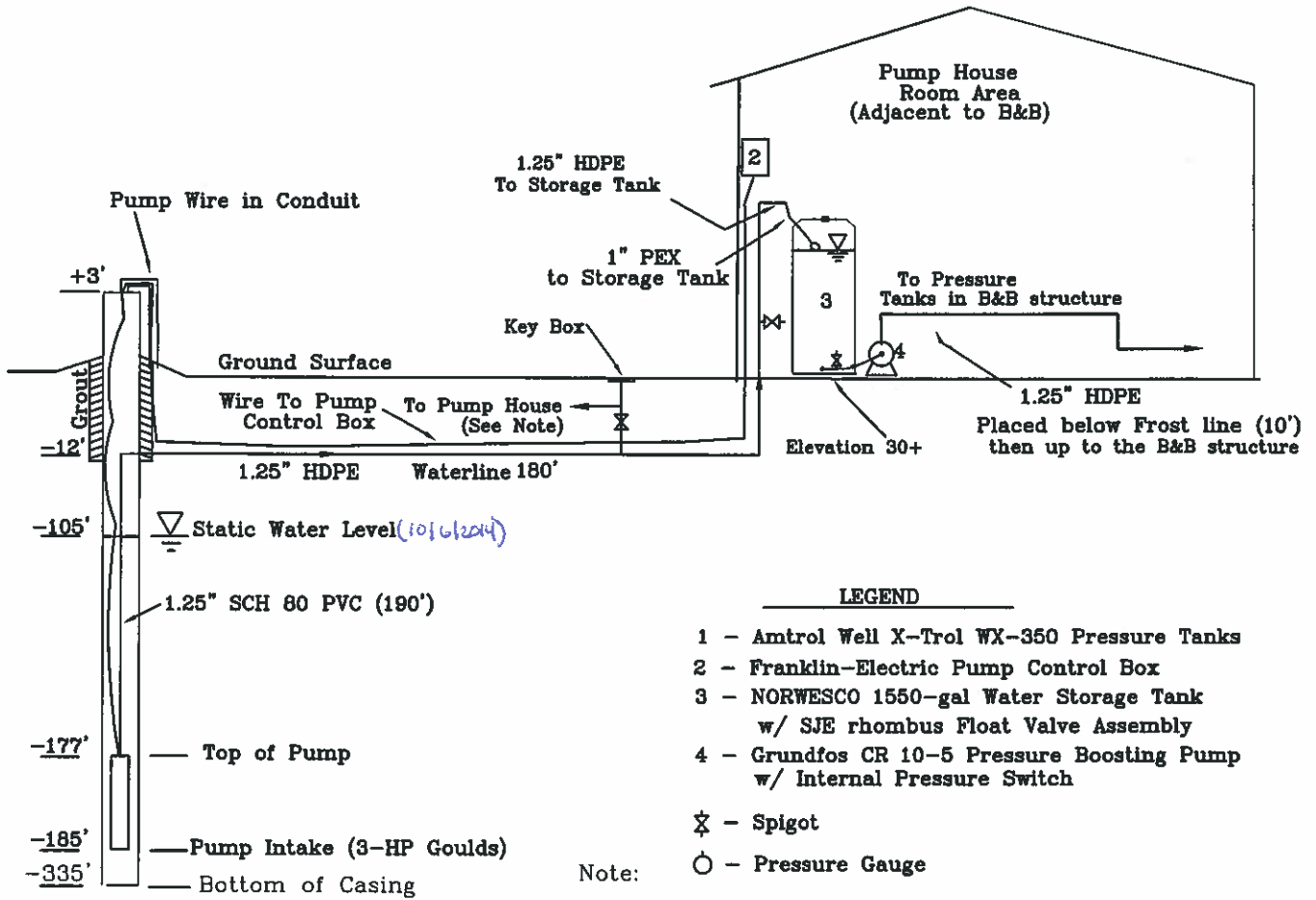
WO: 14-00335

ALASKA RIM ENGINEERING, INC.

DESIGN DATE 11/9/14

COMPLETED DATE TBD

SHEET 1 OF 2



Note: Well Drilled to 355'

- LEGEND**
- 1 - Amtrol Well X-Trol WX-350 Pressure Tanks
 - 2 - Franklin-Electric Pump Control Box
 - 3 - NORWESCO 1550-gal Water Storage Tank w/ SJE rhombus Float Valve Assembly
 - 4 - Grundfos CR 10-5 Pressure Boosting Pump w/ Internal Pressure Switch
- ⊗ - Spigot
- - Pressure Gauge
- Note: 1" HDPE Waterline to B & B Bldg buried at 10' depth.

WELL PROFILE - PROPOSED

LEGAL DESCRIPTION: Alaska Garden Gate Bed & Breakfast

LEGAL DESCRIPTION: T17N, R1E, Section 10, Lot C-005

Not to scale WO: 14-00335

ALASKA RIM ENGINEERING, INC. DESIGN DATE 11/9/14 COMPLETED DATE TBD SHEET 1 OF 2



P:\2014\GARDEN GATE SITE PLAN\DWG\Drawings\US Display Drawings\40053_pumphouse_rml.dwg, 12/12/2014 2:30:41 PM, STANLEY MA-2010UN P.L.L.C.

WELL FLOW TEST ALASKA GARDEN GATE B&B

Date and Time	Elapsed Time	Depth to Water		Drawdown from Static Water level		Total Gallons		Rate of Flow
		Readings	Min	Ft. BRC	Difference	in feet	Meter Reading	Difference
6-Oct-14	8:54 AM	1:00	103	0	0	232100	0	0.0
6-Oct-14	8:55 AM	1:00	109	6	6	232150	50	50.0
6-Oct-14	8:56 AM	1:00	111	2	8	232190	40	40.0
6-Oct-14	8:57 AM	1:00	114	3	11	232230	40	40.0
6-Oct-14	8:58 AM	1:00	116	2	13	232270	40	40.0
6-Oct-14	8:59 AM	1:00	118	2	15	232300	30	30.0
6-Oct-14	9:00 AM	1:00	120	2	17	232350	50	50.0
6-Oct-14	9:01 AM	1:00	122	2	19	232390	40	40.0
6-Oct-14	9:02 AM	1:00	123	1	20	232430	40	40.0
6-Oct-14	9:03 AM	1:00	124	1	21	232470	40	40.0
6-Oct-14	9:04 AM	1:00	124.5	0.5	21.5	232510	40	40.0
6-Oct-14	9:05 AM	1:00	125	0.5	22	232545	35	35.0
6-Oct-14	9:06 AM	1:00	126	2	23	232580	35	35.0
6-Oct-14	9:07 AM	1:00	126.5	0.5	23.5	232610	30	30.0
6-Oct-14	9:08 AM	1:00	127	0.5	24	232650	40	40.0
6-Oct-14	9:09 AM	1:00	127.5	0.5	24.5	232690	40	40.0
6-Oct-14	9:19 AM	10:00	130.5	3	27.5	233050	360	36.0
6-Oct-14	9:29 AM	10:00	133	2.5	30	233415	365	36.5
6-Oct-14	9:39 AM	10:00	135	2	32	233780	365	36.5
6-Oct-14	9:49 AM	10:00	137	2	34	234100	320	32.0
6-Oct-14	9:59 AM	10:00	137.5	0.5	34.5	234460	360	36.0
6-Oct-14	10:09 AM	10:00	138	0.5	35	234840	380	38.0
6-Oct-14	10:24 AM	15	139	1	36	235350	510	34.0

WELL FLOW TEST ALASKA GARDEN GATE B&B

Date and Time	Elapsed Time	Depth to Water		Drawdown from Static Water level	Total Gallons	Rate of Flow	
Readings	Min	Ft. BRC	Difference	in feet	Meter Reading	Difference	gpm
6-Oct-14 10:39 AM	15	139.5	0.5	36.5	235930	580	38.7
6-Oct-14 10:54 AM	15	140	0.5	37	236420	490	32.7
6-Oct-14 11:09 AM	15	140	0	37	237010	590	39.3
6-Oct-14 12:09 PM	60	140	0	37	239120	2110	35.2
6-Oct-14 1:09 PM	60	141.5	1.5	38.5	241280	2160	36.0
6-Oct-14 2:09 PM	60	141.5	0	38.5	243465	2185	36.4
6-Oct-14 3:09 PM	60	142	0.5	39	245590	2125	35.4
6-Oct-14 4:09 PM	60	141.5	-0.5	38.5	247760	2170	36.2
6-Oct-14 5:09 PM	60	142	0.5	39	249990	2230	37.2
6-Oct-14 6:09 PM	60	142.5	0.5	39.5	252010	2020	33.7
6-Oct-14 7:09 PM	60	142	-0.5	39	254165	2155	35.9
6-Oct-14 8:09 PM	60	143	1	40	256340	2175	36.3
6-Oct-14 9:09 PM	60	142.5	-0.5	39.5	258465	2125	35.4
6-Oct-14 10:09 PM	60	143	0.5	40	260610	2145	35.8
6-Oct-14 11:09 PM	60	143	0	40	262765	2155	35.9
7-Oct-14 12:09 AM	60	143.5	0.5	40.5	264940	2175	36.3
7-Oct-14 1:09 AM	60	143.5	0	40.5	267120	2180	36.3
7-Oct-14 2:09 AM	60	143.5	0	40.5	269260	2140	35.7
7-Oct-14 3:09 AM	60	143.5	0	40.5	271495	2235	37.3
7-Oct-14 4:09 AM	60	143	-0.5	40	273575	2080	34.7
7-Oct-14 5:09 AM	60	143	0	40	275790	2215	36.9
7-Oct-14 6:09 AM	60	143.5	0.5	40.5	277985	2195	36.6
7-Oct-14 7:09 AM	60	143.5	0	40.5	280020	2035	33.9

WELL FLOW TEST ALASKA GARDEN GATE B&B

Date and Time	Elapsed Time	Depth to Water		Drawdown from Static Water level	Total Gallons	Rate of Flow	
Readings	Min	Ft. BRC	Difference	in feet	Meter Reading	Difference	gpm
7-Oct-14 8:09 AM	60	144	0.5	41	282165	2145	35.8
7-Oct-14 8:59 AM	50	143	143	40			
7-Oct-14 9:05 AM	6	126	-17	23			
7-Oct-14 9:06 AM	1	124	-2	21			
7-Oct-14 9:08 AM	2	121	-3	18			
7-Oct-14 9:10 AM	2	120	-1	17			
7-Oct-14 9:12 AM	2	118.5	-1.5	15.5			
7-Oct-14 9:16 AM	4	115	-3.5	12			
7-Oct-14 9:22 AM	6	110	-5	7			
7-Oct-14 9:28 AM	6	105	-5	2			
					Total flow gallons	-232100	
					Average flow rate gpm	-166.38	