

WELL DRILLING REPORT

TIME	DEPTH	FORMATION
7/9/91	5'-0"	SAUD
	10'-0"	FINE SAUD
7/10/91	15'-0"	FINE SAUD
	20'-0"	FINE SAUD
7/11/91	25'-0"	FINE SAUD
		SAMPLE #1
10:00 AM	28'-0"	FINE SAUD
		# RIVER
		GRAVEL
		SAMPLE #2
11:00	30'-0"	FINE SAUD
		SAMPLE #3
11:30	32'-0"	SAUD &
		SILT
12:00	35'-0"	SILT & CLAY
		NO WATER.
		BOTTOM OF
		HOLE

INSPECTOR
NOT ON SITE

OWNER OF WELL CITY OF PLATINUM

HOUSE # COMMUNITY WELL #3

POST OFFICE BOX 13, PLATINUM AK 99651

EXACT LOCATION SW 1/4 SECTION 33
T13S, R75W, COPPER RIVER
MERIDIAN

DRILLING COMPANY EBERLE ENTR.

DRILLER MARVIN EBERLE

HELPER KURT EGELHOFER

INSPECTOR KURT EGELHOFER

DRILLING METHOD CABLE TOOL

CIRCULATION MATERIAL WATER

DRILLING STARTED 7/9/91 6 PM

ENDED 7/11/91 4 PM

DEPTH RECORD

MEASURING	KIND	FROM	TO	PERFORATIONS SIZE	FROM	TO
CASING						
BITS						
GROUTING						
GRAVEL PACK						

JOINTS USED 6 TOTAL, 5' LONG

SCREENS USED 25 SLOT, 5' LONG

STATIC WATER LEVEL 9'-8"

CAPACITY 60 gpm

HOW DETERMINED PUMP TEST

SHOW EXACT BOTTOM DEPTH

Marvin Eberle
SIGNED

9-13-91
DATE

30' CASING INSTALLED

3'-6" CUT-OFF, LEAVING 26'-6" CASING

7'-0" SCREEN ASSEMBLY ¹¹ { 1' PACKER
5' 25-SLOT SCREEN
1' TAILPIECE

< SEE ATTACHED SKETCH >

KAMAN

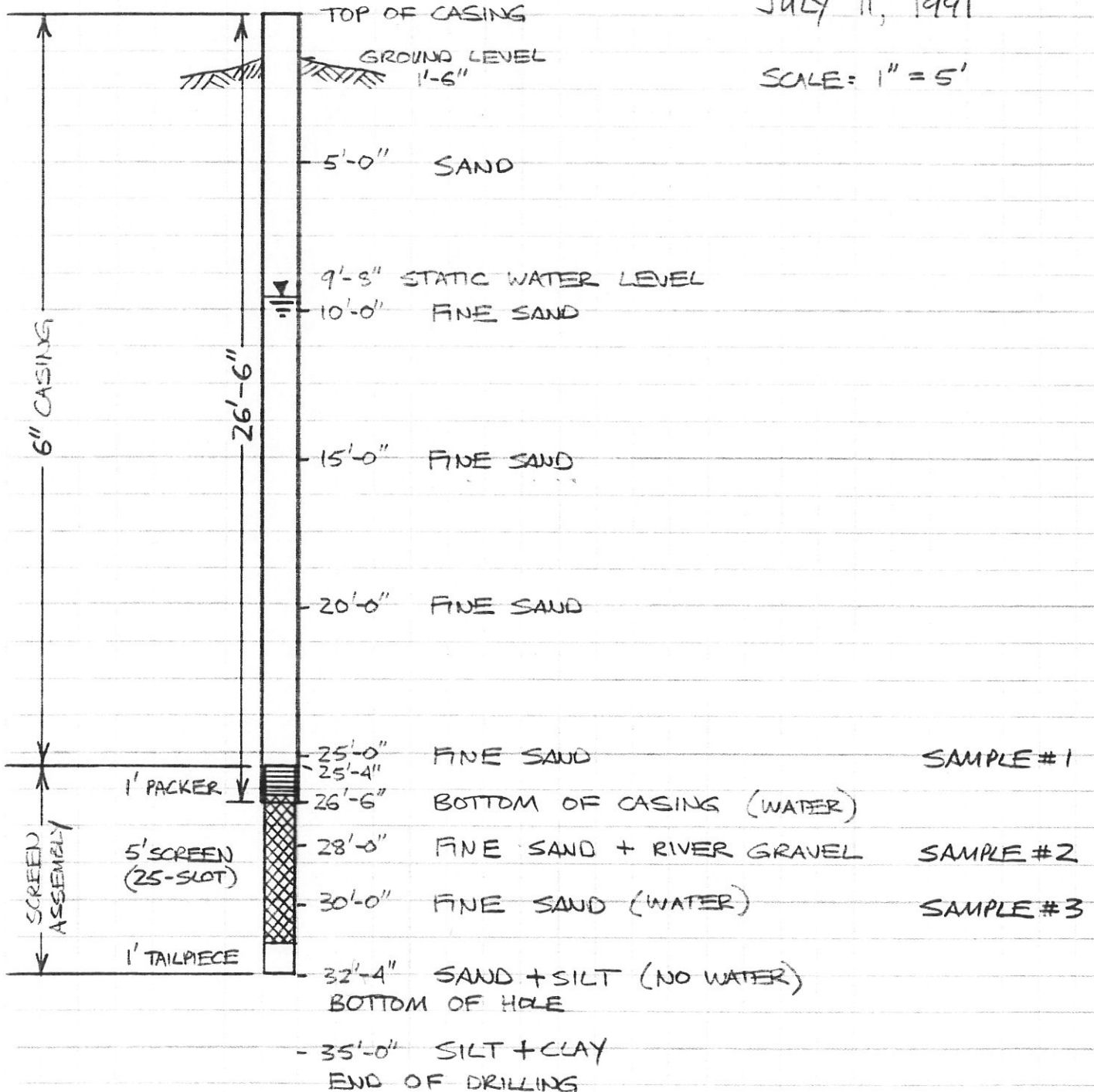
PLATINUM, ALASKA

NEW COMMUNITY

WELL #3

JULY 11, 1991

SCALE: 1" = 5'



ST

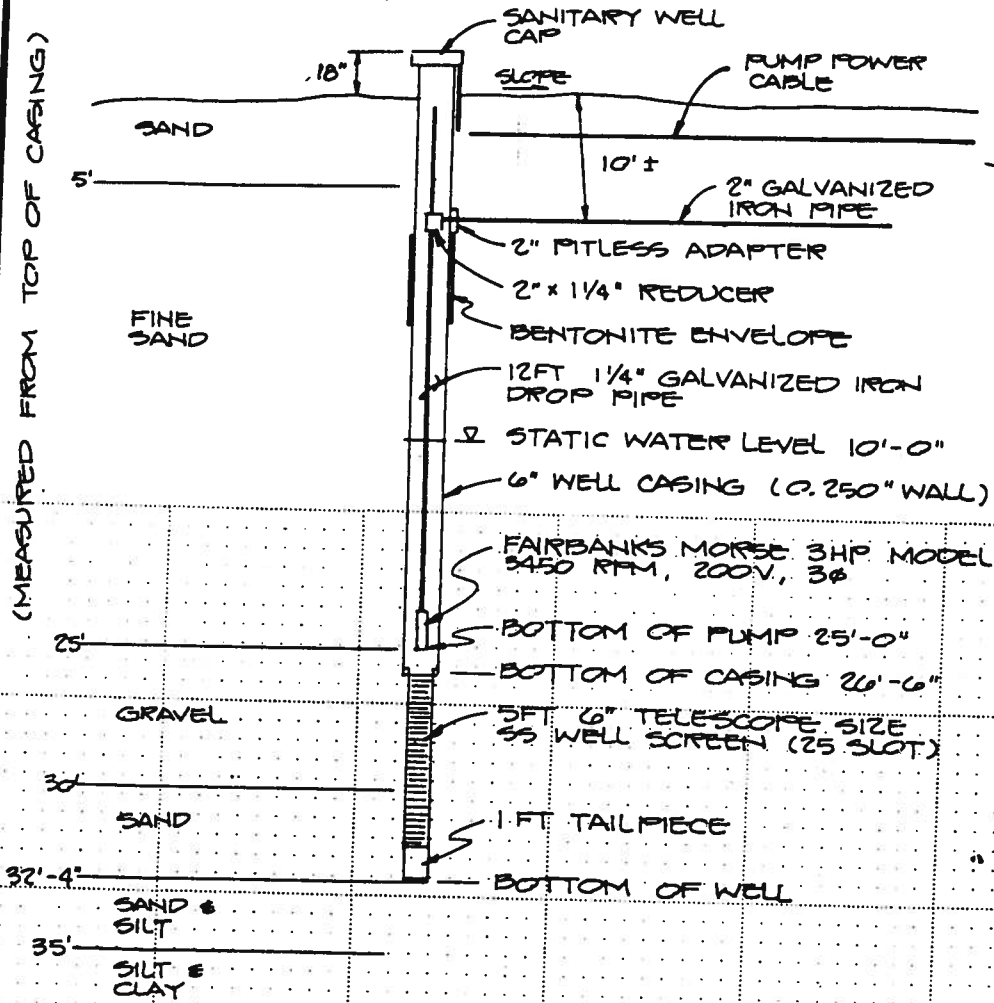
WELL #3 LOG

MP POWER
BLE

20 PIPE CAPTED
" DRAIN HOLE
11'-4"
250 WALL)

(25'-0")
SIZE SS
LOT)

(MEASURED FROM TOP OF CASING)



WATER WELL # 3
DRILLED BY: MARVIN EBERLE
EBERLE ENTERPRISES
DILLINGHAM, ALASKA
DRILLED: 7/9 - 7/11, 1991
TEST PUMPED: 58 GPM @ 5FT OF
DRAWDOWN DURING
4HR PUMP TEST 7/12/91