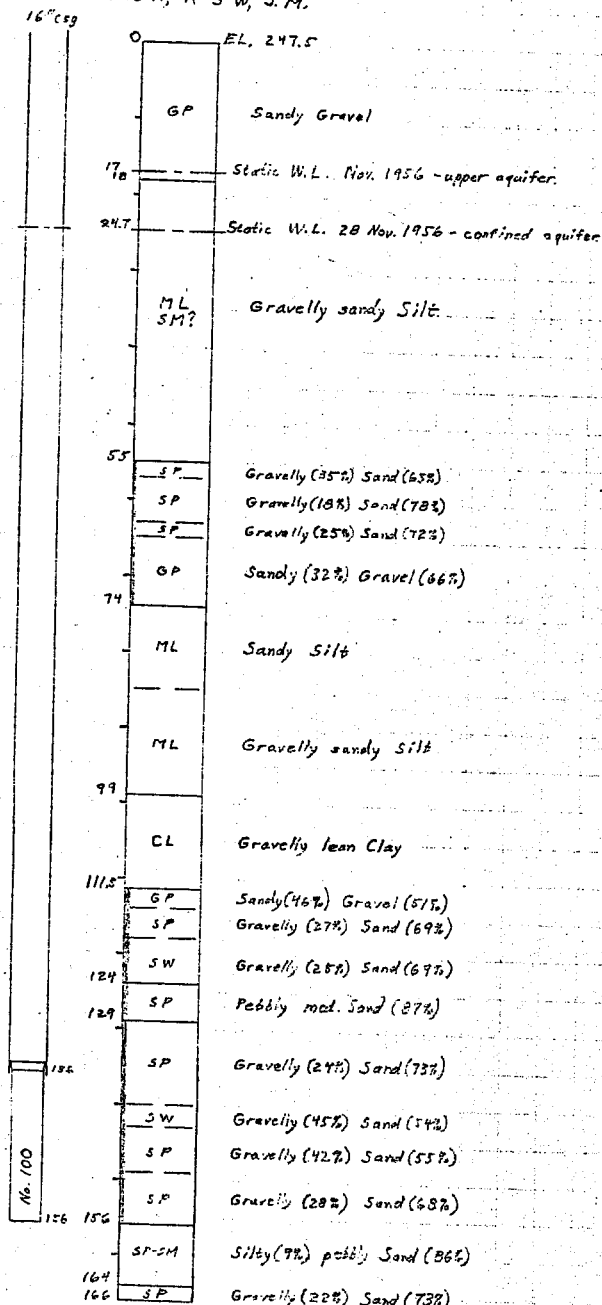


*Guide for Using the Hydrogeologic Classification System for Logging Water Well Boreholes by Thomas M. Hanna NGWA Press

ADL 45840
SEC. 1, T13N, R3W, S.M.

3422

PRODUCTION WELL No. 2 - FT. RICH
N 111, 079; E 124, 549
NW 1/4 of NE 1/4 of SW 1/4 of Sec. 1,
T 13 N, R 3 W, S. M.



For optimum water entrance velocity,
do not exceed 1227 gpm

Well drilled Nov. 1956 by McInroy Drilling Co.
A No. 100 slot screen 16-in. dia. and 20 ft. long was set
with bottom at 156 ft depth and casing was pulled back
to expose screen. Development not recorded. Well
was pumped 34 hours 27-28 Nov. 1956. At 1181 gpm
pumping rate, drawdown was 64 ft.