

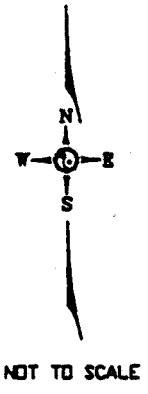
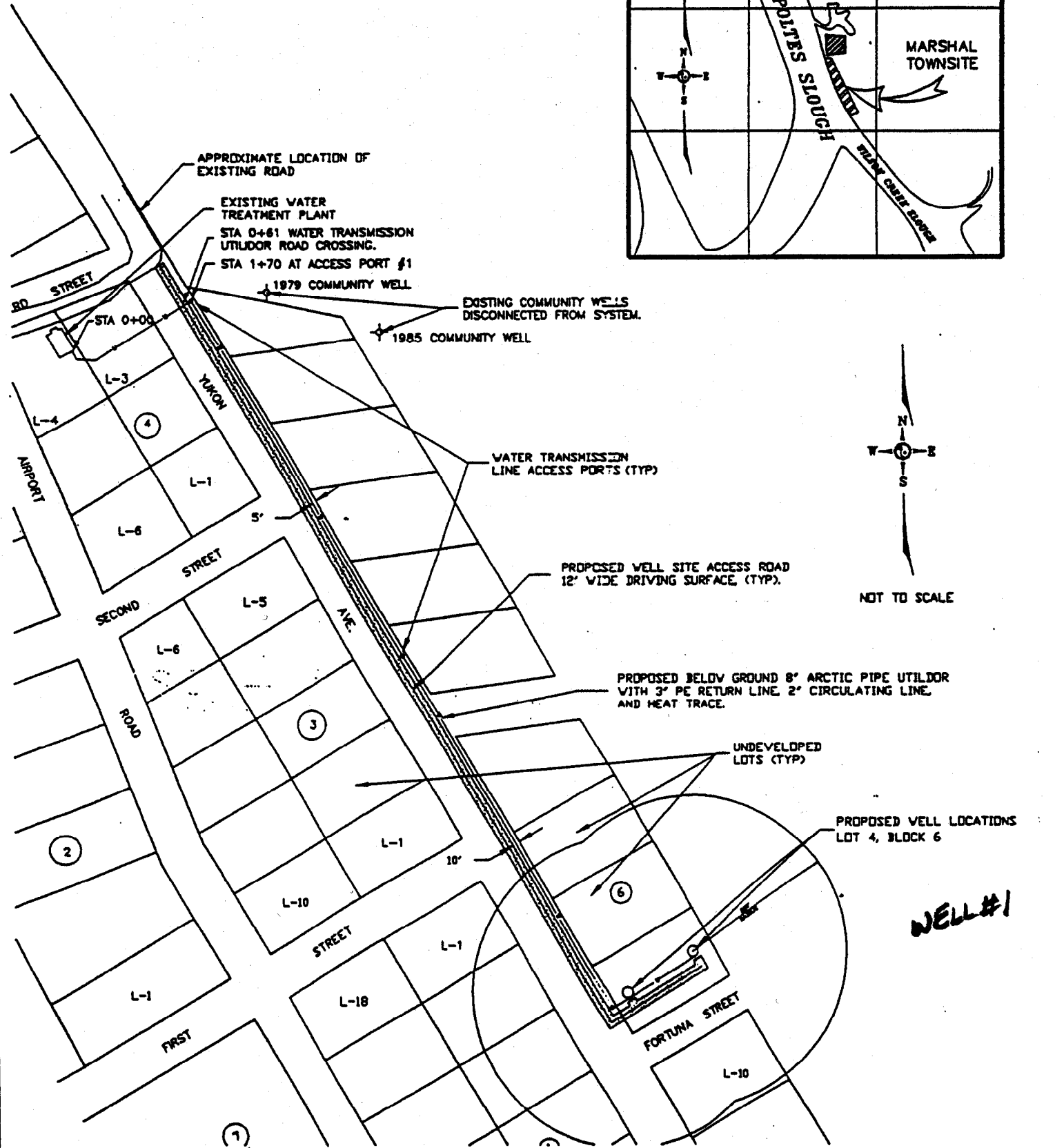
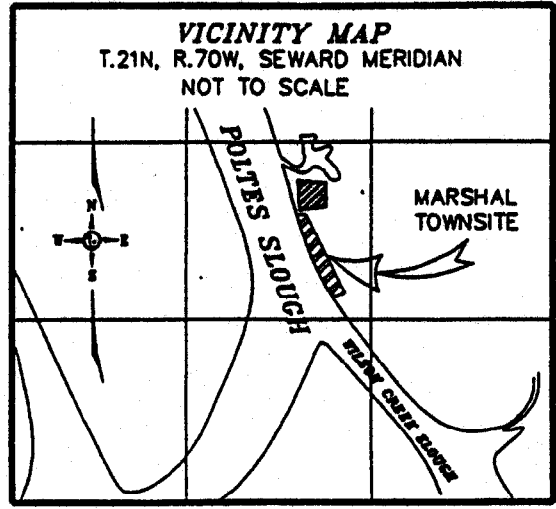


(#1) MARSHALL

0-3		STUB UP	
3-7		OVERBURDEN	LIGHT BROWN
7-59		FROZEN SAND	SOME GRAVEL
59-72		HARD ROCK	GRAY
72-78		FROZEN SAND	LIGHT BROWN
78-87		SOFT GRAY ROCK	
87-97		FROZEN CLAY	
97-112		GRAY ROCK	SOFT
112-131		BROWN ROCK	
131-134		FROZEN CLAY	GRAY
134-168		GRAY ROCK	SOFT
168-174		TAN ROCK	
174-178		GRAY ROCK	SOFT
178-189		PINKISH ROCK	1/2 m
189-191		FRACTURES	
191-204'		PINKISH ROCK	FIRER
204'-232'		GRAY ROCK	
232'-233'		fractured	gray shale
233'-255'		brown	shale
255'-278'		gray	shale
278'-315'		gray	shale
set 140' of perforated			
6" casing the last 15'			
drilled 6" hole			
drilled 10/17/91 per PHS database MAR 4/1/99			

LOCAL NO. SB 21-70-27 DDDA

SB 21-70-27 DDDA (MAY 82 DODB)



DATE	REVISIONS	INITIALS



U.S. DEPARTMENT OF HEALTH & HUMAN SERVICES  
PUBLIC HEALTH SERVICE  
INDIAN HEALTH SERVICE

DIVISION OF SANITATION FACILITIES  
OFFICE OF ENVIRONMENTAL HEALTH AND ENGINEERING  
ALASKA AREA NATIVE HEALTH SERVICE  
222 W 8th AVENUE #63  
ANCHORAGE, ALASKA, 99513-7561

**MARSHALL, ALASKA**

WATER TRANSMISSION LINE & ACCESS ROAD  
U.S.S. 4418, TR 0, BLS 3,4,6,7  
PUBLIC LAW 86-121 PROJECT

DRAWN BY: T.M. [unclear]  
DATE: 11-10-94

FILE NAME: 050-C1&C2  
PLOT SCALE: 1=1

PROJECT NO.  
AN-01-380

SHEET  
1  
OF  
2

TOTAL SHEETS

SIB 21-70-27 DDDA

Well #1

Source 008

Drilling at 48 strokes per min.

210'-215'	2 hr 20 min
215-220	1 hr 40 min
220-225	2 hr
225-230	2 hr 15 min
230-235	2 hr
235-240	2 hr 10 min
240-245	3 hr 30 min
245-250	3 hr 15 min
250-255	2 hr 15 min
255-260	1 hr 20 min
260-275	2 hr 20 min
275-280	2 hr 45 min
280-285	2 hr 40 min
285-290	2 hr
290-295	2 hr 15 min
295-300	2 hr 15 min

drilled 8" to 300' set 140' of 6" casing and drilled to 315'

Well finished 10/9/11