



18301

4/30 9:15 TO 4:45  
10: TO 5

DOWLING-RICE AND ASSOCIATES  
155 Smith Way  
Soldotna, Alaska, 99669

N. Peninsula Rec Dept.

WELL LOG

Date Began ; 7/9/81                      Drilling Company; B. Spires Drilling  
Date Compl.; 7/13/81                      Driller ; Billy Spires

Total Depth; 106'-6"                      Static Water Depth; 80' @ 24 hrs A.D.

Casing; Steel, 6" dia. to 96'

Well Production; 35 gpm  
Drawdown @ Prod. Rate; 17' after 14 hrs pumping,  
full recovery within 1 hr.

Screen set; .030 (96'-101') and .060 (101'-106')

Pump set; Peabody-Barnes 427-TF-300-3, 3 Hp, 3 Ph.  
Pump Rate; 38 gpm @ 28 psi, 30 gpm @ 41 psi

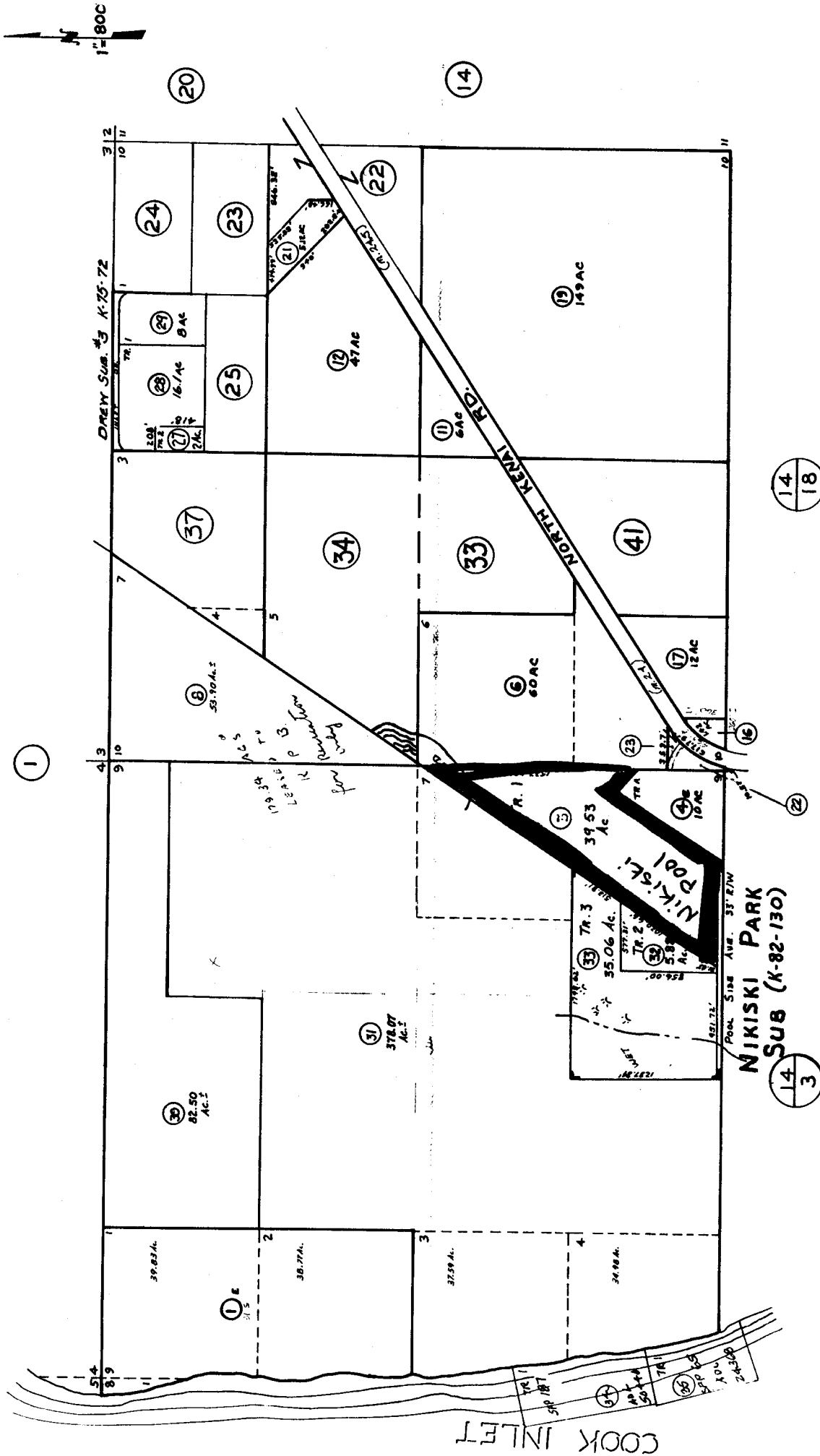
LOG

0' - 1.5' Red-Brown topsoil, silt/loam  
1.5' - 20' Coarse Gravelly Sand, Br., NFS  
20' - 45' Coarse Sand (end 7/9)  
45' - 47' Gravelly Sands (begin 7/10)  
47' - 50' Moist Sand, Some Water  
50' - 52' Blue Cook Inlet Clay/Silts  
52' - 54' Sand, No Water  
54' - 56' Blue Cook Inlet Clay/Silts  
56' - 68' Gravelly Clays to Clays  
68' - 90' Sand, Medium to Coarse (end 7/10)  
90' - 92' Fine Gravels, Damp (begin 7/13)  
92' - 100' Gravels (1"-) and Fine Silty Sands, Damp  
100' - 102' Coal Seam,  
Stopped Water Injection, Began Flow (end 7/13)  
102' - 106'-8" Gravelly Sands (7/14)

90.00  
3665.SB7-12-9PDCD 2-2  
6042 19 151230101

SEC. 5, 9 & 10 T. 7 N., R. 12 W., S.B. & M.

12-21



Assessor's Map Bk. X - Pg.  
Kenai Peninsula Borough, Alaska

NOTE - Assessor's Block Numbers Shown in Ellipses  
Assessor's Parcel Numbers Shown in Circles