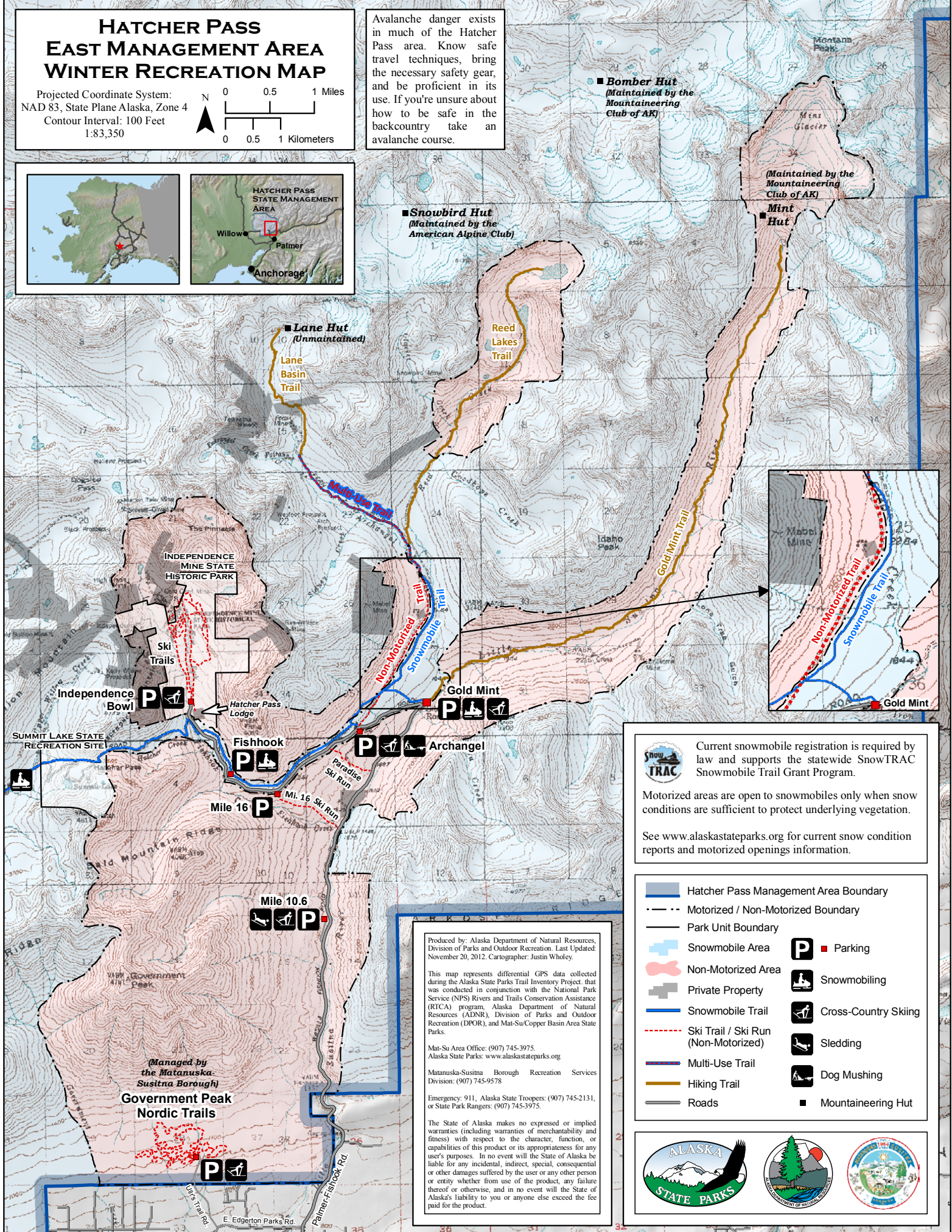


HATCHER PASS EAST MANAGEMENT AREA WINTER RECREATION MAP

Projected Coordinate System:
NAD 83, State Plane Alaska, Zone 4
Contour Interval: 100 Feet
1:83,350



Avalanche danger exists in much of the Hatcher Pass area. Know safe travel techniques, bring the necessary safety gear, and be proficient in its use. If you're unsure about how to be safe in the backcountry take an avalanche course.



Current snowmobile registration is required by law and supports the statewide SnowTRAC Snowmobile Trail Grant Program.

Motorized areas are open to snowmobiles only when snow conditions are sufficient to protect underlying vegetation.

See www.alaskastateparks.org for current snow condition reports and motorized openings information.

- | | | | |
|--|---------------------------------------|--|----------------------|
| | Hatcher Pass Management Area Boundary | | Parking |
| | Motorized / Non-Motorized Boundary | | Snowmobiling |
| | Park Unit Boundary | | Cross-Country Skiing |
| | Snowmobile Area | | Sledging |
| | Non-Motorized Area | | Dog Mushing |
| | Private Property | | Mountaineering Hut |
| | Snowmobile Trail | | |
| | Ski Trail / Ski Run (Non-Motorized) | | |
| | Multi-Use Trail | | |
| | Hiking Trail | | |
| | Roads | | |

Produced by: Alaska Department of Natural Resources, Division of Parks and Outdoor Recreation. Last Updated: November 20, 2012. Cartographer: Justin Wholey.

This map represents differential GPS data collected during the Alaska State Parks Trail Inventory Project, that was conducted in conjunction with the National Park Service (NPS) Rivers and Trails Conservation Assistance (RTCA) program. Alaska Department of Natural Resources (ADNR), Division of Parks and Outdoor Recreation (DPOR), and Mat-Su Copper Basin Area State Parks.

Mat-Su Area Office: (907) 745-3975.
Alaska State Parks: www.alaskastateparks.org

Matanuska-Susitna Borough Recreation Services Division: (907) 745-9578

Emergency: 911, Alaska State Troopers: (907) 745-2131, or State Park Rangers: (907) 745-3975.

The State of Alaska makes no expressed or implied warranties (including warranties of merchantability and fitness) with respect to the character, function, or capabilities of this product or its appropriateness for any user's purposes. In no event will the State of Alaska be liable for any incidental, indirect, special, consequential or other damages suffered by the user or any other person or entity whether from use of the product, any failure thereof or otherwise, and in no event will the State of Alaska's liability to you or anyone else exceed the fee paid for the product.

