

# OHA Survey Unit 2025 Field Season!

OHA SURVEY UNIT:

ADAM BRINKMAN

KATIE OLLESCH

ABBY CHARLES

LISA WRIGHT

COSPLAY SURVEY UNIT:

MARY SINE

MOLLY HERRON

MCKENZIE HERRING

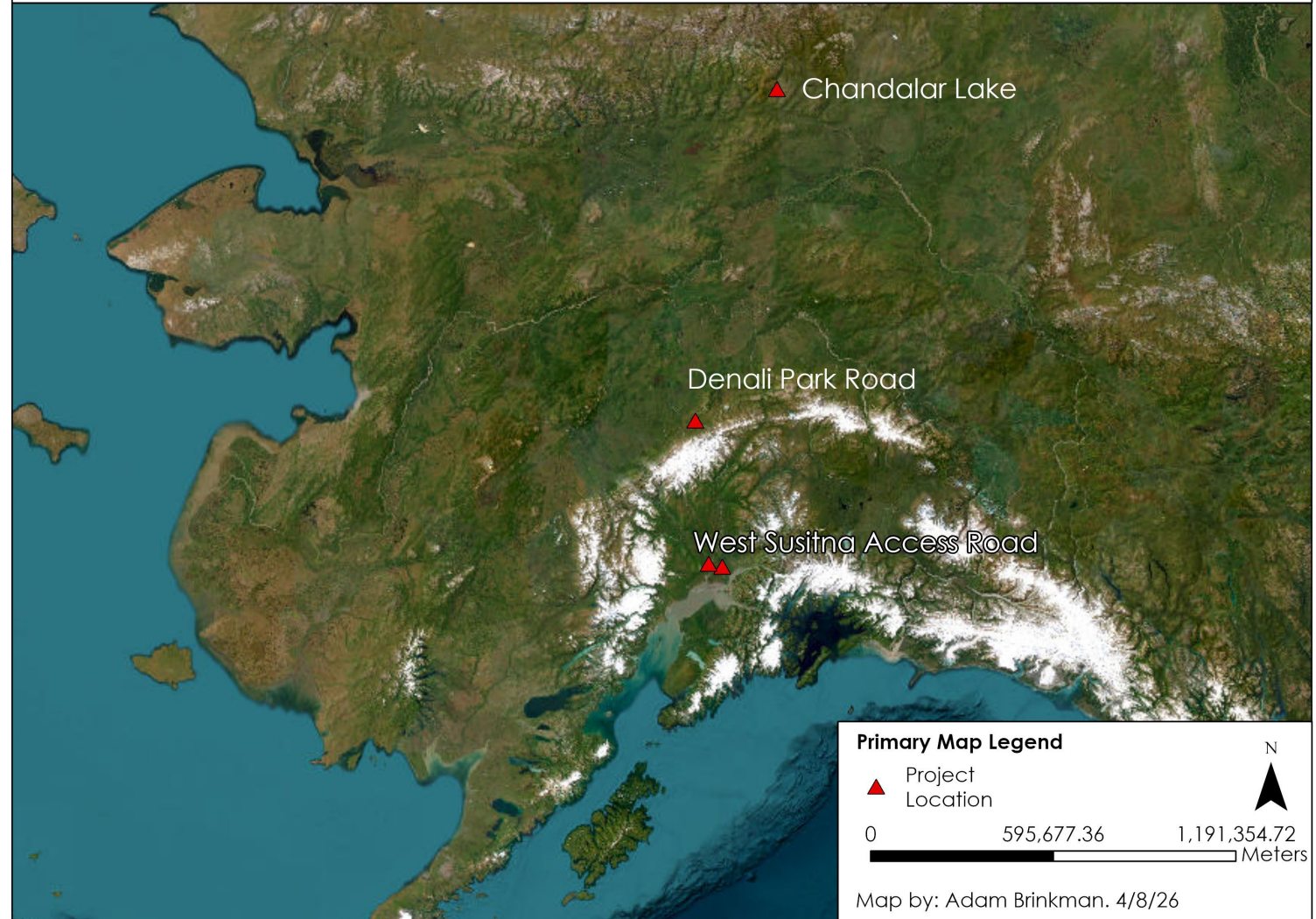


# Survey Projects Across Alaska

Projects with:  
DOT&PF  
NPS  
DMLW

Office of History and Archaeology  
Survey Unit 2025 Projects

State of Alaska  
Department of Natural Resources



# Chandalar Lake

---

- Project sponsored by Division of Mining Land and Water, Alaska State Land Sales
- Four survey areas where parcels will be created for sale.
- Three new sites identified
- Not cursed

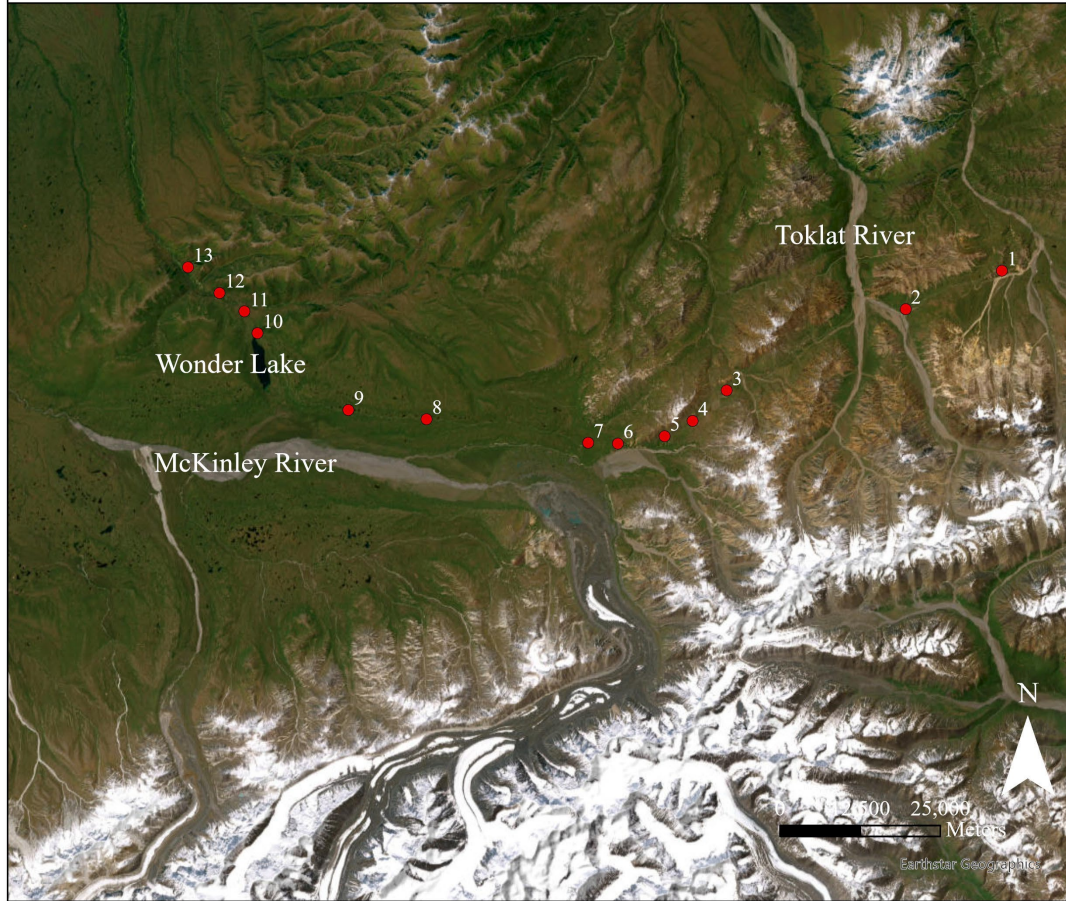


# Chandalar Lake

---

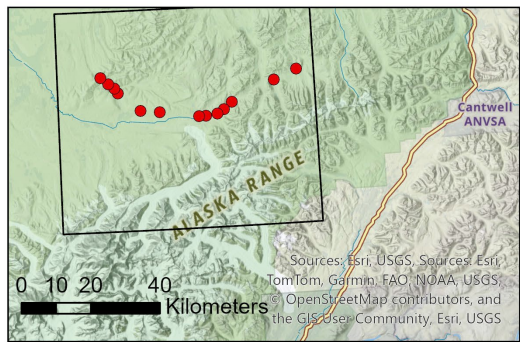
- CHN-00135 - Historic winter trail
- CHN-00136 - Late 20<sup>th</sup> century trap line
- CHN-00137 - 1924-1940 lean-to-shelter camp





# Denali Park Road

- Survey of 13 areas ahead of geophysical boring
- West of the Pretty Rocks road closure
- Major Pripyat vibes



# Denali Park Road

---



Two new sites:

MMK-00019 - Kantishna Ditch

MMK-00249 – Microblade site

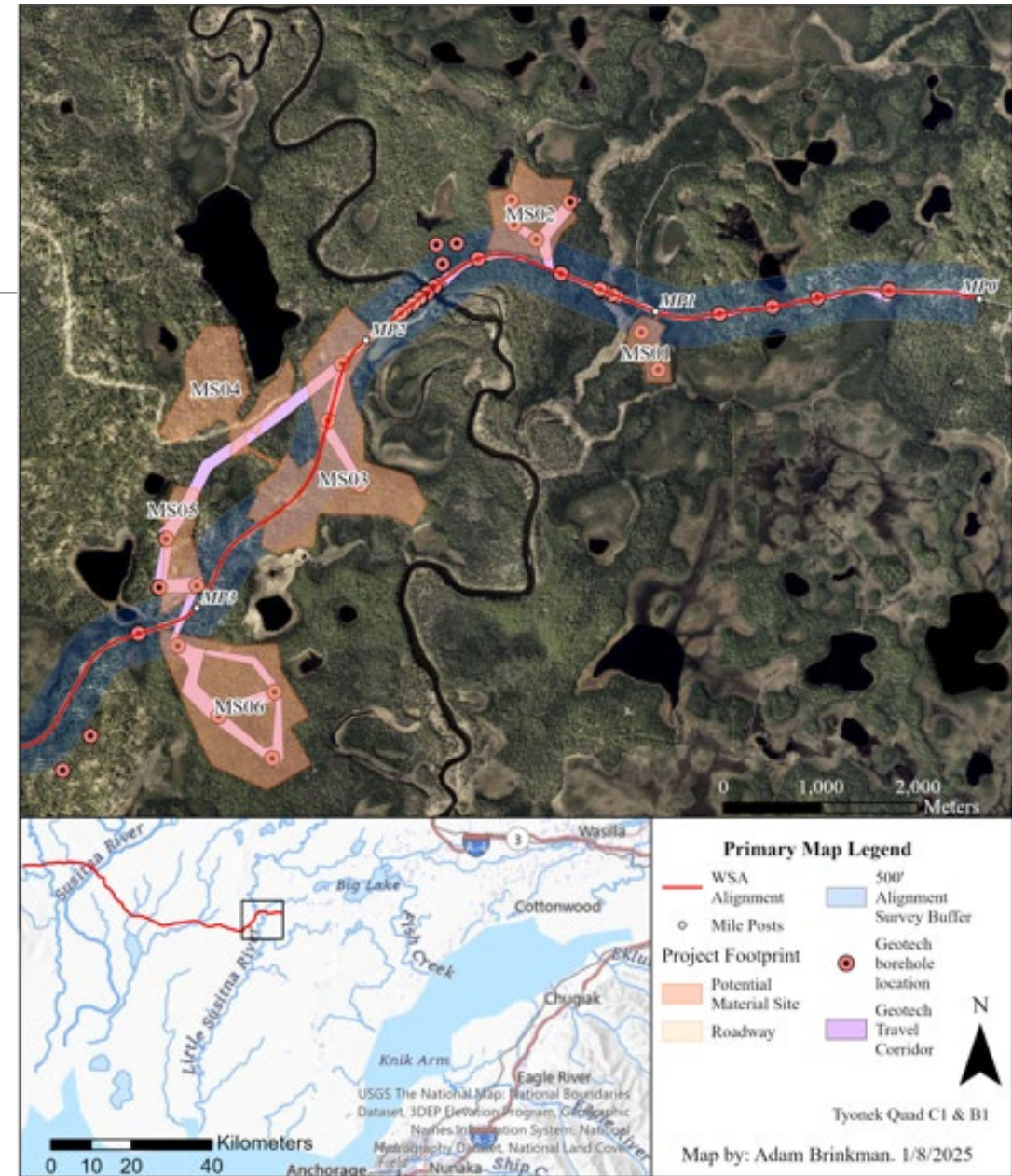


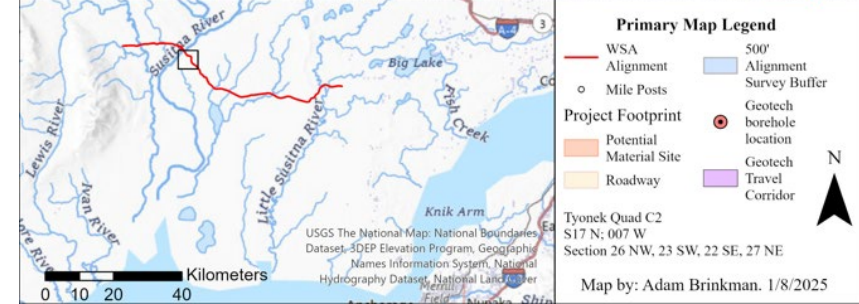
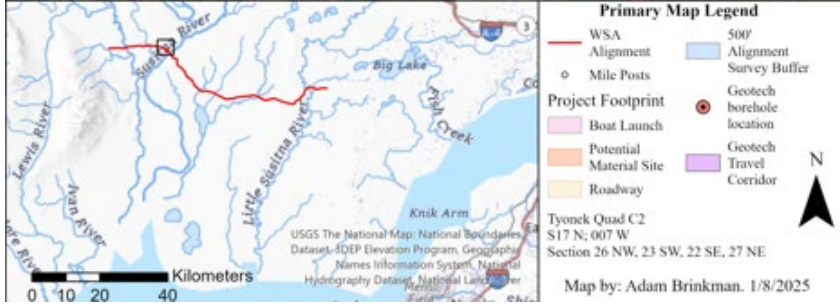
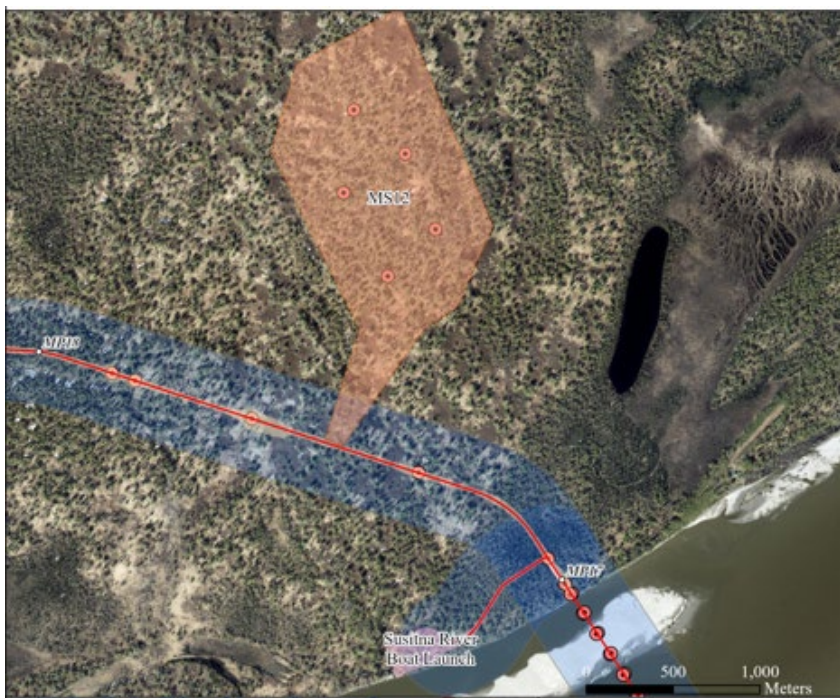
Glorious

---

# West Su Access Road

- Two survey areas
  - MP 0-4
  - Susitna Station



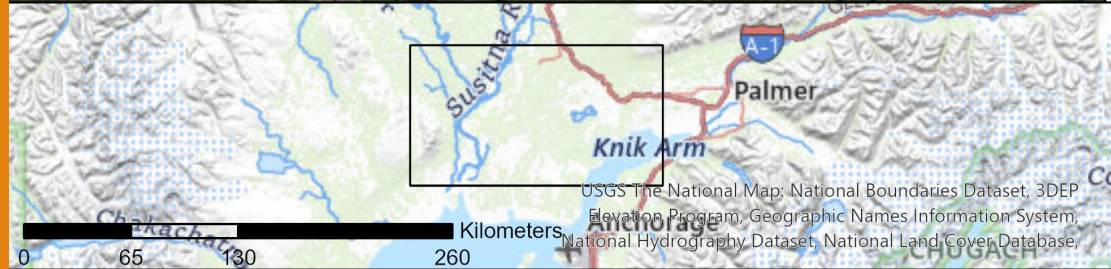
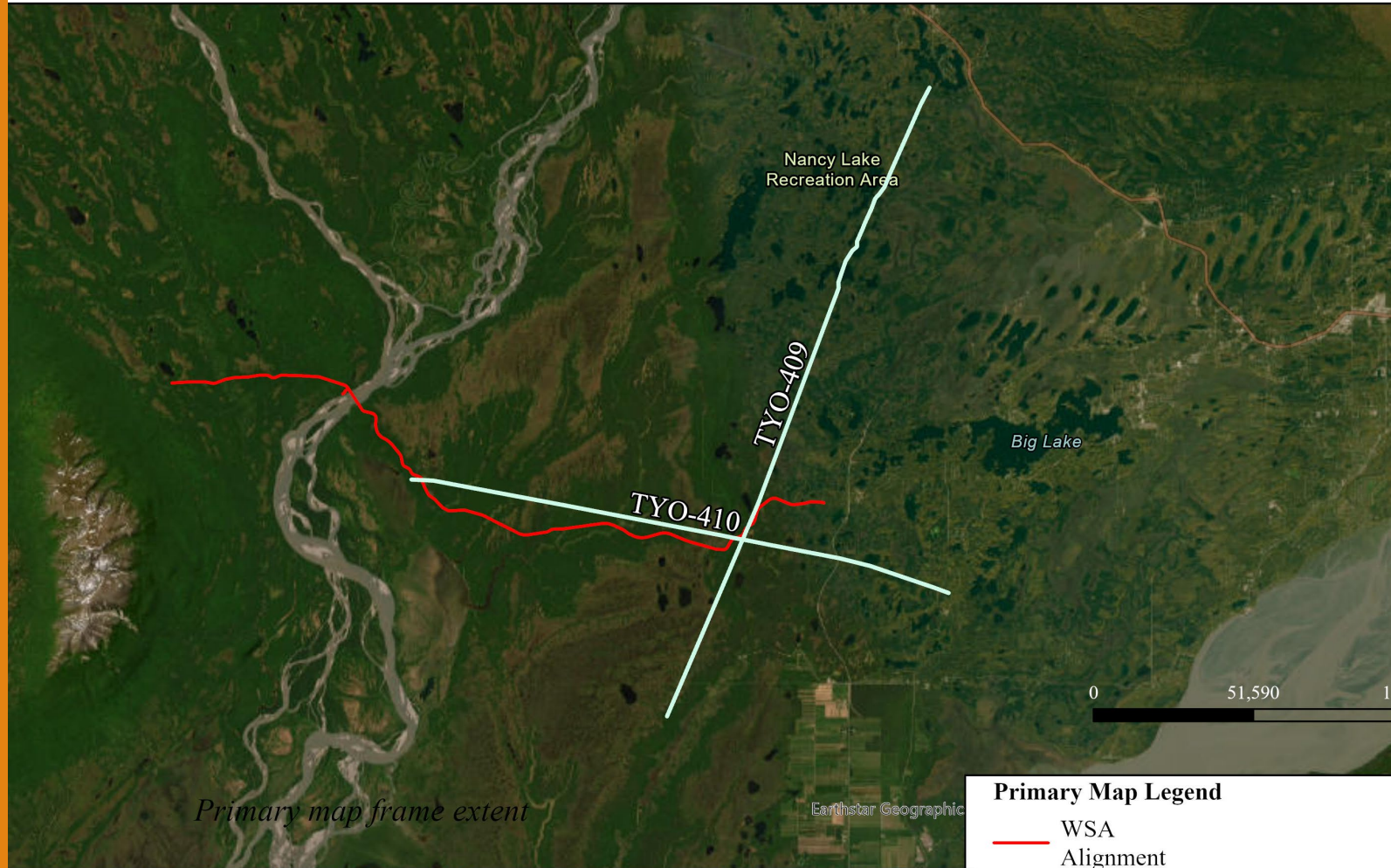


# Susitna Station Sections



# TYO-409 and TYO-410 Site Map

## MP 0-4 Section

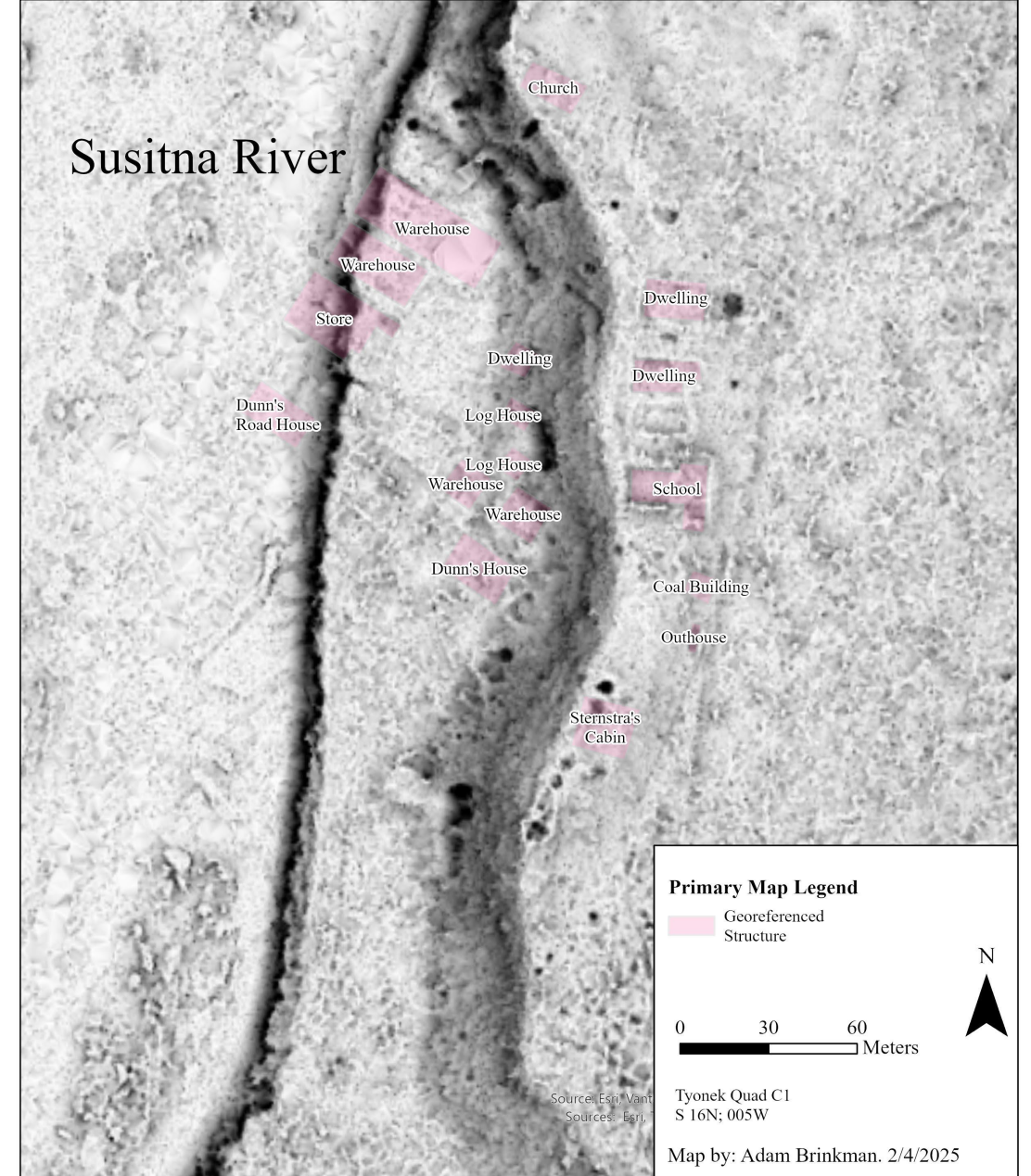
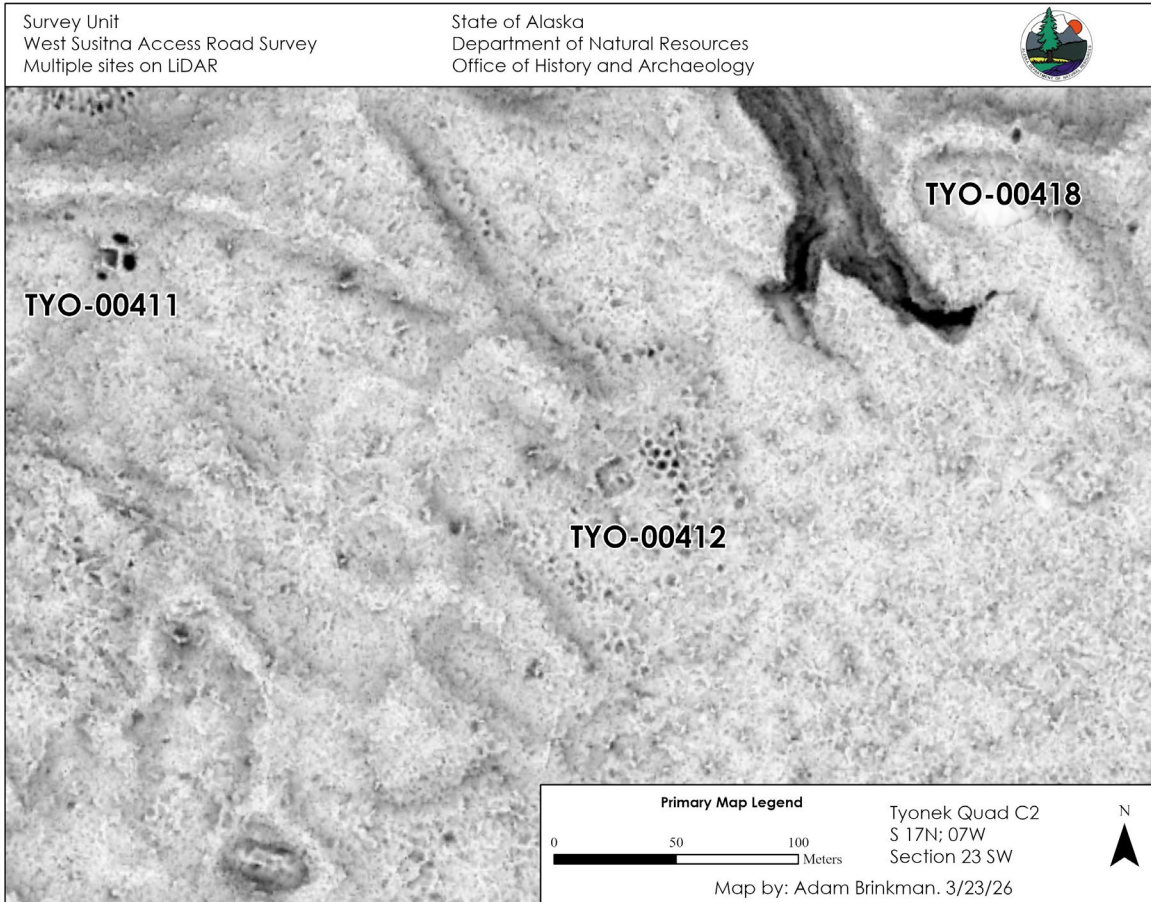


### Primary Map Legend

- WSA Alignment
- Historic seismic line

Map by: Adam Brinkman. 4/8

# LiDAR is inCREDIBLE





# Susitna Station

TYO-415 - multi-room square depression with three associated caches. Summer dwelling

TYO-412 – large square depression with caches. Summer dwelling

Both AMS dated ~1550 cal AD



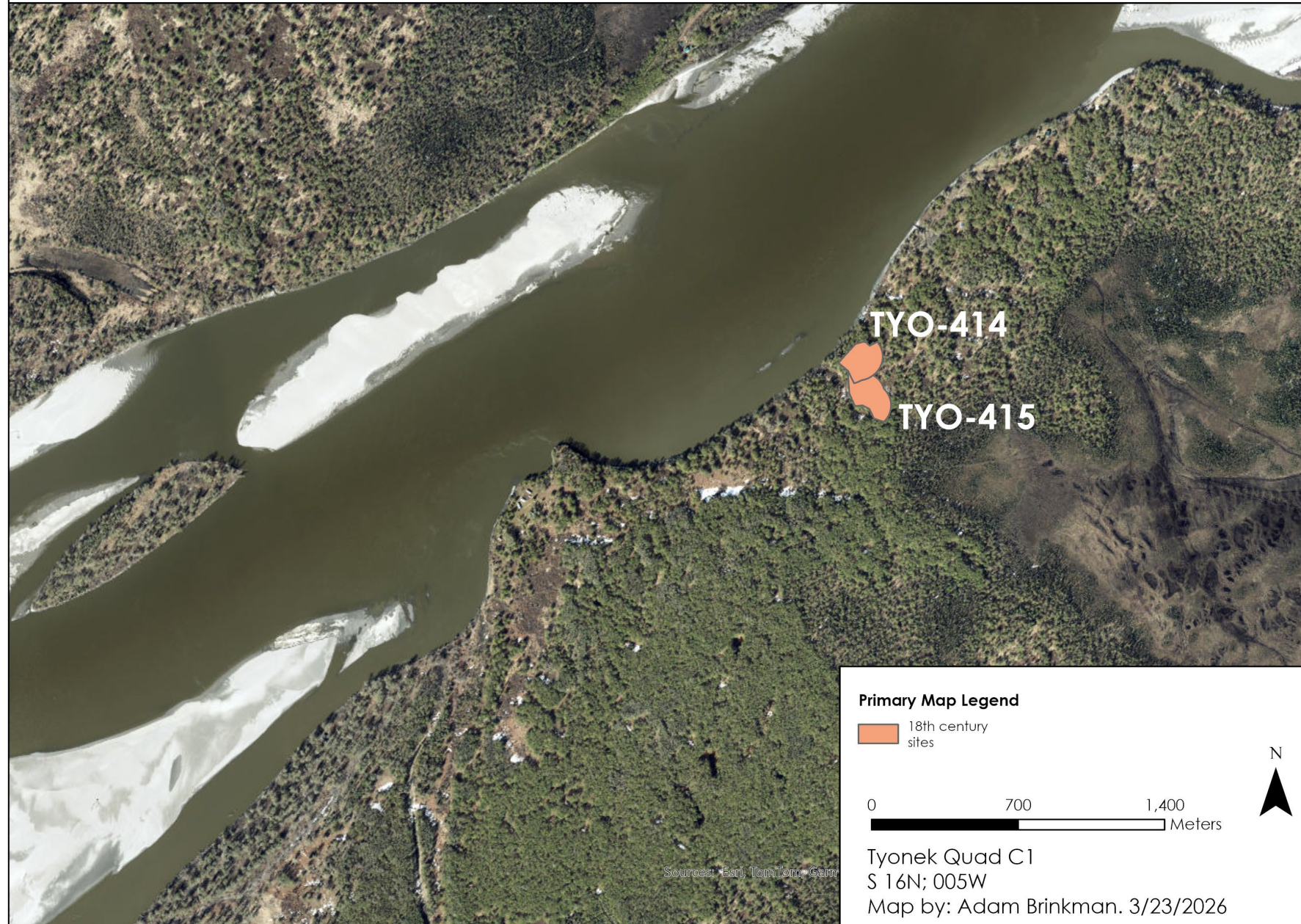


# Susitna Station

TYO-415 - multi-room square depression with three associated caches. Summer dwelling

TYO-414 -square cabin feature with circular outbuilding or cache depressions

Matching white trade beads in layers AMS dated to 1770 cal AD



Sources: Esri, TomTom, Garmin

**Primary Map Legend**

18th century sites

0 700 1,400 Meters

Tyonek Quad C1  
S 16N; 005W  
Map by: Adam Brinkman. 3/23/2026

# Nineteenth Century Susitna Station Settlements



## Susitna Station

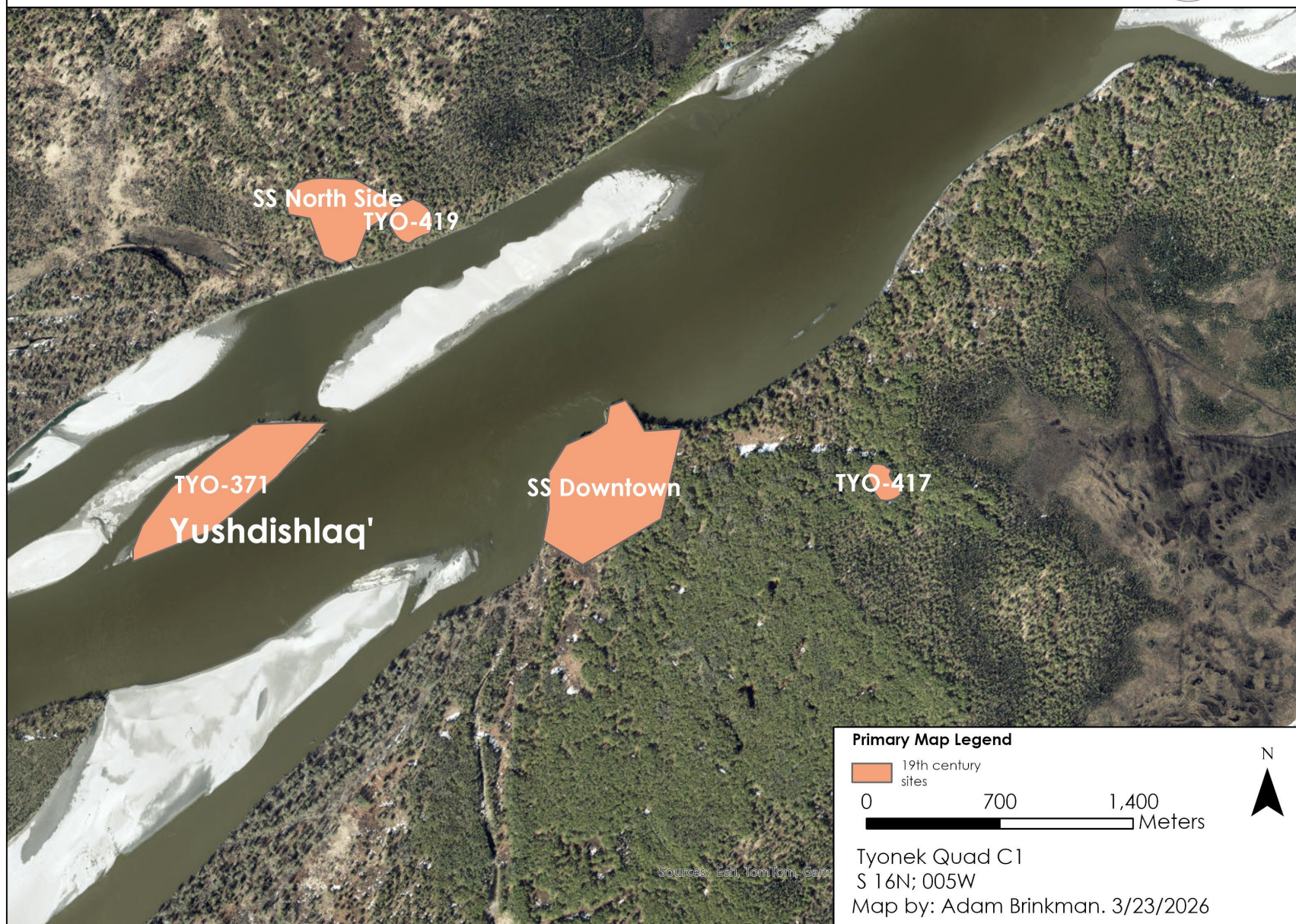
TYO-417 – Circular house depression above possible caches.

TYO-419 – Square depressions with associated caches.

Both had charcoal dated to ~1840 cal AD

TYO-417 also had a lower layer dated to ~1900 cal BC

Historic records show Yushdishlaq' island very important



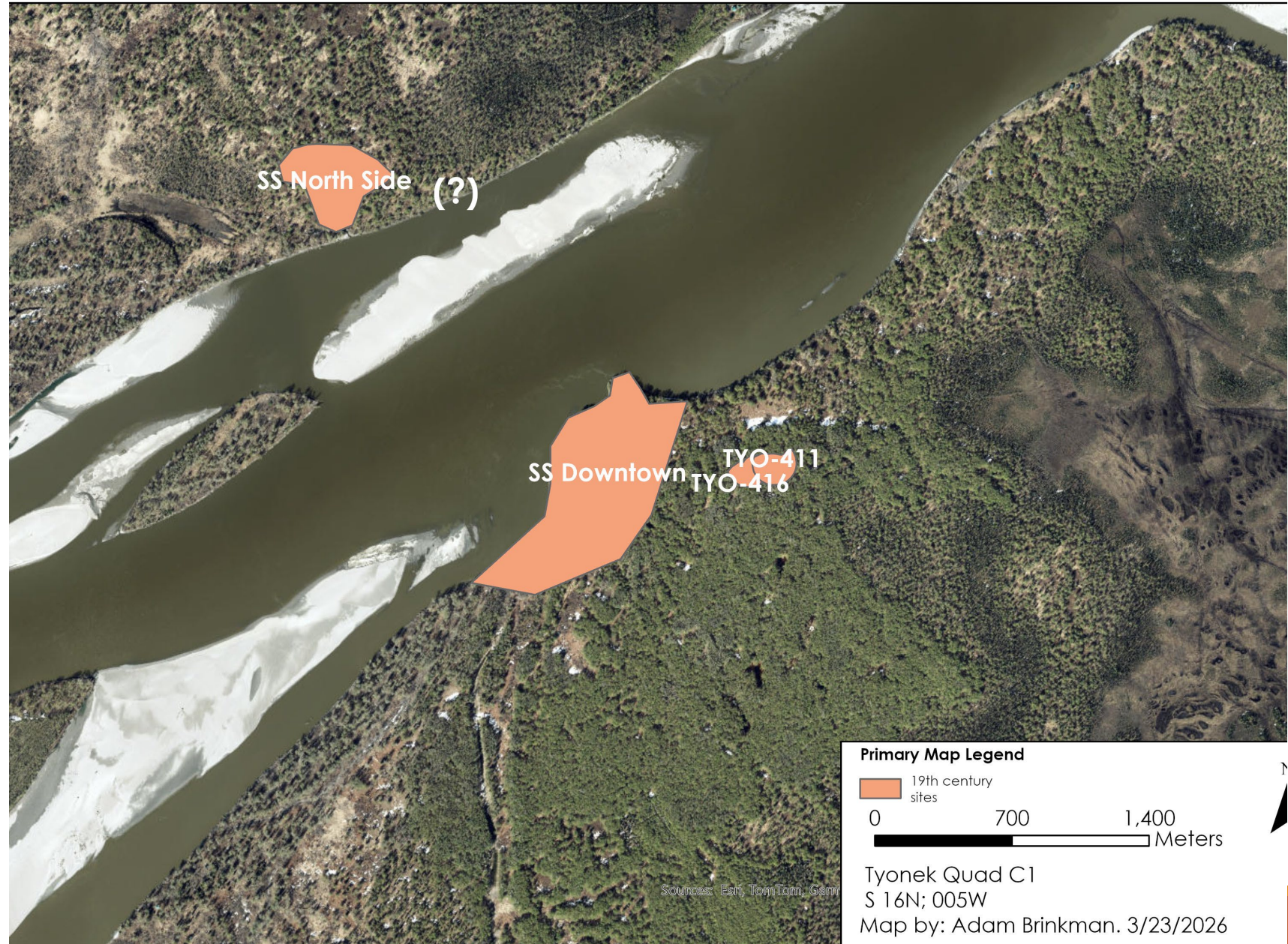


# Susitna Station

TYO-411 and TYO-416. Sites with square cabin features with outbuilding caches/depressions

Both had diagnostic artifacts from early 20<sup>th</sup> century.

Downtown Susitna Station popping with gold rush



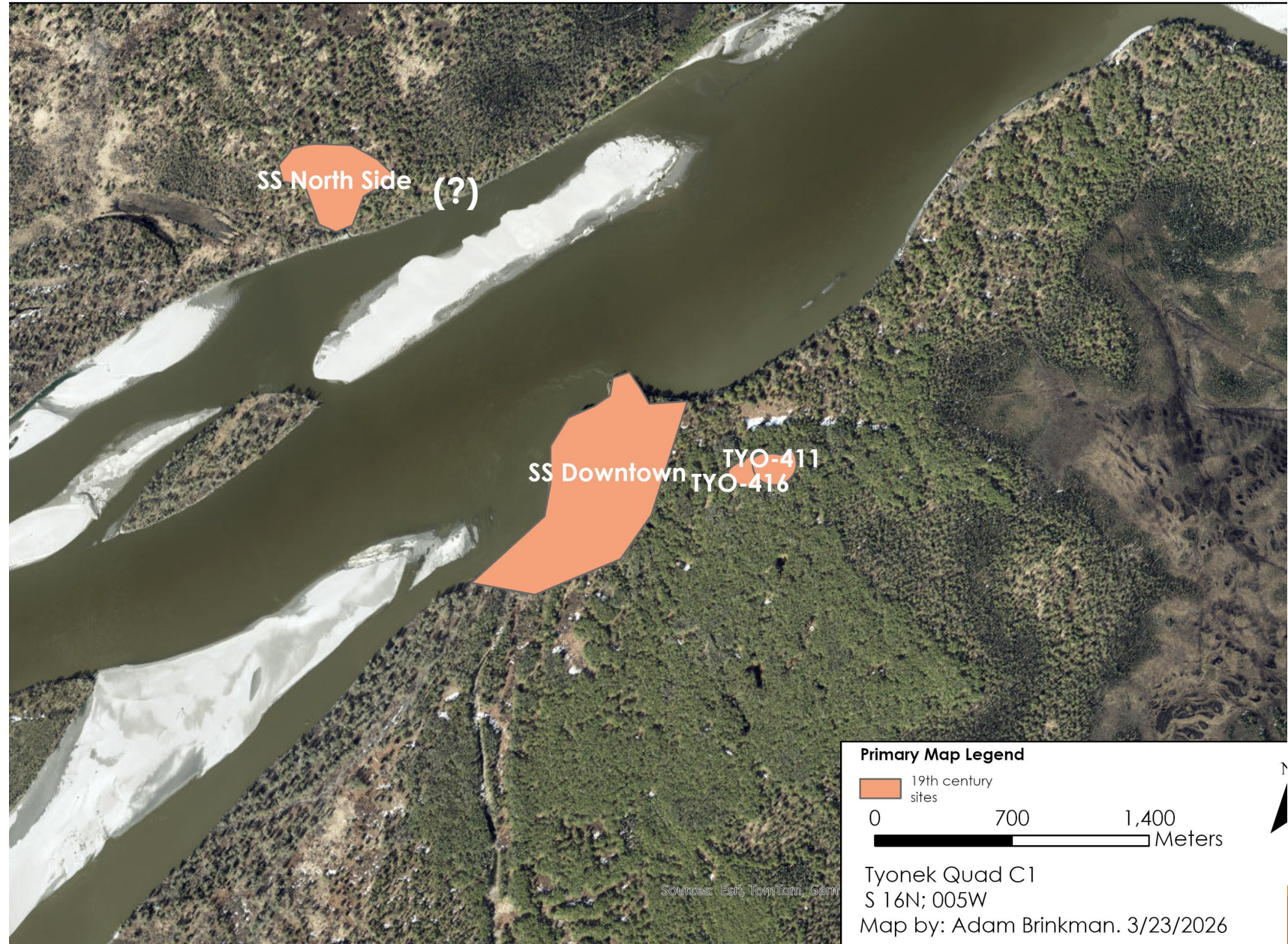


# Susitna Station

TYO-411 and TYO-416. Sites with square cabin features with outbuilding caches/depressions

Both had diagnostic artifacts from early 20<sup>th</sup> century.

Downtown Susitna Station popping with gold rush



Sources: Esti, TomTom, Garmin

**Primary Map Legend**

19th century sites

0 700 1,400 Meters

Tyonek Quad C1  
S 16N; 005W  
Map by: Adam Brinkman. 3/23/2026

# Questions?

---

Shoutout awesome team:

Abby Charles

Katie Ollesch

Lisa Wright

Mary Sine

McKenzie Herring

Molly Herron

Thanks to project sponsors

DOT&PF

DMLW – Land Sales

NPS

