

STATE OF ALASKA
DEPARTMENT OF NATURAL RESOURCES
DIVISION OF PARKS
AND
OUTDOOR RECREATION

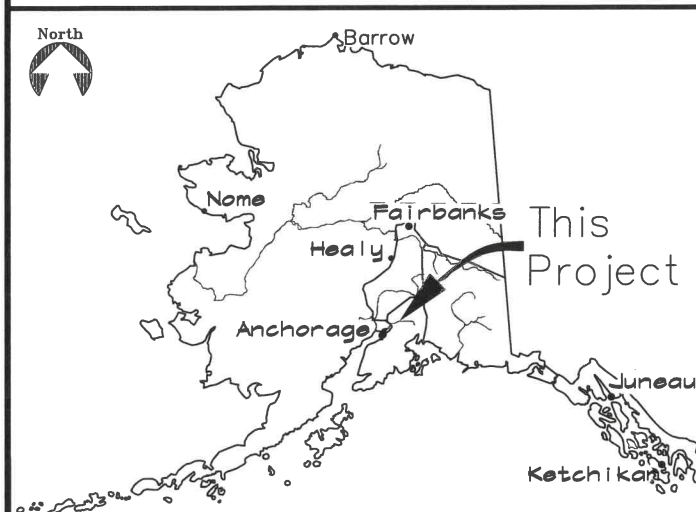
JONESVILLE MINE
ADIT CLOSURE REBID

PROJECT NO.
59560-3

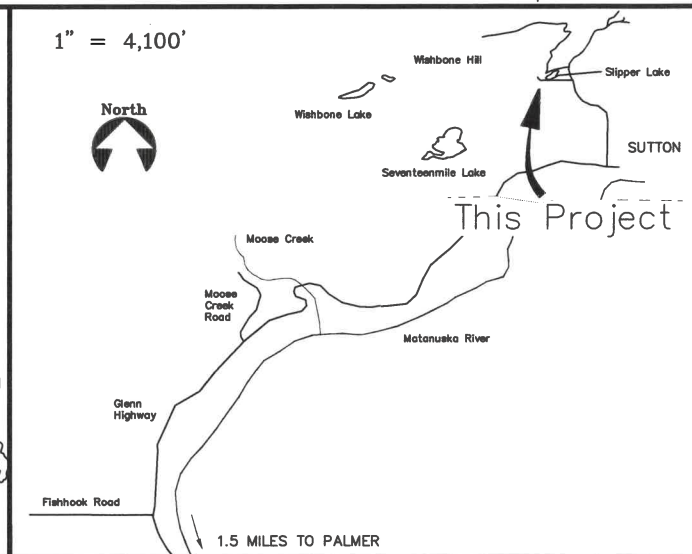
In Cooperation with the AK DNR Division of ML&W,
Abandoned Mine Lands Program

Vicinity Map

Location Map



SEC. 16, T19N, R3E, SEWARD MERIDIAN



INDEX

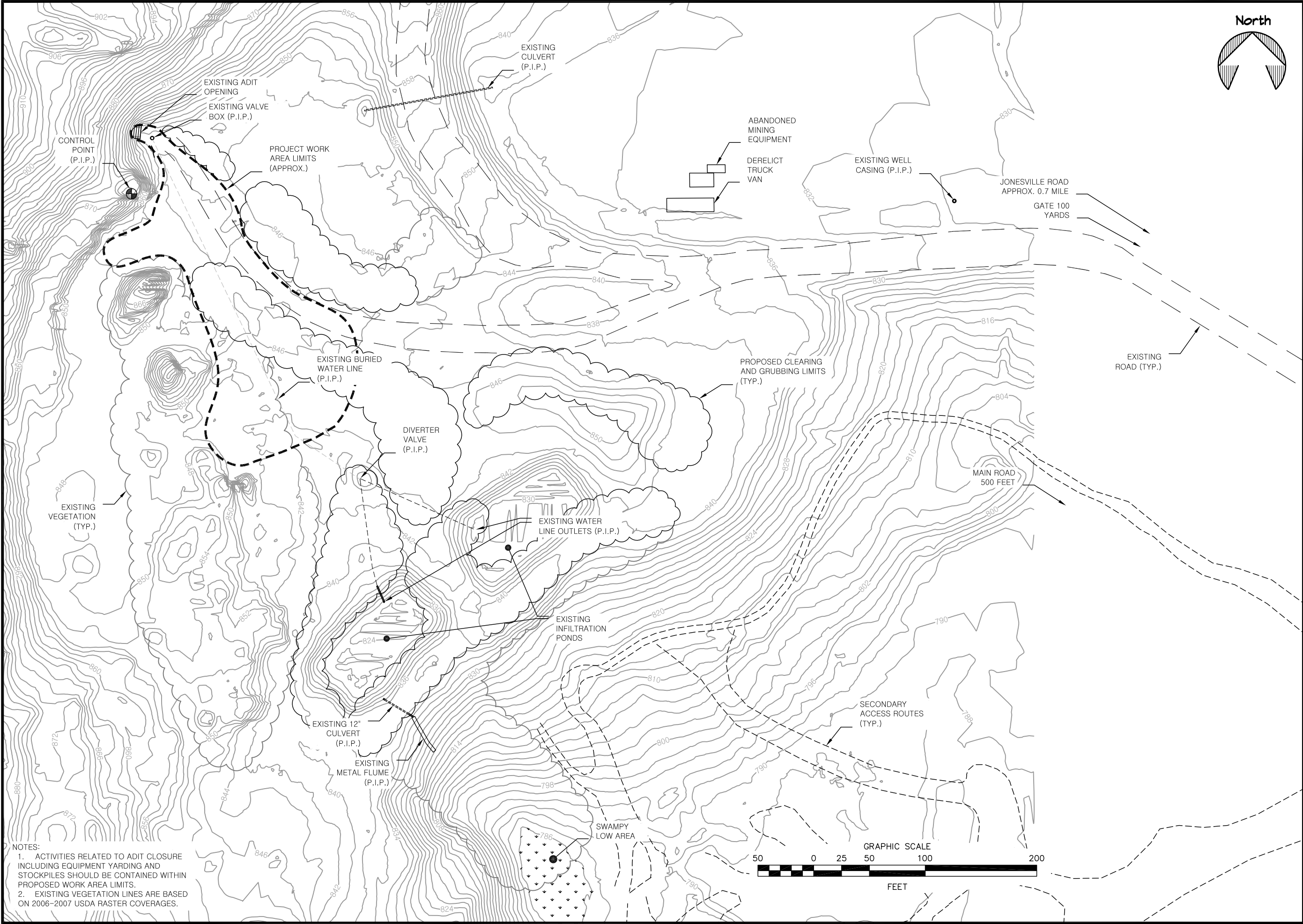
1. TITLE SHEET
2. OVERVIEW / EXISTING CONDITIONS
3. ADIT EXISTING CONDITIONS
4. ADIT CLOSURE SECTIONS

The following Division of Parks & Outdoor Rec. standard drawings apply to this project: None
The following D.O.T. (Highways) standard drawings apply to this project: None

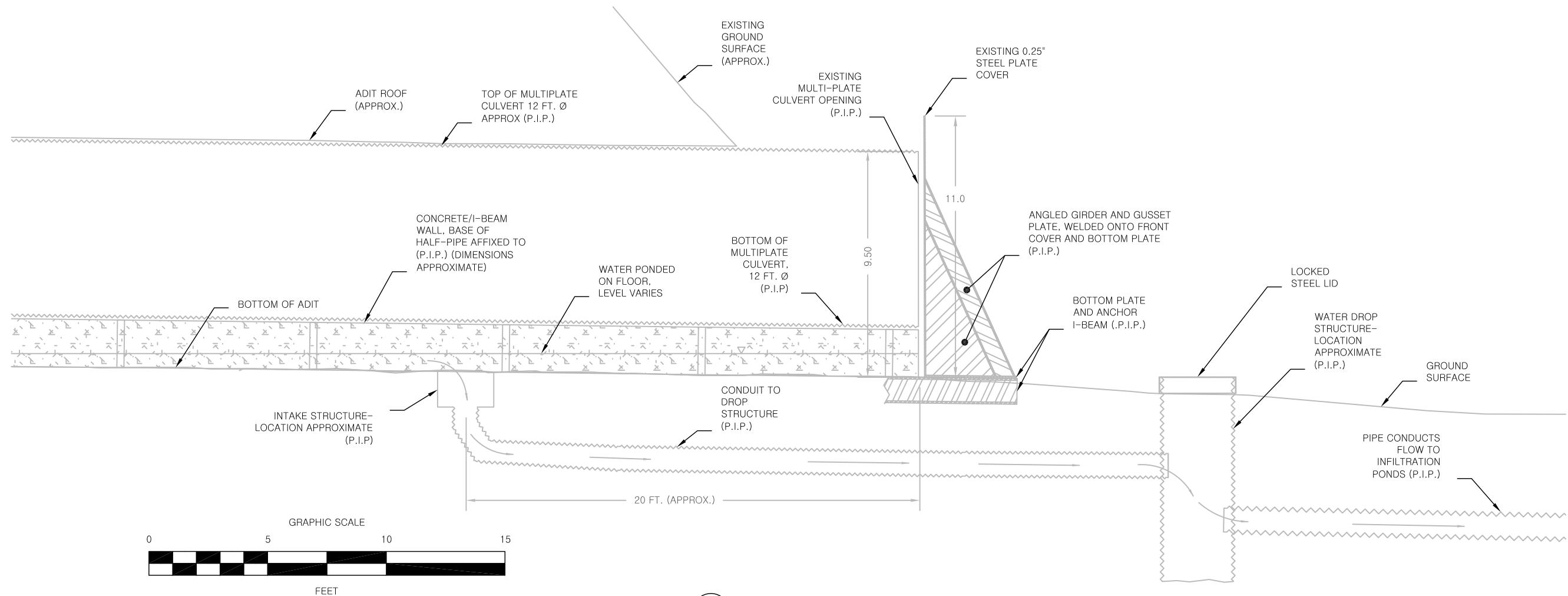
Plans developed by:
STATE OF ALASKA
Department of Natural Resources
Abandoned Mine Lands Section
550 W 7th Ave. Suite 920, Anchorage, AK 99501
Recommended:

Charles J. Irey 8-18-25
Charles J. Irey Date
AML Program Manager

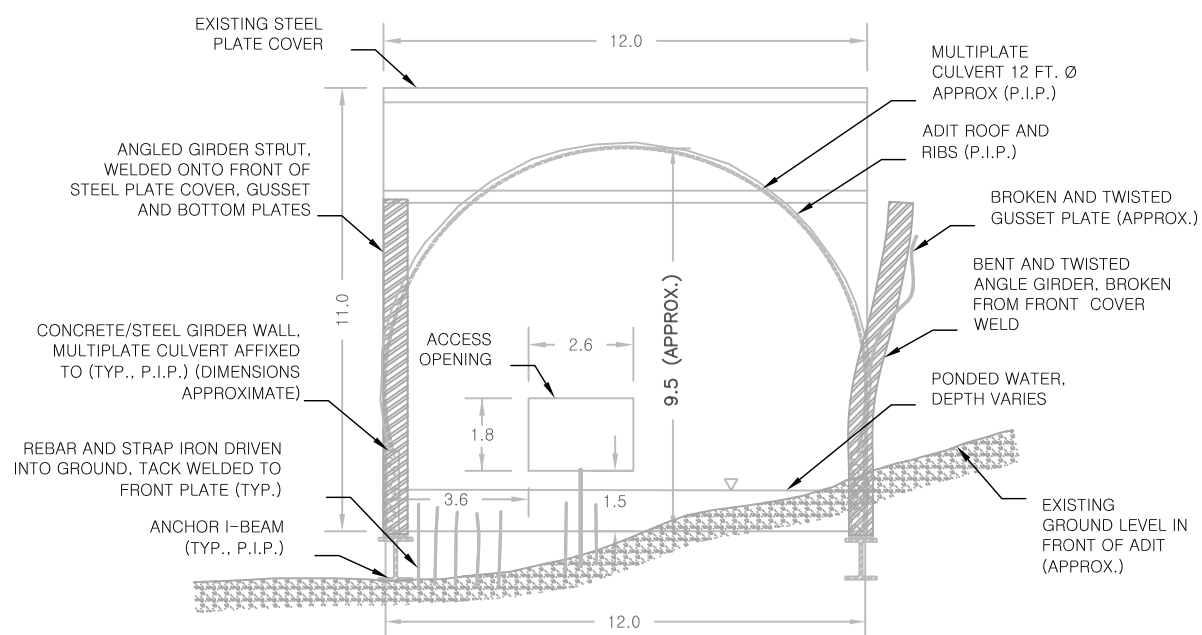
Approved: *Christy Colles* 8/18/25
Christy Colles Date
Director, Division Mining, Land, & Water



NOTES:
1. ACTIVITIES RELATED TO ADIT CLOSURE INCLUDING EQUIPMENT YARDING AND STOCKPILES SHOULD BE CONTAINED WITHIN PROPOSED WORK AREA LIMITS.
2. EXISTING VEGETATION LINES ARE BASED ON 2006-2007 USDA RASTER COVERAGES.



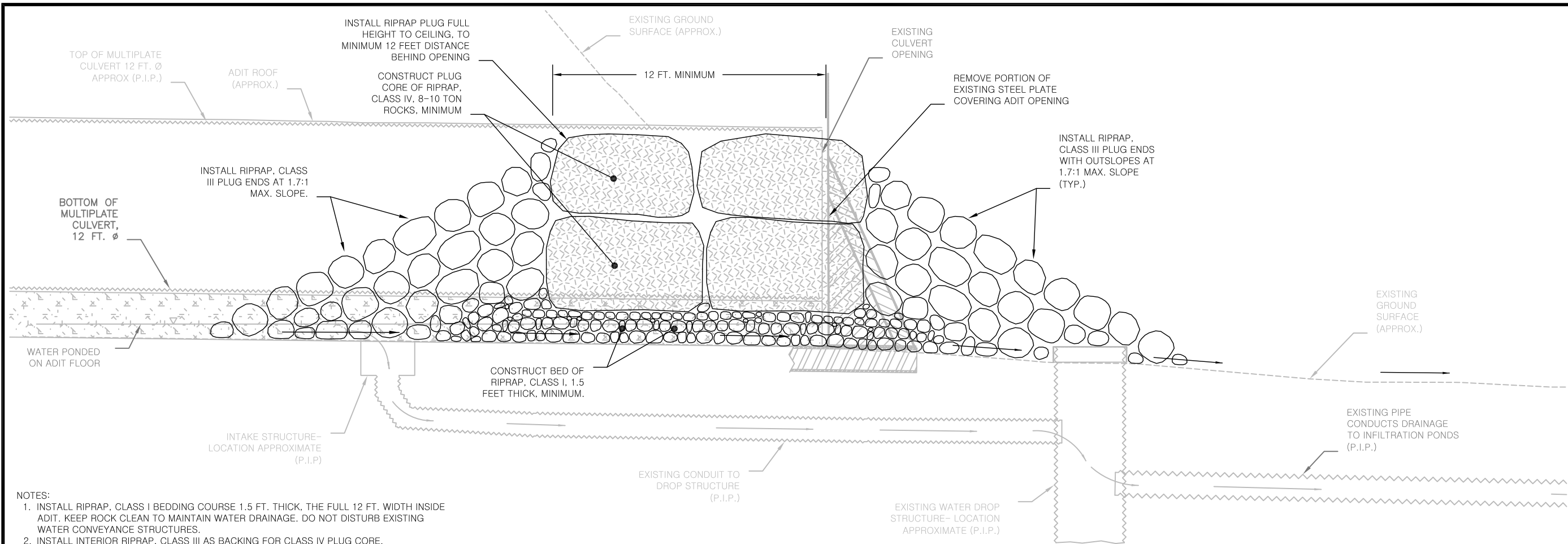
1 EXISTING ADIT CONDITIONS
2 SIDE VIEW



2 EXISTING ADIT CONDITIONS
2 FRONT VIEW

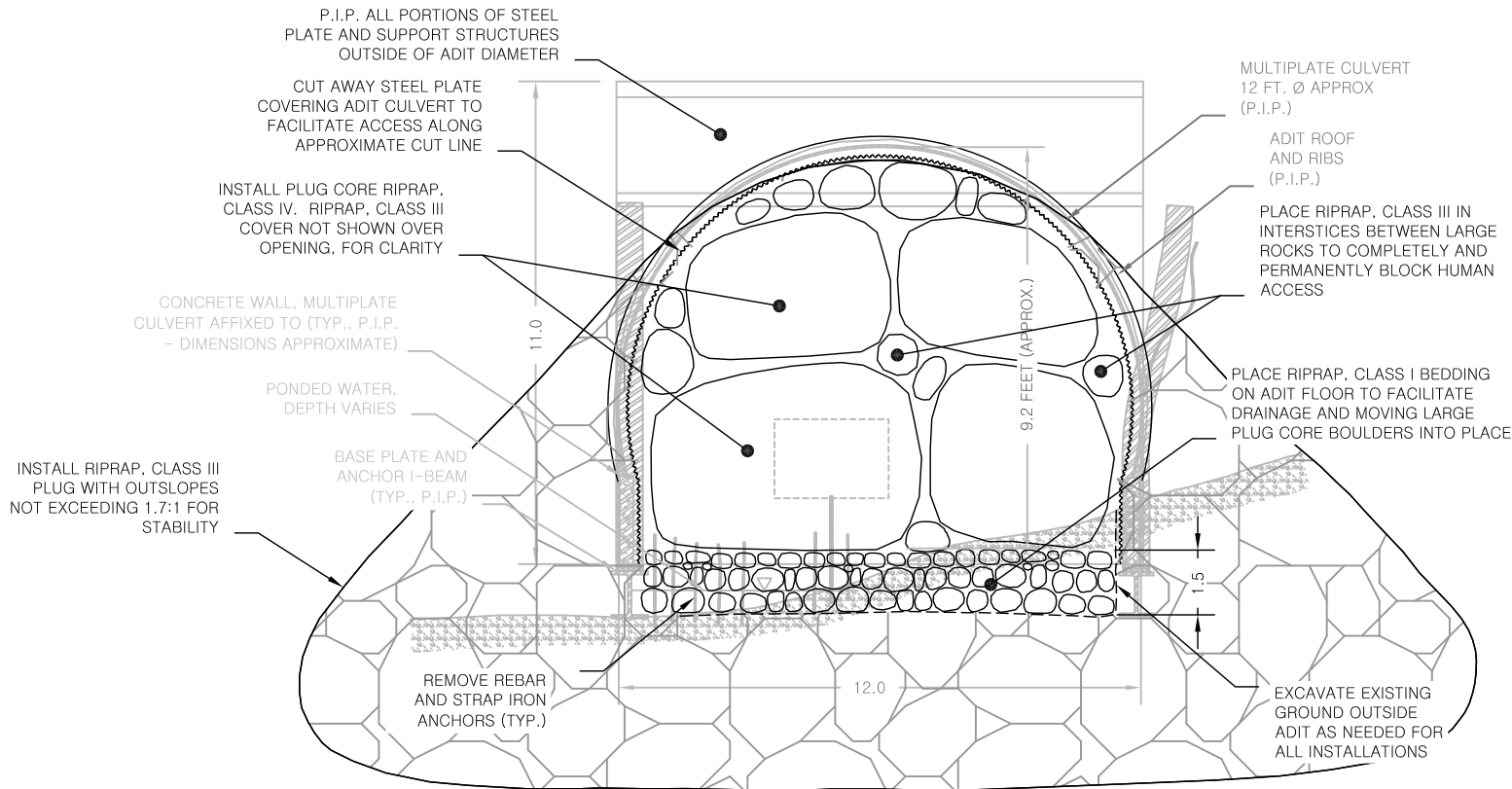
NOTE: DIMENSIONS AND POSTIONS ARE APPROXIMATE. EXISTING WATER DRAINAGE SYSTEM GEOMETRY IS BASED ON ACCOUNTS OF FORMER PERMITTING GEOLOGIST. WATER LEVEL AND FLOW RATE VARIES.





- NOTES:
1. INSTALL RIPRAP, CLASS I BEDDING COURSE 1.5 FT. THICK, THE FULL 12 FT. WIDTH INSIDE ADIT. KEEP ROCK CLEAN TO MAINTAIN WATER DRAINAGE. DO NOT DISTURB EXISTING WATER CONVEYANCE STRUCTURES.
 2. INSTALL INTERIOR RIPRAP, CLASS III AS BACKING FOR CLASS IV PLUG CORE.
 3. INSTALL PLUG CORE USING LARGE ROCKS PER TEMPLATE. USE CLASS III AS NEEDED TO OBSTRUCT OPENINGS, TO COMPLETELY PREVENT HUMAN ACCESS.
 4. INSTALL OUTSIDE FINISH COVER OF RIPRAP, CLASS III.
 5. KEEP ALL ROCK INSTALLATIONS FREE OF SEDIMENT TO MAINTAIN HYDRAULIC CONDUCTIVITY.

1 ADIT CLOSURE DESIGN
3 SIDE VIEW



- NOTES:
1. DRAWING SCALE APPLIES TO BOTH VIEWS. STRUCTURE DIMENSIONS AND POSTIONS ARE APPROXIMATE.
 2. EXISTING WATER DRAINAGE SYSTEM GEOMETRY IS BASED ON ACCOUNTS OF FORMER PERMITTING GEOLOGIST.

2 ADIT CLOSURE DESIGN SCHEMATIC
3 FRONT VIEW

