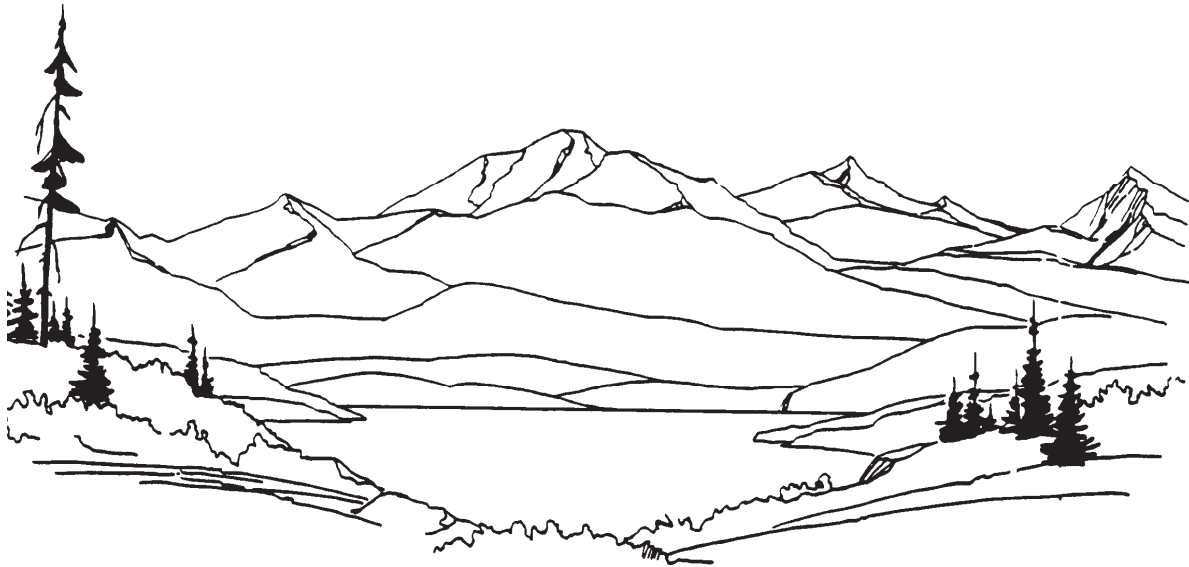


**STATE OF ALASKA
DEPARTMENT OF NATURAL RESOURCES**

**DIVISION OF PARKS
AND
OUTDOOR RECREATION**



**PROPOSAL, CONTRACT, BOND
AND SPECIAL PROVISIONS**

**CSP: EKLUTNA LAKE TRAILHEAD
FACILITY IMPROVEMENTS
PROJECT NO. 73302-2**

COPY _____

TABLE OF CONTENTS

(Federal Aid)

1. Invitation

INVITATION TO BID 25D-07DNR (07/18, 01/19)
SPECIAL NOTICE TO BIDDERS

2. Bid Notices

REQUIRED DOCUMENTS 25D-04DNR (07/18, 01/19)
FEDERAL EEO BID CONDITIONS 25A-301DNR (01/02, 01/19)

3. Forms

SUBCONTRACTOR LIST 25D-05DNR (05/17, 01/19)
CONTRACTOR'S QUESTIONNAIRE 25D-08DNR (08/01, 01/19)
BID FORM 25D-09DNR (07/03, 01/19)
BID SCHEDULE (01/19)
CONSTRUCTION CONTRACT 25D-10HDNR (01/15, 01/19)
PAYMENT BOND 25D-12DNR (08/01, 01/19)
PERFORMANCE BOND 25D-13DNR (08/01, 01/19)
BID BOND 25D-14DNR (08/01, 01/19)
BID MODIFICATION 25D-16DNR (07/18, 01/19)
MATERIAL ORIGIN CERTIFICATE 25D-60 (11/08/22)
CERTIFICATE OF BUY AMERICA COMPLIANCE 25D-62 (11/08/22)
EEO-1 CERTIFICATION 25A-304DNR (01/02, 01/19)

4. Contract Provisions and Specifications

COMBINED STANDARD MODIFICATIONS AND SPECIAL PROVISIONS
APPENDIX A – PERMITS
APPENDIX B – SURVEY REQUIREMENTS
APPENDIX C – EROSION AND SEDIMENT CONTROL PLAN
APPENDIX D – MASTER MATERIALS CERTIFICATION LIST (MCL)

5. Federal Wage Rates

Federal wage rates can be obtained at <https://sam.gov/content/wage-determinations> for the State of Alaska. Use the federal wage rates that are in effect 10 days before Bid Opening. The Department will include a paper copy of the federal wage rates in the signed Contract.

6. State Wage Rates

State wage rates can be obtained at <http://www.labor.state.ak.us/lss/pamp600.htm>. Use the State wage rates that are in effect 10 days before Bid Opening. The Department will include a paper copy of the State wage rates in the signed Contract.



INVITATION TO BID
for Construction Contract

Date: June 18, 2024

CSP: Eklutna Lake Trailhead Facility Improvements, Project No. 73302-2

Project Name and Number

The Department invites bidders to submit bids for furnishing all labor, equipment, and materials and performing all work for the project described below. The Department will only consider bids received **before 2:00 PM local time (per the Department's time source) on the 10 day of July 2024**. On that date, the Department will assemble, open, and then publicly announce the timely-received bids at **550 W. 7th Avenue, Suite 1340; Anchorage, AK 99501**, at **2:15 PM**, or as soon thereafter as practicable.

Location of Project: Eklutna Lake, Alaska
Contracting Officer: Rys Miranda, P.E.
Issuing Office: DNR, Division of Parks and Outdoor Recreation

State Funded Federal Aid

Description of Work:

Paving the lower overflow parking area at the Eklutna Lake Trailhead, the placement of concrete parking bumpers, the repositioning of barrier rocks, ditch digging and lining, and the installation of an orientation kiosk and signs.

Project DBE Utilization Goal: Race-Neutral, Goal is 0% Race-Conscious, Goal is 0%

The Engineer's Estimate is: less than \$100,000 between \$1,000,000 and \$2,500,000
 between \$100,000 and \$250,000 between \$2,500,000 and \$5,000,000
 between \$250,000 and \$500,000 greater than \$5,000,000
 between \$500,000 and \$1,000,000

All work shall be completed in N/A Calendar Days, or by September 30, 2024. The Department will identify interim completion dates, if any, in the Special Provisions.

The apparent successful bidder must furnish a payment bond in the amount of **100%** of the contract and a performance bond in the amount of **100%** of the contract as security conditioned for the full, complete and faithful performance of the contract. The apparent successful bidder must execute the said contract and bonds within fifteen calendar days, or such further time as may be allowed in writing by the Contracting Officer, after receiving notification of the acceptance of their bid.

Submission of Bidding Documents

Bidders may submit bidding documents ~~electronically via the Department's approved online bidding service~~, through the mail or hand delivered. For mailed or hand delivered bids ~~and for electronically submitted bids with a paper bid guaranty~~, documents shall be submitted in a sealed envelope marked as follows:

Bidding Documents for Project: CSP: Eklutna Lake Trailhead Facility Improvements 73302-2	ATTN: DNR, Division of Parks and Outdoor Recreation 550 W. 7th Avenue, Suite 1340 Anchorage, AK 99501
--	---

It is incumbent upon the bidder to ensure its bid, any amendments, and/or withdrawal arrive, in its entirety, at the location and before the deadline stated above. A bidder sending a bid amendment or withdrawal via email or fax must transmit its documentation to the Department at this email address: katie.winter@alaska.gov or fax number: (907) 269-6410.

To be responsive, a bid must include a bid guaranty equal to 5% of the amount bid. *(When calculating the bid amount for purposes of determining the 5% value of the bid guaranty, a bidder shall include its base bid amount, plus the amount bid for alternate and supplemental bid items, if any.)*

The Department hereby notifies all bidders that it will affirmatively ensure that in any contract entered into pursuant to this Invitation, Disadvantaged Business Enterprises will be afforded full opportunity to submit bids and will not be discriminated against on the grounds of race, color, national origin, or sex in consideration for an award.

NOTICE TO BIDDERS

The following data may assist a bidder in preparing its bid:

SEE SPECIAL NOTICE TO BIDDERS

A bidder may download project plans and specifications from: <http://dnr.alaska.gov/parks/designconstruct/bidcalresults.htm>.
For additional information contact:

Division of Parks and Outdoor Recreation
Design & Construction Section
Phone: (907) 269-8731

If a bidder has a question relating to design features, constructability, quantities, or other technical aspects of the project, it may direct its inquiry to the contact listed below.

A bidder requesting assistance in viewing the project site must make arrangements at least 48 hours in advance.

The point of contact for inquiries for this project is:

Katie Winter, P.E.
Email: katie.winter@alaska.gov
Phone: (907) 269-6410

A bidder may direct questions concerning bidding procedures and requirements to:

Rys Miranda, P.E.
Chief, Design & Construction
550 W. 7th Ave., Suite 1340
Anchorage AK 99501
E-Mail: rys.miranda@alaska.gov
Phone: (907) 269-8736

Other Information:

Bid results are available approximately 30 minutes after bid opening at
<http://dnr.alaska.gov/parks/designconstruct/bidcalresults.htm>

SPECIAL NOTICE TO BIDDERS

The Department hereby notifies bidders that information to assist in preparing bids is available.

1. Publications. The following are available from the Plans Room, download online, or as noted:
 - a. Standard Specifications for Highway Construction, 2020 Edition comb bound (\$25.00), download at: www.dot.state.ak.us/stwddes/dcspsecs/assets/pdf/hwyspecs/sshc2020.pdf, or order bound book from LuLu at: <https://www.lulu.com/en/us/shop/state-of-alaska-dept-of-transportation/2020-alaska-standard-specification-for-highway-construction/paperback/product-1qq9j9qk.html>.
 - b. Alaska Test Methods Manual (Lab & Field), May 15, 2023 Edition (\$25.00). Available online at: www.dot.state.ak.us/stwddes/desmaterials/mat_waqtc/testman.shtml.
 - c. Alaska Storm Water Pollution Prevention Plan Guide, March 2021. Available at: www.dot.state.ak.us/stwddes/desenviron/resources/stormwater.shtml.
2. Other Publications. These items are available upon request from the Department of Natural Resources, Division of Parks & Outdoor Recreation, Design & Construction Section at 550 West 7th Avenue, Suite 1340, Anchorage, AK:
 - a. Estimate of Quantity Computations.
 - b. Erosion, Sediment Control Plan (ESCP) in the appendix.
3. Materials Certification List (MCL). The MCL provides the Engineer with the appropriate approving authority. Contractor, submit certification for each material to the Engineer. The MCL is included in Appendix D.
4. Build America, Buy America Act. Effective for Federal award obligations after October 23, 2023, meet the requirements at 2 CFR 184 for construction materials.
5. COVID-19 Management Plan. The Governor's emergency declaration and mandates relating to COVID-19 expired on February 14, 2021. However, contractors are encouraged to review COVID-19 Response and Recovery Health Advisories that can be accessed at: <https://covid19.alaska.gov/health-advisories/>.

Contractors will still be required to meet any applicable local ordinances or requirements currently in effect, and comply with any future federal, state, or local declarations or mandates that might be adopted while work on the project is ongoing.

Consistent with Section 107-1.01 of the Standard Specifications for Highway Construction, the Contractor will be responsible for paying all costs and expenses incurred to comply with any COVID-19 Health Mandates or Health Advisories in effect during times when the Contractor is performing project-related work activities. The Contractor will additionally be responsible for preparing any general or site-specific mitigation and response plans required for its forces, along with any attendant schedule delays or impacts.

6. Electronic Bidding. The Department is not able to receive bids electronically. All bidding documents must be submitted by mail or hand delivered. Documents shall be submitted in a sealed envelope.
7. Material Sources. All borrow or fill material must come from pre-existing stockpiles, material reclaimed from maintained roadside ditches (provided the designed width or depth of the ditch is not increased), or commercially procured material from a source existing prior to the event. For any federal-funded project requiring the use of a non-commercial source or a commercial source that was not permitted to operate prior to the event (e.g. a new pit, agricultural fields, road ROWs, etc.) in whole or in part, regardless of cost, the Applicant must notify the Department prior to extracting material. The Department must review the source for compliance with all applicable federal environmental planning and historic preservation laws and executive orders prior to a subrecipient or their contractor commencing borrow extraction. Consultation and regulatory permitting may be required. Non-compliance with this requirement may jeopardize receipt of federal funding. Documentation of borrow sources utilized is required at closeout.
8. Cultural and Archaeological Survey for Material Sources. All material sources associated with this project must conform to AS 41.35.070 and have documented survey showing no adverse effects to historic, prehistoric, or archaeological resources. A list of qualified consultants approved to perform cultural/archaeological surveys can be found at: <http://dnr.alaska.gov/parks/oha/grant/contractorlistcurrent.pdf>.
9. Contract Price Adjustment(s). The Department will not provide cost escalation or de-escalation price adjustment for this contract, except for specific items described in the bid package at the time of bid opening.



STATE OF ALASKA
DEPARTMENT OF NATURAL RESOURCES

REQUIRED DOCUMENTS

Federal-Aid Contracts (Non-FHWA)

REQUIRED FOR BID. Bids will not be considered if the following documents are not completely filled out and submitted at the time of bidding:

1. **Bid Forms**
 - a. **Bid Form (Form 25D-09DNR)**
 - b. **Bid Schedule**
 - c. **Bid Attachments (as applicable)**
 - d. **Addenda Acknowledgement (as applicable)**
2. **Bid Bond (Form 25D-14DNR)**

REQUIRED FOR BID MODIFICATIONS. Any bid revisions must be submitted by the bidder prior to bid opening. Use the following form to modify Manual (paper) bids:

3. **Bid Modification (Form 25D-16DNR)**

REQUIRED AFTER NOTICE OF APPARENT LOW BIDDER. The apparent low bidder is required to complete and submit the following documents within 5 working days after receipt of written notification:

1. **Subcontractor List (Form 25D-5DNR)**

REQUIRED FOR AWARD. In order to be awarded the contract, the successful bidder must completely fill out and submit the following documents within the time specified in the intent to award letter:

1. **Construction Contract (Form 25D-10HDNR)**
2. **Payment Bond (Form 25D-12DNR)**
3. **Performance Bond (Form 25D-13DNR)**
4. **Contractor's Questionnaire (25D-08DNR)**
5. **Certificate of Insurance (from carrier)**
6. **EEO-1 Certification (Form 25A-304DNR)**
7. **Material Origin Certificate (Form 25D-60)**



STATE OF ALASKA
DEPARTMENT OF NATURAL RESOURCES

FEDERAL EEO BID CONDITIONS

STANDARD FEDERAL EQUAL EMPLOYMENT OPPORTUNITY CONSTRUCTION CONTRACT SPECIFICATIONS (EXECUTIVE ORDER 11246). FOR ALL NON-EXEMPT FEDERAL AND FEDERALLY-ASSISTED CONSTRUCTION CONTRACTS TO BE AWARDED IN THE STATE OF ALASKA

1. Definitions. As used in these specifications:
 - a. “**Covered area**” means the geographical area described in the solicitation from which this contract resulted;
 - b. “**Director**” means Director, Office of Federal Contract Compliance Programs (OFCCP), United States Department of Labor (DOL), or any persons to whom the Director delegates authority;
 - c. “**Employer**” identification number” means the Federal Social Security number used on the Employer’s Quarterly Federal Tax Return, U.S. Treasury Department Form 941.
 - d. “**Minority**” includes:
 - (1) Black (all persons having origins in any of the Black African racial groups not of Hispanic origin);
 - (2) Hispanic (all persons of Mexican, Puerto Rican, Cuban, Central or South American or other Spanish culture or origin, regardless of race);
 - (3) Asian and Pacific Islander (all persons having origins in any of the original peoples of the Far East, Southeast Asia, the Indian Subcontinent, or the Pacific Islands); and
 - (4) American Indian or Alaska Native (all persons having origins in any of the original peoples of North America and maintaining identifiable tribal affiliations through membership and participation or community identification).
2. Whenever the Contractor, or any subcontractor at any tier, subcontracts a portion of the work involving any construction trade, it shall physically include in each subcontract in excess of \$10,000 the provisions of these specifications and the Notice which contains the applicable goals for minority and female participation and which is set forth in the solicitations from which this contract resulted.
3. If the Contractor is participating (pursuant to 41 CFR 60-4.5) in a Hometown Plan approved by the DOL in the covered area, either individually or through an association, its affirmative action obligations on all work in the Plan area (including goals and timetables) shall be in accordance with that Plan for those trades that have unions participating in the Plan. Contractors must be able to demonstrate their participation in and compliance with the provisions of any such Hometown Plan. Each Contractor or subcontractor participating in an approved Plan is individually required to comply with its obligations under the EEO clause, and to make good faith effort to achieve each goal under the Plan in each trade in which it has employees. The overall good faith performance by other Contractors or subcontractors toward a goal in an approved Plan does not excuse any covered Contractor’s or subcontractor’s failure to make good faith efforts to achieve the Plan goals and timetables.
4. The Contractor shall implement the specific affirmative action standards provided in paragraphs 7(a) through 7(p) of these specifications. The goals set forth in the solicitation from which this contract resulted are expressed as percentages of the total hours of employment and training of minority and female utilization the Contractor should reasonably be able to achieve in each construction trade in which it has employees in the covered area. The Contractor is expected to make substantially uniform progress toward its goals in each craft during the period specified.

Covered construction contractors performing construction work in geographical areas where they do not have a federal or federally-assisted construction contract shall apply the minority and female goals established for the geographical area where the work is being performed. Goals are published periodically in the Federal Register in notice form, and such notices may be obtained from any OFCCP office or from federal procurement contracting officers.

5. Neither the provisions of any collective bargaining agreement, nor the failure by a union with whom the Contractor has a collective bargaining agreement, to refer either minorities or women shall excuse the Contractor's obligations under these specifications, Executive Order 11246, or the regulations promulgated pursuant thereto.
6. In order for the non-working training hours of apprentices and trainees to be counted in meeting the goals, such apprentices and trainees must be employed by the Contractor during the training period of an approved training program and the Contractor must have made a commitment to employ the apprentices and trainees at the completion of their training, subject to the availability of employment opportunities.
7. The Contractor shall take specific affirmative actions to ensure equal employment opportunity. The evaluation of the Contractor's compliance with these specifications shall be based upon its effort to achieve maximum results from its actions. The Contractor shall document these efforts fully, and shall implement affirmative action steps at least as extensive as the following:
 - a. Ensure and maintain a working environment free of harassment, intimidation, and coercion at all sites, and in all facilities at which the Contractor's employees are assigned to work. The Contractor, where possible, will assign two or more women to each construction project. The Contractor shall specifically ensure that all foremen, superintendents, and other on-site supervisory personnel are aware of and carry out the Contractor's obligations to maintain such a working environment, with specific attention to minority or female individuals working at such sites or in such facilities.
 - b. Establish and maintain a current list of minority and female recruitment sources, provide written notification to minority and female recruitment sources and to community organizations when the Contractor or its unions have employment opportunities available, and maintain a record of the organizations' responses.
 - c. Maintain a current file of the names, addresses and telephone numbers of each minority and female off-the-street applicant and minority or female referral from a union, a recruitment source or community organization and of what action was taken with respect to each such individual. If such individual was sent to the union hiring hall for referral and was not referred back to the Contractor by the union or, if referred, not employed by the Contractor, this shall be documented in the file with the reason therefor, along with whatever additional actions the Contractor may have taken.
 - d. Provide immediate written notification to the Director when the union or unions with which the Contractor has a collective bargaining agreement has not referred to the Contractor a minority person or woman sent by the Contractor, or when the Contractor has other information that the union referral process has impeded the Contractor's efforts to meet its obligations.
 - e. Develop on-the-job training opportunities and/or participate in training programs for the area which expressly include minorities and women, including upgrading programs and apprenticeship and trainee programs relevant to the Contractor's employment needs, especially those programs funded or approved by the DOL. The Contractor shall provide notice of these programs to the sources compiled under 7(b) above.
 - f. Disseminate the Contractor's EEO policy by providing notice of the policy to unions and training programs and requesting their cooperation in assisting the Contractor in meeting its EEO obligations; by including it in any policy manual and collective bargaining agreement; by publicizing it in the company newspaper, annual report, etc.; by specific review of the policy with all management personnel and with all minority and female employees at least once a year; and by posting the company EEO policy on bulletin boards accessible to all employees at each location where construction work is performed.

- g. Review, at least annually, the company's EEO policy and affirmative action obligations under these specifications with all employees having any responsibility for hiring, assignment, layoff, termination or other employment decisions including specific review of these items with on-site supervisory personnel such as Superintendent, general foreman, etc., prior to the initiation of construction work at any job site. A written record shall be made and maintained identifying the time and place of these meetings, persons attending, subject matter discussed, and dispositions of the subject matter.
 - h. Disseminate the Contractor's EEO policy externally by including it in any advertising in the news media, specifically including minority and female news media, and providing written notification to and discussing the Contractor's EEO policy with other Contractors and Subcontractors with whom the Contractor does or anticipates doing business.
 - i. Direct its recruitment efforts, both oral and written, to minority, female and community organizations, to schools with minority and female students and to minority and female recruitment and training organizations serving the Contractor's recruitment area and employment needs. Not later than one month prior to the date for the acceptance of applications for apprenticeship or other training by any recruitment source, the Contractor shall send written notification to organizations such as the above, describing the openings, screening procedures, and tests to be used in the selection process.
 - j. Encourage present minority and female employees to recruit other minority persons and women and, where reasonable, provide after school, summer and vacation employment to minority and female youth both on the site and in other areas of a Contractor's workforce.
 - k. Validate all tests and other selection requirements where there is an obligation to do so under 41 CFR Part 60-3.
 - l. Conduct, at least annually, an inventory and evaluation at least of all minority and female personnel for promotional opportunities and encourage these employees to seek or to prepare for, through appropriate training, etc., such opportunities.
 - m. Ensure that seniority practices, job classifications, work assignments and other personnel practices do not have a discriminatory effect by continually monitoring all personnel and employment related activities to ensure that the EEO policy and the Contractor's obligations under these specifications are being carried out.
 - n. Ensure that all facilities and company activities are nonsegregated except that separate or single-used toilet, necessary changing facilities and necessary sleeping facilities shall be provided to assure privacy between the sexes.
 - o. Document and maintain a record of all solicitations of offers for subcontractors from minority and female construction contractors and suppliers, including circulations of solicitations to minority and female contractor associations and other business associations.
 - p. Conduct a review, at least annually, of all supervisors' adherence to and performance under the Contractor's EEO policies and affirmative action obligations.
8. Contractors are encouraged to participate in voluntary associations which assist in fulfilling one or more of their affirmative action obligations 7(a) through 7(p). The efforts of a contractor association, joint contractor-union, contractor-community, or other similar group of which the Contractor is a member and participant, may be asserted as fulfilling any or more of its obligations under 7(a) through 7(p) of these specifications provided that the Contractor actively participates in the group, makes every effort to assure that the group has a positive impact on the employment of minorities and women in the industry, ensures that the concrete benefits of the program are reflected in the Contractor's minority and female work force participation, makes a good faith effort to meet its individual goals and timetables, and can provide access to documentation which demonstrates the effectiveness of actions taken on behalf of the Contractor. The obligation to comply, however, is the Contractor's and failure of such a group to fulfill an obligation shall not be a defense for the Contractor's noncompliance.

9. A single goal for minorities and a separate goal for women have been established. The Contractor, however, is required to provide equal employment opportunity and to take affirmative action for all minority groups, both male and female, and all women, both minority and non-minority. Consequently, the Contractor may be in violation of the Executive Order if a particular group is employed in a substantially disparate manner (for example, even though the Contractor has achieved its goals for women generally, the Contractor may be in violation of the Executive Order if a specific minority group of women is underutilized.)
10. The Contractor shall not use the goals and timetables or affirmative action standards to discriminate against any person because of race, color, religion, sex, or national origin.
11. The Contractor shall not enter into any subcontract with any person or firm debarred from government contracts pursuant to Executive Order 11246.
12. The Contractor shall carry out such sanctions and penalties for violation of these specifications and of the Equal Opportunity Clause, including suspension, termination and cancellation of existing subcontracts as may be imposed or ordered pursuant to Executive Order 11246, as amended, and its implementing regulations, by the OFCCP. Any Contractor who fails to carry out such sanctions and penalties shall be in violation of these specifications and Executive Order 11246, as amended.
13. The Contractor, in fulfilling its obligations under these specifications, shall implement specific affirmative action steps, at least as extensive as those standards prescribed in paragraph 7 of these specifications, so as to achieve maximum results from its efforts to ensure equal employment opportunities. If the Contractor fails to comply with the requirements of the Executive Order, the implementing regulations or these specifications, the Director shall proceed in accordance with 41 CFR 60-4.8.
14. The Contractor shall designate a responsible official to monitor all employment related activity to ensure that the company EEO policy is being carried out, to submit reports relating to the provisions hereof as may be required by the Government and to keep records. Records shall at least include for each employee the name, address, telephone numbers, construction trade, union affiliation if any, employee identification number when assigned, social security number, race, sex, status (e.g., mechanic apprentice, trainees, helper, or laborer), dates of changes in status, hours worked per week in the indicated trade, rate of pay, and locations at which the work was performed. Records shall be maintained in an easily understandable and retrievable form; however, to the degree that the existing records satisfy this requirement, Contractors shall not be required to maintain separate records.
15. Nothing herein provided shall be construed as a limitation upon the application of other laws that establish different standards of compliance or upon the application of requirements for the hiring of local or other area residents (e.g., those under the Public Works Employment Act of 1977 and the Community Development Block Grant Programs).
16. The Bidder's attention is called to the "Equal Opportunity Clause" and the "Standard Federal Equal Employment Opportunity Construction Contract Specifications" set forth herein.
17. The goals and timetables for minority and female participation, expressed in percentage terms for the Contractor's aggregate work force in each trade on all construction work in the covered area, are as set forth in item 20.

These goals as listed in item 20 are applicable to all the Contractor's construction work (whether or not it is federal or federally-assisted) performed in the covered area.

The Contractor's compliance with the Executive Order and the regulations in 41 CFR Part 60-4 shall be based on its implementation of the Equal Opportunity Clause, specific affirmative action obligations required by the specifications set forth in 41 CFR 60-4.3(a), and its efforts to meet the goals. If the Contractor performs construction work in a geographical area located outside of the covered area, it shall apply the goals established for such geographical area where the work is actually performed. With regard to this second area, the Contractor also is subject to the goals for both its federally and non-federally involved construction.

The hours on minority and female employment and training must be substantially uniform throughout the length of the contract, and in each trade, and the Contractor shall make a good faith effort to employ minorities and women

evenly on each of its projects. The transfer of minority or female employees or trainees from Contractor to Contractor or from project to project for the sole purpose of meeting the Contractor's goals shall be a violation of the contract, the Executive Order and the regulations in 41 CFR Part 60-4. Compliance with the goals will be measured against the total work hours performed.

18. The Contractor shall provide written notification to the Department, for all subcontracts documents as follows: the name, address and telephone number of subcontractors and their employer identification number; the estimated dollar amount of the subcontracts; estimated starting and completion dates of the subcontracts; and the geographical area in which the contract is to be performed.

This written notification shall be required for all construction subcontracts in excess of \$10,000 at any tier for construction work under the contract resulting from this project's solicitation.

19. As used in the Bid Notice, and in the contract resulting from this project's solicitation, the "covered area" is the State of Alaska.

20. Goal and Timetable

- a. The following goal and timetable for female utilization shall be included in all federal and federally-assisted construction contracts and subcontracts in excess of \$10,000. The goal is applicable to the Contractor's aggregate on-site construction work force whether or not part of that work force is performing work on a federal or federally assisted construction contract or subcontract.

ALASKA GOAL AND TIMETABLE FOR WOMEN*

<u>Timetable</u>	<u>Goal</u> **
Until Further Notice	6.9%

- b. The following goals and timetable for minority utilization shall be included in all federal or federally-assisted construction contracts and subcontracts in excess of \$10,000 to be performed in Alaska. The goals are applicable to the Contractor's aggregate on-site construction work force whether or not part of that work force is performing work on a federal or federally-assisted construction contract or subcontract.

ALASKA GOALS AND TIMETABLE FOR MINORITY UTILIZATION

<u>Timetable</u>	<u>Economic Area (EA)***</u>	<u>Goals</u> **
Until Further Notice	Anchorage SMSA Area	08.7%
	Remainder of State	15.1%

* The goal and timetable for women listed above applies to Alaska as well as nationwide.

** The Director, from time to time, shall issue goals and timetables for minority and female utilization that shall be based on appropriate work force, demographic or other relevant data and which shall cover construction projects, or construction contracts performed in specific geographical areas. The goals shall be applicable to each construction trade in a covered Contractor's or subcontractor's entire work force which is working in the area covered by the goals and timetables, shall be published as notices in the FEDERAL REGISTER, and shall be inserted by the contracting officers and applicants, as applicable, in the Notice required by 41 CFR 60-4.2. Covered construction contractors performing construction work in geographical areas where they do not have a federal or federally-assisted construction contract shall apply the minority and female goals established for the geographical area where the work is being performed.

*** Refer to the Standard Metropolitan Statistical Areas (SMSA) and Economic Areas (EA), Office of Management and Budget, 1975.



STATE OF ALASKA
DEPARTMENT OF NATURAL RESOURCES

SUBCONTRACTOR LIST

CSP: Eklutna Lake Trailhead Facility Improvements, Project No. 73302-2

Project Name and Number

The apparent low bidder shall complete this form and submit it so as to be received by the Contracting Officer prior to the close of business on the fifth working day after receipt of written notice from the Department.

An apparent low bidder who fails to submit a completed Subcontractor List form within the time allowed will be declared non-responsible and may be required to forfeit the bid security.

Scope of work must be clearly defined. If an item of work is to be performed by more than one firm, indicate the portion or percent of work to be done by each.

Check as applicable: All Work on the above-referenced project will be accomplished without subcontracts

Or

List all first tier Subcontractors as follows:

FIRM NAME, ADDRESS, PHONE NO.	AK BUSINESS LICENSE NO., CONTRACTOR'S REGISTRATION NO.	SCOPE OF WORK TO BE PERFORMED

CONTINUE SUBCONTRACTOR INFORMATION ON REVERSE

For projects with federal-aid funding, I hereby certify Alaska Business Licenses and Contractor Registrations will be valid for all subcontractors prior to award of the subcontract. For projects without federal-aid funding (State funding only), I hereby certify the listed Alaska Business Licenses and Contractor Registrations were valid at the time bids were opened for this project.

Signature of Authorized Company Representative

Title

Company Name

Company Address (Street or PO Box, City, State, Zip)

Date

Phone Number

FIRM NAME, ADDRESS, PHONE NO.	AK BUSINESS LICENSE NO., CONTRACTOR'S REGISTRATION NO.	SCOPE OF WORK TO BE PERFORMED



CONTRACTOR'S QUESTIONNAIRE

CSP: Eklutna Lake Trailhead Facility Improvements, Project No. 73302-2
Project Name and Number

A. FINANCIAL

1. Have you ever failed to complete a contract due to insufficient resources?
 No Yes If YES, explain:

2. Describe any arrangements you have made to finance this work: _____

B. EQUIPMENT

1. Describe below the equipment you have available and intend to use for this project.

ITEM	QUAN.	MAKE	MODEL	SIZE/ CAPACITY	PRESENT MARKET VALUE

2. What percent of the total value of this contract do you intend to subcontract? _____ %

3. Do you propose to purchase any equipment for use on this project?
 No Yes If YES, describe type, quantity, and approximate cost:

4. Do you propose to rent any equipment for this work?
 No Yes If YES, describe type and quantity:

5. Is your bid based on firm offers for all materials necessary for this project?
 Yes No If NO, please explain:

C. EXPERIENCE

1. Have you had previous construction contracts or subcontracts with the State of Alaska?
 Yes No

Describe the most recent or current contract, its completion date, and scope of work:

2. List, as an attachment to this questionnaire, other construction projects you have completed, the dates of completion, scope of work, and total contract amount for each project completed in the past 12 months.

I hereby certify that the above statements are true and complete.

Name of Contractor Name and Title of Person Signing

Signature Date



STATE OF ALASKA
DEPARTMENT OF NATURAL RESOURCES

BID FORM

for

CSP: Eklutna Lake Trailhead Facility Improvements, Project No. 73302-2

Project Name and Number

by

Company Name

Company Address (Street or PO Box, City, State, Zip)

**TO THE CONTRACTING OFFICER,
DEPARTMENT OF NATURAL RESOURCES:**

In compliance with your Invitation to Bid dated June 18, 2024, the Undersigned proposes to furnish and deliver all the materials and do all the work and labor required in the construction of the above-referenced Project, located at or near Eklutna Lake, Alaska, according to the plans and specifications and for the amount and prices named herein as indicated on the Bid Schedule consisting of 2 sheets, which is made a part of this Bid.

The Undersigned declares that he has carefully examined the contract requirements and that he has made a personal examination of the site of the work; that he understands that the quantities, where such are specified in the Bid Schedule or on the plans for this project, are approximate only and subject to increase or decrease, and that he is willing to perform increased or decreased quantities of work at unit prices bid under the conditions set forth in the Contract Documents.

The Undersigned hereby agrees to execute the said contract and bonds within fifteen calendar days, or such further time as may be allowed in writing by the Contracting Officer, after receiving notification of the acceptance of this bid, and it is hereby mutually understood and agreed that in case the Undersigned does not, the accompanying bid guarantee shall be forfeited to the State of Alaska, Department of Transportation and Public Facilities as liquidated damages, and the said Contracting officer may proceed to award the contract to others.

The Undersigned agrees to commence the work within 10 calendar days, and to complete the work within NA calendar days, after the effective date of the Notice to Proceed, or by September 30, 2024, unless extended in writing by the Contracting Officer.

The Undersigned proposes to furnish Payment Bond in the amount of **100%** (of the contract) and Performance Bond in the amount of **100%** (of the contract), as surety conditioned for the full, complete and faithful performance of this contract.

The Undersigned acknowledges receipt of the following addenda to the drawings and/or specifications (give number and date of each).

Addenda Number	Date Issued	Addenda Number	Date Issued	Addenda Number	Date Issued

NON-COLLUSION DECLARATION

The Undersigned declares, under penalty of perjury under the laws of the United States, that neither he nor the firm, association, or corporation of which he is a member, has, either directly or indirectly, entered into any agreement, participated in any collusion, or otherwise taken any action in restraint of free competitive bidding in connection with this bid.

The Undersigned has read the foregoing and hereby agrees to the conditions stated therein by affixing his signature below:

Signature of Authorized Company Representative

Typed Name and Title

()

Phone Number

()

Fax Number

Email Address



STATE OF ALASKA
DEPARTMENT OF NATURAL RESOURCES

BID SCHEDULE

Project Name: CSP: Eklutna Lake Trailhead Facility Improvements

Project Number: 73302-2

Before preparing this bid schedule, read carefully, Section 102 of the 2020 edition of the Standard Specifications for Highway Construction, and the following:

The Bidder shall insert, as called for, a unit price or lump sum price in figures opposite each pay item for which an estimated quantity appears in the bid schedule. A unit price or lump sum price is not to be entered or tendered for any pay item not appearing in the bid schedule. The estimated quantity of work for payment on a lump sum basis will be "All Required" (All Req'd) and as further specified in the contract.

Whenever a Contingent Sum is shown for any item in this schedule, such amount shall govern and be included in the bid total.

Conditioned or qualified bids will be considered non-responsive.

Notice: Contract award will be made on the basis of the total adjusted basic bid.

The bidder shall insert a unit bid price for each pay item listed below. Type or print legibly.

Pay Item Number	Pay Item Description	Pay Unit	Quantity	Unit Bid Price	Amount Bid
***** BASIC BID *****					
201.0009.0000	Clearing and Grubbing	L.S.	All Req'd	\$ (Lump Sum)	\$
202.0001.0000	Removal of Structures and Obstructions	L.S.	All Req'd	\$ (Lump Sum)	\$
203.2038.0000	Ditch Linear Grading	L.F.	50	\$	\$
301.0001.00D1	Aggregate Base Course, Grading D-1	TON	987	\$	\$
401.0001.002B	HMA, Type II; Class B	TON	483	\$	\$
611.0002.0001	Riprap, Class 1	TON	9	\$	\$
615.0001.0000	Standard Sign	S.F.	35	\$	\$
618.0002.0000	Seeding	LB	2	\$	\$
620.0002.000B	Topsoil, Class B	C.Y.	24	\$	\$

BID SCHEDULE
CSP: Eklutna Lake Trailhead
Facility Improvements
Project No. 73302-2

Name of Bidding Firm _____

Pay Item Number	Pay Item Description	Pay Unit	Quantity	Unit Bid Price	Amount Bid
***** CONTINUE BASIC BID *****					
622.2020.0000	Orientation Kiosk	EACH	1	\$	\$
622.2024.0000	Concrete Parking Bumper	EACH	21	\$	\$
622.2034.0000	Remove and Relocate Barrier Rock	EACH	14	\$	\$
631.0001.0002	Geotextile, Drainage, Class 2	S.Y.	41	\$	\$
640.0001.0000	Mobilization and Demobilization	L.S.	All Req'd	\$ (Lump Sum)	\$
641.0001.0000	Erosion, Sediment, and Pollution Control Administration	L.S.	All Req'd	\$ (Lump Sum)	\$
641.0002.000	Temporary Erosion, Sediment, and Pollution Control	C.S.	All Req'd	\$ 5,000.00	\$ 5,000.00
641.0006.0000	Withholding	C.S.	All Req'd	\$ 0.00	\$ 0.00
642.0001.000	Construction Surveying	L.S.	All Req'd	\$ (Lump Sum)	\$
642.0003.0000	Three Person Surveying Party	HOUR	5	\$	\$
643.0002.0000	Traffic Maintenance	L.S.	All Req'd	\$ (Lump Sum)	\$
647.0001.0000	Hydraulic Excavator, 1 CY, 100 HP, Minimum	HOUR	5	\$	\$
TOTAL BASIC BID					\$

No: _____ Expires _____
 Alaska Business License

No: _____ Expires _____
 Alaska Contractor's License

BID SCHEDULE
 CSP: Eklutna Lake Trailhead
 Facility Improvements
 Project No. 73302-2

Name of Bidding Firm _____



STATE OF ALASKA
DEPARTMENT OF NATURAL RESOURCES

CONSTRUCTION CONTRACT

CSP: Eklutna Lake Trailhead Facility Improvements, Project No. 73302-2

Project Name and Number

This CONTRACT, between the STATE OF ALASKA, DEPARTMENT OF NATURAL RESOURCES, herein called the Department, acting by and through its Contracting Officer, and

Company Name

Company Address (Street or PO Box, City, State, Zip)

a/an Individual Partnership Joint Venture Sole Proprietorship Corporation incorporated under the laws of the State of _____, its successors and assigns, herein called the Contractor, is effective the date of the signature of the Contracting Officer on this document.

WITNESSETH: That the Contractor, for and in consideration of the payment or payments herein specified and agreed to by the Department, hereby covenants and agrees to furnish and deliver all the materials and to do and perform all the work and labor required in the construction of the above-referenced project at the prices bid by the Contractor for the respective estimated quantities aggregating approximately the sum of

_____ Dollars (\$ _____), and such other items as are mentioned in the original Bid, which Bid and prices named, together with the Contract Documents are made a part of this Contract and accepted as such. *The Alaska Standard Specifications for Highway Construction, 2020 Edition* is incorporated by reference and made a part hereof as if set forth in full. *The Alaska Standard Specifications for Highway Construction* can be downloaded at <http://www.dot.state.ak.us/stwddes/dcsspecs/index.shtml>.

It is distinctly understood and agreed that no claim for additional work or materials, done or furnished by the Contractor and not specifically herein provided for, will be allowed by the Department, nor shall the Contractor do any work or furnish any material not covered by this Contract, unless such work is ordered in writing by the Department. In no event shall the Department be liable for any materials furnished or used, or for any work or labor done, unless the materials, work, or labor are required by the Contract or on written order furnished by the Department. Any such work or materials which may be done or furnished by the Contractor without written order first being given shall be at the Contractor's own risk, cost, and expense and the Contractor hereby covenants and agrees to make no claim for compensation for work or materials done or furnished without such written order.

The Contractor further covenants and agrees that all materials shall be furnished and delivered and all labor shall be done and performed, in every respect, to the satisfaction of the Department, on or before: **September 30, 2024** or within **N/A** calendar days. It is expressly understood and agreed that in case of the failure on the part of the Contractor, for any reason, except with the written consent of the Department, to complete the furnishing and delivery of materials and the doing and performance of the work before the aforesaid date, the Department shall have the right to deduct from any money due or which may become due the Contractor, or if no money shall be due, the Department shall have the right to recover **five hundred and fifty** dollars (**\$550.00**) per day for each calendar day elapsing between the time stipulated for the completion and the actual date of completion in accordance with the terms hereof; such deduction to be made, or sum to be recovered, not as a penalty but as liquidated damages.

The bonds given by the Contractor in the sum of **\$236,740.00** Payment Bond, and **\$236,740.00** Performance Bond, to secure the proper compliance with the terms and provisions of this Contract, are submitted herewith and made a part hereof.

IN WITNESS WHEREOF, the parties hereto have executed this Contract and hereby agree to its terms and conditions.

CONTRACTOR

Company Name

Signature of Authorized Company Representative

Typed Name and Title

Date

(Corporate Seal)

**STATE OF ALASKA
DEPARTMENT OF NATURAL RESOURCES**

Signature of Contracting Officer

Typed Name

Date



STATE OF ALASKA
DEPARTMENT OF NATURAL RESOURCES

PAYMENT BOND

Bond No. _____

For

CSP: Eklutna Lake Trailhead Facility Improvements, Project No. 73302-2

Project Name and Number

KNOW ALL WHO SHALL SEE THESE PRESENTS:

That _____
of _____ as Principal,
and _____
of _____ as Surety,
firmly bound and held unto the State of Alaska in the penal sum of _____ Dollars

(\$ _____) good and lawful money of the United States of America for the payment whereof, well and truly to be paid to the State of Alaska, we bind ourselves, our heirs, successors, executors, administrators, and assigns, jointly and severally, firmly by these presents.

WHEREAS, the said Principal has entered into a written contract with said State of Alaska, on the _____ of _____ A.D., 20____, for construction of the above-referenced project, said work to be done according to the terms of said contract.

Now, THEREFORE, the conditions of the foregoing obligation are such that if the said Principal shall comply with all requirements of law and pay, as they become due, all just claims for labor performed and materials and supplies furnished upon or for the work under said contract, whether said labor be performed and said materials and supplies be furnished under the original contract, any subcontract, or any and all duly authorized modifications thereto, then these presents shall become null and void; otherwise they shall remain in full force and effect.

IN WITNESS WHEREOF, we have hereunto set our hands and seals at _____, this _____ day of _____ A.D., 20____.

Principal: _____

Address: _____

By: _____

Contact Name: _____

Phone: () _____

Surety: _____

Address: _____

By: _____

Contact Name: _____

Phone: () _____

The offered bond has been checked for adequacy under the applicable statutes and regulations:

Alaska Department of Natural Resources Authorized Representative _____

Date _____

See Instructions on Reverse

INSTRUCTIONS

1. This form, for the protection of persons supplying labor and material, shall be used whenever a payment bond is required. There shall be no deviation from this form without approval from the Contracting Officer.
2. The full legal name, business address, phone number, and point of contact of the Principal and Surety shall be typed on the face of the form. Where more than a single surety is involved, a separate form shall be executed for each surety.
3. The penal amount of the bond, or in the case of more than one surety the amount of obligation, shall be typed in words and in figures.
4. Where individual sureties are involved, a completed Affidavit of Individual Surety shall accompany the bond. Such forms are available upon request from the Contracting Officer.
5. The bond shall be signed by authorized persons. Where such persons are signing in a representative capacity (e.g., an attorney-in-fact), but is not a member of the firm, partnership, or joint venture, or an officer of the corporation involved, evidence of authority must be furnished.



STATE OF ALASKA
DEPARTMENT OF NATURAL RESOURCES

PERFORMANCE BOND

Bond No. _____

For

CSP: Eklutna Lake Trailhead Facility Improvements, Project No. 73302-2

Project Name and Number

KNOW ALL WHO SHALL SEE THESE PRESENTS:

That _____
of _____ as Principal,
and _____
of _____ as Surety,
firmly bound and held unto the State of Alaska in the penal sum of _____ Dollars

(\$ _____) good and lawful money of the United States of America for the payment whereof, well and truly to be paid to the State of Alaska, we bind ourselves, our heirs, successors, executors, administrators, and assigns, jointly and severally, firmly by these presents.

WHEREAS, the said Principal has entered into a written contract with said State of Alaska, on the _____ of _____ A.D., 20____, for construction of the above-named project, said work to be done according to the terms of said contract.

Now, THEREFORE, the conditions of the foregoing obligation are such that if the said Principal shall well and truly perform and complete all obligations and work under said contract and if the Principal shall reimburse upon demand of the Department of Transportation and Public Facilities any sums paid him which exceed the final payment determined to be due upon completion of the project, then these presents shall become null and void; otherwise they shall remain in full force and effect.

IN WITNESS WHEREOF, we have hereunto set our hands and seals at _____, this _____ day of _____ A.D., 20____.

Principal: _____

Address: _____

By: _____

Contact Name: _____

Phone: () _____

Surety: _____

Address: _____

By: _____

Contact Name: _____

Phone: () _____

The offered bond has been checked for adequacy under the applicable statutes and regulations:

Alaska Department of Natural Resources Authorized Representative

Date

See Instructions on Reverse

INSTRUCTIONS

1. This form shall be used whenever a performance bond is required. There shall be no deviation from this form without approval from the Contracting Officer.
2. The full legal name, business address, phone number, and point of contact of the Principal and Surety shall be typed on the face of the form. Where more than a single surety is involved, a separate form shall be executed for each surety.
3. The penal amount of the bond, or in the case of more than one surety the amount of obligation, shall be typed in words and in figures.
4. Where individual sureties are involved, a completed Affidavit of Individual Surety shall accompany the bond. Such forms are available upon request from the Contracting Officer.
5. The bond shall be signed by authorized persons. Where such person is signing in a representative capacity (e.g., an attorney-in-fact), but is not a member of the firm, partnership, or joint venture, or an officer of the corporation involved, evidence of authority must be furnished.



STATE OF ALASKA
DEPARTMENT OF NATURAL RESOURCES

BID BOND

For

CSP: Eklutna Lake Trailhead Facility Improvements, Project No. 73302-2

Project Name and Number

DATE BOND EXECUTED: _____

PRINCIPAL (Legal name and business address):

TYPE OF ORGANIZATION:

	<input type="checkbox"/> Individual <input type="checkbox"/> Partnership <input type="checkbox"/> Joint Venture <input type="checkbox"/> Corporation
	STATE OF INCORPORATION: _____

SURETY(IES) (Name and business address):

A.	B.	C.
PENAL SUM OF BOND: _____		DATE OF BID: _____

We, the PRINCIPAL and SURETY above named, are held and firmly bound to the State (State of Alaska), in the penal sum of the amount stated above, for the payment of which sum will be made, we bind ourselves and our legal representatives and successors, jointly and severally, by this instrument.

THE CONDITION OF THE FOREGOING OBLIGATION is that the Principal has submitted the accompanying bid in writing, date as shown above, on the above-referenced Project in accordance with contract documents filed in the office of the Contracting Officer, and under the Invitation for Bids therefor, and is required to furnish a bond in the amount stated above.

If the Principal's bid is accepted and he is offered the proposed contract for award, and if the Principal fails to enter into the contract, then the obligation to the State created by this bond shall be in full force and effect.

If the Principal enters into the contract, then the foregoing obligation is null and void.

PRINCIPAL

Signature(s)	1.	2.	3.
Name(s) & Title(s) (Typed)	1.	2.	3.

Corporate Seal

See Instructions on Reverse

CORPORATE SURETY(IES)

Surety A	Name of Corporation		State of Incorporation	Liability Limit \$
Signature(s)	1.	2.		Corporate Seal
Name(s) & Titles (Typed)	1.	2.		

Surety B	Name of Corporation		State of Incorporation	Liability Limit \$
Signature(s)	1.	2.		Corporate Seal
Name(s) & Titles (Typed)	1.	2.		

Surety C	Name of Corporation		State of Incorporation	Liability Limit \$
Signature(s)	1.	2.		Corporate Seal
Name(s) & Titles (Typed)	1.	2.		

INSTRUCTIONS

1. This form shall be used whenever a bid bond is submitted.
2. Insert the full legal name and business address of the Principal in the space designated. If the Principal is a partnership or joint venture, the names of all principal parties must be included (e.g., "Smith Construction, Inc. and Jones Contracting, Inc. DBA Smith/Jones Builders, a joint venture"). If the Principal is a corporation, the name of the state in which incorporated shall be inserted in the space provided.
3. Insert the full legal name and business address of the Surety in the space designated. The Surety on the bond may be any corporation or partnership authorized to do business in Alaska as an insurer under AS 21.09. Individual sureties will not be accepted.
4. The penal amount of the bond may be shown either as an amount (in words and figures) or as a percent of the contract bid price (a not-to-exceed amount may be included).
5. The scheduled bid opening date shall be entered in the space marked Date of Bid.
6. The bond shall be executed by authorized representatives of the Principal and Surety. Corporations executing the bond shall also affix their corporate seal.
7. Any person signing in a representative capacity (e.g., an attorney-in-fact) must furnish evidence of authority if that representative is not a member of the firm, partnership, or joint venture, or an officer of the corporation involved.
8. The states of incorporation and the limits of liability of each surety shall be indicated in the spaces provided.
9. The date that bond is executed must not be later than the bid opening date.



STATE OF ALASKA
DEPARTMENT OF NATURAL RESOURCES

BID MODIFICATION

CSP: Eklutna Lake Trailhead Facility Improvements, Project No. 73302-2

Project Name and Number

Modification Number: _____

Note: Use this form to modify Manual (paper) bids only.

- Group items and provide subtotals by bid schedule section.
- All revisions shall be made to the unadjusted bid amount(s).
- Changes to the adjusted bid amounts will be computed by the Department.

LINE NO.	ITEM NO.	PAY ITEM DESCRIPTION	REVISION TO UNIT BID PRICE +/-	REVISION TO BID AMOUNT +/-

TOTAL REVISION: \$ _____

Name of Bidding Firm

Responsible Party Signature

Date

This form may be duplicated if additional pages are needed.



MATERIAL ORIGIN CERTIFICATE

Federal-Aid Contracts

Project Name and Number: _____

FOREIGN CONSTRUCTION MATERIALS AND PRODUCTS ¹	COUNTRY OF ORIGIN	COST ²

I certify under penalty of law that all construction materials, steel products, and iron products to be furnished for this project are manufactured in the United States, and comply with the requirements of Public Law No. 117-58, Sections 70901-52, 23 CFR 635.410, and Contract subsection 106-1.01, Buy America Provisions; except for those foreign construction materials and products that are listed on this page or on a separate and clearly identified attachment.³ The term “manufactured in the United States” is defined in Contract subsection 106-1.01, Buy America Provision.

I certify that I have knowledge that submitting false statements and/or information may result in civil and criminal penalties.

Authorized Corporate Signature

Date

Printed Name

Contractor’s Company Name

Position Title

Form 25D-60 Instructions:

1. Enter "NONE" on the first line if there are no exceptions.
2. Invoice cost for foreign construction materials, steel products, and iron products as delivered to the project including freight.
3. When the Contractor becomes aware of a change from or error in a previously submitted Material Origin Certificate, the Contractor shall submit an updated Material Origin Certificate. The Department of Transportation and Public Facilities shall not accept or approve any Material Origin Certificate over the limit specified in the contract.
4. Attach additional complete form sheets if necessary to include more than one page of materials and products.



Certificate of Buy America Act Compliance

Federal-Aid Contracts

Project Name and Number ¹	
Pay Item No. / Pay Item Description ²	Does 25D-60 need to be updated? <input type="checkbox"/> Yes <input type="checkbox"/> No

PRODUCT OR CONSTRUCTION MATERIAL ³	QUANTITY ⁴	NON-DOMESTIC OR UNKNOWN ORIGIN ⁵	DOMESTIC ⁵	PREDOMINANTLY IRON OR STEEL OR BOTH ^{6, 14}	CONSTRUCTION MATERIAL ⁷	MANUFACTURED PRODUCT ^{6, 14}	PROJECT SPECIFIC WAIVER ⁹	COST OF NON-DOMESTIC ORIGIN ¹⁰
		<input type="checkbox"/>	<input type="checkbox"/>	<input type="checkbox"/>	<input type="checkbox"/>	<input type="checkbox"/>	<input type="checkbox"/>	
		<input type="checkbox"/>	<input type="checkbox"/>	<input type="checkbox"/>	<input type="checkbox"/>	<input type="checkbox"/>	<input type="checkbox"/>	
		<input type="checkbox"/>	<input type="checkbox"/>	<input type="checkbox"/>	<input type="checkbox"/>	<input type="checkbox"/>	<input type="checkbox"/>	
		<input type="checkbox"/>	<input type="checkbox"/>	<input type="checkbox"/>	<input type="checkbox"/>	<input type="checkbox"/>	<input type="checkbox"/>	

As the Supplier's authorized representative, I certify that, as of the date of my signature below, all iron or steel products, all products predominantly of iron or steel or a combination of both, all manufactured products, and all construction materials listed and classified above as domestic meet the domestic requirements of 23 CFR §635.410 and 2 CFR Part 184. If an iron or steel product, a product predominantly of iron or steel or a combination of both, a manufactured product, or construction materials are non-domestic, then I further certify that the cost shown above is a true and accurate value of the product and/or material including shipping to the project location.

As the Contractor's authorized representative, I certify that the above products and/or materials will be incorporated into the project, and I further certify that the cumulative amount of all non-domestic iron or steel products, products predominantly of iron or steel or a combination of both, manufactured products, and construction materials do not exceed, as appropriate, the minimal use allowance under 23 C.F.R. §635.410(b)(4) or the de minimis allowance under the USDOT's "Waiver of Buy America Requirements for De Minimis Costs and Small Grants" published in the Federal Register at 88 FR 55817.

I acknowledge that submission of false or misleading statement information may result in civil and criminal penalties.

Supplier's Authorized Representative Signature

Date

Printed Name

Position

Prime Contractor's Authorized Representative Signature

Date

Printed Name

Position

Form 25D-62 Instructions:

1. Enter the project name, state number, and federal number as they appear on the contract.
2. Enter the pay item number and description as they appear on the bid schedule.
3. Use a description that allows identification of the product of material in the retained documentation and at the project site.
4. Do not enter a generic description like “all required”. Use a quantity that matches the retained documentation used to certify cost on Form 25D-60.
5. Choose either domestic or non-domestic as required by Section 106-1.01, Buy America Provision
6. Check this column if the product is predominantly steel or iron, or a combination of both as defined in Section 106-1.01.
7. Check this column if product is a Construction Material as defined in Section 106-1.01, Buy America Provision
8. Check this column if product is a Manufactured Product as defined in Section 106-1.01, Buy America Provision. The cost of non-domestic product(s) shall include predominantly steel or iron components of a manufactured product, such as steel wire mesh or steel reinforcing components of a precast reinforced concrete pipe.
9. Check this column if FHWA has issued a project-specific waiver for the product.
10. Enter the cost of the non-domestic product(s) for the associated quantity. Provide an updated Form 25D-60 when the non-domestic material counts towards the contract allowance.
11. Keep a copy of the waiver with the retained documentation when the non-domestic material is subject to an applicable waiver.
12. Enter the total cost of the products/materials that are non-domestic.
13. Attach additional form sheets if necessary to include more than one page of products and materials.
14. Check both manufactured product column and steel or iron column if the manufactured product contains components that are predominantly steel and/or iron, or a combination of both.



STATE OF ALASKA
DEPARTMENT OF NATURAL RESOURCES

EEO-1 CERTIFICATION
Federal-Aid Contracts

CSP: Eklutna Lake Trailhead Facility Improvements, Project No. 73302-2
Project Name and Number

This certification is required by the Equal Employment Opportunity Regulations of the Secretary of Labor [41 CFR 60-1.7 (b) (1)] and must be completed by the successful Bidder and each proposed Subcontractor participating in this contract.

PLEASE CHECK APPROPRIATE BOXES

The Bidder Proposed Subcontractor hereby CERTIFIES:

PART A Bidders and proposed Subcontractors with 50 or more year-round employees and a federal contract amounting to \$50,000 or more are required to submit one federal Standard Report Form 100 during each year that the two conditions exist (50 employees and a \$50,000 federal contract).

The company named below (Part C) is exempt from the requirements of submitting the Standard Report Form 100 this year.

NO (go to PART B) YES (go to PART C)

Instructions and blank Standard Report Form 100's may be obtained from a local U.S. Department of Labor office, or by writing to:

The Joint Reporting Committee
P.O. Box 779
Norfolk, Virginia 23501

Telephone number: (757) 461-1213

PART B The company named below has submitted the Standard Report Form 100 this year.

NO YES

Note: Bidders and proposed Subcontractors who have not filed the required Standard Report Form 100 and are not exempt from filing requirements will not be awarded this contract or subcontract until Form 100 has been filed for the current year ending June 30.

PART C

Signature of Authorized Company Representative	Title
Company Name	Company Address (Street or PO Box, City, State, Zip)
Date	Phone Number

SPECIAL PROVISIONS

to the

STATE OF ALASKA

DEPARTMENT OF TRANSPORTATION AND PUBLIC FACILITIES
2020 STANDARD SPECIFICATIONS for HIGHWAY CONSTRUCTION

CSP: EKLUTNA LAKE TRAILHEAD

FACILITY IMPROVEMENTS

PROJECT NUMBER 73302-2

SECTION 101

DEFINITIONS AND TERMS

101-1.03 DEFINITIONS.

DEPARTMENT. Replace with the following: The Alaska Department of Natural Resources, Division of Parks and Outdoor Recreation.

(01/01/01) PARKS-Special Provision

ROADWAY. Replace with the following: The portion of a highway or park facility including shoulders within the limits of construction.

(01/01/01) PARKS-Special Provision

SECTION 102

BIDDING REQUIREMENTS AND CONDITIONS

102-1.04 EXAMINATION OF PLANS, SPECIFICATIONS, SPECIAL PROVISIONS, AND WORK SITE. Replace the second paragraph with the following: Material Reports and/or Soils Investigation Reports are not available for this project.

(01/01/01) PARKS-Special Provision

SECTION 105

CONTROL OF WORK

105-1.02 PLANS AND WORKING DRAWINGS. Add the following to the first paragraph:
Full size plan sheets are 11" by 17". Plans are not available in CAD digital format.

(01/01/01) PARKS-Special Provision

105-1.11 RELATED SECTIONS.

Section 651, Work by Others (Reserved)

(01/28/16) CR105.5-Special Provision

105-1.13 MAINTENANCE DURING CONSTRUCTION.

Replace the first sentence of the first paragraph with the following: The Contractor shall maintain the entire area located within the project limits from the date construction begins until the Contractor receives a letter of substantial completion.

(03/09/17) PARKS-Special Provision

105-1.15 PROJECT COMPLETION. In the third paragraph, first sentence, replace:
"Section 621" with "Subsection 618-3.06 and 621-3.04."

(02/02/15) PARKS-Special Provision

SECTION 106 CONTROL OF MATERIALS

106-1.01 SOURCE OF SUPPLY AND QUALITY REQUIREMENTS. Replace the BUY AMERICA PROVISION with the following:

BUY AMERICA PROVISION. On projects using federal funds, the Contractor shall comply with the requirements of Public Law No. 117-58, Sections 70901-52 and 23 CFR 635.410, Buy America requirements, and shall submit a completed Material Origin Certificate, Form 25D-60, prior to award of the contract. When the Contractor becomes aware of a change from or error in a previously submitted Material Origin Certificate (Form 25D-60), the Contractor shall submit an updated Material Origin Certificate (Form 25D-60). All construction materials, steel products and iron products which are incorporated into the work, shall be manufactured in the United States except that minor amounts of construction materials, steel products and iron products of foreign manufacture may be used, provided the aggregate cost of such does not exceed one tenth of one percent (0.001) of the total contract amount, or \$2,500, whichever is greater. For the purposes of this paragraph, the cost is the value of the products as they are delivered to the project including freight.

The Contractor shall ensure that all manufacturing processes for each covered product comply with this Buy America Provision. Non-conforming products shall be replaced at no expense to the State. Failure to comply may also subject the Contractor to default and debarment.

Provide a Certificate of Buy America Act Compliance Form 25D-62 from the supplier for each construction material, steel product, or iron product and each component that is manufactured predominantly of steel or iron, prior to incorporating any construction material, steel products, iron products or any components manufactured predominantly of steel or iron into the project. The supplier certifying Form 25D-62 may be the original manufacturer, fabricator, vendor, contractor, or subcontractor; provided the supplier has sufficient control and knowledge of the manufacturing process to accept responsibility and certify full and complete conformance with the certification statement on the form. Provide mill certificates when required by the Engineer. False statements may result in criminal penalties prescribed under AS 36.30.687 and Title 18 US Code Section 1001 and 1020.

Buy America does not apply to construction materials, steel products, and iron products brought to the construction site and removed at or before the completion of the project. Further, it does not apply to construction materials, steel products, and iron products which remain in place at the Contractor's convenience.

The North American Free Trade Agreement (NAFTA) does not apply to the Buy America requirement. There is a specific exemption within NAFTA (article 1001) for grant programs such as the Federal-aid highway program.

SPECIAL PROVISIONS
CSP: Eklutna Lake Trailhead
Facility Improvements
Project No. 73302-2

Construction Materials

A construction material includes an article, material, or supply other than

1. an item of primarily iron or steel;
2. a manufactured product;
3. cement and cementitious materials;
4. aggregates such as stone, sand, or gravel; or
5. aggregate binding agents or additives

– that is or consists primarily of

1. Non-ferrous metals;
2. Plastic and polymer-based products (including polyvinylchloride, composite building materials, and polymers used in fiber optic cables);
3. Glass (including optic glass);
4. Lumber; or
5. Drywall.

For construction materials, manufactured in the United States means the final manufacturing process and the immediately preceding manufacturing stage were undertaken in the United States.

An item that consists of two or more construction materials combined together through a manufacturing process, and items that include at least one construction material combined with another material through a manufacturing process, will be treated as a manufactured product instead of a construction material. Manufactured products that are not predominantly steel or iron are not subject to Buy America requirements.

Steel and Iron Products

“Manufactured in the United States” means all manufacturing processes starting with the initial mixing and melting through the final shaping, welding, and coating processes must be undertaken in the United States. The definition of “manufacturing process” is smelting or any subsequent process that alters the material’s physical form, shape or chemical composition. These processes include rolling, extruding, machining, bending, grinding, drilling, etc. The application of coatings, such as epoxy coating, galvanizing, painting or any other coating that protects or enhances the value of steel or iron materials shall also be considered a manufacturing process subject to the requirements of Section 106-1.01, Buy America Provision and of the Buy America Act.

Buy America does not apply to iron ore, pig iron, and processed, pelletized and reduced iron ore.

SPECIAL PROVISIONS
CSP: Eklutna Lake Trailhead
Facility Improvements
Project No. 73302-2

When steel and iron products manufactured in the United States are shipped to a foreign country where non steel or iron products are installed on or in them (e.g., electronic components in a steel cabinet), the steel and iron is considered to meet the requirements of this subsection.

HSP20.7-110822

SECTION 107

LEGAL RELATIONS AND RESPONSIBILITY TO PUBLIC

107-1.02 PERMITS, LICENSES, AND TAXES.

Add the following to the second paragraph:

3. The Department has received the following permits on the Contractor's behalf:
 - a. See Appendix A

(2/12/2024) PARKS-Special Provision

Add the following to the fourth paragraph:

10. Provide a wetland specialist to conduct the determination and delineations of sites outside the project limits or not previously permitted, impacted by the Contractor's operations. These delineations will be subject to Corps of Engineers approval. The wetland specialist shall conduct wetlands determinations and delineations according to the Corps of Engineers 1987 Wetland Delineation Manual, and the Regional Supplement to the Corps of Engineers Wetland Delineations Manual (Alaska Region, Version 2.0, September 2007).

(01/04/2021) PARKS-Special Provision

107-1.11 PROTECTION AND RESTORATION OF PROPERTY AND LANDSCAPE.

Add the following:

Non-municipal Water Source. If water is required for a construction purpose from a nonmunicipal water source, obtain a Temporary Water Use Permit from the Water Resource Manager, and provide a copy to the Engineer. The Water Resource Manager is with the Department of Natural Resources in Anchorage and may be contacted at (907) 269-8645.

(05/15/17) CR107.3-Special Provision

Add the following: All clearing and/or grubbing activities shall take place outside of the Migratory Bird Treaty Act (MBTA) window as determined by the U.S. Fish and Wildlife Service (FWS). Recommended time periods to avoid vegetation clearing May 1 – July 15.

(01/25/2021) PARKS-Special Provision

Add the following:

SPECIAL PROVISIONS
CSP: Eklutna Lake Trailhead
Facility Improvements
Project No. 73302-2

Eagles. Eagles are protected under 16 U.S.C. 668-668c Protection of Bald and Golden Eagles, that prohibits “takes” of eagles, their eggs, nests, or any part of the bird. The Act defines “taking” as “to pursue, shoot, shoot at, poison, wound, kill, capture, trap, collect, molest, or disturb.”

Maintain a Primary Zone of minimum 330-feet as an undisturbed habitat buffer around nesting eagles. If topography or vegetation does not provide an adequate screen or separation, extend the buffer to 1320-feet, or a sufficient distance to screen the nest from human activities. The actual distance will depend on site conditions and the individual eagle’s tolerance for human activity. Within the Secondary Zone, between 330-feet and 660-feet from a nest tree, no obtrusive facilities, or major habitat modifications shall occur. If nesting occurs in sparse stands of trees, treeless areas, or where activities would occur within line-of-site of the nest, extend the buffer up to 2640-feet. No blasting, logging and other noisy, disturbing activities should occur during the nesting period (February 1 – August 31) within the primary or secondary zones.

Do not disturb a nesting eagle. Notify the Engineer when an active eagle nest is within the primary or secondary zones.

(10/101/18) CR107.1-Special Provision

Add the following Subsection:

107-1.21 FEDERAL AFFIRMATIVE ACTION. Affirmative steps must be taken to comply with Federal Equal Employment Opportunity (EEO) and Disadvantaged Business Enterprise (DBE) requirements as applicable to this Contract. The Alaska Department of Transportation and Public Facilities maintains a list of registered DBEs and may be contacted at (907) 269-0851 to obtain a copy of that list. Exercise good faith effort to comply with affirmative action requirements and make all documentation available to the Engineer upon request.

(03/09/17) PARKS-Special Provision

SECTION 108

PROSECUTION AND PROGRESS

108-1.01 SUBLETTING OF CONTRACT. Delete paragraph one and replace with the following: The Contractor shall submit a Contractor Self Certification for Subcontractors and Lower Tier Subcontractors, Form 25D-042, before the Contractor or any subcontractor sublets, sells, transfers, assigns, or otherwise disposes of the Contract or any portion of the Contract. The Department has authority to review subcontracts and to deny permission to sublet work. The Department may penalize the Contractor for false statements or omissions made in connection with Form 25D-042.

Delete paragraph four and replace with the following:

1. The Contractor shall ensure that for all subcontracts (agreements):
 - a. The Department is furnished with one completed Contractor Self certification, Form 25D-042, for each subcontract;
 - b. The required prompt payment provisions of AS 36.90.210, as well as other items listed in Form 25D-042, are included in the subcontracts;
 - c. The subcontractors pay current prevailing rate of wages as per Subsection 107-1.04 and file certified payrolls with the Engineer and DOLWD for all work performed on the project; and
 - d. Upon receipt of a request for more information regarding subcontracts, the requested information is provided to the Department within 5 calendar days.

(05/02/11) PARKS-Special Provision

108-1.02 NOTICE TO PROCEED. Add the following: The Contractor may request a Limited Notice to Proceed after the Award has been made, to permit him to order long lead materials which would cause delays in project completion. However, granting is within the sole discretion of the Contracting Officer, and refusal or failure to grant a Limited Notice to Proceed shall not be a basis for claiming for delay, extension of time, or alteration of price.

(6/30/98) PARKS-Special Provision

108-1.03 PROSECUTION AND PROGRESS. Replace the last sentence of the first paragraph with the following: Submit the following at the Preconstruction Conference:

SPECIAL PROVISIONS
CSP: Eklutna Lake Trailhead
Facility Improvements
Project No. 73302-2

Replace item 1. A progress schedule. with the following:

1. A Critical Path Method (CPM) Schedule is required, in a format acceptable to the Engineer, showing the order the work will be carried out and the contemplated dates the Contractor and subcontractors will start and finish each of the salient features of the work, including scheduled periods of shutdown. Indicate anticipated periods of multiple shift work in the CPM Schedule. Revise to the proposed CPM Schedule promptly. Promptly submit a revised CPM Schedule if there are substantial changes to the schedule, or upon request of the Engineer.

(1/29/21) PARKS-Special Provision

SECTION 109

MEASUREMENT AND PAYMENT

109-1.01 GENERAL

Replace the 2nd paragraph with the following:

When more than one type of material or work is specified for a pay item, the proposal line number, and the description are used to differentiate the material or work.

(01/01/2020) CR109.4-Special Provision

109-1.02 MEASUREMENT OF QUANTITIES. Add the following:

14. Hour. Measured items by the hour shall be full payment for the work described in the contract including labor, equipment, and operating costs of the equipment. Items to be measured by the hour will be recorded to the nearest quarter-hour by the Engineer. The measurement shall start when the required equipment & operator, surveyor, or survey party begins work at the specified location as directed by the Engineer. The measurement will stop when the required work is accomplished, when the equipment fails, when directed to stop work by the Engineer, or when the operator stops work. Times will be reconciled with the Contractor on a daily basis.

(02/23/15) PARKS-Special Provision

109-1.05 COMPENSATION FOR EXTRA WORK ON TIME AND MATERIALS BASIS.

Under item 3. Equipment, subitem a. Hourly Rental Rate, add the following to the second paragraph: The rental rate area adjustment factors for this project shall be as specified on the adjustment maps for the Alaska – South region.

Provide a printed copy of the current EquipmentWatch rate sheet for each piece of equipment utilized on the time and materials work.

(11/1/2018) CR109.2-Special Provision

109-1.08 FINAL PAYMENT. Add the following after the fifth paragraph of this subsection:

On federally funded projects, if DOLWD Wage and Hour Administration notifies the Department of a pending prevailing wage investigation, and that the investigation is preventing the closing out of the project, the Contractor may place the notified amount in escrow under Wage and Hour for the exclusive purpose of satisfying unpaid prevailing wages. Upon receipt of notice from Wage and Hour that the contractor has satisfactorily transferred the necessary funds into escrow, the Department will proceed to issue final payment.

(11/30/2020) HSM20-3-Standard Modification

SPECIAL PROVISIONS

CSP: Eklutna Lake Trailhead

Facility Improvements

Project No. 73302-2

SECTION 120

DISADVANTAGED BUSINESS ENTERPRISE (DBE) PROGRAM

Delete Section 120 Disadvantaged Business Enterprise (DBE) Program

(03/01/17) CR120.1-Special Provision

SPECIAL PROVISIONS
CSP: Eklutna Lake Trailhead
Facility Improvements
Project No. 73302-2

SECTION 201

CLEARING AND GRUBBING

201-3.01 GENERAL. Add the following: All clearing and/or grubbing activities shall abide by the Migratory Bird Treaty Act (MBTA).

(09/15/08) PARKS-Special Provision

Add the following: The Contractor shall perform the work necessary to preserve and/or restore land monuments and property corners from damage. A land monument or property corner that is disturbed shall be restored according to Section 642 at the Contractor's expense. An undisturbed area 5 foot in diameter may be left around existing monuments and property corners. A list of land monuments and property corners is shown on the Right of Way maps.

(06/10/04) R107-Special Provision

201-3.02 CLEARING. Add the following: Remove branches to provide 12 feet vertical clearance above road surface, shoulder to shoulder. Remove branches to provide 10 feet vertical clearance above sidewalk, deck, trail and pathway surfaces.

(01/01/01) PARKS-Special Provision

201-3.06 DISPOSAL. Replace paragraphs three and four with the following: Combustible material from any operations shall be disposed of by transporting to locations outside the park-controlled lands. Burning will not be permitted in other areas close to the park to cause, as determined by the Engineer, a fire danger to the park resources.

Burning will not be permitted on private lands without the written approval of the property owner. The approval of the Engineer shall be required on a day-to-day basis when burning is within a two-mile radius of the park lands. Constant care by competent watchmen with immediate access to adequate firefighting equipment shall be required during burning operations. Full compliance with applicable laws and ordinances will be the Contractor's responsibility.

(01/01/01) PARKS-Special Provision

201-4.01 METHOD OF MEASUREMENT.

Add the following: Removal of branches for vertical clearance in accordance with Subsection 201-3.02 will not be measured directly for payment but will be considered subsidiary to work in this Section.

(01/01/01) PARKS-Special Provision

SPECIAL PROVISIONS
CSP: Eklutna Lake Trailhead
Facility Improvements
Project No. 73302-2

SECTION 202

REMOVAL OF STRUCTURES AND OBSTRUCTIONS

202-1.01 DESCRIPTION. Replace the first sentence with the following: This work shall consist of, but not be limited to, the removal of a fee station, wooden parking bumpers, sign bases, and sign structures and any other obstructions which are not designated or permitted to remain, except for the obstructions to be removed and disposed of under other items in the contract.

(2/12/2024) PARKS-Special Provision

202-3.01 GENERAL. Replace paragraphs four and five with the following: Remove and satisfactorily dispose of materials not designated to be salvaged and materials determined by the Engineer to be unusable to the Department.

Add the following Subsection:

202-3.06 SALVAGE AND DISPOSAL OF CONSTRUCTION AND DEMOLITION MATERIALS.

Unless otherwise noted, remove, handle, salvage, transport, store, and dispose waste materials according to the Occupational, Safety, and Health Administration (OSHA), Environmental Protection Agency (EPA), Alaska Department of Environmental Conservation (ADEC), and other Federal, State and local government agency's statutes, rules and regulations.

Use disposal sites outside the project right-of-way limits unless directed otherwise, in writing, by the Engineer. Obtain written consent from the private or public property owner for such disposal and a waiver of all claims against the State for any damage to such land which may result, together with all permits required by law for such disposal. Furnish a copy of such permission, waiver of claims, and permits to the Engineer before commencing work. Grade disposal areas to drain.

(04/01/20) CR202.1-Special Provision

202-5.01 BASIS OF PAYMENT.

In the first paragraph, replace the words "and 22.0013.____." with the following: "and 202.0013.____."

In the fourth paragraph, replace the words "Items 020.0014.____" with the following: "Items 202.0014.____"

(11/30/20) HSM20-4-Standard Modification

SPECIAL PROVISIONS
CSP: Eklutna Lake Trailhead
Facility Improvements
Project No. 73302-2

Add the following:

Acquiring waste disposal permits is subsidiary to 202 Pay Items.

(04/01/20) CR202.1-Special Provision

SECTION 203

EXCAVATION AND EMBANKMENT

203-1.01 DESCRIPTION. Add the following:

Ditch linear grading shall consist of the final shaping of designated ditches and slopes for drainage by grading with a small dozer, motor grader, or other suitable means approved by the Engineer.

(04/01/20) CR203.2-Special Provision

203-3.03 EMBANKMENT CONSTRUCTION. Add the following:

Cut and fill slopes shall be constructed to template. At the direction of the Engineer, the Contractor may be required to finish all slopes by a method of hand raking. This work shall be at no additional cost to the State. The finished slope surface parallel to the shoulder line shall not vary more than 0.10 foot when tested using a 10-foot straightedge. The finished slope surface perpendicular to the shoulder line shall not vary more than 0.10 foot for the following slope ratios and corresponding straightedge lengths: 2:1 slope and two-foot length; 3:1 slope and three-foot length; 4:1 slope and four-foot length; 5:1 slope and five-foot length; and 6:1 slope and six-foot length.

(01/01/01) PARKS-Special Provision

203-3.04 COMPACTION WITH MOISTURE AND DENSITY CONTROL. In the second paragraph of this subsection, delete the words: “and ATM 214.”

(11/30/20) HSM20-5-Standard Modification

203-4.01 METHOD OF MEASUREMENT. Add the following: Item 203.2038.0000. By the length measured along the bottom of the ditch.

(02/13/2024) PARKS-Special Provision

203-5.01 BASIS OF PAYMENT. Add the following: Payment for Item 203.2038.0000 Ditch Linear Grading will be full compensation for furnishing equipment, labor, tools, and incidentals to provide the preparation, excavation and shaping necessary to complete the work.

PAY ITEM

Item Number	Item Description	Unit
203.2038.0000	Ditch Linear Grading	L.F.

(01/01/14) CR203.2-Special Provision

SPECIAL PROVISIONS
CSP: Eklutna Lake Trailhead
Facility Improvements
Project No. 73302-2

SECTION 301

AGGREGATE BASE COURSE

301-3.01 PLACING. Add the following:

Place base course material, used for the sidewalk and pathway foundations, with equipment capable of providing a specified depth and uniform surface.

(06/21/16) CR301.2-Special Provision

301-3.03 COMPACTION. In the second paragraph of this subsection, delete the words: "and ATM 214."

(11/30/20) HSM20-5-Standard Modification

Replace Section 401 with the following:

SECTION 401

HOT MIX ASPHALT

401-1.01 DESCRIPTION. Construct one or more courses of plant-mixed, hot mix asphalt (HMA) pavement on the areas as shown on the plans.

MATERIALS

401-2.01 COMPOSITION OF MIXTURE - JOB MIX DESIGN. Use an Alaska DOT&PF Type II, Class B approved Job Mix Design. The Job Mix Design must have been accepted within the calendar year of construction.

401-2.02 TACK COAT. Special Tack Emulsion, STE-1 conforming to Subsection 702-2.03.

401-2.03 PROCESS QUALITY CONTROL. Sample and test materials for quality control of the asphalt concrete mixture according to Subsection 106-1.03.

Submit a paving and plant control plan at the pre-paving meeting to be held a minimum of 5 working days before initial paving operations. Address the sequence of operations and joint construction. Outline steps to assure product consistency, to minimize segregation, and to prevent premature cooling of the asphalt concrete mixture. Include a proposed quality control testing frequency for gradation, asphalt cement content, and compaction.

CONSTRUCTION REQUIREMENTS

401-3.01 WEATHER LIMITATIONS. Do not place the hot mix asphalt on a wet surface, on an unstable/yielding roadbed, when the base material is frozen, or when weather conditions prevent proper handling or finishing of the mix. Do not place hot mix asphalt unless the roadway surface temperature is 40 °F or warmer.

401-3.02 EQUIPMENT, GENERAL. Use equipment in good working order and free of hot mix asphalt buildup. Make equipment available for inspection and demonstration of operation a minimum of 24 hours before placement of hot mix asphalt.

401-3.03 ASPHALT MIXING PLANT. Meet AASHTO M 156. Use an asphalt plant designed to dry aggregates, maintain accurate temperature control, and accurately proportion asphalt cement and aggregates. Calibrate the asphalt plant and furnish copies of the calibration data to the Engineer at least 4 hours before hot mix asphalt production.

Provide a scalping screen at the asphalt plant to prevent oversize material or debris from being incorporated into the hot mix asphalt.

SPECIAL PROVISIONS

CSP: Eklutna Lake Trailhead
Facility Improvements
Project No. 73302-2

401-3.04 HAULING EQUIPMENT. Haul hot mix asphalt in trucks with tight, clean, smooth metal beds, thinly coated with a minimum amount of paraffin oil, lime water solution, or an approved manufactured asphalt release agent. Do not use petroleum fuel as an asphalt release agent.

During hot mix asphalt hauling activities, the hauling vehicle will have covers attached and available for use. Be prepared to demonstrate deployment of the covers when hauling material or empty. Illustrate the efficiency of deployment and how the materials are protected from the environment and the environment is protected from the materials. Cover the hot mix asphalt in the hauling vehicle(s) when directed by the Engineer.

401-3.05 ASPHALT PAVERS. Use self-propelled pavers equipped with a heated vibratory screed. Control grade and cross slope with automatic grade and slope control devices. Use an erected string line, a 30-foot minimum mobile stringline (ski) or other approved grade follower, to automatically actuate the paver screed control system. Use grade control either (a) both the high and low sides or (b) grade control on the high side and slope control on the low side.

Equip the paver with a receiving hopper having sufficient capacity for a uniform spreading operation and a distribution system to place the hot mix asphalt uniformly in front of the screed.

Use a screed assembly that produces a finished surface of the required smoothness, thickness, and texture without tearing, shoving, or displacing the hot mix asphalt.

Equip the paver with a means of preventing segregation of the coarse aggregate particles from the remainder of the hot mix asphalt when carried from the paver hopper back to the augers. Use means and methods approved by the paver manufacturer. Means and methods may consist of chains, deflector plates, or other similar devices or combination of devices. Provide a Certificate of Compliance that verifies the means and methods required to prevent segregation are being used.

401-3.06 ROLLERS. Use both steel-wheel (static or vibratory) and pneumatic-tire rollers. Avoid crushing or fracturing aggregate. Use rollers designed to compact hot mix asphalt mixtures and reverse without backlash.

Use fully skirted pneumatic-tire rollers having a minimum operating weight of 3,000 pounds per tire.

401-3.07 PREPARATION OF EXISTING SURFACE. Prepare existing surface in conformance with the Plans and Specifications. Clean existing paved surfaces of loose material.

Uniformly coat contact surfaces of curbing, gutters, sawcut pavement, cold joints, manholes, and other structures with tack coat material prior to placing the hot mix asphalt. Allow tack coat to break before placement of hot mix asphalt.

SPECIAL PROVISIONS

CSP: Eklutna Lake Trailhead
Facility Improvements
Project No. 73302-2

401-3.08 PREPARATION OF ASPHALT. Provide a continuous supply of asphalt cement to the asphalt mixing plant at a uniform temperature, within the allowable mixing temperature range.

401-3.09 PREPARATION OF AGGREGATES. Dry the aggregate so the moisture content of the hot mix asphalt does not exceed 0.5% (by total weight of mix), as determined by WAQTC FOP for AASHTO T 329.

Heat the aggregate for hot mix asphalt to a temperature compatible with the mix requirements specified.

Adjust the burner on the dryer to avoid damage to the aggregate and to prevent the presence of unburned fuel on the aggregate. Hot mix asphalt containing soot or fuel is considered unacceptable and is subject to the requirements of Subsection 105.-1.11.

401-3.10 MIXING. Combine the aggregate, asphalt cement, and additives in the mixer in the amounts required by the Job Mix Design. Mix to obtain 98% coated particles when tested according to AASHTO T 195.

For batch plants, put the dry aggregate in motion before addition of asphalt cement.

401-3.11 PLACING AND SPREADING. Place the hot mix asphalt upon the approved surface, spread, strike off, and adjust surface irregularities. Use asphalt pavers to distribute hot mix asphalt, including leveling courses. The maximum compacted lift thickness allowed is 3 inches.

Use hand tools to spread, rake, and lute the hot mix asphalt in areas where irregularities or unavoidable obstacles make the use of mechanical spreading and finishing equipment impractical.

Do not pave against new Portland cement concrete pads or curbing until it has cured for at least 72 hours.

401-3.12 COMPACTION. Thoroughly and uniformly compact the hot mix asphalt by rolling. In areas not accessible to large rollers, compact with mechanical tampers or trench rollers.

The target value for density is 96% of the maximum specific gravity (MSG), as determined by WAQTC FOP for AASHTO T 209.

Do not leave rollers or other equipment standing on hot mix asphalt that has not cooled sufficiently to prevent indentation.

401-3.13 JOINTS. Minimize the number of joints. Ensure that all joints have the same texture and smoothness as other sections of the course.

SPECIAL PROVISIONS
CSP: Eklutna Lake Trailhead
Facility Improvements
Project No. 73302-2

Remove to full depth improperly formed joints resulting in surface irregularities. Replace with new material, and thoroughly compacted.

Precut all pavement removal to a neat line with a power saw or by other approved method.

Form transverse joints by cutting back on the previous run to expose the full depth of the layer. Saw cut the joint, use a removable bulkhead, or other method approved by the Engineer.

401-3.14 PATCHING DEFECTIVE AREAS. Remove any hot mix asphalt that becomes contaminated with foreign material, is segregated, flushing, bleeding, or is in any way determined to be defective. Do not skin patch. Remove defective materials for the full thickness of the course. Cut the pavement so that all edges are vertical, the sides are parallel to the direction of traffic. Coat edges with a tack coat and allow to cure. Place and compact fresh hot mix asphalt to grade and smoothness requirements.

401-4.01 METHOD OF MEASUREMENT. Section 109 and the following:

Hot Mix Asphalt.

By weighing. No deduction will be made for the weight of asphalt cement or anti- stripping additive.

Job Mix Design, asphalt cement, anti-strip additive, tack coat, and other incidentals to complete the work under this Section will not be measured separately for payment but shall be considered subsidiary to the respective hot mix asphalt pay item.

401-5.01 BASIS OF PAYMENT.

Item 401.0001.002B Hot Mix Asphalt, Type II; Class B will be paid for by the ton in place completed and accepted. Job Mix Design, asphalt cement, anti-strip additive, tack coat, and other incidentals are subsidiary to this pay item.

Payment will be made under:

PAY ITEM		
Item Number	Item Description	Unit
401.0001.002B	Hot Mix Asphalt, Type II; Class B	TON

(05/02/11) PARKS-Special Provision

SPECIAL PROVISIONS
CSP: Eklutna Lake Trailhead
Facility Improvements
Project No. 73302-2

SECTION 615

STANDARD SIGN

615-1.01 DESCRIPTION. Add the following: Custom signs are standard signs that require additional definition of layout, including characters, symbols, borders, size, and color. Custom signs that are to be included on this project are as follow:

DESIGNATION	COLOR	DESCRIPTION
CS-1	White on Brown	Informational Sign – No Fires
CS-2	White on Brown	Informational Sign – No Camping
CS-3	White on Brown	Informational Sign – Arrow
CS-4	White on Brown	Informational Sign – No ATVs on Roadway

CS-1 are informational signs with characteristics conforming to MUTCD chapter 2B and indicate that no fires are to be set in the area. As sign RA-030 overlaid with a red circle with a red line through it.

CS-2 are informational signs with characteristics conforming to MUTCD chapter 2B and indicate that camping in the area isn't allowed. As sign RM-010 overlaid with a red circle with a red line through it.

CS-3 are informational signs with characteristics conforming to MUTCD chapter 2B and indicate a direction in reference to other signs. The sign contains a filled arrow, and its dimensions are 12"x6".

CS-4 are informational signs with characteristics conforming to MUTCD chapter 2B and indicate that ATVs are not allowed on the roadway. The sign contains the ATV image from the RL-170 overlaid with a red circle with a red line through it and the text "ON ROADWAY 11 ACC 12.020", and its dimensions are 12"x18".

615-2.01 MATERIALS.

Add the following under 2. Sign Fabrication:

d. Custom Signs: The signs shall have high intensity reflective sheeting with color as specified. White sheeting for symbols, letters, and borders shall match the 3M Scotchlite High Intensity Reflective Sheeting #3870 or #6870. Brown sheeting for background shall match 3M Scotchlite Reflective Sheeting #3879 or #6879.

(01/01/01) PARKS -Special Provision

SPECIAL PROVISIONS
CSP: Eklutna Lake Trailhead
Facility Improvements
Project No. 73302-2

Payment will be made under:

PAY ITEM

Item Number	Item Description	Unit
615.0001.0000	Standard Sign	S.F.

(05/02/11) PARKS-Special Provision

SPECIAL PROVISIONS
CSP: Eklutna Lake Trailhead
Facility Improvements
Project No. 73302-2

Replace Section 618 with the following:

**SECTION 618
SEEDING**

618-1.01 DESCRIPTION. Establish a healthy living perennial stand of grass or other vegetative living groundcover by seeding. Maintain the living cover for the term of the Contract.

618-2.01 MATERIALS. Use materials that conform to the following:

Water	Subsection 712-2.01
Seed	Section 724 (Grass Seed)
Fertilizer	Section 725
Topsoil	Section 726
Soil Stabilization	Section 619
Soil Stabilization Material	Section 727

**TABLE 618-1
GRASS SEED MIX, SOIL STABILIZER, AND FERTILIZER APPLICATION RATES**

Materials	Ingredients	Application Rate (per MSF ^c)
Grass Seed Mix ^{a, b}	Nortran – Tufted Hairgrass	0.60 lbs.
	Arctared – Red Fescue	0.45 lbs.
	Wainwright - Slender Wheatgrass	0.37 lbs.
	Annual Ryegrass	<u>0.08 lbs.</u>
Soil Stabilizer Slope ≤ 3:1	Mulch	46 lbs.
	Slope >3:1	45-58 lbs.
Fertilizer	20-20-10	12 lbs.

- a. Do not remove the tags from seed bags.
- b. Submit an alternate seed mix when the specified seed is not commercially available. Provide a letter confirming the specified seed is not available. Include an agronomist certified seed mix design, including application rate, suited to the project site.
- c. MSF = 1000 ft².

CONSTRUCTION REQUIREMENTS

618-3.01 SURFACE PREPARATION. Remove ruts, holes, humps and other irregularities from the surface. Clear stones four inches in diameter and larger, weeds, plant growth, sticks, stumps, and other debris that will interfere with the application of stabilization material, topsoil, the seeding operation, growth of vegetative groundcover, and subsequent maintenance of the cover.

Smooth the slopes for a uniform appearance and round the top and bottom of the slopes to facilitate tracking or raking. Do not disrupt drainage flow lines.

SPECIAL PROVISIONS
CSP: Eklutna Lake Trailhead
Facility Improvements
Project No. 73302-2

Evenly place stabilization material and or topsoil when specified.

Prepare the surface material by grooving the material in a uniform pattern that is perpendicular to the fall of the slope. Use one or more of the following grooving methods with associated equipment before the application of seed:

1. Manual raking with landscaping rake;
2. Mechanical track walking with track equipment; or
3. Mechanical raking with a scarifying slope board. Form one-inch wide grooves spaced no more than six inches apart.

618-3.02 SEEDING SEASON. Seed disturbed areas after permanent cessation of ground disturbing activities in that area, within the period specified in the Alaska Department of Environmental Conservation (ADEC) Alaska Pollutant Discharge Elimination System (APDES) Construction General Permit (CGP) for Alaska, Section 4.5 Soil Stabilization, and Section 641 Erosion, Sediment, and Pollution Control.

Do not seed during windy conditions, when climatic conditions or ground conditions would hinder placement or proper growth.

Seed between May 15 and August 15.

618-3.03 APPLICATION. Seed, seeding, reseeding includes the application of seed, fertilizer, and stabilization material.

If the seed mix, fertilizer and stabilization material are not included in the Plans or Specifications, including their application rates, use the recommendations of the ADNR and the Revegetation Manual for Alaska.

Do not seed areas of bedrock and plant beds.

Use any of the following methods:

1. Hydraulic Method

Apply seed and stabilization material in one application when using the hydraulic method. Apply fertilizer with the hydraulic method. Include the fertilizer with the seed and stabilization material or apply separately.

- a. Furnish and place a slurry made of seed, fertilizer, water, and other materials.
- b. Use hydraulic seeding equipment that will maintain a continuous agitation and apply a homogeneous mixture through a spray nozzle. The pump must produce enough pressure to maintain a continuous, nonfluctuating spray that will reach the extremities of the seeding area with the pump unit located on the roadbed. Provide

SPECIAL PROVISIONS
CSP: Eklutna Lake Trailhead
Facility Improvements
Project No. 73302-2

enough hose to reach areas not practical to seed from the nozzle unit situated on the roadbed.

- c. If mulch material is required, it may be added to the water slurry in the hydraulic seeder after adding the proportionate amounts of seed and fertilizer. Add seed to the slurry mixture no more than 30 minutes before application.
- d. Mix the slurry and apply it evenly.

2. Dry Methods

- a. Use mechanical spreaders, seed drills, landscape seeders, aircraft, cultipacker seeders, fertilizer spreaders, or other approved mechanical spreading equipment.
- b. Spread fertilizer separately at the specified rate.

618-3.04 MAINTENANCE. Maintenance includes but is not limited to the following:

1. Protecting seeded areas against traffic by approved warning signs or barricades and against erosion.
2. Repairing surfaces gullied or otherwise damaged following seeding. Fill erosion gullies 4 inches deep and greater filling the gully to surrounding grade including the portions less than 4 inches deep. Apply and prepare the stabilization material and or topsoil for seeding. Seed repaired area. Refer to Subsections 618-3.01 & 3.03.
3. Reseeding areas not showing evidence of satisfactory growth within 3 weeks of seeding and after repairs are complete. Reseed bare patches of soil more than 10 square feet in area. Contact ADNR for advice or corrective measures, when seeded areas are not showing evidence of satisfactory growth.
4. Watering seeded areas for healthy growth of vegetative cover. Adjust the amount of water when directed.

618-3.05 ACCEPTANCE. The vegetative ground cover will be inspected considering each station and each side of the road a separate area. Acceptance of the ground cover requires a minimum of 75% cover density in the inspection area, gullies repaired and reseeded, and no bare patches of soil more than 10 square feet in area.

Repair/reseed areas that are not accepted.

618-3.06 PERIOD OF ESTABLISHMENT. Establishment period, for each seeded area, extends one complete growing season (May 1 to August 15) after the planting year, acceptance, and final inspection beginning from the date of Project completion, Subsection 105-1.15.

SPECIAL PROVISIONS
CSP: Eklutna Lake Trailhead
Facility Improvements
Project No. 73302-2

Employ all possible means to preserve/maintain the new vegetative groundcover in a healthy and vigorous condition to ensure successful establishment. Maintain the vegetative cover, according to Subsection 618-3.04, to not less than the requirements for acceptance, Subsection 618-3.05.

618-4.01 METHOD OF MEASUREMENT. Section 109 and as follows:

Seeding by the Pound. By the weight of dry seed acceptably seeded and maintained.

618-5.01 BASIS OF PAYMENT.

1. Pay Item 618.0002.0000 Seeding. Payment is for healthy established vegetative groundcover through the establishment period.
 - a. The initial surface preparation, seed, fertilizer, mulch when applied hydraulically, their application, and the water for hydraulic application are subsidiary.
 - b. Maintenance fill, stabilization material, topsoil, surface preparation, seed, fertilizer, mulch when applied hydraulically, and the water required for hydraulic application are subsidiary.

Except for maintenance, stabilization material is paid under Section 619 and topsoil under Section 620.

PAY ITEM

Item Number	Item Description	Unit
618.0002.0000	Seeding	LB

CR618-23.0601

SPECIAL PROVISIONS
 CSP: Eklutna Lake Trailhead
 Facility Improvements
 Project No. 73302-2

SECTION 620

TOPSOIL

620-2.01 MATERIALS. Replace this Subsection with the following:

Provide topsoil of the class specified on the Plans. Use material that conform to the following:

Topsoil Section 726 or as approved by the Engineer

Topsoil shall be free of invasive material.

(03/09/17) PARKS-Special Provision

Replace Section 622 with the following:

SECTION 622

PARK FACILITIES

622-1.01 DESCRIPTION. This work shall consist of furnishing, constructing and placing park facilities in conformance with the plans and Special Provisions.

622-1.02 APPLICABLE ACCESSIBILITY STANDARD. Americans with Disabilities Act (ADA) Accessibility Guidelines for Buildings and Facilities.

622-1.03 SUBMITTALS AND SUBSTITUTIONS. Conform to Subsection 106-1.01.

MATERIALS

622-2.01 GENERAL. All materials shall be new and conform to the details shown on the plans or as specified.

622-2.02 BACKFILL. Selected Material, Type A conforming to Subsection 703-2.07.

622-2.03 CONCRETE. Class A Concrete conforming to Section 501.

622-2.04 STRUCTURAL STEEL. Structural steel shall conform to the requirements of ASTM Specification A36 (Standard Specification for Carbon Structural Steel).

622-2.05 GALVANIZING. Conform to AASHTO M111/ASTM A123 (Standard Specification for Zinc [Hot-Dip Galvanized] Coatings on Iron and Steel Products), or AASHTO M232/ASTM A153 (Standard Specification for Zinc Coating[Hot-Dip] on Iron and Steel Hardware). Repair damaged galvanizing by using low melting point zinc repair rods in conformance with ASTM A780 (Standard Practice for Repair of Damaged and Uncoated Areas of Hot-Dip Galvanized Coatings).

622-2.06 LUMBER. Conform to Section 713. Wood species shall be Douglas Fir or Hem-fir unless otherwise specified.

1. Dimensional. Dimensional lumber and timbers are shown on the plans in nominal dimensions, i.e.; 2x4, indicating surfaced four sides (S4S) or planed material. Use classification for light framing shall be Construction Grade. Use classification for structural joists and planks shall be No. 2 Grade or Better. Manufacturing classification shall be Dressed (Surfaced) Lumber. Size classification shall be Nominal Size Designations of Boards, Dimension, and Timbers.
2. Rough Cut. Unless otherwise indicated, rough cut lumber and timbers are shown on the plans in actual dimensions, i.e.; 2"x4", indicating rough cut material. Use

SPECIAL PROVISIONS

CSP: Eklutna Lake Trailhead
Facility Improvements
Project No. 73302-2

classification shall be Structural Lumber, No. 2 Grade or Better. Manufacturing classification shall be Rough Lumber. Size classification shall be Rough Dry Sizes.

622-2.07 TREATED LUMBER. Wood species conforms to Subsection 622-2.06.

Treatment shall be as follows:

1. Above Ground Applications. Preservative pressure treatment shall conform to Section 714. Pressure treat with preservative Ammonical Copper Quat - Type A,B,C, or D(ACQ-A,B,C, or D) or Copper Azole – Type A (CBA-A). Minimum retention shall be 0.40 pounds per cubic foot or to refusal. Treated materials shall be uniformly brown in color and nonincised. This type of treated lumber is commonly used for residential decks for above ground applications. Incising may be used on 4x and thicker material to obtain minimum retention.
2. Ground Contact Applications. Preservative pressure treatment shall conform to Section 714. Pressure treat with preservative Ammonical Copper Quat - Type A,B,C, or D(ACQ-A,B,C, or D) or Copper Azole – Type A (CBA-A). Minimum retention shall be 0.60 pounds per cubic foot. Exposed treated materials shall be pigmented uniformly brown in color by manufacturer.

622-2.08 RECYCLED PLASTIC LUMBER. Recycled plastic lumber shall contain a minimum of 90% recycled HDPE. Recycled plastic lumber shall have a minimum flexural strength of 1355 psi and compressive strength of 1420 psi as determined by ASTM D6109, minimum specific gravity of 0.861 g/cc as determined by ASTM D6111, and a maximum thermal expansion of 0.000033 inch/inch/degree F as determined by ASTM D6341. The lumber shall also incorporate an ultraviolet stabilizer at the time of manufacturing. Color shall be as determined by the Engineer.

622-2.09 METAL ROOFING. Exposed fastener metal roof system with panel base metal steel conforming to ASTM A446, Grade 80, (80,000 psi minimum tensile strength) with a protective coating of zinc-aluminum alloy conforming to ASTM A924/ASTM A792, 45 percent zinc and 55 percent aluminum by weight applied to a thickness of 1.9 mils. Alternate coatings proposed for substitution will not be accepted. Exterior paint finish to be a 0.8 mil Acrylic Emulsion finish coat over a 0.2 mil baked-on acrylic primer. Exterior color to match Denali Green by IMSA Building Products Inc., or approved equal. Interior paint finish to be a 0.25 mil off-white backer over a 0.15 mil baked-on acrylic primer.

1. Roof Panels. Minimum 29 gauge, 36 inch net width panel with 9 inch on center roll-formed profile pattern consisting of three evenly spaced ribs, one tall rib followed by two shorter ribs.
2. Gable Trim and Universal Ridge. Shall be approximately 6 inches wide.
3. Closure Strips. Polyethylene foam type to fit panel profile or 1 inch by 1 inch universal closures.

SPECIAL PROVISIONS
CSP: Eklutna Lake Trailhead
Facility Improvements
Project No. 73302-2

4. Sidelap Mastics. Closed cell neoprene butyl.
5. Fasteners. Metal to wood fasteners as recommended by the manufacturer. Fastener length should assure penetration of at least one inch into the wood. Fastener heads shall be pre-painted the same color as roof panels.

622-2.10 FASTENERS. Commercial quality and type of nails and screws as required to securely hold all members in place in accordance with National Design Specifications (NDS). Nails shall be hot dipped galvanized. All other fasteners shall be corrosion resistant. Fasteners in pressure treated wood shall be hot dipped galvanized. Nails and wood screws below grade in pressure treated wood shall be stainless steel.

622-2.11 PAINT. Unless otherwise specified, use the following paint types and colors, or approved equals:

1. Solid Oil Stain. Exterior oil/alkyd flat finish stain, color "Russet". DF7XX as manufactured by Fuller O'Brien / Devoe Products, Sun-Proof Solid Alkyd/Oil Stain (77-1354) as manufactured by Pittsburgh Paint Company, Behr Plus 10 Solid Stain, Rural Manor II Solid Color Stain (714401x) as manufactured by Rodda Paint Co., or approved equivalent. Submit color samples of proposed substitutions for approval.
2. Semi-Transparent Oil Stain. Exterior alkyd based stain, color Sherwin Williams "SW 3507 Riverwood", Behr Superdeck "#1907 Canyon Brown", or PPG Architectural Finishes Olympic "Russet".
3. Clear Oil Stain. Non-pigmented penetrating exterior alkyd base stain formulated for water repellency.
4. Metal Primer Paint. As recommended by enamel paint manufacturer.
5. Enamel Paint. Exterior alkyd base gloss enamel. Color to match solid oil stain color.
6. Concrete Sealer. Clear acrylic copolymer conforming to AASHTO M148/ASTM C309 (Standard Specification for Liquid Membrane-Forming Compounds for Curing Concrete, for Type 1 Compounds).
7. Above Ground Wood Preservative. Brown preservative with active ingredient of minimum 9.08 percent copper naphthenate (equivalent to minimum 1 percent metallic copper). Color to be approved by Engineer.
8. Below Ground Wood Preservative. Preservative with active ingredient of minimum 16 percent copper naphthenate (equivalent to minimum 2 percent metallic copper).
9. End Cut Preservative for Treated Wood. Brown preservative with active ingredient of minimum 10 percent copper naphthenate (equivalent to minimum 1 percent metallic copper). Color to match preservative pressure treatment color.

SPECIAL PROVISIONS
CSP: Eklutna Lake Trailhead
Facility Improvements
Project No. 73302-2

Paint that has been frozen or is out of date shall be replaced at no additional cost to the Department.

622-2.12 CONCRETE PARKING BUMPER. Conform to Standard Drawing P-6, Parking Bumper.

622-2.13 BARRIER ROCK/SEAT ROCK. Barrier rocks shall be 3 to 5 feet in diameter when measured in every direction. Seat rocks are barrier rocks that have one relatively flat surface and can be use for a seat when installed in the ground. Seat rocks shall be selected by the Engineer from the Contractor's rock source.

622-2.14 ORIENTATION KIOSK. Conform to Standard Drawing S-10D, Orientation Kiosk. Interpretive panel frame and bulletin board frame shall be surfaced four sides clear cedar. Metal Roof shall conform to subsection 622-2.09.

Column bases shall be corrosion resistant and embedded in wet concrete for subsequent connection of wood post to concrete footing. Size column base to dimension of post. Posts shall have commercially fabricated column bases inset a maximum of 1/2 inch. If commercial bases cannot meet the 1/2-inch requirement, custom fabricate full dimension column bases. Stirrup shall be provided with holes for two galvanized bolts with washers. Similar to Simpson CB88.

Post Size	Base Plate Gage & Dimension	Stirrup Material	Post Bolts	Allowable Uplift Load
8 X 8	7 ga & 7-1/2" X 7-1/2"	3 ga x 3" strap	2 each 3/4"	6,650 pounds

Column caps to connect front posts to front horizontal beam shall be corrosion resistant. Size column cap to dimension of the timbers. If commercial column caps cannot meet the timber dimensions, custom fabricate full dimension column caps. Install with manufacturer recommended fasteners. Similar to Simpson BC8.

Beam Size / Post Size	Beam Flange Gage & Dimension	Post Flange Gage & Dimension	Allowable Uplift Load	Allowable Lateral Load
8 X 8 / 8 X 8	18 ga & 7-1/2" X 7-1/2"	18 ga & 7-1/2" X 7-1/2"	1,800 pounds	2,000 pounds

Face mount hangers to connect the side horizontal beam to the front posts shall be corrosion resistant. Size hangers to dimension of the timbers. If commercial hangers cannot meet the timber dimensions, custom fabricate full dimension hangers. Hangers shall have concealed flanges. Install with manufacturer recommended fasteners to achieve the allowable uplift load specified below. Similar to Simpson HUC88.

Beam Size / Post Size	Beam Flange Gage & Dimension	Post Flange Gage & Height	Allowable Uplift Load
8 X 8 / 8 X 8	14 ga & 7-1/2" X 2-1/2"	14 ga & 6-5/8"	1,285 pounds

SPECIAL PROVISIONS
 CSP: Eklutna Lake Trailhead
 Facility Improvements
 Project No. 73302-2

Corner bracket to connect the side horizontal beams to the rear posts and rear horizontal beam shall be custom fabricated as shown on the Standard drawing.

Hurricane tie to secure roof trusses to horizontal front and rear beams shall be 18-gauge steel and corrosion resistant. Install with manufacturer recommended fasteners to achieve 320 pounds minimum uplift load and 105 pounds minimum lateral load. Similar to Simpson H3.

CONSTRUCTION REQUIREMENTS

622-3.01 GENERAL. The location shown on the drawings for park facilities placement are approximate. The Engineer will field locate park facilities at the time of construction.

622-3.02 EXCAVATION AND BACKFILL. Conform to the requirements of Section 204 and the details on the plans.

622-3.03 CONCRETE. Conform to the requirements of Section 501 and the details on the plans.

622-3.04 STRUCTURAL STEEL. Welding to conform to American Welding Society D1.1.

622-3.05 WOOD. Competent carpenters shall be employed, and all framing shall be true and exact. Unless otherwise specified, nails and spikes shall be hand driven with just sufficient force to set the heads flush with the surface of wood. Power nail guns may be used if the pressure may be adjusted to drive the nail flush with the face of the lumber. All non-removable shipping, storage, weathering and erection marks on fabricated lumber shall be hidden from view in the completed work. Use of damaged lumber shall not be allowed. Store on-site lumber above the ground and protected from damage and weathering.

Holes for round drift-bolts and dowels shall be bored with a bit 1/16 inch smaller in diameter than that of the bolt or dowel used. Holes for machine and carriage bolts shall be bored with a bit of the same diameter as that of the bolt. Holes for lag screws shall be bored with a bit not larger than the body of the screw at the root of the thread.

Unless otherwise specified, USS flat washers shall be used in contact with all bolt heads and nuts that would otherwise be in contact with wood.

622-3.06 METAL ROOFING. Store sheets and other roofing components above the ground and keep dry. Metal roofing shall not come into contact with lead, aluminum, copper, alkalines, fertilizers, or acids. Panels shall be clean and unmarked during and after erection.

Place roofing felt over 2x6 T&G. Lap felt 4 inches minimum at sides and top and 10 inches at ridge.

SPECIAL PROVISIONS

CSP: Eklutna Lake Trailhead

Facility Improvements

Project No. 73302-2

Position first roof panel at gable end away from prevailing wind and check for alignment with building structure. Panels shall overhang sheathing at eave, as shown on the drawing, as a drip edge. Sidelap mastic shall be installed continuously along edge of panels. Do not place fasteners through the sidelap mastic. Install wood-metal screws at 24 inches on center at major ribs and stitch screws at 12 inches on center at sidelaps.

Align roof panels correctly prior to ridge cap installation. Install closure strips under ridge cap and fasten through cap, closure strips, and roofing at each major rib.

Install closure strip under panel prior to flashing installation. Fasten at 12 inches on center with stitch screws.

Apply gable trim to both roof ends. Fasten at top and sides at 24 inches on center.

622-3.07 PAINT. Deliver in sealed containers with labels legible and intact. Remove dirt, grease, oil and other construction debris prior to painting. Ensure that surfaces to be painted are even, smooth, sound, clean, dry, and free from defects affecting proper application. Metal surfaces to receive paint shall be corrosion free. Apply per manufacturer's recommendations. Apply paint material evenly without runs, sags, or other defects. Work each coat into the material being coated at an average rate of coverage recommended by the manufacturer. Cover surfaces completely to provide uniform color and appearance. Remove all paint, stain, or other finish material where it has spilled or spattered.

1. General. Unless otherwise specified, schedule finishes as follows:

- a. Non-Treated Wood, Surfaced. Finish surfaces not scheduled to receive stain or clear oil stain with wood preservative.
- b. Non-Treated Wood, Rough Cut. Saturate below and above ground surfaces not scheduled to receive stain with wood preservative.
- c. Treated Wood, Hidden. Dado cuts, cut ends, drilled holes and field cuts in wood materials shall be brush coated to saturation with end cut preservative.
- d. Treated Wood, Exposed. Saturate cut surfaces with scheduled finish. Finish surfaces not scheduled to receive stain with wood preservative.
- e. Concrete and Masonry. Seal exposed surfaces.
- f. Metal. Prime and paint exposed metal surfaces as required. Finish is not required for fasteners that are galvanized or corrosion resistant.

2. Concrete Parking Bumper.

- a. Concrete. Sealer

SPECIAL PROVISIONS
CSP: Eklutna Lake Trailhead
Facility Improvements
Project No. 73302-2

3. Orientation Kiosk.

- a. Interp/Bulletin Board Frame and Exposed T&G Wood. Clear Oil Stain
- b. Other Wood. Semi-Transparent Oil Stain
- c. Metal. Primer and Enamel Paint
- d. Bulletin Board Sound Board. Off White Flat Latex Paint

622-3.08 CONCRETE PARKING BUMPER. Construct in accordance with Standard Drawing P-6, Parking Bumper.

622-3.09 ORIENTATION KIOSK. Construct in accordance with Standard Drawing S-10D, Orientation Kiosk.

622-4.01 METHOD OF MEASUREMENT. Park facilities with the unit measure each will be measured by the actual number of facilities completed and accepted.

Excavation and embankment for park facilities outside the limits shown on the plans will be measured for payment only if directed by the Engineer. Excavation and backfill required for items paid for under this Section will not be measured for payment.

Seat rocks at Orientation Kiosks will be subsidiary to that item and will not be measured separately for payment.

622-5.01 BASIS OF PAYMENT. The accepted quantity of park facilities will be paid for at the contract unit price per unit of measurement for the type specified completed in place, and listed below excluding all clearing, grubbing, topsoil and crushed aggregate base course, which shall be paid for separately at contract unit prices.

ADA Accessible models of a park facility item will be compensated at the same unit price as the standard model.

Payment will be made under:

PAY ITEM

Item Number	Item Description	Unit
622.2020.0000	Orientation Kiosk	EACH
622.2024.0000	Concrete Parking Bumper	EACH
622.2034.0000	Remove and Relocate Barrier Rock	EACH

(02/3/20) PARKS-Special Provision

SPECIAL PROVISIONS
CSP: Eklutna Lake Trailhead
Facility Improvements
Project No. 73302-2

Replace Section 641 with the following:

**SECTION 641
EROSION, SEDIMENT, AND POLLUTION CONTROL**

641-1.01 DESCRIPTION. Plan, provide, inspect, and maintain control of erosion, sedimentation, water pollution, and hazardous materials contamination.

641-1.02 DEFINITIONS. These definitions apply only to Section 641.

Alaska Department of Environmental Conservation (ADEC). The state agency authorized by EPA to administer the Clean Water Act's National Pollutant Discharge Elimination System.

Alaska Pollutant Discharge Elimination System (APDES). A system administered by ADEC that issues and tracks permits for storm water discharges.

Best Management Practices (BMPs). Temporary or permanent structural and non-structural devices, schedules of activities, prohibition of practices, maintenance procedures, and other management practices to prevent or minimize the discharge of pollutants to waters of the United States. BMPs also include, but are not limited to, treatment requirements, operating procedures, and practices to control plant site runoff, spillage or leaks, sludge or waste disposal, or drainage from material storage.

Clean Water Act (CWA). Federal Water Pollution Control Amendments of 1972, as amended (33 U.S.C. 1251 et seq.).

Construction Activity. Physical activity by the Contractor, Subcontractor or utility company; that may result in erosion, sedimentation, or a discharge of pollutants into storm water. Construction Activity includes soil disturbing activities (e.g. clearing, grubbing, grading, excavating); and construction materials or equipment storage or maintenance (e.g. material piles, borrow area, concrete truck chute washdown, fueling); and other industrial storm water directly related to the construction process (e.g. concrete or asphalt batch plants).

Environmental Protection Agency (EPA). A federal agency charged to protect human health and the environment.

Erosion and Sediment Control Plan (ESCP). The Department's project specific document that illustrates measures to control erosion and sediment on the project.

Final Stabilization. Final stabilization occurs when soil disturbing activities at the site have been completed and one of the following methods, as identified in the contract, has been completed: (a) establish a uniform and evenly distributed perennial vegetative cover with a density of 70 percent of the native background vegetative cover, or (b) construct non-erodible permanent stabilization measures (such as riprap, gabions, geotextiles, pavement, and crushed aggregate base course) where vegetative cover is not required.

SPECIAL PROVISIONS

CSP: Eklutna Lake Trailhead
Facility Improvements
Project No. 73302-2

Haul Route. Existing or newly constructed road where construction materials are transported and where disposition of sediments or erodible materials may result from the material hauling activity or from the Contractor's activity to construct or maintain the road.

Hazardous Material Control Plan (HMCP). The Contractor's detailed project specific plan for prevention of pollution from storage, use, transfer, containment, cleanup, and disposal of hazardous material (including, but are not limited to, petroleum products related to construction activities and equipment). The HMCP is included as an appendix to the ESCP.

Multi-Sector General Permit (MSGP). The Alaska Pollutant Discharge Elimination System General Permit for storm water discharges associated with industrial activity.

Pollutant. Any substance or item meeting the definition of pollutant contained in 40 CFR § 122.2. A partial listing from this definition includes: dredged spoil, solid waste, sewage, garbage, sewage sludge, chemical wastes, biological materials, wrecked or discarded equipment, rock, sand, cellar dirt and industrial or municipal waste.

Project Area. The physical area provided by the Department for Construction. The Project Area includes the area of the facility under construction, project staging and equipment areas, and material and disposal sites; when those areas, routes and sites, are provided by the Department by the Contract and are directly related to the Contract. Support Activities including material sites, material processing sites, disposal sites, haul routes, staging and equipment storage areas; that are furnished by the Contractor or a commercial operator, are not included in the Project Area.

Spill Prevention, Control, and Countermeasure Plan (SPCC Plan). The Contractor's detailed plan for petroleum spill prevention and control measures that meet the requirements of 40 CFR 112.

Spill Response Field Representative. The Contractor's representative with authority and responsibility for managing, implementing, and executing the HMCP and SPCC Plan.

Subcontractor Spill Response Coordinator. The subcontractor's representative with authority and responsibility for coordinating the subcontractor's activities in compliance with the HMCP and SPCC Plan.

Superintendent. The Superintendent has responsibility and authority for the overall operation of the Project and for Contractor furnished sites and facilities directly related to the Project.

Temporary Stabilization. The protection of exposed soils (disturbed land) from wind and water erosion during the construction process until final stabilization occurs.

SPECIAL PROVISIONS
CSP: Eklutna Lake Trailhead
Facility Improvements
Project No. 73302-2

641-1.04 SUBMITTALS. Submit two copies each of the SPCC, HMCP, and amended ESCP, if applicable, to the Engineer for approval. Sign submittals. Deliver these documents to the Engineer.

The Department will review the submittals within 14 calendar days. Submittals will be returned to the Contractor as either requiring modification, or as approved by the Department.

The final ESCP, approved HMCP, and submitted SPCC Plan become the basis of the work required for the project's erosion, sediment, and pollution controls.

641-2.01 EROSION SEDIMENT CONTROL PLAN (ESCP) REQUIREMENTS. The Department will develop the project's base ESCP and include it as an appendix in the Special Provisions. The Contractor shall prepare any amendments to the ESCP based on scheduling, equipment, and use of alternative BMPs. The ESCP must include both erosion control and sediment control measures. The plan must address first preventing erosion, then minimizing erosion, and finally trapping sediment before it leaves the project site. The plan must address site specific controls and management plan for the construction site. The plan must also incorporate the requirements of the project permits.

The Contractor is responsible for amending the ESCP to include site specific control and management plan for material sites, waste disposal sites, haul routes, and other affected areas, public or private.

Specify the line of authority and designate a field representative for implementing ESCP compliance.

641-2.02 HAZARDOUS MATERIAL CONTROL PLAN (HMCP) REQUIREMENTS. Prepare the HMCP for prevention of pollution from storage, use, containment, cleanup, and disposal of all hazardous material, including petroleum products related to construction activities and equipment. Include the HMCP as an appendix to the ESCP. Compile Material Safety Data Sheets in one location and reference that location in the HMCP.

Designate a Contractor's Spill Response Field Representative with 24-hour contact information. Designate a Subcontractor Spill Response Coordinator for each subcontractor. The Superintendent and Contractor's Spill Response Field Representative must have 24-hour contact information for each Subcontractor Spill Response Coordinator and the Utility Spill Response Coordinator.

List and give the location and estimated quantities of hazardous materials (Including materials or substances listed in 40 CFR 117 and 302, and petroleum products) to be used or stored on the Project. Hazardous materials must be stored in covered storage areas. Include secondary containment for all hazardous material storage areas.

Identify the locations where fueling and maintenance activities will take place, describe the activities, and list controls to prevent the accidental spillage of petroleum products

SPECIAL PROVISIONS
CSP: Eklutna Lake Trailhead
Facility Improvements
Project No. 73302-2

and other hazardous materials. Controls include placing absorbent pads or other suitable containment under fill ports while fueling, and under equipment during maintenance or repairs.

Use secondary containment under all stationary equipment (equipment that does not have a seat for driving) that contains petroleum products. Use secondary containment under pumps, compressors, and generators.

List the types and approximate quantities of response equipment and cleanup materials available on the Project. Include a list and location map of cleanup materials, at each different work site and readily available off site (materials sources, material processing sites, disposal sites, staging areas, etc). Spill response materials must be stored in sufficient quantity at each work location, appropriate to the hazards associated with that site.

Describe procedures for containment and cleanup of hazardous materials. Describe a plan for the prevention, containment, cleanup, and disposal of soil and water contaminated by spills. Describe a plan for dealing with contaminated soil and water encountered during construction. Clean up of spills or contaminated surfaces must be initiated immediately and completed as soon as practicable.

Describe methods of disposing of waste petroleum products and other hazardous materials generated by the Project, including routine maintenance. Identify haul methods and final disposal areas. Assure final disposal areas are permitted for hazardous material disposal.

Describe methods of complying with the requirements of AS 46.04.010-900, Oil and Hazardous Substances Pollution Control, and 18 AAC 75. Include contact information for reporting hazardous materials and petroleum product spills to the Project Engineer and reporting to federal, state and local agencies.

641-2.03 SPILL PREVENTION, CONTROL AND COUNTERMEASURE PLAN (SPCC) REQUIREMENTS. Prepare and implement an SPCC Plan when required by 40 CFR 112; when both of the following conditions are present on the Project:

- a. Oil or petroleum products from a spill may reach navigable waters (as defined in 40 CFR 112); and
- b. Total above ground storage capacity for oil and any petroleum products is greater than 1,320 gallons (not including onboard tanks for fuel or hydraulic fluid used primarily to power the movement of a motor vehicle or ancillary onboard oil-filled operational equipment, and not including containers with a storage capacity of less than 55 gallons)

Reference the SPCC Plan in the HMCP and ESCP.

SPECIAL PROVISIONS
CSP: Eklutna Lake Trailhead
Facility Improvements
Project No. 73302-2

641-2.05 MATERIALS. Use materials suitable to withstand hydraulic, wind, and soil forces, and to control erosion and trap sediments according to the requirements of the CGP and the Specifications.

- Use the temporary seed mixture specified by special provision or use annual rye grass if no temporary seed mix is specified.
- Use soil stabilization material as specified in Section 727.
- Use silt fences as specified in Section 729.
- Use straw that is certified as free of noxious weed by the United States Department of Agriculture, Natural Resources Conservation Service, Local Soil and Water Conservative District. Alaska Weed Free Forage Certification Program must be used when available. Hay may not be substituted for straw.
- Use a rain gauge.

641-3.01 CONSTRUCTION REQUIREMENTS. Comply with the requirements of the CWA.

1. Starting Construction.

- Do not begin Construction Activity until authorized by the Engineer
Post notices on the outside wall of the project office, and at publicly accessible locations near the beginning and end of the Project. Protect postings from the weather and locate so the public can read them without obstructing construction activities (for example, at an existing pullout). Include the following information in each of the postings:
 - Name and phone number of Contractor
Keep the updated ESCP, HMCP and SPCC at the on-site project office. If there isn't an on-site project office, keep the information at a location suitable to the Engineer.

Ensure all subcontractors and utility companies operating within the Project understand and comply with the ESCP.

Install sediment controls in accordance with the ESCP and before beginning Construction Activity that may result in land disturbance.

2. During Construction.

Comply with requirements of the HMCP and SPCC, and all state and federal regulations that pertain to the handling, storage, cleanup, and disposal of petroleum products or other hazardous substances. Contain, clean up, and dispose of discharges of petroleum products and other hazardous materials. Perform fueling operations in a safe and environmentally responsible manner. Place absorbent pads under fill ports while fueling, and under equipment during maintenance or repairs. Install secondary containment under all stationary equipment that contains petroleum products.

SPECIAL PROVISIONS
CSP: Eklutna Lake Trailhead
Facility Improvements
Project No. 73302-2

Comply with the requirements of 18 AAC 75 and AS 46, Oil and Hazardous Substances Pollution Control. Report petroleum product spills as required by federal, state and local law, and as described in the HMCP and SPCC.

Comply with the requirements of the SWPPP. Implement temporary and permanent erosion and sediment control measures identified in the SWPPP. Keep the SWPPP current. If storm water discharges threaten water quality, take immediate action. Comply with the requirements of 18 AAC 70 State of Alaska Water Quality Standards, AS 41.14.870 Protection of Fish and Game, Section 404 of the CWA, and all other applicable federal, state, and local statutes and regulations.

Coordinate with subcontractors and utility companies doing work in the project area so BMPs, and temporary and permanent stabilization are installed, maintained, and protected from damage.

3. Maintenance of BMPs.

Maintain temporary and permanent erosion and sediment control measures in effective operating condition. Remove sediment and debris from sediment traps, silt fences, and sediment ponds before sediment or debris accumulates to 50% of the BMP's design capacity.

Implement corrective actions as soon as possible, and before the next storm event whenever practicable. If implementation before the next storm event is impracticable, the situation must be documented in the SWPPP and alternative BMPs must be implemented as soon as possible.

4. Stabilization.

Stabilization may be accomplished using temporary or permanent measures. Initiate stabilization of disturbed soils, erodible stockpiles, disposal sites, and of erodible aggregate layers so that all of the following conditions are satisfied:

- a. As soon as practicable;
- b. As soon as necessary to avoid erosion, sedimentation, or the discharge of pollutants; and
- c. As identified in the SWPPP.

Land may be disturbed and stabilized multiple times during a project. Coordinate work to minimize the amount of disturbed soil at any one time. Do not disturb more soil than you can stabilize with the resources available.

Temporarily stabilize from wind and water erosion portions of disturbed soils, portions of stockpiles, and portions of disposal sites, that are not in active construction. Temporary stabilization measures may require a combination of measures including but not limited to vegetative cover, mulch, stabilizing emulsions, blankets, mats, soil binders, non-erodible cover, dust palliatives, or other approved methods.

SPECIAL PROVISIONS
CSP: Eklutna Lake Trailhead
Facility Improvements
Project No. 73302-2

Temporary or Permanent Seeding.

When temporary or permanent seeding is required, provide a working hydro seeding equipment located within 100 miles of the project by road; with 1,000 gallon or more tank capacity, paddle agitation of tank, and the capability to reach the seed areas with an uniform mixture of water, seed, mulch and tackifier. If the project is located in an isolated community the hydro-seeder must be located at the project.

Before applying temporary or permanent seeding, prepare the surface to be seeded to reduce erosion potential and to facilitate germination and growth of vegetative cover. Apply seed and maintain seeded areas. Reseed areas where growth of temporary vegetative cover is inadequate to stabilize disturbed ground.

Apply permanent seed according to Sections 618 and 724, within the time periods allowed by the CGP and the Contract, at locations where seeding is indicated on the plans and after land-disturbing activity is permanently ceased.

Stream By Pass.

When installing a culvert or other drainage structure where stream bypass is not used, install temporary or permanent stabilization concurrently or immediately after placing the culvert or drainage structure in a manner that complies with the SWPPP, applicable project permits and prevents discharge of pollutants.

Install temporary and permanent stabilization:

- a. At the culvert or drainage structure inlet and outlet; and
- b. In the areas upstream and downstream that may be disturbed by the process of installing the culvert, culvert end walls, culvert end sections, or drainage structure.

Before deactivating a stream bypass or stream diversion used for construction of a bridge, culvert, or drainage structure, install permanent stabilization:

- a. At the inlet and outlet of the culvert, drainage structure, or bridge;
- b. In the area upstream and downstream of the culvert, drainage structure, or bridge, that is disturbed during installation or construction of the culvert, drainage structure, or bridge; and
- c. Under the bridge.

641-3.04 FAILURE TO PERFORM WORK. The Project Engineer has authority to suspend work and withhold monies, for an incident that may endanger health or the environment. If the suspension is to protect workers, the public, or the environment from imminent harm, the Project Engineer may orally order the suspension of work. Following an oral order of suspension, the Project Engineer will promptly give written notice of suspension. In other circumstances, the Project Engineer will give the Contractor written notice of suspension before suspension of work. A notice of suspension will state the

defects or reasons for a suspension, the corrective actions required to stop suspension, and the time allowed to complete corrective actions.

1. If the Contractor fails to take the corrective action within the specified time, the Project Engineer may:
 - a. Suspend the work until corrective action is completed;
 - b. Withhold monies due the Contractor until corrective action is completed;
 - c. Assess damages or equitable adjustments against the Contract Amount; and
 - d. Employ others to perform the corrective action and deduct the cost from the Contract amount.
2. Reasons for the Project Engineer to take action under this section include, but are not limited to, the Contractor's failure to:
 - a. Obtain appropriate permits before Construction Activities occur;
 - b. Maintain effective BMPs to control erosion, sedimentation, and pollution in accordance with the ESCP and applicable local, state, and federal requirements;
 - c. Perform duties according to the requirements of this Section 641; or
 - d. Meet requirements of permits, laws, and regulations related to erosion, sediment, or pollution control.

No additional Contract time or additional compensation will be allowed due to delays caused by the Project Engineer's suspension of work under this subsection.

641-4.01 METHOD OF MEASUREMENT. Section 109.

641-5.01 BASIS OF PAYMENT. See Subsection 641-3.04 Failure to Perform Work, for additional work and payment requirements.

The total value of this Contract will be adjusted as specified herein. Withholding will be determined by the Department and assessed under Pay Item 641.0006.0000 ESCP Price Adjustment, as follows:

1. Fines and Penalties: A Price adjustment equal to any penalties and fines levied against the Department by local, state, or federal agencies for pollutant violations, including violations of the CWA, except when due to Department negligence. An amount equal to the anticipated penalties and fines for the violation or violations, excluding any due to negligence by the Department, will be withheld until the actual cost of the penalties and fines is known. Anticipated penalties and fines will be determined by the Project Engineer. The Contractor is also responsible for the payment of penalties and fines levied against the Contractor.
2. Failure to perform Corrective Action. By each 24-hour period following 24 hours after written notice by the Project Engineer, per occurrence, a price adjustment of \$750 will be assessed where the Contractor:

SPECIAL PROVISIONS
CSP: Eklutna Lake Trailhead
Facility Improvements
Project No. 73302-2

- fails to initiate corrective action to respond to a deficiency noted by the Project Engineer.

The same deficiency remaining uncorrected will be considered an additional occurrence for each additional 24-hour period, without requiring additional written notice by the Project Engineer.

Item 641.0001.0000 Erosion, Sediment and Pollution Control Administration. At the Contract lump sum price for administration of all work under this Section. Includes, but is not limited to, ESCP and HMCP and SPCC Plan preparation and agency fees.

Work required by the HMCP and SPCC Plan including hazardous material storage, containment, removal, cleanup and disposal, are subsidiary to Pay Item 641(1) Erosion, Sediment and Pollution Control Administration.

Item 641.0005.0000 Temporary Erosion Sediment and Pollution Control by Directive. At the contingent sum prices specified in the Directive using time and materials to authorize the work, for all labor, supervision, materials, equipment, and incidentals to install, maintain, remove and dispose of temporary erosion, sedimentation, and pollution control BMPs. Prices for this item will be by time and materials according to Subsection 109-1.05, or by mutual agreement between the Project Engineer and Contractor. All additional Erosion, Sediment, and Pollution Control Administration necessary due to this item will not be paid for separately but will be subsidiary to other bid items.

Item 641.0006.0000 ESCP Price Adjustment. Withholding according to Section 641-3.04, equal to any penalties and fines levied against the Department by local, state, or federal agencies for pollutant violations, including violations of the CWA and any other Permit, except when due to the Department's sole negligence. The Contractor is also responsible for the payment of any and all penalties and fines levied against the Department or Contractor by entities (including agencies) other than the Department.

The Department will not release performance bonds until penalties and fines, assessed according to Section 641, are paid to the Department; and all requirements, according to Subsection 103-1.05, are satisfied.

Subsidiary Items. Temporary erosion, sediment, and pollution control measures that are required outside the Project Area are subsidiary. Work required by the HMCP and SPCC Plan including hazardous material storage, containment, removal, cleanup and disposal, are subsidiary to Item 641.0001.0000 Erosion, Sediment and Pollution Control Administration.

Work under other pay items. Work that is paid for directly or indirectly under other pay items will not be measured and paid for under Section 641. This work includes but is not limited to:

- a. Dewatering;
- b. Shoring;

SPECIAL PROVISIONS
CSP: Eklutna Lake Trailhead
Facility Improvements
Project No. 73302-2

- c. Bailing;
- d. Permanent seeding;
- e. Installation and removal of temporary work pads;
- f. Temporary accesses;
- g. Temporary drainage pipes and structures;
- h. Diversion channels;
- i. Settling impoundment; and
- j. Filtration.

Permanent erosion, sediment and pollution control measures will be measured and paid for under other Contract items, when shown on the bid schedule.

Work at the Contractor's Expense. Temporary erosion, sediment, and pollution control measures that are required due to carelessness, negligence, or failure to install temporary or permanent controls as scheduled or ordered by the Project Engineer, or for the Contractor's convenience, are at the Contractor's expense.

Payment will be made under:

PAY ITEM		
Item Number	Item Description	Unit
641.0001.0000	Erosion, Sediment and Pollution Control Administration	LS
641.0005.0000	Temporary Erosion, Sediment and Pollution Control by Directive	CS
641.0006.0000	ESCP Price Adjustment	CS

(03/01/24) PARKS-Special Provision

SPECIAL PROVISIONS
 CSP: Eklutna Lake Trailhead
 Facility Improvements
 Project No. 73302-2

SECTION 642

CONSTRUCTION SURVEYING AND MONUMENTS

642-3.04 OFFICE ENGINEERING. Delete third sentence and replace with:

Perform the work by, or under the responsible charge of, a person registered in the State of Alaska as a Professional Land Surveyor or a Professional Engineer.

(05/01/07) E53-Standard Modification

642-4.01 METHOD OF MEASUREMENT. Add the following: Clearing required for stake visibility shall not be measured. Maintenance of stakes will not be measured.

(01/01/06) PARKS-Special Provision

642-5.01 BASIS OF PAYMENT. Add the following:

Clearing required for stake visibility is subsidiary to Item 642.0001.0000 and no separate payment shall be made.

(01/01/06) PARKS-Special Provision

Replace Section 643 with the following:

SECTION 643

TRAFFIC MAINTENANCE

643-1.01 DESCRIPTION. Protect and control traffic during the contract. Furnish, erect, maintain, replace, clean, move and remove the traffic control devices required to ensure the safety of the park users and general public. Perform all administrative responsibilities necessary to implement the work. The overflow parking area may be closed by the contractor.

643-1.02 DEFINITIONS.

Alaska Traffic Manual (ATM). The Manual on Uniform Traffic Control Devices (MUTCD) along with Alaska Supplement.

Traffic. The movement of the park users and general public through and around the project site. Traffic may consist of vehicles, pedestrians, and bicyclists.

Traffic Control Plan (TCP). A drawing or drawings indicating the method or scheme for safely guiding and protecting traffic and workers in a traffic control zone. The TCP depicts the traffic control devices and their placement and times of use.

Traffic Control Zone. A portion of the project that affects traffic and requires traffic control to safely guide and protect traffic and workers.

643-1.03 TRAFFIC CONTROL PLAN. Create and implement an approved TCP before beginning work within the project limits.

The TCP includes, but is not limited to, signs, barricades, traffic cones, plastic safety fence, and all other items required to direct traffic through or around the traffic control zone according to these Specifications and the ATM. Address in the TCPs placement of traffic control devices, including location, spacing, size, mounting height and type. Include code designation, size, and legend per the ATM and Alaska Sign Design Specifications (ASDS).

Submit new or modified TCPs to the Engineer for approval. Allow 1 week for the Engineer to review any TCP or each subsequent correction. You may change an approved TCP during construction provided you allow 48 hours for review and the Engineer approves the changes.

643-2.01 MATERIALS. Provide traffic control devices meeting the following requirements:

SPECIAL PROVISIONS
CSP: Eklutna Lake Trailhead
Facility Improvements
Project No. 73302-2

1. Signs. Use signs, including sign supports, that conform to Section 615, the ATM, and ASDS.
2. Barricades and Vertical Panels. Use barricades and vertical panel supports that conform to the ATM. Use Type III Barricades at least 8 feet long. Use reflective sheeting that meets AASHTO M 268 Type II or III.
3. Warning Lights. Use Type A (low intensity flashing), Type B (high intensity flashing) or Type C (steady beam) warning lights that conform to the ATM.
4. Drums. Use plastic drums that conform to the requirements of the ATM. Use reflective sheeting that meets AASHTO M 268 Type II or III.
5. Traffic Cones and Tubular Markers. Use reflectorized traffic cones and tubular markers that conform to the requirements of the ATM. Use traffic cones and tubular markers at least 28 inches high. Use reflective sheeting that meets AASHTO M 268 Type II or III.
6. Plastic Safety Fence. Use 4-foot-high construction orange fence manufactured by one of the following companies, or an approved equal:
 - a. "Safety Fence" by Jackson Safety, Inc., Manufacturing and Distribution Center, 5801 Safety Drive NE, Belmont, Michigan, 49306. Phone (800) 428-8185.
 - b. "Flexible Safety Fencing" by Carsonite Composites, LLC, 19845 U.S. Highway 76, Newberry, South Carolina, 29108. Phone (800) 648-7916.
 - c. "Reflective Fencing" by Plastic Safety Systems, Inc., 2444 Baldwin Road, Cleveland, Ohio 44104. Phone (800) 662-6338.

643-3.01 GENERAL CONSTRUCTION REQUIREMENTS. Keep the work, and portions of the project affected by the work, in good condition to accommodate traffic safely. Provide and maintain traffic control devices and services inside and outside the project limits, day and night, to guide traffic safely.

Immediately notify the Engineer of any traffic related accident that occurs within the project limits as soon as you, an employee, or a subcontractor becomes aware of the accident.

643-3.02 TRAFFIC CONTROL DEVICES. Before starting construction, erect permanent and temporary traffic control devices required by the approved TCPs. Use traffic control devices only when they are needed.

Use only one type of traffic control device in a continuous line of delineating devices.

Keep signs, drums, barricades, and other devices clean at all times. Immediately replace any devices provided under this Section that are lost, stolen, destroyed, inoperable or deemed unacceptable while used on the project.

Use only traffic control devices that meet the requirements of the "Acceptable" category

SPECIAL PROVISIONS
 CSP: Eklutna Lake Trailhead
 Facility Improvements
 Project No. 73302-2

in the American Traffic Safety Services Association (ATSSA) "Quality Guidelines for Temporary Traffic Control Devices".

643-3.03 AUTHORITY OF THE ENGINEER. When existing conditions adversely affect the public's safety or convenience, the Contractor will receive an oral notice. A written notice will follow the oral notice according to Subsection 105-1.01, Authority of the Engineer. The notice will state the defects, the corrective actions required, and the time required to complete such actions. If you fail to take corrective actions within the specified time, the Engineer will immediately close down the offending operations until you correct the defects. The Engineer may require outside forces to correct unsafe conditions. The cost of work by outside forces will be deducted from any monies due under the terms of this Contract.

643-4.01 METHOD OF MEASUREMENT. Item 643.0002.0000 Traffic Maintenance is a lump sum item and will not be measured directly for payment. The approved schedule of values and Engineer's approval shall constitute method of measurement.

643-5.01 BASIS OF PAYMENT. Item 643.0002.0000 Traffic Maintenance will be paid for at the contract lump sum price. Payment shall be full compensation for all the labor, equipment, material, and incidentals necessary to complete the work under this Section.

Payment will be made under:

PAY ITEM

Item Number	Item Description	Unit
643.0002.0000	Traffic Maintenance	LS

(06/18/13) PARKS-Special Provision

SPECIAL PROVISIONS
CSP: Eklutna Lake Trailhead
Facility Improvements
Project No. 73302-2

Add the following Section:

SECTION 647

EQUIPMENT RENTAL

647-1.01 DESCRIPTION. This item consists of furnishing construction equipment, operated, fueled, and maintained, on a rental basis for use in construction of extra or unanticipated work at the direction of the Engineer. Construction equipment is defined as that equipment actually used for performing the items of work specified and shall not include support equipment such as hand tools, power tools, electric power generators, welders, small air compressors and other shop equipment needed for maintenance of the construction equipment.

The work is to be accomplished under the direction of the Engineer, and the Contractor's operations shall at all times be in accordance with the Engineer's instructions. These instructions by the Engineer shall be to the Contractor's supervisory personnel only, not to the operators or laborers. In no case shall these instructions by the Engineer be construed as making the Department liable for the Contractor's responsibility to prosecute the work in the safest and most expeditious manner.

647-2.01 EQUIPMENT FURNISHED. In the performance of this work, furnish, operate, maintain, service, and repair equipment of the numbers, kinds, sizes, and capacities set forth on the Bid Schedule or as directed by the Engineer. The kinds, sizes, capacities, and other requirements set forth shall be understood to be minimum requirements. The number of pieces of equipment to be furnished and used shall be, as the Engineer considers necessary for economical and expeditious performance of the work. The equipment shall be used only at such times and places as the Engineer may direct.

Equipment shall be in first class working condition and capable of full output and production. The minimum ratings of various types of equipment shall be as manufactured and based on the manufacturer's specifications. Alterations will not be considered acceptable in achieving the minimum rating. Equipment shall be replaced when, in the opinion of the Engineer, their condition is below that normal for efficient output and production.

Equipment shall be fully operated, which shall be understood to include the operators, oilers, tenders, fuel, oil, air hose, lubrication, repairs, maintenance, insurance, and incidental items and expenses.

647-2.02 EQUIPMENT OPERATORS AND SUPERVISION PERSONNEL. Equipment operators shall be competent and experienced and shall be capable of operating the equipment to its capacity. Personnel furnished by the Contractor shall be, and shall remain during the work hereunder, employees solely of the Contractor.

The Contractor shall furnish, without direct compensation, a job superintendent or Contractor's representative together with such other personnel as are needed for Union,

SPECIAL PROVISIONS

CSP: Eklutna Lake Trailhead

Facility Improvements

Project No. 73302-2

State, or Federal requirements and in servicing, maintaining, repairing, and caring for the equipment, tools, supplies, and materials provided by the Contractor and involved in the performance of the work. Also, the Contractor shall furnish, without direct compensation, such transportation as may be appropriate for the personnel.

647-3.01 CONSTRUCTION REQUIREMENTS. The performance of the work shall be according to the instructions of the Engineer, and with recognized standards and efficient methods.

Furnish equipment, tools, labor, and materials in the kinds, number, and at times directed by the Engineer and shall begin, continue, and stop the several operations involved in the work only as directed by the Engineer.

Normally, the work is to be done when weather conditions are reasonably favorable, six (6) days per week, Mondays through Saturdays, except holidays.

The Engineer will begin recording time for payment each shift when the equipment begins work on the project. The serial number and brief description of each item of equipment listing in the bid schedule and the number of hours, or fractions thereof to the nearest one quarter hour, during which equipment is actively engaged in construction of the project shall be recorded by the Engineer. Each day's activity will be recorded on a separate sheet or sheets, which shall be verified and signed by the Contractor's representative at the end of each shift, and a copy will be provided to the Contractor's representative.

647-4.01 METHOD OF MEASUREMENT. The number of hours of equipment operation to be paid for shall be the actual number of hours each fully operated specified unit of equipment is actually engaged in the performance of work in the designated areas according to the direction of the Engineer. The pay time will not include idle periods, time used in oiling, servicing, or repairing of equipment, or in making changeovers of parts to the equipment. Travel time to or from the work site project will not be authorized for payment.

647-5.01 BASIS OF PAYMENT. Payment is for the time that fully operational equipment is engaged in the performance of the work directed by the Engineer. Time not paid for includes: idle periods, maintaining/servicing and repairing the equipment, making changeovers of equipment parts, and time to travel to and from the project. Payment will only be for time supported by certified payroll.

Furnishing and operating equipment that is heavier, has larger capacity, or greater power than specified will not entitle the Contractor to extra compensation. Payment will be made under:

PAY ITEM

Item Number	Item Description	Unit
647.0001.0000	Hydraulic Excavator, 1 CY, 100 Hp, Minimum	HOUR

(01/29/21) PARKS-Special Provision

SPECIAL PROVISIONS
CSP: Eklutna Lake Trailhead
Facility Improvements
Project No. 73302-2

SECTION 703

AGGREGATES

703-2.03 AGGREGATE FOR BASE.

Delete Table 703-2 and substitute the following:

TABLE 703-2
AGGREGATE FOR UNTREATED BASE
(Percent Passing by Weight)

Sieve Designation	Grading D-1
1 ½ inch	-
1 inch	100
¾ inch	70-100
⅜ inch	50-79
No. 4	35-58
No. 8	20-47
No. 30	10-26
No. 50	6-19
No. 200	0-6

Replace Subsection 703-2.04 with the following:

703-2.04 AGGREGATE FOR HOT MIX ASPHALT PAVEMENT. Process and crush aggregate that is free from clay balls, organic matter, other deleterious material, and not coated with dirt or other finely divided mineral matter. The aggregate used must consist of sound, tough, durable rock of uniform quality.

Remove all natural fines passing a No. 4 sieve before crushing aggregates for Type IV, V and R mixtures.

Coarse Aggregate. Aggregate retained on the No. 4 Sieve.

Meet the following requirements:

Description	Specification	Type IIA	Type I, IIB, III	Type IV	Type V, R
LA Wear, % max	AASHTO T 96	45	45	45	45
Degradation Value, Min	ATM 313	30	30	30	30
Sodium sulfate Loss % max (5 cycles)	AASHTO T 104	9	9	9	9

SPECIAL PROVISIONS
CSP: Eklutna Lake Trailhead
Facility Improvements
Project No. 73302-2

Fracture, min %	WAQTC FOP for AASHTO TP 61	90, 2 face	80, 1 face	90, 2 face	98, 2 face
Flat-Elongated Pieces, max %	ATM 306	8	8	8	8
1:5					
1:3		20	-	-	20
Absorption, max. %	AASHTO T 85	2.0	2.0	2.0	2.0

Fine Aggregate. Aggregate passing the No. 4 sieve.

Aggregate shall meet the quality requirements of AASHTO M 29, including S1.1, Sulfate Soundness.

Aggregate for Type IV, V, and R mixes:

- do not blend back natural sand
- shall be non-plastic as determined by WAQTC FOP for AASHTO T 90
- shall have a minimum uncompacted void content (Fine Aggregate Angularity) determined by AASHTO T 304, Method A, of 45%

TABLE 703-3
BROAD BAND GRADATIONS FOR HOT MIX ASPHALT PAVEMENT AGGREGATE
(Percent Passing by Weight)

Sieve	Gradation					
	Type I	Type II	Type III	Type IV	Type V	Type R
1 inch	100	-	-	-	-	-
3/4 inch	80-90	100	-	-	100	100
1/2 inch	60-84	75-90	100	100	65-90	70-100
3/8 inch	48-78	60-84	80-90	80-95	55-80	50-70
No. 4	28-63	33-70	44-81	55-70	40-60	30-42
No. 8	14-55	19-56	26-70	35-50	≤ 45	20-32
No. 16	9-44	10-44	16-59	20-40	≤ 35	15-25
No. 30	6-34	7-34	9-49	15-30	≤ 25	10-20
No. 50	5-24	5-24	6-36	10-24	≤ 20	7-15
No. 100	4-16	4-16	4-22	5-15	≤ 12	5-12
No. 200	3-8	3-8	3-8	4-8	3-8	4-10

Note:

1. No tolerance is allowed beyond the Broad Band Limits of the No. 200 Sieve.
2. For Type R, the mix design gradation JMD shall provide a minimum of 8% difference of percent passing the No. 4 and the No. 8 sieve.

(10/11/10) CR7031-Special Provision

SPECIAL PROVISIONS
CSP: Eklutna Lake Trailhead
Facility Improvements
Project No. 73302-2

Replace Section 724 with the following:

SECTION 724

SEED

724-2.01 DESCRIPTION. Grass seed to provide a living vegetative cover.

724-2.02 MATERIALS. Provide seed mix as specified in the Special Provisions. Provide seed collected or harvested within 2 years of the targeted seeding date. Provide all seed in pure live seed (PLS) unless otherwise directed.

Furnish seed true of genus and species. Meet applicable requirements of the State of Alaska *Seed Regulations*, Alaska Administrative Code, Title 11, Chapter 34, (11 AAC 34), and the Federal Seed Act, 7 CFR Part 201.

The Engineer will review requests for genus, species, or cultivar substitutions(s). The Contractor shall submit a proposed seed mix accompanied by approval from the Alaska Plant Materials Center, and confirmation the vendor can provide the requested mix in quantities adequate for the project.

1. Prohibited and Restricted Noxious Weeds and Quarantined Pests. Furnish seed certified to be free of prohibited noxious weeds or quarantined pests, and certified to contain no more than the maximum allowable tolerances for restricted noxious weeds, according to 11 ACC 34.
 - a. Seed found to contain prohibited noxious weeds or quarantined pests will be rejected, according to 11 AAC 34.020(a) and 11 AAC 34.105 through 34.180, respectively.
 - b. Seed found to contain restricted noxious weed seed in excess of the maximum allowable tolerance per pound will be rejected, according to 11 AAC 34.020(b).

Prohibited and restricted noxious weeds are listed in 11 AAC 34.020, and can be viewed at the following URL: <http://plants.alaska.gov/invasives/noxious-weeds.htm>.

2. Labeling. Ensure each bag or container of individual seed species is labeled to meet requirements of 11 AAC 34.010. Do not remove labels from bags or containers.
3. Certification. Certify seed is free of prohibited noxious weeds and restricted noxious weeds are within allowable tolerances. Furnish to the Engineer a statement signed by the vendor identifying the lot number or lot numbers, certifying each lot of seed has been tested within the preceding nine months, by a recognized seed testing laboratory, a member of the Association of Official Seed Certifying Agency (AOSCA), or the Alaska Plant Materials Center.

SPECIAL PROVISIONS
CSP: Eklutna Lake Trailhead
Facility Improvements
Project No. 73302-2

Seed will be rejected if:

- a. Contains prohibited noxious weeds;
- b. Contains restricted noxious weeds above maximum allowable tolerances;
- c. Not certified as tested within the preceding nine months;
- d. Wet, moldy, or otherwise damaged in transit or storage; or
- e. Containers do not have labels or the labels have been removed.

Seed may be rejected for:

- a. Discrepancies in the lot numbers listed on the statement to the lot numbers indicated on the labels of the seed containers.

The Contractor shall immediately remove rejected seed from the project premises. If seed is rejected for containing prohibited noxious weeds or for exceeding maximum allowable tolerances of restricted noxious weeds, dispose of rejected seed according to 11 AAC 34.075(g).

(11/30/20) CR724-Special Provision

SECTION 726

TOPSOIL

726-2.01 TOPSOIL. Replace Item No. 1 with the following:

Reasonably free from roots, clods, hard clay, tall grass, brush, sticks, stubble or other litter, and be free-draining and non-toxic. Must be free of noxious weeds or invasive material.

APPENDIX A

PERMITS

PERMIT DESCRIPTION	ISSUE DATE	EXPIRE DATE
Alaska Office of History and Archeology A.S. 41.35.070 Historic Properties Review	1/4/2023	NA
DEC Recommendations for General Project Activities near a PWS source	NA	NA

SPECIAL PROVISIONS
 CSP: Eklutna Lake Trailhead
 Facility Improvements
 Project No. 73302-2

From: [Johnson, McKenzie S \(DNR\)](#)
To: [Fehrmann, Chester W \(DNR\)](#)
Subject: RE: Eklutna Lake Trailhead Improvements Project
Date: Wednesday, January 4, 2023 1:26:14 PM

File No.: 3130-2R DPOR/2022-01321

The Office of History and Archaeology (OHA) received the request to review the subject project on December 9, 2022 for conflicts with cultural resources pursuant to Section 41.35.070 of the Alaska Historic Preservation Act.

Upon review of the information provided we offer the following comments:

Review of the Alaska Heritage Resources Survey (AHRS) database indicated there are no *known* cultural resource sites/historic properties in the area of the proposed project. Based on the lack of reported sites, the level of prior disturbance, and the nature of the undertaking we do not believe the project will affect historic cultural resources/historic properties.

However, please keep in mind that only a very small portion of the state has been surveyed for cultural resources and therefore the possibility remains that previously unidentified resources may be located within the project area. As such, should inadvertent discoveries of cultural resources occur, our office should be notified so that we may evaluate whether the resources should be preserved in the public interest (as specified at Section 41.35.070[d]). Any information provided helps the State better manage Alaska's heritage resources.

Examples of cultural resource sites that could be encountered include (but are not limited to): historical cabin remains (collapsed, standing, or foundations); adits; dredges or other mining equipment; cultural depressions or pits; graves or cemeteries; prehistoric tools or artifacts; and paleontological (fossilized) remains

Thank you for the opportunity to comment. Please let me know if we can be of further assistance.

Mckenzie S. Johnson

Archaeologist I

Alaska State Historic Preservation Office/Office of History and Archaeology

550 W. 7th Ave, Suite 1310

Anchorage, AK 99501

Phone: 907-269-8726

E-mail: mckenzie.johnson@alaska.gov

From: Meitl, Sarah J (DNR) <sarah.meitl@alaska.gov>
Sent: Friday, December 9, 2022 9:44 AM
To: Fehrmann, Chester W (DNR) <chester.fehrmann@alaska.gov>
Cc: Johnson, McKenzie S (DNR) <mckenzie.johnson@alaska.gov>
Subject: FW: Eklutna Lake Trailhead Improvements Project

Hi Chet,

Documentation received and logged in with Mckenzie under 2022-01321.

Best,
Sarah

Sarah Meitl

Review and Compliance Coordinator
Alaska State Historic Preservation Office
Office of History and Archaeology
907-269-8720

From: Fehrmann, Chester W (DNR) <chester.fehrmann@alaska.gov>

Sent: Tuesday, December 6, 2022 7:39 AM

To: Meitl, Sarah J (DNR) <sarah.meitl@alaska.gov>

Subject: Eklutna Lake Trailhead Improvements Project

Sarah,

ADNR-DPOR D&C is proposing to pave the existing ATV/overflow parking lot at Eklutna Lake. As part of the grant application, I need to provide OHA correspondence regarding this project. I have attached the site plan for reference, and the APE would extend about 5 feet beyond the paving polygon.

Items I need to address on the form:

- Are there any cultural resources or historic properties (prehistoric, historic, or Tribal district, site, buildings, structures, or objects included in, or eligible for inclusion in, the NHRP) present within the APE?
- Does the proposed project have “No Potential to Cause Effects”, as described in 36 CFR 800.3(a)(1)? (I believe this question can only be asked by the federal agency and can’t be asked by the applicant...)
- Are there any National Register listed or eligible sites in the project area?
- Will the project impact any listed or eligible sites?

Let me know if you have any questions.

Thank you!

Chet Fehrmann

Environmental Impact Analyst
Alaska State Parks, Design & Construction
907.269.8506

From: [Palmer, Charley \(DEC\)](#)
To: [Fehrmann, Chester W \(DNR\)](#)
Cc: [Miller, Christopher C \(DEC\)](#)
Subject: FW: Chugach State Park: Eklutna Lake Trailhead Improvements Project
Date: Thursday, December 15, 2022 7:05:42 AM
Attachments: [EklutnaParking_LocationAndVicinity_Map2.pdf](#)
[Site Plan - Eklutna Trailhead Improvements 2022-11-16.pdf](#)
[DEC_PWS_Map.JPG](#)
[dec-eh-dw-recommendations-for-general-project-activities-near-a-pws-source.pdf](#)

Hi Chet,

Chris forwarded me your request and asked if I could respond.

Thank you for the opportunity to comment with respect to public water system (PWS) sources. Given the location(s) provided, this project is near an active registered PWS source (see attached "DEC_PWS_Map.jpg" and summary table below). For this reason, we ask that the applicant please adhere to the attached **Recommendations for General Project Activities near a PWS source**, where applicable.

To access our interactive web map, which displays PWS source locations and Drinking Water Protection Areas, please visit: <https://www.arcgis.com/home/item.html?id=13ed2116e4094f9994775af9a62a1e85>.

Summary table

Public Water System ID (PWSID): AK2210906

Water System Name: MOA MUNICIPALITY OF ANCHORAGE

Water System Classification: Community Water System

State Assigned Source ID: IN-EKLUTNA

Source Name: EKLUTNA LAKE INTAKE

Source Water Type: Surface Water

Source Facility Type: Intake

[Drinking Water Watch](#) has current sampling results and contact information.

[Alaska DEC Drinking Water](#) Program home page.

Drinking Water Regulations: [18 AAC 80](#).

Regards,

--

Charley Palmer, *Hydrologist 3*

Alaska DEC

Division of Environmental Health

[Drinking Water Program](#)

Drinking Water Source Protection

From: Fehrmann, Chester W (DNR) <chester.fehrmann@alaska.gov>

Sent: Wednesday, December 14, 2022 11:04 AM

To: Miller, Christopher C (DEC) <chris.miller@alaska.gov>

Subject: Chugach State Park: Eklutna Lake Trailhead Improvements Project

Chris,

Alaska State Parks is proposing to pave the existing overflow (and motorized user) parking area near the Eklutna Lake Campground Facility. A review of the DWPA website indicated that this project is located in Zone B of Eklutna Lake.

Are there any concerns with this project regarding the DWPA? If so, are there any mitigation measures that would need to be implemented?

I have attached a copy of the site plan for this project. Please let me know if you have any questions.

Thank you!

Chet Fehrmann

Environmental Impact Analyst

Alaska State Parks, Design & Construction

907.269.8506



July 14, 2022

Recommendations for general project activities associated with, or near, a public water system source

The following recommendations are intended to address potential impacts of projects, to be permitted or otherwise, in which planned activities are associated with, or near, a public water system (PWS) source (e.g., water well, spring, surface water intake, etc.). The key aspects of these recommendations are to identify nearby PWS sources, establish appropriate points of contact for the applicant and PWS, and implement best management practices.

Authority:

18 AAC 80.015. Well protection, source water protection, and well decommissioning.

- a) A person may not
 - (1) cause pollution or contamination to enter a public water system; or
 - (2) create or maintain a condition that has a significant potential to cause or allow the pollution or contamination of a public water system.

Recommendations:

- 1) Identify on a legible map if any part of the project is within a Drinking Water Protection Area (DWPA) for a PWS source. DWPAs can be found using the interactive web map application, “**Alaska DEC Drinking Water Protection Areas**”, located at <https://dec.alaska.gov/das/GIS/apps.htm>. Links to basic instructions for using this web map can be found on the map description page. If you experience problems accessing the map, please contact the Drinking Water Source Protection group at (907) 269-7549, or chris.miller@alaska.gov.
- 2) Where the project/permit intersects a DWPA, notify the associated PWS contact and provide the following:
 - a) A brief description of the project location and associated activities; and
 - b) Project contact information.

PWS contact information can be obtained using the hyperlink from within the pop-up information for each PWS source in the web map, or directly by using the online application called “Drinking Water Watch”, found at <https://dec.alaska.gov/DWW/>.

- 3) Within the identified DWPA, control stormwater and wastewater discharge such that it is directed away from the PWS.

Recommendations for general project activities associated with, or near, a public water system source (continued)

- 4) Within the identified DWPA, restrict project/permit activities that could significantly and/or permanently change the natural surface water or groundwater levels of the water sources immediately contributing to the PWS.
- 5) Within the identified DWPA, implement voluntary best management practices suited to your project where equipment storage, maintenance and operation, or other potential sources of contamination are located to minimize the potential for PWS source contamination.
- 6) Restrict or limit equipment storage, maintenance and operation, and other potential sources of contamination, within the following high-priority DWPA Zones:
 - a) Zone A DWPA (several-months-time-of-travel for contributing groundwater, or 1,000-foot buffer of the contributing surface water body and its immediate tributaries);
 - b) Zone E DWPA (1,000-foot buffer of the contributing surface water body and its immediate tributaries for a source using groundwater under the direct influence of surface water (GWUDISW)); or
 - c) Provisional DWPA (1,000-foot radius around a PWS source).
- 7) All non-proprietary data related to the project/permit, including but not limited to, water quality results (field and lab), survey data, water levels, subsurface lithologic descriptions and depth, and groundwater flow direction and gradient information, should be made available to the permitting agency upon request.
 - a) When associated with the development, construction, modification, or operation of a PWS, follow the requirements in DEC Drinking Water regulations 18 AAC 80, <https://dec.alaska.gov/eh/dw/regulations/>.
- 8) Keep a list of PWS contacts and agency spill reporting contacts readily available.
 - a) Immediately notify contacts of any potential contamination event, such as spills or excess erosion.

Sincerely,

Charley Palmer, *Hydrologist 3*
DEC Drinking Water Source Protection
E-mail: charley.palmer@alaska.gov
Phone: (907) 269-0292

Alternate contacts:

Chris Miller, Environmental Program Specialist 4, chris.miller@alaska.gov
Kenna Billups, Environmental Program Specialist 2, kenna.billups@alaska.gov

APPENDIX B

SURVEY REQUIREMENTS

1. Alaska Construction Surveying Requirements (US Customary Units)



**Alaska
Department of
Transportation
and
Public Facilities**

**Alaska
Construction
Surveying
Requirements (US
Customary Units)**

Alaska Construction Surveying Requirements (US Customary Units)

Table of Contents

Description	Page
1. Survey accuracy requirements	1
2. Survey frequency requirements	2
3. Typical section drawing	3
4. Survey point materials requirements	4
5. Typical alignment notes	5
6. Typical clearing notes	6
7. Typical level notes	7
8. Typical slope stake notes	8
9. Typical culvert notes	9
10. Typical culvert camber diagram	10
11. Typical blue or red tops and grade stake notes	11

1. Survey accuracy requirements

Third order survey

- ✓ Use a 1/5000 horizontal closure.
- ✓ Use an angle closure of $30\sqrt{N}$ seconds, where N equals the number of angles in the traverse.
- ✓ An Alaska-registered professional land surveyor must perform or supervise replacement of survey monuments (property, USGS, USC&GS, BLM, etc.) or establishment of monuments (including centerline).
- ✓ All monument work must comply with AS 34.65.040 and meet standards in the latest version of the Alaska Society of Professional Land Surveyors' *Standards of Practice Manual*.
- ✓ The allowable vertical error for misclosure is $e = 0.05\sqrt{M}$ e = maximum misclosure in feet, M = length of the level circuit in miles.

Table 1—Survey accuracy requirements (in feet)

	Stationing	HI	Closure	Horizontal Angle	Distance To center line	Grade
Additional cross sections	1.0	0.01	0.04	**	0.1	0.1
Benches		0.01	0.02			
Blue tops***	1.0	0.01	0.04		0.1	0.02
Bridges	*	0.01	0.02			0.01
Centerline	*			*		
Clearing & Grubbing	1.0				1.0	
Culverts	1.0	0.01	0.04	**	0.1	0.1
Curb & gutter	1.0	0.01	0.02		0.1	0.02
Grade stakes	1.0				0.1	0.1
Guardrail	1.0				0.1	
Manholes, catch basins & inlets	1.0	0.01	0.02		0.1	0.02
Monuments	*			*		
Red tops***	1.0	0.01	0.02		0.1	0.05
Riprap	1.0	0.1	0.04		1.0	0.1
Signs	1.0				0.1	
Slope stakes & RP's	1.0	0.01	0.04	**	0.1	0.1
Under drains & sewer	1.0	0.01	0.02		0.1	0.02

* Third order survey

**Right angle prism or transit angles from center line

*** Use blue tops for top of base course and red tops for the bottom of base course.

1. Survey frequency requirements

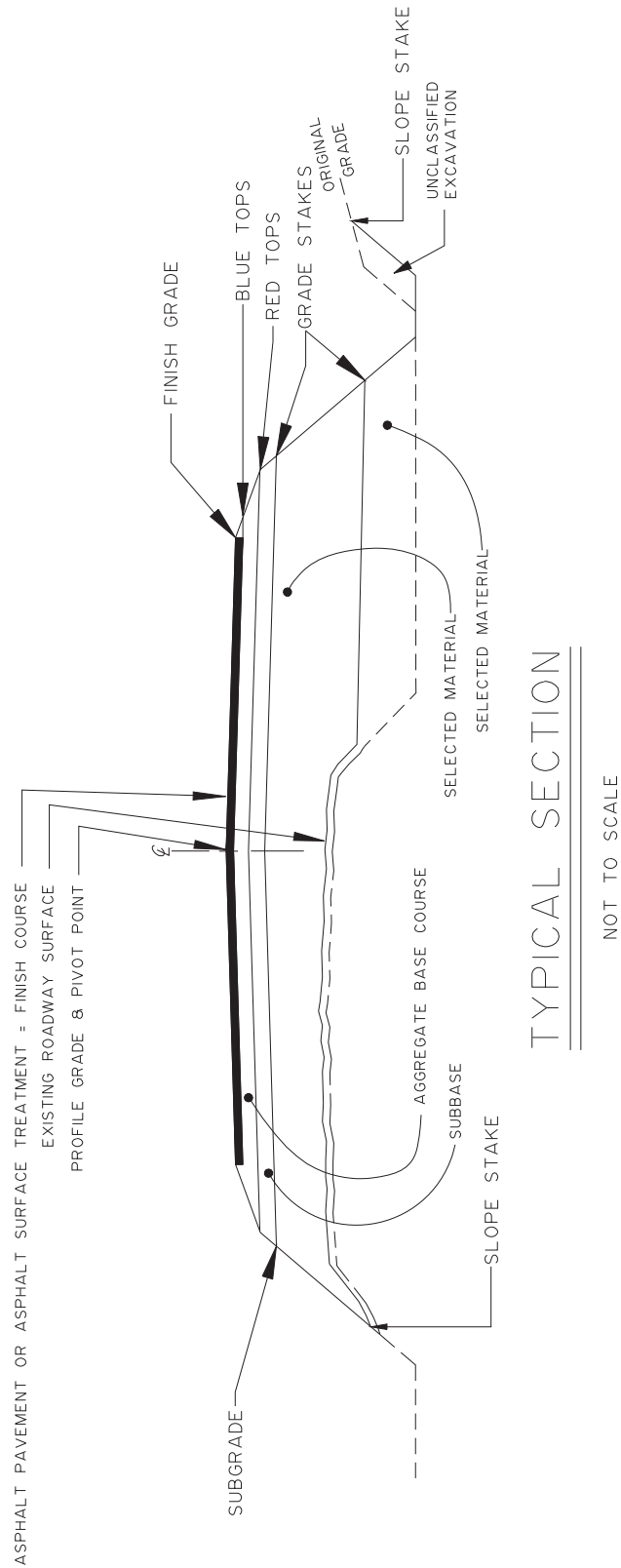
Table 2—Survey frequency requirements (in feet)

	Tangents	Curves	Interchange ramps	Stake each per plan	See special instructions on sample notes
Additional cross sections	*	*	*		
Bench marks					X
Blue tops	100	100**	25		X
Blue tops within 100 feet both sides of railroad track crossings and bridge approaches	25	25	25		X
Bridges				X	X
Center line	100	100**	25		
Clearing	100	100**	25		X
Culverts				X	X
Curb and gutter	25	25	25		
Grade stakes	100	100**	50		
Guardrail	25	25	25		
Manholes, catch basins & inlets				X	
Monuments				X	
Red tops	100	100**	25		X
Riprap	50	50	50		
Signs				X	
Slope stake / cross sections	100	100**	25		X
Under drains and sewers	50	25	25		

* Establish additional cross sections and slope stakes at all breaks in topography and where structures begin and end.

**Curves shall be staked on 50-foot stations if the curve is greater than six degrees.

2. Typical Section Drawing



3. Survey point materials requirements

- ✓ These are minimum requirements; larger sizes may be necessary.
- ✓ Use only stakes with planed sides.

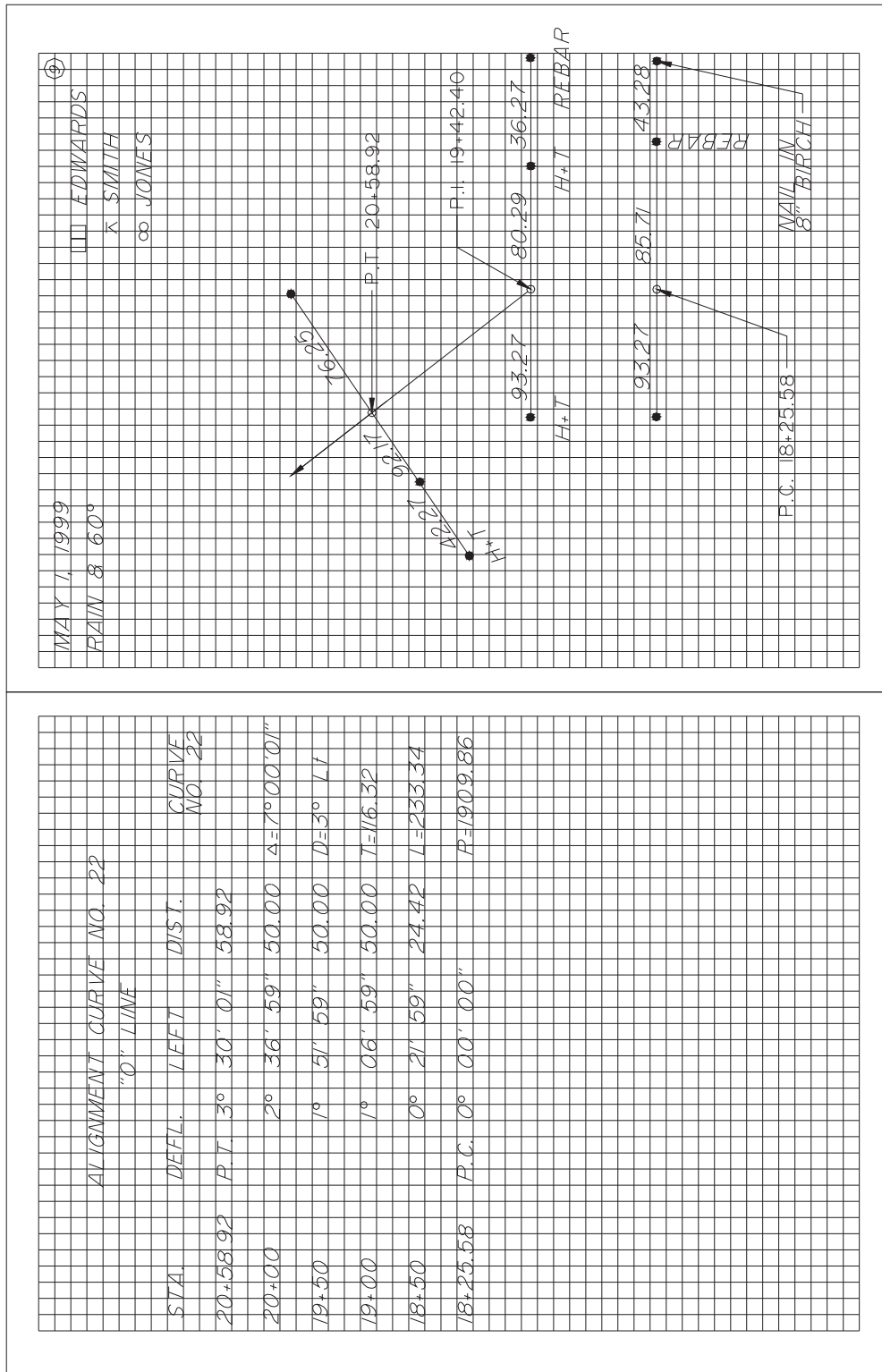
Table 3—Survey point materials requirements

	24" lath or whiskers	2" x 2" x 8" hub	2" x 2" x 12" hub	1" x 2" x 18" stake	1" x 2" x 24" stake	48" lath	Hub and tack	40d nail	60d nail	1/2" x 24" rebar
Benchmarks									X	
Blue tops	X	X								
Centerline P.C., P.T., P.O.T.			X	X			X *			X *
Centerline reference points			X	X			X *			X *
Centerline station				X				X		
Clearing						X				
Culvert stake			X		X	X				
Culvert stake references			X		X	X				
Curb and gutter			X		X		X			
Guardrail								X		
Major structures			X	X *	X *	X	X *			X *
Red tops	X	X								
Signs						X				
Slope stake					X	X				
Slope stake references			X		X	X				

* Optional depending on conditions, and to be determined by the Project Engineer.

4. Typical alignment notes

- ✓ The Chief of Parties must prepare the alignment book before actual staking.
- ✓ Don't use swing ties for reference points.
- ✓ Use three point right angle ties, two to the right and one left, or vice versa.
- ✓ Reference P.C., P.I., P.T., and P.O.T.



5. Typical clearing notes

- ✓ Exclude areas not needing clearing.
- ✓ Draw a diagram as required to show unusual or confusing areas.

	— CLEARING & GRUBBING —				AUG. 6, 1999				Ⓢ EDWARDS ∞ SMITH ∞ JONES	Ⓢ
STA.	CL.I.T.	CATCH			CATCH			CL.R.T.		
5+50	149'	+12' 137'			203'	+12'	215'			
6+00	164'	152'			188'		200'			
6+50	159'	147'			204'		216'			
7+00	167'	155'			180'		192'			
7+50	179'	167'			188'		200'			

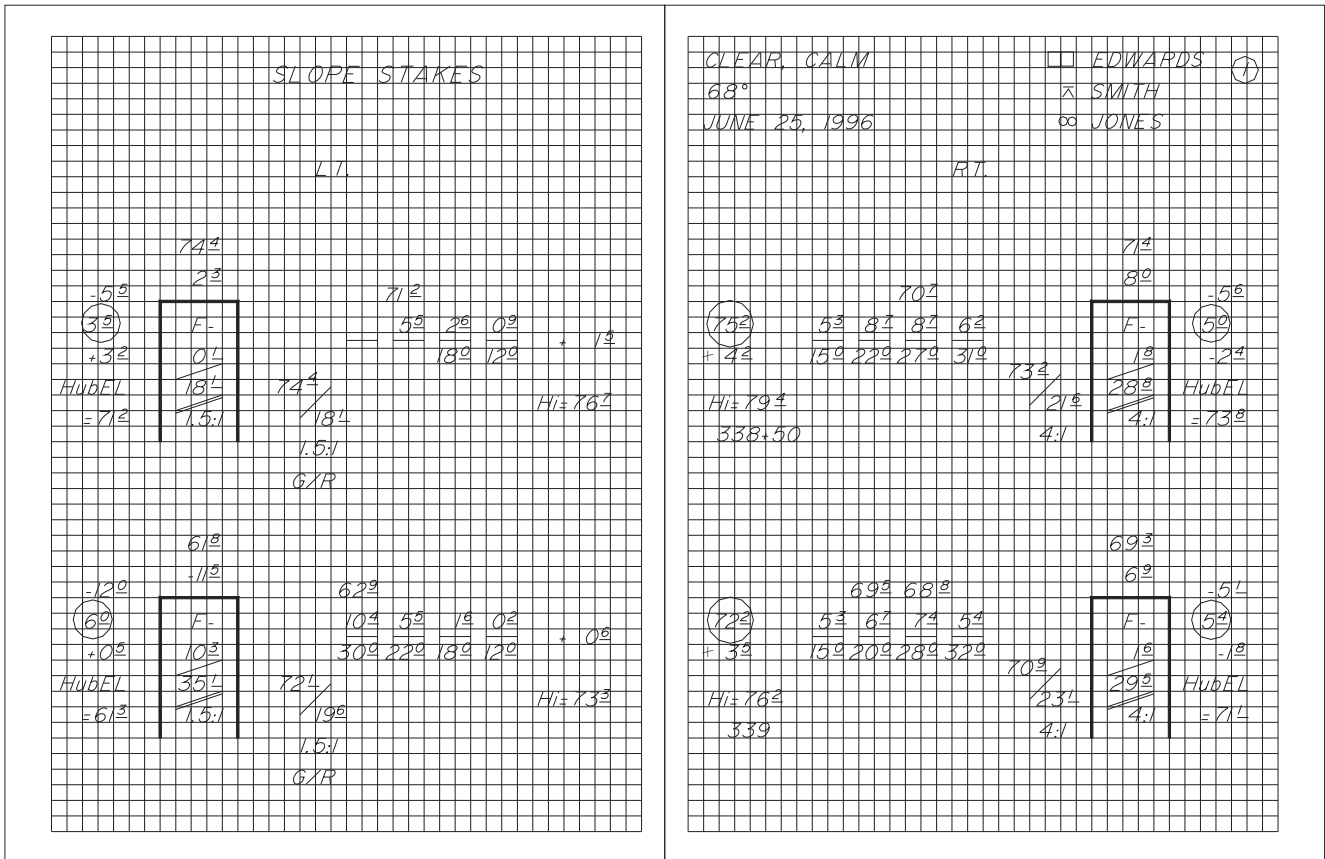
6. Typical level notes

- ✓ Balance back sights and foresights.
- ✓ Establish all benchmarks and take the centerline profile before doing any staking involving elevations.
- ✓ Don't set benchmarks in utility poles.
- ✓ Don't use side shots on benchmarks.
- ✓ Use the turn through method when establishing benchmarks.
- ✓ Re-check benchmarks after each major freeze/thaw cycle and/or any environmental event that may change the benchmark elevation.
- ✓ Do not use double rodding.
- ✓ Run separate level loops between all benchmarks.
- ✓ Set benchmarks in trees of at least six-inch diameter, unless approved by the Project Engineer.
- ✓ Correct errors in benchmark elevations so they will not affect the elevations of succeeding benchmarks.
- ✓ Consult with the Project Engineer before placing benchmarks in areas of permafrost or other unstable ground.
- ✓ Establish benchmarks at intervals and locations consistent with good engineering practice, and generally not more than 1000 feet.
- ✓ Completely describe benchmarks when establishing or re-establishing their elevation. Give centerline stationing, offset, benchmark projection, and observable benchmark characteristics. When checking into or out of benchmarks, note the book and page number that contains the most recent elevation establishment for that benchmark.
- ✓ Write the station on the top twelve inches facing centerline, with numerals a minimum of one inch in height.

STA.	BS+	HI	FS-	ELEV.	45°± CLEAR WARM CALM			⊗ □	EDWARDS
					WILD 413579	3-23-90		+	SMITH
TBM #101 6+72				161.309	Nail in base of 12" Spruce 85' 10" LT.				6+72
	3.877	165.186							
6+00			1.95	163.24					
6+25			2.32	162.87					
6+50			2.96	162.23					
T.P.			3.246	161.940					
	1.103	163.043							
6+75			2.31	160.73					
7+00			2.56	160.48					
T.P.			2.823	160.220					
	2.332	162.552							
					Nail in base of 18" stump				
TBM #102			1.143	161.409	60' 4" RT	7+21	Elev.		161.413

7. Typical slope stake notes

- ✓ Enter the station, elevations, shoulder distance or ditch distances, and slope in the slope stake book before staking begins.
- ✓ In areas where slides or overbreak are anticipated, extend the sections beyond the construction limits.
- ✓ Slope-stake each section that is cross-sectioned.
- ✓ Final re-cross sections are required where there are overbreaks, undercuts, etc. Re-cross section book and page numbers shall be noted on the original cross-section and slope staking page for the relevant stations.
- ✓ Include at least the following information on the stake: (1) where to begin the cut or fill (2) the slope ratio (3) the depth of cut or height of fill and (4) the station.
- ✓ Use a hand level only for one turn up or down from the instrument.
- ✓ Clearly note hand level turns.
- ✓ Use a reference point that is 10-20 feet beyond the slope stake.
- ✓ The reference point must show the cut or fill to the slope stake and must include the slope stake information.
- ✓ Slope stake all abrupt changes in typical sections.
- ✓ Position all laths to face centerline.

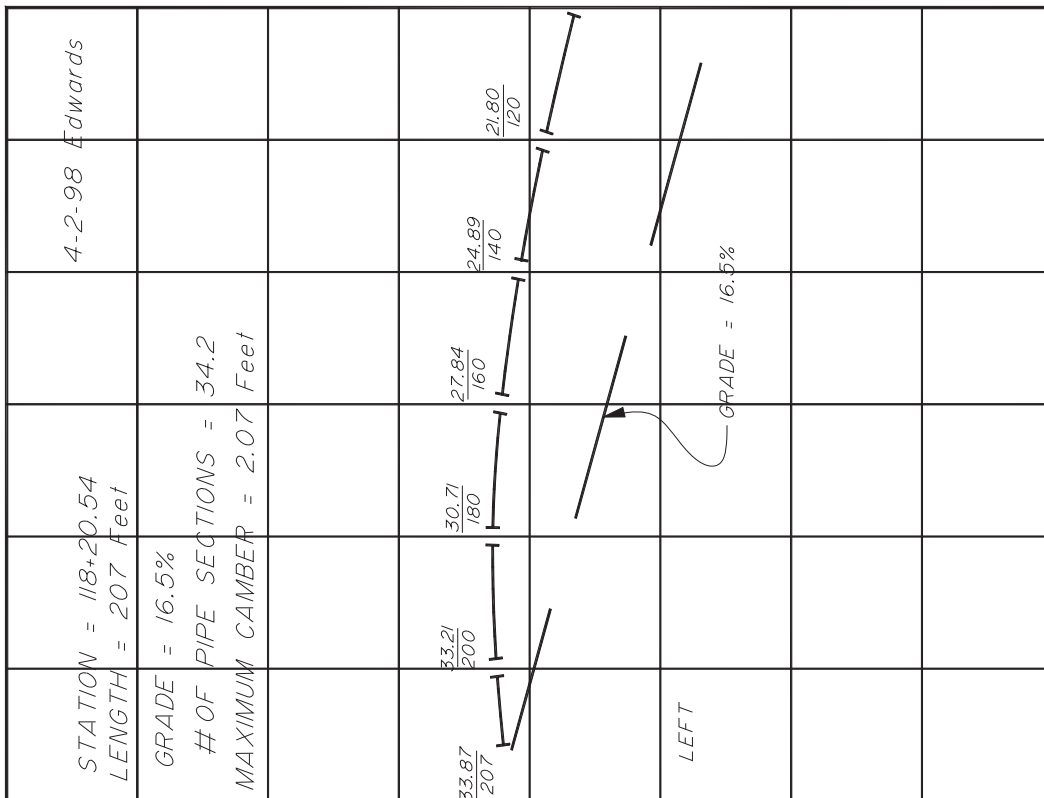
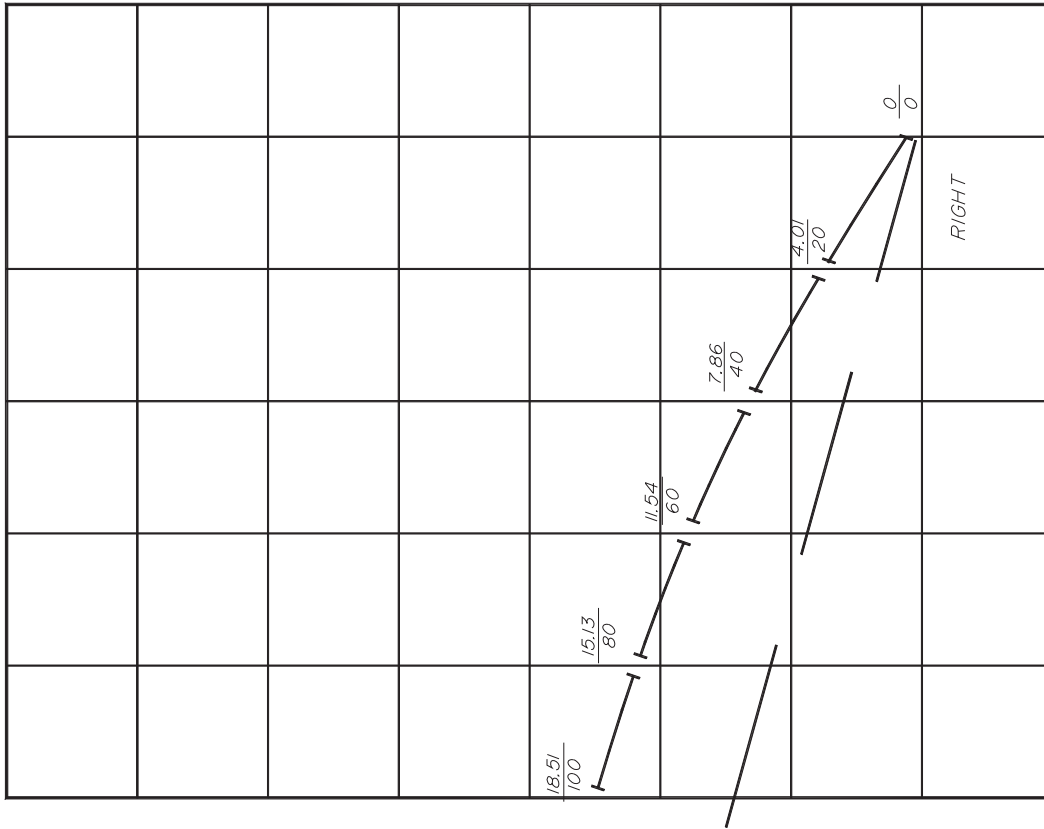


8. Typical culvert notes

- ✓ Show at least the following information on culvert stakes
 - station
 - size
 - length
 - type of pipe (e.g., 24" x 80' CMP)
 - cut or fill from top of hub to inlet & outlet
 - skew angle
 - horizontal distance from hub to end of pipe
 - gradient of pipe
 - drop of pipe
- ✓ Ensure that all culverts have a minimum camber equal to 1% of the length of the pipe, unless the Project Engineer directs otherwise.
- ✓ Develop a culvert camber diagram showing each section of pipe and its elevation and offset.

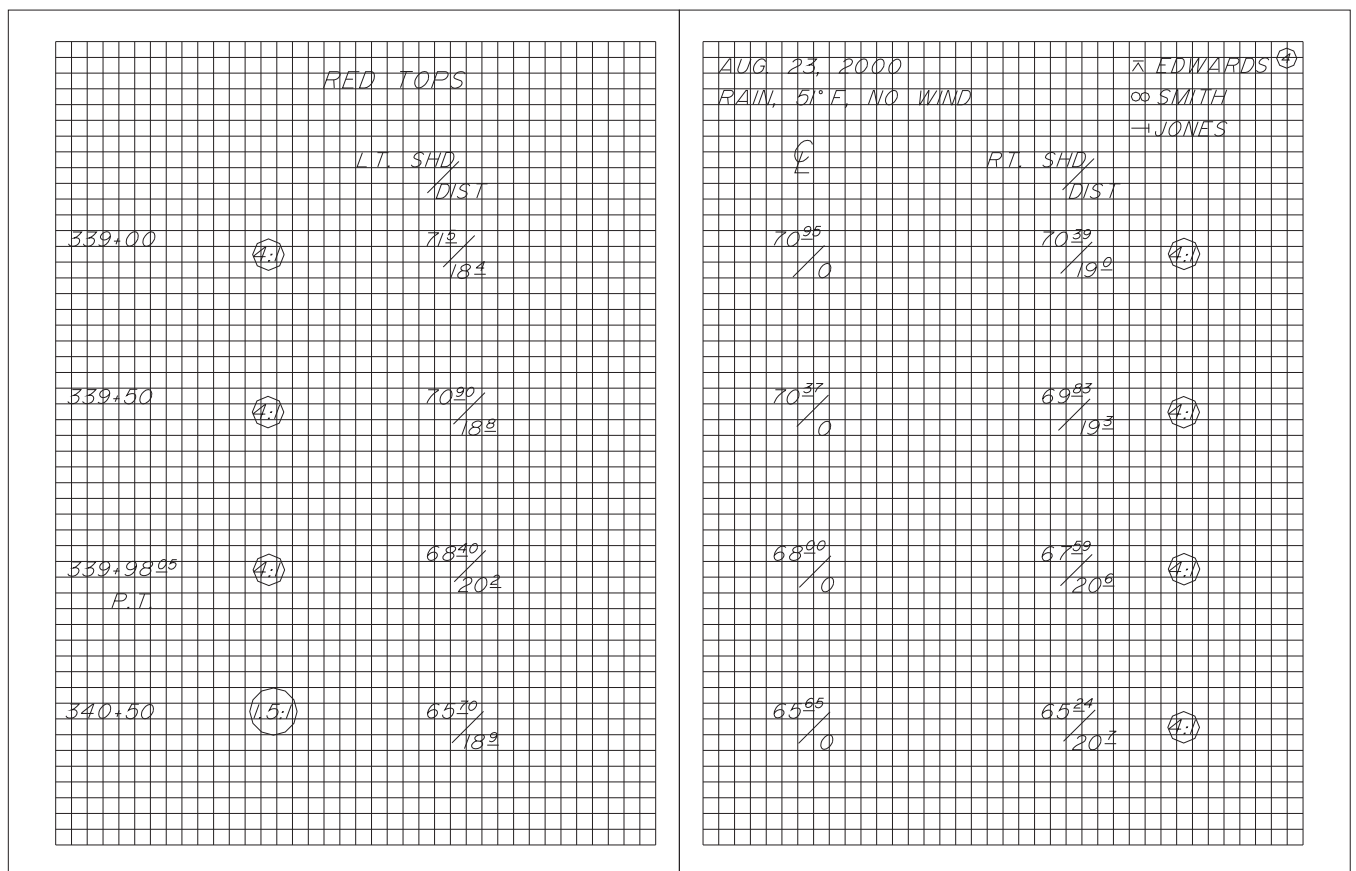
STA.	+	-	CMP STAKING	ELEV.	52%± OVERCAST L.T. BREEZE	Diagram	Notes
T.B.M. No. 101	871	Hi	IRS	5361	5-25-90		EDWARDS SMITH
① Hub LATH	6232	Z	164 1079	607 C-91 515 F-01		⑦2 Hub OUTLET INVERT=489	
② Hub LATH CMP TRAY (EXISTING)			1392 1270 1345	484 F-09 496 C-07 489 C-09	343	344+27 24"X60" 5-4.5% 345	
						① Hub INLET INVERT=516	
						L=24 L=5-12 0	

9. Typical culvert camber diagram



10. Typical blue or red tops and grade stake notes

- ✓ Place blue and red tops at each break in typical section and on centerline.
- ✓ Use blue tops for top of base course.
- ✓ Use red tops for the bottom of the base course.
- ✓ Evenly space red/blue tops at and between crown section break points with a maximum spacing of 25 feet between red/blue tops.
- ✓ Establish horizontal control from centerline references and vertical control from benchmarks.
- ✓ Place blue tops at the same interval as slope stakes.
- ✓ Stake all curve transitions.



APPENDIX C EROSION AND SEDIMENT CONTROL PLAN (ESCP)

The Alaska Department of Natural Resources (ADNR) Division of Parks and Outdoor Recreation (DPOR) Design and Construction Section (D&C) has created this Erosion and Sediment Control Plan (ESCP). This ESCP shall be amended by the Contractor to incorporate the projects material source sites, HMCP, SPCC, and any other modification the contractor determines is necessary.

The Contractor shall use the attached ESCP to meet Alaska Department of Environmental Conservation requirements for construction.

SITE DESCRIPTION:

1. SITE FUNCTION: OVERFLOW LOT FOR RECREATIONAL USERS
 2. THIS PROJECT INCLUDES THE PAVING OF THE LOWER LOT, DITCH CONSTRUCTION, AND THE INSTALLATION OF AN ORIENTATION KIOSK.
 3. PROJECT AREA: 0.95 ACRES
 4. PROJECT DISTURBED AREA: 0.87 ACRES
 5. PERCENT IMPERVIOUS AREA BEFORE CONSTRUCTION: 88%
 6. RUNOFF COEFFICIENT BEFORE CONSTRUCTION: 0.52
 7. PERCENT IMPERVIOUS AREA AFTER CONSTRUCTION: 98%
 8. RUNOFF COEFFICIENT AFTER CONSTRUCTION: 0.77
- EXISTING SOILS CONSIST OF COARSE-SILTY LOESS OVER GRAVELLY OUTWASH. SOIL CLASSIFICATION: MEDIAL OVER SANDY OR SANDY-SKELETAL, AMORPHIC OVER MIXED ANDIC HAPLOCYDYS. SOIL CLASSIFICATION: TYPE D

ENVIRONMENTAL INFORMATION:

1. RECEIVING WATER BODIES: EKLUTNA LAKE
2. IMPAIRED WATER BODIES: NONE
3. TOTAL MAXIMUM DAILY LOAD (TMDL) WATERS: N/A
4. THREATENED AND ENDANGERED SPECIES (ESA): NONE
5. HISTORIC IMPACTS: NONE KNOWN
6. CONTACT THE PROJECT ENGINEER WITH ADDITIONAL QUESTIONS
7. PROJECT LOCATED WITHIN THE DEC DRINKING WATER PROTECTION AREA (DWPA) FOR EKLUTNA LAKE.

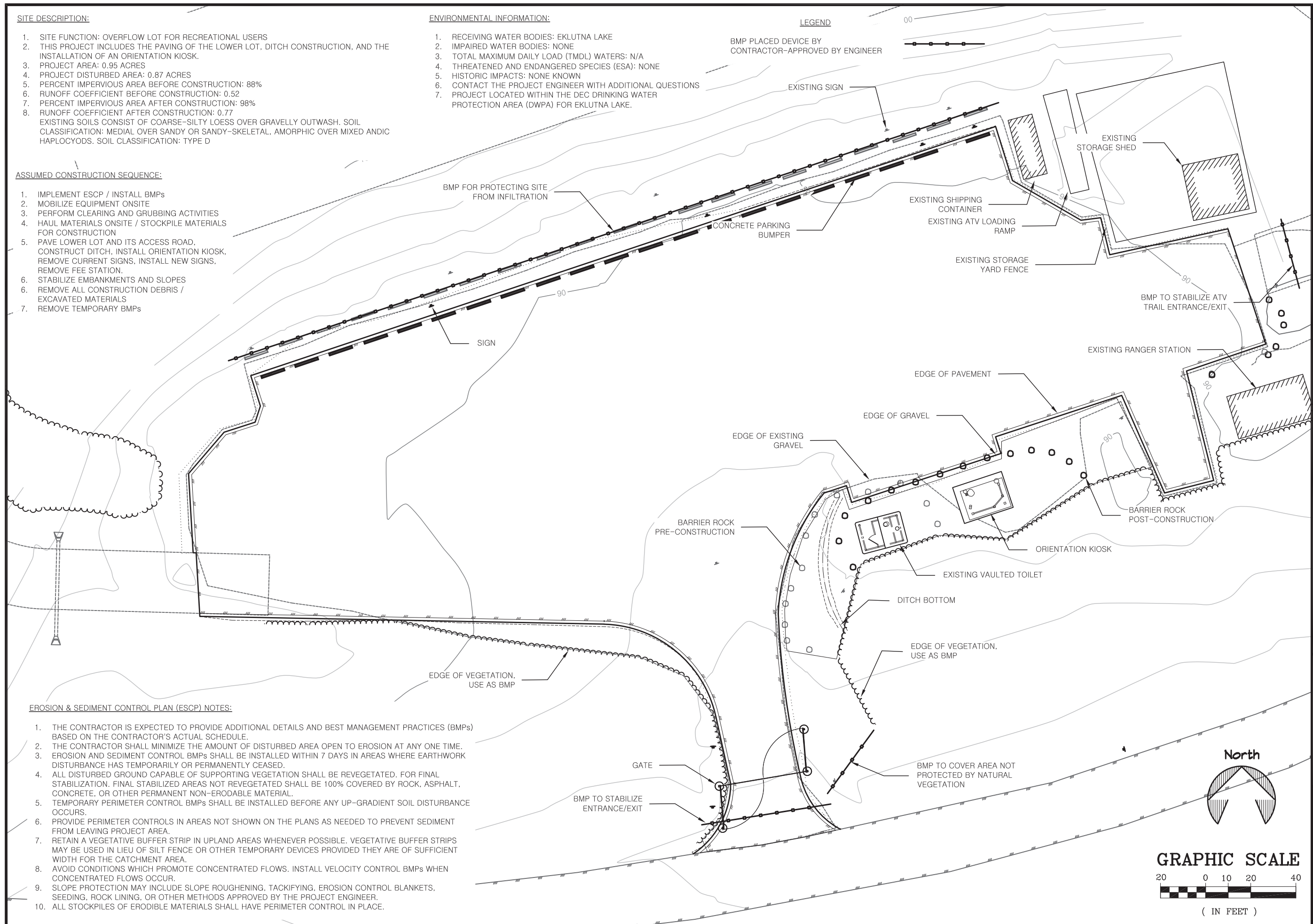
LEGEND

BMP PLACED DEVICE BY CONTRACTOR-APPROVED BY ENGINEER

EXISTING SIGN

ASSUMED CONSTRUCTION SEQUENCE:

1. IMPLEMENT ESCP / INSTALL BMPs
2. MOBILIZE EQUIPMENT ONSITE
3. PERFORM CLEARING AND GRUBBING ACTIVITIES
4. HAUL MATERIALS ONSITE / STOCKPILE MATERIALS FOR CONSTRUCTION
5. PAVE LOWER LOT AND ITS ACCESS ROAD, CONSTRUCT DITCH, INSTALL ORIENTATION KIOSK, REMOVE CURRENT SIGNS, INSTALL NEW SIGNS, REMOVE FEE STATION.
6. STABILIZE EMBANKMENTS AND SLOPES
6. REMOVE ALL CONSTRUCTION DEBRIS / EXCAVATED MATERIALS
7. REMOVE TEMPORARY BMPs



EROSION & SEDIMENT CONTROL PLAN (ESCP) NOTES:

1. THE CONTRACTOR IS EXPECTED TO PROVIDE ADDITIONAL DETAILS AND BEST MANAGEMENT PRACTICES (BMPs) BASED ON THE CONTRACTOR'S ACTUAL SCHEDULE.
2. THE CONTRACTOR SHALL MINIMIZE THE AMOUNT OF DISTURBED AREA OPEN TO EROSION AT ANY ONE TIME.
3. EROSION AND SEDIMENT CONTROL BMPs SHALL BE INSTALLED WITHIN 7 DAYS IN AREAS WHERE EARTHWORK DISTURBANCE HAS TEMPORARILY OR PERMANENTLY CEASED.
4. ALL DISTURBED GROUND CAPABLE OF SUPPORTING VEGETATION SHALL BE REVEGETATED. FOR FINAL STABILIZATION, FINAL STABILIZED AREAS NOT REVEGETATED SHALL BE 100% COVERED BY ROCK, ASPHALT, CONCRETE, OR OTHER PERMANENT NON-ERODABLE MATERIAL.
5. TEMPORARY PERIMETER CONTROL BMPs SHALL BE INSTALLED BEFORE ANY UP-GRADIENT SOIL DISTURBANCE OCCURS.
6. PROVIDE PERIMETER CONTROLS IN AREAS NOT SHOWN ON THE PLANS AS NEEDED TO PREVENT SEDIMENT FROM LEAVING PROJECT AREA.
7. RETAIN A VEGETATIVE BUFFER STRIP IN UPLAND AREAS WHENEVER POSSIBLE. VEGETATIVE BUFFER STRIPS MAY BE USED IN LIEU OF SILT FENCE OR OTHER TEMPORARY DEVICES PROVIDED THEY ARE OF SUFFICIENT WIDTH FOR THE CATCHMENT AREA.
8. AVOID CONDITIONS WHICH PROMOTE CONCENTRATED FLOWS. INSTALL VELOCITY CONTROL BMPs WHEN CONCENTRATED FLOWS OCCUR.
9. SLOPE PROTECTION MAY INCLUDE SLOPE ROUGHENING, TACKIFYING, EROSION CONTROL BLANKETS, SEEDING, ROCK LINING, OR OTHER METHODS APPROVED BY THE PROJECT ENGINEER.
10. ALL STOCKPILES OF ERODIBLE MATERIALS SHALL HAVE PERIMETER CONTROL IN PLACE.

STATE OF ALASKA, DEPARTMENT OF NATURAL RESOURCES
 PLANS DEVELOPED BY: DIVISION OF PARKS AND OUTDOOR RECREATION
 550 W 7TH AVE. SUITE 1340, ANCHORAGE, AK 99501 - 907.269.8731

EKLUTNA LAKE TRAILHEAD
 FACILITY IMPROVEMENTS
 PROJECT No. 73302-2

ESCP

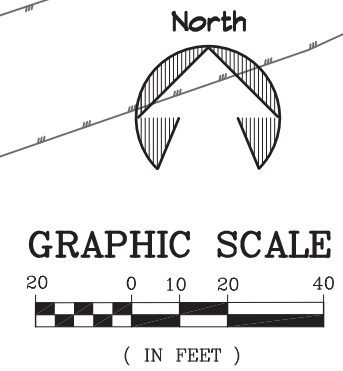


PREPARED: EEH
 DRAWN: EEH
 REVIEWED: D&C
 DATE: 4/2/2024

SHEET

1

OF 1 SHEETS



APPENDIX D MASTER MATERIAL CERTIFICATION LIST (MCL)

SPECIAL PROVISIONS
CSP: Eklutna Lake Trailhead
Facility Improvements
Project No. 73302-2

MATERIALS CERTIFICATION LIST

MATERIALS CERTIFICATION LIST									
		Construction			Design			Statewide	
	Specifications	Approved Products List	Project Engineer	QA/Materials Engineer	Design Engineer	Bridge Engineer	Traffic Engineer	State Materials Engineer	Manufacturer/ Remarks
Project Name	Eklutna Lake Trailhead Facility Improvemnts								
Project Number	73302-2								
Project Engineer Signature									
301 AGGREGATE BASE COURSE									
Aggregate for Base and Surface Course	703-2.03								
401 ASPHALT CONCRETE PAVEMENT									
Mix Design	401-2.01								
611 RIPRAP									
Riprap, Class 1	611-2.01								
615 STANDARD SIGNS									
Sheet Aluminum	615-2.02								
Reflective Sheeting	615-2.02								
<u>Sign Posts</u>									
Perforated Steel Posts	615-2.04								
Zinc Coating	615-2.05								
618 SEEDING									
Seed Mix	618-2.01								
Fertilizer	618-2.01								
Mulch	618-2.01								
620 TOPSOIL									
Topsoil Mix	620-2.01								
622 PARK FACILITIES - GENERAL									
Concrete	622-2.03								
Structural Steel	622-2.04								
Galvanizing	622-2.05								
Lumber	622-2.06								
Treated Lumber	622-2.07								

		Construction			Design			Statewide	
	Specifications	Approved Products List	Project Engineer	QA/Materials Engineer	Design Engineer	Bridge Engineer	Traffic Engineer	State Materials Engineer	Manufacturer/Remarks
Recycled Plastic Lumber	622-2.08								
Metal Roofing	622-2.09								
Fasteners	622-2.10								
Standard Park Padlock	622-2.11								
Signs									
Paint									
Solid Oil Stain	622-2.12								
Semi-Transparent Oil Stain	622-2.12								
Clear Oil Stain	622-2.12								
Metal Primer Paint	622-2.12								
Enamel Paint	622-2.12								
Concrete Sealer	622-2.12								
Above/Below Ground Preservative	622-2.12								
End Cut Preservative	622-2.12								
622 CONCRETE PARKING BUMPER									
Shop Drawings	650-2.13								
622 ORIENTATION KIOSK									
Orientation Kiosk	650-2.14								
631 Geotextile for Subsurface Drainage and Erosion Control									
Geotextile, Drainage, Class 2	631-2.01								
641 EROSION, SEDIMENT, AND POLLUTION CONTROL									
BMPs	641-2.05								
643 TRAFFIC MAINTNANCE									
Traffic Control Devices	643-2.01								