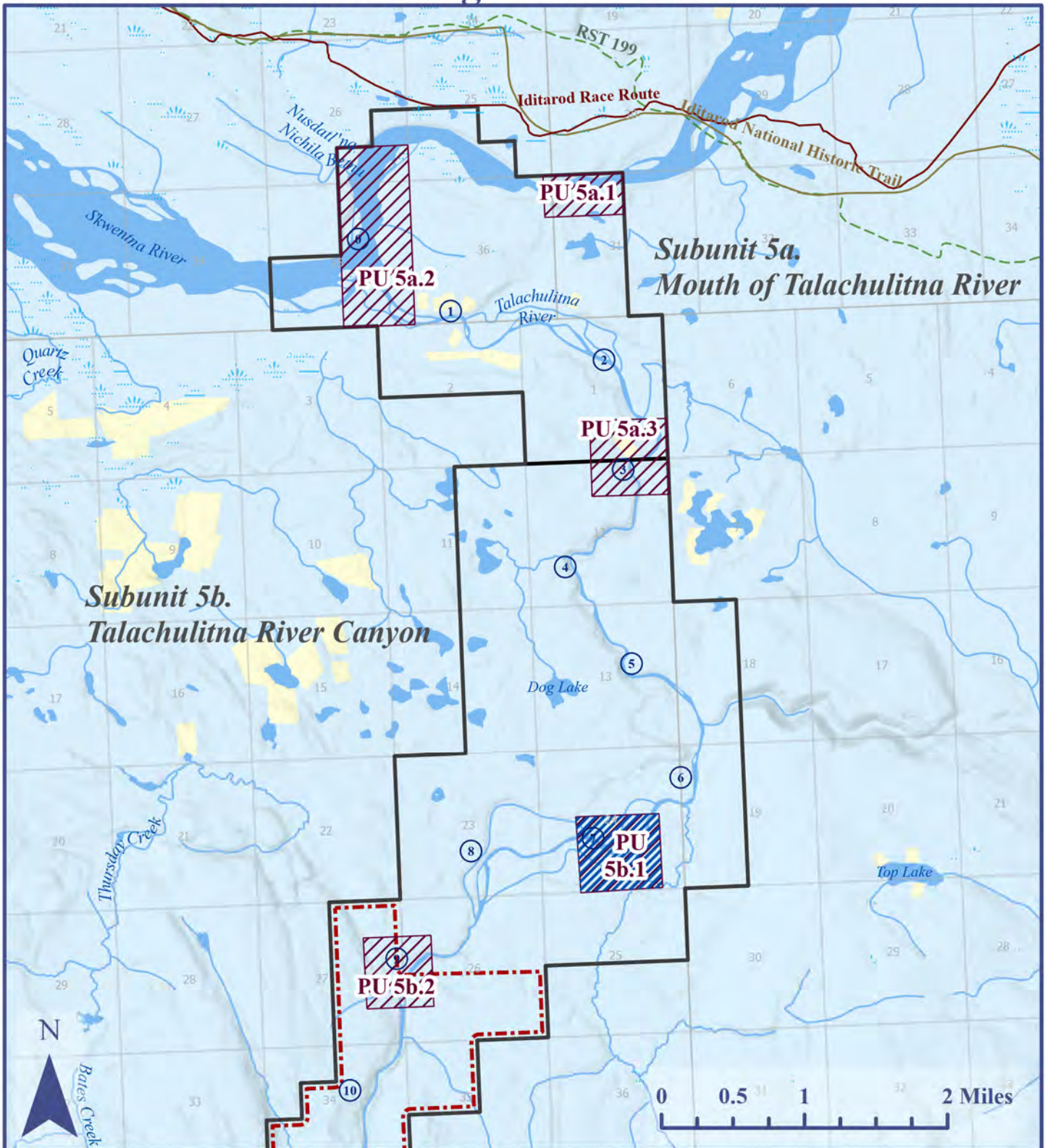


Talachulitna River Management Unit

MAP 1



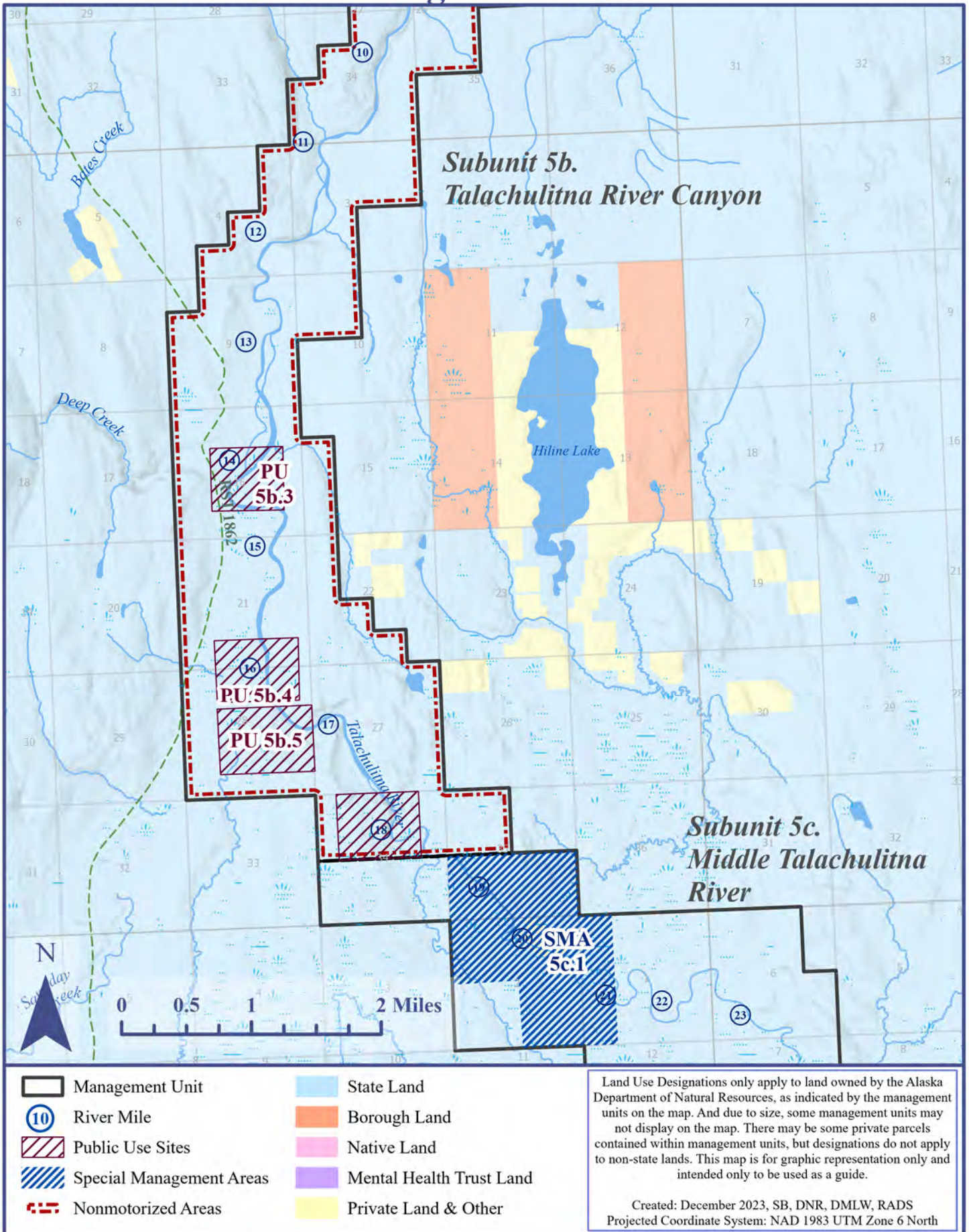
- | | |
|--------------------------|--------------------------|
| Management Unit | State Land |
| River Mile | Borough Land |
| Public Use Sites | Native Land |
| Special Management Areas | Mental Health Trust Land |
| Nonmotorized Areas | Private Land & Other |

Land Use Designations only apply to land owned by the Alaska Department of Natural Resources, as indicated by the management units on the map. And due to size, some management units may not display on the map. There may be some private parcels contained within management units, but designations do not apply to non-state lands. This map is for graphic representation only and intended only to be used as a guide.

Created: December 2023, SB, DNR, DMLW, RADS
 Projected Coordinate System: NAD 1983 UTM Zone 6 North

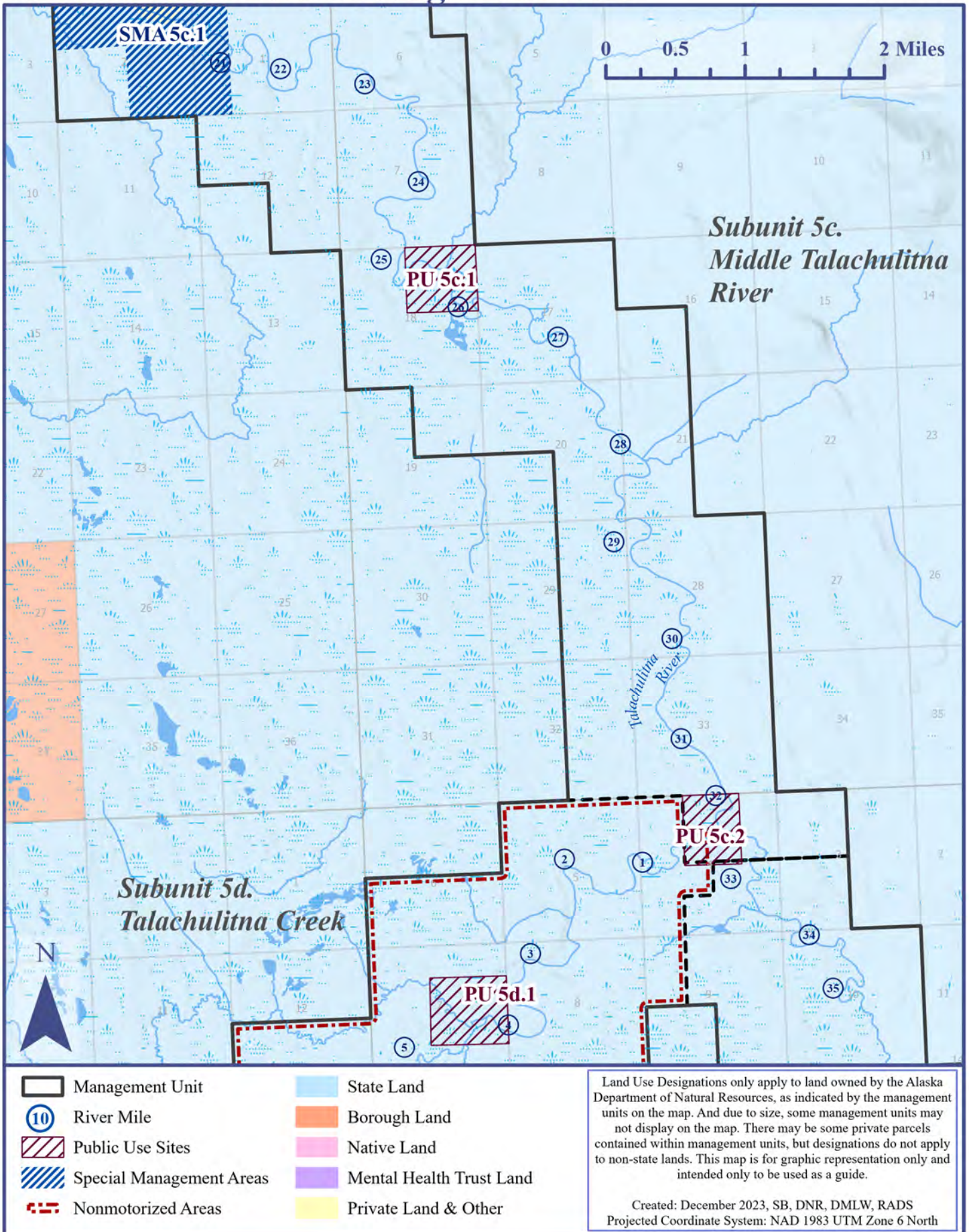
Talachulitna River Management Unit

MAP 2



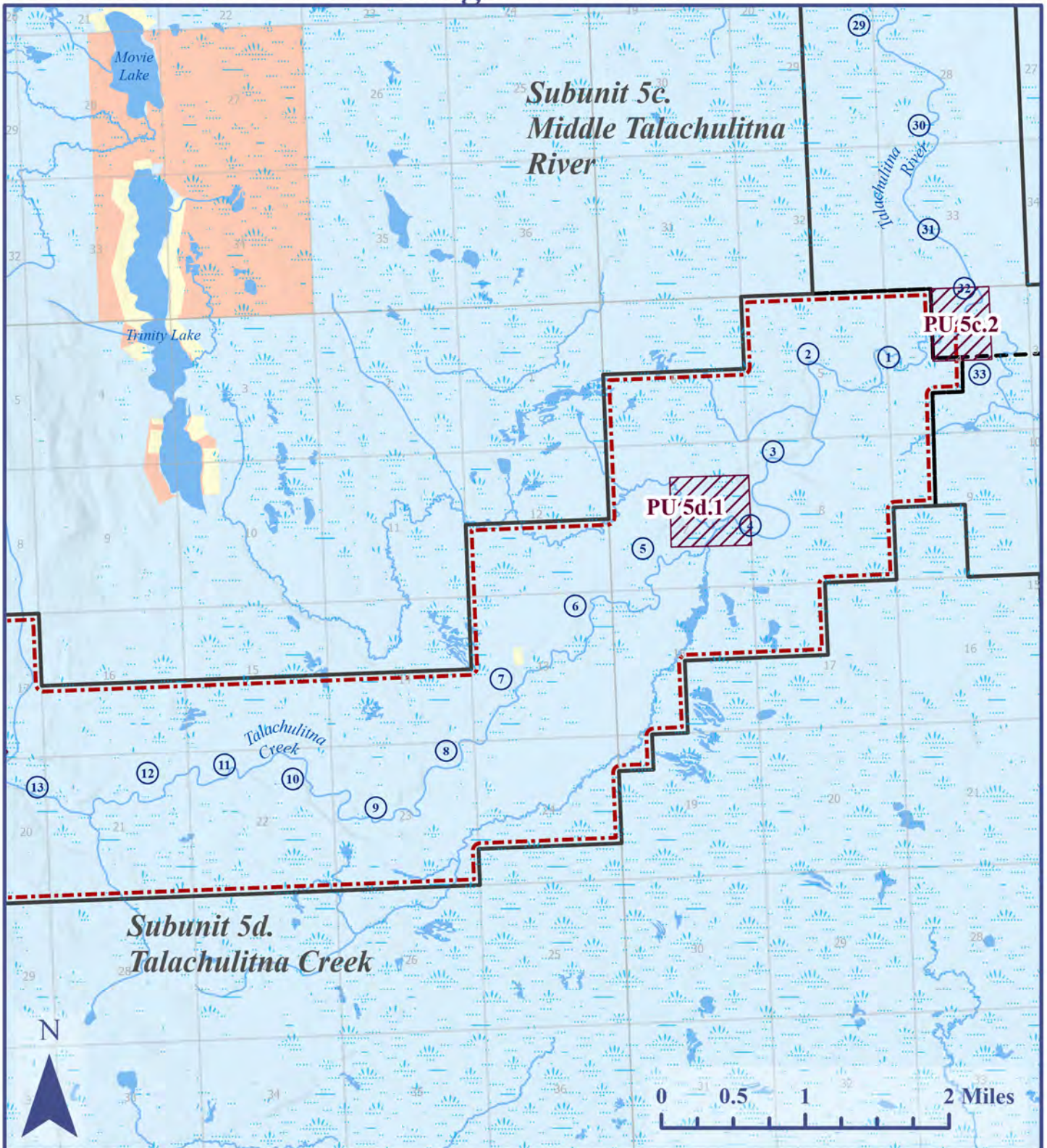
Talachulitna River Management Unit

MAP 3



Talachulitna River Management Unit

MAP 4



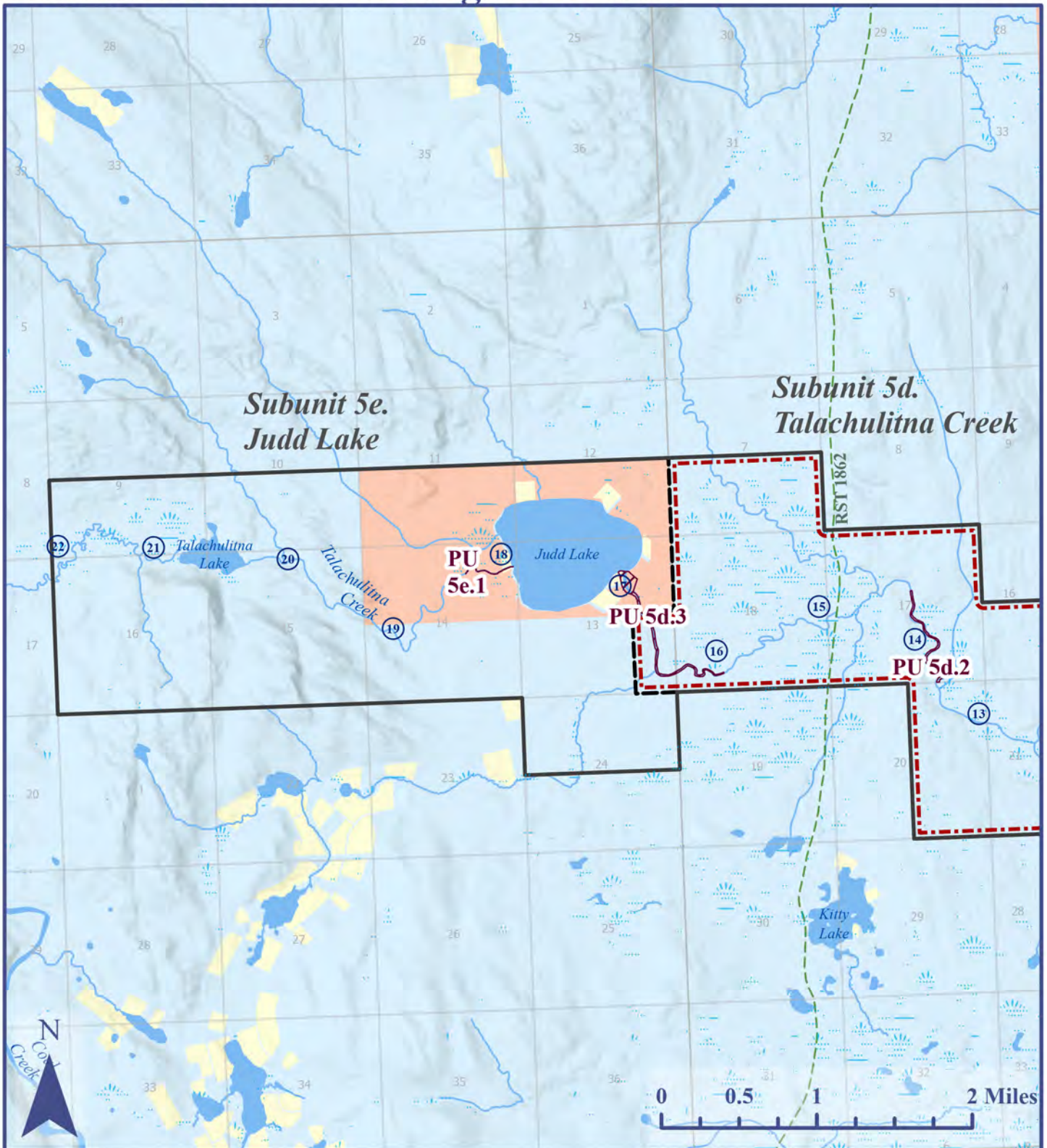
- | | |
|--------------------------|--------------------------|
| Management Unit | State Land |
| River Mile | Borough Land |
| Public Use Sites | Native Land |
| Special Management Areas | Mental Health Trust Land |
| Nonmotorized Areas | Private Land & Other |

Land Use Designations only apply to land owned by the Alaska Department of Natural Resources, as indicated by the management units on the map. And due to size, some management units may not display on the map. There may be some private parcels contained within management units, but designations do not apply to non-state lands. This map is for graphic representation only and intended only to be used as a guide.

Created: December 2023, SB, DNR, DMLW, RADS
 Projected Coordinate System: NAD 1983 UTM Zone 6 North

Talachulitna River Management Unit

MAP 5



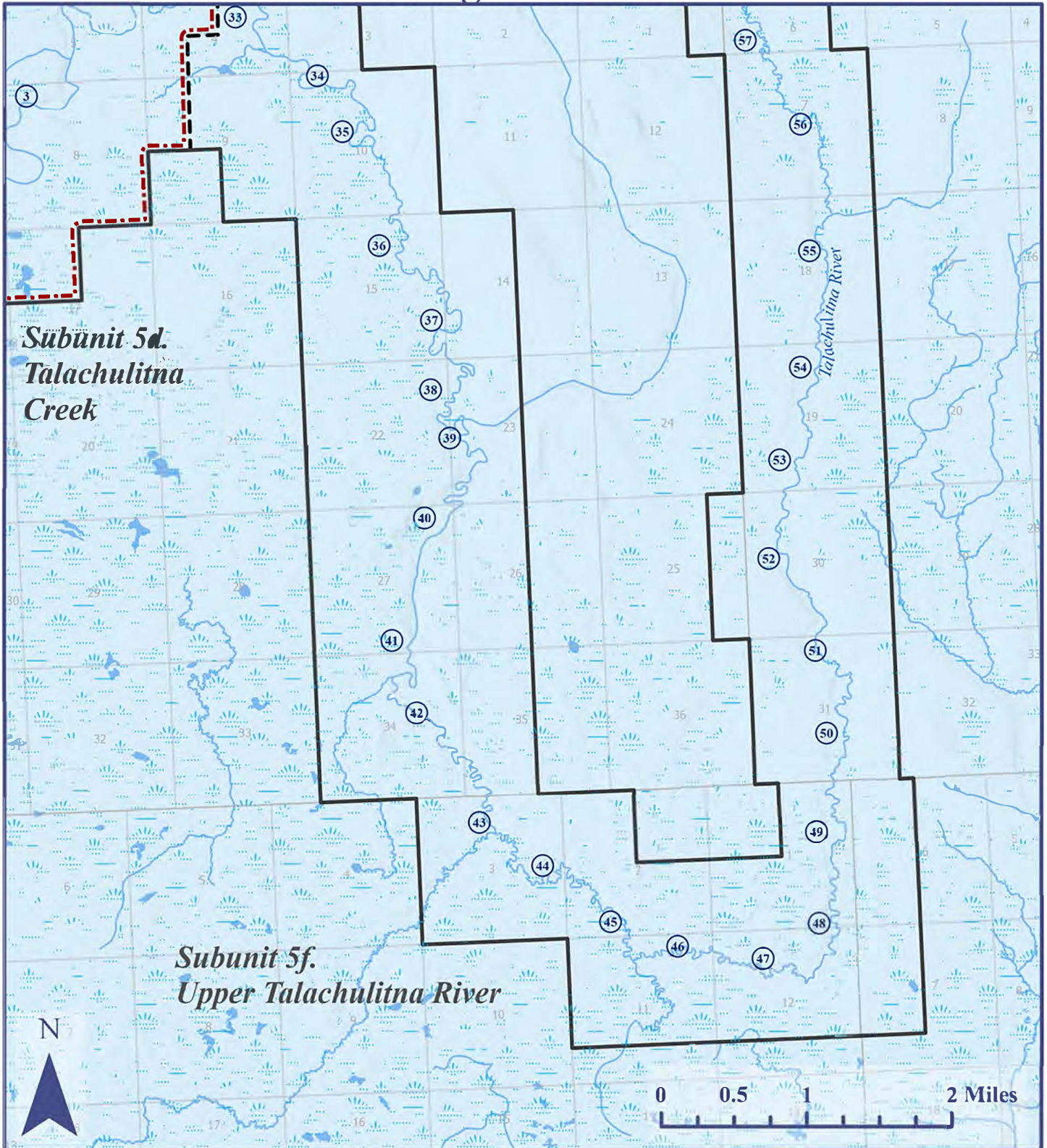
- | | |
|--------------------------|--------------------------|
| Management Unit | State Land |
| River Mile | Borough Land |
| Public Use Sites | Native Land |
| Special Management Areas | Mental Health Trust Land |
| Nonmotorized Areas | Private Land & Other |

Land Use Designations only apply to land owned by the Alaska Department of Natural Resources, as indicated by the management units on the map. And due to size, some management units may not display on the map. There may be some private parcels contained within management units, but designations do not apply to non-state lands. This map is for graphic representation only and intended only to be used as a guide.

Created: December 2023, SB, DNR, DMLW, RADS
 Projected Coordinate System: NAD 1983 UTM Zone 6 North

Talachulitna River Management Unit

MAP 6



Subunit 5d.
Talachulitna
Creek

Subunit 5f.
Upper Talachulitna River

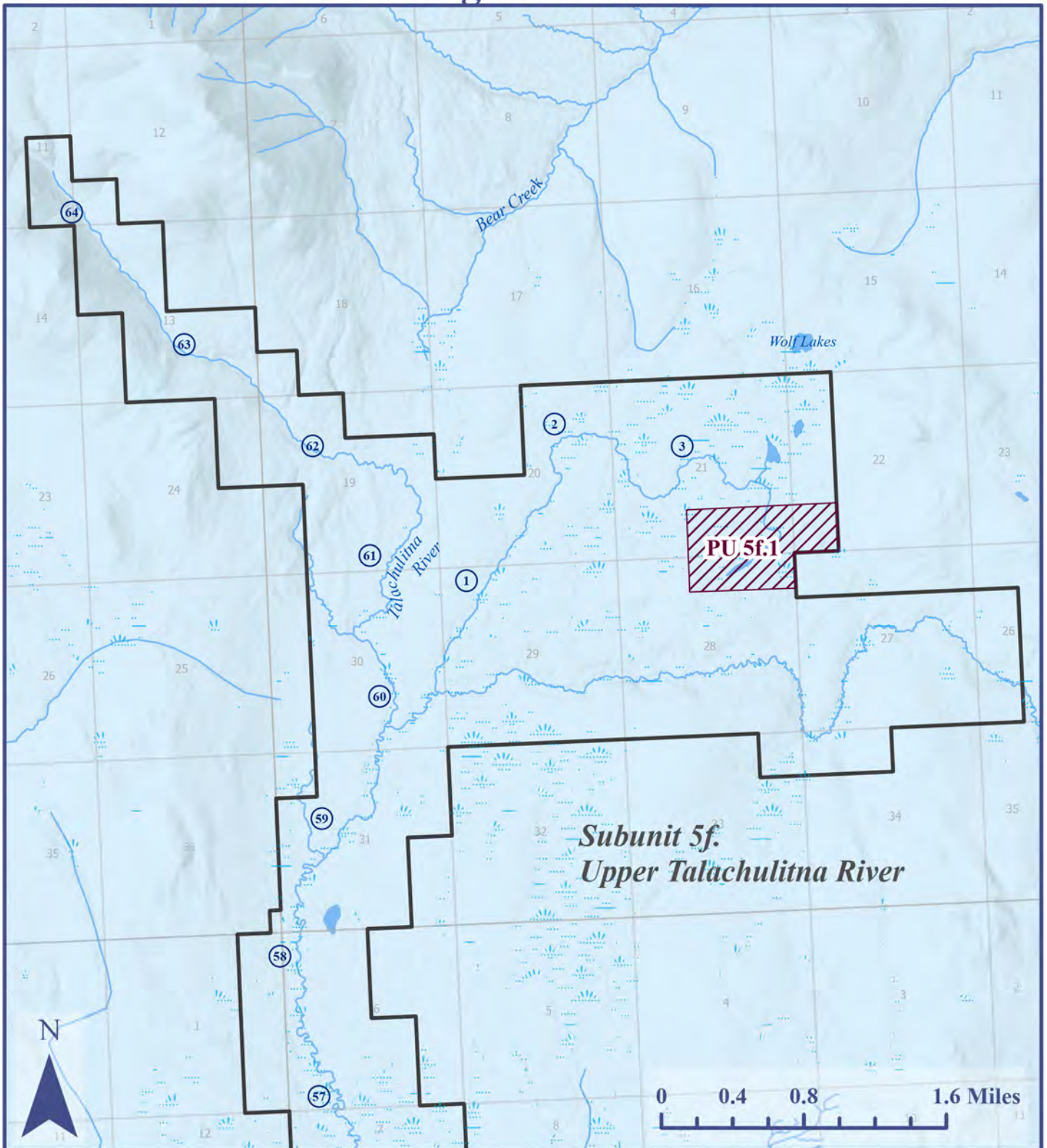
- Management Unit
- River Mile
- Public Use Sites
- Special Management Areas
- Nonmotorized Areas
- State Land
- Borough Land
- Native Land
- Mental Health Trust Land
- Private Land & Other

Land Use Designations only apply to land owned by the Alaska Department of Natural Resources, as indicated by the management units on the map. And due to size, some management units may not display on the map. There may be some private parcels contained within management units, but designations do not apply to non-state lands. This map is for graphic representation only and intended only to be used as a guide.

Created: December 2023, SB, DNR, DMLW, RADS
Projected Coordinate System: NAD 1983 UTM Zone 6 North

Talachulitna River Management Unit

MAP 7



- | | |
|--------------------------|--------------------------|
| Management Unit | State Land |
| River Mile | Borough Land |
| Public Use Sites | Native Land |
| Special Management Areas | Mental Health Trust Land |
| Nonmotorized Areas | Private Land & Other |

Land Use Designations only apply to land owned by the Alaska Department of Natural Resources, as indicated by the management units on the map. And due to size, some management units may not display on the map. There may be some private parcels contained within management units, but designations do not apply to non-state lands. This map is for graphic representation only and intended only to be used as a guide.

Created: December 2023, SB, DNR, DMLW, RADS
 Projected Coordinate System: NAD 1983 UTM Zone 6 North