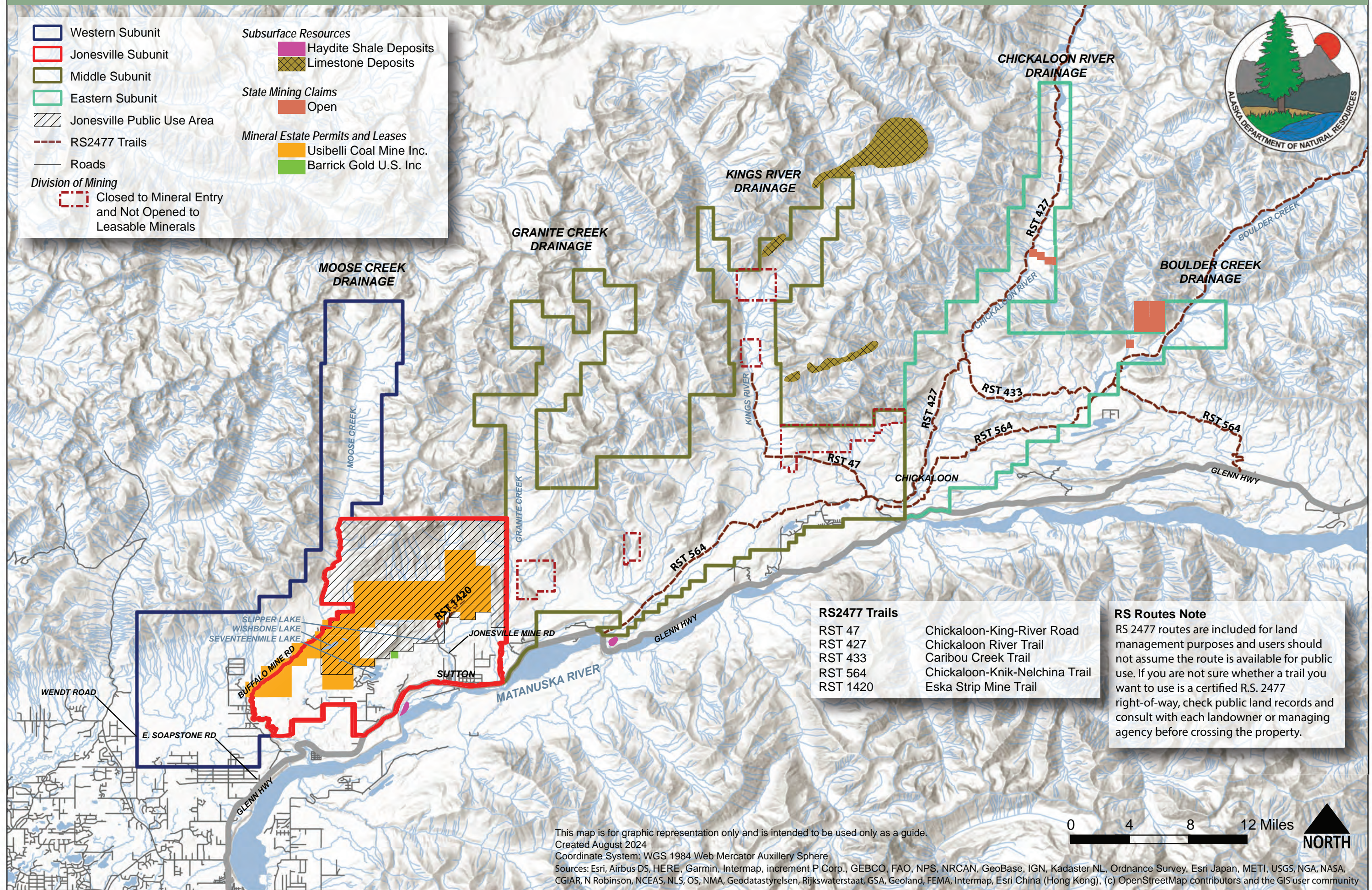


PLANNING AREA: MATANUSKA VALLEY MOOSE RANGE & JONESVILLE PUBLIC USE AREA - MINING CLAIMS AND MINERAL LEASES MAP 3



Western Subunit	Subsurface Resources	Haydite Shale Deposits
Jonesville Subunit	Limestone Deposits	
Middle Subunit	State Mining Claims	Open
Eastern Subunit	Mineral Estate Permits and Leases	Usibelli Coal Mine Inc.
Jonesville Public Use Area	Barrick Gold U.S. Inc.	
RS2477 Trails		
Roads		
Division of Mining		
Closed to Mineral Entry and Not Opened to Leasable Minerals		



RS2477 Trails

RST 47	Chickaloon-King-River Road
RST 427	Chickaloon River Trail
RST 433	Caribou Creek Trail
RST 564	Chickaloon-Knik-Nelchina Trail
RST 1420	Eska Strip Mine Trail

RS Routes Note
 RS 2477 routes are included for land management purposes and users should not assume the route is available for public use. If you are not sure whether a trail you want to use is a certified R.S. 2477 right-of-way, check public land records and consult with each landowner or managing agency before crossing the property.

This map is for graphic representation only and is intended to be used only as a guide.
 Created August 2024
 Coordinate System: WGS 1984 Web Mercator Auxillary Sphere
 Sources: Esri, Airbus DS, HERE, Garmin, Intermap, increment P Corp., GEBCO, FAO, NPS, NRCAN, GeoBase, IGN, Kadaster NL, Ordnance Survey, Esri Japan, METI, USGS, NGA, NASA, CGIAR, N Robinson, NCEAS, NLS, OS, NMA, Geodatastyrelsen, Rijkswaterstaat, GSA, Geoland, FEMA, Intermap, Esri China (Hong Kong), (c) OpenStreetMap contributors and the GIS user community

