

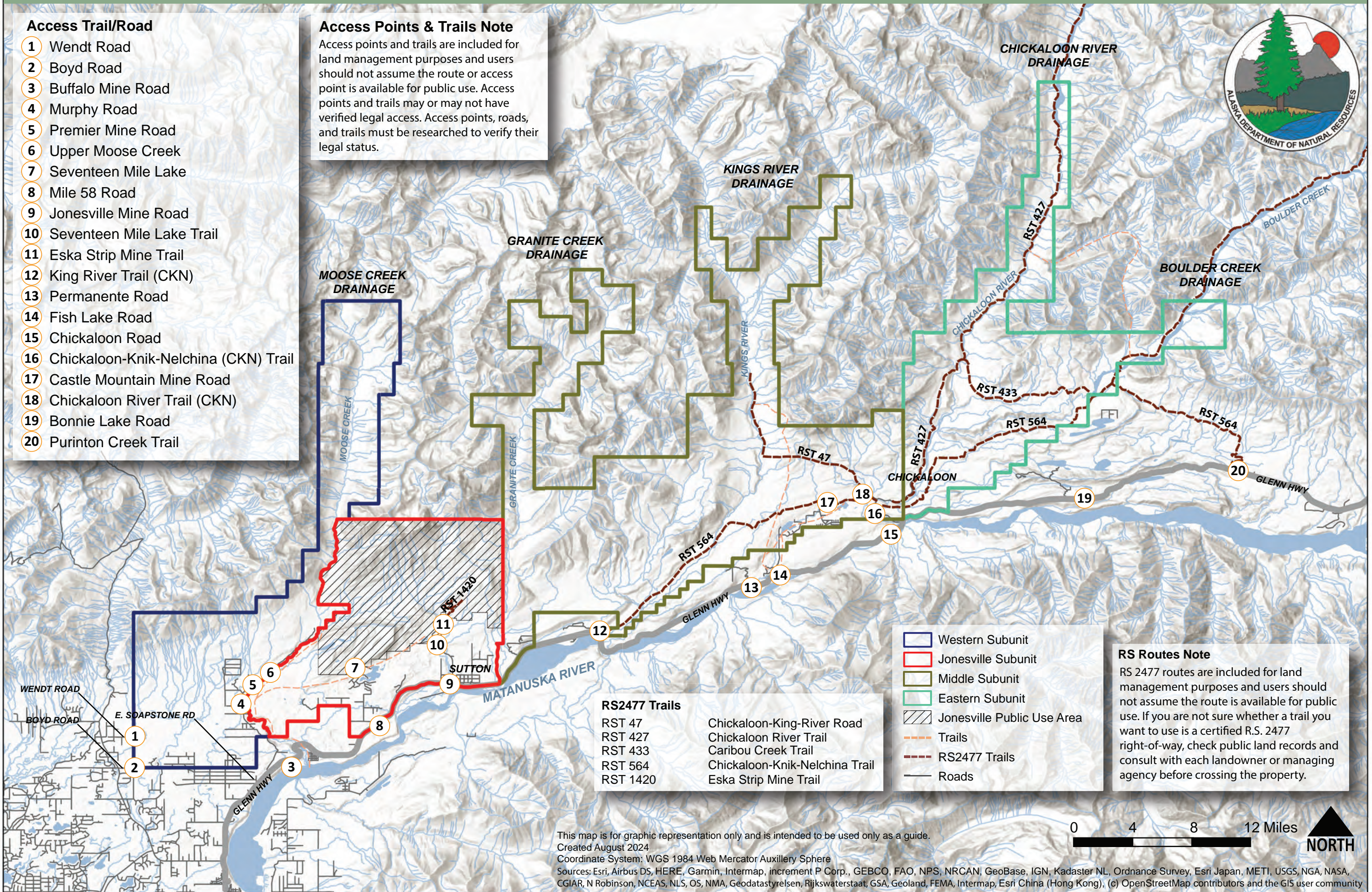


Access Trail/Road

- 1 Wendt Road
- 2 Boyd Road
- 3 Buffalo Mine Road
- 4 Murphy Road
- 5 Premier Mine Road
- 6 Upper Moose Creek
- 7 Seventeen Mile Lake
- 8 Mile 58 Road
- 9 Jonesville Mine Road
- 10 Seventeen Mile Lake Trail
- 11 Eska Strip Mine Trail
- 12 King River Trail (CKN)
- 13 Permanente Road
- 14 Fish Lake Road
- 15 Chickaloon Road
- 16 Chickaloon-Knik-Nelchina (CKN) Trail
- 17 Castle Mountain Mine Road
- 18 Chickaloon River Trail (CKN)
- 19 Bonnie Lake Road
- 20 Purinton Creek Trail

Access Points & Trails Note

Access points and trails are included for land management purposes and users should not assume the route or access point is available for public use. Access points and trails may or may not have verified legal access. Access points, roads, and trails must be researched to verify their legal status.



RS2477 Trails

RST 47	Chickaloon-King-River Road
RST 427	Chickaloon River Trail
RST 433	Caribou Creek Trail
RST 564	Chickaloon-Knik-Nelchina Trail
RST 1420	Eska Strip Mine Trail

	Western Subunit
	Jonesville Subunit
	Middle Subunit
	Eastern Subunit
	Jonesville Public Use Area
	Trails
	RS2477 Trails
	Roads

RS Routes Note
 RS 2477 routes are included for land management purposes and users should not assume the route is available for public use. If you are not sure whether a trail you want to use is a certified R.S. 2477 right-of-way, check public land records and consult with each landowner or managing agency before crossing the property.