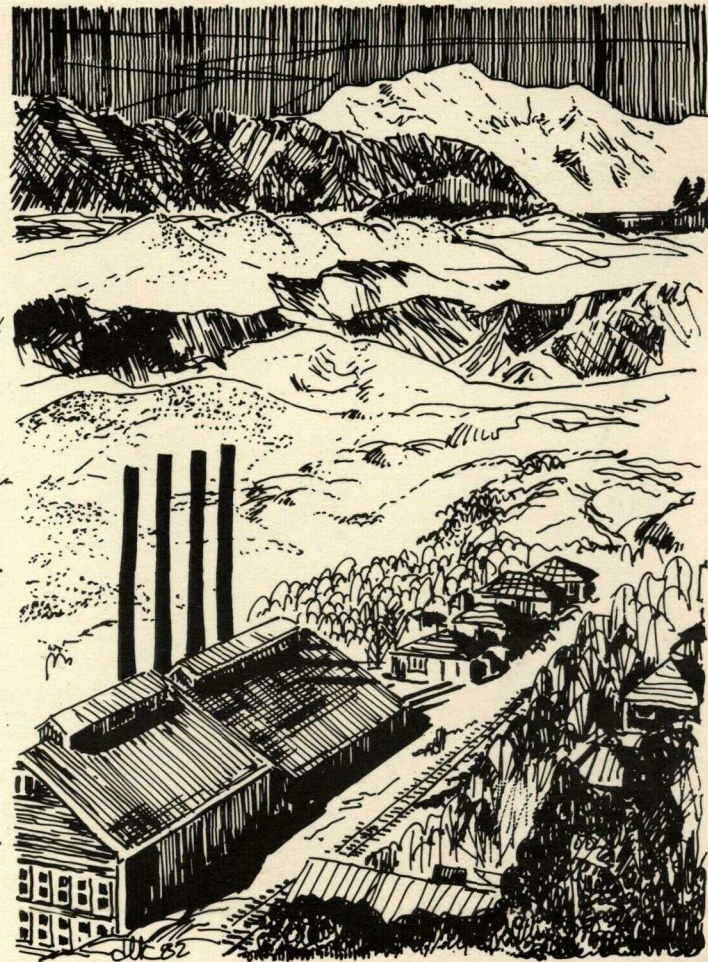
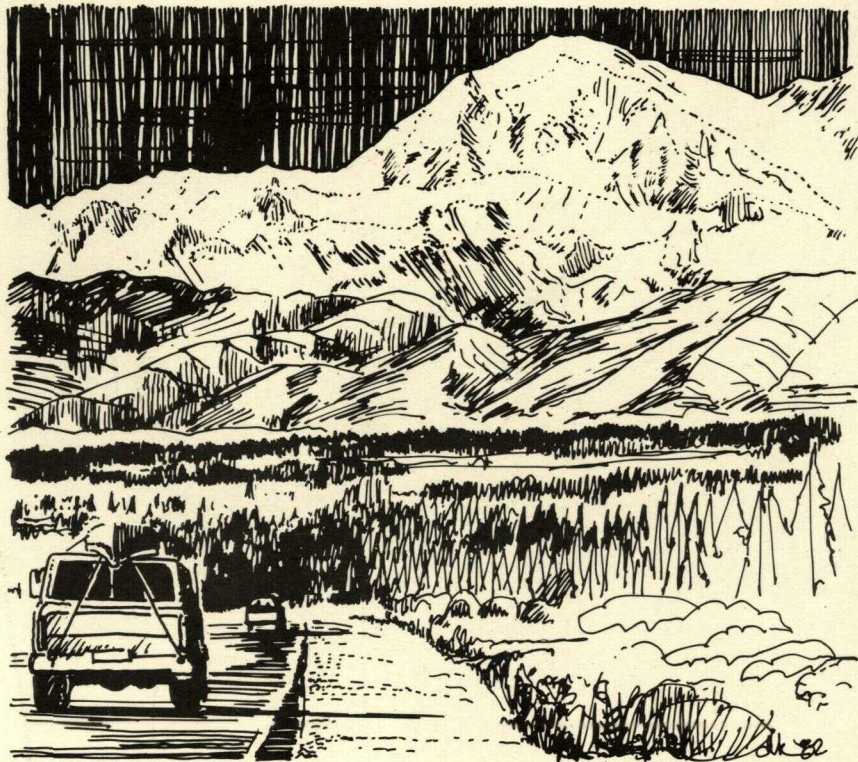


Denali to



Wrangell - St. Elias

**Assessment and Management of Scenic
Resources along the Highways between Denali
and Wrangell - St. Elias National Parks**

Denali to Wrangell - St. Elias

prepared by

Dennis Lloyd Kuklok

Susan G. Heikkala

Karen Fleck-Harding

Linda Arndt

William Peterson

with the assistance of

Land & Resource

Planning Section Staff

for

Alaska Dept. of Natural

Resources, Div. of Research &

Development Land & Resource

Planning Section

William Beaty, Section Chief

July, 1982

"This ain't no piano."

--A.F.K. 1980

contents

Part One

Background Information

	page
Introduction	3
Study Context	4
Scenic Resource Assessment	
Methodology	6
Definitions	12

Part Two

Findings & Recommendations

Study Area	18
Denali Wild & Scenic Road	D1
Central Richardson Highway	R1
Edgerton Highway	E1
McCarthy Wild & Historic Road	M1

"All good planning must begin with a survey of the actual resources: the landscape, the people, the work-a-day activities in a community. Good planning does not begin with an abstract and arbitrary scheme that it seeks to impose on the community: it begins with a knowledge of existing conditions and opportunities."

Lewis Mumford
The City in History

"The less of our landscape there is to save, the better our chances of saving it. It is a shame we have to lose so much land to learn the lesson, but desecration does seem a prerequisite for action. People have to be outraged. Most of the new land-use legislation and pioneering programs did not come about as the result of foresighted, thoughtful analysis. They came about because people got mad over something they could see. Some of the most significant legislation can be traced to a small local outrage - a line of trees being chopped down for a highway, a meadow being asphalted for a parking area."

William H. Whyte
The Last Landscape