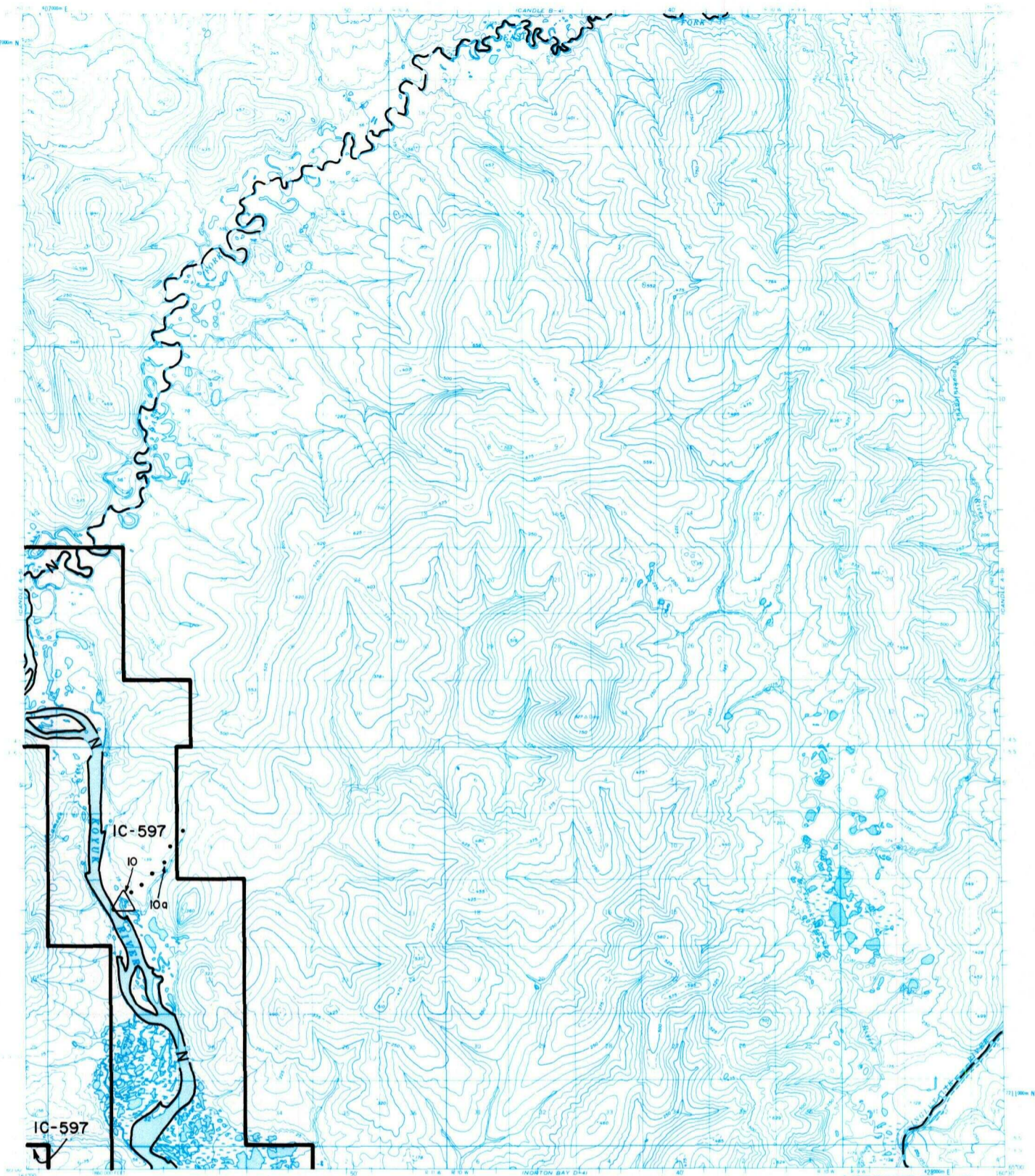
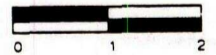


# CANDLE A-4



- |                      |                            |                            |
|----------------------|----------------------------|----------------------------|
| IC OR PATENT BDY.    | FED. DETERMINED NAVIGABLE  | NATIONAL PRESERVE LAND BDY |
| WATER EXCLUSION BDY. | STATE DETERMINED NAVIGABLE | EASEMENTS & ACCESS ROUTES  |



Scale in Miles

May 1989

## RESERVED EASEMENTS

- EIN 10** A one (1) acre site easement upland of the ordinary high water mark in Section 17, T. 5 S., R. 11 W., K.R.M., on the left bank (looking downstream) of the Koyuk River.
- EIN 10a** An easement for an access trail twenty-five (25) feet in width from site EIN 10 in Section 17, T. 5 S., R. 11 W., K.R.M., northeasterly to public land.