

◆ RESERVED EASEMENTS:

Kazakof Bay - Discoverer Bay Road

A trail on the existing road from Kazakof Bay to Discoverer Bay. Legal access provided by EIN 38, EIN 6c and ANILCA 1427(b)(5).

EIN 6f

A campsite on the south shore of Portage Lake. (one-acre site)

EIN 6i

A proposed trail from site EIN 6f along the south shore of Portage Lake to trail EIN 27. (25-foot trail)

EIN 27

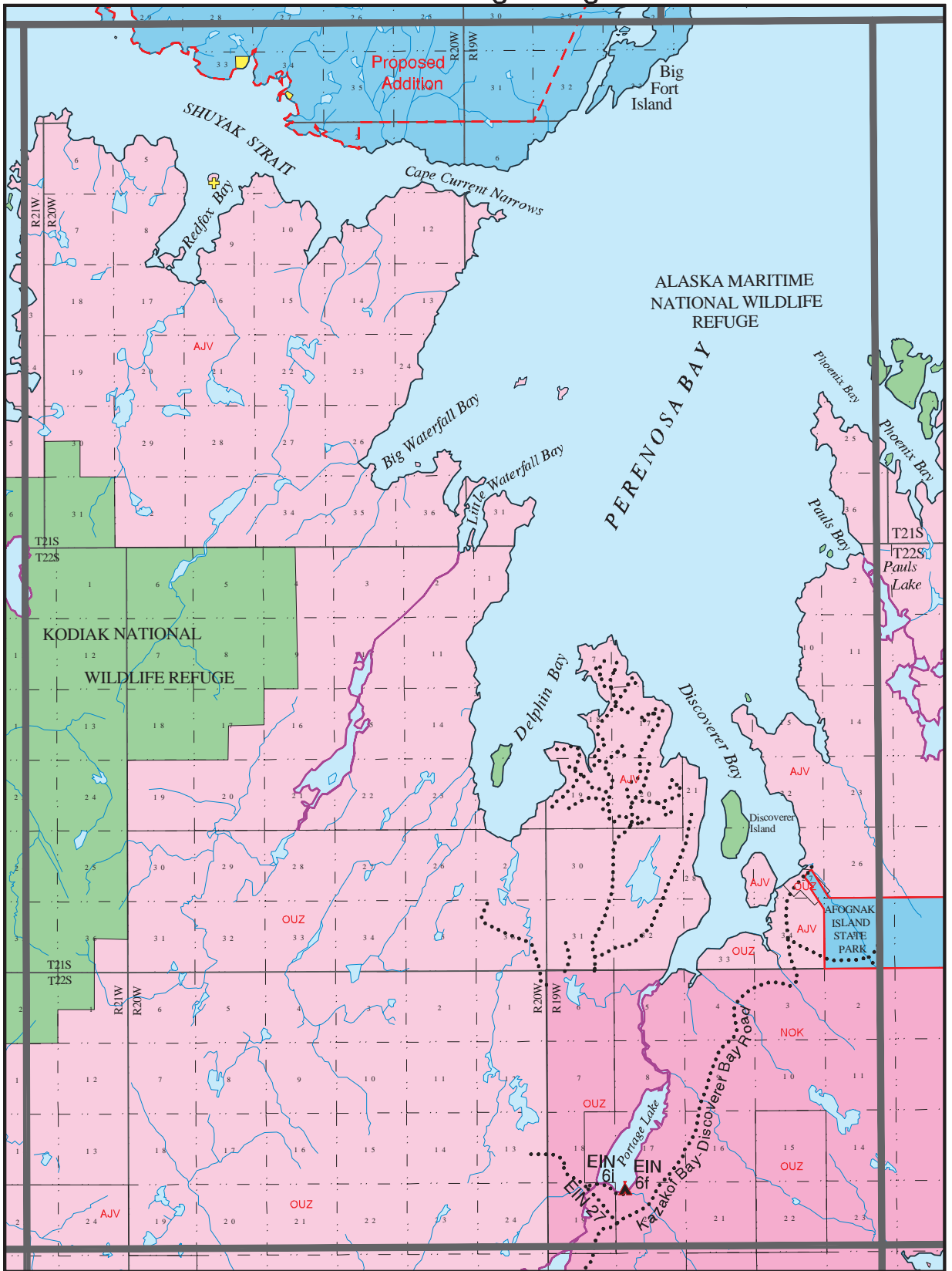
An existing and proposed trail from the Kazakof Bay - Discoverer Bay Road to Portage Lake and continuing northwesterly. (25-foot trail)

FEDERAL CONSERVATION EASEMENT

State land shown with a red dashed line is protected by a covenant providing that there shall be no commercial timber harvest nor any other commercial use until the property is designated a state park. Public use shall be permitted in perpetuity and shall include sport and subsistence hunting, fishing, trapping, and recreational uses.

See additional information in general information for **Easements**, and specifically **ANILCA 1427(b)(5) easements**, within that section for allowable uses and restrictions for land on Afognak Island identified as Native owned with Public Access.

USGS Quadrangle Afognak B-2



- KODIAK PUBLIC ACCESS ATLAS LEGEND -

- | | | | | |
|---------------------------------|---|----------------|----------------|------------------------------------|
| State | Mental Health | Highway | Campsite | Wheel Strip |
| Native | University | Roads | Public Cabin | Beach Strip |
| Native owned with Public Access | Private | Trails | Boat Launch | Floatplane |
| USF&WS | Private Tideland | Winter Trails | Dock | State Determined Navigable Water |
| Katmai Natl Park | Municipal Tideland | Atlas Boundary | Visitor Center | Federal Determined Navigable Water |
| Other Federal | Alaska State Park | USGS Quad | Picnic Site | |
| Military | Critical Habitat Area | | | |
| Municipal | Small Parcel- color indicates ownership | | | |

March, 1997