

ILIAMNA D-1

■ RESERVED EASEMENTS

EIN 28

An easement for an existing trail from site EIN 29 on the south shore of Chinitna Bay south to public land. (25-foot trail)

EIN 29

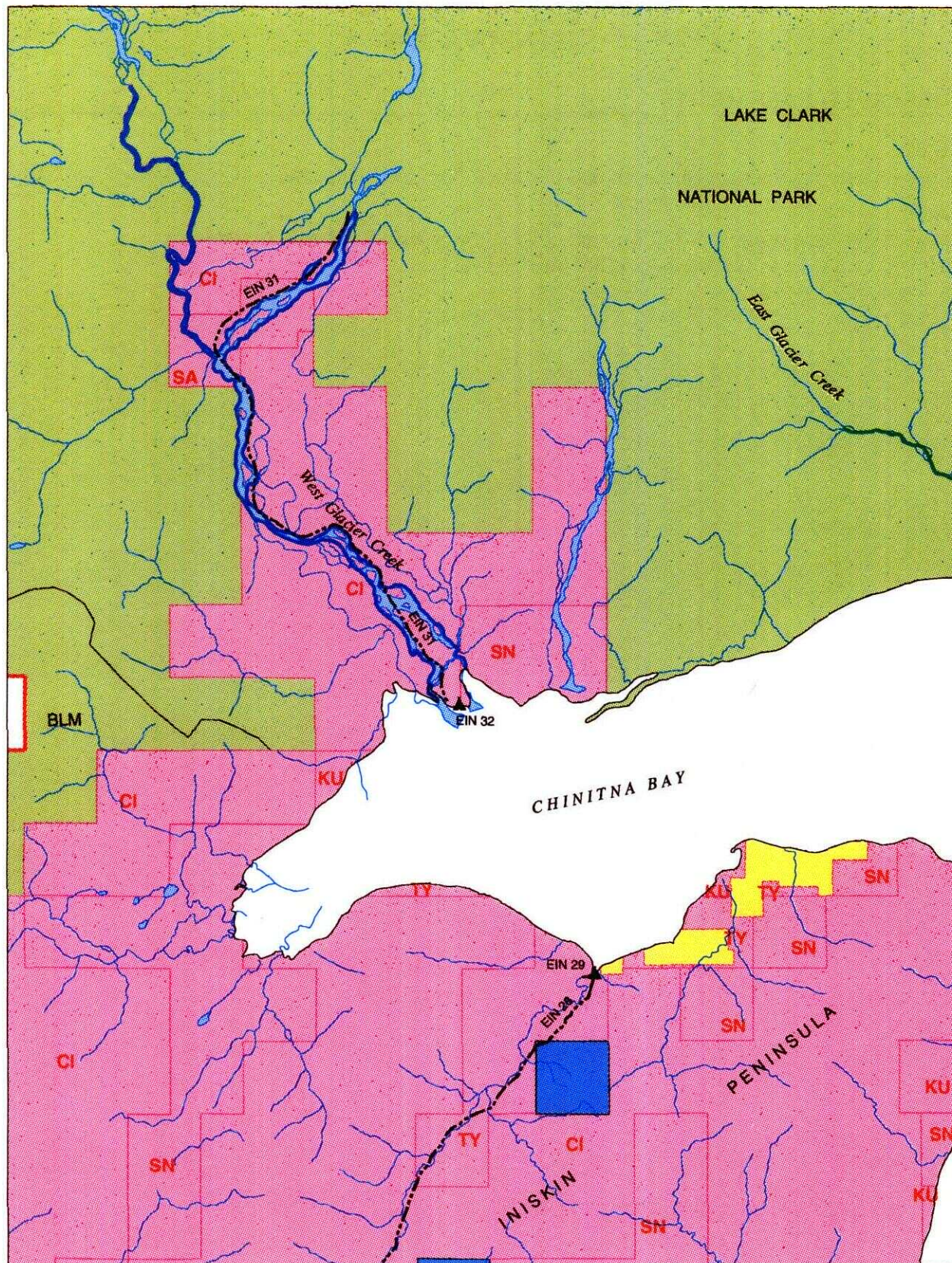
A one-acre site easement located on the south shore of Chinitna Bay. (one-acre site)

EIN 31

An easement for a proposed access trail from site EIN 32 north to public land. (25-foot trail)

EIN 32

A one-acre site easement on the north shore of Chinitna Bay on the left bank of West Glacier Creek. (one-acre site)



1 inch equals 2 miles



KENAI EASEMENT ATLAS

1993

LAND OWNERSHIP

- Federal
- Private - Includes Mental Health, University of Alaska, Alaska Railroad & Native Allotments
- State
- Borough & Municipal
- ANSCA Corporation
- State Determined Navigable Water
- Federal Determined Navigable Water

ROADS & TRAILS

- State-Maintained Roads
- Improved Roads
- 4WD Trails
- ATV Trails
- Snowmachine Trails
- Horse Trails
- Foot Trails
- Alaska Railroad

MISC

- Atlas Boundary

SITES

- Canoe Launch
- Skiff Launch
- Campsite
- Parking Area
- Picnic Area
- Landing Strip
- Public Cabin
- Visitor Information