

## **Interior Highlands Region (I)**

The Interior Highlands Region encompasses an area of 8,242,053 acres and is situated in the southern part of the planning area. The area, generally described, abuts the border of the Yukon Flats National Wildlife Refuge to the north and follows the borders of the Upper Yukon Area Plan, the Eastern Tanana Area Plan, and the Yukon Tanana Area Plan on its southern edge. The community of Central is located within this region. Mining operations dominated the region throughout the past century. Central's location as a stopping point between the mining in the mountains to the southwest and Circle has allowed its population to remain steady over the decades. Infrastructure in the area mainly consists of dispersed cabins and homes. Intensive infrastructure also exists in Circle Hot Springs but has been abandoned and become dilapidated.

The Interior Highlands Region is mountainous with streams and rivers bisecting the area. Isolated wetlands occur near the Yukon River. It is an important area for caribou, Dall sheep, and breeding for birds of conservation concern; one extensive important bird area, crucial habitats identified by the National Audubon Society, is within the region.

### **Distribution and Characteristics**

Land ownership is mixed throughout this region and includes state land, private land, Native land, and federal land. State land and state selected land are concentrated along the Steese Highway and between the Ikheenjik and Yukon Rivers and make up 800,031 acres and 61,298 acres respectively. Private land, derived from land disposals and Native allotments comprise 9,885 acres. Native owned land is generally located around villages and in the mountains north of the upper Yukon River; these lands account for 862,173 acres. The remainder of the land is federally owned, 6,500,490 acres, mainly located within the Yukon-Charley River National Preserve, the Steese National Conservation Area, and the White Mountains National Recreation Area.

### **Access, Resources, and Uses of State Land**

Access to this region is primarily by the Steese Highway or fly-in. Within the region, access is with snowmachines in the winter and ATVs in the summer. The natural resources of the Interior Highlands are the abundant mineral and animal resources that can provide utility or economic benefit to humans. The mineral resources include major deposits of gold.

Biological resources of the highlands are primarily caribou, Dall sheep, and birds. There is high use of the region for hunting, fishing, and general subsistence activities.

## Management Planning Constraints and Considerations

No state or local management plans have previously affected this area.

## Management Summary

State land will be managed consistent with its designation(s), as specifically articulated through management intent found in the Resource Allocation Table in Chapter 3 and the applicable goals, objectives, and guidelines found in Chapter 2. Some lands have one designation while other lands are co-designated. The table below provides a quick reference of the designations and co-designations used in this region and their acreages.

<b>Designation or Co-Designations</b>	<b>Acreage</b>
Habitat / Harvest / Public Recreation- Dispersed	145,041
Minerals	5,082
Mineral / Habitat	55,827
Settlement-Commercial	378
Settlement	58,528
Habitat / Public Recreation-Dispersed	13,867
Habitat	209,532
Resource Management	350,190
Forestry	20,959
Public Facilities-Retain	413
Materials / Habitat	388
Habitat / Harvest / Water Resources	66,207

1 **Resource Allocation Table – Interior Highlands Region**

2

Unit # / Name	Designation/ Acres	Map	Management Intent	Resources and Uses
I-01 Steese Highway Corridor	Rd, Ha, Hv 145,041ac	3-4a	<p>Manage the unit to support subsistence hunting, fishing and gathering, recreation, hunting opportunities, and preservation of water quality.</p> <p>Minimize impacts to fish and wildlife habitat values and harvest opportunities. Decisions related to development shall consider potential impacts on the habitat and harvest values and include stipulations/ conditions/measures that will avoid, minimize, or mitigate potential negative effects. DNR shall consult ADF&amp;G regarding authorizations involving uses that may impact caribou or moose.</p> <p>Authorizations that may impact RS 2477 routes should ensure access is maintained. Lands within easements, including the Pinnell Mountain trail, shall be retained in state ownership.</p> <p>Provide continuity for existing transportation and for future linear projects consistent with public and industrial needs. Maintain opportunities for subsistence.</p> <p>Portions of this unit are affected by MCO 621.</p> <p>Protect heritage sites.</p>	<p>This unit is comprised of state-owned and state-selected uplands, as well as shorelands and waters within the Steese Highway Corridor. The unit is comprised of an approximately 5-mile buffer on either side of the center line of the Steese Highway from where the highway enters the planning boundary to MM 117.5. This unit is very accessible and heavily used by visitors to this area. The terrain consists of rugged highlands and mountain passes. Vegetation is generally shrubland with pockets of evergreen forest in the mountain valleys.</p> <p>Authorized linear projects may occur in the future. There are leases (ADL 419000, ADL 415293, and ADL 419867) for communication systems on Porcupine Dome. There are public easements (ADL 412098, ADL 412443, ADL 412099, ADL 418969, and ADL 415583) for access. A potential hazard site (ADL 420459) for the Ptarmigan Creek dump is located off the Steese Highway.</p> <p>Caribou have calving and winter use areas throughout the unit, along with a migration corridor. There are known winter use areas for moose along an approximately one-mile buffer of Crooked Creek. Sport hunting for caribou is extensive in this unit. There is also a notable amount of upland bird hunting, particularly for ptarmigan. The Ptarmigan Eagle Creek Study Area utilized by ADF&amp;G is within this unit.</p> <p>Recreation occurs throughout the unit, generally along the highway corridor.</p> <p>Many slivers of selected land are present in this unit and are a high priority status. Selections occur in the following townships: F007N011E, F008N009E, F008N010E, F009N011E, F008N012E, F008N013E. The remaining land is state owned.</p> <p>RS 2477 Trails are located within this unit and include: (RST 237) Circle - Fairbanks Trail (RST 280) Chatanika - 12 Mile Summit (Winter) (RST 815) Birch Creek Trail (RST 1604) Frying Pan Creek Trail (RST 1856) Mastodon Creek - Eagle Creek (RST 1477) Mastodon Creek - Mastodon Dome - Deadwood Creek Trail</p> <p>The AHRS reports heritage sites in or around this unit.</p>

Unit # / Name	Designation/ Acres	Map	Management Intent	Resources and Uses
I-02 Bonanza Creek	Mi, Ha 5,713ac	3-4a	<p>Manage unit for its mineral values and resources and for its important caribou habitat.</p> <p>Any mineral development shall, in addition to the management guidelines of the Fish and Wildlife section of Chapter 2, consider impacts upon sensitive caribou habitat. Consult ADF&amp;G prior to issuing an authorization involving a long-term or permanent use.</p> <p>Protect heritage sites.</p>	<p>There are many APMAs and mining operations that have been conducted on placer deposits.</p> <p>Caribou calving and wintering occur throughout the unit.</p> <p>A small sliver of this unit's land is in selection status with a high priority level. The selection occurs in F008N012E Section 7. The remaining land is state owned.</p> <p>The AHRS reports heritage sites in or around this unit.</p>
I-03 Butte Creek	Mi, Ha 2,655ac	3-4a	<p>Manage unit for its mineral values and resources and for its important caribou habitat.</p> <p>Any mineral development shall, in addition to the management guidelines of the Fish and Wildlife section of Chapter 2, consider impacts upon sensitive caribou habitat. Consult ADF&amp;G prior to issuing an authorization involving a long-term or permanent use.</p> <p>Protect heritage sites.</p>	<p>Mining operations have been conducted on placer deposits.</p> <p>Caribou calving and wintering occur throughout the unit. Moose winter concentrations are present throughout the unit.</p> <p>The AHRS reports heritage sites in or around this unit.</p>
I-04 Mastodon Dome	Mi, Ha 8,002ac	3-4a	<p>Manage unit for its mineral values and resources and for its important caribou habitat.</p> <p>Any mineral development shall, in addition to the management guidelines of the Fish and Wildlife section of Chapter 2, consider impacts upon sensitive caribou habitat and the Ptarmigan Eagle Creek Study Area. Consult ADF&amp;G prior to issuing an authorization involving a long-term or permanent use.</p> <p>Authorizations that may impact RS 2477 routes should ensure access is maintained.</p>	<p>There are many APMAs and mining operations that have been conducted on placer deposits.</p> <p>Caribou calving and wintering occur throughout the unit. Moose winter concentrations are present in the western portion of this unit. A portion of the Ptarmigan Eagle Creek Study Area conducted by ADF&amp;G is within this unit.</p> <p>Multiple RS 2477 Trails are located within this unit and include: (RST 1477) Mastodon Creek - Mastodon Dome - Deadwood Creek Trail (RST 1604) Frying Pan Creek Trail (RST 237) Circle - Fairbanks Trail</p>
I-05 Harrison Fork of Independence Creek	Mi, Ha 752ac	3-4a	<p>Manage unit for its mineral values and resources and for its important caribou habitat.</p> <p>Any mineral development shall, in addition to the management guidelines of the Fish and Wildlife section of Chapter 2, consider impacts upon sensitive caribou habitat. Consult ADF&amp;G prior to issuing an authorization involving a long-term or permanent use.</p>	<p>Many mining operations have been conducted.</p> <p>Caribou calving and wintering occur throughout the unit.</p>

Unit # / Name	Designation/ Acres	Map	Management Intent	Resources and Uses
I-06  Birch Creek Commercial Recreation	Sc 378ac	3-4a	<p>See Chapter 2 requirements for additional guidance for settlement.</p> <p>Manage disposal in this unit with an emphasis on maintaining wildlife habitat and recreational opportunities. Avoid siting projects in caribou calving areas. Consult with ADF&amp;G.</p> <p>Protect heritage sites.</p>	<p>Lands in this unit have been identified as a potential settlement area for disposal through the state land sales program. Commercial settlement may be appropriate to accommodate recreational opportunities.</p> <p>The area is along the Steese Highway and adjacent to the Upper Birch Creek pull-out and is gently sloping northward. Vegetation consists of shrubs with pockets of evergreen and mixed forests.</p> <p>Caribou and moose wintering and caribou calving areas are present. Dispersed recreation and hunting/subsistence occurs within the unit.</p> <p>The AHRS reports heritage sites in or around this unit.</p>
I-07  Bachelor Creek	Rd, Ha 13,867ac	3-4a 3-4b	<p>Manage for recreational values and to protect and maintain habitat values. Protect access corridors into the Steese National Conservation Area. Unit is to be retained in state ownership.</p> <p>DNR shall consult ADF&amp;G and may contact USFWS regarding authorizations involving uses that may impact caribou habitat or sensitive life stages. Authorizations must consider the potential impacts on the habitat values and include general mitigation measures that will avoid, minimize, or mitigate any negative effects.</p> <p>The entire unit is affected by MCO 398.</p> <p>Protect heritage sites.</p>	<p>This area consists of mountainous topography and is associated with Bachelor Creek. Vegetation is primarily shrubland, with wetland and forests along Bachelor Creek.</p> <p>Caribou wintering and calving occurs throughout the unit.</p> <p>This area provides primitive road access to the recreational trails and values of the Steese National Conservation Area.</p> <p>The AHRS reports heritage sites in or around this unit.</p>
I-08  Mount Ryan Remote Settlement	Se 17,196ac	3-4a 3-4b	<p>Land disposal during the planning period is appropriate. See Chapter 2 requirements for additional guidance.</p> <p>Avoid siting projects in caribou calving areas. Consult with ADF&amp;G.</p> <p>Public access on RS 2477 Trails will be maintained.</p> <p>This unit is affected by LLO 30 and 39.</p>	<p>This area was classified Settlement by TBAP in 1986 and there have been a significant number of land disposals throughout the unit, all of a rural recreational type. A project area (ADL 417817) covers the entire unit.</p> <p>Terrain is generally mountainous, with vegetation predominately shrub at higher elevations and evergreen in the valleys.</p> <p>A caribou wintering and calving area is present throughout the unit. Moose winter concentrations occur along the northern edge of the unit.</p> <p>An RS 2477 Trail is located within this unit: (RST 237) Circle - Fairbanks Trail</p>

Unit # / Name	Designation/ Acres	Map	Management Intent	Resources and Uses
I-09 Far Mountain Remote Settlement	Se 11,015ac	3-4a	Land disposal during the planning period is appropriate. See Chapter 2 requirements for additional guidance.  Avoid siting projects in caribou calving areas. Consult with ADF&G.  This unit is affected by MCO 200.	A portion of the unit was classified Private Recreation in 1982 and there have been a few land disposals in the area, all of a rural recreational type. A project area (ADL 417414) covers a portion of the unit.  The terrain consists of rugged mountain passes. Vegetation is generally evergreen, with shrubland increasing at higher elevations.  Caribou wintering and calving areas are present throughout the unit.
I-10 Far Mountain Highlands	Ha 10,831ac	3-4a	Due to the remote nature and terrain limitations of these lands, development is not anticipated.  Avoid siting projects in caribou calving areas. Consult with ADF&G.	Mountainous terrain characterizes this unit. Vegetation is largely evergreen forest with areas of shrubland at the highest elevations.  Caribou calving occurs in the northern half of the unit and wintering occurs in the southern half.
I-11 Crazy Mountains	Ha 161,171ac	3-4a	Manage to protect and maintain wildlife and habitat values. Unit is to be retained in state ownership.  DNR shall consult ADF&G and may contact USFWS regarding authorizations involving uses that may impact crucial wildlife habitat or sensitive life stages. Authorizations must consider the potential impacts on the habitat values and include general mitigation measures that will avoid, minimize, or mitigate any negative effects. Any authorizations that are issued should avoid riparian habitat. Due to the remote nature of these lands, development is not anticipated.  A portion of this unit is affected by MCO 552.  Authorizations that may impact RS 2477 routes should ensure access is maintained.  Protect heritage sites.	Many streams occur through the unit and provide prime habitat area. Winter use areas for caribou and moose are present. Waterfowl and forest bird concentrations are present along stream corridors. There is an anadromous stream in the northeast corner of the unit, Bluff Creek.  Approximately 25 sections of this unit's land are in selection status with the lowest priority level. It is considered unlikely, given the selection priority assigned, that all of these areas will be conveyed to the state. The selection occurs in township F011N016E. The remaining land is state owned.  RS 2477 Trails are located within this unit and include: (RST 467) Central - Circle Pack Trail (RST 237) Circle - Fairbanks Trail  The AHRS reports heritage sites in or around this unit.

Unit # / Name	Designation/ Acres	Map	Management Intent	Resources and Uses
I-12  Albert Creek	Rm 19,801ac	3-4a	<p>Authorizations that may impact RS 2477 routes should ensure access is maintained.</p> <p>Portions of this unit are affected by MCO 201.</p> <p>Protect heritage sites.</p>	<p>Lowland terrain characterizes this unit with increasing elevations in the northern blocks of the parcel. Vegetation is largely evergreen forest. Smaller areas of wetlands, deciduous forest, and shrubland occur along creeks and at higher elevations. There is a public easement (ADL 409468) for access to an existing trail.</p> <p>Caribou winter use areas are present throughout the unit. Moose winter use areas occur along the northern and southern edges of the unit.</p> <p>RS 2477 Trails are located within this unit and include: (RST 467) Central - Circle Pack Trail (RST 237) Circle - Fairbanks Trail</p> <p>The AHRS reports heritage sites in or around this unit.</p>
I-13  Crooked Creek	Mi 5,082ac	3-4a	<p>Manage unit for its mineral values and resources and for its caribou and moose habitat.</p> <p>Consideration of the impacts upon hydrologic values associated with Crooked Creek is very important, especially since the location of the mining claims and reported mineral deposits are co-located with the waterbodies within this area.</p> <p>Authorizations that may impact RS 2477 routes should ensure access is maintained.</p> <p>Protect heritage sites.</p>	<p>There are many APMA's and mining operations have been conducted on placer deposits. This unit contains mainly lowland topography, with increasing elevation in section 31. Vegetation varies and includes deciduous, evergreen, and mixed forests along with mixed shrubs and some wetlands.</p> <p>Moose and caribou wintering is prevalent in this area.</p> <p>A small sliver of this unit's land is in selection status with a high priority level. Selections occur in the following sections: F009N013E protracted sections 31 and 32. The remaining land is state owned.</p> <p>An RS 2477 Trail is located within this unit: (RST 237) Circle - Fairbanks Trail.</p> <p>The AHRS reports heritage sites in or around this unit.</p>

Unit # / Name	Designation/ Acres	Map	Management Intent	Resources and Uses
I-14  Central; Albert Creek Settlement	Se 17,014ac	3-4a	<p>Land disposal during the planning period is appropriate. See Chapter 2 requirements for additional guidance.</p> <p>Authorizations that may impact RS 2477 routes should ensure access is maintained.</p> <p>Portions of this unit are affected by MCO 201, 204, 296, 554, 582, 577, and 780.</p> <p>Protect heritage sites.</p>	<p>Parcels in this unit were previously classified Settlement and Private Recreation and there have been a significant number of land disposals throughout the unit. Multiple land sale project areas (ADL 417478, 419850, and 419354) cover the unit. A lease (ADL 419381) for the museum in Central is located in the southern portion of the unit, along the Steese Highway. There is a public easement (ADL 409468) for access to an existing trail in the southcentral portions of the unit.</p> <p>Terrain is generally flat, with some hills in the eastern subunit. Vegetation is predominately evergreen forest with isolated areas of shrub and wetlands.</p> <p>Caribou and moose wintering is present throughout the unit.</p> <p>Approximately 2 sections of this unit's land are in selection status with a medium-high priority level. It is somewhat likely that all or some of these areas will be conveyed to the state. Selections occur in the following sections: F009N016E protracted sections 4, 5, 8, and 17 and F009N014E protracted sections of 29 and 32. The remaining land is state owned.</p> <p>RS 2477 Trails are located within this unit and include: (RST 467) Central - Circle Pack Trail (RST 237) Circle - Fairbanks Trail (RST 1607) Leech Cutoff Trail</p> <p>The AHRS reports heritage sites in or around this unit.</p>



Unit # / Name	Designation/ Acres	Map	Management Intent	Resources and Uses
I-15  Boulder Creek, Ikheenjik Wetlands	Rm 136,025ac	3-4a	<p>This unit provides for a variety of uses. Manage the unit to continue to provide opportunities for public access and for the protection of wildlife habitat.</p> <p>A portion of this unit is affected by MCO 201 and 577.</p> <p>Authorizations that may impact RS 2477 routes should ensure access is maintained.</p> <p>Protect heritage sites.</p>	<p>Terrain is mixed, with lowland wetlands throughout the eastern portion of the unit. Increasing elevations in the western portions become mountainous with shrublands and mixed forests.</p> <p>Moose wintering areas occur in the northern and eastern edges of this unit. Caribou winter use areas occur throughout, with calving in the southwestern corner of the unit. Waterfowl concentrations are present in the eastern half of the unit.</p> <p>Some APMA's and mining claims exist along the Leech Cutoff Trail and the arterial roads off the Steese Highway. There is a public easement (ADL 409468) for access to an existing trail in the southcentral portions of the unit. A lease (ADL 4415290) for a communication system is located in F007N015E section 26. A restricted use authorization (ADL 421149) is in effect for the lease site described due to lead and diesel contamination. A potential hazard site (ADL 420432) for the unauthorized Central Landfill is located off the Steese Highway.</p> <p>Approximately eight sections of this unit's land is in selection status with a medium priority level along the Ikheenjik River (Birch Creek) and high priority in all other areas of selection. Selections occur in the following townships: F008N017E, F007N017E. The remaining land is state owned.</p> <p>Many RS 2477 Trails are located within this unit and include:  (RST 1607) Leech Cutoff Trail  (RST 1800) Circle Hot Springs - Medicine Lake Trail  (RST 823) Graveyard Creek - Cabins Trail  (RST 810) Boulder Creek Trail #2  (RST 1477) Mastodon Creek - Mastodon Dome - Deadwood Creek Trail  (RST 618) Central - Deadwood Creek Trail  (RST 8) Harrison Creek - Portage Creek Trail  (RST 230) Bielenberg Trail  (RST 237) Circle - Fairbanks Trail</p> <p>The AHRS reports heritage sites in or around this unit.</p>

Unit # / Name	Designation/ Acres	Map	Management Intent	Resources and Uses
I-16 North Fork Harrison Creek	Mi, Ha 1,890ac	3-4a	<p>Manage unit for its mineral values and resources and for its important caribou habitat.</p> <p>Any mineral development shall, in addition to the management guidelines of the Fish and Wildlife section of Chapter 2, consider impacts upon sensitive caribou habitat. Consult ADF&amp;G prior to issuing an authorization involving a long-term or permanent use.</p> <p>Authorizations that may impact RS 2477 routes should ensure access is maintained.</p>	<p>There are many APMAs and mining operations have been conducted on placer deposits.</p> <p>Caribou calving and wintering occur throughout the unit.</p> <p>Multiple RS 2477 Trails are located within this unit and include: (RST 1477) Mastodon Creek - Mastodon Dome - Deadwood Creek Trail (RST 8) Harrison Creek - Portage Creek Trail</p>
I-17 Ketchum Dome, Deadwood Creek	Mi, Ha 36,815ac	3-4a	<p>Manage unit for its mineral values and resources and for its important caribou habitat.</p> <p>Any mineral development shall, in addition to the management guidelines of the Fish and Wildlife section of Chapter 2, consider impacts upon sensitive caribou habitat. Consult ADF&amp;G prior to issuing an authorization involving a long-term or permanent use.</p> <p>Consideration of the impacts upon hydrologic values associated with the numerous creeks and wetlands located throughout this unit is very important, especially since the location of the mining claims and reported mineral deposits are co-located with the waterbodies within this area.</p> <p>Authorizations that may impact RS 2477 routes should ensure access is maintained.</p> <p>Protect heritage sites.</p>	<p>There are many APMAs and mining operations. The terrain consists of rugged mountains. Vegetation is largely shrub, with evergreen, deciduous, and mixed forests in the valleys and along streams.</p> <p>Caribou wintering is prevalent in this area, with calving areas in the western portion of the unit.</p> <p>Many slivers of selected land are present in this unit and are a high priority status. Selections occur in the following townships: F007N014E, F008N014E, F007N015E, and F008N015E. The remaining land is state owned.</p> <p>Multiple RS 2477 Trails are located within this unit and include: (RST 810) Boulder Creek Trail #2 (RST 618) Central - Deadwood Creek Trail (RST 8) Harrison Creek - Portage Creek Trail</p> <p>The AHRS reports heritage sites in or around this unit.</p>

Unit # / Name	Designation/ Acres	Map	Management Intent	Resources and Uses
I-18  Circle Hot Springs Settlement	Se 5,790ac	3-4a	<p>Land disposal during the planning period is appropriate. See Chapter 2 requirements for additional guidance.</p> <p>Authorizations that may impact RS 2477 routes should ensure access is maintained.</p> <p>Portions of this unit are affected by MCO 780 and MO 1165 and 1042.</p> <p>Protect heritage sites.</p>	<p>Parcels in this unit have been classified as open-to-entry and homesite entry. There have been a significant number of land disposals. There are public easements (ADL 415858 and ADL 411998) for meteorological instruments and avigation and hazards, respectively, located in dispersed, isolated instances in the unit.</p> <p>Terrain is generally flat, increasing in elevation in the southern portion of the unit. Vegetation predominately evergreen and deciduous forest, with some areas of shrub and wetlands at lowest elevations.</p> <p>A small selection area occurs in the southwest corner of the unit, F008N015E30.</p> <p>Caribou wintering is present throughout the unit.</p> <p>RS 2477 Trails are located within this unit and include: (RST 1607) Leech Cutoff Trail (RST 1800) Circle Hot Springs - Medicine Lake Trail (RST 230) Bielenberg Trail</p> <p>The AHRS reports heritage sites in or around this unit.</p>
I-19  Portage Creek Forest	F 20,959ac	3-4a	<p>Manage unit for its forestry values. Management emphasis will be focused on maintaining the natural character of the unit, while providing opportunities for personal harvest, and while forest management and maintaining habitat, wildlife, and recreational values.</p> <p>See Chapter 2 for specific management guidelines. Specifically, the Forestry, Fish and Wildlife Habitat and Shorelands and Stream Corridor sections.</p>	<p>Mountainous terrain characterizes this unit, with decreasing elevation to the north. Vegetation is largely a mix of deciduous and evergreen forest with a few pockets of shrubland.</p> <p>Caribou wintering occurs throughout the unit.</p> <p>Some APMA's and mining claims exist along Portage Creek Road.</p> <p>A couple small slivers of this unit's land are in selection status with a high priority level. The selection occurs in F007N015E Sections 2 and 4. The remaining land is state owned.</p> <p>An RS 2477 Trail is located within this unit: (RST 230) Bielenberg Trail</p>

Unit # / Name	Designation/ Acres	Map	Management Intent	Resources and Uses
I-20 Medicine Lake Settlement	Se 7,513ac	3-4a	<p>Land disposal during the planning period is appropriate. See Chapter 2 requirements for additional guidance.</p> <p>Manage unit with an emphasis on maintaining wildlife habitat and recreational opportunities.</p> <p>Authorizations that may impact RS 2477 routes should ensure access is maintained.</p> <p>Protect heritage sites.</p>	<p>Lands in this unit have been identified as a potential settlement area for disposal through the state land sales program.</p> <p>The area is near Portage Creek Road and surrounds Medicine Lake. Terrain is flat, consisting almost entirely of wetlands. Mixed forests are present along the southern outskirts of the unit and in the complex of waterbodies north of Medicine Lake.</p> <p>Caribou and moose wintering areas are present. An eagle nest occurs within the unit.</p> <p>Approximately 6 sections of this unit's land are in selection status with the highest priority level. The selection occurs in township F008N016E. The remaining land is state owned.</p> <p>RS 2477 Trails are located within this unit and include: (RST 1800) Circle Hot Springs - Medicine Lake Trail (RST 1607) Leech Cutoff Trail (RST 230) Bielenberg Trail</p> <p>The AHRS reports heritage sites in or around this unit.</p>
I-21 Yukon River Wetlands	Ha 32,380ac	3-4a	<p>Manage to protect and maintain wildlife and habitat values. Unit is to be retained in state ownership.</p> <p>DNR shall consult ADF&amp;G and may contact USFWS regarding authorizations involving uses that may impact crucial wildlife habitat or sensitive life stages. Authorizations must consider the potential impacts on the habitat values and include general mitigation measures that will avoid, minimize, or mitigate any negative effects. Due to the remote nature of these lands and presence of wetlands, development is not anticipated.</p> <p>Authorizations that may impact RS 2477 routes should ensure access is maintained.</p>	<p>This unit is characterized by low-lying wetlands, which are located south of the Yukon River. Vegetation consists primarily of woody wetlands with pockets of shrubland.</p> <p>Winter use areas for caribou and moose are present. Very high concentrations of waterfowl are present throughout the unit.</p> <p>Approximately three sections of this unit's land are in selection status with a medium or low priority level. Selections occur in the following sections: F009N018E 27 and 28, F010N017E 36. The remaining land is state owned.</p> <p>An RS 2477 Trail is located within this unit: (RST 67) Eagle - Circle Mail Trail</p>

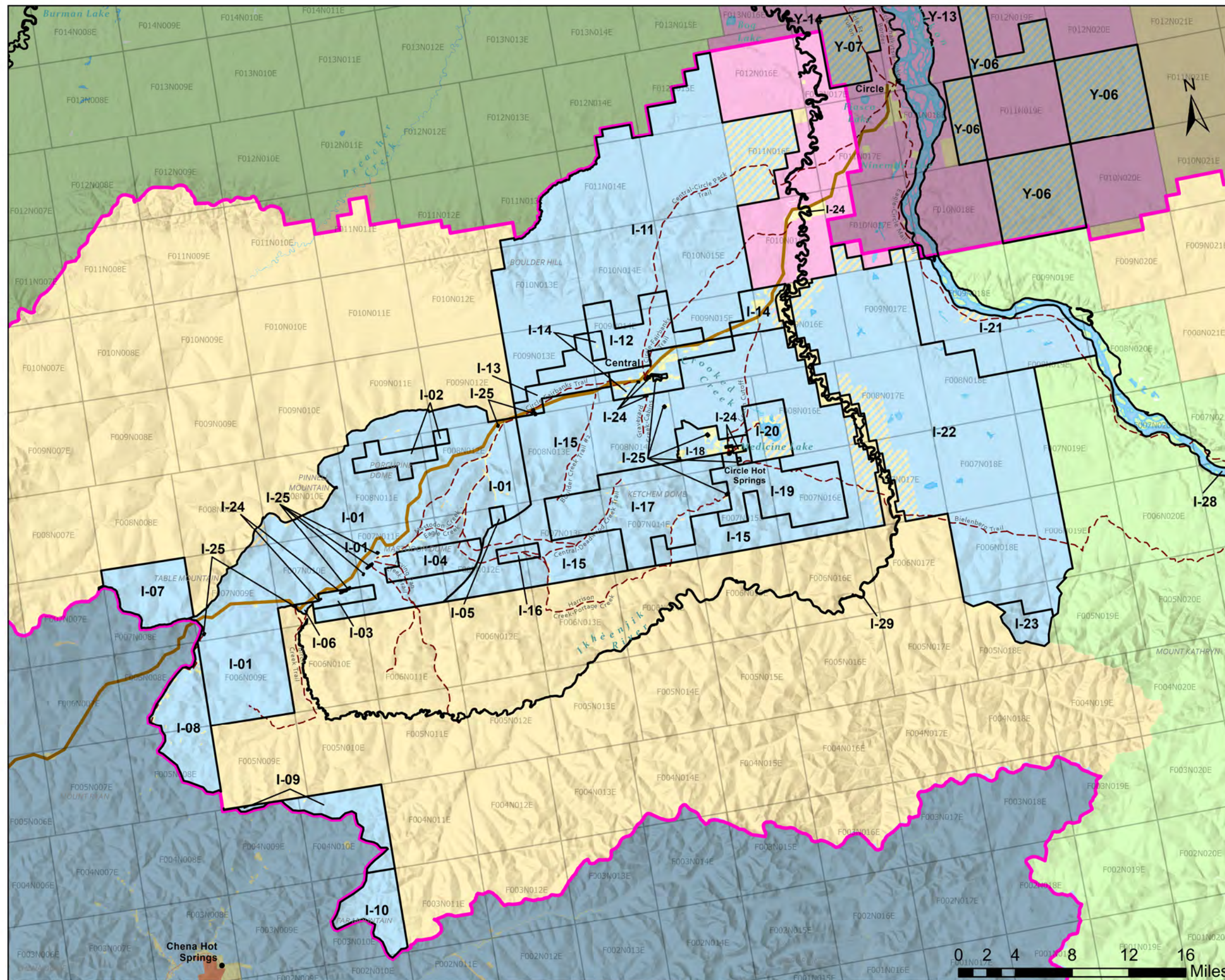
Unit # / Name	Designation/ Acres	Map	Management Intent	Resources and Uses
I-22  Yukon-Birch Creek Interfluve	Rm 156,136ac	3-4a	<p>Due to the remote nature of these lands, development is not anticipated.</p> <p>Authorizations that may impact RS 2477 routes should ensure access is maintained.</p> <p>Protect heritage sites.</p>	<p>Lowland terrain characterizes most of the landscape. Areas of high elevation include a north-south running plateau in the northeastern portion of the unit and mountainous terrain in the southernmost portions of the unit. Vegetation on and along the southern side of the plateau is a mix of deciduous and evergreen forest, while wetland vegetation is located within the complex of lakes and ponds and north of the plateau. Shrubland is present at the highest elevations.</p> <p>Caribou and moose wintering areas are present, as well as high concentrations of waterfowl.</p> <p>Approximately 26 sections of this unit's land are in selection status, mostly occurring along the Ikheenjik River (Birch Creek) with a medium priority level. Selections occur in the following townships: F007N017E, F010N017E, F09N016E, and F008N17E. The remaining land is state owned.</p> <p>An RS 2477 Trail is located within this unit: (RST 230) Bielenberg Trail.</p> <p>The AHRS reports heritage sites in or around this unit.</p>
I-23  Thanksgiving Creek Source	Ha 5,150ac	3-4a	<p>Manage to protect and maintain wildlife and habitat values. Unit is to be retained in state ownership.</p> <p>DNR shall consult ADF&amp;G and may contact USFWS regarding authorizations involving uses that may impact caribou habitat or sensitive life stages. Authorizations must consider the potential impacts on the habitat values and include general mitigation measures that will avoid, minimize, or mitigate any negative effects.</p>	<p>The shrub-covered, mountainous topography of the unit provides habitat for caribou wintering and calving areas. Dall sheep, as well as most furbearers and small game are also present.</p>

Unit # / Name	Designation/ Acres	Map	Management Intent	Resources and Uses
I-24  Interior Highlands Region Public Facilities	Pr 413ac	3-4a	<p>This unit consists of multiple parcels under management agreements with other agencies. Some of the parcels are under management agreements for the Department of Transportation and Public Facilities, including management for rights-of way and airports. Land should be managed according to FAA and DOT/PF operational requirements and with the management plan for the airport.</p> <p>LSH 36 is included in this unit and contains a portion of a landing strip and a highway maintenance facility.</p> <p>A 10-acre parcel is co-managed by ADF&amp;G, BLM, and DOT for the Lower Birch Creek Wayside. This boat launch should be managed according to ADF&amp;G for recreational values and public access. Disposal of the parcel is prohibited.</p> <p>Portions of this unit are affected by MCO 428.</p> <p>Protect heritage sites.</p>	<p>The topography consists of low-lying terrain, with sparse mixed forest and small areas of wetlands. There is a public easement (ADL 409468) for access to an existing trail.</p> <p>Moose and caribou winter concentrations occur in most parcels. Caribou calving is present in the two southernmost parcels.</p> <p>Management agreements associated with the parcels in this unit include: ADL 418541, ADL 403720, ADL 411561, ADL 24662, ADL 403861, ADL 418694, and ADL 418693.</p> <p>A parcel contains the Central Cemetery.</p> <p>The AHRS reports heritage sites in or around this unit.</p>
I-25  Interior Highlands Region Material Sites	Ma, Ha 388ac	3-4a	<p>Manage unit for its material values and resources consistent with the authorization issued by DNR. DNR shall consult ADF&amp;G regarding authorizations involving uses that may impact moose or caribou habitat.</p> <p>Lands within the easements shall be retained in state ownership.</p> <p>A portion of this unit is affected by MO 1165 and MCO 428.</p> <p>Authorizations that may impact RS 2477 routes should ensure access is maintained.</p> <p>Protect heritage sites.</p>	<p>This unit consists of multiple parcels located on state-owned and selected uplands and shorelands containing material sources within or near the Steese Highway and arterial roadways. Some sites may be open and active, or they may be closed and inactive. Usage at these sites varies by demand. This unit is primarily used for gravel and construction material extraction. There is potential for further development of these resources.</p> <p>There are public easements (ADL 412443 and ADL 409468) for access for DOT/PF and for an existing trail.</p> <p>Moose winter concentrations are present in the parcels along the Steese Highway. Caribou winter concentrations occur in most parcels. Caribou calving areas are present in the western parcels.</p> <p>Small slivers of this unit's land are in selection status with a high priority level.</p> <p>The AHRS reports heritage sites in or around this unit.</p> <p>Multiple RS 2477 Trails are located within this unit and include: (RST 8) Harrison Creek - Portage Creek (RST 1604) Frying Pan Creek Trail (RST 237) Circle - Fairbanks Trail</p>

Unit # / Name	Designation/ Acres	Map	Management Intent	Resources and Uses
I-26 Grayling Fork, Canadian Border	Rm 15,227ac	3-4b	Due to the remote nature of these lands, development is not anticipated.  Authorizations that may impact RS 2477 routes should ensure access is maintained.	Hilly terrain characterizes this unit. Vegetation is largely a mix of deciduous and evergreen forest, with shrub cover in the valleys.  High concentrations of waterfowl are present throughout the unit.  The entirety of this unit's land is in selection status with no priority level. It is considered unlikely this parcel will be conveyed to the state.  An RS 2477 Trail is located within this unit: (RST 466) Nation River - Rampart House Trail
I-27 Kandik River Uplands	Rm 23,001ac	3-4b	Due to the remote nature of these lands, development is not anticipated.	Hilly and mountainous terrain characterizes this unit. Vegetation is variable, including deciduous and evergreen forests at higher elevations and shrub and wetlands along the Kandik River and valleys.  High concentrations of waterfowl are present throughout the unit.
I-28 Upper Yukon River	Ha, Wr, Rd 57,136ac	3-4a	Manage this unit for the protection of habitat, recreation, and hydrologic values. Emphasis should be on preserving water quality, sensitive habitat, and recreational use of the river.  Retain land in public ownership.  Maintain public access on trails and easements that provide access to and across the river.  Protect heritage sites.	This management unit consists of the portions of the Yukon River as measured from bank-to-bank from ordinary high water mark which are located within the Interior Highlands region. Besides the water column itself, islands and exposed gravel bars are also included in this unit. The Yukon River is a navigable waterbody. Cultural resources are present in this unit.  The river has abundant habitat resources. Eagles nest in various locations along the river. The unit is within an Important Bird Area (IBA), Yukon-Charley Rivers. Moose calving, rutting, and winter concentrations occur throughout the unit. Caribou wintering occurs throughout. The river is anadromous, supporting Chinook and fall chum salmon. In addition, slimy sculpin, Arctic grayling, burbot, round whitefish, longnose sucker, sheefish, and northern pike are present.  The land surrounding the river is owned by multiple property owners including state, native, federal, and privately owned parcels.  The AHRS reports heritage sites in or around this unit.

Unit # / Name	Designation/ Acres	Map	Management Intent	Resources and Uses
I-29 Upper Ikheenjik River (Birch Creek)	Ha, Wr, Rd 4,809ac	3-4a	<p>Manage this unit for the protection of habitat, recreation, and hydrologic values. Emphasis should be on preserving water quality, sensitive habitat, and recreational use of the river.</p> <p>Retain land in public ownership.</p> <p>Maintain public access on trails and easements that provide access to and across the river.</p> <p>Protect heritage sites.</p>	<p>This management unit consists of the portions of the Ikheenjik River (Birch Creek) as measured from bank-to-bank from ordinary high water mark which are located within the Interior Highlands region. Besides the water column itself, islands and exposed gravel bars are also included in this unit. The Ikheenjik River is a navigable waterbody.</p> <p>The river has abundant habitat resources. Moose winter concentrations occur in the lower portion of the river. Caribou calving and wintering areas are present upstream. The river is anadromous, supporting spawning populations of Chinook and chum salmon. Also present are Arctic grayling, burbot, slimy sculpin, longnose sucker, and round whitefish. Birch Creek community members harvest bear and moose within the unit.</p> <p>The land surrounding the river is owned by multiple property owners including native, federal, and privately owned parcels.</p> <p>The AHRS reports heritage sites in or around this unit.</p>
I-30 Upper Beaver Creek	Ha, Wr, Rd 4,262ac	3-4b	<p>Manage this unit for the protection of habitat, recreation, and hydrologic values. Emphasis should be on preserving water quality, sensitive habitat, and recreational use of the river.</p> <p>Retain land in public ownership.</p> <p>Maintain public access on trails and easements that provide access to and across the river.</p> <p>DMLW Water Resources Section should be consulted prior to development to determine impacts to the reserved water resources in this unit. See Appendix F for more information.</p> <p>Protect heritage sites.</p>	<p>This management unit consists of the portions of Beaver Creek as measured from bank-to-bank from ordinary high water mark which are located within the Interior Highlands region. Besides the water column itself, islands and exposed gravel bars are also included in this unit. Beaver Creek is a navigable waterbody. A variety of motorized and non-motorized boats are used for travel on Beaver Creek. A reservation of water exists for Beaver Creek within this unit.</p> <p>The river has abundant habitat resources. Moose and caribou winter concentrations occur throughout the unit. Dall sheep occur in the mountainous portions of the unit. The river is anadromous, supporting spawning populations of Chinook and chum salmon. Also present are slimy sculpin, burbot, and Arctic grayling.</p> <p>The land surrounding the river is owned by the Bureau of Land Management.</p> <p>The AHRS reports heritage sites in or around this unit.</p>





# Northeast Alaska Area Plan Map 3-4a

## Interior Highlands Region Planning Units and Designations

- Interior Highlands Region
- Planning Units
- Steese Highway
- RS 2477
- State Land
- State Selected Land
- Private or Other Land
- Native Land
- Native Selected Land
- BLM Land
- NPS/USFWS

## Unit Designations

I-01 Hv, Ha, Rd	I-15 Rm
I-02 Mi, Ha	I-16 Mi, Ha
I-03 Mi, Ha	I-17 Mi, Ha
I-04 Mi, Ha	I-18 Se
I-05 Mi, Ha	I-19 F
I-06 Sc	I-20 Se
I-07 Rd, Ha	I-21 Ha
I-08 Se	I-22 Rm
I-09 Se	I-23 Ha
I-10 Ha	I-24 Pr
I-11 Ha	I-25 Ma, Ha
I-12 Rm	I-28 Ha, Wr, Rd
I-13 Mi	I-29 Ha, Wr, Rd
I-14 Se	



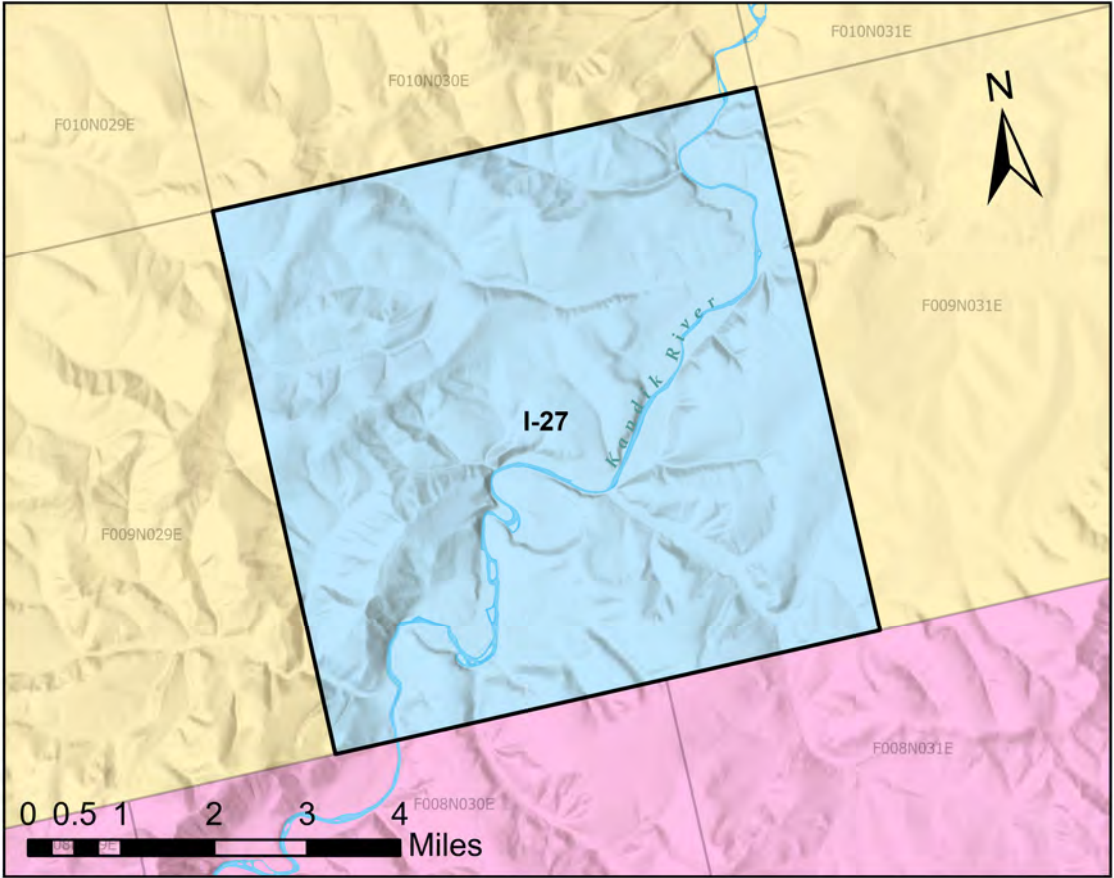
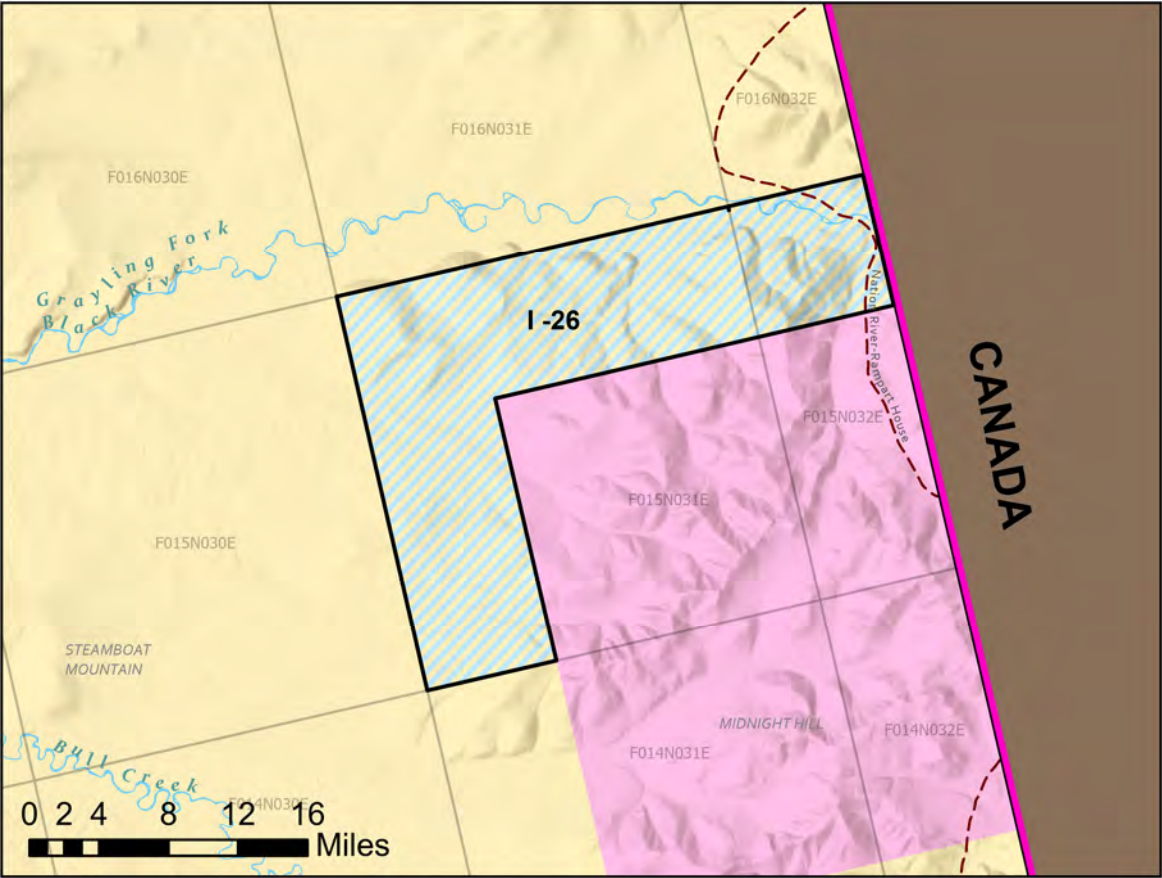
Land use designations only apply to land owned by the State Department of Natural Resources, as indicated by the management units on this map. There are some small private parcels contained within these units but the designation does not apply to these non-state lands.

This map is for graphic representation only and is intended to be used only as a guide. Areas outside of the planning area and Interior Highlands Region are shaded out. Colors may appear darker.

Created: August 2025  
DS, DNR, DMLW, RADS  
Projected Coordinate System: NAD 1983  
UTM Zone 6 North







Northeast Alaska Area Plan  
Map 3-4b

Interior Highlands Region  
Planning Units and  
Designations

- Interior Highlands Region
- Planning Units
- Steese Highway
- RS 2477
- State Land
- State Selected Land
- Private or Other Land
- Native Land
- Native Selected Land
- BLM Land
- NPS/USFWS

Unit Designations

- I-07 Ha, Rd
- I-08 Se
- I-26 Rm
- I-27 Rm
- I-30 Ha, Wr, Rd



Land use designations only apply to land owned by the State Department of Natural Resources, as indicated by the management units on this map. There are some small private parcels contained within these units but the designation does not apply to these non-state lands.

This map is for graphic representation only and is intended to be used only as a guide. Areas outside of the planning area and Interior Highlands Region are shaded out. Colors may appear darker.

Created: August 2025  
DS, DNR, DMLW, RADS  
Projected Coordinate System: NAD 1983  
UTM Zone 6 North

