

Dalton Corridor Region (D)

The Dalton Corridor Region encompasses an area of 1,607,448 acres and is situated on the western edge of the planning area. The region includes the Dalton Highway Corridor LDA and additional lands to the east. The additional lands are not part of the LDA. The region includes about 162 road miles of the Dalton Highway (MP 68-230) and the communities of Wiseman and Coldfoot.

The Wiseman/Coldfoot area has been host to many mining operations throughout the past century, causing boom and bust population patterns. Over the past two decades, the area has increased in population. Most infrastructure was built in the early to mid-1900s and use has discontinued over time, with the exception of the Dalton Highway.

The majority of this region is comprised of the southern portion of the James Dalton Highway legislatively designated area (LDA). This legislation established a 5-mile corridor on both sides of the highway ROW and limited activities and access within this area. For example, there are restrictions on disposing of state land, mining, hunting, and use of motorized vehicles. Refer to AS 19.40 for more information.

The Dalton Corridor is hilly or mountainous throughout with rugged mountain passes in the north and includes tundra, lakes, rivers, and streams, underlain with continuous and discontinuous permafrost.

Distribution and Characteristics

Land ownership is mixed throughout this region and includes state land, private land, Native land, and federal land. State land and state selected land are concentrated within and adjacent to the Dalton Highway Corridor LDA and make up 7,647 acres and 1,147,148 acres respectively. Private land, derived from land disposals and Native allotments comprise 529 acres. Native owned land is located in one area near Wiehl Mountain; this land accounts for 7,682 acres. The remainder of the land is federally owned, 1,588,626 acres.

Access, Resources, and Uses of State Land

Access to this region is primarily by the Dalton Highway. Within the region, access is with snowmachines in the winter and ATVs and boats in the summer. The James Dalton Highway legislatively designated area (LDA) includes significant restrictions on motorized use. The Alyeska Pipeline ROW for TAPS passes through the region, as well as other hydrocarbon transportation ROWs.

There are abundant mineral and wildlife resources. Caribou, bears, Dall sheep, and salmon have important habitat areas in the region. Residents of Stevens Village, Wiseman, and Coldfoot use the region for hunting, fishing, and general subsistence activities. There are mineral occurrences concentrated around Coldfoot, Wiseman, and the South Fork of the Koyukuk River that include gold, silver, and antimony. Recreation occurs in the area, especially along the highway corridor.

Management Planning Constraints and Considerations

Management intent identified in the 1998 Dalton Highway Master Plan was considered for applicable units within this region. The James Dalton Highway LDA is present throughout most of this region. The LDA is managed under AS 19.40. This section of statute requires that state-owned land within five miles of the Dalton Highway right-of-way may not be disposed of, with exceptions. This statute also states that off-road vehicles are prohibited in the highway corridor, with some exceptions. Public Land Order 5150 is present throughout most of the region.

Management Summary

State land will be managed consistent with its designation(s), as specifically articulated through management intent found in the Resource Allocation Table in Chapter 3 and the applicable goals, objectives, and guidelines found in Chapter 2. Some lands have one designation while other lands are co-designated. The table below provides a quick reference of the designations and co-designations used in this region and their acreages.

Designation or Co-Designations	Acreage
Transportation Corridor / Habitat / Public Recreation-Dispersed	914,612
Habitat / Harvest	139,989
Settlement Commercial / Transportation Corridor	6,355
Resource Management	91,127
Public Facilities-Retain	2,318
Materials / Habitat	919

Resource Allocation Table – Dalton Corridor Region

Unit # / Name	Designation/ Acres	Map	Management Intent	Resources and Uses
D-01 Dalton Highway Corridor	Tc, Ha, Rd 914,612ac	3-2	<p>Manage the unit as a utility and transportation corridor to facilitate transportation of oil and gas resources from the North Slope to facilities in other areas of the state and to support hunting, fishing, gathering, and recreation opportunities.</p> <p>Minimize impacts to fish and wildlife habitat values and harvest opportunities. Decisions related to development shall consider potential impacts on the habitat and harvest values and include stipulations/conditions/measures that will avoid, minimize, or mitigate potential negative effects.</p> <p>DNR shall consult ADF&G regarding authorizations involving uses that may impact brown bear, Dall sheep concentration areas, mineral licks, and anadromous waterbodies. DNR may consult BLM for authorizations that involve uses that could impact Dall sheep critical environmental concern areas.</p> <p>Lands within the proposed AKLNG and ASAP rights-of-way and other lands with infrastructure that is critical for oil and gas development, maintenance, or operations shall be retained in state ownership.</p> <p>Provide continuity in existing transportation and pipeline operations, and for future linear projects consistent with public and industrial needs. Maintain opportunities for subsistence. Under AS 19.40.200, lands are only available for disposal if it is for a public utility, necessary for oil or gas leasing and exploration, or for a state lease or materials sale related to oil, highway maintenance, or airports. Additionally, AS 19.40.210 prohibits off-road vehicles with some exceptions.</p> <p>DMLW Water Resources Section should be consulted prior to development to determine impacts to the reserved water resources in this unit. See Appendix F for more information.</p> <p>The unit is affected by MO 1162A01, MO 1162A03, MO 1118, MO 1045, MO 1147, and LLO 32.</p> <p>Authorizations that may impact RS 2477 routes should ensure access is maintained.</p> <p>Protect heritage sites.</p>	<p>This unit is comprised of state-owned, state-selected, and top-filed lands, shorelands, and waters within the Dalton Highway Corridor LDA and parcels extending to the western edge of the planning boundary. The unit roughly conforms to a 5-mile buffer on either side of the center line of the highway. These lands are the most accessible and heavily used by residents and visitors to this area. The terrain is hilly and mountainous throughout with rugged mountain passes in the north. Vegetation in the southern subunit is generally evergreen with wetlands in the stream corridors. The northern areas of the unit are dominated by shrubland.</p> <p>Many leases for pipeline ROWs exist in this unit. These leases include the Alyeska Pipeline ROW (ADL 63574), Alaska Gasline ROW for the mainline and Alaska Stand Alone Pipeline (ASAP) (ADL 418997 and ADL 421297), and the Point Thomson Export Pipeline ROW (ADL 418975). Other authorized linear projects may occur in the future.</p> <p>Most of the unit is within existing Public Land Order 5150 (PLO 5150). Lands within PLO 5150 are federal public lands managed by BLM and were top-filed by the State as a future selection application consistent with provisions of ANILCA. The top-filed lands within PLO 5150 are the highest priority selections in the state.</p> <p>Potential hazardous sites (ADL 418207, ADL 418208, ADL 418209, ADL 418210, and ADL 418211) are associated with Alyeska Pipeline spills. A private easement (ADL 418713) for the Alyeska Pipeline ROW is near the Prospect Creek airport.</p> <p>Caribou are present throughout the unit. The southernmost portions of the unit provide a connectivity corridor between Kanuti and Yukon Flats National Wildlife Refuges. Brown bear spring and berry concentration areas are along an approximately one-mile buffer of Middle Fork Koyukuk River, Hammond River, and Dietrich River. Dall sheep are present at high elevations in the northern half of the unit, as are lambing areas and mineral licks. Snowden Mountain, Poss Mountain, Nugget Creek, and Midnight Dome/Kalhabuk areas of critical environmental concern identified by BLM for Dall sheep habitat, mineral licks, and lambing occur in this unit. The Middle Fork and South Fork Koyukuk, Hammond, Ray, Bettles, and Dietrich Rivers, and Wiseman, Minnie, Marion, and Slate Creeks have anadromous fish, including spawning populations of Chinook, chum, and coho salmon. The Middle Fork Koyukuk River drainage provides habitat for other species such as Arctic grayling, longnose sucker, burbot, slimy sculpin, Dolly</p>

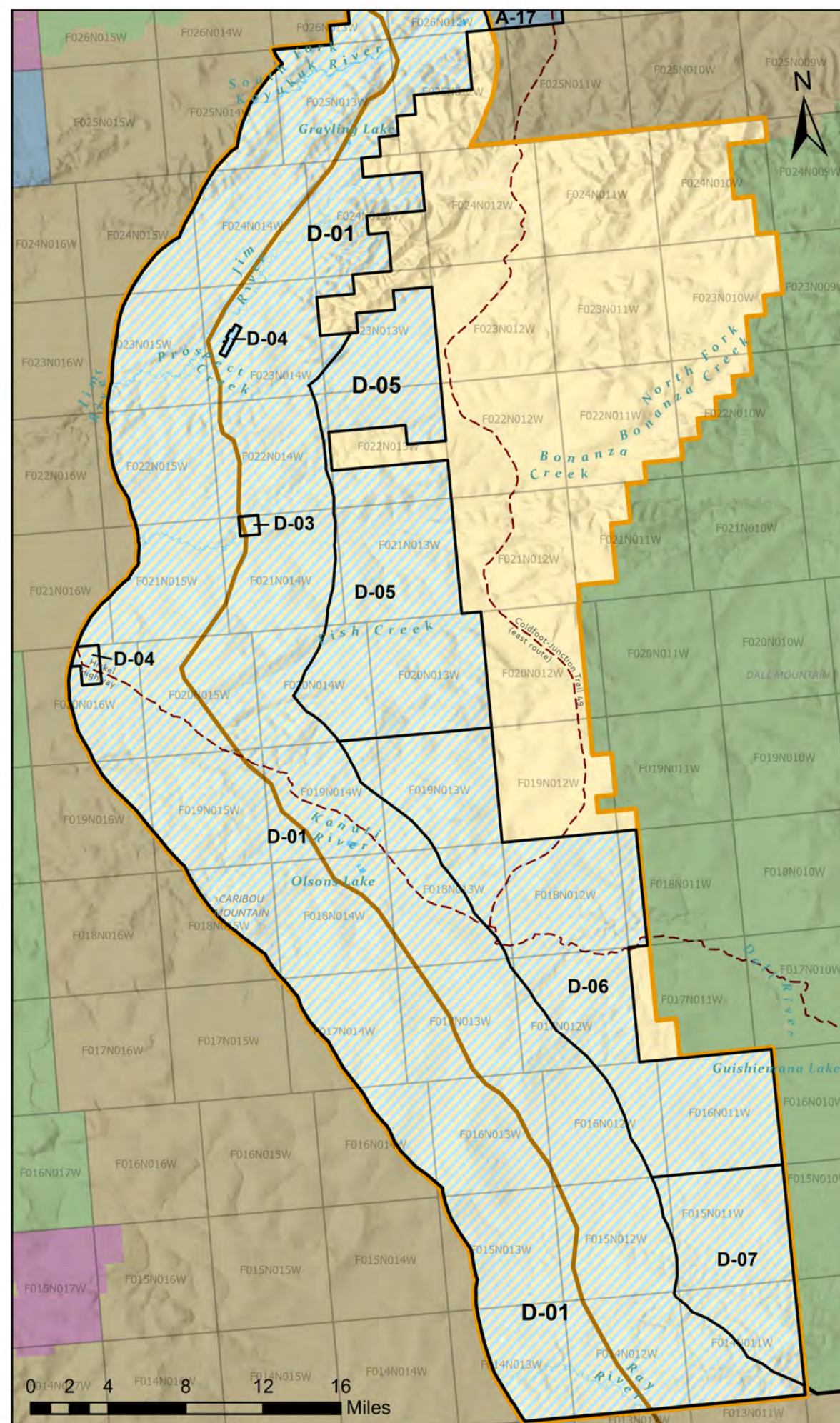
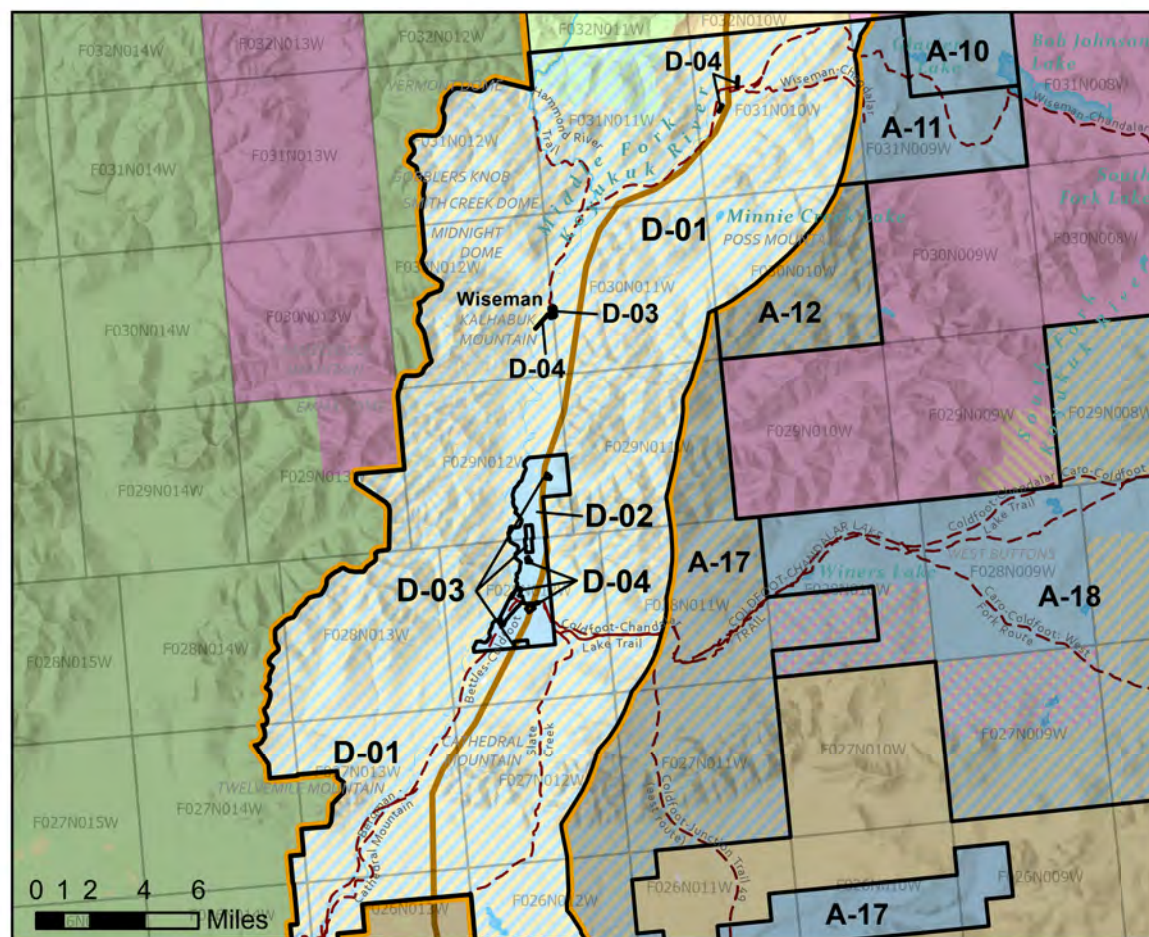
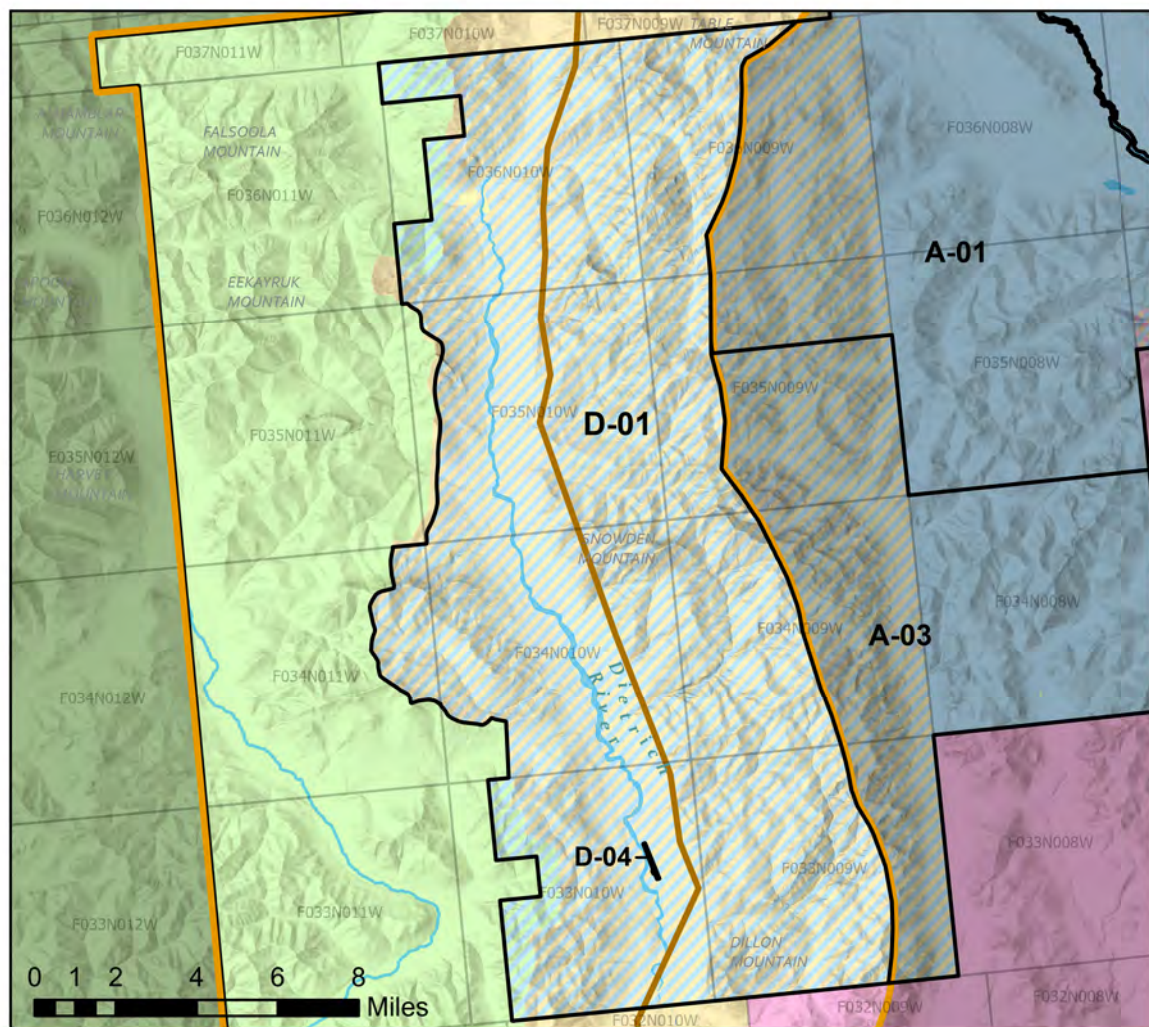
Unit # / Name	Designation/ Acres	Map	Management Intent	Resources and Uses
				<p>Varden, northern pike, and sheefish. The southernmost areas of the unit contain important areas for Stevens Village subsistence harvest of black bear and furbearers. A reservation of water exists for the Middle Fork Koyukuk River within this unit.</p> <p>There are mineral occurrences concentrated around Coldfoot, Wiseman, and the South Fork of the Koyukuk River. The main commodities include gold, silver, and antimony. DGGs via SR 37 recognized the Tramway Bar coal field as bituminous coal beds of mineable thickness - Minimum 14 in.</p> <p>Geothermal springs exist in the southernmost areas of this unit.</p> <p>Recreation occurs throughout the unit, generally along the highway corridor.</p> <p>RS 2477 Trails are located within this unit and include: (RST 412) Slate Creek Trail (RST 209) Bettles - Coldfoot Trail (RST 591) Coldfoot - Junction Trail 49 (east route) (RST 9) Coldfoot - Chandalar Lake Trail (RST 262) Caro - Coldfoot Trail (RST 899) Hammond River Trail (RST 254) Wiseman - Chandalar Trail (RST 1611) Bergman - Cathedral Mountain Trail (RST 450) Hickel Highway (RST 38) Tramway Bar</p> <p>The AHRS reports heritage sites in or around this unit.</p>

Unit # / Name	Designation/ Acres	Map	Management Intent	Resources and Uses
D-02 Coldfoot Development Node	Sc, Tc 6,355ac	3-2	<p>Manage the unit as a utility and transportation corridor to facilitate transportation of oil and gas resources from the North Slope to facilities in other areas of the state and to support commercial development opportunities.</p> <p>Minimize impacts to fish and wildlife habitat values and harvest opportunities. Decisions related to development shall consider potential impacts on the habitat and harvest values and include stipulations/conditions/measures that will avoid, minimize, or mitigate potential negative effects. DNR shall consult ADF&G regarding authorizations involving uses that may impact brown bear, Dall sheep, and anadromous waterbodies.</p> <p>Lands within the proposed AKLNG and ASAP rights-of-way and other lands with infrastructure that are critical for oil and gas development, maintenance, or operations shall be retained in state ownership.</p> <p>Provide continuity in existing transportation and pipeline operations, and for future linear projects consistent with public and industrial needs. Under AS 19.40.200, lands are available for lease that are necessary for oil & gas purposes or state leases or materials sales for highway maintenance or airport purposes. Leases should be complementary and not compete with existing development. Lands are also available for nonresidential disposal if the disposal will further local communities' interests or recreational opportunities and if there is adequate public facilities and market demand to support the disposal.</p> <p>DMLW Water Resources Section should be consulted prior to development to determine impacts to the reserved water resources in this unit. See Appendix F for more information.</p> <p>The unit is affected by MO 1045, 1118, 1147, 11602A01, 11602A03, and LLO 32.</p> <p>Authorizations that may impact RS 2477 routes should ensure access is maintained.</p> <p>Protect heritage sites.</p>	<p>Many leases for pipeline ROWs exist in this unit. These leases include the Alyeska Pipeline ROW (ADL 63574), Alaska Gasline ROW for the mainline and ASAP (ADL 418997 and ADL 421297), and the Point Thomson Export Pipeline ROW (ADL 418975). Other authorized linear projects may occur in the future. There are two other leases within the unit: a communications site (ADL 421563) and an administrative parcel for the National Park Service (ADL 418903). A public easement (ADL 420158) for a pedestrian trail for visitors to access the Arctic Interagency Visitor Center is located off the Dalton Highway near Coldfoot. A private easement (ADL 415997) for utilities is near the Coldfoot airport. Potential hazardous sites (ADL 420306, ADL 420305, and ADL 420800) are located in Coldfoot.</p> <p>Brown bear spring and berry concentration areas are present throughout most of the unit, along an approximately one-mile buffer of Middle Fork Koyukuk River. Dall sheep are present at the eastern edge of the unit. The Middle Fork Koyukuk River is anadromous and provides spawning habitat for Chinook and chum salmon, and habitat for sheefish and other whitefish, as well as resident species such as Arctic grayling, longnose sucker, and slimy sculpin. A reservation of water exists for the Middle Fork Koyukuk River within this unit.</p> <p>A few small slivers of this unit's land are in selection status with the highest priority level. Selections occur in the following sections: F029N012W protracted sections 23, 24, and 26; F028N012W protracted sections 15 and 16. The remaining land is state owned.</p> <p>RS 2477 Trails are located within this unit and include: (RST 412) Slate Creek Trail (RST 209) Bettles - Coldfoot Trail (RST 591) Coldfoot - Junction Trail 49 (east route) (RST 9) Coldfoot - Chandalar Lake Trail (RST 262) Caro - Coldfoot Trail</p> <p>The AHRS reports heritage sites in or around this unit.</p>

Unit # / Name	Designation/ Acres	Map	Management Intent	Resources and Uses
D-03 Dalton Highway Material Sites	Ma, Ha 919ac	3-2	<p>Manage unit for its material values and resources consistent with the authorizations issued by DNR.</p> <p>DNR shall consult ADF&G regarding authorizations involving uses that may impact bear or caribou habitat.</p> <p>Lands within the proposed AKLNG and ASAP rights-of-way and other lands with infrastructure that are critical for oil and gas development, maintenance, or operations shall be retained in state ownership.</p> <p>A portion of this unit is affected by MCO 529, MO 1162A01, MO 1162A03, MO 1147, and LLO 32.</p>	<p>This unit consists of parcels located on state-owned and selected land containing material sources within or near the Dalton Highway Corridor. Some sites may be open and active, or they may be closed and inactive. Usage at any one of these sites varies by demand. This unit is primarily used for gravel and construction material extraction. There is potential for further development of these resources.</p> <p>Caribou habitat is present in the northern portion of the Dalton Corridor. Bear spring and berry area concentrations are present throughout the parcels near Coldfoot. The Middle Fork Koyukuk River crosses through this unit and is an anadromous fish-bearing stream. A reservation of water exists for the Middle Fork Koyukuk River within this unit. Subsistence occurs in and around this unit.</p> <p>Portions of the Alyeska Pipeline ROW (ADL 63574), Alaska Gasline ROW for the mainline and ASAP (ADL 418997 and ADL 421297) are within this unit.</p>
D-04 Dalton Highway Public Facilities	Pr 2,318ac	3-2	<p>This unit consists of multiple parcels of land under management agreements with other agencies with most located in and around Coldfoot. Some of the parcels are under management agreements for the Department of Transportation & Public Facilities, including management for airports, camps, and facilities. Land should be managed according to FAA and DOT/PF operational requirements and with the management plan for the airport. Other facilities should be managed according to their agreement requirements.</p> <p>Lands that have oil and gas company agreements should be managed accordingly and for oil and gas values.</p> <p>The parcel with the National Park Service visitor's center and cabin should be managed for recreational values.</p> <p>A portion of this unit is affected by MO 1118, 1162A01, 1162A03, 1045, and 1147; and LLO 32.</p> <p>DMLW Water Resources Section should be consulted prior to development to determine impacts to the reserved water resources in this unit. See Appendix F for more information.</p> <p>Authorizations that may impact RS 2477 routes should ensure access is maintained.</p> <p>Protect heritage sites.</p>	<p>The topography consists of low-lying terrain. Vegetation is mixed with forests and shrubland.</p> <p>Brown bear spring and berry concentration areas occur throughout the northern half of the parcels. The Middle Fork Koyukuk River and Slate Creek cross through this unit and are anadromous fish-bearing streams. A reservation of water exists for the Middle Fork Koyukuk River within this unit.</p> <p>Management agreements associated with the parcels in this unit include: ADL 415082, ADL 415659, ADL 414962, ADL 415654, ADL 415688, ADL 415686, ADL 415656, ADL 415217, and ADL 410106. The Coldfoot, Wiseman, Linda Creek, Dietrich, and Prospect Creek airports and landing strips are included in this unit. The Arctic Circle Dump at MP 118 is also within this unit.</p> <p>Leases for pipeline ROWs exist in this unit, including the Alaska Gasline ROW for the mainline and ASAP (ADL 418997 and ADL 421297). Other authorized linear projects may occur in the future. The other lease within the unit is a communications site (ADL 421563). A public easement (ADL 420158) for a pedestrian trail for visitors to access the Arctic Interagency Visitor Center is located off the Dalton Highway near Coldfoot. Private easements (ADL 415997 and ADL 415793) for utilities are near the Coldfoot airport. Potential hazardous sites (ADL 421094, ADL 420304, ADL 420305, and ADL 420800) are associated with Coldfoot Camp diesel leaks and other contamination in Coldfoot.</p>

Unit # / Name	Designation/ Acres	Map	Management Intent	Resources and Uses
				<p>RS 2477 Trails are located within this unit and include: (RST 209) Bettles - Coldfoot Trail (RST 412) Slate Creek Trail (RST 450) Hickel Highway (RST 9) Coldfoot - Chandalar Lake Trail (RST 591) Coldfoot - Junction Trail 49 (east route) (RST 262) Caro - Coldfoot Trail (RST 411) Chandalar - Chandalar Mine Trail (RST 254) Wiseman - Chandalar Trail</p> <p>The AHRS reports heritage sites in or around this unit.</p>
D-05 Prospect Creek, Bonanza Creek, Fish Creek	Rm 91,127ac	3-2	<p>Due to the lack of significant resources on these lands, development is not anticipated. Any authorizations that are issued should avoid riparian habitat.</p> <p>DNR shall consult ADF&G regarding authorizations involving uses that may impact anadromous waterbodies.</p>	<p>The terrain is hilly throughout. The vegetation is dominated by shrubland with pockets of forest along creeks and rivers.</p> <p>Commercial quantities of REEs may exist in dispersed locations throughout.</p> <p>Moose winter concentrations are present in about half of this unit. Anadromous streams, Unnamed and Prospect Creek, occur in the northern portion of this unit. Stevens Village community members harvest furbearers along the southern edge of this unit.</p> <p>The entire unit is in selection status; all are ANILCA top-filed lands. The selection priority assigned is low.</p>
D-06 Kanuti - Yukon Connectivity Corridor	Ha, Hv 103,921ac	3-2	<p>Manage to protect and maintain wildlife and habitat values. Unit is to be retained in state ownership.</p> <p>DNR shall consult ADF&G and USFWS regarding authorizations involving uses that may impact the wildlife connectivity corridor. Authorizations must consider the potential impacts on the wildlife corridor and subsistence and include general mitigation measures that will avoid, minimize, or mitigate any negative effects.</p> <p>Authorizations that may impact RS 2477 routes should ensure access is maintained.</p> <p>Maintain and protect opportunities for subsistence.</p> <p>Protect heritage sites.</p>	<p>Topography is gently hilly in the south and becomes mountainous in the north. Vegetation is dominated by evergreen forests with pockets of shrubland and wetlands.</p> <p>Land in this unit provides a wildlife connectivity corridor between Kanuti and Yukon Flats National Wildlife Refuges. Stevens Village community members harvest furbearers within the unit.</p> <p>There is a small block of mining claims and commercial quantities of REEs may exist in the northern portion of the unit.</p> <p>The entire unit is in selection status; six sections are state-selected and the rest are ANILCA top-filed lands. The selections have a low priority level.</p> <p>RS 2477 Trails are located within this unit and include: (RST 450) Hickel Highway (RST 591) Coldfoot - Junction Trail 49 (east route)</p> <p>The AHRS reports heritage sites in or around this unit.</p>

Unit # / Name	Designation/ Acres	Map	Management Intent	Resources and Uses
D-07 Fort Hamlin Hills	Ha, Hv 36,068ac	3-2	<p>Manage to protect and maintain wildlife and habitat values. Unit is to be retained in state ownership.</p> <p>DNR shall consult ADF&G and USFWS regarding authorizations involving uses that may impact the wildlife connectivity corridor. Authorizations must consider the potential impacts on the wildlife corridor and subsistence and include general mitigation measures that will avoid, minimize or mitigate any negative effects.</p> <p>Maintain and protect opportunities for subsistence.</p>	<p>Terrain is hilly. Vegetation is dominated by evergreen forests with pockets of wetlands and shrubland.</p> <p>Land in this unit provides a wildlife connectivity corridor between Kanuti and Yukon Flats National Wildlife Refuges.</p> <p>Stevens Village community members harvest bear, furbearers, and moose in this unit.</p> <p>The entire unit is in selection status; all are ANILCA top-filed lands. The selection priority assigned is low.</p>



Northeast Alaska Area Plan Map 3-2

Dalton Corridor Region Planning Units and Designations

- Dalton Corridor Region
- Planning Units
- Dalton Highway
- RS 2477
- State Land
- State Selected Land
- Private or Other Land
- Native Land
- Native Selected Land
- BLM Land
- NPS/USFWS

Unit Designations

- D-01 Tc, Ha, Rd
- D-02 Sc, Tc
- D-03 Ma, Ha
- D-04 Pr
- D-05 Rm
- D-06 Ha, Hv
- D-07 Ha, Hv



Land use designations only apply to land owned by the State Department of Natural Resources, as indicated by the management units on this map. There are some small private parcels contained within these units but the designation does not apply to these non-state lands.

This map is for graphic representation only and is intended to be used only as a guide. Areas outside of the planning area and Dalton Region are shaded out. Colors may appear darker.

Created: August 2025
DS, DNR, DMLW, RADS
Projected Coordinate System: NAD 1983
UTM Zone 6 North

