

Arctic Region (A)

The Arctic Region encompasses an area of 15,614,477 acres and is situated in the northern part of the planning area. The area, generally described, abuts the North Slope Area Plan and proceeds east to the Canadian border. Its southern border approximately follows the border of the Yukon Flats National Wildlife Refuge. Arctic Village is located within this region. The Arctic Village area hosts a majority Native population with use by the Neets' ai Gwich'in people since time immemorial. Nomadic, subsistence lifestyles characterized the area until the early 1900s when permanent settlement began. Residents continue to use the land for subsistence activities.

The Arctic Region is a matrix of mountains, tundra, lakes, rivers, and streams, underlain with continuous and discontinuous permafrost. The Arctic Region is an important area for caribou winter use areas, Dall sheep, and breeding for birds of conservation concern.

Distribution and Characteristics

Land ownership is mixed throughout this region and includes state land, private land, Native land, and federal land. State land and state selected land is concentrated around the Chandalar Lake area and makes up 1,980,445 acres and 284,006 acres respectively. Private land, derived from land disposals and Native allotments comprise 10,171 acres. Native owned land is generally located in the Venetie Indian Reservation and in the mountains east of the Dalton Highway; these lands account for 1,617,089 acres. The remainder of the land is federally owned, 11,916,458 acres, mainly located within the Arctic National Wildlife Refuge (ANWR) in the northeastern area of the region.

Access, Resources, and Uses of State Land

Access to this region is primarily by fly-in. Within the region, access is primarily with snowmachine in the winter and ATV in the summer. The natural resources of the Arctic are the abundant mineral and animal resources that can provide utility or economic benefit to humans. The mineral resources include major deposits of gold. Biological resources of the Arctic region are primarily caribou, Dall sheep, and birds. Residents of the communities use the region for hunting, fishing, and general subsistence activities.

Management Planning Constraints and Considerations

No state or local management plans have previously affected this area.

Management Summary

State land will be managed consistent with its designation(s), as specifically articulated through management intent found in the Resource Allocation Table in Chapter 3 and the applicable goals, objectives, and guidelines found in Chapter 2. Some lands have one designation while other lands are co-designated. The table below provides a quick reference of the designations and co-designations used in this region and their acreages.

Designation or Co-Designations	Acreage
Habitat	559,253
Mineral	204,318
Public Facilities-Retain	223
Habitat / Harvest / Public Recreation- Dispersed	20,260
Harvest / Habitat	403,799
Resource Management	869,837
Settlement	4,609
Public Recreation-Dispersed	23,013
Mineral / Habitat	176,559

1 **Resource Allocation Table – Arctic Region**

2

Unit # / Name	Designation/ Acres	Map	Management Intent	Resources and Uses
A-01 Brooks Range	Rm 421,407ac	3-1	<p>Due to the remote nature and mountainous terrain limitations of these lands, development is not anticipated.</p> <p>DNR shall consult ADF&G regarding authorizations involving uses that may impact brown bear, caribou, and Dall sheep concentration areas.</p> <p>Protect heritage sites.</p>	<p>Terrain is mountainous. Vegetation is dominated by shrubland.</p> <p>Brown bear spring and berry concentration areas occur in small parts of the far northeast corner of the unit. Caribou winter use areas are present in the eastern portions of the unit. Dall sheep habitat is present throughout the highest elevations of the unit.</p> <p>There may be areas of commercially viable quantities of REEs.</p> <p>A portion of this unit's land is in selection status with the highest priority level. Selections occur in the following townships: F033N007W, F034N005W, F034N006W, F034N007W, F035N007W, F035N009W, and F036N009W. The remaining land is state owned.</p> <p>The AHRS reports heritage sites in or around this unit.</p>
A-02 Thru Creek	Mi 38,628ac	3-1	<p>Manage unit for its mineral values.</p> <p>Any mineral development shall, in addition to the management guidelines of the Fish and Wildlife section of Chapter 2, consider impacts upon sheep habitat. Consult ADF&G prior to issuing an authorization involving a long-term or permanent use.</p> <p>Consideration of the impacts upon hydrologic values associated with the Teedriinjik River is important.</p>	<p>There are extensive mineral occurrences throughout the unit with copper, silver, and zinc as the main commodities. Dispersed portions of the unit may have commercial quantities of REEs. This unit is characterized by mountainous topography. Vegetation is dominated by shrubland.</p> <p>Dall sheep habitat is present throughout most of the unit. A small portion of the southeastern corner of the unit has caribou wintering areas and a small portion of the northeastern part of the unit has bear concentrations in spring and around berry patches.</p> <p>Approximately 6 sections of this unit's land is in selection status with the highest priority level. The selection occurs in township F035N006W. The remaining land is state owned.</p>
A-03 Mathews River	Ha 52,003ac	3-1	<p>Manage to protect and maintain wildlife and habitat.</p> <p>Due to the remote nature and mountainous terrain of these lands, development is not anticipated.</p> <p>DNR shall consult ADF&G and may contact BLM regarding authorizations involving uses that may impact Dall sheep habitat, lambing areas, and mineral licks. Any authorizations that are issued should avoid riparian habitat.</p>	<p>Terrain is mountainous. Vegetation is dominated by shrubland.</p> <p>Dall sheep habitat is present throughout the highest elevations of the unit and mineral licks and lambing areas, identified as BLM Areas of Critical Environmental concern, occur in or adjacent to the unit.</p> <p>A portion of this unit's land is in selection status with the highest priority level. Selections occur in the following townships: F033N009W, F034N009W, and F035N009W. The remaining land is state owned.</p>

Unit # / Name	Designation/ Acres	Map	Management Intent	Resources and Uses
A-04 Baby Creek	Mi 120,020ac	3-1	<p>Manage unit for its mineral values and for its sheep and fish habitat.</p> <p>Any mineral development shall, in addition to the management guidelines of the Fish and Wildlife section of Chapter 2, consider impacts upon sensitive sheep and fish habitat. Consult ADF&G prior to issuing an authorization involving a long-term or permanent use.</p> <p>Consideration of the impacts upon hydrologic values associated with Baby and Willow Creeks is important because round white fish have been recorded and previous mining operations have been located along these creeks.</p> <p>Protect heritage sites.</p>	<p>There are extensive closed mining claims in the northern portion of the unit with copper, gold, and zinc as the main commodities. The southern portion of the unit may have commercial quantities of REEs. This unit is characterized by mountainous topography. Vegetation is dominated by shrubland.</p> <p>Dall sheep habitat is present throughout the unit. Creeks transect the unit and host a variety of species, including round whitefish and Arctic grayling.</p> <p>Approximately 18 sections of this unit's land is in selection status with no priority level. The selection occurs in township F033N007W. The remaining land is state owned.</p> <p>The AHRS reports heritage sites in or around this unit.</p>
A-05 Big Creek, Boulder Lake	Ha 326,075ac	3-1	<p>Manage to protect and maintain wildlife, habitat, and subsistence values.</p> <p>DNR shall consult ADF&G regarding authorizations involving uses that may impact wildlife habitat or sensitive life stages. Authorizations must consider the potential impacts on the wildlife habitat and include general mitigation measures that will avoid, minimize or mitigate any negative effects. Any authorizations that are issued should avoid riparian habitat. Due to the remote nature of these lands, development is not anticipated.</p> <p>Authorizations that may impact RS 2477 routes should ensure access is maintained.</p> <p>Protect heritage sites.</p>	<p>Topography is generally mountainous. Vegetation is dominated by shrubland.</p> <p>Dall sheep habitat is present at the higher elevations. Moose rutting occurs in the majority of the unit and winter concentrations occur along the eastern boundary of the unit. Caribou winter use areas occur throughout the unit. Two major anadromous waterbodies pass through: the Teedriinjik River mainstem and Middle Fork. A variety of fish are present in the waterways of this unit including Arctic grayling, slimy sculpin, and round whitefish. Venetie community members harvest fish and sheep along the edges of this unit.</p> <p>RS 2477 Trails are located within this unit and include: (RST 261) Caro - Big Creek Trail (RST 262) Caro - Coldfoot Trail (RST 890) Middle Fork - Chandalar Trail (RST 263) Caro - Chandalar Mine Trail (RST 411) Chandalar - Chandalar Mine Trail</p> <p>The AHRS reports heritage sites in or around this unit.</p>

Unit # / Name	Designation/ Acres	Map	Management Intent	Resources and Uses
A-06 Chandalar Mine	Mi, Ha 78,161ac	3-1	<p>Manage unit for its mineral values and for its important moose, caribou, sheep, and fish habitat.</p> <p>Any mineral development shall, in addition to the management guidelines of the Fish and Wildlife section of Chapter 2, consider impacts upon sensitive moose, caribou, sheep, and fish habitat. Consult ADF&G prior to issuing an authorization involving a long-term or permanent use.</p> <p>Consideration of the impacts upon hydrologic values associated with the Middle Fork Teedriinjik River is important, especially since some mining claims and mineral deposits are co-located with the river.</p> <p>Authorizations that may impact RS 2477 routes should ensure access is maintained.</p> <p>Protect heritage sites.</p>	<p>There are extensive mineral occurrences and mining operations mainly for placer deposits. This unit is characterized by mountainous topography. Vegetation is dominated by shrubland.</p> <p>Caribou wintering is prevalent throughout the unit. Moose rutting, along with some wintering areas, occur through most of the unit. Dall sheep habitat is present. An anadromous stream, Middle Fork Teedriinjik River, runs through the southernmost sections of the unit.</p> <p>Potential hazardous sites (ADL 420218, ADL 421674, and ADL 420052) are associated with mining contamination.</p> <p>RS 2477 Trails are located within this unit and include: (RST 261) Caro - Big Creek Trail (RST 263) Caro - Chandalar Mine Trail (RST 411) Chandalar - Chandalar Mine Trail (RST 1959) Dictator Creek Trail (RST 890) Middle Fork - Chandalar Trail</p> <p>The AHRS reports heritage sites in or around this unit.</p>

Unit # / Name	Designation/ Acres	Map	Management Intent	Resources and Uses
A-07 Thazzik Mountain, Ackerman Lake	Hv, Ha 403,799ac	3-1	<p>Manage to protect and maintain wildlife and habitat values. Unit is to be retained in state ownership.</p> <p>DNR shall consult ADF&G regarding authorizations involving uses that may impact wildlife habitat or sensitive life stages. Authorizations must consider the potential impacts on the wildlife habitat and include general mitigation measures that will avoid, minimize or mitigate any negative effects. Any authorizations that are issued should avoid riparian habitat. Due to the remote nature of these lands, development is not anticipated.</p> <p>Maintain and protect opportunities for subsistence.</p> <p>Authorizations that may impact RS 2477 routes should ensure access is maintained.</p> <p>Protect heritage sites.</p>	<p>Topography is mostly hilly and mountainous with the valleys coinciding with rivers and creeks. Vegetation is primarily shrubland with valleys hosting wetlands, mixed, deciduous, and evergreen forests.</p> <p>Caribou winter concentration areas cover the entire unit. Moose wintering and rutting areas are present in the northern half of the unit. Small pockets of Dall sheep habitat occurs in the most northern portions of the unit. Two major anadromous waterbodies pass through the unit: the Teedriinjik River mainstem and the Middle Fork. A variety of fish are present in the waterways of this unit including anadromous spawning Chinook and fall chum salmon, as well as Arctic grayling, slimy sculpin, burbot, longnose sucker, and round whitefish. The Upper Teedriinjik River and tributaries especially provide crucial habitat for Chinook fall chum, and coho salmon.</p> <p>Venetie community members harvest furbearers, caribou, sheep, moose, bear, fish, and plants and berries throughout the unit.</p> <p>RS 2477 Trails are located within this unit and include: (RST 27) Beaver - Caro (RST 1644) Caro - Ft. Yukon (RST 261) Caro - Big Creek (RST 262) Caro - Coldfoot (RST 1966) Caro - Coldfoot: West Fork Route (RST 263) Caro - Chandalar Mine</p> <p>The AHRS reports heritage sites in or around this unit.</p>
A-08 Glacier Creek Headwaters	Rm 82,662	3-1	Due to the remote nature of these lands, development is not anticipated.	<p>Terrain is mostly mountainous with some flatlands in the southern half of the unit. Vegetation is dominated by shrubland with isolated pockets of sedge, forest, and wetlands.</p> <p>Dall sheep habitat is present throughout the northern half of this unit and some areas of the southern portion. Caribou winter use areas occur throughout. Venetie community members harvest sheep, moose, and caribou along the edges of this unit.</p> <p>There may be areas of commercially viable quantities of REEs.</p>
A-09 Lost Eastern Vales	Mi 3,840ac	3-1	Manage unit for its mineral values and for its caribou and sheep habitat.	<p>Minerals occur with copper and zinc as the main commodities. Commercial quantities of REEs may exist in dispersed locations throughout. This unit is characterized by mountainous topography. Vegetation is predominantly shrubland with pockets of evergreen forest.</p> <p>Caribou winter areas and Dall sheep habitat are present throughout the unit.</p>

Unit # / Name	Designation/ Acres	Map	Management Intent	Resources and Uses
A-10 Glacier and Bob Johnson Lakes	Rd 7,680ac	3-1	Manage for recreational values. It is intended that this unit continue in public ownership.	<p>This area consists of mainly mountainous topography with some flatlands present around the lakes. Vegetation is dominated by shrubland with pockets of evergreen forest around Glacier Lake.</p> <p>Bob Johnson and Glacier Lake, along with access to RS2477 trails allow for recreational opportunities. Bob Johnson Lake has Arctic grayling, northern pike, slimy sculpin, burbot, whitefish, and lake trout.</p> <p>RS 2477 Trails are located within this unit and include: (RST 254) Wiseman - Chandalar Trail</p> <p>A mineral occurrence is present and is associated with placer gold.</p>
A-11 Eider Creek, Wakeup Creek	Mi, Ha 15,768ac	3-1	<p>Manage unit for its mineral values.</p> <p>Any mineral development shall, in addition to the management guidelines of the Fish and Wildlife section of Chapter 2, consider impacts upon sensitive Dall sheep habitat. Consult ADF&G prior to issuing an authorization involving a long-term or permanent use.</p> <p>Authorizations that may impact RS 2477 routes should ensure access is maintained.</p> <p>Protect heritage sites.</p>	<p>There are APMAs present and mining operations have been conducted on placer deposits. This unit contains mainly mountainous topography. Vegetation is dominated by shrubland.</p> <p>Dall sheep habitat is present with lambing areas and mineral licks in or around the unit.</p> <p>A small sliver of this unit's land is in selection status with a high priority level. Selections occur in the following sections: F031N010W protracted sections 13, 24, 25, and 36. The remaining land is state owned.</p> <p>RS 2477 Trails are located within this unit and include: (RST 254) Wiseman - Chandalar Trail.</p> <p>The AHRS reports heritage sites in or around this unit.</p>
A-12 Poss Mountain	Ha 15,013ac	3-1	<p>Manage to protect and maintain wildlife and habitat values. Unit is to be retained in state ownership.</p> <p>DNR shall consult ADF&G regarding authorizations involving uses that may impact Dall sheep habitat or sensitive life stages. Authorizations must consider the potential impacts on the sheep and riparian habitat and include general mitigation measures that will avoid, minimize or mitigate any negative effects. DNR may consult BLM for authorizations that involve uses that could impact Dall sheep critical environmental concern areas.</p> <p>Development is not anticipated in this unit and lands are generally not suitable due to terrain limitations.</p>	<p>Topography is mountainous. Vegetation is dominated by shrubland.</p> <p>Dall sheep habitat is present throughout, with lambing areas and mineral licks in or around the unit. The Poss Mountain area of critical environmental concern identified by BLM for Dall sheep mineral licks and lambing occurs in this unit.</p> <p>The entire unit is in selection status; all are ANILCA top-filed lands. These selections are a medium-low priority level.</p>

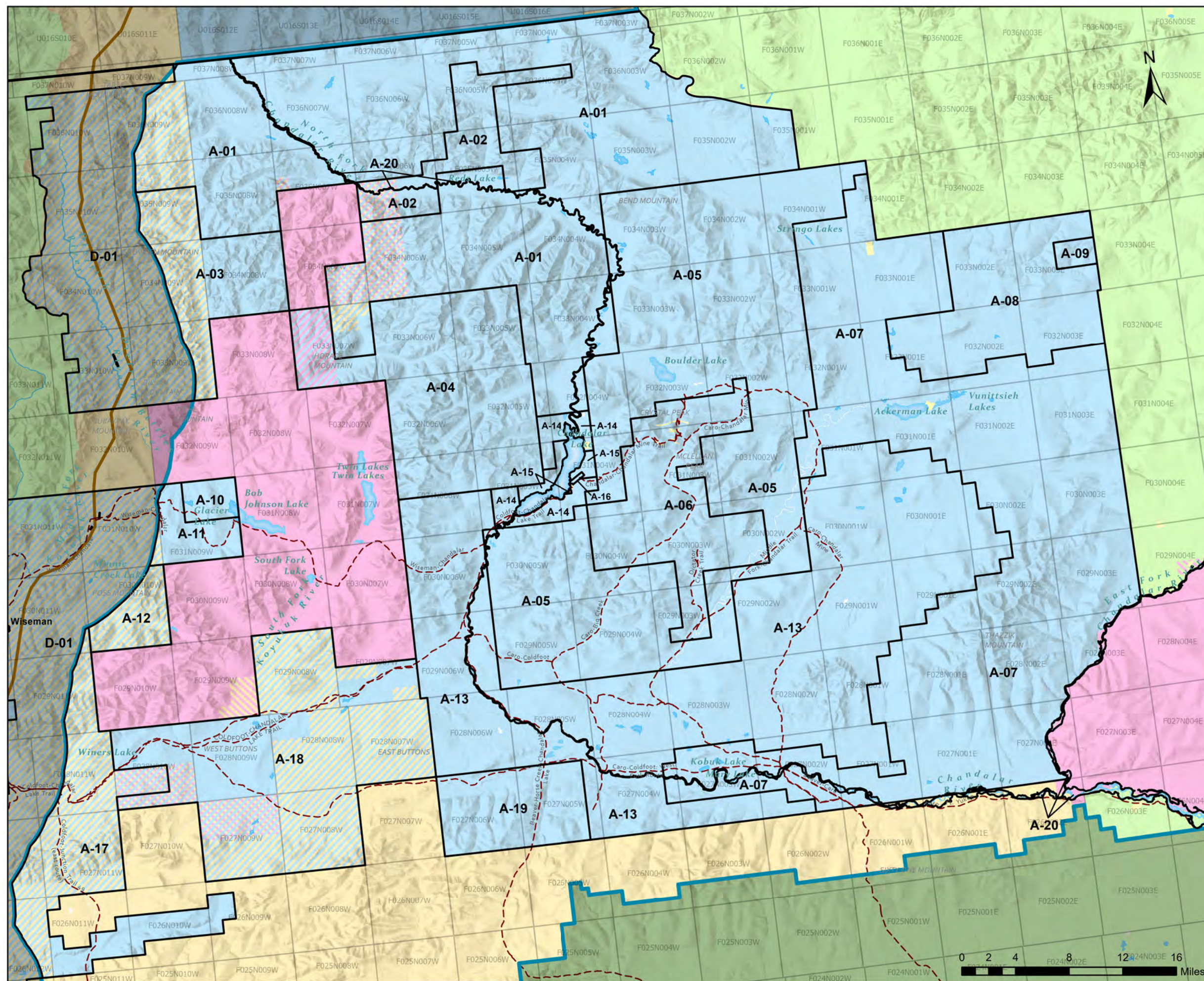
Unit # / Name	Designation/ Acres	Map	Management Intent	Resources and Uses
A-13 Chandalar Flats	Rm 365,768ac	3-1	<p>Due to the remote nature of these lands, development is not anticipated. Any authorizations that are issued should avoid riparian habitat.</p> <p>DNR shall consult ADF&G regarding authorizations involving uses that may impact anadromous waterbodies.</p> <p>Authorizations that may impact RS 2477 routes should ensure access is maintained.</p> <p>Protect heritage sites.</p>	<p>Terrain is mixed with mountainous and hilly portions in the northern and southern regions of the unit and flatlands in the middle and in valleys. Vegetation is shrubland at high elevations and a mix of wetlands, evergreen, deciduous, and mixed forest at lower elevations.</p> <p>Many anadromous streams run through this unit including the Teedriinjik (Chandalar) River (North, Middle, and West Fork), Monarch Creek, and Crooked Creek. Areas of the Teedriinjik River watershed in this unit are crucial spawning habitat for Chinook, summer and fall chum, and coho salmon, as well as resident whitefish, least cisco, Arctic grayling, lake chub, longnose sucker, slimy sculpin, burbot, and round whitefish. Small areas of moose wintering and rutting occur in the northwestern portions of this unit. Caribou winter use areas occur throughout most of the unit except the extreme western portions. Dall sheep habitat is present in the northwest corner of the unit.</p> <p>There may be areas of commercially viable quantities of REEs.</p> <p>Many RS 2477 Trails are located within this unit and include: (RST 254) Wiseman - Chandalar Trail (RST 9) Coldfoot - Chandalar Lake Trail (RST 257) Beaver-Horse Creek - Chandalar Lake Trail (RST 1966) Caro - Coldfoot: West Fork Route (RST 261) Caro - Big Creek Trail (RST 262) Caro - Coldfoot Trail (RST 890) Middle Fork - Chandalar Trail (RST 263) Caro - Chandalar Mine Trail</p> <p>The AHRS reports heritage sites in or around this unit.</p>

Unit # / Name	Designation/ Acres	Map	Management Intent	Resources and Uses
A-14 Chandalar Lake Recreation	Rd 15,333ac	3-1	Manage for recreational values. Unit is to be retained in state ownership. Protect heritage sites.	<p>This area consists of the northern and southern lands adjoining Chandalar Lake. The terrain is mountainous with small areas of flatlands in the northeast and southwest corners of the unit. Vegetation is primarily shrubland with isolated pockets of deciduous and evergreen forest.</p> <p>Caribou wintering occurs in the eastern portions of this unit. Moose rutting is present along the southeast border of the unit. Dall sheep habitat is present at high elevations. Anadromous Chinook salmon have been recorded in Chandalar Lake and at the inlet to the lake. Also, Arctic grayling, northern pike, slimy sculpin, burbot, whitefish, and lake trout presence has been documented in Chandalar Lake.</p> <p>Access to Chandalar Lake and RS2477 trails allow for recreational opportunities.</p> <p>RS 2477 Trails are located within this unit and include: (RST 254) Wiseman - Chandalar Trail (RST 9) Coldfoot - Chandalar Lake Trail (RST 411) Chandalar - Chandalar Mine Trail</p> <p>The AHRS reports heritage sites in or around this unit.</p>
A-15 Chandalar Lake Settlement	Se 4,609ac	3-1	<p>Land disposal during the planning period is appropriate. See Chapter 2 requirements for additional guidance.</p> <p>Avoid moose rutting areas in siting. Consult with ADF&G.</p> <p>Public access on RS 2477 Trails will be maintained.</p> <p>The entire unit is affected by MCO 427.</p> <p>Protect heritage sites.</p>	<p>Parcels in this unit have been classified as settlement since 1984. There have been past land disposals.</p> <p>Terrain is variable with flat areas around Chandalar Lake, with elevation steeply increasing from those areas. Vegetation is dominated by shrubland.</p> <p>Caribou wintering is present throughout most of the unit. Dall sheep habitat occurs in the mountainous portions of the unit. A moose rutting concentration area occurs in the southeast corner of the unit.</p> <p>RS 2477 Trails are located within this unit and include: (RST 411) Chandalar - Chandalar Mine Trail (RST 9) Coldfoot - Chandalar Lake Trail (RST 254) Wiseman - Chandalar Trail</p> <p>The AHRS reports heritage sites in or around this unit.</p>

Unit # / Name	Designation/ Acres	Map	Management Intent	Resources and Uses
A-16 Arctic Region Public Facilities	Pr 223ac	3-1	<p>This unit consists of the Chandalar Airport. The parcel is under a management agreement with the Department of Transportation & Public Facilities. Land should be managed according to FAA and DOT/PF operational requirements and with the management plan for the airport.</p> <p>Authorizations that may impact RS 2477 routes should ensure access is maintained.</p> <p>Protect heritage sites.</p>	<p>The topography consists of mostly flat terrain. Vegetation is mostly shrubland with small areas of forests.</p> <p>Caribou winter use is present.</p> <p>The management agreement associated with the parcel in this unit is ADL 410106.</p> <p>An RS 2477 trail is located within this unit: (RST 411) Chandalar - Chandalar Mine Trail</p> <p>The AHRS reports heritage sites in or around this unit.</p>
A-17 Sitkum Pass, Mosquito Fork	Mi, Ha 82,630ac	3-1	<p>Manage unit for its mineral values and for its fish habitat.</p> <p>Any mineral development shall, in addition to the management guidelines of the Fish and Wildlife section of Chapter 2, consider impacts upon sensitive fish habitat. Consult ADF&G prior to issuing an authorization involving a long-term or permanent use.</p> <p>Consideration of the impacts upon hydrologic values associated with the anadromous South Fork Koyukuk River and Mosquito Fork is important, especially since some mining claims and APMAs are co-located with the rivers.</p> <p>Authorizations that may impact RS 2477 routes should ensure access is maintained.</p> <p>Protect heritage sites.</p>	<p>There are mineral occurrences, mines, mining claims (state and federal), and APMAs spread across the unit with copper, silver, and gold as the main commodities. Commercial quantities of REEs may exist in dispersed locations throughout. This unit is characterized by mountainous topography in the north giving way to gentler hills in the south. Vegetation is mixed with shrubland at high elevations and deciduous and evergreen forests in the valleys.</p> <p>Dall sheep habitat is present in the northernmost reaches of the unit. This unit hosts a variety of fish in its rivers and creeks, including anadromous spawning Chinook and chum salmon and resident species such as Arctic grayling, round whitefish, Dolly Varden, and slimy sculpin. South Fork Koyukuk River and Mosquito Fork are anadromous waterbodies. There is crucial Chinook and summer chum salmon spawning habitat associated with the South Fork Koyukuk River drainage.</p> <p>Almost the entire unit's land is in selection status. Selections closest to the highway have the highest priority level and ones further away have the lowest priority status.</p> <p>RS 2477 Trails are located within this unit and include: (RST 591) Coldfoot - Junction Trail 49 (east route) (RST 9) Coldfoot - Chandalar Lake Trail (RST 262) Caro - Coldfoot</p> <p>The AHRS reports heritage sites in or around this unit.</p>

Unit # / Name	Designation/ Acres	Map	Management Intent	Resources and Uses
A-18 East and West Buttons	Ha 166,162ac	3-1	<p>Manage to protect and maintain wildlife and habitat values. Unit is to be retained in state ownership.</p> <p>DNR shall consult ADF&G and may contact BLM regarding authorizations involving uses that may impact crucial salmon spawning habitat. Authorizations must consider the potential impacts on the riparian habitat and include general mitigation measures that will avoid, minimize, or mitigate any negative effects. Development is not anticipated in this unit and lands are generally not suitable due to mountainous terrain limitations.</p> <p>Authorizations that may impact RS 2477 routes should ensure access is maintained.</p> <p>Protect heritage sites.</p>	<p>This area consists of hilly topography. Vegetation is primarily shrubland with mixed forest and wetlands at low elevations.</p> <p>Small areas of Dall sheep habitat occur in the northern areas of the unit. There is crucial Chinook and summer chum spawning habitat associated with the South Fork Koyukuk River and crucial habitat for Chinook, summer and fall chum, coho, whitefish and cisco associated with the Upper Teedriinjik (Chandalar) River drainage.</p> <p>Approximately 5 townships of this unit's land are in selection status. Most selections are a high priority level with a few areas of medium-high and low priority. Selections occur in the following townships: F029N008W, F029N007W, F028N008W, F028N007W, F027N008W, F027N009W, F028N010W. The remaining land is state owned.</p> <p>RS 2477 Trails are located within this unit and include: (RST 262) Caro - Coldfoot Trail (RST 9) Coldfoot - Chandlar Lake Trail (RST 1966) Caro - Coldfoot: West Fork Route</p> <p>The AHRS reports heritage sites in or around this unit.</p>
A-19 Lower Slopes Copper Prospect	Mi 41,830ac	3-1	<p>Manage unit for its mineral values and for its caribou and fish habitat.</p> <p>Any mineral development shall, in addition to the management guidelines of the Fish and Wildlife section of Chapter 2, consider impacts upon sensitive fish habitat. Consult ADF&G prior to issuing an authorization involving a long-term or permanent use.</p> <p>Consideration of the impacts upon hydrologic values associated with the anadromous West Fork Teedriinjik (Chandalar) River is important.</p> <p>Authorizations that may impact RS 2477 routes should ensure access is maintained.</p>	<p>Minerals occur with copper as the main commodity. Commercial quantities of REEs may exist in dispersed locations throughout. This unit is characterized by mountainous topography. Vegetation is mixed with shrubland at high elevations and deciduous and evergreen forests in the valleys.</p> <p>Caribou winter areas are present in the northeast corner of the unit. This unit hosts a variety of fish in its rivers and creeks, including Arctic grayling, Chinook salmon, and slimy sculpin. The West Fork Teedriinjik (Chandalar) River is anadromous. The Upper Teedriinjik River drainage provides crucial habitat for Chinook, summer and fall chum, coho, whitefish and cisco.</p> <p>RS 2477 Trails are located within this unit and include: (RST 257) Beaver - Horse Creek - Chandalar Lake (RST 1966) Caro - Coldfoot: West Fork Route</p>

Unit # / Name	Designation/ Acres	Map	Management Intent	Resources and Uses
A-20 North Fork Teedriinjik (Chandalar) River	Ha, Hv, Rd 20,260ac	3-1	<p>Manage this unit for the protection of habitat, recreation, and hydrologic values. Emphasis should be on preserving water quality, sensitive habitat, and recreational use of the river.</p> <p>Retain land in public ownership.</p> <p>Maintain and protect opportunities for subsistence.</p> <p>Maintain public access on trails and easements that provide access to and across the river.</p> <p>Protect heritage sites.</p>	<p>This management unit consists of the portions of the Teedriinjik (Chandalar) River as measured from bank-to-bank from ordinary high water mark which are located within the Arctic region. Besides the water column itself, islands and exposed gravel bars are also included in this unit. The Teedriinjik is a navigable waterbody. Cultural resources are present in this unit. Subsistence for furbearers, moose, plants and berries, bear, caribou, fish, waterfowl, sheep, small mammals, and wood occurs in and around this unit by the Venetie and Arctic Village communities.</p> <p>The river has abundant habitat resources. Moose winter concentrations, calving, and rutting occur along the middle of the East Fork. Caribou winter concentrations are found throughout the unit. The river is anadromous and supports Chinook and fall chum salmon. Also present are slimy sculpin, burbot, Arctic grayling, longnose sucker, northern pike, round whitefish, broad whitefish, and least cisco.</p> <p>The land surrounding the river is owned by multiple property owners including state, native, federal, and privately owned parcels.</p>



Northeast Alaska Area Plan Map 3-1

Arctic Region Planning Units and Designations

- Arctic Region
- Planning Units
- Dalton Highway
- RS 2477
- State Land
- State Selected Land
- Private or Other Land
- Native Land
- Native Selected Land
- BLM Land
- NPS/USFWS

Unit Designations

A-01 Rm	A-11 Mi, Ha
A-02 Mi	A-12 Ha
A-03 Ha	A-13 Rm
A-04 Mi	A-14 Rd
A-05 Ha	A-15 Se
A-06 Mi, Ha	A-16 Pr
A-07 Ha, Hv	A-17 Mi, Ha
A-08 Rm	A-18 Ha
A-09 Mi	A-19 Mi
A-10 Rd	A-20 Ha, Hv, Rd



Land use designations only apply to land owned by the State Department of Natural Resources, as indicated by the management units on this map. There are some small private parcels contained within these units but the designation does not apply to these non-state lands.

This map is for graphic representation only and is intended to be used only as a guide. Areas outside of the planning area and Arctic Region are shaded out. Colors may appear darker.

Created: August 2025
DS, DNR, DMLW, RADS
Projected Coordinate System: NAD 1983
UTM Zone 6 North

