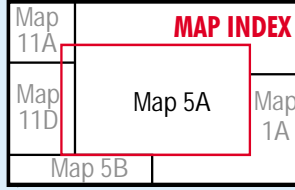
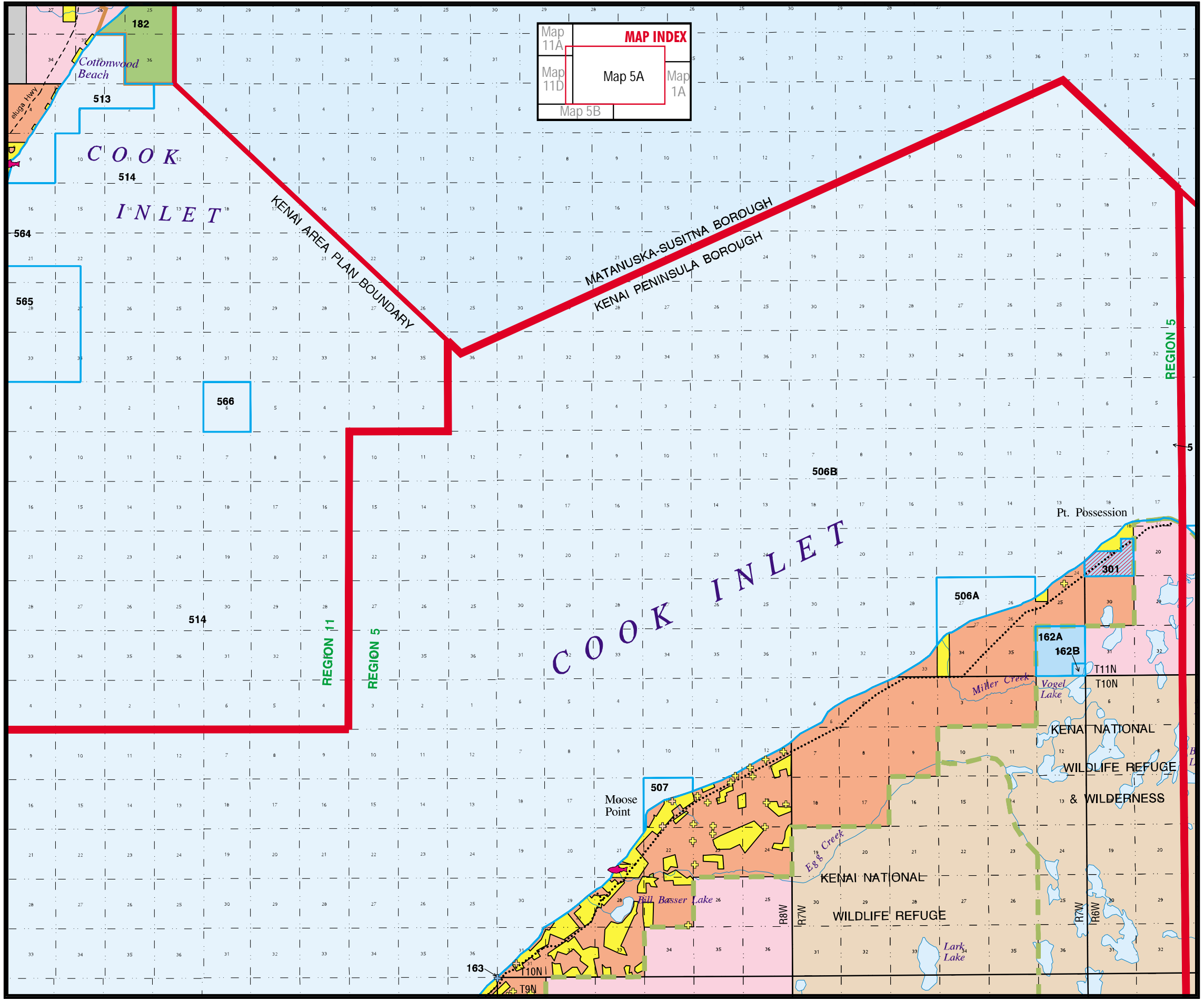


REGION 5

Map 5A - Point Possession

Unit	Designation
162A	gu
162B	ha
163	rh
182	ha hv
301	gu
506A	gu
506B	gu
507	gu
513	ha
565	wd
566	rh



LEGEND

- State owned
- State Park
- Ak. Dept. of Fish & Game
- Ak. Dept. of Trans. & Pub. Facilities
- Borough, City owned
- Natl. Park, Wildlife Refuge or Forest
- Bureau of Land Management
- Native Corporation
- Private
- Mental Health Trust
- State Selected
- Proposed addition to Kenai River SMA
- Proposed addition to State Park system
- Exxon Valdez Oil Spill acquisition
- Borough/City Selected
- City Tidelands
- Legislatively designated area
- Unit boundary
- Special Use Lands
- Region and/or Plan boundary
- Natl. Park, Wildlife Refuge or Forest bdy.
- Anchorage
- Anadromous stream mouth
- 35A** Unit number