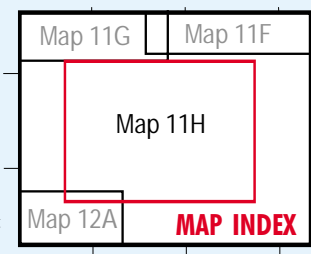
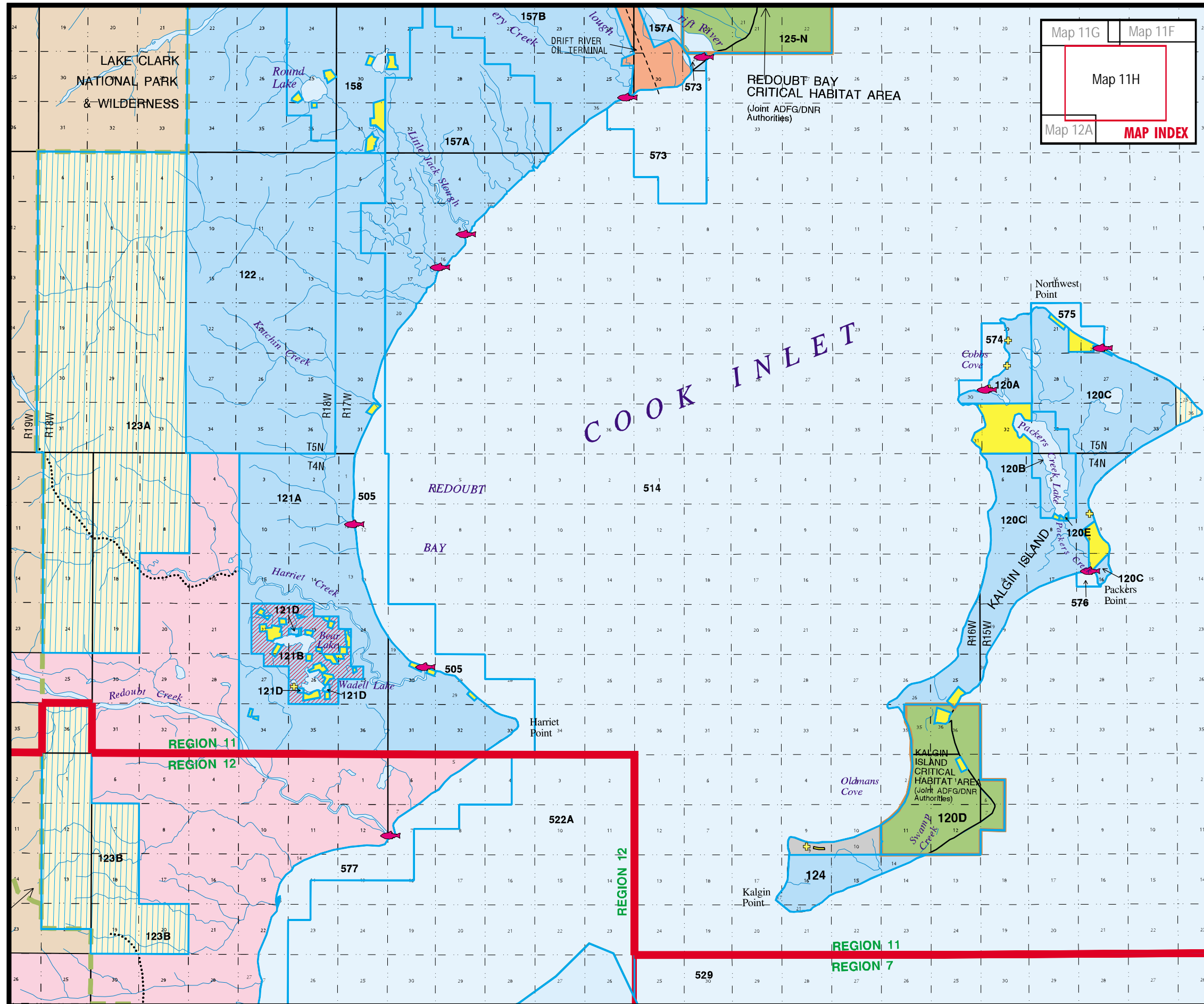


REGION 11

Map 11H - Redoubt Bay & Kalgin Island



Unit	Designation	Unit	Designation
120A	gu	514	gu
120B	rd	522A	rd
120C	gu	529	gu
120D	ha	573	wd
120E	ha	574	gu
121A	gu	575	gu
121B	se	576	ha
121D	ha	rp	
122	gu		
123A	gu		
123B	gu		
124	gu		
125	ha		
157A	ha		
157B	gu		
158	se		
505	ha		

LEGEND

- State owned
- State Park
- Ak. Dept. of Fish & Game
- Ak. Dept. of Trans. & Pub. Facilities
- Borough, City owned
- Natl. Park, Wildlife Refuge or Forest
- Bureau of Land Management
- Native Corporation
- Private
- Mental Health Trust
- State Selected
- Proposed addition to Kenai River SMA
- Proposed addition to State Park system
- Exxon Valdez Oil Spill acquisition
- Borough/City Selected
- City Tidelands
- Legislatively designated area
- Unit boundary
- Special Use Lands
- Region and/or Plan boundary
- Natl. Park, Wildlife Refuge or Forest bdy.
- Anchorage
- Anadromous stream mouth
- 35A** Unit number