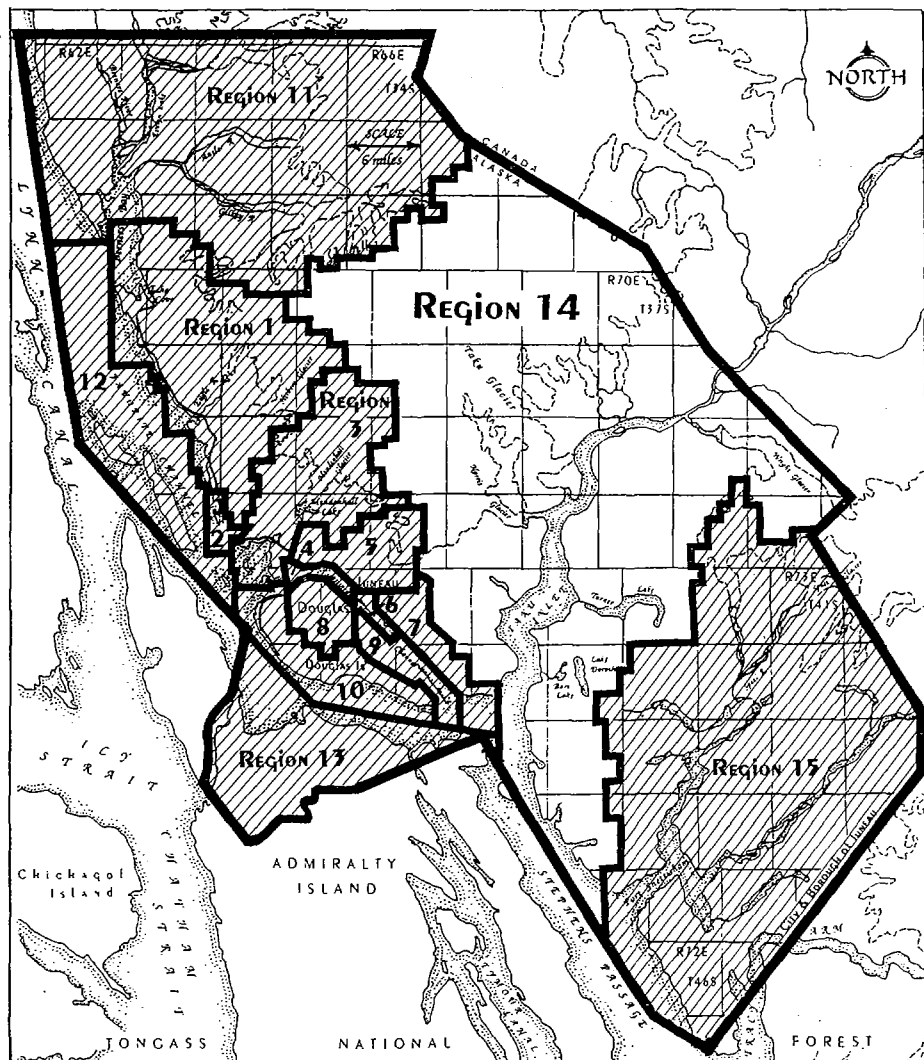


Region 14 - Taku River and Harbor

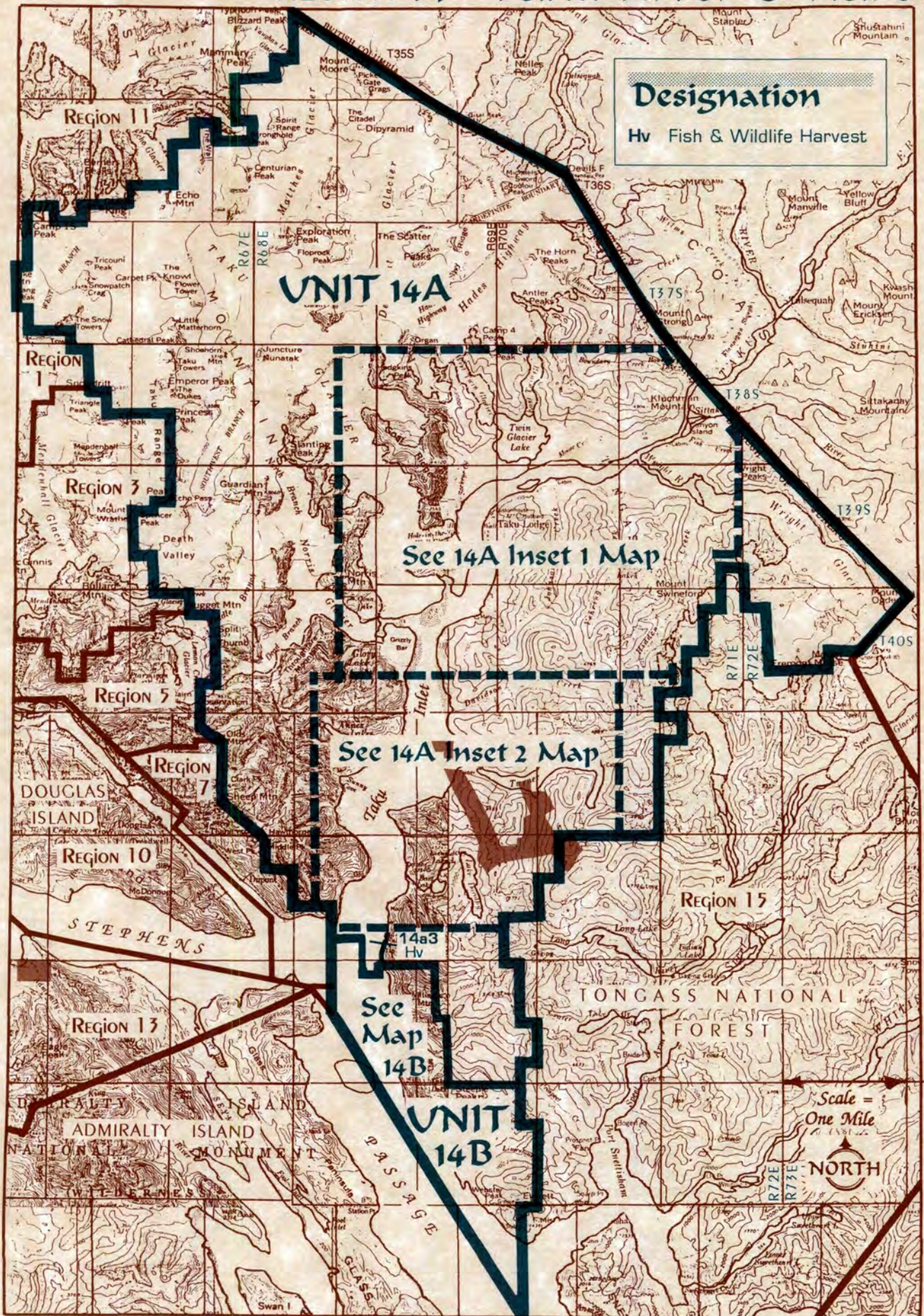
Background

This region includes the Taku River, Taku Inlet, and portions of Stephens Passage. Most of the state lands in this region are tidelands, shorelands, and submerged lands with the following exceptions: state-owned uplands along the lower Taku River and at Taku Harbor, and state-selected uplands at Lake Dorothy and Bart Lake. The marine areas in the entire unit receive heavy seasonal use by boaters from Juneau. This unit is highly scenic for viewing of goats, moose, bear, and waterfowl. The Taku River was found to be eligible by the USFS in the Tongass Land Management Plan as a Scenic River under the criteria in the National Wild and Scenic Rivers Act. However, this river is not recommended for this designation by the USFS at this time. The Taku River has been used historically and currently as a transportation corridor to the sea from northwestern British Columbia. The river is currently used for recreation access and is proposed for future access to mineralized areas in Canada. Stephens Passage supports recreational boating use and commercial transportation by barges and ships.



Location Map

REGION 14 - Taku River & Harbor



Designation

Hv Fish & Wildlife Harvest

UNIT 14A

See 14A Inset 1 Map

See 14A Inset 2 Map

See Map 14B

UNIT 14B

Scale = One Mile

NORTH