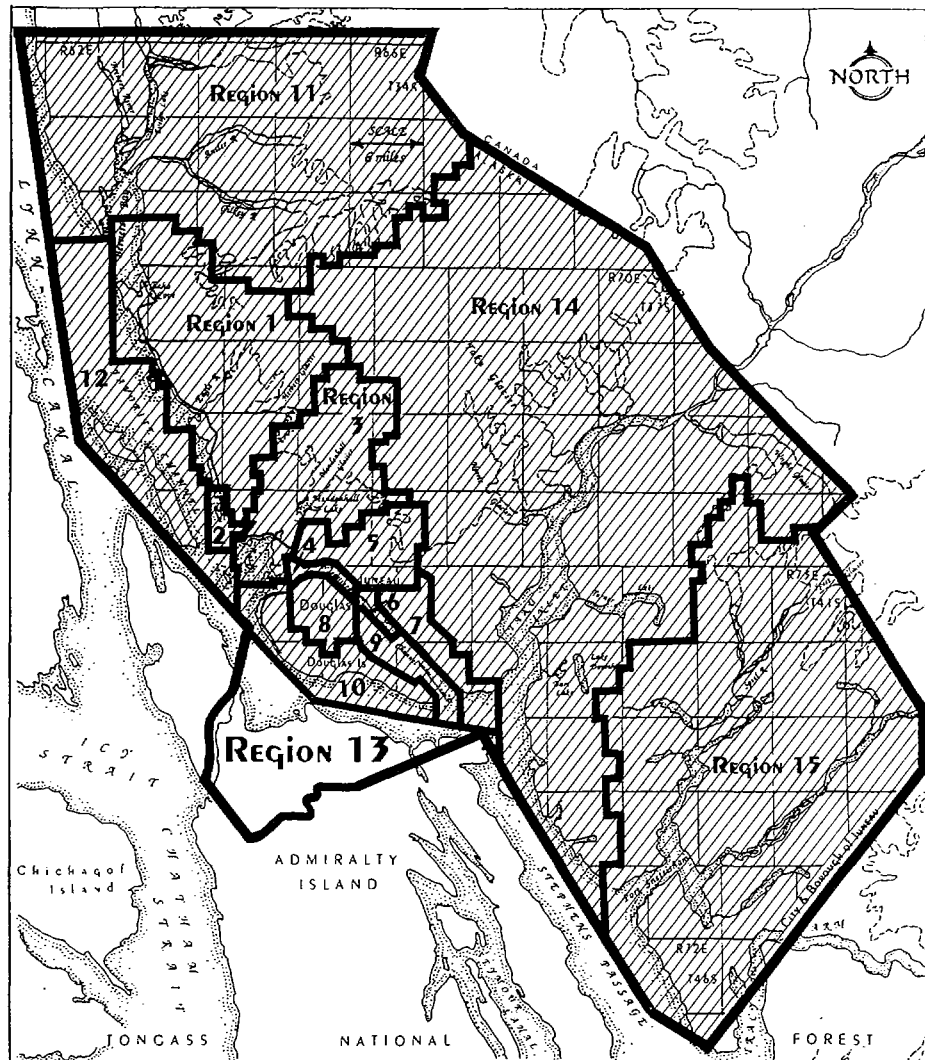


# Region 13 - Admiralty Island

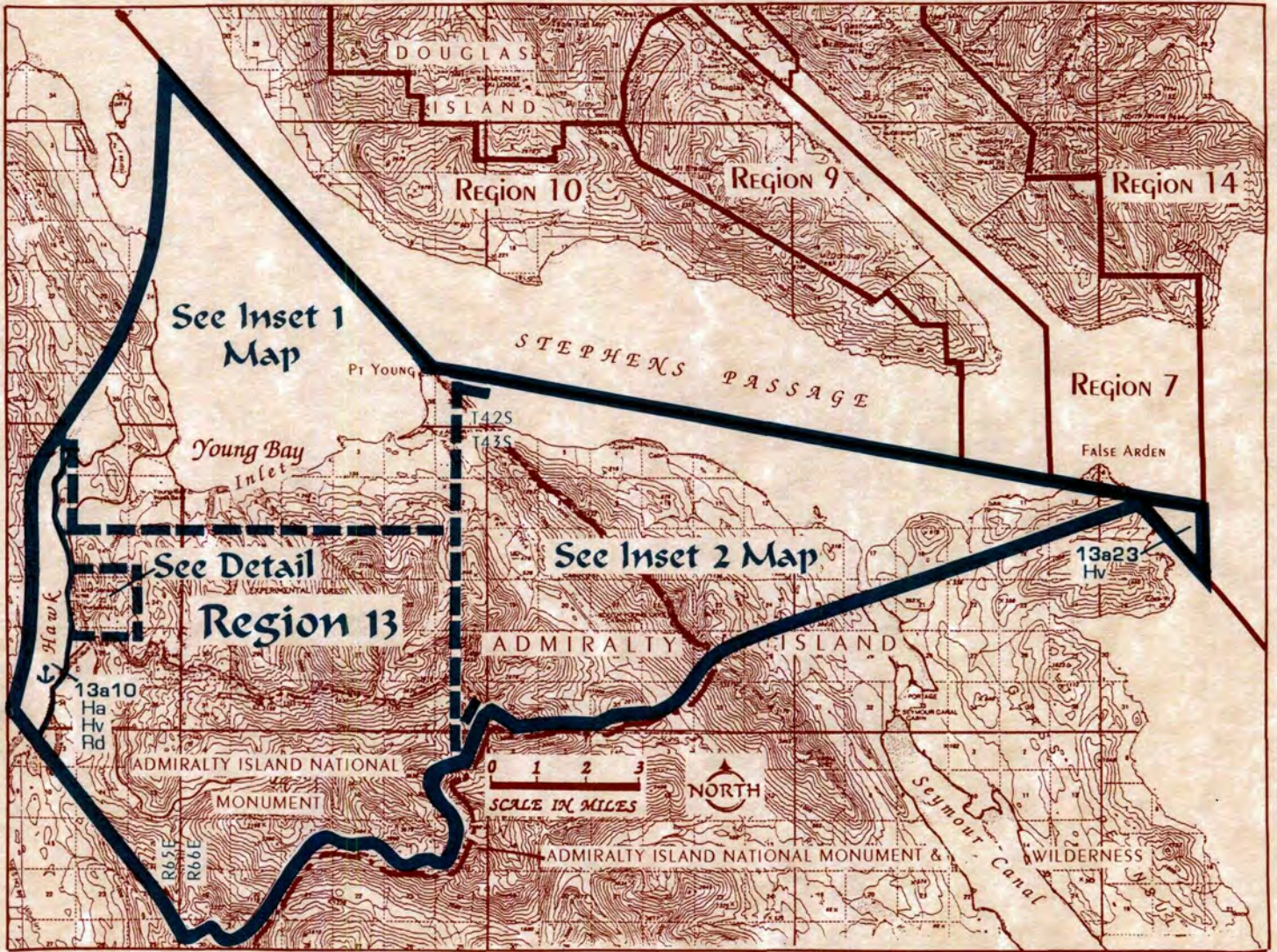
## Background

This region includes state tidelands, shorelands, and submerged lands adjacent to the northern part of Admiralty Island. The region includes lands in Hawk Inlet, and in Stephens Passage from Point Arden to Young Bay. The uplands in this region are mostly in USFS ownership and are managed as part of the Admiralty Island National Monument. Admiralty Island is renowned for its large populations of brown bear and bald eagles. Portions of Admiralty Island have high mineral potential. This region includes the site of the Greens Creek Mine, the largest silver-producing mine in North America. The mine has infrastructure developments on state tidelands in Hawk Inlet and Young Bay.

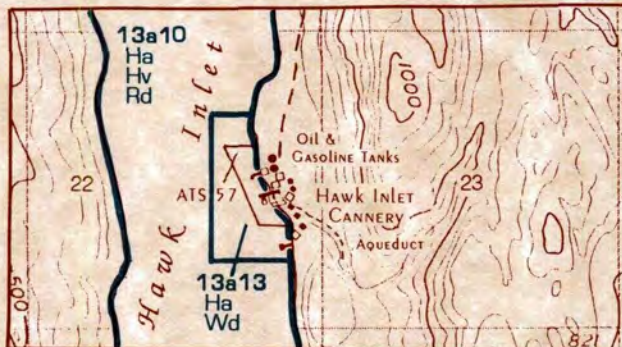


Location Map

# REGION 13 - Admiralty Island



## Detail



## Designations

- Ha Fish & Wildlife Habitat
- Hv Fish & Wildlife Harvest
- Rd Recreation - Dispersed
- Wd Waterfront Development
- ↕ Anchorage