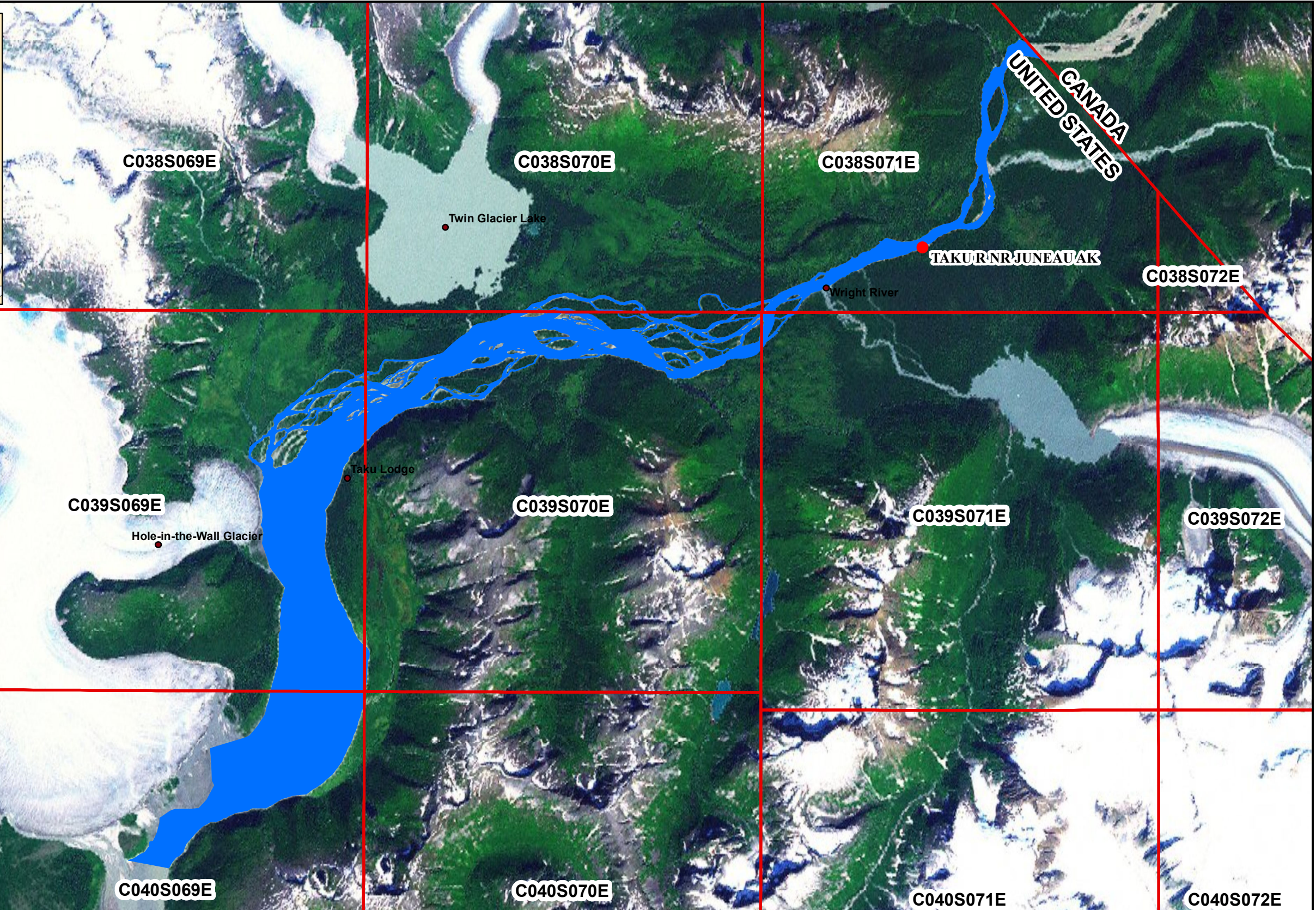




● USGS Stream Gages
■ Taku River



Map Produced Under
 Partnership Between
 Alaska Department of Natural Resources, Div of Mining Land and Water
 Public Access Assertion and Defense Unit
 and
 Alaska Department of Fish & Game

This map is based on the most recent data available; however the actual and/or historical location of the waters involved may differ from that shown on this map due to the changes in the waters over time. Land Status describes ownership types within a section. Please note that Land Status may not cover entire section; please refer to Master Title Plat for precise land ownership.

The State of Alaska makes no expressed or implied warranties (including warranties of merchantability and fitness) with respect to the character, function, or capabilities of this product or its appropriateness for any user's purposes. In no event will the State of Alaska be liable for any incidental, indirect, special, consequential or other damages suffered by the user or any other person or entity whether from use of the product, any failure thereof or otherwise, and in no event will the State of Alaska's liability to you or anyone else exceed the fee paid for the product.

Tidal influence line was placed in respect to NHD and NOAA CUSP datasets and is for representation purposes only.

0 3 6 Miles

BASE MAP: Alaska Mapped WMS Feed
 Projection: Albers Equal Area
 Waterbody Data: USGS National Hydrography Dataset 2007
 Map Printed: March 13, 2017

~State of Alaska~
**Recordable Disclaimer of Interest
 Application
 Taku River**