



## Sumitomo Metal Mining Pogo LLC

P.O. Box 145  
Delta Junction  
AK 99737 USA

TEL: +1 907 895 2841  
FAX: +1 907 895 2866  
URL: [www.smm.co.jp](http://www.smm.co.jp)



February 22, 2012

COR-12-023

Certified Mail #7011 0470 0003 4651 1857

Sharmon Stambaugh, Large Mine Coordinator  
State of Alaska  
Department of Natural Resources  
Office of Project Management and Permitting  
550 West 7<sup>th</sup> Avenue Suite 900  
Anchorage, Alaska 99501

Re: **Request for Amendment (Rev 1) to Plan of Operations F20129500 by Sumitomo Metal Mining Pogo LLC (Pogo) for an 77- Bed Addition to "D-Wing" Dorm at Lower Camp**

Dear Ms. Stambaugh:

Sumitomo Metal Mining Pogo LLC (Pogo) is requesting to amend Plan of Operations F20129500 to allow Pogo to construct a 77-bed addition to "D-Wing" dorm at Lower Camp (refer to **Figure 1** and **Figure 1.3a**). The Lower Camp is used for contractors. The addition to "D-Wing" is on previously disturbed ground. The extension will be tied into existing utilities (water, sewer, power, etc).

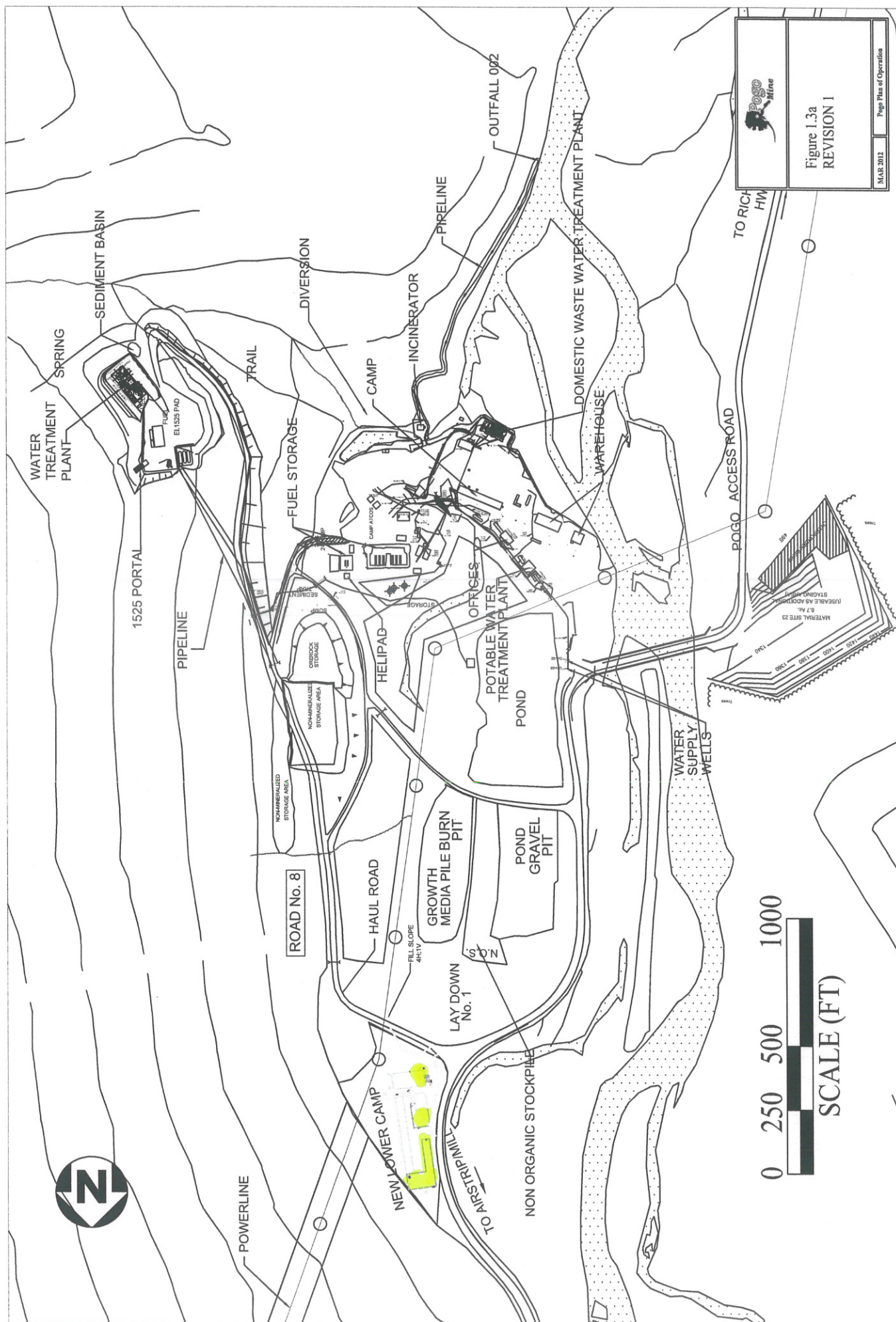
Due to an increase in mine development contractors, Pogo needs additional living accommodations in the lower camp area. Existing facilities are at capacity. The current capacity of the upper camp dorms (A,B, and C) is 249 and the lower camp dorms (D and E) is 126. The proposed 77-bed addition to D-wing is a modular building with a floor plan and layout as shown in **Figure 1**. Pogo would like to begin construction of the addition by April 2012 if possible. This project was discussed with Mr. Steve McGroarty during a meeting held on January 27, 2012 (please refer to Pogo's February 15, 2012 memo).

If you have any questions please give me a call at 907-895-2897 or email me at [sally.mcleod@smmpogo.com](mailto:sally.mcleod@smmpogo.com).

Sincerely,

Sally McLeod, CEM, REM  
Environmental Superintendant

Attachments: Figure 1 – Addition to D-Wing  
Figure 1.3a – Revision 1 Pogo Plan of Operations





**POGO MINE**  
**LOWER CONSTRUCTION CAMP**  
**DELTA JUNCTION, ALASKA**

DATE:	PROJECT NO:	DATE:
FILE:	DESIGN:	DATE:
ADDITION TO D-WING	DATE:	

**FIGURE 1**

022112

