

Pogo Plan of Operations

Submitted to:

Alaska Department of Environmental Conservation
Division of Water
610 University Avenue,
Fairbanks, Alaska 99709

Alaska Department of Natural Resources
Division of Mining, Land, and Water
550 West 7th Avenue, Suite 900D
Anchorage, AK 99501-3577

Prepared by:



Sumitomo Metal Mining Pogo LLC
P.O. Box 145
Delta Junction, Alaska 99737

November 2011



Table of Contents

1.0	APPLICANT INFORMATION.....	1
1.1	Claim names.....	1
1.2	Individual Completing Application	1
1.3	Business Address	1
1.4	Business Telephone	1
1.5	Corporate Information	1
2.0	SITE ACCESS.....	2
2.1	Location	2
2.2	Access to Site	2
2.3	Mine Security	4
3.0	OPERATING PLAN / FACILITY DESCRIPTION	5
3.1	Facility Activity	5
3.2	General Operating Criteria	7
3.3	Environmental Management	7
3.3.1	Environmental, Health and Safety Policy	7
4.0	ANCILLARY FACILITIES	9
4.1	Power Supply & Backup.....	9
4.2	Maintenance/Warehouse Complex/Administration	9
4.2.1	Maintenance Facility	9
4.2.2	Warehouse	9
4.2.3	Administration Building	10
4.3	Communications System	10
4.3.1	Microwave Telephone System	10
4.3.2	Radio System	10
4.4	Potable Water Supply	11
4.5	Firewater.....	11
4.6	Upper Camp Facility	11
4.7	Sewage Treatment.....	12
4.8	Site Roads	12
4.9	Airstrip	13
4.10	Meteorological Stations.....	13
5.0	GEOLOGY & MINING	14
5.1	Geology & Ore Resources	14
5.2	Mine Plan.....	15
5.2.1	Mine Access	15
5.2.2	Development.....	16
5.2.3	Mining Method	18
5.2.4	Ore Haulage	18



5.2.5	Development Rock Haulage	18
5.3	Temporary Ore Storage	20
5.4	Development Rock Segregation & Storage	20
5.5	Backfill Distribution.....	21
5.6	Mine Equipment	22
5.6.1	Mobile Equipment	22
5.6.2	Fixed Equipment	24
5.7	Mine Facilities	24
5.7.1	Ventilation.....	24
5.7.2	Conveyor	25
5.7.3	Underground Equipment Maintenance.....	25
5.7.4	Electrical Distribution System.....	25
5.7.5	Underground Communications	25
5.7.6	Compressed Air	26
5.7.7	Service Water	26
5.7.8	Refuge Stations	26
5.7.9	Emergency Egress.....	26
5.7.10	Fueling.....	27
5.7.11	Diamond Drilling	27
6.0	MILLING	28
6.1	Milling Facilities.....	28
6.1.1	Grinding.....	29
6.1.2	Gravity Circuit	29
6.1.3	Flotation & Concentrate Re grind.....	30
6.1.4	Cyanide Leach & Carbon-in-Pulp (CIP).....	30
6.1.5	Carbon Stripping, Electrowinning, Refining	30
6.1.6	Cyanide Detoxification	31
7.0	POGO MINE WASTE MANAGEMENT	32
7.1	Paste Backfill	32
7.2	Surface Tailings Treatment Facility	32
7.2.1	Drystack Tailings Facility	33
7.2.2	RTP Facility	37
7.3	Other Wastes.....	38
7.4	Waste Rock Storage	40
8.0	WATER MANAGEMENT	41
8.1	Overview.....	41
8.2	Overall Water Collection, Treatment & Discharge Strategy	42
8.3	Process Water	42
8.4	Mine Water	43



8.5	Surface Water & Runoff	44
8.5.1	Drystack Runoff	45
8.5.2	Recycle Tailings Pond (RTP)	45
8.6	Excess Water Management, Treatment & Discharge	45
8.6.1	Chemical Treatment Process System (WTP#2)	45
8.6.2	Off-River Treatment Works (ORTW)	46
8.6.3	Site Runoff & Discharge.....	47
8.6.4	Water Treatment Plant #2 (WTP#2) Effluent Quality	48
8.7	Fresh Water.....	48
8.8	Stormwater	48
9.0	REAGENT MANAGEMENT.....	49
9.1	Underground Storage	49
9.1.1	Supplies.....	49
9.1.2	Explosives	49
9.2	Surface Storage.....	49
9.2.1	Mill Reagents.....	49
9.2.2	Grinding Media	51
9.2.3	Fuel & Propane.....	51
10.0	MONITORING PLAN OUTLINE	53
10.1	Quality Assurance Project Plan or QAPP	53
10.2	Pogo Mine Monitoring Plan	53
11.0	TEMPORARY SHUTDOWN.....	54
11.1	Short-term Shutdown Plan.....	54
11.2	Long-term Shutdown Plan.....	54
12.0	RECLAMATION	55
12.1	Reclamation and Closure Phases	56
12.1.1	Phase I Reclamation of construction disturbance.....	56
12.1.2	Phase II Reclamation with concurrent mining.....	56
12.1.3	Phase III Final reclamation of mine site.....	56
12.1.4	Phase IV Water treatment and post-closure reclamation	56
12.1.5	Phase V Post-closure monitoring.....	57
12.2	Post-mining Land Use.....	57
13.0	REFERENCES.....	58



List of Tables

Table 5.1: Development Rock Quantities (tons)	21
Table 8.1: Expected Mine Inflows.....	43
Chart 8.3: Discharge to ORTW 2006-2010.....	47

List of Figures

Figure 1.1: General Location Map	3
Figure 1.2: General View of Pogo Development.....	6
Figure 5.1: 3D View of Orebodies and Underground Development	17
Figure 5.2: Cut-and-Fill Mining Cross Section	19
Figure 5.3: Backfill Cycle.....	23

Appendices

Appendix A: Pogo Mine Claim List	
Appendix B: Figures	
Appendix C: Pogo Quality Assurance Plan	
Appendix D: Pogo Mine Monitoring Plan	
Appendix E: Pogo Reclamation and Closure Plan	
Appendix F: Pogo DSTF Construction and Maintenance Plan	
Appendix G: Pogo RTP Operating and Maintenance Manual	



1.0 APPLICANT INFORMATION

1.1 Claim names

The Pogo Mine property consists of 1,281 state mining claims covering an area approximately 41,880 acres. The Pogo claim block lies in Sections 13, 14, 22-27, and 34-36 within T5S, R14E, Sections 18, 19, and 29-34 within T5S, R15E, Sections 1-3, 10-15, and 36 within T6S, R14E, and Sections 3-11, 14-23, and 29-32 within T6S, R15E, Fairbanks Meridian. The claim names, claim types, and claim owners for claims associated directly with Pogo Mine are listed in **Appendix A**.

1.2 Individual Completing Application

As the Reclamation Plan is incorporated into the Plan of Operations, the signature below fulfills the requirement of Alaska Administrative Code 11 AAC 97.310(a).

Chris Kennedy, General Manager, Pogo Mine

Date

1.3 Business Address

Sumitomo Metal Mining Pogo LLC
P.O. Box 145
Delta Junction, Alaska 99737

1.4 Business Telephone

Phone: (907) 895-2864
Fax: (907) 895-2866

1.5 Corporate Information

Sumitomo Metal Mining Co., Ltd.
Tokyo, Japan
Sumitomo Corporation
Tokyo, Japan



2.0 SITE ACCESS

2.1 Location

Sumitomo Metal Mining Pogo LLC (Pogo) is the operator of the Pogo gold mine, located 38 miles northeast of Delta Junction, Alaska (see **Figure 1.1**). This Plan of Operations (POO) outlines Pogo Mine activities through June 2010 and reflects site experience gained since operations began in 2005. Where appropriate, it builds upon the documents used for project permitting, including the 2002 Water Management Plan and Appendices, the 2003 Plan of Operations, and the 2003 Reclamation and Closure Plan. Where appropriate and where new information is available, this plan of operations supersedes any prior documents.

2.2 Access to Site

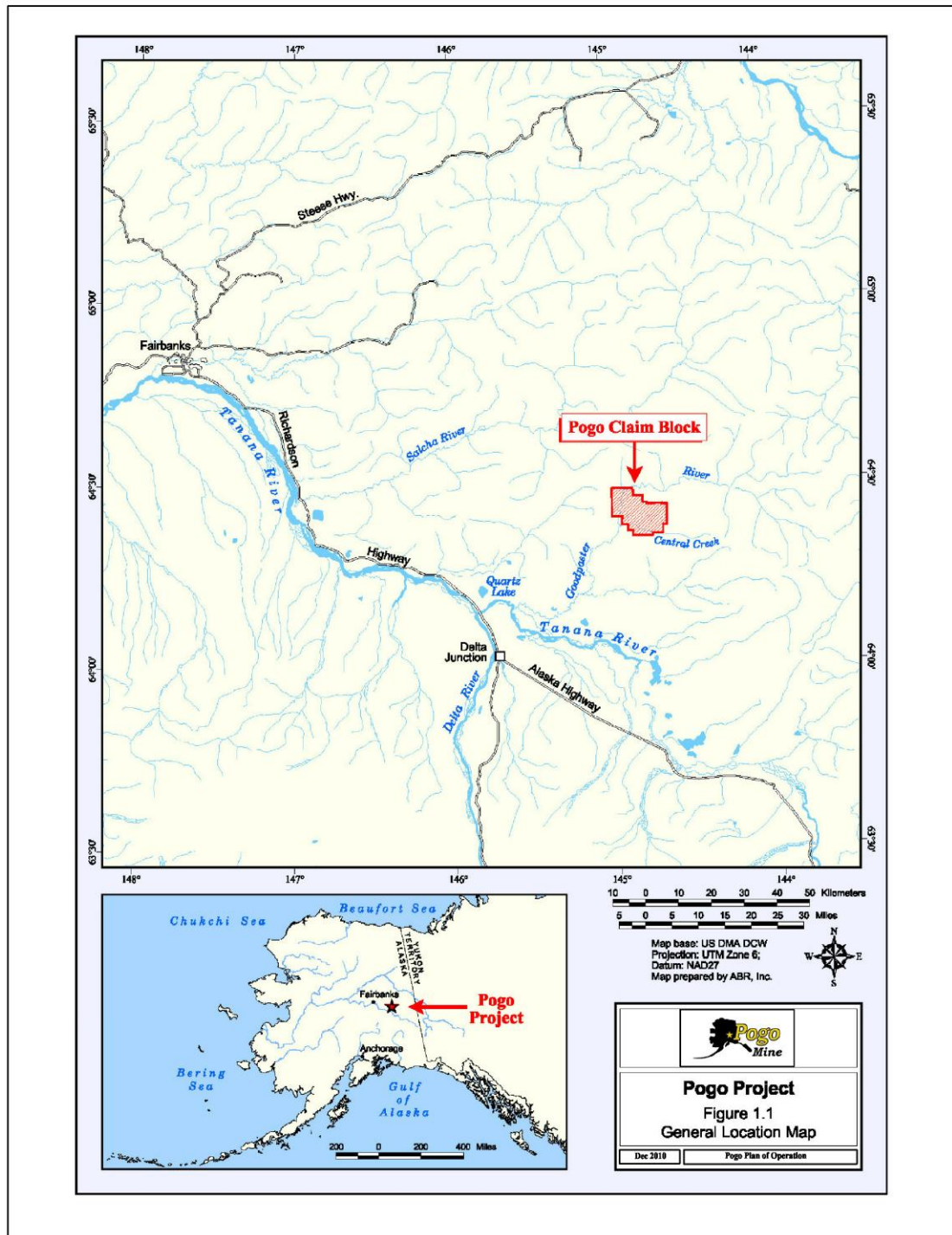
A 49 mile long, all-season road constructed along the Shaw Creek hillside route provides safe, reliable access to the Pogo property. Access is gained from the end of Shaw Creek Road, two miles from the Richardson Highway. The road crosses over the Trans-Alaska Pipeline System (TAPS), 2.5 miles from the Shaw Creek Road. There are four single-span bridges over creeks along the route, and one four span bridge crossing the Goodpaster River. All bridges are single lane with a maximum axle load rating of 60 tons and a posted maximum speed of 10 miles per hour (mph). The road and power transmission line routes are shown in **Figure 4.1**.

The access road is a controlled access industrial road. A security gate near the departure point at the end of Shaw Creek Road provides access control. A large sign stating the road is "private" and therefore closed to unauthorized traffic is posted at the security gate and at the TAPS crossing.

The design speed limit for the all-season road is 35 to 45 mph. The highest elevation along the road is 3,300 feet above mean sea level (ft amsl); the lowest 970 ft amsl. Roadside berms and guardrails are installed where appropriate. Radio contact is maintained between all vehicles and mine security.



Figure 1.1: General Location Map





All drivers undergo a road safety briefing prior to driving on the Pogo access road, and regular bus drivers are trained in first aid, emergency response. Buses carry emergency response equipment. Properly trained and qualified emergency response personnel will respond to accidents and medical emergencies on the access road. An environmental response team will respond to help, coordinate and cleanup spills as necessary.

Employees are transported onto the mine site by bus or appropriate company vehicles.

Summer and fall road maintenance includes grading and repairing of potholes, ruts and washboards, replacing damaged markers and signs, and maintaining drainage and sediment control structures. Winter and spring maintenance includes snow removal, road scarifying for improved traction, and drainage maintenance. Emergency maintenance is provided as necessary. Dust is minimized by enforcing low traffic speeds and using water or suppressing agents as needed.

Additional details on construction, operation, and reclamation of the access road is contained in the right-of-way application.

2.3 Mine Security

The mine security plan includes a combination of measures such as security personnel, closed-circuit television surveillance, security lighting, and fencing to ensure personnel and product security.

Security is provided at the main entrance gate from 6 am to 8 pm each day; all traffic on the road is monitored from the gate. Mine site security personnel monitor the remote security gate and road transport after hours (8 pm to 6 am) each day.



3.0 OPERATING PLAN / FACILITY DESCRIPTION

3.1 Facility Activity

Pogo Mine is an underground mine that feeds gold ore to the mill at a rate of approximately 3,000 tons per day (tpd) and is permitted to feed gold ore at a rate of up to 3,500 tpd. The property produces between 380,000 to 400,000 ounces of gold annually.

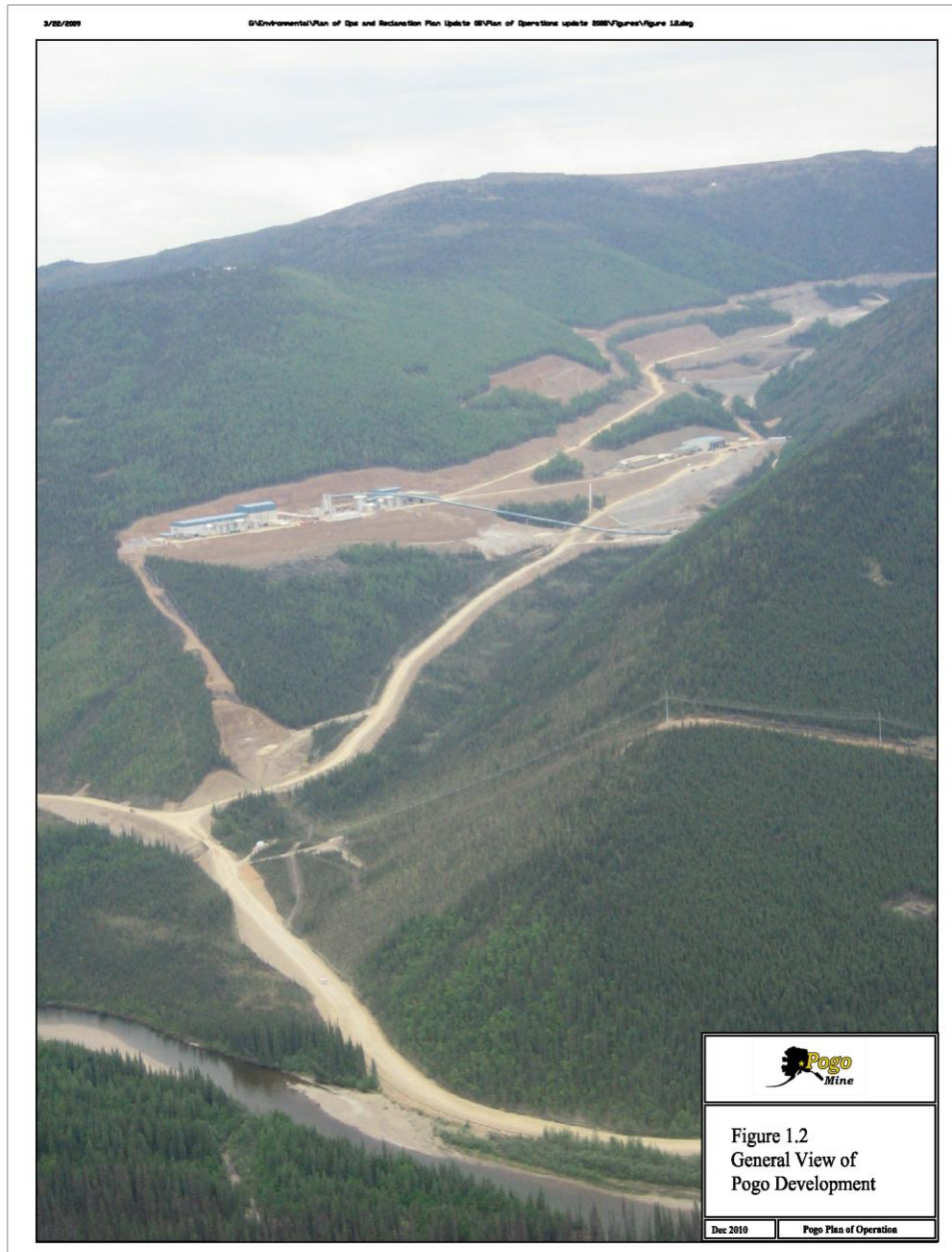
The mine consists of the following major elements:

- Underground cut-and-fill mining with conveyor access for transfer of ore to the surface;
- Surface gold mill for gold recovery through gravity concentration, flotation and cyanide leaching;
- Tailings preparation facilities, including cyanide detoxification and filtration, to produce paste backfill for the underground mine workings and dewatered tailings material suitable for placement in a drystack facility on the surface;
- Drystack tailings facility (DSTF) to disposed the dewatered tailings materials and waste rocks and the recycle tailings pond (RTP) to collect the seepage and runoff water from the drystack tailing facility;
- 250 person upper camp and 126 person lower camp with recreation and catering facilities for each;
- Transmission line along the Shaw Creek Hillside route, and on-site electrical distribution system;
- 49 mile all-season road constructed along the Shaw Creek Hillside route; and
- A water management system that maximizes recycling and treats all waters affected by the project in accordance with applicable federal and state legislation.

An aerial photo of the mine is provided on **Figure 1.2**, As-built drawings are **Figures 1.3 – 1.3d** in **Appendix B** for the project facilities.



Figure 1.2: General View of Pogo Development





3.2 General Operating Criteria

Some general operating criteria for the mine are outlined below.

Milling Rate

- Average operating production 3,000 tpd
- Average eventual production..... 3,500 tpd

Mining Rate (Ore)..... same as milling rate

Current projected mine life @ 3,000 tpd..... 7 years

Development rock to surface for remaining 7 years of mine life..... 2.6 million tons

Employees and contractors required to operate facility

- @ 2,500 tpd..... 297
- @ 3,500 tpd..... 360

Energy requirements for mine operation

- @ 2,500 tpd..... 10 mega watts (MW)
- @ 3,500 tpd..... 14 MW

3.3 Environmental Management

3.3.1 *Environmental, Health and Safety Policy*

Pogo Gold Mine is located northwest of Delta Junction, Alaska. The Mine is operated by Sumitomo Metal Mining Co., Ltd. and is a Joint Venture between Sumitomo Metal Mining Co., Ltd. and Sumitomo Corporation.

Pogo Mine recognizes Environment, Health and Safety management as a core competency and value and is committed to protecting employees, contractors and visitors from safety and health hazards and minimizing environmental impact arising from the Operation. The full commitment and active participation of all employees, contractors and visitors is required in achieving this goal.

To meet this commitment, Pogo Mine will:

1. Strive to achieve a goal of zero workplace injuries;
2. Meet or exceed all Environment, Health and Safety regulations, laws, permits and voluntary commitments to which Pogo has subscribed;
3. Identify hazards and mitigate risk through proactive elimination or control;



4. Reduce waste and pollution through prevention or control measures;
5. Train employees in safe work procedures and standards and highlight the personal commitment and responsibility of each employee to work safely and prevent injury to themselves and others and to safeguard the assets of Pogo;
6. Train employees on environmental policies and guidelines and emphasize the responsibility of each employee to act as good stewards and to safeguard the environment;
7. Ensure that all contractors, suppliers, visitors and other third parties understand and adhere to the Pogo Mine Environment, Health and Safety policy, standards, procedures and guidelines;
8. Ensure transparency by effectively communicating to all stakeholders our performance on the Environment, Health, Safety and Operational aspects of our Business; and
9. Strive to continually improve our management and performance in the Environment, Health and Safety areas.

Measurement of our performance in Environment, Health and Safety will be tracked against established goals and key performance indicators; these goals will be reviewed on a regular basis to promote continuous improvement.



4.0 ANCILLARY FACILITIES

4.1 Power Supply & Backup

Power is supplied to the mine via a 50 mile long, 13.8 kilo volt (kV), three phase transmission line constructed along the Shaw Creek Hillside access route (see **Figure 4.1** in **Appendix B**). The transmission line is constructed of wooden H-poles with horizontal conductors. The Pogo transmission line is connected to Golden Valley Electric Association's, Alaska (GVEA's) Fairbanks to Delta Junction transmission line at a substation on the west end of the project near the trans-Alaska pipeline north of Shaw Creek. The terminus substation is located adjacent to the mill building in the Liese Creek Valley.

At the end of mine life, the transmission line will be removed and the right-of-way reclaimed. Additional details on the power line construction, operation and reclamation are contained in the right-of-way application that is part of this project documentation series.

Site backup power is supplied by two 1,000 and one 2000 kilo watt (kW) generators at the mill, paste backfill plant and upper/lower camps. This is sufficient to power key motors, pumps, water treatment, and lighting both underground and on surface on an emergency basis.

4.2 Maintenance/Warehouse Complex/Administration

4.2.1 Maintenance Facility

The maintenance area contains three maintenance bays, a welding bay and wash bay. Major repairs and rebuilds are performed at this facility. Firewall protection between adjoining walls of the complex has been installed. The maintenance facility also has tool storage areas and offices for administrative groups.

4.2.2 Warehouse

A warehouse facility with heated storage inside and cold storage outside is adjoined to the maintenance facility with firewalls between. The warehouse includes offices for the warehouse supervisor, inventory buyer and inventory control and provides delivery access and unloading points for vendor supplies. Two smaller warehouses located in



the lower camp, as well as a number of lower yard locations are utilized for the storage of warehouse inventory items.

4.2.3 Administration Building

The main administration building is a two-story, clad, modular structure containing the following:

- Offices and cubicles for senior staff, administrative, supervisory and technical personnel;
- Reception area;
- Conference rooms;
- Lunch and training room;
- Print and photocopy room;
- Washrooms;
- Clean and dirty locker and shower facilities;
- Communications room; and
- Miscellaneous storage areas.

4.3 Communications System

The two major components of the Pogo communications system are a microwave-based telephone system and a local radio repeater system. These are described below. Also, in case of a loss of the microwave based communication system, the site utilizes satellite telephones in such emergency situations.

4.3.1 Microwave Telephone System

The microwave telephone system combines secure voice, fax, Internet and computer networking into a single network infrastructure that accesses telephone and Internet gateways.

4.3.2 Radio System

A radio repeater system enables omni-directional, two-way communication within an approximate 15 mile radius. The repeater works in conjunction with preprogrammed



5 watts (W), handheld radios. The repeater consists of a 25 W radio powered by a bank of lead-acid batteries, recharged by a self-regulating solar panel and a wind generator. The repeater utilizes duplex frequencies licensed to Pogo for their exclusive use. The repeater is connected to a bi-directional antenna that is directed toward Delta Junction and Pogo camp.

4.4 Potable Water Supply

Water is collected from two 8-inch diameter wells, at depths of 61.5 and 53.3 feet below ground surface (ft bgs). They are located near the Goodpaster River and are in direct influence of surface waters. Two potable water plants (PWSID#) 2372643 and 2372658 treat and distribute the water respectively to the lower and upper camps. The water is ozonated, filtered, disinfected with chlorine, and a corrosion inhibitor, orthophosphate, added prior to distribution.

The potable system for upper camp was designed for a maximum of 25,000 gallons per day (gpd) (at max 28 gallons per minute (gpm)) and the lower camp was designed for a maximum of 7,500 gpd (at max of 20 gpm). Both potable water systems are operated within the limitations described in Pogo Mine Potable Water System Permits PWSID 372643 and PWSID 372685.

4.5 Firewater

The firewater system utilizes an 180,000 gallons surge tank that is sourced from the drinking water wells.

4.6 Upper Camp Facility

The upper employee camp is located in the Liese Creek Valley. The camp is a pre-engineered modular structure capable of housing approximately 250 people. The camp, shown on **Figure 1.3c** in **Appendix B**, includes the following:

- Single status housing units;
- Washroom and shower facilities;
- Kitchen facilities;
- Dining area;
- Recreation area;
- Entertainment area; and



- Laundry facilities.

The lower camp is used for contractors and the exploration group. A new lower camp was commissioned in January 2010 as shown in **Figure 1.3a** in **Appendix B**, in order to provide a suitable accommodation for the mining contractors. The remaining single “B wing” from the construction camp is utilized for year round contractor accommodations until camp closure when it will be demobilized. The location of the “new” lower camp is on previously disturbed ground and was raised approximately 4 feet to the 100 year flood elevation. The old exploration camp has been demolished. These facilities include the following:

- Double or single housing units;
- Washroom and shower facilities;
- Kitchen facilities;
- Dining area;
- Recreation area;
- Entertainment area; and
- Laundry facilities.

4.7 Sewage Treatment

An Alaska Department of Environmental Conservation (ADEC)-approved 72,000 gpd sewage treatment plant is located near the 1525 portal as shown on **Figure 1.3a** in **Appendix B**. This treatment plant services both the upper and lower camps.

The sewage treatment plant is connected to the lower camp and upper camp with heat traced gravity flow lines to lift stations. The sewage plant uses ultra violet (UV) effluent disinfection for final treatment. The treated effluent is discharged to the Goodpaster River at an average rate of 23 gpm (Outfall 002). The effluent limits are provided in Pogo Mine Alaska Pollutant Discharge Elimination System (APDES) Permit No. AK0053341.

4.8 Site Roads

Site roads are shown on **Figures 1.3 to 1.3d** in **Appendix B**.



4.9 Airstrip

A 3,000 ft long x 75 ft wide gravel airstrip was built to support construction operations when winter road access is not available. The airstrip is maintained for the life of the operations and is available until Phase IV Water treatment and post-closure reclamation (refer to **Figure 1.3b** in **Appendix B**).

4.10 Meteorological Stations

New Meteorological (Met) Stations will be located on Pogo Ridge (refer to **Figure 1.3e** in **Appendix B**) and Pogo Airstrip (refer to **Figure 1.3f** in **Appendix B**). Their purpose is to collect data to support air quality and hydrologic modeling. Each station will have a ten meter guyed tower with a two foot by two foot concrete base pad. The Datalogger™ system will be placed in a weather proof enclosure at the base of each tower. Each station will measure the following parameters:

- (2) Wind Speed (m/s) (at 10-meters);
- (2) Wind Direction (degrees) (at 10-meters);
- (2) Sigma Theta (degrees);
- (2) Air Temperature and vertical temperature difference (degree C) (at 2 meters and 10 meters elevation);
- (2) Solar Radiation (W/m²); and
- (1) Heated Precipitation gauge with wind shield (inches).

Each of the monitoring stations will be powered by electrical service with a backup battery and solar power system. The airstrip site is readily accessible by vehicle; however, the ridge site is accessible by helicopter or ATV only.



5.0 GEOLOGY & MINING

5.1 Geology & Ore Resources

The gold resource within the Pogo Upland Mining Lease includes sub-parallel quartz veins hosted in a sequence of amphibolite-grade, paragneiss and orthogneiss of probable Proterozoic to mid-Paleozoic age. Mid-Cretaceous, granitic, plutons and dykes intrude the gneisses, which in turn are generally cut by the veins. A post-vein, diorite pluton has been age dated at 94 million years before present (Ma) age, constraining the minimum age of the deposit.

The gneissic rock sequence is interpreted as part of the Lake George sub terrane of the Yukon-Tanana terrane, which extends from Fairbanks into the Yukon Territory. Typical lithologies include intercalated biotite-quartz-feldspar gneiss, hornblende-rich gneiss, chlorite-sillimanite gneiss, calc-silicate gneiss, quartz-rich gneiss, and granitic orthogneiss. Well developed and regionally extensive foliation and folding within the gneiss largely pre-dates the ore vein structures.

The granitoid intrusive rocks are considered the source of the gold-bearing fluids that contributed to the gold endowment at Pogo. In particular, the Goodpaster batholith to the north of the deposit is thought to be the general source of the dikes and gold veins observed in the mine. Similar granitoids have a causative relationship to a number of "plutonic-related" gold deposits in the region, including the Fort Knox deposit near Fairbanks (McCoy et al., 1997). Intrusive rocks within the mine area include granite, quartz monzonite, quartz diorite, diorite and basalt. Most intrusive rocks are likely of Late Cretaceous age as suggested by samples that yield a range of ages from 107 Ma to 92 Ma, using U-Pb and Ar40/Ar39 age-dating techniques. Some of the dikes appear to utilize the same structures as the ore veins.

Several fault sets, exhibiting a range of orientations, are documented within the mine area. Drill data and underground exposures reveal widespread faults with steep northeast to east orientations. The Liese Creek and Graphite faults are two northwest striking faults present in the mine area which have significant contributions to overall inflows of water from surface. Low angle faults, though not well expressed on the surface, are also well documented underground, particularly where they bound Liese-type quartz veins. The Liese-type veins are low-angle sub-parallel veins currently comprising the majority of the Geologic Resource.



Mine Reserves, as of end-of-year 2009, lay entirely within three of these 'Liese' veins: L1, L2, and L3 (see **Figure 5.1**). As of year-end 2009, Proven and Probable Reserves stood at 6 million metric tonnes of 14.7 grams per ton (g/t) material for 2.8 million ounces. The Geologic Resource, outside the Reserve, stood at 4.5 million metric tonnes of 11.42 g/t material for 1.66 million ounces, including 2.9 million metric tonnes of Inferred Resource at a grade of 8.72 g/t.

Fluid inclusions from the Liese veins indicate un-mixing of a dense, carbonic, moderately saline fluid, with most gold deposition occurring at temperatures of 250 to 380 degrees Celsius (C) when the carbonic phase boiled. Methane is occasionally observed in the fluid, indicating fairly reduced conditions, and hence bisulfide complexing of the gold. Isochores for the fluids indicate depositional pressures of approximately 2 kilo bars (kbar), or 7 km lithostatic.

As mineralizing fluids boiled sulfide complexes destabilized, causing Au, Bi, As, and Te to come out of solution. These elements are correlated in sampling, with the best correlation being between Au and Bi at 0.89. Visual inspection of drill core from the L1 and L2 veins indicates that arsenopyrite, pyrite, pyrrhotite, loellingite, chalcopyrite, bismuthinite, native bismuth, and native gold are present in most vein intercepts. Galena, sphalerite, molybdenite, and tetradymite have also been noted but they are not common. Maldonite and a variety of Bi-Pb-Ag tellurides have been noted in polished sections. Native gold accounts for 95.5% of the total gold with 2.1% as maldonite, and 2.4% in solid solution with loellingite, arsenopyrite, and pyrite. Sulfides generally average less than 3% for a given Liese vein intercept.

5.2 Mine Plan

5.2.1 Mine Access

Three portals are used to provide safe and efficient access to the Pogo ore body, as listed below. The number used to refer to each portal represents their elevation above sea level in feet.

- 1525 portal that was constructed during the advanced exploration phase;
- 1875 portal in the Liese Creek Valley; and
- 1690 portal in the Liese Creek Valley.

The 1525 portal is used primarily for intake ventilation and is also used for access for mining contractors. The 1875 portal is the primary access for workers, supplies,



equipment and provides intake ventilation. The 1690 portal is used primarily for conveyor access to the mine and for exhaust ventilation.

5.2.2 Development

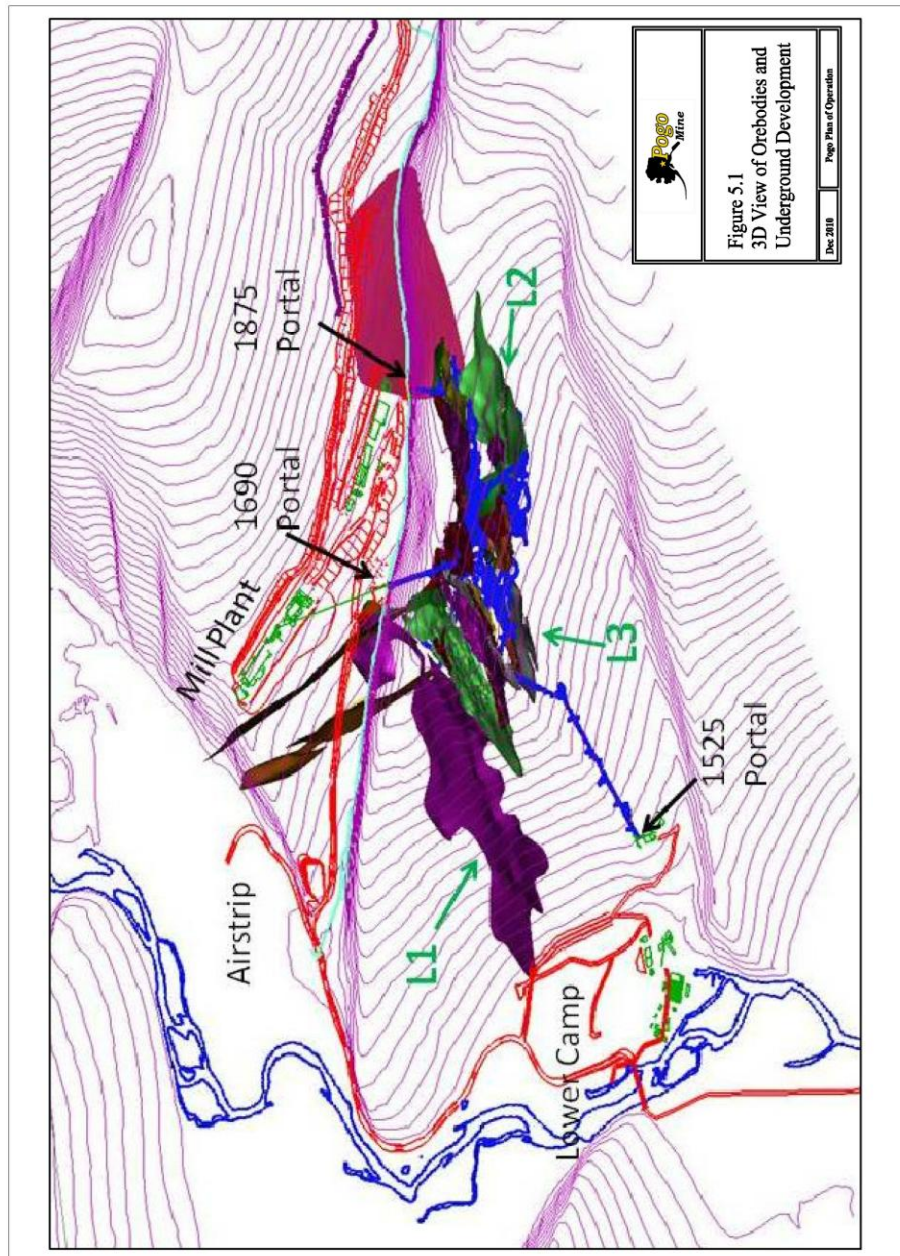
Underground development consists primarily of lateral and ramp development, with some raise development for ventilation and emergency egress.

The ore body is accessed via a series of ramps and stope access drifts. Ramps have nominal dimensions of 19 ft wide x 16 ft high. They are driven at a 15% grade with flattened segments at stope access intersections, resulting in an average grade of 13.5%. The ramps are located a minimum of 50 ft from the footwall of the ore body.

Stope access drifts are developed from the haulage ramps at vertical intervals of 50 ft and driven perpendicular to both the ramp and the strike of the stope it accesses. Stopes are mined in both directions from the stope access drift intersection to the lateral extents of the ore zone. The access drifts are designed near the center of the stope's strike length to maintain two active faces for the majority of the stope's life.

Figure 5.1 shows a 3D rendering of the expected development.

Figure 5.1: 3D View of Orebodies and Underground Development





5.2.3 Mining Method

Cut-and-fill mining is the primary mining method used at Pogo. This method is selective and yields a high overall ore recovery at a low dilution factor, as mining conforms to the shape of the deposit. All production drilling is conducted by rubber tired drill jumbos. After the stopes are mined, paste backfill is used to fill all mining voids. A simplified cross-section of cut-and-fill mining is shown in **Figure 5.2**. Mining equipment includes two-boom electric hydraulic jumbos, LHD units, rockbolters, service vehicles and explosive loading trucks. Mechanized rockbolters are used to support the ground in stopes greater than 15 ft x 15 ft, smaller stopes are supported with hand held jackleg drills.

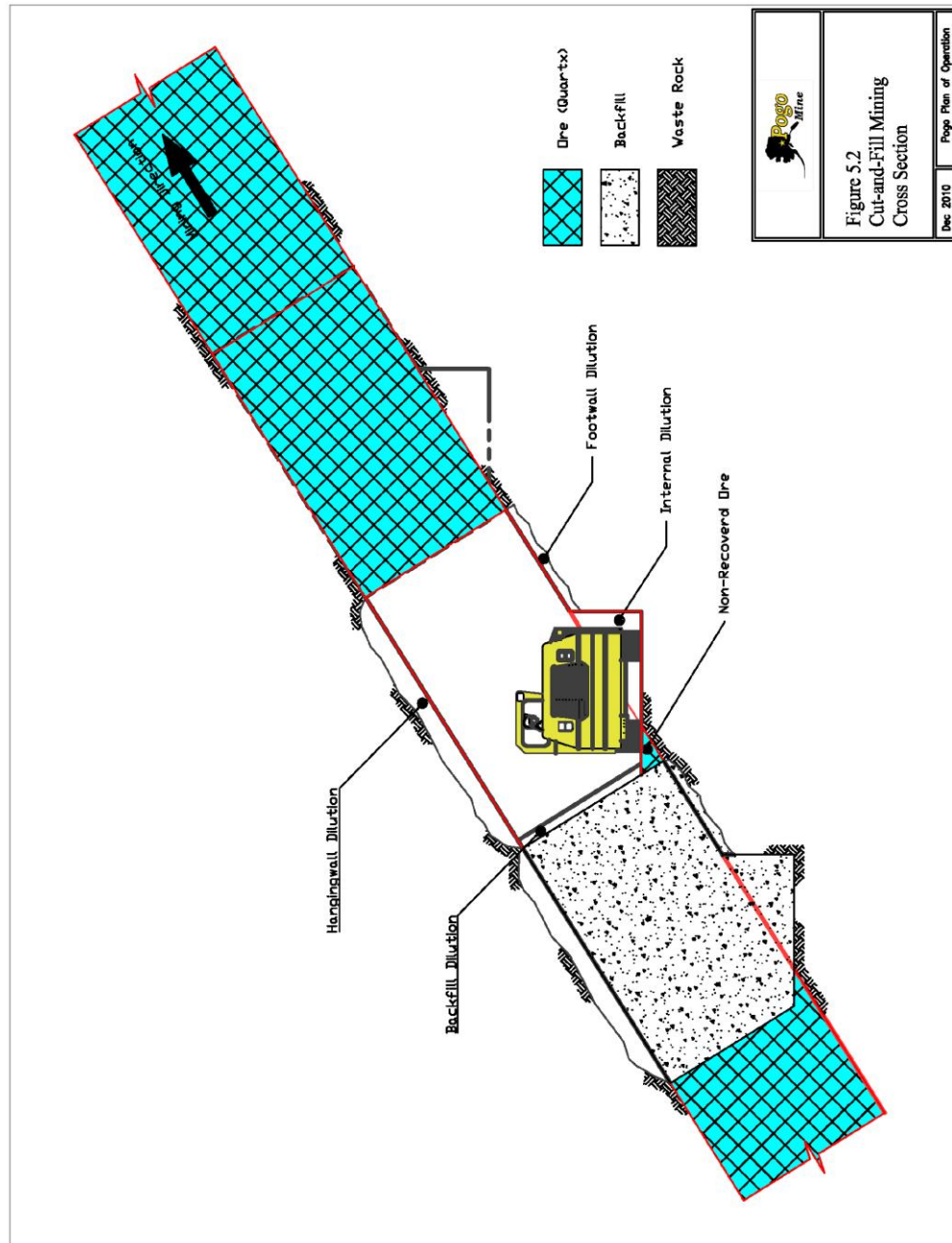
To maximize ore recovery along the contacts and to minimize ore loss, breasting, slashing and benching is carried out in the stopes as a final cleanup of remaining ore prior to backfilling.

5.2.4 Ore Haulage

Ore is hauled from the stopes to the underground ore storage bin using 9 yd³ LHD units and 50 ton haul trucks. The ore bin is fitted with a grizzly and a hydraulic rock breaker to reduce oversize material. Ore from the bin is fed onto a conveyor with a pan feeder and transported to the surface coarse ore bin for feed into the mill.

5.2.5 Development Rock Haulage

Development rock is trucked to the surface via the 1525 and 1875 portals and placed according to the rock segregation plan described in **Section 5.4**.

Figure 5.2: Cut-and-Fill Mining Cross Section



5.3 Temporary Ore Storage

As a normal part of mining, ore is produced at different rates in comparison to the steady operations of the mill. Mining operations store excess ore underground when possible. When this is not possible, the excess ore is stored at a temporary surface stockpile beneath the supply conveyor to the mill just above the 1690 portal. Ore from this temporary stockpile is hauled to the mill when the conveyor requires maintenance or back underground to provide steady mill feed. This temporary stockpile has a high turnover rate to reduce the oxidation potential.

5.4 Development Rock Segregation & Storage

Development rock is mined, brought to surface, segregated by individual blasted rounds, and held for assay (see **Table 2.1** for quantities). When the assays are complete, the material is classified as "mineralized" or "non-mineralized" based on the standard operating procedure for rock segregation that is summarized below.

To classify the rock, drill cuttings from blast holes that comprise each development blast are sampled and assayed on site. If the material is above either 0.5% sulfur or 600 milligrams per kilogram (mg/kg) arsenic, the blasted rock is classified as "mineralized." If the assay does not exceed these thresholds, the material is classified as "non-mineralized."

The mineralized development rock is stored at the temporary development rock placement area near the portals until it can be trucked to the dry stack facility and encapsulated in the tailings.

Optimization of the mine plan and layouts resulted in modifications to development rock quantities, with the current forecast shown in **Table 5.1**.

**Table 5.1: Development Rock Quantities (tons)**

	2010	2011	2012	2013	2014	2015	2016	2017	Total
Mineralized Rock to Underground	5,000	5,000	5,000	5,000	5,000	5,000	5,000	2,500	37,500
Mineralized Rock to Surface	146,522	143,634	142,022	79,557	55,232	42,242	44,638	8,467	662,314
Non-mineralized Rock to Surface	321,985	315,847	312,423	179,683	127,992	100,389	105,482	23,305	1,487,106
Total Development Rock	473,507	464,481	459,445	264,240	188,224	147,631	155,120	34,272	2,186,920

Non-mineralized development rock is used as bulk fill on roads and pads, for construction of the toe berm of the drystack, and as riprap.

5.5 Backfill Distribution

The underground mining method requires that mined-out areas be backfilled with material to help provide ground support while the adjacent ore panel is mined. Mill tailings mixed with cement (paste backfill) provide part of the necessary support. **Figure 5.3** depicts the backfill cycle.

The paste is made in the paste backfill plant, located on the surface near the mill. At the backfill plant, on an average approximately six to eight percent cement is added to the mixture to give it strength after curing. From the plant, the paste is pumped via a steel pipeline to the mine. A typical designed paste unconfined compressive strength is 30 pounds per square inch (psi) after 2 weeks.

To prepare the stopes for fill, all services are removed, including the air and water pipelines and electrical cable. High density polyethylene pipe (HDPE) and breather lines are installed in the highest areas of the stope and extended to the back end of the stope, where filling begins. The HDPE pipe is left in the stope as part of the fill process.

Shotcrete paste barricades are constructed near the access area to contain the cemented paste fill in the stope. During pouring, the paste builds up and pushes out



towards the barricade, completely filling the mined void. As the stope fills, small explosive charges are blasted with detonating cord to break the pipe (at couplers) and retreat the active pipe outlet back to the barricade.

5.6 Mine Equipment

5.6.1 Mobile Equipment

All stopes with a vertical height greater than 10 ft are developed using two-boom electric hydraulic jumbo drills. Single-boom electric hydraulic jumbos are used in narrower stopes. Rockbolters are used for installing ground support. Two sizes of Loaders (LHD) units are currently used: 9 cubic yards (yd^3) and 4 yd^3 . The 9 yd^3 LHDs are used to muck ore from stopes with a vertical height greater than 15 ft to the remuck, ore bin and to load trucks. The 4 yd^3 LHDs are used in narrower stopes with a vertical height of 10 ft.

Fifty-ton diesel haulage trucks are used to haul ore to the grizzly and development rock to surface.

Bulk pumpable emulsion is the primary explosive used. Two service units with man baskets are used to load emulsion in drill holes. Packaged emulsion explosives are used in small stopes where the pump units cannot access or as a backup if a unit is down for repair.

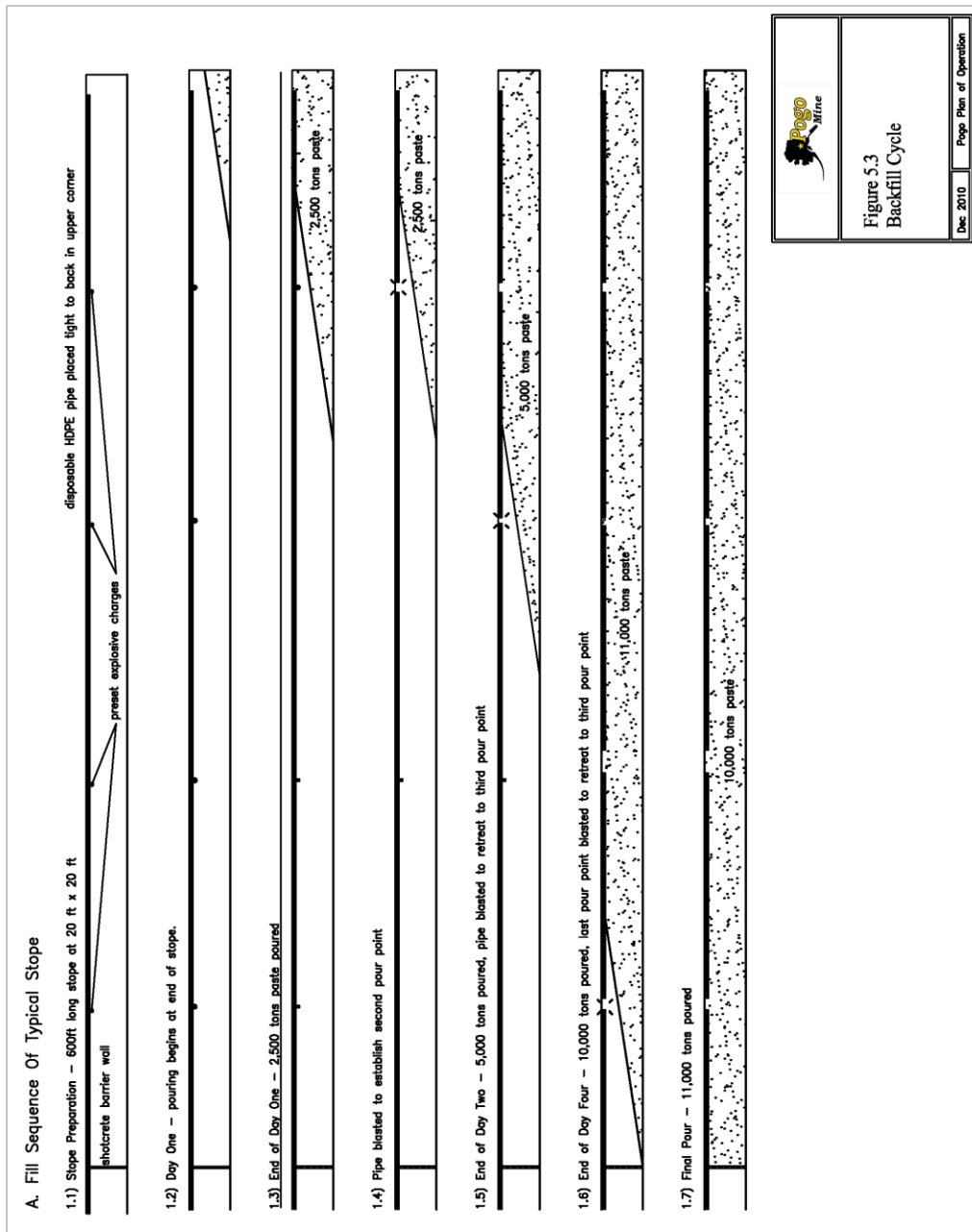
Two scissor deck units and two flat bed units are used for installing mine services and to transport supplies.

Mine supervisors and mechanics operate pick-up trucks for underground transportation. Miners are transported into the mine with tractors.

A grader is provided for road maintenance and a bulldozer for stope clean up.



Figure 5.3: Backfill Cycle





5.6.2 Fixed Equipment

Major pieces of underground fixed equipment used include the following:

- Main and auxiliary fans;
- Propane mine air heaters and storage tanks;
- Ventilation doors and regulators;
- Main and auxiliary pumps;
- Air compressors;
- Portable refuge stations;
- Grizzly;
- Hydraulic rock breaker;
- Conveyor belt feeder;
- Conveyor belt; and
- Equipment for furnishing the underground preventative maintenance facility, refuge stations, latrines, storage areas, and explosive and cap magazines.

5.7 Mine Facilities

5.7.1 Ventilation

Due to the ventilation requirements of the underground diesel equipment, equipment service bays, and other miscellaneous demands, the Pogo mine requires a total airflow of 500 kilo cubic feet per minute (kcfm).

Two fresh air intakes are used: the 1525 portal and the 1875 portal. Each portal is equipped with two propane burner's to heat the cold air in winter to prevent temperatures from dropping below freezing inside the mine.

Exhaust air exits the mine from the 1690 portal. To ensure proper airflow, two 350 horse power (hp) fans are installed in bulkheads along the 1690 conveyor / exhaust drift. Ventilation doors, auxiliary fans, ventilation tubing, and regulators are installed as the mine is developed to direct appropriate air quantities to the various work areas.



5.7.2 Conveyor

A 42-inch wide x 2,500-ft long conveyor, approximately 1,200 ft of which is located underground in the 1690 conveyor ramp, conveys ore to the mill. The surface portion of the conveyor transports the ore to a 1000 ton (live capacity) storage bin located adjacent to the mill.

The conveyor's drive head pulley is in an enclosure at the top of the 1,000 ton storage bin, while the conveyor's vertical gravity take-up is located in the mine. The conveyor is suspended from chains for its entire underground length to facilitate cleanup.

The conveyor is anchored at intervals along one side of the drift wall. Vehicle access is provided along the length of the conveyor drift. Above ground, the conveyor is elevated and housed in a prefabricated tubular gallery that also carries mine services.

A self-cleaning magnet is located near the ore bin apron feeder and is designed to remove any ferrous metal that may harm the conveyor or downstream process equipment. A second conveyor transfers ore from the storage bin to the mill.

5.7.3 Underground Equipment Maintenance

Mine equipment maintenance is performed both underground and at surface. A preventative underground service bay has been developed in the center of the mine for minor repairs. All major equipment repairs are performed in the surface shop.

5.7.4 Electrical Distribution System

Electrical power is delivered to the mine from the surface substation at 13.8 kV. The 13.8 kV power cable is fed into the mine through the 1525 and 1690 portals. Distribution centers are located throughout the mine to convert the power to 480 volt (V) for mine equipment and auxiliary ventilation.

.

5.7.5 Underground Communications

The mine is served by a leaky feeder system that enables communication via portable hand-held radios. Base radios have been installed in most of the mining equipment. Hand held radios are also available. Base radios are installed at each underground electrical transformer location.



A fixed telephone system is installed in the mine as a backup system, with telephones located at each refuge station and electrical transformer.

The mine is equipped with a stench gas emergency warning system, which can be initiated at the 1525 portal and the 1875 portal.

5.7.6 Compressed Air

Compressed air for drilling, pumps and the maintenance shops is supplied by an electric air compressor installed at the 1525 Portal. Compressed air is distributed to the primary development drives through 4-inch diameter pipes and to the stopes through 2-inch pipes. When the stoping lift is complete, compressed air lines installed in the stope access drifts and stoping areas are recovered and re-used for subsequent stope lifts.

5.7.7 Service Water

Mine service water is distributed throughout the mine in 4-inch pipelines suspended in the upper corner of the ramps. The pipelines are reduced to a 2-inch diameter in the stope accesses and stopes. When a stoping lift is completed, water lines installed in the stope accesses and stoping areas are recovered and reused in subsequent stope lifts.

A mine service water recycling system was installed near the 1230 mine sumps underground in January 2009. It filters the sump water to reuse as mine service water.

5.7.8 Refuge Stations

Mine Safety and Health Administration (MSHA) requires that refuge chambers be provided in areas from which mine personnel may not be able to escape during an emergency. Currently four portable refuge chambers are located in mining blocks. This will eventually increase to five as mining progresses. Refuge chambers are equipped as per MSHA and 30 Code of Federal Regulations (CFR). First aid equipment and other necessities are provided.

5.7.9 Emergency Egress

Personnel typically exit the mine through the 1875 portal. In an emergency, the 1525 portal and 1690 portal may also be used, and in some ventilation raises, manway ladders are installed.



5.7.10 Fueling

From surface storage at the mine shop, fuel is delivered to the mining equipment by a mobile fuel truck.

5.7.11 Diamond Drilling

Diamond drilling is used to define the orebody and assist in access development placement, reserve estimation and short and long-range planning.



6.0 MILLING

6.1 Milling Facilities

The mill facilities are located in the Liese Creek Valley, parallel to a portion of the site access road. The general layout of the plant site facilities, including the mill and backfill plant, is shown in **Figure 6.2** in **Appendix B**. **Figure 1.2** shows a photo of the site facilities. The mill facilities consist of two main buildings: one houses the grinding, gravity, flotation, cyanide leach and carbon in pulp (CIP) processes and the other building contains the tailings dewatering and paste backfill processes.

Gold is recovered from the mined ore using a milling method consisting of: 1. Grinding the ore to a fine particle size to liberate the gold contained in the ore; 2. Recovering a portion of the gold using gravity methods; 3. Floating the remaining gold and sulfide minerals using froth flotation; and 4. Recovering the gold from the flotation concentrate using cyanide leach (see **Figure 6.1** in **Appendix B** for Process Flow Diagram). The cyanide process is isolated from any contact with the environment. The cyanide slurry is detoxified, and the residual cyanide contacted material contained underground in the paste backfill.

Operation of the Pogo mill proved that the ore is amenable to gravity recovery and approximately one third of the gold may be recovered in this manner. The use of gravity recovery and flotation allows for the downsizing of cyanide leach, cyanide detoxification, and carbon recovery. Reducing the size of the cyanide leach circuit in turn reduces the amount of cyanide required for ore processing.

The gravity process recovers less than 1% by weight of the mill feed with up to 40% of the recovered gold. The gravity circuit concentrate is leached in an intensive cyanide leach circuit to extract the gold from the concentrate. After leaching the residue is then combined with the flotation concentrate material at the starting point of the conventional cyanide leach circuit.

The flotation process recovers the gold not collected in the gravity circuit into a sulfide rich concentrate representing about 10% by weight of the mill feed. This concentrate is leached in a conventional cyanide leach circuit to extract the gold from the concentrate.

All of the cyanide leach circuits are designed to prevent contact between slurry and the external environment. Following leaching, the cyanide slurry is detoxified and placed underground as paste backfill to fill the void created during mining.



The Pogo mill produces two types of tailings:

Tailings from the flotation circuit. Approximately 90% of the total tailings mass consist of finely ground sand and traces of sulfide mineralization. Half the tailings are filtered and trucked to the surface drystack tailings placement facility. Filtered tailings are reduced to 15% moisture or less prior to placement. The filtrate water is recycled back into the mill process. The rest of the tailings are combined with the detoxified cyanide leach tailings and placed in the mine (see **Figure 5.3**).

Tailings from the cyanide leach circuit. Tailings from the cyanide leach circuit comprise the remaining 10% of the total tailings mass. All are used to make paste backfill after going through the cyanide detoxification circuit, ensuring that most of the sulfide minerals contained in the ore are returned to their original location.

In summary, the Pogo process flow sheet accomplishes the following critical objectives:

- Minimizes the amount of sulfide and arsenic mineralization in the surface drystack tailings facility;
- Ensures that cyanide contacts the minimum amount of ore possible and that all material that has come into contact with cyanide is isolated underground as cemented paste backfill; and
- Ensures that all cyanide-bearing solutions are treated to detoxify cyanide to the lowest practical level.

The milling unit operations are described in **Sections 6.1.1 to 6.1.6** below.

6.1.1 Grinding

Ore is conveyed from the surface storage bin to a grinding circuit consisting of a Semi-Autogenous Grinding (SAG) mill and a ball mill. The ore is mixed with recycled water and ground by the tumbling action of steel balls to produce a target particle size of 80% less than 65 microns (μm), at a slurry density of 35% solids by weight.

6.1.2 Gravity Circuit

All of the ground slurry is directed to a trash screen and then to a centrifugal gravity concentrator that separates the particles according to differences in specific gravity and recovers any “free” gold. Approximately 15-40% of the gold is currently being recovered in this fashion.



Concentrates from the gravity circuit are leached in an Intensive Leach Reactor (ILR), and the residue is reground in a dedicated regrind mill to isolate the cyanide solutions. The reground residue is then pumped as slurry to the head of the conventional cyanide leach circuit. Gold bearing solution from the ILR is pumped to the gold electrowinning circuit located in the refinery.

6.1.3 Flotation & Concentrate Regrind

After grinding and gravity concentration, the slurry reports to the flotation circuit. In this circuit, finely ground minerals are recovered according to mineral type and surface chemistry to a froth phase; this is created by frother and collector reagents in agitated and aerated tanks. The flotation concentrate amounts to approximately 10% by weight of the initial ore fed to the mill. This flotation concentrate is reground to a powder like consistency (target 80% passing 15 μm) to liberate fine gold from the sulfide minerals.

6.1.4 Cyanide Leach & Carbon-in-Pulp (CIP)

Before entering the leach circuit, the reground concentrate is pre-aerated with oxygen. Cyanide is then introduced to dissolve the gold in the flotation concentrate material. The leached slurry is then directed to CIP tanks, where the dissolved gold is adsorbed onto activated carbon granules suspended in the pulp.

The leach and CIP circuits have two thickeners that permit cyanide solution from the CIP tailings to be recycled to the beginning of the leaching circuit. Pre-aeration and solution recycling minimizes the requirement for cyanide in the process.

6.1.5 Carbon Stripping, Electrowinning, Refining

The gold-loaded carbon from the CIP circuit is periodically stripped of its gold in a carbon elution pressure vessel. Loaded solution passes through electrowinning cells and the gold is collected as sludge in the bottom of the cells as well as plated onto stainless steel wool cathodes. The gold is then removed from the cathodes by pressure washing and melted to produce gold dore. The stripped carbon is reactivated by acid washing, followed by thermal regeneration in a horizontal kiln, and recycled back to the CIP circuit.



6.1.6 Cyanide Detoxification

Residual cyanide in the CIP tailings from the cyanide leach circuit undergoes detoxification by means of a Sulfur Dioxide / air cyanide detoxification process. The Sulfur Dioxide / air process uses a mixture of sodium metabisulfite solution and air sparged in agitated tanks to oxidize the cyanide. Lime is added to maintain a slurry pH of 8.0 to 9.5, and copper sulfate is added as a catalyst. Following this process, the CIP tailings are used to make paste backfill for the mine.

ADEC Waste Disposal Permit limits the Weak Acid Dissociable (WAD) Cyanide in the CIP tailings to be used for paste backfilling as follows: "At least 90% of the samples shall contain less 10 mg/kg of WAD cyanide and none of samples shall contain more than 20 mg/kg of WAD cyanide."



7.0 POGO MINE WASTE MANAGEMENT

The Pogo mine produces a variety of wastes the majority being tailings and mine rock with lesser amounts of general construction debris and other solid waste. About 40% of tailings will be placed underground as paste backfill. The remaining tailings are dewatered by pressure filtration and placed in a surface tailings facility or “drystack” in Liese Basin. So far, about 4.4 million tons of tailings and waste rocks have been placed to the drystack tailings facility, which has an estimated maximum height of 200 feet and contain approximately 7.4 million tons of capacity. The drystack facility has been designed to allow future expansion and is permitted to a capacity of 20 million tons in the Waste Disposal Permit.

7.1 Paste Backfill

As described in **Section 3.1**, the Pogo mine produces two tailings products: flotation tailings and cyanide leach tailings. CIP tailings represent approximately 10% of the total volume of milled waste material, contain most of the sulfides, and are the only waste material that had contact with cyanide.

After detoxification of the cyanide leach tailings, the cyanide leach tailings are mixed together with some of the flotation tailings and cement producing “paste backfill” and placed in the mined-out stope areas underground for ground support. Placement of all the cyanide leach tailings in the paste ensures safe and permanent disposal underground. In 2008, Pogo sampled the paste backfill mixtures and confirmed that the NP/AP (neutralization potential/acid potential) ratio of all samples was greater than the 1.4 target value proposed during project design (SRK 2008, Sobek Acid base Accounting).

In the event there are no stopes ready for backfill, cyanide leach tailings can be temporarily stored in a tank at the mill, allowing for milling operations to continue between paste pours. Once the temporary storage is full, the mill will shut down.

7.2 Surface Tailings Treatment Facility

The surface tailings treatment facility has two separate components, the drystack and the RTP. These components are described below.



7.2.1 Drystack Tailings Facility

The drystack has been in operation since February 2006. The drystack has two distinct zones: the “shell” area, which provides structural stability for the facility; and the “general placement area,” which is used for general tailings placement and mineralized rock placement and which is not required to contribute strength. The shell is comprised of non-mineralized development rock and compacted tailings. As of September 2010, about 4,395,000 tons of material has been placed at Drystack Tailings Facility, which includes 2,678,000 tons of drystack tailings, 606,000 tons of mineralized rock, and 1,111,000 tons of non-mineralized rock. The capacity of the current facility is estimated to be about 7.4 million tons, and it is expected that the current facility will fill by the end of 2013, based on the as-built survey conducted in September 2010 and the life of mine plan (see **Figures 7.1 a-h covering years 2010-2017**). The preliminary study to expand the capacity up to 20 million tons has been conducted, and the route of new diversion ditch determined. Following the detailed engineering study, the new diversion ditch needs to be constructed. The detailed design including the slope stability evaluation of the expanded drystack tailings facility will be submitted to the relevant agencies and the required permit amendments obtained prior to the construction of new diversion ditch. Currently Pogo is prohibited from placing tailings over the diversion ditches as is illustrated in **Figures 7.1d through 7.1h**. The Pogo DSTF Construction and Maintenance Plan is provided in **Appendix F**.

Shell Area

The first shell (rock fill shell) was constructed using non-mineralized rock only to a width of 100 feet. Non-mineralized rock is placed in three ft lifts on the design 3:1 (horizontal: vertical) slope to construct a shell for the tailings general placement. The second shell (composite shell 1), which has been constructed since 2009, is constructed using non-mineralized rock and drystack tailings. Non-mineralized rock is placed at the face slope in three feet lifts on the 3:1 slope to a width of 20 feet, then the drystack tailings is placed in one foot lifts and compacted. The width of the second shell is about 150 feet. The construction of the third shell (composite shell 2) will commence in 2011 using same method as the second shell.

Prior to the shell construction, the toe berm was extended downstream. Approximately one foot of organics and soil was cleared and grubbed from the drystack footprint area and stockpiled for future use as growth media. A 1.5 ft thick layer of non-mineralized rock was placed as an erosion control / drainage blanket over the entire drystack



footprint after grubbing is completed. A haul road along the north side of the drystack is used to access the stack. Various access points to the benches are created from the main haul road as the facility rises.

General Placement Area

Tailings and mineralized development rock is co-disposed year-round in the general placement area. The rock is encapsulated in the tailings to minimize the oxidation of any sulfide minerals present. Rock is not placed in the general placement area until there is a two foot minimum of compacted flotation tailings covering the area. The rock is placed in nine foot maximum lifts before another two feet of tailings cover is placed over the rock. The mineralized rock may not be placed within 50 feet from the perimeter of DSTF.

The same compaction procedures used in creating the structural shell are used in the general placement area, despite its lower requirement for structural strength. This effort aids trafficability and other operational considerations.

Snow and ice is taken into consideration during construction of the general placement area. Since the performance of the drystack does not depend on quality compaction in the general placement area, tailings and mineralized rock may be mixed with small amounts of snow and ice prior to placement; however, all reasonable attempts are made to minimize the amount that becomes buried in the stack.

Access to the general placement area is via a haul road between the plant site and drystack. As construction of the drystack continues, this haul road is progressively buried. No re-routing of this haul road is required.

Compaction Requirements

The tailings are placed and compacted in accordance with the Pogo DSTF Construction and Maintenance Plan (**Appendix F**).

Sedimentation Control

Drystack erosion translates into a sediment load in the RTP, thus specific sedimentation control measures are used to keep erosion to a minimum. These control measures have proven effective as very little tailings have reached the RTP. To achieve these results at Pogo, the following measures described below are taken.



Drystack Geometry. The use of two percent slopes to limit erosion on the tailings. The slope face of the shells is covered with non-mineralized rock to minimize the erosion of drystack tailings at the slope face.

Drystack Compaction. Both the shell area and general placement area are compacted, but the shell area is the most erosion resistant.

Equipment Operations. The drystack shells are developed as a combination of terraces to prevent equipment from causing erosion.

Managing Runoff. Silt fences are used for erosion control as necessary.

Dust Control

Tailings have the potential to create dust, especially when they have been frozen or desiccated by the sun. The drystack area in the Liese Basin is not overly exposed to sun, and wind velocities are lower than on adjacent ridges. Observations from snowpack distributions in the basin show that drifting in the lower basin is not a concern.

Best management practices are used to control dust during drystack operations such as; compacting the tailings, controlling traffic on the drystack, and limiting the use of equipment to active placement area(s) only. Summer moisture from rainfall assists in keeping the surface moisture content within an acceptable range although prolonged periods of warm weather with low humidity may require building silt fences around non-active placement areas. In winter, silt fences are required if the shell is exposed. During this time, natural or artificial snow coverings provide cover for the shell area.

Surface Water Management

Flow-through Drains

All runoff in and around the tailings drystack facility is directed to the RTP by means of a network of ditches and drains. Flow-through drains are constructed in the existing stream valleys within the drystack area to augment the existing drainage courses and allow them to pass runoff under the stack.

At present, flows in these channels are above the water table (by approximately 10 ft in most cases) due to accumulated organic detritus in the bottom of the channel. The drainage courses have been prepared appropriately to remove this blinding layer. With this blinding layer removed and the diversion ditch in place, it is unlikely there would ever be any appreciable water near surface in the existing drainage courses.



Nonetheless, for additional security following mine closure, the flow-through drains are designed to carry a significant capacity of water compared to previously measured flows in Liese Creek.

The rockfill used in the flow-through drains is between 12-inch and 36-inch in size, and covered with a filter material to prevent fines migrating in from the drystack tailings. The rockfill is placed at about 1H:1V, resulting in a drain base width of 21 ft, crest width of 9 ft and height of 6 ft. The corresponding flow capacity of such a drain is approximately equivalent to a 1:10,000-year/24-hour storm event with no allowance for freeboard and without the benefits of the diversion ditch.

Perimeter of Drystack Tailings Facility

The non-mineralized waste rock is placed at the perimeter of drystack tailings facility to allow any runoff from precipitation that bypasses the major diversion ditch above the site is lead to the flow-through drains. All flows or seepage from the drystack passes to the RTP and treated as necessary.

Monitoring

Bi-annual survey records of the drystack, truck loads, and tonnage data are recorded. Visual inspections are recorded. Annual as-built surveys are scheduled for September for the annual site as-built drawing.

Geotechnical monitoring is conducted at the shell area in order to confirm if the drystack is compacted as designed. This monitoring includes geotechnical testing such as Standard Proctor Test, particle size distribution and Atterberg Limits, and in-situ density and moisture content using Troxler nuclear gauge.

Contingency

Tailings handling and placement procedures are designed to accommodate equipment breakdowns and unforeseen weather events. Equipment is sized so that duty hours are low and/or backups are included. Underground mine equipment can also provide backup for loading and hauling.

Drystack Tailings Facility Construction and Maintenance Plan

The Drystack Tailings Facility Construction and Maintenance Plan will be updated and submitted to the agencies for review. It will become part of the Plan of Operation by reference and will be included as **Appendix F**. It will consider the current construction



design, appropriate QA/QC procedure based on the revised slope stability analysis, and the updated life of mine plan.

7.2.2 RTP Facility

The RTP is designed to collect seepage from the drystack so that it can be treated before discharge. The RTP also collects all runoff from the drystack tailings facility and provides adequate retention time for settling of solids as well as providing surge storage capacity so that the drystack tailings runoff can be treated before discharge.

The RTP dam has a maximum storage capacity of approximately 43.6 million gallons (Mgal) and was permitted for a crest elevation of 2092 ft amsl. The dam is a membrane lined rockfill embankment with a hydraulic height of 67 feet. The dam crest is 35 feet wide and extends over a distance of 550 feet. The sharp crested weir located in the spillway inlet is at elevation 2084 ft amsl. The spillway has a maximum discharge capacity of 440 cubic feet per second (cfs). The spillway intake structure is constructed from reinforced concrete and discharges into a channel lined with a corrugated steel pipe. This channel is approximately 600 feet long and subsequently discharges into a rip rap outfall located in a channel that would return flows to Liese Creek in the event of spillway operation. A grout curtain located beneath the upstream toe of the dam was installed to limit seepage through the foundation bedrock while the use of a composite liner on the upstream face of the dam was installed to limit seepage through the dam embankment. During normal dam operations, water is pumped from the reservoir via two HDPE pipes emptying into a head tank. The RTP is operated in accordance with the Pogo RTP Operating and Maintenance Manual (**Appendix G**).

Seepage collection wells (SCW) are installed 150 ft downstream of the toe to capture seepage and return it to the RTP pond. Five wells are currently functional, and consist of four deep wells (60 – 70 feet in depth) and one shallow well (13 feet in depth). Seepage collected by SCWs is returned to RTP Head Tank via HDPE pipeline. SCW 1-4 (never functional) were properly plugged and abandoned in 2011.

Three water monitoring wells (MW) are installed about 330 feet downstream of the seepage collection wells below the RTP dam.

For more information on the RTP facility or water management in general, see **Section 8**.



7.3 Other Wastes

Besides tailings and mine rock, other types of non-hazardous materials are generated at Pogo and require storage or disposal. As per Pogo's Waste Disposal Permit 0131-BA002, these non-hazardous materials may be placed in the drystack or underground.

- Settled solids from sumps, ditches, and degritting basins;
- Settle solids from the water treatment plant;
- Dewatered water treatment plant sludge, including the sludge generated during the advanced exploration phase; dewatered sewage sludge meeting the requirements of Section 1.2.2.6 of Pogo's Waste Disposal Permit 0131-BA002;
- Incinerator ash and residue;
- Ash from combustion of scrap wood material;
- Iron (drill steel, balls, empty case, etc);
- Used ventilation tubing and used filter press cloth;
- Empty plastic and glass containers; inert domestic waste;
- Construction debris;
- Tires;
- Spill cleanup debris approved by ADEC;
- Non-terne plated used oil filters that have been gravity hot-drained; and
- And such material as would otherwise be disposed of in a surface landfill without special handling.

An incinerator near the lower camp is used to incinerate all kitchen wastes, dewatered sewage sludge, and other cardboard, paper, and burnable wastes from the project.

A burn pit, near the gravel ponds in lower camp, is used to dispose of clean wood and cardboard composed mainly of large debris from shipping containers and packaging. A burn permit is obtained on a yearly basis from Alaska Department of Natural Resources (ADNR).

These materials may NOT be disposed into the surface landfill, the surface tailings drystack facility or the underground facility, unless otherwise provided or approved in writing by ADEC:



- Other than interstitial waters entrained in the tailings or past backfill tailings, treated or untreated process water in quantities or concentrations that would exceed water quality standards in 18 Alaska Administrative Code (AAC) 70;
- Chemical containers (unless triple rinsed) and discarded or unused chemicals;
- Un-combusted household waste;
- Laboratory wastes other than wash waters, neutralized acids and neutralized bases;
- Sewage solids that are untreated and/or have less than 10% solids by weight;
- Asbestos waste;
- Hazardous wastes, as defined by 40 CFR, Part 261, including radioactive material, explosives, strong acids and untreated pathogenic waste. This prohibition does not preclude disposal of residual wastes included as byproducts of the beneficiation process due to recycling of refinery slag, fire assay crucibles and cupels;
- Fuels, oil, transformers, paint, equipment and packing material;
- Glycol and solvents;
- Batteries; and
- CIP tailings except when subjected to cyanide destruction as required by section 1.2.3 of Pogo's Waste Disposal Permit 0131-BA002 and disposed underground as part of the paste backfill tailings.

These materials are taken off site for disposal.

- Screen material containing wood chips and carbon from the CIP and rougher concentrate screens (containing low levels of cyanide and gold) are shipped to a smelter;
- SAG mill liners may be recycled to the fabrication plant;
- Acid containers when feasible are shipped to the producer for re-use;
- Cyanide shipping containers comprised of wood are burned onsite with the burnable waste;



- All cyanide shipping containers comprised of bags are tripled rinsed and taken with the non-burnable trash off-site to a landfill;
- Used ball mill grease is delivered to an off-site incinerator;
- Wash bay sludge is delivered to an approved off site incinerator; and
- Used rags and absorbs containing petroleum are shipped off-site for incineration or they are incinerated on-site.

7.4 Waste Rock Storage

There are two temporary storage piles for waste rock storage. One is outside of the 1875 portal and the other outside of the 1525 portal. The underground trucks bring the waste rock to the surface. The surface haul trucks move the mineralized rock to the drystack general placement area. Non-mineralized rock is hauled to the various areas where it is used.



8.0 WATER MANAGEMENT

8.1 Overview

The purpose of the Pogo water management plan is to provide a framework for the collection and treatment of water to achieve the following objectives:

- Ensure the reliability of water supply for all process and potable needs;
- Protect the operations from flooding, erosion, interference from groundwater, precipitation and runoff; and
- Control and treat water that comes into contact with project facilities in an environmentally sound manner before discharge.

For additional background, see the Pogo “Water Management Plan” (February 2002 and June 2002).

In 2008, the Pogo Mine experienced 15 inches of summer precipitation, amounting to the seventh wettest year in the 50 year record for the Big Delta dataset. This amount of rain presented some challenges to operations due to increased groundwater inflows into the mine and significant surface runoff into the RTP. These challenges were met proactively by accepting the production curtailments necessary to store up to 12 million gallons of water in the mine until it could be treated and discharged. This short term approach reinforced the importance of the overall water management strategy to Pogo’s long-term success, and in late 2008 prompted an internal re-investigation of the assumptions and design criteria associated with the water management plan.

The major elements of this investigation included:

1. A review by AMEC of the precipitation events as compared to the model used during permitting, (see AMEC 2008, Pogo Precipitation Review);
2. A review by an external consultant to update the mine inflow forecast with or without the contingent options of grouting and diversion of the Liese Creek surface flows, (see Brown 2009, Pogo Mine Inflow Evaluation and Control Review);
3. A review of the mine water treatment and discharge system for potential flow capacity upgrades or optimizations (EM Associates 2009, Water Treatment Plant Upgrades – Phase II); and



4. An internal review of the mine services water supply.

In summary, although the precipitation was intense, it was within the envelope of the original 19 inches annual average model. The 2008 mine inflows of up to 180 gpm were within the forecast range, but future inflows are now expected to increase as the mine expands and deepens. These inflows continue to be mitigated as necessary by grouting as contemplated in the contingency plans during permitting. Upgrades to the underground recycle system included a new filter and pumping system installed underground. This system is recycling mine services (collected groundwater) water, which reduces the amount of RTP surface water introduced into the mine and thus the amount of water that must be treated and discharged.

The overall water management strategy and various water streams, inflows and outflows relevant to the Pogo Mine are summarized below.

8.2 Overall Water Collection, Treatment & Discharge Strategy

The major components of the overall water collection, treatment, and discharge strategy for the project are shown in **Figure 8.1** in **Appendix B**. Water treatment plant #1 (WTP #1) is located underground inside the 1525 portal. Water treatment plant #2 (WTP #2) is located outside of the 1525 portal.

WTP #1 discharges to the final tank at WTP #2 where the water can then be returned to the mill or discharge to the off-river treatment works (ORTW). In case of an emergency, treated water can be pumped from the WTP#2 to the RTP for storage. Pogo is capable of continuously monitoring the treated effluent for pH, turbidity, and conductivity. Plant performance is monitored using these parameters, allowing for the automatic shutoff of any discharge during process problems.

8.3 Process Water

The Pogo process plant is designed to maximize the recycling of water (see **Figure 8.2** in **Appendix B**). The only water released from the process is to the tailings as part of the cemented backfill or as residual moisture in the surface drystack. Additional water necessary to make paste slurry is either RTP water or non-cyanide contacted raw water in the mill.

The total process water requirement is 147 gpm at 2,500 tpd. Make up water from external sources is used to replace the water entrained in the tailings material. In order



of priority, mine drainage water, RTP water and fresh water is used to satisfy this requirement.

8.4 Mine Water

Mine water inflows are highly variable depending on the geology and hydrogeology of active stopes and ramps in the mine. Underground water management is an important component of the operation of the Pogo mine.

Based on 5 years of experience gained from existing underground mine workings and the detailed hydrogeological investigations completed to date, the expected inflows to the mine have been reasonably estimated (Brown 2009) and are summarized in **Table 8.1**.

Table 8.1: Expected Mine Inflows

Water Management Strategy	Average Inflow	
	2009	2015
Uncontrolled inflow	240 gpm	499 gpm
Grout Liese Fault	178 gpm	286 gpm
Grout Liese and Graphite Faults	138 gpm	170 gpm

Using a combination of mine planning to schedule work near the water bearing faults and grouting mine inflows are maintained within the original design envelope.

Pogo began grouting in 2009, and it significantly contributes to controlling the underground seepage. Curtain grouting is applied to grout the water bearing faults such as Liese Creek ahead of advancing drifts. When water inflow is found in the drift, 60 feet long grout holes are drilled using a jumbo at the perimeter of drift, and then fine ground cement mixed with water is pumped into the holes at high pressure using a grout pump through mechanical packers set at the collar of grout holes. A couple of check holes are drilled after 24-hr curing time. Secondary grouting may be conducted if water inflow still exists. After completing the grouting procedure, the drift is advanced by 40 feet and is grouted again. If the water inflow can't be controlled by grouting, this stope may be paste backfilled.



A Tracer Test conducted in 2010 doesn't show any evidence of a connection between Liese Creek surface water and underground mine.

A Mine Water Recycling System was introduced in 2010 in conjunction with the construction of new 1230 Mine Sumps. This system filters sump water using sand filters and reduces the amount of RTP water sent to underground by as much as 150 gpm. It also reduces the pump up requirements of underground water from mine sumps to the mine water treatment plants.

8.5 Surface Water & Runoff

All surface water and runoff from the plant site and tailing drystack area is collected in the RTP immediately downstream of the tailing drystack facility. As shown on **Figures 8.4 and 8.5** in **Appendix B**, a system of monitoring wells is installed downstream of the RTP to monitor the performance of the RTP seepage collection system.

To minimize the amount of precipitation and runoff that comes into contact with project facilities and then drains to the RTP, a diversion ditch was constructed along both sides of the Liese Creek basin uphill of the tailings drystack facility. This ditch is operated and maintained throughout the life of the mine and during decommissioning.

The storm water is controlled in accordance with the Storm Water Pollution Prevention Plan (SWPPP) and Best Management Practices (BMPs) Plan. The stormwater sump collects runoff from the haul roads, the plant site, and the campsite. The mill site and campsite pads are sloped toward the high-wall, with drainage directed to the stormwater sump. The mill site and campsite pads were constructed with impervious soil in order to reduce potential infiltration of stormwater and to help direct any spills to the sump. The stormwater pumping system has a large pump capable of handling a rate sufficient to accommodate a 5-year/6-hour storm. Both pumps are connected to emergency standby power. In addition, the site layout has been planned so that in the event of a storm surge that cannot be handled by the pumping system, excess water is directed over a weir and down the 1690 portal conveyor drift into the mine, where it can be stored as necessary.

Ice is removed from the ditches before spring breakup as necessary to ensure adequate ditch capacity is available for the freshet. Potentially contaminated ice or snow removed from the mill site pad or other areas is placed so that it drains to the RTP.



8.5.1 Drystack Runoff

The RTP is designed to capture runoff and seepage from the drystack. The design of the drystack, placement of materials, operation, and drainage control is described in **Section 7.2.1**.

Samples of the tailings taken since startup generally show that the arsenic and sulfur concentrations are within the range observed during the kinetic testing completed prior to construction. The pore water concentrations for both arsenic and sulfur are below those predicted in the Pogo 2002 Water Management Plan. On average, operational drystack tailings contain roughly twice as much arsenic as the bench and pilot plant tailings. The sulfur concentrations are approximately a third higher for the drystack tailings (SRK, 2009, Review of Arsenic Concentrations in Dry Stack Tailings).

8.5.2 Recycle Tailings Pond (RTP)

Water that accumulates in the RTP is used to fulfill all additional process makeup requirements that are not being met by mine water flow. In periods where precipitation inflows are inadequate, makeup fresh water is taken from the gravel ponds and pumped to WTP #2. RTP water is routed to the plant and the process water tank.

8.6 Excess Water Management, Treatment & Discharge

Optimized storage at the RTP is 12 million gallons. This water is primarily used at the mill as make up water. When storage is greater than 12 million gallons the water from the RTP is treated at Water Treatment Plant #2 (WTP #2) and discharged to the ORTW. Excess water from the underground mine that can't be recycled is treated at Water Treatment Plant #1 (WTP #1) and discharged to WTP #2 for use at the mill or it is discharged to the ORTW.

WTP #2 removes suspended solids, arsenic, and other metals then the effluent is mixed and aerated in the off-river treatment works (ORTW) before final discharge to the Goodpaster River. The water treatment process is described in **Sections 8.6.1** and **8.6.2**.

8.6.1 Chemical Treatment Process System (WTP#2)

The water treatment plant utilizes four processes to remove contaminants from the water before discharge. These processes are:



- High-density sludge (HDS) process to achieve enhanced co-precipitation of metals, including arsenic; and
- As necessary, lime softening and recarbonation to remove calcium and magnesium via precipitation and thereby reduce total dissolved solids (TDS).

A third process, sulfide precipitation is available as a contingent measure if additional treatment is necessary to achieve the expected metals concentrations. The proposed treatment system is not sensitive to variations in feed chemistry.

The final stage of the treatment system includes a multi-media pressure filter to polish the treated water for removal of residual suspended solids prior to release to the Off-River Treatment Works. Excess sludge generated by the process is dewatered using a filter press to produce a cake for disposal in the drystack or with tailings backfill.

8.6.2 Off-River Treatment Works (ORTW)

The ORTW provides the final polishing step in the water treatment process. Details of the system are shown in **Figures 8.6** and **8.7** in **Appendix B**. It consists of two ponds constructed from gravel pits that were excavated for project development. The primary pond is connected to the river by an open channel. Water is pumped from the primary to the secondary pond via a shore-based pump station and a buried steel pipe. The ponds are not lined allowing water to flow between the river and the ponds.

The pump inlet screen is sized at 0.25-inch, with inlet velocities of less than 0.5 feet per second (ft/s) to protect fish from moving into the chamber.

Effluent from the water treatment plant is discharged to the mixing chamber of the ORTW pump station, at a maximum rate of 600 gpm. Flow data collected concurrently from the WTP#2 effluent and a flow meter at the ORTW pump station is used to control the pump output and maintain a maximum 25:1 mix ratio. The United States Geologic Survey (USGS) gauging station located near the Goodpaster bridge monitors the river flows. If winter icing conditions affect the gauging station, manual means of flow measurement are available to guide plant operations. Water is not pumped from the primary pond when the river flow is below 20 cfs.

A mixing well and static inline mixers force the water to mix in the large steel pipe that conveys the water between the ponds. Additional mixing occurs in the secondary pond, assisted by the aeration treatment system. An overflow weir in the outlet works of the secondary pond maintains a stable pond elevation and prevents fish from entering the

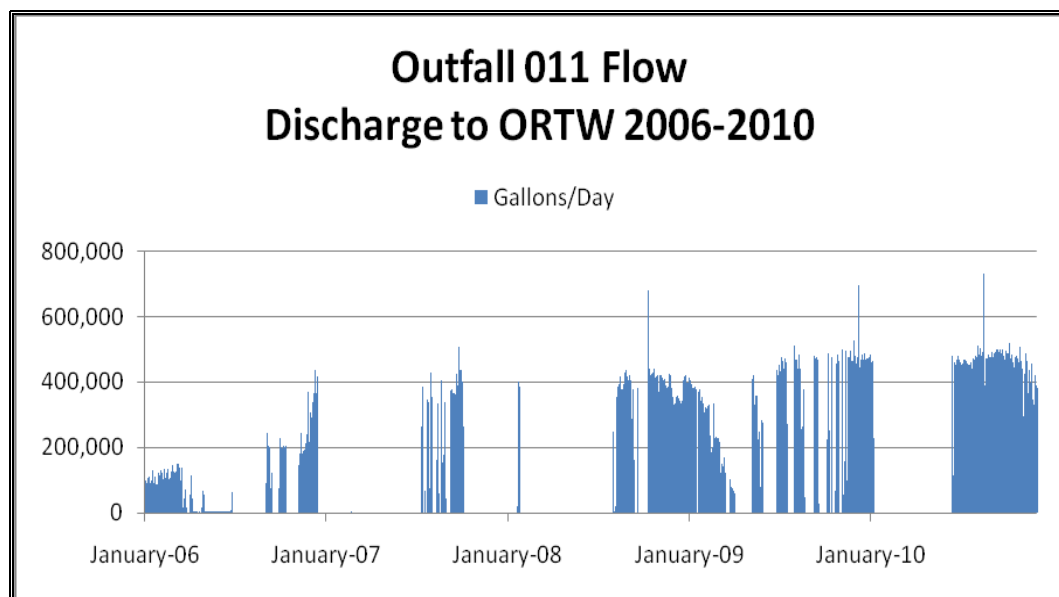


pond from the downstream direction. At a discharge rate of 400 gpm from the water treatment plant, the secondary pond has approximately 24 to 48 hours' residence time, which provides ample time to respond to potential upset conditions at WTP#2 by closing the shutoff valve in the outlet works of the secondary pond. The outlet of secondary pond near the weir provides a consistent and reliable monitoring location. The sampling facilities are located in a heated, weather-protected enclosure. The ORTW Effluent limitations are available in Pogo's APDES AK-005334-1 permit for Outfall 001.

8.6.3 Site Runoff & Discharge

During the years 2006 through 2010, site runoff and mine drainage was treated and discharged to the ORTW at an average rate of 44, 27, 91, 146, and 151 gpm respectively. The daily discharge is shown in **Chart 8.3** below:

Chart 8.3: Discharge to ORTW 2006-2010



Using the 19 inch annual average precipitation model used during project permitting, the forecast average discharge rate is 189 gpm as shown on **Figure 8.3**. It shows the site-wide water balance.



8.6.4 Water Treatment Plant #2 (WTP#2) Effluent Quality

WTP#2 effluent limitations are available in Pogo's NPDES Permit #AK-005334-1 for Outfall 011.

8.7 Fresh Water

Fresh water from the gravel pits near the 1525 portal is added to the RTP, MWTP #2, or the 1230 sump when other sources do not adequately meet process requirements.

8.8 Stormwater

Material site A below the mill was developed into a stormwater sedimentation pond for non-contact runoff. Overflow from the pond is filtered through the alluvial fill of the Road 6 embankment and diffused back into the groundwater in the Goodpaster Valley below the mouth of Liese Creek. An overflow weir controls the pond elevation to allow for storm surge modulation and sediment removal.

Well-defined practices known as "BMPs" (best management practices) are used for stormwater management to control runoff water quality. The primary parameter controlled is sediment. Oils and greases are controlled at their sources to ensure stormwater does not become contaminated with these materials.

In accordance with national standards, the stormwater BMPs adhere to the following design criteria:

- Design and construct drainage ditches as required;
- Provide spill planning, spill control materials and response teams to rapidly control oil, chemical or other spills that may affect Stormwater;
- Reclaim disturbed areas as soon as practicable after disturbance including regrading, topsoil establishment, revegetation with approved seed mixes and plantings, and maintenance of reclaimed areas to help establish the program;
- Maintain roads and travel areas to minimize erosion; and
- Grade roads and disturbed areas so that flows are directed to appropriate control facilities.

Refer to Pogo's SWPPP for more details.



9.0 REAGENT MANAGEMENT

9.1 Underground Storage

9.1.1 *Supplies*

Mining supplies are stored on the surface and in underground drifts. Supplies are regularly moved into the mine for mining activities. The major supplies are; roof bolts, welded wire, pipe, ventilation tubing, drill steel and bits.

9.1.2 *Explosives*

Explosives are hauled to site by truck and stored underground. Bulk emulsion is stored in two steel tanks underground. Locked storage magazines are provided for caps, detonating cord, primers and boosters.

9.2 Surface Storage

9.2.1 *Mill Reagents*

Reagents are purchased in normal commercial bulk containers or packaging, such as tote bins, barrels, palletized sacks, super sacks, etc. These packages are loaded into shipping containers at origin and shipped to site to provide security and protection against spills and loss throughout the transportation process. Upon delivery at site, reagents are stored in a covered building adjacent to the mill (see **Figure 6.2** in **Appendix B**) or stored in the shipping containers on site until they can be stored within the mill storage area. All covered storage areas have a concrete floor and are bermed or sloped to collect any spillage and aid in cleanup.

Reagents are mixed inside the mill building in appropriate tankage before being pumped to their addition points in the process. Any spills are contained within the concrete berms of the reagent area and collected in a sump for disposal or return to the process tanks.

Lime – Lime is used for controlling the slurry pH during leaching, water treatment, and cyanide detoxification. Lime is slaked in a ball mill slaker and added where required from a circulating pipe loop of hydrated lime slurry.



Sodium Cyanide – Sodium cyanide is used to dissolve gold. The cyanide is transported as dry briquettes in secure shipping containers and is stored in a reagent storage building that provides adequate secondary containment.

The contents of the cyanide mixing tank are mechanically agitated to enhance dissolution. After the cyanide has dissolved, the solution is transferred to the cyanide storage tank for distribution by centrifugal pumps to the leaching and stripping circuits.

Activated Carbon – Activated carbon is received in 1,000 pounds (lb) bulk bags and used to capture dissolved gold from the leached slurry. Carbon fines are collected and stored on site in tote bins. To recover residual gold values, these tote bins are periodically shipped to an off-site smelter for handling and disposal.

Sodium Hydroxide – This chemical is used to raise the pH in the carbon stripping circuit and neutralize after carbon acid washing. The sodium hydroxide is received as pellets packaged in steel drums containing 500 lb and is mixed with water in batches to form a 20% solution. The solution is prepared in a caustic solution tank between periods of usage thereby eliminating the need for a transfer pump and separate storage tank.

Nitric Acid – Nitric acid is used to acid wash the carbon (after stripping) to remove calcium scale buildup. The acid is delivered in returnable stainless steel drums containing approximately 100 lbs of concentrated acid solution per drum. Acid washing solution is prepared in a batch mixing tank at strength of 5% by volume. The solution is circulated through a carbon acid wash vessel using a recirculating pump system until the solution pH increases to 7.0. At this point, acid washing is complete and the spent acid solution is pumped to the mill process. The carbon is rinsed with process water prior to being advanced to the reactivation kiln feed tank. Acid solution is prepared in a single tank between periods of usage, thereby eliminating the need for a transfer pump and separate storage tank. Different storage methods of nitric acid, including bulk totes, are being considered to further improve the safety of handling the concentrated acid.

Sulfuric Acid – This is used for pH control in the cyanide detoxification circuit.

Potassium Amyl Xanthate – PAX is used as a flotation reagent to collect sulfide and gold-bearing minerals.

Polydadmac – Polydadmax is used as a fines depressant for controlling the flotation of silt-like particles, resulting in improved thickening and flotation performance.

Aero 6697 Promoter – This reagent is used as a flotation reagent to promote the recovery of gold-bearing minerals.



Aerfroth 549 – Aerofroth 549 MIBC is used as a frothing agent in the flotation circuit.

Flocculant – Flocculant assists with solids settling in the thickeners of the milling process. Dry flocculant is delivered to the site in 2,000 lb bags and stored in the mill reagent area, where it is mixed using a wet mixing system.

Sodium Metabisulfite – Sodium metabisulfite is delivered in 2,000 lb supersacks for use in the cyanide detoxification circuit. It is mixed and stored in tanks in the reagent mixing area.

Copper Sulfate – Copper sulfate is used as a catalyst in cyanide detoxification. It is received in 2,000 lb supersacks and dissolved in the copper sulfate tank as a 25% solution. The solution is metered from this tank to the SO₂/air cyanide destruction tanks.

Fluxes – Fluxes are used in the gold refining process. Anhydrous borax, sodium nitrate, soda ash, manganese dioxide, and graded silica sand are received in 50 to 100 lb bags or drums. These fluxing agents are used directly from their containers to refine gold concentrates into bullion. The containers are stored in the gold refinery.

Water Softening & Anti-scalant Agents – Water softening and anti-scalant agents are used in the mill to treat process water and prevent scaling in pipes. These chemicals are received as prepared concentrated solutions in drums and used as required via liquid metering pumps.

9.2.2 Grinding Media

Grinding balls are delivered in open containers and emptied into ball bunkers situated near the grinding mills. SAG mill grinding balls are loaded to a ball feeder situated over the mill feed conveyor.

9.2.3 Fuel & Propane

Fuel is trucked to site from various suppliers on an as needed basis. Fuel piping is above ground as much as practical, and all piping is either in lined containment or underground inside secondary piping. Buried piping on-site is from Above Ground Storage Tank (AST)-1 containment to the permanent camp facility (1 inch carbon steel line inside 3 inch HDPE) and to the maintenance shop (2 inch carbon steel line inside 8 inch HDPE). The other buried piping on-site is from AST-2 containment to the mill facility (1 inch carbon steel line inside 3 inch HDPE).



The site has three stationary fueling areas; helicopter, main containment area (MCA) and 1875 portal area. They have all been constructed of earthen berms with impermeable liners providing tertiary containment at least 110% of the volume of the largest tank.

A fuel truck is used to deliver fuel from the main storage tanks to remote equipment and smaller storage tanks on the site. Fuel is pumped for delivery with appropriate automatic shutoff devices.

Smaller tanks with secondary containment are located at the mill building and the camp. These tanks are filled by the fuel truck and are used for fueling heaters, backup generators and the incinerator. The total above ground diesel fuel storage capacity is 265,340 gallons.

Up to 60,000 gallons of propane storage is provided near both the 1525 Portal and the 1875 Portal. These tanks supply the mine air heaters and typically are full only in the winter months. The upper camp has 15,000 gallons of propane storage for the kitchen facilities. The new lower camp has one 1,000 gallon tank which is used to heat the mine dry. A total of 137,000 gallons of propane storage is provided on site.



10.0 MONITORING PLAN OUTLINE

10.1 Quality Assurance Project Plan or QAPP

The Quality Assurance Project Plan (QAPP) was developed using Environmental Protection Agency (EPA) guidance documents such as: EPA Requirements for Quality Assurance Project Plans, EPA QA/R-5 (EPA, 2001) and Guidance for Quality Assurance Project Plans, EPA QA/G-5 (EPA, 2002b). The primary purpose for the Plan is to assure the quality and integrity of all collected samples, the representativeness of the results, the precision and accuracy of the analyses, and the completeness of the data. The Plan describes the sample methods, sample designs, compliance goals, measurement objectives, and quality assurance and quality control measures utilized by the staff. The Plan was submitted to the EPA and the ADEC in support of Pogo's permits.

10.2 Pogo Mine Monitoring Plan

The principle objective of the Pogo Mine Monitoring Plan is to protect the water quality of the Goodpaster River. Through the use of a "Monitoring Plan," Pogo ensures this objective is achieved. The foundation of the plan is to monitor:

- Outfall of the off-river treatment system;
- Groundwater downstream of the RTP;
- Effluent of the domestic water treatment plant;
- Surface water in the Goodpaster River;
- Geotechnical stability of drystack tailings facility; and
- Geochemistry of the drystack tailings and mineralized waste rock.

The details of Pogo's Monitoring Plan were developed in consultation with State and Federal regulatory agencies. Monitoring results are reported to the appropriate agencies on a quarterly basis. The quarterly reports include data tables and graphs.



11.0 TEMPORARY SHUTDOWN

Planning for potential shutdowns is an integral part of good mine management. At some point, the operation may shut down for a short period (less than three months) during the life of the mine. Short-term shutdowns occur due to events such as major equipment breakdowns or weather related interruptions. Long-term, but still temporary (between three months and three years) shutdowns usually only occur in response to economic changes, such as a prolonged decline in the price of gold. These types of events are much less likely to occur, but Pogo has also been designed to accommodate such eventualities. Permanent shutdown occurs at the end of the mine life.

11.1 Short-term Shutdown Plan

During a short-term shutdown, the following activities are carried out:

- Continue to treat and discharge water;
- Continue all monitoring requirements;
- Continue maintenance of stormwater ditches;
- Shut down mill and filter plant and prepare to resume operations as soon as mining recommences; and
- Shape stockpiles to minimize erosion.

These and other maintenance activities keep the facility in good operating order for when the interruption is remedied and operations are ready to resume.

11.2 Long-term Shutdown Plan

In the event of a long-term shutdown, a minimum staff continues to maintain and preserve the facility until it can be restarted. The long-term shutdown plan for the Pogo project involves the following activities:

- Draw down the RTP to a minimum volume;
- Treat and eliminate all process solutions;
- Shut down the mill and filter plant, draw down all process tanks and vessels, and mothball major equipment to preserve their mechanical condition;



- Flush and clean all process lines and instrumentation, protect all electronics and sensitive equipment;
- Secure the mill, filtration plant and mine and continue to treat water as necessary;
- Continue to maintain stormwater system including diversion ditch;
- Implement possible mitigation measures such as grouting and paste backfilling of mining stopes to minimize mine water inflows; and
- Install erosion protection on all stockpiles, dumps, site areas, etc.

Long-term shutdown practices would allow the mine and plant to be restarted after a commissioning period, wherein equipment is reassembled and restarted, reagents reintroduced, electrical and control systems re-energized, and production activities resumed.

All monitoring and reporting requirements required under the various project permits will be met unless otherwise agreed to by the appropriate agencies.

12.0 RECLAMATION

Detailed reclamation plans are provided in Pogo's *Reclamation & Closure Plan* (2011). The financial bond amount is \$44.43 Mil for the project area and \$4.81 Mil for the access road and transmission line. Details are in the Reclamation Cost Model reviewed and approved by ADEC and ADNR.

Reclamation and closure are an integral part of the mining operations plan, providing guidance during the operational life of the mine to ensure that post-mining land use goals are achieved and that the waters of the state are protected. This plan describes a conceptual model for post-mining land use and provides the basis for reclamation and closure activities throughout the life of the project.

There are three critical reclamation and closure issues for the Pogo project:

- Successful stabilization and erosion control on steeply dipping slopes;
- Closure of the tailings drystack facility; and
- Closure of the underground workings.

Reclamation of the project site focuses on establishing post-mining land use in the area. This involves re-grading, surface amendment, re-establishing surface water drainage



and re-vegetating. Closure of the project site focuses on stabilizing all development rock, tailings and underground workings in order to control or mitigate any seepage and prevent degradation of surface or groundwater.

12.1 Reclamation and Closure Phases

The reclamation activities are separated into the following five phases:

- Phase I Reclamation of construction disturbance;
- Phase II Reclamation with concurrent mining;
- Phase III Final reclamation and closure of mine site;
- Phase IV Water treatment and post-closure reclamation; and
- Phase V Post-closure monitoring.

12.1.1 Phase I Reclamation of construction disturbance

The old airstrip on the sandbank of Goodpaster River was reclaimed.

12.1.2 Phase II Reclamation with concurrent mining

The old lower camp (former exploration camp) was demolished in 2010. The abandoned old surface exploration camp on the Pogo Ridge will be demolished and reclaimed. The mineralized rock stockpiled at the lower laydown area during the advanced exploration will be hauled to the Drystack Tailing Facility.

12.1.3 Phase III Final reclamation of mine site

Phase III will consist of the major closure activities required to decommission the mine, remove all facilities and structures not needed to support Phase IV activities from the property, and place the site in a stable condition. The facilities removed will include Mill facilities, Upper Camp, office, and shop. The mined-out stopes in underground will be paste filled and concrete plugs will be installed in all mine portals. An engineered soil cover will be installed on the surface of Drystack Tailings Facilities.

12.1.4 Phase IV Water treatment and post-closure reclamation

After completion of Phase III activities, the water of RTP will be treated and discharged until the water quality of RTP water will match the water quality standards. When



appropriate, RTP will be breached and the remaining facilities such as water treatment plant and off-river treatment works, site access road, and 3,000 ft airstrip will be demolished and all of disturbed area will be reclaimed. The private portion of Pogo access road and the entire portion of transmission line will also be reclaimed. It is anticipated that the Phase IV water treatment will last 10 years.

12.1.5 Phase V Post-closure monitoring

The water quality of surface water and ground water will be monitored at the designated locations in 1, 2, 5, 10, 15, 20, and 30 years after the completion of Phase IV post-closure reclamation.

12.2 Post-mining Land Use

The Tanana Basin Area Plan states that traditional land use in the area is wildlife habitat and recreation (TBAP, 1991). The goal of reclamation is to re-establish wildlife habitat within five to fifteen years by stimulating the growth of early successional vegetation. This vegetation provides willow and shrub browse for moose and other game; young aspen stands for Ruffed Grouse habitat; and grass areas that provide forage, diversity and cover for voles and food for raptors.



13.0 REFERENCES

- Teck-Pogo, February 2002, Water Management Plan;
- Teck-Pogo, 2003 Plan of Operations;
- Teck-Pogo, 2003 Solid Waste Monitoring Plan;
- Teck-Pogo, 2003 Reclamation and Closure Plan;
- SRK, Sobek Acid-Base Accounting Test Results, November 5, 2008;
- AMEC, Pogo Mine Dry Stack Geotechnical Considerations, August 20, 2008;
- AMEC, Pogo Precipitation Review, November 20, 2008;
- Adrian Brown, Pogo Mine Inflow Evaluation and Control Review, April 5, 2009;
- Engineering and Maintenance Associates, Water Treatment Plant Upgrades-Phase II, 2009;
- SRK, Review of Arsenic Concentrations in Dry Stack Tailings, January 10, 2009;
- Teck-Pogo, Pogo Stormwater Pollution Prevention Plan, June 2009; and
- Teck-Pogo, Pogo Quality Assurance Project Plan, March 2009.

Appendix A

POGO MINE CLAIM LIST



Seq	Quan	Bill No.	Claim Name		Date	Book/Page	ADL Serial No.
1	1	17488	Faith	#2	98/05/14	560/836	518091
2	1	17505	POGO	552	92/08/25	767/112-113	560607
3	1	17505	POGO	553	92/08/25	767/114	560608
4	1	17505	POGO	554	92/07/26	767/115	560609
5	1	17505	POGO	651	92/07/26	767/116	560610
6	1	17505	POGO	652	92/07/26	767/117	560611
7	1	17505	POGO	653	92/07/26	767/118	560612
8	1	17505	POGO	654	92/07/26	767/119	560613
9	1	17505	POGO	749	92/07/26	767/120	560614
10	1	17505	POGO	750	92/07/26	767/121	560615
11	1	17505	POGO	751	92/07/26	767/122	560616
12	1	17505	POGO	752	92/07/26	767/123	560617
13	1	17505	POGO	753	92/07/26	767/124	560618
14	1	17505	POGO	754	92/08/24	767/125	560619
15	1	17505	POGO	755	92/08/25	767/126	560620
16	1	17505	POGO	855	92/08/25	767/133	560627
17	1	17505	POGO	955	92/08/25	767/138	560632
18	1	17505	POGO	1055	92/08/25	767/144	560638
19	1	17505	POGO	1155	92/08/25	767/149	560643
20	1	17505	POGO	1353	94/04/16	863/411	561509
21	1	17505	POGO	1354	94/04/16	863/412	561510
22	1	17505	POGO	257	94/09/01	879/348-349	562399
23	1	17505	POGO	258	94/09/01	879/350	562400
24	1	17505	POGO	259	94/09/03	879/351	562401
25	1	17505	POGO	357	94/08/31	879/352	562402
26	1	17505	POGO	358	94/08/31	879/353	562403
27	1	17505	POGO	359	94/09/03	879/354	562404
28	1	17505	POGO	455	94/09/02	879/355	562405
29	1	17505	POGO	456	94/08/31	879/356	562406
30	1	17505	POGO	457	94/08/31	879/357	562407
31	1	17505	POGO	458	94/08/31	879/358	562408
32	1	17505	POGO	459	94/09/03	879/359	562409
33	1	17505	POGO	555	94/09/02	879/360	562410
34	1	17505	POGO	556	94/08/31	879/361	562411
35	1	17505	POGO	557	94/08/31	879/362	562412
36	1	17505	POGO	558	94/08/31	879/363	562413
37	1	17505	POGO	559	94/09/03	879/364	562414
38	1	17505	POGO	655	94/08/31	879/365	562415
39	1	17505	POGO	656	94/08/31	879/366	562416
40	1	17505	POGO	657	94/08/31	879/367	562417
41	1	17505	POGO	658	94/08/30	879/368	562418
42	1	17505	POGO	659	94/09/03	879/369	562419
43	1	17505	POGO	747	94/09/05	879/370	562420
44	1	17505	POGO	748	94/09/05	879/371	562421
45	1	17505	POGO	756	94/08/31	879/372	562422
46	1	17505	POGO	757	94/08/31	879/373	562423
47	1	17505	POGO	758	94/08/30	879/374	562424
48	1	17505	POGO	759	94/09/02	879/375	562425
49	1	17505	POGO	847	94/09/05	879/376	562426
50	1	17505	POGO	856	94/08/30	879/378	562428
51	1	17505	POGO	857	94/08/30	879/379	562429
52	1	17505	POGO	858	94/08/30	879/380	562430
53	1	17505	POGO	859	94/09/02	879/381	562431
54	1	17505	POGO	956	94/08/30	879/382	562432



Seq	Quan	Bill No.	Claim Name		Date	Book/Page	ADL Serial No.
55	1	17505	POGO	957	94/08/30	879/383	562433
56	1	17505	POGO	958	94/08/30	879/384	562434
57	1	17505	POGO	959	94/09/02	879/385	562435
58	1	17505	POGO	1047	94/09/05	879/386	562436
59	1	17505	POGO	1056	94/08/30	879/387	562437
60	1	17505	POGO	1057	94/08/30	879/388	562438
61	1	17505	POGO	1058	94/08/30	879/389	562439
62	1	17505	POGO	1059	94/09/02	879/390	562440
63	1	17505	POGO	1147	94/09/05	879/391	562441
64	1	17505	POGO	1156	94/08/28	879/192	562442
65	1	17505	POGO	1157	94/08/28	879/393	562443
66	1	17505	POGO	1158	94/08/28	879/394	562444
67	1	17505	POGO	1159	94/09/02	879/395	562445
68	1	17505	POGO	1255	94/09/04	879/397	562447
69	1	17505	POGO	1355	94/09/04	879/399	562449
70	1	17505	POGO	1448	94/09/06	879/400	562450
71	1	17505	POGO	1453	94/09/04	879/405	562455
72	1	17505	POGO	1454	94/09/04	879/406	562456
73	1	17505	POGO	1455	94/09/05	879/407	562457
74	1	17505	POGO	1548	94/09/06	879/408	562458
75	1	17505	POGO	1549	94/09/05	879/409	562459
76	1	17505	POGO	1553	94/09/04	879/413	562463
77	1	17505	POGO	1554	94/09/04	879/414	562464
78	1	17505	POGO	1555	94/09/05	879/415	562465
79	1	17505	POGO	1651	94/09/05	879/416	562466
80	1	17505	POGO	1652	94/09/04	879/417	562467
81	1	17505	POGO	1653	94/09/04	879/418	562468
82	1	17505	POGO	1654	94/09/04	879/419	562469
83	1	17505	POGO	1751	94/09/05	879/420	562470
84	1	17505	POGO	1752	94/09/05	879/421	562471
85	1	17505	POGO	1753	94/09/04	879/422	562472
86	1	17505	POGO	1754	94/09/04	879/423	562473
87	1	17505	POGO	1853	94/09/04	879/424	562474
88	1	17505	POGO	1854	94/09/04	879/425	562475
89	1	17505	POGO	744	95/08/16	927/995-996	563614
90	1	17505	POGO	745	95/08/19	927/997	563615
91	1	17505	POGO	746	95/08/19	927/998	563616
92	1	17505	POGO	844	95/08/16	927/999	563617
93	1	17505	POGO	845	95/08/16	928/001	563618
94	1	17505	POGO	846	95/08/16	928/002	563619
95	1	17505	POGO	944	95/08/20	928/003	563620
96	1	17505	POGO	945	95/08/16	928/004	563621
97	1	17505	POGO	946	95/09/28	928/005	563622
98	1	17505	POGO	1044	95/08/20	928/006	563623
99	1	17505	POGO	1045	95/08/20	928/007	563624
100	1	17505	POGO	1046	95/09/28	928/008	563625
101	1	17505	POGO	1144	95/08/20	928/009	563626
102	1	17505	POGO	1145	95/08/16	928/010	563627
103	1	17505	POGO	1146	95/08/20	928/011	563628
104	1	17505	POGO	1244	95/08/20	928/012	563629
105	1	17505	POGO	1245	95/08/20	928/013	563630
106	1	17505	POGO	1246	95/08/20	928/014	563631
107	1	17505	POGO	1343	95/08/21	928/015	563632
108	1	17505	POGO	1344	95/08/20	928/016	563633
109	1	17505	POGO	1345	95/08/21	928/017	563634
110	1	17505	POGO	1346	95/08/20	928/018	563635

Sumitomo Metal Mining Pogo LLC



Pogo Plan of Operations – Appendix A

Seq	Quan	Bill No.	Claim Name		Date	Book/Page	ADL Serial No.
111	1	17505	POGO	1443	95/08/21	928/019	563636
112	1	17505	POGO	1444	95/08/21	928/020	563637
113	1	17505	POGO	1445	95/08/21	928-021	563638
114	1	17505	POGO	1446	95/08/21	928/022	563639
115	1	17505	POGO	1447	95/08/22	928/023	563640
116	1	17505	POGO	1543	95/08/22	928/024	563641
117	1	17505	POGO	1544	95/08/21	928/025	563642
118	1	17505	POGO	1545	95/08/21	928/026	563643
119	1	17505	POGO	1546	95/08/21	928/027	563644
120	1	17505	POGO	1547	95/08/22	928/028	563645
121	1	17505	POGO	248	95/12/29	943/598-599	563855
122	1	17505	POGO	249	95/12/28	943/600	563856
123	1	17505	POGO	253	95/12/30	943/602	563857
124	1	17505	POGO	251	95/12/29	943/601	563858
125	1	17505	POGO	254	95/12/29	943/603	563859
126	1	17505	POGO	255	95/12/29	943/604	563860
127	1	17505	POGO	256	95/12/29	943/605	563861
128	1	17505	POGO	348	95/12/28	943/606	563862
129	1	17505	POGO	349	95/12/28	943/607	563863
130	1	17505	POGO	351	95/12/29	943/608	563864
131	1	17505	POGO	352	95/12/29	943/609	563865
132	1	17505	POGO	353	95/12/29	943/610	563866
133	1	17505	POGO	354	95/12/29	943/611	563867
134	1	17505	POGO	355	95/12/29	943/612	563868
135	1	17505	POGO	356	95/12/29	943/613	563869
136	1	17505	POGO	448	95/12/28	943/614	563870
137	1	17505	POGO	449	95/12/28	943/615	563871
138	1	17505	POGO	453	95/12/30	943/616	563872
139	1	17505	POGO	454	95/12/30	943/617	563873
140	1	17505	POGO	548	95/12/28	943/618	563874
141	1	17505	POGO	549	95/12/28	943/619	563875
142	1	17505	POGO	550	95/12/27	943/620	563876
143	1	17505	POGO	648	95/12/28	943/621	563877
144	1	17505	POGO	649	95/12/27	943/622	563878
145	1	17505	POGO	650	95/12/27	943/623	563879
146	1	17505	POGO	45	96/08/31	976/648-649	565313
147	1	17505	POGO	46	96/08/31	976/650	565314
148	1	17505	POGO	145	96/08/31	976/651	565315
149	1	17505	POGO	146	96/08/31	976/652	565316
150	1	17505	POGO	245	96/08/31	976/653	565317
151	1	17505	POGO	246	96/08/13	976/654	565318
152	1	17505	POGO	345	96/08/31	976/655	565319
153	1	17505	POGO	346	96/08/13	976/656	565320
154	1	17505	POGO	347	96/08/31	976/657	565321
155	1	17505	POGO	445	96/08/13	976/658	565322
156	1	17505	POGO	446	96/08/13	976/659	565323
157	1	17505	POGO	447	96/08/31	976/660	565324
158	1	17505	POGO	545	96/08/13	976/661	565325
159	1	17505	POGO	546	96/08/13	976/662	565326
160	1	17505	POGO	547	96/08/31	976/663	565327
161	1	17505	POGO	645	96/08/13	976/664	565328
162	1	17505	POGO	646	96/08/13	976/665	565329
163	1	17505	POGO	647	96/08/31	976/666	565330
164	1	17505	POGO	4448	96/08/23	976/667-668	565331
165	1	17505	POGO	4449	96/08/23	976/669	565332
166	1	17505	POGO	4450	96/08/23	976/670	565333



Seq	Quan	Bill No.	Claim Name		Date	Book/Page	ADL Serial No.
167	1	17505	POGO	4451	96/08/23	976/671	565334
168	1	17505	POGO	4452	96/08/23	976/672	565335
169	1	17505	POGO	4453	96/08/23	976/673	565336
170	1	17505	POGO	4454	96/08/23	976/674	565337
171	1	17505	POGO	4455	96/08/23	976/675	565338
172	1	17505	POGO	4456	96/08/23	976/676	565339
173	1	17505	POGO	4548	96/08/23	976/677	565340
174	1	17505	POGO	4549	96/08/23	976/678	565341
175	1	17505	POGO	4550	96/08/23	976/679	565342
176	1	17505	POGO	4551	96/08/23	976/680	565343
177	1	17505	POGO	4552	96/08/23	976/681	565344
178	1	17505	POGO	4553	96/08/23	976/682	565345
179	1	17505	POGO	4554	96/08/23	976/683	565346
180	1	17505	POGO	4555	96/08/23	976/684	565347
181	1	17505	POGO	4556	96/08/23	976/685	565348
182	1	17505	POGO	4648	96/08/31	976/686	565349
183	1	17505	POGO	4649	96/08/31	976/687	565350
184	1	17505	POGO	4650	96/08/31	976/688	565351
185	1	17505	POGO	4651	96/08/23	976/689	565352
186	1	17505	POGO	4652	96/08/23	976/690	565353
187	1	17505	POGO	4653	96/08/23	976/691	565354
188	1	17505	POGO	4654	96/08/23	976/692	565355
189	1	17505	POGO	4655	96/08/23	976/693	565356
190	1	17505	POGO	4656	96/08/23	976/694	565357
191	1	17505	POGO	60	96/08/20	976/713-714	565374
192	1	17505	POGO	61	96/08/20	976/715	565375
193	1	17505	POGO	62	96/08/19	976/716	565376
194	1	17505	POGO	63	96/08/19	976/717	565377
195	1	17505	POGO	64	96/08/16	976/718	565378
196	1	17505	POGO	65	96/08/15	976/719	565379
197	1	17505	POGO	66	96/08/15	976/720	565380
198	1	17505	POGO	67	96/08/01	976/721	565381
199	1	17505	POGO	160	96/08/20	976/722	565382
200	1	17505	POGO	161	96/08/20	976/723	565383
201	1	17505	POGO	162	96/08/20	976/724	565384
202	1	17505	POGO	163	96/08/19	976/725	565385
203	1	17505	POGO	164	96/08/16	976/726	565386
204	1	17505	POGO	165	96/08/15	976/727	565387
205	1	17505	POGO	166	96/08/15	976/728	565388
206	1	17505	POGO	167	96/08/01	976/729	565389
207	1	17505	POGO	260	96/08/21	976/730	565390
208	1	17505	POGO	261	96/08/21	976/731	565391
209	1	17505	POGO	262	96/08/20	976/732	565392
210	1	17505	POGO	263	96/08/29	976/733	565393
211	1	17505	POGO	264	96/08/16	976/734	565394
212	1	17505	POGO	265	96/08/15	976/735	565395
213	1	17505	POGO	266	96/08/15	976/736	565396
214	1	17505	POGO	267	96/08/01	976/737	565397
215	1	17505	POGO	360	96/08/21	976/738	565398
216	1	17505	POGO	361	96/08/21	976/739	565399
217	1	17505	POGO	362	96/08/19	976/740	565400
218	1	17505	POGO	363	96/08/19	976/741	565401
219	1	17505	POGO	364	96/08/16	976/742	565402
220	1	17505	POGO	365	96/08/16	976/743	565403
221	1	17505	POGO	366	96/08/15	976/744	565404
222	1	17505	POGO	367	96/08/01	976/745	565405



Seq	Quan	Bill No.	Claim Name		Date	Book/Page	ADL Serial No.
223	1	17505	POGO	460	96/08/14	976/746	565406
224	1	17505	POGO	461	96/08/14	976/747	565407
225	1	17505	POGO	462	96/08/14	976/748	565408
226	1	17505	POGO	463	96/08/14	976/749	565409
227	1	17505	POGO	464	96/08/14	976/750	565410
228	1	17505	POGO	465	96/08/14	976/751	565411
229	1	17505	POGO	466	96/08/14	976/752	565412
230	1	17505	POGO	467	96/08/01	976/753	565413
231	1	17505	POGO	560	96/08/14	976/754	565414
232	1	17505	POGO	561	96/08/14	976/755	565415
233	1	17505	POGO	562	96/08/14	976/756	565416
234	1	17505	POGO	563	96/08/14	976/757	565417
235	1	17505	POGO	564	96/08/14	976/758	565418
236	1	17505	POGO	565	96/08/14	976/759	565419
237	1	17505	POGO	566	96/08/14	976/760	565420
238	1	17505	POGO	567	96/08/14	976/761	565421
239	1	17505	POGO	568	96/08/14	976/762	565422
240	1	17505	POGO	660	96/08/12	976/763	565423
241	1	17505	POGO	661	96/08/12	976/764	565424
242	1	17505	POGO	662	96/08/12	976/765	565425
243	1	17505	POGO	663	96/08/14	976/766	565426
244	1	17505	POGO	664	96/08/14	976/767	565427
245	1	17505	POGO	665	96/08/14	976/768	565428
246	1	17505	POGO	666	96/08/15	976/769	565429
247	1	17505	POGO	667	96/08/15	976/770	565430
248	1	17505	POGO	668	96/08/15	976/771	565431
249	1	17505	POGO	760	96/08/11	976/772	565432
250	1	17505	POGO	761	96/08/14	976/773	565433
251	1	17505	POGO	762	96/08/07	976/774	565434
252	1	17505	POGO	860	96/08/10	976/775	565435
253	1	17505	POGO	861	96/08/13	976/776	565436
254	1	17505	POGO	862	96/08/07	976/777	565437
255	1	17505	POGO	960	96/08/10	976/778	565438
256	1	17505	POGO	961	96/08/13	976/779	565439
257	1	17505	POGO	962	96/08/07	976/780	565440
258	1	17505	POGO	1060	96/08/10	976/781	565441
259	1	17505	POGO	1061	96/08/07	976/782	565442
260	1	17505	POGO	1062	96/08/07	976/783	565443
261	1	17505	POGO	1160	96/08/03	976/784	565444
262	1	17505	POGO	1161	96/08/07	976/785	565445
263	1	17505	POGO	1162	96/08/07	976/786	565446
264	1	17505	POGO	1646	96/08/21	978/967-968	565932
265	1	17505	POGO	1647	96/08/21	978/969	565933
266	1	17505	POGO	1648	96/08/21	978/970	565934
267	1	17505	POGO	1649	96/08/21	978/971	565935
268	1	17505	POGO	1650	96/08/21	978/972	565936
269	1	17505	POGO	1746	96/08/21	978/973	565937
270	1	17505	POGO	1747	96/08/21	978/974	565938
271	1	17505	POGO	1748	96/08/21	978/975	565939
272	1	17505	POGO	1749	96/08/21	978/976	565940
273	1	17505	POGO	1750	96/08/21	978/977	565941
274	1	17505	POGO	3357	96/10/19	986/957-959	568819
275	1	17505	POGO	3358	96/10/19	986/960	568820
276	1	17505	POGO	3359	96/10/18	986/961	568821
277	1	17505	POGO	3360	96/10/17	986/962	568822
278	1	17505	POGO	3361	96/10/17	986/963	568823

Sumitomo Metal Mining Pogo LLC



Pogo Plan of Operations – Appendix A

Seq	Quan	Bill No.	Claim Name		Date	Book/Page	ADL Serial No.
279	1	17505	POGO	3362	96/10/18	986/964	568824
280	1	17505	POGO	3363	96/10/17	986/965	568825
281	1	17505	POGO	3457	96/10/19	986/966	568826
282	1	17505	POGO	3458	96/10/19	986/967	568827
283	1	17505	POGO	3459	96/10/18	986/968	568828
284	1	17505	POGO	3460	96/10/18	986/969	568829
285	1	17505	POGO	3461	96/10/17	986/970	568830
286	1	17505	POGO	3462	96/10/17	986/971	568831
287	1	17505	POGO	3463	96/10/17	986/972	568832
288	1	17505	POGO	3557	96/10/20	986/973	568833
289	1	17505	POGO	3558	96/10/19	986/974	568834
290	1	17505	POGO	3559	96/10/18	986/975	568835
291	1	17505	POGO	3560	96/10/16	986/976	568836
292	1	17505	POGO	3561	96/10/17	986/977	568837
293	1	17505	POGO	3562	96/10/17	986/978	568838
294	1	17505	POGO	3563	96/10/17	986/979	568839
295	1	17505	POGO	3653	96/10/22	986/980	568840
296	1	17505	POGO	3654	96/10/22	986/981	568841
297	1	17505	POGO	3655	96/10/21	986/982	568842
298	1	17505	POGO	3656	96/10/21	986/983	568843
299	1	17505	POGO	3657	96/10/20	986/984	568844
300	1	17505	POGO	3658	96/10/20	986/985	568845
301	1	17505	POGO	3659	96/10/18	986/986	568846
302	1	17505	POGO	3660	96/10/16	986/987	568847
303	1	17505	POGO	3661	96/10/16	986/988	568848
304	1	17505	POGO	3662	96/10/17	986/989	568849
305	1	17505	POGO	3663	96/10/17	986/990	568850
306	1	17505	POGO	3753	96/10/22	986/991	568851
307	1	17505	POGO	3754	96/10/22	986/992	568852
308	1	17505	POGO	3755	96/10/21	986/993	568853
309	1	17505	POGO	3756	96/10/21	986/994	568854
310	1	17505	POGO	3757	96/10/20	986/995	568855
311	1	17505	POGO	3758	96/10/20	986/996	568856
312	1	17505	POGO	3759	96/10/18	986/997	568857
313	1	17505	POGO	3760	96/10/16	986/998	568858
314	1	17505	POGO	3761	96/10/16	986/999	568859
315	1	17505	POGO	3762	96/10/17	987/001	568860
316	1	17505	POGO	3763	96/10/17	987/002	568861
317	1	17505	POGO	3853	96/10/22	987/003	568862
318	1	17505	POGO	3854	96/10/22	987/004	568863
319	1	17505	POGO	3855	96/10/21	987/005	568864
320	1	17505	POGO	3856	96/10/21	987/006	568865
321	1	17505	POGO	3857	96/10/21	987/007	568866
322	1	17505	POGO	3858	96/10/20	987/008	568867
323	1	17505	POGO	3859	96/10/18	987/009	568868
324	1	17505	POGO	3860	96/10/16	987/010	568869
325	1	17505	POGO	3861	96/10/16	987/011	568870
326	1	17505	POGO	3862	96/10/17	987/012	568871
327	1	17505	POGO	3863	96/10/15	987/013	568872
328	1	17505	POGO	3864	96/10/16	987/014	568873
329	1	17505	POGO	3865	96/10/19	987/015	568874
330	1	17505	POGO	3866	96/10/19	987/016	568875
331	1	17505	POGO	3867	96/10/19	987/017	568876
332	1	17505	POGO	3868	96/10/19	987/018	568877
333	1	17505	POGO	3869	96/10/20	987/019	568878
334	1	17505	POGO	3870	96/10/20	987/020	568879



Seq	Quan	Bill No.	Claim Name		Date	Book/Page	ADL Serial No.
335	1	17505	POGO	3871	96/10/20	987/021	568880
336	1	17505	POGO	3872	96/10/23	987/022	568881
337	1	17505	POGO	3953	96/10/22	987/023	568882
338	1	17505	POGO	3954	96/10/22	987/024	568883
339	1	17505	POGO	3955	96/10/21	987/025	568884
340	1	17505	POGO	3956	96/10/21	987/026	568885
341	1	17505	POGO	3957	96/10/21	987/027	568886
342	1	17505	POGO	3958	96/10/21	987/028	568887
343	1	17505	POGO	3959	96/10/19	987/029	568888
344	1	17505	POGO	3960	96/10/16	987/030	568889
345	1	17505	POGO	3961	96/10/16	987/031	568890
346	1	17505	POGO	3962	96/10/16	987/032	568891
347	1	17505	POGO	3963	96/10/15	987/033	568892
348	1	17505	POGO	3964	96/10/16	987/034	568893
349	1	17505	POGO	3965	96/10/19	987/035	568894
350	1	17505	POGO	3966	96/10/19	987/036	568895
351	1	17505	POGO	3967	96/10/19	987/037	568896
352	1	17505	POGO	3968	96/10/20	987/038	568897
353	1	17505	POGO	3969	96/10/20	987/039	568898
354	1	17505	POGO	3970	96/10/20	987/040	568899
355	1	17505	POGO	3971	96/10/21	987/041	568900
356	1	17505	POGO	3972	96/10/21	987/042	568901
357	1	17505	POGO	4053	96/10/14	987/043	568902
358	1	17505	POGO	4054	96/10/22	987/044	568903
359	1	17505	POGO	4055	96/10/22	987/045	568904
360	1	17505	POGO	4056	96/10/20	987/046	568905
361	1	17505	POGO	4057	96/10/21	987/047	568906
362	1	17505	POGO	4058	96/10/22	987/048	568907
363	1	17505	POGO	4059	96/10/19	987/049	568908
364	1	17505	POGO	4060	96/10/16	987/050	568909
365	1	17505	POGO	4061	96/10/16	987/051	568910
366	1	17505	POGO	4062	96/10/16	987/052	568911
367	1	17505	POGO	4063	96/10/15	987/053	568912
368	1	17505	POGO	4064	96/10/16	987/054	568913
369	1	17505	POGO	4065	96/10/15	987/055	568914
370	1	17505	POGO	4153	96/10/20	987/056	568915
371	1	17505	POGO	4154	96/10/20	987/057	568916
372	1	17505	POGO	4155	96/10/22	987/058	568917
373	1	17505	POGO	4156	96/10/22	987/059	568918
374	1	17505	POGO	4157	96/10/22	987/060	568919
375	1	17505	POGO	4158	96/10/22	987/061	568920
376	1	17505	POGO	4159	96/10/19	987/062	568921
377	1	17505	POGO	4160	96/10/16	987/063	568922
378	1	17505	POGO	4161	96/10/16	987/064	568923
379	1	17505	POGO	4162	96/10/16	987/065	568924
380	1	17505	POGO	4163	96/10/15	987/066	568925
381	1	17505	POGO	4164	96/10/16	987/067	568926
382	1	17505	POGO	4165	96/10/13	987/068	568927
383	1	17505	POGO	4248	96/10/18	987/069	568928
384	1	17505	POGO	4249	96/10/18	987/070	568929
385	1	17505	POGO	4250	96/10/18	987/071	568930
386	1	17505	POGO	4251	96/10/18	987/072	568931
387	1	17505	POGO	4252	96/10/18	987/073	568932
388	1	17505	POGO	4253	96/10/18	987/074	568933
389	1	17505	POGO	4254	96/10/18	987/075	568934
390	1	17505	POGO	4255	96/10/18	987/076	568935



Seq	Quan	Bill No.	Claim Name		Date	Book/Page	ADL Serial No.
391	1	17505	POGO	4256	96/10/12	987/077	568936
392	1	17505	POGO	4257	96/10/12	987/078	568937
393	1	17505	POGO	4258	96/10/12	987/079	568938
394	1	17505	POGO	4259	96/10/12	987/080	568939
395	1	17505	POGO	4260	96/10/14	987/081	568940
396	1	17505	POGO	4261	96/10/14	987/082	568941
397	1	17505	POGO	4262	96/10/15	987/083	568942
398	1	17505	POGO	4263	96/10/15	987/084	568943
399	1	17505	POGO	4264	96/10/15	987/085	568944
400	1	17505	POGO	4265	96/10/15	987/086	568945
401	1	17505	POGO	4348	96/10/17	987/087	568946
402	1	17505	POGO	4349	96/10/17	987/088	568947
403	1	17505	POGO	4350	96/10/17	987/089	568948
404	1	17505	POGO	4351	96/10/17	987/090	568949
405	1	17505	POGO	4352	96/10/14	987/091	568950
406	1	17505	POGO	4353	96/10/14	987/092	568951
407	1	17505	POGO	4354	96/10/14	987/093	568952
408	1	17505	POGO	4355	96/10/14	987/094	568953
409	1	17505	POGO	4356	96/10/12	987/095	568954
410	1	17505	POGO	4357	96/10/12	987/096	568955
411	1	17505	POGO	4358	96/10/12	987/097	568956
412	1	17505	POGO	4359	96/10/12	987/098	568957
413	1	17505	POGO	4360	96/10/12	987/099	568958
414	1	17505	POGO	4361	96/10/14	987/100	568959
415	1	17505	POGO	4362	96/10/14	987/101	568960
416	1	17505	POGO	4363	96/10/15	987/102	568961
417	1	17505	POGO	4364	96/10/15	987/103	568962
418	1	17505	POGO	4365	96/10/15	987/104	568963
419	1	17505	POGO	4457	96/10/12	987/105	568964
420	1	17505	POGO	4458	96/10/12	987/106	568965
421	1	17505	POGO	4459	96/10/12	987/107	568966
422	1	17505	POGO	4460	96/10/12	987/108	568967
423	1	17505	POGO	4461	96/10/14	987/109	568968
424	1	17505	POGO	4462	96/10/14	987/110	568969
425	1	17505	POGO	4463	96/10/14	987/111	568970
426	1	17505	POGO	4464	96/10/14	987/112	568971
427	1	17505	POGO	4465	96/10/14	987/113	568972
428	1	17505	POGO	4557	96/10/15	987/114	568973
429	1	17505	POGO	4558	96/10/15	987/115	568974
430	1	17505	POGO	4559	96/10/15	987/116	568975
431	1	17505	POGO	4560	96/10/15	987/117	568976
432	1	17505	POGO	4561	96/10/15	987/118	568977
433	1	17505	POGO	4562	96/10/15	987/119	568978
434	1	17505	POGO	4563	96/10/15	987/120	568979
435	1	17505	POGO	4564	96/10/15	987/121	568980
436	1	17505	POGO	4565	96/10/15	987/122	568981
437	1	17505	POGO	47	96/10/16	987/123-124	568982
438	1	17505	POGO	147	96/10/16	987/125	568983
439	1	17505	POGO	247	96/10/16	987/126	568984
440	1	17505	POGO	48	96/04/06	958/368-369	571902
441	1	17505	POGO	49	96/04/06	958/370	571903
442	1	17505	POGO	50	96/04/06	958/371	571904
443	1	17505	POGO	51	96/04/06	958/372	571905
444	1	17505	POGO	52	96/04/06	958/373	571906
445	1	17505	POGO	53	96/04/06	958/374	571907
446	1	17505	POGO	54	96/04/06	958/375	571908



Seq	Quan	Bill No.	Claim Name		Date	Book/Page	ADL Serial No.
447	1	17505	POGO	55	96/04/06	958/376	571909
448	1	17505	POGO	56	96/04/05	958/377	571910
449	1	17505	POGO	57	96/04/05	958/378	571911
450	1	17505	POGO	58	96/04/05	958/379	571912
451	1	17505	POGO	59	96/04/05	958/380	571913
452	1	17505	POGO	148	96/04/09	958/381	571914
453	1	17505	POGO	149	96/04/06	958/382	571915
454	1	17505	POGO	150	96/04/06	958/383	571916
455	1	17505	POGO	151	96/04/06	958/384	571917
456	1	17505	POGO	152	96/04/06	958/385	571918
457	1	17505	POGO	153	96/04/05	958/386	571919
458	1	17505	POGO	154	96/04/05	958/387	571920
459	1	17505	POGO	155	96/04/05	958/388	571921
460	1	17505	POGO	156	96/04/05	958/389	571922
461	1	17505	POGO	157	96/04/05	958/390	571923
462	1	17505	POGO	158	96/04/05	958/391	571924
463	1	17505	POGO	159	96/04/05	958/392	571925
464	1	17505	POGO	250	96/04/05	958/393	571926
465	1	17505	POGO	252	96/04/06	958/394	571927
466	1	17505	POGO	350	96/04/05	958/395	571928
467	1	17505	POGO	450	96/04/05	958/396	571929
468	1	17505	POGO	451	96/04/05	958/397	571930
469	1	17505	POGO	452	96/04/05	958/398	571931
470	1	17505	POGO	551	96/04/05	958/399	571932
471	1	17505	POGO	68	96/04/11	958/400	571933
472	1	17505	POGO	69	96/04/16	958/403	571934
473	1	17505	POGO	70	96/04/14	958/404	571935
474	1	17505	POGO	71	96/04/14	958/405	571936
475	1	17505	POGO	72	96/04/14	958/406	571937
476	1	17505	POGO	73	96/04/16	958/407	571938
477	1	17505	POGO	74	96/04/18	958/408	571939
478	1	17505	POGO	168	96/04/11	958/409	571940
479	1	17505	POGO	169	96/04/14	958/410	571941
480	1	17505	POGO	170	96/04/14	958/411	571942
481	1	17505	POGO	171	96/04/14	958/412	571943
482	1	17505	POGO	172	96/04/14	958/413	571944
483	1	17505	POGO	173	96/04/16	958/414	571945
484	1	17505	POGO	174	96/04/18	958/415	571946
485	1	17505	POGO	268	96/04/11	958/416	571947
486	1	17505	POGO	269	96/04/14	958/417	571948
487	1	17505	POGO	270	96/04/14	958/418	571949
488	1	17505	POGO	271	96/04/14	958/419	571950
489	1	17505	POGO	272	96/04/14	958/420	571951
490	1	17505	POGO	273	96/04/16	958/421	571952
491	1	17505	POGO	274	96/04/18	958/422	571953
492	1	17505	POGO	368	96/04/11	958/423	571954
493	1	17505	POGO	369	96/04/14	958/424	571955
494	1	17505	POGO	370	96/04/14	958/425	571956
495	1	17505	POGO	371	96/04/14	958/426	571957
496	1	17505	POGO	372	96/04/14	958/427	571958
497	1	17505	POGO	373	96/04/13	958/428	571959
498	1	17505	POGO	374	96/04/13	958/429	571960
499	1	17505	POGO	468	96/04/12	958/430	571961
500	1	17505	POGO	469	96/04/12	958/431	571962
501	1	17505	POGO	470	96/04/12	958/432	571963
502	1	17505	POGO	471	96/04/12	958/433	571964

Sumitomo Metal Mining Pogo LLC



Pogo Plan of Operations – Appendix A

Seq	Quan	Bill No.	Claim Name		Date	Book/Page	ADL Serial No.
503	1	17505	POGO	472	96/04/12	958/434	571965
504	1	17505	POGO	473	96/04/13	958/435	571966
505	1	17505	POGO	474	96/04/13	958/436	571967
506	1	17505	POGO	1256	96/04/20	958/437-438	571968
507	1	17505	POGO	1257	96/04/20	958/439	571969
508	1	17505	POGO	1356	96/04/20	958/440	571970
509	1	17505	POGO	1357	96/04/20	958/441	571971
510	1	17505	POGO	1456	96/04/20	958/442	571972
511	1	17505	POGO	1457	96/04/20	958/443	571973
512	1	17505	POGO	1556	96/04/20	958/444	571974
513	1	17505	POGO	1557	96/04/20	958/445	571975
514	1	17505	POGO	1655	96/04/20	958/446	571976
515	1	17505	POGO	1656	96/04/20	958/447	571977
516	1	17505	POGO	1657	96/04/20	958/448	571978
517	1	17505	POGO	1755	96/04/20	958/449	571979
518	1	17505	POGO	1756	96/04/20	958/450	571980
519	1	17505	POGO	1757	96/04/20	958/451	571981
520	1	17505	POGO	1855	96/04/20	958/452	571982
521	1	17505	POGO	1856	96/04/20	958/453	571983
522	1	17505	POGO	1857	96/04/20	958/454	571984
523	1	17505	POGO	4066	96/04/13	958/455-457	571985
524	1	17505	POGO	4067	96/04/13	958/458	571986
525	1	17505	POGO	4068	96/04/14	958/459	571987
526	1	17505	POGO	4069	96/04/17	958/460	571988
527	1	17505	POGO	4070	96/04/17	958/461	571989
528	1	17505	POGO	4071	96/04/17	958/462	571990
529	1	17505	POGO	4072	96/04/16	958/463	571991
530	1	17505	POGO	4073	96/04/18	958/464	571992
531	1	17505	POGO	4074	96/04/18	958/465	571993
532	1	17505	POGO	4166	96/04/13	958/466	571994
533	1	17505	POGO	4167	96/04/13	958/467	571995
534	1	17505	POGO	4168	96/04/14	958/468	571996
535	1	17505	POGO	4169	96/04/17	958/469	571997
536	1	17505	POGO	4170	96/04/17	958/470	571998
537	1	17505	POGO	4171	96/04/17	958/471	571999
538	1	17505	POGO	4172	96/04/17	958/472	572000
539	1	17505	POGO	4173	96/04/17	958/473	572001
540	1	17505	POGO	4174	96/04/18	958/474	572002
541	1	17505	POGO	4266	96/04/13	958/475	572003
542	1	17505	POGO	4267	96/04/13	958/476	572004
543	1	17505	POGO	4268	96/04/14	958/477	572005
544	1	17505	POGO	4269	96/04/17	958/478	572006
545	1	17505	POGO	4270	96/04/17	958/479	572007
546	1	17505	POGO	4271	96/04/16	958/480	572008
547	1	17505	POGO	4272	96/04/17	958/481	572009
548	1	17505	POGO	4273	96/04/18	958/482	572010
549	1	17505	POGO	4274	96/04/18	958/483	572011
550	1	17505	POGO	4275	96/04/18	958/484	572012
551	1	17505	POGO	4276	96/04/18	958/485	572013
552	1	17505	POGO	4277	96/04/18	958/486	572014
553	1	17505	POGO	4278	96/04/19	958/487	572015
554	1	17505	POGO	4366	96/04/13	958/488	572016
555	1	17505	POGO	4367	96/04/13	958/489	572017
556	1	17505	POGO	4368	96/04/13	958/490	572018
557	1	17505	POGO	4369	96/04/16	958/491	572019
558	1	17505	POGO	4370	96/04/16	958/492	572020



Seq	Quan	Bill No.	Claim Name		Date	Book/Page	ADL Serial No.
559	1	17505	POGO	4371	96/04/16	958/493	572021
560	1	17505	POGO	4372	96/04/16	958/494	572022
561	1	17505	POGO	4373	96/04/17	958/495	572023
562	1	17505	POGO	4374	96/04/18	958/496	572024
563	1	17505	POGO	4375	96/04/19	958/497	572025
564	1	17505	POGO	4376	96/04/19	958/498	572026
565	1	17505	POGO	4377	96/04/19	958/499	572027
566	1	17505	POGO	4378	96/04/19	958/500	572028
567	1	17505	POGO	4466	96/04/13	958/501	572029
568	1	17505	POGO	4467	96/04/13	958/502	572030
569	1	17505	POGO	4468	96/04/13	958/503	572031
570	1	17505	POGO	4469	96/04/16	958/504	572032
571	1	17505	POGO	4470	96/04/16	958/505	572033
572	1	17505	POGO	4471	96/04/16	958/506	572034
573	1	17505	POGO	4472	96/04/16	958/507	572035
574	1	17505	POGO	4473	96/04/17	958/508	572036
575	1	17505	POGO	4474	96/04/18	958/509	572037
576	1	17505	POGO	4475	96/04/19	958/510	572038
577	1	17505	POGO	4476	96/04/19	958/511	572039
578	1	17505	POGO	4477	96/04/19	958/512	572040
579	1	17505	POGO	4478	96/04/19	958/513	572041
580	1	17505	POGO	4566	96/04/13	958/514	572042
581	1	17505	POGO	4567	96/04/12	958/515	572043
582	1	17505	POGO	4568	96/04/13	958/516	572044
583	1	17505	POGO	4569	96/04/16	958/517	572045
584	1	17505	POGO	4570	96/04/16	958/518	572046
585	1	17505	POGO	4571	96/04/16	958/519	572047
586	1	17505	POGO	4572	96/04/16	958/520	572048
587	1	17505	POGO	4573	96/04/17	958/521	572049
588	1	17505	POGO	4574	96/04/18	958/522	572050
589	1	17505	POGO	4575	96/04/19	958/523	572051
590	1	17505	POGO	4576	96/04/19	958/524	572052
591	1	17505	POGO	4577	96/04/19	958/525	572053
592	1	17505	POGO	4578	96/04/19	958/526	572054
593	1	17505	POGO	4657	96/04/10	958/527	572055
594	1	17505	POGO	4658	96/04/10	958/528	572056
595	1	17505	POGO	4659	96/04/10	958/529	572057
596	1	17505	POGO	4660	96/04/10	958/530	572058
597	1	17505	POGO	4661	96/04/11	958/531	572059
598	1	17505	POGO	4662	96/04/11	958/532	572060
599	1	17505	POGO	4663	96/04/11	958/533	572061
600	1	17505	POGO	4664	96/04/11	958/534	572062
601	1	17505	POGO	4665	96/04/12	958/535	572063
602	1	17505	POGO	4666	96/04/12	958/536	572064
603	1	17505	POGO	4667	96/04/12	958/537	572065
604	1	17505	POGO	4668	96/04/13	958/538	572066
605	1	17505	POGO	4669	96/04/16	958/539	572067
606	1	17505	POGO	4670	96/04/16	958/540	572068
607	1	17505	POGO	4671	96/04/16	958/541	572069
608	1	17505	POGO	4672	96/04/16	958/542	572070
609	1	17505	POGO	4673	96/04/17	958/543	572071
610	1	17505	POGO	4674	96/04/18	958/544	572072
611	1	17505	POGO	4675	96/04/19	958/545	572073
612	1	17505	POGO	4676	96/04/19	958/546	572074
613	1	17505	POGO	4677	96/04/19	958/547	572075
614	1	17505	POGO	4678	96/04/19	958/548	572076



Seq	Quan	Bill No.	Claim Name		Date	Book/Page	ADL Serial No.
615	1	17505	POGO	4757	96/04/10	958/549	572077
616	1	17505	POGO	4758	96/04/10	958/550	572078
617	1	17505	POGO	4759	96/04/10	958/551	572079
618	1	17505	POGO	4760	96/04/10	958/552	572080
619	1	17505	POGO	4761	96/04/11	958/553	572081
620	1	17505	POGO	4762	96/04/11	958/554	572082
621	1	17505	POGO	4763	96/04/11	958/555	572083
622	1	17505	POGO	4764	96/04/11	958/556	572084
623	1	17505	POGO	4765	96/04/12	958/557	572085
624	1	17505	POGO	4766	96/04/12	958/558	572086
625	1	17505	POGO	4767	96/04/12	958/559	572087
626	1	17505	POGO	4768	96/04/13	958/560	572088
627	1	17505	POGO	4769	96/04/16	958/561	572089
628	1	17505	POGO	4770	96/04/16	958/562	572090
629	1	17505	POGO	4771	96/04/16	958/563	572091
630	1	17505	POGO	4772	96/04/16	958/564	572092
631	1	17505	POGO	4773	96/04/16	958/565	572093
632	1	17505	POGO	4774	96/04/18	958/566	572094
633	1	17505	POGO	4775	96/04/19	958/567	572095
634	1	17505	POGO	4776	96/04/19	958/568	572096
635	1	17505	POGO	4777	96/04/19	958/569	572097
636	1	17505	POGO	4778	96/04/19	958/570	572098
637	1	17505	POGO	4857	96/04/10	958/571	572099
638	1	17505	POGO	4858	96/04/10	958/572	572100
639	1	17505	POGO	4859	96/04/10	958/573	572101
640	1	17505	POGO	4860	96/04/10	958/574	572102
641	1	17505	POGO	4861	96/04/11	958/575	572103
642	1	17505	POGO	4862	96/04/11	958/576	572104
643	1	17505	POGO	4863	96/04/11	958/577	572105
644	1	17505	POGO	4864	96/04/11	958/578	572106
645	1	17505	POGO	4865	96/04/12	958/579	572107
646	1	17505	POGO	4866	96/04/12	958/580	572108
647	1	17505	POGO	4867	96/04/12	958/581	572109
648	1	17505	POGO	4868	96/04/13	958/582	572110
649	1	17505	POGO	4869	96/04/16	958/583	572111
650	1	17505	POGO	4870	96/04/14	958/584	572112
651	1	17505	POGO	4871	96/04/14	958/585	572113
652	1	17505	POGO	4872	96/04/16	958/586	572114
653	1	17505	POGO	4873	96/04/16	958/587	572115
654	1	17505	POGO	4874	96/04/18	958/588	572116
655	1	17505	POGO	4875	96/04/19	958/589	572117
656	1	17505	POGO	4876	96/04/19	958/590	572118
657	1	17505	POGO	4877	96/04/19	958/591	572119
658	1	17505	POGO	4878	96/04/19	958/592	572120
659	1	17505	POGO	4957	96/04/06	958/593	572121
660	1	17505	POGO	4958	96/04/06	958/594	572122
661	1	17505	POGO	4959	96/04/10	958/595	572123
662	1	17505	POGO	4960	96/04/10	958/596	572124
663	1	17505	POGO	4961	96/04/11	958/597	572125
664	1	17505	POGO	4962	96/04/11	958/598	572126
665	1	17505	POGO	4963	96/04/11	958/599	572127
666	1	17505	POGO	4964	96/04/11	958/600	572128
667	1	17505	POGO	4965	96/04/12	958/601	572129
668	1	17505	POGO	4966	96/04/12	958/602	572130
669	1	17505	POGO	4967	96/04/12	958/603	572131
670	1	17505	POGO	4968	96/04/13	958/604	572132



Seq	Quan	Bill No.	Claim Name		Date	Book/Page	ADL Serial No.
671	1	17505	POGO	4969	96/04/16	958/605	572133
672	1	17505	POGO	4970	96/04/14	958/606	572134
673	1	17505	POGO	4971	96/04/14	958/607	572135
674	1	17505	POGO	4972	96/04/14	958/608	572136
675	1	17505	POGO	4973	96/04/16	958/609	572137
676	1	17505	POGO	4974	96/04/18	958/610	572138
677	1	17505	POGO	4975	96/04/19	958/611	572139
678	1	17505	POGO	4976	96/04/19	958/612	572140
679	1	17505	POGO	4977	96/04/19	958/613	572141
680	1	17505	POGO	4978	96/04/19	958/614	572142
681	1	17505	POGO	5057	96/04/05	958/615	572143
682	1	17505	POGO	5058	96/04/06	958/616	572144
683	1	17505	POGO	5059	96/04/05	958/617	572145
684	1	17505	POGO	5060	96/04/10	958/618	572146
685	1	17505	POGO	5061	96/04/10	958/619	572147
686	1	17505	POGO	5062	96/04/10	958/620	572148
687	1	17505	POGO	5063	96/04/10	958/621	572149
688	1	17505	POGO	5064	96/04/10	958/622	572150
689	1	17505	POGO	5065	96/04/10	958/623	572151
690	1	17505	POGO	5066	96/04/11	958/624	572152
691	1	17505	POGO	5067	96/04/11	958/625	572153
692	1	17505	POGO	5068	96/04/11	958/626	572154
693	1	17505	POGO	5069	96/04/16	958/627	572155
694	1	17505	POGO	5070	96/04/14	958/628	572156
695	1	17505	POGO	5071	96/04/14	958/629	572157
696	1	17505	POGO	5072	96/04/14	958/630	572158
697	1	17505	POGO	5073	96/04/16	958/631	572159
698	1	17505	POGO	5074	96/04/18	958/632	572160
699	1	17505	POGO	5075	96/04/18	958/633	572161
700	1	17505	POGO	5076	96/04/18	958/634	572162
701	1	17505	POGO	5077	96/04/18	958/635	572163
702	1	17505	POGO	5078	96/04/18	958/636	572164
703	1	17505	POGO	75	97/03/14	1006/932-933	574904
704	1	17505	POGO	76	97/03/14	1006/934	574905
705	1	17505	POGO	77	97/03/14	1006/935	574906
706	1	17505	POGO	78	97/03/14	1006/936	574907
707	1	17505	POGO	79	97/03/14	1006/937	574908
708	1	17505	POGO	80	97/03/14	1006/938	574909
709	1	17505	POGO	81	97/03/14	1006/939	574910
710	1	17505	POGO	82	97/03/14	1006/940	574911
711	1	17505	POGO	175	97/03/14	1006/941	574912
712	1	17505	POGO	176	97/03/14	1006/942	574913
713	1	17505	POGO	177	97/03/14	1006/943	574914
714	1	17505	POGO	178	97/03/15	1006/944	574915
715	1	17505	POGO	179	97/03/16	1006/945	574916
716	1	17505	POGO	180	97/03/16	1006/946	574917
717	1	17505	POGO	181	97/03/16	1006/947	574918
718	1	17505	POGO	182	97/03/16	1006/948	574919
719	1	17505	POGO	275	97/03/14	1006/949	574920
720	1	17505	POGO	276	97/03/14	1006/950	574921
721	1	17505	POGO	277	97/03/14	1006/951	574922
722	1	17505	POGO	278	97/03/15	1006/952	574923
723	1	17505	POGO	279	97/03/16	1006/953	574924
724	1	17505	POGO	280	97/03/16	1006/954	574925
725	1	17505	POGO	281	97/03/16	1006/955	574926
726	1	17505	POGO	282	97/03/16	1006/956	574927



Seq	Quan	Bill No.	Claim Name		Date	Book/Page	ADL Serial No.
727	1	17505	POGO	375	97/03/14	1006/957	574928
728	1	17505	POGO	376	97/03/14	1006/958	574929
729	1	17505	POGO	377	97/03/14	1006/959	574930
730	1	17505	POGO	378	97/03/15	1006/960	574931
731	1	17505	POGO	379	97/03/16	1006/961	574932
732	1	17505	POGO	380	97/03/16	1006/962	574933
733	1	17505	POGO	381	97/03/16	1006/963	574934
734	1	17505	POGO	382	97/03/16	1006/964	574935
735	1	17505	POGO	475	97/03/14	1006/965	574936
736	1	17505	POGO	476	97/03/14	1006/966	574937
737	1	17505	POGO	477	97/03/14	1006/967	574938
738	1	17505	POGO	478	97/03/15	1006/968	574939
739	1	17505	POGO	479	97/03/16	1006/969	574940
740	1	17505	POGO	480	97/03/16	1006/970	574941
741	1	17505	POGO	481	97/03/16	1006/971	574942
742	1	17505	POGO	482	97/03/16	1006/972	574943
743	1	17505	POGO	4679	97/03/15	1006/973	574944
744	1	17505	POGO	4680	97/03/15	1006/974	574945
745	1	17505	POGO	4681	97/03/15	1006/975	574946
746	1	17505	POGO	4682	97/03/15	1006/976	574947
747	1	17505	POGO	4779	97/03/15	1006/977	574948
748	1	17505	POGO	4780	97/03/15	1006/978	574949
749	1	17505	POGO	4781	97/03/15	1006/979	574950
750	1	17505	POGO	4782	97/03/15	1006/980	574951
751	1	17505	POGO	4879	97/03/14	1006/981	574952
752	1	17505	POGO	4880	97/03/15	1006/982	574953
753	1	17505	POGO	4881	97/03/15	1006/983	574954
754	1	17505	POGO	4882	97/03/15	1006/984	574955
755	1	17505	POGO	4979	97/03/15	1006/985	574956
756	1	17505	POGO	4980	97/03/15	1006/986	574957
757	1	17505	POGO	4981	97/03/15	1006/987	574958
758	1	17505	POGO	4982	97/03/15	1006/988	574959
759	1	17505	POGO	5079	97/03/14	1006/989	574960
760	1	17505	POGO	5080	97/03/14	1006/990	574961
761	1	17505	POGO	5081	97/03/14	1006/991	574962
762	1	17505	POGO	5082	97/03/14	1006/992	574963
763	1	17505	POGO	741	97/03/17	1006/993	574964
764	1	17505	POGO	742	97/03/17	1006/995	574965
765	1	17505	POGO	743	97/03/17	1006/996	574966
766	1	17505	POGO	843	97/03/17	1006/997	574967
767	1	17505	POGO	4945	97/03/18	1006/998	574968
768	1	17505	POGO	4946	97/03/18	1007/001	574969
769	1	17505	POGO	4947	97/03/18	1007/002	574970
770	1	17505	POGO	4948	97/03/17	1007/003	574971
771	1	17505	POGO	5045	97/03/17	1007/004	574972
772	1	17505	POGO	5046	97/03/17	1007/005	574973
773	1	17505	POGO	5047	97/03/17	1007/006	574974
774	1	17505	POGO	5048	97/03/17	1007/007	574975
775	1	17505	POGO	40	97/06/05	1020/824	575390
776	1	17505	POGO	41	97/06/05	1020/827	575391
777	1	17505	POGO	42	97/06/05	1020/828	575392
778	1	17505	POGO	43	97/06/05	1020/829	575393
779	1	17505	POGO	44	97/06/05	1020/830	575394
780	1	17505	POGO	140	97/06/06	1020/831	575395
781	1	17505	POGO	141	97/06/06	1020/832	575396
782	1	17505	POGO	142	97/06/06	1020/833	575397



Seq	Quan	Bill No.	Claim Name		Date	Book/Page	ADL Serial No.
783	1	17505	POGO	143	97/06/06	1020/834	575398
784	1	17505	POGO	144	97/06/06	1020/835	575399
785	1	17505	POGO	240	97/06/06	1020/836	575400
786	1	17505	POGO	241	97/06/06	1020/837	575401
787	1	17505	POGO	242	97/06/06	1020/838	575402
788	1	17505	POGO	243	97/06/06	1020/839	575403
789	1	17505	POGO	244	97/06/06	1020/840	575404
790	1	17505	POGO	340	97/06/06	1020/841	575405
791	1	17505	POGO	341	97/06/06	1020/842	575406
792	1	17505	POGO	342	97/06/06	1020/843	575407
793	1	17505	POGO	343	97/06/06	1020/844	575408
794	1	17505	POGO	344	97/06/06	1020/845	575409
795	1	17505	POGO	440	97/06/06	1020/846	575410
796	1	17505	POGO	441	97/06/15	1020/847	575411
797	1	17505	POGO	442	97/06/15	1020/848	575412
798	1	17505	POGO	443	97/06/06	1020/849	575413
799	1	17505	POGO	444	97/06/06	1020/850	575414
800	1	17505	POGO	540	97/06/06	1020/851	575415
801	1	17505	POGO	541	97/06/14	1020/852	575416
802	1	17505	POGO	542	97/06/15	1020/853	575417
803	1	17505	POGO	543	97/06/15	1020/854	575418
804	1	17505	POGO	544	97/06/15	1020/855	575419
805	1	17505	POGO	640	97/06/06	1020/856	575420
806	1	17505	POGO	641	97/06/14	1020/857	575421
807	1	17505	POGO	642	97/06/14	1020/858	575422
808	1	17505	POGO	643	97/06/14	1020/859	575423
809	1	17505	POGO	644	97/06/14	1020/860	575424
810	1	17505	POGO	740	97/06/15	1020/861	575425
811	1	17505	POGO	840	97/06/06	1020/862	575426
812	1	17505	POGO	841	97/06/06	1020/863	575427
813	1	17505	POGO	842	97/06/06	1020/864	575428
814	1	17505	POGO	940	97/06/15	1020/865	575429
815	1	17505	POGO	941	97/06/15	1020/866	575430
816	1	17505	POGO	942	97/06/14	1020/867	575431
817	1	17505	POGO	943	97/06/14	1020/868	575432
818	1	17505	POGO	1040	97/06/15	1020/869	575433
819	1	17505	POGO	1041	97/06/15	1020/870	575434
820	1	17505	POGO	1042	97/06/14	1020/871	575435
821	1	17505	POGO	1043	97/06/14	1020/872	575436
822	1	17505	POGO	1140	97/06/15	1020/873	575437
823	1	17505	POGO	1141	97/06/15	1020/874	575438
824	1	17505	POGO	1142	97/06/14	1020/875	575439
825	1	17505	POGO	1143	97/06/14	1020/876	575440
826	1	17505	POGO	1240	97/06/15	1020/877	575441
827	1	17505	POGO	1241	97/06/15	1020/878	575442
828	1	17505	POGO	1242	97/06/14	1020/879	575443
829	1	17505	POGO	1243	97/06/14	1020/880	575444
830	1	17505	POGO	1340	97/06/15	1020/881	575445
831	1	17505	POGO	1341	97/06/15	1020/882	575446
832	1	17505	POGO	1342	97/06/14	1020/883	575447
833	1	17505	POGO	1440	97/06/15	1020/884	575448
834	1	17505	POGO	1441	97/06/15	1020/885	575449
835	1	17505	POGO	1442	97/06/14	1020/886	575450
836	1	17505	POGO	1540	97/06/15	1020/887	575451
837	1	17505	POGO	1541	97/06/15	1020/888	575452
838	1	17505	POGO	1542	97/06/14	1020/889	575453



Seq	Quan	Bill No.	Claim Name		Date	Book/Page	ADL Serial No.
839	1	17505	POGO	1640	97/06/15	1020/890	575454
840	1	17505	POGO	1641	97/06/15	1020/891	575455
841	1	17505	POGO	1642	97/06/01	1020/892	575456
842	1	17505	POGO	1643	97/06/01	1020/893	575457
843	1	17505	POGO	1644	97/06/01	1020/894	575458
844	1	17505	POGO	1645	97/06/01	1020/895	575459
845	1	17505	POGO	1740	97/06/01	1020/896	575460
846	1	17505	POGO	1741	97/06/01	1020/897	575461
847	1	17505	POGO	1742	97/06/01	1020/898	575462
848	1	17505	POGO	1743	97/06/01	1020/899	575463
849	1	17505	POGO	1744	97/06/01	1020/900	575464
850	1	17505	POGO	1745	97/06/01	1020/901	575465
851	1	17505	POGO	1746A	97/05/29	1020/902	575466
852	1	17505	POGO	1747A	97/05/29	1020/903	575467
853	1	17505	POGO	1748A	97/05/29	1020/904	575468
854	1	17505	POGO	1749A	97/05/29	1020/905	575469
855	1	17505	POGO	1750A	97/06/14	1020/906	575470
856	1	17505	POGO	1846	97/05/29	1020/907	575471
857	1	17505	POGO	1847	97/05/29	1020/908	575472
858	1	17505	POGO	1848	97/05/29	1020/909	575473
859	1	17505	POGO	1849	97/05/29	1020/910	575474
860	1	17505	POGO	1850	97/05/29	1020/911	575475
861	1	17505	POGO	1851	97/05/29	1020/912	575476
862	1	17505	POGO	1852	97/05/29	1020/913	575477
863	1	17505	POGO	4940	97/06/05	1020/914	575478
864	1	17505	POGO	4941	97/06/05	1020/915	575479
865	1	17505	POGO	4942	97/06/05	1020/916	575480
866	1	17505	POGO	4943	97/06/05	1020/917	575481
867	1	17505	POGO	4944	97/06/05	1020/918	575482
868	1	17505	POGO	5040	97/06/06	1020/919	575483
869	1	17505	POGO	5041	97/06/06	1020/920	575484
870	1	17505	POGO	5042	97/06/06	1020/921	575485
871	1	17505	POGO	5043	97/06/06	1020/922	575486
872	1	17505	POGO	5044	97/06/06	1020/923	575487
873	1	17505	POGO	3873	97/10/10	1042/097-099	592661
874	1	17505	POGO	3874	97/10/11	1042/100	592662
875	1	17505	POGO	3875	97/10/11	1042/101	592663
876	1	17505	POGO	3876	97/10/07	1042/102	592664
877	1	17505	POGO	3877	97/10/07	1042/103	592665
878	1	17505	POGO	3878	97/10/07	1042/104	592666
879	1	17505	POGO	3879	97/10/07	1042/105	592667
880	1	17505	POGO	3880	97/10/07	1042/106	592668
881	1	17505	POGO	3881	97/10/08	1042/107	592669
882	1	17505	POGO	3973	97/10/08	1042/108	592670
883	1	17505	POGO	3974	97/10/08	1042/109	592671
884	1	17505	POGO	3975	97/10/08	1042/110	592672
885	1	17505	POGO	3976	97/10/08	1042/111	592673
886	1	17505	POGO	3977	97/10/08	1042/112	592674
887	1	17505	POGO	3978	97/10/10	1042/113	592675
888	1	17505	POGO	3979	97/10/08	1042/114	592676
889	1	17505	POGO	3980	97/10/07	1042/115	592677
890	1	17505	POGO	3981	97/10/08	1042/116	592678
891	1	17505	POGO	4075	97/10/10	1042/117	592679
892	1	17505	POGO	4076	97/10/10	1042/118	592680
893	1	17505	POGO	4077	97/10/10	1042/119	592681
894	1	17505	POGO	4078	97/10/10	1042/120	592682



Seq	Quan	Bill No.	Claim Name		Date	Book/Page	ADL Serial No.
895	1	17505	POGO	4079	97/10/07	1042/121	592683
896	1	17505	POGO	4080	97/10/07	1042/122	592684
897	1	17505	POGO	4081	97/10/08	1042/123	592685
898	1	17505	POGO	4082	97/10/07	1042/124	592686
899	1	17505	POGO	4083	97/10/07	1042/125	592687
900	1	17505	POGO	4175	97/10/10	1042/126	592688
901	1	17505	POGO	4176	97/10/10	1042/127	592689
902	1	17505	POGO	4177	97/10/10	1042/128	592690
903	1	17505	POGO	4178	97/10/10	1042/129	592691
904	1	17505	POGO	4179	97/10/07	1042/130	592692
905	1	17505	POGO	4180	97/10/07	1042/131	592693
906	1	17505	POGO	4181	97/10/08	1042/132	592694
907	1	17505	POGO	4182	97/10/07	1042/133	592695
908	1	17505	POGO	4183	97/10/07	1042/134	592696
909	1	17505	POGO	4279	97/10/07	1042/135	592697
910	1	17505	POGO	4280	97/10/07	1042/136	592698
911	1	17505	POGO	4281	97/10/10	1042/137	592699
912	1	17505	POGO	4282	97/10/07	1042/138	592700
913	1	17505	POGO	4283	97/10/07	1042/139	592701
914	1	17505	POGO	4379	97/10/07	1042/140	592702
915	1	17505	POGO	4380	97/10/07	1042/141	592703
916	1	17505	POGO	4381	97/10/10	1042/142	592704
917	1	17505	POGO	4382	97/10/07	1042/143	592705
918	1	17505	POGO	4383	97/10/07	1042/144	592706
919	1	17505	POGO	4479	97/10/07	1042/145	592707
920	1	17505	POGO	4480	97/10/04	1042/146	592708
921	1	17505	POGO	4481	97/10/10	1042/147	592709
922	1	17505	POGO	4482	97/10/07	1042/148	592710
923	1	17505	POGO	4483	97/10/07	1042/149	592711
924	1	17505	POGO	4579	97/10/07	1042/150	592712
925	1	17505	POGO	4580	97/10/04	1042/151	592713
926	1	17505	POGO	4581	97/10/10	1042/152	592714
927	1	17505	POGO	4582	97/10/06	1042/153	592715
928	1	17505	POGO	4583	97/10/06	1042/154	592716
929	1	17505	POGO	4683	97/10/06	1042/155	592717
930	1	17505	POGO	4783	97/10/06	1042/156	592718
931	1	17505	POGO	4883	97/10/06	1042/157	592719
932	1	17505	POGO	4983	97/10/06	1042/158	592720
933	1	17505	POGO	5083	97/10/03	1042/159	592721
934	1	17505	POGO	83	97/10/03	1042/160	592722
935	1	17505	POGO	183	97/10/03	1042/161	592723
936	1	17505	POGO	283	97/10/03	1042/162	592724
937	1	17505	POGO	383	97/10/03	1042/163	592725
938	1	17505	POGO	483	97/10/03	1042/164	592726
939	1	17505	POGO	582	97/10/03	1042/165	592727
940	1	17505	POGO	583	97/10/03	1042/166	592728
941	1	17505	POGO	682	97/10/03	1042/167	592729
942	1	17505	POGO	683	97/10/03	1042/168	592730
943	1	17505	POGO	3364	96/10/13	1042/169-170	592731
944	1	17505	POGO	3365	96/10/13	1042/171	592732
945	1	17505	POGO	3366	96/10/13	1042/172	592733
946	1	17505	POGO	3367	96/10/13	1042/173	592734
947	1	17505	POGO	3368	96/10/13	1042/174	592735
948	1	17505	POGO	3369	96/10/13	1042/175	592736
949	1	17505	POGO	3370	96/10/13	1042/176	592737
950	1	17505	POGO	3371	96/10/13	1042/177	592738



Seq	Quan	Bill No.	Claim Name		Date	Book/Page	ADL Serial No.
951	1	17505	POGO	3372	96/10/13	1042/178	592739
952	1	17505	POGO	3464	96/10/13	1042/179	592740
953	1	17505	POGO	3465	96/10/13	1042/180	592741
954	1	17505	POGO	3466	96/10/13	1042/181	592742
955	1	17505	POGO	3467	97/10/11	1042/182	592743
956	1	17505	POGO	3468	97/10/11	1042/183	592744
957	1	17505	POGO	3469	97/10/11	1042/184	592745
958	1	17505	POGO	3470	97/10/11	1042/185	592746
959	1	17505	POGO	3471	97/10/11	1042/186	592747
960	1	17505	POGO	3472	97/10/11	1042/187	592748
961	1	17505	POGO	3564	96/10/13	1042/188	592749
962	1	17505	POGO	3565	97/10/11	1042/189	592750
963	1	17505	POGO	3566	97/10/11	1042/190	592751
964	1	17505	POGO	3567	97/10/11	1042/191	592752
965	1	17505	POGO	3568	97/10/11	1042/192	592753
966	1	17505	POGO	3569	97/10/11	1042/193	592754
967	1	17505	POGO	3570	97/10/11	1042/194	592755
968	1	17505	POGO	3571	97/10/11	1042/195	592756
969	1	17505	POGO	3572	97/10/11	1042/196	592757
970	1	17505	POGO	3664	97/10/11	1042/197	592758
971	1	17505	POGO	3665	97/10/11	1042/198	592759
972	1	17505	POGO	3666	97/10/10	1042/199	592760
973	1	17505	POGO	3667	96/10/13	1042/200	592761
974	1	17505	POGO	3668	97/10/10	1042/201	592762
975	1	17505	POGO	3669	97/10/10	1042/202	592763
976	1	17505	POGO	3670	97/10/10	1042/203	592764
977	1	17505	POGO	3671	97/10/10	1042/204	592765
978	1	17505	POGO	3672	97/10/10	1042/205	592766
979	1	17505	POGO	3764	97/10/11	1042/206	592767
980	1	17505	POGO	3765	97/10/11	1042/207	592768
981	1	17505	POGO	3766	97/10/11	1042/208	592769
982	1	17505	POGO	3767	97/10/11	1042/209	592770
983	1	17505	POGO	3768	97/10/11	1042/210	592771
984	1	17505	POGO	3769	97/10/11	1042/211	592772
985	1	17505	POGO	3770	97/10/11	1042/212	592773
986	1	17505	POGO	3771	97/10/11	1042/213	592774
987	1	17505	POGO	3772	97/10/10	1042/214	592775
988	1	17505	POGO	763	97/10/03	1042/215-217	592776
989	1	17505	POGO	764	97/10/03	1042/218	592777
990	1	17505	POGO	765	97/10/03	1042/219	592778
991	1	17505	POGO	766	97/10/06	1042/220	592779
992	1	17505	POGO	767	97/10/06	1042/221	592780
993	1	17505	POGO	768	97/10/03	1042/222	592781
994	1	17505	POGO	863	97/10/03	1042/223	592782
995	1	17505	POGO	864	97/10/03	1042/224	592783
996	1	17505	POGO	865	97/10/03	1042/225	592784
997	1	17505	POGO	866	97/10/03	1042/226	592785
998	1	17505	POGO	867	97/10/03	1042/227	592786
999	1	17505	POGO	868	97/10/03	1042/228	592787
1000	1	17505	POGO	963	97/10/03	1042/229	592788
1001	1	17505	POGO	964	97/10/03	1042/230	592789
1002	1	17505	POGO	965	97/10/03	1042/231	592790
1003	1	17505	POGO	1063	97/10/03	1042/232	592791
1004	1	17505	POGO	1064	97/10/03	1042/233	592792
1005	1	17505	POGO	1065	97/10/03	1042/234	592793
1006	1	17505	POGO	1163	97/10/02	1042/235	592794



Seq	Quan	Bill No.	Claim Name		Date	Book/Page	ADL Serial No.
1007	1	17505	POGO	1164	97/10/02	1042/236	592795
1008	1	17505	POGO	1165	97/10/02	1042/237	592796
1009	1	17505	POGO	1258	97/10/02	1042/238	592797
1010	1	17505	POGO	1259	97/10/02	1042/239	592798
1011	1	17505	POGO	1260	97/10/02	1042/240	592799
1012	1	17505	POGO	1261	97/10/02	1042/241	592800
1013	1	17505	POGO	1262	97/10/02	1042/242	592801
1014	1	17505	POGO	1263	97/10/02	1042/243	592802
1015	1	17505	POGO	1264	97/10/02	1042/244	592803
1016	1	17505	POGO	1265	97/10/02	1042/245	592804
1017	1	17505	POGO	1358	97/10/02	1042/246	592805
1018	1	17505	POGO	1359	97/10/02	1042/247	592806
1019	1	17505	POGO	1360	97/10/02	1042/248	592807
1020	1	17505	POGO	1361	97/10/02	1042/249	592808
1021	1	17505	POGO	1362	97/10/02	1042/250	592809
1022	1	17505	POGO	1363	97/10/02	1042/251	592810
1023	1	17505	POGO	1364	97/10/02	1042/252	592811
1024	1	17505	POGO	1365	97/10/02	1042/253	592812
1025	1	17505	POGO	1458	97/10/02	1042/254	592813
1026	1	17505	POGO	1459	97/10/02	1042/255	592814
1027	1	17505	POGO	1460	97/10/02	1042/256	592815
1028	1	17505	POGO	1461	97/10/02	1042/257	592816
1029	1	17505	POGO	1462	97/10/02	1042/258	592817
1030	1	17505	POGO	1463	97/10/02	1042/259	592818
1031	1	17505	POGO	1464	97/10/02	1042/260	592819
1032	1	17505	POGO	1465	97/10/02	1042/261	592820
1033	1	17505	POGO	1740A	97/10/01	1042/262-263	592821
1034	1	17505	POGO	1741A	97/10/01	1042/264	592822
1035	1	17505	POGO	1742A	97/10/01	1042/265	592823
1036	1	17505	POGO	1743A	97/10/01	1042/266	592824
1037	1	17505	POGO	1744A	97/10/01	1042/267	592825
1038	1	17505	POGO	1745A	97/10/01	1042/268	592826
1039	1	17505	POGO	1840	97/10/01	1042/269	592827
1040	1	17505	POGO	1841	97/10/01	1042/270	592828
1041	1	17505	POGO	1842	97/10/01	1042/271	592829
1042	1	17505	POGO	1843	97/10/01	1042/272	592830
1043	1	17505	POGO	1844	97/10/01	1042/273	592831
1044	1	17505	POGO	1845	97/10/01	1042/274	592832
1045	1	17505	POGO	4748	98/05/14	1066/567-568	593465
1046	1	17505	POGO	4749	98/05/14	1066/569	593466
1047	1	17505	POGO	4750	98/05/14	1066/570	593467
1048	1	17505	POGO	4751	98/05/14	1066/571	593468
1049	1	17505	POGO	4752	98/05/14	1066/572	593469
1050	1	17505	POGO	4753	98/05/14	1066/573	593470
1051	1	17505	POGO	4754	98/05/14	1066/574	593471
1052	1	17505	POGO	4755	98/05/14	1066/575	593472
1053	1	17505	POGO	4756	98/05/14	1066/576	593473
1054	1	17505	POGO	4848	98/05/14	1066/577	593474
1055	1	17505	POGO	4849	98/05/14	1066/578	593475
1056	1	17505	POGO	4850	98/05/14	1066/579	593476
1057	1	17505	POGO	4851	98/05/14	1066/580	593477
1058	1	17505	POGO	4852	98/05/14	1066/581	593478
1059	1	17505	POGO	4853	98/05/14	1066/582	593479
1060	1	17505	POGO	4854	98/05/14	1066/583	593480
1061	1	17505	POGO	4855	98/05/14	1066/584	593481
1062	1	17505	POGO	4856	98/05/14	1066/585	593482



Seq	Quan	Bill No.	Claim Name		Date	Book/Page	ADL Serial No.
1063	1	17505	POGO	4949	98/05/14	1066/586	593483
1064	1	17505	POGO	4950	98/05/14	1066/587	593484
1065	1	17505	POGO	4951	98/05/14	1066/588	593485
1066	1	17505	POGO	4952	98/05/14	1066/589	593486
1067	1	17505	POGO	4953	98/05/14	1066/590	593487
1068	1	17505	POGO	4954	98/05/14	1066/591	593488
1069	1	17505	POGO	4955	98/05/14	1066/592	593489
1070	1	17505	POGO	4956	98/05/14	1066/593	593490
1071	1	17505	POGO	5049	98/05/14	1066/594	593491
1072	1	17505	POGO	5050	98/05/14	1066/595	593492
1073	1	17505	POGO	5051	98/05/14	1066/596	593493
1074	1	17505	POGO	5052	98/05/14	1066/597	593494
1075	1	17505	POGO	5053	98/05/14	1066/598	593495
1076	1	17505	POGO	5054	98/05/14	1066/599	593496
1077	1	17505	POGO	5055	98/05/14	1066/600	593497
1078	1	17505	POGO	5056	98/05/14	1066/601	593498
1079	1	17505	POGO	569	99/02/18	1128/518-519	597692
1080	1	17505	POGO	570	99/02/18	1128/520	597693
1081	1	17505	POGO	571	99/02/18	1128/521	597694
1082	1	17505	POGO	572	99/02/18	1128/522	597695
1083	1	17505	POGO	573	99/02/18	1128/523	597696
1084	1	17505	POGO	574	99/02/18	1128/524	597697
1085	1	17505	POGO	575	99/02/18	1128/525	597698
1086	1	17505	POGO	576	99/02/18	1128/526	597699
1087	1	17505	POGO	577	99/02/18	1128/527	597700
1088	1	17505	POGO	578	99/02/18	1128/528	597701
1089	1	17505	POGO	579	99/02/18	1128/529	597702
1090	1	17505	POGO	580	99/02/18	1128/530	597703
1091	1	17505	POGO	581	99/02/18	1128/531	597704
1092	1	17505	POGO	581A	99/02/18	1128/532	597705
1093	1	17505	POGO	669	99/02/19	1128/533	597706
1094	1	17505	POGO	670	99/02/19	1128/534	597707
1095	1	17505	POGO	671	99/02/19	1128/535	597708
1096	1	17505	POGO	672	99/02/19	1128/536	597709
1097	1	17505	POGO	673	99/02/19	1128/537	597710
1098	1	17505	POGO	674	99/02/19	1128/538	597711
1099	1	17505	POGO	675	99/02/19	1128/539	597712
1100	1	17505	POGO	676	99/02/19	1128/540	597713
1101	1	17505	POGO	677	99/02/19	1128/541	597714
1102	1	17505	POGO	678	99/02/19	1128/542	597715
1103	1	17505	POGO	679	99/02/19	1128/543	597716
1104	1	17505	POGO	680	99/02/19	1128/544	597717
1105	1	17505	POGO	681	99/02/19	1128/545	597718
1106	1	17505	POGO	681A	99/02/19	1128/546	597719
1107	1	17505	POGO	769	99/02/19	1128/547	597720
1108	1	17505	POGO	770	99/02/19	1128/548	597721
1109	1	17505	POGO	771	99/02/19	1128/549	597722
1110	1	17505	POGO	772	99/02/19	1128/550	597723
1111	1	17505	POGO	773	99/02/19	1128/551	597724
1112	1	17505	POGO	774	99/02/19	1128/552	597725
1113	1	17505	POGO	775	99/02/19	1128/553	597726
1114	1	17505	POGO	776	99/02/19	1128/554	597727
1115	1	17505	POGO	777	99/02/19	1128/555	597728
1116	1	17505	POGO	778	99/02/19	1128/556	597729
1117	1	17505	POGO	779	99/02/19	1128/557	597730
1118	1	17505	POGO	780	99/02/19	1128/558	597731



Seq	Quan	Bill No.	Claim Name		Date	Book/Page	ADL Serial No.
1119	1	17505	POGO	781	99/02/19	1128/559	597732
1120	1	17505	POGO	781A	99/02/19	1128/560	597733
1121	1	17505	POGO	782	99/02/19	1128/561	597734
1122	1	17505	POGO	783	99/02/19	1128/562	597735
1123	1	17505	POGO	869	99/02/19	1128/563	597736
1124	1	17505	POGO	870	99/02/19	1128/564	597737
1125	1	17505	POGO	84	99/09/05	1164/423-424	601263
1126	1	17505	POGO	85	99/09/05	1164/425	601264
1127	1	17505	POGO	184	99/09/05	1164/426	601265
1128	1	17505	POGO	185	99/09/05	1164/427	601266
1129	1	17505	POGO	284	99/09/05	1164/428	601267
1130	1	17505	POGO	285	99/09/05	1164/429	601268
1131	1	17505	POGO	384	99/09/05	1164/430	601269
1132	1	17505	POGO	385	99/09/05	1164/431	601270
1133	1	17505	POGO	484	99/09/05	1164/432	601271
1134	1	17505	POGO	485	99/09/05	1164/433	601272
1135	1	17505	POGO	584	99/09/04	1164/434	601273
1136	1	17505	POGO	585	99/09/04	1164/435	601274
1137	1	17505	POGO	4084	99/09/04	1164/436	601275
1138	1	17505	POGO	4085	99/09/04	1164/437	601276
1139	1	17505	POGO	4184	99/09/04	1164/438	601277
1140	1	17505	POGO	4185	99/09/04	1164/439	601278
1141	1	17505	POGO	4284	99/09/04	1164/440	601279
1142	1	17505	POGO	4285	99/09/04	1164/441	601280
1143	1	17505	POGO	4384	99/09/04	1164/442	601281
1144	1	17505	POGO	4385	99/09/04	1164/443	601282
1145	1	17505	POGO	4484	99/09/05	1164/444	601283
1146	1	17505	POGO	4485	99/09/05	1164/445	601284
1147	1	17505	POGO	4584	99/09/05	1164/446	601285
1148	1	17505	POGO	4585	99/09/05	1164/447	601286
1149	1	17505	POGO	4684	99/09/05	1164/448	601287
1150	1	17505	POGO	4685	99/09/05	1164/449	601288
1151	1	17505	POGO	4784	99/09/05	1164/450	601289
1152	1	17505	POGO	4785	99/09/05	1164/451	601290
1153	1	17505	POGO	4884	99/09/05	1164/452	601291
1154	1	17505	POGO	4885	99/09/05	1164/453	601292
1155	1	17505	POGO	4984	99/09/05	1164/454	601293
1156	1	17505	POGO	4985	99/09/05	1164/455	601294
1157	1	17505	POGO	5084	99/09/05	1164/456	601295
1158	1	17505	POGO	5085	99/09/05	1164/457	601296
1159	1	17505	POGO	1940	99/09/01	1164/349-350	601297
1160	1	17505	POGO	1941	99/09/01	1164/351	601298
1161	1	17505	POGO	1942	99/09/01	1164/352	601299
1162	1	17505	POGO	1943	99/09/01	1164/353	601300
1163	1	17505	POGO	1944	99/09/01	1164/354	601301
1164	1	17505	POGO	1945	99/09/01	1164/355	601302
1165	1	17505	POGO	1946	99/09/01	1164/356	601303
1166	1	17505	POGO	1947	99/09/01	1164/357	601304
1167	1	17505	POGO	1948	99/09/01	1164/358	601305
1168	1	17505	POGO	1949	99/09/01	1164/359	601306
1169	1	17505	POGO	1950	99/09/02	1164/360	601307
1170	1	17505	POGO	1951	99/09/02	1164/361	601308
1171	1	17505	POGO	1952	99/09/02	1164/362	601309
1172	1	17505	POGO	1953	99/09/02	1164/363	601310
1173	1	17505	POGO	1954	99/09/02	1164/364	601311
1174	1	17505	POGO	1955	99/09/02	1164/365	601312



Seq	Quan	Bill No.	Claim Name		Date	Book/Page	ADL Serial No.
1175	1	17505	POGO	1956	99/09/02	1164/366	601313
1176	1	17505	POGO	1957	99/09/02	1164/367	601314
1177	1	17505	POGO	2040	99/09/01	1164/368	601315
1178	1	17505	POGO	2041	99/09/01	1164/369	601316
1179	1	17505	POGO	2042	99/09/01	1164/370	601317
1180	1	17505	POGO	2043	99/09/01	1164/371	601318
1181	1	17505	POGO	2044	99/09/01	1164/372	601319
1182	1	17505	POGO	2045	99/09/01	1164/373	601320
1183	1	17505	POGO	2046	99/09/01	1164/374	601321
1184	1	17505	POGO	2047	99/09/01	1164/375	601322
1185	1	17505	POGO	2048	99/09/01	1164/376	601323
1186	1	17505	POGO	2049	99/09/01	1164/377	601324
1187	1	17505	POGO	2050	99/09/01	1164/378	601325
1188	1	17505	POGO	2051	99/09/01	1164/379	601326
1189	1	17505	POGO	2052	99/09/01	1164/380	601327
1190	1	17505	POGO	2053	99/09/01	1164/381	601328
1191	1	17505	POGO	2054	99/09/03	1164/382	601329
1192	1	17505	POGO	2055	99/09/03	1164/383	601330
1193	1	17505	POGO	2056	99/09/03	1164/384	601331
1194	1	17505	POGO	2057	99/09/03	1164/385	601332
1195	1	17505	POGO	3473	99/09/03	1164/386-387	601333
1196	1	17505	POGO	3474	99/09/03	1164/388	601334
1197	1	17505	POGO	3475	99/09/03	1164/389	601335
1198	1	17505	POGO	3476	99/09/03	1164/390	601336
1199	1	17505	POGO	3477	99/09/03	1164/391	601337
1200	1	17505	POGO	3478	99/09/04	1164/392	601338
1201	1	17505	POGO	3479	99/09/04	1164/393	601339
1202	1	17505	POGO	3480	99/09/04	1164/394	601340
1203	1	17505	POGO	3481	99/09/05	1164/395	601341
1204	1	17505	POGO	3573	99/09/03	1164/396	601342
1205	1	17505	POGO	3574	99/09/03	1164/397	601343
1206	1	17505	POGO	3575	99/09/03	1164/398	601344
1207	1	17505	POGO	3576	99/09/03	1164/399	601345
1208	1	17505	POGO	3577	99/09/03	1164/400	601346
1209	1	17505	POGO	3578	99/09/04	1164/401	601347
1210	1	17505	POGO	3579	99/09/04	1164/402	601348
1211	1	17505	POGO	3580	99/09/04	1164/403	601349
1212	1	17505	POGO	3581	99/09/05	1164/404	601350
1213	1	17505	POGO	3673	99/09/03	1164/405	601351
1214	1	17505	POGO	3674	99/09/03	1164/406	601352
1215	1	17505	POGO	3675	99/09/03	1164/407	601353
1216	1	17505	POGO	3676	99/09/03	1164/408	601354
1217	1	17505	POGO	3677	99/09/03	1164/409	601355
1218	1	17505	POGO	3678	99/09/04	1164/410	601356
1219	1	17505	POGO	3679	99/09/04	1164/411	601357
1220	1	17505	POGO	3680	99/09/04	1164/412	601358
1221	1	17505	POGO	3681	99/09/05	1164/413	601359
1222	1	17505	POGO	3773	99/09/03	1164/414	601360
1223	1	17505	POGO	3774	99/09/03	1164/415	601361
1224	1	17505	POGO	3775	99/09/03	1164/416	601362
1225	1	17505	POGO	3776	99/09/03	1164/417	601363
1226	1	17505	POGO	3777	99/09/03	1164/418	601364
1227	1	17505	POGO	3778	99/09/04	1164/419	601365
1228	1	17505	POGO	3779	99/09/04	1164/420	601366
1229	1	17505	POGO	3780	99/09/05	1164/421	601367
1230	1	17505	POGO	3781	99/09/05	1164/422	601368



Seq	Quan	Bill No.	Claim Name		Date	Book/Page	ADL Serial No.
1231	1	17505	POGO	6000	10/08/10	N/A	614991
1232	1	17505	POGO	6001	10/08/10	N/A	614992
1233	1	17505	POGO	6002	10/08/10	N/A	614993
1234	1	17505	POGO	6003	10/08/10	N/A	614994
1235	1	17505	POGO	6004	10/08/10	N/A	614995
1236	1	17505	POGO	6005	10/08/10	N/A	614996
1237	1	17505	POGO	6006	10/08/10	N/A	614997
1238	1	17505	POGO	6007	10/08/10	N/A	614998
1239	1	17505	POGO	6008	10/08/10	N/A	614999
1240	1	17505	POGO	6009	10/08/10	N/A	615000
1241	1	17505	POGO	6010	10/08/10	N/A	615001
1242	1	17505	POGO	6011	10/08/10	N/A	615002
1243	1	17505	POGO	6012	10/08/10	N/A	615003
1244	1	17505	POGO	6013	10/08/10	N/A	615004
1245	1	17505	POGO	6014	10/08/10	N/A	615005
1246	1	17505	POGO	6015	10/08/10	N/A	615006
1247	1	17505	POGO	6016	10/08/10	N/A	615007
1248	1	17505	POGO	6017	10/08/10	N/A	615008
1249	1	17505	POGO	6018	10/08/10	N/A	615009
1250	1	17505	POGO	6019	10/08/10	N/A	615010
1251	1	17505	POGO	6020	10/08/10	N/A	615011
1252	1	17505	POGO	6021	10/08/10	N/A	615012
1253	1	17505	POGO	6022	10/08/10	N/A	615013
1254	1	17505	POGO	6023	10/08/10	N/A	615014
1255	1	17505	POGO	6024	10/08/10	N/A	615015
1256	1	17505	POGO	6025	10/08/10	N/A	615016
1257	1	17505	POGO	6026	10/08/10	N/A	615017
1258	1	17505	POGO	6027	10/08/10	N/A	615018
1259	1	17505	POGO	6028	10/08/10	N/A	615019

Appendix B - FIGURES

- Figure 1.3: Pogo Mine As-built
- Figure 1.3a: 1525 Portal Area As-built
- Figure 1.3b: Airstrip Area As-build
- Figure 1.3c: Mill and Camp Bench Area As-built
- Figure 1.3d: RTP and Drystack Area As-built
- Figure 4.1: Pogo Access Road and Transmission Line
- Figure 6.1: Process Flow Diagram
- Figure 6.2: As-built Mill Plant
- Figure 7.1a: Drystack Storage Facilities Year 2010
- Figure 7.1b: Drystack Storage Facilities Year 2011
- Figure 7.1c: Drystack Storage Facilities Year 2012
- Figure 7.1d: Drystack Storage Facilities Year 2013
- Figure 7.1e: Drystack Storage Facilities Year 2014
- Figure 7.1f: Drystack Storage Facilities Year 2015
- Figure 7.1g: Drystack Storage Facilities Year 2016
- Figure 7.1h: Drystack Storage Facilities Year 2017
- Figure 8.1: Conceptual Water Management Flows
- Figure 8.2: Process Flow Diagram with Water Use
- Figure 8.3: Water Balance 2,500 tpd Average Case
- Figure 8.4: RTP Dam As-built
- Figure 8.5: RTP Seepage Collection System
- Figure 8.6: Off-River Treatment Works
- Figure 8.7: Off-River Treatment Works Pump Lift Station & Outlet Structure

Note: The year-by-year drawings were created assuming the shells would be constructed during summer season and 93,000 – 98,000 tons of drystack would be placed annually. In June 2011, ADNR approved to construct shells year-round and it will facilitate the shell construction by placing 200,000 – 250,000 tons of drystack annually. However, the maximum heights of the shells are limited by the elevation of existing diversion ditch and won't exceed the height shown in Drawing 9.1 of DSTF C&M Plan (DSTF Plan and section (20 million tons)).

Appendix C

POGO QUALITY ASSURANCE PLAN

Appendix D

POGO MINE MONITORING PLAN

Appendix E

POGO RECLAMATION AND CLOSURE PLAN

Appendix F

POGO DSTF CONSTRUCTION AND MAINTENANCE PLAN

Appendix G

POGO RTP OPERATING AND MAINTENANCE MANUAL