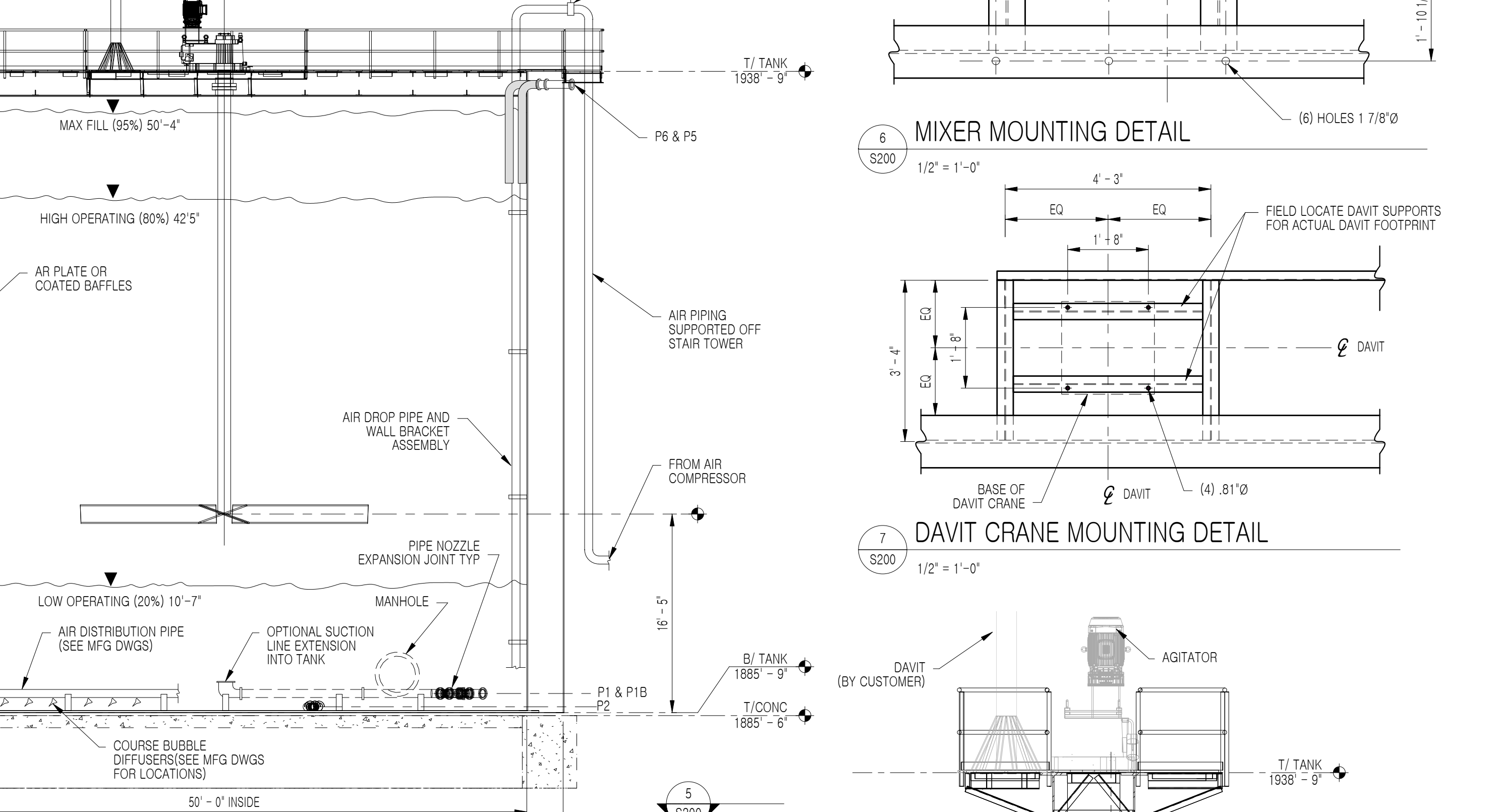
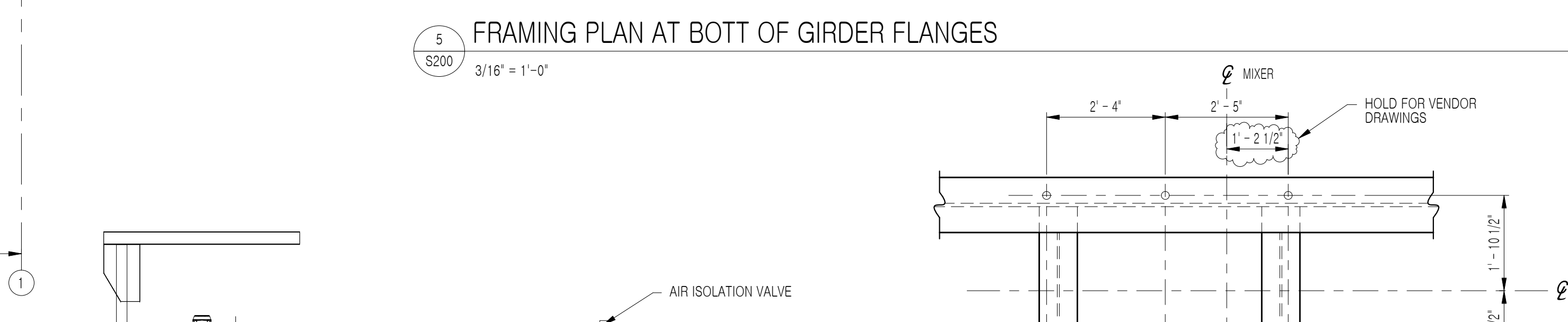
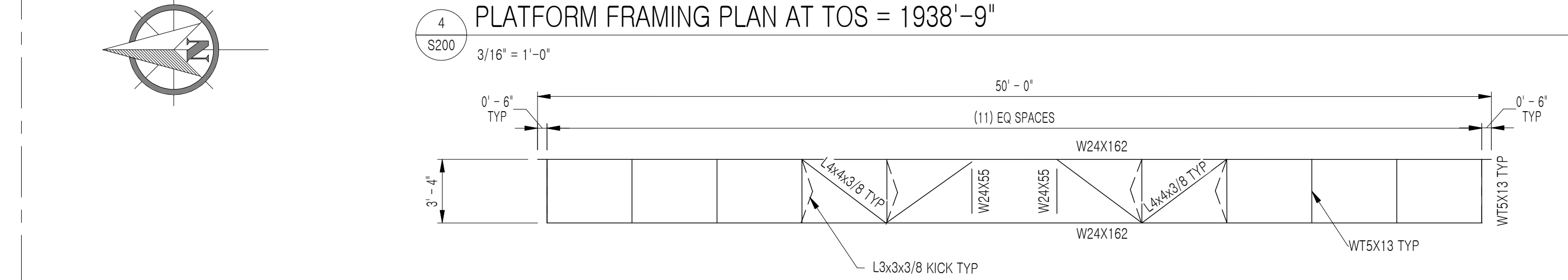
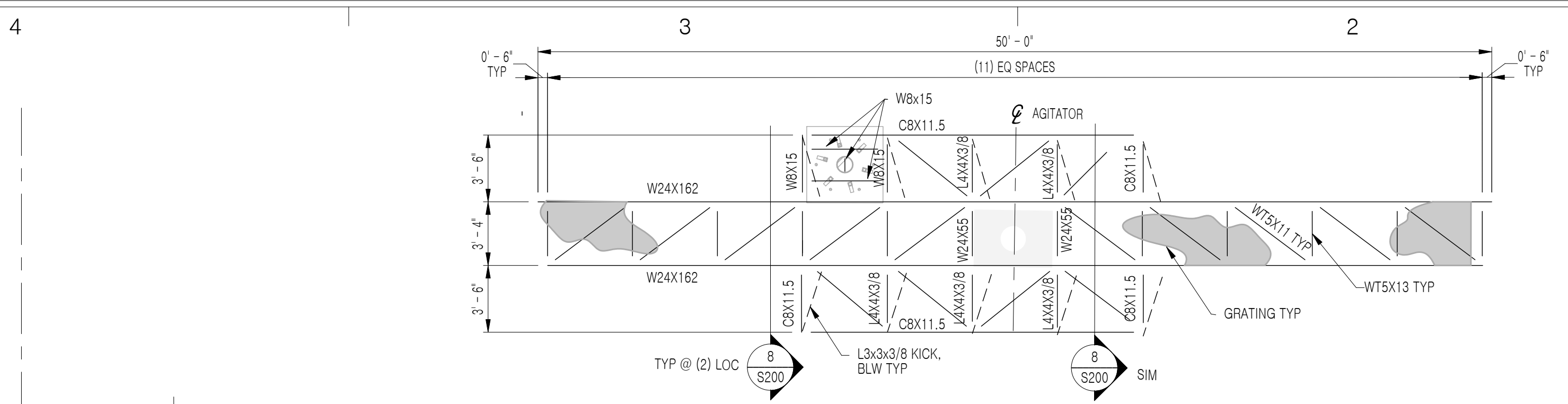


REV	DESCRIPTION	DATE	ISSUED BY
A	VERIFY AND REVIEW	12/3/13	K.NIELSON
B	CUSTOMER REVIEW	01/07/14	E. HOGGAN
C	CUSTOMER REVIEW	01/20/14	A. HIXSON
D	RELOCATED AND ROTATED TANK PER POGO COMMENTS, REMOVED LID	02/12/14	K.NIELSON



DESIGN DATA				
CONTENTS	DESCRIPTION	CIP TAILING THICKENER UNDERFLOW		SPEC GRAVITY
		OPERATING 20%-80%	MAXIMUM FILL 95% FULL	FLUID pH
MAXIMUM	WEIGHT	EMPTY: -	FLOODED: -	8.0
	TEMPERATURE	DESIGN: -40° TO 120°F	OPERATING: 55° - 65°F	CAPACITY
DESIGN CONDITIONS	PRESSURE	DESIGN: ATMOS.	OPERATING: ATMOS.	95300 ft-CUBED
	VACUUM	N/A		
MATERIALS	CONC. LOAD	N/A		
	ROOF LOAD	N/A		
THICKNESS	SHELL & HEADS	CS, A516 GRADE 70N	REINFORCEMENTS: CS, A516 GRADE 70N	SUPPORTS: CS, A36
	INTERALS	CS, A36	FLANGES: ASME B16.5	
TANK LOCATION	NOZZLES	ASTM A53	FRP DOME	BOTTOM: PER API 650
	SHELL & HEADS	PER API 650	FRP DOME	
CORR'N ALLOW	INDOORS:	-	OUTDOORS:	YES
	SHELL: 1/8"	BOTTOM/HEAD: 1/8"	ROOF/HEAD: N/A	N/A
TANK LININGS	SHELL: N/A	BOTTOM/HEAD: N/A	ROOF/HEAD: N/A	N/A
	STATIC WEIGHT:	30,000 lbs	MAX BENDING MOMENT:	30,000 lbs
AGITATOR	MAX TORQUE:	150,459 in-lbs	POWER:	60 hp
	INTERNAL FINISH	N/A		
PAINTING	SHELL - PAINT CLASS NO.	(141198-SP-S-505 CS-1)		
	ROOF / HEAD - PAINT CLASS NO.	N/A		
INSULATION	BOTTOM / HEAD - PAINT CLASS NO.	N/A		
	SHELL - INSULATION CLASS NO.	TBD		
ANCILLARY EQUIPMENT	ROOF / HEAD - INSULATION CLASS NO.	FRP SANDWICH PANEL		
	TRAYS	-	AGITATOR	(1)
DESIGN CODE	PACKING	-	HEATING COIL / JACKET	-
	DEMISTER	-	VORTEX BREAKER	-
EQUIPMENT No.	WEAR PLATE	-	DAVITS	(1)
	LADDER+PLAT. BRACKETS	-	HINGES CLOSURES	-
	CORR'N TEST RACK CLIPS	-	RELIEVING DEVICES	-
	GROUNDING LUGS	(4)	INSULATION SUPPORTS	(4)
	LIFTING LUGS	AS REQ'D	NAMEPLATE	AS PER API 650
	JET MIXING	-	VENT	(1)
	BAFFLES	-	-	(3)
	LEAK DETECTION LOW	3"	-	-
	LEAK DETECTION HIGH	12"	-	-

NOZZLE SCHEDULE									
NOZZLE NO.	SERVICE	SIZE	TYPE	RATING	FACING	QTY	TO NOZZLE CL OR FLANGE FACE		
							HT. FROM B/ TANK	PROJECT. FROM TANK CL TO INNER TANK	PROJECT. FROM TANK CL TO OUTER TANK
P1	PUMP SUCTION	8"	S.O.	150#	R.F.	1	1'-7"	25'-8"	28'-8"
P1B	PUMP SUCTION	8"	S.O.	150#	R.F.	1	1'-7"	25'-8"	28'-8"
P2	DRAIN	8"	S.O.	150#	R.F.	1	BY FABR.	BY FABR.	BY FABR.
P4	MANHOLE - SHELL	36"		BY FABR.		1	3'-0"	BY FABR.	N/A
P5	INLET	6"	S.O.	150#	R.F.	1	51'-6"	25'-8"	28'-8"
P6	RECIRCULATION	6"	S.O.	150#	R.F.	1	51'-6"	25'-8"	28'-8"
P7	OUTER MANHOLE - SHELL	36"		BY FABR.		1	3'-0"	NA	BY FABR.

NOTES:

1- MAX FILLING IS 120GPM AND PUMP-OUT RATE IS 325 USGPM: FLOW THROUGH TANK DRAIN NOZZLE BY TANK FABRICATOR

2- ALL PLATE MATERIAL, SHELL, ROOF AND BOTTOM SHALL MEET IMPACT REQUIREMENTS OF API STANDARD 650. IMPACT REQUIREMENTS SHALL BE WAIVED IF DESIGN STRESS IS LIMITED TO A MAXIMUM OF 30% OF CODE ALLOWABLE STRESS. STRUCTURAL SHAPES SHALL BE CHARPY IMPACT TESTED IN ACCORDANCE WITH ASTM A673 WITH FREQUENCY (P) TESTING. THE MINIMUM IMPACT ENERGY VALUES SHALL BE 15 ft-lbs AVERAGE AND 12 ft-lbs FOR ONE SPECIMEN. THE TEST TEMPERATURE SHALL BE THE MINIMUM DESIGN TEMPERATURE OF THE TANK. IMPACT REQUIREMENT SHALL BE WAIVED IF DESIGN STRESS IS LIMITED TO 30% OF CODE ALLOWABLE STRESS, UNLESS OTHERWISE NOTED ON TANK DRAWING. THE DESIGN METAL TEMPERATURE IS -40°F.

3- SURFACE PREPARATION AND PRIME COATING BY TANK FABRICATOR

1011 E Murray Holladay Rd Suite 200 Salt Lake City, UT 84117 Phone: (801) 904-2260 Fax: (801) 904-2261 www.millcreekeng.com	MILLCREEK ENGINEERING	CIP TAIL STOCK TANK AND CONTAINMENT POGO MINE SMM - POGO LLC.	ALL DESIGN INFORMATION DEPICTED ON THIS DRAWING IS PROPRIETARY AND THE SOLE PROPERTY OF MILLCREEK ENGINEERING COMPANY. THIS DESIGN/DRAWING MAY BE USED ONLY BY AUTHORIZATION BY MILLCREEK. THIS DESIGN IN PART OR IN TOTAL MAY NOT BE USED OR DUPLICATED FOR ANY OTHER PROJECT OR PURPOSE. NON PAYMENT FOR THIS DESIGN AUTOMATICALLY REVOKES THE AUTHORIZATION FOR USE.	STATUS: PRELIMINARY DATE: 01/29/2014 DRAWN: K. NIELSON REVIEWED: S. ADAMS	ENGINEERED: J. RAPICH REVIEWED: Approver	SHEET #: 1385 - S200	SCALE: AS NOTED PROJECT #: 1385 REV: D
--	------------------------------	--	---	--	---	--------------------------------	--