
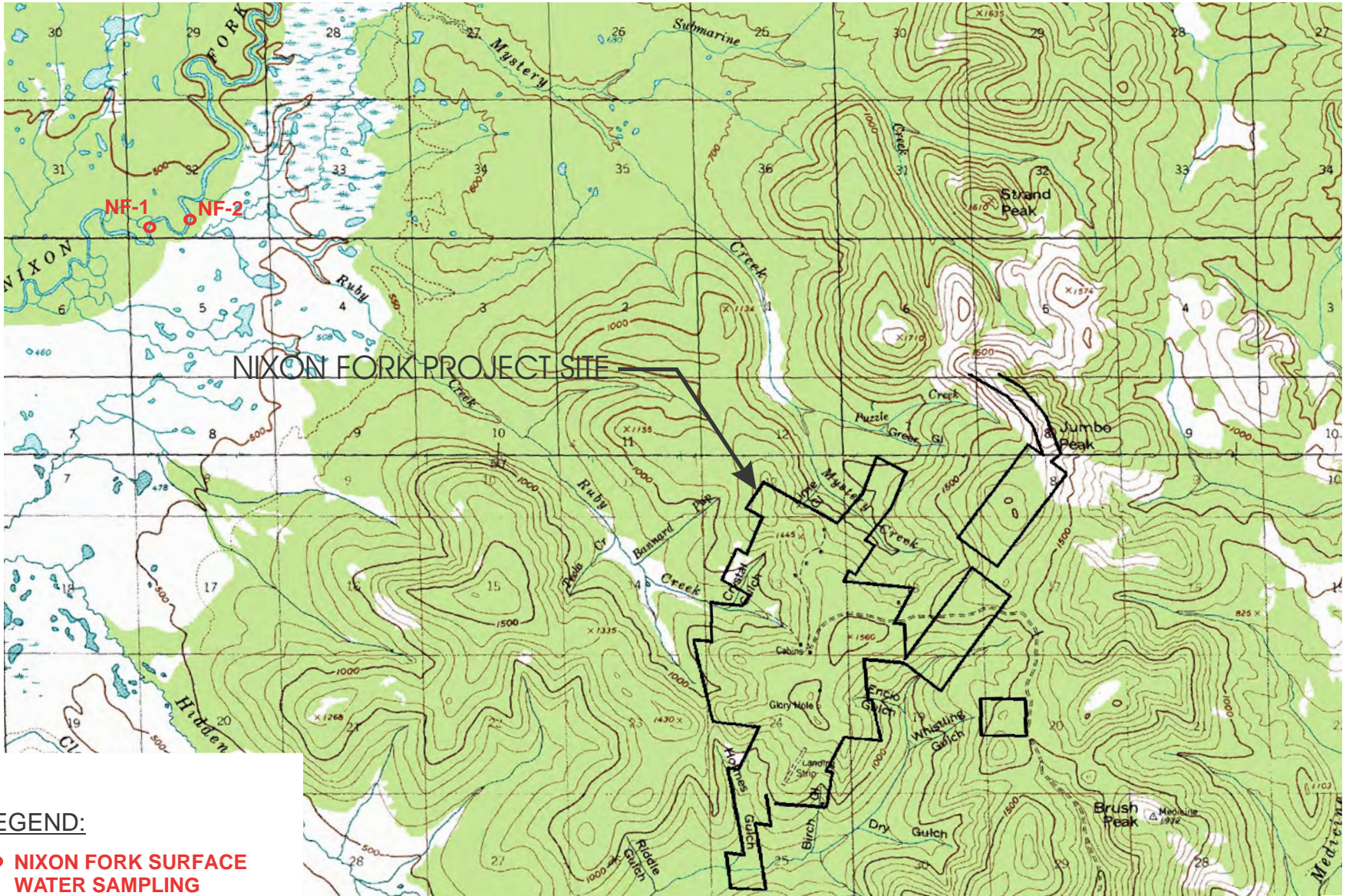


Appendix A

Figures: Vicinity Map, Project Location, Site Plan, Water Monitoring Locations



 <p>Golder Associates Anchorage, Alaska</p>	SCALE 1 IN. = 300 MI.	<p>VICINITY MAP NIXON FORK MINE NEAR MCGRATH, ALASKA</p>
	CADD CAV	
DATE 06/28/05		
CHECK JFD		
DATE 06/28/05		
FILE No. 0335632A003	REV. 0	<p>MYSTERY CRK / MONITORING PLAN / AK</p>
PROJECT No. 033-5632x002.004	FIGURE 1	



LEGEND:

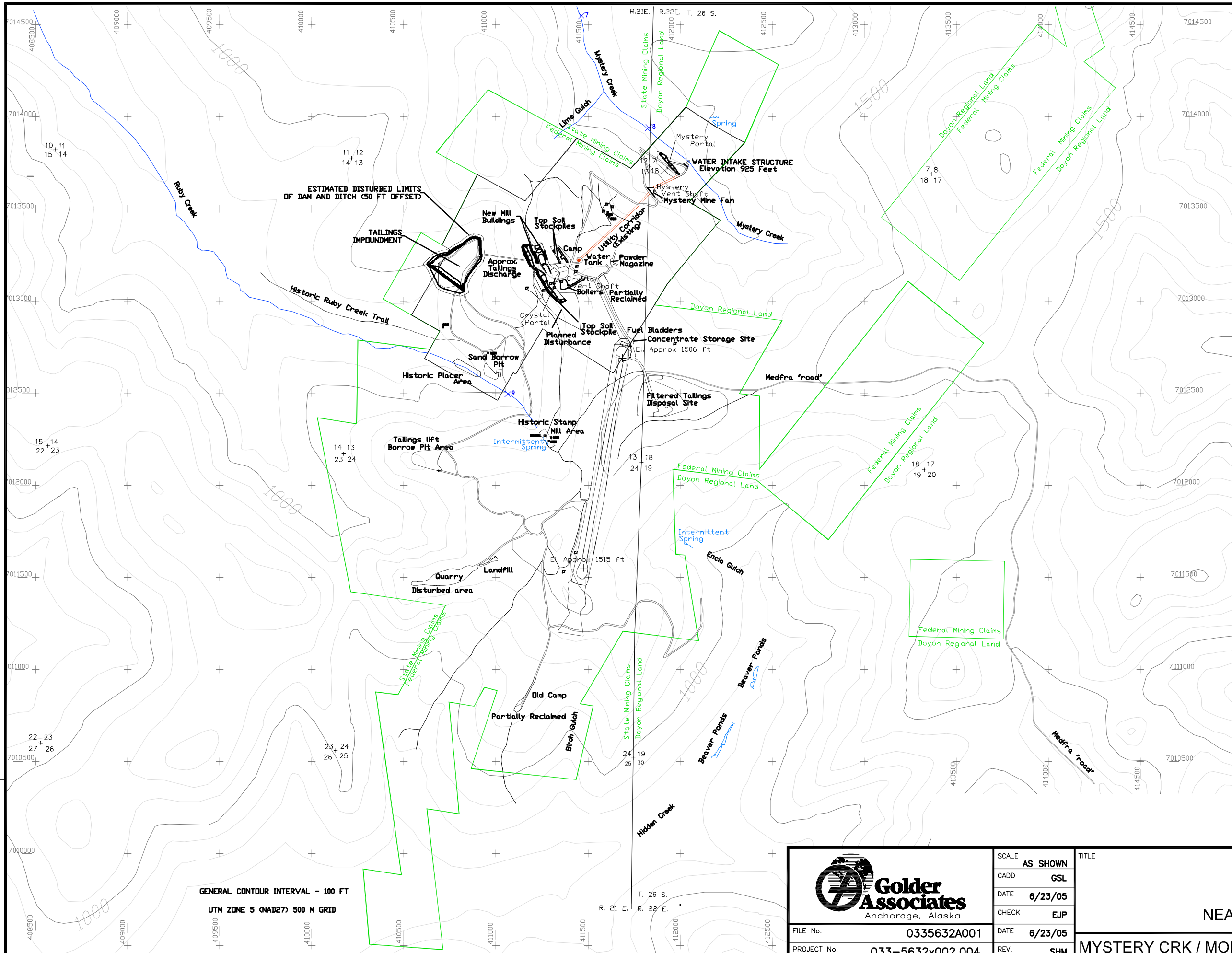
- NIXON FORK SURFACE WATER SAMPLING POINTS



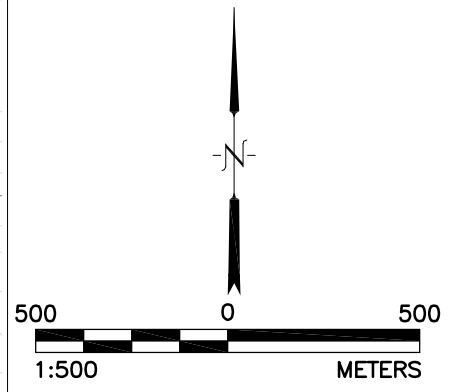
REFERENCES: USGS QUADRANGLE MAPS
MEDFRA A(4) & B(4)

 Golder Associates Anchorage, Alaska	SCALE	AS SHOWN	TITLE
	CADD	CAV	PROJECT LOCATION NIXON FORK MINE NEAR MCGRATH, ALASKA
DATE	3/30/05		
FILE No.	0335632A004	CHECK	JFD
PROJECT No.	033-5632x002.004	DATE	6/28/05
		REV.	0

PROJECT LOCATION NIXON FORK MINE NEAR MCGRATH, ALASKA	
MYSTERY CRK / MONITORING PLAN / AK	FIGURE 2



- ### LEGEND
- Former stream gauge approximate location and number from 1990 project
 - Approximate location of spring
 - Active Mine Portal
 - Active Ventilation Shaft
 - Existing Shaft
 - Existing Building
 - Existing Disturbance
 - Planned Disturbance
 - Federal Claims Surveyed
 - Federal Claims Unsurveyed



REFERENCES

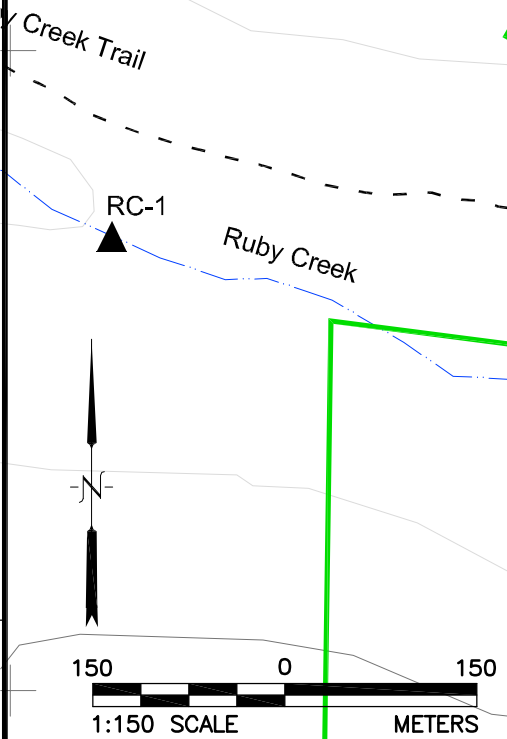
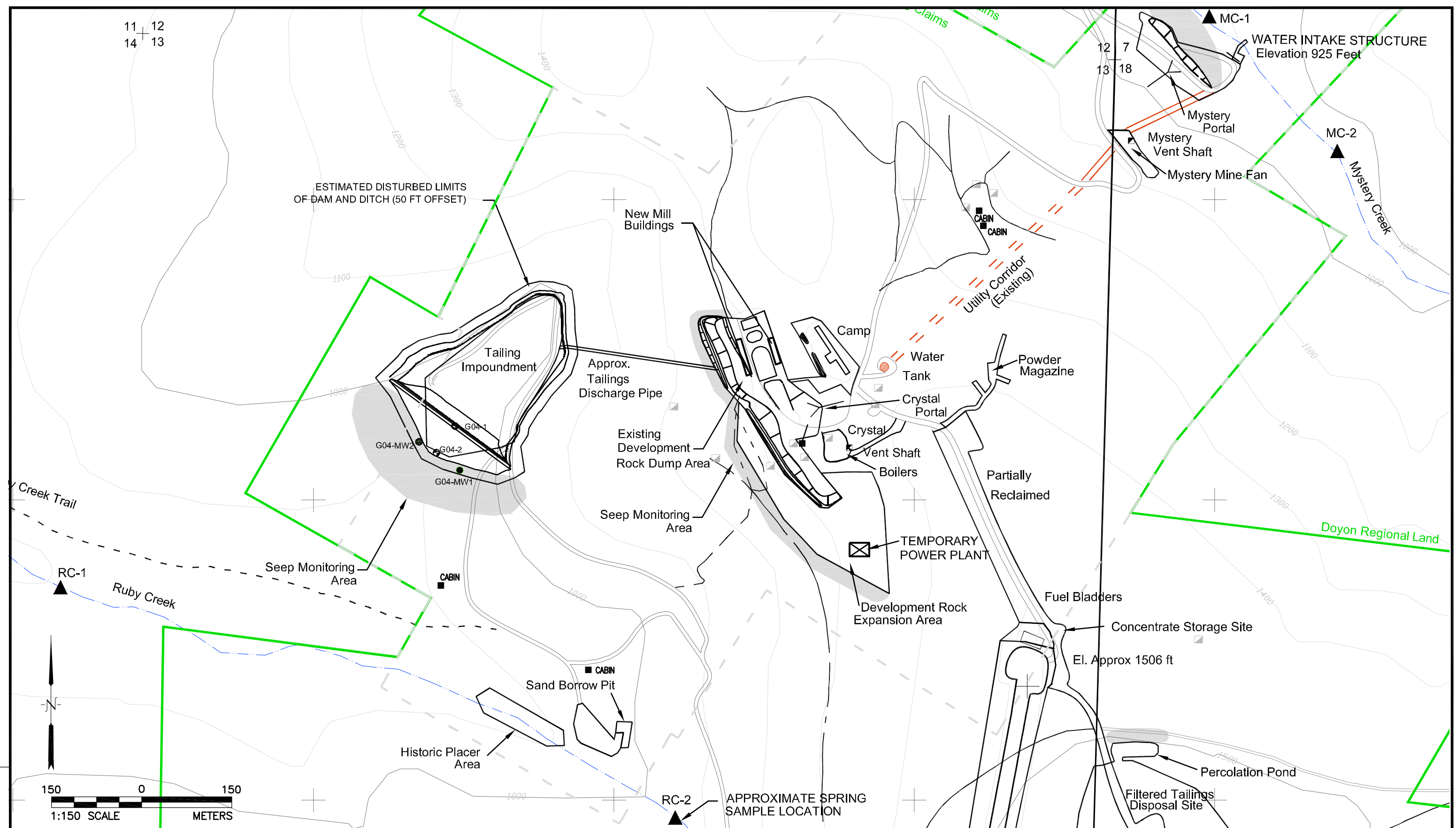
1.) FIGURE PROVIDED BY MYSTERY CREEK RESOURCES INC.

GENERAL CONTOUR INTERVAL - 100 FT
 UTM ZONE 5 (NAD27) 500 M GRID

	SCALE	AS SHOWN	
	CADD	GSL	
FILE No.	0335632A001	DATE	6/23/05
PROJECT No.	033-5632x002.004	CHECK	EJP
		DATE	6/23/05
		REV.	SHM

TITLE	
SITE PLAN NIXON FORK MINE NEAR MCGRATH, ALASKA	
FIGURE	3

11 12
14 13



LEGEND	
	G04-1 BOREHOLES WITH THERMISTERS
	G04-MW2 MONITORING WELLS
	SHAFT
	SURFACE WATER SAMPLE LOCATION
	SEEP MONITORING AREA
	GROUND SURFACE CONTOURS IN FEET
	TEMPORARY POWER PLANT LOCATION

NOTES
 1. LOCATION OF 2004 BOREHOLES AND WELLS ARE BASED ON MEASUREMENTS FROM KNOWN FEATURES AND SHOULD BE CONSIDERED APPROXIMATE.

REFERENCES
 1. BASEMAP PROVIDED BY MYSTERY CREEK RESOURCES INC.

 Golder Associates Anchorage, Alaska	SCALE AS SHOWN
	CADD ACM
	DATE 06/20/05
	CHECK EJP
FILE No. 0335632A002	DATE 6/23/05
PROJECT No. 033-5632x002.004	REV. SHM

WATER MONITORING LOCATIONS NIXON FORK MINE NEAR MCGRATH, ALASKA	
MYSTERY CRK/ MONITORING PLAN/ AK	FIGURE 4