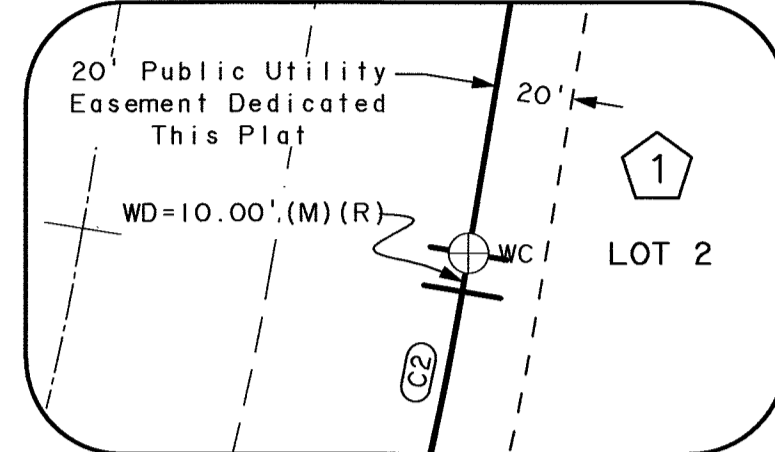
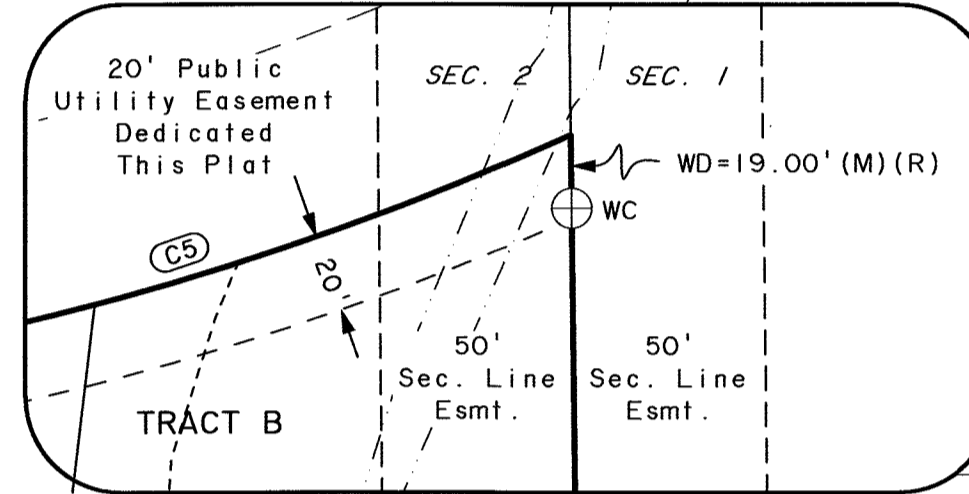


ACREAGE	
BLOCK 1	
LOT 1:	2.10
LOT 2:	2.60
LOT 3:	2.81
LOT 4:	2.43
LOT 5:	1.91
LOT 6:	1.42
LOT 7:	1.53
LOT 8:	2.31
LOT 9:	2.02
LOT 10:	1.95
LOT 11:	1.02
LOT 12:	1.00
LOT 13:	1.04
LOT 14:	1.00
BLOCK 2	
LOT 1:	1.10
LOT 2:	1.08
LOT 3:	1.70
LOT 4:	1.77
LOT 5:	1.87
LOT 6:	1.94
LOT 7:	2.59
LOT 8:	3.27
LOT 9:	2.27
LOT 10:	2.36
LOT 11:	2.12
LOT 12:	1.81
LOT 13:	1.41
LOT 14:	1.41
BLOCK 3	
LOT 1:	3.81
LOT 2:	3.63
LOT 3:	4.53
LOT 4:	2.95
LOT 5:	1.91
LOT 6:	2.12
LOT 7:	2.00
LOT 8:	2.69
LOT 9:	3.27
LOT 10:	3.72
BLOCK 4	
LOT 1:	1.17
LOT 2:	1.28
LOT 3:	1.79
LOT 4:	1.38
LOT 5:	1.66
LOT 6:	1.36
LOT 7:	2.03
LOT 8:	2.24
LOT 9:	3.36
LOT 10:	2.44
LOT 11:	1.69
TR. A:	4.07
TR. B:	32.42
ROW:	9.99
TOTAL	149.35

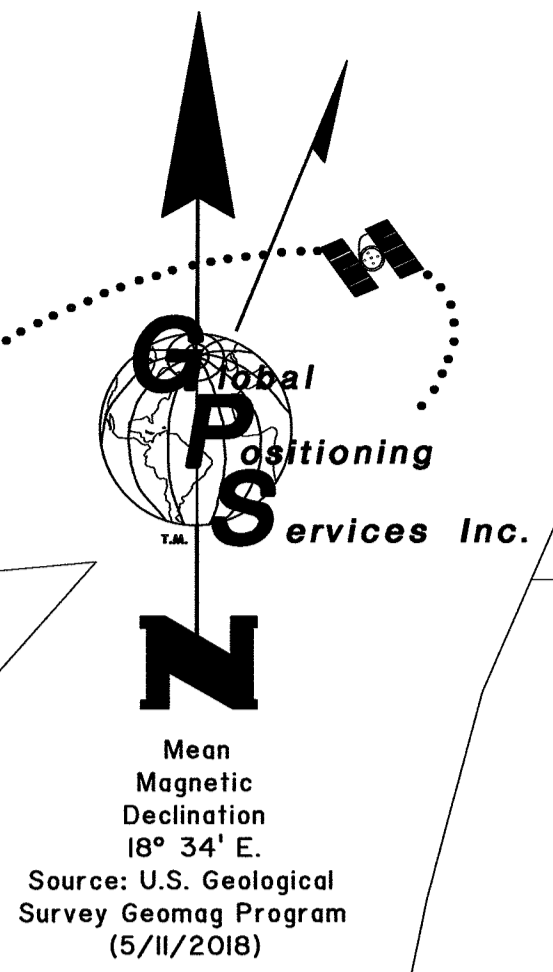
CURVE TABLE (C1-C5)				
NO.	LENGTH	RADIUS	DELTA	CHORD BEARING & DISTANCE
C1	479.89' (M)	1249.52' (R)	22°00'17" (M)	S 76°24'10" W 476.94' (M)
	479.93' (R)	1249.52' (R)	22°00'25" (R)	S 76°23'45" W 476.99' (R)
C2	1049.93' (M)	771.78' (R)	77°56'40" (M)	S 48°24'20" W 970.82' (M)
	1050.10' (R)	771.78' (R)	77°57'29" (R)	S 48°25'13" W 970.95' (R)
C3	286.46' (M)	1184.80' (R)	13°51'10" (M)	S 16°21'00" W 285.76' (M)
	286.57' (R)	1184.80' (R)	13°51'30" (R)	S 16°22'14" W 285.88' (R)
C4	1010.66' (M)	562.86' (R)	102°52'41" (M)	S 74°44'00" W 880.26' (M)
	1010.87' (R)	562.86' (R)	102°54'00" (R)	S 74°45'00" W 880.39' (R)
C5	807.58' (M)	761.79' (R)	60°44'22" (M)	N 84°09'32" W 770.29' (M)
	807.69' (R)	761.79' (R)	60°44'54" (R)	N 84°10'27" W 770.39' (R)



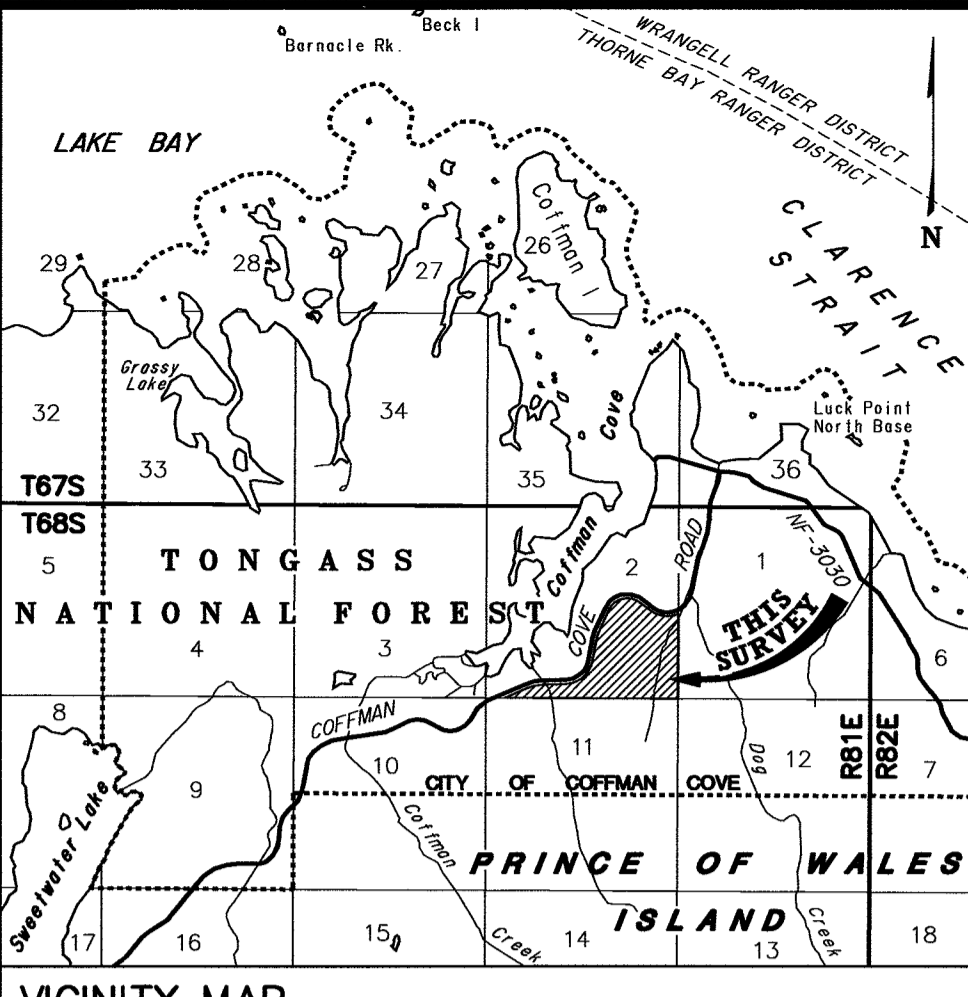
DETAIL A
SCALE: 1" = 50'



DETAIL B
SCALE: 1" = 50'



BASIS OF COORDINATES (See Note 4)
 OPUS SOLUTION
 NAD 83: Lat. 56° 00' 07.19554" N.
 Long. 132° 50' 13.17628" W.
 NAD 27: Lat. 56° 00' 08.51493" N.
 Long. 132° 50' 07.08841" W.
 NAD 83(R): Lat. 56° 00' 07.19536" N.(R)
 Long. 132° 50' 13.17696" W.(R)

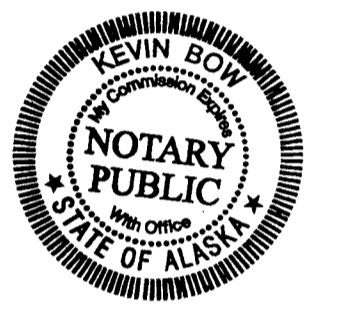


VICINITY MAP
USGS QUADS CRAIG (D-3) & PETERSBURG (A-3), 1994 SCALE 1" = 1 MILE

CERTIFICATE OF OWNERSHIP AND DEDICATION
 I, THE UNDERSIGNED, HEREBY CERTIFY THAT I AM THE DIRECTOR, DIVISION OF MINING, LAND, AND WATER AND THAT THE STATE OF ALASKA IS THE OWNER OF ASLS 2018-01, AS SHOWN HEREON. I HEREBY APPROVE THIS SURVEY AND PLAT FOR THE STATE OF ALASKA, AND DEDICATE FOR PUBLIC OR PRIVATE USE AS NOTED, ALL EASEMENTS, PUBLIC UTILITY AREAS, AND RIGHTS-OF-WAY AS SHOWN AND DESCRIBED HEREON.

6/9/2020 Gwendolyn M. Gervelis
 DATE OF DIRECTOR
 DIVISION OF MINING, LAND AND WATER

NOTARY'S ACKNOWLEDGEMENT
 SUBSCRIBED AND SWORN TO BEFORE ME THIS DAY OF **JUNE 9, 2020**.
 FOR: Gwendolyn M. Gervelis
 Kevin Bow
 NOTARY PUBLIC FOR ALASKA
 MY COMMISSION EXPIRES With Office



CERTIFICATE OF APPROVAL BY THE BOARD
 I HEREBY CERTIFY THAT THE SUBDIVISION PLAT SHOWN HEREON HAS BEEN FOUND TO COMPLY WITH THE SUBDIVISION REGULATIONS OF THE CITY OF COFFMAN COVE, ALASKA, AND THAT SAID PLAT HAS BEEN APPROVED BY THE PLATTING BOARD AND PLAT RESOLUTION NO. 20-01 DATED 6/27/2020, AND THAT THE PLAT SHOWN HEREON HAS BEEN APPROVED FOR RECORDING AT THE DISTRICT RECORDING OFFICE, KETCHIKAN, ALASKA.

DATED: 6/18/2020
 Paul Mat
 CHAIRMAN, COFFMAN COVE PLATTING AUTHORITY
 ATTEST:
 Jumbo
 CLERK, COFFMAN COVE PLATTING AUTHORITY

TAX CERTIFICATE
 THIS SUBDIVISION IS NOT SUBJECT TO TAXATION AT THE TIME OF FILING.
SCALE
 1 inch = 200 feet
 0 200 300 400 500 600 700 800 900 1000
 FEET
 0 50 100 150 200 250 300
 METERS
 1 METER = 3.2808333 U.S. SURVEY FEET, 1 U.S. ACRE = 0.4047 HECTARE

- NOTES:**
- THIS SURVEY WAS ACCOMPLISHED IN ACCORDANCE WITH A.S. 38.04.045, GSC 826 AND SSI 2018-01.
 - ALL BEARINGS SHOWN ARE TRUE BEARINGS AS ORIENTED TO THE BASIS OF BEARING AND THE DISTANCES SHOWN ARE REDUCED TO HORIZONTAL FIELD DISTANCES.
 - THE BASIS OF BEARING FOR THIS PLAT WAS DETERMINED BY HIGH PRECISION GLOBAL NAVIGATION SATELLITE SYSTEM TECHNOLOGY IN NAD 83 (2011) (EPOCH:2010.000) DATUM, USING TRIMBLE R10 AND R8 CARRIER PHASE RECEIVERS, DIFFERENTIALLY CORRECTED AND PROCESSED USING TRIMBLE BUSINESS CENTER SOFTWARE, VERSION 5.00. LOCAL PLANE BEARINGS ARE ORIENTED TO TRUE GEODETIC NORTH AT THE CORNER 5, TRACT A, ASLS 96-61 (MONUMENT RI) OF THIS SURVEY.
 - THE SHOWN FOUND NAD 83 (2011) COORDINATES ARE BASED ON AN NGS OPUS SHARED SOLUTION (EPOCH: 2010.0000) FOR MONUMENT RI. THE NGS OPUS SHARED SOLUTION DESIGNATION IS ASLS 2016-02 TR.A ASLS 96-61 ROW LS11796, THE PID IS BBG04, AND OBSERVED BY GPS INC. ON 7/15/2018, 10:20:00 AKDT. THE SHOWN RECORD COORDINATES ARE FROM ASLS 2016-02, COFFMAN LOOP SUBD. PH. I, 2016-1 KR.D, & 2016-6 PRD. THE NAD 83 VALUES WERE CONVERTED TO NAD 27 USING TRIMBLE BUSINESS CENTER, V. 5.00.
 - THE ERROR OF CLOSURE OF THIS SURVEY DOES NOT EXCEED 1:5000, AND/OR CORNER POSITIONS HAVE A RELATIVE POSITIONAL ACCURACY AT THE 95 PERCENT CONFIDENCE LEVEL OF 0.13 FEET PLUS 100 PPM.
 - ALL PARCELS OF LAND OWNED BY THE STATE OF ALASKA, LOCATED WITHIN 50.00 FEET OF, OR BISECTED BY A SURVEYED OR PROTRACTED SECTION LINE, ARE SUBJECT TO A 50-FOOT (50') EASEMENT ON EACH SIDE OF THE SECTION LINE, WHICH IS RESERVED TO THE STATE OF ALASKA FOR PUBLIC HIGHWAYS UNDER A.S. 19.10.010.
 - THERE IS A 50-FOOT WIDE BUILDING SETBACK FROM APPARENT WETLANDS.
 - TRACT A IS HEREBY RESERVED FOR PUBLIC USE AS A WILDLIFE & HABITAT PROTECTION AND COMMUNITY RECREATION CORRIDOR.
 - LEGAL ACCESS TO ALL LOTS WITHIN ASLS 2018-01, UNLESS OTHERWISE NOTED, IS VIA THE INTERIOR ROAD RIGHT-OF-WAY DEDICATED BY THIS PLAT. NO DIRECT ACCESS TO THE COFFMAN COVE ROAD RIGHT-OF-WAY IS ALLOWED.

- LEGAL ACCESS FROM THE COFFMAN COVE ROAD RIGHT-OF-WAY TO LOTS 1, 2, & 3, BLOCK 3, WILL REQUIRE DOT&PF DRIVEWAY PERMITS. SHARED DRIVEWAY ACCESS IS REQUIRED FOR SAID LOTS 2 & 3. IT IS THE RESPONSIBILITY OF THE THE FUTURE OWNERS TO OBTAIN ALL NECESSARY PERMITS.

- LEGEND:**
- GLO/BLM MONUMENT RECOVERED AS NOTED ON SHEET 4
 - PRIMARY MONUMENT SET THIS SURVEY AS NOTED ON SHEET 4
 - PRIMARY MONUMENT RECOVERED AS NOTED ON SHEET 4
 - SECONDARY MONUMENT RECOVERED AS NOTED ON SHEET 4
 - UNSURVEYED
 - SURVEYED
 - WC WITNESS CORNER
 - WD WITNESS DISTANCE
 - OHW ORDINARY HIGH WATER
 - (R) RECORD PER ASLS 2016-02
 - (C) COMPUTED
 - (M) MEASURED
 - (RI) (A) MONUMENT IDENTIFIER
 - (3) (3) BLOCK NUMBER
 - RECORD BOUNDARY LINE ELIMINATED BY THIS PLAT



SURVEYOR'S CERTIFICATE
 I HEREBY CERTIFY THAT I AM PROPERLY REGISTERED AND LICENSED TO PRACTICE LAND SURVEYING IN THE STATE OF ALASKA, THAT THIS PLAT REPRESENTS A SURVEY MADE BY ME OR UNDER MY DIRECT SUPERVISION, THAT THE MONUMENTS SHOWN HEREON ACTUALLY EXIST AS DESCRIBED, AND THAT ALL DIMENSIONS AND OTHER DETAILS ARE CORRECT.
 6/2/2020
 DATE
 JON C. GUFFEY
 REGISTERED LAND SURVEYOR NO. LS-14463

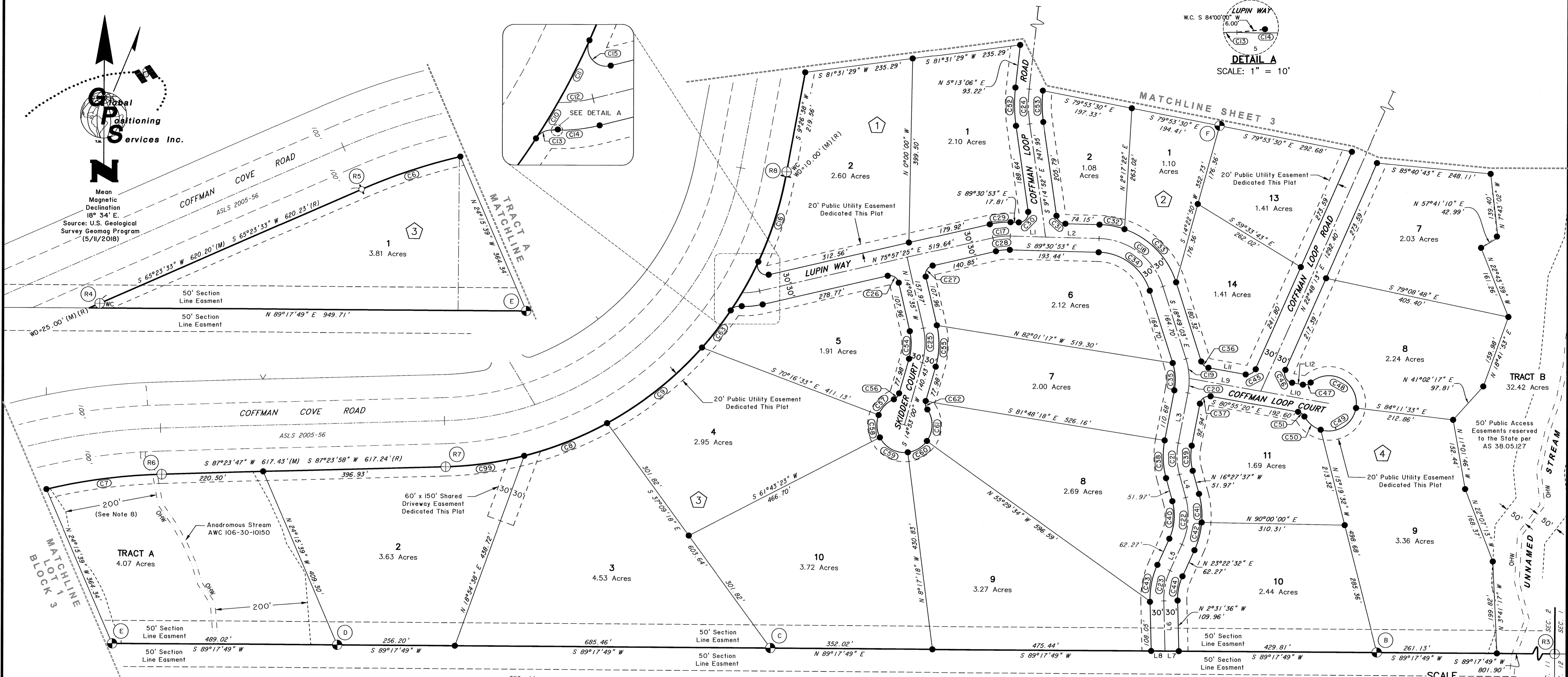
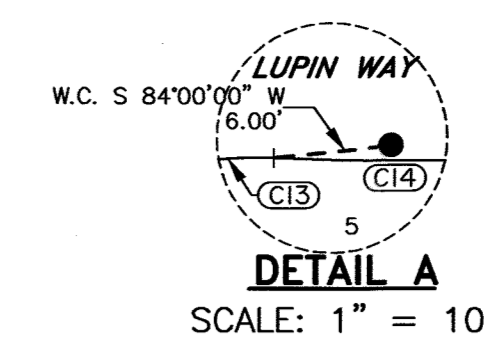
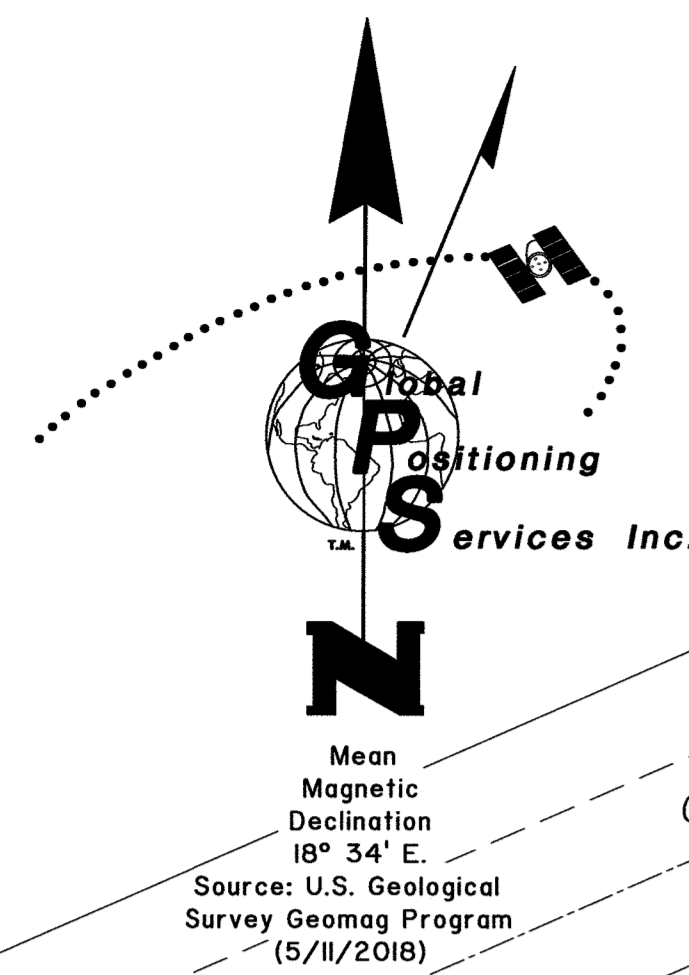
ACCEPTANCE OF DEDICATION
 THE MAYOR HEREBY ACCEPTS FOR PUBLIC USES AND FOR PUBLIC PURPOSES THE REAL PROPERTY DEDICATED TO THE PUBLIC BY THIS PLAT INCLUDING EASEMENTS, RIGHTS-OF-WAY, ALLEYS, AND ROADWAYS SHOWN ON THIS PLAT. THE ACCEPTANCE OF LANDS FOR PUBLIC USE OR PUBLIC PURPOSE DOES NOT OBLIGATE THE PUBLIC OR ANY GOVERNING BODY TO CONSTRUCT, OPERATE, OR MAINTAIN IMPROVEMENTS.

Jasmi Sundar Mayor
 MAYOR

Ketchikan Recording District PL 2020-17

Petersburg Recording District PL 2020-2

STATE OF ALASKA DEPARTMENT OF NATURAL RESOURCES DIVISION OF MINING, LAND & WATER ANCHORAGE, ALASKA	
ALASKA STATE LAND SURVEY NO. 2018-01	
COFFMAN LOOP SUBDIVISION, PHASE II	
A SUBDIVISION OF PORTIONS OF GOVERNMENT LOTS 9 & 13, AND PORTIONS OF THE SE1/4NE1/4, THE SE1/4, AND THE SE1/4SW1/4 EXCLUDING ASLS 86-163, ASLS 96-61, ASLS 2005-56 & ASLS 2016-02	
LOCATED WITHIN PARTIALLY SURVEYED SECTION 2, TOWNSHIP 68 SOUTH, RANGE 81 EAST, COPPER RIVER MERIDIAN, ALASKA	
CREATING LOTS 1-14, BLOCK 1; LOTS 1-14, BLOCK 2; LOTS 1-10, BLOCK 3; LOTS 1-11, BLOCK 4; AND TRACTS A & B CONTAINING 149.35 ACRES MORE OR LESS PETERSBURG & KETCHIKAN RECORDING DISTRICTS	
DRAWN BY: ILL/JCG	APPROVAL RECOMMENDED
DATE: 02/2020	Kevin Bow, Inc. DATE 6/8/20
SCALE: 1" = 200'	CHECKED: JCG DNR FILE NO. ASLS 20180001



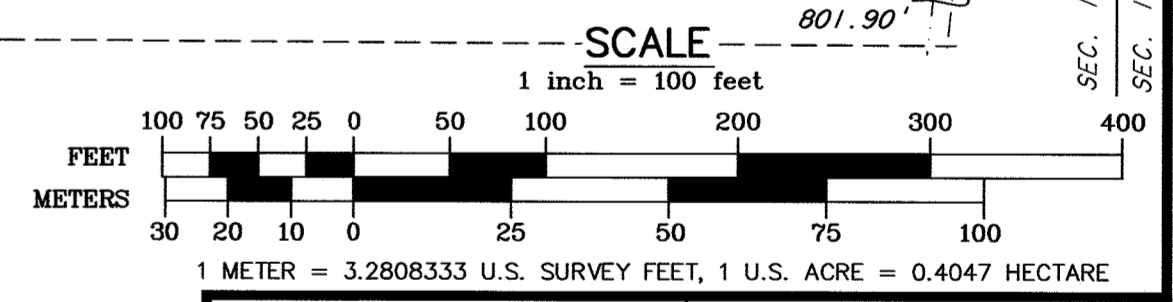
NO.	BEARING	LENGTH
L1	S 89° 30' 53" E	77.13'
L2	S 89° 30' 53" E	116.31'
L3	S 9° 47' 48" W	110.68'
L4	S 16° 27' 37" E	51.97'
L5	S 23° 22' 32" W	62.27'
L6	S 2° 31' 36" E	109.00'
L7	N 89° 17' 49" E	30.02'
L8	N 89° 17' 49" E	30.02'
L9	S 80° 55' 20" E	157.77'
L10	S 80° 55' 20" E	150.03'
L11	N 80° 55' 20" W	81.45'
L12	N 80° 55' 20" W	23.89'

NO.	LENGTH	RADIUS	DELTA	CHORD
C6	226.49'	1249.52'	10°23'08"	S 70° 35' 35" W 226.18'
C7	253.39'	1249.52'	11°37'09"	N 81° 35' 44" E 252.96'
C8	194.05'	771.78'	14°24'22"	N 67° 22' 06" E 193.54'
C9	264.51'	771.78'	19°38'12"	N 50° 20' 49" E 263.22'
C10	45.57'	771.78'	3°22'59"	N 31° 15' 47" E 45.56'
C11	75.84'	771.78'	5°37'48"	N 26° 45' 23" E 75.81'
C12	38.56'	150.01'	14°43'43"	N 83° 19' 16" E 38.46'
C13	20.78'	20.00'	59°31'34"	S 62° 43' 04" W 19.86'
C14	51.92'	180.02'	16°31'26"	S 84° 13' 08" W 51.74'
C15	44.68'	20.00'	127°59'05"	S 40° 03' 03" E 35.95'
C16	195.43'	771.78'	14°30'29"	S 16° 41' 15" W 194.91'
C17	38.04'	150.01'	14°31'42"	S 83° 13' 16" W 37.94'
C18	185.10'	150.01'	70°41'50"	N 54° 09' 58" W 173.58'
C19	43.08'	150.01'	16°27'18"	N 10° 35' 24" W 42.94'
C20	31.84'	150.01'	12°09'34"	N 3° 43' 01" E 31.78'
C21	68.75'	150.01'	26°15'25"	S 3° 19' 54" E 68.15'
C22	104.30'	150.01'	39°50'09"	N 3° 27' 27" E 102.21'
C23	67.82'	150.01'	25°54'08"	S 10° 25' 28" W 67.24'
C24	75.75'	300.03'	14°27'57"	S 2° 00' 53" E 75.55'
C25	75.74'	150.01'	28°55'35"	N 0° 25' 12" E 74.93'

NO.	LENGTH	RADIUS	DELTA	CHORD
C26	31.42'	20.00'	90°00'00"	N 59° 02' 35" W 28.29'
C27	31.42'	20.00'	90°00'00"	N 30° 57' 25" E 28.29'
C28	30.43'	120.01'	14°31'42"	N 83° 13' 16" E 30.35'
C29	45.65'	180.02'	14°31'42"	S 83° 13' 16" W 45.52'
C30	34.82'	20.00'	99°43'58"	S 40° 37' 08" W 30.58'
C31	28.02'	20.00'	80°16'02"	N 49° 22' 52" W 25.79'
C32	55.53'	180.02'	17°40'27"	N 80° 40' 39" W 55.31'
C33	166.59'	180.02'	53°01'22"	N 45° 19' 44" W 160.71'
C34	148.08'	120.01'	70°41'50"	S 54° 09' 58" E 138.87'
C35	59.94'	120.01'	28°36'52"	N 4° 30' 37" W 59.31'
C36	21.70'	20.00'	62°09'32"	N 49° 50' 34" W 20.65'
C37	31.17'	20.00'	89°16'52"	N 54° 26' 14" E 28.11'
C38	82.50'	180.02'	26°15'25"	N 3° 19' 54" W 81.78'
C39	55.00'	120.01'	26°15'25"	N 3° 19' 54" W 55.00'
C40	83.44'	120.01'	39°50'09"	S 3° 27' 27" W 81.77'
C41	62.58'	180.02'	19°55'04"	N 6° 30' 05" W 62.27'
C42	62.58'	180.02'	19°55'04"	N 13° 25' 00" E 62.27'
C43	81.38'	180.02'	25°54'08"	S 10° 25' 28" W 80.69'
C44	54.25'	120.01'	25°54'08"	N 10° 25' 28" E 53.79'
C45	26.68'	20.00'	76°25'56"	S 60° 51' 43" W 24.75'

NO.	LENGTH	RADIUS	DELTA	CHORD
C46	36.25'	20.00'	103°50'49"	N 28° 59' 56" W 31.49'
C47	17.92'	20.00'	51°19'04"	S 73° 25' 08" W 17.32'
C48	147.44'	60.01'	140°46'04"	N 61° 50' 33" W 113.06'
C49	101.90'	60.01'	97°18'09"	N 57° 12' 22" E 90.09'
C50	46.64'	60.01'	44°32'17"	S 51° 52' 24" E 45.48'
C51	17.92'	20.00'	51°19'04"	S 55° 15' 48" E 17.32'
C52	83.33'	330.03'	14°27'57"	S 2° 00' 53" E 83.10'
C53	68.18'	270.03'	14°27'57"	N 2° 00' 53" W 67.99'
C54	60.59'	120.01'	28°55'35"	N 0° 25' 12" E 59.95'
C55	90.88'	180.02'	28°55'35"	S 0° 25' 12" W 89.92'
C56	17.92'	20.00'	51°19'04"	N 40° 32' 32" E 17.32'
C57	48.68'	60.01'	46°28'37"	N 42° 57' 45" E 47.35'
C58	50.27'	60.01'	46°00'04"	S 4° 16' 35" E 48.81'
C59	72.99'	60.01'	69°41'53"	N 63° 07' 33" W 68.58'
C60	49.77'	60.01'	47°31'04"	N 58° 15' 58" E 48.35'
C61	74.30'	60.01'	70°56'30"	N 0° 57' 49" W 69.64'
C62	17.92'	20.00'	51°19'04"	N 10° 46' 32" W 17.32'
C63	102.02'	771.78'	7°34'26"	S 36° 44' 30" W 101.95'
C99	172.51'	771.78'	12°48'24"	N 80° 58' 29" E 172.15'

- LEGEND:**
- GLO/BLM MONUMENT RECOVERED AS NOTED ON SHEET 4
 - PRIMARY MONUMENT SET THIS SURVEY AS NOTED ON SHEET 4
 - PRIMARY MONUMENT RECOVERED AS NOTED ON SHEET 4
 - SECONDARY MONUMENT SET THIS SURVEY AS NOTED ON SHEET 4
 - SECONDARY MONUMENT RECOVERED AS NOTED ON SHEET 4
 - UNSURVEYED
 - SURVEYED
 - WC WITNESS CORNER
 - WD WITNESS DISTANCE
 - OHW ORDINARY HIGH WATER
 - (R) RECORD PER ASLS 2016-02
 - (M) MEASUREMENT
 - (R7) D MONUMENT IDENTIFIER
 - 3 BLOCK NUMBER
 - RECORD BOUNDARY LINE ELIMINATED BY THIS PLAT



DATE OF SURVEY: Beginning: JUL 15, 2018; Ending: OCT 16, 2019
 Jon C. Guffey, PLS
 Global Positioning Services, Inc.
 2603 Blueberry Road
 Anchorage, Alaska 99503
 COA No.: AECCI346

STATE OF ALASKA
 DEPARTMENT OF NATURAL RESOURCES
 DIVISION OF MINING, LAND & WATER
 ANCHORAGE, ALASKA

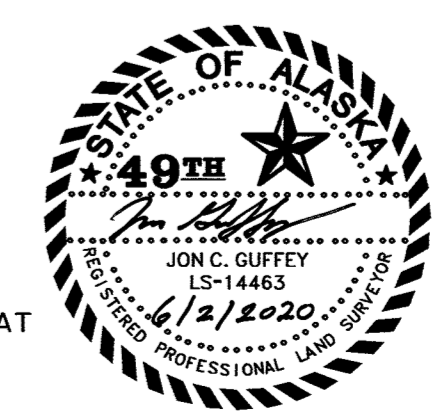
ALASKA STATE LAND SURVEY NO. 2018-01
COFFMAN LOOP SUBDIVISION, PHASE II

A SUBDIVISION OF PORTIONS OF GOVERNMENT LOTS 9 & 13, AND PORTIONS OF THE SE1/4NE1/4, THE SE1/4, AND THE SE1/4SW1/4, EXCLUDING ASLS 86-163, ASLS 96-61, ASLS 2005-56 & ASLS 2016-02

LOCATED WITHIN PARTIALLY SURVEYED SECTION 2, TOWNSHIP 68 SOUTH, RANGE 81 EAST COPPER RIVER MERIDIAN, ALASKA

CREATING LOTS 1-14, BLOCK 1; LOTS 1-14, BLOCK 2; LOTS 1-10, BLOCK 3; LOTS 1-11, BLOCK 4; AND TRACTS A & B CONTAINING 149.35 ACRES MORE OR LESS PETERSBURG & KETCHIKAN RECORDING DISTRICTS

DRAWN BY: LLL/JCG APPROVAL RECOMMENDED
 DATE: 02/2020 STATEWIDE PLATTING SUPERVISOR DATE: 6/8/20
 SCALE: 1" = 100' CHECKED: JCG DNR FILE NO. ASLS 20180001



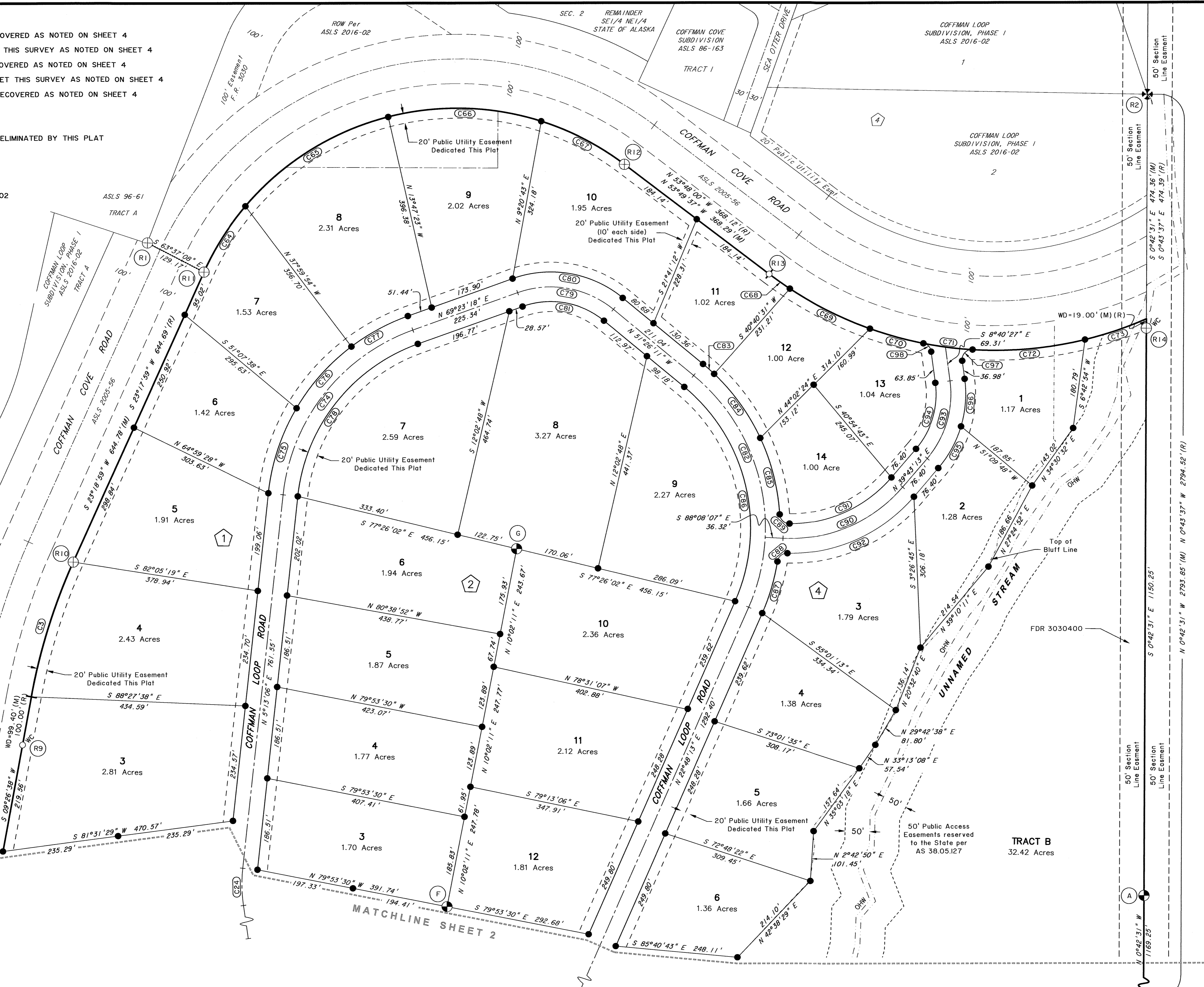
LEGEND:

- GLO/BLM MONUMENT RECOVERED AS NOTED ON SHEET 4
- PRIMARY MONUMENT SET THIS SURVEY AS NOTED ON SHEET 4
- SECONDARY MONUMENT SET THIS SURVEY AS NOTED ON SHEET 4
- SECONDARY MONUMENT RECOVERED AS NOTED ON SHEET 4
- UNSURVEYED
- SURVEYED
- RECORD BOUNDARY LINE ELIMINATED BY THIS PLAT
- WITNESS CORNER
- WITNESS DISTANCE
- ORDINARY HIGH WATER
- RECORD PER ASLS 2016-02
- MEASURED
- MONUMENT IDENTIFIER
- BLOCK NUMBER

Global Positioning Services Inc.

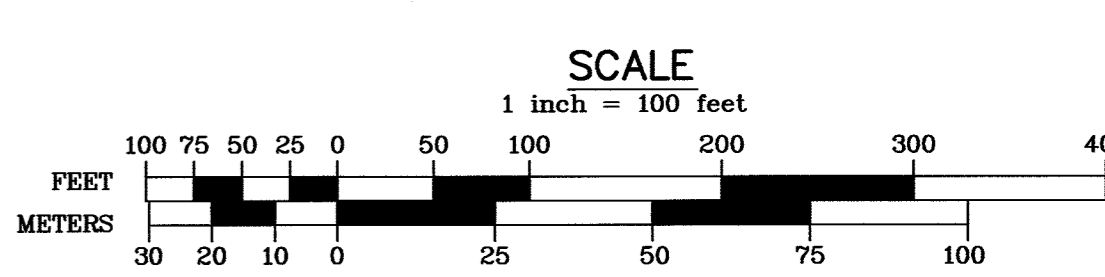
Mean Magnetic Declination 18° 34' E

Source: U.S. Geological Survey Geomag Program (5/11/2018)



CURVE TABLE (C3, C24, & C64-C98)				
NO.	LENGTH	RADIUS	DELTA	CHORD
*C3	286.46'	1184.80'	13°51'10" N 16° 21' 00" E	285.76'
C24	75.75'	300.03'	14°27'57" S 2° 00' 53" E	75.55'
C64	158.39'	562.86'	16°07'22" N 31° 21' 21" E	157.87'
C65	346.94'	562.86'	35°18'58" N 57° 04' 31" E	341.47'
C66	313.97'	562.86'	31°57'34" N 89° 17' 12" W	309.91'
C67	191.36'	562.86'	19°28'46" S 63° 34' 02" E	190.44'
C68	51.42'	761.79'	3°52'03" S 55° 43' 22" E	51.41'
C69	181.45'	761.79'	13°38'49" S 64° 28' 47" E	181.02'
C70	112.52'	761.79'	8°27'47" S 75° 32' 05" E	112.42'
C71	100.90'	761.79'	7°35'19" S 83° 37' 46" E	100.82'
C72	229.81'	761.79'	17°17'04" N 84° 01' 52" E	228.94'
C73	131.46'	761.79'	9°53'13" N 70° 24' 54" E	131.29'
C74	448.04'	400.04'	64°10'13" S 37° 18' 12" W	424.98'
C75	182.95'	430.04'	24°22'31" S 17° 24' 21" W	181.58'
C76	168.19'	430.04'	22°24'29" S 40° 47' 51" W	167.12'
C77	130.50'	430.04'	17°23'12" S 60° 41' 42" W	130.00'
C78	414.43'	370.04'	64°10'13" N 37° 18' 12" E	393.11'
C79	206.58'	200.02'	59°10'30" N 81° 01' 27" W	197.52'
C80	237.57'	230.02'	59°10'30" N 81° 01' 27" W	227.15'
C81	175.59'	170.02'	59°10'30" S 81° 01' 27" E	167.89'
C82	372.15'	400.04'	53°18'04" N 24° 47' 09" W	358.87'
C83	30.11'	430.04'	4°00'44" N 49° 25' 50" W	30.11'
C85	160.73'	430.04'	21°24'54" N 15° 15' 09" W	159.80'
C86	479.36'	370.04'	74°13'24" S 14° 18' 29" E	446.54'
C87	109.44'	430.04'	14°34'53" N 15° 30' 47" E	109.15'
C88	28.58'	20.00'	81°51'18" S 49° 08' 59" W	26.21'
C89	30.05'	20.00'	86°04'57" S 47° 35' 11" E	27.30'
C90	273.05'	300.03'	52°08'40" N 65° 47' 33" E	263.73'
C91	234.00'	270.03'	49°39'08" N 64° 32' 47" E	226.75'
C92	290.06'	330.03'	50°21'26" N 64° 53' 55" E	280.82'
C93	168.94'	200.02'	48°23'40" N 15° 31' 23" E	163.97'
C94	143.60'	170.02'	48°23'40" N 15° 31' 23" E	139.37'
C95	97.14'	230.02'	24°11'50" N 27° 37' 18" E	96.42'
C96	97.14'	230.02'	24°11'50" N 3° 25' 28" E	96.42'
C97	35.28'	20.00'	101°03'55" S 41° 51' 30" W	30.88'
C98	24.82'	20.00'	71°05'32" N 44° 13' 13" W	23.26'

* SEE SHEET 1 FOR C3 RECORD INFORMATION



DATE OF SURVEY: JUL 15, 2018
 Beginning: JUL 15, 2018
 Ending: OCT 16, 2019

Jon C. Guffey, PLS
 Global Positioning Services, Inc.
 2603 Blueberry Road
 Anchorage, Alaska 99503
 COA No.: AECC1346

STATE OF ALASKA
 DEPARTMENT OF NATURAL RESOURCES
 DIVISION OF MINING, LAND & WATER
 ANCHORAGE, ALASKA

ALASKA STATE LAND SURVEY NO. 2018-01
COFFMAN LOOP SUBDIVISION, PHASE II

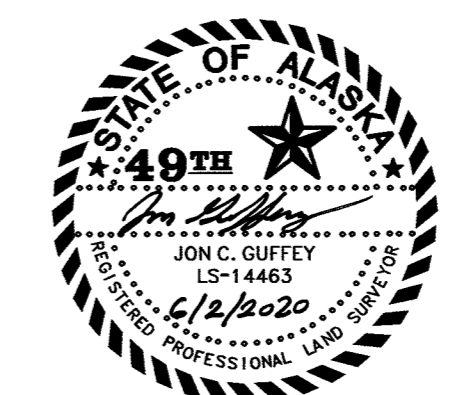
A SUBDIVISION OF PORTIONS OF GOVERNMENT LOTS 9 & 13, AND PORTIONS OF THE SE1/4, NE1/4, AND THE SE1/4SW1/4 EXCLUDING ASLS 86-163, ASLS 96-61, ASLS 2005-56 & ASLS 2016-02

LOCATED WITHIN PARTIALLY SURVEYED SECTION 2, TOWNSHIP 68 SOUTH, RANGE 81 EAST COPPER RIVER MERIDIAN, ALASKA

CREATING LOTS 1-14, BLOCK 1; LOTS 1-14, BLOCK 2; LOTS 1-10, BLOCK 3; LOTS 1-11, BLOCK 4; AND TRACTS A & B CONTAINING 149.35 ACRES MORE OR LESS PETERSBURG & KETCHIKAN RECORDING DISTRICTS

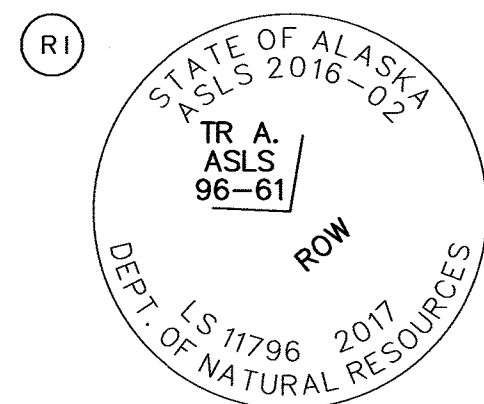
DRAWN BY: LLL/JCG APPROVAL RECOMMENDED
 DATE: 02/2020
 SCALE: 1" = 100'

APPROVAL RECOMMENDED
 STATEWIDE PLATING SUPERVISOR
 DATE: 6/8/20
 CHECKED: JCG DNR FILE NO. ASLS 20180001

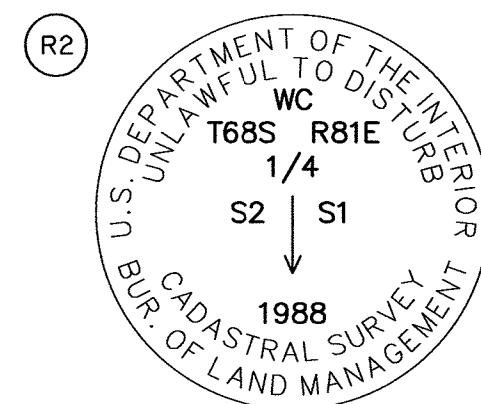


Petersburg Recording District PL 2020-2 Ketchikan Recording District PL 2020-17

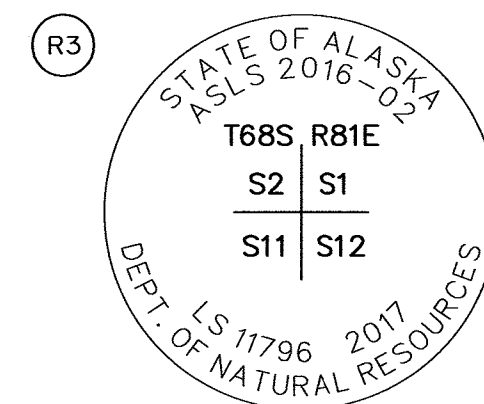
MONUMENTS RECOVERED



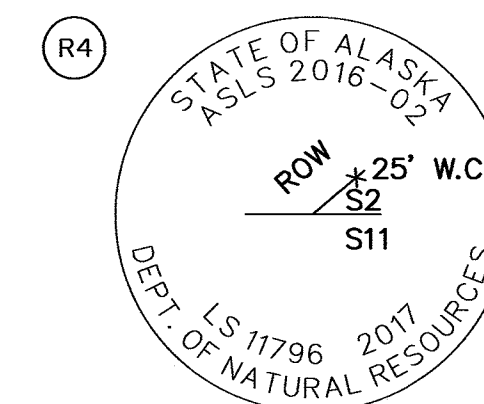
Recovered a 2-1/2 ins. diam. Aluminum Post, with a 3-1/4 ins. Aluminum Cap, marked as shown, projecting 3 ins. out of the ground.
Carsonite witness post to the West.



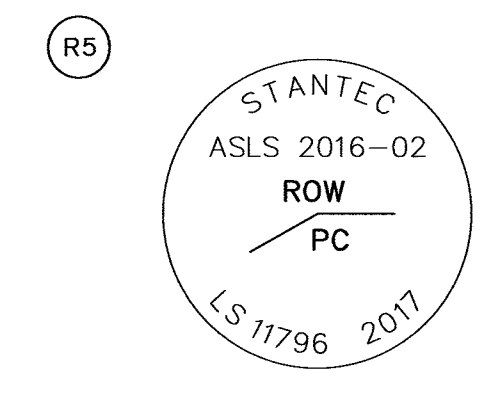
Recovered a 2-1/2 ins. diam. Aluminum Post, with a 3-1/4 ins. Aluminum Cap, marked as shown, projecting 2 ins. out of the ground, from which a
BT 1 12" Hemlock Bears N. 20° E., 10.0 ft. (N. 20° E., 10.0 ft.)
BT 2 12" Hemlock Bears S. 80° W., 5.0 ft. (S. 80° W., 5.0 ft.)
Carsonite witness post to the South.



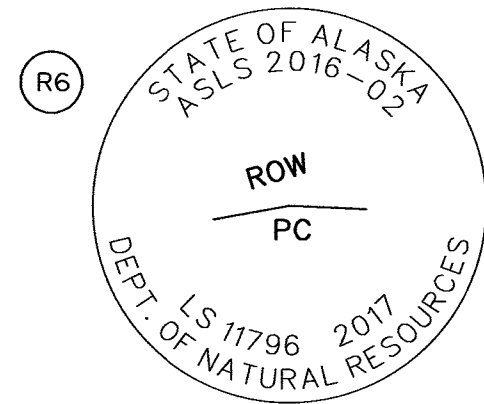
Recovered a 2-1/2 ins. diam. Aluminum Post, with a 3-1/4 ins. Aluminum Cap, marked as shown, projecting 2 ins. out of the ground, surrounded by a rock collar, from which
BT 1 13" Hemlock Bears N. 55° E., 14.5 ft. (10" Cedar Bears N 35° E., 12.3')
BT 2 10" Cedar Bears N. 49° W., 3.8 ft. (36" Cedar Bears S. 49° E., 2.9 ft.)
Carsonite witness post to the North.



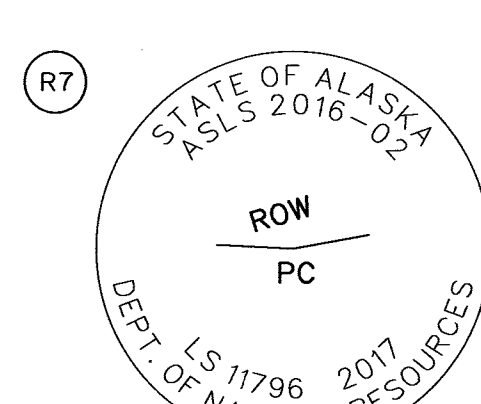
Recovered a 2-1/2 ins. diam. Aluminum Post, with a 3-1/4 ins. Aluminum Cap, marked as shown, projecting 2 ins. out of the ground, surrounded by a rock collar.
Carsonite witness post to the South.



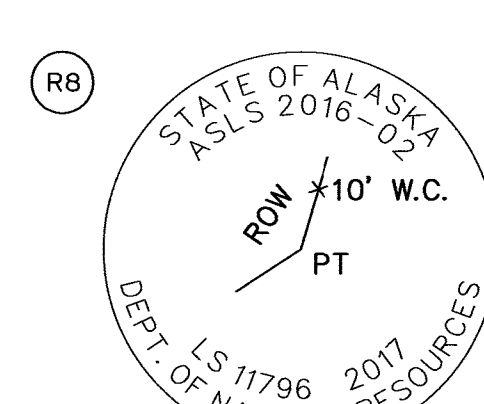
Recovered a 5/8 in. diam. Rebar, with a 2 ins. Aluminum Cap, marked as shown, projecting 4 ins. above the ground.



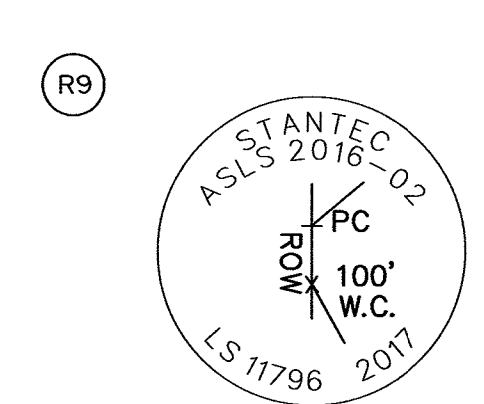
Recovered a 2-1/2 ins. diam. Aluminum Post, with a 3-1/4 ins. Aluminum Cap, marked as shown, projecting 4 ins. out of the ground, surrounded by a rock collar.
Carsonite witness post to the South.



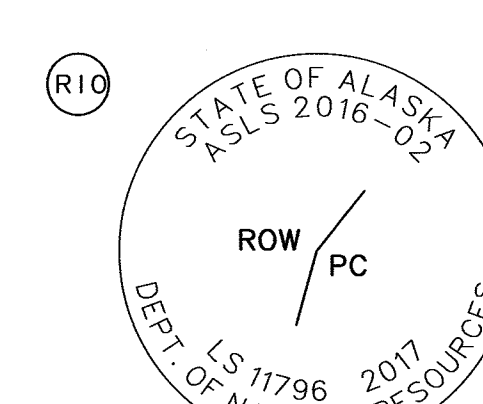
Recovered a 2-1/2 ins. diam. Aluminum Post, with a 3-1/4 ins. Aluminum Cap, marked as shown, projecting 6 ins. out of the ground, surrounded by a rock collar.
Carsonite witness post to the South.



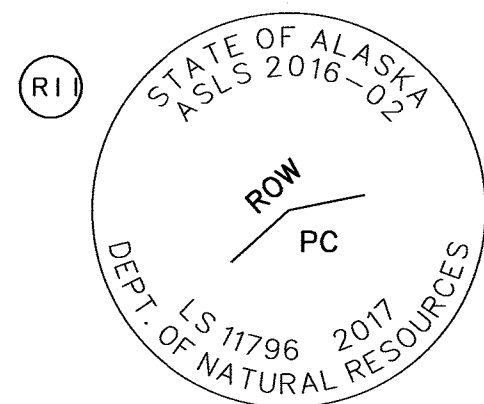
Recovered a 2-1/2 ins. diam. Aluminum Post, with a 3-1/4 ins. Aluminum Cap, marked as shown, projecting 2 ins. out of the ground, surrounded by a rock collar.
Carsonite witness post to the East.



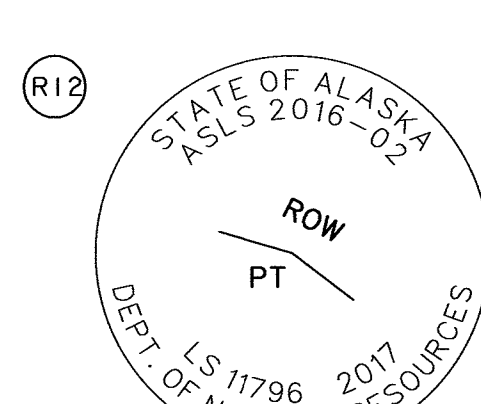
Recovered a 5/8 in. diam. Rebar, with a 2 ins. Aluminum Cap, marked as shown, projecting 2 ins. above the ground.



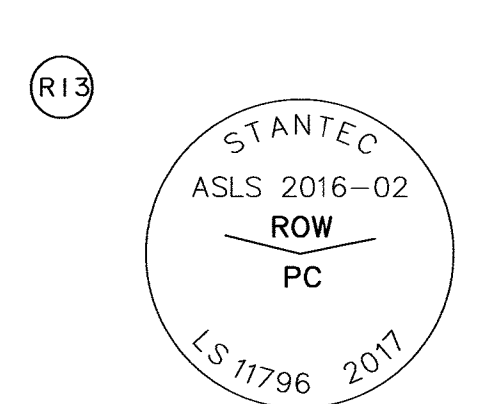
Recovered a 2-1/2 ins. diam. Aluminum Post, with a 3-1/4 ins. Aluminum Cap, marked as shown, projecting 3 ins. out of the ground, surrounded by a rock collar.



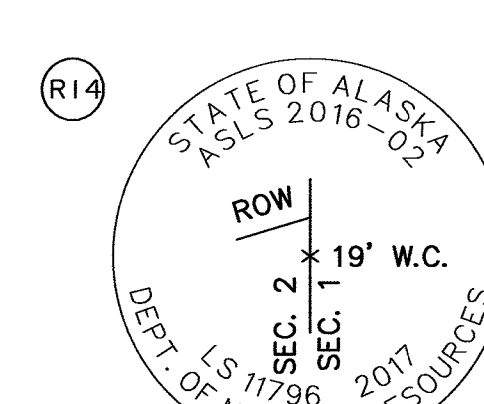
Recovered a 2-1/2 ins. diam. Aluminum Post, with a 3-1/4 ins. Aluminum Cap, marked as shown, projecting 1 in. out of the ground, surrounded by a rock collar.
Carsonite witness post to the South.



Recovered a 2-1/2 ins. diam. Aluminum Post, with a 3-1/4 ins. Aluminum Cap, marked as shown, projecting 2 ins. out of the ground, surrounded by a rock collar.
Carsonite witness post to the South.

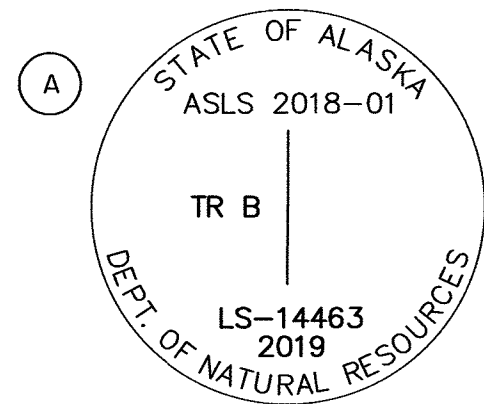


Recovered a 5/8 in. diam. Rebar, with a 2 ins. Aluminum Cap, marked as shown, projecting 3 ins. above the ground.

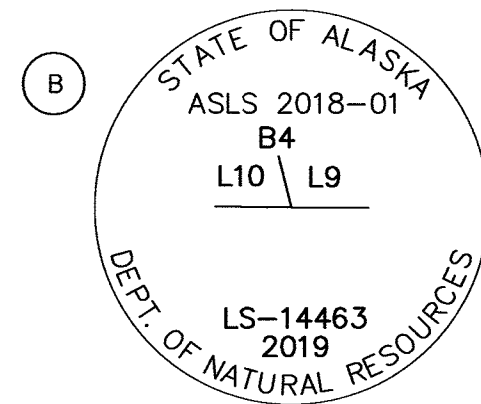


Recovered a 2-1/2 ins. diam. Aluminum Post, with a 3-1/4 ins. Aluminum Cap, marked as shown, projecting 2 ins. out of the ground.
Carsonite witness post to the South.

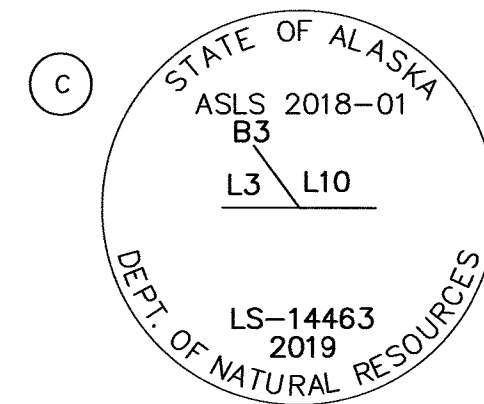
PRIMARY MONUMENTS SET



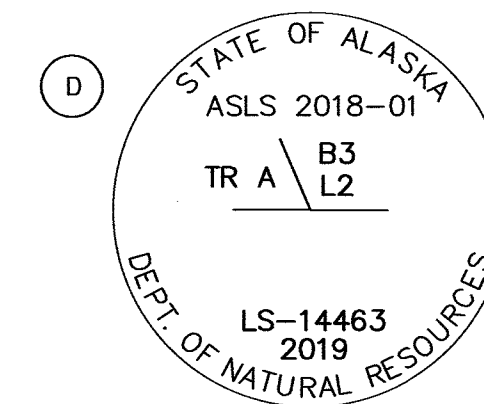
Set an Aluminum Post, 2 1/2 ins. diam. x 28 ins. long, 26 ins. in the ground, with an Aluminum Cap, 3 1/4 ins. diam., marked as shown, with a dark gray cow magnet deposited at the base of the monument.
BT 1 7" Cedar Bears N. 15° E., 8.6 ft.
BT 2 8" Cedar Bears S. 32° E., 8.7 ft.
BT 3 5" Cedar Bears S. 68° W., 10.9 ft.
Carsonite witness post to the North.



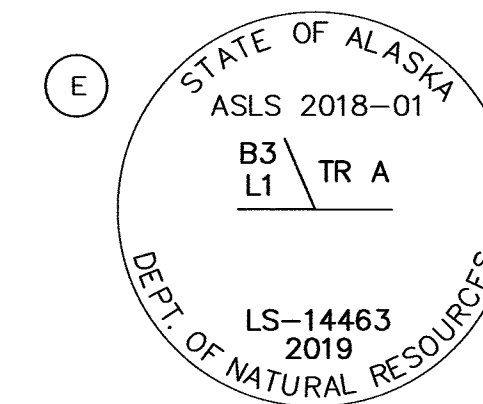
Set an Aluminum Post, 2 1/2 ins. diam. x 28 ins. long, 27 ins. in the ground, with an Aluminum Cap, 3 1/4 ins. diam., marked as shown, with a dark gray cow magnet deposited at the base of the monument.
BT 1 17" Spruce Bears N. 85° E., 7.6 ft.
BT 2 13" Spruce Bears S. 1° E., 10.9 ft.
BT 3 12" Spruce Bears N. 71° W., 17.1 ft.
Carsonite witness post to the North.



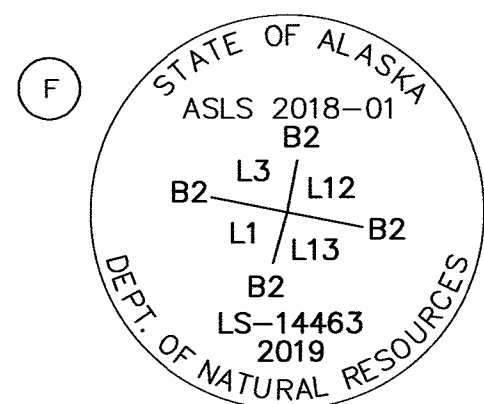
Set an Aluminum Post, 2 1/2 ins. diam. x 28 ins. long, 28 ins. in the ground, with an Aluminum Cap, 3 1/4 ins. diam., marked as shown, with a dark gray cow magnet deposited at the base of the monument.
BT 1 18" Cedar Bears N. 38° E., 19.3 ft.
BT 2 19" Cedar Bears S. 74° E., 3.3 ft.
BT 3 9" Cedar Bears N. 82° W., 14.5 ft.
Carsonite witness post to the North.



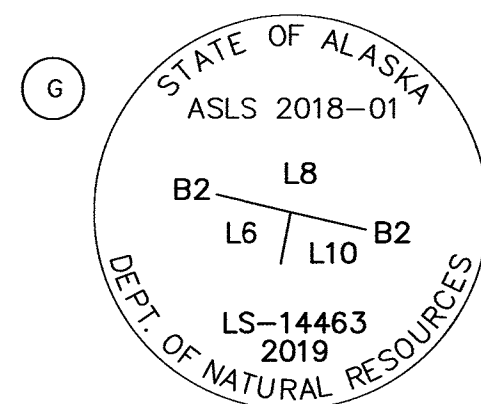
Set an Aluminum Post, 2 1/2 ins. diam. x 28 ins. long, 26 ins. in the ground, with an Aluminum Cap, 3 1/4 ins. diam., marked as shown, with a dark gray cow magnet deposited at the base of the monument.
BT 1 12" Cedar Bears N. 63° E., 3.6 ft.
BT 2 8" Cedar Bears S. 64° W., 22.0 ft.
BT 3 16" Cedar Bears N. 79° W., 20.1 ft.
Carsonite witness post to the North.



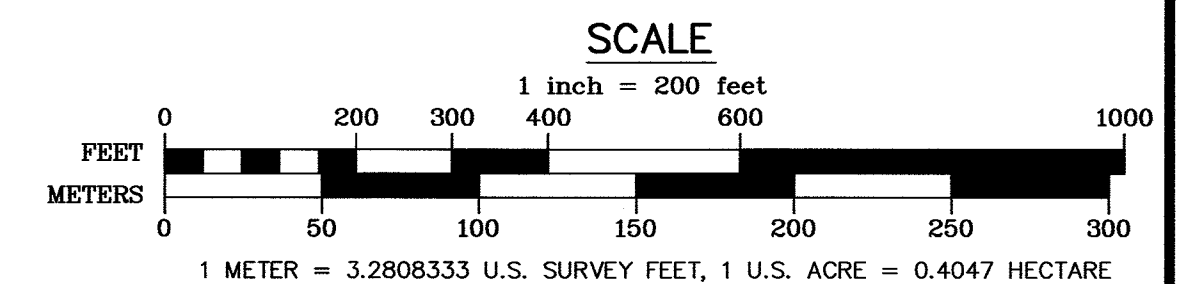
Set an Aluminum Post, 2 1/2 ins. diam. x 28 ins. long, 26 ins. in the ground, with an Aluminum Cap, 3 1/4 ins. diam., marked as shown, with a dark gray cow magnet deposited at the base of the monument.
BT 1 6" Spruce Bears N. 73° E., 15.5 ft.
BT 2 16" Spruce Bears S. 24° W., 27.7 ft.
BT 3 8" Spruce Bears N. 40° W., 34.9 ft.
Carsonite witness post to the North.



Set an Aluminum Post, 2 1/2 ins. diam. x 28 ins. long, 25 ins. in the ground, with an Aluminum Cap, 3 1/4 ins. diam., marked as shown, with a dark gray cow magnet deposited at the base of the monument.
BT 1 8" Cedar Bears N. 48° E., 30.1 ft.
BT 2 9" Cedar Bears S. 8° E., 36.7 ft.
BT 3 18" Spruce Bears N. 63° W., 14.6 ft.
Carsonite witness post to the North.

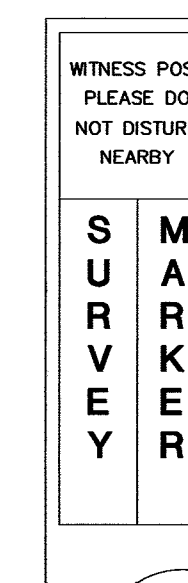


Set an Aluminum Post, 2 1/2 ins. diam. x 28 ins. long, 26 ins. in the ground, with an Aluminum Cap, 3 1/4 ins. diam., marked as shown, with a dark gray cow magnet deposited at the base of the monument.
BT 1 6" Cedar Bears S. 65° E., 18.4 ft.
BT 2 12" Cedar Bears S. 25° W., 20.6 ft.
BT 3 14" Cedar Bears N. 34° W., 2.8 ft.
Carsonite witness post to the North.

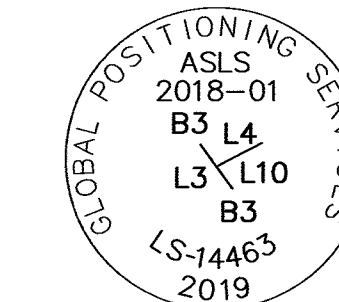


TYPICAL PRIMARY WITNESS POST

An Orange Fiberglass Reinforced Carsonite Post, 6 ft. long Set at a cardinal direction within 1 ft. of all primary monuments



TYPICAL SET SECONDARY MONUMENT



Set a 2 1/2" Aluminum Cap on a 5/8" Rebar, 30" Long, Driven 26"-30" in the ground Drive a 3/4" x 1" Wooden Lath 4 ft. Long, North of the Cor.

2020-2
Plat # Petersburg
Rec Dist 7/9
Date 2020
Time 11:51 AM

2020-17
Plat # Ketchikan
Rec Dist 7/9
Date 2020
Time 11:51 AM



DATE OF SURVEY Beginning: JUL 15, 2018 Ending: OCT 16, 2019		Jon C. Guffey, PLS Global Positioning Services, Inc. 2603 Blueberry Road Anchorage, Alaska 99503 COA No.: AECCI346	
STATE OF ALASKA DEPARTMENT OF NATURAL RESOURCES DIVISION OF MINING, LAND & WATER ANCHORAGE, ALASKA			
ALASKA STATE LAND SURVEY NO. 2018-01			
COFFMAN LOOP SUBDIVISION, PHASE II			
A SUBDIVISION OF PORTIONS OF GOVERNMENT LOTS 9 & 13, AND PORTIONS OF THE SE1/4NE1/4, THE SE1/4, AND THE SE1/4SW1/4, EXCLUDING ASLS 86-163, ASLS 96-61, ASLS 2005-56 & ASLS 2016-02			
LOCATED WITHIN PARTIALLY SURVEYED SECTION 2, TOWNSHIP 68 SOUTH, RANGE 81 EAST COPPER RIVER MERIDIAN, ALASKA			
CREATING LOTS 1-14, BLOCK 1; LOTS 1-14, BLOCK 2; LOTS 1-10, BLOCK 3; LOTS 1-11, BLOCK 4; AND TRACTS A & B CONTAINING 149.35 ACRES MORE OR LESS PETERSBURG & KETCHIKAN RECORDING DISTRICTS			
DRAWN BY: LLL/JCG		APPROVAL RECOMMENDED	
DATE: 02/2020		Karin Bow For 6/8/20	
SCALE: N/A		CHECKED: JCG	
		DNR FILE NO. ASLS 20180001	