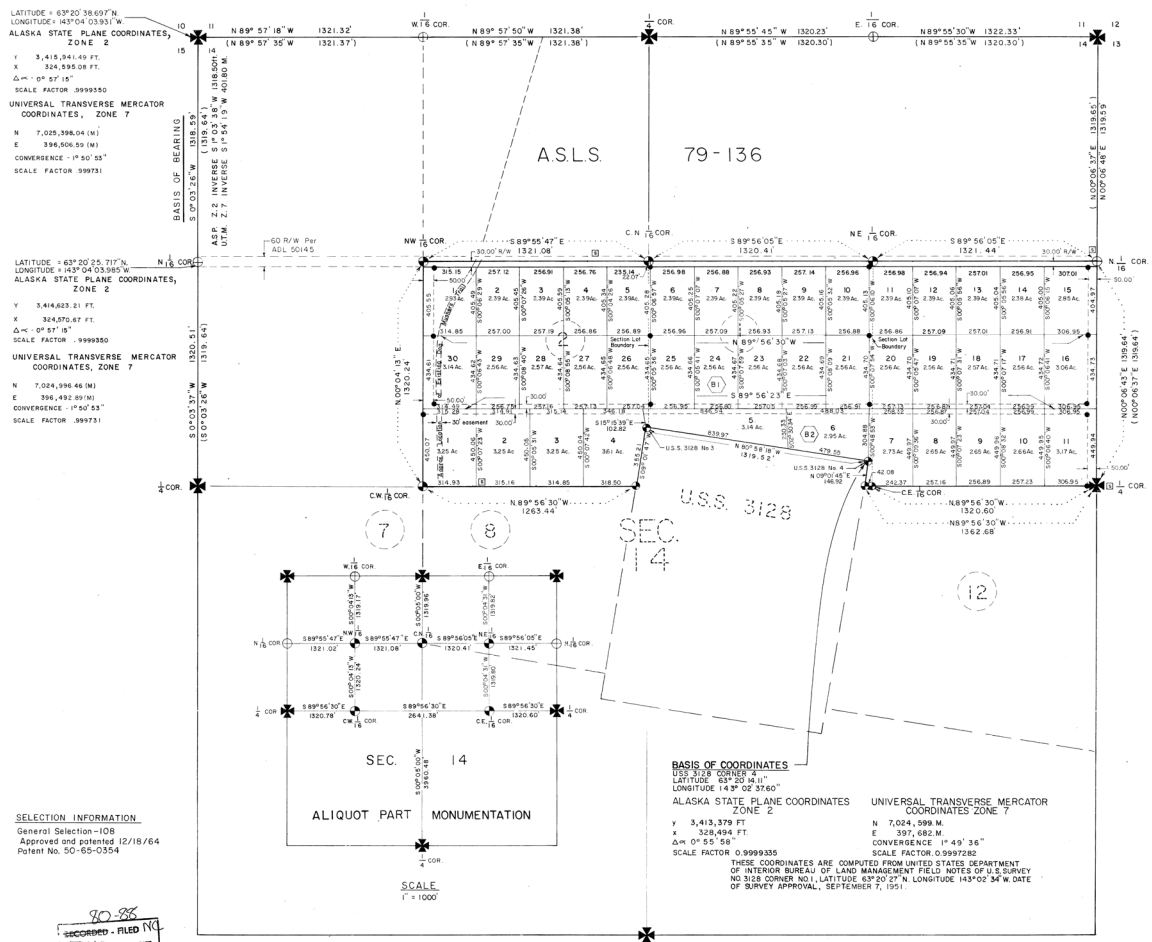


Surveyed Section 14, Township 18 North, Range 12 East, Copper River Meridian, Alaska



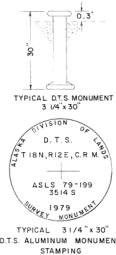
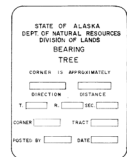
LATITUDE = 63°20'36.607"N  
 LONGITUDE = 143°04'03.931"W  
 ALASKA STATE PLANE COORDINATES, ZONE 2  
 Y 3,415,841.49 FT.  
 X 324,895.08 FT.  
 Δα = 0° 57' 51"  
 SCALE FACTOR 0.999350  
 UNIVERSAL TRANSVERSE MERCATOR COORDINATES, ZONE 7  
 N 7,025,398.04 (M)  
 E 396,006.89 (M)  
 CONVERGENCE = -1°50'53"  
 SCALE FACTOR 0.99971

LATITUDE = 63°20'25.717"N  
 LONGITUDE = 143°04'03.980"W  
 ALASKA STATE PLANE COORDINATES, ZONE 2  
 Y 3,414,633.21 FT.  
 X 324,870.67 FT.  
 Δα = 0° 57' 51"  
 SCALE FACTOR 0.999350  
 UNIVERSAL TRANSVERSE MERCATOR COORDINATES, ZONE 7  
 N 7,024,396.46 (M)  
 E 396,492.00 (M)  
 CONVERGENCE = -1°50'53"  
 SCALE FACTOR 0.99971

**BASIS OF COORDINATES**  
 U.S.S. 3128 CORNER  
 LATITUDE 63° 02' 37.60"  
 LONGITUDE 143° 02' 37.60"  
 ALASKA STATE PLANE COORDINATES ZONE 2  
 Y 3,413,379 FT  
 X 328,494 FT  
 Δα = 0° 55' 58"  
 SCALE FACTOR 0.9997282  
 UNIVERSAL TRANSVERSE MERCATOR COORDINATES ZONE 7  
 N 7,024,599 M  
 E 397,082 M  
 CONVERGENCE 1° 49' 36"  
 SCALE FACTOR 0.9997282  
 THESE COORDINATES ARE COMPUTED FROM UNITED STATES DEPARTMENT OF INTERIOR BUREAU OF LAND MANAGEMENT FIELD NOTES OF U.S. SURVEY NO. 1318 CORNER NO. 1. LATITUDE 63° 20' 25.717" N. LONGITUDE 143° 02' 54.7" W. DATE OF SURVEY APPROVAL, SEPTEMBER 7, 1951.

**SELECTION INFORMATION**  
 General Selection-109  
 Approved and patented 12/18/64  
 Patent No. 50-65-0354

80-88  
 RECORDED - FILED NO.  
 FBMS REC. DIV.  
 DATE 5-16-80  
 TIME 11:04 AM  
 REGISTERED BY ASIDVR



- LEGEND**
- ✕ B.L.M. primary monuments not recovered this survey.
  - ✕ B.L.M. primary monuments recovered this survey.
  - ⊕ D.T.S. primary monuments recovered this survey.
  - ⊕ D.T.S. aluminum cap primary monuments set this survey.
  - ⊕ Bearing and distances shown in parentheses indicate D.T.S. record. See note 3.
  - Secondary monuments set this survey (1/2" aluminum cap on 5/8" rebar).
  - ⊕ Location sign. See note 9.
  - ⊕ Public Access and Utility/Easement
  - ⊕ BLM section lot boundary.
  - ⊕ BLM section lot number.

**BEARING TREE DATA**

Corner	Bearing to Tree	Dist.	No.	Tree
N.E. 1/4	N 34° 00' E	12.1'	1	4" Spruce
	N 85° 30' E	4.0'	2	4" Aspen
C.E. 1/4	S 17° 45' E	15.3'	3	10" Spruce
	N 67° 45' E	20.3'	1	3" Spruce
N.E. 1/4	S 05° 00' E	15.7'	2	4" Spruce
	N 57° 00' W	26.0'	3	4" Spruce
N.E. 1/4	N 24° 00' E	52.1'	1	4" Aspen
	S 09° 30' W	62.5'	2	10" Spruce
C.N. 1/4	N 47° 00' W	51.8'	3	10" Spruce
	S 41° 45' E	53.5'	1	6" Spruce
N.W. 1/4	S 44° 00' W	54.2'	2	5" Spruce
	N 55° 30' W	54.4'	3	4" Aspen
N.W. 1/4	N 14° 00' E	53.1'	1	5" Aspen
	S 45° 45' E	61.5'	2	6" Aspen
C.W. 1/4	S 64° 45' W	49.2'	3	6" Spruce
	N 61° 15' E	15.5'	1	3" Spruce
C.W. 1/4	S 35° 30' W	15.3'	2	3" Spruce
	N 52° 15' W	24.2'	3	3" Spruce
C.W. 1/4	N 34° 00' E	15.2'	1	5" Spruce
	S 07° 00' E	17.7'	2	7" Spruce
C.W. 1/4	N 79° 00' W	33.9'	3	6" Spruce

**OWNERSHIP CERTIFICATE**  
 I, THE UNDERSIGNED, HEREBY CERTIFY THAT I AM THE DIRECTOR, DIVISION OF TECHNICAL SERVICES, AND THAT THE STATE OF ALASKA IS THE OWNER OF ALASKA STATE LAND SURVEY NO. 199 AS SHOWN HEREON. I HEREBY APPROVE THIS SURVEY AND PLAN FOR THE STATE OF ALASKA.  
 DATE 5/1/80  
 DIRECTOR, DIVISION OF TECHNICAL SERVICES

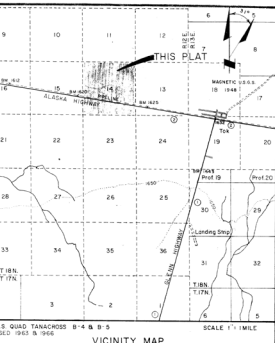
**NOTARY'S ACKNOWLEDGMENT**  
 SUBSCRIBED AND SWORN TO BEFORE ME THIS 2nd DAY OF May, 1980.  
 Andrew F. Potts  
 MY COMMISSION EXPIRES

**DEDICATION OF EASEMENTS, PUBLIC UTILITIES AND RIGHT-OF-WAY**  
 I, HEREBY DEDICATE FOR PUBLIC OR PRIVATE USE, AS NOTED, ALL EASEMENTS, PUBLIC UTILITY AREAS, AND RIGHT-OF-WAY AS SHOWN AND DESCRIBED HEREON.  
 DATE 5/1/80  
 DIRECTOR, DIVISION OF TECHNICAL SERVICES

**NOTARY'S ACKNOWLEDGMENT**  
 SUBSCRIBED AND SWORN TO BEFORE ME THIS 2nd DAY OF May, 1980.  
 Andrew F. Potts  
 MY COMMISSION EXPIRES

**SURVEYOR'S CERTIFICATE**  
 I HEREBY CERTIFY THAT I AM PROPERLY REGISTERED AND LICENSED TO PRACTICE LAND SURVEYING IN THE STATE OF ALASKA, AND THAT THIS PLAN REPRESENTS A SURVEY MADE BY ME OR UNDER MY DIRECT SUPERVISION, AND THE MONUMENTS SHOWN THEREON ACTUALLY EXIST AS DESCRIBED, AND THAT ALL DIMENSIONS AND OTHER DETAILS ARE CORRECT.  
 DATE March 26, 1980  
 REGISTRATION NUMBER 3618  
 Andrew F. Potts  
 ANDREW F. POTTS

- NOTES:**
1. This survey was accomplished in accordance with G.S.C. No. 188.
  2. Bearings are true bearings and distances are true distances.
  3. Record distances, bearings and monument positions are taken from the Division of Technical Services, Supplemental Cadastral Survey Plat of Sections 14, 15, 22, 23, 27, 18, 12 E., Copper River Meridian, Alaska, filed in the Fairbanks Recording District on December 15, 1977, under plat file number 77-210.
  4. Lot corners are monumented with a 5/8" x 36" rebar or higher order monument except that when a lot corner falls within a public access and utility easement, the monument is set at the intersection of the lot line and the easement line.
  5. All lands encompassed by this plat are subject to a 50' access easement along the OHW line of any water frontage.
  6. All section lines are subject to a 50' easement each side of the section line, which is reserved to the State of Alaska for public highway under A.S. 19.10.010.
  7. The Metric Data is being shown hereon for information purposes only.
  8. Abbreviation ADL (Alaska Division of Lands) and DTS (Division of Technical Services) are synonymous.
  9. Location signs are temporary and are placed to aid the public in locating the project area. These signs will be removed approximately one year after the survey has been completed.
  10. Any subsequent owners of any parcel within the subdivision automatically becomes a member of the Homeowners Association created to govern the subdivision.
  11. Parcels within this subdivision may contain wetlands as defined within the Bureau of Section 404 of the Clean Water Act and may require Department of Army Corps of Engineers permit prior to the placement of fill material into these areas. Contact with Department of Army Corps of Engineers prior to commencing construction.



U.S.G.S. QUAD TANANAROV B-4-B-9  
 REVISED 1963 & 1966  
 SCALE 1" = 1 MILE

**STATE OF ALASKA**  
 DEPARTMENT OF NATURAL RESOURCES  
 DIVISION OF TECHNICAL SERVICES  
 ANCHORAGE, ALASKA

**ALASKA STATE LAND SURVEY NO. 79-199**  
 Within Surveyed Section 14, T.18N, R.12 E., C.R.M. Alaska  
 Copper River Meridian, Alaska

**DATE OF SURVEY** 9/1/79  
**DATE** 11/9/79

**NAME OF SURVEYOR** Andrew F. Potts  
**REGISTRATION NUMBER** 3618

**DRAWN BY** K.M.L.  
**DATE** 11/9/79  
**CHECKED** [Signature]  
**FILE NO.** 79-199

**ALASKA STATE LAND SURVEY No. 79-199**  
 Within Surveyed Section 14, T.18N, R.12 E., C.R.M. Alaska  
 Total Area Surveyed = 109.73 Ac. (44.41 Hectares)