

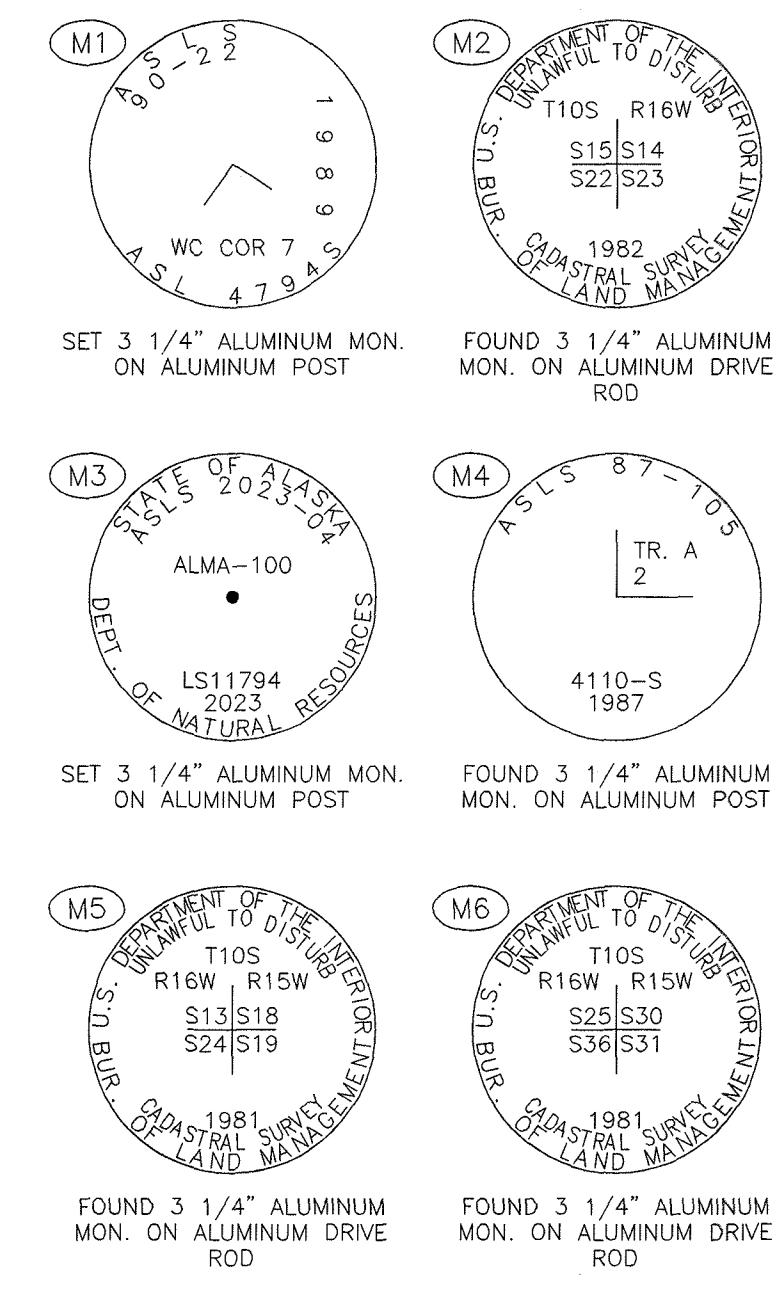
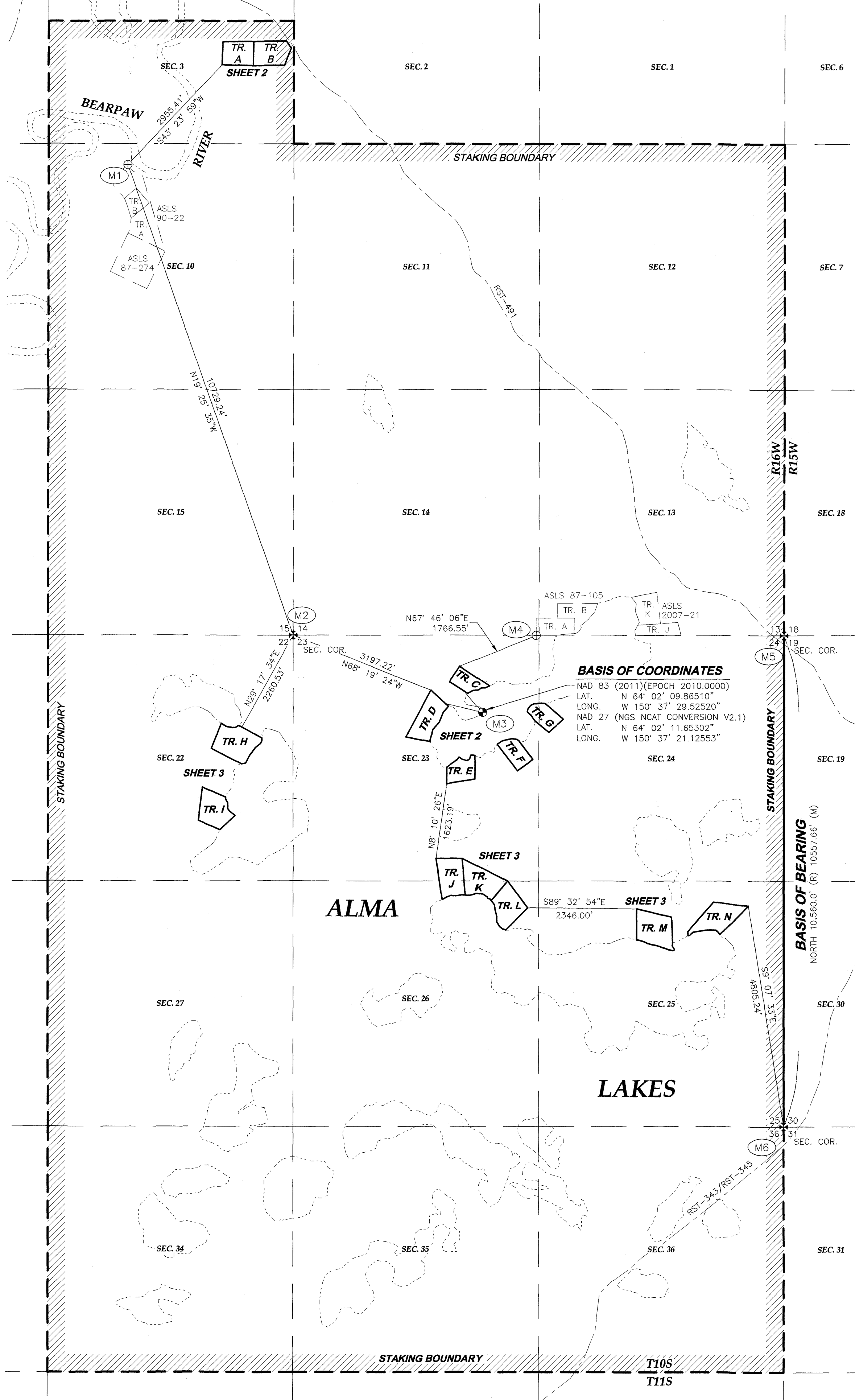
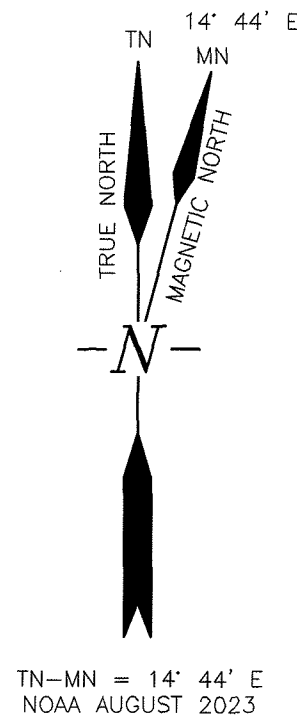
ALMA LAKES REMOTE RECREATIONAL CABIN SITES

ASLS 2023-04

INDEX SHEET

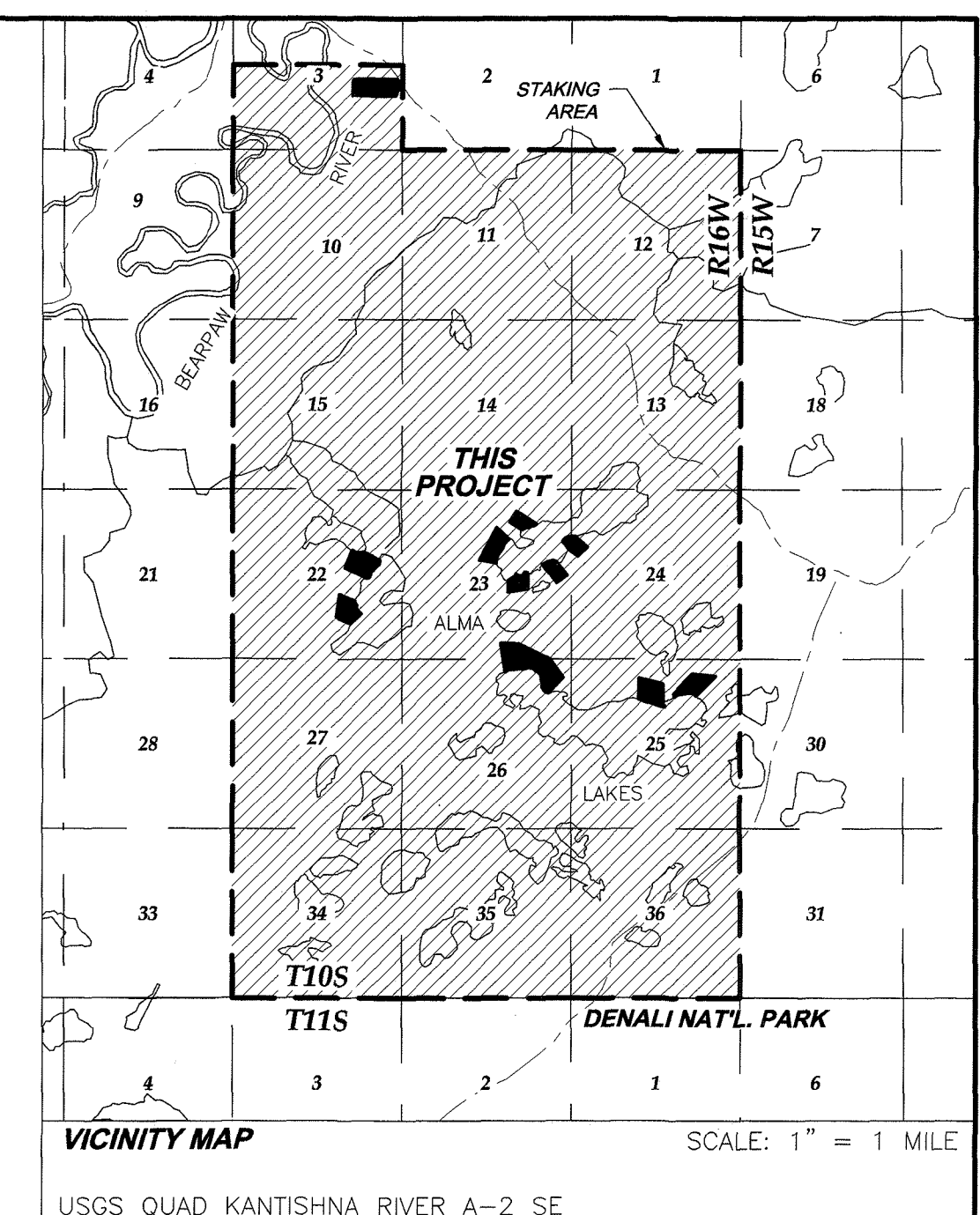
NOTES

1. THIS SURVEY WAS ACCOMPLISHED IN ACCORDANCE WITH AS 38.05.600, GSC 863, AND SSI ASLS 2023-04.
2. THE ERROR OF CLOSURE OF THIS SURVEY DOES NOT EXCEED 1:5000, AND/OR CORNER POSITIONS HAVE A RELATIVE POSITION ACCURACY AT THE 95 PERCENT CONFIDENCE LEVEL OF 0.13 FEET PLUS 100 PPM.
3. **BEARINGS AND DISTANCES:** ARE BASED ON HIGH PRECISION GLOBAL NAVIGATION SATELLITE SYSTEM TECHNOLOGY IN THE NAD83 (CORS 2011) DATUM, USING LEICA RECEIVERS, DIFFERENTIALLY CORRECTED AND PROCESSED USING LEICA INFINITY, VERSION 3.3 SOFTWARE. LOCAL PLANE BEARINGS ARE ORIENTED TO A LOCAL BASIS OF BEARING (SEE NOTE 5). ALL BEARINGS AND DISTANCES ARE MEASURED UNLESS NOTED OTHERWISE. THE DISTANCES SHOWN HEREON ARE REDUCED TO HORIZONTAL GROUND DISTANCES. DISTANCE UNITS ARE U.S. SURVEY FEET (39.37/12 FEET PER METER EXACTLY).
4. **BASIS OF COORDINATES:** THE BASIS OF COORDINATES IS ALMA-100 2023 (M3), A 3 1/4" MAGNETIZED ALUMINUM CAP ON 2 1/2" OUTER DIAMETER X 30" ALUMINUM FLANGED PIPE WITH A MAGNET AT THE BASE. SET THIS SURVEY. SAID MONUMENT HAS PROJECT COORDINATES OF 49,940.88' N, 99918.06' E U.S. SURVEY FEET.
5. **BASIS OF BEARING:** THE BASIS OF BEARING IS A LOCAL PLANE BEARING BETWEEN SECTION CORNER MONUMENTS M5 AND M6. M5 BEARS NORTH AND 10,557.66' U.S. SURVEY FEET FROM M6. M5 HAS NAD83 ALASKA STATE PLANE ZONE 4 COORDINATES OF 3,669,553.92' N, 1,546,745.93' E U.S. SURVEY FEET. THE STATE PLANE GRID BEARING OF THE BASIS OF BEARING LINE IS N0° 31' 31"E. THIS APPLIES TO ALL MEASURED BEARINGS SHOWN HEREON, INCLUDING TRACT TIES FROM THE BASIS OF COORDINATES.
6. **COORDINATES:** COORDINATES ARE BASED ON AN OPUS SOLUTION NAD83 (2011) (EPOCH:2010.0000) FOR M3 (STAMPED ALMA-100 2023). THE COORDINATES WERE CONSTRAINED TO THE NATIONAL SPATIAL REFERENCE SYSTEM USING THE COR'S REFERENCE STATIONS: AC74 (PID DP3849), AC75 (PID DP3852), AND WIKR (PID 1831).
7. FOR BOUNDARY LINES INTERSECTING THE ORDINARY HIGH WATER LINE (SEE NOTE 11), DISTANCES SHOWN ARE TOTAL DISTANCE TO ORDINARY HIGH WATER AS SURVEYED UNLESS INDICATED OTHERWISE. MONUMENT TO MONUMENT DISTANCES ARE CALCULATED BY SUBTRACTING THE WITNESS DISTANCE (WD) FROM THE OVERALL DISTANCE.
8. ALL PARCELS OF LAND OWNED BY THE STATE OF ALASKA, LOCATED WITHIN 50.00 FEET OF, OR BISECTED BY A SURVEYED OR PROTRACTED SECTION LINE, ARE SUBJECT TO A 50 FOOT (50') EASEMENT, ON EACH SIDE OF THE SECTION LINE, WHICH IS RESERVED TO THE STATE OF ALASKA FOR PUBLIC HIGHWAYS UNDER A.S.19.10.D10.
9. THE EXISTING LESSEES' CLAIM CORNERS WERE RECOVERED AND USED TO CONTROL THE LOCATION OF TRACT BOUNDARIES.
10. THE EASEMENT SIDELINES SHALL BE EXTENDED OR SHORTENED TO MEET AT THE ANGLE POINTS AND TERMINATE AT THE BOUNDARIES WITH NON-STATE OWNED LANDS.
11. THE NATURAL MEANDERS OF THE LINE OF ORDINARY HIGH WATER (OHW) OF ALMA LAKES FORM THE TRUE BOUNDARIES OF TRACTS C, D, E, F, G, H, I, J, K, L, M, AND N. THE APPROXIMATE LINE OF OHW, AS SHOWN, IS FOR AREA COMPUTATIONS ONLY, WITH THE TRUE CORNERS BEING ON THE EXTENSION OF THE SIDELINES AND THEIR INTERSECTION WITH THE NATURAL MEANDERS.
12. PARCELS MAY CONTAIN WETLANDS. A U.S. ARMY CORPS OF ENGINEERS WETLAND PERMIT MAY BE REQUIRED TO DEVELOP ANY WETLAND AREAS.
13. WETLANDS SHOWN HEREON ARE AS APPARENT TO THE FIELD CONDITIONS AT THE TIME OF SURVEY AND ARE NOT DELINEATED IN ACCORDANCE WITH THE 1987 ARMY CORPS OF ENGINEERS WETLANDS DELINEATION MANUAL.
14. SECTIONS SHOWN ARE PROTRACTED AND ARE SUBJECT TO SURVEY. THE PROTRACTED SECTION LINES SHOWN ARE COMPUTED FROM THE POSITIONS OF THE SECTION CORNERS ON THE APPROVED BLM PROTRACTOR DIAGRAM.
15. MONUMENTS SET THIS SURVEY ARE A 3 1/4" ADNR MAGNETIZED ALUMINUM CAP ON A 2 1/2" OUTER DIAMETER X 30" ALUMINUM FLANGED PIPE WITH A MAGNET AT THE BASE. A 6" CARSONITE POST SET 2' INTO THE GROUND WAS SET WITHIN 1' TO THE NORTH OF THE MONUMENT. BEARING TREES ARE SET WITH STATE OF ALASKA ALUMINUM TAGS GIVING DIRECTION, DISTANCE, SET BY, AND DATE.
16. A 50' WIDE PUBLIC ACCESS EASEMENT COINCIDENT WITH AND 50' UPLAND FROM THE ORDINARY HIGH WATER (OHW) LINE SHALL BE RESERVED TO THE STATE OF ALASKA IN ACCORDANCE WITH AS 38.05.127.
17. TRACTS A-N ARE SUBJECT TO THE FOLLOWING:
 - 17.1. A 30' WIDE PUBLIC ACCESS AND UTILITY EASEMENT ALONG ALL INTERIOR PARCEL BOUNDARY LINES, EXCEPT BOUNDARIES BORDERING THE ORDINARY HIGH WATER LINE
 - 17.2. A 50' WIDE PUBLIC ACCESS EASEMENT CENTERED ON EXISTING TRAILS THAT RUN THROUGH PARCELS OR ALONG PARCEL BOUNDARIES.
 - 17.3. A 100' BUILDING SETBACK FROM THE OHW LINE OF PUBLIC AND NAVIGABLE WATER BODIES.
18. ADJACENT PARCELS ARE OWNED BY THE STATE OF ALASKA EXCEPTING THOSE SURROUNDING TRACTS A AND B, WHICH ARE OWNED BY THE GOVERNMENT OF THE UNITED STATES OF AMERICA (LOT 1, SEC. 3, T10S, R16W, S18, AK). TENTATIVE APPROVAL 1981-0003 HAS BEEN GRANTED TO THE STATE OF ALASKA FOR SAID LOT 1, SEC. 3.



TRACT	CORNER	BEARING	DISTANCE
A	1	N19° 34' 26"W	14,748.69'
B	1	N17° 03' 22"W	14,547.03'
C	WC/MC 1	N40° 43' 26"W	610.36'
D	WC/MC 1	S62° 15' 00"W	1,326.27'
E	WC/MC 1	S7° 56' 26"W	1,040.09'
F	WC/MC 1	S51° 01' 54"E	1,066.39'
G	WC/MC 1	N83° 01' 59"E	1,384.45'
H	WC/MC 1	S79° 10' 41"W	5,448.45'
I	WC/MC 1	S66° 28' 12"W	6,233.26'
J	WC/MC 1	S12° 12' 10"W	4,080.18'
K	WC/MC 1	S5° 15' 28"W	3,892.12'
L	WC/MC 1	S3° 18' 02"E	4,002.16'
M	WC/MC 1	S34° 51' 51"E	5,817.06'
N	WC/MC 1	S42° 59' 50"E	6,495.29'

	FOUND BLM MONUMENT
	SET DNR PRIMARY MONUMENT
	FOUND DNR PRIMARY MONUMENT
	TRACT BOUNDARY
	SURVEYED TIE
	SECTION LINE (SURVEYED)
	SECTION LINE (PROTRACTED)
	ORDINARY HIGH WATER (OHW)
	APPARENT WETLAND
	EDGE OF WATER (APPROX.)
	TRAIL (APPROX.)
(R)	RECORD MEASUREMENT PER BLM TOWNSHIP PLAT
(M)	MEASURED DIMENSION
(C)	COMPUTED DIMENSION
(P)	BEARING PER BLM PROTRACTOR DIAGRAM (NAD27 BEARINGS)
SLE	SECTION LINE EASEMENT
TE	TRAIL EASEMENT
PA/UE	PUBLIC ACCESS AND UTILITY EASEMENT
PAE	PUBLIC ACCESS EASEMENT RESERVED TO THE STATE PER AS 38.05.127
BSB	BUILDING SETBACK FROM ORDINARY HIGH WATER
WD	WITNESS CORNER MEANDER CORNER DISTANCE



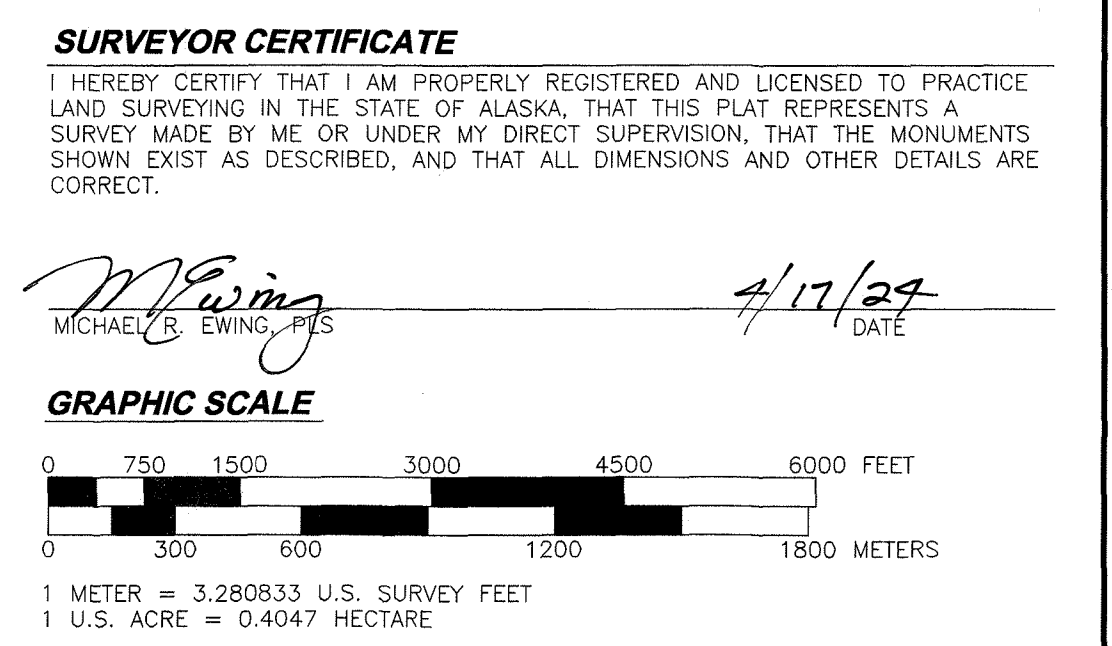
CERTIFICATE OF OWNERSHIP AND DEDICATION
 I, THE UNDERSIGNED, HEREBY CERTIFY THAT I AM THE DIRECTOR, DIVISION OF MINING, LAND AND WATER AND THAT THE STATE OF ALASKA IS THE OWNER OF ASLS NO. 2023-04, AS SHOWN HEREON. I HEREBY APPROVE THIS SURVEY AND PLAT FOR THE STATE OF ALASKA, AND DEDICATE FOR PUBLIC OR PRIVATE USE AS NOTED. ALL EASEMENTS, PUBLIC UTILITY AREAS, AND RIGHTS-OF-WAY AS SHOWN AND DESCRIBED HEREON.
 DATED 7/22/2024
[Signature]
 DIRECTOR, DIVISION OF MINING, LAND AND WATER

NOTARY ACKNOWLEDGEMENT
 SUBSCRIBED AND SWORN TO BEFORE ME THIS 22 DAY OF July 2024
 FOR: Candelyn M. Corvick
[Signature]
 NOTARY PUBLIC FOR ALASKA
 MY COMMISSION EXPIRES with office

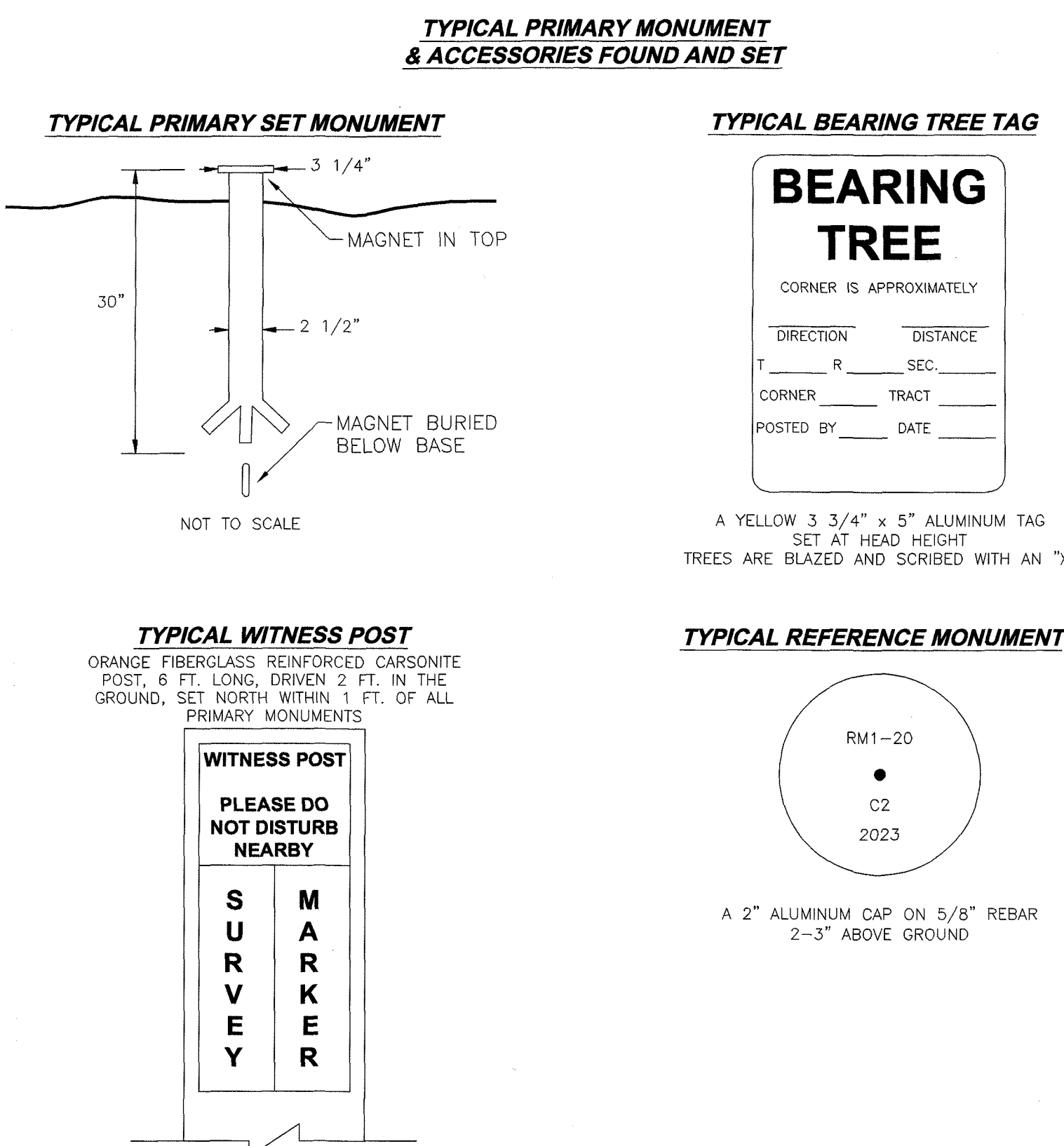
CERTIFICATE OF SUBDIVISION APPROVAL
 THIS SUBDIVISION HAS BEEN REVIEWED AND FOUND TO BE IN COMPLIANCE WITH DENALI BOROUGH CODE 9.10 TITLED SUBDIVISIONS AND THE APPLICABLE PROVISIONS OF THE LAW AND IS HEREBY APPROVED.
[Signature] 8-12-24
 DENALI BOROUGH APPROVING OFFICIAL

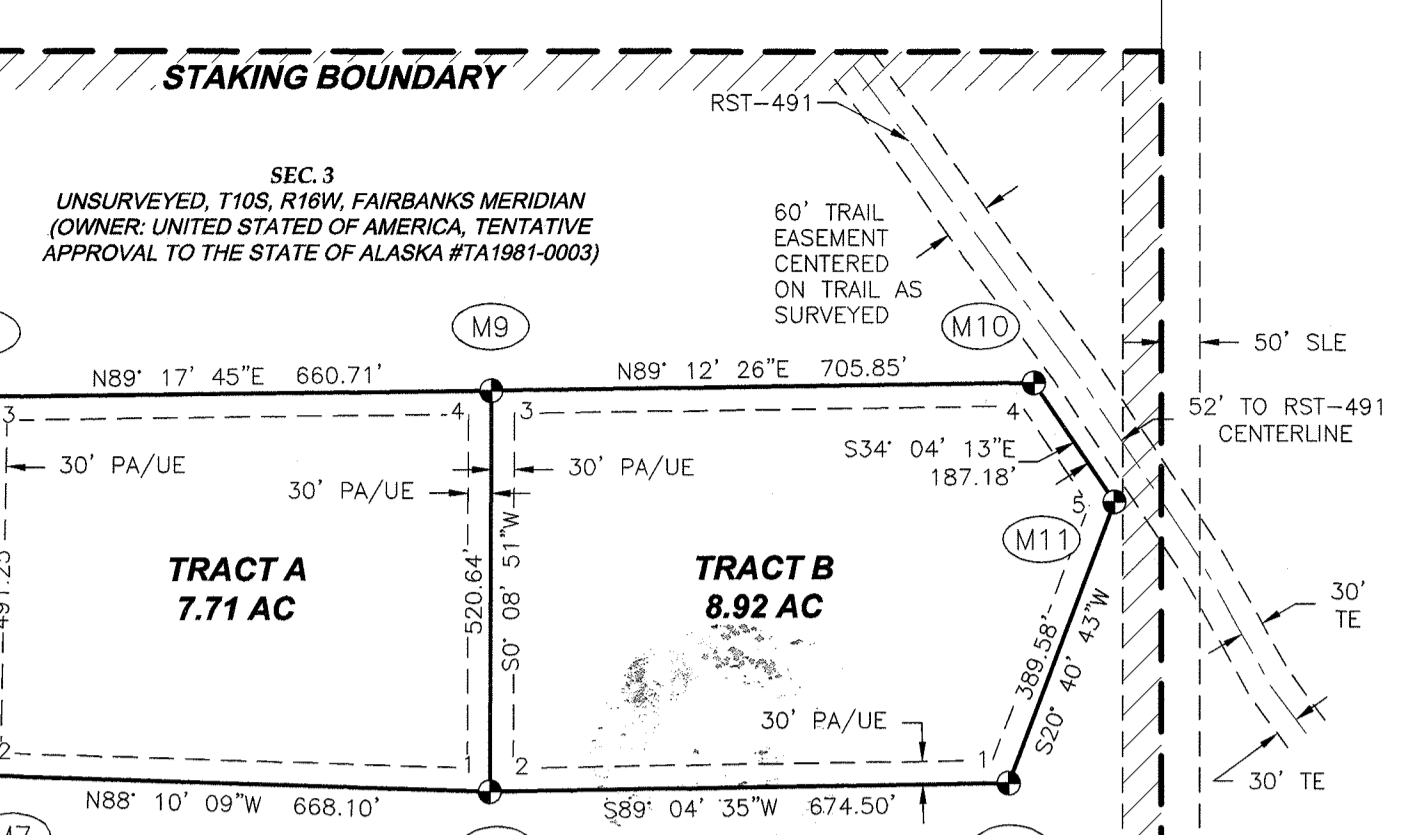
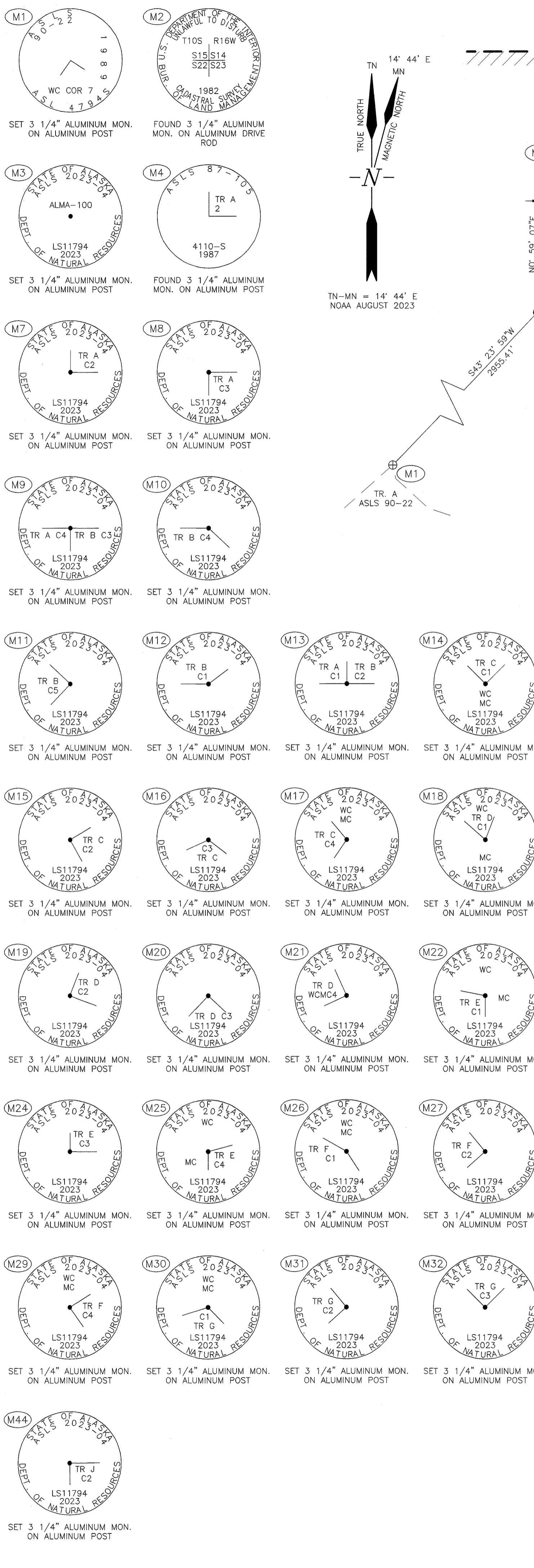
TAX CERTIFICATE
 THIS SUBDIVISION LIES WITHIN THE DENALI BOROUGH AND IS NOT SUBJECT TO TAXATION AT THIS TIME.

SURVEYOR CERTIFICATE
 I HEREBY CERTIFY THAT I AM PROPERLY REGISTERED AND LICENSED TO PRACTICE LAND SURVEYING IN THE STATE OF ALASKA, THAT THIS PLAT REPRESENTS A SURVEY MADE BY ME OR UNDER MY DIRECT SUPERVISION, THAT THE MONUMENTS SHOWN EXIST AS DESCRIBED, AND THAT ALL DIMENSIONS AND OTHER DETAILS ARE CORRECT.
[Signature] 4/17/24
 MICHAEL R. EWING, PLS DATE



DATE OF SURVEY: 07/28/2023	SURVEYOR: MICHAEL R. EWING
BEGINNING: 07/28/2023	RECON LLC AECL #922
ENDING: 08/08/2023	565 W RECON CIR PALMER, AK 99645 907-746-3630
STATE OF ALASKA DEPARTMENT OF NATURAL RESOURCES DIVISION OF MINING, LAND, AND WATER ANCHORAGE, ALASKA	
ALASKA STATE LAND SURVEY NO. 2023-04 ALMA LAKES REMOTE RECREATIONAL CABIN SITES CREATING TRACTS A THROUGH N WITHIN SECTIONS 3, 22, 23, 24, 25, AND 26, TOWNSHIP 10 SOUTH, RANGE 16 WEST, FAIRBANKS MERIDIAN, ALASKA, FAIRBANKS RECORDING DISTRICT, CONTAINING APPROXIMATELY 128.75 ACRES	
DRAWN BY: DVD	DNR APPROVAL RECOMMENDED
DATE: 4/16/2024	<i>[Signature]</i> 7/16/2024
SCALE: 1"=1500'	CHECKED BY: MRE
	SHEET: 1 OF 4
	FILE NO. ASLS 20230004





LINE #	DIRECTION	LENGTH
L1	S65° 41' 31"W	108.14'
L2	N89° 01' 49"W	78.45'
L3	S49° 12' 43"W	74.09'
L4	S85° 32' 18"W	106.59'
L5	S60° 17' 02"W	130.32'
L6	S40° 39' 03"W	172.95'
L7	S22° 08' 21"W	230.85'
L8	S40° 12' 07"W	205.41'
L9	S14° 43' 55"W	242.81'
L10	S20° 21' 56"E	22.09'

LINE #	DIRECTION	LENGTH
L11	N54° 52' 24"E	274.13'
L12	N38° 35' 01"E	74.41'
L13	S54° 02' 22"E	88.58'
L14	S76° 24' 11"E	100.96'
L15	N54° 39' 53"E	69.97'
L16	N17° 21' 56"E	81.60'
L17	S86° 41' 35"E	90.08'
L18	N55° 38' 39"E	119.99'
L19	N77° 31' 33"E	224.75'
L20	S80° 13' 25"E	107.25'
L21	S54° 11' 21"E	50.40'

LINE #	DIRECTION	LENGTH
L22	N1° 28' 56"E	6.43'
L23	N36° 16' 53"W	141.28'
L24	N44° 44' 22"W	109.97'
L25	N15° 59' 22"E	71.85'
L26	N42° 29' 55"E	81.51'
L27	N63° 59' 29"E	76.94'
L28	N84° 03' 20"E	159.31'
L29	S87° 11' 29"E	86.82'

MON. ID	LATITUDE	LONGITUDE
M7	64° 04' 26.6" N	150° 39' 20.8" W
M8	64° 04' 26.8" N	150° 39' 35.8" W
M9	64° 04' 31.6" N	150° 39' 35.7" W
M10	64° 04' 31.8" N	150° 39' 04.9" W
M11	64° 04' 30.3" N	150° 39' 02.8" W
M12	64° 04' 26.7" N	150° 39' 05.7" W
M13	64° 04' 31.7" N	150° 39' 20.8" W

NAD 83 GEODETIC COORDINATES, AS SHOWN IN THESE TABLES, ARE ROUNDED TO THE NEAREST TENTH OF A SECOND AND ARE LISTED TO AID LESSEES AND PROPERTY OWNERS IN FINDING THEIR BOUNDARY CORNER MONUMENTS. THESE COORDINATES ARE NOT INTENDED TO BE USED TO ESTABLISH OR RE-ESTABLISH BOUNDARIES. SEE SHEET 1 FOR TYPICAL WITNESS POST AND TYPICAL BEARING TREE TAG DETAILS.

LESSEE CERTIFICATE
I, THE UNDERSIGNED, HEREBY CERTIFY THAT I AM THE LESSEE AS SHOWN HEREON. I HEREBY APPROVE THIS SURVEY AND PLAT.
5/31/24
DATE

NOTARY ACKNOWLEDGEMENT
SUBSCRIBED AND SWORN TO BEFORE ME THIS 31 DAY OF May 2024.
FOR: Jeffrey Wyatt
NOTARY PUBLIC FOR ALASKA
MY COMMISSION EXPIRES with office

LESSEE CERTIFICATE
I, THE UNDERSIGNED, HEREBY CERTIFY THAT I AM THE LESSEE AS SHOWN HEREON. I HEREBY APPROVE THIS SURVEY AND PLAT.
17 May 24
DATE

NOTARY ACKNOWLEDGEMENT
SUBSCRIBED AND SWORN TO BEFORE ME THIS 17 DAY OF May 2024.
FOR: Audrey Lammers
NOTARY PUBLIC FOR ALASKA
MY COMMISSION EXPIRES with office

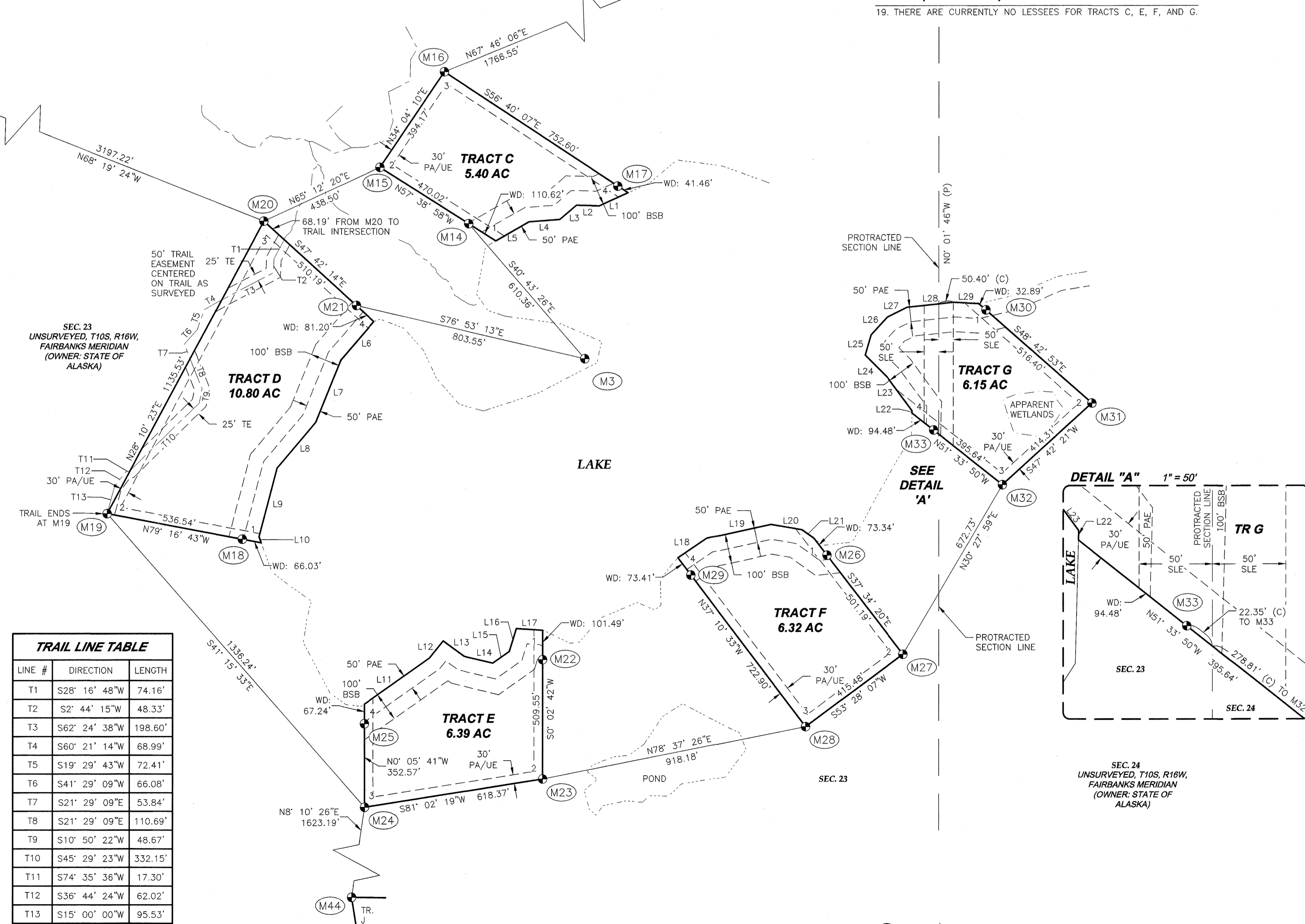
LESSEE CERTIFICATE
I, THE UNDERSIGNED, HEREBY CERTIFY THAT I AM THE LESSEE AS SHOWN HEREON. I HEREBY APPROVE THIS SURVEY AND PLAT.
10 JULY 24
DATE

NOTARY ACKNOWLEDGEMENT
SUBSCRIBED AND SWORN TO BEFORE ME THIS 10th DAY OF July 2024.
FOR: Michael Joky
NOTARY PUBLIC FOR ALASKA
MY COMMISSION EXPIRES With office

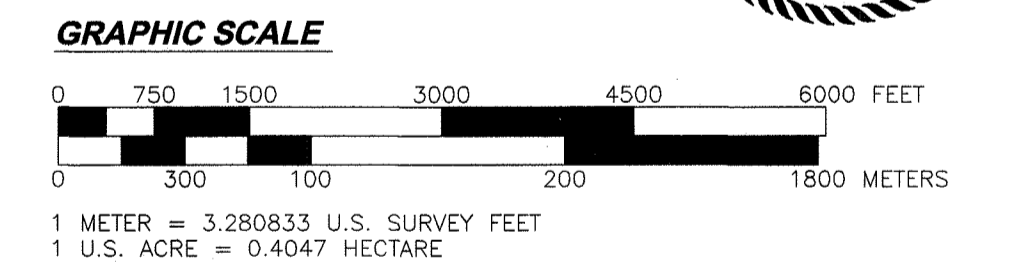
MON. ID	LATITUDE	LONGITUDE
M14	64° 02' 14.4" N	150° 37' 38.5" W
M15	64° 02' 16.3" N	150° 37' 45.3" W
M16	64° 02' 19.5" N	150° 37' 40.3" W
M17	64° 02' 15.7" N	150° 37' 27.0" W
M18	64° 02' 03.8" N	150° 37' 55.9" W
M19	64° 02' 04.6" N	150° 38' 06.2" W
M20	64° 02' 14.5" N	150° 37' 54.2" W
M21	64° 02' 11.7" N	150° 37' 47.1" W
M22	64° 01' 59.7" N	150° 37' 32.7" W
M23	64° 01' 55.7" N	150° 37' 32.7" W
M24	64° 01' 54.8" N	150° 37' 46.4" W
M25	64° 01' 57.6" N	150° 37' 46.5" W
M26	64° 02' 03.3" N	150° 37' 10.9" W
M27	64° 01' 59.9" N	150° 37' 05.0" W
M28	64° 01' 57.5" N	150° 37' 12.5" W
M29	64° 02' 02.6" N	150° 37' 21.3" W
M30	64° 02' 11.5" N	150° 36' 58.7" W
M31	64° 02' 08.4" N	150° 36' 50.5" W
M32	64° 02' 05.6" N	150° 36' 57.4" W
M33	64° 02' 07.5" N	150° 37' 02.7" W

- LEGEND**
- ⊗ FOUND BLM MONUMENT
 - ⊙ SET DNR PRIMARY MONUMENT
 - ⊕ FOUND DNR PRIMARY MONUMENT
 - TRACT BOUNDARY
 - SURVEYED TIE
 - - - EASEMENT (ESMT)
 - - - SECTION LINE (PROTRACTED)
 - - - ORDINARY HIGH WATER (OHW)
 - - - APPARENT WETLANDS
 - - - EDGE OF WATER
 - - - TRAIL
 - SLE SECTION LINE EASEMENT
 - TE TRAIL EASEMENT
 - PA/UE PUBLIC ACCESS AND UTILITY EASEMENT
 - PAE PUBLIC ACCESS EASEMENT RESERVED TO THE STATE PER AS 38.05.127
 - BSB BUILDING SETBACK FROM ORDINARY HIGH WATER
 - WD WITNESS CORNER MEASUREMENT CORNER DISTANCE
 - (C) COMPUTED DIMENSION
 - (P) BEARING PER BLM PROTRACTION DIAGRAM (NAD27 BEARINGS)

NOTES (CONTINUED)
19. THERE ARE CURRENTLY NO LESSEES FOR TRACTS C, E, F, AND G.



LINE #	DIRECTION	LENGTH
T1	S28° 16' 48"W	74.16'
T2	S2° 44' 15"W	48.33'
T3	S62° 24' 38"W	198.60'
T4	S60° 21' 14"W	68.99'
T5	S19° 29' 43"W	72.41'
T6	S41° 29' 09"W	66.08'
T7	S21° 29' 09"E	53.84'
T8	S21° 29' 09"E	110.69'
T9	S10° 50' 22"W	48.67'
T10	S45° 29' 23"W	332.15'
T11	S74° 35' 36"W	17.30'
T12	S36° 44' 24"W	62.02'
T13	S15° 00' 00"W	95.53'



DATE OF SURVEY: 07/28/2023
BEGINNING: 07/28/2023
ENDING: 08/08/2023

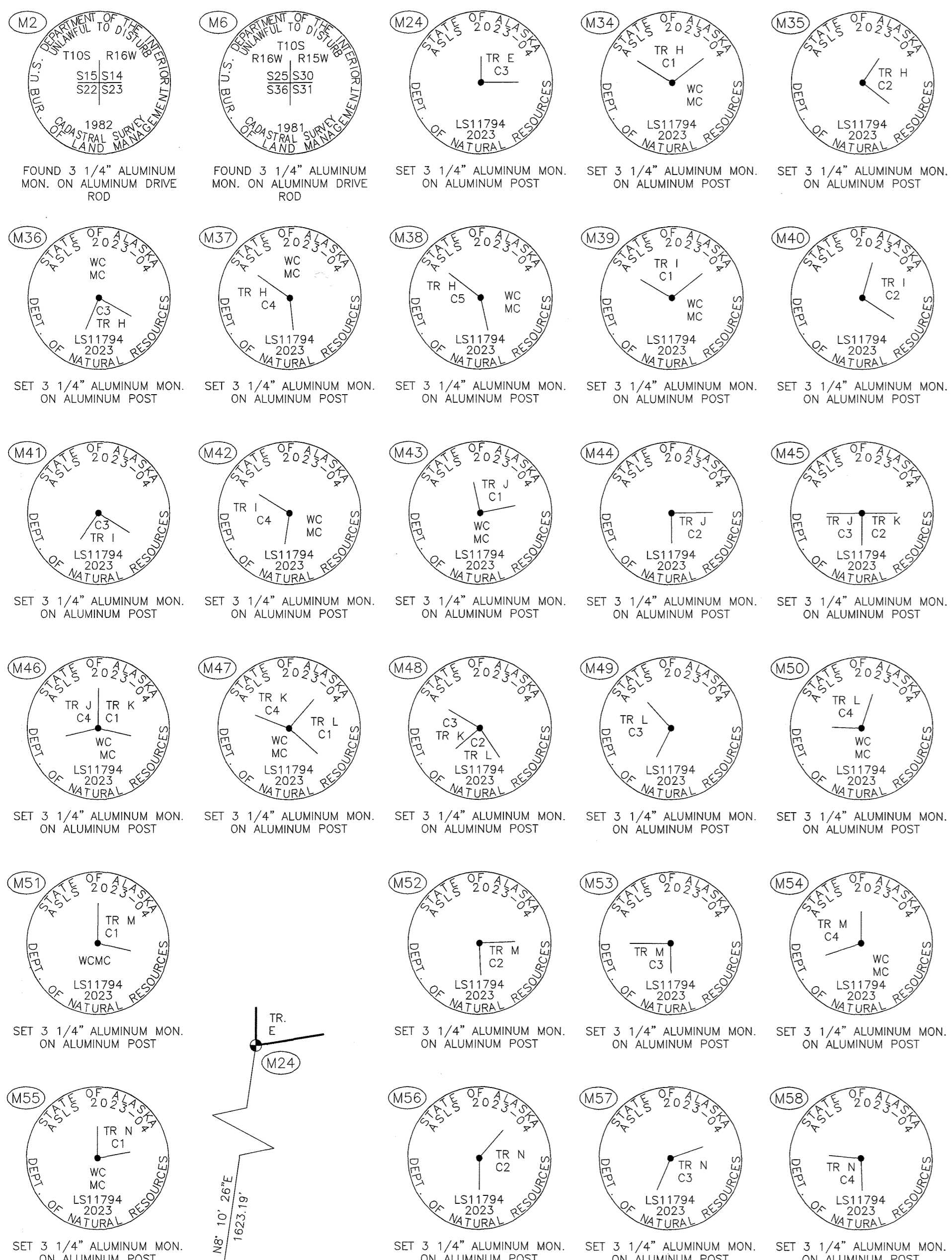
SURVEYOR: MICHAEL R. EWING
RECON LLC
565 W. RECON CIR
PALMER, AK 99645
907-746-3630

STATE OF ALASKA
DEPARTMENT OF NATURAL RESOURCES
DIVISION OF MINING, LAND, AND WATER
ANCHORAGE, ALASKA

ALASKA STATE LAND SURVEY NO. 2023-04
ALMA LAKES REMOTE RECREATIONAL CABIN SITES
CREATING TRACTS A THROUGH N WITHIN SECTIONS 3, 23, 24, 25, AND 26, TOWNSHIP 10 SOUTH, RANGE 16 WEST, FAIRBANKS MERIDIAN, ALASKA FAIRBANKS RECORDING DISTRICT CONTAINING APPROXIMATELY 128.75 ACRES

DRAWN BY: DVD
DATE: 4/16/2024
SCALE: 1"=250'

DNR APPROVAL RECOMMENDED
7/16/2024
STATEWIDE PLATING SUPERVISOR
CHECKED BY: MRE
SHEET: 2 OF 4
FILE NO.: ASLS 20230004



LESSEE CERTIFICATE
I, THE UNDERSIGNED, HEREBY CERTIFY THAT I AM THE LESSEE AS SHOWN HEREON. I HEREBY APPROVE THIS SURVEY AND PLAT.
TRACT I, ADL 421902
Shawn Conatser DATE 6/12/2024
SHAWN CONATSER
PO BOX 81153
FAIRBANKS, AK 99708

NOTARY ACKNOWLEDGEMENT
SUBSCRIBED AND SWORN TO BEFORE ME THIS 12 DAY OF June 2024.
FOR: Shawn Conatser

Catherine Billman
NOTARY PUBLIC FOR ALASKA
MY COMMISSION EXPIRES with office

NOTES (CONTINUED)
20. THERE ARE CURRENTLY NO LESSEES FOR TRACTS H, J, K, AND L.

NAD 1983 GEODETIC COORDINATES TRACTS H & I

MON. ID	LATITUDE	LONGITUDE
M34	64° 01' 59.7" N	150° 39' 29.7" W
M35	64° 02' 02.1" N	150° 39' 40.3" W
M36	64° 02' 06.4" N	150° 39' 36.5" W
M37	64° 02' 06.7" N	150° 39' 25.8" W
M38	64° 02' 04.6" N	150° 39' 16.6" W
M39	64° 01' 45.3" N	150° 39' 37.8" W
M40	64° 01' 46.9" N	150° 39' 46.5" W
M41	64° 01' 54.0" N	150° 39' 44.7" W
M42	64° 01' 52.4" N	150° 39' 36.0" W

NAD 83 GEODETIC COORDINATES, AS SHOWN IN THESE TABLES, ARE ROUNDED TO THE NEAREST TENTH OF A SECOND AND ARE LISTED TO AID LESSEES AND PROPERTY OWNERS IN FINDING THEIR BOUNDARY CORNER MONUMENTS. THESE COORDINATES ARE NOT INTENDED TO BE USED TO ESTABLISH OR RE-ESTABLISH BOUNDARIES. SEE SHEET 1 FOR TYPICAL WITNESS POST AND TYPICAL BEARING TREE TAG DETAILS.

LESSEE CERTIFICATE
I, THE UNDERSIGNED, HEREBY CERTIFY THAT I AM THE LESSEE AS SHOWN HEREON. I HEREBY APPROVE THIS SURVEY AND PLAT.
TRACT M, ADL 421902
David Whitmer DATE 5/29/2024
DAVID WHITMER
1970 DIXON RD
NORTH POLE, AK 99705

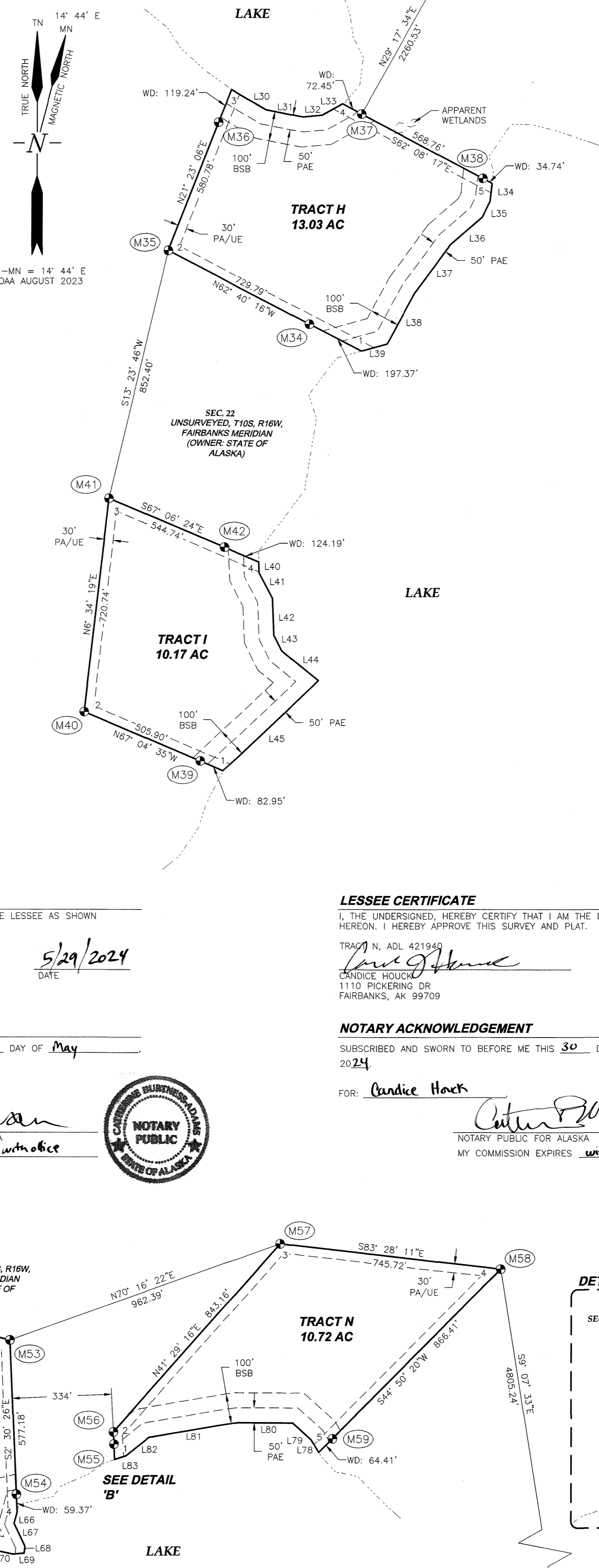
NOTARY ACKNOWLEDGEMENT
SUBSCRIBED AND SWORN TO BEFORE ME THIS 29 DAY OF May 2024.
FOR: David Whitmer

Catherine Billman
NOTARY PUBLIC FOR ALASKA
MY COMMISSION EXPIRES with office

LESSEE CERTIFICATE
I, THE UNDERSIGNED, HEREBY CERTIFY THAT I AM THE LESSEE AS SHOWN HEREON. I HEREBY APPROVE THIS SURVEY AND PLAT.
TRACT N, ADL 421902
Candice Houck DATE 5/30/2024
CANDICE HOUCK
1110 PICKERING DR
FAIRBANKS, AK 99709

NOTARY ACKNOWLEDGEMENT
SUBSCRIBED AND SWORN TO BEFORE ME THIS 30 DAY OF May 2024.
FOR: Candice Houck

Catherine Billman
NOTARY PUBLIC FOR ALASKA
MY COMMISSION EXPIRES with office



MEANDER LINE TABLE

LINE #	DIRECTION	LENGTH
L30	S59° 37' 33"E	132.14'
L31	S78° 50' 00"E	127.64'
L32	N85° 00' 58"E	63.47'
L33	N61° 10' 26"E	79.02'
L34	S6° 24' 34"W	60.72'
L35	S25° 25' 43"W	58.78'
L36	S49° 15' 23"W	142.63'
L37	S36° 35' 49"W	202.70'
L38	S28° 13' 24"W	191.36'
L39	S74° 20' 48"W	89.86'
L40	S2° 31' 44"E	38.89'
L41	S27° 32' 46"E	96.07'
L42	S2° 34' 50"E	124.29'
L43	S26° 38' 59"E	58.56'
L44	S51° 05' 31"E	158.32'
L45	S46° 29' 59"W	440.44'

MEANDER LINE TABLE

LINE #	DIRECTION	LENGTH
L66	S15° 01' 08"W	39.45'
L67	S25° 45' 09"E	84.58'
L68	S5° 17' 14"W	23.58'
L69	S85° 13' 44"W	37.92'
L70	N77° 27' 53"W	73.45'
L71	N69° 41' 39"W	223.45'
L72	N73° 54' 54"W	95.90'
L73	N82° 24' 09"W	69.94'
L74	N75° 13' 45"W	78.74'
L75	N66° 18' 23"W	117.34'
L76	N74° 33' 13"W	145.20'

LINE TABLE

LINE #	DIRECTION	LENGTH
L77	N2° 58' 54"W	93.01'

MEANDER LINE TABLE

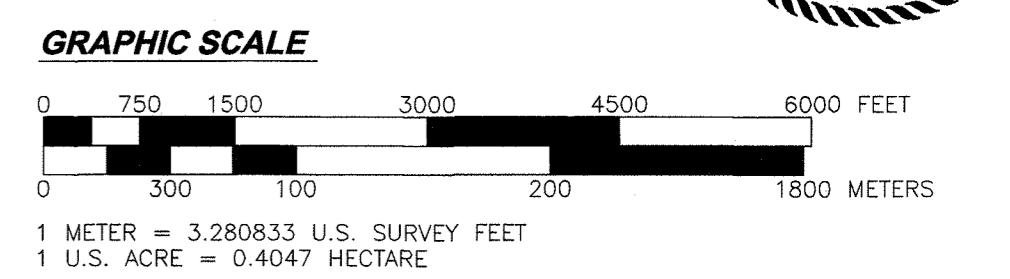
LINE #	DIRECTION	LENGTH
L78	N31° 26' 11"W	49.13'
L79	N47° 42' 31"W	85.10'
L80	N89° 42' 43"W	182.70'
L81	S80° 11' 41"W	303.48'
L82	S51° 01' 24"W	97.10'
L83	S71° 31' 12"W	39.92'

NAD 1983 GEODETIC COORDINATES TRACTS J, K, L, M, & N

MON. ID	LATITUDE	LONGITUDE
M43	64° 01' 30.8" N	150° 37' 48.7" W
M44	64° 01' 38.9" N	150° 37' 51.6" W
M45	64° 01' 38.9" N	150° 37' 38.9" W
M46	64° 01' 31.7" N	150° 37' 37.5" W
M47	64° 01' 30.5" N	150° 37' 24.3" W
M48	64° 01' 34.2" N	150° 37' 17.1" W
M49	64° 01' 28.5" N	150° 37' 07.5" W
M50	64° 01' 24.4" N	150° 37' 16.9" W
M51	64° 01' 22.9" N	150° 36' 14.8" W
M52	64° 01' 28.4" N	150° 36' 14.9" W
M53	64° 01' 26.5" N	150° 35' 57.9" W
M54	64° 01' 21.5" N	150° 35' 57.4" W
M55	64° 01' 23.1" N	150° 35' 50.0" W
M56	64° 01' 23.5" N	150° 35' 50.1" W
M57	64° 01' 29.7" N	150° 35' 37.6" W
M58	64° 01' 28.9" N	150° 35' 20.9" W
M59	64° 01' 23.3" N	150° 35' 33.6" W

NAD 83 GEODETIC COORDINATES, AS SHOWN IN THESE TABLES, ARE ROUNDED TO THE NEAREST TENTH OF A SECOND AND ARE LISTED TO AID LESSEES AND PROPERTY OWNERS IN FINDING THEIR BOUNDARY CORNER MONUMENTS. THESE COORDINATES ARE NOT INTENDED TO BE USED TO ESTABLISH OR RE-ESTABLISH BOUNDARIES. SEE SHEET 1 FOR TYPICAL WITNESS POST AND TYPICAL BEARING TREE TAG DETAILS.

- LEGEND**
- ⊕ FOUND BLM MONUMENT
 - ⊙ SET DNR PRIMARY MONUMENT
 - TRACT BOUNDARY
 - - - SURVEYED TIE
 - - - EASEMENT (ESMT)
 - - - SECTION LINE (PROTRACTED)
 - - - ORDINARY HIGH WATER (OHW)
 - - - APPARENT WETLANDS
 - SLE SECTION LINE EASEMENT
 - PA/UE PUBLIC ACCESS AND UTILITY EASEMENT
 - PAE PUBLIC ACCESS EASEMENT RESERVED TO THE STATE PER AS 38.05.127
 - BSB BUILDING SETBACK FROM ORDINARY HIGH WATER
 - WD WITNESS CORNER MEANDER CORNER DISTANCE
 - (C) COMPUTED DIMENSION
 - (P) BEARING PER BLM PROTRACTOR



MEANDER LINE TABLE

LINE #	DIRECTION	LENGTH
L46	N72° 24' 21"W	79.74'
L47	N48° 48' 35"W	81.86'
L48	N30° 39' 53"W	117.87'
L49	N2° 41' 39"E	111.14'
L50	N16° 03' 43"W	116.89'
L51	N9° 10' 07"W	148.06'
L52	N38° 40' 50"W	110.05'
L53	N36° 16' 47"W	28.94'
L54	N68° 49' 10"W	65.05'
L55	N6° 31' 04"W	20.79'

MEANDER LINE TABLE

LINE #	DIRECTION	LENGTH
L56	N55° 51' 54"W	128.72'
L57	N88° 54' 34"W	126.48'
L58	S73° 45' 16"W	113.59'
L59	S84° 54' 11"W	78.23'
L60	N84° 17' 27"W	42.74'
L61	N84° 17' 27"W	72.00'
L62	S81° 48' 17"W	136.15'
L63	N88° 34' 07"W	109.33'
L64	S73° 02' 08"W	69.75'
L65	S60° 30' 26"W	132.09'

DATE OF SURVEY: BEGINNING: 07/28/2023 ENDING: 08/08/2023

SURVEYOR: MICHAEL R. EWING RECON LLC AECN #922 565 W RECON CIR PALMER, AK 99645 907-746-3630

STATE OF ALASKA
DEPARTMENT OF NATURAL RESOURCES
DIVISION OF MINING, LAND, AND WATER
ANCHORAGE, ALASKA

ALASKA STATE LAND SURVEY NO. 2023-04

ALMA LAKES REMOTE RECREATIONAL CABIN SITES

CREATING TRACTS A THROUGH N WITHIN SECTIONS 3, 22, 23, 24, 25, AND 26, TOWNSHIP 10 SOUTH, RANGE 16 WEST FAIRBANKS MERIDIAN, ALASKA FAIRBANKS RECORDING DISTRICT CONTAINING APPROXIMATELY 128.75 ACRES

DRAWN BY: DVD DATE: 4/16/2024 SCALE: 1"=250'

DNR APPROVAL RECOMMENDED
Kevin Bow 7/16/2024
STATEWIDE PLATTING SUPERVISOR DATE

CHECKED BY: SHEET: 3 OF 4 FILE NO. ASLS 20230004

MONUMENT ACCESSORY TABLE				
MON. ID	BEARING OBJECT	BEARING	DISTANCE	NOTES
M1	24" SPRUCE	N 71° W	18.2'	RECORD 92-78/ VERIFIED
	18" BIRCH	N 37° W	19.4'	RECORD 92-78/ VERIFIED, RECORD STATES SPRUCE
M2	3" SPRUCE	N 64 1/2° E	61.4'	RECORD BLM/ VERIFIED
	5" SPRUCE	S 42 1/2° E	70.3'	RECORD BLM/ VERIFIED
	9" SPRUCE	S 43° W	56.8'	RECORD BLM/ VERIFIED
	4" BIRCH	N 51 1/2° W	41.6'	RECORD BLM/ VERIFIED
M3	RM	N 62° E	20.0'	NEW
	8" SPRUCE	S 33° W	15.4'	NEW
	7" SPRUCE	N 75° W	13.6'	NEW
M4	4" SPRUCE	N 46° E	36.2'	NEW
	6" SPRUCE	S 26° W	26.2'	NEW
	6" SPRUCE	N 54° W	43.4'	NEW
ORIGINAL BEARING TREES BURNED & FALLEN				
M5	5" SPRUCE	N 65 1/2° E	48.8'	RECORD 2007-21/ VERIFIED
	4" SPRUCE	S 53 1/2° E	8.2'	RECORD 2007-21/ VERIFIED
	4" SPRUCE	S 20° E	35.0'	RECORD 2007-21/ VERIFIED
	4" SPRUCE	S 57 1/2° W	18.8'	RECORD 2007-21/ VERIFIED
	6" SPRUCE	N 33 1/2° W	35.0'	RECORD 2007-21/ VERIFIED
RECORD S61°W 17.00' (2007-21) MISSING				
M6	7" BIRCH	N 37 1/2° E	24.4'	RECORD BLM/ VERIFIED
	4" SPRUCE	S 30° E	6.3'	RECORD BLM/ VERIFIED
	10" BIRCH	S 27° W	22.4'	RECORD BLM/ VERIFIED
	10" BIRCH	N 58° W	32.3'	RECORD BLM/ VERIFIED
M7	4" BIRCH	N 40° E	33.5'	NEW
	4" SPRUCE	S 60° W	13.2'	NEW
	5" SPRUCE	N 26° W	28.0'	NEW
M8	8" BIRCH	S 48° W	28.4'	NEW
	8" SPRUCE	N 70° W	44.1'	NEW
	8" BIRCH	N 08° W	30.6'	NEW
M9	RM1	SOUTH	20.0'	SET
	RM2	S 89° W	20.0'	SET
M10	RM1	S 36° E	20.0'	SET
	RM2	S 89° W	20.0'	SET
M11	RM1	S 21° W	20.0'	SET
	RM2	N 34° W	20.0'	SET
M12	RM1	S 09° E	20.0'	SET
	RM2	WEST	20.0'	SET
M13	6" BIRCH	N 76° E	30.3'	NEW
	6" SPRUCE	S 10° W	21.4'	NEW
	10" BIRCH	N 14° W	17.4'	NEW
M14	9" SPRUCE	N 80° E	16.5'	NEW
	6" SPRUCE	S 80° W	11.6'	NEW
	6" SPRUCE	N 08° W	21.0'	NEW
M15	9" SPRUCE	S 17° E	34.9'	NEW
	7" BIRCH	S 83° W	18.2'	NEW
	8" BIRCH	N 07° W	16.4'	NEW
M16	6" SPRUCE	S 73° E	11.7'	NEW
	7" SPRUCE	S 23° E	14.5'	NEW
	9" SPRUCE	S 85° W	19.9'	NEW
M17	9" TAMARACK	N 53° E	10.8'	NEW
	8" SPRUCE	S 48° E	21.7'	NEW
	9" TAMARACK	N 75° W	7.4'	NEW
M18	13" SPRUCE	N 16° E	30.2'	NEW
	7" SPRUCE	S 06° E	19.6'	NEW
M19	7" SPRUCE	N 54° W	39.8'	NEW
	6" SPRUCE	N 73° E	30.2'	NEW
	4" SPRUCE	N 40° W	17.1'	NEW

SEE SHEET 1 FOR BEARING TREE TAG AND REFERENCE MONUMENT (RM) DETAIL.

MONUMENT ACCESSORY TABLE				
MON. ID	BEARING OBJECT	BEARING	DISTANCE	NOTES
M20	10" SPRUCE	N 52° E	27.5'	NEW
	11" BIRCH	S 35° W	27.2'	NEW
	13" SPRUCE	N 20° W	9.0'	NEW
M21	9" SPRUCE	N 30° E	34.0'	NEW
	7" SPRUCE	S 57° W	29.1'	NEW
	8" SPRUCE	N 46° W	9.0'	NEW
M22	3" SPRUCE	N 73° E	13.7'	NEW
	3" SPRUCE	S 36° E	17.2'	NEW
	4" SPRUCE	S 80° W	23.8'	NEW
M23	5" BIRCH	N 26° E	13.4'	NEW
	11" SPRUCE	S 05° E	22.8'	NEW
	7" SPRUCE	N 85° W	31.3'	NEW
M24	10" SPRUCE	N 82° E	27.7'	NEW
	8" SPRUCE	S 32° W	7.5'	NEW
	9" BIRCH	N 18° W	40.2'	NEW
M25	8" BIRCH	N 68° E	24.5'	NEW
	9" BIRCH	S 24° E	21.5'	NEW
	5" SPRUCE	N 18° W	34.2'	NEW
M26	4" TAMARACK	N 54° E	16.9'	NEW
	5" SPRUCE	S 26° W	7.8'	NEW
	4" SPRUCE	N 54° W	13.0'	NEW
M27	3" SPRUCE	N 33° E	25.7'	NEW
	2" SPRUCE	S 32° W	30.5'	NEW
	3" SPRUCE	N 45° W	22.9'	NEW
M28	11" SPRUCE	S 24° E	10.6'	NEW
	5" SPRUCE	S 82° W	11.8'	NEW
	5" SPRUCE	N 03° W	12.4'	NEW
M29	3" SPRUCE	S 70° E	22.5'	NEW
	3" SPRUCE	S 45° W	21.3'	NEW
	3" SPRUCE	N 48° W	8.3'	NEW
M30	RM1	S 86° E	12.0'	SET
	RM2	S 09° W	12.0'	SET
M31	RM1	N 84° E	20.0'	SET
	RM2	S 22° W	20.0'	SET
M32	2" SPRUCE	S 89° E	19.7'	NEW
	3" SPRUCE	S 77° W	29.0'	NEW
M33	3" SPRUCE	N 27° W	27.9'	NEW
	5" SPRUCE	N 77° E	11.8'	NEW
	4" SPRUCE	S 81° W	14.6'	NEW
M34	6" SPRUCE	N 50° W	7.0'	NEW
	5" SPRUCE	N 23° E	6.7'	NEW
	6" SPRUCE	S 74° E	11.5'	NEW
M35	4" SPRUCE	S 56° W	16.7'	NEW
	3" SPRUCE	S 01° E	22.1'	NEW
	3" SPRUCE	S 88° W	14.4'	NEW
M36	5" SPRUCE	N 07° W	22.2'	NEW
	8" SPRUCE	N 18° E	10.4'	NEW
	6" SPRUCE	S 12° E	32.1'	NEW
M37	10" SPRUCE	S 78° W	16.7'	NEW
	6" SPRUCE	N 53° E	31.2'	NEW
	4" SPRUCE	S 52° E	23.7'	NEW
M38	7" SPRUCE	N 13° W	17.8'	NEW
	7" SPRUCE	NORTH	23.8'	NEW
	7" SPRUCE	S 10° W	14.3'	NEW
M39	8" BIRCH	N 42° W	12.9'	NEW
	5" SPRUCE	N 23° E	20.5'	NEW
	7" SPRUCE	S 62° W	21.9'	NEW
M40	7" SPRUCE	N 48° W	28.1'	NEW
	2" SPRUCE	S 84° E	9.1'	NEW
	3" SPRUCE	S 89° W	17.0'	NEW
M41	3" SPRUCE	N 07° W	12.9'	NEW
	3" SPRUCE	N 88° E	26.9'	NEW
M42	4" SPRUCE	S 02° E	19.3'	NEW
	2" SPRUCE	WEST	15.6'	NEW
	8" SPRUCE	N 43° E	14.5'	NEW
M43	7" SPRUCE	S 70° W	34.3'	NEW
	10" SPRUCE	N 43° W	12.2'	NEW
	12" SPRUCE	S 70° E	18.5'	NEW
M44	8" SPRUCE	S 08° E	15.6'	NEW
	7" SPRUCE	N 64° W	6.5'	NEW
	3" SPRUCE	N 23° E	10.4'	NEW
M45	4" SPRUCE	S 13° E	15.7'	NEW
	3" SPRUCE	N 61° W	21.9'	NEW
	6" SPRUCE	N 62° E	18.4'	NEW
M46	6" SPRUCE	S 26° W	20.1'	NEW
	3" SPRUCE	N 40° W	23.3'	NEW
	8" SPRUCE	N 54° E	12.3'	NEW
M47	8" SPRUCE	S 19° W	14.9'	NEW
	7" SPRUCE	N 37° W	17.9'	NEW
	4" BIRCH	N 27° E	16.9'	NEW
M48	5" SPRUCE	N 71° E	23.3'	NEW
	6" SPRUCE	S 14° E	27.3'	NEW
	3" SPRUCE	N 13° E	20.7'	NEW
M49	3" SPRUCE	S 26° E	18.3'	NEW
	3" SPRUCE	S 80° W	8.7'	NEW
	5" SPRUCE	N 65° E	9.0'	NEW
M50	6" SPRUCE	S 16° E	28.8'	NEW
	5" SPRUCE	N 84° W	19.5'	NEW
	5" SPRUCE	N 06° E	18.4'	NEW
M51	7" SPRUCE	S 53° E	28.0'	NEW
	5" SPRUCE	WEST	17.1'	NEW
	8" SPRUCE	S 85° E	24.3'	NEW
M52	7" SPRUCE	S 23° E	8.8'	NEW
	7" SPRUCE	N 30° W	29.4'	NEW
	3" SPRUCE	S 88° E	42.7'	NEW
M53	3" SPRUCE	S 04° E	20.9'	NEW
	3" SPRUCE	N 18° W	21.2'	NEW
	2" SPRUCE	N 38° E	11.5'	NEW
M54	4" SPRUCE	S 42° E	26.3'	NEW
	3" SPRUCE	S 38° W	17.1'	NEW
	3" SPRUCE	N 66° E	13.7'	NEW
M55	4" SPRUCE	SOUTH	12.6'	NEW
	4" SPRUCE	N 78° W	28.6'	NEW
	5" SPRUCE	N 79° E	11.0'	NEW
M56	4" SPRUCE	S 17° E	20.7'	NEW
	6" SPRUCE	N 31° W	26.9'	NEW
	6" SPRUCE	N 61° E	12.2'	NEW
M57	7" SPRUCE	S 56° E	13.3'	NEW
	6" SPRUCE	S 81° W	9.0'	NEW
	3" SPRUCE	N 23° E	18.9'	NEW
M58	2" SPRUCE	S 61° E	18.5'	NEW
	3" SPRUCE	S 78° W	16.9'	NEW
	3" SPRUCE	S 32° W	32.8'	NEW
M59	4" SPRUCE	N 78° W	71.9'	NEW
	4" SPRUCE	N 04° W	45.0'	NEW
	6" BIRCH	N 23° E	24.9'	NEW
M41	7" SPRUCE	S 26° W	10.8'	NEW
	7" BIRCH	N 54° W	12.3'	NEW

2024-59
Plat #
Fairbanks
Rec Dist
Date 08/28/2024
Time 12:31p.M



DATE OF SURVEY: BEGINNING: 07/28/2023 ENDING: 08/08/2023	SURVEYOR: MICHAEL R. EWING RECON LLC AECL #922 565 W RECON CIR PALMER, AK 99645 907-746-3630
STATE OF ALASKA DEPARTMENT OF NATURAL RESOURCES DIVISION OF MINING, LAND, AND WATER ANCHORAGE, ALASKA	
ALASKA STATE LAND SURVEY NO. 2023-04	
ALMA LAKES REMOTE RECREATIONAL CABIN SITES	
CREATING TRACTS A THROUGH N WITHIN SECTIONS 3, 22, 24, 25, AND 26, TOWNSHIP 10 SOUTH, RANGE 16 WEST FAIRBANKS MERIDIAN, ALASKA FAIRBANKS RECORDING DISTRICT CONTAINING APPROXIMATELY 128.75 ACRES	
DRAWN BY: DVD DATE: 4/16/2024	DNR APPROVAL RECOMMENDED Kevin Bow 7/16/2024 STATEWIDE PLATTING SUPERVISOR DATE
SCALE: N/A	CHECKED BY: MRE SHEET: 4 OF 4 FILE NO.: ASLS 20230004