

KUPREANOF SHORES SUBDIVISION INDEX SHEET

TIDAL INFORMATION - VIEKODA BAY

DATE OF TIDAL OBSERVATIONS: OCTOBER 17, 2020
TIME OF TIDAL OBSERVATIONS: 14:43 - 15:34 (AKST)
LOCATION OF OBSERVATION:
LATITUDE: 57° 58' 33.62" N. (NAD 83)
LONGITUDE: 153° 17' 37.55" W. (NAD 83)
OBSERVED HIGH WATER ELEVATION: 14.88 FT. (NAVD 88)
TIME OF OBSERVED HIGH WATER ELEVATION: 15:19 (AKST)
PUBLISHED TIDE PREDICTION FOR VIEKODA BAY
DATE: OCTOBER 17, 2020 TIME: 15:17 (AKST)
HIGH WATER PREDICTION: +18.41 FROM MLLW
AVERAGE MEAN HIGH WATER: MLLW +13.75 (BASED ON AVERAGE OF ALL
HIGH WATER PREDICTIONS FOR VIEKODA BAY FOR 2020 AND 2021)
COMPUTED ELEVATION OF MEAN LOW LOW WATER: -3.53 FT.
COMPUTED ELEVATION OF MEAN HIGH WATER: 10.22 FT.

NOTES

- THIS SURVEY WAS ACCOMPLISHED IN ACCORDANCE WITH AS 38.04.045, GSC 836, AND SSI ASLS No. 2019-19.
- BEARINGS ARE BASED ON HIGH PRECISION GLOBAL NAVIGATION SATELLITE SYSTEM TECHNOLOGY IN THE NAD 83 CORNERS EPOCH 2010.0000 DATUM USING TRIMBLE RECEIVERS, DIFFERENTIALLY CORRECTED AND PROCESSED USING TRIMBLE BUSINESS CENTER VERSION 5.10 SOFTWARE. LOCAL PLANE BEARINGS ARE ORIENTED TO TRUE GEODETIC NORTH AT THE CN 1/16 CORNER OF SECTION 32, CONCURRENTLY IDENTIFIED AS CORNER NO. 5 OF TRACT B, ASLS 91-12 AND DESIGNATED AS MONUMENT EA OF THIS PLAT. DISTANCES SHOWN ARE REDUCED TO HORIZONTAL FIELD DISTANCES.
- THE SHOWN FOUND NAD 83 (2011) COORDINATES ARE BASED ON AN OPUS SOLUTION (EPOCH: 2010.0000) FOR THE C-N 1/16TH SECTION CORNER OF SECTION 32, TOWNSHIP 25 SOUTH, RANGE 24 WEST ALSO DESIGNATED AS CORNER 5, TRACT B, ALASKA STATE LAND SURVEY NO. 91-12. (PID#BBG219) AND MONUMENT EA OF THIS PLAT. THE COORDINATES WERE CONSTRAINED TO THE NATIONAL SPATIAL REFERENCE SYSTEM USING THE CORNERS REFERENCE STATIONS: SHUYAKISSPAK2006 (PID# DL7665), CAPE_GULL_AK2008 (PID# DL7659), AND QUARTZ_CRAKAK2005 (PID# DL7662). THESE NAD 83 COORDINATES WERE CONVERTED TO NAD 27 COORDINATES USING THE NGS/NOAA NCAT PROGRAM VERSION 2.0.1.
- THE ERROR OF CLOSURE OF THIS SURVEY DOES NOT EXCEED 1:5000, AND/OR CORNER POSITIONS HAVE A RELATIVE POSITIONAL ACCURACY AT THE 95 PERCENT CONFIDENCE LEVEL OF 0.13 FEET PLUS 100 PPM.
- ALL PARCELS OF LAND OWNED BY THE STATE OF ALASKA, LOCATED WITHIN 50.00 FEET OF, OR BISECTED BY A SURVEYED OR PROTRACTED SECTION LINE, ARE SUBJECT TO A 50-FOOT (50') EASEMENT ON EACH SIDE OF THE SECTION LINE WHICH IS RESERVED TO THE STATE OF ALASKA FOR PUBLIC HIGHWAYS UNDER A.S. 19.10.010.
- DIAGONALLY HATCHED AREA INDICATES PORTIONS OF THE SECTION-LINE EASEMENTS BEING VACATED WITHIN SECTIONS 26, 27, 35, AND 36, TOWNSHIP 25 SOUTH, RANGE 25 WEST, SEWARD MERIDIAN. IT IS NOT THE INTENT OF THIS PLAT TO VACATE ANY OTHER DEDICATED PUBLIC RIGHTS-OF-WAY OR EASEMENTS.
- THIS SECTION-LINE EASEMENT VACATION IS IN COMPLIANCE WITH THE FINAL DECISION EV-3-337 APPROVED MARCH 7, 2023.
- THE ALTERNATE ROUTE IN ACCORDANCE WITH 11 AAC 51.065 IS VIA THE 100-FOOT PUBLIC ACCESS EASEMENT BEING DEDICATED BETWEEN LOTS 12 AND 13 AND THE ADJUTING & ADJACENT UNDEVELOPED STATE GENERAL USE DESIGNATED LANDS.
- IN ACCORDANCE WITH 11 AAC 53.150(d)(2) THE PROTRACTED NAD 27 COORDINATES OF CONTROLLING UNSURVEYED RECTANGULAR CORNERS WERE COMPUTED FROM PROTRACTION DIAGRAMS S23-L 1 & S23-12, APPROVED BY BLM SEPTEMBER 19, 1960 AND CONVERTED TO NAD 83. THESE NAD 83 GROUND POSITIONS, AS WELL AS APPLICABLE ALIQUOT PART BOUNDARIES, WERE CONTROLLED & ESTABLISHED IN REFERENCE OF THE BASIS OF COORDINATES NOTED ABOVE IN NOTE 3 AND ARE NOT DIRECTLY CORRELATED TO ANY RECORD OR FOUND RECTANGULAR MONUMENT POSITION.
- THE MEAN HIGH WATER ELEVATIONS FOR KUPREANOF STRAIT AND VIEKODA BAY WERE DETERMINED BY TIME COORDINATED TIDAL OBSERVATIONS ON OCTOBER 15-17, 2020 AS EXTRAPOLATED FROM THE NOAA PUBLICATION FOR THE PREDICTIONS OF HIGH AND LOW WATERS FOR 2020 FOR DRY SPRUCE ISLAND AND VIEKODA BAY REFERENCED TO MLLW. THE HIGH TIDE PREDICTIONS FOR BOTH 2020 AND 2021 WERE AVERAGED TO DETERMINE THE DIFFERENCE BETWEEN MLLW AND MHW FOR EACH LOCATION.
- THERE IS A 50-FOOT WIDE BUILDING SETBACK FROM CREEKS, STREAMS, AND APPARENT WETLANDS.
- PARCELS MAY CONTAIN WETLANDS. A U.S. ARMY CORPS OF ENGINEERS WETLAND PERMIT MAY BE REQUIRED TO DEVELOP ANY WETLAND AREAS.
- THE AREA LYING DIRECTLY IN FRONT OF EACH GROUP OF ASLS 2019-19 LOTS, BETWEEN THEIR SEAWARD BOUNDARY AND THE MEAN HIGH WATER LINE OF KUPREANOF STRAIT OR VIEKODA BAY, AS APPLICABLE, IS HEREBY RESERVED AS A PUBLIC ACCESS EASEMENT IN ACCORDANCE WITH AS 38.05.127. AT THE TIME OF THIS SURVEY, THIS AREA IS A MINIMUM OF 100-FOET WIDE.
- THE CORNER OF SECTIONS 5, 6, 31, AND 32, TOWNSHIPS 25 AND 26 SOUTH, RANGE 24 WEST, DESIGNATED AS MONUMENT VA OF THIS PLAT, WAS RESET THIS SURVEY. AT THE CORNER LOCATION, BASE WITH MAGNET WAS FOUND 2 FT. BELOW GROUND. ORIGINAL MONUMENT WAS FOUND OUT OF THE GROUND APPROXIMATELY 100 FT. DOWNHILL OF THE CORNER MONUMENT WAS RESET ATOP THE ORIGINAL BASE IN AGREEMENT WITH THE EXISTING REFERENCE MONUMENTS AS DESCRIBED ON SHEET 4 OF THIS PLAT.

TIDAL INFORMATION - KUPREANOF STRAIT

DATE OF TIDAL OBSERVATIONS: OCTOBER 15, 2020
TIME OF TIDAL OBSERVATIONS: 14:00 - 14:30 (AKST)
LOCATION OF OBSERVATION:
LATITUDE: 57° 57' 49.13" N. (NAD 83)
LONGITUDE: 153° 09' 05.21" W. (NAD 83)
OBSERVED HIGH WATER ELEVATION: 12.00 FT. (NAVD 88)
TIME OF OBSERVED HIGH WATER ELEVATION: 14:17 (AKST)
PUBLISHED TIDE PREDICTION FOR DRY SPRUCE ISLAND
DATE: OCTOBER 15, 2020 TIME: 14:15
HIGH WATER PREDICTION: +16.08 FROM MLLW
AVERAGE MEAN HIGH WATER: MLLW +13.23 (BASED ON AVERAGE OF ALL
HIGH WATER PREDICTIONS FOR DRY SPRUCE ISLAND FOR 2020 AND 2021)
COMPUTED ELEVATION OF MEAN LOW LOW WATER: -4.08 FT.
COMPUTED ELEVATION OF MEAN HIGH WATER: 9.15 FT.

SHEET INDEX

PARCELS	SHEET
LOTS 1-8	2
LOTS 9-17	3
LOTS 18-22	4
LOTS 23 & 24	5
LOTS 25-28	6

BASIS OF COORDINATES (OPUS) - (SEE NOTE 3)

NAD 83: Lot 1: 57° 58' 12.10094" N.
Long. 153° 12' 22.87033" W.
NAD 27: Lot 1: 57° 58' 14.68876" N.
Long. 153° 12' 14.85713" W.
RECORD COORDINATES PER PROTRACTION
NAD 27: Lot 1: 57° 58' 14.670" N.
Long. 153° 12' 14.798" W.

KUPREANOF STRAIT

GEODETIC TIES TO BASIS OF COORDINATES (EA)

LOT	COR	MON	GEODETIC MEAN BEARING	DISTANCE
1	NE	D	S. 69° 59' 21" E.	19,284.37'
9	NE	K	S. 79° 44' 50" E.	16,171.40'
18	NE	U	N. 80° 20' 08" E.	12,241.95'
23	SE	CA	S. 56° 23' 27" E.	2,380.90'
25	SW	LA	N. 63° 29' 12" W.	5,908.71'
27	SW	RA	N. 69° 27' 56" W.	11,294.45'
-	SEC.	VA	N. 33° 33' 22" E.	4,755.68'

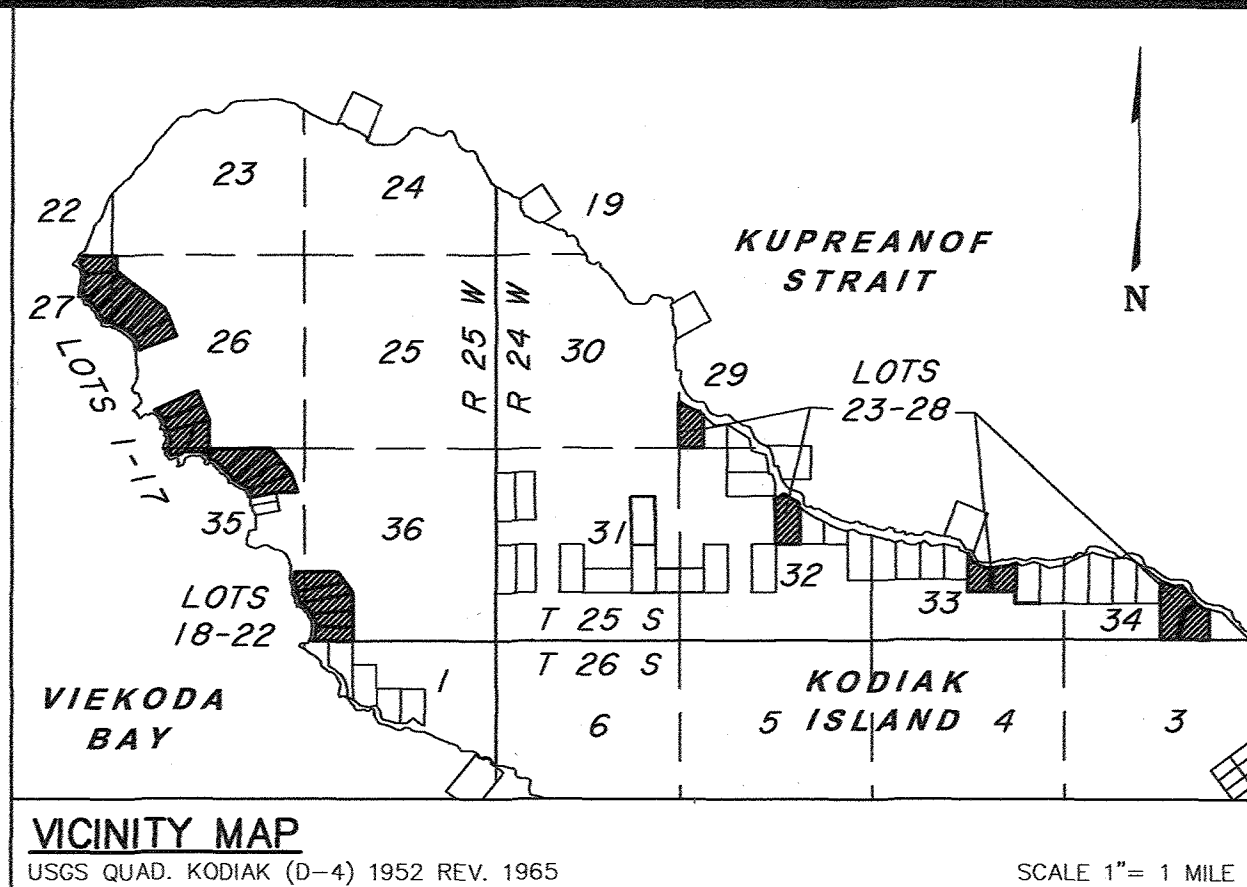
KODIAK ISLAND BOROUGH PLANNING AND ZONING COMMISSION

RECEIVED: 12/14/23 APPROVED: 12/14/23
CHAIR: L. Scholt DATE: 12/14/23
THIS IS TO CERTIFY THAT THE WITHIN PLAT IS DULY APPROVED IN ACCORDANCE WITH THE KODIAK ISLAND BOROUGH CODE THIS 14 DAY OF December, 2023.
Borough Manager: Anna Williams DATE: 12/15/23
Borough Clerk: Nora M. Quinn DATE: 12/15/23
Community Development Department Director: Chris French DATE: 12/14/23

SURVEYOR'S CERTIFICATE

I HEREBY CERTIFY THAT I AM PROPERLY REGISTERED AND LICENSED TO PRACTICE LAND SURVEYING IN THE STATE OF ALASKA, THAT THIS PLAT REPRESENTS A SURVEY MADE BY ME OR UNDER MY DIRECT SUPERVISION, THAT THE MONUMENTS SHOWN HEREON ACTUALLY EXIST AS DESCRIBED, AND THAT ALL DIMENSIONS AND OTHER DETAILS ARE CORRECT.

DATE: 12/6/23 Lindsey Sue Vaughan
REGISTERED LAND SURVEYOR NO. LS-12318



CERTIFICATE OF OWNERSHIP AND DEDICATION

I, THE UNDERSIGNED, HEREBY CERTIFY THAT I AM THE DIRECTOR, DIVISION OF MINING, LAND AND WATER AND THAT THE STATE OF ALASKA IS THE OWNER OF ASLS 2019-19, AS SHOWN HEREON. I HEREBY APPROVE THIS SURVEY AND PLAT FOR THE STATE OF ALASKA, AND DEDICATE OR RESERVE FOR PUBLIC OR PRIVATE USE AS NOTED, ALL EASEMENTS, PUBLIC UTILITY AREAS, AND RIGHTS-OF-WAY AS SHOWN AND DESCRIBED HEREON.

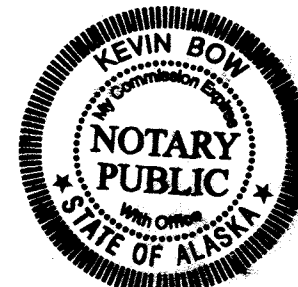
DATE: 12/6/2023 Lindsey M. Savelle
DIRECTOR, DIVISION OF MINING, LAND AND WATER

NOTARY'S ACKNOWLEDGEMENT

SUBSCRIBED AND SWORN TO BEFORE ME THIS 14th DAY OF December, 2023.

BY: Gwendolyn Gevelis

Kevin Bone
NOTARY PUBLIC FOR ALASKA
MY COMMISSION EXPIRES With office



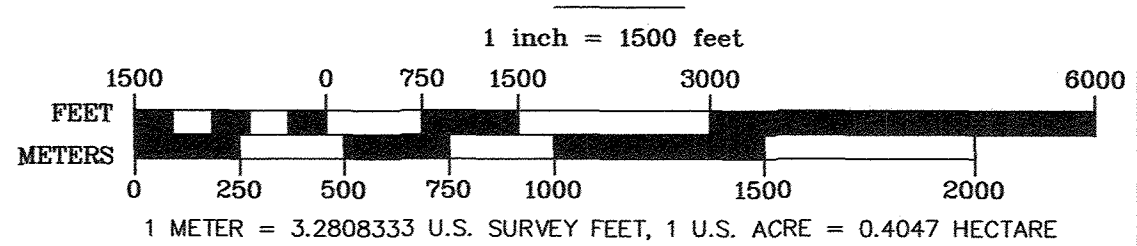
CERTIFICATION OF PAYMENT OF TAXES

I HEREBY CERTIFY THAT, ACCORDING TO THE RECORDS OF THE KODIAK ISLAND BOROUGH, ALL TAXES ASSESSED AND DUE AGAINST SAID LAND AND IN FAVOR OF THE KODIAK ISLAND BOROUGH, ARE PAID IN FULL.

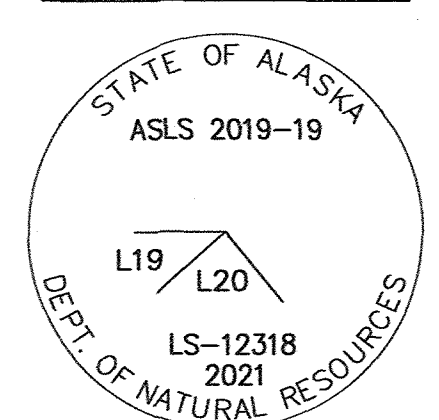
DATED AT KODIAK, ALASKA THIS 15 DAY OF December, 2023.

Nora M. Quinn
KODIAK ISLAND BOROUGH CLERK

SCALE



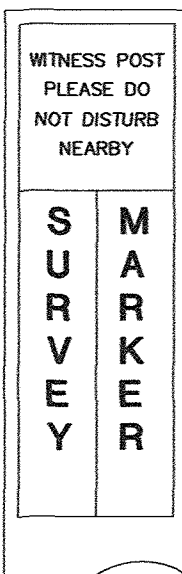
TYPICAL PRIMARY MONUMENT SET THIS SURVEY



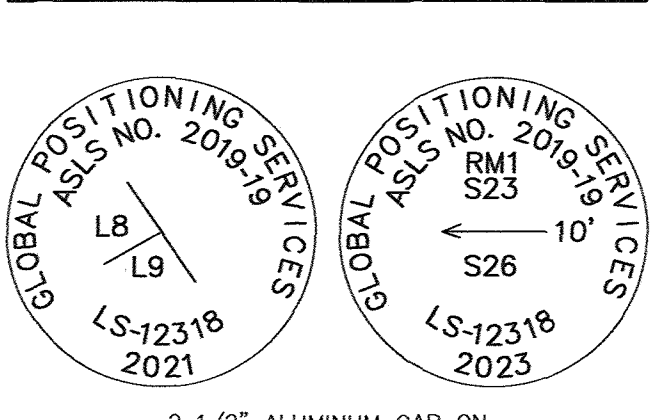
3 1/4" ALUMINUM DISK ON A 2 1/2" ALUMINUM POST, 30" LONG, WITH A COW MAGNET AT THE BASE, AND A CARBONITE WITNESS POST SET IN A CARDINAL DIRECTION

TYPICAL WITNESS POST

AN ORANGE FIBERGLASS REINFORCED CARBONITE POST, 6 FT. LONG SET AT A CARDINAL DIRECTION WITHIN 1 FT. OF ALL PRIMARY MONUMENTS



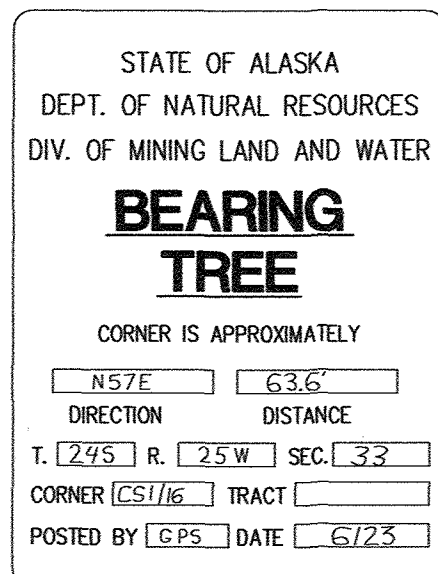
TYPICAL SECONDARY & REFERENCE MONUMENTS SET THIS SURVEY



2 1/2" ALUMINUM CAP ON A 5/8" REBAR, 30" LONG, DRIVEN 27"-28" IN THE GROUND, WITH A 1 1/2" X 1/2" X 4" WOODEN LATH, SET NORTH WITHIN 1 FT. OF THE COR.

TYPICAL BEARING TREE TAG

A YELLOW 4 1/2" X 6" ALUMINUM TAG SET AT BREAST HEIGHT TREES ARE NOT SCRIBED



LEGEND:

- BLM MONUMENT RECOVERED
- PRIMARY MONUMENT RECOVERED
- PRIMARY MONUMENT SET THIS SURVEY
- SECONDARY MONUMENT SET THIS SURVEY
- PROTRACTED SECTION LINES
- SURVEYED LINES
- EASEMENT
- TIE
- ADDITIONAL MEANDERS
- MONUMENT IDENTIFIER
- RECORD INFORMATION
- MEAN HIGH WATER LINE
- POINT ON LINE
- SECTION-LINE EASEMENT VACATED BY THIS PLAT (REFER TO SHEETS 2, 3, & 4)



(B)	T25S R25W LS-12318 2023	SET AN ALUM. POST, 2 1/2 INS. DIAM. X 28 INS. LONG, 26 INS. IN THE GROUND, WITH AN ALUMINUM CAP, 3 1/4 INS. DIAM., MARKED AS SHOWN, WITH A MAGNET IN A CLEAR PLASTIC CASE DEPOSITED AT THE BASE OF THE MONUMENT CARSONITE WITNESS POST TO THE NORTH.
(C)	ASLS 2019-19 T25S R25W S22 S23 S27 S26 LS-12318 2023	SET AN ALUM. POST, 2 1/2 INS. DIAM. X 28 INS. LONG, 26 INS. IN THE GROUND, WITH AN ALUMINUM CAP, 3 1/4 INS. DIAM., MARKED AS SHOWN, WITH A MAGNET IN A CLEAR PLASTIC CASE DEPOSITED AT THE BASE OF THE MONUMENT CARSONITE WITNESS POST TO THE NORTH. RM 1 2 1/2" ALUM. CAP ON 5/8" REBAR NORTH, 10.00 FT. RM 2 2 1/2" ALUM. CAP ON 5/8" REBAR SOUTH, 10.00 FT.
(D)	ASLS 2019-19 L1 LS-12318 2023	SET AN ALUM. POST, 2 1/2 INS. DIAM. X 28 INS. LONG, 26 INS. IN THE GROUND, WITH AN ALUMINUM CAP, 3 1/4 INS. DIAM., MARKED AS SHOWN, WITH A MAGNET IN A CLEAR PLASTIC CASE DEPOSITED AT THE BASE OF THE MONUMENT CARSONITE WITNESS POST TO THE NORTH.
(E)	ASLS 2019-19 L1 L2 LS-12318 2023	SET AN ALUM. POST, 2 1/2 INS. DIAM. X 28 INS. LONG, 25 INS. IN THE GROUND, WITH AN ALUMINUM CAP, 3 1/4 INS. DIAM., MARKED AS SHOWN, WITH A MAGNET IN A CLEAR PLASTIC CASE DEPOSITED AT THE BASE OF THE MONUMENT CARSONITE WITNESS POST TO THE NORTH.
(F)	ASLS 2019-19 L4 L5 LS-12318 2023	SET AN ALUM. POST, 2 1/2 INS. DIAM. X 28 INS. LONG, 25 INS. IN THE GROUND, WITH AN ALUMINUM CAP, 3 1/4 INS. DIAM., MARKED AS SHOWN, WITH A MAGNET IN A CLEAR PLASTIC CASE DEPOSITED AT THE BASE OF THE MONUMENT CARSONITE WITNESS POST TO THE NORTH.
(G)	ASLS 2019-19 L7 LS-12318 2023	SET AN ALUM. POST, 2 1/2 INS. DIAM. X 28 INS. LONG, 26 INS. IN THE GROUND, WITH AN ALUMINUM CAP, 3 1/4 INS. DIAM., MARKED AS SHOWN, WITH A MAGNET IN A CLEAR PLASTIC CASE DEPOSITED AT THE BASE OF THE MONUMENT CARSONITE WITNESS POST TO THE NORTH.
(H)	ASLS 2019-19 L8 LS-12318 2023	SET AN ALUM. POST, 2 1/2 INS. DIAM. X 28 INS. LONG, 25 INS. IN THE GROUND, WITH AN ALUMINUM CAP, 3 1/4 INS. DIAM., MARKED AS SHOWN, WITH A MAGNET IN A CLEAR PLASTIC CASE DEPOSITED AT THE BASE OF THE MONUMENT CARSONITE WITNESS POST TO THE NORTH.
(I)	ASLS 2019-19 L8 LS-12318 2023	SET AN ALUM. POST, 2 1/2 INS. DIAM. X 28 INS. LONG, 25 INS. IN THE GROUND, WITH AN ALUMINUM CAP, 3 1/4 INS. DIAM., MARKED AS SHOWN, WITH A MAGNET IN A CLEAR PLASTIC CASE DEPOSITED AT THE BASE OF THE MONUMENT CARSONITE WITNESS POST TO THE NORTH.

⊕	PRIMARY MONUMENT SET THIS SURVEY
●	SECONDARY MONUMENT SET THIS SURVEY
---	PROTRACTED SECTION LINES
---	SURVEYED LINES
---	EASEMENT
---	TIE
---	ADDITIONAL MEANDERS
(G)	MONUMENT IDENTIFIER
MHWL	MEAN HIGH WATER LINE
///	SECTION-LINE EASEMENT VACATED BY THIS PLAT

NO.	BEARING	DIST.
L1	N 29°38'04" E	206.98'
L2	N 27°27'40" W	344.14'
L3	N 9°51'51" E	566.92'
L4	N 54°13'59" W	117.22'
L5	N 17°26'10" W	43.27'
L6	N 32°10'10" W	89.81'
L7	N 67°54'27" W	122.40'
L8	N 37°50'16" W	246.51'
L9	N 20°53'46" W	138.69'
L10	N 40°40'31" W	158.59'
L11	N 33°13'42" W	112.84'
L12	S 87°31'09" W	144.48'
L13	N 63°53'11" W	230.26'
L14	N 64°39'04" W	138.04'
L15	N 57°49'57" W	194.08'
L16	N 44°16'20" W	109.25'
L17	N 43°06'18" W	130.97'
L18	N 26°56'00" W	182.88'
L19	N 11°28'40" W	173.69'

Unsurveyed
Section 27
STATE OF ALASKA

SECTION-LINE EASEMENT
VACATED BY THIS PLAT

PUBLIC ACCESS EASEMENT
(SEE NOTE 13)

VIEKODA BAY

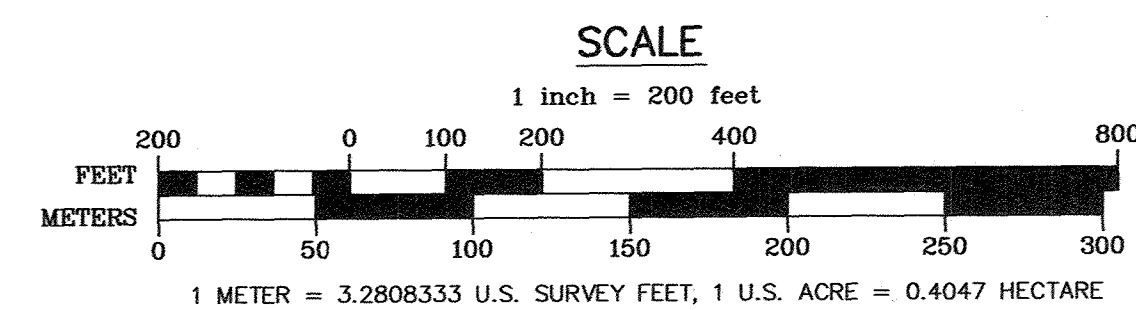
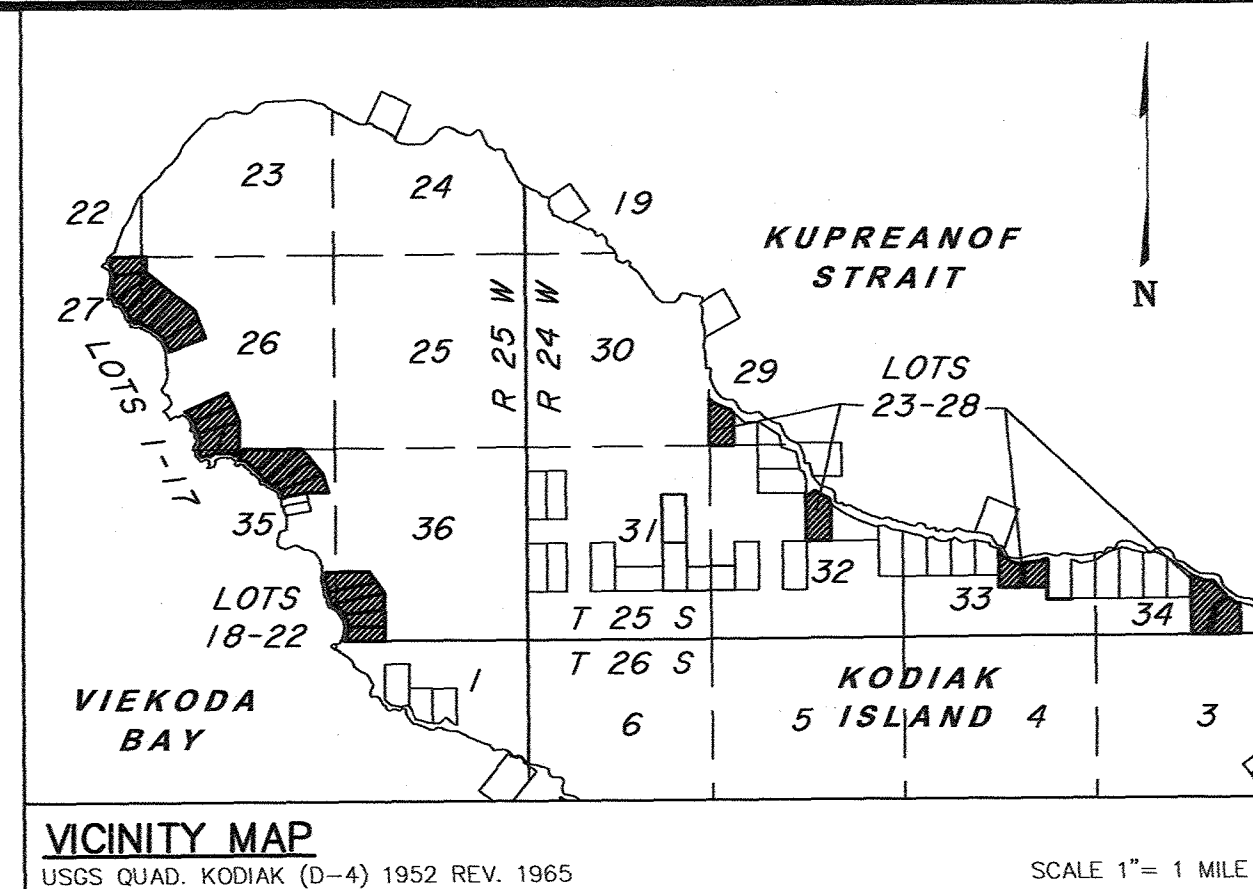
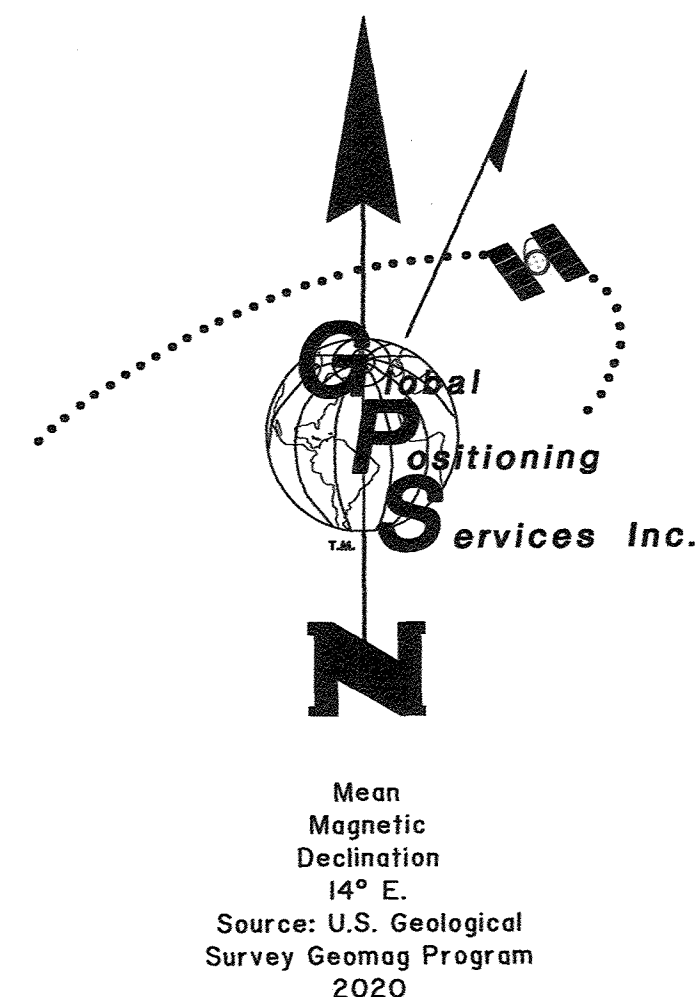
KUPREANOF PENINSULA
KODIAK ISLAND

Unsurveyed Remainder
Section 26
STATE OF ALASKA

Unsurveyed Remainder
Section 26
STATE OF ALASKA

LOTS 9-17
CONTINUED ON
SHEET 3

LOT 9
9.95 Acres



DATES OF SURVEY BEGINNING: OCTOBER 11, 2020 ENDING: SEPTEMBER 5, 2023	LINDSEY SUE VAUGHAN, PLS GLOBAL POSITIONING SERVICES, INC. 2803 BLUEBERRY ROAD ANCHORAGE, ALASKA 99503 PHONE No. (907) 569-2000 CERT. OF AUTHORIZATION NO. AECC1346
---	--

STATE OF ALASKA
DEPARTMENT OF NATURAL RESOURCES
DIVISION OF MINING, LAND & WATER
ANCHORAGE, ALASKA

ALASKA STATE LAND SURVEY NO. 2019-19
KUPREANOF SHORES SUBDIVISION

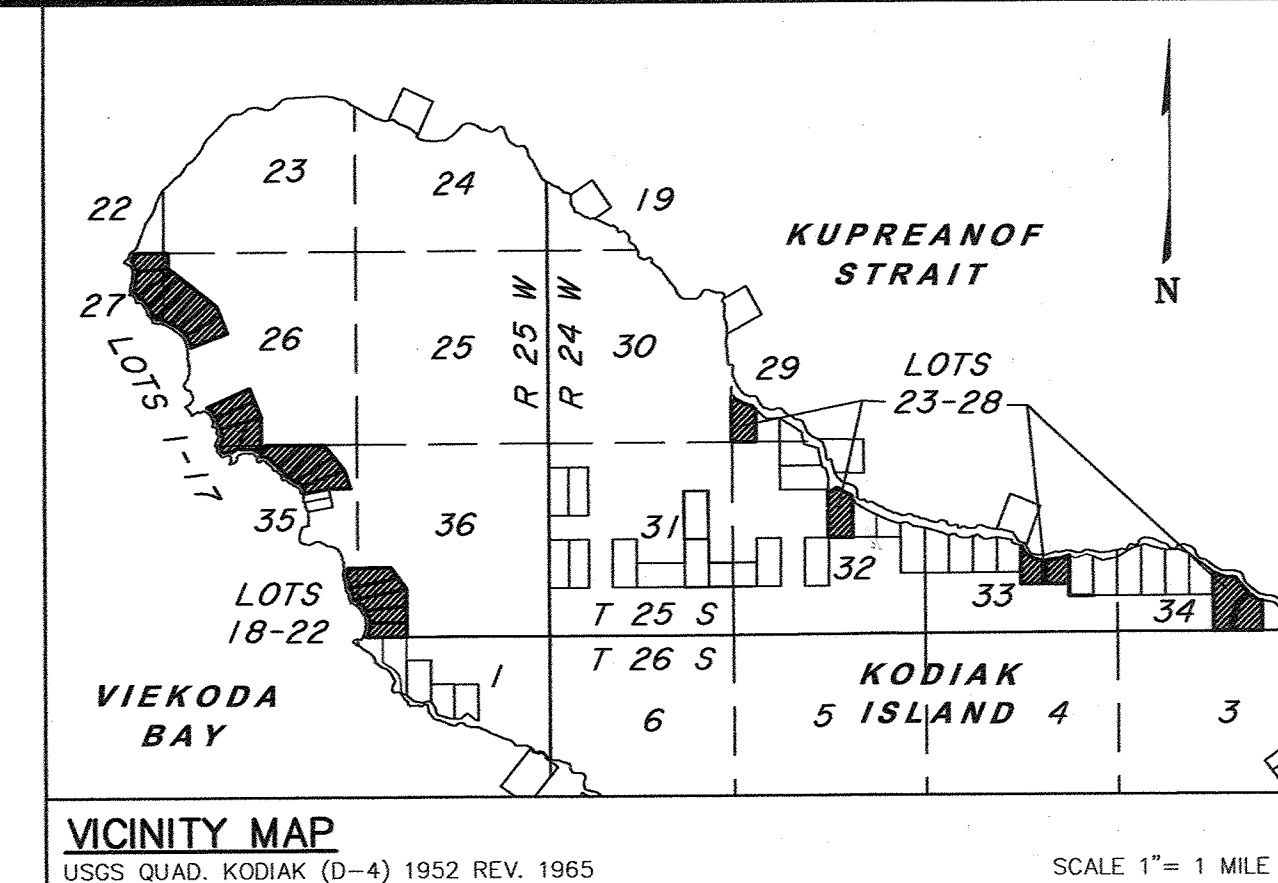
A SUBDIVISION OF
PORTIONS OF GOVERNMENT LOT 1
LOCATED IN
SECTIONS 29, 32, 33, & 34, T25S, R24W, SM, AND
SECTIONS 26, 27, 35, & 36, T25S, R25W, SM,
AND SECTION-LINE EASEMENT VACATION

CREATING LOTS 1 THROUGH 28
CONTAINING 305.99 ACRES MORE OR LESS
KODIAK RECORDING DISTRICT

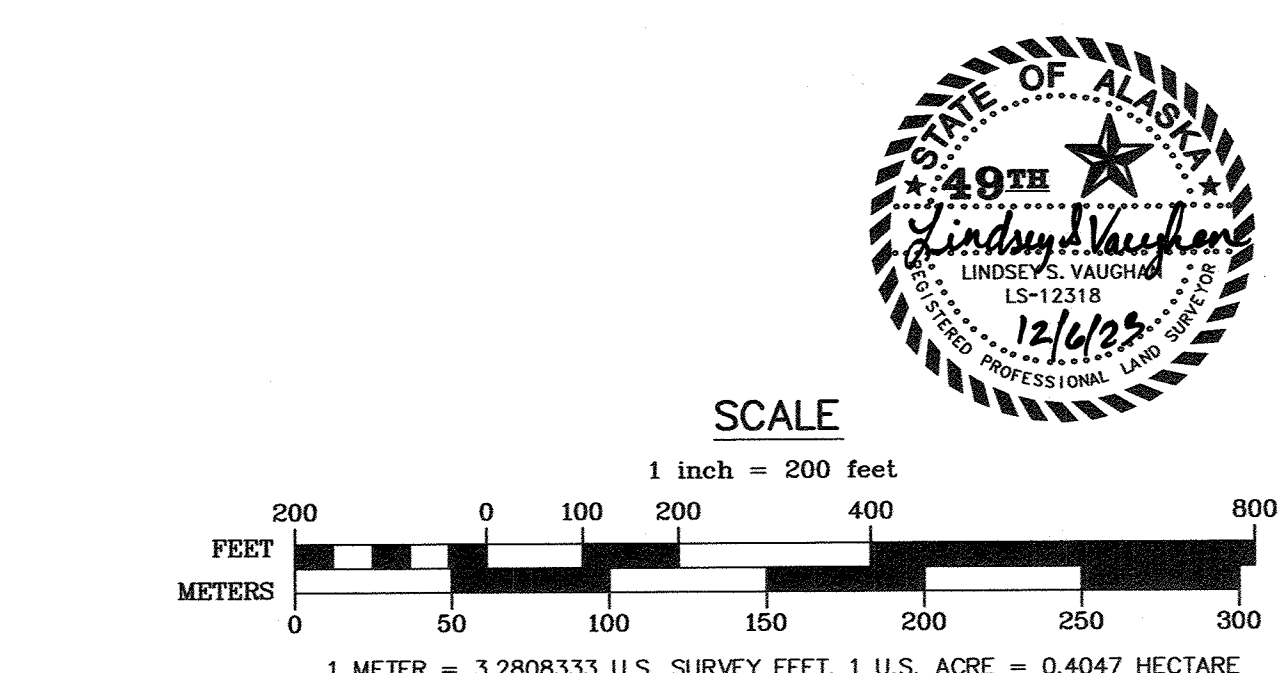
DRAWN BY: LLL/LSV DATE: 10/2023 SCALE: 1" = 200'	APPROVAL RECOMMENDED Kevin [Signature] STATEWIDE PLATING SUPERVISOR DATE: 12/7/2023 CHECKED: DNR FILE NO. ASLS 20190019//EV-3-337
--	--

SHEET 2 OF 6

Kodiak Recording District PL2023-5



- LEGEND:**
- ⊕ PRIMARY MONUMENT RECOVERED
 - ⊙ PRIMARY MONUMENT SET THIS SURVEY
 - SECONDARY MONUMENT SET THIS SURVEY
 - PROTRACTED SECTION LINES
 - SURVEYED LINES
 - - - EASEMENT
 - - - TIE
 - - - ADDITIONAL MEANDERS
 - (R) MONUMENT IDENTIFIER
 - () RECORD INFORMATION
 - MHWL MEAN HIGH WATER LINE
 - ▨ SECTION-LINE EASEMENT VACATED BY THIS PLAT



DATES OF SURVEY
BEGINNING: OCTOBER 11, 2020
ENDING: SEPTEMBER 5, 2023

LINSEY SUE VAUGHAN, PLS
GLOBAL POSITIONING SERVICES, INC.
2603 BLUEBERRY ROAD
ANCHORAGE, ALASKA 99503
PHONE No. (907) 569-2000
CERT. OF AUTHORIZATION NO. AECC1346

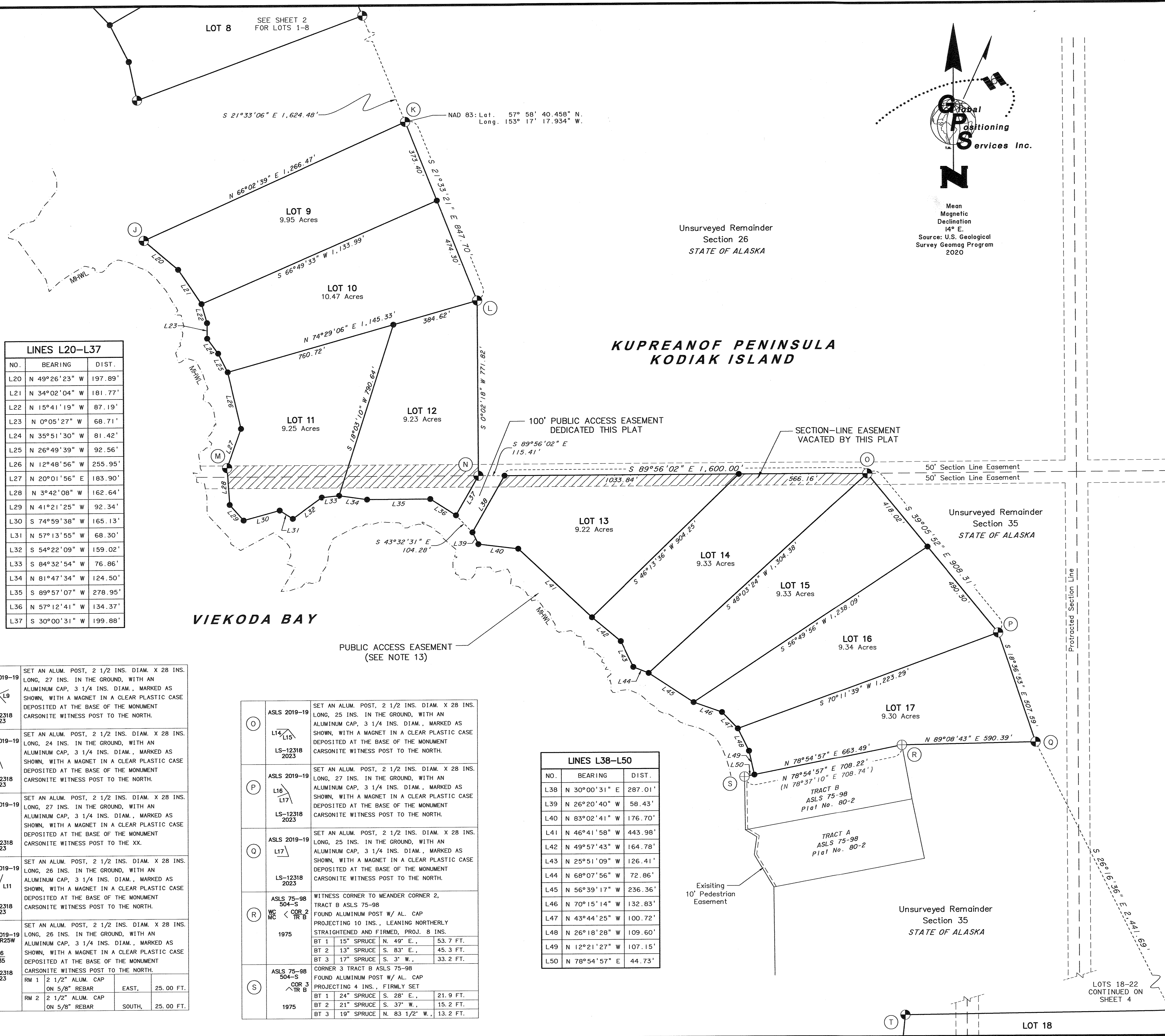
STATE OF ALASKA
DEPARTMENT OF NATURAL RESOURCES
DIVISION OF MINING, LAND & WATER
ANCHORAGE, ALASKA

ALASKA STATE LAND SURVEY NO. 2019-19
KUPREANOF SHORES SUBDIVISION
A SUBDIVISION OF PORTIONS OF GOVERNMENT LOT 1 LOCATED IN SECTIONS 29, 32, 33, & 34, T25S, R24W, SM, AND SECTIONS 26, 27, 35, & 36, T25S, R25W, SM, AND SECTION-LINE EASEMENT VACATION
CREATING LOTS 1 THROUGH 28 CONTAINING 305.99 ACRES MORE OR LESS
KODIAK RECORDING DISTRICT

DRAWN BY: LLL/LSV
DATE: 10/20/23
SCALE: 1" = 200'

APPROVAL RECOMMENDED
Kevin Brown
STATEWIDE PLATTING SUPERVISOR
DATE: 12/7/2023

CHECKED: LSV
DNR FILE NO.: ASLS 20190019//EV-3-337



LINES L20-L37

NO.	BEARING	DIST.
L20	N 49°26'23" W	197.89'
L21	N 34°02'04" W	181.77'
L22	N 15°41'19" W	87.19'
L23	N 0°05'27" W	68.71'
L24	N 35°51'30" W	81.42'
L25	N 26°49'39" W	92.56'
L26	N 12°48'56" W	255.95'
L27	N 20°01'56" E	183.90'
L28	N 3°42'08" W	162.64'
L29	N 41°21'25" W	92.34'
L30	S 74°59'38" W	165.13'
L31	N 57°13'55" W	68.30'
L32	S 54°22'09" W	159.02'
L33	S 84°32'54" W	76.86'
L34	N 81°47'34" W	124.50'
L35	S 89°57'07" W	278.95'
L36	N 57°12'41" W	134.37'
L37	S 30°00'31" W	199.88'

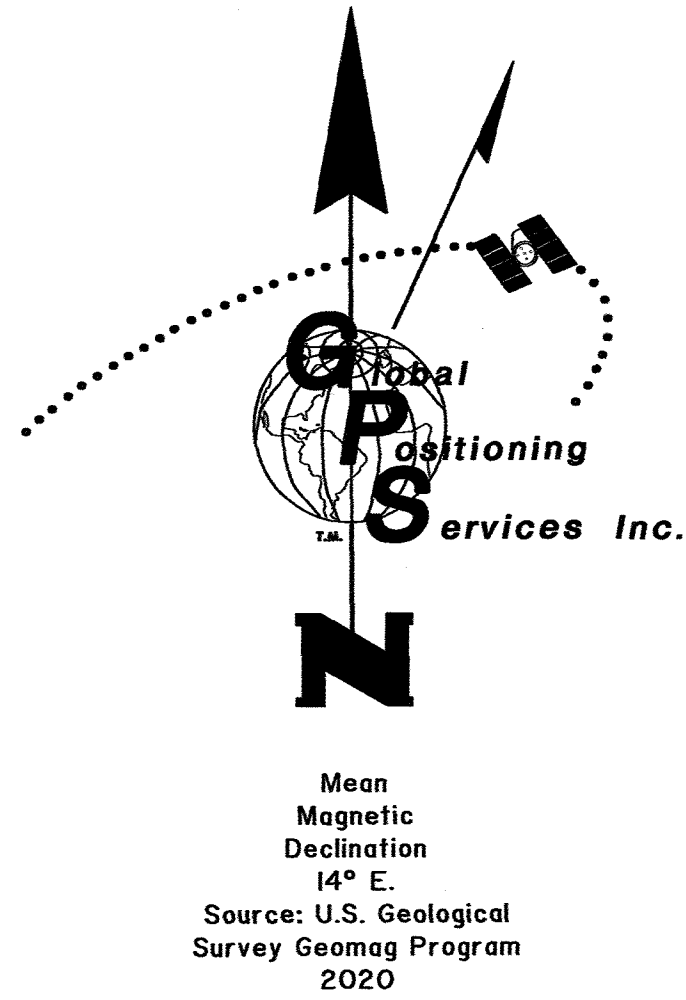
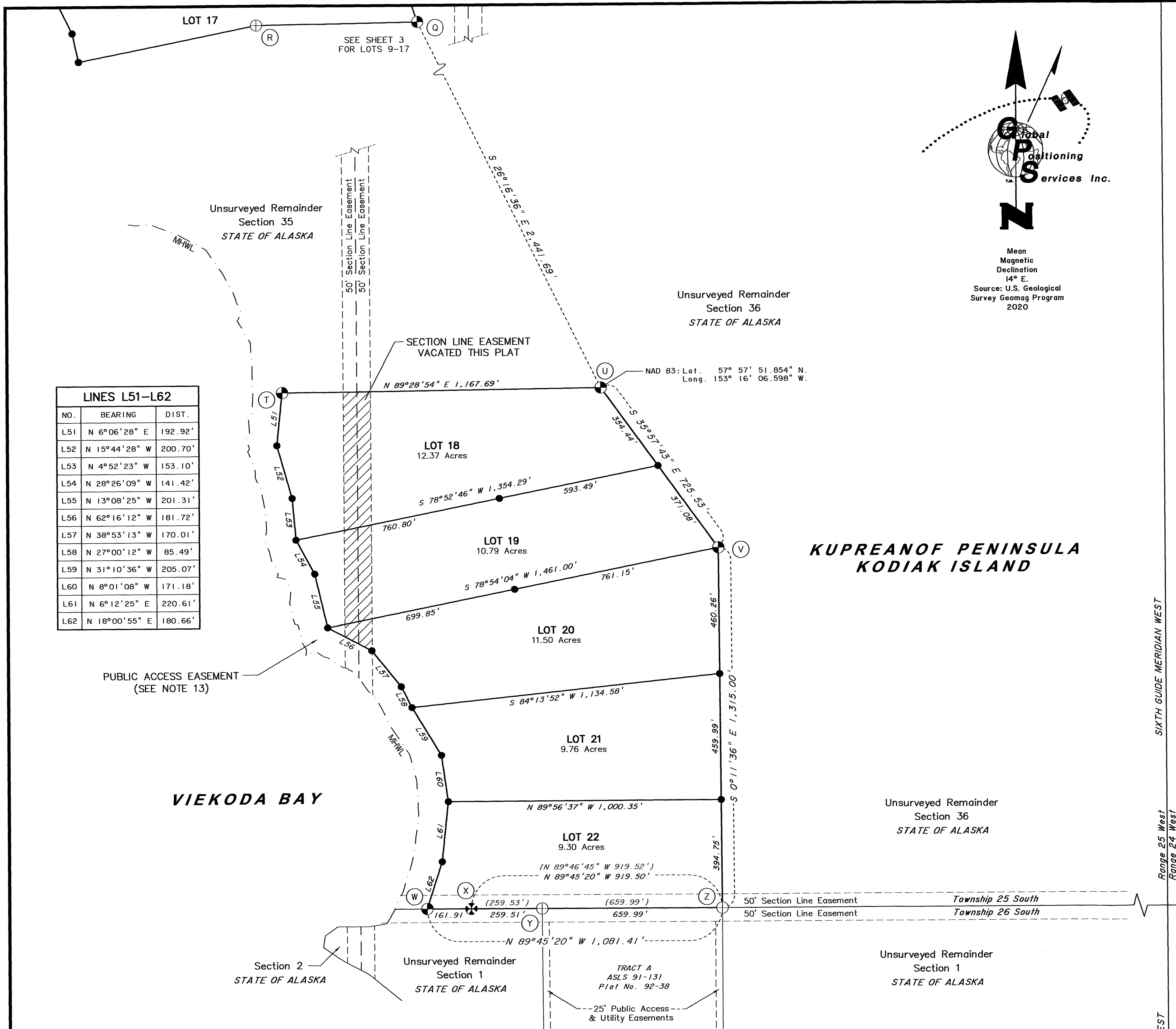
LINES L38-L50

NO.	BEARING	DIST.
L38	N 30°00'31" E	287.01'
L39	N 26°20'40" W	58.43'
L40	N 83°02'41" W	176.70'
L41	N 46°41'58" W	443.98'
L42	N 49°57'43" W	164.78'
L43	N 25°51'09" W	126.41'
L44	N 68°07'56" W	72.86'
L45	N 56°39'17" W	236.36'
L46	N 70°15'14" W	132.83'
L47	N 43°44'25" W	100.72'
L48	N 26°18'28" W	109.60'
L49	N 12°21'27" W	107.15'
L50	N 78°54'57" E	44.73'

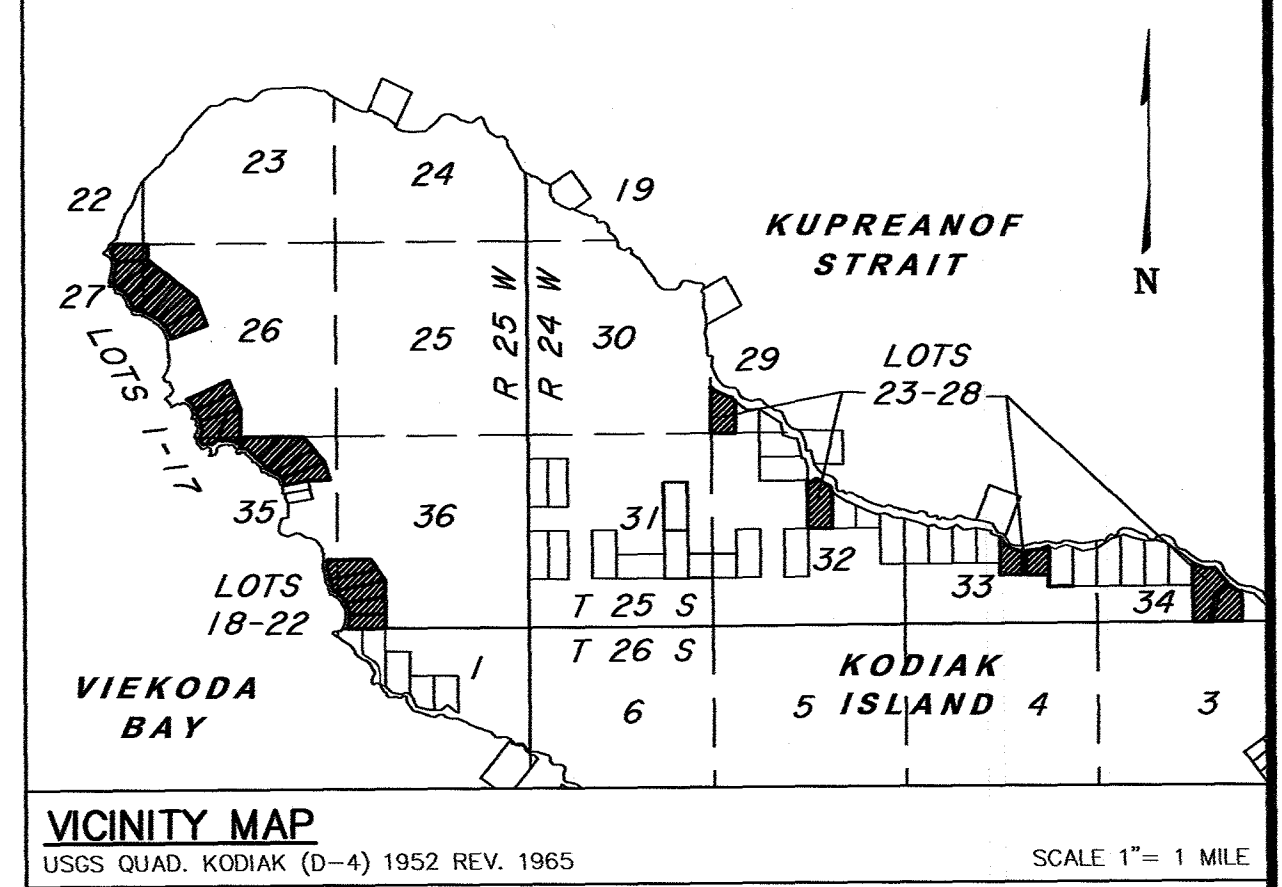
(J)	ASLS 2019-19 LS-12318 2023	SET AN ALUM. POST, 2 1/2 INS. DIAM. X 28 INS. LONG, 27 INS. IN THE GROUND, WITH AN ALUMINUM CAP, 3 1/4 INS. DIAM., MARKED AS SHOWN, WITH A MAGNET IN A CLEAR PLASTIC CASE DEPOSITED AT THE BASE OF THE MONUMENT CARSONITE WITNESS POST TO THE NORTH.
(K)	ASLS 2019-19 LS-12318 2023	SET AN ALUM. POST, 2 1/2 INS. DIAM. X 28 INS. LONG, 24 INS. IN THE GROUND, WITH AN ALUMINUM CAP, 3 1/4 INS. DIAM., MARKED AS SHOWN, WITH A MAGNET IN A CLEAR PLASTIC CASE DEPOSITED AT THE BASE OF THE MONUMENT CARSONITE WITNESS POST TO THE NORTH.
(L)	ASLS 2019-19 LS-12318 2023	SET AN ALUM. POST, 2 1/2 INS. DIAM. X 28 INS. LONG, 27 INS. IN THE GROUND, WITH AN ALUMINUM CAP, 3 1/4 INS. DIAM., MARKED AS SHOWN, WITH A MAGNET IN A CLEAR PLASTIC CASE DEPOSITED AT THE BASE OF THE MONUMENT CARSONITE WITNESS POST TO THE XX.
(M)	ASLS 2019-19 LS-12318 2023	SET AN ALUM. POST, 2 1/2 INS. DIAM. X 28 INS. LONG, 26 INS. IN THE GROUND, WITH AN ALUMINUM CAP, 3 1/4 INS. DIAM., MARKED AS SHOWN, WITH A MAGNET IN A CLEAR PLASTIC CASE DEPOSITED AT THE BASE OF THE MONUMENT CARSONITE WITNESS POST TO THE NORTH.
(N)	ASLS 2019-19 T25S R25W 1/4 S26 S35 LS-12318 2023	SET AN ALUM. POST, 2 1/2 INS. DIAM. X 28 INS. LONG, 26 INS. IN THE GROUND, WITH AN ALUMINUM CAP, 3 1/4 INS. DIAM., MARKED AS SHOWN, WITH A MAGNET IN A CLEAR PLASTIC CASE DEPOSITED AT THE BASE OF THE MONUMENT CARSONITE WITNESS POST TO THE NORTH.

(O)	ASLS 2019-19 LS-12318 2023	SET AN ALUM. POST, 2 1/2 INS. DIAM. X 28 INS. LONG, 25 INS. IN THE GROUND, WITH AN ALUMINUM CAP, 3 1/4 INS. DIAM., MARKED AS SHOWN, WITH A MAGNET IN A CLEAR PLASTIC CASE DEPOSITED AT THE BASE OF THE MONUMENT CARSONITE WITNESS POST TO THE NORTH.
(P)	ASLS 2019-19 LS-12318 2023	SET AN ALUM. POST, 2 1/2 INS. DIAM. X 28 INS. LONG, 27 INS. IN THE GROUND, WITH AN ALUMINUM CAP, 3 1/4 INS. DIAM., MARKED AS SHOWN, WITH A MAGNET IN A CLEAR PLASTIC CASE DEPOSITED AT THE BASE OF THE MONUMENT CARSONITE WITNESS POST TO THE NORTH.
(Q)	ASLS 2019-19 LS-12318 2023	SET AN ALUM. POST, 2 1/2 INS. DIAM. X 28 INS. LONG, 25 INS. IN THE GROUND, WITH AN ALUMINUM CAP, 3 1/4 INS. DIAM., MARKED AS SHOWN, WITH A MAGNET IN A CLEAR PLASTIC CASE DEPOSITED AT THE BASE OF THE MONUMENT CARSONITE WITNESS POST TO THE NORTH.
(R)	ASLS 75-98 504-S COR 2 MC < COR 2 TR B 1975	WITNESS CORNER TO MEANDER CORNER 2, TRACT B ASLS 75-98 FOUND ALUMINUM POST W/ AL. CAP PROJECTING 10 INS., LEANING NORTHERLY STRAIGHTENED AND FIRMED, PROJ. 8 INS. BT 1 15" SPRUCE N. 49° E., 53.7 FT. BT 2 13" SPRUCE S. 83° E., 45.3 FT. BT 3 17" SPRUCE S. 3° W., 33.2 FT.
(S)	ASLS 75-98 504-S COR 3 TR B 1975	CORNER 3 TRACT B ASLS 75-98 FOUND ALUMINUM POST W/ AL. CAP PROJECTING 4 INS., FIRMLY SET BT 1 24" SPRUCE S. 28° E., 21.9 FT. BT 2 21" SPRUCE S. 37° W., 15.2 FT. BT 3 19" SPRUCE N. 83 1/2° W., 13.2 FT.

LINES L51-L62		
NO.	BEARING	DIST.
L51	N 6°06'28" E	192.92'
L52	N 15°44'28" W	200.70'
L53	N 4°52'23" W	153.10'
L54	N 28°26'09" W	141.42'
L55	N 13°08'25" W	201.31'
L56	N 62°16'12" W	181.72'
L57	N 38°53'13" W	170.01'
L58	N 27°00'12" W	85.49'
L59	N 31°10'36" W	205.07'
L60	N 8°01'08" W	171.18'
L61	N 6°12'25" E	220.61'
L62	N 18°00'55" E	180.66'



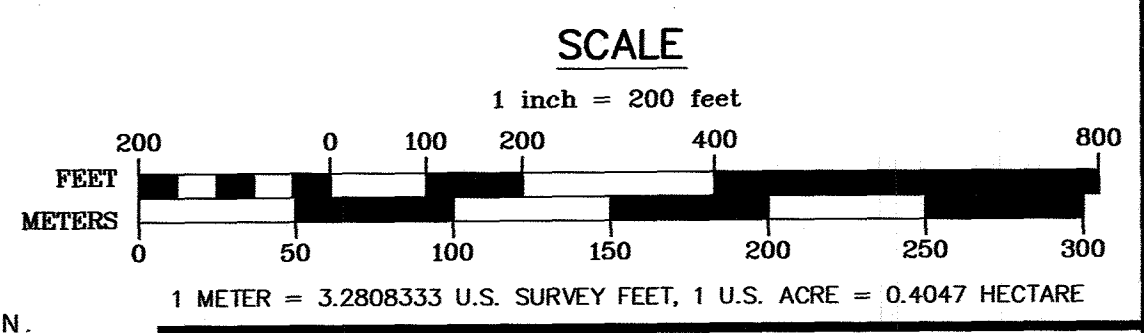
(T)	ASLS 2019-19 LS-12318 2023	SET AN ALUM. POST, 2 1/2 INS. DIAM. X 28 INS. LONG, 27 INS. IN THE GROUND, WITH AN ALUMINUM CAP, 3 1/4 INS. DIAM., MARKED AS SHOWN, WITH A MAGNET IN A CLEAR PLASTIC CASE DEPOSITED AT THE BASE OF THE MONUMENT CARSONITE WITNESS POST TO THE NORTH.
(U)	ASLS 2019-19 LS-12318 2023	SET AN ALUM. POST, 2 1/2 INS. DIAM. X 28 INS. LONG, 25 INS. IN THE GROUND, WITH AN ALUMINUM CAP, 3 1/4 INS. DIAM., MARKED AS SHOWN, WITH A MAGNET IN A CLEAR PLASTIC CASE DEPOSITED AT THE BASE OF THE MONUMENT CARSONITE WITNESS POST TO THE NORTH.
(V)	ASLS 2019-19 LS-12318 2023	SET AN ALUM. POST, 2 1/2 INS. DIAM. X 28 INS. LONG, 27 INS. IN THE GROUND, WITH AN ALUMINUM CAP, 3 1/4 INS. DIAM., MARKED AS SHOWN, WITH A MAGNET IN A CLEAR PLASTIC CASE DEPOSITED AT THE BASE OF THE MONUMENT CARSONITE WITNESS POST TO THE NORTH.
(W)	ASLS 2019-19 LS-12318 2023	SET AN ALUM. POST, 2 1/2 INS. DIAM. X 28 INS. LONG, 25 INS. IN THE GROUND, WITH AN ALUMINUM CAP, 3 1/4 INS. DIAM., MARKED AS SHOWN, WITH A MAGNET IN A CLEAR PLASTIC CASE DEPOSITED AT THE BASE OF THE MONUMENT CARSONITE WITNESS POST TO THE NORTH.
(X)	T25S R25W WC MC S36 SI T26S 1971	WITNESS CORNER TO THE MEANDER CORNER OF SECTIONS 31 AND 36. FOUND IRON POST, 2 1/2 INS. DIAM., FIRMLY SET, PROJECTING 8 INS. OUT OF THE GROUND, WITH A BRASS CAP, 3 1/4 INS. DIAM., MARKED AS SHOWN. BT 1 22" SPRUCE S. 14" E., 88.9 FT. BT 2 26" SPRUCE N. 28" W., 85.8 FT.
(Y)	ASLS 91-131 S-36 W-1/64 C-9 TR-A S-1 1638-S 1991	CORNER 9, TRACT A, ASLS 91-131 FOUND ALUMINUM POST, 2 1/2 INS. DIAM., FIRMLY SET, PROJECTING 2 INS. OUT OF THE GROUND, WITH AN ALUM. CAP, 2 1/2 INS. DIAM., MARKED AS SHOWN. BT 1 24" SPRUCE N. 28" E., 25.8 FT. BT 2 16" SPRUCE S. 49" E., 58.8 FT. BT 3 15" SPRUCE S. 34" E., 53.3 FT.
(Z)	ASLS 91-131 S-36 W-1/16 C-1 TR-A S-1 1638-S 1991	CORNER 1, TRACT A, ASLS 91-131 FOUND ALUMINUM POST, 2 1/2 INS. DIAM., FIRMLY SET, PROJECTING 3 INS. OUT OF THE GROUND, WITH AN ALUM. CAP, 2 1/2 INS. DIAM., MARKED AS SHOWN. RM 1 5/8" REBAR W/ALUM. CAP NORTH, 10.00 FT. RM 2 5/8" REBAR W/ALUM. CAP EAST, 10.00 FT. COR. OF SECS. 5, 6, 31, AND 32
(VA)	T25S R24W S31 S32 S6 S5 T26S 1986	FOUND ALUMINUM POST, W/AL. CAP. MARKED AS SHOWN, OUT OF GROUND. RESET TO PROJECT 4 INS. OUT OF THE GROUND ATOP ORIGINAL MONUMENT BASE RM 1 2" ALUM. CAP ON 5/8" REBAR NORTH, 25.00 FT. RM 2 2" ALUM. CAP ON 5/8" REBAR EAST, 25.00 FT. BT 1 NOT FOUND



LEGEND:	
	BLM MONUMENT RECOVERED
	PRIMARY MONUMENT RECOVERED
	PRIMARY MONUMENT SET THIS SURVEY
	SECONDARY MONUMENT SET THIS SURVEY
	PROTRACTED SECTION LINES
	SURVEYED LINES
	EASEMENT
	TIE
	ADDITIONAL MEANDERS
	MONUMENT IDENTIFIER
	RECORD INFORMATION
	MEAN HIGH WATER LINE
	SECTION-LINE EASEMENT VACATED BY THIS PLAT

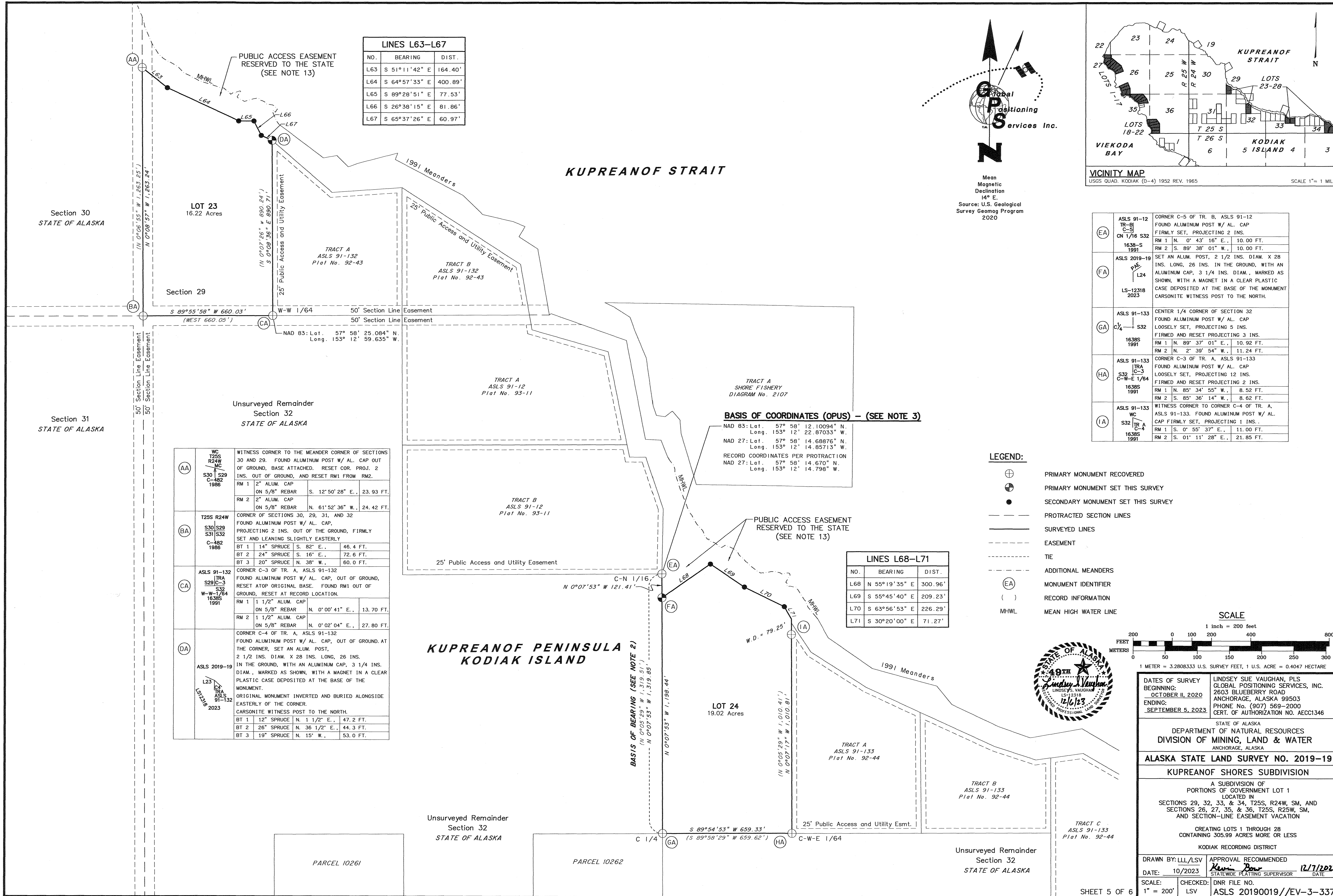
SIXTH GUIDE MERIDIAN WEST
Range 25 West
Range 24 West

Unsurveyed Remainder Section 31 STATE OF ALASKA
Unsurveyed Remainder Section 32 STATE OF ALASKA
Unsurveyed Remainder Section 31 STATE OF ALASKA
Unsurveyed Remainder Section 32 STATE OF ALASKA
Unsurveyed Remainder Section 6 STATE OF ALASKA
Unsurveyed Remainder Section 5 STATE OF ALASKA

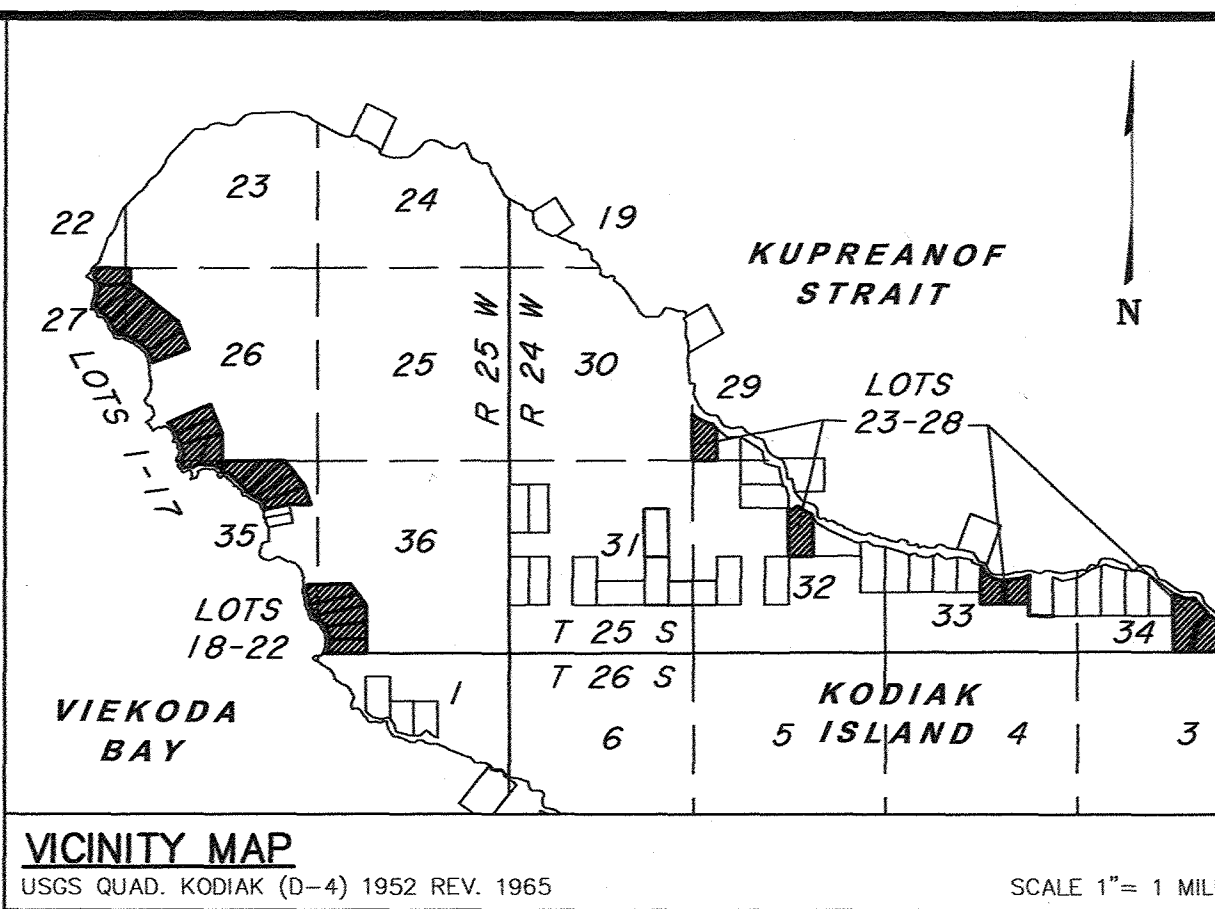
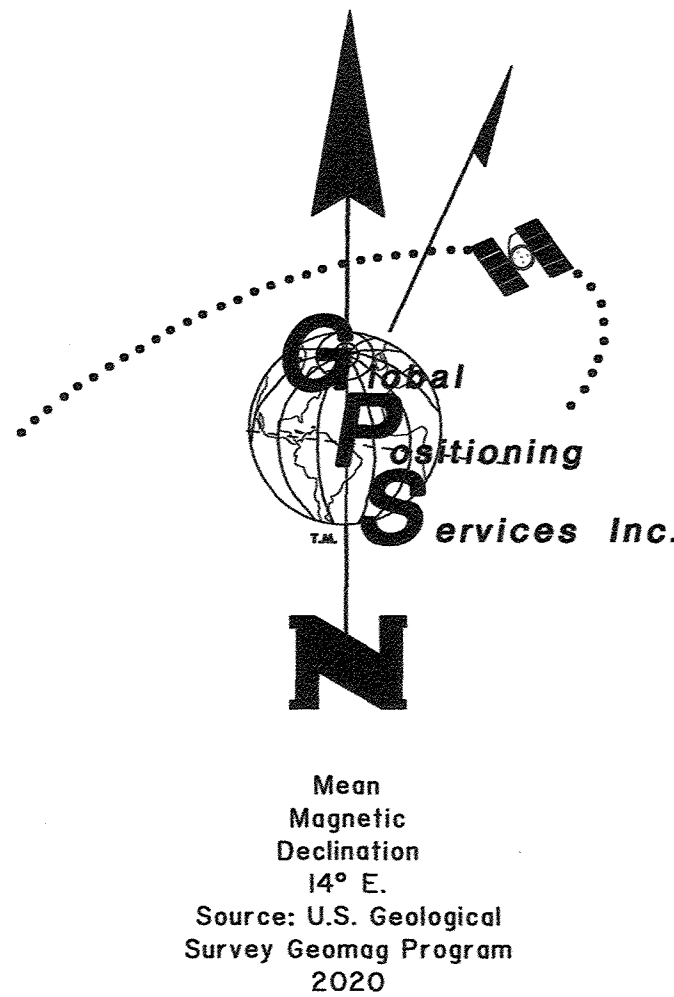


DATES OF SURVEY BEGINNING: OCTOBER 11, 2020 ENDING: SEPTEMBER 5, 2023		LINDSEY SUE VAUGHAN, PLS GLOBAL POSITIONING SERVICES, INC. 2603 BLUEBERRY ROAD ANCHORAGE, ALASKA 99503 PHONE No. (907) 569-2000 CERT. OF AUTHORIZATION NO. AECC1346	
STATE OF ALASKA DEPARTMENT OF NATURAL RESOURCES DIVISION OF MINING, LAND & WATER ANCHORAGE, ALASKA			
ALASKA STATE LAND SURVEY NO. 2019-19 KUPREANOF SHORES SUBDIVISION			
A SUBDIVISION OF PORTIONS OF GOVERNMENT LOT 1 LOCATED IN SECTIONS 29, 32, 33, & 34, T25S, R24W, SM, AND SECTIONS 26, 27, 35, & 36, T25S, R25W, SM, AND SECTION-LINE EASEMENT VACATION			
CREATING LOTS 1 THROUGH 28 CONTAINING 305.99 ACRES MORE OR LESS KODIAK RECORDING DISTRICT			
DRAWN BY: LLL/LSV DATE: 10/2023		APPROVAL RECOMMENDED DATE: 12/7/2023 STATEWIDE PLATING SUPERVISOR	
SCALE: 1" = 200' CHECKED: LSV		DNR FILE NO. ASLS 20190019//EV-3-337	





LINES L63-L67		
NO.	BEARING	DIST.
L63	S 51°11'42" E	164.40'
L64	S 64°57'33" E	400.89'
L65	S 89°28'51" E	77.53'
L66	S 26°38'15" E	81.86'
L67	S 65°37'26" E	60.97'



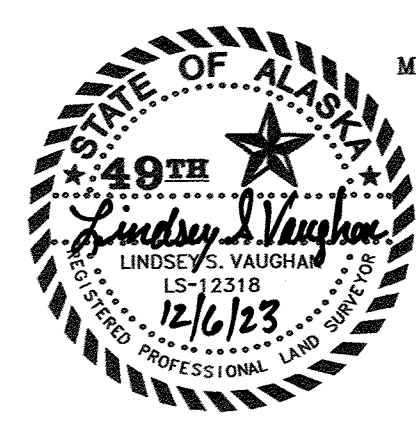
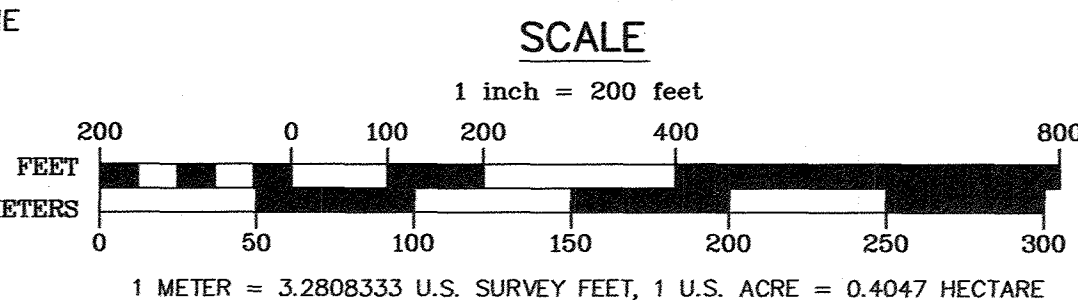
BASIS OF COORDINATES (OPUS) - (SEE NOTE 3)

NAD 83: Lat. 57° 58' 12.10094" N.
Long. 153° 12' 22.87033" W.
NAD 27: Lat. 57° 58' 14.68876" N.
Long. 153° 12' 14.85713" W.
RECORD COORDINATES PER PROTRACTION
NAD 27: Lat. 57° 58' 14.670" N.
Long. 153° 12' 14.798" W.

LEGEND:

- ⊕ PRIMARY MONUMENT RECOVERED
- ⊙ PRIMARY MONUMENT SET THIS SURVEY
- SECONDARY MONUMENT SET THIS SURVEY
- PROTRACTED SECTION LINES
- SURVEYED LINES
- EASEMENT
- TIE
- ADDITIONAL MEANDERS
- ⓔ MONUMENT IDENTIFIER
- () RECORD INFORMATION
- MHWL MEAN HIGH WATER LINE

LINES L68-L71		
NO.	BEARING	DIST.
L68	N 55°19'35" E	300.96'
L69	S 55°45'40" E	209.23'
L70	S 63°56'53" E	226.29'
L71	S 30°20'00" E	71.27'



DATES OF SURVEY
BEGINNING: OCTOBER 11, 2020
ENDING: SEPTEMBER 5, 2023

STATE OF ALASKA
DEPARTMENT OF NATURAL RESOURCES
DIVISION OF MINING, LAND & WATER
ANCHORAGE, ALASKA

ALASKA STATE LAND SURVEY NO. 2019-19
KUPREANOF SHORES SUBDIVISION

A SUBDIVISION OF
PORTIONS OF GOVERNMENT LOT 1
LOCATED IN
SECTIONS 26, 27, 35, & 36, T25S, R25W, SM,
AND SECTION-LINE EASEMENT VACATION

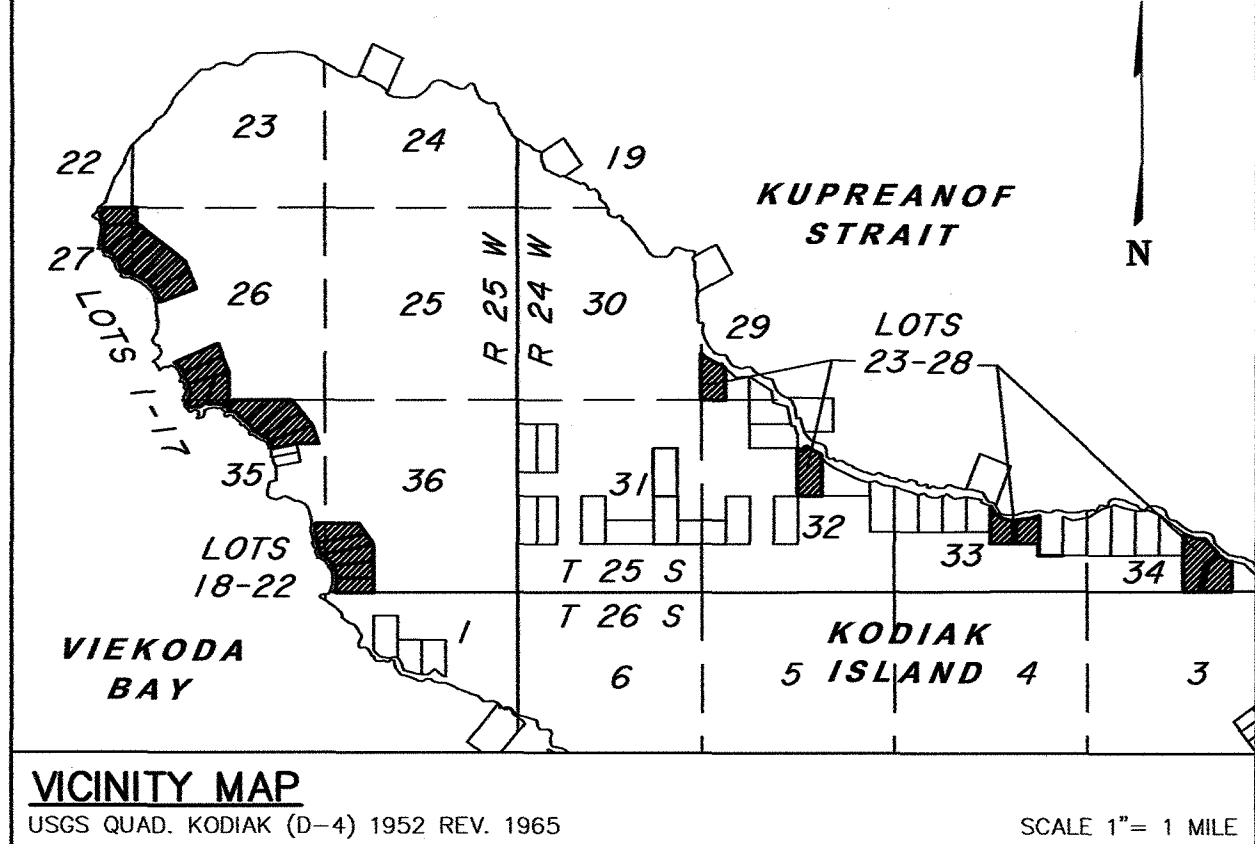
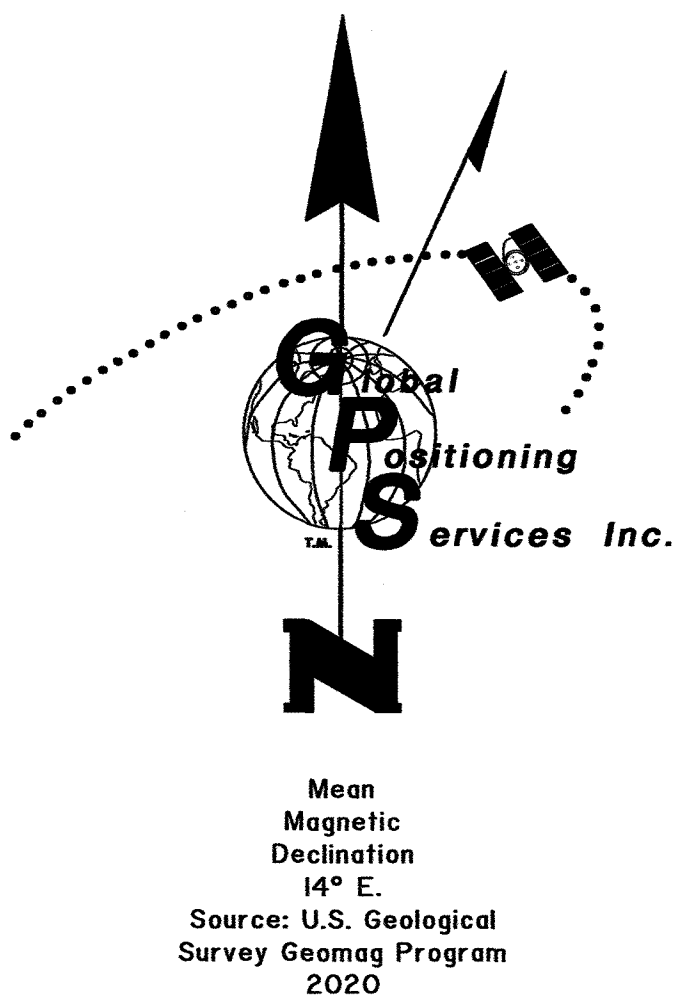
CREATING LOTS 1 THROUGH 28
CONTAINING 305.99 ACRES MORE OR LESS
KODIAK RECORDING DISTRICT

DRAWN BY: LLL/LSV
DATE: 10/2023
SCALE: 1" = 200'
APPROVAL RECOMMENDED
STATEWIDE PLATING SUPERVISOR
DATE: 12/7/2023
DNR FILE NO.
ASLS 20190019/EV-3-337

LINES L72-L77		
NO.	BEARING	DIST.
L72	S 28°12'15" E	247.46'
L73	S 59°03'40" E	263.76'
L74	S 76°22'36" E	202.90'
L75	N 84°35'55" E	64.03'
L76	N 83°11'43" E	426.58'
L77	N 68°16'36" E	209.50'

KUPREANOF STRAIT

LINES L78-L83		
NO.	BEARING	DIST.
L78	S 68°32'05" E	368.81'
L79	N 86°11'57" E	222.99'
L80	S 42°00'06" E	563.54'
L81	S 52°45'03" E	188.41'
L82	S 69°14'37" E	106.43'
L83	N 80°09'52" E	63.38'



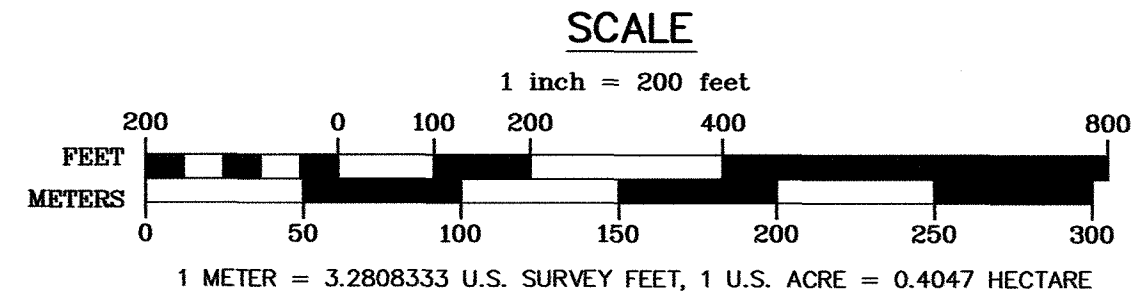
(QA)	ASLS 91-135 TR B C-1 16385 1991	CORNER C-1 OF TR. B, ASLS 91-135 FOUND ALUMINUM POST W/ AL. CAP FIRMLY SET, FLUSH WITH GROUND. BT 1 13" SPRUCE N. 24 1/2" E., 35.0 FT. BT 2 13" SPRUCE S. 82° E., 39.5 FT. BT 3 27" SPRUCE S. 50° W., 13.8 FT.
	ASLS 91-135 TR B C-2 16385 1991	CORNER C-2 OF TR. B, ASLS 91-135 FOUND ALUMINUM POST W/ AL. CAP FIRMLY SET, LEANING SOUTHERLY, FLUSH WITH GROUND. FIRMED AND STRAIGHTENED. RM 1 1 1/2" ALUM. CAP ON 5/8" REBAR N. 89°11'30" E., 10.00 FT. RM 2 1 1/2" ALUM. CAP ON 5/8" REBAR N. 89°35'38" W., 20.00 FT.
(SA)	T25S R24W S34 S3 T26S C-482 1986	1/4 CORNER OF SECTIONS 34 AND 3 FOUND ALUMINUM POST W/ AL. CAP OUT OF GROUND RESET ATOP ORIGINAL BASE, PROJ. 4 INS. BT 1 20" SPRUCE S. 88 1/2" E., 122.3 FT. BT 2 32" SPRUCE S. 37° W., 19.3 FT. BT 3 30" SPRUCE N. 7° W., 73.2 FT.
(TA)	ASLS 2019-19 E-1 S34 16 S3 LS-12318 2023	CORNER C-2 OF TR. C, ASLS 91-135 FOUND MAGNETIC BASE APPX. 16" BELOW GRADE. ORIGINAL MONUMENT NOT FOUND. AT THE CORNER, SET AN ALUM. POST, 2 1/2 INS. DIAM. X 28 INS. LONG, 24 INS. IN THE GROUND, WITH AN ALUMINUM CAP, 3 1/4 INS. DIAM., MARKED AS SHOWN, WITH A MAGNET IN A CLEAR PLASTIC CASE DEPOSITED AT THE BASE OF THE MONUMENT. BT 1 24" SPRUCE S. 88 1/2" E., 6.4 FT. BT 2 12" SPRUCE S. 23° W., 28.2 FT. BT 3 19" SPRUCE N. 84 1/2" W., 20.5 FT.
(UA)	ASLS 91-135 S34 TR C C-3 16385 1991	CORNER C-3 OF TR. C, ASLS 91-135 FOUND ALUMINUM POST W/ AL. CAP OUT OF GROUND RESET ATOP ORIGINAL BASE, PROJ. 6 INS. RM 1 1 1/2" ALUM. CAP ON 5/8" REBAR S. 0°22'34" W., 12.66 FT. RM 2 1 1/2" ALUM. CAP ON 5/8" REBAR S. 0°13'19" W., 20.48 FT.

KUPREANOF PENINSULA
KODIAK ISLAND

Unsurveyed Remainder
Section 33
STATE OF ALASKA

Unsurveyed Remainder
Section 34
STATE OF ALASKA

Unsurveyed Remainder
Section 3
STATE OF ALASKA



DATES OF SURVEY
BEGINNING: OCTOBER 11, 2020
ENDING: SEPTEMBER 5, 2023

LINDSEY SUE VAUGHAN, PLS
GLOBAL POSITIONING SERVICES, INC.
2603 BLUEBERRY ROAD
ANCHORAGE, ALASKA 99503
PHONE No. (907) 569-2000
CERT. OF AUTHORIZATION No. AECC1346

STATE OF ALASKA
DEPARTMENT OF NATURAL RESOURCES
DIVISION OF MINING, LAND & WATER
ANCHORAGE, ALASKA

ALASKA STATE LAND SURVEY NO. 2019-19
KUPREANOF SHORES SUBDIVISION
A SUBDIVISION OF
PORTIONS OF GOVERNMENT LOT 1
LOCATED IN
SECTIONS 29, 32, 33, & 34, T25S, R24W, SM, AND
SECTIONS 26, 27, 35, & 36, T25S, R25W, SM,
AND SECTION-LINE EASEMENT VACATION

CREATING LOTS 1 THROUGH 28
CONTAINING 305.99 ACRES MORE OR LESS
KODIAK RECORDING DISTRICT

DRAWN BY: LLL/LSV
DATE: 10/2023
SCALE: 1" = 200'

APPROVAL RECOMMENDED
DATE: 12/7/2023
STATEWIDE PLATING SUPERVISOR
DNR FILE NO.
ASLS 20190019//EV-3-337



- LEGEND:**
- ⊕ PRIMARY MONUMENT RECOVERED
 - ⊙ PRIMARY MONUMENT SET THIS SURVEY
 - SECONDARY MONUMENT SET THIS SURVEY
 - PROTRACTED SECTION LINES
 - SURVEYED LINES
 - - - EASEMENT
 - - - TIE
 - - - ADDITIONAL MEANDERS
 - (JA) MONUMENT IDENTIFIER
 - () RECORD INFORMATION
 - MHWL MEAN HIGH WATER LINE

(JA)	ASLS 91-134 TR C C-1 16385 1991	CORNER C-1 OF TR. C, ASLS 91-134 FOUND ALUMINUM POST W/ AL. CAP FIRMLY SET, 1 INS. BELOW GRADE. BT 1 21" SPRUCE N. 17 1/4" E., 17.9 FT. BT 2 18" SPRUCE S. 14° E., 13.8 FT. BT 3 24" SPRUCE N. 82° W., 24.7 FT.
(KA)	ASLS 91-134 TR C C-2 16385 1991	CORNER C-2 OF TR. C, ASLS 91-134 FOUND ALUMINUM POST W/ AL. CAP FIRMLY SET, LEANING NORTHERLY, PROJ. 2 INS., STRAIGHTENED AND FIRMED BT 1 8" SPRUCE S. 4 1/2" E., 46.1 FT. BT 2 15" SPRUCE S. 48° W., 81.2 FT. BT 3 32" SPRUCE N. 58° W., 49.1 FT.
(LA)	ASLS 2019-19 WC S33 LS-12318 2023	SET AN ALUM. POST, 2 1/2 INS. DIAM. X 28 INS. LONG, 25 INS. IN THE GROUND, WITH AN ALUMINUM CAP, 3 1/4 INS. DIAM., MARKED AS SHOWN, WITH A MAGNET IN A CLEAR PLASTIC CASE DEPOSITED AT THE BASE OF THE MONUMENT CARSONITE WITNESS POST TO THE NORTH. BT 1 13" SPRUCE S. 57° W., 63.6 FT. BT 2 6" SPRUCE S. 89° W., 29.4 FT. BT 3 10" SPRUCE N. 12° W., 79.8 FT.

(MA)	T25S R24W S33 S3 T26S C-482 1986	1/4 CORNER OF SECTION 33 AND 4 FOUND ALUMINUM POST W/ AL. CAP OUT OF GROUND RESET ATOP ORIGINAL BASE, PROJ. 5 INS. RM 1 2" ALUM. CAP ON 5/8" REBAR S. 31°08'11" E., 24.90 FT. RM 2 2" ALUM. CAP ON 5/8" REBAR S. 89°45'40" W., 24.60 FT.
(NA)	ASLS 91-134 S33 TR D C-4 16385 1991	CORNER C-4 OF TR. D, ASLS 91-134 FOUND DISTURBED ALUMINUM POST W/ AL. CAP RESET FROM RM'S, FLUSH WITH GROUND RM 1 1 1/2" ALUM. CAP ON 5/8" REBAR S. 0°35'35" E., 9.64 FT. RM 2 1 1/2" ALUM. CAP ON 5/8" REBAR S. 0°36'24" E., 23.44 FT.
(OA)	ASLS 91-134 TR D C-3 16385 1991	WITNESS CORNER TO CORNER C-4 OF TR. D, ASLS 91-134. FOUND ALUMINUM POST W/ AL. CAP, LOOSELY SET PROJ. 3 INS. STRAIGHTENED AND FIRMED, PROJ. 1 INS. RM 1 1 1/2" ALUM. CAP ON 5/8" REBAR S. 88°38'53" E., 14.93 FT. RM 2 1 1/2" ALUM. CAP ON 5/8" REBAR S. 89°41'58" E., 28.71 FT.
(PA)	ASLS 91-134 TR D C-2 16385 1991	COR. 2, TR. D; COR. 3, TR. E, ASLS 91-134. FOUND ALUMINUM POST W/ AL. CAP, FIRMLY SET, FLUSH WITH GROUND, SUBMERGED IN WATER. BT 1 21" SPRUCE N. 88° E., 17.2 FT. BT 2 26" SPRUCE N. 42° W., 68.8 FT. BT 3 16" SPRUCE N. 13° W., 60.7 FT.