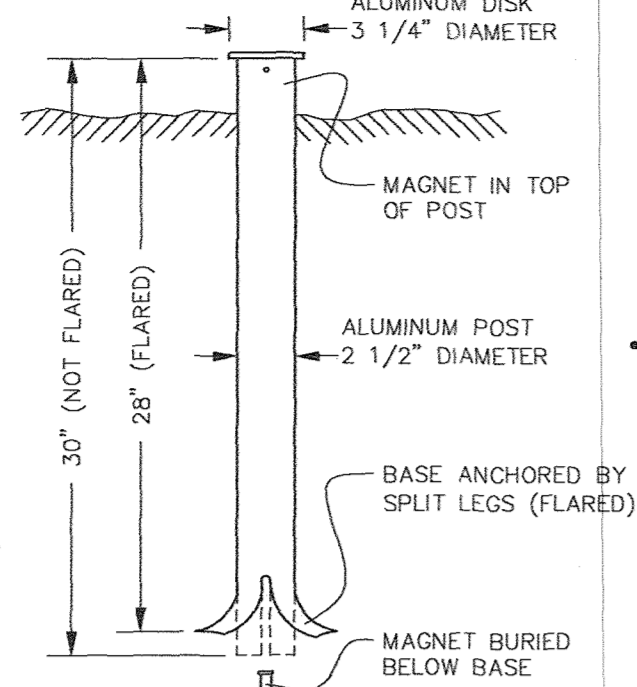
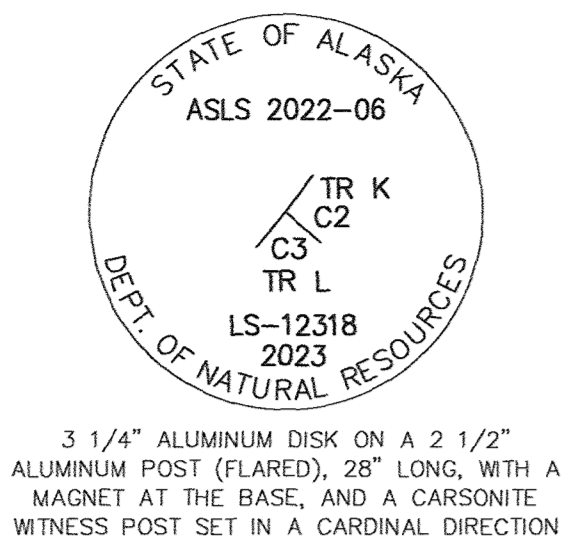
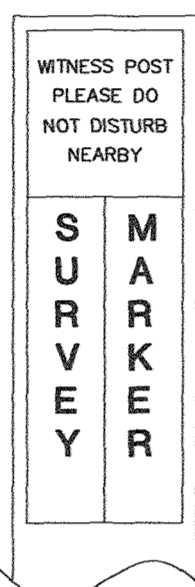


**TYPICAL PRIMARY MONUMENT
SET THIS SURVEY
(DIAGRAM NOT TO SCALE)**



**TYPICAL WITNESS POST
(DIAGRAM NOT TO SCALE)**

AN ORANGE FIBERGLASS REINFORCED CARSONITE POST, 6 FT. LONG SET AT A CARDINAL DIRECTION WITHIN 1 FT. OF ALL PRIMARY MONUMENTS



**TYPICAL SECONDARY MONUMENT
SET THIS SURVEY**

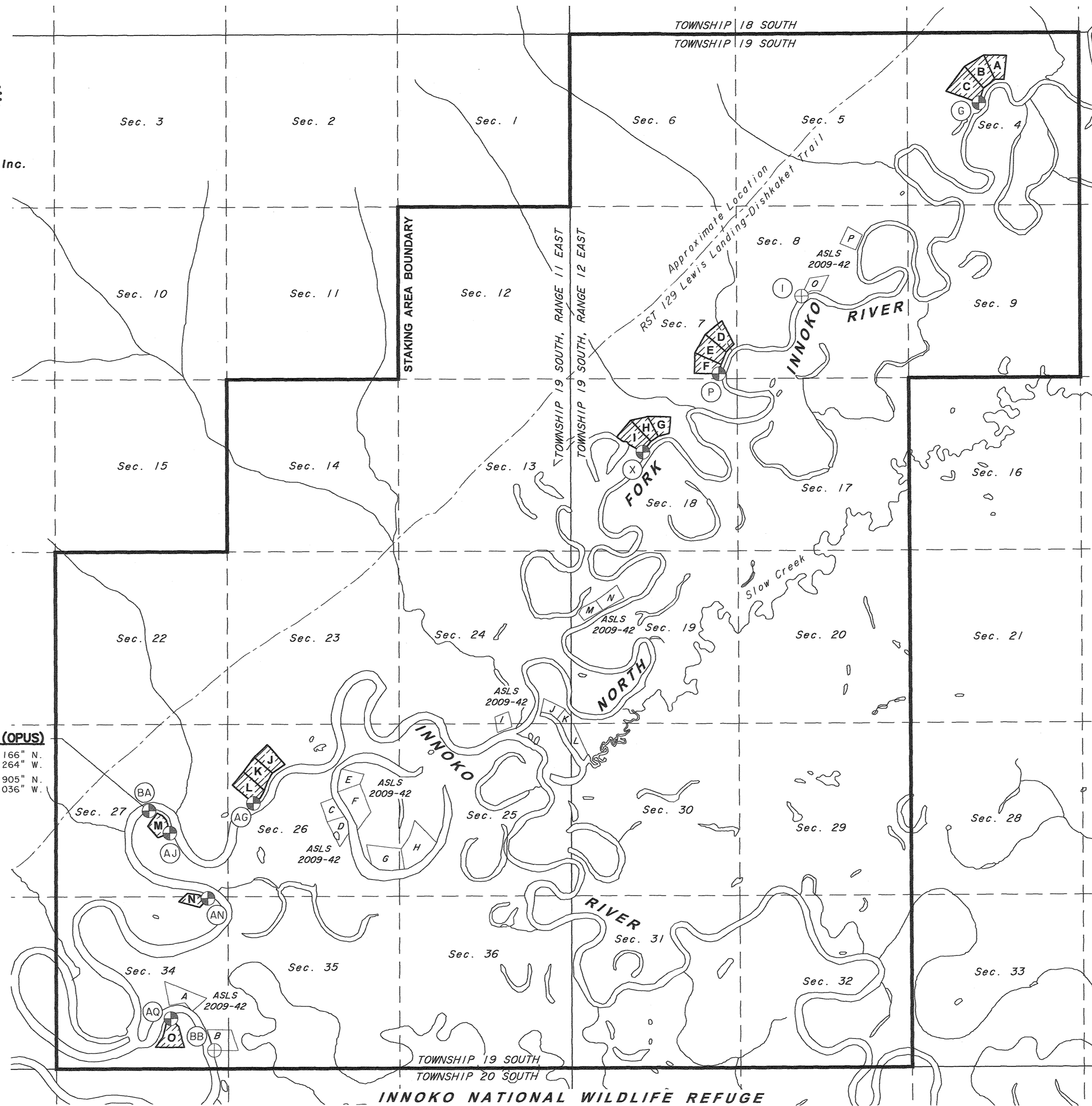


**TYPICAL BEARING TREE TAG
A YELLOW 4 1/2" X 6" ALUMINUM TAG
SET AT EYE HEIGHT
TREES ARE NOT SCRIBED**

BEARING TREE

CORNER IS APPROXIMATELY
N80°W 12.2°
DIRECTION DISTANCE
T.19S R.12E SEC. 4
CORNER 1+4 TRACT B+C
POSTED BY GPS DATE 2023

**INNOKO RIVER II REMOTE RECREATIONAL CABIN SITES ASLS 2022-06
INDEX SHEET**



BASIS OF COORDINATES (OPUS)

NAD 27: Lat. 63° 48' 50.166" N.
Long. 156° 41' 27.264" W.
NAD 83: Lat. 63° 48' 47.905" N.
Long. 156° 41' 36.036" W.

GEODETIC TIES FROM BASIS OF COORDINATES (BA)

TRACT	COR	MON	MEAN GEODETIC BEARING	DISTANCE
C	C1	G	N. 49° 46' 21" E.	33,481.32'
F	C1	P	N. 52° 42' 37" E.	22,041.98'
I	C1	X	N. 54° 14' 25" E.	18,732.92'
L	C1	AG	N. 85° 56' 42" E.	3,216.89'
M	C1	AJ	S. 43° 33' 26" E.	938.85'
N	C1	AN	S. 34° 02' 59" E.	3,241.11'
O	C1	AQ	S. 6° 02' 57" E.	6,406.14'

SHEET INDEX

TRACT	ADL NO.	SHEET
A	-	2
B	-	2
C	-	2
D	-	3
E	-	3
F	-	3
G	-	3
H	-	3
I	-	3
J	-	4
K	-	4
L	-	4
M	ADL 233871	4
N	ADL 233557	5
O	ADL 233556	5

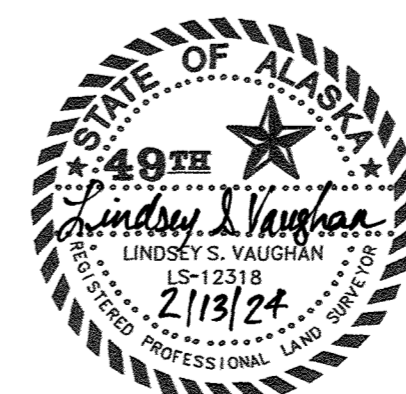
LEGEND:

- PRIMARY MONUMENT RECOVERED
- PRIMARY MONUMENT SET THIS SURVEY
- PROTRACTED SECTION LINES
- SURVEYED LINES
- SURVEY TIE
- ADDITIONAL MEANDERS
- MONUMENT IDENTIFIER

SURVEYOR'S CERTIFICATE

I HEREBY CERTIFY THAT I AM PROPERLY REGISTERED AND LICENSED TO PRACTICE LAND SURVEYING IN THE STATE OF ALASKA, THAT THIS PLAT REPRESENTS A SURVEY MADE BY ME OR UNDER MY DIRECT SUPERVISION, THAT THE MONUMENTS SHOWN HEREON ACTUALLY EXIST AS DESCRIBED, AND THAT ALL DIMENSIONS AND OTHER DETAILS ARE CORRECT.

DATE 2/13/24
LINDSEY SUE VAUGHAN
REGISTERED LAND SURVEYOR NO. LS-12318



VICINITY MAP

USGS QUAD. OPHIR (D-2) REV. 1954

SCALE 1" = 1 MILE

CERTIFICATE OF OWNERSHIP AND DEDICATION

I, THE UNDERSIGNED, HEREBY CERTIFY THAT I AM THE DIRECTOR, DIVISION OF MINING, LAND AND WATER AND THAT THE STATE OF ALASKA IS THE OWNER OF ASLS NO. 2022-06, AS SHOWN HEREON. I HEREBY APPROVE THIS SURVEY AND PLAT FOR THE STATE OF ALASKA, AND DEDICATE FOR PUBLIC OR PRIVATE USE AS NOTED, ALL EASEMENTS, PUBLIC UTILITY AREAS, AND RIGHTS-OF-WAY AS SHOWN AND DESCRIBED HEREON.

DATE 7/10/2024
FOR DIRECTOR, DIVISION OF MINING, LAND AND WATER

NOTARY'S ACKNOWLEDGEMENT

SUBSCRIBED AND SWORN TO BEFORE ME THIS 10th DAY OF July, 2024.

FOR: Geraldyn M. Bennett

NOTARY PUBLIC FOR ALASKA
MY COMMISSION EXPIRES WITH OFFICE



PLAT APPROVAL CERTIFICATE

THIS PLAT IS APPROVED BY THE COMMISSIONER OF THE DEPARTMENT OF NATURAL RESOURCES, OR THE COMMISSIONER'S DESIGNEE, IN ACCORDANCE WITH AS 40.15.

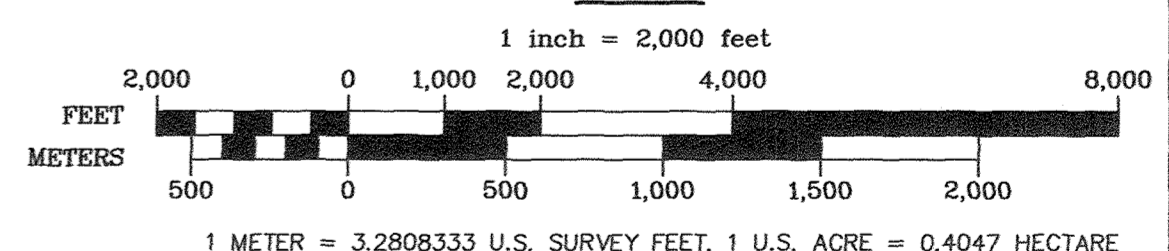
DATE 7/10/2024
COMMISSIONER

BY APPROVAL OF THIS PLAT, THE COMMISSIONER OF THE DEPARTMENT OF NATURAL RESOURCES HEREBY ACCEPTS FOR PUBLIC USE AND PUBLIC PURPOSES THE REAL PROPERTY DEDICATED TO THE PUBLIC HEREON, INCLUDING EASEMENTS, RIGHTS-OF-WAY, ALLEYS, AND ROADWAYS. THE ACCEPTANCE OF SUCH DEDICATED AREAS FOR PUBLIC USE AND PUBLIC PURPOSES DOES NOT OBLIGATE THE DEPARTMENT, ANY GOVERNING BODY, OR THE PUBLIC TO CONSTRUCT, OPERATE, MAINTAIN OR MANAGE IMPROVEMENTS.

TAX CERTIFICATE

THIS SUBDIVISION LIES OUTSIDE OF ANY TAXING AUTHORITY, AT THE TIME OF FILING.

SCALE



1 METER = 3.2808333 U.S. SURVEY FEET, 1 U.S. ACRE = 0.4047 HECTARE

DATES OF SURVEY BEGINNING: JUNE 24, 2023
ENDING: JULY 2, 2023
LINDSEY SUE VAUGHAN, PLS
GLOBAL POSITIONING SERVICES, INC.
2603 BLUEBERRY ROAD
ANCHORAGE, ALASKA 99503
PHONE No. (907) 569-2000
CERT. OF AUTHORIZATION NO. AECC1346

STATE OF ALASKA
DEPARTMENT OF NATURAL RESOURCES
DIVISION OF MINING, LAND & WATER
ANCHORAGE, ALASKA

ALASKA STATE LAND SURVEY NO. 2022-06

INNOKO RIVER II REMOTE RECREATIONAL CABIN SITES
CREATING TRACTS A THROUGH O
WITHIN UNSURVEYED SECTIONS 4, 7, & 18,
TOWNSHIP 19 SOUTH, RANGE 12 EAST,
AND UNSURVEYED SECTIONS 26, 27, & 34,
TOWNSHIP 19 SOUTH, RANGE 11 EAST,
KATEEL RIVER MERIDIAN, ALASKA

MT. MCKINLEY RECORDING DISTRICT

DRAWN BY: LLL
DATE: 10/24/2023
SCALE: 1" = 2,000'
APPROVAL RECOMMENDED
DATE: 7/9/24
STATEWIDE PLATING SUPERVISOR
CHECKED: LSV
DNR FILE NO.
ASLS 20220006

1
 2
 3
 4
 5
 6
 7
 8
 9
 10
 11
 12
 13
 14
 15
 16
 17
 18
 19
 20
 21
 22
 23
 24
 25
 26
 27
 28
 29
 30
 31
 32
 33
 34
 35
 36
 37
 38
 39
 40
 41
 42
 43
 44
 45
 46
 47
 48
 49
 50
 51
 52
 53
 54
 55
 56
 57
 58
 59
 60
 61
 62
 63
 64
 65
 66
 67
 68
 69
 70
 71
 72
 73
 74
 75
 76
 77
 78
 79
 80
 81
 82
 83
 84
 85
 86
 87
 88
 89
 90
 91
 92
 93
 94
 95
 96
 97
 98
 99
 100
 101
 102
 103
 104
 105
 106
 107
 108
 109
 110
 111
 112
 113
 114
 115
 116
 117
 118
 119
 120
 121
 122
 123
 124
 125
 126
 127
 128
 129
 130
 131
 132
 133
 134
 135
 136
 137
 138
 139
 140
 141
 142
 143
 144
 145
 146
 147
 148
 149
 150
 151
 152
 153
 154
 155
 156
 157
 158
 159
 160
 161
 162
 163
 164
 165
 166
 167
 168
 169
 170
 171
 172
 173
 174
 175
 176
 177
 178
 179
 180
 181
 182
 183
 184
 185
 186
 187
 188
 189
 190
 191
 192
 193
 194
 195
 196
 197
 198
 199
 200
 201
 202
 203
 204
 205
 206
 207
 208
 209
 210
 211
 212
 213
 214
 215
 216
 217
 218
 219
 220
 221
 222
 223
 224
 225
 226
 227
 228
 229
 230
 231
 232
 233
 234
 235
 236
 237
 238
 239
 240
 241
 242
 243
 244
 245
 246
 247
 248
 249
 250
 251
 252
 253
 254
 255
 256
 257
 258
 259
 260
 261
 262
 263
 264
 265
 266
 267
 268
 269
 270
 271
 272
 273
 274
 275
 276
 277
 278
 279
 280
 281
 282
 283
 284
 285
 286
 287
 288
 289
 290
 291
 292
 293
 294
 295
 296
 297
 298
 299
 300
 301
 302
 303
 304
 305
 306
 307
 308
 309
 310
 311
 312
 313
 314
 315
 316
 317
 318
 319
 320
 321
 322
 323
 324
 325
 326
 327
 328
 329
 330
 331
 332
 333
 334
 335
 336
 337
 338
 339
 340
 341
 342
 343
 344
 345
 346
 347
 348
 349
 350
 351
 352
 353
 354
 355
 356
 357
 358
 359
 360
 361
 362
 363
 364
 365
 366
 367
 368
 369
 370
 371
 372
 373
 374
 375
 376
 377
 378
 379
 380
 381
 382
 383
 384
 385
 386
 387
 388
 389
 390
 391
 392
 393
 394
 395
 396
 397
 398
 399
 400
 401
 402
 403
 404
 405
 406
 407
 408
 409
 410
 411
 412
 413
 414
 415
 416
 417
 418
 419
 420
 421
 422
 423
 424
 425
 426
 427
 428
 429
 430
 431
 432
 433
 434
 435
 436
 437
 438
 439
 440
 441
 442
 443
 444
 445
 446
 447
 448
 449
 450
 451
 452
 453
 454
 455
 456
 457
 458
 459
 460
 461
 462
 463
 464
 465
 466
 467
 468
 469
 470
 471
 472
 473
 474
 475
 476
 477
 478
 479
 480
 481
 482
 483
 484
 485
 486
 487
 488
 489
 490
 491
 492
 493
 494
 495
 496
 497
 498
 499
 500
 501
 502
 503
 504
 505
 506
 507
 508
 509
 510
 511
 512
 513
 514
 515
 516
 517
 518
 519
 520
 521
 522
 523
 524
 525

Protracted Township Line

NORTH FORK INNOKO RIVER

445
S 53° 19' 52"

TRACTS A

(A)	ASLS 20
	C3 TRA

SHEET 2 OF 5

TRACTS D, E, & F MONUMENT INFORMATION

J	ASLS 2022-06 C3 TRD LS 12318 2023	TRACT D, CORNER 3 SET AN ALUMINUM POST, 2 1/2 INS. DIAM., 28 INS. LONG, 26 INS. IN THE GROUND, WITH AN ALUMINUM CAP, 3 1/4 INS. DIAM., MARKED AS SHOWN, WITH A MAGNET IN A CLEAR PLASTIC CASE DEPOSITED AT THE BASE OF THE MONUMENT AND A CARSONITE WITNESS POST TO THE NORTH.	N	ASLS 2022-06 TRE C2 C3 TRF LS 12318 2023	TRACT E, CORNER 2; TRACT F, CORNER 3 SET AN ALUMINUM POST, 2 1/2 INS. DIAM., 28 INS. LONG, 26 INS. IN THE GROUND, WITH AN ALUMINUM CAP, 3 1/4 INS. DIAM., MARKED AS SHOWN, WITH A MAGNET IN A CLEAR PLASTIC CASE DEPOSITED AT THE BASE OF THE MONUMENT AND A CARSONITE WITNESS POST TO THE NORTH.
		BT 1 5" TAMARACK N. 19° E. 57.7 FT.			BT 1 5" SPRUCE S. 78° E. 19.9 FT.
		BT 2 4" SPRUCE S. 89° E. 26.9 FT.			BT 2 4" SPRUCE S. 59° W. 5.8 FT.
K	ASLS 2022-06 WC TRD C4 TRF LS 12318 2023	TRACT D, WITNESS CORNER TO CORNER 4 SET AN ALUMINUM POST, 2 1/2 INS. DIAM., 28 INS. LONG, 26 INS. IN THE GROUND, WITH AN ALUMINUM CAP, 3 1/4 INS. DIAM., MARKED AS SHOWN, WITH A MAGNET IN A CLEAR PLASTIC CASE DEPOSITED AT THE BASE OF THE MONUMENT AND A CARSONITE WITNESS POST TO THE NORTH.	O	ASLS 2022-06 TRE C1 C4 TRF LS 12318 2023	TRACT E, CORNER 1; TRACT F, CORNER 4 SET AN ALUMINUM POST, 2 1/2 INS. DIAM., 28 INS. LONG, 26 INS. IN THE GROUND, WITH AN ALUMINUM CAP, 3 1/4 INS. DIAM., MARKED AS SHOWN, WITH A MAGNET IN A CLEAR PLASTIC CASE DEPOSITED AT THE BASE OF THE MONUMENT AND A CARSONITE WITNESS POST TO THE NORTH.
		BT 1 5" BIRCH N. 87° E. 6.0 FT.			BT 1 5" SPRUCE N. 52° E. 9.5 FT.
		BT 2 8" SPRUCE S. 27° E. 29.9 FT.			BT 2 8" SPRUCE S. 18° E. 25.0 FT.
L	ASLS 2022-06 TRD C1 C4 TRF LS 12318 2023	TRACT D, CORNER 1; TRACT E, CORNER 4 SET AN ALUMINUM POST, 2 1/2 INS. DIAM., 28 INS. LONG, 26 INS. IN THE GROUND, WITH AN ALUMINUM CAP, 3 1/4 INS. DIAM., MARKED AS SHOWN, WITH A MAGNET IN A CLEAR PLASTIC CASE DEPOSITED AT THE BASE OF THE MONUMENT AND A CARSONITE WITNESS POST TO THE NORTH.	P	ASLS 2022-06 TRF C1 LS 12318 2023	TRACT F, CORNER 1 SET AN ALUMINUM POST, 2 1/2 INS. DIAM., 28 INS. LONG, 26 INS. IN THE GROUND, WITH AN ALUMINUM CAP, 3 1/4 INS. DIAM., MARKED AS SHOWN, WITH A MAGNET IN A CLEAR PLASTIC CASE DEPOSITED AT THE BASE OF THE MONUMENT AND A CARSONITE WITNESS POST TO THE NORTH.
		BT 1 6" SPRUCE N. 13° E. 12.6 FT.			BT 1 5" SPRUCE N. 24° E. 26.0 FT.
		BT 2 7" SPRUCE S. 52° E. 3.9 FT.			BT 2 11" SPRUCE S. 40° E. 13.3 FT.
M	ASLS 2022-06 C2 TRD C3 TRE LS 12318 2023	TRACT D, CORNER 2; TRACT E, CORNER 3 SET AN ALUMINUM POST, 2 1/2 INS. DIAM., 28 INS. LONG, 26 INS. IN THE GROUND, WITH AN ALUMINUM CAP, 3 1/4 INS. DIAM., MARKED AS SHOWN, WITH A MAGNET IN A CLEAR PLASTIC CASE DEPOSITED AT THE BASE OF THE MONUMENT AND A CARSONITE WITNESS POST TO THE NORTH.	Q	ASLS 2022-06 TRF C2 LS 12318 2023	TRACT F, CORNER 2 SET AN ALUMINUM POST, 2 1/2 INS. DIAM., 28 INS. LONG, 26 INS. IN THE GROUND, WITH AN ALUMINUM CAP, 3 1/4 INS. DIAM., MARKED AS SHOWN, WITH A MAGNET IN A CLEAR PLASTIC CASE DEPOSITED AT THE BASE OF THE MONUMENT AND A CARSONITE WITNESS POST TO THE NORTH.
		BT 1 4" SPRUCE N. 35° E. 13.1 FT.			BT 1 4" SPRUCE N. 8° E. 21.0 FT.
		BT 2 6" SPRUCE S. 33° E. 18.3 FT.			BT 2 4" SPRUCE S. 87° E. 19.0 FT.
		BT 3 6" SPRUCE N. 85° W. 20.7 FT.			BT 3 4" SPRUCE S. 8° W. 4.8 FT.

NOTE:
THERE ARE NO LESSEES FOR TRACT D, TRACT E, AND TRACT F.

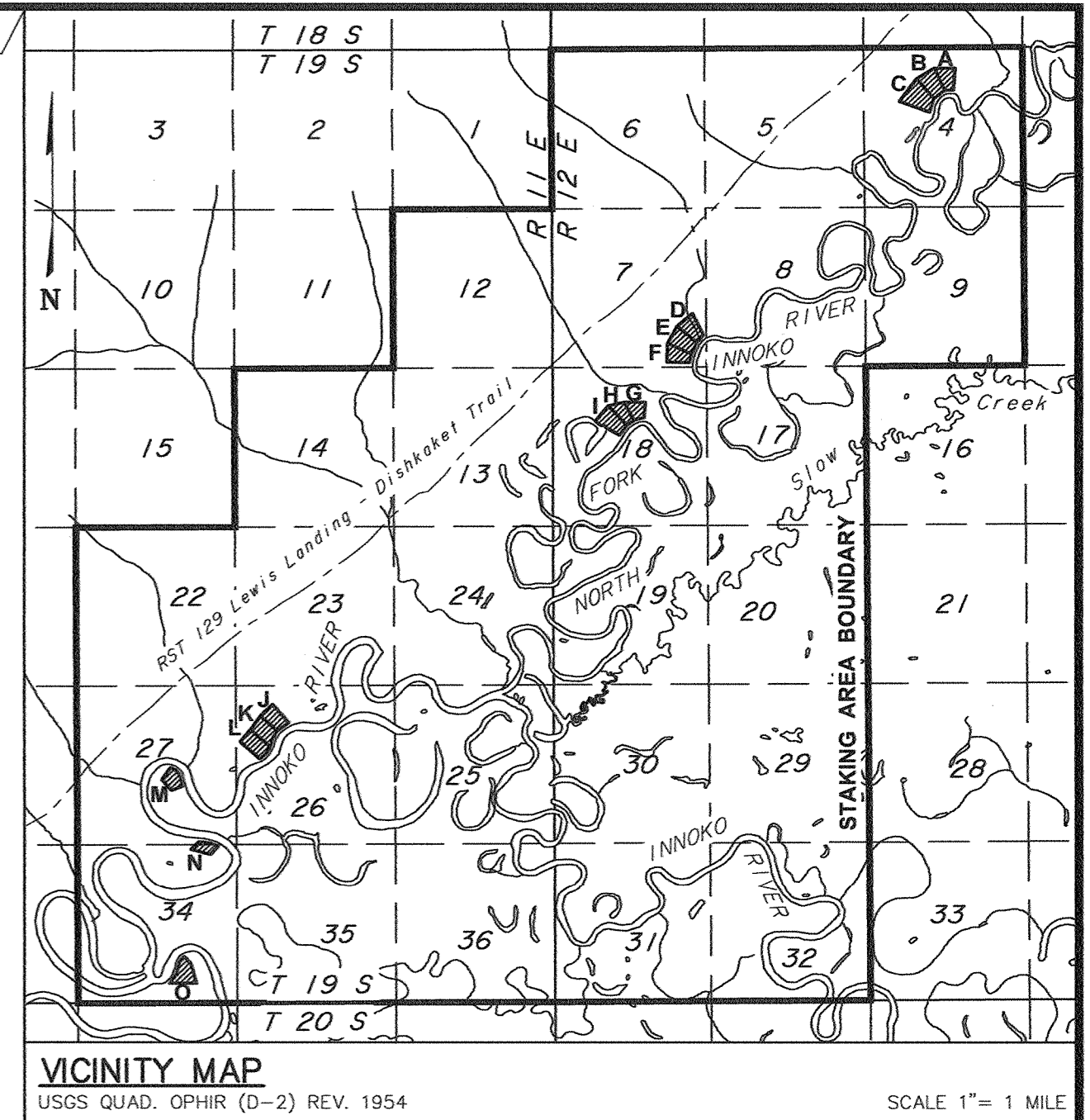
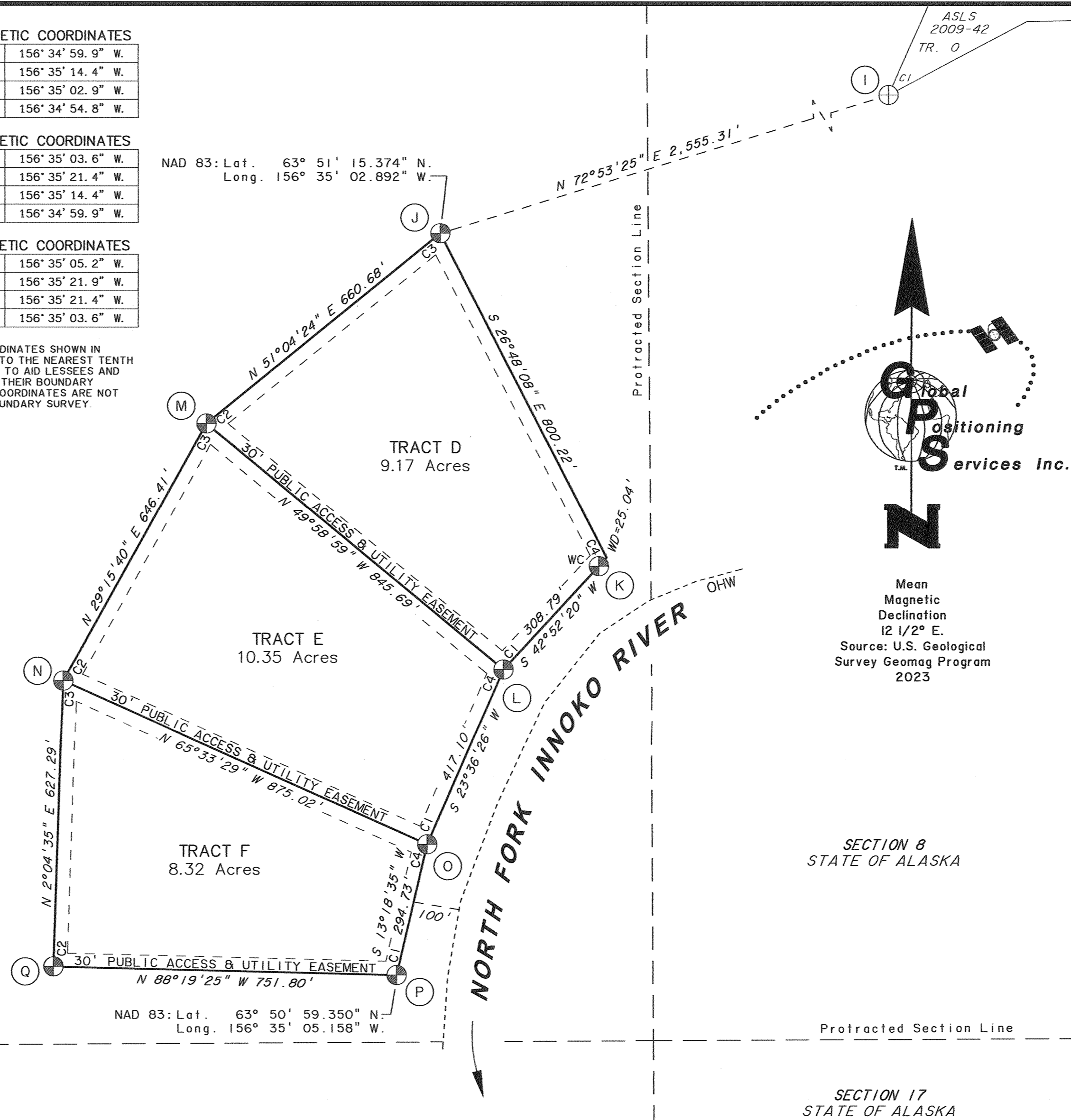
TRACT D, NAD 83 GEODETIC COORDINATES			
C1	63° 51' 05.9" N.	156° 34' 59.9" W.	
C2	63° 51' 11.3" N.	156° 35' 14.4" W.	
C3	63° 51' 15.4" N.	156° 35' 02.9" W.	
C4	63° 51' 08.3" N.	156° 34' 54.8" W.	

TRACT E, NAD 83 GEODETIC COORDINATES			
C1	63° 51' 02.2" N.	156° 35' 03.6" W.	
C2	63° 51' 05.7" N.	156° 35' 21.9" W.	
C3	63° 51' 11.3" N.	156° 35' 14.4" W.	
C4	63° 51' 05.9" N.	156° 34' 59.9" W.	

TRACT F, NAD 83 GEODETIC COORDINATES			
C1	63° 50' 59.3" N.	156° 35' 05.2" W.	
C2	63° 50' 59.6" N.	156° 35' 21.9" W.	
C3	63° 51' 05.7" N.	156° 35' 21.4" W.	
C4	63° 51' 02.2" N.	156° 35' 03.6" W.	

NOTE: NAD 83 GEODETIC COORDINATES SHOWN IN THESE TABLES ARE ROUNDED TO THE NEAREST TENTH OF A SECOND AND ARE LISTED TO AID LESSEES AND PROPERTY OWNERS IN FINDING THEIR BOUNDARY CORNER MONUMENTS. THESE COORDINATES ARE NOT INTENDED TO BE USED FOR BOUNDARY SURVEY.

SECTION 7
STATE OF ALASKA



RECOVERED MONUMENT INFORMATION

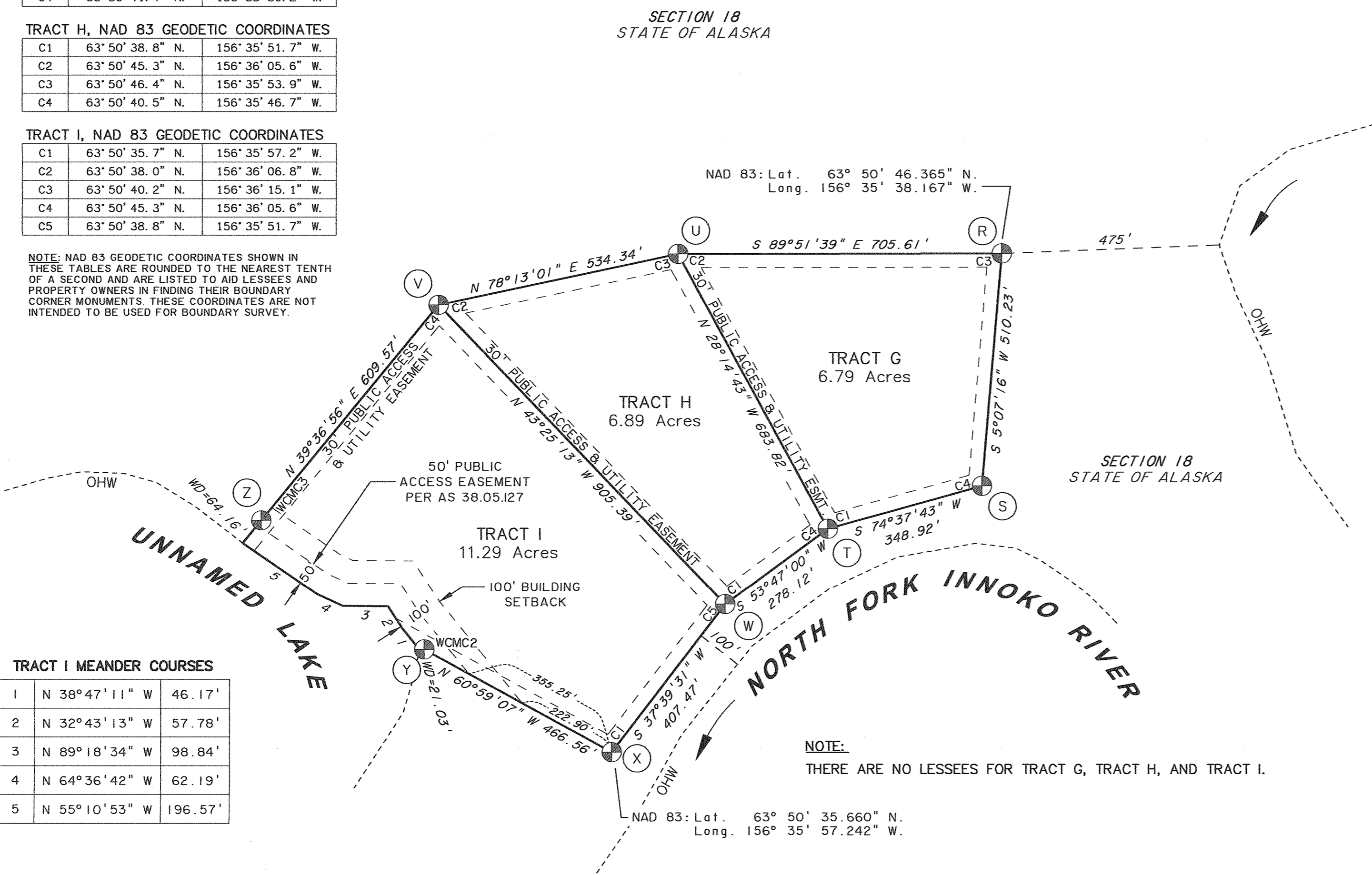
<div>1</div>	<div>STATE OF ALASKA ASLS 2009-42 TRO LS 2087 2011 DEPT. OF NATURAL RESOURCES</div>	TRACT O, CORNER 1, ASLS 2009-42 FOUND AN ALUMINUM POST, 2 1/2 INS. DIAM., WITH AN ALUMINUM CAP, MARKED AS SHOWN, FIRMLY SET, LEANING SIGNIFICANTLY TO THE SOUTH, PROJECTING 4 INS. OUT OF THE GROUND. STRAIGHTENED MONUMENT TO PROJECT 4 INS. OUT OF THE GROUND.	
		BT 1	4" SPRUCE N. 55° E., 7.5 FT. WITH BEARING TREE TAG ALONGSIDE, RE-HUNG
		BT 2	4" SPRUCE S. 22° E., 3.4 FT. ADDED NEW BEARING TREE TAG
		BT 3	4" SPRUCE S. 63° W., 6.0 FT. WITH BEARING TREE TAG

TRACT G, NAD 83 GEODETIC COORDINATES			
C1	63° 50' 40.5" N.	156° 35' 46.7" W.	
C2	63° 50' 46.4" N.	156° 35' 53.9" W.	
C3	63° 50' 46.4" N.	156° 35' 38.2" W.	
C4	63° 50' 41.4" N.	156° 35' 39.2" W.	

TRACT H, NAD 83 GEODETIC COORDINATES			
C1	63° 50' 38.8" N.	156° 35' 51.7" W.	
C2	63° 50' 45.3" N.	156° 36' 05.6" W.	
C3	63° 50' 46.4" N.	156° 35' 53.9" W.	
C4	63° 50' 40.5" N.	156° 35' 46.7" W.	

TRACT I, NAD 83 GEODETIC COORDINATES			
C1	63° 50' 35.7" N.	156° 35' 57.2" W.	
C2	63° 50' 38.0" N.	156° 36' 06.8" W.	
C3	63° 50' 40.2" N.	156° 36' 15.1" W.	
C4	63° 50' 45.3" N.	156° 36' 05.6" W.	
C5	63° 50' 38.8" N.	156° 35' 51.7" W.	

NOTE: NAD 83 GEODETIC COORDINATES SHOWN IN THESE TABLES ARE ROUNDED TO THE NEAREST TENTH OF A SECOND AND ARE LISTED TO AID LESSEES AND PROPERTY OWNERS IN FINDING THEIR BOUNDARY CORNER MONUMENTS. THESE COORDINATES ARE NOT INTENDED TO BE USED FOR BOUNDARY SURVEY.

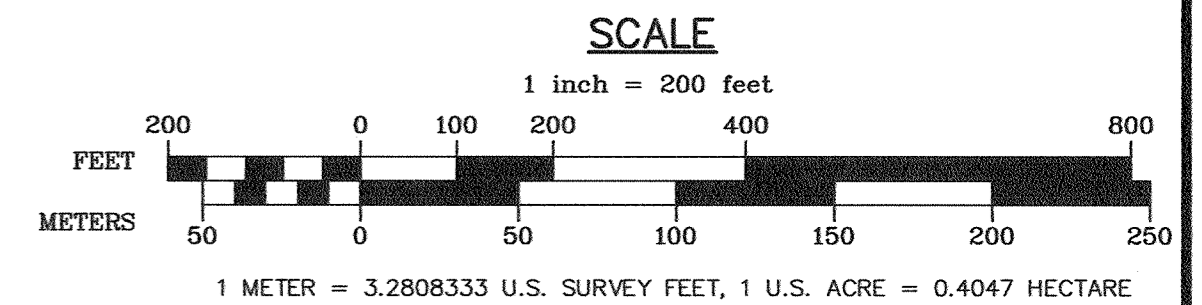


TRACTS H, I, & J MONUMENT INFORMATION

R	ASLS 2022-06 C3 TRG LS 12318 2023	TRACT G, CORNER 3 SET AN ALUMINUM POST, 2 1/2 INS. DIAM., 28 INS. LONG, 26 INS. IN THE GROUND, WITH AN ALUMINUM CAP, 3 1/4 INS. DIAM., MARKED AS SHOWN, WITH A MAGNET IN A CLEAR PLASTIC CASE DEPOSITED AT THE BASE OF THE MONUMENT AND A CARSONITE WITNESS POST TO THE NORTH.	W	ASLS 2022-06 TRH C1 C3 TRI LS 12318 2023	TRACT H, CORNER 1; TRACT I, CORNER 5 SET AN ALUMINUM POST, 2 1/2 INS. DIAM., 28 INS. LONG, 26 INS. IN THE GROUND, WITH AN ALUMINUM CAP, 3 1/4 INS. DIAM., MARKED AS SHOWN, WITH A MAGNET IN A CLEAR PLASTIC CASE DEPOSITED AT THE BASE OF THE MONUMENT AND A CARSONITE WITNESS POST TO THE NORTH.
		BT 1 6" BIRCH N. 68° E. 27.6 FT.			BT 1 5" SPRUCE N. 34° E. 19.4 FT.
		BT 2 5" BIRCH S. 39° W. 12.8 FT.			BT 2 4" SPRUCE S. 15° E. 10.1 FT.
S	ASLS 2022-06 TRG C4 LS 12318 2023	TRACT G, CORNER 4 SET AN ALUMINUM POST, 2 1/2 INS. DIAM., 28 INS. LONG, 26 INS. IN THE GROUND, WITH AN ALUMINUM CAP, 3 1/4 INS. DIAM., MARKED AS SHOWN, WITH A MAGNET IN A CLEAR PLASTIC CASE DEPOSITED AT THE BASE OF THE MONUMENT AND A CARSONITE WITNESS POST TO THE NORTH.	X	ASLS 2022-06 TRI C1 LS 12318 2023	TRACT I, CORNER 1 SET AN ALUMINUM POST, 2 1/2 INS. DIAM., 28 INS. LONG, 26 INS. IN THE GROUND, WITH AN ALUMINUM CAP, 3 1/4 INS. DIAM., MARKED AS SHOWN, WITH A MAGNET IN A CLEAR PLASTIC CASE DEPOSITED AT THE BASE OF THE MONUMENT AND A CARSONITE WITNESS POST TO THE NORTH.
		BT 1 8" SPRUCE N. 57° E. 44.9 FT.			BT 1 5" SPRUCE S. 76° E. 28.1 FT.
		BT 2 14" SPRUCE S. 6° E. 31.6 FT.			BT 2 4" SPRUCE S. 35° W. 17.3 FT.
T	ASLS 2022-06 TRG C1 TRH C1 LS 12318 2023	TRACT G, CORNER 1; TRACT H, CORNER 4 SET AN ALUMINUM POST, 2 1/2 INS. DIAM., 28 INS. LONG, 26 INS. IN THE GROUND, WITH AN ALUMINUM CAP, 3 1/4 INS. DIAM., MARKED AS SHOWN, WITH A MAGNET IN A CLEAR PLASTIC CASE DEPOSITED AT THE BASE OF THE MONUMENT AND A CARSONITE WITNESS POST TO THE NORTH.	Y	ASLS 2022-06 WC TRH C1 C2 TRI LS 12318 2023	TRACT I, WITNESS CORNER MEANDER CORNER 2 SET AN ALUMINUM POST, 2 1/2 INS. DIAM., 28 INS. LONG, 26 INS. IN THE GROUND, WITH AN ALUMINUM CAP, 3 1/4 INS. DIAM., MARKED AS SHOWN, WITH A MAGNET IN A CLEAR PLASTIC CASE DEPOSITED AT THE BASE OF THE MONUMENT AND A CARSONITE WITNESS POST TO THE NORTH.
		BT 1 5" SPRUCE S. 68° E. 16.5 FT.			BT 1 14" SPRUCE N. 71° E. 27.0 FT.
		BT 2 7" SPRUCE S. 69° W. 21.6 FT.			BT 2 23" SPRUCE S. 4° E. 25.5 FT.
U	ASLS 2022-06 C3 TRG C4 TRH LS 12318 2023	TRACT G, CORNER 2; TRACT H, CORNER 3 SET AN ALUMINUM POST, 2 1/2 INS. DIAM., 28 INS. LONG, 26 INS. IN THE GROUND, WITH AN ALUMINUM CAP, 3 1/4 INS. DIAM., MARKED AS SHOWN, WITH A MAGNET IN A CLEAR PLASTIC CASE DEPOSITED AT THE BASE OF THE MONUMENT AND A CARSONITE WITNESS POST TO THE NORTH.	Z	ASLS 2022-06 WC TRH C1 C2 TRI LS 12318 2023	TRACT I, WITNESS CORNER MEANDER CORNER 3 SET AN ALUMINUM POST, 2 1/2 INS. DIAM., 28 INS. LONG, 26 INS. IN THE GROUND, WITH AN ALUMINUM CAP, 3 1/4 INS. DIAM., MARKED AS SHOWN, WITH A MAGNET IN A CLEAR PLASTIC CASE DEPOSITED AT THE BASE OF THE MONUMENT AND A CARSONITE WITNESS POST TO THE NORTH.
		BT 1 4" SPRUCE N. 27° E. 17.6 FT.			BT 1 4" SPRUCE N. 26° E. 8.5 FT.
		BT 2 5" SPRUCE S. 43° E. 20.3 FT.			BT 2 5" SPRUCE S. 40° E. 12.3 FT.
V	ASLS 2022-06 C3 TRG C4 TRH LS 12318 2023	TRACT H, CORNER 2; TRACT I, CORNER 4 SET AN ALUMINUM POST, 2 1/2 INS. DIAM., 28 INS. LONG, 26 INS. IN THE GROUND, WITH AN ALUMINUM CAP, 3 1/4 INS. DIAM., MARKED AS SHOWN, WITH A MAGNET IN A CLEAR PLASTIC CASE DEPOSITED AT THE BASE OF THE MONUMENT AND A CARSONITE WITNESS POST TO THE NORTH.			TRACT I, CORNER 4 SET AN ALUMINUM POST, 2 1/2 INS. DIAM., 28 INS. LONG, 26 INS. IN THE GROUND, WITH AN ALUMINUM CAP, 3 1/4 INS. DIAM., MARKED AS SHOWN, WITH A MAGNET IN A CLEAR PLASTIC CASE DEPOSITED AT THE BASE OF THE MONUMENT AND A CARSONITE WITNESS POST TO THE NORTH.
		BT 1 4" SPRUCE N. 27° E. 17.6 FT.			BT 1 4" SPRUCE N. 26° E. 8.5 FT.
		BT 2 5" SPRUCE S. 43° E. 20.3 FT.			BT 2 5" SPRUCE S. 40° E. 12.3 FT.
		BT 3 6" SPRUCE S. 49° W. 25.3 FT.			BT 3 5" SPRUCE S. 69° W. 12.7 FT.

LEGEND:

- ⊕ PRIMARY MONUMENT RECOVERED
- ⊕ PRIMARY MONUMENT SET THIS SURVEY
- PROTRACTED SECTION LINES
- SURVEYED LINES
- SURVEY TIE
- ADDITIONAL MEANDERS
- ⊙ MONUMENT IDENTIFIER
- OHW ORDINARY HIGH WATER



DATES OF SURVEY BEGINNING: JUNE 24, 2023 ENDING: JULY 2, 2023	LINDSEY SUE VAUGHAN, PLS GLOBAL POSITIONING SERVICES, INC. 2603 BLUEBERRY ROAD ANCHORAGE, ALASKA 99503 PHONE NO. (907) 569-2000 CERT. OF AUTHORIZATION NO. AECC1346
STATE OF ALASKA DEPARTMENT OF NATURAL RESOURCES DIVISION OF MINING, LAND & WATER ANCHORAGE, ALASKA	
ALASKA STATE LAND SURVEY NO. 2022-06	
INNOKO RIVER II REMOTE RECREATIONAL CABIN SITES CREATING TRACTS A THROUGH O WITHIN UNSURVEYED SECTIONS 4, 7, & 18, TOWNSHIP 19 SOUTH, RANGE 12 EAST, AND UNSURVEYED SECTIONS 26, 27, & 34, TOWNSHIP 19 SOUTH, RANGE 11 EAST, KATEL RIVER MERIDIAN, ALASKA	
MT. MCKINLEY RECORDING DISTRICT	
DRAWN BY: LLL DATE: 10/24/2023 SCALE: 1" = 200'	APPROVAL RECOMMENDED Kara Buss 7/9/24 STATEWIDE PLANNING SUPERVISOR CHECKED: LSV DNR FILE NO. ASLS 20220006

Mt. McKinley Recording District 76-2024-1

SHEET 3 OF 5

TRACTS J, K, & L PRIMARY MONUMENT INFORMATION

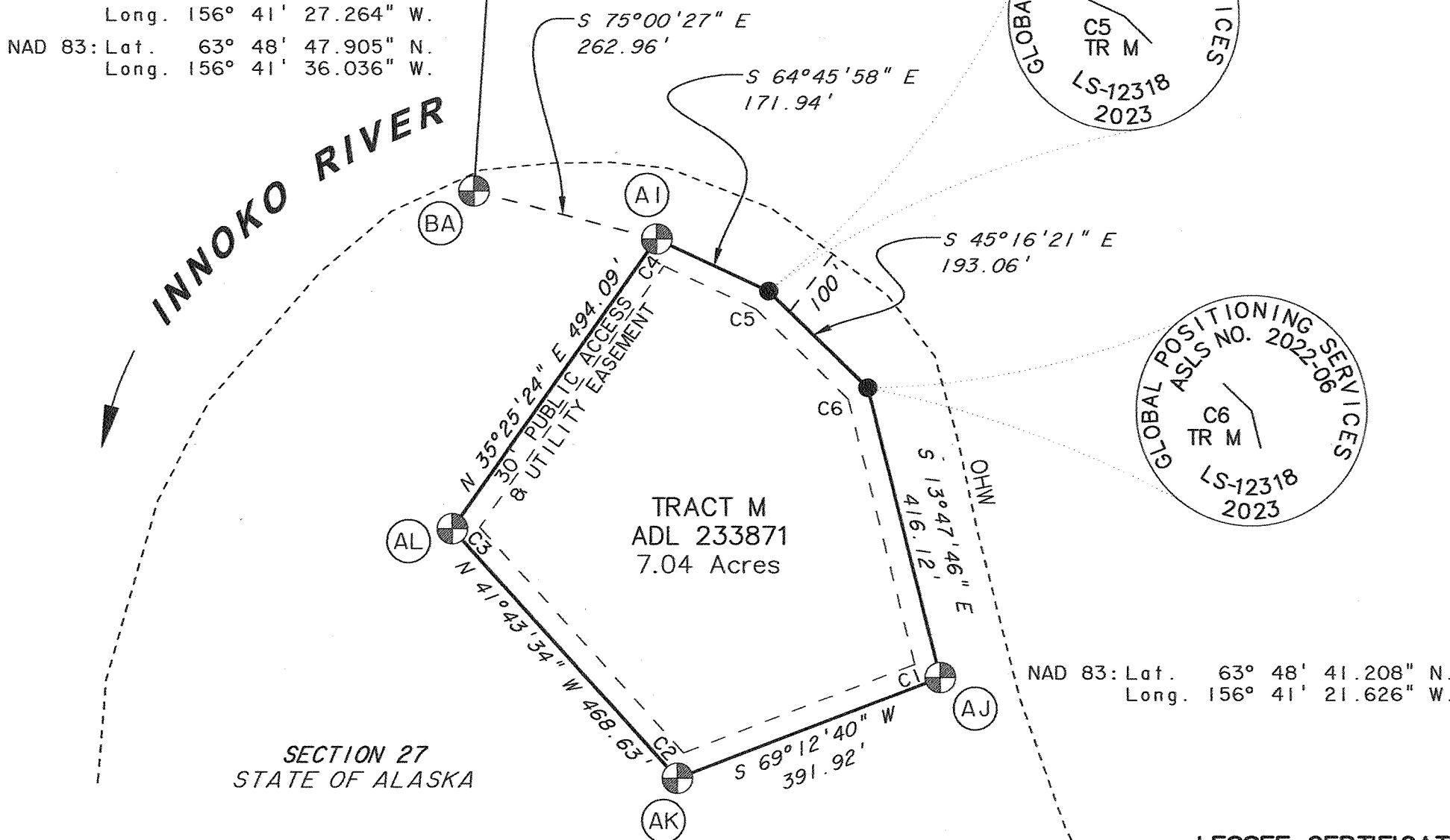
AA	ASLS 2022-06 C3 TRJ LS 12318 2023	TRACT J, CORNER 3 SET AN ALUMINUM POST, 2 1/2 INS. DIAM., 28 INS. LONG, 26 INS. IN THE GROUND, WITH AN ALUMINUM CAP, 3 1/4 INS. DIAM., MARKED AS SHOWN, WITH A MAGNET IN A CLEAR PLASTIC CASE DEPOSITED AT THE BASE OF THE MONUMENT AND A CARSONITE WITNESS POST TO THE NORTH.	AE	ASLS 2022-06 C3 TRK LS 12318 2023	TRACT K, CORNER 2; TRACT L, CORNER 3 SET AN ALUMINUM POST, 2 1/2 INS. DIAM., 28 INS. LONG, 26 INS. IN THE GROUND, WITH AN ALUMINUM CAP, 3 1/4 INS. DIAM., MARKED AS SHOWN, WITH A MAGNET IN A CLEAR PLASTIC CASE DEPOSITED AT THE BASE OF THE MONUMENT AND A CARSONITE WITNESS POST TO THE NORTH.
		BT 1 6" BIRCH N. 45° E. 23.5 FT. BT 2 8" BIRCH S. 57° E. 20.7 FT. BT 3 5" BIRCH S. 81° W. 15.0 FT.			BT 1 6" SPRUCE N. 19° E. 24.0 FT. BT 2 12" SPRUCE S. 31° E. 13.1 FT. BT 3 11" SPRUCE N. 55° W. 15.3 FT.
AB	ASLS 2022-06 C4 TRJ LS 12318 2023	TRACT J, CORNER 4 SET AN ALUMINUM POST, 2 1/2 INS. DIAM., 28 INS. LONG, 26 INS. IN THE GROUND, WITH AN ALUMINUM CAP, 3 1/4 INS. DIAM., MARKED AS SHOWN, WITH A MAGNET IN A CLEAR PLASTIC CASE DEPOSITED AT THE BASE OF THE MONUMENT AND A CARSONITE WITNESS POST TO THE NORTH.	AF	ASLS 2022-06 C4 TRK LS 12318 2023	TRACT K, CORNER 1; TRACT L, CORNER 4 SET AN ALUMINUM POST, 2 1/2 INS. DIAM., 28 INS. LONG, 26 INS. IN THE GROUND, WITH AN ALUMINUM CAP, 3 1/4 INS. DIAM., MARKED AS SHOWN, WITH A MAGNET IN A CLEAR PLASTIC CASE DEPOSITED AT THE BASE OF THE MONUMENT AND A CARSONITE WITNESS POST TO THE NORTH.
		BT 1 5" SPRUCE S. 62° E. 15.3 FT. BT 2 5" SPRUCE S. 24° W. 8.6 FT. BT 3 5" SPRUCE N. 12° W. 5.1 FT.			BT 1 7" BIRCH S. 85° E. 23.2 FT. BT 2 5" SPRUCE S. 48° W. 16.4 FT. BT 3 4" SPRUCE N. 49° W. 7.2 FT.
AC	ASLS 2022-06 C4 TRJ LS 12318 2023	TRACT J, CORNER 1; TRACT K, CORNER 4 SET AN ALUMINUM POST, 2 1/2 INS. DIAM., 28 INS. LONG, 26 INS. IN THE GROUND, WITH AN ALUMINUM CAP, 3 1/4 INS. DIAM., MARKED AS SHOWN, WITH A MAGNET IN A CLEAR PLASTIC CASE DEPOSITED AT THE BASE OF THE MONUMENT AND A CARSONITE WITNESS POST TO THE NORTH.	AG	ASLS 2022-06 C4 TRK LS 12318 2023	TRACT L, CORNER 1 SET AN ALUMINUM POST, 2 1/2 INS. DIAM., 28 INS. LONG, 25 INS. IN THE GROUND, WITH AN ALUMINUM CAP, 3 1/4 INS. DIAM., MARKED AS SHOWN, WITH A MAGNET IN A CLEAR PLASTIC CASE DEPOSITED AT THE BASE OF THE MONUMENT AND A CARSONITE WITNESS POST TO THE NORTH.
		BT 1 6" SPRUCE S. 56° E. 13.4 FT. BT 2 8" TAMARACK S. 70° W. 23.0 FT. BT 3 6" SPRUCE N. 15° W. 14.4 FT.			BT 1 6" WILLOW S. 52° E. 7.9 FT. BT 2 6" WILLOW N. 54° W. 24.4 FT. BT 3 6" WILLOW N. 2° W. 13.5 FT.
AD	ASLS 2022-06 C2 TRJ LS 12318 2023	TRACT J, CORNER 2; TRACT K, CORNER 3 SET AN ALUMINUM POST, 2 1/2 INS. DIAM., 28 INS. LONG, 26 INS. IN THE GROUND, WITH AN ALUMINUM CAP, 3 1/4 INS. DIAM., MARKED AS SHOWN, WITH A MAGNET IN A CLEAR PLASTIC CASE DEPOSITED AT THE BASE OF THE MONUMENT AND A CARSONITE WITNESS POST TO THE NORTH.	AH	ASLS 2022-06 C2 TRK LS 12318 2023	TRACT L, CORNER 2 SET AN ALUMINUM POST, 2 1/2 INS. DIAM., 28 INS. LONG, 26 INS. IN THE GROUND, WITH AN ALUMINUM CAP, 3 1/4 INS. DIAM., MARKED AS SHOWN, WITH A MAGNET IN A CLEAR PLASTIC CASE DEPOSITED AT THE BASE OF THE MONUMENT AND A CARSONITE WITNESS POST TO THE NORTH.
		BT 1 6" SPRUCE S. 44° E. 7.3 FT. BT 2 6" TAMARACK S. 48° W. 16.2 FT. BT 3 6" SPRUCE N. 1° W. 9.5 FT.			BT 1 13" BIRCH S. 78° E. 23.8 FT. BT 2 8" SPRUCE S. 12° W. 6.0 FT. BT 3 12" ASPEN N. 24° W. 10.5 FT.

BASIS OF COORDINATES MONUMENT INFORMATION

BA	STATE OF ALASKA ASLS 2022-06 GPS CP INNOKO P2 LS 12318 2023 DEPT. OF NATURAL RESOURCES	GPS CONTROL POINT, INNOKO P2, ASLS 2022-06 SET AN ALUMINUM POST, 2 1/2 INS. DIAM., 28 INS. LONG, 26 INS. IN THE GROUND, WITH AN ALUMINUM CAP, 3 1/4 INS. DIAM., MARKED AS SHOWN, WITH A MAGNET IN A CLEAR PLASTIC CASE DEPOSITED AT THE BASE OF THE MONUMENT AND AN ORANGE CARSONITE WITNESS POST TO THE NORTH. CORNER IS LOCATED ALONG THE LEFT BANK OF NORTH FORK INNOKO RIVER, APPROXIMATELY 25 FT. FROM THE WATER.

BASIS OF COORDINATES (OPUS)

NAD 27: Lat. 63° 48' 50.166" N.
Long. 156° 41' 27.264" W.
NAD 83: Lat. 63° 48' 47.905" N.
Long. 156° 41' 36.036" W.



TRACT M, NAD 83 GEODETIC COORDINATES	
C1	63° 48' 41.2" N. 156° 41' 21.6" W.
C2	63° 48' 39.8" N. 156° 41' 29.8" W.
C3	63° 48' 43.3" N. 156° 41' 36.7" W.
C4	63° 48' 47.2" N. 156° 41' 30.4" W.
C5	63° 48' 46.5" N. 156° 41' 26.9" W.
C6	63° 48' 45.2" N. 156° 41' 23.8" W.

NOTE: NAD 83 GEODETIC COORDINATES SHOWN IN THESE TABLES ARE ROUNDED TO THE NEAREST TENTH OF A SECOND AND ARE LISTED TO AID LESSEES AND PROPERTY OWNERS IN FINDING THEIR BOUNDARY CORNER MONUMENTS. THESE COORDINATES ARE NOT INTENDED TO BE USED FOR BOUNDARY SURVEY.



LESSEE CERTIFICATE

I, THE UNDERSIGNED, HEREBY CERTIFY THAT I AM THE LESSEE AS SHOWN HEREON. I HEREBY APPROVE THIS SURVEY AND PLAT.

TRACT M, AND ADL NO. 233871
Robert D. Yundt
ROBERT D. YUNDT
P.O. BOX 872453
WASILLA, AK 99687

NOTARY'S ACKNOWLEDGEMENT
SUBSCRIBED AND SWORN TO BEFORE ME THIS 9th DAY OF July, 2024.

FOR: Robert D. Yundt
LESSEE
Kevin Bow
NOTARY PUBLIC FOR ALASKA
MY COMMISSION EXPIRES With Office

TRACT M PRIMARY MONUMENT INFORMATION

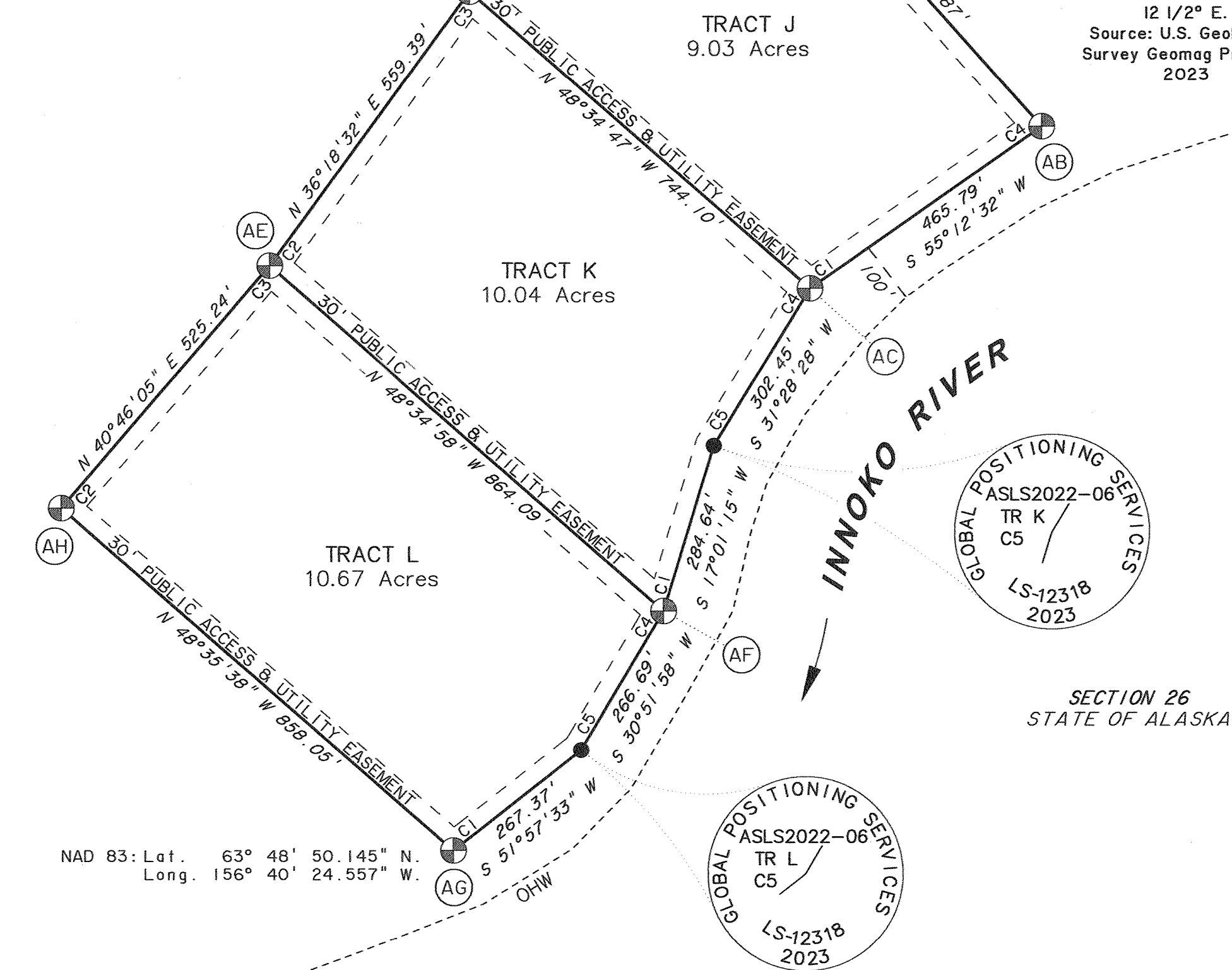
AI	ASLS 2022-06 C4 TRM LS 12318 2023	TRACT M, CORNER 4 SET AN ALUMINUM POST, 2 1/2 INS. DIAM., 28 INS. LONG, 26 INS. IN THE GROUND, WITH AN ALUMINUM CAP, 3 1/4 INS. DIAM., MARKED AS SHOWN, WITH A MAGNET IN A CLEAR PLASTIC CASE DEPOSITED AT THE BASE OF THE MONUMENT AND A CARSONITE WITNESS POST TO THE NORTH.	AK	ASLS 2022-06 C2 TRM LS 12318 2023	TRACT M, CORNER 2 SET AN ALUMINUM POST, 2 1/2 INS. DIAM., 28 INS. LONG, 26 INS. IN THE GROUND, WITH AN ALUMINUM CAP, 3 1/4 INS. DIAM., MARKED AS SHOWN, WITH A MAGNET IN A CLEAR PLASTIC CASE DEPOSITED AT THE BASE OF THE MONUMENT AND A CARSONITE WITNESS POST TO THE NORTH.
		BT 1 7" COTTONWOOD S. 47° E. 15.4 FT. BT 2 6" COTTONWOOD S. 66° W. 21.2 FT. BT 3 6" COTTONWOOD N. 34° E. 36.6 FT.			BT 1 11" BIRCH N. 66° E. 35.8 FT. BT 2 12" BIRCH S. 3° E. 29.2 FT. BT 3 13" BIRCH N. 51° W. 16.8 FT.
AJ	ASLS 2022-06 C1 TRM LS 12318 2023	TRACT M, CORNER 1 SET AN ALUMINUM POST, 2 1/2 INS. DIAM., 28 INS. LONG, 26 INS. IN THE GROUND, WITH AN ALUMINUM CAP, 3 1/4 INS. DIAM., MARKED AS SHOWN, WITH A MAGNET IN A CLEAR PLASTIC CASE DEPOSITED AT THE BASE OF THE MONUMENT AND A CARSONITE WITNESS POST TO THE NORTH.	AL	ASLS 2022-06 C3 TRM LS 12318 2023	TRACT M, CORNER 3 SET AN ALUMINUM POST, 2 1/2 INS. DIAM., 28 INS. LONG, 26 INS. IN THE GROUND, WITH AN ALUMINUM CAP, 3 1/4 INS. DIAM., MARKED AS SHOWN, WITH A MAGNET IN A CLEAR PLASTIC CASE DEPOSITED AT THE BASE OF THE MONUMENT AND A CARSONITE WITNESS POST TO THE NORTH.
		BT 1 17" BIRCH S. 12° E. 26.3 FT. BT 2 14" BIRCH S. 54° W. 46.3 FT. BT 3 10" BIRCH N. 46° W. 31.1 FT.			BT 1 10" COTTONWOOD S. 72° E. 31.3 FT. BT 2 10" BIRCH S. 20° W. 50.8 FT. BT 3 12" BIRCH N. 7° W. 27.9 FT.

TRACT J, NAD 83 GEODETIC COORDINATES	
C1	63° 48' 59.2" N. 156° 40' 11.5" W.
C2	63° 49' 04.1" N. 156° 40' 23.9" W.
C3	63° 49' 07.8" N. 156° 40' 15.0" W.
C4	63° 49' 01.9" N. 156° 40' 03.0" W.

TRACT K, NAD 83 GEODETIC COORDINATES	
C1	63° 48' 54.0" N. 156° 40' 16.8" W.
C2	63° 48' 59.6" N. 156° 40' 31.3" W.
C3	63° 49' 04.1" N. 156° 40' 23.9" W.
C4	63° 48' 59.2" N. 156° 40' 11.5" W.
C5	63° 48' 56.7" N. 156° 40' 15.0" W.

TRACT L, NAD 83 GEODETIC COORDINATES	
C1	63° 48' 50.1" N. 156° 40' 24.6" W.
C2	63° 48' 55.7" N. 156° 40' 38.9" W.
C3	63° 48' 59.6" N. 156° 40' 31.3" W.
C4	63° 48' 54.0" N. 156° 40' 16.8" W.
C5	63° 48' 51.8" N. 156° 40' 19.9" W.

NOTE: NAD 83 GEODETIC COORDINATES SHOWN IN THESE TABLES ARE ROUNDED TO THE NEAREST TENTH OF A SECOND AND ARE LISTED TO AID LESSEES AND PROPERTY OWNERS IN FINDING THEIR BOUNDARY CORNER MONUMENTS. THESE COORDINATES ARE NOT INTENDED TO BE USED FOR BOUNDARY SURVEY.

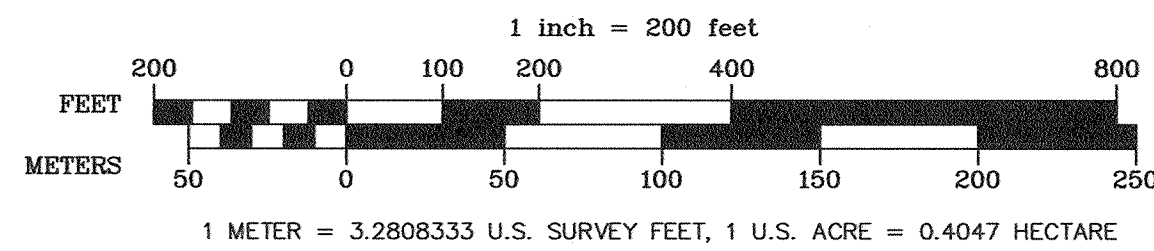


NOTE:
THERE ARE NO LESSEES FOR TRACT J, TRACT K, AND TRACT L.

LEGEND:

- ⊕ PRIMARY MONUMENT RECOVERED
- ⊗ PRIMARY MONUMENT SET THIS SURVEY
- SECONDARY MONUMENT SET THIS SURVEY (AS NOTED ON SHEET 1)
- PROTRACTED SECTION LINES
- SURVEYED LINES
- - - SURVEY TIE
- - - - - ADDITIONAL MEANDERS
- AK MONUMENT IDENTIFIER
- OHW ORDINARY HIGH WATER

SCALE



DATES OF SURVEY BEGINNING: JUNE 24, 2023 ENDING: JULY 2, 2023	LINDSEY SUE VAUGHAN, PLS GLOBAL POSITIONING SERVICES, INC. 2603 BLUEBERRY ROAD ANCHORAGE, ALASKA 99503 PHONE No. (907) 569-2000 CERT. OF AUTHORIZATION NO. AECC1346
--	--

STATE OF ALASKA
DEPARTMENT OF NATURAL RESOURCES
DIVISION OF MINING, LAND & WATER
ANCHORAGE, ALASKA

ALASKA STATE LAND SURVEY NO. 2022-06

INNOKO RIVER II REMOTE RECREATIONAL CABIN SITES
CREATING TRACTS A THROUGH O
WITHIN UNSURVEYED SECTIONS 4, 7, & 18,
TOWNSHIP 19 SOUTH, RANGE 12 EAST,
AND UNSURVEYED SECTIONS 26, 27, & 34,
TOWNSHIP 19 SOUTH, RANGE 11 EAST,
KATEEL RIVER MERIDIAN, ALASKA
MT. MCKINLEY RECORDING DISTRICT

DRAWN BY: LLL DATE: 10/24/2023 SCALE: 1" = 200'	APPROVAL RECOMMENDED Kevin Bow STATEWIDE PLATTING SUPERVISOR DATE: 7/9/24 CHECKED: LSV DNR FILE NO. ASLS 20220006
---	---

Mt. McKinley Recording District PL 2024-1

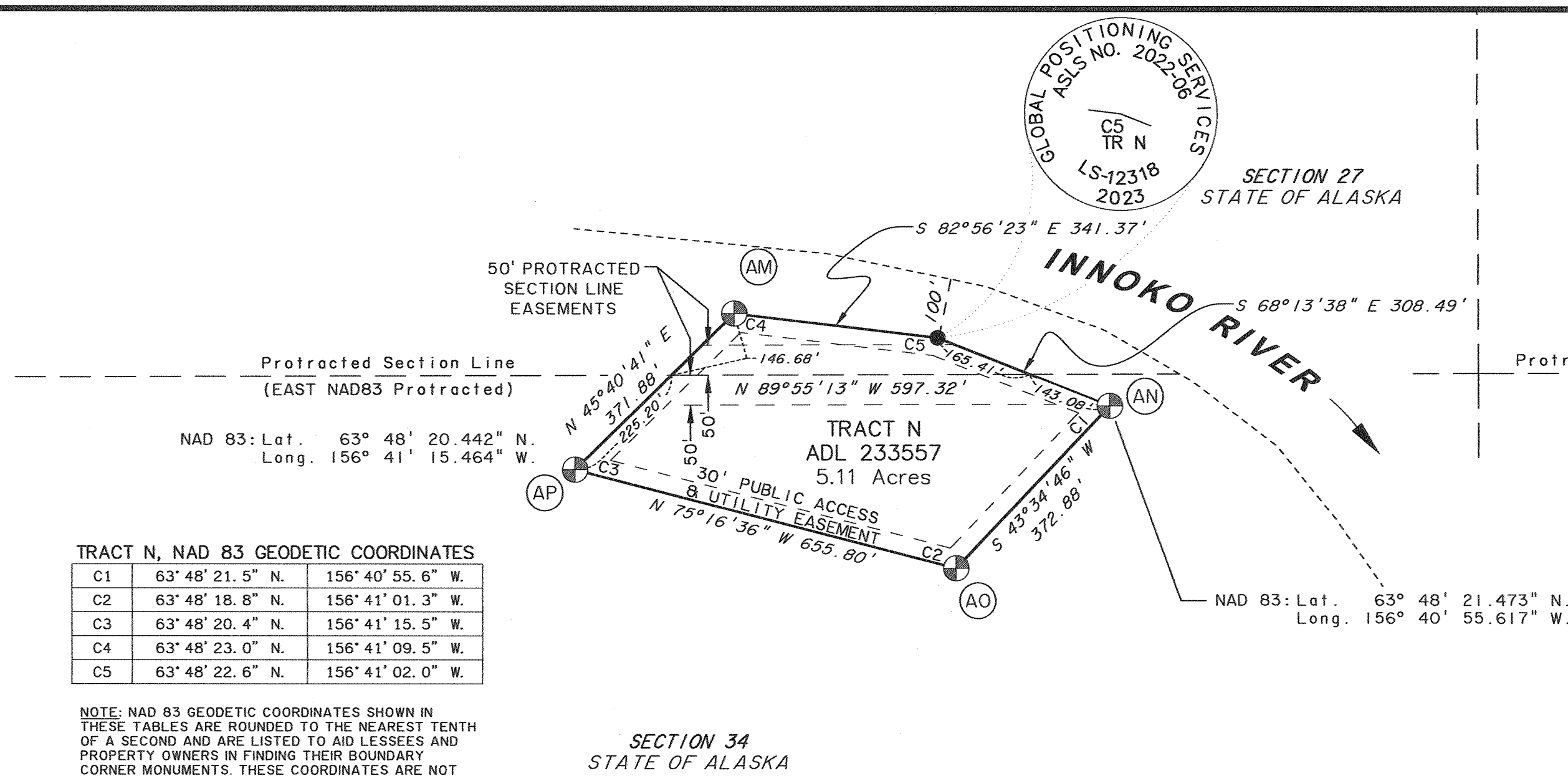
TRACT N PRIMARY MONUMENT INFORMATION

(AM)	ASLS 2022-06 C4 TRN LS 12318 2023	TRACT N, CORNER 4 SET AN ALUMINUM POST, 2 1/2 INS. DIAM., 28 INS. LONG, 26 INS. IN THE GROUND, WITH AN ALUMINUM CAP, 3 1/4 INS. DIAM., MARKED AS SHOWN, WITH A MAGNET IN A CLEAR PLASTIC CASE DEPOSITED AT THE BASE OF THE MONUMENT AND A CARSONITE WITNESS POST TO THE NORTH.
		BT 1 9" BIRCH N. 84° E. 13.8 FT.
		BT 2 10" BIRCH S. 70° W. 23.7 FT.
		BT 3 14" BIRCH N. 54° W. 44.5 FT.
(AN)	ASLS 2022-06 C1 TRN LS 12318 2023	TRACT N, CORNER 1 SET AN ALUMINUM POST, 2 1/2 INS. DIAM., 28 INS. LONG, 26 INS. IN THE GROUND, WITH AN ALUMINUM CAP, 3 1/4 INS. DIAM., MARKED AS SHOWN, WITH A MAGNET IN A CLEAR PLASTIC CASE DEPOSITED AT THE BASE OF THE MONUMENT AND A CARSONITE WITNESS POST TO THE NORTH.
		BT 1 12" BIRCH S. 40° E. 40.9 FT.
		BT 2 11" BIRCH S. 55° W. 63.1 FT.
		BT 3 15" SPRUCE N. 32° W. 3.8 FT.
(AO)	ASLS 2022-06 C2 TRN LS 12318 2023	TRACT N, CORNER 2 SET AN ALUMINUM POST, 2 1/2 INS. DIAM., 28 INS. LONG, 26 INS. IN THE GROUND, WITH AN ALUMINUM CAP, 3 1/4 INS. DIAM., MARKED AS SHOWN, WITH A MAGNET IN A CLEAR PLASTIC CASE DEPOSITED AT THE BASE OF THE MONUMENT AND A CARSONITE WITNESS POST TO THE NORTH.
		BT 1 12" BIRCH N. 17° E. 18.4 FT.
		BT 2 4" BIRCH S. 34° E. 20.4 FT.
		BT 3 10" SPRUCE S. 36° W. 14.2 FT.
(AP)	ASLS 2022-06 C3 TRN LS 12318 2023	TRACT N, CORNER 3 SET AN ALUMINUM POST, 2 1/2 INS. DIAM., 28 INS. LONG, 26 INS. IN THE GROUND, WITH AN ALUMINUM CAP, 3 1/4 INS. DIAM., MARKED AS SHOWN, WITH A MAGNET IN A CLEAR PLASTIC CASE DEPOSITED AT THE BASE OF THE MONUMENT AND A CARSONITE WITNESS POST TO THE NORTH.
		BT 1 9" SPRUCE N. 63° E. 25.9 FT.
		BT 2 8" SPRUCE S. 21° E. 16.9 FT.
		BT 3 6" SPRUCE N. 5° W. 13.2 FT.

TRACT N, NAD 83 GEODETIC COORDINATES

C1	63° 48' 21.5" N.	156° 40' 55.6" W.
C2	63° 48' 18.8" N.	156° 41' 01.3" W.
C3	63° 48' 20.4" N.	156° 41' 15.5" W.
C4	63° 48' 23.0" N.	156° 41' 09.5" W.
C5	63° 48' 22.6" N.	156° 41' 02.0" W.

NOTE: NAD 83 GEODETIC COORDINATES SHOWN IN THESE TABLES ARE ROUNDED TO THE NEAREST TENTH OF A SECOND AND ARE LISTED TO AID LESSEES AND PROPERTY OWNERS IN FINDING THEIR BOUNDARY CORNER MONUMENTS. THESE COORDINATES ARE NOT INTENDED TO BE USED FOR BOUNDARY SURVEY.



LESSEE CERTIFICATE

I, THE UNDERSIGNED, HEREBY CERTIFY THAT I AM THE LESSEE AS SHOWN HEREON. I HEREBY APPROVE THIS SURVEY AND PLAT.

TRACT N, AND ADL NO. 233557

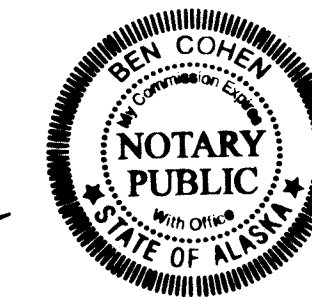
STEVEN W. SHOUN
7362 W. PARKS HWY #510
WASILLA, AK 99623

NOTARY'S ACKNOWLEDGEMENT

SUBSCRIBED AND SWORN TO BEFORE ME THIS 8th DAY OF June, 2024.

FOR: Steven W. Shoun
LESSEE

NOTARY PUBLIC FOR ALASKA
MY COMMISSION EXPIRES With Office



LESSEE CERTIFICATE

I, THE UNDERSIGNED, HEREBY CERTIFY THAT I AM THE LESSEE AS SHOWN HEREON. I HEREBY APPROVE THIS SURVEY AND PLAT.

TRACT O, AND ADL NO. 233556

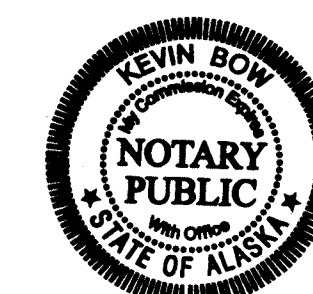
PEGGY G. WHITE
P.O. BOX 231
WILLOW, AK 99688

NOTARY'S ACKNOWLEDGEMENT

SUBSCRIBED AND SWORN TO BEFORE ME THIS 22 DAY OF May, 2024.

FOR: Peggy White
LESSEE

NOTARY PUBLIC FOR ALASKA
MY COMMISSION EXPIRES With Office



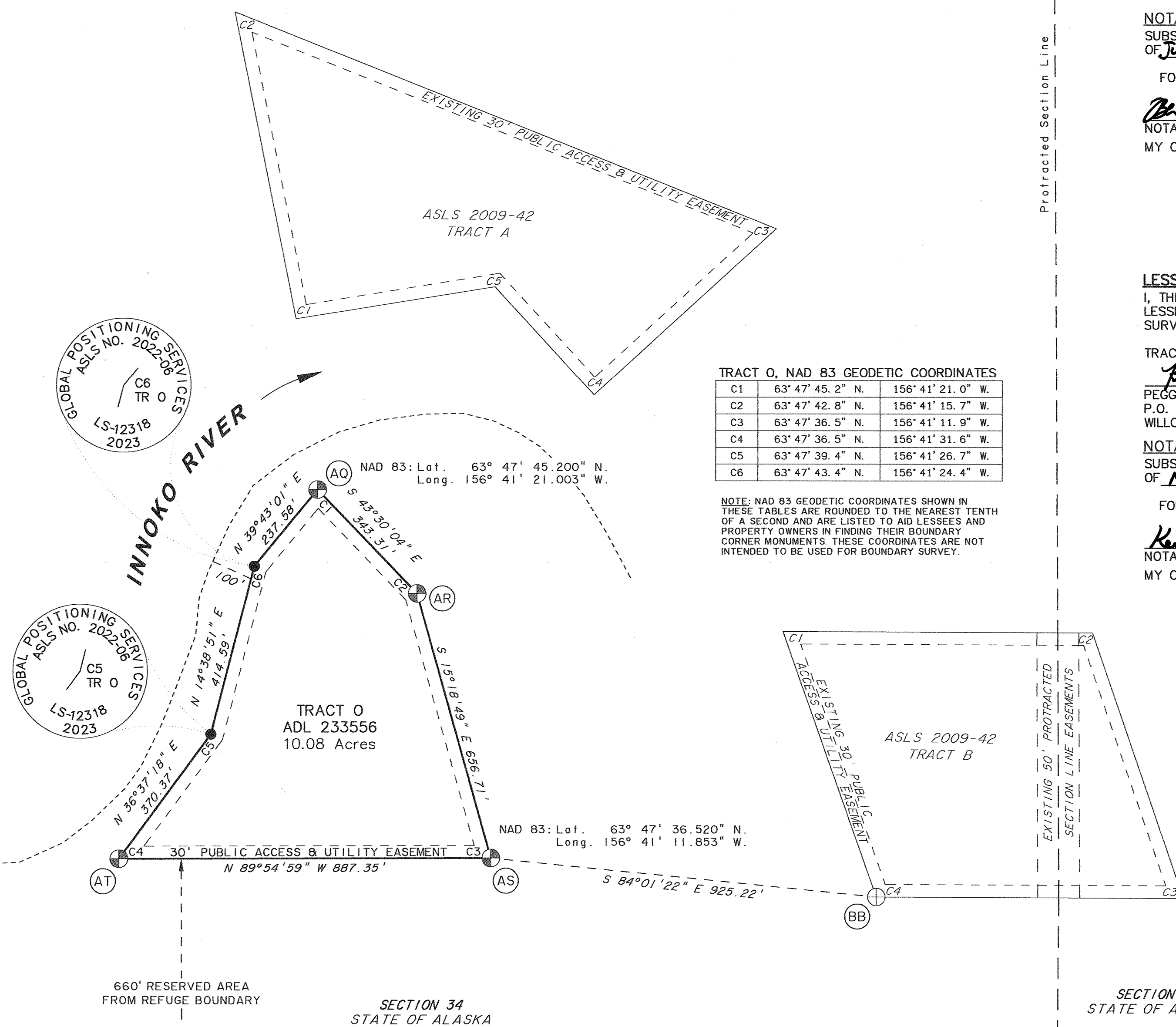
TRACT O PRIMARY MONUMENT INFORMATION

(AO)	ASLS 2022-06 C1 TRO LS 12318 2023	TRACT O, CORNER 1 SET AN ALUMINUM POST, 2 1/2 INS. DIAM., 28 INS. LONG, 26 INS. IN THE GROUND, WITH AN ALUMINUM CAP, 3 1/4 INS. DIAM., MARKED AS SHOWN, WITH A MAGNET IN A CLEAR PLASTIC CASE DEPOSITED AT THE BASE OF THE MONUMENT AND A CARSONITE WITNESS POST TO THE NORTH.
		BT 1 6" WILLOW N. 52° E. 25.9 FT.
		BT 2 8" COTTONWOOD S. 9° W. 32.1 FT.
		BT 3 20" COTTONWOOD S. 51° W. 38.3 FT.
(AR)	ASLS 2022-06 C2 TRO LS 12318 2023	TRACT O, CORNER 2 SET AN ALUMINUM POST, 2 1/2 INS. DIAM., 28 INS. LONG, 26 INS. IN THE GROUND, WITH AN ALUMINUM CAP, 3 1/4 INS. DIAM., MARKED AS SHOWN, WITH A MAGNET IN A CLEAR PLASTIC CASE DEPOSITED AT THE BASE OF THE MONUMENT AND A CARSONITE WITNESS POST TO THE NORTH.
		BT 1 13" BIRCH N. 30° E. 44.4 FT.
		BT 2 13" BIRCH S. 80° E. 53.5 FT.
		BT 3 6" BIRCH S. 43° W. 23.6 FT.
(AS)	ASLS 2022-06 C3 TRO LS 12318 2023	TRACT O, CORNER 3 SET AN ALUMINUM POST, 2 1/2 INS. DIAM., 28 INS. LONG, 26 INS. IN THE GROUND, WITH AN ALUMINUM CAP, 3 1/4 INS. DIAM., MARKED AS SHOWN, WITH A MAGNET IN A CLEAR PLASTIC CASE DEPOSITED AT THE BASE OF THE MONUMENT AND A CARSONITE WITNESS POST TO THE NORTH.
		BT 1 11" BIRCH N. 33° E. 26.0 FT.
		BT 2 14" BIRCH S. 87° E. 53.8 FT.
		BT 3 13" BIRCH S. 73° W. 39.6 FT.
(AT)	ASLS 2022-06 C4 TRO LS 12318 2023	TRACT O, CORNER 4 SET AN ALUMINUM POST, 2 1/2 INS. DIAM., 28 INS. LONG, 26 INS. IN THE GROUND, WITH AN ALUMINUM CAP, 3 1/4 INS. DIAM., MARKED AS SHOWN, WITH A MAGNET IN A CLEAR PLASTIC CASE DEPOSITED AT THE BASE OF THE MONUMENT AND A CARSONITE WITNESS POST TO THE NORTH.
		BT 1 8" BIRCH S. 33° E. 24.7 FT.
		BT 2 5" BIRCH N. 50° W. 25.0 FT.
		BT 3 5" BIRCH N. 5° W. 14.3 FT.

TRACT O, NAD 83 GEODETIC COORDINATES

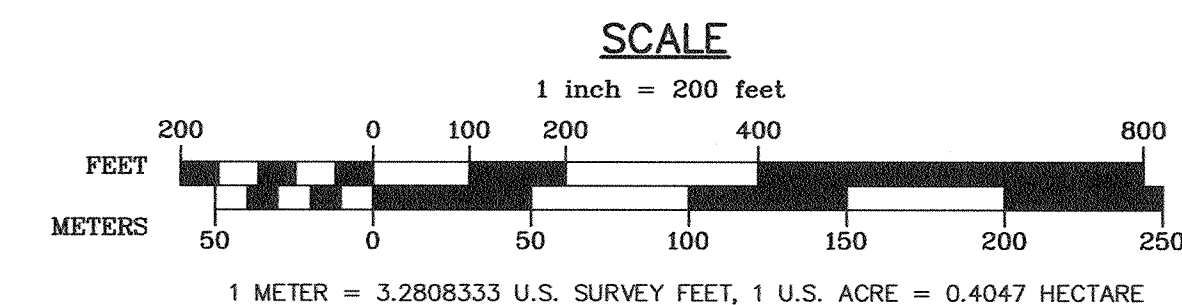
C1	63° 47' 45.2" N.	156° 41' 21.0" W.
C2	63° 47' 42.8" N.	156° 41' 15.7" W.
C3	63° 47' 36.5" N.	156° 41' 11.9" W.
C4	63° 47' 36.5" N.	156° 41' 31.6" W.
C5	63° 47' 39.4" N.	156° 41' 26.7" W.
C6	63° 47' 43.4" N.	156° 41' 24.4" W.

NOTE: NAD 83 GEODETIC COORDINATES SHOWN IN THESE TABLES ARE ROUNDED TO THE NEAREST TENTH OF A SECOND AND ARE LISTED TO AID LESSEES AND PROPERTY OWNERS IN FINDING THEIR BOUNDARY CORNER MONUMENTS. THESE COORDINATES ARE NOT INTENDED TO BE USED FOR BOUNDARY SURVEY.



RECOVERED MONUMENT INFORMATION

(BB)	STATE OF ALASKA ASLS 2009-42 TR B LS 2087 2011 DEPT. OF NATURAL RESOURCES	TRACT B, CORNER 4, ASLS 2009-42 FOUND AN ALUMINUM POST, 2 1/2 INS. DIAM., WITH AN ALUMINUM CAP, MARKED AS SHOWN, FIRMLY SET, LEANING SOUTHERLY, PROJECTING 9 INS. OUT OF THE GROUND AND A BROKEN CARSONITE WITNESS POST TO THE NORTH. STRAIGHTENED MONUMENT TO PROJECT 3 INS. OUT OF THE GROUND.
		BT 1 11" BIRCH N. 30 1/2° E. 16.9 FT. WITH BEARING TREE TAG
		BT 2 6" BIRCH S. 20° E. 12.8 FT. WITH BEARING TREE TAG
		BT 3 10" SPRUCE N. 23° W. 19.1 FT. WITH BEARING TREE TAG



DATES OF SURVEY BEGINNING: JUNE 24, 2023 ENDING: JULY 2, 2023	LINDSEY SUE VAUGHAN, PLS GLOBAL POSITIONING SERVICES, INC. 2603 BLUEBERRY ROAD ANCHORAGE, ALASKA 99503 PHONE No. (907) 569-2000 CERT. OF AUTHORIZATION NO. AECC1346
---	--

STATE OF ALASKA
DEPARTMENT OF NATURAL RESOURCES
DIVISION OF MINING, LAND & WATER
ANCHORAGE, ALASKA

ALASKA STATE LAND SURVEY NO. 2022-06

INNOKO RIVER II REMOTE RECREATIONAL CABIN SITES
CREATING TRACTS A THROUGH O
WITHIN UNSURVEYED SECTIONS 4, 7, & 18,
TOWNSHIP 19 SOUTH, RANGE 12 EAST,
AND UNSURVEYED SECTIONS 26, 27, & 34,
TOWNSHIP 19 SOUTH, RANGE 11 EAST,
KATEEL RIVER MERIDIAN, ALASKA

MT. MCKINLEY RECORDING DISTRICT

DRAWN BY: LLL	APPROVAL RECOMMENDED	7/9/24
DATE: 10/24/2023	STATEWIDE PLATING SUPERVISOR	DATE
SCALE: 1" = 200'	CHECKED: LSV	DNR FILE NO. ASLS 20220006



2024-1
Plat #
Mt. McKinley
Rec Dist
7/19 2024
Date
Time 10:43 AM

INNOKO NATIONAL WILDLIFE REFUGE