

NOTES:

- This survey was accomplished in accordance with AS 38.04.045, GSC 746 and SSI 2007-15
- All bearings shown are true bearings as oriented to the Basis of Bearing and distances shown are reduced to horizontal distance.
- The accuracy of this survey is greater than 1:5000.
- All parcels of land owned by the State of Alaska, located within 50.00 feet of, or bisected by a surveyed or protracted section line, are subject to a 50 foot (50') easement, on each side of the section line, which is reserved to the State of Alaska for public highways under AS 19.10.010.
- Monuments were set with high precision differentially corrected Real Time Kinematic GPS methods using Topcon Data Systems GPS Survey Pro version 3.7 and confirmed with high precision differentially corrected static observations using Javad Legacy and Legacy-E receivers, with data processed with Topcon Tools Vers. 6.04 software.
- All new driveways or road approaches onto DOT&P facilities will require an approved Driveway Permit or an approved Right-Of-Way Approach Permit prior to construction.

7. Public Utility Easements:

- No structures, fences, obstructions, or blockages may be built or placed within the Public Utility Easements.
- The Utility Companies shall have the right to identify and remove any dead, weak, overhanging, or otherwise dangerous trees adjacent to or in the vicinity of the easement.
- There will be a 25' radius easement at each pole location for guys, anchors, and other supportive structures.

CURVE	LENGTH	RADIUS	DELTA	CHORD	BG	CHORD
C1	62.85	40.00	90°01'41"	N44°57'34"W		56.58
C2	62.82	40.00	89°58'30"	N45°02'41"E		56.56
C3	62.85	40.00	90°01'00"	N44°57'34"W		56.58
C4	62.79	40.00	89°56'19"	N45°01'26"E		56.54
C5	62.89	40.00	90°04'49"	N44°58'00"W		56.61
C6	62.84	40.00	90°00'21"	N45°04'39"E		56.57
C7	62.81	40.00	89°59'28"	N44°55'01"W		56.55
C8	62.82	40.00	90°04'49"	N44°58'00"W		56.56
C9	62.84	40.00	90°00'52"	N44°57'28"W		56.58
C10	62.82	40.00	89°59'06"	N45°02'31"E		56.56
C11	62.86	40.00	90°02'34"	N44°56'53"W		56.59
C12	62.79	40.00	89°56'38"	N45°02'43"E		56.54
C13	62.86	40.00	90°05'18"	N44°56'45"W		56.59
C14	62.81	40.00	89°57'42"	N45°03'19"E		56.55
C15	62.86	40.00	90°05'18"	N44°56'45"W		56.59
C16	62.81	40.00	89°57'42"	N45°03'19"E		56.55

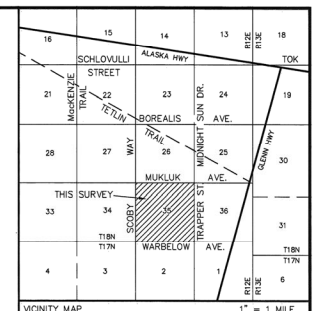
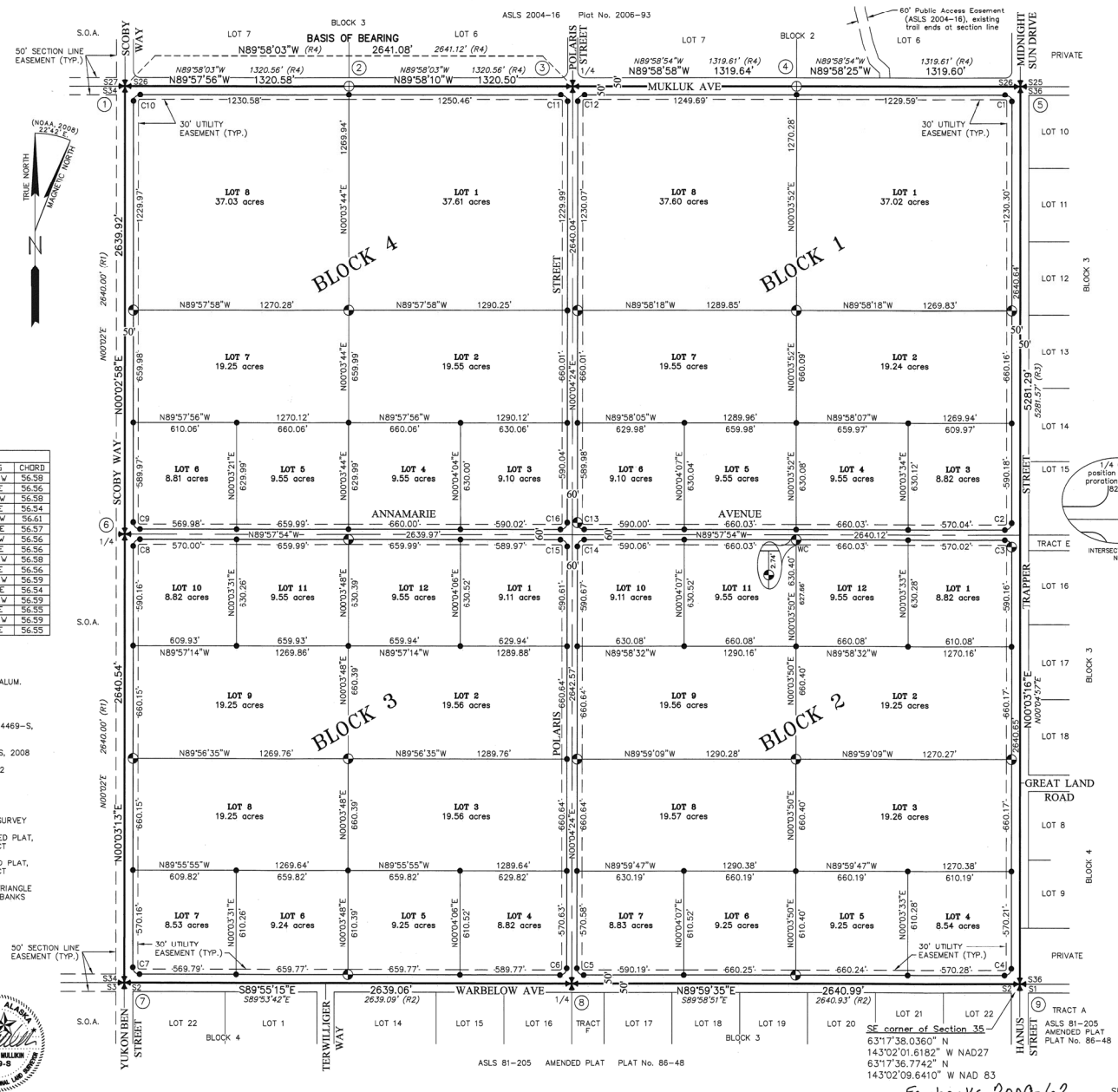
LEGEND

- ⊕ FOUND 3 1/4" ALASKA DIVISION OF LANDS ALUM. CAPPED MONUMENT, 4469-S, 2005
- ⊗ FOUND 3 1/4" BLM BRASS CAP
- ⊙ SET 3 1/4" ALUM. CAP ON 2" ALUM. PIPE, 4469-S, 2008
- SET 2" ALUM. CAP ON 5/8" REBAR, 4469-S, 2008
- KEY TO MONUMENT DESCRIPTION ON SHEET 2
- SURVEYED LINE
- - - UNSURVEYED
- (R1) RECORD DATA PER B.L.M., 1955 TOWNSHIP SURVEY
- (R2) RECORD DATA PER A.S.L.S. 81-205, AMENDED PLAT, PLAT 86-48, FAIRBANKS RECORDING DISTRICT
- (R3) RECORD DATA PER A.S.L.S. 82-10, AMENDED PLAT, PLAT 83-27, FAIRBANKS RECORDING DISTRICT
- (R4) RECORD DATA PER A.S.L.S. 2004-16, TOK TRIANGLE SUBDIVISION, PHASE I, PLAT 2006-83, FAIRBANKS RECORDING DISTRICT

SURVEYOR'S CERTIFICATE

I certify that I am properly registered and licensed to practice land surveying in the State of Alaska, that this plat represents a survey made by me or under my direct supervision, that the monuments shown hereon exist as described, and that all dimensions and other details are correct.

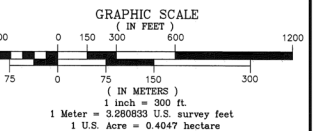
Date: 5/30/09
 Registration No.: 4469-S
 Donald E. Mullikin
 Professional Land Surveyor



CERTIFICATE OF OWNERSHIP AND DEDICATION
 I, the undersigned, hereby certify that I am the Director, Division of Mining, Land and Water and that the State of Alaska is the owner of ASLS 2007-15, as shown hereon. I hereby approve this survey and plat for the State of Alaska, and dedicate for public or private use as noted, all easements, public utility areas, and rights-of-way as shown and described hereon.
 June 12, 2009 *Donald E. Mullikin*
 Director, Division of Mining, Land & Water
NOTARY ACKNOWLEDGEMENT
 Subscribed and sworn to before me this 12th day of June, 2009.
 For: *Donald E. Mullikin*
 Notary Public for the State of Alaska.
 My Commission Expires: *10/24/10*

PLAT APPROVAL
 This plat is approved by the Commissioner of the Department of Natural Resources, or the Commissioner's designee, in accordance with AS 40.15.
Donald E. Mullikin June 12, 2009
 Commissioner

TAX CERTIFICATE
 This plat is not subject to taxation, at the time of filing.
 Coordinates: The coordinates shown were constrained to the National Spatial Reference System (NSRS) using CORS Stations FAIR, GNA, and CERH, and extended to the corner location by static survey methods, and converted to NAD 27 using the CORPSCON utility.



DATE OF SURVEY: BEGINNING May 3, 2008 ENDING May 12, 2008	NAME OF SURVEYOR: Mullikin, Donald E. P.O. Box 790 Homer, AK 99603-0790
STATE OF ALASKA DEPARTMENT OF NATURAL RESOURCES, DIVISION OF MINING, LAND, AND WATER	
ALASKA STATE LAND SURVEY No. 2007-15 TOK TRIANGLE SUBDIVISION, Phase II	
Creating Lots 1-8, Block 1; Lots 1-12, Block 2; Lots 1-12, Block 3; Lots 1-8, Block 4	
Within Surveyed Section 35, ASLS 81-205, Copper River Meridian, Alaska, Fairbanks Recording District Containing 640.23 Acres	
DRAWN BY: MPF DATE: 11-13-08	APPROVAL RECOMMENDED: <i>Red Gault</i> 6-11-09 STATE ENGINEERING SUPERVISOR, DATE
SCALE: CHECKED FIELD BK. 1" = 300'	FILE NO: DEM, JVM 294,295,298/ASLS 20070015

Fairbanks 2009-62

ASLS 2007-15 MONUMENTATION

MONUMENTATION - FOUND

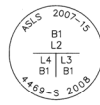
Cor. #	Corner Marking	Description	Bearing Trees
1	US CAD SURV T18N R12E S27/S26 S34/S35 1955 BLM	Found 3 1/4" brass cap, standard BLM mon., 0.2' above ground.	Found: 5° Poplar, N79°E, 6.91' (R4 = 6° Aspen, N81°E, 6.89') 5° Poplar, S33°E, 21.78' (R4 = 6° Aspen, S31°E, 21.78') 4° Poplar, S23°30'W, 26.66' (R4 = 5° Aspen, S18°30'W, 26.66') 5° Poplar, N43°W, 19.04' (R4 = 7° Aspen, N39°W, 19.02') Set: Fiberglass Post, E., 0.5'
2	STATE OF ALASKA 4469-S ASLS 2004-16 W 1/4 S 26 S 35 2005 DNR	Found 3 1/4" alum. cap, on 2" I.D. alum. pipe, 0.4' above ground.	Found: Iron fence post, N., 1.0' 4° Spruce, N44°E, 32.68' (R4 = 4° Spruce, N44°30'E, 32.65') 12' Spruce, S4°E, 54.65' (R4 = 12' Spruce, S4°E, 54.60') 5° Spruce, N49°W, 42.70' (R4 = 7° Spruce, N51°W, 42.67')
3	US CAD SURV 1/4 S26 4 S35 1955 BLM	Found 3 1/4" brass cap, standard BLM mon., 0.2' above ground, in good condition.	Found: 6° Aspen, N8°E, 20.90' (R4 = 6° Aspen, N9°30'E, 21.19') 5° Aspen, S5°E, 19.78' (R4 = 5° Aspen, S7°E, 19.78') 9° Spruce, S75°30'W, 51.39' (R4 = Spruce, S70°30'W, 51.35')
4	STATE OF ALASKA 4469-S ASLS 2004-16 E 1/4 S-26 S-35 2005 DNR	Found 3 1/4" alum. cap, on 2" I.D. alum. pipe, 0.35' above ground.	Found: Iron fence post, N., 1.0' 5° Aspen, N28°E, 29.81' (R4 = 5° Aspen, N27°30'E, 29.79') 6° Spruce, S29°30'W, 35.23' (R4 = 7° Spruce, S34°30'W, 35.21') 5° Aspen, N49°30'W, 43.25' (R4 = 5° Aspen, N51°W, 43.25')
5	US CAD SURV T18N R12 S26/S25 S35/S36 1955 BLM	Found 3 1/4" brass cap, standard BLM mon., flush with surface of gravel road.	Found: 5° Aspen, N45°E, 40.00' (R4) 5° Aspen, S40°E, 45.32' (R4) 4° Spruce, S36°W, 45.71' (R4)
6	US CAD SURV 1/4 S34/S35 1955 BLM	Found 3 1/4" brass cap, standard BLM mon., 0.2' above ground, in good condition.	No original bearing trees found Set: Fiberglass Post, N., 0.7' 5° Poplar, S39°E, 48.23' 5° Spruce, S58°W, 37.31' 4° Spruce, N57°30'W, 38.93'
7	US CAD SURV T18N R12E S34/S35 S31/S2 1955 BLM	Found 3 1/4" brass cap, standard BLM mon., 0.1' above ground, in good condition.	No original bearing trees found Found: 7° Poplar, S3°30'W, 51.54' (source unknown) 8° Poplar, N44°30'W, 69.69' (source unknown) Set: Fiberglass Post, W., 0.7' 6° Spruce, N44°E, 92.00'
8	US CAD SURV 1/4 S35 S2 1955 BLM	Found 3 1/4" brass cap, standard BLM mon., 0.1' above ground, in good condition.	No original bearing trees found Found: 5° Poplar, S69°30'W, 22.98' (source unknown) Set: Fiberglass Post, E., 1.0' 5° Poplar, N25°E, 72.83' 5° Spruce, N26°30'W, 72.84'
9	US CAD SURV T18N R12E S35/S36 S2/S1 T17N 1955 BLM	Found 3 1/4" brass cap, standard BLM mon., 0.1' above ground, in good condition.	No original bearing trees found Set: Fiberglass Post, S., 0.7' 4° Spruce, N54°E, 72.02' 5° Spruce, S43°W, 76.25' 4° Spruce, N48°W, 86.05'

TYPICAL PRIMARY MONUMENT
SET THIS SURVEY



3-1/4" aluminum cap on
2" I.D. x 30" aluminum pipe,
0.3" above ground.

TYPICAL SECONDARY MONUMENT
SET THIS SURVEY



2" aluminum cap on 5/8" x 36"
rebar, 0.4" above ground.

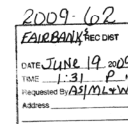
Unless otherwise noted monuments are set with the cap 4" above the ground. Primary monuments also have a "DEEP 1" magnet at the base of the monument. All monuments set for this survey have fiberglass or iron fence posts set alongside as witness posts.

RECORD DATA SOURCE

- (R1) RECORD DATA PER B.L.M., 1955 TOWNSHIP SURVEY
- (R2) RECORD DATA PER A.S.L.S. 81-205, AMENDED PLAT, PLAT 86-48, FAIRBANKS RECORDING DISTRICT
- (R3) RECORD DATA PER A.S.L.S. 82-10, AMENDED PLAT, PLAT 83-27, FAIRBANKS RECORDING DISTRICT
- (R4) RECORD DATA PER A.S.L.S. 2004-16, TOK TRIANGLE SUBDIVISION, PHASE 1, PLAT 2006-93, FAIRBANKS RECORDING DISTRICT

Bearing tree directions are from the monument to the object. Trees set this survey are marked with an "X" on a blaze at breast height and a "B1" on a blaze at the root crown. An aluminum tag is affixed at breast height.

DATE OF SURVEY: BEGINNING May 3, 2008 ENDING May 12, 2008	NAME OF SURVEYOR: Mullikin Surveys P.O. Box 796 Homer, AK 99603-0790
STATE OF ALASKA DEPARTMENT OF NATURAL RESOURCES, DIVISION OF MINING, LAND, AND WATER ANCHORAGE, ALASKA	
ALASKA STATE LAND SURVEY No. 2007-15 TOK TRIANGLE SUBDIVISION, Phase II	
Creating Lots 1-8, Block 1; Lots 1-12, Block 2; Lots 1-12, Block 3; Lots 1-8, Block 4	
Within Surveyed Section 35, T.18N., R.12E., Copper River Meridian, Alaska, Fairbanks Recording District Containing 640.23 Acres	
DRAWN BY: MPF DATE: 11-13-08	APPROVAL RECOMMENDED: STATE PLATING SUPERVISOR, DATE <i>Paul G. ... 6-11-09</i>
SCALE: N.A.	CHECKED FIELD BK. FILE NO. DEM. JVM 294,295,298/ASLS 20070015



SHEET 2 OF 2