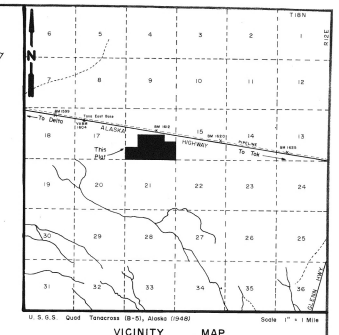
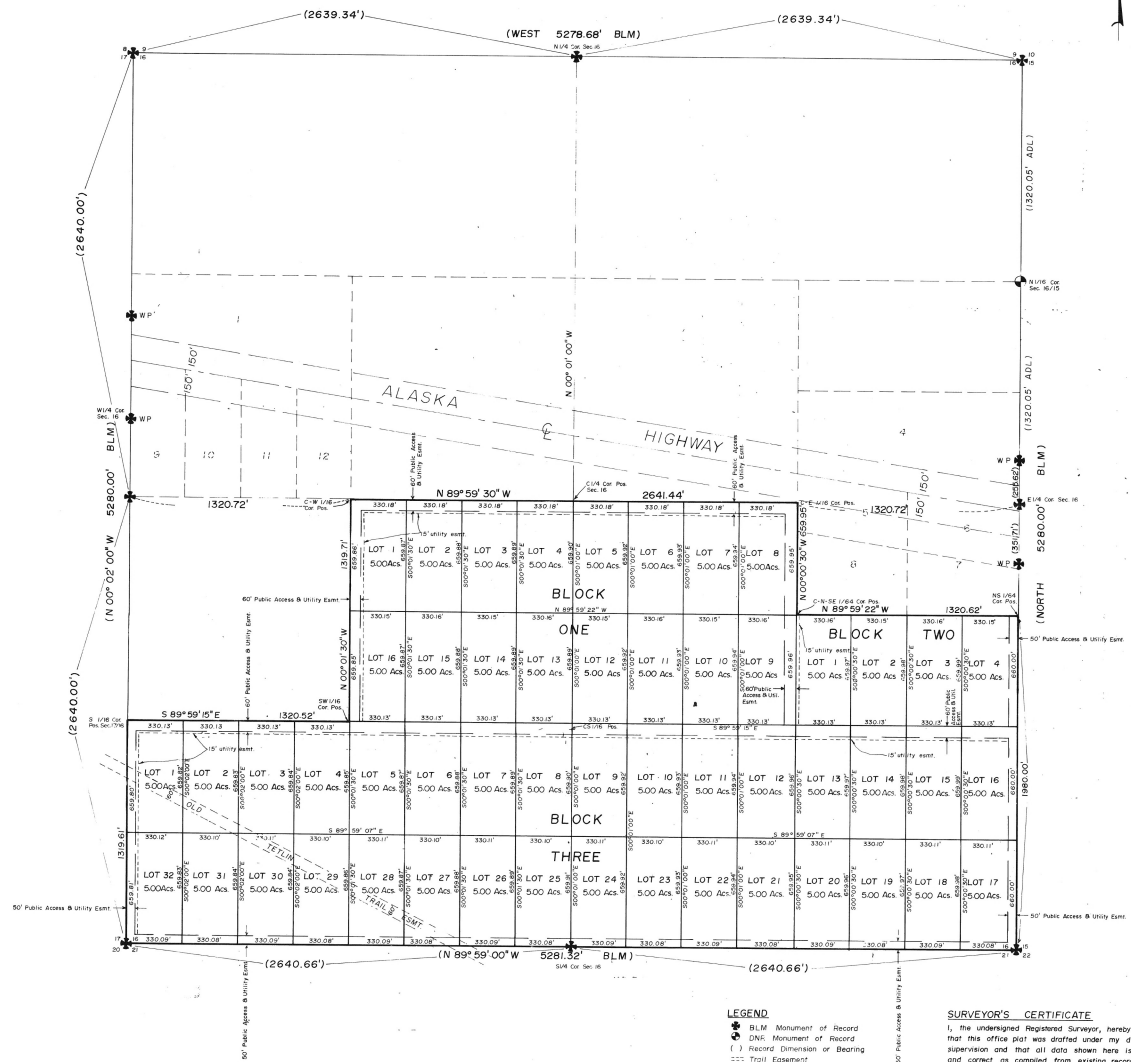


Surveyed Section 16, Township 18 North, Range 12 East, Copper River Meridian, Alaska



OWNERSHIP CERTIFICATE
I, the undersigned, hereby certify that I am the Director, Division of Technical Services, and that the State of Alaska is the owner of Alaska State Land Survey No. 79-134, as shown hereon. I hereby approve this survey and plat for the State of Alaska.
Date 12-26-79
Director, Division of Technical Services

NOTARY'S ACKNOWLEDGEMENT
Subscribed and sworn to before me this 26 day of Dec 1979
Notary for Alaska
My commission expires Dec 1980

DEDICATION OF EASEMENTS, PUBLIC UTILITIES AND RIGHT-OF-WAYS
I hereby dedicate for public or private use, as noted, all easements, public utility areas and right of ways as shown and described hereon.
Date 12-26-79
Director, Division of Technical Services

NOTARY'S ACKNOWLEDGEMENT
Subscribed and sworn to before me this 26 day of Dec 1979
Notary for Alaska
My commission expires Dec 1980

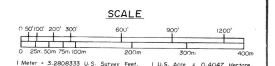
- NOTES.**
1. This paper plat was accomplished in accordance with USC-186.
 2. Bearings are true mean bearings and the distances are true distances.
 3. Lot boundaries on this plat are established by the method of aliquot parts unless otherwise noted.
 4. All dimensions are computed unless otherwise noted.
 5. The location of the Old Tullin Trail Easement as shown hereon was established from BLM field notes.
 6. All lands encompassed by this survey are subject to a 50' access easement along the ordinary high water line of city water frontage.
 7. Record dimensions and bearings for the east section line are taken from the Division of Technical Services Supplemental Cadastral Survey Plat of Section 14, 15, 22 and 23, Township 18 North, Range 12 East, Copper River Meridian, filed in the Fairbanks Recording District on December 15, 1977, under plat file number 77-20.
 8. Record dimensions and bearings for the north, west and south section lines are taken from the official Bureau of Land Management Supplemental Plat of Section 16, Township 18 North, Range 12 East, Copper River Meridian, Alaska, accepted October 28, 1965.
 9. The monuments depicted on this plat represent the information from the Division of Technical Services Supplemental Cadastral Survey Plat within Township 18 North, Range 12 East, Copper River Meridian, Alaska and the Bureau of Land Management official plat within Township 18 North, Range 12 East, Copper River Meridian, Alaska.
 10. The metric data is being shown hereon for information purposes only.
 11. Computations are based on BLM datum of record.
 12. This plat was prepared from available data. No field survey was made nor were any stakes or monuments set.
 13. Abbreviations ADL (Alaska Division of Lands), DTS (Division of Technical Services), and DNR (Department of Natural Resources) are synonymous with each other.

LEGEND
● BLM Monument of Record
○ DNR Monument of Record
() Record Dimension or Bearing
--- Trail Easement
--- Public Access & Utility Easement
--- Public Access & Utility Easement with Additional 15' Utility Easement

SURVEYOR'S CERTIFICATE
I, the undersigned Registered Surveyor, hereby certify that this office plat was drafted under my direct supervision and that all data shown here is true and correct as compiled from existing record information.
Date 12-26-79
Registration No 1300-5

STATION INFORMATION
General Station 108
Datum No. 50-45-35A dated 12/18/64

80-25
RECORDED - FILED NO.
FEB 5 1980
DNR
DATE 12-23-80
BY ASIDE



ALASKA STATE LAND SURVEY NO. 79-134

A Subdivision of a Portion of Surveyed Section 16, T.18N., R.12E., C.R.M., Alaska

TOTAL AREA = 260.06 ACRES
105.25 HECTARES



| | | | |
|---|--|---|--|
| DATE OF PLAT August 13, 1979 | | NAME OF SURVEYOR Don W. Nelson | |
| August 26, 1979 | | August 26, 1979 | |
| STATE OF ALASKA DEPARTMENT OF NATURAL RESOURCES DIVISION OF TECHNICAL SERVICES ANCHORAGE, ALASKA | | | |
| ALASKA STATE LAND SURVEY NO. 79-134 Within: S/25/2, NE/4SW/4, NW/4SE/4, S/2NE/4SE/4 Surveyed Section 16, T.18N., R.12E., C.R.M., Alaska | | | |
| DRAWN BY A.S.T. 108 DATE 8/26/79 | | APPROVAL Don W. Nelson Chief Cadastral Surveyor DATE 8/26/79 | |
| SCALE 1" = 300' | | CHECKED FILE NO. 79-134 | |