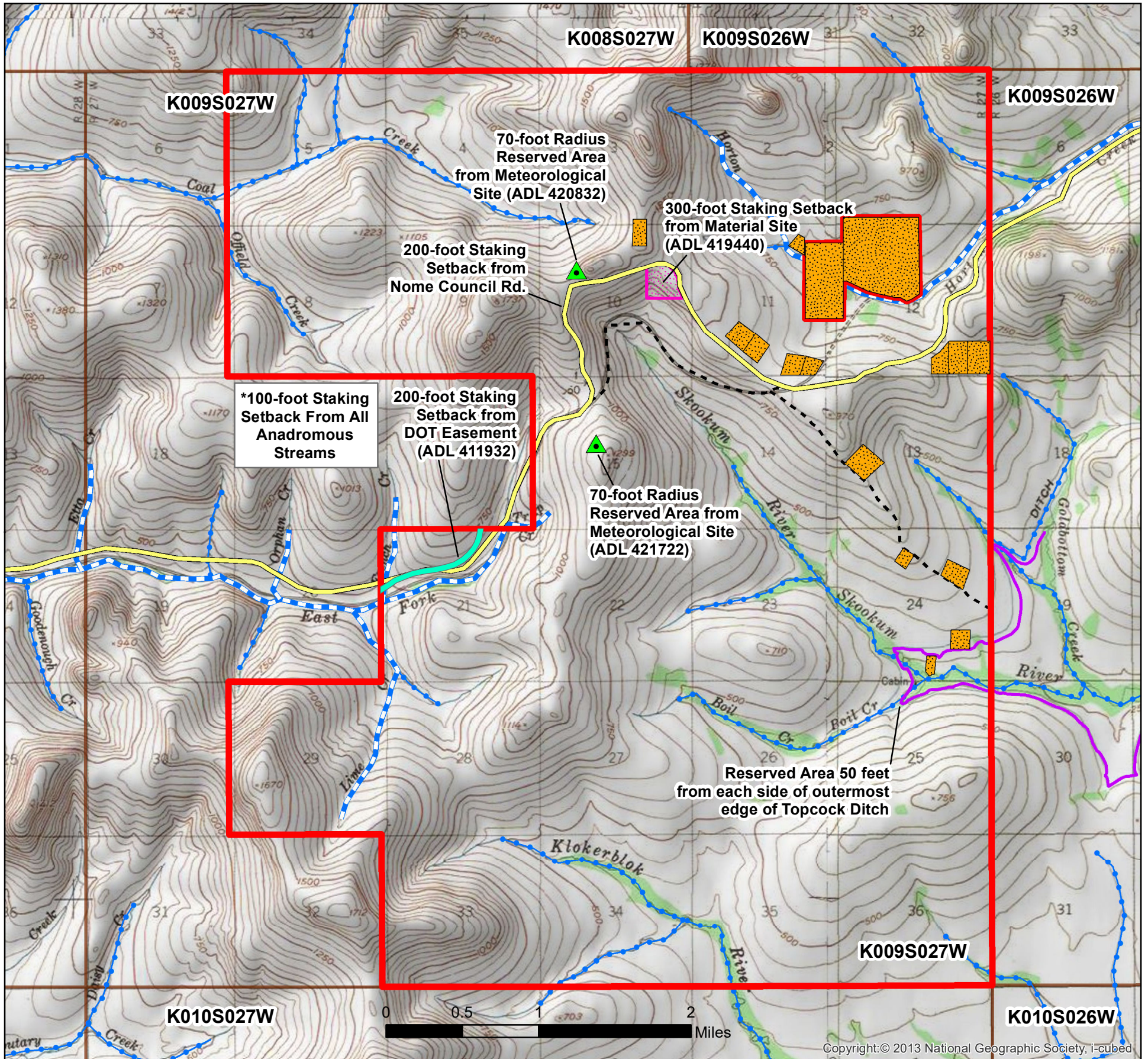




East Fork Pass II Staking Area



Copyright: © 2013 National Geographic Society, i-Cubed

2/10/2024

USGS QUAD 1:63,360 Maximum Parcel size: 20 acres
Solomon C- 4, C- 5 Minimum Parcel size: 5 acres
Township 9 South,
Range 27 West,
Kateel Meridian Staking Authorizations: 45
 Staking Period: 2024

This staking map is for graphic representation only. It is intended to be used as a guide only and may not show the exact location of existing surveyed parcels or show all easements and reservations. Source documents remain the official record and should be reviewed prior to staking.

1. All parcels staked on land owned by the State of Alaska that contain land within 50 feet of a surveyed or protracted (unsurveyed) section line, are subject to a 50-foot wide easement on each side of the section line, which is reserved to the State of Alaska for public highways under AS 19.10.010. Parcels may not be staked over a surveyed section line.
2. Parcels may not be staked across any public or navigable water body. Parcels are subject to a 50-foot wide public access easement upland from the ordinary high water mark of public and navigable water bodies.
3. Parcels are subject to a 50-foot building setback from the ordinary high water mark of all public streams within the staking area.
4. A staking setback is required from unauthorized improvements.
5. A staking setback is required from airstrips used by the public.
6. Most surveys (i.e. ASLS, USS) have survey monuments at each corner, which can be used as reference points and common corners when staking. See the survey plats for information on monument corner numbers, bearings, and distances. Monuments found in the field take precedence over the graphic record.
7. There are public access easements along most ASLS boundaries. Check the survey plats for additional information.
8. Trail easements have not been verified and their actual location may differ on the ground. Labeling of a trail easement does not guarantee the existence of a trail.
9. Unauthorized airstrips are not maintained by the Department of Natural Resources. Use of airstrips on state land that are not authorized is at your own risk.
10. See the general staking instructions and area-specific supplemental staking instructions for additional information.

