

Attachment A

BASIS OF COORDINATES

The shown measured NAD 83 (2011) Epoch 2010.0000 coordinates are based on an OPUS Solution at Monument 2018. The coordinates were constrained to the National Spatial Reference System using CORS reference stations: JWS1 (DP4367), AB49 (DP4745), and ATU (DP5991). The NAD 83 ellipsoids were converted to NAD 27 using Trimble Business Center, Version 3.70.

BASIS OF BEARING

The Basis of Bearing remains Alaska State Plane Zone 1 Grid Bearings, determined by high-precision GPS receivers differentially corrected and processed, with data to NGS CORS Stations, using Trimble Business Center, Version 3.70 software.

All bearings shown, except as noted, are Alaska State Plane Zone 1 grid bearings. All bearings are based on Quad Navigation Satellite System technology in the NAD 83 (2011) Epoch 2010.0000 datum, using Trimble R10 and RB-2 receivers, differentially corrected and processed with Trimble Business Center, version 3.70 software. These bearings are oriented to grid north of Monument 2018. Distances shown are reduced to horizontal field distances.

DISTANCES

All distances shown are reduced to horizontal ground distances unless otherwise noted.

ACCURACY

The error of closure of this survey does not exceed 1:5000, and/or corner positions have a Relative Precision Accuracy of the 95 percent confidence level of 0.13 plus 100 parts per million, or better.

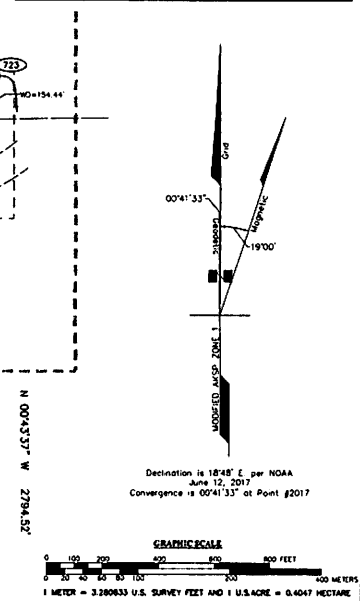
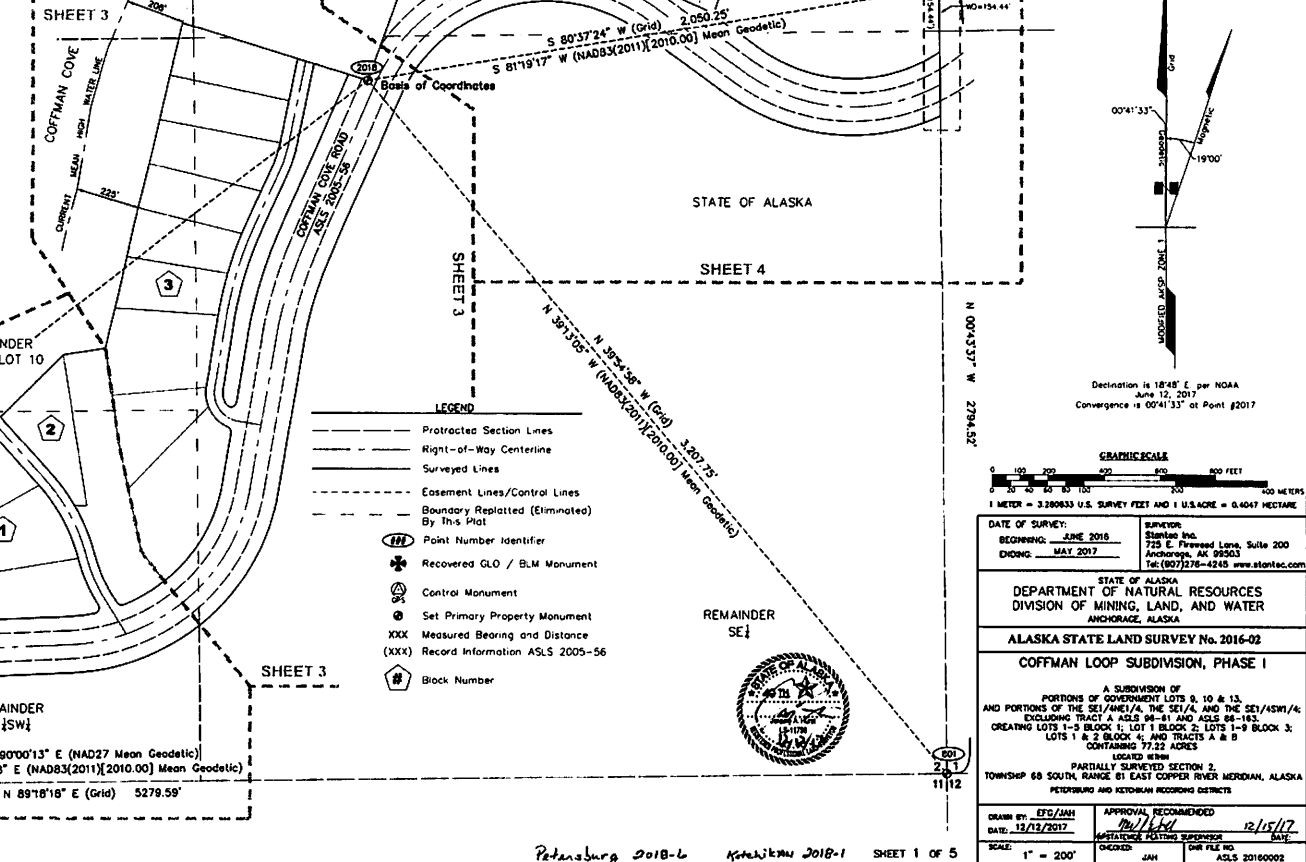
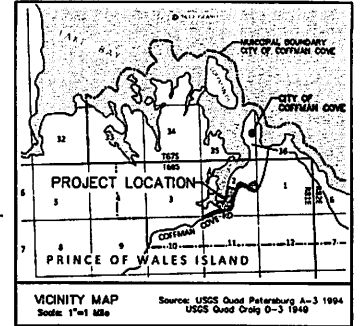
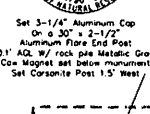
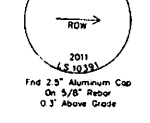
Point #	Alaska State Plane Zone 1 NAD83 (2011) [2010.00]		Geodetic NAD83 (2011) [2010.00]		Geodetic NAD27	
	Northing	Easting	Latitude	Longitude	Latitude	Longitude
2018	1523271.001	2855759.820	56°00'07.19336" N	132°50'13.7698" W	56°00'08.51476" N	132°50'07.08909" W
723	1523604.998	2857782.440	56°00'10.24410" N	132°49'37.53133" W	56°00'11.56216" N	132°49'31.44121" W
801	1520810.981	2857817.885	55°59'42.70408" N	132°49'37.51024" W	55°59'44.02345" N	132°49'31.42314" W
802	1520746.942	2852539.204	55°59'42.70089" N	132°51'10.34861" W	55°59'44.02342" N	132°51'04.26682" W

NOTES

- This survey of ADL 108055 was accomplished in accordance with AS 38.04.045, CSC 810 and 551 2016-02.
- Building setbacks are to conform to City of Coffman Cove ordinances.
- All dimensions, coordinates, and elevations shown are in U.S. Survey Feet unless otherwise noted.
- Monumentation and control points shown hereon were surveyed using a combination of retracked static GNSS techniques and conventional surveying methods with redundant measurements. Measurements were performed using Trimble R10, RB-3 and RB-2 GNSS receivers, Leica CR102 total stations and processed using Trimble Business Center v3.70 office software.
- All parcels of land owned by the State of Alaska, located within 50.00 feet of, or bisected by a surveyed or protracted section line, are subject to a fifty-foot (50') easement; each side of the section line, which is reserved to the State of Alaska for public highways under A.S. 19.10.010.
- The geodetic position of the record monument (MC Point No. 723) measuring the quarter corner position on the Section Line common to Sections 1 & 2, as well as the geodetic positions of the southeast and southwest corners of Section 2 were established based on record NAD 27 values (latitudes and longitudes) computed from the official projection diagram Grid No. CR-15-13 approved by DMR on January 5, 1969 and approved by BLM on March 24, 1980. Said NAD 27 values were converted to NAD 83 using National Geodetic Survey (NGS) NADCON Datum Conversion software. The protracted NAD 83 values for Section 2 were then translated to a local ground coordinate system, based on the measured NAD 83 values (field this survey), at each MC monument.
- Direct access to Lots 1 and 2, Block 4, is via the platfiled Sea Otter Drive. Access to all other lots is via the platfiled rights-of-way. No direct access to the Coffman Cove Road is permitted from any lot.
- Lot 2, Block 4 contains apparent wetlands. A Corps of Engineers Wetland Permit may be required to develop any wetland areas. There is a 50-foot wide building setback from wetland areas.

TYPICAL RECOVERED MONUMENT

COFFMAN COVE ROAD

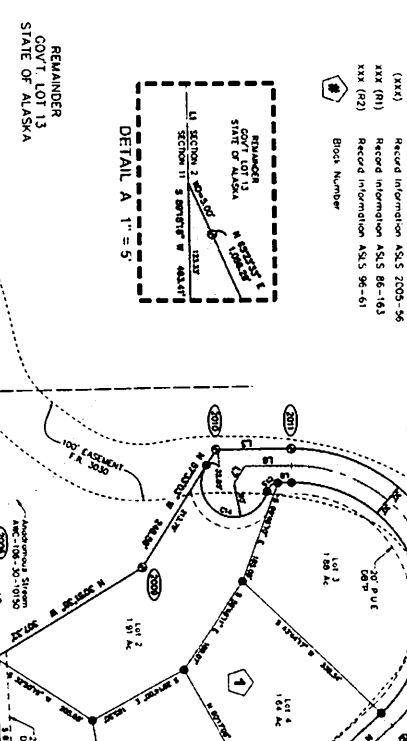


DATE OF SURVEY: <u>JUNE 2018</u>	SURVEYOR: <u>Stanton Inc.</u>
RECORDING: <u>MAY 2017</u>	ADDRESS: <u>725 E. Fremont Lane, Suite 200 Anchorage, AK 99503</u>
PHONE: <u>MAY 2017</u>	TEL: <u>(907)278-4248 www.stanton.com</u>
STATE OF ALASKA DEPARTMENT OF NATURAL RESOURCES DIVISION OF MINING, LAND, AND WATER ANCHORAGE, ALASKA	
ALASKA STATE LAND SURVEY No. 2016-02 COFFMAN LOOP SUBDIVISION, PHASE I	
A SUBDIVISION OF PORTIONS OF GOVERNMENT LOTS 9, 10 & 13, AND PORTIONS OF THE SE1/4NE1/4, THE SE1/4, AND THE SE1/4SW1/4, EXCLUDING TRACT A ASLS 94-81 AND ASLS 84-183, CREATING LOTS 1-3 BLOCK 1; LOT 1 BLOCK 2; LOTS 1-8 BLOCK 3; LOTS 1 & 2 BLOCK 4; AND TRACTS A & B CONTAINING 77.22 ACRES LOCATED WITHIN PARTIALLY SURVEYED SECTION 2, TOWNSHIP 68 SOUTH, RANGE 41 EAST CROSS RIVER MERIDIAN, ALASKA PETERSBURG AND KETCHIKAN RECORDING DISTRICTS	
DRAWN BY: <u>EPS/JAH</u>	APPROVAL, RECOMMENDED: <u>[Signature]</u>
DATE: <u>12/13/2017</u>	DATE: <u>12/15/17</u>
SCALE: 1" = 200'	CHECKED: <u>JAH</u> DMR FILE NO.: <u>ASLS 20160002</u>

Curve #	Length	Bearing	Curve Data	Chord Bearing	Chord Length
C1	54.97'	N 44.81° E	0.0250'	N 47.51° E	54.83'
C2	71.69'	N 44.81° E	0.0250'	N 47.51° E	71.69'
C3	140.91'	N 44.81° E	0.0250'	N 47.51° E	140.91'
C4	478.87'	N 44.81° E	0.0250'	N 47.51° E	478.87'
C5	814.04'	N 44.81° E	0.0250'	N 47.51° E	814.04'
C6	1148.21'	N 44.81° E	0.0250'	N 47.51° E	1148.21'
C7	1482.38'	N 44.81° E	0.0250'	N 47.51° E	1482.38'
C8	1816.55'	N 44.81° E	0.0250'	N 47.51° E	1816.55'
C9	2150.72'	N 44.81° E	0.0250'	N 47.51° E	2150.72'
C10	2484.89'	N 44.81° E	0.0250'	N 47.51° E	2484.89'
C11	2819.06'	N 44.81° E	0.0250'	N 47.51° E	2819.06'
C12	3153.23'	N 44.81° E	0.0250'	N 47.51° E	3153.23'
C13	3487.40'	N 44.81° E	0.0250'	N 47.51° E	3487.40'
C14	3821.57'	N 44.81° E	0.0250'	N 47.51° E	3821.57'
C15	4155.74'	N 44.81° E	0.0250'	N 47.51° E	4155.74'
C16	4489.91'	N 44.81° E	0.0250'	N 47.51° E	4489.91'
C17	4824.08'	N 44.81° E	0.0250'	N 47.51° E	4824.08'
C18	5158.25'	N 44.81° E	0.0250'	N 47.51° E	5158.25'
C19	5492.42'	N 44.81° E	0.0250'	N 47.51° E	5492.42'
C20	5826.59'	N 44.81° E	0.0250'	N 47.51° E	5826.59'
C21	6160.76'	N 44.81° E	0.0250'	N 47.51° E	6160.76'
C22	6494.93'	N 44.81° E	0.0250'	N 47.51° E	6494.93'
C23	6829.10'	N 44.81° E	0.0250'	N 47.51° E	6829.10'
C24	7163.27'	N 44.81° E	0.0250'	N 47.51° E	7163.27'

- LEGEND**
- Protected Section Lines
 - Right-of-Way Centerline
 - Surveyed Lines
 - Easement Lines/Convey Lines
 - Right-of-Way Delineated By This Plat (RLRP)
 - Point Number Identifier
 - Recorded Q.O. / B.I.W. Monument
 - Recorded Primary Monument
 - Recorded Secondary Monument
 - Set Contour Monument
 - Set Primary Property Monument
 - Set Secondary Property Monument
 - Public Utility Easement
 - Reference Monument
 - Recorded Bearing and Distance
 - Record Information A.S.L.S. 7003-06
 - Record Information A.S.L.S. 86-163
 - Record Information A.S.L.S. 96-61
 - Point Number

Line #	Direction	Length
L1	S 89°18'18" W	243.9'
L2	N 87°31'57" E	224.70'
L3	N 60°13'25" E	134.44'
L4	N 31°27'24" E	138.15'
L5	N 80°02'07" E	43.11'
L6	S 60°32'37" E	82.51'
L7	S 87°31'07" E	234.14'
L8	N 80°29'32" E	218.17'
L9	S 37°29'17" E	124.05'



DETAIL A 1" = 5'

REMAINDER
GOVT LOT 13
STATE OF ALASKA

DETAIL B 1" = 10'

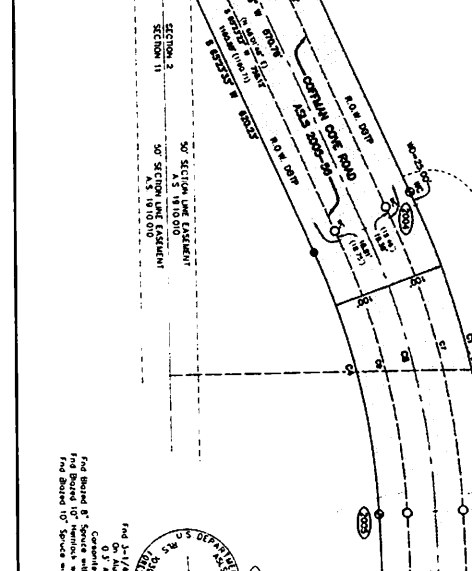
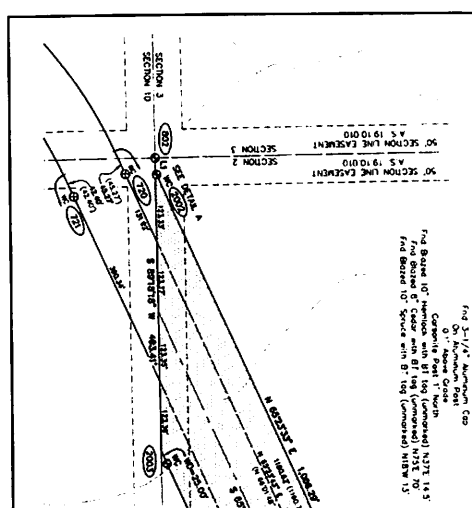
REMAINDER
GOVT LOT 10
STATE OF ALASKA

DETAIL C 1" = 1'

REMAINDER
GOVT LOT 11
STATE OF ALASKA

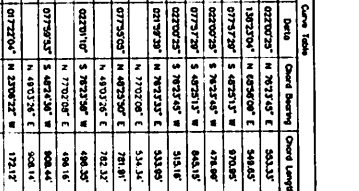
DETAIL D 1" = 1'

REMAINDER
GOVT LOT 9
STATE OF ALASKA



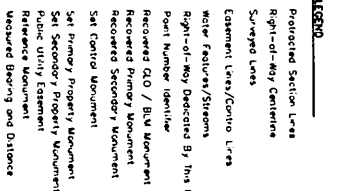
TYPICAL PROPERTY MONUMENT SET POINT

ASLS 2016-07



TYPICAL SECONDARY MONUMENT SET POINT

ASLS 2016-07



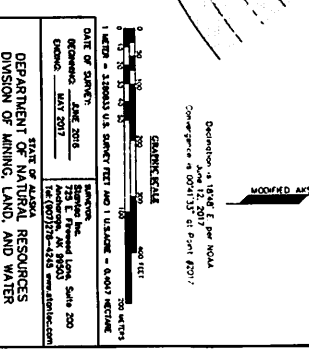
DATE OF SURVEY: APRIL 2017

SURVEYOR: JAMES W. WATSON, LICENSE NO. 4213

STATE OF ALASKA
DEPARTMENT OF NATURAL RESOURCES
DIVISION OF MINING, LAND, AND WATER
ALASKA STATE LAND SURVEY NO. 2016-03
COFTMAN LOOP SUBDIVISION, PHASE I

A SUBDIVISION OF THE SURVEY OF THE STATE AND THE SE1/4SW1/4 AND PORTIONS OF THE SE1/4SW1/4, THE SW1/4 AND THE SE1/4SW1/4 CRENSHAW LOTS 1-4, BLOCK 1, LOT 1-BLOCK 2, LOT 1-4-BLOCK 3, LOTS 1-6, 1-BLOCK 4, AND TRACTS A & B

APPROVED BY: [Signature]



DATE OF SURVEY: APRIL 2017

SURVEYOR: JAMES W. WATSON, LICENSE NO. 4213

STATE OF ALASKA
DEPARTMENT OF NATURAL RESOURCES
DIVISION OF MINING, LAND, AND WATER
ALASKA STATE LAND SURVEY NO. 2016-03
COFTMAN LOOP SUBDIVISION, PHASE I

A SUBDIVISION OF THE SURVEY OF THE STATE AND THE SE1/4SW1/4 AND PORTIONS OF THE SE1/4SW1/4, THE SW1/4 AND THE SE1/4SW1/4 CRENSHAW LOTS 1-4, BLOCK 1, LOT 1-BLOCK 2, LOT 1-4-BLOCK 3, LOTS 1-6, 1-BLOCK 4, AND TRACTS A & B

APPROVED BY: [Signature]

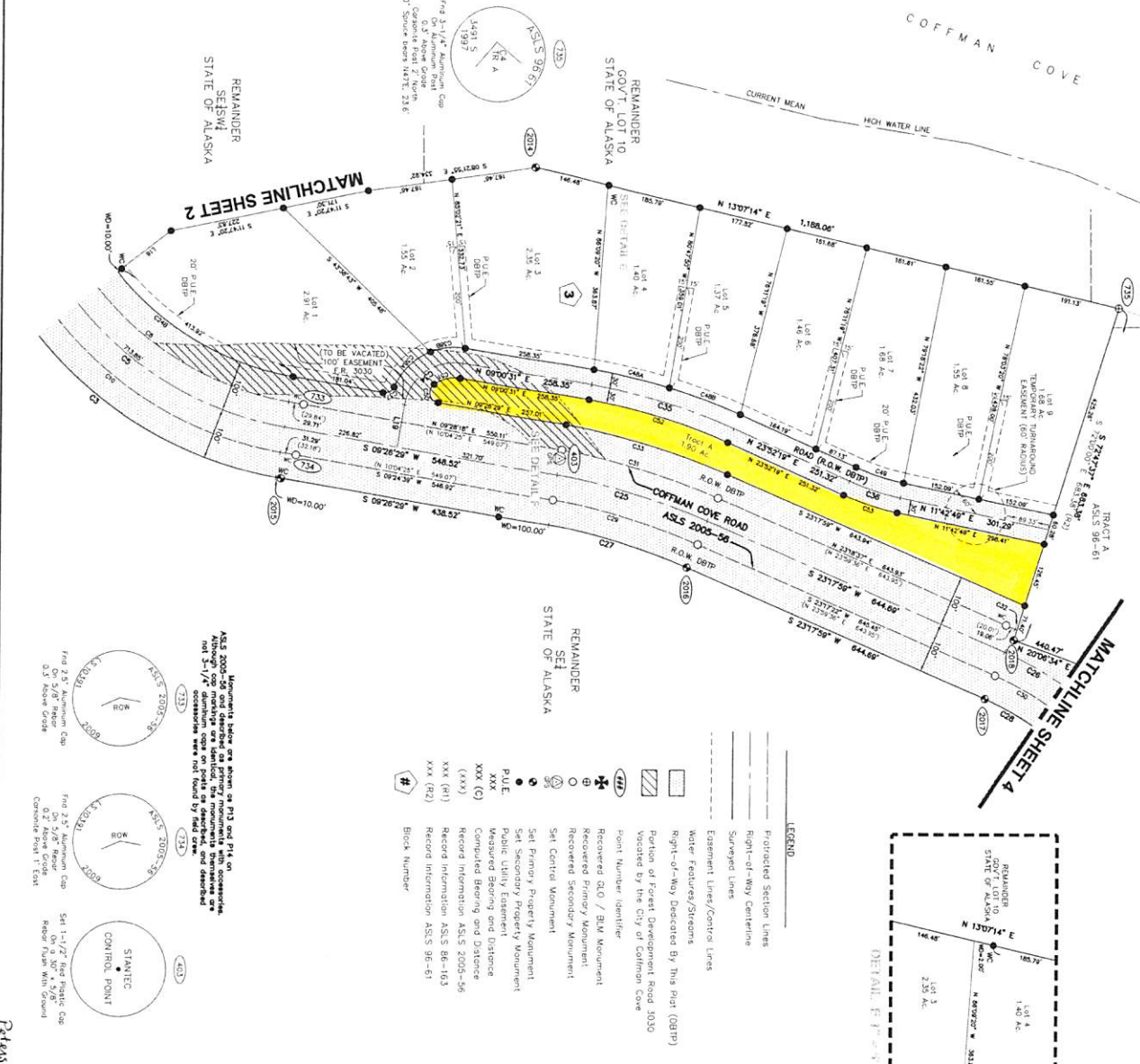
DATE OF SURVEY: APRIL 2017

SURVEYOR: JAMES W. WATSON, LICENSE NO. 4213

STATE OF ALASKA
DEPARTMENT OF NATURAL RESOURCES
DIVISION OF MINING, LAND, AND WATER
ALASKA STATE LAND SURVEY NO. 2016-03
COFTMAN LOOP SUBDIVISION, PHASE I

A SUBDIVISION OF THE SURVEY OF THE STATE AND THE SE1/4SW1/4 AND PORTIONS OF THE SE1/4SW1/4, THE SW1/4 AND THE SE1/4SW1/4 CRENSHAW LOTS 1-4, BLOCK 1, LOT 1-BLOCK 2, LOT 1-4-BLOCK 3, LOTS 1-6, 1-BLOCK 4, AND TRACTS A & B

APPROVED BY: [Signature]

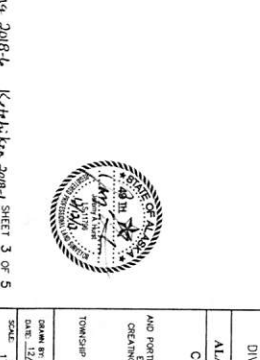


Remainder
SE1SW4
STATE OF ALASKA

Remainder
SE1
STATE OF ALASKA

ASLS 2003-56 and described as primary monuments with accessories, not 3-1/2" diameter caps or pipes as described, and described as follows:

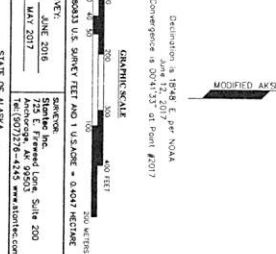
- Monument below on apex of P13 and P14 on ASLS 2003-56
- Monument below on apex of P15 on ASLS 2003-56
- Monument below on apex of P16 on ASLS 2003-56
- Monument below on apex of P17 on ASLS 2003-56
- Monument below on apex of P18 on ASLS 2003-56
- Monument below on apex of P19 on ASLS 2003-56
- Monument below on apex of P20 on ASLS 2003-56
- Monument below on apex of P21 on ASLS 2003-56
- Monument below on apex of P22 on ASLS 2003-56
- Monument below on apex of P23 on ASLS 2003-56
- Monument below on apex of P24 on ASLS 2003-56
- Monument below on apex of P25 on ASLS 2003-56
- Monument below on apex of P26 on ASLS 2003-56
- Monument below on apex of P27 on ASLS 2003-56
- Monument below on apex of P28 on ASLS 2003-56
- Monument below on apex of P29 on ASLS 2003-56
- Monument below on apex of P30 on ASLS 2003-56
- Monument below on apex of P31 on ASLS 2003-56
- Monument below on apex of P32 on ASLS 2003-56
- Monument below on apex of P33 on ASLS 2003-56
- Monument below on apex of P34 on ASLS 2003-56
- Monument below on apex of P35 on ASLS 2003-56
- Monument below on apex of P36 on ASLS 2003-56
- Monument below on apex of P37 on ASLS 2003-56
- Monument below on apex of P38 on ASLS 2003-56
- Monument below on apex of P39 on ASLS 2003-56
- Monument below on apex of P40 on ASLS 2003-56
- Monument below on apex of P41 on ASLS 2003-56
- Monument below on apex of P42 on ASLS 2003-56
- Monument below on apex of P43 on ASLS 2003-56
- Monument below on apex of P44 on ASLS 2003-56
- Monument below on apex of P45 on ASLS 2003-56
- Monument below on apex of P46 on ASLS 2003-56
- Monument below on apex of P47 on ASLS 2003-56
- Monument below on apex of P48 on ASLS 2003-56
- Monument below on apex of P49 on ASLS 2003-56
- Monument below on apex of P50 on ASLS 2003-56
- Monument below on apex of P51 on ASLS 2003-56
- Monument below on apex of P52 on ASLS 2003-56
- Monument below on apex of P53 on ASLS 2003-56
- Monument below on apex of P54 on ASLS 2003-56
- Monument below on apex of P55 on ASLS 2003-56
- Monument below on apex of P56 on ASLS 2003-56
- Monument below on apex of P57 on ASLS 2003-56
- Monument below on apex of P58 on ASLS 2003-56
- Monument below on apex of P59 on ASLS 2003-56
- Monument below on apex of P60 on ASLS 2003-56
- Monument below on apex of P61 on ASLS 2003-56
- Monument below on apex of P62 on ASLS 2003-56
- Monument below on apex of P63 on ASLS 2003-56
- Monument below on apex of P64 on ASLS 2003-56
- Monument below on apex of P65 on ASLS 2003-56
- Monument below on apex of P66 on ASLS 2003-56
- Monument below on apex of P67 on ASLS 2003-56
- Monument below on apex of P68 on ASLS 2003-56
- Monument below on apex of P69 on ASLS 2003-56
- Monument below on apex of P70 on ASLS 2003-56
- Monument below on apex of P71 on ASLS 2003-56
- Monument below on apex of P72 on ASLS 2003-56
- Monument below on apex of P73 on ASLS 2003-56
- Monument below on apex of P74 on ASLS 2003-56
- Monument below on apex of P75 on ASLS 2003-56
- Monument below on apex of P76 on ASLS 2003-56
- Monument below on apex of P77 on ASLS 2003-56
- Monument below on apex of P78 on ASLS 2003-56
- Monument below on apex of P79 on ASLS 2003-56
- Monument below on apex of P80 on ASLS 2003-56
- Monument below on apex of P81 on ASLS 2003-56
- Monument below on apex of P82 on ASLS 2003-56
- Monument below on apex of P83 on ASLS 2003-56
- Monument below on apex of P84 on ASLS 2003-56
- Monument below on apex of P85 on ASLS 2003-56
- Monument below on apex of P86 on ASLS 2003-56
- Monument below on apex of P87 on ASLS 2003-56
- Monument below on apex of P88 on ASLS 2003-56
- Monument below on apex of P89 on ASLS 2003-56
- Monument below on apex of P90 on ASLS 2003-56
- Monument below on apex of P91 on ASLS 2003-56
- Monument below on apex of P92 on ASLS 2003-56
- Monument below on apex of P93 on ASLS 2003-56
- Monument below on apex of P94 on ASLS 2003-56
- Monument below on apex of P95 on ASLS 2003-56
- Monument below on apex of P96 on ASLS 2003-56
- Monument below on apex of P97 on ASLS 2003-56
- Monument below on apex of P98 on ASLS 2003-56
- Monument below on apex of P99 on ASLS 2003-56
- Monument below on apex of P100 on ASLS 2003-56



Legend

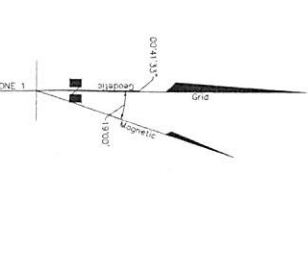
- Protected Section Lines
- Right-of-Way Centerlines
- Surveyed Lines
- Easement Lines/Control Lines
- Water Features/Streams
- Right-of-Way Dedicated By This Plat (OBTP)
- Portion of Forest Development Road 1030
- Voted by the City of Coffman Cove
- Point Number Identifier
- Recovered PLO / BLM Monument
- Recovered Primary Monument
- Recovered Secondary Monument
- Set Central Monument
- Set Primary Property Monument
- Set Secondary Property Monument
- Public Utility Easement
- Measured Bearing and Distance
- Computed Bearing and Distance
- Record Information ASLS 2003-56
- Record Information ASLS 2005-56
- Record Information ASLS 86-163
- Record Information ASLS 96-61
- Block Number

Curve #	Length	Radius	Delta	Chord Bearing	Chord Length
C01	1050.10'	771.78'	07°27'23"	S 48°25'13" W	970.92'
C3	914.04'	671.78'	07°27'23"	S 48°25'13" W	845.15'
C8	645.56'	621.78'	07°27'23"	N 48°25'06" E	781.91'
(C10)	645.11'	621.78'		N 49°03'46" E	782.32'
(C11)	645.26'	721.78'	07°29'53"	S 48°25'06" E	908.14'
(C12)	643.92'	721.78'		N 49°03'46" E	908.14'
C24	413.92'	571.78'	04°18'29"	S 30°10'49" W	404.94'
C28	310.46'	1284.80'	02°54'00"	S 19°22'14" W	310.01'
C27	1160.46'	662.80'	102°54'00"	S 74°45'00" W	1203.80'
C28	1160.46'	662.80'	02°54'00"	S 74°45'00" W	1203.80'
C27	288.57'	1184.80'	02°54'00"	S 16°27'14" W	283.89'
C28	1,010.89'	562.80'	102°54'00"	S 74°45'00" W	860.39'
(C29)	293.99'	1234.80'	02°54'00"	S 19°22'14" W	288.37'
(C30)	1160.46'	662.80'	102°54'00"	N 17°02'00" E	293.25'
(C31)	322.40'	1234.80'	02°54'00"	N 16°27'27" E	321.61'
(C31)	324.28'	1234.80'		N 17°02'00" E	323.40'
C32	437'	712.80'	00°02'00"	N 23°23'45" E	437'
C33	334.95'	1284.80'	02°54'00"	S 19°22'14" W	334.95'
C34	164.36'	100.00'	068°20'13"	N 33°27'06" W	140.91'
C35	292.99'	1144.00'	04°51'46"	N 16°28'25" E	293.18'
C36	196.10'	500.00'	02°29'30"	N 17°24'34" E	195.99'
C37	26.65'	20.00'	07°20'18"	N 28°14'00" W	24.72'
C38A	102.22'	130.00'	04°03'14"	N 44°21'07" W	99.61'
C38B	70.00'	130.00'	00°01'00"	N 63°02'00" W	69.60'
C38C	153.78'	1171.00'	00°31'30"	N 12°46'14" E	153.88'
C48B	150.00'	007°20'22"	N 17°47'34" E	149.80'	
C49	99.74'	479.00'	02°29'30"	N 17°47'34" E	99.53'
C50	4717'	20.00'	135°07'04"	S 77°00'00" W	34.97'
C51	84.31'	70.00'	044°28'46"	N 131°28'50" W	52.82'
C52	288.21'	1111.00'	044°51'46"	N 16°28'25" E	287.40'
C53	1124.47'	530.00'	023°29'30"	N 17°47'34" E	1122.95'



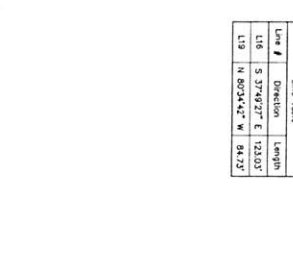
Legend

- Protected Section Lines
- Right-of-Way Centerlines
- Surveyed Lines
- Easement Lines/Control Lines
- Water Features/Streams
- Right-of-Way Dedicated By This Plat (OBTP)
- Portion of Forest Development Road 1030
- Voted by the City of Coffman Cove
- Point Number Identifier
- Recovered PLO / BLM Monument
- Recovered Primary Monument
- Recovered Secondary Monument
- Set Central Monument
- Set Primary Property Monument
- Set Secondary Property Monument
- Public Utility Easement
- Measured Bearing and Distance
- Computed Bearing and Distance
- Record Information ASLS 2003-56
- Record Information ASLS 2005-56
- Record Information ASLS 86-163
- Record Information ASLS 96-61
- Block Number



Legend

- Protected Section Lines
- Right-of-Way Centerlines
- Surveyed Lines
- Easement Lines/Control Lines
- Water Features/Streams
- Right-of-Way Dedicated By This Plat (OBTP)
- Portion of Forest Development Road 1030
- Voted by the City of Coffman Cove
- Point Number Identifier
- Recovered PLO / BLM Monument
- Recovered Primary Monument
- Recovered Secondary Monument
- Set Central Monument
- Set Primary Property Monument
- Set Secondary Property Monument
- Public Utility Easement
- Measured Bearing and Distance
- Computed Bearing and Distance
- Record Information ASLS 2003-56
- Record Information ASLS 2005-56
- Record Information ASLS 86-163
- Record Information ASLS 96-61
- Block Number

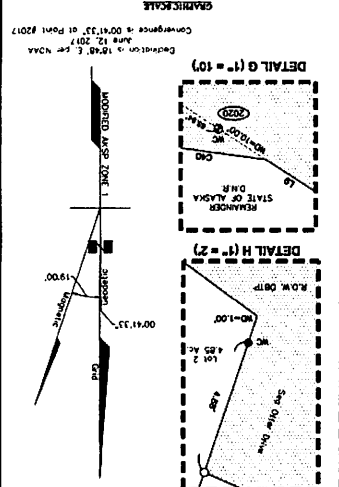


ALASKA STATE LAND SURVEY NO. 2016-02
COFFMAN LOOP SUBDIVISION, PHASE 1

STATE OF ALASKA
 DEPARTMENT OF NATURAL RESOURCES
 DIVISION OF MINING, LAND, AND WATER
 ANCHORAGE, ALASKA

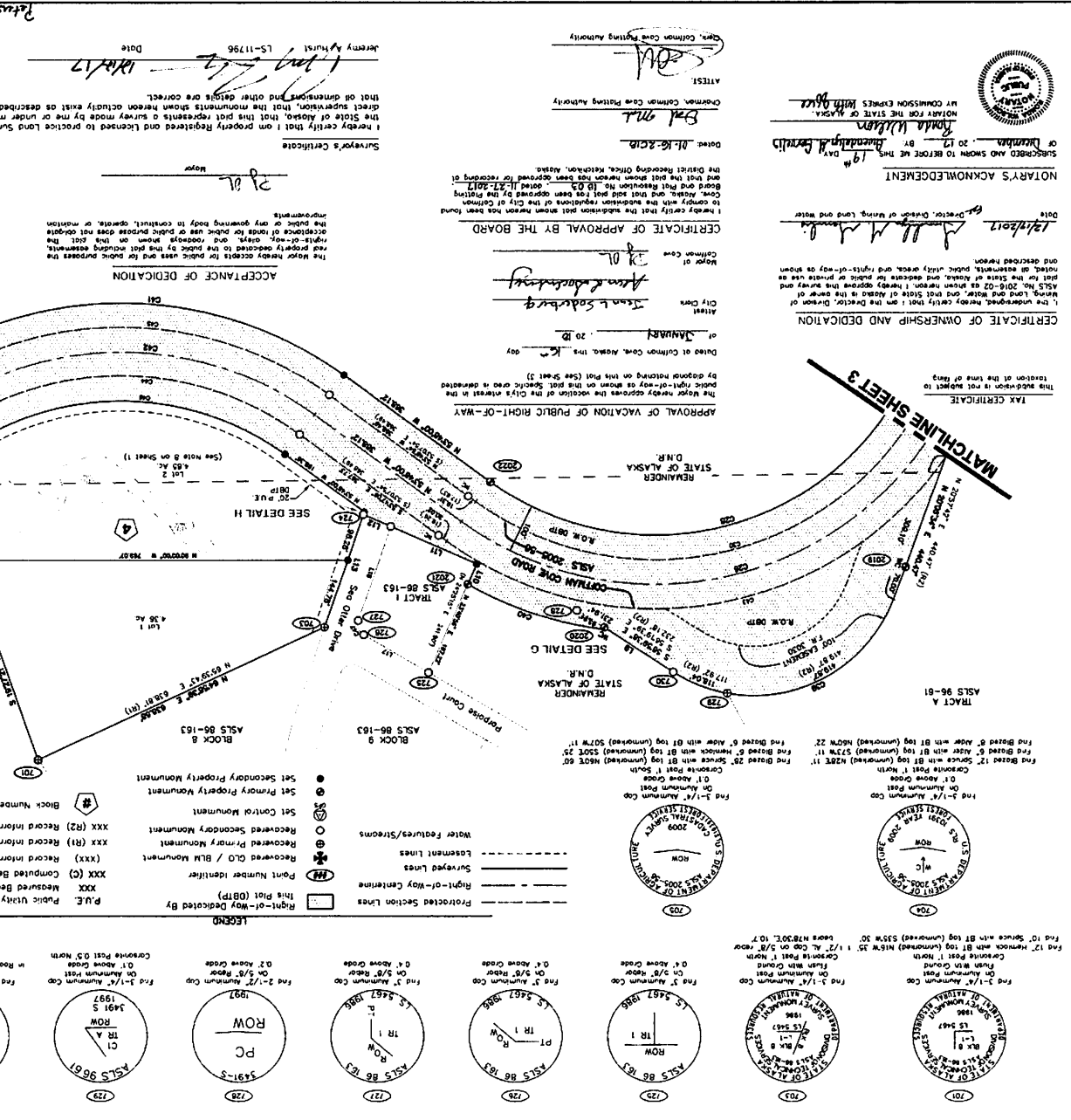
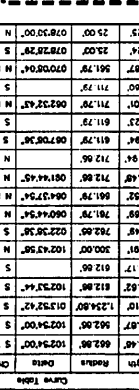
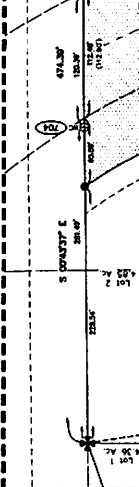
DATE OF SURVEY: **MAY 2017**
 DEDICATION: **ALASKA 2016**
 DRAWING: **ASLS 96-163**

SECTION 34, T12N, R10W, S16E
 SECTION 35, T12N, R10W, S16E
 SECTION 36, T12N, R10W, S16E



Curve Table

Curve #	Length	Radius	Delta Bearing	Chord Length
C28	1,180.67'	62,896'	102°34'00"	1,036.88'
C29	1,010.67'	62,896'	102°34'00"	880.38'
C30	298.01'	1,234.80'	013°32'42"	288.37'
C31	794.00'	1,234.80'	013°32'42"	730.35'
C32	301.48'	62,896'	022°32'36"	289.83'
C33	527.67'	324.00'	071°32'37"	466.88'
C34	1,100.17'	62,896'	102°34'00"	958.42'
C35	1,100.17'	62,896'	102°34'00"	958.42'
C36	1,000.67'	62,896'	102°34'00"	880.38'
C37	1,180.67'	62,896'	102°34'00"	1,036.88'
C38	1,180.67'	62,896'	102°34'00"	1,036.88'
C39	1,180.67'	62,896'	102°34'00"	1,036.88'
C40	1,180.67'	62,896'	102°34'00"	1,036.88'
C41	1,180.67'	62,896'	102°34'00"	1,036.88'
C42	1,180.67'	62,896'	102°34'00"	1,036.88'
C43	1,180.67'	62,896'	102°34'00"	1,036.88'
C44	1,180.67'	62,896'	102°34'00"	1,036.88'
C45	1,180.67'	62,896'	102°34'00"	1,036.88'
C46	687.87'	62,896'	078°28'36"	645.54'
C47	34.24'	35.00'	078°28'36"	31.87'
C48	687.87'	62,896'	078°28'36"	645.54'
C49	775.67'	62,896'	078°28'36"	737.79'
C50	775.67'	62,896'	078°28'36"	737.79'
C51	775.67'	62,896'	078°28'36"	737.79'
C52	775.67'	62,896'	078°28'36"	737.79'
C53	775.67'	62,896'	078°28'36"	737.79'
C54	775.67'	62,896'	078°28'36"	737.79'
C55	775.67'	62,896'	078°28'36"	737.79'
C56	775.67'	62,896'	078°28'36"	737.79'
C57	775.67'	62,896'	078°28'36"	737.79'
C58	775.67'	62,896'	078°28'36"	737.79'
C59	775.67'	62,896'	078°28'36"	737.79'
C60	775.67'	62,896'	078°28'36"	737.79'
C61	775.67'	62,896'	078°28'36"	737.79'
C62	775.67'	62,896'	078°28'36"	737.79'
C63	775.67'	62,896'	078°28'36"	737.79'
C64	775.67'	62,896'	078°28'36"	737.79'
C65	775.67'	62,896'	078°28'36"	737.79'
C66	775.67'	62,896'	078°28'36"	737.79'
C67	775.67'	62,896'	078°28'36"	737.79'
C68	775.67'	62,896'	078°28'36"	737.79'
C69	775.67'	62,896'	078°28'36"	737.79'
C70	775.67'	62,896'	078°28'36"	737.79'



ACCEPTANCE OF DEDICATION

The Mayor hereby accepts for public use and for public purposes the right-of-way, easements, and other interests shown on this plat. The public use and purposes are as shown on this plat. The Mayor hereby certifies that the monuments shown hereon actually exist as described, and that the dimensions and other details are correct.

Mayor: *[Signature]*

CERTIFICATE OF APPROVAL BY THE BOARD

I hereby certify that the subdivision shown hereon has been approved by the Board of Commissioners of the City of Anchorage, Alaska, and that the plat shown hereon has been approved for recording in the Office of the City Clerk, Anchorage, Alaska, and that the plat shown hereon has been approved for recording in the Office of the City Clerk, Anchorage, Alaska.

City Clerk: *[Signature]*

APPROVAL OF VACATION OF PUBLIC RIGHT-OF-WAY

The Mayor hereby approves the vacation of the City's interest in the public right-of-way shown on this plat. The public right-of-way is as shown on this plat. The Mayor hereby certifies that the monuments shown hereon actually exist as described, and that the dimensions and other details are correct.

Mayor: *[Signature]*

TAX CERTIFICATE

This subdivision is not subject to taxation at the time of filing.

Date: *[Date]*

NOTARY'S ACKNOWLEDGEMENT

I, the undersigned, hereby certify that I am the Director, Division of Mining, Land and Water, State of Alaska, and that the plat shown hereon has been approved for recording in the Office of the City Clerk, Anchorage, Alaska, and that the plat shown hereon has been approved for recording in the Office of the City Clerk, Anchorage, Alaska.

Director: *[Signature]*

SURVEYOR'S CERTIFICATE

I hereby certify that I am properly Registered and Licensed to practice Land Surveying in the State of Alaska, that this plat represents a survey made by me or under my direct supervision, that the monuments shown hereon actually exist as described, and that the dimensions and other details are correct.

Surveyor: *[Signature]*

CERTIFICATE OF APPROVAL BY THE BOARD

I hereby certify that the subdivision shown hereon has been approved by the Board of Commissioners of the City of Anchorage, Alaska, and that the plat shown hereon has been approved for recording in the Office of the City Clerk, Anchorage, Alaska, and that the plat shown hereon has been approved for recording in the Office of the City Clerk, Anchorage, Alaska.

City Clerk: *[Signature]*

APPROVAL OF VACATION OF PUBLIC RIGHT-OF-WAY

The Mayor hereby approves the vacation of the City's interest in the public right-of-way shown on this plat. The public right-of-way is as shown on this plat. The Mayor hereby certifies that the monuments shown hereon actually exist as described, and that the dimensions and other details are correct.

Mayor: *[Signature]*

TAX CERTIFICATE

This subdivision is not subject to taxation at the time of filing.

Date: *[Date]*

ALASKA STATE LAND SURVEY NO. 2016-02
COFFMAN LOOP SUBDIVISION, PHASE 1

STATE OF ALASKA
 DEPARTMENT OF NATURAL RESOURCES
 DIVISION OF MINING, LAND, AND WATER
 ANCHORAGE, ALASKA

DATE OF SURVEY: **MAY 2017**
 DEDICATION: **ALASKA 2016**
 DRAWING: **ASLS 96-163**

SECTION 34, T12N, R10W, S16E
 SECTION 35, T12N, R10W, S16E
 SECTION 36, T12N, R10W, S16E

ACCEPTANCE OF DEDICATION

The Mayor hereby accepts for public use and for public purposes the right-of-way, easements, and other interests shown on this plat. The public use and purposes are as shown on this plat. The Mayor hereby certifies that the monuments shown hereon actually exist as described, and that the dimensions and other details are correct.

Mayor: *[Signature]*

CERTIFICATE OF APPROVAL BY THE BOARD

I hereby certify that the subdivision shown hereon has been approved by the Board of Commissioners of the City of Anchorage, Alaska, and that the plat shown hereon has been approved for recording in the Office of the City Clerk, Anchorage, Alaska, and that the plat shown hereon has been approved for recording in the Office of the City Clerk, Anchorage, Alaska.

City Clerk: *[Signature]*

APPROVAL OF VACATION OF PUBLIC RIGHT-OF-WAY

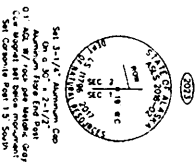
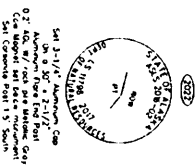
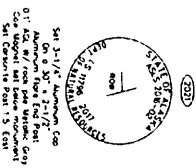
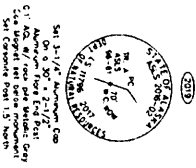
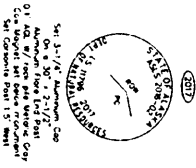
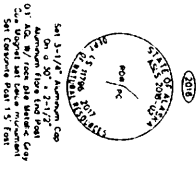
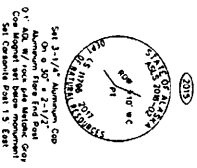
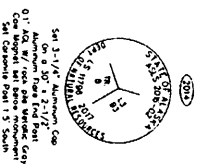
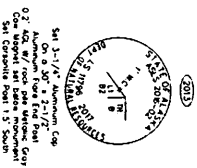
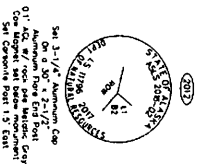
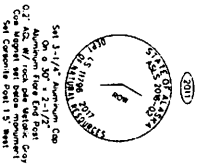
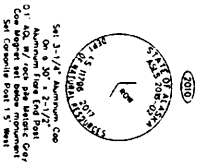
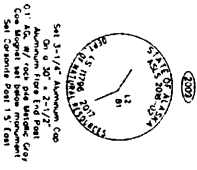
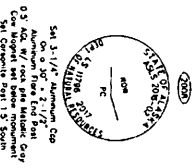
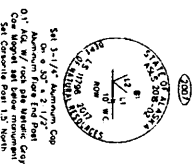
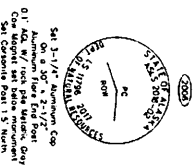
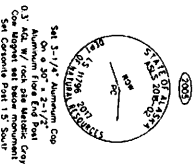
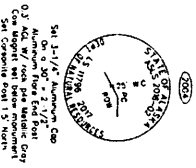
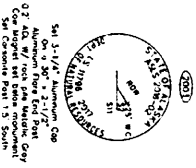
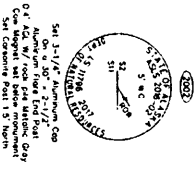
The Mayor hereby approves the vacation of the City's interest in the public right-of-way shown on this plat. The public right-of-way is as shown on this plat. The Mayor hereby certifies that the monuments shown hereon actually exist as described, and that the dimensions and other details are correct.

Mayor: *[Signature]*

TAX CERTIFICATE

This subdivision is not subject to taxation at the time of filing.

Date: *[Date]*



2018-16
Part of
Plat 123-118
Dated 10-14-11

2018-1
Part of
Plat 123-118
Dated 10-14-11



DATE OF SURVEY:	JUNE 2018
BY:	THOMAS R. BURT, REGISTERED SURVEYOR, No. 14768
STATE OF ALASKA	DEPARTMENT OF NATURAL RESOURCES
	DIVISION OF MINING, LAND AND WATER
	ANCHORAGE, ALASKA
ALASKA STATE LAND SURVEY NO. 2018-01	
COFTMAN LOOP SUBDIVISION, PHASE 1	
PARTIAL 1/4 SECTION 2, TOWNSHIP 48 SOUTH, RANGE 01 EAST COFTMAN RIVER WATERSHED, ALASKA	
DATE OF PREVIOUS RECORD:	12/17/12
BY:	JAM
SCALE:	N/A