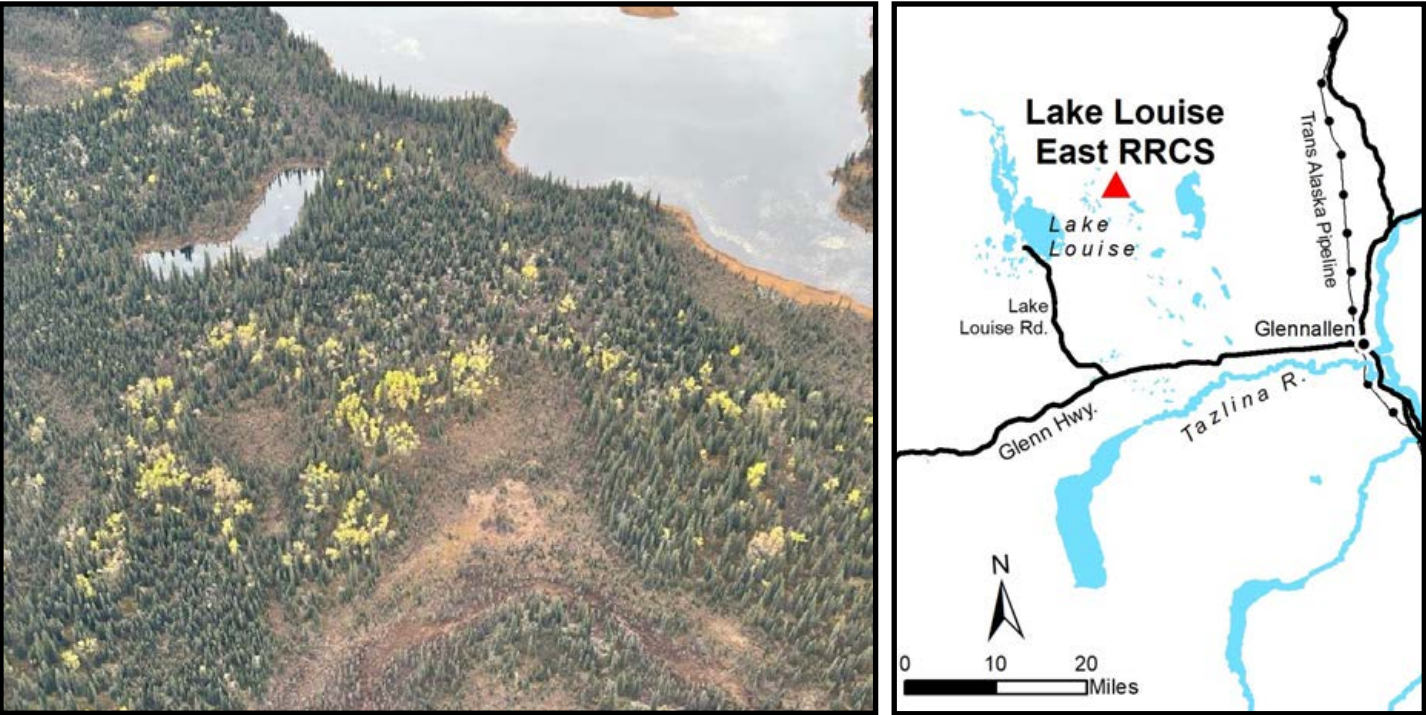
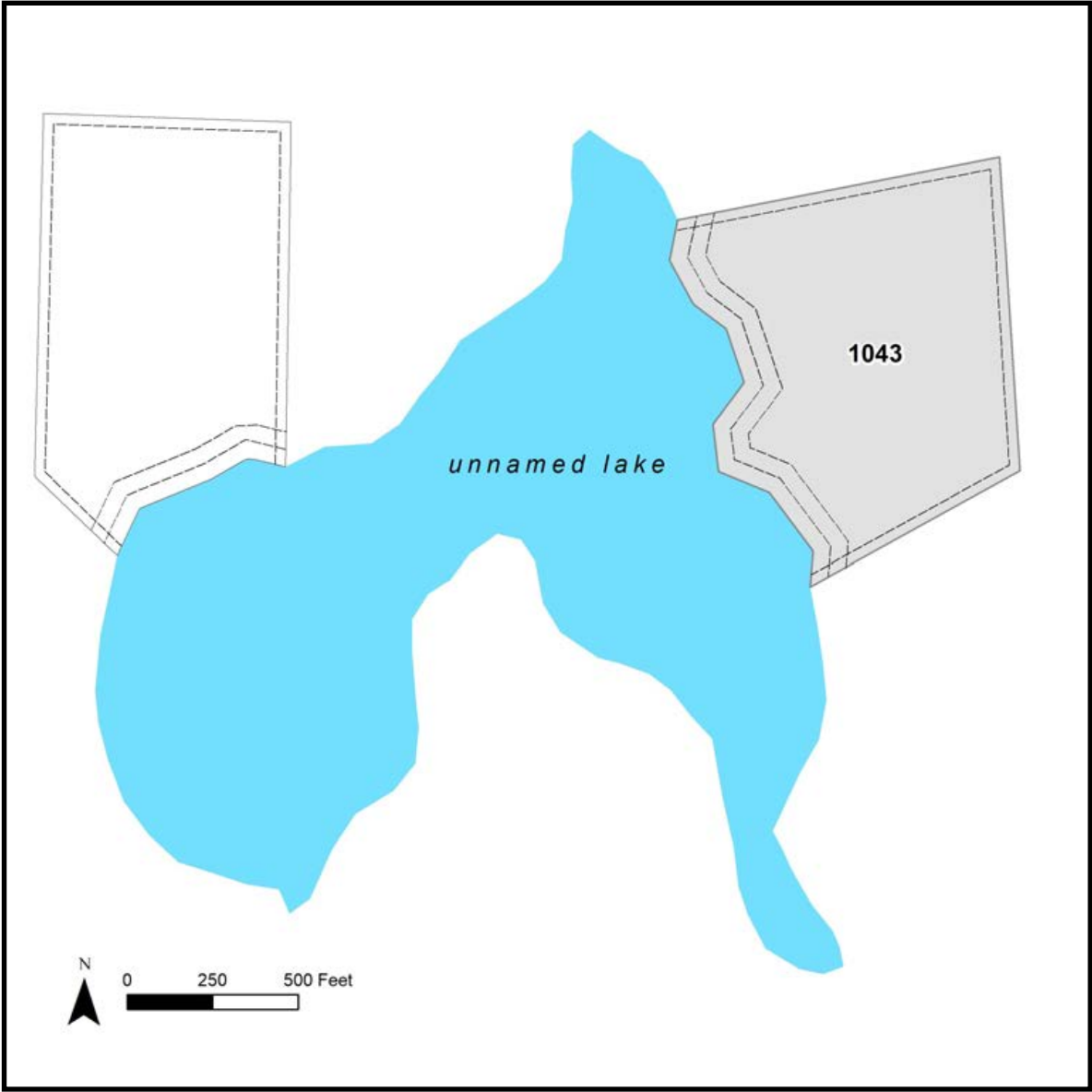


LAKE LOUISE EAST RRCS



Location	Lake Louise East RRCS is approximately 7 miles northeast of the northeastern shoreline of Lake Louise and 31 miles northwest of Glennallen.
Access	Access to the parcel is by float/ ski plane to an unnamed lake northeast of Lake Louise. The parcel is accessed directly from the lake. Winter snowmachine access is also possible.
Utilities	There is no municipal water supply or sewer system. Please see plat notes and the <i>Sewer and Water</i> section of this brochure for details. There are no utilities (electric, phone, internet, etc.) currently in this area.
Local Government	This area is not within the boundaries of an organized borough. It is located within the Unorganized Borough and is subject to the State of Alaska platting authority.
Fire	This area is in the Limited Fire Management Option. See the <i>Wildland Fires and Burn Permits</i> section of this brochure for details.
Notes	These parcels may contain wetlands. Purchasers must obtain permits from the U.S. Army Corps of Engineers before developing any wetland areas.
Restrictions	Easements affecting these parcels, as depicted on the plat, may include, but are not limited to, public access easements. Information on restrictions, easements, reservations, and setbacks may be depicted on the plat, contained in the plat notes, or recorded separately. There is a 50ft public access easement and a 100ft building setback from the ordinary high-water line of the lake. There is also a 30ft public access and utility easement along all other lot lines.
Survey and MTRS	Lake Louise East RRCS is ASLS 2007-23 located in Section 14, Township 7 North, Range 6 West, Copper River Meridian. The survey has been filed as Plat 2011-1 in the Chitina Recording District.
Rights-of-Way	None.



PARCEL #	AK DIVISION OF LANDS (ADL) #	TRACT	ACRES	MINIMUM BID
1043	230244	7	20.00	\$36,000

Note: Maps and photos included in this brochure are for graphic and visual representations only and are intended to be used as a guide. Please see *Land Records, Photos, Plats, and Maps* for details.