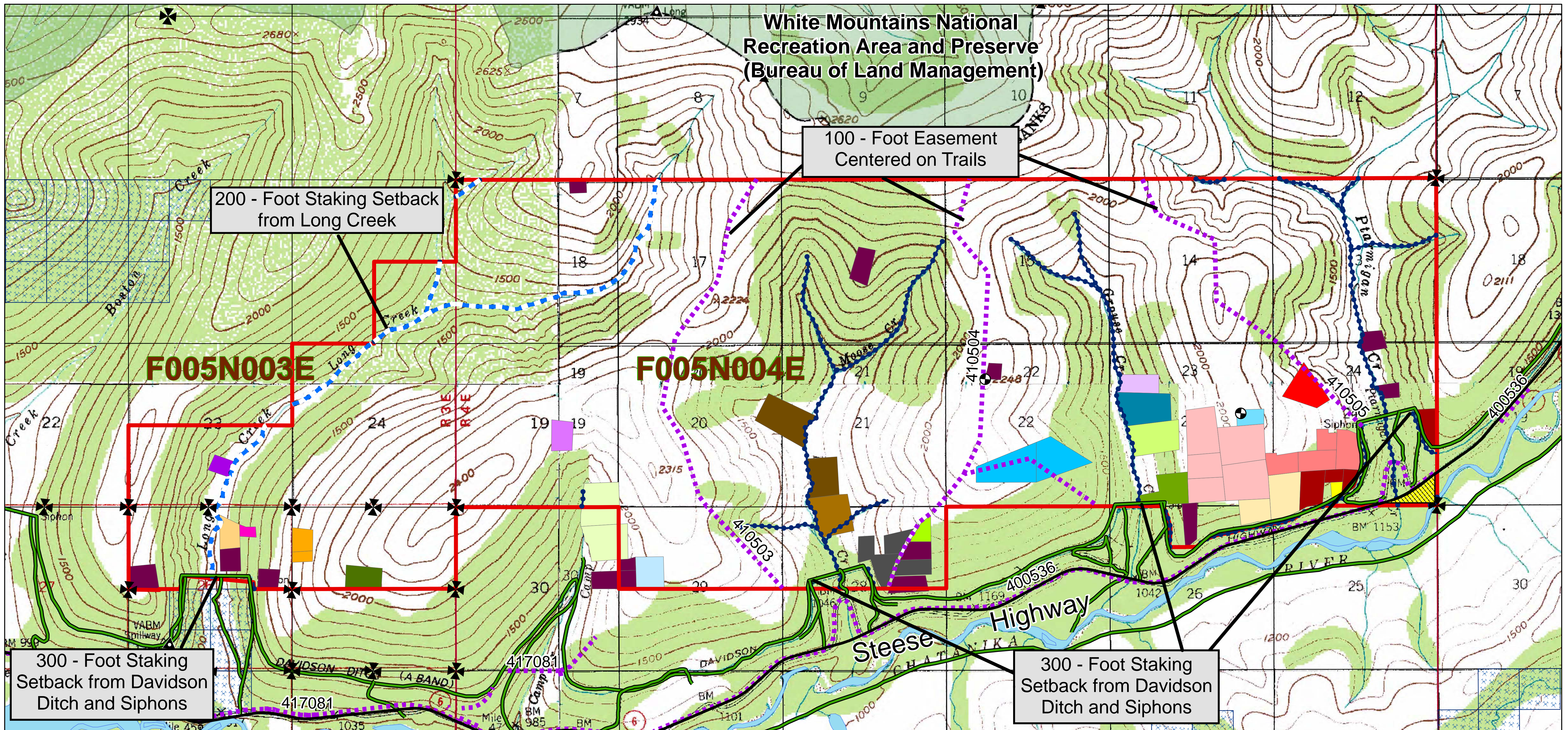


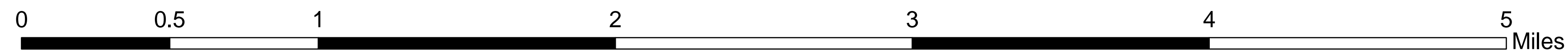


White Mountain II ASLS Map

Remote Recreational Cabin Sites Staking Area # 1110104



HBF 6/7/2010
White_Mtn_ASLS_map

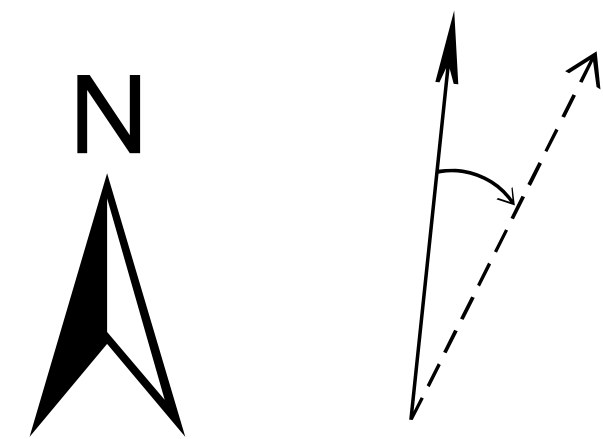


USGS QUADS 1:63,360
Circle A-6, B-6, Livengood A-1, B-1
T5N R3E, T5N R4E Fairbanks Meridian

This staking map is for graphic representation only. It is intended to be used as a guide only and may not show the exact location of existing surveyed parcels or show all easements and reservations. Source documents remain the official record and should be reviewed prior to staking.

Maximum parcel size: 20 acres Minimum parcel size: 5 acres
 Staking authorizations: 50 Staking period: July 16, 2010 to January 31, 2011

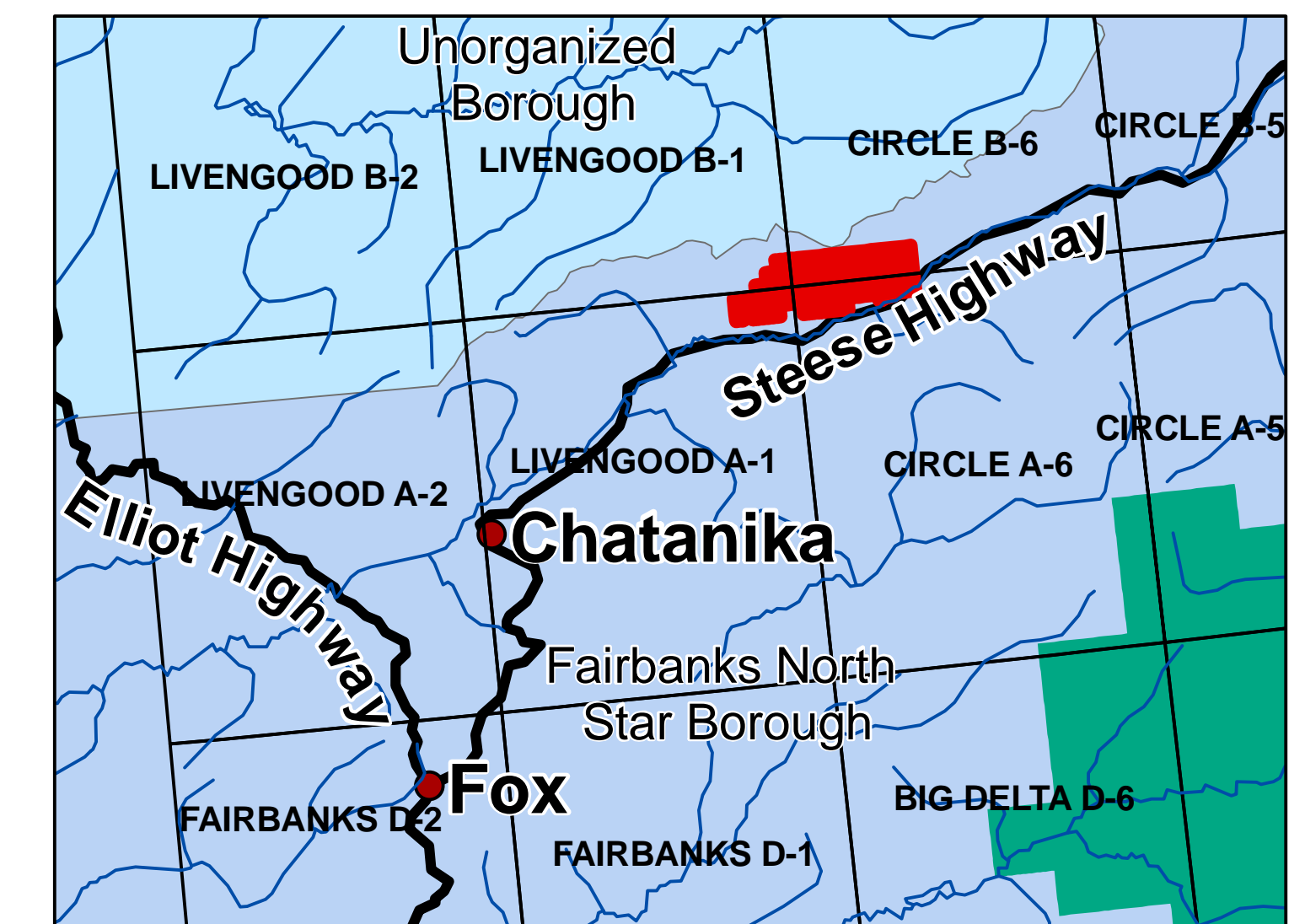
- All parcels staked on land owned by the State of Alaska that contain land within 50 feet of a surveyed or protracted (unsurveyed) section line, are subject to a 50-foot wide easement on each side of the section line, which is reserved to the State of Alaska for public highways under AS 19.10.010. Parcels may not be staked over a surveyed section line.
- Parcels may not be staked across any public or navigable water body. Parcels are subject to a continuous 50-foot public access easement upland from and along the ordinary high water mark.
- Parcels are subject to a 100-foot building setback from the ordinary high water mark of all water bodies determined to be public or navigable. Some water bodies may also have staking setbacks or water frontage limitations.
- A staking setback is required from unauthorized improvements.
- A staking setback is required from airstrips used by the public.
- Most surveys (i.e. ASLS, USS) have survey monuments at each corner, which can be used as reference points and common corners when staking. See the survey plats for information on monument corner numbers, bearings, and distances. Monuments found in the field take precedence over the graphic record.
- There are public access easements along most ASLS boundaries. Check the survey plats for additional information.
- Trail easements have not been verified and their actual location may differ on the ground. Labeling of a trail easement does not guarantee the existence of a trail.
- Unauthorized airstrips are not maintained by the Department of Natural Resources. Use of airstrips on state land that are not authorized is at your own risk.
- See the general staking instructions and area-specific supplemental staking instructions for additional information.



Magnetic Declination
21.8 East

Alaska State Land Surveys

850034	860107	900143	930097	940038
850083	890048	920039	930127	940058
850154	890131	920154	930142	940061
850184	900060	920185	930152	940078
860008	900091	930049	930172	20020011



White Mountain II Survey Information

The links below are for survey plats in the White Mountain II staking area and vicinity.

Township 5 North, Range 3 E, Fairbanks Meridian

USRS F005N003E

<http://landrecords.alaska.gov/gis/raster/blm/usrs/20051201/Fairbanks/AK1300500N00300E001.pdf>

<http://landrecords.alaska.gov/gis/raster/blm/usrs/20051201/Fairbanks/AK1300500N00300E002.pdf>

<http://landrecords.alaska.gov/gis/raster/blm/usrs/20051201/Fairbanks/AK1300500N00300E003.pdf>

USS 4391

http://landrecords.alaska.gov/gis/raster/blm/uss/20030225/USS004391/USS004391_001.pdf

USS 5072

http://landrecords.alaska.gov/gis/raster/blm/uss/20030225/USS005072/USS005072_001.pdf

USS 5469

http://landrecords.alaska.gov/gis/raster/blm/uss/20030225/USS005469/USS005469_001.pdf

ASLS 830128

<http://landrecords.alaska.gov/gis/raster/dnr/surveys/20000731/00026301.pdf>

ASLS 880115

<http://landrecords.alaska.gov/gis/raster/dnr/surveys/20000731/00029349.pdf>

ASLS 890048

<http://landrecords.alaska.gov/gis/raster/dnr/surveys/20000731/00029236.pdf>

ASLS 890131

<http://landrecords.alaska.gov/gis/raster/dnr/surveys/20000731/00029159.pdf>

ASLS 930049

<http://landrecords.alaska.gov/gis/raster/dnr/surveys/20000731/00028282.pdf>

ASLS 940061

<http://landrecords.alaska.gov/gis/raster/dnr/surveys/20000731/00028117.pdf>

ASLS 940078

<http://landrecords.alaska.gov/gis/raster/dnr/surveys/20000731/00028105.pdf>

ASLS 20020011

http://landrecords.alaska.gov/gis/raster/dnr/surveys/20060202/ASLS20020011_1.pdf

Tract A http://landrecords.alaska.gov/gis/raster/dnr/surveys/20060202/ASLS20020011_2.pdf

Tract B http://landrecords.alaska.gov/gis/raster/dnr/surveys/20060202/ASLS20020011_3.pdf

Tract C http://landrecords.alaska.gov/gis/raster/dnr/surveys/20060202/ASLS20020011_4.pdf

Township 5 North, Range 4 E, Fairbanks Meridian

USRS F005N004E

<http://landrecords.alaska.gov/gis/raster/blm/usrs/20021101/Fairbanks/AK1300500N00400E001.pdf>

<http://landrecords.alaska.gov/gis/raster/blm/usrs/20051201/Fairbanks/AK1300500N00400E002.pdf>

USS 4391

http://landrecords.alaska.gov/gis/raster/blm/uss/20030225/USS004391/USS004391_001.pdf

ASCS F005N004E

<http://landrecords.alaska.gov/gis/raster/dnr/surveys/20000731/00019191.pdf>

CS F005N004E

<http://landrecords.alaska.gov/gis/raster/dnr/surveys/20000731/00020028.pdf>

ASLS 830128

<http://landrecords.alaska.gov/gis/raster/dnr/surveys/20000731/00026301.pdf>

ASLS 850034

<http://landrecords.alaska.gov/gis/raster/dnr/surveys/20000731/00026019.pdf>

ASLS 850083

<http://landrecords.alaska.gov/gis/raster/dnr/surveys/20000731/00025976.pdf>

ASLS 850154

<http://landrecords.alaska.gov/gis/raster/dnr/surveys/20000731/00025910.pdf>

ASLS 850184

<http://landrecords.alaska.gov/gis/raster/dnr/surveys/20000731/00025884.pdf>

ASLS 860008

<http://landrecords.alaska.gov/gis/raster/dnr/surveys/20000731/00025754.pdf>

ASLS 860107

<http://landrecords.alaska.gov/gis/raster/dnr/surveys/20000731/00025672.pdf>

ASLS 900060

<http://landrecords.alaska.gov/gis/raster/dnr/surveys/20000731/00029000.pdf>

ASLS 900091

<http://landrecords.alaska.gov/gis/raster/dnr/surveys/20000731/00028971.pdf>

ASLS 900143

<http://landrecords.alaska.gov/gis/raster/dnr/surveys/20000731/00028924.pdf>

ASLS 920039

<http://landrecords.alaska.gov/gis/raster/dnr/surveys/20000731/00028473.pdf>

ASLS 920154

<http://landrecords.alaska.gov/gis/raster/dnr/surveys/20000731/00028372.pdf>

ASLS 920185

<http://landrecords.alaska.gov/gis/raster/dnr/surveys/20000731/00028344.pdf>

ASLS 930097

<http://landrecords.alaska.gov/gis/raster/dnr/surveys/20000731/00028241.pdf>

ASLS 930127

<http://landrecords.alaska.gov/gis/raster/dnr/surveys/20000731/00028214.pdf>

ASLS 930142

<http://landrecords.alaska.gov/gis/raster/dnr/surveys/20000731/00028197.pdf>

ASLS 930152

<http://landrecords.alaska.gov/gis/raster/dnr/surveys/20000731/00028189.pdf>

ASLS 930172

<http://landrecords.alaska.gov/gis/raster/dnr/surveys/20000731/00028174.pdf>

ASLS 940038

<http://landrecords.alaska.gov/gis/raster/dnr/surveys/20000731/00028136.pdf>

ASLS 940058

<http://landrecords.alaska.gov/gis/raster/dnr/surveys/20000731/00028120.pdf>

ASLS 940061

<http://landrecords.alaska.gov/gis/raster/dnr/surveys/20000731/00028117.pdf>

ASLS 940078

<http://landrecords.alaska.gov/gis/raster/dnr/surveys/20000731/00028105.pdf>

ASLS 20020011

http://landrecords.alaska.gov/gis/raster/dnr/surveys/20060202/ASLS20020011_1.pdf

Tract D http://landrecords.alaska.gov/gis/raster/dnr/surveys/20060202/ASLS20020011_5.pdf

Tract E http://landrecords.alaska.gov/gis/raster/dnr/surveys/20060202/ASLS20020011_6.pdf

Tract F http://landrecords.alaska.gov/gis/raster/dnr/surveys/20060202/ASLS20020011_7.pdf

Tract G http://landrecords.alaska.gov/gis/raster/dnr/surveys/20060202/ASLS20020011_8.pdf

Tract H http://landrecords.alaska.gov/gis/raster/dnr/surveys/20060202/ASLS20020011_9.pdf

Tract I http://landrecords.alaska.gov/gis/raster/dnr/surveys/20060202/ASLS20020011_10.pdf

Tract J http://landrecords.alaska.gov/gis/raster/dnr/surveys/20060202/ASLS20020011_11.pdf

Tract K http://landrecords.alaska.gov/gis/raster/dnr/surveys/20060202/ASLS20020011_12.pdf

Tract L http://landrecords.alaska.gov/gis/raster/dnr/surveys/20060202/ASLS20020011_13.pdf

Tract M http://landrecords.alaska.gov/gis/raster/dnr/surveys/20060202/ASLS20020011_14.pdf

Tract N http://landrecords.alaska.gov/gis/raster/dnr/surveys/20060202/ASLS20020011_15.pdf