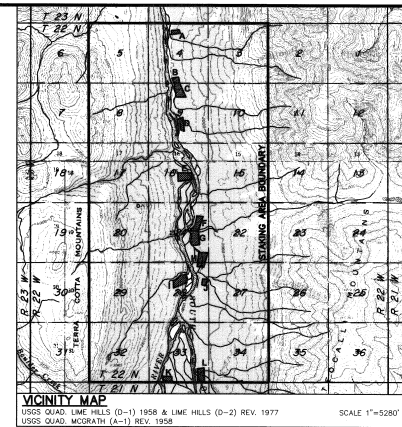
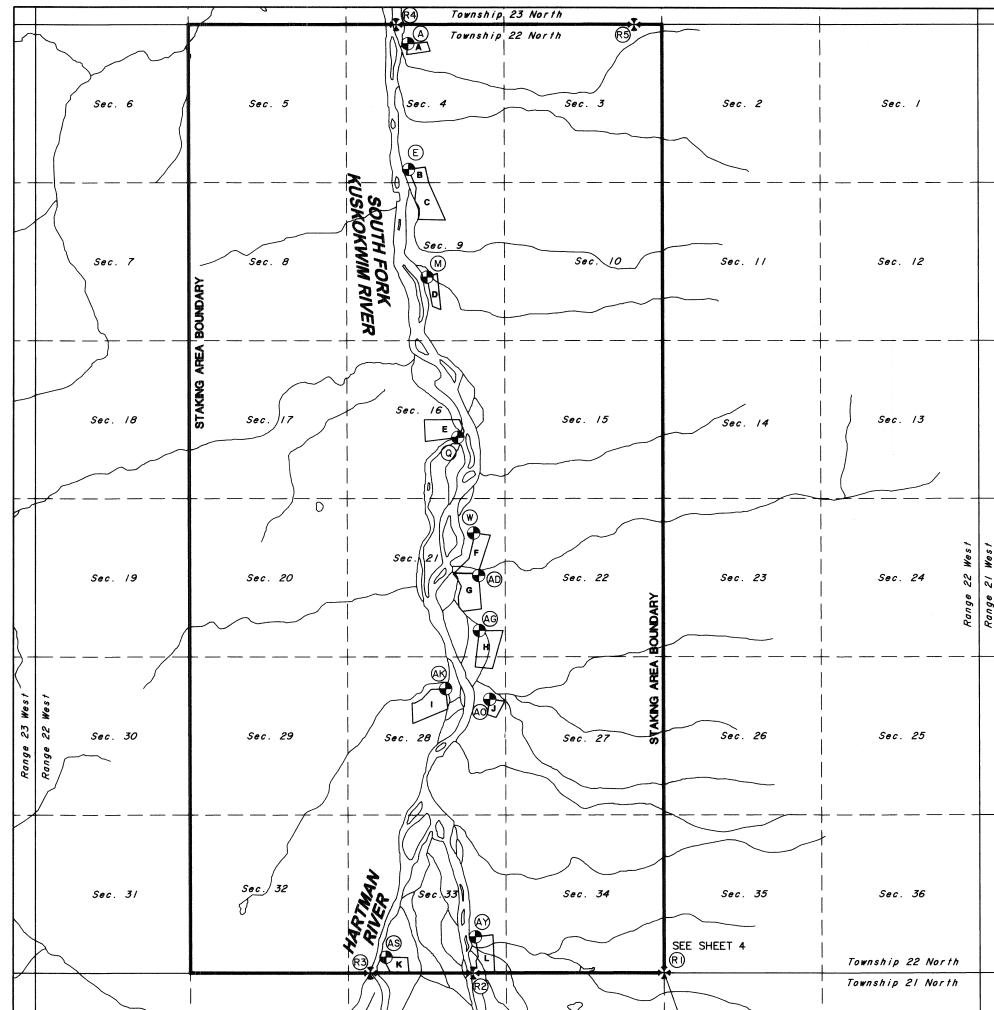


## MOUNT RICH ADDITION REMOTE RECREATIONAL CABIN SITES

## INDEX SHEET

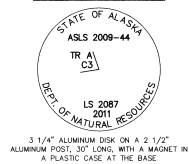
## GEODETIC TIES TO THE BASIS OF COORDINATES (R1)

TRACT	COR	MON	BEARING	DISTANCE
A	C1	A	N. 15° 22' 27" W.	32,193.58'
B	C1	E	N. 17° 35' 59" W.	28,163.67'
D	C1	N	N. 18° 48' 48" W.	24,547.32'
E	C1	Q	N. 21° 01' 57" W.	19,186.27'
F	C1	W	N. 23° 22' 39" W.	18,006.72'
G	C1	AD	N. 24° 58' 17" W.	14,642.50'
H	C1	AG	N. 28° 19' 56" W.	12,993.25'
I	C1	AK	N. 37° 32' 13" W.	11,973.15'
J	C1	AO	N. 32° 29' 08" W.	10,635.90'
K	C1	AS	N. 36° 45' 42" W.	9,317.91'
L	C1	AT	N. 79° 09' 31" W.	6,424.57'

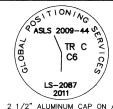


## TYPICAL MONUMENTS SET THIS SURVEY

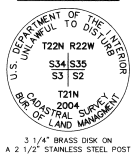
## PRIMARY MONUMENT



## SECONDARY MONUMENT



## TYPICAL RECOVERED BLM MONUMENT



## TYPICAL WITNESS POST

AN ORANGE FIBERGLASS REINFORCED CARBONITE POST, 6 FT. LONG, SET AT A CARDINAL DIRECTION WITHIN 1 FT. OF ALL PRIMARY MONUMENTS

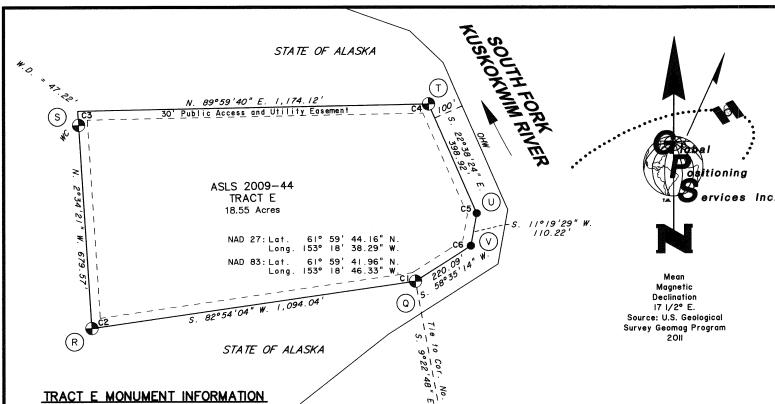
## TYPICAL BEARING TREE TAG

A YELLOW 4 1/2" x 6" ALUMINUM TAG SET AT BREAKST HEIGHT TREES ARE NOT SORBED

WITNESS POST  
PLEASE DO  
NOT REMOVE  
NAME  
S  
M  
A  
R  
K  
E  
R

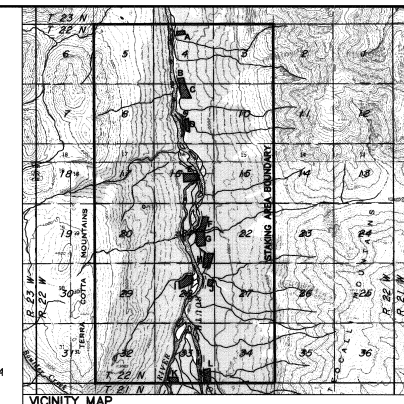
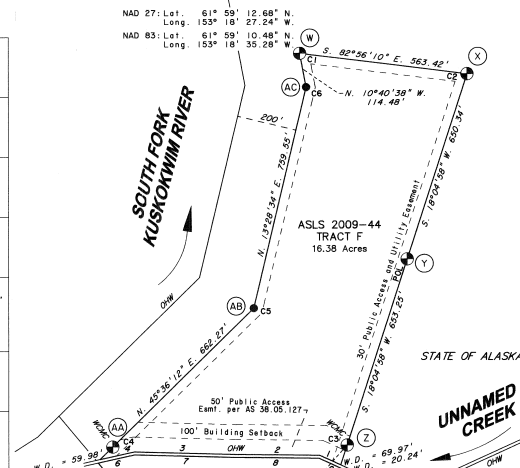
STATE OF ALASKA  
DEPT. OF NATURAL RESOURCES  
DIV. OF MINING LAND AND WATER  
**BEARING TREE**  
CORNER IS APPROXIMATELY  
N35E 15.35'  
DIRECTION DISTANCE  
1. 1. 2. 3. 4. 5. 6. 7. 8. 9. 10. 11. 12. 13. 14. 15. 16. 17. 18. 19. 20. 21. 22. 23. 24. 25. 26. 27. 28. 29. 30. 31. 32. 33. 34. 35. 36. 37. 38. 39. 40. 41. 42. 43. 44. 45. 46. 47. 48. 49. 50. 51. 52. 53. 54. 55. 56. 57. 58. 59. 60. 61. 62. 63. 64. 65. 66. 67. 68. 69. 70. 71. 72. 73. 74. 75. 76. 77. 78. 79. 80. 81. 82. 83. 84. 85. 86. 87. 88. 89. 90. 91. 92. 93. 94. 95. 96. 97. 98. 99. 100. 101. 102. 103. 104. 105. 106. 107. 108. 109. 110. 111. 112. 113. 114. 115. 116. 117. 118. 119. 120. 121. 122. 123. 124. 125. 126. 127. 128. 129. 130. 131. 132. 133. 134. 135. 136. 137. 138. 139. 140. 141. 142. 143. 144. 145. 146. 147. 148. 149. 150. 151. 152. 153. 154. 155. 156. 157. 158. 159. 160. 161. 162. 163. 164. 165. 166. 167. 168. 169. 170. 171. 172. 173. 174. 175. 176. 177. 178. 179. 180. 181. 182. 183. 184. 185. 186. 187. 188. 189. 190. 191. 192. 193. 194. 195. 196. 197. 198. 199. 200. 201. 202. 203. 204. 205. 206. 207. 208. 209. 210. 211. 212. 213. 214. 215. 216. 217. 218. 219. 220. 221. 222. 223. 224. 225. 226. 227. 228. 229. 230. 231. 232. 233. 234. 235. 236. 237. 238. 239. 240. 241. 242. 243. 244. 245. 246. 247. 248. 249. 250. 251. 252. 253. 254. 255. 256. 257. 258. 259. 260. 261. 262. 263. 264. 265. 266. 267. 268. 269. 270. 271. 272. 273. 274. 275. 276. 277. 278. 279. 280. 281. 282. 283. 284. 285. 286. 287. 288. 289. 290. 291. 292. 293. 294. 295. 296. 297. 298. 299. 300. 301. 302. 303. 304. 305. 306. 307. 308. 309. 310. 311. 312. 313. 314. 315. 316. 317. 318. 319. 320. 321. 322. 323. 324. 325. 326. 327. 328. 329. 330. 331. 332. 333. 334. 335. 336. 337. 338. 339. 340. 341. 342. 343. 344. 345. 346. 347. 348. 349. 350. 351. 352. 353. 354. 355. 356. 357. 358. 359. 360. 361. 362. 363. 364. 365. 366. 367. 368. 369. 370. 371. 372. 373. 374. 375. 376. 377. 378. 379. 380. 381. 382. 383. 384. 385. 386. 387. 388. 389. 390. 391. 392. 393. 394. 395. 396. 397. 398. 399. 400. 401. 402. 403. 404. 405. 406. 407. 408. 409. 410. 411. 412. 413. 414. 415. 416. 417. 418. 419. 420. 421. 422. 423. 424. 425. 426. 427. 428. 429. 430. 431. 432. 433. 434. 435. 436. 437. 438. 439. 440. 441. 442. 443. 444. 445. 446. 447. 448. 449. 450. 451. 452. 453. 454. 455. 456. 457. 458. 459. 460. 461. 462. 463. 464. 465. 466. 467. 468. 469. 470. 471. 472. 473. 474. 475. 476. 477. 478. 479. 480. 481. 482. 483. 484. 485. 486. 487. 488. 489. 490. 491. 492. 493. 494. 495. 496. 497. 498. 499. 500. 501. 502. 503. 504. 505. 506. 507. 508. 509. 510. 511. 512. 513. 514. 515. 516. 517. 518. 519. 520. 521. 522. 523. 524. 525. 526. 527. 528. 529. 530. 531. 532. 533. 534. 535. 536. 537. 538. 539. 540. 541. 542. 543. 544. 545. 546. 547. 548. 549. 550. 551. 552. 553. 554. 555. 556. 557. 558. 559. 560. 561. 562. 563. 564. 565. 566. 567. 568. 569. 570. 571. 572. 573. 574. 575. 576. 577. 578. 579. 580. 581. 582. 583. 584. 585. 586. 587. 588. 589. 590. 591. 592. 593. 594. 595. 596. 597. 598. 599. 600. 601. 602. 603. 604. 605. 606. 607. 608. 609. 610. 611. 612. 613. 614. 615. 616. 617. 618. 619. 620. 621. 622. 623. 624. 625. 626. 627. 628. 629. 630. 631. 632. 633. 634. 635. 636. 637. 638. 639. 640. 641. 642. 643. 644. 645. 646. 647. 648. 649. 650. 651. 652. 653. 654. 655. 656. 657. 658. 659. 660. 661. 662. 663. 664. 665. 666. 667. 668. 669. 670. 671. 672. 673. 674. 675. 676. 677. 678. 679. 680. 681. 682. 683. 684. 685. 686. 687. 688. 689. 690. 691. 692. 693. 694. 695. 696. 697. 698. 699. 700. 701. 702. 703. 704. 705. 706. 707. 708. 709. 710. 711. 712. 713. 714. 715. 716. 717. 718. 719. 720. 721. 722. 723. 724. 725. 726. 727. 728. 729. 730. 731. 732. 733. 734. 735. 736. 737. 738. 739. 740. 741. 742. 743. 744. 745. 746. 747. 748. 749. 750. 751. 752. 753. 754. 755. 756. 757. 758. 759. 760. 761. 762. 763. 764. 765. 766. 767. 768. 769. 770. 771. 772. 773. 774. 775. 776. 777. 778. 779. 780. 781. 782. 783. 784. 785. 786. 787. 788. 789. 790. 791. 792. 793. 794. 795. 796. 797. 798. 799. 800. 801. 802. 803. 804. 805. 806. 807. 808. 809. 810. 811. 812. 813. 814. 815. 816. 817. 818. 819. 820. 821. 822. 823. 824. 825. 826. 827. 828. 829. 830. 831. 832. 833. 834. 835. 836. 837. 838. 839. 840. 841. 842. 843. 844. 845. 846. 847. 848. 849. 850. 851. 852. 853. 854. 855. 856. 857. 858. 859. 860. 861. 862. 863. 864. 865. 866. 867. 868. 869. 870. 871. 872. 873. 874. 875. 876. 877. 878. 879. 880. 881. 882. 883. 884. 885. 886. 887. 888. 889. 890. 891. 892. 893. 894. 895. 896. 897. 898. 899. 900. 901. 902. 903. 904. 905. 906. 907. 908. 909. 910. 911. 912. 913. 914. 915. 916. 917. 918. 919. 920. 921. 922. 923. 924. 925. 926. 927. 928. 929. 930. 931. 932. 933. 934. 935. 936. 937. 938. 939. 940. 941. 942. 943. 944. 945. 946. 947. 948. 949. 950. 951. 952. 953. 954. 955. 956. 957. 958. 959. 960. 961. 962. 963. 964. 965. 966. 967. 968. 969. 970. 971. 972. 973. 974. 975. 976. 977. 978. 979. 980. 981. 982. 983. 984. 985. 986. 987. 988. 989. 990. 991. 992. 993. 994. 995. 996. 997. 998. 999. 1000. 1001. 1002. 1003. 1004. 1005. 1006. 1007. 1008. 1009. 1010. 1011. 1012. 1013. 1014. 1015. 1016. 1017. 1018. 1019. 1020. 1021. 1022. 1023. 1024. 1025. 1026. 1027. 1028. 1029. 1030. 1031. 1032. 1033. 1034. 1035. 1036. 1037. 1038. 1039. 1040. 1041. 1042. 1043. 1044. 1045. 1046. 1047. 1048. 1049. 1050. 1051. 1052. 1053. 1054. 1055. 1056. 1057. 1058. 1059. 1060. 1061. 1062. 1063. 1064. 1065. 1066. 1067. 1068. 1069. 1070. 1071. 1072. 1073. 1074. 1075. 1076. 1077. 1078. 1079. 1080. 1081. 1082. 1083. 1084. 1085. 1086. 1087. 1088. 1089. 1090. 1091. 1092. 1093. 1094. 1095. 1096. 1097. 1098. 1099. 1100. 1101. 1102. 1103. 1104. 1105. 1106. 1107. 1108. 1109. 1110. 1111. 1112. 1113. 1114. 1115. 1116. 1117. 1118. 1119. 1120. 1121. 1122. 1123. 1124. 1125. 1126. 1127. 1128. 1129. 1130. 1131. 1132. 1133. 1134. 1135. 1136. 1137. 1138. 1139. 1140. 1141. 1142. 1143. 1144. 1145. 1146. 1147. 1148. 1149. 1150. 1151. 1152. 1153. 1154. 1155. 1156. 1157. 1158. 1159. 1160. 1161. 1162. 1163. 1164. 1165. 1166. 1167. 1168. 1169. 1170. 1171. 1172. 1173. 1174. 1175. 1176. 1177. 1178. 1179. 1180. 1181. 1182. 1183. 1184. 1185. 1186. 1187. 1188. 1189. 1190. 1191. 1192. 1193. 1194. 1195. 1196. 1197. 1198. 1199. 1200. 1201. 1202. 1203. 1204. 1205. 1206. 1207. 1208. 1209. 1210. 1211. 1212. 1213. 1214. 1215. 1216. 1217. 1218. 1219. 1220. 1221. 1222. 1223. 1224. 1225. 1226. 1227. 1228. 1229. 1230. 1231. 1232. 1233. 1234. 1235. 1236. 1237. 1238. 1239. 1240. 1241. 1242. 1243. 1244. 1245. 1246. 1247. 1248. 1249. 1250. 1251. 1252. 1253. 1254. 1255. 1256. 1257. 1258. 1259. 1260. 1261. 1262. 1263. 1264. 1265. 1266. 1267. 1268. 1269. 1270. 1271. 1272. 1273. 1274. 1275. 1276. 1277. 1278. 1279. 1280. 1281. 1282. 1283. 1284. 1285. 1286. 1287. 1288. 1289. 1290. 1291. 1292. 1293. 1294. 1295. 1296. 1297. 1298. 1299. 1300. 1301. 1302. 1303. 1304. 1305. 1306. 1307. 1308. 1309. 1310. 1311. 1312. 1313. 1314. 1315. 1316. 1317. 1318. 1319. 1320. 1321. 1322. 1323. 1324. 1325. 1326. 1327. 1328. 1329. 1330. 1331. 1332. 1333. 1334. 1335. 1336. 1337. 1338. 1339. 1340. 1341. 1342. 1343. 1344. 1345. 1346. 1347. 1348. 1349. 1350. 1351. 1352. 1353. 1354. 1355. 1356. 1357. 1358. 1359. 1360. 1361. 1362. 1363. 1364. 1365. 1366. 1367. 1368. 1369. 1370. 1371. 1372. 1373. 1374. 1375. 1376. 1377. 1378. 1379. 1380. 1381. 1382. 1383. 1384. 1385. 1386. 1387. 1388. 1389. 1390. 1391. 1392. 1393. 1394. 1395. 1396. 1397. 1398. 1399. 1400. 1401. 1402. 1403. 1404. 1405. 1406. 1407. 1408. 1409. 1410. 1411. 1412. 1413. 1414. 1415. 1416. 1417. 1418. 1419. 1420. 1421. 1422. 1423. 1424. 1425. 1426. 1427. 1428. 1429. 1430. 1431. 1432. 1433. 1434. 1435. 1436. 1437. 1438. 1439. 1440. 1441. 1442. 1443. 1444. 1445. 1446. 1447. 1448. 1449. 1450. 1451. 1452. 1453. 1454. 1455. 1456. 1457. 1458. 1459. 1460. 1461. 1462. 1463. 1464. 1465. 1466. 1467. 1468. 1469. 1470. 1471. 1472. 1473. 1474. 1475. 1476. 1477. 1478. 1479. 1480. 1481. 1482. 1483. 1484. 1485. 1486. 1487. 1488. 1489. 1490. 1491. 1492. 1493. 1494. 1495. 1496. 1497. 1498. 1499. 1500. 1501. 1502. 1503. 1504. 1505. 1506. 1507. 1508. 1509. 1510. 1511. 1512. 1513. 1514. 1515. 1516. 1517. 1518. 1519. 1520. 1521. 1522. 1523. 1524. 1525. 1526. 1527. 1528. 1529. 1530. 1531. 1532. 1533. 1534. 1535. 1536. 1537. 1538. 1539. 1540. 1541. 1542. 1543. 1544. 1545. 1546. 1547. 1548. 1549. 1550. 1551. 1552. 1553. 1554. 1555. 1556. 1557. 1558. 1559. 1560. 1561. 1562. 1563. 1564. 1565. 1566. 1567. 1568. 1569. 1570. 1571. 1572. 1573. 1574. 1575. 1576. 1577. 1578. 1579. 1580. 1581. 1582. 1583. 1584. 1585. 1586. 1587. 1588. 1589. 1590. 1591. 1592. 1593. 1594. 1595. 1596. 1597. 1598. 1599. 1600. 1601. 1602. 1603. 1604. 1605. 1606. 1607. 1608. 1609. 1610. 1611. 1612. 1613. 1614. 1615. 1616. 1617. 1618. 1619. 1620. 1621. 1622. 1623. 1624. 1625. 1626. 1627. 1628. 1629. 1630. 1631. 1632. 1633. 1634. 1635. 1636. 1637. 1638. 1639. 1640. 1641. 1642. 1643. 1644. 1645. 1646. 1647. 1648. 1649. 1650. 1651. 1652. 1653. 1654. 1655. 1656. 1657. 1658. 1659. 1660. 1661. 1662. 1663. 1664. 1665. 1666. 1667. 1668. 1669. 1670. 1671. 1672. 1673. 1674. 1675. 1676. 1677. 1678. 1679. 1680. 1681. 1682. 1683. 1684. 1685. 1686. 1687. 1688. 1689. 1690. 1691. 1692. 1693. 1694. 1695. 1696. 1697. 1698. 1699. 1700. 1701. 1702. 1703. 1704. 1705. 1706. 1707. 1708. 1709. 1710. 1711. 1712. 1713. 1714. 1715. 1716. 1717. 1718. 1719. 1720. 1721. 1722. 1723. 1724. 1725. 1726. 1727. 1728. 1729. 1730. 1731. 1732. 1733. 1734. 1735. 1736. 1737. 1738. 1739. 1740. 1741. 1742. 1743. 1744. 1745. 1746. 1747. 1748. 1749. 1750. 1751. 1752. 1753. 1754. 1755. 1756. 1757. 1758. 1759. 1760. 1761. 1762. 1763. 1764. 1765. 1766. 1767. 1768. 1769. 1770. 1771. 1772. 1773. 1774. 1775. 1776. 1777. 1778. 1779. 1780. 1781. 1782. 1783. 1784. 1785. 1786. 1787. 1788. 1789. 1790. 1791. 1792. 1793. 1794. 1795. 1796. 1797. 1798. 1799. 1800. 1801. 1802. 1803. 1804. 1805. 1806. 1807. 1808. 1809. 1810. 1811. 1812. 1813. 1814. 1815. 1816. 1817. 1818. 1819. 1820. 1821. 1822. 1823. 1824. 1825. 1826. 1827. 1828. 1829. 1830. 1831. 1832. 1833. 1834. 1835. 1836. 1837. 1838. 1839. 1840. 1841. 1842. 1843. 1844. 1845. 1846. 1847. 1848. 1849. 1850. 1851. 1852. 1853. 1854. 1855. 1856. 1857. 1858. 1859. 1860. 1861. 1862. 1863. 1864. 1865. 1866. 1867. 1868. 1869. 1870. 1871. 1872. 1873. 1874. 1875. 1876. 1877. 1878. 1879. 1880. 1881. 1882. 1883. 1884. 1885. 1886. 1887. 1888. 1889. 1890. 1891. 1892. 1893. 1894. 1895. 1896. 1897. 1898. 1899. 1900. 1901. 1902. 1903. 1904. 1905. 1906. 1907. 1908. 1909. 1910. 1911. 1912. 1913. 1914. 1915. 1916. 1917. 1918. 1919. 1920. 1921. 1922. 1923. 1924. 1925. 1926. 1927. 1928. 1929. 1930. 1931. 1932. 1933. 1934. 1935. 1936. 1937. 1938. 1939. 1940. 1941. 1





# **TRACT F - MONUMENT INFORMATION**

|    |                   |
|----|-------------------|
| W  | Tract F, Corner 1 |
| X  | Tract F, Corner 2 |
| Y  | Tract F, Corner 3 |
| Z  | Tract F, Corner 4 |
| AA | Tract F, Corner 5 |
| AB | Tract F, Corner 6 |
| AC | Tract F, Corner 7 |



## **TRACT E MONUMENT INFORMATION**

|    |                   |
|----|-------------------|
| W  | Tract E, Corner 1 |
| X  | Tract E, Corner 2 |
| Y  | Tract E, Corner 3 |
| Z  | Tract E, Corner 4 |
| AA | Tract E, Corner 5 |
| AB | Tract E, Corner 6 |
| AC | Tract E, Corner 7 |

## **LESSEE CERTIFICATE**

I, THE UNDERSIGNED, HEREBY CERTIFY THAT I AM THE LESSEE AS SHOWN HEREON. I HEREBY APPROVE THIS SURVEY AND PLAT.

TRACT E, AND ADL No. 230900  
JOHN H. SMART  
19811 QUIET WAY  
CHUGAK, AK 99567

SUBSCRIBED AND SWORN TO BEFORE ME THIS 14th DAY OF November, 2012.

FOR: John H. Smart  
LESSEE

NOTARY PUBLIC FOR ALASKA  
MY COMMISSION EXPIRES 11/10/13



## **LESSEE CERTIFICATE**

I, THE UNDERSIGNED, HEREBY CERTIFY THAT I AM THE LESSEE AS SHOWN HEREON. I HEREBY APPROVE THIS SURVEY AND PLAT.

TRACT H, AND ADL No. 230851  
KARL D. ZEISEL  
5555 MCCRACKEN ROAD  
HERNANDO, MS 38632

SUBSCRIBED AND SWORN TO BEFORE ME THIS 28th DAY OF August, 2012.

FOR: Karl D. Zeisel  
LESSEE

NOTARY PUBLIC FOR ALASKA  
MY COMMISSION EXPIRES 11/10/13

## **TRACT H MONUMENT INFORMATION**

|    |                   |
|----|-------------------|
| W  | Tract H, Corner 1 |
| X  | Tract H, Corner 2 |
| Y  | Tract H, Corner 3 |
| Z  | Tract H, Corner 4 |
| AA | Tract H, Corner 5 |
| AB | Tract H, Corner 6 |
| AC | Tract H, Corner 7 |

## **TRACT G MEANDER COURSES**

|   |                           |
|---|---------------------------|
| 1 | N. 40° 02' 22" E. 183.92' |
| 2 | N. 3° 02' 56" E. 338.81'  |
| 3 | N. 15° 37' 03" E. 387.19' |
| 4 | N. 28° 16' 35" W. 303.03' |
| 5 | N. 30° 46' 23" W. 187.69' |
| 6 | N. 77° 28' 52" E. 124.70' |
| 7 | S. 88° 30' 49" E. 340.26' |
| 8 | S. 89° 30' 08" E. 275.76' |
| 9 | S. 65° 11' 56" E. 113.48' |

## **LESSEE CERTIFICATE**

I, THE UNDERSIGNED, HEREBY CERTIFY THAT I AM THE LESSEE AS SHOWN HEREON. I HEREBY APPROVE THIS SURVEY AND PLAT.

TRACT F, AND ADL No. 230769  
BARNEY A. ANSELMENT  
P.O. BOX 87  
MOGRATH, AK 99627

SUBSCRIBED AND SWORN TO BEFORE ME THIS 28th DAY OF August, 2012.

FOR: Barney A. Anselment  
LESSEE

NOTARY PUBLIC FOR ALASKA  
MY COMMISSION EXPIRES 11/10/13

NOTARY'S ACKNOWLEDGEMENT  
SUBSCRIBED AND SWORN TO BEFORE ME THIS 28th DAY OF August, 2012.

FOR: Barney A. Anselment  
LESSEE

NOTARY PUBLIC FOR ALASKA  
MY COMMISSION EXPIRES 11/10/13

LESSEE CERTIFICATE  
I, THE UNDERSIGNED, HEREBY CERTIFY THAT I AM THE LESSEE AS SHOWN HEREON. I HEREBY APPROVE THIS SURVEY AND PLAT.

TRACT G, AND ADL No. 230823  
DANNY E. BREWER JR.  
P.O. BOX 2102  
KENAI, AK 99611

SUBSCRIBED AND SWORN TO BEFORE ME THIS 25th DAY OF August, 2012.

FOR: Danny E. Brewer Jr.  
LESSEE

NOTARY PUBLIC FOR ALASKA  
MY COMMISSION EXPIRES 11/10/13

## **LEGEND:**

|     |                                    |
|-----|------------------------------------|
| +   | BLM MONUMENT RECOVERED             |
| ●   | PRIMARY MONUMENT SET THIS SURVEY   |
| ○   | SECONDARY MONUMENT SET THIS SURVEY |
| —   | PROTRACTED SECTION LINES           |
| —   | SURVEYED LINES                     |
| —   | TIE                                |
| —   | MONUMENT IDENTIFIER                |
| ( ) | RECORD INFORMATION                 |
| OHW | ORDINARY HIGH WATER                |
| POL | POINT ON LINE                      |

## **TRACT G MONUMENT INFORMATION**

|    |                   |
|----|-------------------|
| W  | Tract G, Corner 1 |
| X  | Tract G, Corner 2 |
| Y  | Tract G, Corner 3 |
| Z  | Tract G, Corner 4 |
| AA | Tract G, Corner 5 |
| AB | Tract G, Corner 6 |
| AC | Tract G, Corner 7 |

## **SCALE**

1 inch = 200 feet

1 meter = 3.280833 U.S. SURVEY FEET, 1 U.S. ACRE = 0.4047 HECTARE

DATE OF SURVEY

Beginning May 17, 2011

Ending July 5, 2011

Stanley E. Seors

Global Positioning Services, Inc.

2803 Blueberry Rd.

Anchorage, Alaska 99503

STATE OF ALASKA

DEPARTMENT OF NATURAL RESOURCES

DIVISION OF MINING, LAND & WATER

ANCHORAGE, ALASKA

ALASKA STATE LAND SURVEY NO. 2009-44

MOUNT RICH ADDITION REMOTE RECREATIONAL CABIN SITES

CREATING TRACTS A THROUGH L

WITHIN UNSURVEYED SECTIONS 4, 8, 16, 21, 28 & 33,

T-22 N., R-22 W.

SEWARD MERIDIAN, ALASKA

U.S. MINING RECORDING DISTRICT

DRAWN BY: LSV

APPROVAL RECOMMENDED

DATE: 11/20/2011

STATEWIDE MAPPING SUPERVISOR

CHECKED: 11/21/2011

DNR FILE NO.

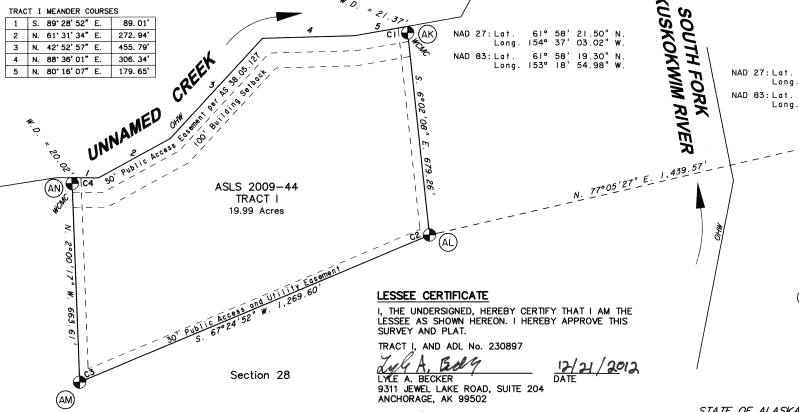
1"= 200'

ASLS 20090044

SHEET 3 OF 4

Pages 3 of 4

|                           |
|---------------------------|
| TRACT I MEANDER COURSES   |
| 1 S. 89°28'52" E. 89.01'  |
| 2 N. 61°31'24" E. 272.94' |
| 3 N. 42°32'57" E. 455.79' |
| 4 N. 88°36'01" E. 306.34' |
| 5 N. 80°16'07" E. 179.65' |



#### LESSEE CERTIFICATE

I, THE UNDERSIGNED, HEREBY CERTIFY THAT I AM THE LESSEE AS SHOWN HEREON. I HEREBY APPROVE THIS SURVEY AND PLAT.

TRACT I, AND ADL No. 230897

LYLE A. BECKER  
9311 JEWEL LAKE ROAD, SUITE 204  
ANCHORAGE, AK 99502

NOTARY'S ACKNOWLEDGEMENT

SUBSCRIBED AND SWORN TO BEFORE ME THIS 21<sup>st</sup> DAY OF December, 2012.

FOR: Lyle A. Becker

LESSEE

NOTARY PUBLIC FOR ALASKA  
MY COMMISSION EXPIRES 12/31/2012



#### TRACT I MONUMENT INFORMATION

|    |         |   |
|----|---------|---|
| WC | TRACT I | Tract I, Witness Corner Meander Corner 1<br>22 ins. in the Ground, With a Mound of Stone,<br>2 ft. Wide, 1 ft. High, Witness Post North<br>BT 1 10° Spruce S. 83° E., 24.28 ft.<br>BT 2 10° Spruce S. 29° E., 15.18 ft.<br>BT 3 12° Spruce S. 45° W., 34.47 ft. |
| AL | TRACT I | Tract I, Corner 2<br>24 ins. in the Ground, Witness Post North<br>BT 1 9° Spruce S. 90° E., 11.03 ft.<br>BT 2 5° Spruce S. 10° W., 15.44 ft.<br>BT 3 5° Spruce N. 15° W., 3.36 ft.  |
| AM | TRACT I | Tract I, Corner 3<br>24 ins. in the Ground, Witness Post North<br>BT 1 4° Spruce S. 37° W., 20.63 ft.<br>BT 2 7° Spruce N. 59° W., 15.64 ft.<br>BT 3 7° Spruce N. 8° W., 32.16 ft.  |
| AN | TRACT I | Tract I, Witness Corner Meander Corner 4<br>24 ins. in the Ground, Witness Post South<br>BT 1 3° Spruce N. 39° E., 8.55 ft.<br>BT 2 12° Spruce S. 29° W., 22.00 ft.<br>BT 3 4° Spruce S. 88° W., 10.40 ft.  |

#### TRACT K MONUMENT INFORMATION

|    |         |   |
|----|---------|---|
| WC | TRACT K | Tract K, Corner 1<br>20 ins. in the Ground, Witness Post North<br>BT 1 4° Spruce S. 89° E., 5.89 ft.<br>BT 2 6° Spruce S. 4° W., 10.09 ft.<br>BT 3 3° Spruce S. 64° W., 11.89 ft.<br>NOTE: Cap is incorrectly marked. Monument is not a witness corner and Corner 1 is not a meander corner.    |
| AT | TRACT K | Tract K, Corner 2<br>22 ins. in the Ground, Witness Post North<br>BT 1 10° Spruce N. 51° E., 17.85 ft.<br>BT 2 14° Spruce S. 54° E., 26.27 ft.<br>BT 3 14° Spruce N. 42° W., 13.40 ft.  |
| AL | TRACT K | Tract K, Corner 3<br>22 ins. in the Ground, Witness Post North<br>BT 1 6° Spruce S. 34° E., 11.99 ft.<br>BT 2 12° Spruce S. 80° W., 10.09 ft.<br>BT 3 4° Spruce N. 15° W., 21.96 ft.  |
| AV | TRACT K | Tract K, Corner 4<br>24 ins. in the Ground, Witness Post North<br>BT 1 12° Spruce N. 2° E., 16.70 ft.<br>BT 2 8° Spruce N. 52° E., 21.51 ft.<br>BT 3 10° Spruce S. 72° E., 18.01 ft.<br>NOTE: Cap is incorrectly marked. Monument is not a witness corner and Corner 4 is not a meander corner. |
| AW | TRACT K | Tract K, Corner 5<br>30 in. Rebar, 27 ins. in the Ground<br>No Accessories were established.  |
| AX | TRACT K | Tract K, Corner 6<br>30 in. Rebar, 27 ins. in the Ground<br>No Accessories were established.  |

#### LESSEE CERTIFICATE

I, THE UNDERSIGNED, HEREBY CERTIFY THAT I AM THE LESSEE AS SHOWN HEREON. I HEREBY APPROVE THIS SURVEY AND PLAT.

TRACT K, AND ADL No. 230907

DENNIS K. WEBER  
1830 E. PARKS HWY #546  
WASILLA, AK 99654

NOTARY'S ACKNOWLEDGEMENT

SUBSCRIBED AND SWORN TO BEFORE ME THIS 25<sup>th</sup> DAY OF October, 2012.

FOR: Dennis Weber

LESSEE

NOTARY PUBLIC FOR ALASKA  
MY COMMISSION EXPIRES 12/31/2012



#### TRACT J MONUMENT INFORMATION

|    |         |  |
|----|---------|--|
| AC | TRACT J | Tract J, Corner 1<br>24 ins. in the Ground, Witness Post North<br>BT 1 4° Spruce N. 42° E., 6.40 ft.<br>BT 2 5° Spruce S. 19° E., 13.98 ft.<br>BT 3 4° Spruce N. 44° W., 14.27 ft.   |
| AP | TRACT J | Tract J, Corner 2<br>24 ins. in the Ground, Witness Post North<br>BT 1 10° Spruce N. 13° E., 20.41 ft.<br>BT 2 5° Spruce S. 75° E., 22.16 ft.<br>BT 3 5° Spruce N. 89° W., 10.98 ft. |
| AO | TRACT J | Tract J, Corner 3<br>24 ins. in the Ground, Witness Post North<br>BT 1 7° Spruce S. 59° E., 3.34 ft.<br>BT 2 8° Spruce S. 27° W., 9.86 ft.<br>BT 3 11° Spruce N. 23° W., 26.02 ft.   |
| AR | TRACT J | Tract J, Corner 4<br>24 ins. in the Ground, Witness Post North<br>BT 1 5° Spruce N. 45° E., 30.73 ft.<br>BT 2 7° Spruce S. 42° E., 20.32 ft.<br>BT 3 9° Spruce S. 77° W., 42.83 ft.  |

#### LESSEE CERTIFICATE

I, THE UNDERSIGNED, HEREBY CERTIFY THAT I AM THE LESSEE AS SHOWN HEREON. I HEREBY APPROVE THIS SURVEY AND PLAT.

TRACT L, AND ADL No. 230857

Colter Barnes  
2 BIG SKIES  
KORVANK, AK 99606

NOTARY'S ACKNOWLEDGEMENT

SUBSCRIBED AND SWORN TO BEFORE ME THIS 13<sup>th</sup> DAY OF October, 2012.

FOR: Colter Barnes

LESSEE

NOTARY PUBLIC FOR ALASKA  
MY COMMISSION EXPIRES 7-4-13



#### LESSEE CERTIFICATE

I, THE UNDERSIGNED, HEREBY CERTIFY THAT I AM THE LESSEE AS SHOWN HEREON. I HEREBY APPROVE THIS SURVEY AND PLAT.

TRACT J, AND ADL No. 230903

PETER K. TURGON  
3001 N. LADY EIGHT CT.  
WASILLA, AK 99654

NOTARY'S ACKNOWLEDGEMENT

SUBSCRIBED AND SWORN TO BEFORE ME THIS 14<sup>th</sup> DAY OF November, 2012.

FOR: Peter Turgon

LESSEE

NOTARY PUBLIC FOR ALASKA  
MY COMMISSION EXPIRES 12/31/2012



Section 27

STATE OF ALASKA

ASLS 2009-44  
TRACT J

DETAIL  
SCALE: 1"=25'

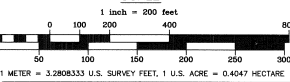
#### TRACT L MONUMENT INFORMATION

|    |         |   |
|----|---------|---|
| AY | TRACT L | Tract L, Corner 1<br>24 ins. in the Ground, Witness Post North<br>BT 1 5° Spruce N. 33° E., 4.82 ft.<br>BT 2 6° Spruce N. 32° W., 6.18 ft.<br>BT 3 6° Spruce N. 44° W., 12.34 ft.   |
| AZ | TRACT L | Tract L, Corner 2<br>28 ins. in the Ground, Witness Post North<br>BT 1 4° Spruce N. 64° E., 17.71 ft.<br>BT 2 5° Spruce S. 77° W., 27.84 ft.<br>BT 3 5° Spruce N. 52° W., 16.53 ft. |
| BA | TRACT L | Tract L, Corner 3<br>22 ins. in the Ground, Witness Post North<br>BT 1 7° Spruce N. 39° E., 12.14 ft.<br>BT 2 5° Spruce S. 42° E., 25.93 ft.<br>BT 3 5° Spruce S. 88° W., 50.82 ft. |
| BB | TRACT L | Tract L, Corner 4<br>22 ins. in the Ground, Witness Post North<br>BT 1 7° Spruce N. 40° E., 8.42 ft.<br>BT 2 7° Spruce SOUT, 13.22 ft.<br>BT 3 10° Spruce N. 40° W., 5.94 ft.       |
| BC | TRACT L | Tract L, Corner 5<br>30 in. Rebar, 28 ins. in the Ground<br>No Accessories were established.  |
| BD | TRACT L | Tract L, Corner 6<br>30 in. Rebar, 28 ins. in the Ground<br>No Accessories were established.  |

#### LEGEND:

- BLM MONUMENT RECOVERED
- PRIMARY MONUMENT SET THIS SURVEY
- SECONDARY MONUMENT SET THIS SURVEY
- PROTRACTED SECTION LINES
- SURVEYED LINES
- TIE
- MONUMENT IDENTIFIER
- RECORD INFORMATION
- ORDINARY HIGH WATER
- POINT ON LINE

#### SCALE



DATE OF SURVEY  
Beginning May 17, 2011  
Ending July 5, 2011

Stanley E. Sears  
Global Positioning Services, Inc.  
2803 Blueberry Rd.  
Anchorage, Alaska 99503

STATE OF ALASKA  
DEPARTMENT OF NATURAL RESOURCES  
DIVISION OF MINING, LAND & WATER  
ANCHORAGE, ALASKA

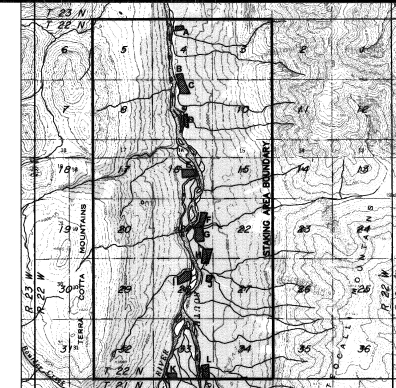
ALASKA STATE LAND SURVEY NO. 2009-44  
MOUNT RICH ADDITION REMOTE RECREATIONAL CABIN SITES  
CREATING TRACTS A THROUGH L

WITHIN UNSURVEYED SECTIONS 4, 9, 16, 21, 28 & 33,  
T. 22 N., R. 22 W.  
SEWARD MERIDIAN  
MT. MCKINLEY RECORDING DISTRICT

DRAWN BY: LSV  
DATE: 11/20/11  
SCALE: 1"= 200'

APPROVAL, RECOMMENDED  
DATE: 11/20/11  
STATEWIDE PLATING SUPERVISOR  
S.E.S.  
DNR FILE NO.  
ASLS 20090044

Pages 4 of 4



USGS QUAD, LIME HILLS (D-1) 1958 & LIME HILLS (D-2) REV. 1977

USGS QUAD, MCGRATH (A-1) REV. 1958

SCALE 1"=5280'

SCALE 1"=5280'

SCALE 1"=5280'

SCALE 1"=5280'

SCALE 1"=5280'

SCALE 1"=5280'

SCALE 1"=5280'

SCALE 1"=5280'

SCALE 1"=5280'

SCALE 1"=5280'

SCALE 1"=5280'

SCALE 1"=5280'

SCALE 1"=5280'

SCALE 1"=5280'

SCALE 1"=5280'

SCALE 1"=5280'

SCALE 1"=5280'

SCALE 1"=5280'

SCALE 1"=5280'

SCALE 1"=5280'

SCALE 1"=5280'

SCALE 1"=5280'

SCALE 1"=5280'

SCALE 1"=5280'

SCALE 1"=5280'

SCALE 1"=5280'

SCALE 1"=5280'

SCALE 1"=5280'

SCALE 1"=5280'

SCALE 1"=5280'

SCALE 1"=5280'

SCALE 1"=5280'

SCALE 1"=5280'

SCALE 1"=5280'

SCALE 1"=5280'

SCALE 1"=5280'

SCALE 1"=5280'

SCALE 1"=5280'

SCALE 1"=5280'

SCALE 1"=5280'

SCALE 1"=5280'

SCALE 1"=5280'

SCALE 1"=5280'

SCALE 1"=5280'

SCALE 1"=5280'

SCALE 1"=5280'

SCALE 1"=5280'

SCALE 1"=5280'

SCALE 1"=5280'

SCALE 1"=5280'

SCALE 1"=5280'

SCALE 1"=5280'

SCALE 1"=5280'

SCALE 1"=5280'

SCALE 1"=5280'

SCALE 1"=5280'

SCALE 1"=5280'

SCALE 1"=5280'

SCALE 1"=5280'

SCALE 1"=5280'

SCALE 1"=5280'

SCALE 1"=5280'

SCALE 1"=5280'

SCALE 1"=5280'

SCALE 1"=5280'

SCALE 1"=5280'

SCALE 1"=5280'

SCALE 1"=5280'

SCALE 1"=5280'

SCALE 1"=5280'

SCALE 1"=5280'

Mt McKinley  
2013-1

Attachment "A"

ALASKA STATE LAND SURVEY 2009-44

LESSEE CERTIFICATE

I, the undersigned, hereby certify that I am the lessee as shown hereon. I hereby approve this survey and plat.

TRACT No. "H", ADL No. 230851



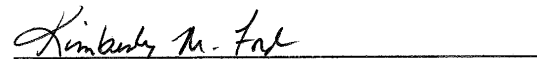
Karl Zeiset  
5555 McCracken Road  
Hernando, MS 38632

7/20/2012  
Date

NOTARY'S ACKNOWLEDGEMENT

Subscribed and sworn to before me this 20 day of July, 2012

For Karl Zeiset



Notary Public for:  
My Commission Expires March 24, 2016

