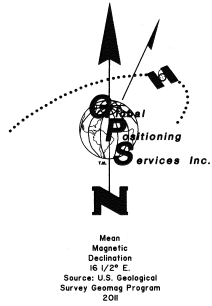


INNOKO RIVER REMOTE RECREATIONAL CABIN SITES

INDEX SHEET



TYPICAL MONUMENTS SET THIS SURVEY

PRIMARY MONUMENT



3 1/4" ALUMINUM DISK ON A 2 1/2" ALUMINUM POST, 30" LONG, WITH A MAGNET IN A GREY PLASTIC CASE AT THE BASE.

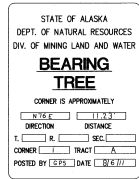
TYPICAL WITNESS POST

AN ORANGE THERMOPLASTIC MOUNTED ON CARBONITE POST, 6 FT. LONG, SET AT A CARDINAL DIRECTION WITHIN 1 FT. OF ALL PRIMARY MONUMENTS.



TYPICAL BEARING TREE TAG

A YELLOW 4 1/2" x 8" ALUMINUM TAG SET AT BREAKST RIGHT TREES ARE NOT SCRIBED



NOTES

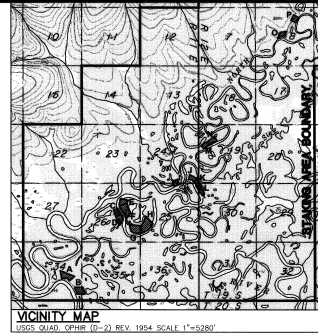
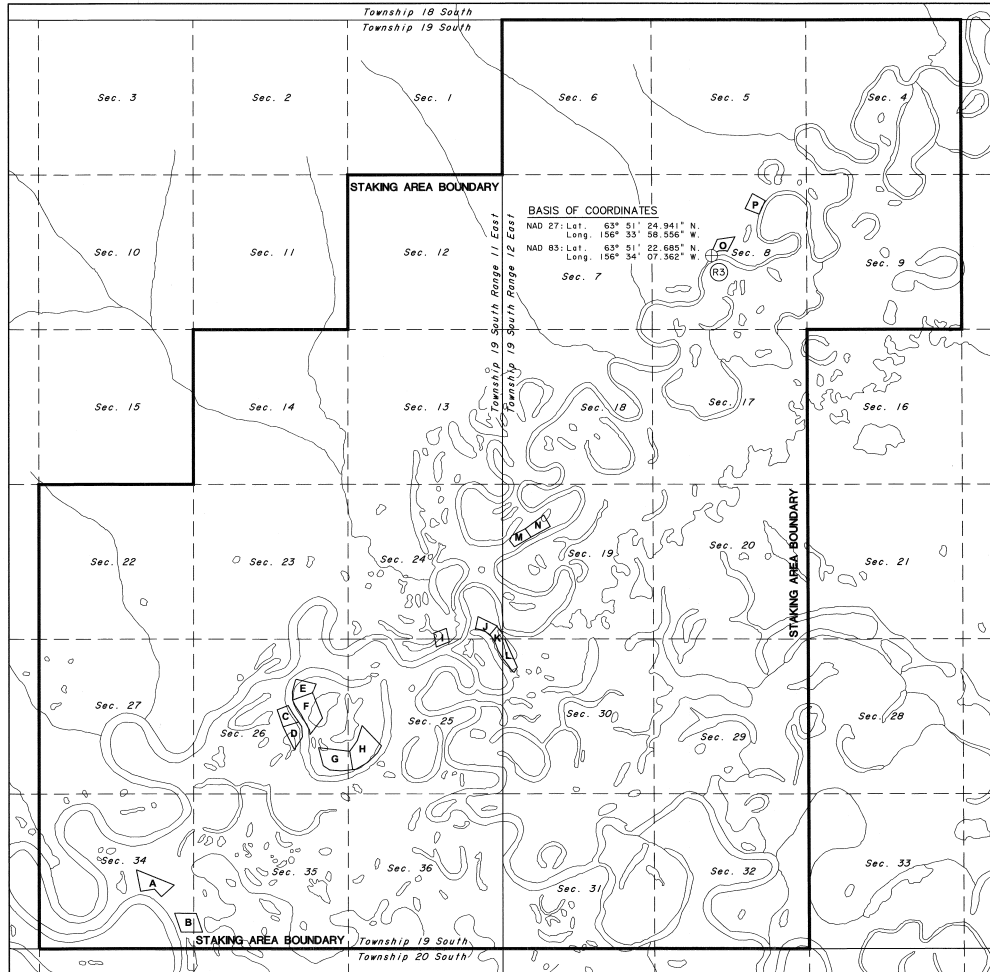
- THIS SURVEY WAS ACCOMPLISHED IN ACCORDANCE WITH AS 38.05.600, GSC 771, and RRCS SI 2009-42.
- THE BASIS OF BEARING FOR THIS PLAT WAS DETERMINED BY HIGH PRECISION GPS SURVEY USING TRIMBLE R6 AND R8 CARRIER PHASE RECEIVERS, DIFFERENTIALLY CORRECTED AND PROCESSED USING TRIMBLE GEOMATICS OPTICE, VERSION 1.6.3 SOFTWARE.
- BASIS OF COORDINATES WAS THE NAD 83 VALUES FOR THE STATE OF ALASKA DEPARTMENT OF NATURAL RESOURCES MONUMENT CM 1 AZMUTH MARK AS SHOWN ON THE PLAT OF ALASKA STATE CADASTRAL CONTROL SURVEY PLAT RECORDED IN THE MT. MCKINLEY RECORDING DISTRICT AS PLAT NO. 62-4. THIS MONUMENT IS DESIGNATED AS R3 OF THIS SURVEY.
- ALL BEARINGS SHOWN ARE TRUE BEARINGS AS ORIENTED TO THE BASIS OF BEARING AND DISTANCES SHOWN ARE REDUCED TO HORIZONTAL FIELD DISTANCES. BEARINGS AND DISTANCES SHOWN ON THIS PLAT ARE NAD 83. ALL BEARINGS ARE MEAN GEODETIC UNLESS OTHERWISE NOTED.
- THE ACCURACY OF THIS SURVEY IS GREATER THAN 1:5000.
- ALL PARCELS OF LAND OWNED BY THE STATE OF ALASKA, LOCATED WITHIN 50.00 FEET OF OR BISECTED BY A SURVEYED OR PROTRACTED SECTION LINE, ARE SUBJECT TO A 50 FOOT (50') EASEMENT ON EACH SIDE OF THE SECTION LINE, WHICH IS RESERVED TO THE STATE OF ALASKA FOR PUBLIC HIGHWAYS UNDER A.S.19.10.D10.
- THE EXISTING LESSEES' CLAIM CORNERS WERE RECOVERED AND USED TO CONTROL THE LOCATION OF THE TRACT BOUNDARIES.
- THE NATURAL MEANDERS OF THE LINE OF ORDINARY HIGH WATER (OHW) FORM THE TRUE BOUNDS OF TRACTS C-H AND J-L. THE APPROXIMATE LINE OF OHW, AS SHOWN, IS FOR AREA COMPUTATIONS ONLY, WITH THE TRUE CORNERS BEING ON THE EXTENSION OF THE SIDELINES AND THEIR INTERSECTION WITH THE NATURAL MEANDERS.
- THERE IS A 100-FOOT BUILDING SETBACK FROM ALL STREAMS AND ALL OTHER WATER BODIES DETERMINED TO BE PUBLIC OR NAVIGABLE.

LEGEND:

- PRIMARY MONUMENT RECOVERED
- PRIMARY MONUMENT SET THIS SURVEY
- PROTRACTED SECTION LINES
- SURVEYED LINES
- TIE
- ADDITIONAL MEANDERS
- MONUMENT IDENTIFIER
- RECORD INFORMATION
- ORDINARY HIGH WATER
- POINT ON LINE

SHEET INDEX

TRACT	ADL No.	SHEET	TRACT	ADL No.	SHEET
A	ADL 230904	2	I	ADL 230913	4
B	ADL 230868	2	J	ADL 230768	4
C	ADL 230777	3	K	ADL 230765	4
D	ADL 230842	3	L	ADL 230766	4
E	ADL 230888	3	M	ADL 230751	5
F	ADL 230821	3	N	ADL 230750	5
G	ADL 230876	3	O	ADL 230867	5
H	ADL 230877	3	P	ADL 230908	5



TAX CERTIFICATE

THIS SUBDIVISION LIES OUTSIDE OF ANY TAXING AUTHORITY, AT THE TIME OF FILING.

CERTIFICATE OF OWNERSHIP AND DEDICATION

I, THE UNDERSIGNED, HEREBY CERTIFY THAT I AM THE DIRECTOR, DIVISION OF MINING, LAND AND WATER AND THAT THE STATE OF ALASKA IS THE OWNER OF ASLS 2009-42, AS SHOWN HEREON. I HEREBY APPROVE THIS SURVEY AND PLAT FOR THE STATE OF ALASKA, AND DEDICATE FOR PUBLIC OR PRIVATE USE AS NOTED, ALL EASEMENTS, PUBLIC UTILITY AREAS, AND RIGHTS-OF-WAY AS SHOWN AND DESCRIBED HEREON.

DATE: Jan 18, 2013 DIRECTOR, DIVISION OF MINING, LAND AND WATER

NOTARY'S ACKNOWLEDGEMENT

SUBSCRIBED AND SWORN TO BEFORE ME THIS 18th DAY OF JANUARY, 2013.

For: Gerald Jennings
Ronda Wilson
NOTARY PUBLIC FOR ALASKA
MY COMMISSION EXPIRES with office

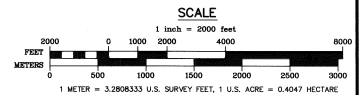


PLAT APPROVAL

THIS PLAT IS APPROVED BY THE COMMISSIONER OF THE DEPARTMENT OF NATURAL RESOURCES, OR THE COMMISSIONER'S DESIGNEE, IN ACCORDANCE WITH AS 40.15.

For: Gerald Jennings Jan 18, 2013
COMMISSIONER DATE

BY APPROVAL OF THIS PLAT, THE COMMISSIONER OF THE DEPARTMENT OF NATURAL RESOURCES, HEREBY ACCEPTS FOR PUBLIC USE AND PUBLIC PURPOSES THE REAL PROPERTY DEDICATED TO THE PUBLIC HEREON, INCLUDING EASEMENTS, RIGHTS-OF-WAY, ALLEYS AND ROADWAYS. THE ACCEPTANCE OF SUCH DEDICATED AREAS FOR PUBLIC USE AND PUBLIC PURPOSE DOES NOT OBLIGATE THE DEPARTMENT, ANY GOVERNING BODY, OR THE PUBLIC TO CONSTRUCT, OPERATE, MAINTAIN OR MANAGE IMPROVEMENTS.



DATE OF SURVEY Beginning <u>May 25, 2011</u> Ending <u>August 6, 2011</u>	Stanley E. Sears Global Positioning Services, Inc. 2803 Blueberry Rd. Anchorage, Alaska 99503
STATE OF ALASKA DEPARTMENT OF NATURAL RESOURCES DIVISION OF MINING, LAND & WATER ANCHORAGE, ALASKA	
ALASKA STATE LAND SURVEY NO. 2009-42	
INNOKO RIVER REMOTE RECREATIONAL CABIN SITES CREATING TRACTS A THROUGH P	
WITHIN UNSURVEYED SECTIONS 24, 25, 26, 34 & 35, T. 19 S., R. 11 E. AND UNSURVEYED SECTIONS 8, 19 & 30, T. 19 S., R. 12 E. KATEL RIVER MERIDIAN, ALASKA MT. MCKINLEY RECORDING DISTRICT	
DRAWN BY: <u>LSV</u>	APPROVAL RECOMMENDED
DATE: <u>12/20/11</u>	DATE: <u>1/15/12</u>
SCALE: <u>1" = 2000'</u>	CHECKED: <u>DNR FILE NO.</u>
	S.E.S. ASLS 20090042



SURVEYOR'S CERTIFICATE

I HEREBY CERTIFY THAT I AM PROPERLY REGISTERED AND LICENSED TO PRACTICE LAND SURVEYING IN THE STATE OF ALASKA. THAT THIS PLAT REPRESENTS A SURVEY MADE BY ME OR UNDER MY DIRECT SUPERVISION, THAT THE MONUMENTS SHOWN HEREON ACTUALLY EXIST AS DESCRIBED, AND THAT ALL DIMENSIONS AND OTHER DETAILS ARE CORRECT.

DATE: Stanley E. Sears
REGISTERED LAND SURVEYOR NO. LS-2087

Mt McKinley 2013-2

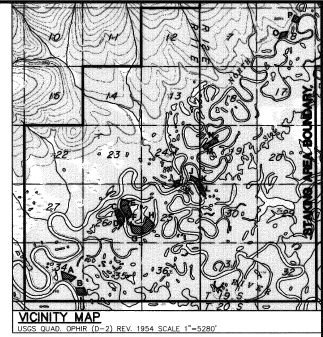
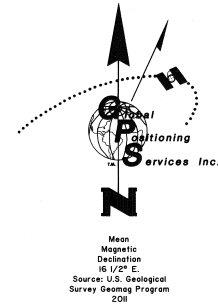
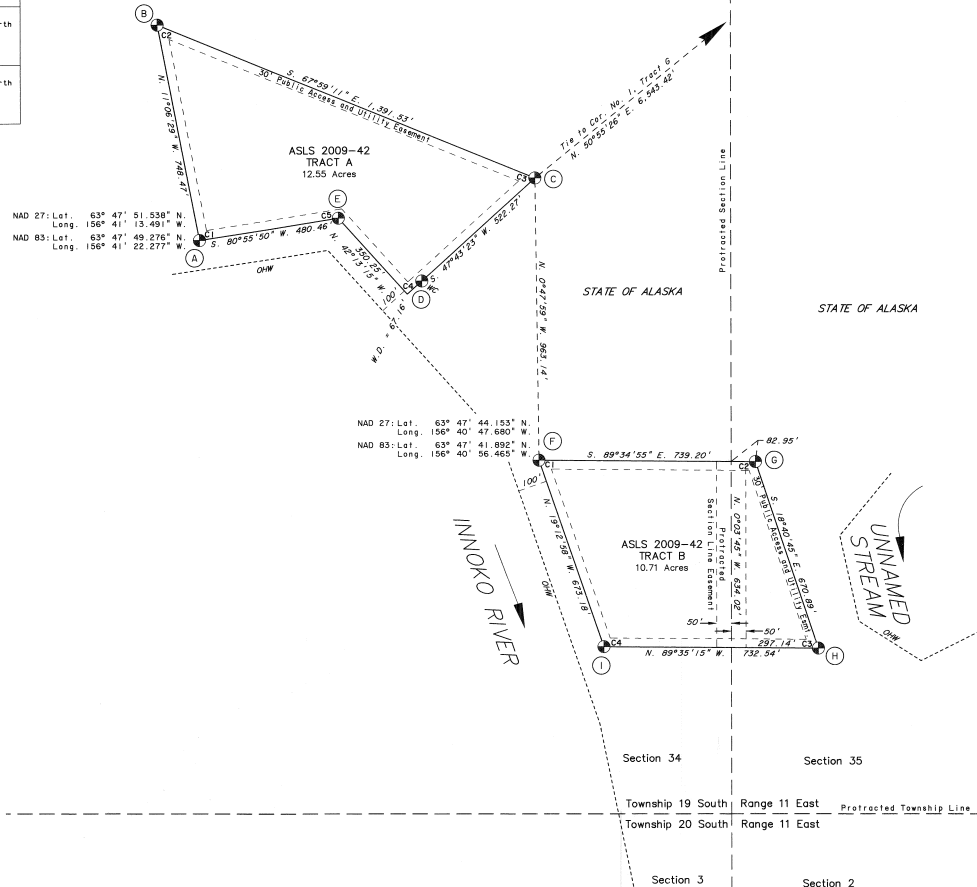
SHEET 1 OF 5

TRACT A MONUMENT INFORMATION

(A)	TR A	Tract A, Corner 1 26 Ins. In the Ground, Witness Post North BT 1 11" Spruce N. 78° E., 11.23 ft. BT 2 13" Spruce N. 78° W., 20.32 ft. BT 3 13" Spruce N. 3° W., 15.31 ft.
(B)	TR A	Tract A, Corner 2 24 Ins. In the Ground, Witness Post North BT 1 8" Birch N. 25° E., 26.42 ft. BT 2 16" Spruce S. 18° W., 16.06 ft. BT 3 10" Birch N. 84° W., 23.18 ft.
(C)	TR A	Tract A, Corner 3 24 Ins. In the Ground, Witness Post North BT 1 3" Spruce S. 3° W., 13.98 ft. BT 2 14" Spruce S. 59° W., 23.43 ft. BT 3 9" Birch S. 87° W., 23.15 ft.
(D)	TR A	Tract A, Witness Corner 4 24 Ins. In the Ground, Witness Post North BT 1 14" Spruce N. 18° E., 17.46 ft. BT 2 12" Spruce N. 51° W., 18.53 ft. BT 3 10" Spruce N. 11° W., 19.08 ft.
(E)	TR A	Tract A, Corner 5 24 Ins. In the Ground, Witness Post North BT 1 10" Birch N. 23° E., 13.02 ft. BT 2 10" Birch N. 72° E., 13.29 ft. BT 3 10" Spruce S. 83° W., 17.26 ft.

GEODETIC TIES TO THE BASIS OF COORDINATES (R3)

TRACT	COR	MON	Bearing	Distance
A	C1	A	N. 41° 59' 25" E.	29,169.45'
B	C1	F	N. 39° 17' 47" E.	28,984.69'



LESSEE CERTIFICATE

I, THE UNDERSIGNED, HEREBY CERTIFY THAT I AM THE LESSEE AS SHOWN HEREON. I HEREBY APPROVE THIS SURVEY AND PLAT.

TRACT A, AND ADL No. 230904

ROBERT L. MASSENGILL
P.O. BOX 932
KASLOF, AK 99610

DATE: 9-29-12

NOTARY'S ACKNOWLEDGEMENT

SUBSCRIBED AND SWORN TO BEFORE ME THIS 24th DAY OF Sept. 2012.

FOR: Robert Massegill
LESSEE

Notary Public for Alaska
MY COMMISSION EXPIRES 12/31/13



LESSEE CERTIFICATE

I, THE UNDERSIGNED, HEREBY CERTIFY THAT I AM THE LESSEE AS SHOWN HEREON. I HEREBY APPROVE THIS SURVEY AND PLAT.

TRACT B, AND ADL No. 230866

MICHAEL E. McDONALD
2021 N. GUNFLINT TRAIL
WASILLA, AK 99654

DATE: 11/13/12

NOTARY'S ACKNOWLEDGEMENT

SUBSCRIBED AND SWORN TO BEFORE ME THIS 13th DAY OF November, 2012.

FOR: Michael McDonald
LESSEE

Notary Public for Alaska
MY COMMISSION EXPIRES 12/31/13

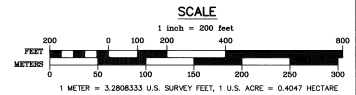


TRACT B MONUMENT INFORMATION

(F)	TR B	Tract B, Corner 1 25 Ins. In the Ground, Witness Post North BT 1 10" Spruce N. 47° E., 18.93 ft. BT 2 8" Spruce S. 54° E., 12.87 ft. BT 3 9" Spruce N. 3° W., 27.71 ft.
(G)	TR B	Tract B, Corner 2 25 Ins. In the Ground, Witness Post North BT 1 12" Birch N. 34° E., 11.22 ft. BT 2 4" Spruce S. 6° W., 7.93 ft. BT 3 5" Spruce N. 52° W., 17.82 ft.
(H)	TR B	Tract B, Corner 3 25 Ins. In the Ground, Witness Post North BT 1 17" Birch N. 71° E., 32.65 ft. BT 2 20" Spruce S. 31° W., 16.00 ft. BT 3 11" Birch S. 82° W., 35.66 ft.
(I)	TR B	Tract B, Corner 4 25 Ins. In the Ground, Witness Post North BT 1 9" Birch N. 42° E., 16.93 ft. BT 2 4" Birch S. 4° E., 12.85 ft. BT 3 7" Spruce N. 10° W., 19.18 ft.

LEGEND:

- ⊕ PRIMARY MONUMENT RECOVERED
- ⊙ PRIMARY MONUMENT SET THIS SURVEY
- PROTRACTED SECTION LINES
- SURVEYED LINES
- - - TIE
- ADDITIONAL MEANDERS
- MONUMENT IDENTIFIER
- () RECORD INFORMATION
- OHW ORDINARY HIGH WATER
- POL POINT ON LINE



DATE OF SURVEY: Beginning May 25, 2011, Ending August 5, 2011

Stanley E. Sears
Global Positioning Services, Inc.
2603 Blueberry Rd.
Anchorage, Alaska 99503

STATE OF ALASKA
DEPARTMENT OF NATURAL RESOURCES
DIVISION OF MINING, LAND & WATER
ANCHORAGE, ALASKA

ALASKA STATE LAND SURVEY NO. 2009-42
INNOKO RIVER REMOTE RECREATIONAL CABIN SITES
CREATING TRACTS A THROUGH P

WITHIN UNSURVEYED SECTIONS 24, 25, 26, 34 & 35, T. 19 S., R. 11 E. AND UNSURVEYED SECTIONS 8, 18 & 30, T. 19 S., R. 12 E. KATEL RIVER MERIDIAN, ALASKA MT. MCKINLEY RECORDING DISTRICT

DRAWN BY: LSV APPROVAL, RECOMMENDED DATE: 12/20/11 BY: [Signature] DATE: 1/13/12

SCALE: 1" = 200' CHECKED: [Signature] DNR FILE NO. ASLS 20090042

Mt. McKinley 2013-2 SHEET 2 OF 5

LESSEE CERTIFICATE

I, THE UNDERSIGNED, HEREBY CERTIFY THAT I AM THE LESSEE AS SHOWN HEREON. I HEREBY APPROVE THIS SURVEY AND PLAT.

TRACT C, AND ADL NO. 230777
FOR: James D. Knowles
DATE: 9-24-12

NOTARY'S ACKNOWLEDGEMENT

SUBSCRIBED AND SWORN TO BEFORE ME THIS 24 DAY OF Sept 2012

FOR: James D. Knowles

LESSEE: James D. Knowles

NOTARY PUBLIC FOR ALASKA

MY COMMISSION EXPIRES 11/15/14



LESSEE CERTIFICATE

I, THE UNDERSIGNED, HEREBY CERTIFY THAT I AM THE LESSEE AS SHOWN HEREON. I HEREBY APPROVE THIS SURVEY AND PLAT.

TRACT D, AND ADL NO. 230868
FOR: Mary B. Holden
DATE: 12/3/12

NOTARY'S ACKNOWLEDGEMENT

SUBSCRIBED AND SWORN TO BEFORE ME THIS 3 DAY OF Dec 2012

FOR: Mary B. Holden

LESSEE: Mary B. Holden

NOTARY PUBLIC FOR ALASKA

MY COMMISSION EXPIRES 11/15/14



LESSEE CERTIFICATE

I, THE UNDERSIGNED, HEREBY CERTIFY THAT I AM THE LESSEE AS SHOWN HEREON. I HEREBY APPROVE THIS SURVEY AND PLAT.

TRACT E, AND ADL NO. 230877
FOR: Andrew J. Young
DATE: 10/08/2012

NOTARY'S ACKNOWLEDGEMENT

SUBSCRIBED AND SWORN TO BEFORE ME THIS 8 DAY OF Oct 2012

FOR: Andrew J. Young

LESSEE: Andrew J. Young

NOTARY PUBLIC FOR ALASKA

MY COMMISSION EXPIRES 11/15/14



LESSEE CERTIFICATE

I, THE UNDERSIGNED, HEREBY CERTIFY THAT I AM THE LESSEE AS SHOWN HEREON. I HEREBY APPROVE THIS SURVEY AND PLAT.

TRACT F, AND ADL NO. 230876
FOR: Gerald L. Sousa
DATE: N/A

NOTARY'S ACKNOWLEDGEMENT

SUBSCRIBED AND SWORN TO BEFORE ME THIS DAY OF N/A

FOR: Gerald L. Sousa

LESSEE: Gerald L. Sousa

NOTARY PUBLIC FOR ALASKA

MY COMMISSION EXPIRES 11/15/14



LESSEE CERTIFICATE

I, THE UNDERSIGNED, HEREBY CERTIFY THAT I AM THE LESSEE AS SHOWN HEREON. I HEREBY APPROVE THIS SURVEY AND PLAT.

TRACT G, AND ADL NO. 230888
FOR: John S. McLean
DATE: 12/3/12

NOTARY'S ACKNOWLEDGEMENT

SUBSCRIBED AND SWORN TO BEFORE ME THIS 3 DAY OF Dec 2012

FOR: John S. McLean

LESSEE: John S. McLean

NOTARY PUBLIC FOR ALASKA

MY COMMISSION EXPIRES 11/15/14



LESSEE CERTIFICATE

I, THE UNDERSIGNED, HEREBY CERTIFY THAT I AM THE LESSEE AS SHOWN HEREON. I HEREBY APPROVE THIS SURVEY AND PLAT.

TRACT H, AND ADL NO. 230877
FOR: Kathleen B. Holden
DATE: N/A

NOTARY'S ACKNOWLEDGEMENT

SUBSCRIBED AND SWORN TO BEFORE ME THIS DAY OF N/A

FOR: Kathleen B. Holden

LESSEE: Kathleen B. Holden

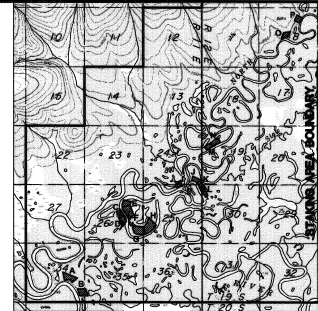
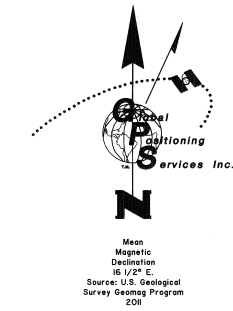
NOTARY PUBLIC FOR ALASKA

MY COMMISSION EXPIRES 11/15/14



GEODETTIC TIES TO THE BASIS OF COORDINATES (R3)

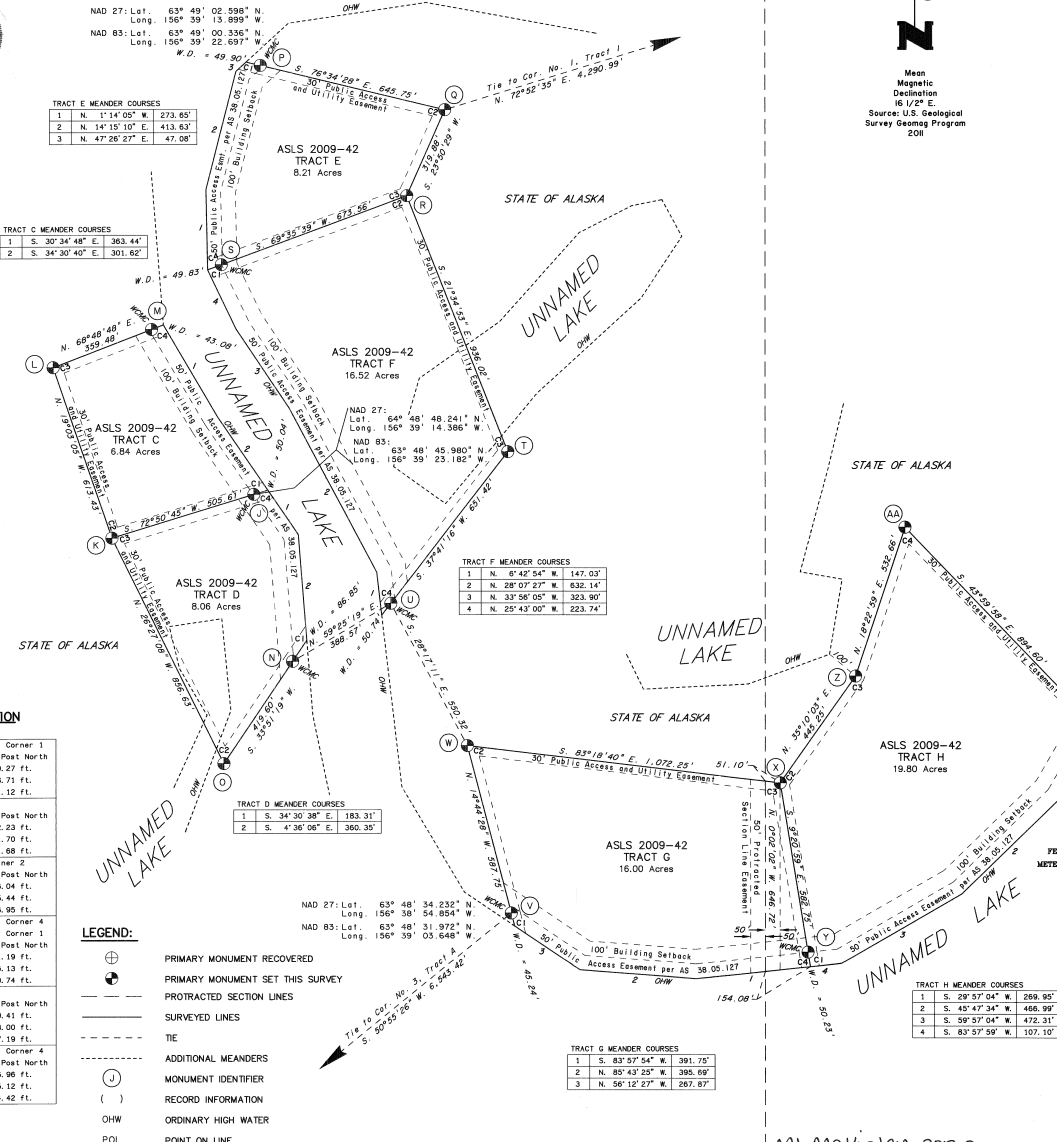
Table with columns: TRACT COR, MON, BEARING, DISTANCE. Rows for Tract C, D, E, F.



VICINITY MAP
USGS QUAD 6048 (71-7) REV. 1954 SCALE 1"=6250'

TRACTS G & H MONUMENT INFORMATION

Table listing monument information for Tracts G and H, including corner descriptions and distances.



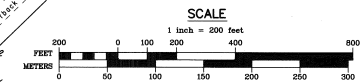
TRACTS C & D MONUMENT INFORMATION

Table listing monument information for Tracts C and D, including corner descriptions and distances.

TRACTS E & F MONUMENT INFORMATION

Table listing monument information for Tracts E and F, including corner descriptions and distances.

- LEGEND: PRIMARY MONUMENT RECOVERED, PRIMARY MONUMENT SET THIS SURVEY, PROTRACTED SECTION LINES, SURVEYED LINES, TIE, ADDITIONAL MEANDERS, MONUMENT IDENTIFIER, RECORD INFORMATION, OHW, POL.



DATE OF SURVEY: May 25, 2011
ENDING: August 6, 2011
STATE OF ALASKA
DEPARTMENT OF NATURAL RESOURCES
DIVISION OF MINING, LAND & WATER
ALASKA STATE LAND SURVEY NO. 2009-42

LESSEE CERTIFICATE

I, THE UNDERSIGNED, HEREBY CERTIFY THAT I AM THE LESSEE AS SHOWN HEREON. I HEREBY APPROVE THIS SURVEY AND PLAT.

TRACT I, AND ADL No. 230913
 Neil T. Rosander DATE 8/31/12

NEIL T. ROSANDER
 P.O. BOX 156
 MCCRATH, AK 99627

NOTARY'S ACKNOWLEDGEMENT
 SUBSCRIBED AND SHOWN TO BEFORE ME THIS 31st DAY OF AUGUST 2012
 FOR Neil T. Rosander
 LESSEE



LESSEE CERTIFICATE

I, THE UNDERSIGNED, HEREBY CERTIFY THAT I AM THE LESSEE AS SHOWN HEREON. I HEREBY APPROVE THIS SURVEY AND PLAT.

TRACT J, AND ADL No. 230768
 Steffen C. Strick DATE 8-8-2012

STEFFEN C. STRICK
 P.O. BOX 128
 MCCRATH, AK 99627

NOTARY'S ACKNOWLEDGEMENT
 SUBSCRIBED AND SHOWN TO BEFORE ME THIS 8th DAY OF AUGUST 2012
 FOR Steffen C. Strick
 LESSEE



LESSEE CERTIFICATE

I, THE UNDERSIGNED, HEREBY CERTIFY THAT I AM THE LESSEE AS SHOWN HEREON. I HEREBY APPROVE THIS SURVEY AND PLAT.

TRACT K, AND ADL No. 230765
 Jay T. DeLima DATE 9/25/12

JAY T. DELIMA
 P.O. BOX 70
 RUBY, AK 99768

NOTARY'S ACKNOWLEDGEMENT
 SUBSCRIBED AND SHOWN TO BEFORE ME THIS 25th DAY OF SEPTEMBER 2012
 FOR Jay T. DeLima
 LESSEE



LESSEE CERTIFICATE

I, THE UNDERSIGNED, HEREBY CERTIFY THAT I AM THE LESSEE AS SHOWN HEREON. I HEREBY APPROVE THIS SURVEY AND PLAT.

TRACT L, AND ADL No. 230786
 Harold Esmaika DATE 9-27-12

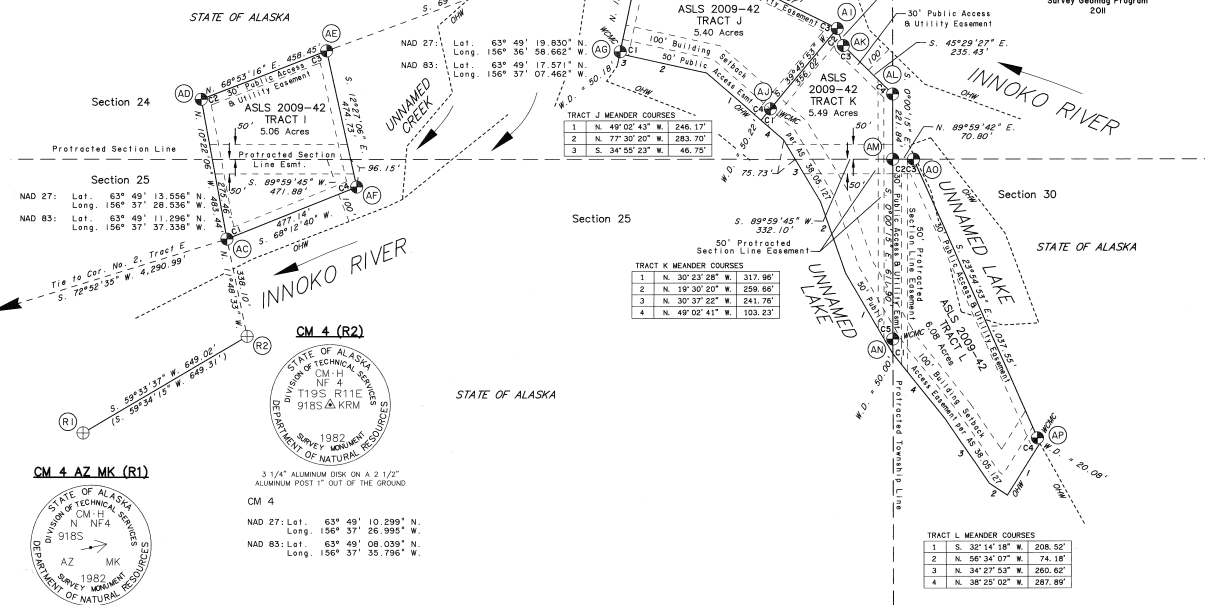
HAROLD ESMAIKA
 P.O. BOX 29
 RUBY, AK 99768

NOTARY'S ACKNOWLEDGEMENT
 SUBSCRIBED AND SHOWN TO BEFORE ME THIS 27th DAY OF SEPTEMBER 2012
 FOR Harold Esmaika
 LESSEE



TRACT I MONUMENT INFORMATION

AC	TR I	Tract I, Corner 1 26 ins. in the Ground, Witness Post North BT 1 14" Birch S. 9' E., 24.30 ft. BT 2 14" Birch N. 53' E., 15.23 ft. BT 3 15" Birch N. 5' W., 34.50 ft.
AD	TR I	Tract I, Corner 2 26 ins. in the Ground, Witness Post North BT 1 7" Spruce S. 77' E., 26.35 ft. BT 2 8" Spruce S. 15' W., 16.85 ft. BT 3 4" Spruce N. 66' W., 10.34 ft.
AE	TR I	Tract I, Corner 3 26 ins. in the Ground, Witness Post North BT 1 12" Spruce N. 30' E., 23.11 ft. BT 2 9" Spruce S. 4' E., 23.82 ft. BT 3 7" Spruce S. 77' W., 20.92 ft.
AF	TR I	Tract I, Corner 4 26 ins. in the Ground, Witness Post North BT 1 18" Birch N. 12' E., 74.56 ft. BT 2 6" Birch S. 87' E., 30.85 ft. BT 3 13" Birch S. 41' W., 62.71 ft.



CM 4 AZ MK (R1)

3 1/4" ALUMINUM DISK ON A 2 1/2" ALUMINUM POST 1" OUT OF THE GROUND
 CM 4
 NAD 27: Lat. 63° 49' 10.299" N
 Long. 156° 37' 26.995" W
 NAD 83: Lat. 63° 49' 08.039" N
 Long. 156° 37' 35.796" W

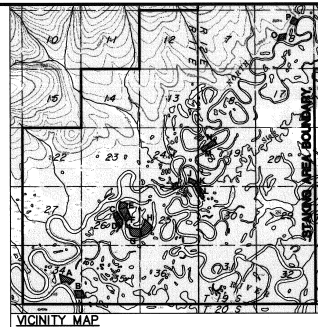
LEGEND:

- ⊕ PRIMARY MONUMENT RECOVERED
- ⊙ PRIMARY MONUMENT SET THIS SURVEY
- PROTECTED SECTION LINES
- SURVEYED LINES
- TIE
- ADDITIONAL MEANDERS
- MONUMENT IDENTIFIER
- () RECORD INFORMATION
- OHW ORDINARY HIGH WATER
- POL POINT ON LINE

TRACTS J, K AND L MONUMENT INFORMATION

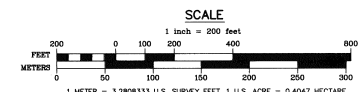
AG	WC TR J	Tract J, Witness Corner Meander Corner 1 28 ins. in the Ground, Witness Post North BT 1 11" Spruce N. 38' E., 23.42 ft. BT 2 7" Birch N. 08' W., 23.67 ft. BT 3 22" Spruce N. 5' W., 27.85 ft.
AH	WC TR J	Tract J, Corner 2 26 ins. in the Ground, Witness Post North BT 1 5" Spruce S. 34' E., 17.08 ft. BT 2 14" Spruce S. 16' W., 22.36 ft. BT 3 14" Spruce N. 27' W., 17.53 ft.
AI	WC TR J	Tract J, Corner 3, Tract K, Corner 2 24 ins. in the Ground, Witness Post North BT 1 8" Spruce S. 65' E., 24.17 ft. BT 2 14" Spruce S. 30' W., 20.66 ft. BT 3 10" Birch N. 57' W., 23.69 ft.
AL	WC TR J	Tract J, Witness Corner Meander Corner 4 Tract K, Witness Corner Meander Corner 1 24 ins. in the Ground, Witness Post North BT 1 20" Spruce N. 20' E., 22.66 ft. BT 2 21" Spruce N. 81' E., 21.92 ft. BT 3 19" Spruce N. 25' W., 30.67 ft.
AK	WC TR K	Tract K, Corner 3 24 ins. in the Ground, Witness Post North BT 1 14" Birch N. 69' E., 28.30 ft. BT 2 16" Birch S. 58' W., 20.97 ft. BT 3 18" Spruce N. 33' W., 23.30 ft.

AM	WC TR K	Tract K, Corner 4 24 ins. in the Ground, Witness Post North BT 1 16" Birch N. 39' E., 17.40 ft. BT 2 20" Birch S. 69' E., 28.55 ft. BT 3 5" Birch S. 37' W., 30.41 ft.
AN	WC TR L	Tract L, Corner 2 24 ins. in the Ground, Witness Post North BT 1 14" Birch N. 13' E., 16.98 ft. BT 2 18" Spruce S. 47' W., 43.39 ft. BT 3 17" Spruce N. 68' W., 12.54 ft.
AO	WC TR L	Tract K, Witness Corner Meander Corner 5 Tract L, Witness Corner Meander Corner 1 28 ins. in the Ground, Witness Post North BT 1 11" Spruce N. 47' E., 10.36 ft. BT 2 8" Spruce S. 89' E., 11.35 ft. BT 3 8" Spruce N. 4' W., 10.74 ft.
AP	WC TR L	Tract L, Corner 3 24 ins. in the Ground, Witness Post North BT 1 24" Birch S. 32' W., 48.21 ft. BT 2 8" Birch S. 73' W., 66.65 ft. BT 3 3" Willow N. 76' W., 35.84 ft.
AP	WC TR L	Tract L, Witness Corner Meander Corner 4 26 ins. in the Ground, Witness Post North BT 1 14" Spruce N. 53' E., 18.71 ft. BT 2 9" Spruce S. 86' E., 35.66 ft. BT 3 15" Spruce N. 46' W., 15.72 ft.



GEODETIC TIES TO THE BASIS OF COORDINATES (R3)

TRACT COR	MON	BEARING	DISTANCE
I	CI	AC	N. 35° 12' 18" E., 16,335.90'
J	CI	AG	N. 32° 28' 09" E., 15,060.00'



DATE OF SURVEY
 Beginning May 25, 2011
 Ending August 6, 2011

STATE OF ALASKA
 DIVISION OF MINING, LAND & WATER
 ANCHORAGE, ALASKA 99503

ALASKA STATE LAND SURVEY NO. 2009-42

INNOKO RIVER REMOTE RECREATIONAL CABIN SITES
 CREATING TRACTS A THROUGH P

WITHIN UNSURVEYED SECTIONS 24, 25, 26, 34 & 35,
 T. 19 S., R. 11 E. AND
 UNSURVEYED SECTIONS 8, 13 & 30, AL 19 S., R. 12 E.
 MATEL RIVER MERIDIAN, ALASKA
 MT. MCKINLEY RECORDING DISTRICT

DRAWN BY: LSV
DATE: 12/2011
SCALE: 1" = 200'

APPROVAL RECOMMENDED
 STATE PLANNING SUPERVISOR DATE 1/15/13
 CHECKED: S.E.S. DNR FILE NO. ASLS 20090042

Mt. McKinley 2013-2

SHEET 4 OF 5

LESSEE CERTIFICATE

I, THE UNDERSIGNED, HEREBY CERTIFY THAT I AM THE LESSEE AS SHOWN HEREON. I HEREBY APPROVE THIS SURVEY AND PLAT.

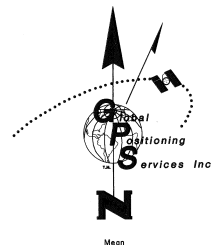
TRACT M, AND ADL No. 230751

James Johnson 06/19/2012
 JAMES JOHNSON DATE
 121 TRINIDAD DRIVE
 FAIRBANKS, AK 99709

NOTARY'S ACKNOWLEDGEMENT

SUBSCRIBED AND SWORN TO BEFORE ME THIS 19 DAY OF June 2012
 FOR: *James Johnson*
 LESSEE

Robin Smith
 NOTARY PUBLIC FOR ALASKA
 MY COMMISSION EXPIRES *with office*



Mean Magnetic Declination 16 1/2° E.
 Source: U.S. Geological Survey Geomag Program 2011

LESSEE CERTIFICATE

I, THE UNDERSIGNED, HEREBY CERTIFY THAT I AM THE LESSEE AS SHOWN HEREON. I HEREBY APPROVE THIS SURVEY AND PLAT.

TRACT N, AND ADL No. 230750

Ronald D. Rockstad June 21, 2012
 RONALD D. ROCKSTAD DATE
 1946 SWALLOW DRIVE
 FAIRBANKS, AK 99709

NOTARY'S ACKNOWLEDGEMENT

SUBSCRIBED AND SWORN TO BEFORE ME THIS 21st DAY OF June 2012
 FOR: *Ronald D. Rockstad*
 LESSEE

Robin Smith
 NOTARY PUBLIC FOR ALASKA
 MY COMMISSION EXPIRES *with office*

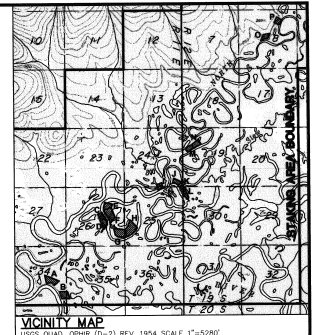
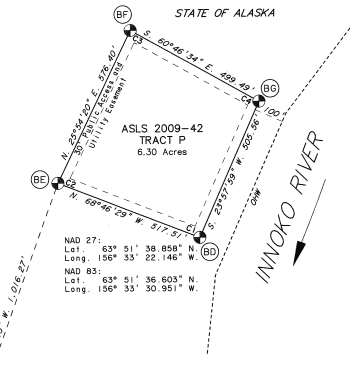


GEODETIC TIES TO THE BASIS OF COORDINATES (R3)

TRACT	COR	MON	BEARING	DISTANCE
M	C1	AQ	N. 35°22'43" E.	11,663.15'
O	C1	AX	S. 80°05'24" E.	47.34'
P	C1	BD	S. 49°05'34" W.	2,159.32'

TRACT P MONUMENT INFORMATION

BE	TR P	TRACT P, Corner 1 26 ins. in the Ground, Witness Post North BT 1 5" Spruce N. 25° E., 9.05 ft. BT 2 8" Birch S. 30° E., 30.51 ft. BT 3 9" Spruce S. 16° W., 21.59 ft.
BE	TR P	TRACT P, Corner 2 24 ins. in the Ground, Witness Post North BT 1 3" Spruce S. 78° E., 20.44 ft. BT 2 3" Spruce S. 19° W., 12.46 ft. BT 3 5" Spruce N. 56° W., 12.00 ft.
BE	TR P	TRACT P, Corner 3 25 ins. in the Ground, Witness Post North BT 1 5" Spruce N. 54° E., 10.36 ft. BT 2 4" Spruce S. 22° E., 17.83 ft. BT 3 4" Spruce N. 33° W., 9.08 ft.
BE	TR P	TRACT P, Corner 4 26 ins. in the Ground, Witness Post North BT 1 4" Spruce N. 61° E., 22.16 ft. BT 2 4" Spruce S. 19° W., 26.65 ft. BT 3 7" Spruce N. 11° W., 17.35 ft.



VICINITY MAP (USGS QUAD 600810-2) REV. 1954 SCALE 1"=5280'

LESSEE CERTIFICATE

I, THE UNDERSIGNED, HEREBY CERTIFY THAT I AM THE LESSEE AS SHOWN HEREON. I HEREBY APPROVE THIS SURVEY AND PLAT.

TRACT O, AND ADL No. 230867

Reth A. Odden 11-15-12
 RETH A. ODDEN DATE
 1125 WEST TRUMPERTER SWAN DRIVE
 WASILLA, AK 99654

NOTARY'S ACKNOWLEDGEMENT

SUBSCRIBED AND SWORN TO BEFORE ME THIS 15th DAY OF November 2012
 FOR: *Reth A. Odden*
 LESSEE

NOTARY PUBLIC FOR ALASKA
 MY COMMISSION EXPIRES *with office*



LESSEE CERTIFICATE

I, THE UNDERSIGNED, HEREBY CERTIFY THAT I AM THE LESSEE AS SHOWN HEREON. I HEREBY APPROVE THIS SURVEY AND PLAT.

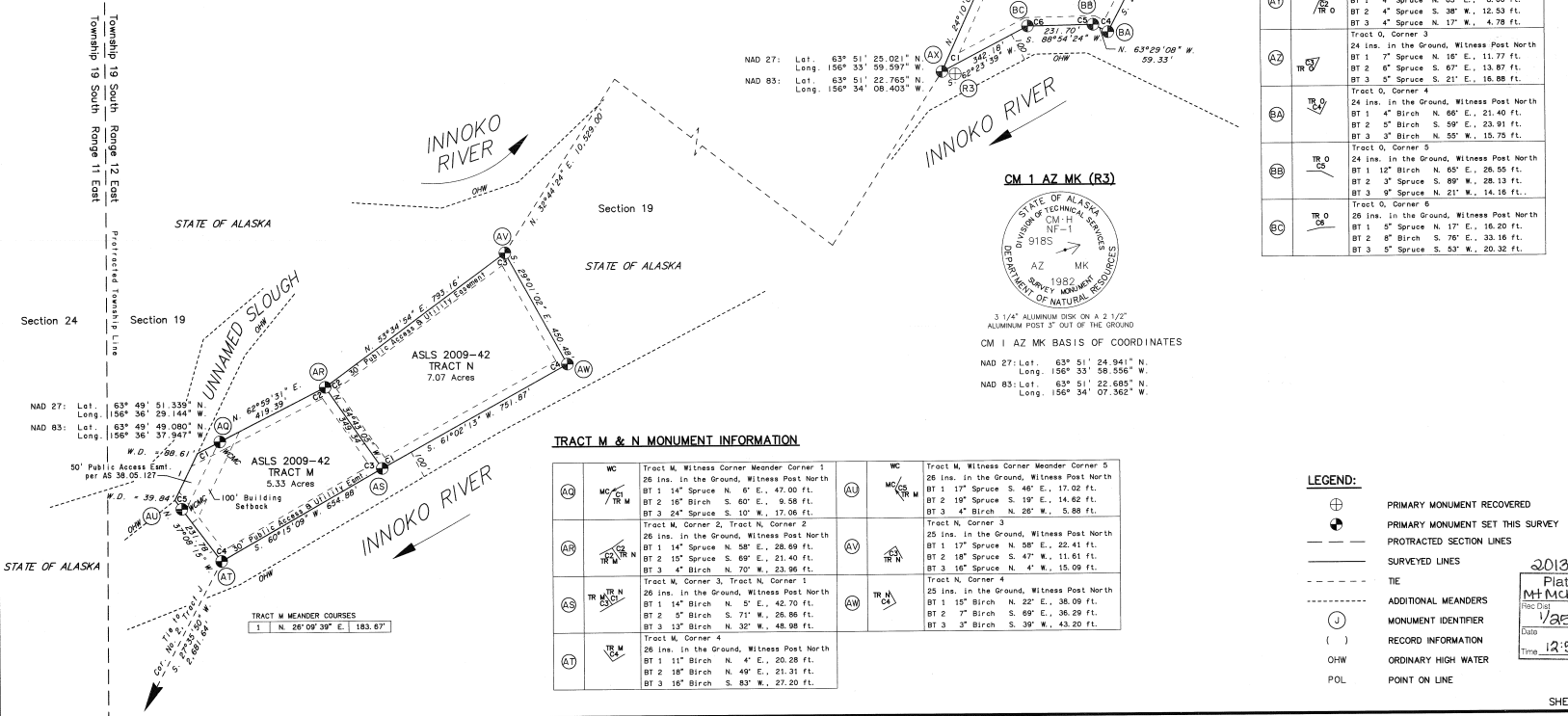
TRACT P, AND ADL No. 230908

Joseph F. Smith 10-17-12
 JOSEPH F. SMITH DATE
 11840 MARY AVE.
 ANCHORAGE, AK 99515

NOTARY'S ACKNOWLEDGEMENT

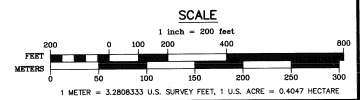
SUBSCRIBED AND SWORN TO BEFORE ME THIS 17th DAY OF October 2012
 FOR: *Joseph F. Smith*
 LESSEE

NOTARY PUBLIC FOR ALASKA
 MY COMMISSION EXPIRES *with office*



LEGEND:

- ⊕ PRIMARY MONUMENT RECOVERED
- ⊙ PRIMARY MONUMENT SET THIS SURVEY
- PROTRACTED SECTION LINES
- SURVEYED LINES
- - - - TIE
- ⊕ ADDITIONAL MEANDERS
- () MONUMENT IDENTIFIER
- RECORD INFORMATION
- OHW ORDINARY HIGH WATER
- POL POINT ON LINE



DATE OF SURVEY	Stanley E. Sears
Beginning	Global Positioning Services, Inc.
Ending	2803 Blueberry Rd Anchorage, Alaska 99503
STATE OF ALASKA	
DEPARTMENT OF MINING, LAND & WATER	
ALASKA STATE LAND SURVEY NO. 2009-42	
INNOKO RIVER REMOTE RECREATIONAL CABIN SITES	
WITHIN UNSURVEYED SECTIONS 24, 25, 26, 34 & 35, T. 19 S., R. 11 E. AND UNSURVEYED SECTIONS 8, 19 & 30, T. 19 S., R. 12 E. MATTEL RIVER MERIDIAN, ALASKA MT. MOORELY RECORDING DISTRICT	
DRAWN BY: LSV	APPROVAL RECOMMENDED
DATE: 12/2011	DATE: 11/15/12
SCALE: 1"=200'	CHECKED: S.E.S.
	DNR FILE NO. ASLS 20090042