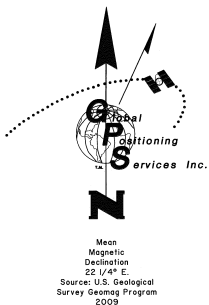
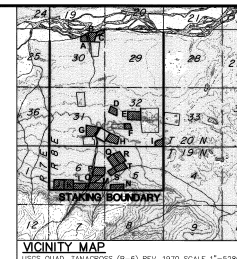


ROBERTSON RIVER REMOTE RECREATIONAL CABIN SITES

INDEX SHEET



NOTES

- THIS SURVEY WAS ACCOMPLISHED IN ACCORDANCE WITH AS 38.05.600, GSC 751, and RRCS 91 2007-22.
- THE BASIS OF BEARING FOR THIS PLAT WAS DETERMINED BY HIGH PRECISION GPS SURVEY, USING TRIMBLE R6 AND R8 CARRIER PHASE RECEIVERS, DIFFERENTIALLY CORRECTED AND PROCESSED USING TRIMBLE GEOMATICS OFFICE SOFTWARE.
- BASIS OF COORDINATES WAS AN NGS OPUS SOLUTION FOR TEMPORARY GPS BASE 1. A TIE WAS MADE TO THE CORNER OF TOWNSHIPS 19 AND 20 NORTH, RANGES 7 AND 8 EAST, USING HIGH PRECISION GPS METHODS. THIS CORNER (DESIGNATED AS R2 ON THIS PLAT) HAS BEEN USED AS THE PLAT BASIS OF COORDINATES.
- ALL BEARINGS SHOWN ARE TRUE BEARINGS AS ORIENTED TO THE BASIS OF BEARING AND DISTANCES SHOWN ARE REDUCED TO HORIZONTAL FIELD DISTANCES. BEARINGS AND DISTANCES SHOWN ON THIS PLAT ARE NAD 83. ALL BEARINGS ARE MEAN GEODETIC UNLESS OTHERWISE NOTED.
- THE ACCURACY OF THIS SURVEY IS GREATER THAN 1:5000.
- ALL PARCELS OF LAND OWNED BY THE STATE OF ALASKA, LOCATED WITHIN 50.00 FEET OF, OR INTERSECTED BY A SURVEYED OR PROTRACTED SECTION LINE, ARE SUBJECT TO A 50 FOOT (50') EASEMENT, ON EACH SIDE OF THE SECTION LINE, WHICH IS RESERVED TO THE STATE OF ALASKA FOR PUBLIC HIGHWAYS UNDER A.S.I.19.10.010.
- THE EXISTING LESSEES' CLAIM CORNERS WERE RECOVERED AND USED TO CONTROL THE LOCATION OF THE TRACT BOUNDARIES.
- THE NATURAL MEANDERS OF THE LINE OF ORDINARY HIGH WATER (OHW) FORM THE TRUE BOUNDS OF TRACTS A-C. AS SHOWN, IS FOR AREA COMPUTATIONS ONLY, WITH THE TRUE CORNERS BEING ON THE EXTENSION OF THE SIDELINES AND THEIR INTERSECTION WITH THE NATURAL MEANDERS.
- THERE IS A 100-FOOT BUILDING SETBACK FROM THE ORDINARY HIGH WATER (OHW) LINE OF ALL STREAMS AND ALL OTHER WATER BODIES DETERMINED TO BE PUBLIC OR NAVIGABLE.

RECOVERED MONUMENT INFORMATION

TR	TOP	BLM Witness Point, Sections 25 and 30 Recovered on Iron Post, 2 1/2 in. diam., with a Brass Cap, Firm, 8 ins. projecting BT 1 6" Birch N. 74° E., 28.5 ft. The SW bearing tree was not found.
R1	R7E R8E S29 S30 1964	
R2	T30N R7E R8E S36 S31 ST 56 T19N 1964	BLM Cor. of Tps. 19 & 20 N., Rs. 7 & 8 E. Recovered on Iron Post, 2 1/2 in. diam., with a Brass Cap, Firm, 8 ins. projecting BT 1 3" Spruce N. 42° E., 23.1 ft. BT 2 4" Spruce S. 63° E., 46.0 ft. BT 3 3" Spruce S. 70° W., 24.1 ft. The NW bearing tree was not found.
R3	T19N R7E R8E S12 S7 S13 S18 1964	BLM Cor. of Secs. 7, 12, 13 and 18 Recovered on Iron Post, 2 1/2 in. diam., with a Brass Cap, Firm, 10 ins. projecting There are no bearing trees.

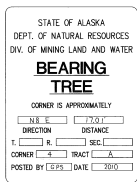
TYPICAL WITNESS POST

AN ORANGE FIBERGLASS REINFORCED CARSONITE POST, 6 FT. LONG SET AT A CARDINAL DIRECTION WITHIN 1 FT. OF ALL PRIMARY MONUMENTS



TYPICAL BEARING TREE TAG

A YELLOW 4 1/2" x 6" ALUMINUM TAG SET AT BREAST HEIGHT TREES ARE NOT SORBED

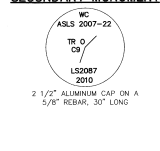


TYPICAL MONUMENTS SET THIS SURVEY

PRIMARY MONUMENT



SECONDARY MONUMENT

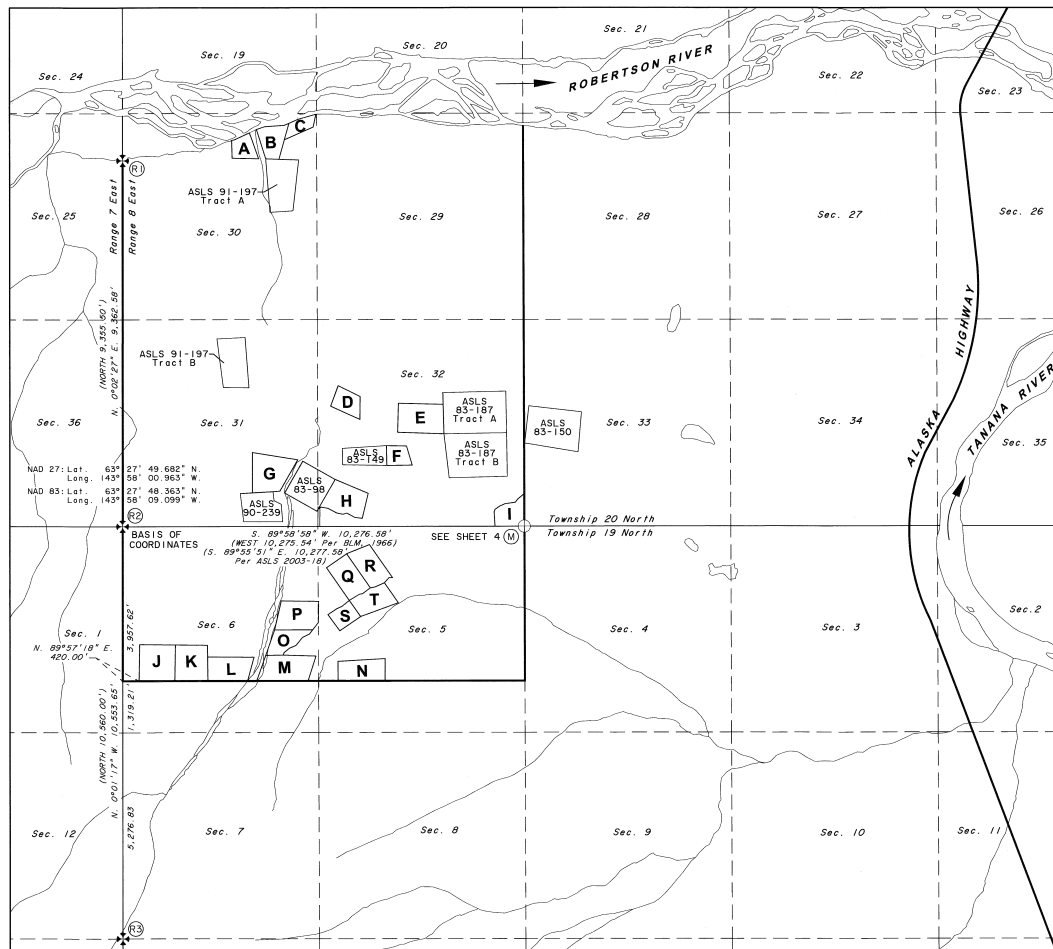


TYPICAL RECOVERED BLM MONUMENT



LEGEND:

- BLM PRIMARY MONUMENT RECOVERED
- PRIMARY MONUMENT RECOVERED
- PRIMARY MONUMENT SET THIS SURVEY
- SECONDARY MONUMENT SET
- PROTRACTED SECTION LINES
- SURVEYED LINES
- TIE
- MONUMENT IDENTIFIER
- RECORD INFORMATION



SHEET INDEX

TRACT	ADL No.	SHEET	TRACT	ADL No.	SHEET
A	ADL 418449	2	K	ADL 418470	4
B	ADL 418005	2	L	ADL 418007	4
C	ADL 418138	2	M	ADL 418081	5
D	ADL 418083	3	N	ADL 418264	5
E	ADL 418086	3	O	ADL 418080	5
F	ADL 418130	3	P	ADL 418119	5
G	ADL 418471	3	Q	ADL 418467	5
H	ADL 418253	3	R	ADL 418466	5
I	ADL 418062	5	S	ADL 418067	5
J	ADL 418168	4	T	ADL 418468	5

CERTIFICATE OF OWNERSHIP AND DEDICATION

I, THE UNDERSIGNED, HEREBY CERTIFY THAT I AM THE DIRECTOR, DIVISION OF MINING, LAND AND WATER AND THAT THE STATE OF ALASKA IS THE OWNER OF ASLS 2007-22, AS SHOWN HEREON. I HEREBY APPROVE THIS SURVEY AND PLAT FOR THE STATE OF ALASKA, AND DEDICATE FOR PUBLIC OR PRIVATE USE AS NOTED, ALL EASEMENTS, PUBLIC UTILITY AREAS, AND RIGHTS-OF-WAY AS SHOWN AND DESCRIBED HEREON.

DATE: June 17, 2011 DIRECTOR, DIVISION OF MINING, LAND AND WATER

NOTARY'S ACKNOWLEDGEMENT

SUBSCRIBED AND SWORN TO BEFORE ME THIS 17TH DAY

OF June, 2011.

FOR: Stanley E. Sears

NOTARY PUBLIC FOR ALASKA

MY COMMISSION EXPIRES June 17, 2014



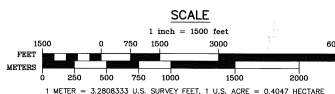
PLAT APPROVAL

THIS PLAT IS APPROVED BY THE COMMISSIONER OF THE DEPARTMENT OF NATURAL RESOURCES, IN ACCORDANCE WITH AS 40.15.

DATE: June 17, 2011

COMMISSIONER

BY APPROVAL OF THIS PLAT, THE COMMISSIONER OF THE DEPARTMENT OF NATURAL RESOURCES HEREBY ACCEPTS FOR PUBLIC USE AND PUBLIC PURPOSES THE REAL PROPERTY DEDICATED TO THE PUBLIC HEREON, INCLUDING EASEMENTS, RIGHTS-OF-WAY, ALLEYS AND ROADWAYS. THE ACCEPTANCE OF SUCH DEDICATED AREAS FOR PUBLIC USE AND PUBLIC PURPOSES DOES NOT OBLIGATE THE DEPARTMENT, ANY GOVERNING BODY, OR THE PUBLIC TO CONSTRUCT, OPERATE, MAINTAIN OR MANAGE IMPROVEMENTS.



DATE OF SURVEY: Beginning June 3, 2009 Ending July 26, 2009

STATE OF ALASKA

DEPARTMENT OF NATURAL RESOURCES

DIVISION OF MINING, LAND & WATER

ANCHORAGE, ALASKA

ALASKA STATE LAND SURVEY NO. 2007-22

ROBERTSON RIVER REMOTE RECREATIONAL CABIN SITES

CREATING TRACTS A THROUGH T

WITHIN UNSURVEYED SECTIONS 30, 31 & 32, T. 20 N., R. 8 E. & UNSURVEYED SECTIONS 5 & 6, T. 19 N., R. 8 E. COPPER RIVER MERIDIAN, ALASKA PARISHS RECORDING DISTRICT

DRAWN BY: LSV APPROVAL RECOMMENDED

DATE: 8/20/10 STATE PLATING SUPERVISOR

SCALE: 1" = 1500' CHECKED: LSV DNR FILE NO.

SHEET 1 OF 5

SURVEYOR'S CERTIFICATE
I HEREBY CERTIFY THAT I AM PROPERLY REGISTERED AND LICENSED TO PRACTICE LAND SURVEYING IN THE STATE OF ALASKA, THAT THIS PLAT REPRESENTS A SURVEY MADE BY ME OR UNDER MY DIRECT SUPERVISION, THAT THE MONUMENTS SHOWN HEREON ACTUALLY EXIST AS DESCRIBED, AND THAT ALL DIMENSIONS AND OTHER DETAILS ARE CORRECT.

DATE: June 17, 2011
REGISTERED LAND SURVEYOR NO. LS-2087



FAIRBANKS 2011-59

GEODETIC TIES TO R2

MON	BEARING	DISTANCE
B	S. 18° 13' 36" W.	10,506.57'
D	S. 22° 30' 27" W.	11,975.26'

TRACT A MEANDER COURSES

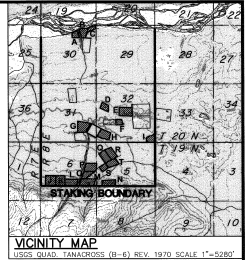
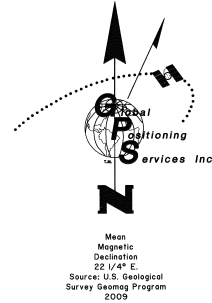
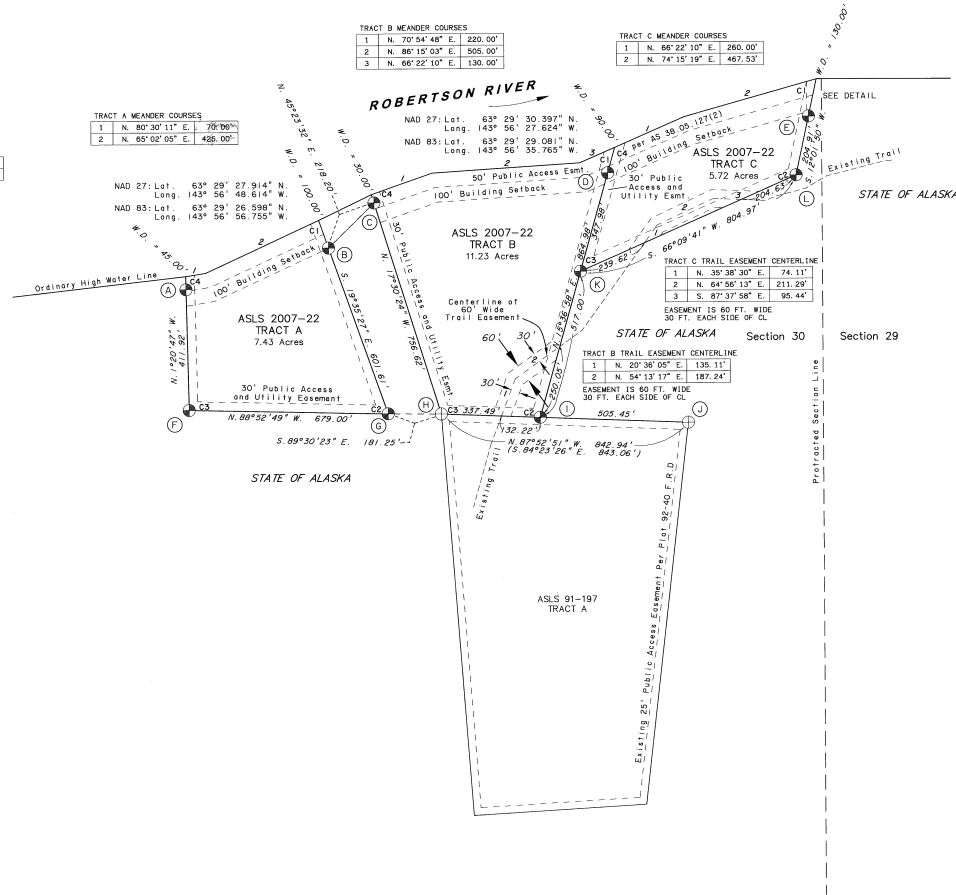
1	N. 80° 30' 11" E.	709.06'
2	N. 65° 02' 05" E.	426.00'

TRACT C MEANDER COURSES

1	N. 70° 54' 48" E.	220.00'
2	N. 86° 15' 03" E.	505.00'
3	N. 66° 22' 10" E.	130.00'

TRACT A MEANDER COURSES

NAD 27: Lat.	63° 29' 27.914" N.
Long.	143° 56' 48.614" W.
NAD 83: Lat.	63° 29' 26.598" N.
Long.	143° 56' 56.755" W.



THERE IS NO LESSEE FOR TRACT A, ADL No. 418469.

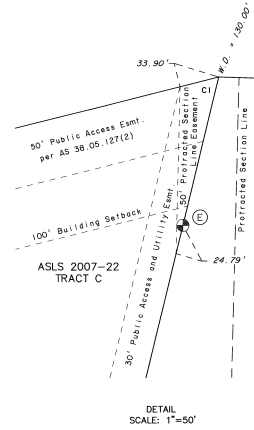
LESSEE CERTIFICATE
 I, THE UNDERSIGNED, HEREBY CERTIFY THAT I AM THE LESSEE AS SHOWN HEREON. I HEREBY APPROVE THIS SURVEY AND PLAT.
 TRACT B, AND ADL No. 418995
 DATE: 4/12/11
 MARK LINK
 P.O. BOX 39255
 MINNICK, AK 99539

NOTARY'S ACKNOWLEDGEMENT
 SUBSCRIBED AND SWORN TO BEFORE ME THIS 12 DAY OF April, 2011
 FOR: Mark Link
 APPLICANT
 Anna Smith
 NOTARY PUBLIC FOR ALASKA
 MY COMMISSION EXPIRES 11/15/11



LESSEE CERTIFICATE
 I, THE UNDERSIGNED, HEREBY CERTIFY THAT I AM THE LESSEE AS SHOWN HEREON. I HEREBY APPROVE THIS SURVEY AND PLAT.
 TRACT C, AND ADL No. 418138
 DATE: Feb. 22, 2011
 AUDUN ENDESTAD
 P.O. BOX 81591
 FAIRBANKS, AK 99708

NOTARY'S ACKNOWLEDGEMENT
 SUBSCRIBED AND SWORN TO BEFORE ME THIS 22 DAY OF February, 2011
 FOR: Audun Endestad
 APPLICANT
 James R. Pankratz
 NOTARY PUBLIC FOR ALASKA
 MY COMMISSION EXPIRES 1/15/11

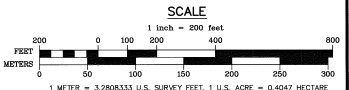


MONUMENT INFORMATION

MONUMENT	DESCRIPTION	MONUMENT	DESCRIPTION	MONUMENT	DESCRIPTION
(A)	WC MC TR A Tract A, Witness Corner Meander Corner 4 24 ins. in the Ground, Witness Post North BT 1 9" Spruce N. 85° E., 17.01 ft. BT 2 3" Spruce S. 34° W., 8.60 ft. BT 3 8" Spruce N. 84° W., 24.82 ft.	(E)	WC MC TR C Tract C, Corner 1 22 ins. in the Ground, Witness Post South BT 1 6" Spruce N. 45° E., 7.55 ft. BT 2 4" Spruce S. 48° E., 12.45 ft. BT 3 6" Spruce N. 45° W., 8.13 ft.	(I)	TR B / C2 Tract B, Corner 2 22 ins. in the Ground, Witness Post North BT 1 3" Spruce S. 74° E., 9.68 ft. BT 2 3" Spruce S. 10° W., 12.47 ft. BT 3 4" Spruce S. 74° W., 15.02 ft.
(B)	WC MC TR A Tract A, Witness Corner Meander Corner 1 24 ins. in the Ground, Witness Post North BT 1 7" Spruce S. 34° E., 8.84 ft. BT 2 4" Spruce S. 85° W., 8.37 ft. BT 3 4" Spruce N. 4° W., 13.88 ft.	(F)	TR A C3 Tract A, Corner 3 22 ins. in the Ground, Witness Post North BT 1 3" Spruce N. 61° E., 6.18 ft. BT 2 3" Spruce SOUTH, 14.37 ft. BT 3 3" Spruce N. 81° W., 17.62 ft.	(J)	KALEN TR A C2 1291 4603-S ASLS 91-197, Tract A, Corner 2 Recovered on Alum. Post, 2 1/2 in. diam., w/ on Alum. Cop. Firm, 10 ins. projecting BT 1 4" Spruce N. 48° E., 23.12 ft. BT 2 4" Spruce S. 2° E., 14.16 ft. BT 3 4" Spruce WEST, 7.47 ft.
(C)	WC MC TR B Tract B, Corner 4 24 ins. in the Ground, Witness Post North BT 1 6" Spruce S. 25° E., 9.28 ft. BT 2 8" Spruce S. 54° W., 9.21 ft. BT 3 7" Spruce N. 50° W., 7.42 ft.	(G)	TR A C1 Tract A, Corner 2 22 ins. in the Ground, Witness Post North BT 1 3" Spruce N. 33° E., 6.00 ft. BT 2 3" Spruce S. 12° W., 13.89 ft. BT 3 3" Spruce N. 50° W., 19.96 ft.	(K)	TR B C3 Tract C, Corner 3 22 ins. in the Ground, Witness Post North BT 1 4" Spruce N. 20° E., 11.26 ft. BT 2 3" Spruce S. 9° E., 10.90 ft. BT 3 3" Spruce S. 22° W., 9.85 ft.
(D)	WC MC TR C Tract C, Witness Corner Meander Corner 4 22 ins. in the Ground, Witness Post North BT 1 7" Birch N. 25° E., 13.40 ft. BT 2 11" Birch S. 11° W., 20.80 ft. BT 3 8" Birch N. 82° W., 14.20 ft.	(H)	KALEN TR A C1 1891 4603-S ASLS 91-197, Tr. A, Cor. 1, Tr. B, Cor. 3 Recovered on Alum. Post, 2 1/2 in. diam., with on Alum. Cop. Firm, 2 ins. projecting BT 1 7" Spruce N. 65° E., 21.45 ft. BT 2 6" Spruce S. 8° E., 27.74 ft. BT 3 9" Spruce N. 34° W., 25.10 ft.	(L)	TR C C1 Tract C, Corner 2 24 ins. in the Ground, Witness Post North BT 1 3" Spruce N. 2° E., 12.96 ft. BT 2 3" Spruce S. 40° E., 7.91 ft. BT 3 3" Spruce S. 27° W., 22.74 ft.

LEGEND:

- ⊕ BLM PRIMARY MONUMENT RECOVERED
- ⊕ PRIMARY MONUMENT RECOVERED
- ⊕ PRIMARY MONUMENT SET THIS SURVEY
- SECONDARY MONUMENT SET
- - - PROTRACTED SECTION LINES
- SURVEYED LINES
- - - TIE
- ⊙ MONUMENT IDENTIFIER
- () RECORD INFORMATION



DATE OF SURVEY	Stanley E. Seare
Beginning	June 1, 2009
Ending	July 26, 2010
STATE OF ALASKA	
DEPARTMENT OF NATURAL RESOURCES	
DIVISION OF MINING, LAND & WATER	
ALASKA STATE LAND SURVEY NO. 2007-22	
ROBERTSON RIVER REMOTE RECREATIONAL CABIN SITES CREATING TRACTS A THROUGH I	
WITHIN UNSURVEYED SECTIONS 30, 31 & 32, T. 20 N., R. 8 E. & UNSURVEYED SECTIONS 5 & 6, T. 19 N., R. 8 E. COPPER RIVER MERIDIAN, ALASKA FAIRBANKS RECORDING DISTRICT	
DRAWN BY: LSV	APPROVAL RECOMMENDED
DATE: 8/2010	DATE: 6/12/11
SCALE: 1" = 200'	CHECKED: DNR FILE NO. ASLS 20070022

FAIRBANKS 2011-59

SHEET 2 OF 5

LESSEE CERTIFICATE
 I, THE UNDERSIGNED, HEREBY CERTIFY THAT I AM THE LESSEE AS SHOWN HEREON. I HEREBY APPROVE THIS SURVEY AND PLAT.

TRACT D, AND ADL No. 418083
 Kristin M. Ann
 DATE 23 Feb 2011
 KRISTIN M. ANN
 1577 FESTIVAL DRIVE
 FAIRBANKS, AK 99709

NOTARY'S ACKNOWLEDGEMENT
 SUBSCRIBED AND SWORN TO BEFORE ME THIS 23 DAY OF FEBRUARY, 2011.
 FOR: Kristin M. Ann
 APPLICANT
 NOTARY PUBLIC FOR ALASKA
 MY COMMISSION EXPIRES WITH OFFICE

LESSEE CERTIFICATE
 I, THE UNDERSIGNED, HEREBY CERTIFY THAT I AM THE LESSEE AS SHOWN HEREON. I HEREBY APPROVE THIS SURVEY AND PLAT.

TRACT E, AND ADL No. 418088
 JOHN E. SPOOK
 DATE 17 MAR 2011
 JOHN E. SPOOK
 1355 OPPORTUNITY WAY
 FAIRBANKS, AK 99709

NOTARY'S ACKNOWLEDGEMENT
 SUBSCRIBED AND SWORN TO BEFORE ME THIS 17 DAY OF MARCH, 2011.
 FOR: John E. Spook
 APPLICANT
 NOTARY PUBLIC FOR ALASKA
 MY COMMISSION EXPIRES WITH OFFICE

LESSEE CERTIFICATE
 I, THE UNDERSIGNED, HEREBY CERTIFY THAT I AM THE LESSEE AS SHOWN HEREON. I HEREBY APPROVE THIS SURVEY AND PLAT.

TRACT F, AND ADL No. 418130
 Raymond F. Harber
 DATE 15 March 2011
 RAYMOND F. HARBER
 6315 ABRAHAM ROAD
 FAIRBANKS, AK 99709

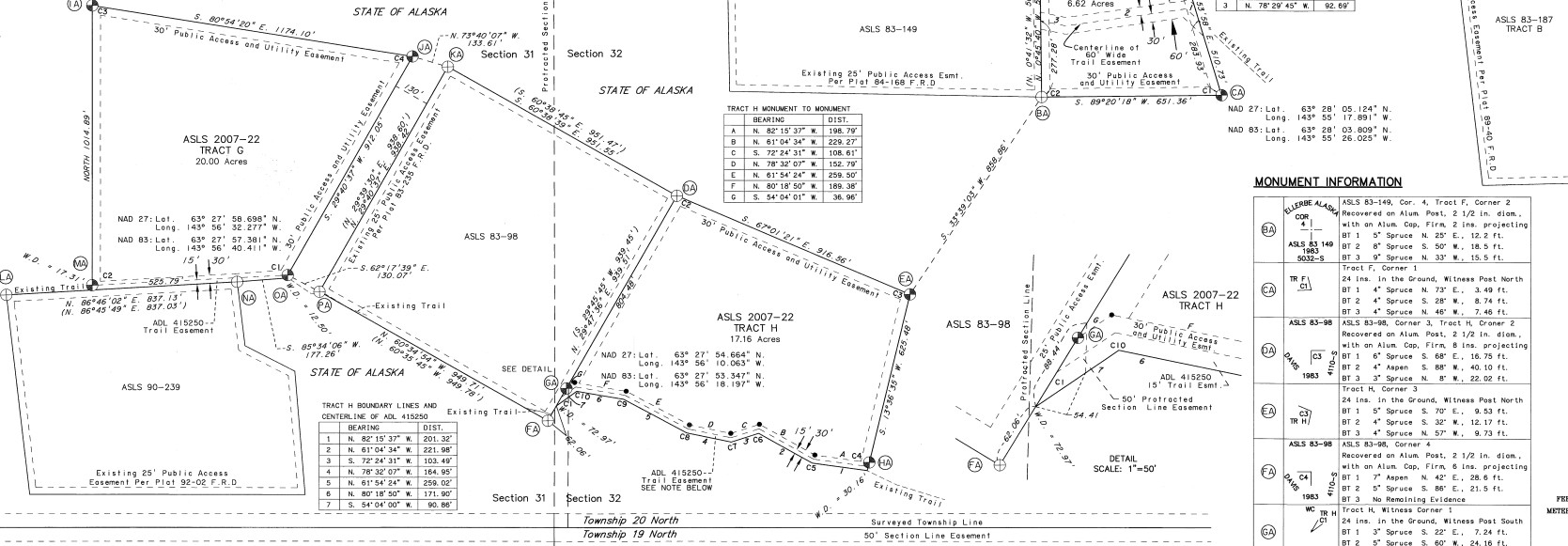
NOTARY'S ACKNOWLEDGEMENT
 SUBSCRIBED AND SWORN TO BEFORE ME THIS 15 DAY OF MARCH, 2011.
 FOR: Raymond F. Harber
 APPLICANT
 NOTARY PUBLIC FOR ALASKA
 MY COMMISSION EXPIRES WITH OFFICE

LESSEE CERTIFICATE
 I, THE UNDERSIGNED, HEREBY CERTIFY THAT I AM THE LESSEE AS SHOWN HEREON. I HEREBY APPROVE THIS SURVEY AND PLAT.

TRACT H, AND ADL No. 418253
 MICHAEL L. WARNER
 DATE 2
 MICHAEL L. WARNER
 P.O. BOX 230985
 ANCHORAGE, AK 99523

NOTARY'S ACKNOWLEDGEMENT
 SUBSCRIBED AND SWORN TO BEFORE ME THIS 2 DAY OF MARCH, 2011.
 FOR: MICHAEL L. WARNER
 APPLICANT
 NOTARY PUBLIC FOR ALASKA
 MY COMMISSION EXPIRES WITH OFFICE

THERE IS NO LESSEE FOR TRACT G, ADL No. 418471.



GEODETIC TIES TO R2

MON.	BEARING	DISTANCE
Q	S. 65°45'33\" W.	6.656.35'
V	S. 69°10'44\" W.	8.777.02'
CA	S. 78°02'41\" W.	7.574.93'
DA	S. 77°11'40\" W.	4.133.18'
GA	S. 84°15'48\" W.	5.065.36'

TRACT H MONUMENT TO MONUMENT

BEARING	DIST.
A N. 82°15'37\" W.	198.79'
B N. 81°04'34\" W.	229.27'
C S. 72°24'31\" W.	108.61'
D N. 78°32'07\" W.	152.79'
E N. 61°54'24\" W.	259.50'
F N. 80°18'50\" W.	189.36'
G S. 54°04'01\" W.	36.96'

TRACT H BOUNDARY LINES AND CENTERLINE OF ADL 415250

BEARING	DIST.
1 N. 82°15'37\" W.	201.32'
2 N. 61°04'34\" W.	221.98'
3 S. 72°24'31\" W.	103.49'
4 N. 78°32'07\" W.	154.95'
5 N. 61°54'24\" W.	259.00'
6 N. 80°18'50\" W.	171.90'
7 S. 54°04'00\" W.	90.86'

MONUMENT INFORMATION

LA	6280-S ASLS 90-239	ASLS 90-239, Corner 4 Recovered on Alum. Post, 2 1/2 in. diam., with an Alum. Cop. Firm, 8 ins. projecting BT 1 4\" Spruce N. 51\" E., 6.96 ft. BT 2 3\" Spruce S. 68\" E., 7.13 ft. BT 3 3\" Spruce S. 11\" W., 13.24 ft.
MA	1990 WC	TRACT G, Witness Corner 1 24 ins. in the Ground, Witness Post North BT 1 19\" Spruce N. 74\" E., 23.86 ft. BT 2 19\" Spruce S. 73\" W., 5.49 ft. BT 3 19\" Spruce N. 55\" W., 26.18 ft.
NA	ASLS 90-239	ASLS 83-98, Corner 2 Recovered on Alum. Post, 2 1/2 in. diam., w/An Alum. Cop. Firm, 10 ins. projecting All the record bearing trees have blown over.

MONUMENT INFORMATION

WA	6280-S ASLS 90-239	ASLS 90-239, Corner 5 Recovered on Alum. Post, 2 1/2 in. diam., with an Alum. Cop. Firm, 6 ins. projecting BT 1 14\" Spruce N. 19\" E., 15.00 ft. BT 2 4\" Spruce S. 35\" E., 15.06 ft. BT 3 4\" Spruce S. 34\" W., 12.91 ft.
YA	1990 WC	TRACT G, Witness Corner 2 24 ins. in the Ground, Witness Post North BT 1 3\" Spruce N. 89\" E., 9.34 ft. BT 2 4\" Spruce S. 85\" W., 17.64 ft. BT 3 4\" Spruce N. 8\" W., 9.88 ft.
ZA	ASLS 83-98	ASLS 90-239, Corner 5 Recovered on Alum. Post, 2 1/2 in. diam., with an Alum. Cop. Firm, 10 ins. projecting BT 1 14\" Spruce N. 62\" E., 28.71 ft. BT 2 4\" Spruce S. 70\" E., 19.62 ft. BT 3 11\" Spruce S. 72\" W., 13.16 ft.

MONUMENT INFORMATION

AA	6280-S ASLS 83-98	ASLS 83-98, Corner 1 Recovered on Alum. Post, 2 1/2 in. diam., w/An Alum. Cop. Firm, 10 ins. projecting BT 1 14\" Spruce N. 62\" E., 28.71 ft. BT 2 4\" Spruce S. 70\" E., 19.62 ft. BT 3 11\" Spruce S. 72\" W., 13.16 ft.
BA	1990 WC	TRACT G, Witness Corner 1 24 ins. in the Ground, Witness Post North BT 1 15\" Spruce N. 40\" E., 18.83 ft. BT 2 14\" Spruce S. 43\" W., 28.19 ft. BT 3 10\" Spruce N. 43\" W., 17.08 ft.
CA	ASLS 83-98	ASLS 83-98, Corner 1 Recovered on Alum. Post, 2 1/2 in. diam., w/An Alum. Cop. Firm, 10 ins. projecting BT 1 14\" Spruce N. 62\" E., 28.71 ft. BT 2 4\" Spruce S. 70\" E., 19.62 ft. BT 3 11\" Spruce S. 72\" W., 13.16 ft.

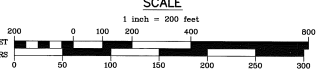
- LEGEND:**
- ⊗ BLM PRIMARY MONUMENT RECOVERED
 - ⊕ PRIMARY MONUMENT RECOVERED
 - ⊙ PRIMARY MONUMENT SET THIS SURVEY
 - ⊖ SECONDARY MONUMENT SET
 - PROTRACTED SECTION LINES
 - SURVEYED LINES
 - TIE
 - ⊙ MONUMENT IDENTIFIER
 - () RECORD INFORMATION

MONUMENT INFORMATION

BA	ELBERG ALASKA COR 1	ASLS 83-149, Cor. 4, Tract F, Corner 2 Recovered on Alum. Post, 2 1/2 in. diam., with an Alum. Cop. Firm, 2 ins. projecting BT 1 5\" Spruce N. 25\" E., 12.2 ft. BT 2 8\" Spruce S. 50\" W., 18.5 ft. BT 3 9\" Spruce N. 33\" W., 15.3 ft.
CA	ASLS 83-149	TRACT F, Corner 1 24 ins. in the Ground, Witness Post North BT 1 4\" Spruce N. 72\" E., 3.49 ft. BT 2 4\" Spruce S. 28\" W., 8.74 ft. BT 3 4\" Spruce N. 46\" W., 7.48 ft.
DA	ASLS 83-98	ASLS 83-98, Corner 3, Tract H, Corner 2 Recovered on Alum. Post, 2 1/2 in. diam., with an Alum. Cop. Firm, 8 ins. projecting BT 1 6\" Spruce S. 68\" E., 16.75 ft. BT 2 4\" Aspen S. 88\" W., 40.10 ft. BT 3 3\" Spruce N. 8\" W., 22.92 ft.
EA	ASLS 83-98	TRACT H, Corner 3 24 ins. in the Ground, Witness Post North BT 1 5\" Spruce S. 70\" E., 9.53 ft. BT 2 4\" Spruce S. 30\" W., 12.17 ft. BT 3 4\" Spruce N. 57\" W., 9.73 ft.
FA	ASLS 83-98	ASLS 83-98, Corner 4 Recovered on Alum. Post, 3 1/2 in. diam., with an Alum. Cop. Firm, 6 ins. projecting BT 1 7\" Aspen N. 42\" E., 28.6 ft. BT 2 2\" Spruce S. 86\" E., 21.5 ft. BT 3 - No Remaining Evidence
GA	ASLS 83-149	TRACT H, Witness Corner 1 24 ins. in the Ground, Witness Post South BT 1 3\" Spruce S. 22\" E., 7.24 ft. BT 2 5\" Spruce S. 60\" W., 24.18 ft. BT 3 3\" Spruce N. 19\" W., 23.73 ft.
HA	ASLS 83-98	TRACT H, Witness Corner 4 24 ins. in the Ground, Witness Post North BT 1 6\" Birch N. 89\" E., 14.30 ft. BT 2 5\" Aspen S. 35\" E., 8.29 ft. BT 3 4\" Spruce N. 32 1/2\" W., 7.91 ft.

MONUMENT INFORMATION

TA	TRACT D, Corner 1	24 ins. in the Ground, Witness Post North BT 1 5\" Spruce N. 34\" E., 15.44 ft. BT 2 5\" Spruce S. 21\" E., 7.03 ft. BT 3 5\" Spruce N. 72 1/2\" W., 11.99 ft.
UA	TRACT D, Corner 2	23 ins. in the Ground, Witness Post North BT 1 1\" Spruce N. 89\" E., 9.68 ft. BT 2 4\" Spruce S. 45\" E., 9.68 ft. BT 3 4\" Spruce S. 80\" W., 34.25 ft.
VA	TRACT D, Corner 4	24 ins. in the Ground, Witness Post North BT 1 4\" Spruce N. 54\" E., 12.39 ft. BT 2 5\" Spruce S. 77\" E., 10.77 ft. BT 3 4\" Spruce WEST, 6.65 ft.
WA	1988 ASLS 83-187	24 ins. in the Ground, Witness Post North BT 1 4\" Spruce N. 14\" E., 17.55 ft. BT 2 5\" Spruce S. 67\" E., 23.75 ft. BT 3 4\" Spruce S. 8\" E., 16.95 ft. BT 3 5\" Spruce N. 30\" W., 13.70 ft.
XA	1988 ASLS 83-187	24 ins. in the Ground, Witness Post North BT 1 4\" Aspen N. 27\" E., 27.20 ft. BT 2 4\" Spruce S. 42\" E., 17.61 ft. BT 3 4\" Spruce N. 25\" W., 22.28 ft.
YA	1988 ASLS 83-187	24 ins. in the Ground, Witness Post North BT 1 4\" Aspen N. 33\" E., 13.54 ft. BT 2 4\" Spruce S. 60\" W., 6.45 ft. BT 3 4\" Spruce S. 28\" W., 39.22 ft.
ZA	1983 ASLS 5032-S	TRACT E, Corner 3 22 ins. in the Ground, Witness Post North BT 1 5\" Spruce N. 80\" E., 6.9 ft. BT 2 4\" Spruce S. 15\" W., 12.1 ft.
AA	1983 ASLS 5032-S	TRACT F, Corner 1 24 ins. in the Ground, Witness Post North BT 1 4\" Aspen N. 33\" E., 13.54 ft. BT 2 4\" Spruce S. 60\" W., 6.45 ft. BT 3 4\" Spruce S. 28\" W., 39.22 ft.
BA	1983 ASLS 5032-S	TRACT H, Corner 3 24 ins. in the Ground, Witness Post North BT 1 5\" Spruce S. 70\" E., 9.53 ft. BT 2 4\" Spruce S. 30\" W., 12.17 ft. BT 3 4\" Spruce N. 57\" W., 9.73 ft.
CA	1983 ASLS 5032-S	TRACT H, Witness Corner 4 24 ins. in the Ground, Witness Post North BT 1 6\" Birch N. 89\" E., 14.30 ft. BT 2 5\" Aspen S. 35\" E., 8.29 ft. BT 3 4\" Spruce N. 32 1/2\" W., 7.91 ft.



DATE OF SURVEY
 Beginning June 1, 2009
 Ending July 26, 2010

APPROVAL RECOMMENDED
 STATE MINE PLATING SUPERVISOR
 DATE

DEPARTMENT OF NATURAL RESOURCES
DIVISION OF MINING, LAND & WATER
 ANCHORAGE, ALASKA

ALASKA STATE LAND SURVEY NO. 2007-22
 ROBERTSON TOWN REMOTE RECREATIONAL CABIN SITES
 CREATING TRACTS A THROUGH T

WITHIN UNSURVEYED SECTIONS 30, 31 & 32, T. 20 N., R. 8 E. & UNSURVEYED SECTIONS 30, 31 & 32, T. 19 N., R. 8 E. COPPER RIVER MERIDIAN, ALASKA
 FAIRBANKS RECORDING DISTRICT

DRAWN BY: LSV
DATE: 9/2/10
SCALE: 1" = 200'

APPROVED: Stanley E. Sears
 STATE MINE PLATING SUPERVISOR
 DATE

CHECKED: s.e.s.
DNF FILE NO.: ASLS 20070022

FAIRBANKS 2011-59

SHEET 3 OF 5

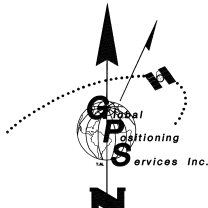
LESSEE CERTIFICATE

I, THE UNDERSIGNED, HEREBY CERTIFY THAT I AM THE LESSEE AS SHOWN HEREON. I HEREBY APPROVE THIS SURVEY AND PLAT.

TRACT I, AND ADL No. 418082
 DATE 4/25/2011
 MOLLY A. TIMM
 P.O. BOX 730
 TOK, AK 99780

NOTARY'S ACKNOWLEDGEMENT
 SUBSCRIBED AND SWORN TO BEFORE ME THIS 25th DAY OF April, 2011
 FOR: Molly A. Timm
 APPLICANT

NOTARY PUBLIC FOR ALASKA
 MY COMMISSION EXPIRES with office



Mean
 Magnetic
 Declination
 22.1/4° E
 Source: U.S. Geological
 Survey Geomag Program
 2009

LESSEE CERTIFICATE

I, THE UNDERSIGNED, HEREBY CERTIFY THAT I AM THE LESSEE AS SHOWN HEREON. I HEREBY APPROVE THIS SURVEY AND PLAT.

TRACT J, AND ADL No. 418168
 DATE March 15, 2011
 CAROL L. MCINTYRE
 6315 ABRAHAM ROAD
 FAIRBANKS, AK 99709

NOTARY'S ACKNOWLEDGEMENT
 SUBSCRIBED AND SWORN TO BEFORE ME THIS 15th DAY OF MARCH, 2011

FOR: CAROL L. MCINTYRE
 APPLICANT
 NOTARY PUBLIC FOR ALASKA
 MY COMMISSION EXPIRES with office



LESSEE CERTIFICATE

I, THE UNDERSIGNED, HEREBY CERTIFY THAT I AM THE LESSEE AS SHOWN HEREON. I HEREBY APPROVE THIS SURVEY AND PLAT.

TRACT L, AND ADL No. 418097
 DATE 3/17/2011
 VINCENT L. WATERS
 P.O. BOX 750817
 FAIRBANKS, AK 99775

NOTARY'S ACKNOWLEDGEMENT
 SUBSCRIBED AND SWORN TO BEFORE ME THIS 17th DAY OF MARCH, 2011

FOR: Vincent Waters
 APPLICANT
 NOTARY PUBLIC FOR ALASKA
 MY COMMISSION EXPIRES with office



THERE IS NO LESSEE FOR TRACT K, ADL No. 418470.

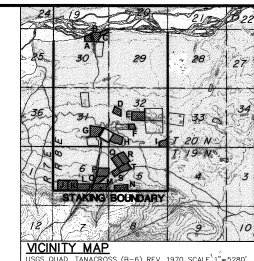
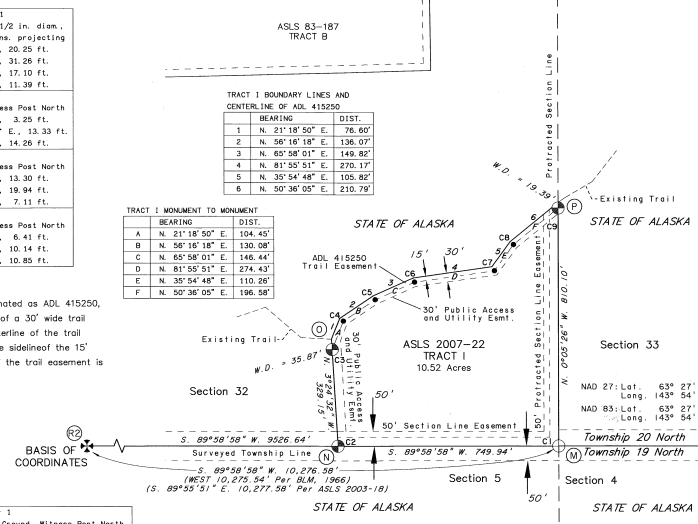
MONUMENT INFORMATION

(M)	ASLS 2003-18 12CN S32 533 596 S51 54 T18 4488-S 2003	Sec. Cor., Tract I, Corner 1 Recovered an Alum Post, 2 1/2 in. diam., 3 1/4" Alum. Cap, Firm, 4 in. projecting BT 1 4" Spruce N. 54° E., 20.25 ft. BT 2 6" Spruce S. 53° E., 31.26 ft. BT 3 4" Spruce S. 29° W., 17.10 ft. BT 4 6" Spruce N. 10° W., 11.39 ft.
(N)	TR I LSE	Tract I, Corner 2 24 ins. in the Ground, Witness Post North BT 1 4" Spruce N. 80° E., 3.25 ft. BT 2 4" Spruce S. 36 1/2° E., 13.33 ft. BT 3 3" Spruce N. 37° W., 14.26 ft.
(O)	WC TR I LSE	Tract I, Witness Corner 3 24 ins. in the Ground, Witness Post North BT 1 3" Spruce N. 60° E., 13.30 ft. BT 2 4" Spruce S. 16° W., 19.94 ft. BT 3 3" Spruce N. 77° W., 7.11 ft.
(D)	WC TR I LSE	24 ins. in the Ground, Witness Post North BT 1 3" Spruce N. 57° E., 6.41 ft. BT 2 13" Aspen S. 35° E., 10.14 ft. BT 3 6" Spruce N. 88° W., 10.85 ft.

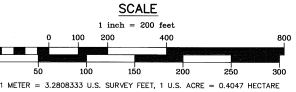
NOTE: The centerline of the existing trail, designated as ADL 415250, was located and used to control the centerline of a 30' wide trail easement. The Tract boundary is along the centerline of the trail easement. The monuments were offset along the sideline of the 15' trail easement half-width. The 15' half-width of the trail easement is dedicated hereon.

MONUMENT INFORMATION

(JA)	TR J LSE	Tract J, Corner 2 24 ins. in the Ground, Witness Post North BT 1 3" Spruce S. 81° E., 13.32 ft. BT 2 3" Spruce S. 31° W., 13.27 ft. BT 3 3" Spruce N. 43° W., 14.84 ft.	(VA)	TR J LSE	Tract J, Corner 1 24 ins. in the Ground, Witness Post North BT 1 3" Spruce N. 10° E., 34.50 ft. BT 2 3" Spruce N. 69° E., 23.60 ft. BT 3 3" Spruce S. 47° W., 20.64 ft.
(KA)	TR K LSE	Tract K, Corner 3 21 ins. in the Ground, Witness Post South BT 1 4" Spruce S. 81° E., 25.12 ft. BT 2 3" Spruce S. 9° E., 3.92 ft. BT 3 3" Spruce S. 85° W., 2.90 ft.	(WA)	TR J TR K LSE	Tract J, Corner 4, Tract K, Corner 1 24 ins. in the Ground, Witness Post North BT 1 3" Spruce N. 71° E., 49.13 ft. BT 2 4" Spruce S. 74° W., 14.89 ft. BT 3 3" Spruce S. 79° W., 37.15 ft.
(LA)	TR L LSE	Tract L, Corner 3 20 ins. in the Ground, Rock Collar 2 ft. diam., 8 ins. high, Witness Post West BT 1 3" Spruce N. 59° E., 32.32 ft. BT 2 3" Spruce S. 47° E., 16.76 ft. BT 3 3" Spruce N. 87° W., 13.59 ft.	(XA)	TR K TR L LSE	Tract K, Corner 4, Tract L, Corner 2 20 ins. in the Ground, Rock Collar 2 ft. diam., 7" High, Witness Post North BT 1 6" Spruce N. 40° E., 19.08 ft. BT 2 3" Spruce S. 8° E., 20.85 ft. BT 3 5" Spruce S. 80° W., 46.52 ft.
(MA)	TR L LSE	Tract L, Corner 4 14 ins. in the Ground, Rock Collar 2 ft. diam., 10 ins. high, Witness Post North BT 1 6" Spruce N. 70° E., 14.46 ft. BT 2 7" Spruce S. 47° E., 16.76 ft. BT 3 10" Spruce N. 44° W., 3.83 ft.	(YA)	TR L LSE	Tract L, Corner 1 24 ins. in the Ground, Witness Post North BT 1 10" Spruce N. 53° E., 20.45 ft. BT 2 6" Spruce N. 61° W., 23.04 ft. BT 3 6" Spruce N. 11 1/2° W., 29.53 ft.



- LEGEND:**
- ⊕ BLM PRIMARY MONUMENT RECOVERED
 - ⊕ PRIMARY MONUMENT RECOVERED
 - ⊕ PRIMARY MONUMENT SET THIS SURVEY
 - SECONDARY MONUMENT SET
 - PROTRACTED SECTION LINES
 - SURVEYED LINES
 - ⊙ TI
 - MONUMENT IDENTIFIER
 - () RECORD INFORMATION



DATE OF SURVEY Beginning June 1, 2009 Ending July 26, 2010	Stanley E. Sears Global Positioning Services, Inc. 2603 Blueberry Rd. Anchorage, Alaska 99503
STATE OF ALASKA DEPARTMENT OF NATURAL RESOURCES DIVISION OF MINING, LAND & WATER ANCHORAGE, ALASKA	
ALASKA STATE LAND SURVEY NO. 2007-22	
ROBERTSON RIVER REMOTE RECREATIONAL CABIN SITES CREATING TRACTS A THROUGH I	
WITHIN UNSURVEYED SECTIONS 30, 31 & 32, T. 20 N., R. 8 E. & UNSURVEYED SECTIONS 5 & 6, T. 19 N., R. 8 E. COPPER RIVER MERIDIAN, ALASKA (FAIRBANKS RECORDING DISTRICT)	
DRAWN BY: LSV	APPROVAL RECOMMENDED
DATE: 8/2010	DATE: <u>8/2010</u>
SCALE: 1" = 200'	CHECKED BY: <u>William S. Sears</u> STATEWIDE PLATING SUPERVISOR
	DNR FILE NO. ASLS 20070022

FAIRBANKS 2011-59

SHEET 4 OF 5

MONUMENT INFORMATION

Table listing monument information for various tracts, including bearings, distances, and monument types (e.g., TR M, TR W, TR O, TR P).

Table listing monument information for various tracts, including bearings, distances, and monument types (e.g., TR N, TR S, TR E, TR W).

Table titled 'GEODETTIC TIES TO R2' listing monument bearings and distances.



LESSEE CERTIFICATE
I, THE UNDERSIGNED, HEREBY CERTIFY THAT I AM THE LESSEE AS SHOWN HEREON. I HEREBY APPROVE THIS SURVEY AND PLAN.
TRACT M, AND ADL No. 418081
Henry K. ... 4/20/11

NOTARY'S ACKNOWLEDGEMENT
SUBSCRIBED AND SWORN TO BEFORE ME THIS 20th DAY OF April, 2011
FOR: Henry K. ...
NOTARY PUBLIC FOR ALASKA
MY COMMISSION EXPIRES WITH OFFICE

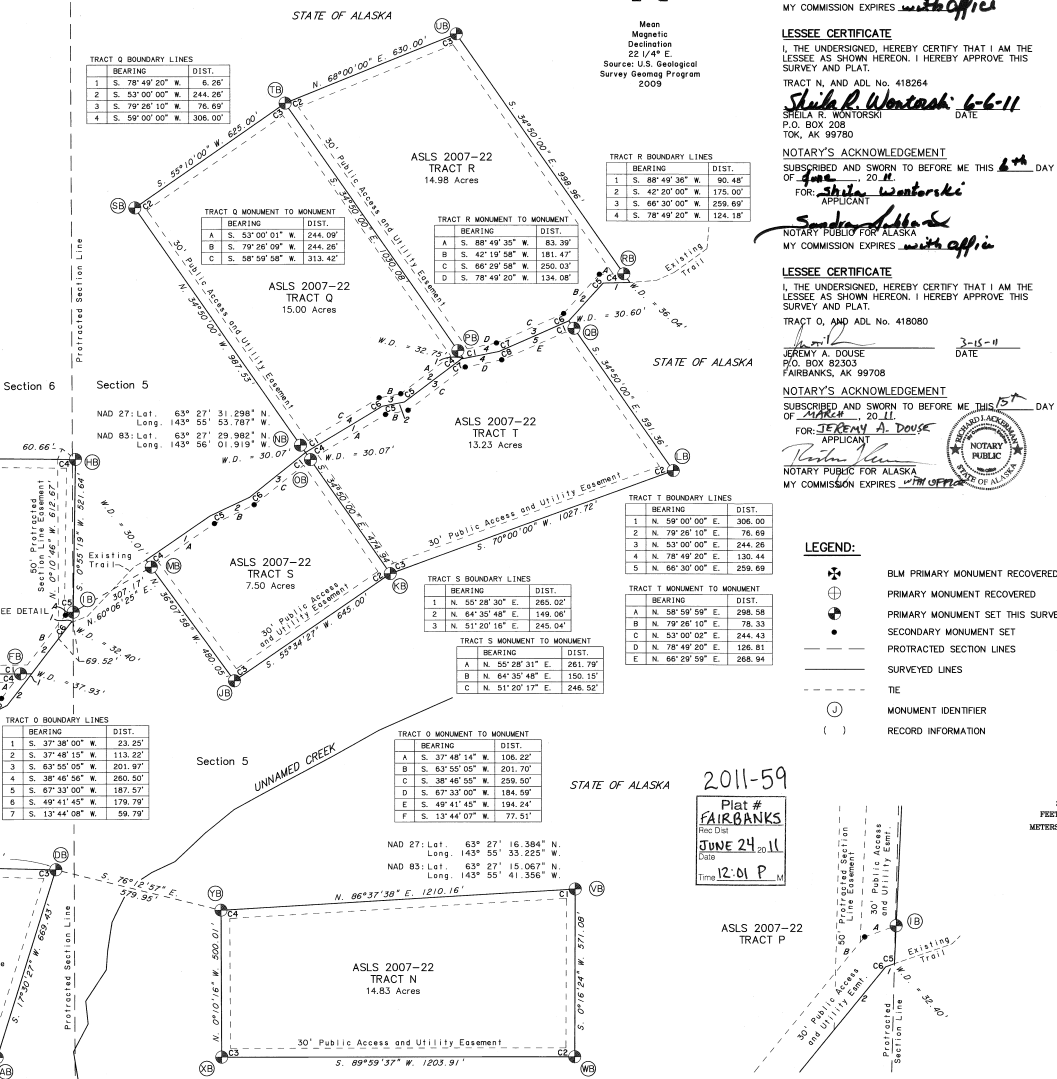
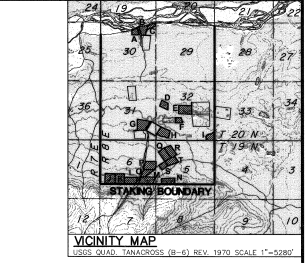
LESSEE CERTIFICATE
I, THE UNDERSIGNED, HEREBY CERTIFY THAT I AM THE LESSEE AS SHOWN HEREON. I HEREBY APPROVE THIS SURVEY AND PLAN.
TRACT M, AND ADL No. 418284
Shula R. Wontorki 6-6-11

NOTARY'S ACKNOWLEDGEMENT
SUBSCRIBED AND SWORN TO BEFORE ME THIS 6th DAY OF June, 2011
FOR: Shula R. Wontorki
NOTARY PUBLIC FOR ALASKA
MY COMMISSION EXPIRES WITH OFFICE

LESSEE CERTIFICATE
I, THE UNDERSIGNED, HEREBY CERTIFY THAT I AM THE LESSEE AS SHOWN HEREON. I HEREBY APPROVE THIS SURVEY AND PLAN.
TRACT Q, AND ADL No. 418080
JEREMY A. DOUSE 3-15-11

NOTARY'S ACKNOWLEDGEMENT
SUBSCRIBED AND SWORN TO BEFORE ME THIS 15th DAY OF March, 2011
FOR: JEREMY A. DOUSE
NOTARY PUBLIC FOR ALASKA
MY COMMISSION EXPIRES WITH OFFICE

- LEGEND:
BLM PRIMARY MONUMENT RECOVERED
PRIMARY MONUMENT RECOVERED
PRIMARY MONUMENT SET THIS SURVEY
SECONDARY MONUMENT SET
PROTRACTED SECTION LINES
SURVEYED LINES
TE
MONUMENT IDENTIFIER
RECORD INFORMATION



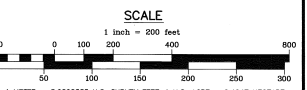
LESSEE CERTIFICATE
I, THE UNDERSIGNED, HEREBY CERTIFY THAT I AM THE LESSEE AS SHOWN HEREON. I HEREBY APPROVE THIS SURVEY AND PLAN.
TRACT P, AND ADL No. 418119
Shula R. Wontorki 2/18/11

NOTARY'S ACKNOWLEDGEMENT
SUBSCRIBED AND SWORN TO BEFORE ME THIS 18th DAY OF February, 2011
FOR: Shula R. Wontorki
NOTARY PUBLIC FOR ALASKA
MY COMMISSION EXPIRES WITH OFFICE

LESSEE CERTIFICATE
I, THE UNDERSIGNED, HEREBY CERTIFY THAT I AM THE LESSEE AS SHOWN HEREON. I HEREBY APPROVE THIS SURVEY AND PLAN.
TRACT S, AND ADL No. 418087
JEREMY A. DOUSE 2/16/11

NOTARY'S ACKNOWLEDGEMENT
SUBSCRIBED AND SWORN TO BEFORE ME THIS 16th DAY OF February, 2011
FOR: JEREMY A. DOUSE
NOTARY PUBLIC FOR ALASKA
MY COMMISSION EXPIRES WITH OFFICE

NOTE: The centerline of the existing trail was located and used to control the centerline of a 60' wide trail easement. The boundaries of Tracts O - T are along the centerline of the trail easement. The monuments were offset along the sidelines of the 30' trail half width which coincides with the 30' public access and utility easement.



STATE OF ALASKA
DEPARTMENT OF NATURAL RESOURCES
DIVISION OF MINING, LAND & WATER
ALASKA STATE LAND SURVEY NO. 2007-22
ROBERTSON RIVER REMOTE RECREATIONAL CABIN SITES CREATING TRACTS A THROUGH T
WITHIN UNSURVEYED SECTIONS 30, 31 & 32, T. 20 N., R. 6 E. & UNSURVEYED SECTIONS 5 & 6, T. 19 N., R. 6 E., COPPER RIVER MERIDIAN, ALASKA, FAIRBANKS RECORDING DISTRICT
DRAWN BY: LSV
DATE: 8/20/07
APPROVAL RECOMMENDED BY: William S. Brown for 8/20/11
DATE: 8/20/07
STATEwide PLATING SUPERVISOR
CHECKED: DNR FILE NO.
SCALE: 1"=200'
S.E.S.
ASLS 20070022

Attachment "A"

ALASKA STATE LAND SURVEY 2007-22

APPLICANT CERTIFICATE

I, the undersigned, hereby certify that I am the applicant as shown hereon.
I hereby approve this survey and plat.

TRACT No. "H" ADL No. 418253

Michael Warner

5-6-11

Michael Warner
PO Box 18146
Coffman Cove, Alaska 99918

Date

NOTARY'S ACKNOWLEDGEMENT

Subscribed and sworn to before me this 6th day of May, 2011

For Michael Warner

Bridget Wright

Notary Public for Alaska

My Commission Expires 9-15-14

