

BEARPAW REMOTE RECREATIONAL CABIN SITES INDEX SHEET

RECORD PLATS (All in the Fairbanks Recording District)

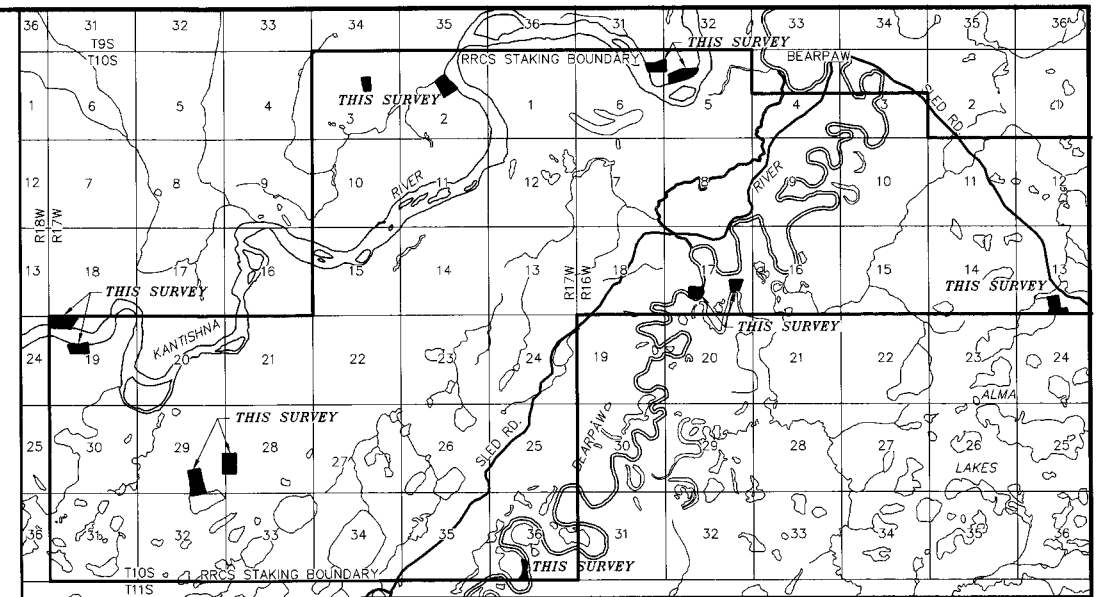
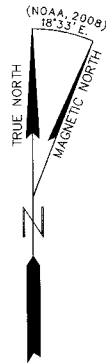
Recording No	Plat Name
(R1) 88-38	ASLS 87-124
(R2) 88-43	ASLS 87-108
(R3) 90-24	ASLS 89-122
(R4) 92-29	ASLS 90-94
(R5) 93-132	ASLS 92-16
(R6) 93-133	ASLS 88-110
(R7) 94-38	ASLS 87-105
(R8) 94-125	ASLS 94-5

RECTANGULAR PLATS

(R9) T.10S., R.16W., FM dated 4-2-1987
(R10) T.10S., R.17W., FM dated 4-2-1987

LEGEND

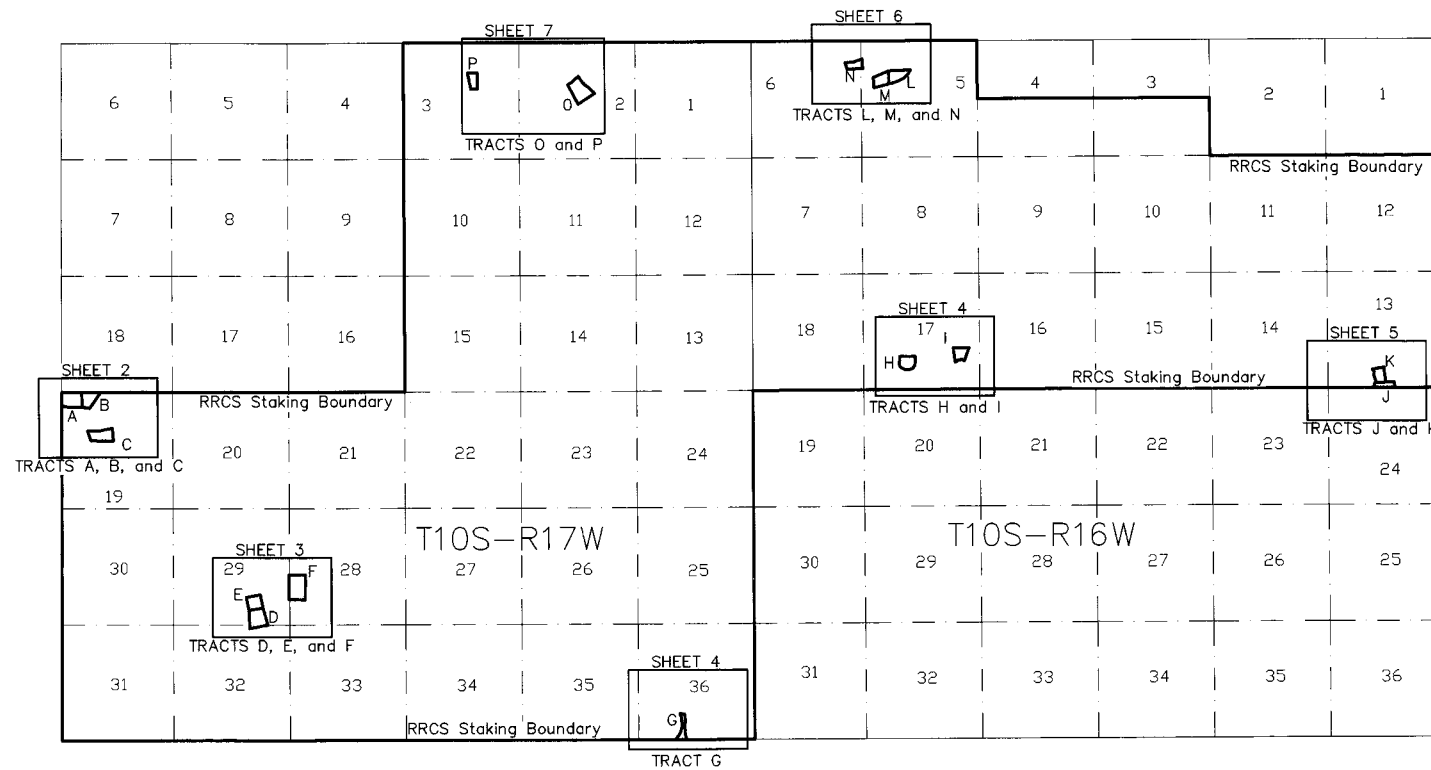
	BLM MONUMENT RECOVERED
	PRIMARY MONUMENT SET THIS SURVEY
	PRIMARY MONUMENT RECOVERED
	SECONDARY MONUMENT SET THIS SURVEY
	SECONDARY MONUMENT RECOVERED
	SURVEYED
	UNSURVEYED
	EASEMENT
	TIE BETWEEN LOTS
	O.H.W. ORDINARY HIGH WATER
<i>(R)</i>	RECORD DATA, SEE NOTE



VICINITY MAP SOURCE: USGS QUAD, Kantishna River (A-2), 1952, rev. 1971 and Mt. McKinley (D-2), 1954, rev. 1963 SCALE: 1"=1 mile

NOTES:

- This survey was accomplished in accordance with AS 38.05.600, GSC 750 and RRCS SI 2007-21.
- All bearings shown, unless noted, are true bearings as oriented to the Basis of Bearing and distances shown are reduced to horizontal field distances.
- The accuracy of this survey is greater than 1:5000.
- All parcels of land owned by the State of Alaska, located within 50.00 feet of, or bisected by a surveyed or protracted section line, are subject to a 50 foot (50') easement, on each side of the section line, which is reserved to the State of Alaska for public highways under AS 19.10.010.
- The existing lessees' claim corners were recovered and used to control the location of tract boundaries.
- BASIS OF BEARING:** The basis of bearing for this plat was determined by high precision GPS survey, using Topcon/Javad Legacy and Odyssey receivers, differentially corrected and processed using Topcon Tools Vers. 6.04 software. A local grid was established oriented to true geocentric north at Lat:64°04'43.23915", Long:150°51'21.46313"; NAD 27 (Lat:64°04'41.41823", Long:150°51'29.93375"; NAD 83) (Corner 3, Tract P, ASLS 2007-21)
- COORDINATES:** The coordinates used were constrained to the National Spatial Reference System (NSRS) using CORS Stations ZAN1, FAI1, and FAIR, extended to the corner locations by static survey methods, and converted from NAD 83 to NAD 27 using the CORPSCON utility.
- The natural meanders of the line of ordinary high water (OHW) form the true bounds of Tracts A, B, C, D, H, I, J, K, L, M, N, and O. The approximate line of OHW, as shown, is for area computation only, with the true corners being on the extension of the sidelines and their intersection with the natural meanders.
- There is a 100 foot building setback from the ordinary high water line of all water bodies determined to be Public or Navigable.
- Ties shown between tracts and Corner 3, Tract P are mean true bearings (NAD83) with horizontal field distances.



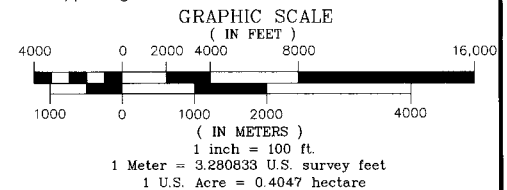
CERTIFICATE OF OWNERSHIP AND DEDICATION
I, the undersigned, hereby certify that I am the Director, Division of Mining, Land, and Water, and that the State of Alaska is the owner of ASLS 2007-21 as shown hereon. I hereby approve this survey and plat for the State of Alaska, and dedicate for public or private use as noted, all easements, public utility areas, and rights-of-way as shown and described hereon.

Dated Jan 14, 2011, 2011
Gerald Jennings
For Director, Division of Mining, Land and Water

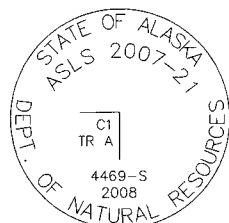
NOTARY'S ACKNOWLEDGEMENT
Subscribed and sworn to before me this 14th day of January, 2011
For: *Gerald Jennings*
Randa Wilson
Notary Public for Alaska
My Commission Expires with office



CERTIFICATE OF SUBDIVISION APPROVAL
This subdivision has been reviewed and found to be in compliance with the Denali Borough Platting Ordinance No. 96-22 and the applicable provisions of the law and is hereby approved.
Denali Borough 1-04-11
Date
Approving Official



TYPICAL PRIMARY MONUMENT SET THIS SURVEY



3-1/4" aluminum cop on 2" I.D. x 30" aluminum pipe, 0.2' above ground.

SURVEYOR'S CERTIFICATE

I certify that I am properly registered and licensed to practice land surveying in the State of Alaska, that this plat represents a survey made by me or under my direct supervision, that the monuments shown hereon exist as described, and that all dimensions and other details are correct.

Date: 5/27/10
Registration No.: 4469-S
Donald E. Mullikin,
Professional Land Surveyor

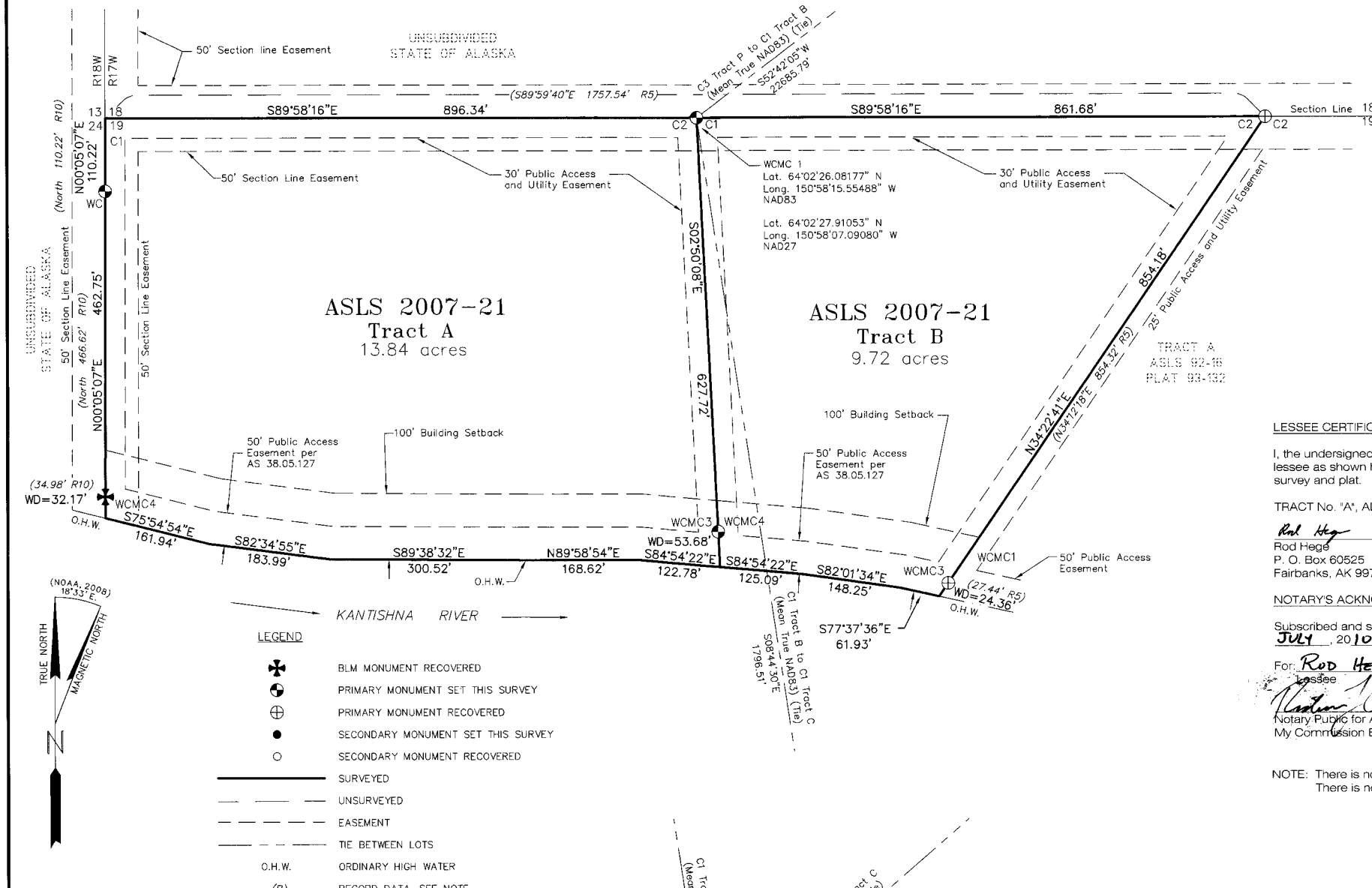


Fairbanks 2011-10

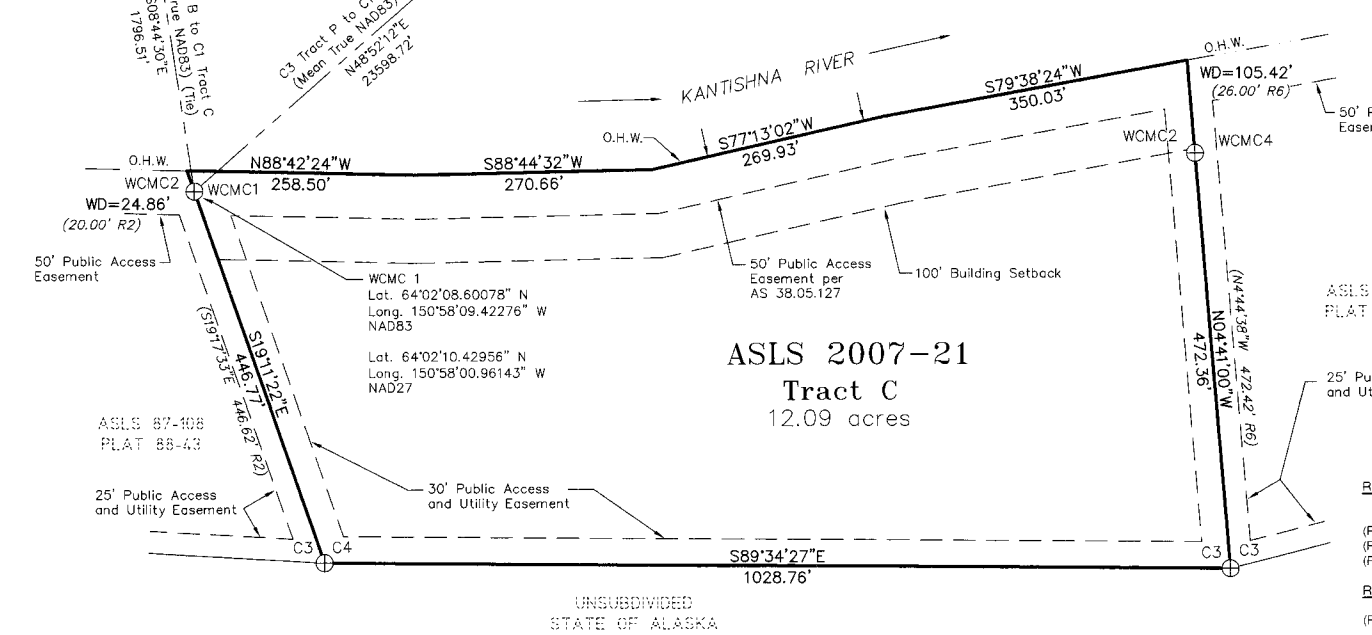
SHEET 1 OF 8

DATE OF SURVEY: BEGINNING June 19, 2009 ENDING June 30, 2009	NAME OF SURVEYOR: Mullikin Surveys P.O. Box 790 Homer, AK 99603-0790
STATE OF ALASKA DEPARTMENT OF NATURAL RESOURCES, DIVISION OF MINING, LAND, AND WATER ANCHORAGE, ALASKA	
ALASKA STATE LAND SURVEY 2007-21	
BEARPAW REMOTE RECREATIONAL CABIN SITES CREATING TRACTS A THROUGH P WITHIN UNSURVEYED SECTIONS 2, 3, 19, 28, 29, 32 and 36, T.10S., R.17W., and UNSURVEYED SECTIONS 5, 6, 13 and 17, T.10S., R.16W., FAIRBANKS MERIDIAN, ALASKA	
FAIRBANKS RECORDING DISTRICT	
DRAWN BY: TAL DATE: 12-31-2009	APPROVAL RECOMMENDED: <i>William S. Brown</i> STATEWIDE PLATTING SUPERVISOR, DATE
SCALE: 1" = 4000'	CHECKED FIELD BOOK FILE NO. DEM, JWM 310A-310F ASLS 20070021

BEARPAW REMOTE RECREATIONAL CABIN SITES



Cor. #	Corner Marking	Description	Accessories
1	ASLS 87-108 WCMC 2 LS 5480 1987	Found 3 1/4" alum. cap, on 2-1/2" alum. pipe, 0.5' above ground, approximately 15' from riverbank.	Found: Fiberglass Post, SSW, 0.8' 15" Spruce, S38°E, 29.31' 8" Spruce, S42-1/2°W, 25.05' 8" Spruce, S81°W, 46.73' Set: New tags on original BTs
2	ASLS 88-110 WCMC 4 LS 5480 1990	Found 3 1/4" alum. cap, on 2-1/2" alum. pipe, 0.9' above ground.	Found: Fiberglass Post, E., 2.5' 8" Spruce, S38°E, 70.32' 7" Spruce, S42-1/2°W, 64.84' 9" Cottonwood, S81°W, 37.00'
3	ASLS 88-110 C-3 LS 5480 1990	Found 3 1/4" alum. cap, on 2-1/2" alum. pipe, 0.2' above ground.	Found: Fiberglass post, S., 1.5' 7" Spruce, N42°W, 35.65' Set: 7" Spruce, S73°E, 21.00' 6" Spruce, S22-1/2°W, 47.87'
4	ASLS 87-108 COR 3 LS 5480 1987	Found 3 1/4" alum. cap, on 2-1/2" alum. pipe, 0.4' above ground, good condition.	Found: Fiberglass Post, W., 0.9', 15" Spruce, dead and fallen not measured (SE Approx 66') 9" Spruce, S31-1/2°E, 14.24' 8" Spruce, S73-1/2°W, 18.93' Set: 5" Spruce, N2°W, 22.05' New tags on original BTs



Cor. #	Corner Marking	Description	Accessories
1	ASLS 2007-21 WC T10S R18W R17W S13 S18 S24 S19 1982 2009 4469-S	Original monument found broken; Position re-established from three original Bearing Trees. Set 3 1/4" alum. cap, on 2" I.D. alum. pipe, 0.5' above ground. Original monument buried alongside	Found: Orange Triangle, W, 6.8' 5" Spruce (dead), N38°E, 18.50' 4" Spruce (dead), S31°W, 10.89' 5" Spruce (dead), S18°E, 6.25' Set: Fiberglass Post, N, 0.5' 3" Spruce, S32°E, 18.24' 5" Spruce, S80°W, 23.62' 4" Spruce, N6°W, 19.15' Magnet at base
2	ASLS 2007-21 C2 C1 TR A TR B 2009 4469-S	Set 3 1/4" alum. cap, on 2" I.D. alum. pipe, 0.1' above ground.	Set: Wood Post, N21°E., 0.9' 4" Spruce, N12E, 28.57' 6" Spruce, S27°E, 25.00' 9" Spruce, S63°W, 48.99' Magnet at base
3	ASLS 2007-21 WC TR A TR B C3 C4 MC 2009 4469-S	Set 3 1/4" alum. cap, on 2" I.D. alum. pipe, 0.2' above ground.	Set: Steel Fence Post, N., 0.3' 4" Spruce, N17°E, 10.26' 6" Birch, N89°E, 13.00' 5" Birch, N42°W, 7.50' Magnet at base
4	WC T10S R18W R17W S24 S19 MC 1982 BLM	Found 3 1/4" alum. cap, on 3/4" alum. drive rod, 3.0' above ground.	Found: Orange Triangle, N, 6.6' 9" Birch, N78-1/2°E, 44.98' 7" Birch, N20°W, 53.13' Set: Wood Post, 4" Spruce, N20°E, 38.12'

LESSEE CERTIFICATE

I, the undersigned, hereby certify that I am the lessee as shown hereon. I hereby approve this survey and plat.

TRACT No. "A", ADL No. 418113

Rod Hege 7-30-10
Date

Rod Hege
P. O. Box 60525
Fairbanks, AK 99706

NOTARY'S ACKNOWLEDGEMENT

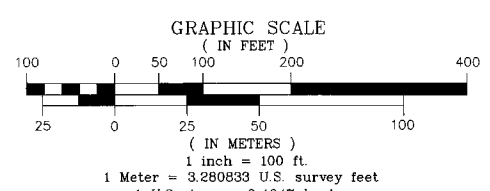
Subscribed and sworn to before me this 30th day of JULY, 2010.

For: *Rod Hege*
Lessee

Richard Lackman
Notary Public for Alaska
My Commission Expires WITH OFFER

NOTE: There is no lessee for Tract B, ADL 418259
There is no lessee for Tract C, ADL 418260

Cor. #	Corner Marking	Description	Accessories
1	See Corner 2 Tract A		
2	ASLS 92-10 C2 TR A 1992 LS 5318	Found 2-1/2" alum. cap, on 2-1/2" O.D. alum. pipe, 0.3' above ground, good condition.	Found: Squared Spruce post, W, 1.6' 6" Spruce, N24-1/2°E, 19.35' 7" Spruce, N79°E, 24.60' 8" Spruce, S37-1/2°W, 5.50'
3	ASLS 92-10 MC 1 WC 1 TR A 1992 LS 5318	Found 2-1/2" alum. cap, on 2" O.D. alum. pipe, 0.2' above ground.	Found: 9" Spruce, N20°E, 11.55' 7" Birch, S88°E, 5.95' 12" Spruce, S73°W, 6.40' 4"x4" Birch post, S79°W, 21.00' Set post
4	See Corner 3 Tract A		



DATE OF SURVEY: BEGINNING June 19, 2009 ENDING June 30, 2009

NAME OF SURVEYOR: Mullikin Surveys P.O. Box 790 Homer, AK 99603-0790

STATE OF ALASKA
DEPARTMENT OF NATURAL RESOURCES,
DIVISION OF MINING, LAND, AND WATER
ANCHORAGE, ALASKA

ALASKA STATE LAND SURVEY 2007-21

BEARPAW REMOTE RECREATIONAL CABIN SITES
CREATING TRACTS A THROUGH P
WITHIN UNSURVEYED SECTIONS 2, 3, 19, 28, 29,
32 and 36, T.10S., R.17W., and
UNSURVEYED SECTIONS 5, 6, 13 and 17, T.10S., R.16W.,
FAIRBANKS MERIDIAN, ALASKA

FAIRBANKS RECORDING DISTRICT

DRAWN BY: TAL DATE: 12-31-2009

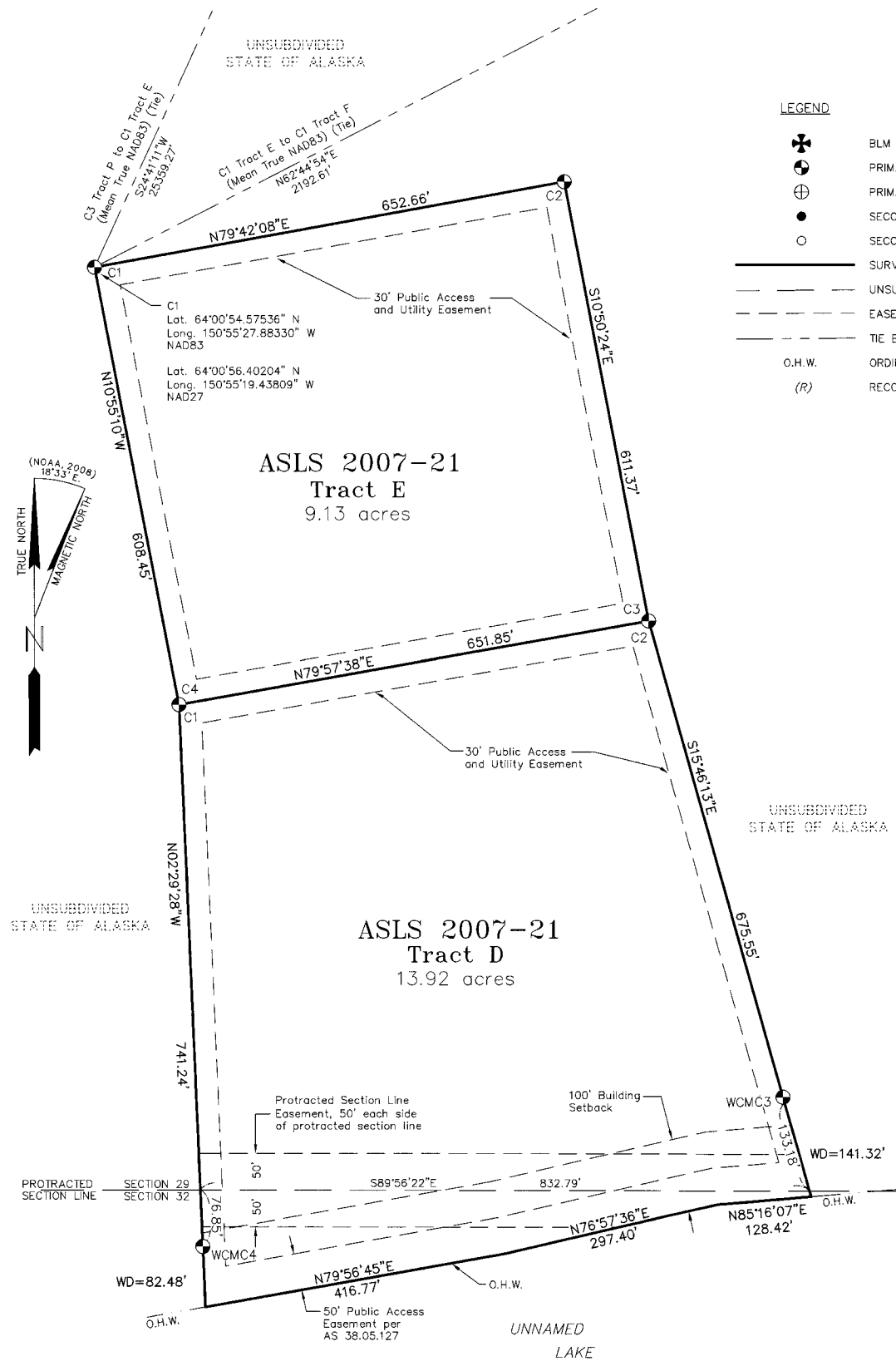
APPROVAL RECOMMENDED: *William S. ...*
STATEWIDE PLATING SUPERVISOR, DATE

SCALE: 1" = 100' CHECKED: DEM, JVM FIELD BOOK FILE NO: 310A-310F ASLS 20070021

All Bearing Trees set this survey have metal tag and are marked "X" "BT"

Fairbanks 2011-10 SHEET 2 OF 8

BEARPAW REMOTE RECREATIONAL CABIN SITES



- LEGEND**
- ⊕ BLM MONUMENT RECOVERED
 - ⊙ PRIMARY MONUMENT SET THIS SURVEY
 - ⊕ PRIMARY MONUMENT RECOVERED
 - SECONDARY MONUMENT SET THIS SURVEY
 - SECONDARY MONUMENT RECOVERED
 - SURVEYED
 - - - UNSURVEYED
 - - - EASEMENT
 - - - TIE BETWEEN LOTS
 - O.H.W. ORDINARY HIGH WATER
 - (R) RECORD DATA, SEE NOTE

LESSEE CERTIFICATE

I, the undersigned, hereby certify that I am the lessee as shown hereon. I hereby approve this survey and plat.

TRACT No. "E", ADL No. 418252

John Page III 8-4-10
Date
John Page III
5855 Duffy Loop
Fairbanks, AK 99712

NOTARY'S ACKNOWLEDGEMENT

Subscribed and sworn to before me this 4th day of AUG, 2010.

For: *John Page III*
Lessee
Richard Lackerham
Notary Public for Alaska
My Commission Expires WITH OFFICE

LESSEE CERTIFICATE

I, the undersigned, hereby certify that I am the lessee as shown hereon. I hereby approve this survey and plat.

TRACT No. "F", ADL No. 418263

Travis Stevens 8/4/10
Date
Travis Stevens
P.O. Box 542,
Denali Park, AK 99755

NOTARY'S ACKNOWLEDGEMENT

Subscribed and sworn to before me this 4th day of AUG, 2010.

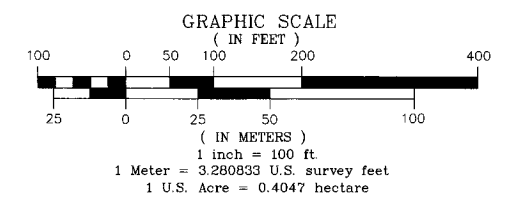
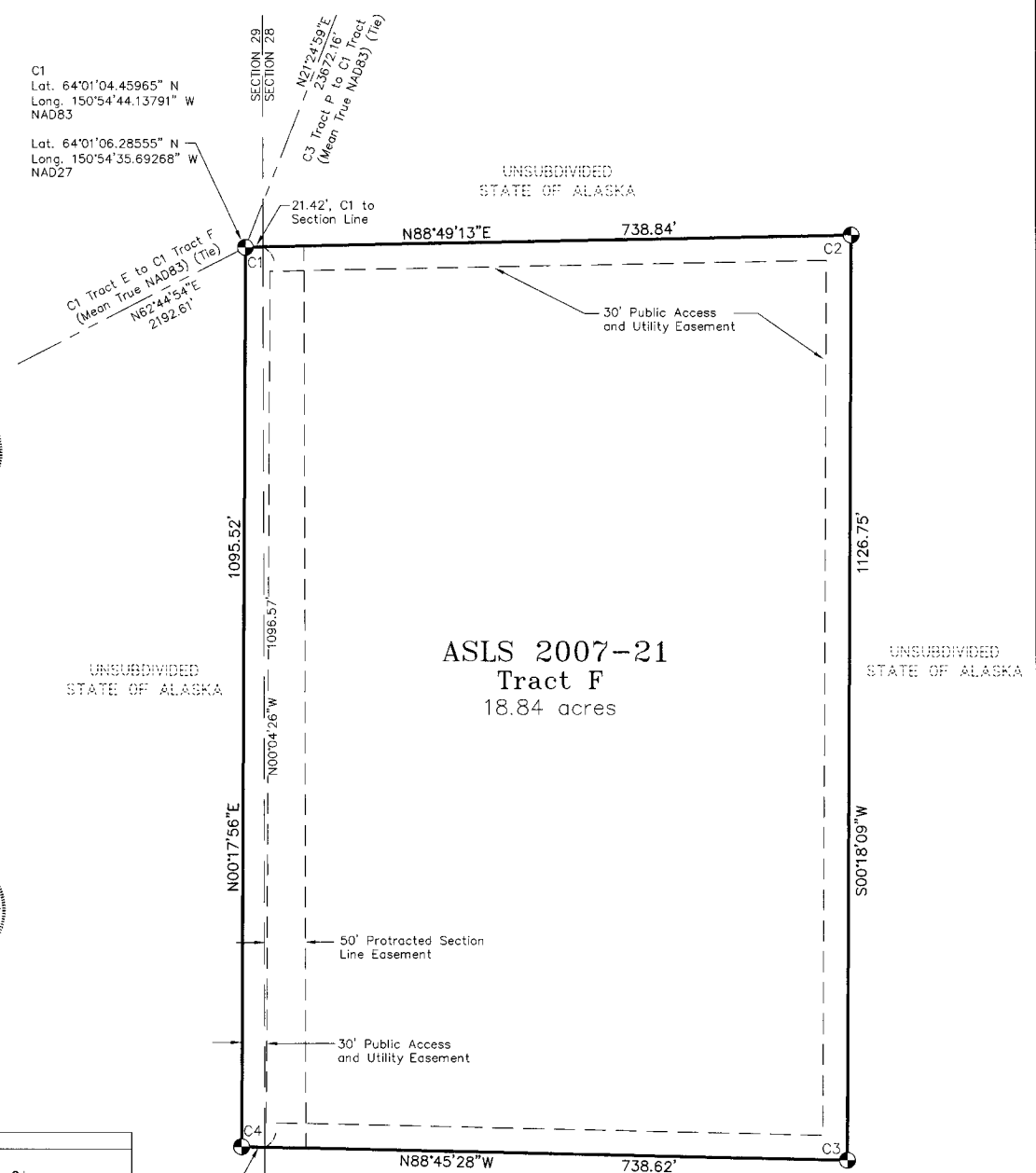
For: *Travis Stevens*
Lessee
Richard Lackerham
Notary Public for Alaska
My Commission Expires WITH OFFICE

NOTE: There is no lessee for Tract D, ADL 418254

TRACT D MONUMENTATION

Cor. #	Corner Marking	Description	Accessories
1	ASLS 2007-21 TR E C4 TR D	Set 3 1/4" alum. cap, on 2" I.D. alum. pipe, 0.1' above ground.	Set: Wood post, W., 1.0' 8" Spruce, S61°E, 36.91' 9" Birch, S47°W, 47.30' 15" Spruce, N29-1/2°W, 32.78' Magnet at base
2	ASLS 2007-21 TR E C3 TR D	Set 3 1/4" alum. cap, on 2" I.D. alum. pipe, 0.2' above ground.	Set: Wood Post, N75°E., 1.1' 10" Birch, N40°E, 14.11' 10" Birch, S11°W, 22.95' 8" Birch, N48°W, 11.68' Magnet at base
3	ASLS 2007-21 TR D C3 MC	Set 3 1/4" alum. cap, on 2" I.D. alum. pipe, 0.2' above ground.	Set: Steel Fence Post, W., 1.0' 4" Spruce, N19-1/2°E, 8.38' 4" Spruce, S84°E, 26.21' 4" Spruce, S75°W, 6.82' Magnet at base
4	ASLS 2007-21 TR D C4 MC	Set 3 1/4" alum. cap, on 2" I.D. alum. pipe, 0.2' above ground.	Set: Steel Fence Post, W., 1.0' 4" Spruce, N69°E, 19.11' 4" Spruce, S45°W, 23.90' 5" Spruce, N53°W, 12.25' Magnet at base

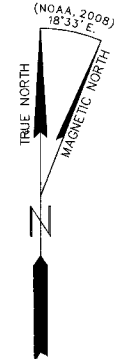
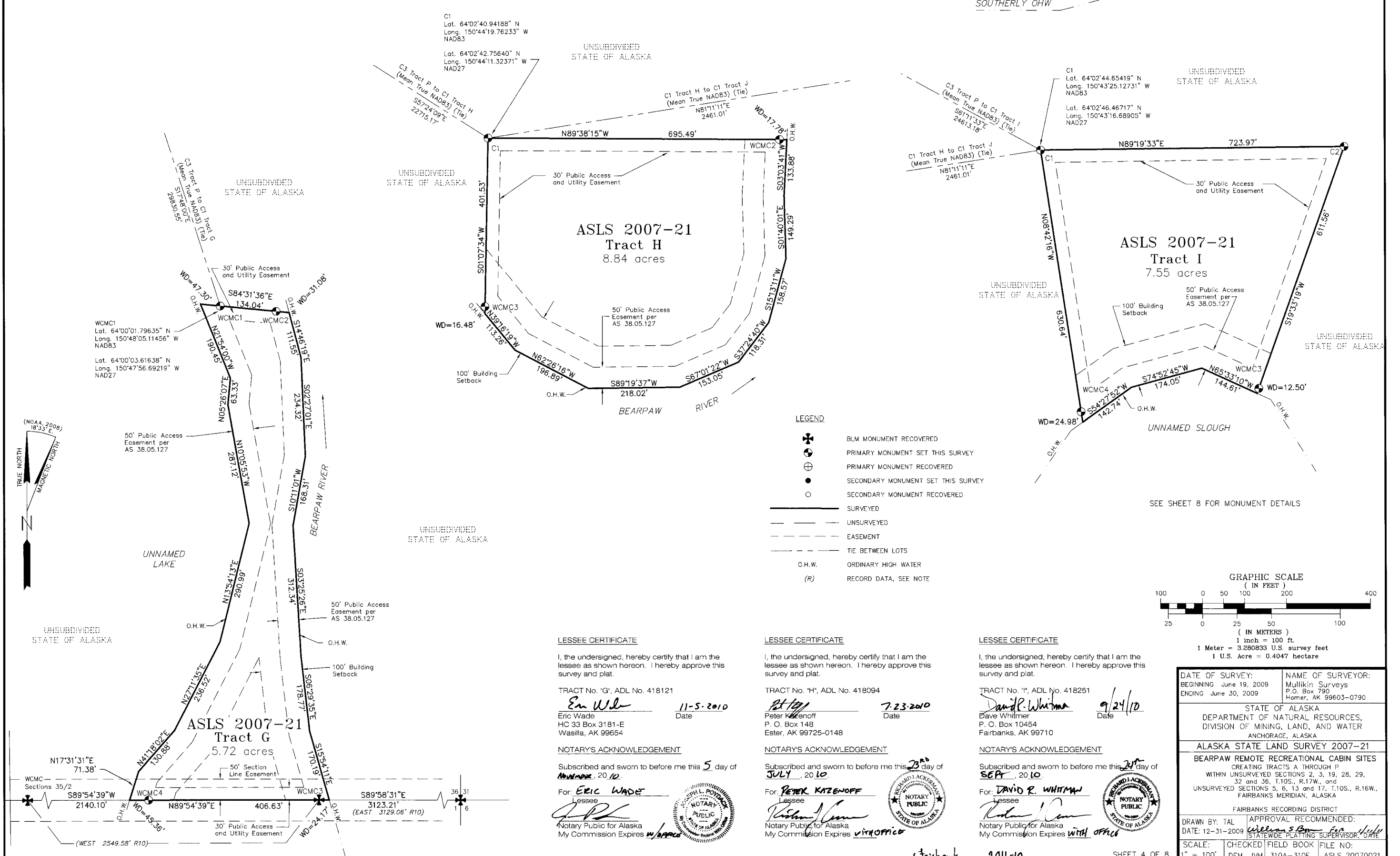
All Bearing Trees set this survey have metal tag and are marked "X" "BT"



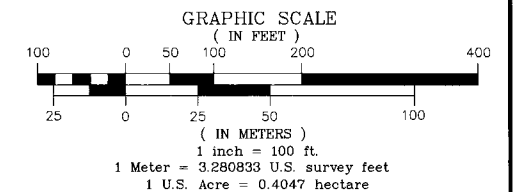
DATE OF SURVEY: BEGINNING June 19, 2009 ENDING June 30, 2009	NAME OF SURVEYOR: Mullikin Surveys P.O. Box 790 Homer, AK 99603-0790
STATE OF ALASKA DEPARTMENT OF NATURAL RESOURCES, DIVISION OF MINING, LAND, AND WATER ANCHORAGE, ALASKA	
ALASKA STATE LAND SURVEY 2007-21 BEARPAW REMOTE RECREATIONAL CABIN SITES CREATING TRACTS A THROUGH P WITHIN UNSURVEYED SECTIONS 2, 3, 19, 28, 29, 32 and 36, T.10S., R.17W., and UNSURVEYED SECTIONS 5, 6, 13 and 17, T.10S., R.16W., FAIRBANKS MERIDIAN, ALASKA	
FAIRBANKS RECORDING DISTRICT	
DRAWN BY: TAL	APPROVAL RECOMMENDED: <i>William S. ...</i>
DATE: 12-31-2009	STATEWIDE PLATTING SUPERVISOR, DATE
SCALE: 1" = 100'	CHECKED FIELD BOOK FILE NO: DEM, JYM 310A-310F ASLS 20070021

SEE SHEET 8 FOR MONUMENT DETAILS TRACTS E AND F

BEARPAW REMOTE RECREATIONAL CABIN SITES



- LEGEND**
- BLM MONUMENT RECOVERED
 - PRIMARY MONUMENT SET THIS SURVEY
 - PRIMARY MONUMENT RECOVERED
 - SECONDARY MONUMENT SET THIS SURVEY
 - SECONDARY MONUMENT RECOVERED
 - SURVEYED
 - UNSURVEYED
 - EASEMENT
 - TIE BETWEEN LOTS
 - O.H.W. ORDINARY HIGH WATER
 - (R) RECORD DATA, SEE NOTE



LESSEE CERTIFICATE

I, the undersigned, hereby certify that I am the lessee as shown hereon. I hereby approve this survey and plat.

TRACT No. "G", ADL No. 418121

Eric Wade 11-5-2010
Date

Eric Wade
HC 33 Box 3181-E
Wasilla, AK 99654

NOTARY'S ACKNOWLEDGEMENT

Subscribed and sworn to before me this 5 day of NOVEMBER, 2010.

For: ERIC WADE
Lessee

[Signature]
Notary Public for Alaska
My Commission Expires with office

LESSEE CERTIFICATE

I, the undersigned, hereby certify that I am the lessee as shown hereon. I hereby approve this survey and plat.

TRACT No. "H", ADL No. 418094

Peter Katzenoff 7-23-2010
Date

Peter Katzenoff
P. O. Box 148
Ester, AK 99725-0148

NOTARY'S ACKNOWLEDGEMENT

Subscribed and sworn to before me this 23 day of JULY, 2010.

For: PETER KATZENOFF
Lessee

[Signature]
Notary Public for Alaska
My Commission Expires with office

LESSEE CERTIFICATE

I, the undersigned, hereby certify that I am the lessee as shown hereon. I hereby approve this survey and plat.

TRACT No. "I", ADL No. 418251

David R. Whitman 9/24/10
Date

Dave Whitman
P. O. Box 10454
Fairbanks, AK 99710

NOTARY'S ACKNOWLEDGEMENT

Subscribed and sworn to before me this 24 day of SEPT, 2010.

For: DAVID R. WHITMAN
Lessee

[Signature]
Notary Public for Alaska
My Commission Expires with office

DATE OF SURVEY: BEGINNING June 19, 2009 ENDING June 30, 2009	NAME OF SURVEYOR: Mullikin Surveys P.O. Box 790 Fairbanks, AK 99603-0790
STATE OF ALASKA DEPARTMENT OF NATURAL RESOURCES, DIVISION OF MINING, LAND, AND WATER ANCHORAGE, ALASKA	
ALASKA STATE LAND SURVEY 2007-21	
BEARPAW REMOTE RECREATIONAL CABIN SITES CREATING TRACTS A THROUGH P WITHIN UNSURVEYED SECTIONS 2, 3, 19, 28, 29, 32 and 36, T.10S., R.17W., and UNSURVEYED SECTIONS 5, 6, 13 and 17, T.10S., R.16W., FAIRBANKS MERIDIAN, ALASKA	
FAIRBANKS RECORDING DISTRICT	
DRAWN BY: TAL	APPROVAL RECOMMENDED: <i>[Signature]</i> STATEWIDE PLATTING SUPERVISOR, DOTE
DATE: 12-31-2009	FILE NO: ASLS 20070021
SCALE: 1" = 100'	CHECKED FIELD BOOK DEM, JWM 310A-310F

BEARPAW REMOTE RECREATIONAL CABIN SITES

LESSEE CERTIFICATE

I, the undersigned, hereby certify that I am the lessee as shown hereon. I hereby approve this survey and plat.

TRACT No. "J", ADL No. 418098

Robert James
 Robert James
 HC 1, Box 5009
 Healy, AK 99743
 Date: 7/30/2010

NOTARY'S ACKNOWLEDGEMENT

Subscribed and sworn to before me this 30th day of JULY, 2010.

For: *Robert James*
 Lessee
Notary Public
 Notary Public for Alaska
 My Commission Expires With Office

LESSEE CERTIFICATE

I, the undersigned, hereby certify that I am the lessee as shown hereon. I hereby approve this survey and plat.

TRACT No. "K", ADL No. 418129

Philip B. Naegel
 Philip B. Naegel
 9788 N. Waldo Reed Rd.
 Palmer, AK 99645
 Date: 11/26/2010

NOTARY'S ACKNOWLEDGEMENT

Subscribed and sworn to before me this 26 day of November, 2010.

For: *Philip B. Naegel*
 Lessee
Notary Public
 Notary Public for Alaska
 My Commission Expires With Office



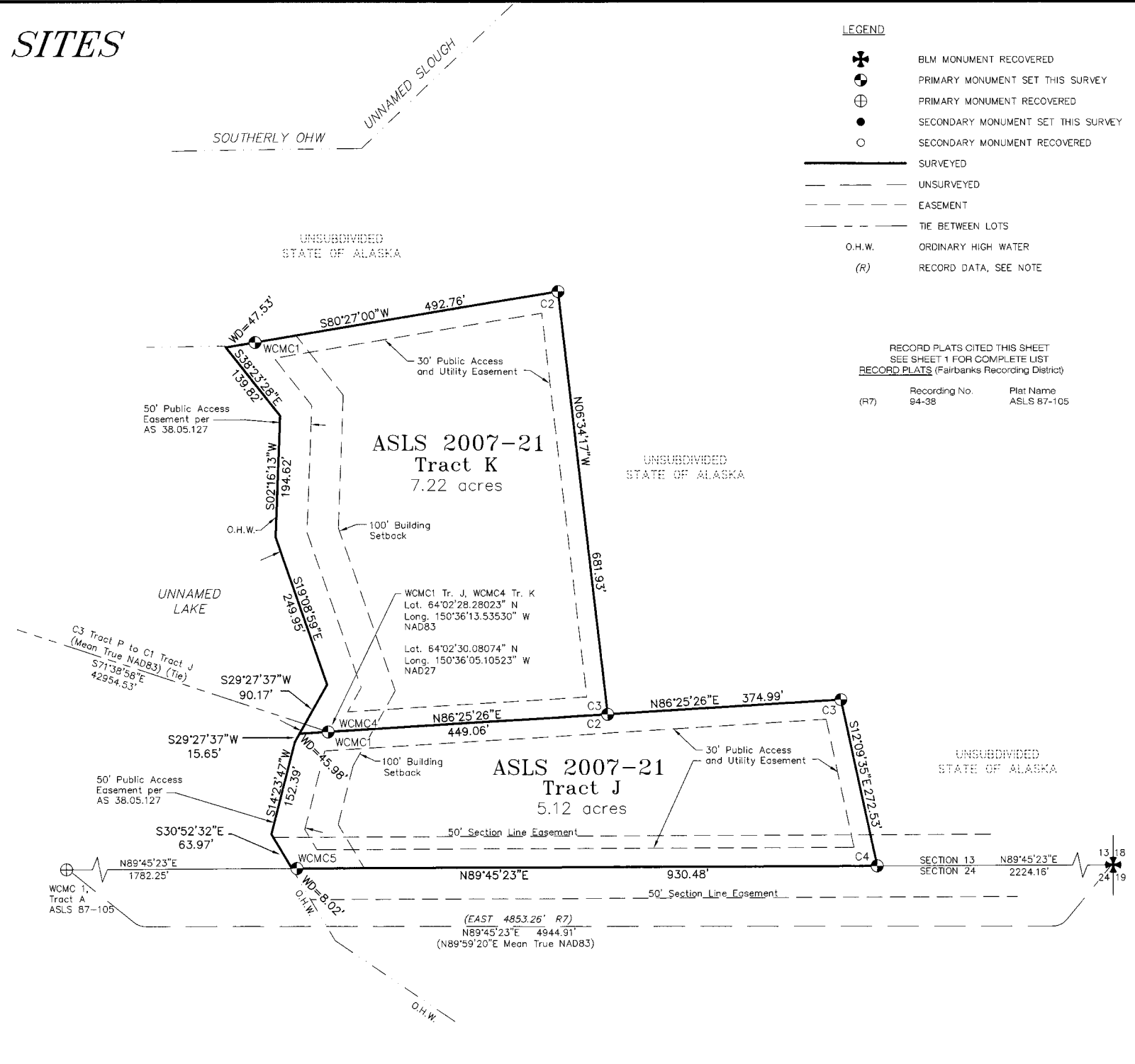
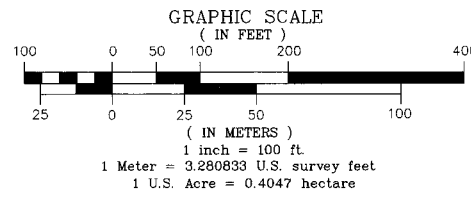
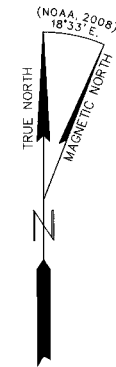
TRACT J MONUMENTATION

Cor. #	Corner Marking	Description	Accessories
1	ASLS 2007-21 WC TR K MC C4 C1 TR J	Set 3 1/4" alum. cap, on 2" I.D. alum. pipe, 0.2' above ground.	Set: Fiberglass post, NE, 2.2' 7" Spruce, N20°E, 12.53' 8" Spruce, S83°E, 41.58' 9" Spruce, S1°W, 20.32' Magnet at base
2	ASLS 2007-21 TR K C3 C2 TR J	Set 3 1/4" alum. cap, on 2" I.D. alum. pipe, 0.2' above ground.	Set: Fiberglass post, N, 0.5' 4" Spruce, N25°E, 29.65' 5" Spruce, S61-1/2°E, 36.36' 5" Birch, S80-1/2°W, 45.69' Magnet at base
3	ASLS 2007-21 C3 TR J	Set 3 1/4" alum. cap, on 2" I.D. alum. pipe, 0.2' above ground.	Set: Fiberglass post, N, 0.6' 4" Spruce, N0-1/2°E, 14.66' 4" Spruce, S33°E, 48.50' Wood post, SW, 1.3' 5" Spruce, N83-1/2°W, 5.50' Magnet at base
4	ASLS 2007-21 TR J C4	Set 3 1/4" alum. cap, on 2" I.D. alum. pipe, 0.2' above ground.	Set: Fiberglass post, NE, 0.8' 6" Spruce, S70-1/2°E, 66.83' 4" Spruce, S 70-1/2°W, 47.20' 5" Spruce, N19-1/2°W, 34.21' Magnet at base
5	ASLS 2007-21 WC TR J MC C5	Set 3 1/4" alum. cap, on 2" I.D. alum. pipe, 0.2' above ground.	Set: Wood post, SW, 1.0' 6" Tamarack, N68°E, 34.28' 6" Spruce, S8°E, 29.58' 9" Spruce, N73°W, 16.95' Magnet at base
	ASLS 87-105 TRA WCMC COR 1 4110-S 1987	Found 3-1/4" alum. cap, on 2" I.D. alum. pipe, 0.1' above ground.	Found: Wood post, 2"x4", S., 1.0', 13" Spruce, N57-1/4°E, 25.6' 21" Spruce, S51-1/2°W, 62.1' 17" Spruce, N75-1/4°W, 38.9'
	T10S R16W R15W S13 S18 S24 S19 1981 BLM	Found 3-1/4" alum. cap, on 2-1/2" alum. pipe, 0.1' above ground, in good condition.	Found: Metal Triangle on alum. drive rod, W, 6.00' 5" Spruce, N65-1/2°E, 48.8' 4" Spruce (dead), S20°E, 35.0' 4" Spruce (dead), S57-1/2°W, 18.8' 6" Spruce, N33-1/2°W, 35.0' Set: 4" Spruce, S53-1/2°E, 8.19' Spruce, S61°W, 17.00'

TRACT K MONUMENTATION

Cor. #	Corner Marking	Description	Accessories
1	ASLS 2007-21 WC MC C1 TR K	Set 3 1/4" alum. cap, on 2" I.D. alum. pipe, 0.2' above ground.	Set: Fiberglass post, N, 0.4' 4" Birch, N52°E, 4.79' 5" Birch, S51-1/2°E, 24.64' 4" Spruce, N53-1/2°W, 7.14' Magnet at base
2	ASLS 2007-21 C2 TR K	Set 3 1/4" alum. cap, on 2" I.D. alum. pipe, 0.2' above ground.	Set: Fiberglass post, E, 1.0' 4" Spruce, N41-1/2°E, 27.53' 5" Spruce, S18°E, 29.91' 4" Spruce, N60-1/2°W, 13.15' Magnet at base
3	See Corner 2 Tract J		
4	See Corner 1 Tract J		

All Bearing Trees set this survey have metal tag and are marked "X" "BT"



LEGEND

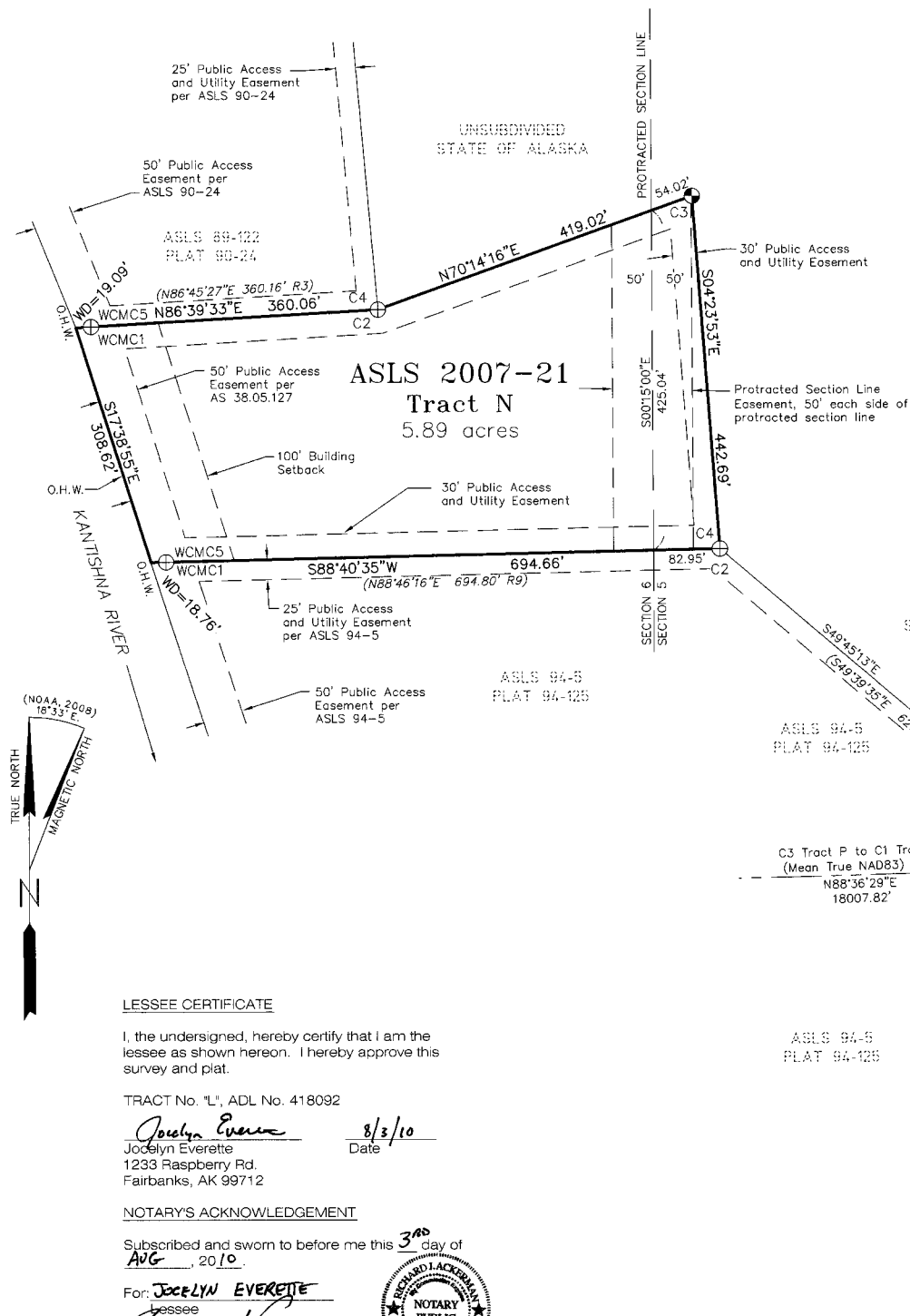
- ⊕ BLM MONUMENT RECOVERED
- ⊙ PRIMARY MONUMENT SET THIS SURVEY
- ⊕ PRIMARY MONUMENT RECOVERED
- SECONDARY MONUMENT SET THIS SURVEY
- SECONDARY MONUMENT RECOVERED
- SURVEYED
- - - UNSURVEYED
- - - EASEMENT
- - - TIE BETWEEN LOTS
- O.H.W. ORDINARY HIGH WATER
- (R) RECORD DATA, SEE NOTE

RECORD PLATS CITED THIS SHEET
 SEE SHEET 1 FOR COMPLETE LIST
 RECORD PLATS (Fairbanks Recording District)

Recording No.	Plat Name
(R7) 94-38	ASLS 87-105

DATE OF SURVEY: BEGINNING June 19, 2009 ENDING June 30, 2009	NAME OF SURVEYOR: Mullikin Surveys P.O. Box 790 Homer, AK 99603-0790
STATE OF ALASKA DEPARTMENT OF NATURAL RESOURCES, DIVISION OF MINING, LAND, AND WATER ANCHORAGE, ALASKA	
ALASKA STATE LAND SURVEY 2007-21	
BEARPAW REMOTE RECREATIONAL CABIN SITES CREATING TRACTS A THROUGH P WITHIN UNSURVEYED SECTIONS 2, 3, 19, 28, 29, 32 and 36, T.10S., R.17W., and UNSURVEYED SECTIONS 5, 6, 13 and 17, T.10S., R.16W., FAIRBANKS MERIDIAN, ALASKA	
FAIRBANKS RECORDING DISTRICT	
DRAWN BY: TAL	APPROVAL RECOMMENDED: <i>William S. Brown</i> STATEWIDE PLATING SUPERVISOR, DATE
DATE: 12-31-2009	
SCALE: 1" = 100'	CHECKED FIELD BOOK FILE NO: DEM, JVM 310A-310F ASLS 20070021

BEARPAW REMOTE RECREATIONAL CABIN SITES



TRACT L MONUMENTATION

Cor. #	Corner Marking	Description	Accessories
1	ASLS 2007-21 C2/C1 TR M/TR L 2009 4469-S	Set 3 1/4" alum. cap, on 2" I.D. alum. pipe, 0.2' above ground.	Set: Wood post, SE, 1.3' 7" Spruce, N89-1/2°E, 14.82' 10" Spruce, S57°E, 14.03' 7" Spruce, N14-1/2°E, 28.13' Magnet at base
2	ASLS 2007-21 WC TR L 2009 4469-S	Set 3 1/4" alum. cap, on 2" I.D. alum. pipe, 0.3' above ground.	Set: Steel post, SE, 0.5' 7" Spruce, S34-1/2°W, 42.63' 13" Spruce, N69°W, 16.37' 10" Spruce, N3-1/2°W, 32.81' Magnet at base
3	ASLS 2007-21 WC TR M/TR L C3/C3 MC 2009 4469-S	Set 3 1/4" alum. cap, on 2" I.D. alum. pipe, 0.1' above ground.	Set: Wood post, E, 1.0' 12" Spruce, N34-1/2°E, 54.42' 9" Spruce, N70-1/2°W, 24.33' 9" Spruce, N3°W, 22.84' Magnet at base

TRACT M MONUMENTATION

Cor. #	Corner Marking	Description	Accessories
1	ASLS 94-5 COR-3 7424-S 1994	Found 2 1/2" alum. cap, on 2" alum. pipe,	Found: 11" Spruce, N21-1/2°E, 47.9' 6" Spruce, S44°E, 17.1' 11" Spruce, N15°W, 53.3' Set: Wood post, N, 2.0'
2	See Corner 1 Tract L		
3	See Corner 3 Tract L		
4	ASLS 94-5 WCMC 4 7424-S 1994	Found 2 1/2" alum. cap, on 2" alum. pipe,	Found: Fiberglass post, W, 1.0' 5" Spruce, N39-1/2°E, 22.40' 13" Spruce, N42°W, 45.95' 7" Spruce, N0-1/2°W, 83.02'

TRACT N MONUMENTATION

Cor. #	Corner Marking	Description	Accessories
1	MANLEY LAND SURVEYORS ASLS 89-122 COR 5 WCMC 5 1989 5032-S	Found 3 1/4" alum. cap, on 2" alum. pipe, 0.2' above ground.	Found: 8" Spruce, N38°E, 14.0' (10" Spruce, N43E, 14.0' R3) 13" Spruce, S5°W, 14.5' (16" Spruce, S5W, 14.7' R3) 12" Spruce, N79°W, 13.2' (14" Spruce, N79W, 13.2' R3) Set: Fiberglass post, S, 0.5'
2	MANLEY LAND SURVEYORS ASLS 89-122 COR 4 1989 5032-S	Found 3 1/4" alum. cap, on 2-1/2" alum. pipe, 0.1' above ground.	Found: Wood post, S, 0.5' 13" Spruce, N20-1/2°E, 15.10' 12" Spruce, S56-1/2°E, 6.80' 12" Spruce, N74°W, 9.35'
3	ASLS 2007-21 COR 3 TR N 2009 4469-S	Set 3 1/4" alum. cap, on 2" I.D. alum. pipe, 0.1' above ground	Set: Wood post, W, 1.0' 7" Spruce, N40-1/2°E, 6.35' 6" Spruce, S11-1/2°E, 21.41' 7" Spruce, N49-1/2°W, 26.99' Magnet at base
4	ASLS 94-5 COR 2 7424-S 1994	Found 2-1/2" alum. cap, on 2" alum. pipe, 0.1' above ground.	Found: Fiberglass post, S, 1.0' 12" Spruce, N65-1/2°E, 22.70' 11" Spruce, S31°E, 9.81' 11" Spruce, N66°W, 18.90'
5	ASLS 94-5 WCMC-1 7424-S 1994	Found 2-1/2" alum. cap, on 2-1/2" alum. pipe, 0.2' above ground.	Set: Fiberglass post, N, 0.5' 12" Spruce, N48°E, 28.4' 12" Spruce, N86-1/2°E, 57.1' 11" Spruce, S57-1/2°E, 59.9'

All Bearing Trees set this survey have metal tag and are marked "X" "BT"

All Bearing Trees set this survey have metal tag and are marked "X" "BT"

LESSEE CERTIFICATE

I, the undersigned, hereby certify that I am the lessee as shown hereon. I hereby approve this survey and plat.

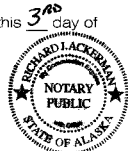
TRACT No. "L", ADL No. 418092

Jocelyn Everette 8/3/10
Date
Jocelyn Everette
1233 Raspberry Rd.
Fairbanks, AK 99712

NOTARY'S ACKNOWLEDGEMENT

Subscribed and sworn to before me this 3rd day of AUG, 2010.

For: *Jocelyn Everette*
Lessee
Caitlin Neum
Notary Public for Alaska
My Commission Expires WITH OFFICE



NOTE: There is no lessee for Tract M, ADL 418262
There is no lessee for Tract N, ADL 418261

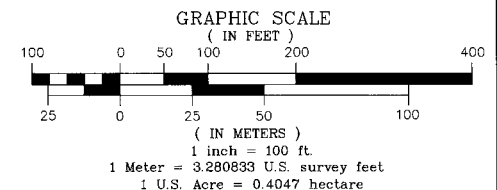
RECORD PLATS CITED THIS SHEET
SEE SHEET 1 FOR COMPLETE LIST

RECORD PLATS (All in the Fairbanks Recording District)

Recording No.	Plat Name
(R3) 90-24	ASLS 89-122
(R8) 94-125	ASLS 94-5

LEGEND

- ⊕ BLM MONUMENT RECOVERED
- ⊙ PRIMARY MONUMENT SET THIS SURVEY
- ⊕ PRIMARY MONUMENT RECOVERED
- SECONDARY MONUMENT SET THIS SURVEY
- SECONDARY MONUMENT RECOVERED
- SURVEYED
- - - UNSURVEYED
- - - EASEMENT
- - - TIE BETWEEN LOTS
- O.H.W. ORDINARY HIGH WATER
- (R) RECORD DATA, SEE NOTE

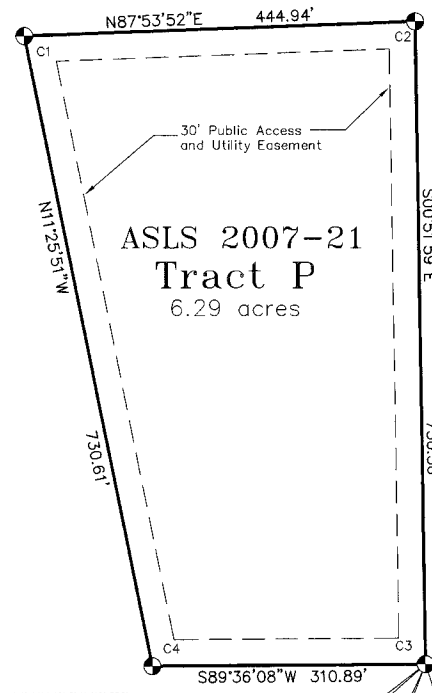


DATE OF SURVEY: BEGINNING June 19, 2009 ENDING June 30, 2009	NAME OF SURVEYOR: Mullikin Surveys P.O. Box 790 Homer, AK 99603-0790
STATE OF ALASKA DEPARTMENT OF NATURAL RESOURCES, DIVISION OF MINING, LAND, AND WATER ANCHORAGE, ALASKA	
ALASKA STATE LAND SURVEY 2007-21	
BEARPAW REMOTE RECREATIONAL CABIN SITES CREATING TRACTS A THROUGH P WITHIN UNSURVEYED SECTIONS 2, 3, 19, 28, 29, 32 and 36, T.10S., R.17W., and UNSURVEYED SECTIONS 5, 6, 13 and 17, T.10S., R.16W., FAIRBANKS MERIDIAN, ALASKA	
FAIRBANKS RECORDING DISTRICT	
DRAWN BY: TAL	APPROVAL RECOMMENDED: <i>William S. Brown</i> for <i>WJH</i>
DATE: 12-31-2009	STATEWIDE PLATING SUPERVISOR, DATE
SCALE: 1" = 100'	CHECKED FIELD BOOK FILE NO: DEM, JVM 310A-310F ASLS 20070021

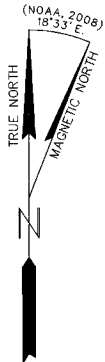
Fairbanks 2011-10

BEARPAW REMOTE RECREATIONAL CABIN SITES

UNSUBDIVIDED
STATE OF ALASKA



ASLS 2007-21
Tract P
6.29 acres



LESSEE CERTIFICATE

I, the undersigned, hereby certify that I am the lessee as shown hereon. I hereby approve this survey and plat.

TRACT No. "P", ADL No. 418140

George F. Koethke
George F. Koethke
7480 Clairborne Circle
Anchorage, AK 99502
Date: Sept. 1, 2010

NOTARY'S ACKNOWLEDGEMENT

Subscribed and sworn to before me this 1 day of September, 2010.

For: *Monica Koethke*
Lessee

Joseph L. Pollock
Notary Public for Alaska
My Commission Expires 4/1/11



UNSUBDIVIDED
STATE OF ALASKA

C3 Tr. P
Lat. 64°04'41.41823" N
Long. 150°51'29.93375" W
NAD83
Lat. 64°04'43.23915" N
Long. 150°51'21.46313" W
NAD27

C3 Tract P to C1 Tract M
(Mean True NAD83) (Tie)
N88°36'29"E
18007.82'

C3 Tract P to C2 Tract O
(Mean True NAD83) (Tie)
S81°13'15"E
4633.12'

C3 Tract P to C1 Tract J
(Mean True NAD83) (Tie)
S71°38'58"E
42954.53'

C3 Tract P to C1 Tract H
(Mean True NAD83) (Tie)
S57°24'09"E
22715.17'

C3 Tract P to C1 Tract I
(Mean True NAD83) (Tie)
S61°11'33"E
24613.18'

C3 Tract P to C1 Tract B
(Mean True NAD83) (Tie)
S52°42'05"W
22665.99'

C3 Tract P to C1 Tract C
(Mean True NAD83) (Tie)
N48°52'12"E
23598.72'

C3 Tract P to C1 Tract E
(Mean True NAD83) (Tie)
S24°41'11"W
25359.27'

C3 Tract P to C1 Tract F
(Mean True NAD83) (Tie)
N27°24'59"E
23672.16'

C3 Tract P to C1 Tract G
(Mean True NAD83) (Tie)
S17°48'00"E
26830.55'

TRACT P MONUMENTATION

Cor. #	Corner Marking	Description	Accessories
1	ASLS 2007-21 C1 TR P 2009 4469-S	Set 3 1/4" alum. cap, on 2" I.D. alum. pipe, 0.2' above ground.	Set: Wood post, N, 0.9' 4" Spruce, S29°W, 44.17' 5" Birch, S67-1/2°W, 94.08' 5" Spruce, N65°W, 67.35' Magnet at base
2	ASLS 2007-21 C2 TR P 2009 4469-S	Set 3 1/4" alum. cap, on 2" I.D. alum. pipe, 0.2' above ground.	Set: Wood post, N, 1.0' 6" Spruce, N39°E, 26.30' 8" Birch(twin), S75°E, 10.20' 5" Spruce, S77-1/2°W, 46.66' Magnet at base
3	ASLS 2007-21 C3 TR P 2009 4469-S	Set 3 1/4" alum. cap, on 2" I.D. alum. pipe, 0.1' above ground.	Set: Wood post, W, 1.0' 13" Birch, N22°E, 23.84' 9" Birch, S62-1/2°E, 32.63' 10" Birch, S57°W, 20.21' Magnet at base
4	ASLS 2007-21 C4 TR P 2009 4469-S	Set 3 1/4" alum. cap, on 2" I.D. alum. pipe, 0.1' above ground.	Set: Wood post, E, 1.0' 12" Birch, S90°E, 12.25' 9" Birch, S13°W, 13.54' 4" Spruce, N28°W, 41.73' Magnet at base

All Bearing Trees set this survey have metal tag and are marked "X" "BT"

LEGEND

- BLM MONUMENT RECOVERED
- PRIMARY MONUMENT SET THIS SURVEY
- PRIMARY MONUMENT RECOVERED
- SECONDARY MONUMENT SET THIS SURVEY
- SECONDARY MONUMENT RECOVERED
- SURVEYED
- UNSURVEYED
- EASEMENT
- TIE BETWEEN LOTS
- O.H.W. ORDINARY HIGH WATER
- RECORD DATA, SEE NOTE

ASLS 90-94
PLAT 92-29

TRACT C

UNSUBDIVIDED
STATE OF ALASKA

ASLS 2007-21
Tract O
17.14 acres

TRACT O MONUMENTATION

Cor. #	Corner Marking	Description	Accessories
1	ASLS 2007-21 WC C1 TR O 2009 4469-S	Set 3 1/4" alum. cap, on 2" I.D. alum. pipe, 0.3' above ground, rock backfill material brought in from offsite.	Set: Wood post, SW, 1.1' 4" Spruce, N46°E, 28.13' 4" Spruce, S28-1/2°W, 10.23' 9" Spruce, N43°W, 20.58' Magnet at base
2	ASLS 2007-21 WC C2 TR O 2009 4469-S	Set 3 1/4" alum. cap, on 2" I.D. alum. pipe, 0.2' above ground, rock backfill material brought in from offsite.	Set: Wood post, NW, 1.1' 4" Spruce, S88-1/2°E, 36.37' 4" Spruce, S5°E, 39.60' 3" Tamarack, N61°W, 27.14' Magnet at base
3	ASLS 2007-21 WC C3 TR O 2009 4469-S	Set 3 1/4" alum. cap, on 2" I.D. alum. pipe, 0.2' above ground.	Set: Wood post, NW, 1.0' 10" Spruce, N69-1/2°E, 16.63' 12" Spruce, S26-1/2°W, 30.60' 11" Spruce, N73-1/2°W, 16.54' Magnet at base

All Bearing Trees set this survey have metal tag and are marked "X" "BT"

LESSEE CERTIFICATE

I, the undersigned, hereby certify that I am the lessee as shown hereon. I hereby approve this survey and plat.

TRACT No. "O", ADL No. 418141

Monica Koethke
Monica Koethke
7480 Clairborne Circle
Anchorage, AK 99502
Date: September 1, 2010

NOTARY'S ACKNOWLEDGEMENT

Subscribed and sworn to before me this 1 day of September, 2010.

For: *Monica Koethke*
Lessee

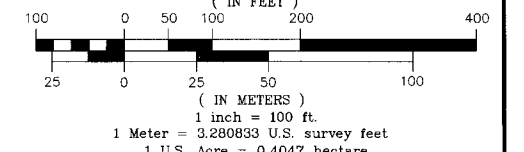
Joseph L. Pollock
Notary Public for Alaska
My Commission Expires 4/1/11



RECORD PLAT (Fairbanks Recording District)

Recording No. 88-38
Plat Name ASLS 87-124

GRAPHIC SCALE



DATE OF SURVEY: BEGINNING June 19, 2009 ENDING June 30, 2009	NAME OF SURVEYOR: Mullikin Surveys P.O. Box 790 Homer, AK 99603-0790
STATE OF ALASKA DEPARTMENT OF NATURAL RESOURCES, DIVISION OF MINING, LAND, AND WATER ANCHORAGE, ALASKA	
ALASKA STATE LAND SURVEY 2007-21	
BEARPAW REMOTE RECREATIONAL CABIN SITES CREATING TRACTS A THROUGH P WITHIN UNSURVEYED SECTIONS 2, 3, 19, 28, 29, 32 and 36, T.10S., R.17W., and UNSURVEYED SECTIONS 5, 6, 13 and 17, T.10S., R.16W., FAIRBANKS MERIDIAN, ALASKA	
FAIRBANKS RECORDING DISTRICT	
DRAWN BY: TAL	APPROVAL RECOMMENDED:
DATE: 12-31-2009	STATEWIDE PLATTING SUPERVISOR, DATE: <u>1/1/11</u>
SCALE: 1" = 100'	CHECKED: <u>William S. Blum</u> FILE NO: ASLS 20070021
DEM, JVM	310A-310F

Fairbanks 2011-10

SHEET 7 OF 8

BEARPAW REMOTE RECREATIONAL CABIN SITES

TRACT E MONUMENTATION

Cor. #	Corner Marking	Description	Accessories
1	ASLS 2007-27 C1 TR E 2009 4469-S	Set 3 1/4" alum. cap, on 2" I.D. alum. pipe, 0.1' above ground.	Set: Wood post, SE, 1.0', 9" Spruce, S89-1/2°E, 64.96' 6" Birch, S40°W, 19.95' 9" Spruce, N8-1/2°W, 65.44' Magnet at base
2	ASLS 2007-27 C2 TR E 2009 4469-S	Set 3 1/4" alum. cap, on 2" I.D. alum. pipe, 0.2' above ground.	Set: Wood post, N., 0.7', 7" Birch, N26°E, 26.95' 6" Birch, S52°E, 27.85' 7" Birch, N77°W, 54.72' Magnet at base
3	See Corner 2 Tract D		
4	See Corner 1 Tract D		

TRACT F MONUMENTATION

Cor. #	Corner Marking	Description	Accessories
1	ASLS 2007-27 C1 TR F 2009 4469-S	Set 3 1/4" alum. cap, on 2" I.D. alum. pipe, 0.1' above ground.	Set: Wood post 6" Birch, N45°E, 41.50' 6" Birch, S22°E, 13.95' 7" Spruce, N73-1/2°W, 12.87' Magnet at base
2	ASLS 2007-27 C2 TR F 2009 4469-S	Set 3 1/4" alum. cap, on 2" I.D. alum. pipe, 0.1' above ground.	Set: Wood post, N., 1.0', 5" Birch, S89-1/2°E, 17.95' 15" Birch, S37°W, 20.15' 10" Birch, N32°W, 13.79' Magnet at base
3	ASLS 2007-27 TR F C3 2009 4469-S	Set 3 1/4" alum. cap, on 2" I.D. alum. pipe, 0.1' above ground.	Set: Wood post, E., 1.0', 6" Birch, N19°E, 18.78' 12" Birch, S7°E, 19.41' 7" Birch, N70°W, 23.30' Magnet at base
4	ASLS 2007-27 TR F C4 2009 4469-S	Set 3 1/4" alum. cap, on 2" I.D. alum. pipe, 0.1' above ground.	Set: Wood post 8" Birch, N55°E, 14.84' 9" Birch, S10-1/2°W, 22.99' 11" Birch, N.58°W, 15.30' Magnet at base

TRACT G MONUMENTATION

Cor. #	Corner Marking	Description	Accessories
1	ASLS 2007-27 WC MC C1 TR G 2009 4469-S	Set 3 1/4" alum. cap, on 2" I.D. alum. pipe, flush with ground.	Set: Wood Post, SE, 1.0' 10" Spruce, S51°E, 32.65' 4" Birch, S48°E, 22.78' 6" Spruce, N1°W, 27.03' Magnet at base
2	ASLS 2007-27 WC MC C2 TR G 2009 4469-S	Set 3 1/4" alum. cap, on 2" I.D. alum. pipe, 0.4' above ground.	Set: Wood post, N., 1.0', 8" Birch, S9°W, 62.24' 17" Spruce, S51-1/2°W, 54.13' 6" Spruce, N85°W, 47.30' 6" Birch, N50°W, 51.47' Magnet at base
3	WC T10S S36 R17W S1 T11S 1982 BLM	Found 3 1/4" alum. cap, on 3/4" alum. drive rod, 1.3' above ground.	Found: Metal Triangle on alum. drive rod, W, 6.75' Original BTs destroyed by beavers Set: Wood post, N., 1.1', 4" Spruce, S1-1/2°W, 39.51' 24" Spruce, N72°W, 43.00' 7" Spruce, N21-1/2°W, 29.67'
4	ASLS 2007-27 WC MC C4 TR G 2009 4469-S	Set 3 1/4" alum. cap, on 2" I.D. alum. pipe, 0.3' above ground.	Set: Wood post, NNE, 1.0', 8" Birch(twin), N16°E, 10.38' 10" Spruce, S72°E, 26.35' 6" Spruce, S34-1/2°W, 43.55' Magnet at base
	WC T10S S35 R17W S2 T11S 1982 BLM	Found 3 1/4" alum. cap, on 3/4" alum. drive rod, 1.0' above ground.	Found: Orange metal triangle on drive rod, W, 6.5' 12" Birch, N30°W, 37.20' Set: 5" Birch, N24°E, 36.21' 10" Birch, S40-1/2°W, 16.40'
	T10S R17W R16W S36 S31 S1 S6 T11S 1982 BLM	Found 3 1/4" alum. cap, on 3/4" alum. drive rod, 0.8' above ground, in good condition.	Found: Orange metal triangle on drive rod, S., 6.5' 9" Spruce, N43°E, 34.27' 13" Spruce, S43°E, 29.94' 11" Spruce, S29-1/2°W, 23.19' 11" Spruce, N14-1/2°W, 26.66'

TRACT H MONUMENTATION

Cor. #	Corner Marking	Description	Accessories
1	ASLS 2007-27 C1 TR H 2009 4469-S	Set 3 1/4" alum. cap, on 2" I.D. alum. pipe, 0.2' above ground.	Set: Fiberglass post, N, 1.0' 9" Spruce, S76°E, 35.43' 11" Spruce, S69°W, 32.05' 12" Spruce, N11-1/2°W, 23.55' Magnet at base
2	ASLS 2007-27 WC MC C2 TR H 2009 4469-S	Set 3 1/4" alum. cap, on 2" I.D. alum. pipe, 0.2' above ground.	Set: Steel post, N, 0.7' 16" Spruce, S53°W, 39.04' 13" Spruce, N85°W, 49.76' 13" Spruce, N45-1/2°W, 29.62' Magnet at base
3	ASLS 2007-27 WC MC C3 TR H 2009 4469-S	Set 3 1/4" alum. cap, on 2" I.D. alum. pipe, 0.3' above ground.	Set: Steel post, 15" Spruce, N84°E, 45.24' 16" Spruce, N37°W, 60.29' 6" Birch, N4-1/2°W, 54.11' Magnet at base

TRACT I MONUMENTATION

Cor. #	Corner Marking	Description	Accessories
1	ASLS 2007-27 C1 TR I 2009 4469-S	Set 3 1/4" alum. cap, on 2" I.D. alum. pipe, 0.2' above ground.	Set: Wood post 8" Birch, S45-1/2°E, 35.20' 6" Spruce, S37°W, 28.23' 9" Birch, N81-1/2°W, 69.81' Magnet at base
2	ASLS 2007-27 C2 TR I 2009 4469-S	Set 3 1/4" alum. cap, on 2" I.D. alum. pipe, 0.2' above ground.	Set: Wood post, N, 1.3' 6" Spruce, N85°E, 31.97' 6" Spruce, S48-1/2°W, 32.35' 6" Birch, N19-1/2°W, 20.18' Magnet at base
3	ASLS 2007-27 WC MC C3 TR I 2009 4469-S	Set 3 1/4" alum. cap, on 2" I.D. alum. pipe, 0.3' above ground.	Set: Wood post, N, 1.0' 10" Spruce, N4°E, 9.44' 6" Spruce, S80-1/2°W, 34.31' 6" Spruce, S65°E, 32.12' 9" Spruce, N46-1/2°W, 17.86' Magnet at base
4	ASLS 2007-27 WC MC C4 TR I 2009 4469-S	Set 3 1/4" alum. cap, on 2" I.D. alum. pipe, 0.2' above ground.	Set: Wood post, SE, 1.0' 13" Spruce, N31°E, 37.33' 9" Birch, N85°W, 19.38' 12" Spruce, N19-1/2°W, 16.81' Magnet at base

All Bearing Trees set this survey have metal tag and are marked "X" "BT"

2011-10
Plat #
Fairbanks
Rec Dist
Date 1-24-2011
Time 2:29p

DATE OF SURVEY: BEGINNING June 19, 2009 ENDING June 30, 2009	NAME OF SURVEYOR: Mullikin Surveys P.O. Box 790 Homer, AK 99603-0790
STATE OF ALASKA DEPARTMENT OF NATURAL RESOURCES, DIVISION OF MINING, LAND, AND WATER ANCHORAGE, ALASKA	
ALASKA STATE LAND SURVEY 2007-21	
BEARPAW REMOTE RECREATIONAL CABIN SITES CREATING TRACTS A THROUGH P WITHIN UNSURVEYED SECTIONS 2, 3, 19, 28, 29, 32 and 36, T.10S., R.17W., and UNSURVEYED SECTIONS 5, 6, 13 and 17, T.10S., R.16W., FAIRBANKS MERIDIAN, ALASKA	
FAIRBANKS RECORDING DISTRICT	
DRAWN BY: TAL	APPROVAL RECOMMENDED:
DATE: 12-31-2009	William S. Brown for 1/11/11 STATEWIDE PLATTING SUPERVISOR, DATE
SCALE: 1" = 100'	CHECKED: DEM, JVM FIELD BOOK: 310A-310F FILE NO: ASLS 20070021