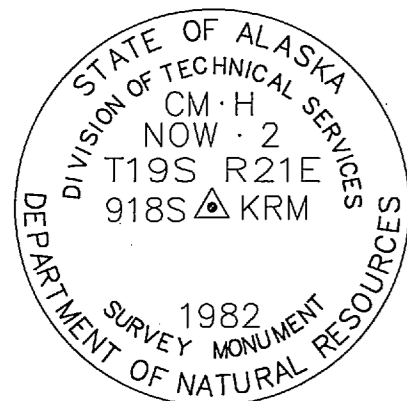


NOWITNA RIVER REMOTE RECREATIONAL CABIN SITES INDEX SHEET

RECOVERED MONUMENTS

CM 2

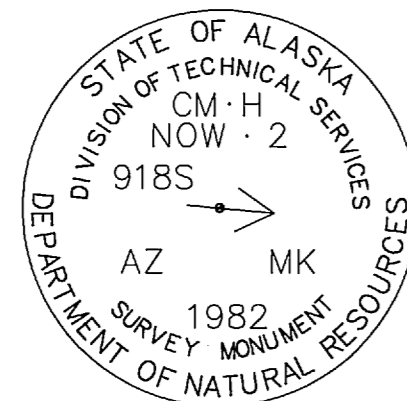


3 1/4" ALUMINUM DISK ON A 2 1/2" ALUMINUM POST FLUSH WITH THE GROUND

CM2

NAD 27: Lat. 63° 49' 46.60" N.
Long. 154° 45' 29.21" W.
NAD 83: Lat. 63° 49' 44.46" N.
Long. 154° 45' 37.75" W.

CM 2 AZ MK



3 1/4" ALUMINUM DISK ON A 2 1/2" ALUMINUM POST FLUSH WITH THE GROUND

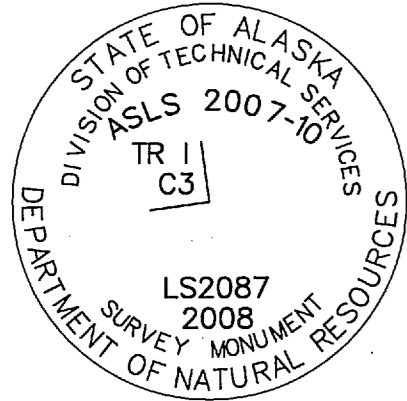
CM2 AZ MK

NAD 27: Lat. 63° 49' 47.95" N.
Long. 154° 45' 40.59" W.
NAD 83: Lat. 63° 49' 45.81" N.
Long. 154° 45' 49.13" W.

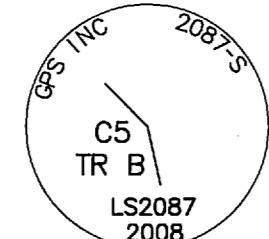
MONUMENTS SET THIS SURVEY

TYPICAL PRIMARY MONUMENT

TYPICAL SECONDARY MONUMENT



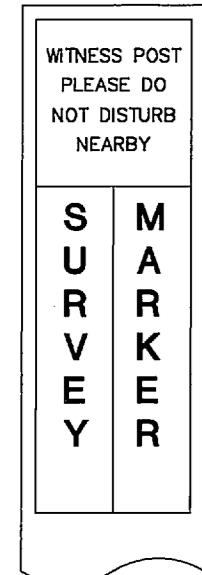
3 1/4" ALUMINUM DISK ON A 3/4" ALUMINUM PIPE, 36" LONG, WITH A MAGNET IN A GREY PLASTIC CASE ALONGSIDE THE PIPE



2" ALUMINUM CAP ON A 5/8" REBAR, 36" LONG

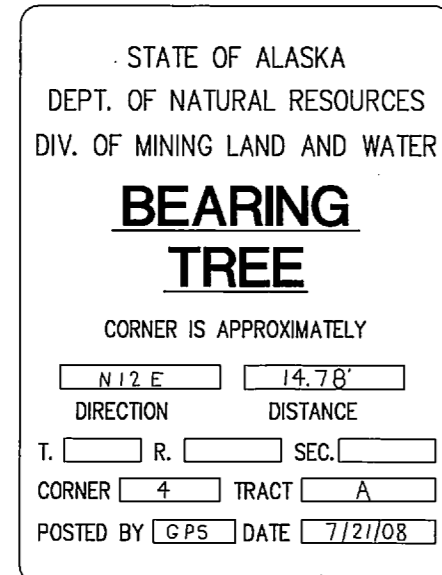
TYPICAL WITNESS POST

AN ORANGE FIBERGLASS REINFORCED CARBONITE POST, 6 FT. LONG SET AT A CARDINAL DIRECTION WITHIN 1 FT. OF ALL PRIMARY MONUMENTS



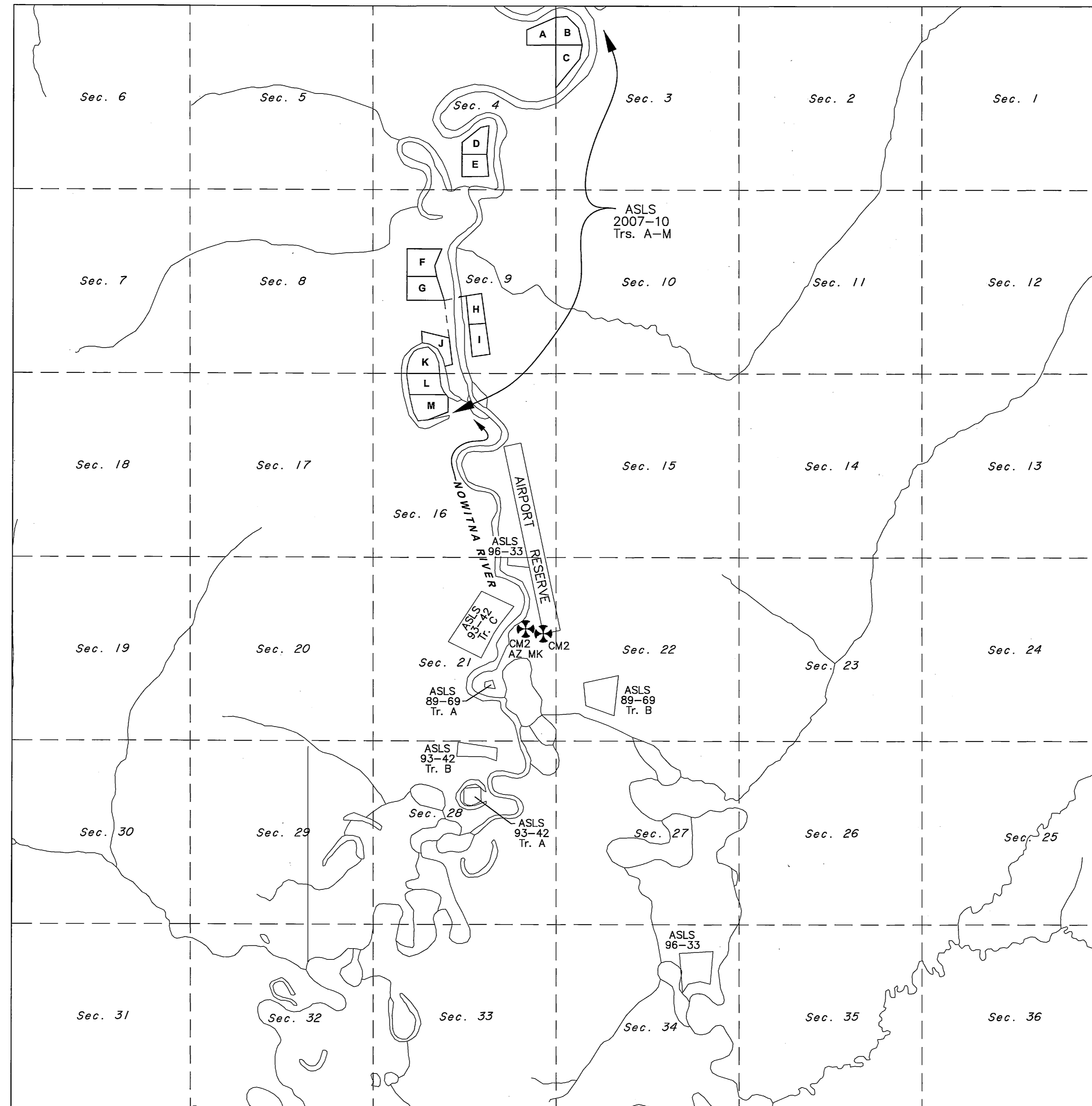
TYPICAL BEARING TREE TAG

AN YELLOW 4 1/2" x 6" ALUMINUM TAG SET AT CHEST HEIGHT TREES ARE NOT SCRIBED



NOTES

- THIS SURVEY WAS ACCOMPLISHED IN ACCORDANCE WITH AS 38.05.600, GSC 742, and RRCS SI 2007-10.
- THE BASIS OF BEARING FOR THIS PLAT WAS DETERMINED BY HIGH PRECISION GPS SURVEY; USING TRIMBLE SSE AND SSI 4000 CARRIER PHASE RECEIVERS, DIFFERENTIALLY CORRECTED AND PROCESSED USING GPSURVEY V2.35A SOFTWARE.
- BASIS OF COORDINATES WAS AN NGS OPUS SOLUTION FOR STATE OF ALASKA DEPARTMENT OF NATURAL RESOURCES CADASTRAL SURVEY MONUMENT CM-2. A TIE WAS MADE TO CM-2 AZMK FOR A QUALITY CONTROL CHECK. THE OFFICIAL SURVEY RECORD FOR THESE MONUMENTS IS THE CADASTRAL CONTROL SURVEY PLAT RECORDED IN THE NULATO RECORDING DISTRICT AS PLAT NO. 90-01.
- ALL BEARINGS SHOWN ARE TRUE BEARINGS AS ORIENTED TO THE BASIS OF BEARING AND DISTANCES SHOWN ARE REDUCED TO HORIZONTAL FIELD DISTANCES. BEARINGS AND DISTANCES SHOWN ON THIS PLAT ARE NAD 27. ALL BEARINGS ARE MEAN GEODETIC UNLESS OTHERWISE NOTED.
- THE ACCURACY OF THIS SURVEY IS GREATER THAN 1:5000.
- ALL PARCELS OF LAND OWNED BY THE STATE OF ALASKA, LOCATED WITHIN 50.00 FEET OF, OR BISECTED BY A SURVEYED OR PROTRACTED SECTION LINE, ARE SUBJECT TO A 50 FOOT (50') EASEMENT, ON EACH SIDE OF THE SECTION LINE, WHICH IS RESERVED TO THE STATE OF ALASKA FOR PUBLIC HIGHWAYS UNDER AS 19.10.010.
- THE EXISTING LESSEES' CLAIM CORNERS WERE RECOVERED AND USED TO CONTROL THE LOCATION OF THE TRACT BOUNDARIES.
- THE NATURAL MEANDERS OF THE LINE OF ORDINARY HIGH WATER (OHW) FORM THE TRUE BOUNDS OF TRACTS J-M. THE APPROXIMATE LINE OF OHW, AS SHOWN, IS FOR AREA COMPUTATIONS ONLY, WITH THE TRUE CORNERS BEING ON THE EXTENSION OF THE SIDELINES AND THEIR INTERSECTION WITH THE NATURAL MEANDERS.
- THERE IS A 100-FOOT BUILDING SETBACK FROM THE ORDINARY HIGH WATER LINE OF ALL WATER BODIES.



LEGEND:

- PRIMARY MONUMENT RECOVERED
- PRIMARY MONUMENT SET THIS SURVEY
- SECONDARY MONUMENT SET
- PROTRACTED SECTION LINES
- SURVEYED LINES
- TIE

SHEET INDEX

TRACT	ADL No.	SHEET
A	ADL 230447	2
B	ADL 230448	2
C	ADL 230449	2
D	ADL 230450	2
E	ADL 230451	2
F	ADL 230452	2
G	ADL 230453	2
H	ADL 229927	3
I	ADL 228350	3
J	ADL 229936	3
K	ADL 230454	3
L	ADL 230455	3
M	ADL 230456	3



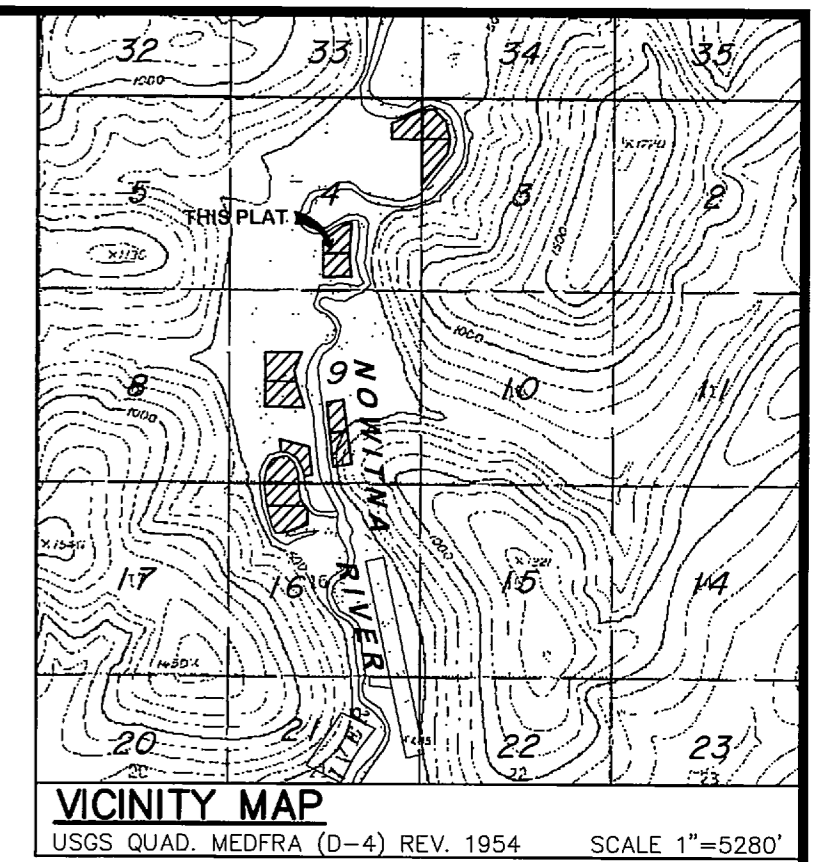
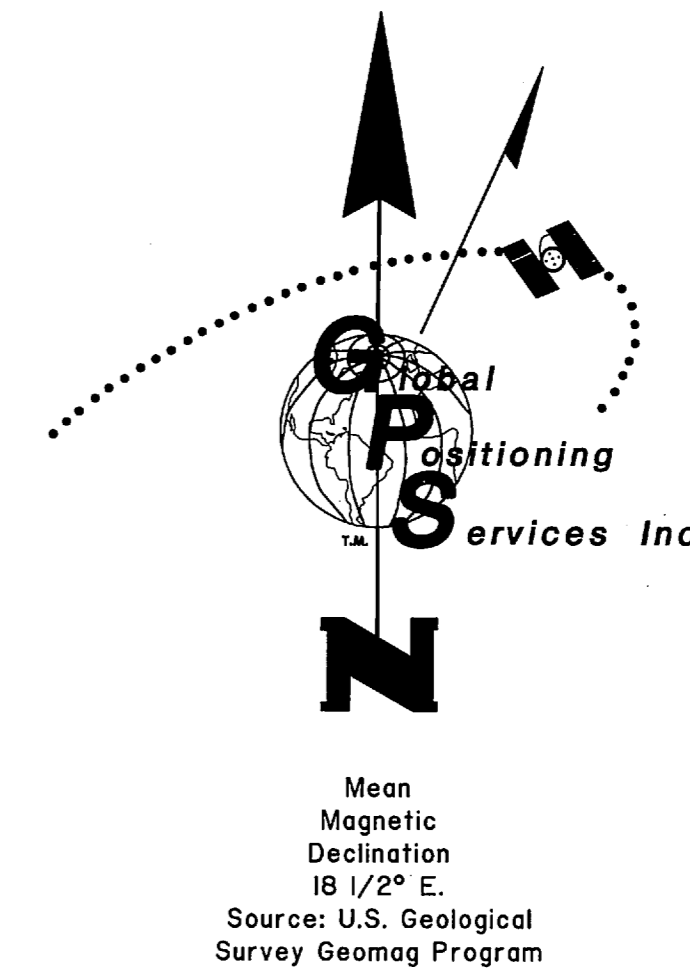
Nulato 2009-1

SURVEYOR'S CERTIFICATE

I HEREBY CERTIFY THAT I AM PROPERLY REGISTERED AND LICENSED TO PRACTICE LAND SURVEYING IN THE STATE OF ALASKA, THAT THIS PLAT REPRESENTS A SURVEY MADE BY ME OR UNDER MY DIRECT SUPERVISION, THAT THE MONUMENTS SHOWN HEREON ACTUALLY EXIST AS DESCRIBED, AND THAT ALL DIMENSIONS AND OTHER DETAILS ARE CORRECT.

Stanley E. Sears
DATE: 8/25/08
REGISTERED LAND SURVEYOR NO. LS-2087

SHEET 1 OF 3



CERTIFICATE OF OWNERSHIP AND DEDICATION

I, THE UNDERSIGNED, HEREBY CERTIFY THAT I AM THE DIRECTOR, DIVISION OF MINING, LAND AND WATER AND THAT THE STATE OF ALASKA IS THE OWNER OF ASLS 2007-10, AS SHOWN HEREON. I HEREBY APPROVE THIS SURVEY AND PLAT FOR THE STATE OF ALASKA, AND DEDICATE FOR PUBLIC OR PRIVATE USE AS NOTED, ALL EASEMENTS, PUBLIC UTILITY AREAS, AND RIGHTS-OF-WAY AS SHOWN AND DESCRIBED HEREON.
Jan 28, 2009
DATE: 1/28/09
DIRECTOR, DIVISION OF MINING, LAND AND WATER

NOTARY'S ACKNOWLEDGEMENT

SUBSCRIBED AND SWORN TO BEFORE ME THIS 28th DAY OF JANUARY, 2009.
FOR: Gerald Jermias

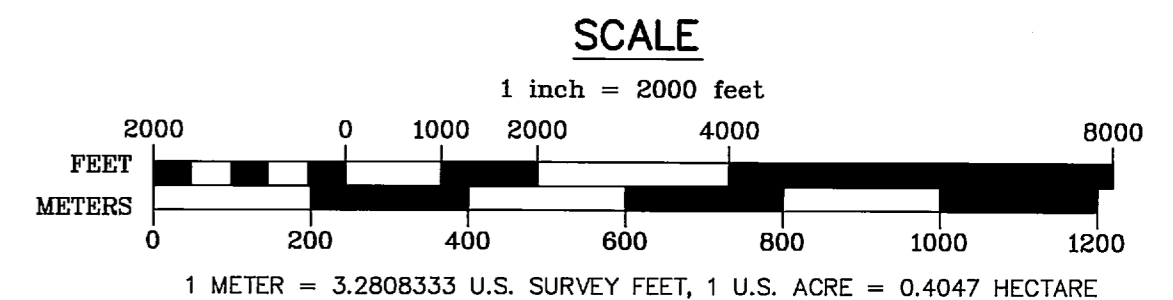
Notary Public for Alaska
My Commission Expires 12/31/10

PLAT APPROVAL

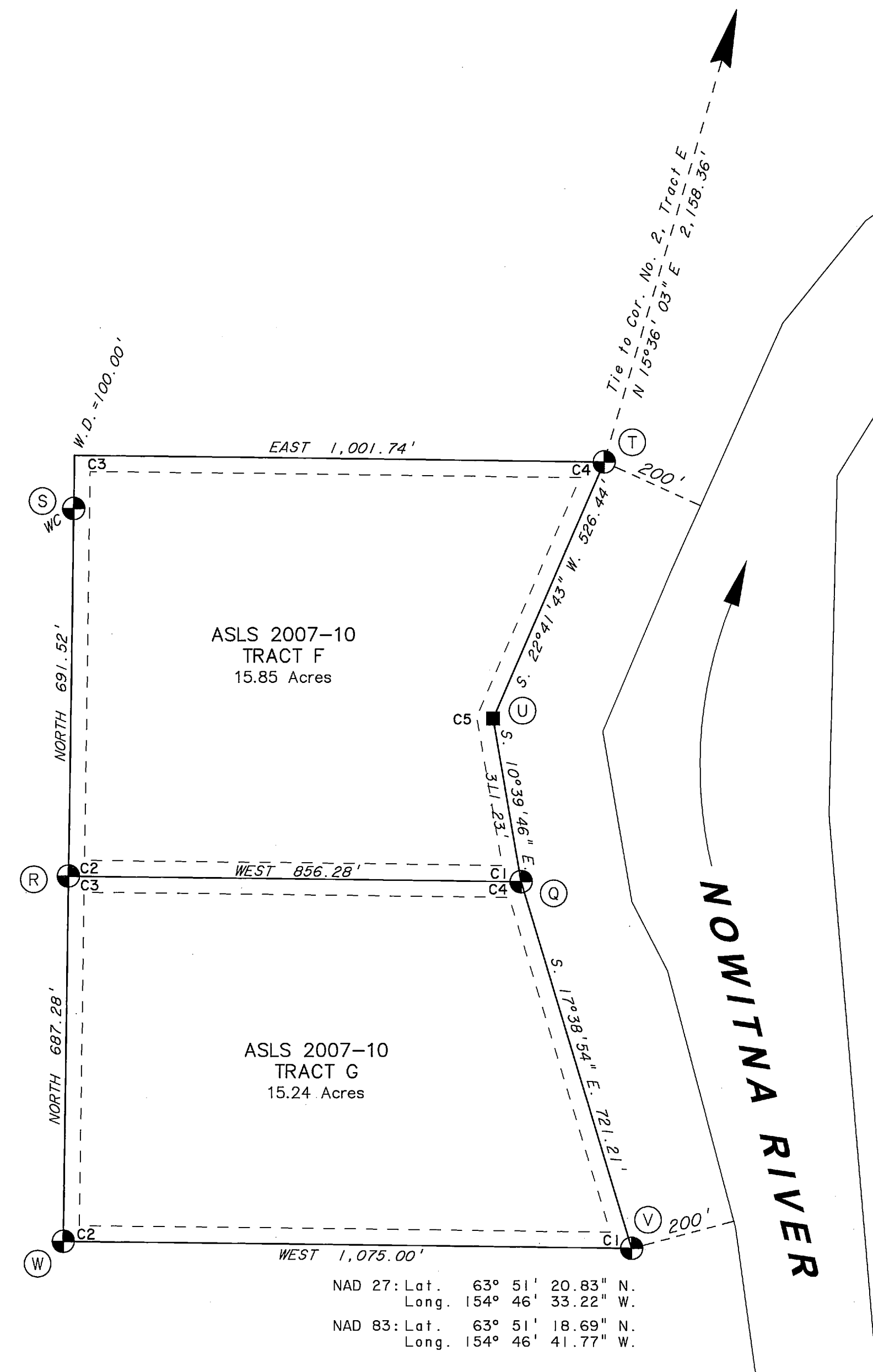
THIS PLAT IS APPROVED BY THE COMMISSIONER OF THE DEPARTMENT OF NATURAL RESOURCES, OR THE COMMISSIONER'S DESIGNEE, IN ACCORDANCE WITH AS 40.15.

Jan 28, 2009
DATE

BY APPROVAL OF THIS PLAT, THE COMMISSIONER OF THE DEPARTMENT OF NATURAL RESOURCES HEREBY ACCEPTS FOR PUBLIC USE AND PUBLIC PURPOSES THE REAL PROPERTY DEDICATED TO THE PUBLIC HEREON, INCLUDING EASEMENTS, RIGHTS-OF-WAY, ALLEYS AND ROADWAYS. THE ACCEPTANCE OF SUCH DEDICATED AREAS FOR PUBLIC USE AND PUBLIC PURPOSES DOES NOT OBLIGATE THE DEPARTMENT, ANY GOVERNING BODY, OR THE PUBLIC TO CONSTRUCT, OPERATE, MAINTAIN OR MANAGE IMPROVEMENTS.



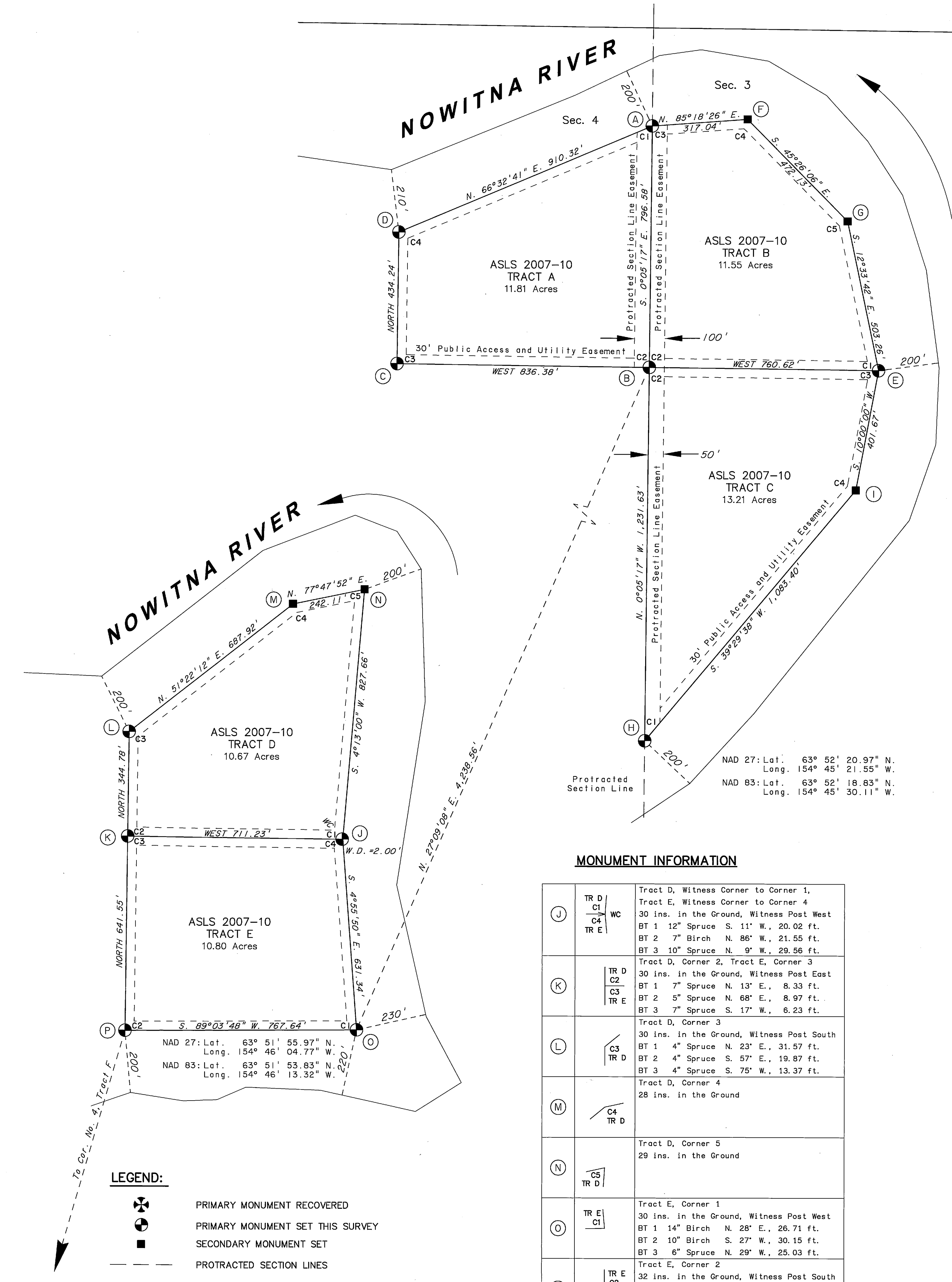
DATE OF SURVEY Beginning June 24, 2008 Ending July 28, 2008	Stanley E. Sears Global Positioning Services, Inc. 2603 Blueberry Rd. Anchorage, Alaska 99503
STATE OF ALASKA DEPARTMENT OF NATURAL RESOURCES DIVISION OF MINING, LAND & WATER ANCHORAGE, ALASKA	
ALASKA STATE LAND SURVEY NO. 2007-10	
NOWITNA RIVER REMOTE RECREATIONAL CABIN SITES CREATING TRACTS A THROUGH M	
WITHIN PROTRACTED SECTIONS 3, 4, 9 AND 16, T. 19 S., R. 21 E. KATEEL RIVER MERIDIAN, ALASKA NULATO RECORDING DISTRICT	
DRAWN BY: LSV	APPROVAL RECOMMENDED
DATE: 8/25/08	W.C.S. [Signature] FOR 1-21-09
SCALE: 1" = 2000'	CHECKED: S.E.S. DATE
	DNR FILE NO. ASLS 20070010



NAD 27: Lat. 63° 51' 20.83" N.
Long. 154° 46' 33.22" W.
NAD 83: Lat. 63° 51' 18.69" N.
Long. 154° 46' 41.77" W.

MONUMENT INFORMATION

Q	TR F C1 C4 TR G	Tract F, Corner 1, Tract G, Corner 4 30 ins. in the Ground, Witness Post West BT 1 4" Spruce N. 41° E., 19.88 ft. BT 2 5" Spruce S. 76° E., 51.17 ft. BT 3 4" Spruce S. 86° W., 13.66 ft.
R	TR F C2 C3 TR G	Tract F, Corner 2, Tract G, Corner 3 31 ins. in the Ground, Witness Post North BT 1 4" Spruce S. 50° E., 13.24 ft. BT 2 4" Spruce S. 32° W., 19.81 ft. BT 3 3" Spruce S. 71° W., 17.55 ft.
S	C3 TR F	Tract F, Witness Corner to Corner 3 29 ins. in the Ground, Witness Post South BT 1 3" Spruce S. 48° E., 17.55 ft. BT 2 4" Spruce S. 9° W., 20.35 ft. BT 3 3" Spruce N. 47° W., 15.55 ft.
T	C4 TR F	Tract F, Corner 4 30 ins. in the Ground, Witness Post West BT 1 11" Birch N. 26° E., 21.48 ft. BT 2 9" Spruce S. 45° E., 38.98 ft. BT 3 11" Spruce S. 49° W., 36.63 ft.
U	C5 TR F	Tract F, Corner 5 32 ins. in the Ground
V	TR G C1	Tract G, Corner 1 33 ins. in the Ground, Witness Post South BT 1 12" Spruce N. 8° E., 21.53 ft. BT 2 5" Spruce S. 64° E., 19.52 ft. BT 3 7" Spruce S. 35° W., 36.85 ft.
W	TR G C2	Tract G, Corner 2 28 ins. in the Ground, Witness Post South BT 1 5" Spruce N. 10° E., 12.98 ft. BT 2 5" Spruce S. 16° E., 20.32 ft. BT 3 6" Spruce N. 87° W., 14.30 ft.



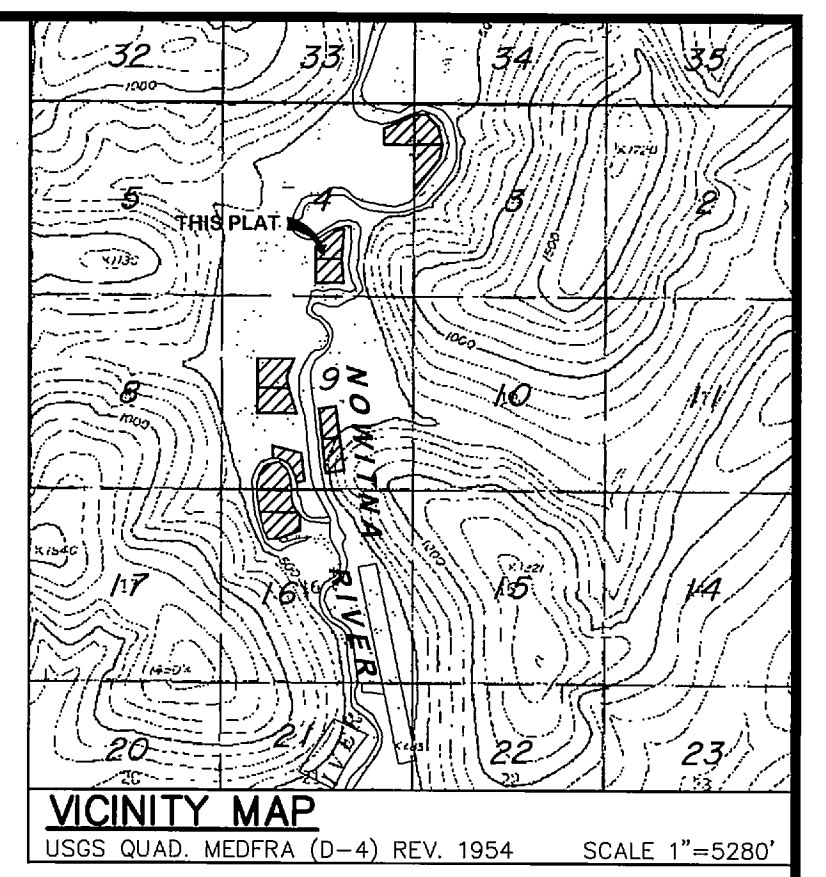
LEGEND:

- PRIMARY MONUMENT RECOVERED
- PRIMARY MONUMENT SET THIS SURVEY
- SECONDARY MONUMENT SET
- PROTRACTED SECTION LINES
- SURVEYED LINES
- TIE
- MONUMENT IDENTIFIER

MONUMENT INFORMATION

J	TR D C1 C4 TR E	Tract D, Witness Corner to Corner 1, Tract E, Witness Corner to Corner 4 30 ins. in the Ground, Witness Post West BT 1 12" Spruce S. 11° W., 20.02 ft. BT 2 7" Birch N. 86° W., 21.55 ft. BT 3 10" Spruce N. 9° W., 29.56 ft.
K	TR D C2 C3 TR E	Tract D, Corner 2, Tract E, Corner 3 30 ins. in the Ground, Witness Post East BT 1 7" Spruce N. 13° E., 8.33 ft. BT 2 5" Spruce N. 68° E., 8.97 ft. BT 3 7" Spruce S. 17° W., 6.23 ft.
L	C3 TR D	Tract D, Corner 3 30 ins. in the Ground, Witness Post South BT 1 4" Spruce N. 23° E., 31.57 ft. BT 2 4" Spruce S. 57° E., 19.87 ft. BT 3 4" Spruce S. 75° W., 13.37 ft.
M	C4 TR D	Tract D, Corner 4 28 ins. in the Ground
N	C5 TR D	Tract D, Corner 5 29 ins. in the Ground
O	TR E C1	Tract E, Corner 1 30 ins. in the Ground, Witness Post West BT 1 14" Birch N. 28° E., 26.71 ft. BT 2 10" Birch S. 27° W., 30.15 ft. BT 3 6" Spruce N. 29° W., 25.03 ft.
P	TR E C2	Tract E, Corner 2 32 ins. in the Ground, Witness Post South BT 1 11" Birch N. 52° E., 18.55 ft. BT 2 9" Spruce S. 55° W., 24.02 ft. BT 3 13" Spruce N. 2° W., 25.87 ft.

Nulato 2009-1

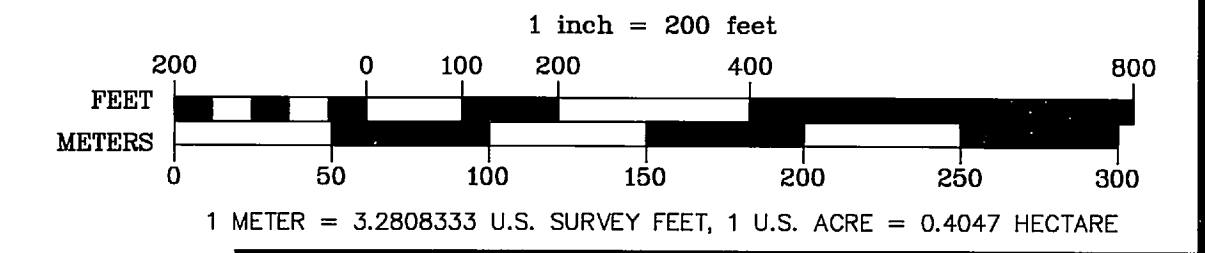


MONUMENT INFORMATION

A	C1 C3 TR A TR B	Tract A, Corner 1, Tract B, Corner 3 31 ins. in the Ground, Witness Post South BT 1 7" Birch N. 12° E., 19.18 ft. BT 2 8" Birch S. 67° E., 14.26 ft. BT 3 9" Birch S. 23° W., 18.83 ft.
B	TR A C2 C3 TR C	Tr. A, C2, Tr. B, C2, Tr. C, C2 31 ins. in the Ground, Witness Post North BT 1 4" Spruce N. 39° E., 15.71 ft. BT 2 5" Spruce N. 85° E., 18.33 ft. BT 3 4" Spruce S. 34° W., 12.28 ft.
C	TR A C3	Tract A, Corner 3 31 ins. in the Ground, Witness Post South BT 1 3" Spruce N. 55° E., 22.73 ft. BT 2 3" Spruce S. 11° E., 37.39 ft. BT 3 3" Spruce S. 61° W., 32.55 ft.
D	C4 TR A	Tract A, Corner 4 31 ins. in the Ground, Witness Post South BT 1 3" Spruce N. 84° E., 28.08 ft. BT 2 3" Spruce S. 89° W., 13.16 ft. BT 3 3" Spruce N. 2° W., 15.80 ft.
E	TR B C1 C3 TR C	Tract B, Corner 1, Tract C, Corner 3 31 ins. in the Ground, Witness Post West BT 1 15" Spruce N. 26° E., 18.50 ft. BT 2 5" Spruce S. 33° E., 27.93 ft. BT 3 12" Spruce S. 14° W., 46.02 ft.
F	C4 TR B	Tract B, Corner 4 30 ins. in the Ground
G	C5 TR B	Tract B, Corner 5 31 ins. in the Ground
H	TR C C1	Tract C, Corner 1 30 ins. in the Ground, Witness Post North BT 1 8" Spruce S. 75° E., 16.56 ft. BT 2 7" Spruce S. 12° W., 27.35 ft. BT 3 8" Birch N. 15° W., 29.35 ft.
I	TR C C4	Tract C, Corner 4 33 ins. in the Ground

THERE ARE NO LESSEES FOR TRACT A, ADL230447, TRACT B, ADL230448, TRACT C, ADL230449, TRACT D, ADL230450, TRACT E, ADL230451, TRACT F, ADL230452 AND TRACT G, ADL230453.

SCALE



DATE OF SURVEY: Beginning June 24, 2008, Ending July 28, 2008
 Stanley E. Sears, Global Positioning Services, Inc., 2603 Blueberry Rd., Anchorage, Alaska 99503
 STATE OF ALASKA, DEPARTMENT OF NATURAL RESOURCES, DIVISION OF MINING, LAND & WATER, ANCHORAGE, ALASKA
 ALASKA STATE LAND SURVEY NO. 2007-10
 NOWITNA RIVER REMOTE RECREATIONAL CABIN SITES CREATING TRACTS A THROUGH M
 WITHIN PROTRACTED SECTIONS 3, 4, 9 AND 16, T. 19 S., R. 21 E.
 KATEEL RIVER MERIDIAN, ALASKA NULATO RECORDING DISTRICT
 DRAWN BY: LSV, APPROVAL RECOMMENDED: W.P.S. Brown Feb 1-21-09
 DATE: 8/25/08, STATEWIDE PLATTING SUPERVISOR, DATE
 SCALE: 1" = 200', CHECKED: S.E.S., DNR FILE NO.: ASLS 20070010

MONUMENT INFORMATION

DA	TR J C1 MC	Tract J, Witness Corner, Meander Corner 1 32 ins. in the Ground, Witness Post North BT 1 6" Spruce S. 84° E., 14.15 ft. BT 2 13" Spruce S. 13° W., 24.55 ft. BT 3 12" Spruce N. 70° W., 22.58 ft.
EA	TR J C2 TR J	Tract J, Corner 2 32 ins. in the Ground, Witness Post West BT 1 9" Spruce N. 10° E., 44.00 ft. BT 2 10" Spruce S. 60° E., 29.54 ft. BT 3 10" Spruce S. 68° W., 20.52 ft.
FA	TR J C3 TR J	Tract J, Corner 3 30 ins. in the Ground, Witness Post West BT 1 5" Spruce N. 33° E., 13.51 ft. BT 2 5" Spruce S. 54° E., 7.74 ft. BT 3 6" Spruce S. 83° W., 26.70 ft.
GA	TR J C4 TR J	Tract J, Corner 4 32 ins. in the Ground, Witness Post West BT 1 4" Tamarok N. 22° E., 16.51 ft. BT 2 4" Spruce S. 28° E., 30.22 ft. BT 3 3" Spruce S. 77° W., 11.72 ft.
HA	TR J C5 MC	Tract J, Witness Corner, Meander Corner 5 29 ins. in the Ground, Witness Post East BT 1 3" Spruce S. 72° E., 39.03 ft. BT 2 4" Spruce S. 6° W., 34.20 ft. BT 3 3" Spruce N. 2° W., 16.83 ft.
IA	TR K C1 C4 L	Tract K, Witness Corner, Meander Corner 1, Tract L, Witness Corner, Meander Corner 4 30 ins. in the Ground, Witness Post West BT 1 5" Spruce S. 83° E., 17.82 ft. BT 2 8" Birch S. 19° E., 21.98 ft. BT 3 11" Birch N. 83° W., 23.93 ft.
JA	TR K C2 C3 L	Tract K, Witness Corner, Meander Corner 2, Tract L, Witness Corner, Meander Corner 3 31 ins. in the Ground, Witness Post East BT 1 18" Spruce S. 85° E., 40.16 ft. BT 2 11" Birch S. 23° W., 42.00 ft. BT 3 4" Birch N. 67° W., 29.24 ft.
KA	TR L C1 C5 TR M	Tract L, Witness Corner, Meander Corner 1, Tract M, Witness Corner, Meander Corner 5 30 ins. in the Ground, Witness Post West BT 1 9" Spruce N. 9° E., 19.66 ft. BT 2 14" Spruce S. 74° E., 7.49 ft. BT 3 12" Spruce S. 57° W., 28.97 ft.
LA	TR L C2 C4 TR M	Tract L, Witness Corner, Meander Corner 2, Tract M, Witness Corner, Meander Corner 4 30 ins. in the Ground, Witness Post East BT 1 14" Spruce N. 11° E., 35.14 ft. BT 2 7" Spruce S. 87° E., 26.41 ft. BT 3 6" Spruce S. 40° W., 36.24 ft.
MA	TR M C1 TR M	Tract M, Witness Corner, Meander Corner 1 32 ins. in the Ground, Witness Post South BT 1 11" Spruce N. 20° E., 16.65 ft. BT 2 5" Spruce S. 3° W., 31.76 ft. BT 3 4" Spruce S. 73° W., 40.65 ft.
NA	TR M C2 TR M	Tract M, Corner 2 31 ins. in the Ground, Witness Post East BT 1 4" Birch N. 48° E., 16.55 ft. BT 2 10" Spruce S. 15° W., 20.62 ft. BT 3 11" Spruce S. 89° W., 18.18 ft.
OA	TR M C3 MC	Tract M, Witness Corner, Meander Corner 3 31 ins. in the Ground, Witness Post East BT 1 16" Spruce N. 37° E., 28.23 ft. BT 2 8" Spruce S. 53° W., 24.58 ft. BT 3 11" Spruce N. 12° W., 24.92 ft.

TRACT L MEANDER COURSES

1	N. 8°57'00" W. 214.70'
2	N. 8°03'00" W. 353.50'
3	N. 3°54'00" E. 44.80'
4	S. 4°40'15" E. 133.80'
5	S. 7°47'00" E. 216.00'
6	S. 25°21'00" E. 208.50'
7	S. 39°22'00" E. 92.00'

TRACT K MEANDER COURSES

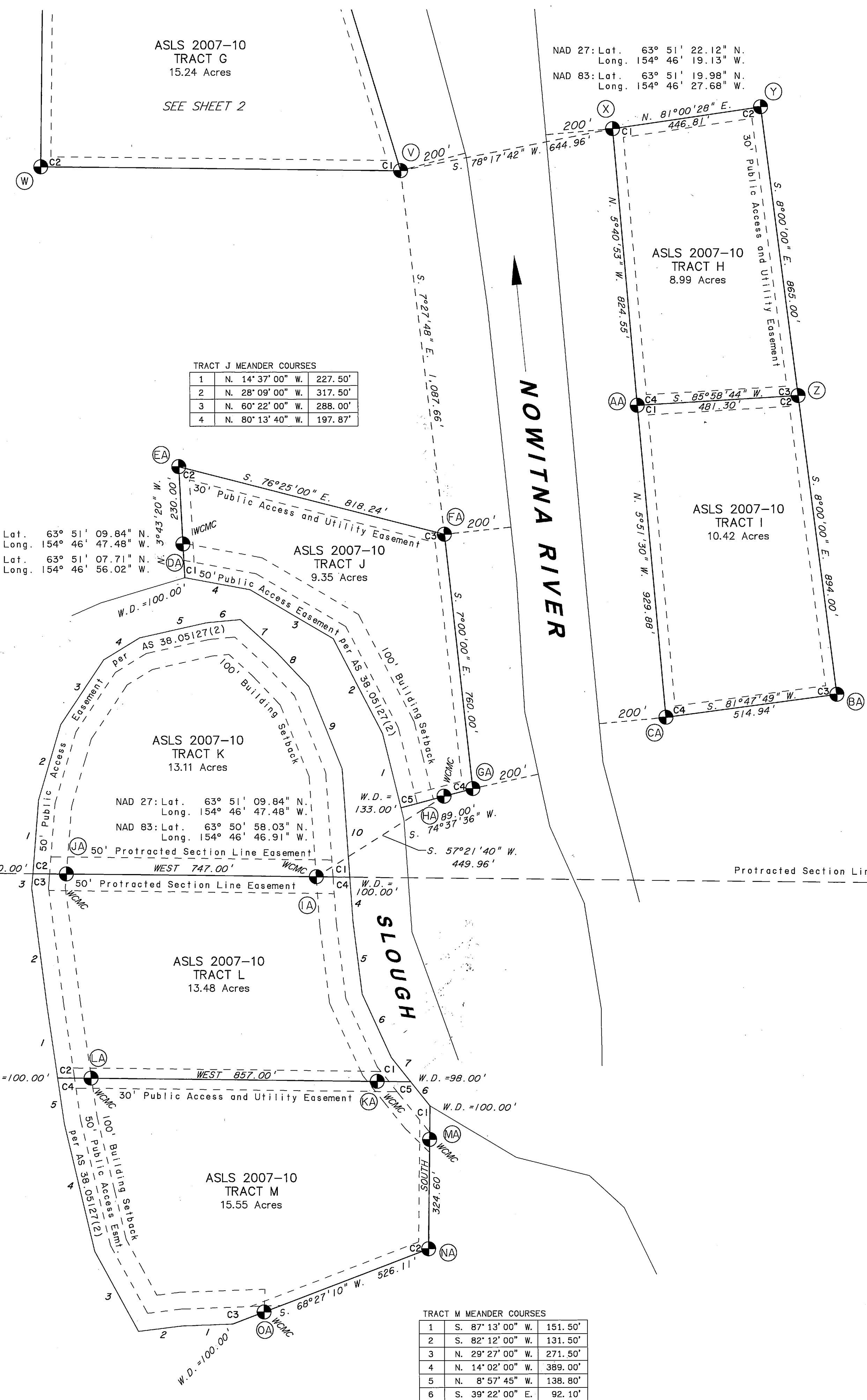
1	N. 3°54'00" E. 218.70'
2	N. 15°48'00" E. 233.00'
3	N. 33°06'00" E. 232.00'
4	N. 58°06'00" E. 126.50'
5	N. 76°44'00" E. 204.50'
6	N. 84°02'00" E. 101.50'
7	S. 48°35'00" E. 144.00'
8	S. 44°16'00" E. 141.00'
9	S. 22°42'00" E. 264.50'
10	S. 4°39'00" E. 321.90'

TRACT J MEANDER COURSES

1	N. 14°37'00" W. 227.50'
2	N. 28°09'00" W. 317.50'
3	N. 60°22'00" W. 288.00'
4	N. 80°13'40" W. 197.87'

TRACT M MEANDER COURSES

1	S. 87°13'00" W. 151.50'
2	S. 82°12'00" W. 131.50'
3	N. 29°27'00" W. 271.50'
4	N. 14°02'00" W. 389.00'
5	N. 8°57'45" W. 138.80'
6	S. 39°22'00" E. 92.10'



- LEGEND:**
- PRIMARY MONUMENT RECOVERED
 - PRIMARY MONUMENT SET THIS SURVEY
 - SECONDARY MONUMENT SET
 - PROTRACTED SECTION LINES
 - SURVEYED LINES
 - TIE
 - MONUMENT IDENTIFIER

2009-1

Nulato REC DIST
DATE Feb 12 2009
TIME 12:50 P M
Requested by DNR
Address _____

DATE OF SURVEY: Beginning June 24, 2008, Ending July 28, 2008
Stanley E. Sears
Global Positioning Services, Inc.
2603 Blueberry Rd.
Anchorage, Alaska 99503

STATE OF ALASKA
DEPARTMENT OF NATURAL RESOURCES
DIVISION OF MINING, LAND & WATER
ANCHORAGE, ALASKA

ALASKA STATE LAND SURVEY NO. 2007-10

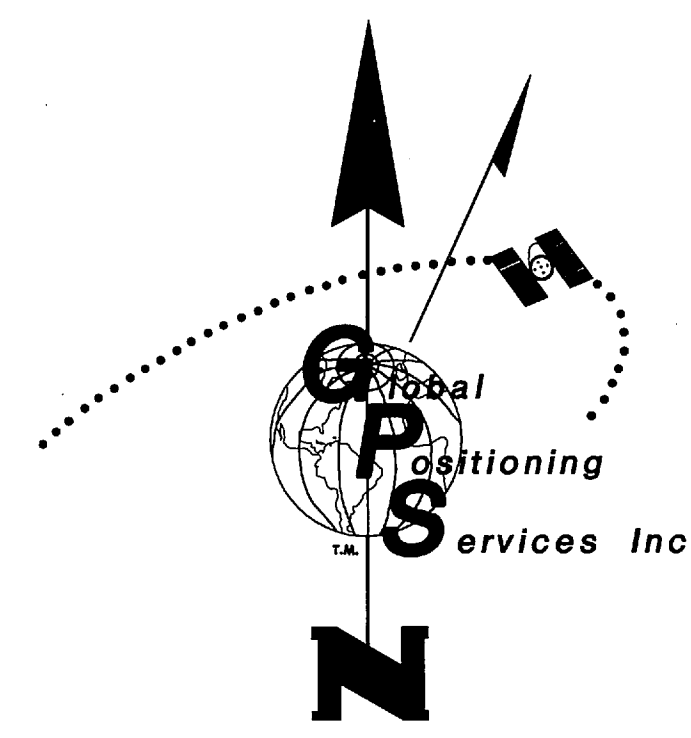
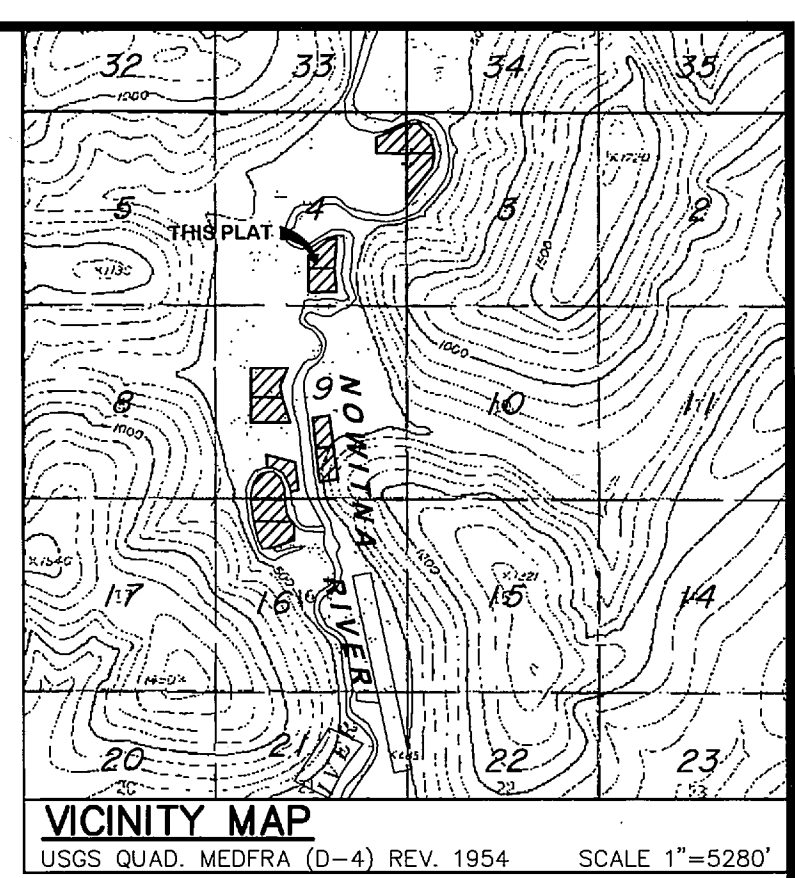
NOWITNA RIVER REMOTE RECREATIONAL CABIN SITES
CREATING TRACTS A THROUGH M

WITHIN PROTRACTED SECTIONS 3, 4, 9 AND 16,
T. 19 S., R. 21 E.
KATELE RIVER MERIDIAN, ALASKA
NULATO RECORDING DISTRICT

DRAWN BY: LSV
DATE: 8/25/08
SCALE: 1" = 200'

APPROVAL RECOMMENDED
W.S. Gunn FOR 1-21-09
STATEWIDE PLATTING SUPERVISOR DATE

CHECKED: DNR FILE NO.
S.E.S. ASLS 20070010



MONUMENT INFORMATION

X	TR H C1 TR H	Tract H, Corner 1 29 ins. in the Ground, Witness Post East BT 1 5" Spruce N. 74° E., 16.14 ft. BT 2 5" Spruce S. 63° E., 12.13 ft. BT 3 8" Spruce N. 78° W., 16.68 ft.
Y	TR H C2 TR H	Tract H, Corner 2 30 ins. in the Ground, Witness Post East BT 1 5" Spruce N. 44° E., 20.21 ft. BT 2 6" Spruce South, 22.81 ft. BT 3 3" Spruce N. 69° W., 11.70 ft.
Z	TR H C3 C2 TR I	Tract H, Corner 3, Tract I, Corner 2 29 ins. in the Ground, Witness Post East BT 1 3" Spruce N. 56° E., 12.29 ft. BT 2 3" Spruce S. 36° E., 8.56 ft. BT 3 3" Spruce N. 84° W., 23.77 ft.
AA	TR H C4 C1 TR I	Tract H, Corner 4, Tract I, Corner 1 29 ins. in the Ground, Witness Post East BT 1 4" Spruce N. 47° E., 7.75 ft. BT 2 4" Spruce S. 36° E., 23.81 ft. BT 3 4" Spruce S. 70° W., 16.02 ft.
BA	TR I C3 TR I	Tract I, Corner 3 28 ins. in the Ground, Witness Post North BT 1 4" Spruce N. 78° E., 5.01 ft. BT 2 5" Spruce S. 27° E., 26.00 ft. BT 3 3" Spruce S. 35° W., 21.91 ft.
CA	TR I C4 TR I	Tract I, Corner 4 31 ins. in the Ground, Witness Post North BT 1 3" Spruce N. 5° E., 13.05 ft. BT 2 3" Spruce S. 76° E., 14.71 ft. BT 3 3" Spruce S. 72° W., 28.89 ft.

LESSEE CERTIFICATE
I, THE UNDERSIGNED, HEREBY CERTIFY THAT I AM THE LESSEE AS SHOWN HEREON. I HEREBY APPROVE THIS SURVEY AND PLAT.
TRACT H, AND ADL No. 229927
Julie Norton 1/8/2009
LESLIE NORTON
5061 BUCKINGHAM WAY
ANCHORAGE, AK 99503

NOTARY'S ACKNOWLEDGEMENT
SUBSCRIBED AND SWORN TO BEFORE ME THIS 8 DAY OF January, 2009.
FOR: *Julie Norton*
APPLICANT
Don P. K...
NOTARY PUBLIC FOR ALASKA
MY COMMISSION EXPIRES 12/31/12

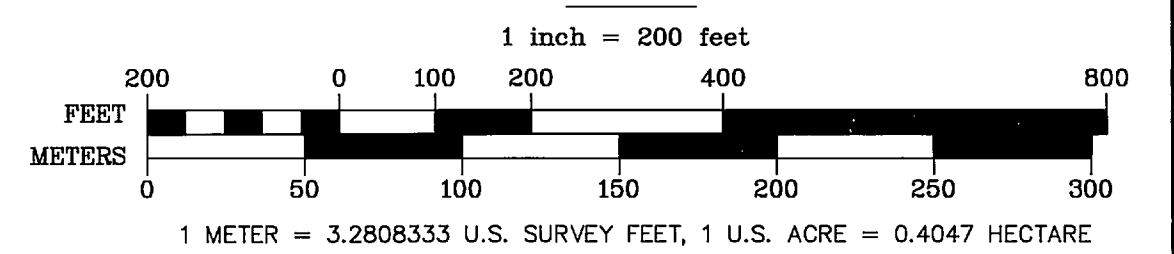
LESSEE CERTIFICATE
I, THE UNDERSIGNED, HEREBY CERTIFY THAT I AM THE LESSEE AS SHOWN HEREON. I HEREBY APPROVE THIS SURVEY AND PLAT.
TRACT I, AND ADL No. 228350
Andrew J. Niemiec 1-9-09
ANDREW J. NIEMIEC
1437 ITHACA ROAD
FAIRBANKS, AK 99709

NOTARY'S ACKNOWLEDGEMENT
SUBSCRIBED AND SWORN TO BEFORE ME THIS 9TH DAY OF January, 2009.
FOR: *Andrew Niemiec*
APPLICANT
Don P. K...
NOTARY PUBLIC FOR ALASKA
MY COMMISSION EXPIRES 4/1/2012

LESSEE CERTIFICATE
I, THE UNDERSIGNED, HEREBY CERTIFY THAT I AM THE LESSEE AS SHOWN HEREON. I HEREBY APPROVE THIS SURVEY AND PLAT.
TRACT J, AND ADL No. 229936
James E. Weymiller 12-15-08
JAMES E. WEYMILLER
666 11th AVE, #302
FAIRBANKS, AK 99701

NOTARY'S ACKNOWLEDGEMENT
SUBSCRIBED AND SWORN TO BEFORE ME THIS 15 DAY OF December, 2008.
FOR: *James E. Weymiller*
APPLICANT
Don P. K...
NOTARY PUBLIC FOR ALASKA
MY COMMISSION EXPIRES with office

THERE ARE NO LESSEES FOR TRACT K, ADL230454,
TRACT L, ADL230455 AND TRACT M, ADL230456.



From: opus [opus@ngs.noaa.gov]
Sent: Friday, June 27, 2008 10:10 AM
To:
Subject: OPUS solution : ASE11770.DAT 000385306

FILE: ASE11770.DAT 000385306

NGS OPUS SOLUTION REPORT

All computed coordinate accuracies are listed as peak-to-peak values.
For additional information: www.ngs.noaa.gov/OPUS/Using_OPUS.html#accuracy

USER: lvaughan@alaska.com DATE: June 27, 2008
RINEX FILE: ase1177s.08o TIME: 18:09:49 UTC

SOFTWARE: page5 0612.06 master2.pl START: 2008/06/25 18:23:00
EPHEMERIS: igr14853.eph [rapid] STOP: 2008/06/25 21:20:00
NAV FILE: brdc1770.08n OBS USED: 6244 / 6575 : 95%
ANT NAME: TRM22020.00-GP NONE # FIXED AMB: 40 / 41 : 98%
ARP HEIGHT: 1.676 OVERALL RMS: 0.015(m)

REF FRAME: NAD_83 (CORS96) (EPOCH:2003.0000) ITRF00 (EPOCH:2008.4831)

X: -2549769.087 (m) 0.020 (m) -2549769.996 (m) 0.020 (m)
Y: -1200682.185 (m) 0.022 (m) -1200681.148 (m) 0.022 (m)
Z: 5702680.087 (m) 0.032 (m) 5702680.461 (m) 0.032 (m)

LAT: 63 51 12.48500 0.029 (m) 63 51 12.47929 0.029 (m)
E LON: 205 12 56.41597 0.022 (m) 205 12 56.31897 0.022 (m)
W LON: 154 47 3.58403 0.022 (m) 154 47 3.68103 0.022 (m)
EL HGT: 161.121 (m) 0.023 (m) 161.625 (m) 0.023 (m)
ORTHO HGT: 151.499 (m) 0.122 (m) [NAVD88 (Computed using GEOID06)]

UTM COORDINATES STATE PLANE COORDINATES
UTM (Zone 05) SPC (5005 AK 5)
Northing (Y) [meters] 7081912.190 1097730.505
Easting (X) [meters] 412276.521 461425.162
Convergence [degrees] -1.60183944 -0.70407709
Point Scale 0.99969424 0.99991822
Combined Factor 0.99966903 0.99989301

US NATIONAL GRID DESIGNATOR: 5VML1227781912(NAD 83)

BASE STATIONS USED

PID DESIGNATION LATITUDE LONGITUDE DISTANCE (m)
AH2494 TLKA TALKEETNA CORS ARP N621827.556 W1502512.979 279743.4
AI0952 TSEA ANCHORAGE CORS ARP N611114.374 W1495341.819 389228.6
DK4095 FAI1 FAIRBANKS WAAS CORS ARP N644834.672 W1475050.319 351697.1

NEAREST NGS PUBLISHED CONTROL POINT

UW3179 SUSU 1952 N635156.770 W1543706.095 8254.2

This position and the above vector components were computed without any knowledge by the National Geodetic Survey regarding the equipment or field operating procedures used.