



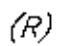
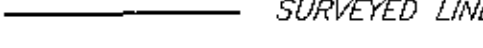
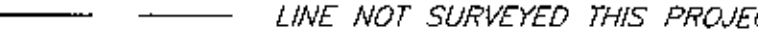

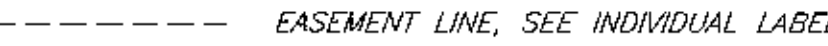
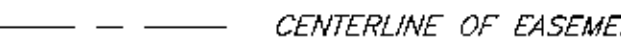


RIDGE ROCK REMOTE RECREATIONAL CABIN SITES

INDEX SHEET

LEGEND:

-  GLO-BLM MONUMENT RECOVERED
-  GLO-BLM MONUMENT OF RECORD
-  PRIMARY MONUMENT SET THIS SURVEY
-  PRIMARY MONUMENT RECOVERED
-  RECORD BEARINGS & DISTANCES, SEE INDIVIDUAL SHEETS FOR SOURCE
-  SURVEYED LINE
-  LINE NOT SURVEYED THIS PROJECT
-  BUILDING SETBACK LINE
-  EASEMENT LINE, SEE INDIVIDUAL LABELS
-  CENTERLINE OF EASEMENT

AKDOT&PF Monument
"JACKSON"
(Likely Disturbed After This Survey)
(See Note 7)

TAX STATEMENT

This subdivision lies within the Denali Borough and is not subject to taxation at this time.

CERTIFICATE OF SUBDIVISION APPROVAL

This subdivision has been reviewed and found to be in compliance with the Denali Borough Platting Ordinance No. 96-22 and the applicable provisions of the law and is hereby approved.

David Hagan 1-4-05
Denali Borough
Approving Official

SURVEYOR'S CERTIFICATE

I hereby certify that I am properly registered and licensed to practice land surveying in the State of Alaska, that this plat represents a survey made by me or under my direct supervision, that the monuments shown hereon actually exist as described, and that all dimensions and other details are correct.

Date: 8/26/04
Registration No.: 4489-S
Donald E. Mullikin,
Professional Land Surveyor

CERTIFICATE OF OWNERSHIP AND DEDICATION

I, the undersigned, hereby certify that I am the Director, Division of Mining, Land and Water, and that the State of Alaska is the owner of ASLS 2003-16 as shown hereon. I hereby approve this survey and plat for the State of Alaska, and dedicate for public or private use as noted, all easements, public utility areas, and rights-of-way as shown and described hereon.

Dated Dec 28, 2004.

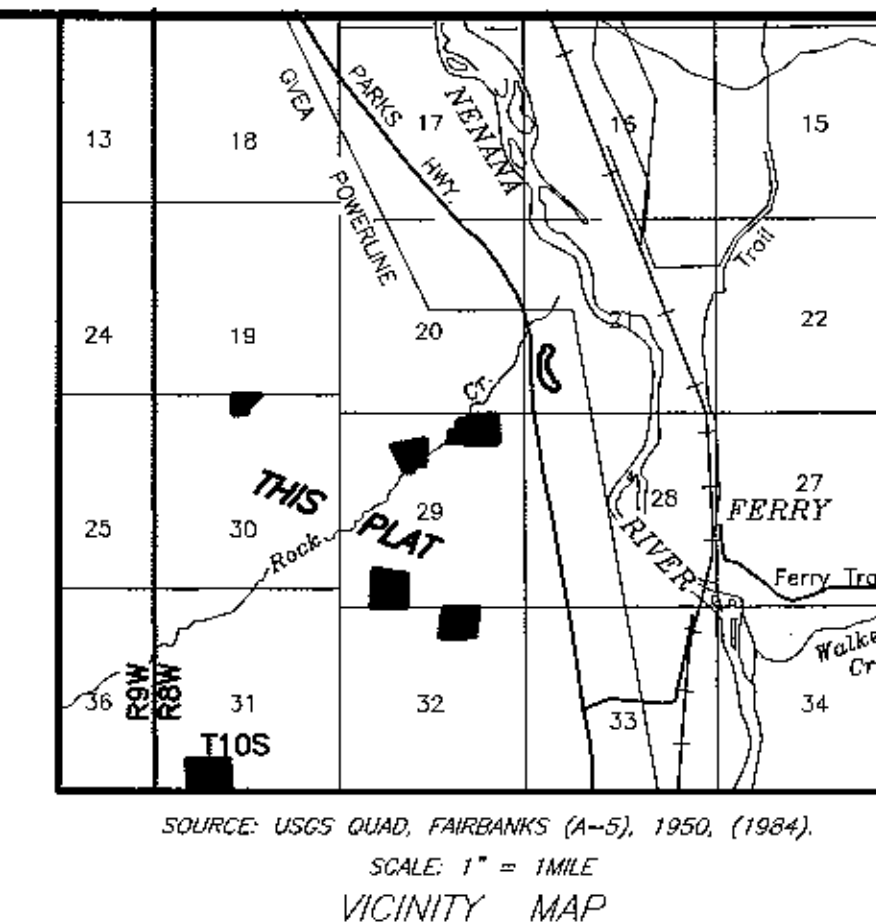
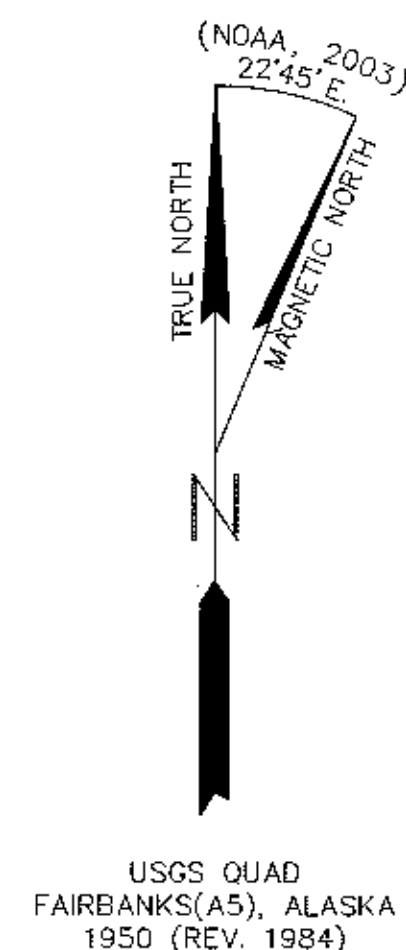
Donald E. Mullikin
Director, Division of Mining, Land and Water

NOTARY'S ACKNOWLEDGEMENT

Subscribed and sworn before me this 28 day of DEC., 2004 for

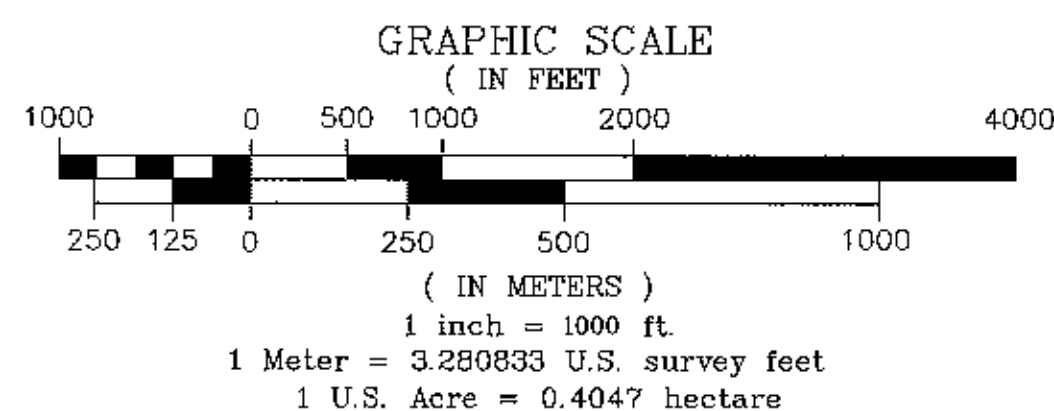
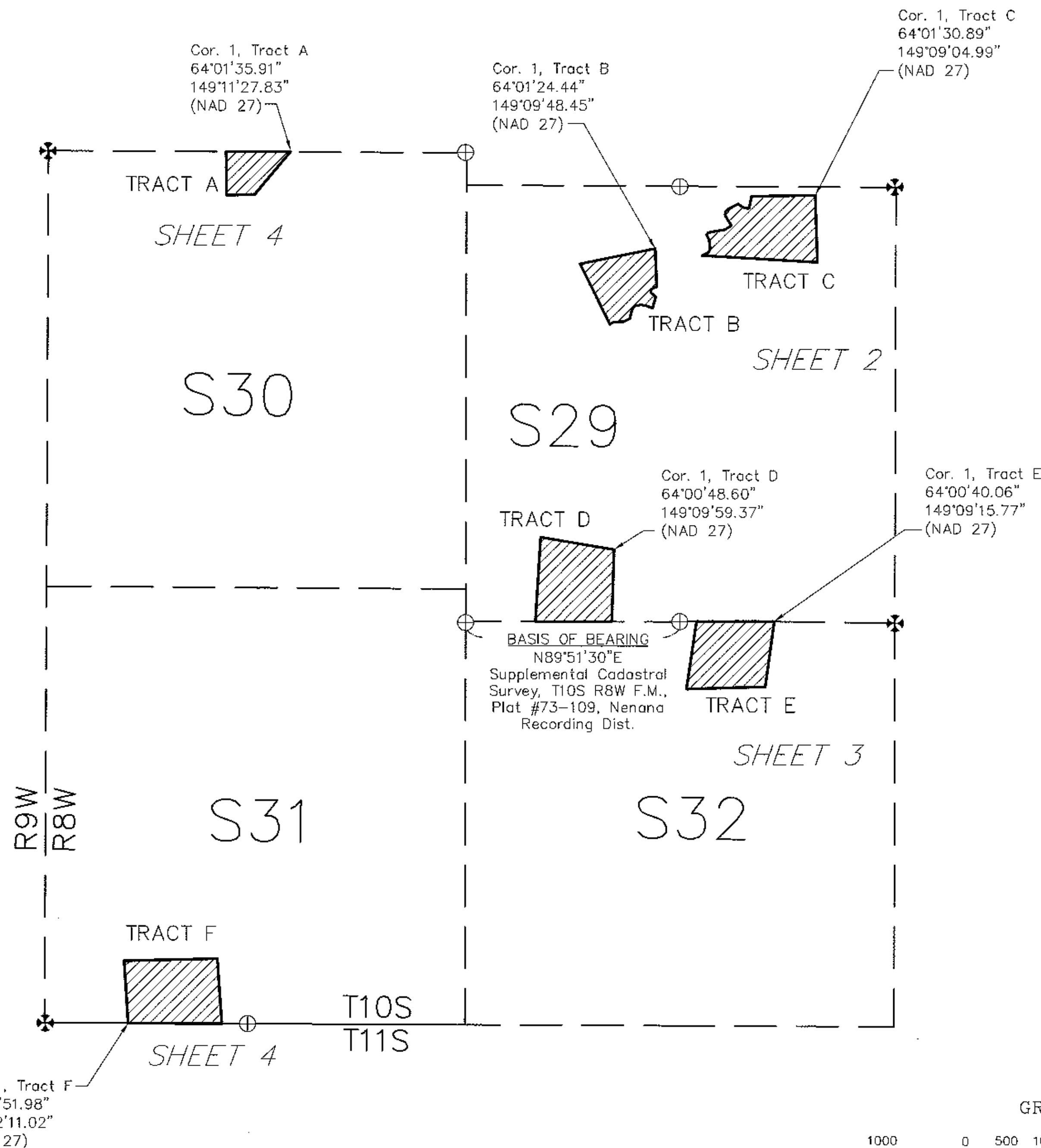
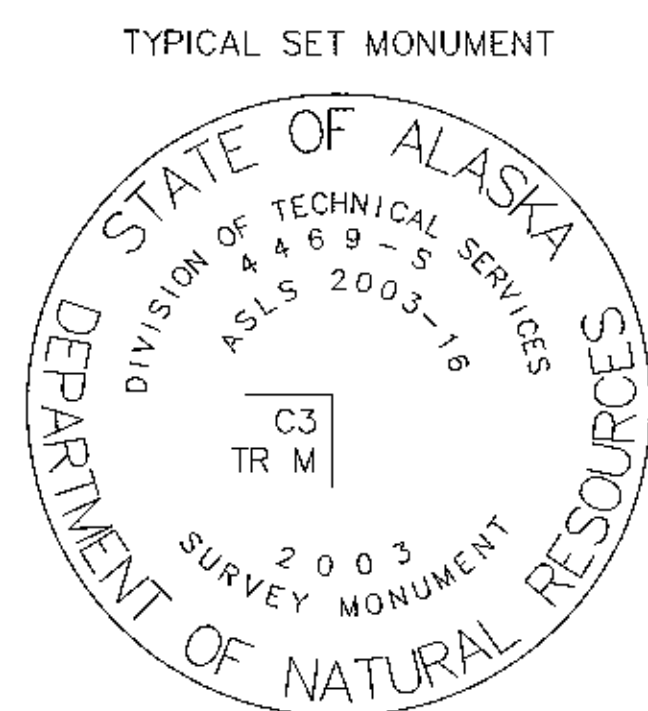
Gerald D. Jennings

Gerald D. Jennings
Notary Public for Alaska
My Commission Expires: 1-9-05



NOTES:

- This survey was accomplished in accordance with AS 38.05.600, GSC 671 and GSI 2003-16.
- All bearings are true bearings as oriented to the Basis of Bearing and distances shown are reduced to horizontal field distances. Monuments were set with high precision differentially corrected Real Time Kinematic GPS methods using Tripod Data Systems GPS Survey Pro version 3.2 and confirmed with high precision differentially corrected static observations using Javad Legacy and Legacy-E receivers, with data processed by GeoGenius 2000 software.
- The accuracy of this survey is greater than 1:5000.
- All parcels of land owned by the State of Alaska, located within 50.00 feet of, or bisected by a surveyed or protracted section line, are subject to a 50 foot (50') easement, each side of the section line, which is reserved to the State of Alaska for public highways under AS 19.10.010.
- The existing lessees' claim corners were recovered and used to control the location of tract boundaries.
- The natural meanders of the line of ordinary high water form the true bounds of Tracts B and C. The approximate line of OHW, as shown, is for area computations only, with the true corners being on the extension of the sidelines and their intersection with the natural meanders.
- The basis for Geographic Position is the Alaska DOT&PF monument "Jackson", with Lat. 64°02'19.88206", Long. 149°09'13.58186" NAD 27, (Lat. 64°02'18.21131", Long. 149°09'21.98550", NAD 83, 1992 adjustment), and carried to this survey by unconstrained static GPS measurements.
- A local coordinate system was adopted by taking State Plane Zone 4, NAD 83 (feet) coordinates, rotating and scaling points around the southwest corner of Section 29. That point is the only point where the local coordinate equals the state plane coordinate. The rotation was clockwise 0°47'49" from the state plane bearing to the record bearing of N. 89°51'30" E. as shown on the State Supplemental Cadastral Survey plot of Township 10 South, Range 8 West, as recorded on Plat 73-109, Nenana Recording District. A combined scale factor from grid to ground 1.0001523 was used. These coordinates were not constrained to the National Spatial Reference System (NSRS) by using a CORS station.



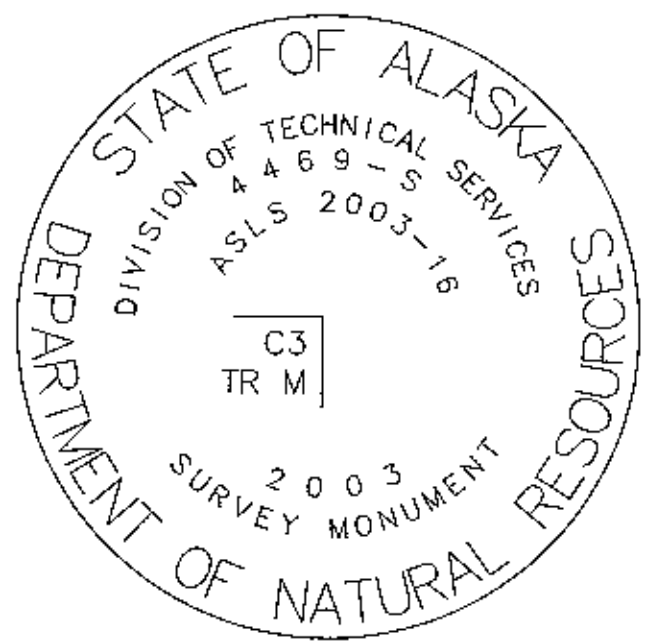
NENANA 2005-1	
DATE OF SURVEY: BEGINNING Aug. 31, 2003 ENDING Sept. 9, 2003	NAME OF SURVEYOR: Mullikin Surveys P.O. Box 790 Homer, AK 99603-0790
STATE OF ALASKA DEPARTMENT OF NATURAL RESOURCES, DIVISION OF MINING, LAND, AND WATER ANCHORAGE, ALASKA	
ALASKA STATE LAND SURVEY 2003-16	
WITHIN SURVEYED SECTIONS 29, 30, 31, 32 T.10S., R.8W., F.M., ALASKA Nenana Recording District	
DRAWN BY: TLM, GDS DATE: 3-11-04	APPROVAL RECOMMENDED: <i>Donald E. Mullikin</i> 28 Dec 2004 STATE PLANNING SUPERVISOR, DATE
SCALE: 1" = 1000'	CHECKED FILE NO: DEM, JVM/ASLS 20030016

TRACT B MONUMENTATION

Corner Marking	Description	Bearing Trees
C1 TR A C2 TR B LS 4840 1985	Found alum. drive rod, 3/4 in. diam., 0.7 ft. above ground, leaning E. 0.2 ft., with alum. cap, 3 1/4 ins. diam., marked as shown.	Fiberglass post, bears N., 1 ft. dist. Spruce, 6 ins. diam., bears N. 55°15' E., 29.7 ft. dist., with open blaze, no scribing; add blaze, mark "X". (R = N. 59°45' E., 29.9 ft.) Spruce, 6 ins. diam., bears S. 56°45' E., 4.1 ft. dist., with nearly healed blaze; add blaze, mark "X". (R = S. 59° W.) Spruce, 6 ins. diam., bears N. 53°15' W., 12.4 ft. dist., with healing blaze; add blaze, mark "X". (R = N. 47°45' W., 12.3 ft.)
C2 ASLS 85-229 WC TR B C2 MC LS 4840 1985	Found alum. drive rod, 3/4 in. diam., 0.3 ft. above ground, in good condition, with alum. cap, 3 1/4 ins. diam., marked as shown.	Spruce, 9 ins. diam., bears N. 6°30' E., 13.5 ft. dist., with healed blaze; add blaze, mark "X". (R = N. 9°45' E., 13.8 ft.) Spruce, 9 ins. diam., bears E., 14.6 ft. dist., with nearly healed blaze; add blaze, mark "X". (R = S. 86°30' E., 14.1 ft.) Red post, 3 ins. x 3 ins., bears S. 22°45' W., 197.0 ft. dist. Spruce, 8 ins. diam., bears N. 55°45' W., 13.2 ft. dist., with nearly healed blaze; add blaze, mark "X". (R = N. 50° W., 13.6 ft.) And a new bearing object, Post, 3 ins. diam., bears N., 1 ft. dist.
C3 WC TR B C3 MC 2003	Set alum. post, 2 1/2 ins. diam., 30 ins. long, 15 ins. in the ground, in a collar of stone, 3 ft. diam., with alum. cap, 3 1/4 ins. diam., marked as shown.	Found post, 4 ins. x 4 ins., bears SE, 12 ft. dist. And new bearing trees and bearing object, Spruce, 4 ins. diam., bears N. 35° E., 2.9 ft. dist., mkd. "X". Spruce, 5 ins. diam., bears N. 63° W., 8.5 ft. dist., mkd. "X". Spruce post, 2 ins. x 4 ins., bears NW, 1 ft. dist. Spruce, 4 ins. diam., bears N. 5° W., 9.0 ft. dist., mkd. "X".
C4 ASLS 85-229 TR A C3 LS 4840 1985	Found alum. drive rod, 3/4 in. diam., 0.7 ft. above ground, leaning SSE 0.3 ft., with alum. cap, 3 1/4 ins. diam., marked as shown.	Spruce, 6 ins. diam., bears N. 52° E., 15 ft. dist., with healed blaze; rebrazed and mkd. "X". Fiberglass post, bears NE, 1.4 ft. dist. Pink post, 3 ins. x 3 ins., bears SSW, 1 ft. dist. Spruce, 5 ins. diam., bears S. 11°45' E., 27.0 ft. dist. with partly healed blaze; rebrazed and mkd. "X". (R = S. 6°45' E., 27.2) Dead Spruce, 6 ins. diam., bears N. 81°30' W., 32.8 ft. dist., scribed "C3TABT3". And a new bearing tree and bearing object, Post, 3 ins. diam., bears N., 1 ft. dist. Spruce, 4 ins. diam., bears S. 68°45' E., 14.6 ft. dist., mkd. "X".
C4 AK DIV. OF LANDS T10S R8W 1/4 S20 S29 1972	Found galvanized post, 2 ins. diam., 1.1 ft. above ground, in standing water, with brass cap, 3 1/4 ins. diam., marked as shown.	Spruce, 4 ins. diam., bears N. 50°30' E., 53.5 ft. dist., with open blaze. Spruce, 2 ins. diam., standing dead, bears S. 41°45' E., 41.7 ft. dist., mkd. with a blaze. Spruce, 4 ins. diam., bears S. 57°45' W., 39.9 ft. dist., with healed blaze. And a new bearing tree and object, Spruce post, 4 ins. diam., bears N., 1 ft. dist. Birch, 5 ins. diam., bears N. 43°15' E., 57.7 ft. dist., mkd. "X" and a blaze.

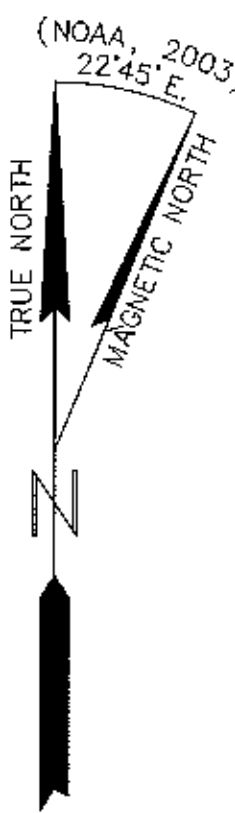
RIDGE ROCK REMOTE RECREATIONAL CABIN SITES

TYPICAL SET MONUMENT



LEGEND:

- ⊗ GLO-BLM MONUMENT RECOVERED
- ⊗ GLO-BLM MONUMENT OF RECORD
- ⊕ PRIMARY MONUMENT SET THIS SURVEY
- ⊕ PRIMARY MONUMENT RECOVERED
- (R) RECORD BEARINGS & DISTANCES, SEE INDIVIDUAL SHEETS FOR SOURCE
- SURVEYED LINE
- LINE NOT SURVEYED THIS PROJECT
- - - BUILDING SETBACK LINE
- - - EASEMENT LINE, SEE INDIVIDUAL LABELS
- - - CENTERLINE OF EASEMENT

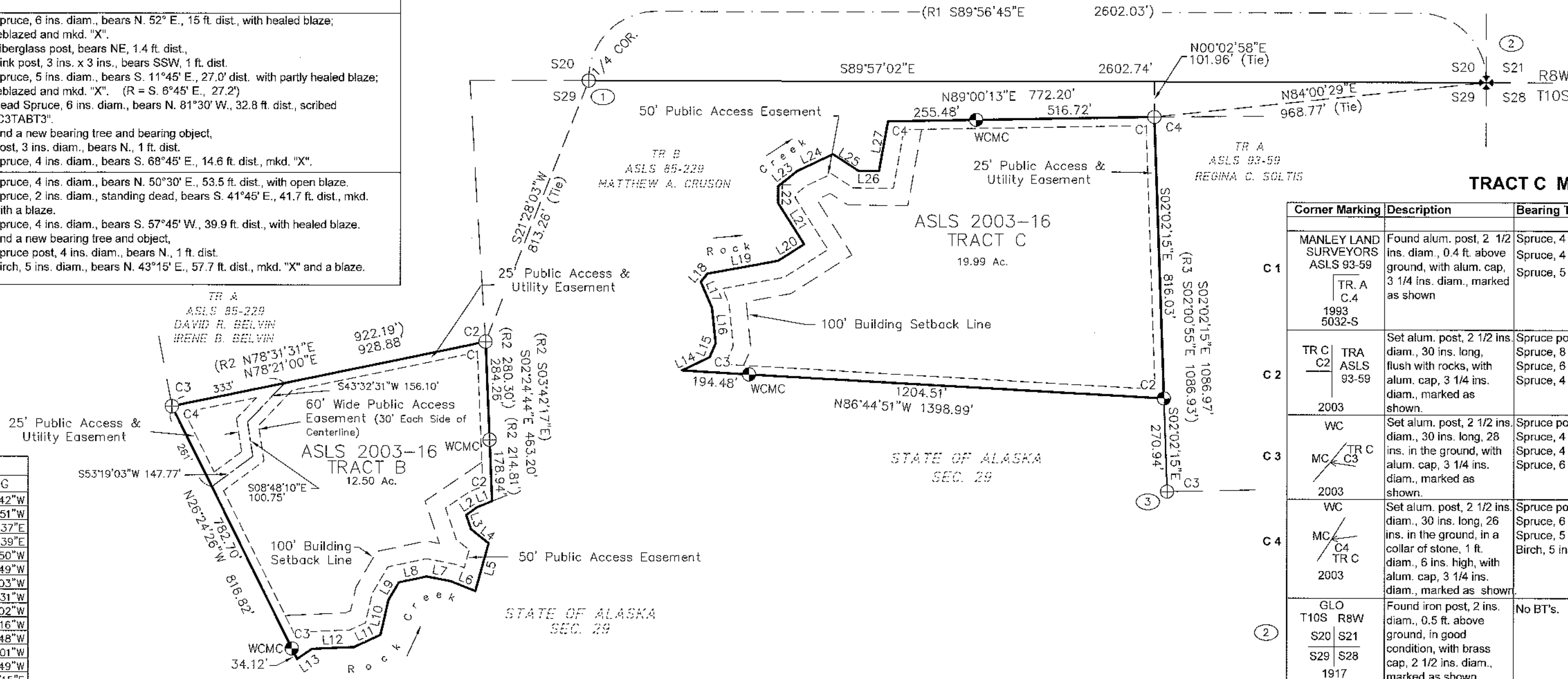


USGS QUAD FAIRBANKS(A5), ALASKA 1950 (REV. 1984)

RECORD PLATS REFERENCED THIS SHEET

- R1 Supplemental Cadastral Survey, 73-109, Nenana R. D.
- R2 ASLS 85-229
- R3 ASLS 93-59

LINE	LENGTH	BEARING
L1	47.59'	S68°03'42"W
L2	38.60'	S55°48'51"W
L3	43.74'	S18°53'37"E
L4	65.62'	S52°03'39"E
L5	143.62'	S15°27'50"W
L6	79.01'	N68°03'49"W
L7	70.63'	N79°20'03"W
L8	81.82'	S78°06'31"W
L9	59.58'	S30°27'02"W
L10	103.34'	S12°50'16"W
L11	84.60'	S65°02'48"W
L12	121.54'	S87°34'01"W
L13	52.43'	S55°47'49"W
L14	88.67'	N64°08'15"E
L15	43.60'	N23°29'54"E
L16	103.20'	N05°51'10"W
L17	81.90'	N23°32'00"W
L18	30.28'	N39°41'40"E
L19	208.08'	N79°29'30"E
L20	89.30'	N57°35'35"E
L21	140.77'	N32°27'52"W
L22	49.33'	N00°02'19"W
L23	70.20'	N51°16'09"E
L24	115.23'	N64°32'12"E
L25	87.71'	S56°42'05"E
L26	60.01'	S89°12'11"E
L27	146.90'	N10°08'17"E



TRACT C MONUMENTATION

Corner Marking	Description	Bearing Trees
C1 MANLEY LAND SURVEYORS ASLS 93-59 TR A C4 1993 5032-S	Found alum. post, 2 1/2 ins. diam., 0.4 ft. above ground, with alum. cap, 3 1/4 ins. diam., marked as shown.	Spruce, 4 ins. diam., bears N. 71° E., 12.1 ft. dist. (R = N. 78° E., 12.4 ft.) Spruce, 4 ins. diam., bears S. 46° E., 22.8 ft. dist. (R = S. 40° E., 22.7 ft.) Spruce, 5 ins. diam., bears S. 58° W., 14.4 ft. dist. (R = S. 58° W., 14.0 ft.)
C2 TR C ASLS 93-59 2003	Set alum. post, 2 1/2 ins. diam., 30 ins. long, flush with rocks, with alum. cap, 3 1/4 ins. diam., marked as shown.	Spruce post, 4 ins. diam., bears N., 1 ft. dist. Spruce, 8 ins. diam., bears N. 0°30' E., 21.3 ft. dist., mkd. "X". Spruce, 8 ins. diam., bears S. 28°15' E., 12.1 ft. dist., mkd. "X". Spruce, 4 ins. diam., bears S. 76°15' W., 20.4 ft. dist., mkd. "X".
C3 WC MC C3 2003	Set alum. post, 2 1/2 ins. diam., 30 ins. long, 28 ins. in the ground, with alum. cap, 3 1/4 ins. diam., marked as shown.	Spruce post, 3 ins. diam., bears N., 1 ft. dist. Spruce, 4 ins. diam., bears N. 64° E., 28.5 ft. dist., mkd. "X". Spruce, 4 ins. diam., bears S. 6°15' W., 65.7 ft. dist., mkd. "X". Spruce, 6 ins. diam., bears N. 55°30' W., 37.2 ft. dist., mkd. "X".
C4 WC MC C4 TR C 2003	Set alum. post, 2 1/2 ins. diam., 30 ins. long, 26 ins. in the ground, in a collar of stone, 1 ft. diam., 6 ins. high, with alum. cap, 3 1/4 ins. diam., marked as shown.	Spruce post, 4 ins. diam., bears N., 1 ft. dist. Spruce, 6 ins. diam., bears N. 75°15' E., 12.2 ft. dist., mkd. "X". Spruce, 5 ins. diam., bears S. 10°45' E., 17.7 ft. dist., mkd. "X". Birch, 5 ins. diam., bears N. 47°45' W., 16.8 ft. dist., mkd. "X".
C4 GLO T10S R8W S20 S21 S29 S28 1917	Found iron post, 2 ins. diam., 0.5 ft. above ground, in good condition, with brass cap, 2 1/2 ins. diam., marked as shown.	No BT's.
C4 MANLEY LAND SURVEYORS ASLS 93-59 TR A C3 TR B C4 1993 5032-S	Found alum. post, 2 1/2 ins. diam., 0.2 ft. above ground, with alum. cap, 3 1/4 ins. diam., marked as shown.	Spruce, 6 ins. diam., bears N. 44°30' E., 12.7 ft. dist., with open blaze. Spruce, 6 ins. diam., bears S. 36° E., 12.1 ft. dist., with open healing blaze. Spruce, 5 ins. diam., bears S. 54° W., 12.2 ft. dist., with open healing blaze. And a new bearing object, Spruce post, 3 ins. diam., bears S., 1.0 ft. dist.

APPLICANT'S CERTIFICATE

I, the undersigned, hereby certify that I am the applicant as shown hereon. I hereby approve this survey and plat.

TRACT No. "B", ADL No. 416841.

Matthew Hall, Date: 9-24-04
P.O. Box 2368, Seward, AK 99664

NOTARY'S ACKNOWLEDGEMENT

Subscribed and sworn before me this 24 day of SEPT., 2004 for

FOR: MATTHEW HALL

Notary Public for Alaska
My Commission Expires: 1-9-05



APPLICANT'S CERTIFICATE

I, the undersigned, hereby certify that I am the applicant as shown hereon. I hereby approve this survey and plat.

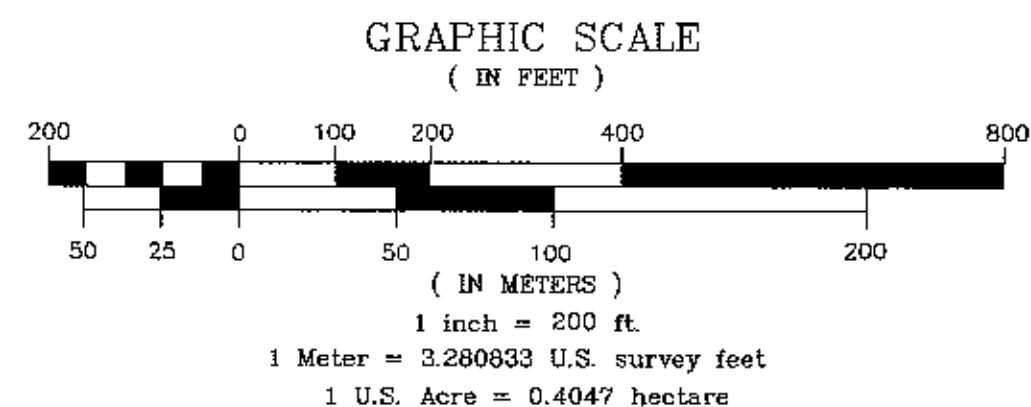
TRACT No. "C", ADL No. 416864.

Raymond Gary, Date: _____
P.O. Box 255, Healy, AK 99743

NOTARY'S ACKNOWLEDGEMENT

Subscribed and sworn before me this ___ day of _____, 2004 for

Notary Public for Alaska
My Commission Expires: _____



NENANA 2005-1

DATE OF SURVEY: BEGINNING Aug. 31, 2003
ENDING Sept. 9, 2003
NAME OF SURVEYOR: Mullikin Surveys
P.O. Box 790
Homer, AK 99603-0790

STATE OF ALASKA
DEPARTMENT OF NATURAL RESOURCES,
DIVISION OF MINING, LAND, AND WATER
ANCHORAGE, ALASKA

ALASKA STATE LAND SURVEY 2003-16
WITHIN SURVEYED SECTIONS
29, 30, 31, 32
T.10S., R.8W., F.M., ALASKA
Nenana Recording District

DRAWN BY: ILM, GDS
DATE: 3-11-04
APPROVAL RECOMMENDED:
STATEWIDE PLATTING SUPERVISOR, DATE

SCALE: 1" = 200'
CHECKED FILE NO:
DEM, JVM ASLS 20030016

RIDGE ROCK REMOTE RECREATIONAL CABIN SITES

LEGEND:

- GLO-BLM MONUMENT RECOVERED
- GLO-BLM MONUMENT OF RECORD
- PRIMARY MONUMENT SET THIS SURVEY
- PRIMARY MONUMENT RECOVERED
- RECORD BEARINGS & DISTANCES, SEE INDIVIDUAL SHEETS FOR SOURCE
- SURVEYED LINE
- LINE NOT SURVEYED THIS PROJECT
- BUILDING SETBACK LINE
- EASEMENT LINE, SEE INDIVIDUAL LABELS
- CENTERLINE OF EASEMENT

APPLICANT'S CERTIFICATE

I, the undersigned, hereby certify that I am the applicant as shown hereon. I hereby approve this survey and plat.

TRACT No. "D", ADL No. 416842.

Chris Grundman
Chris Grundman Date: 9-22-04
6261 Laurel Street, Anchorage, AK 99507

NOTARY'S ACKNOWLEDGEMENT

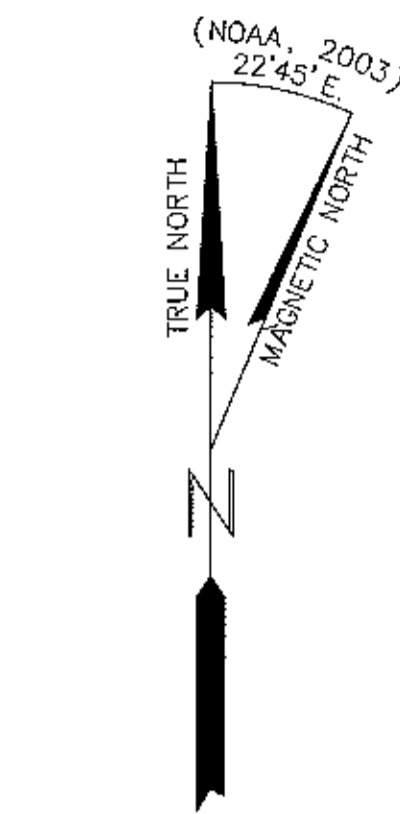
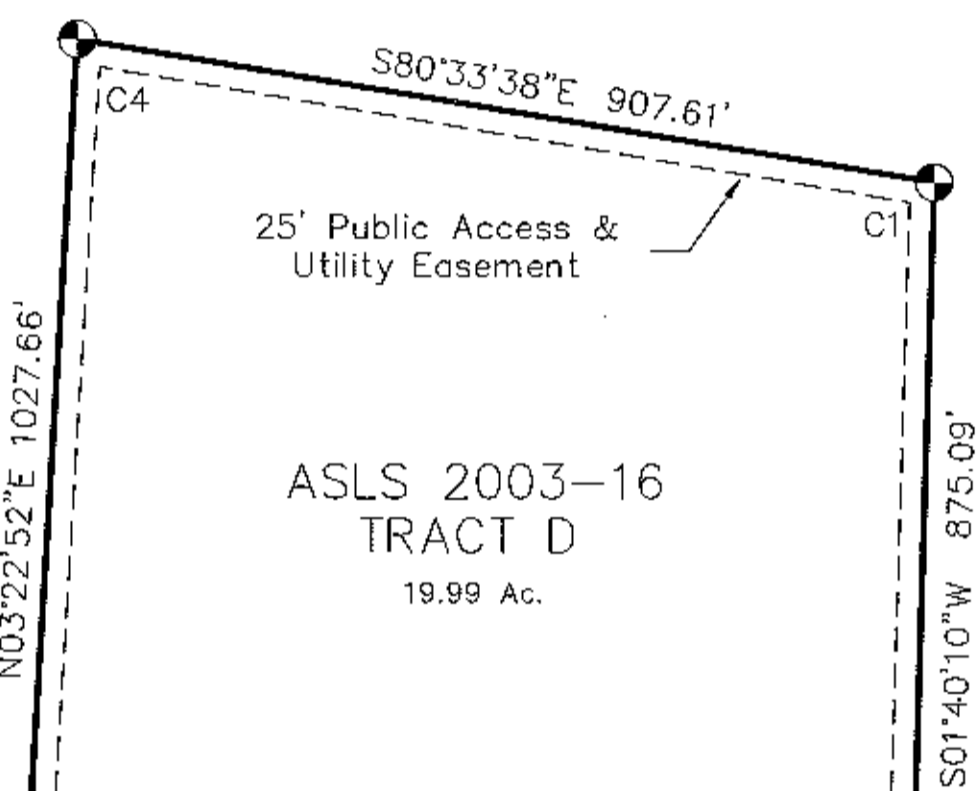
Subscribed and sworn before me this 22 day of Sept, 2004.

For: *CHRIS GRUNDMAN*

Romulo Morales
Notary Public for Alaska
My Commission Expires: 1-9-05



STATE OF ALASKA



APPLICANT'S CERTIFICATE

I, the undersigned, hereby certify that I am the applicant as shown hereon. I hereby approve this survey and plat.

TRACT No. "E", ADL No. 416907.

Charles R. Saylor
Charles R. Saylor Date: 10-22-04
HC 1 Box 3780, Healy, AK 99743

NOTARY'S ACKNOWLEDGEMENT

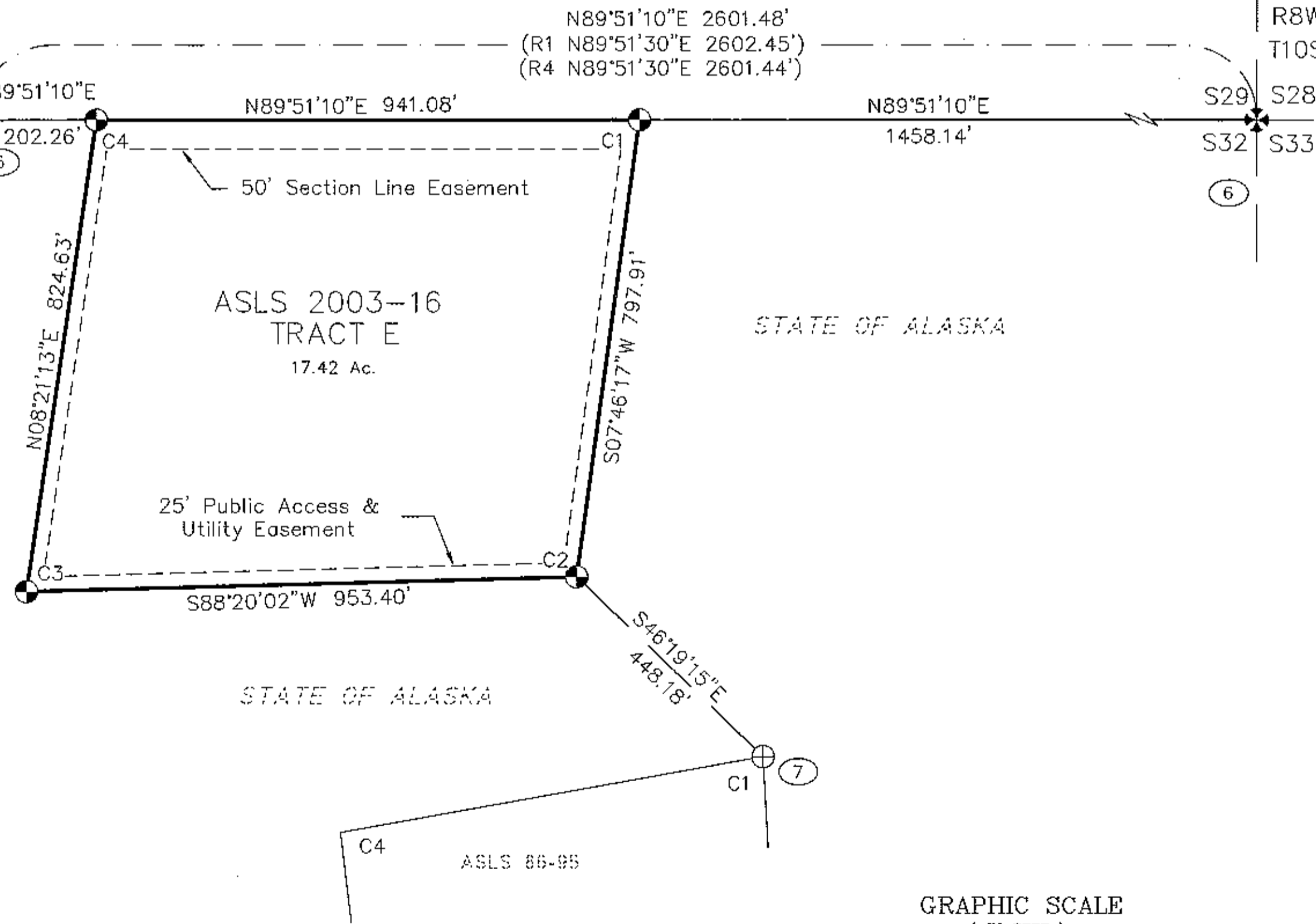
Subscribed and sworn before me this 22 day of October, 2004 for

Charles R. Saylor

Mary R. Alaman
Notary Public for Alaska
My Commission Expires: _____



STATE OF ALASKA



TRACT E MONUMENTATION

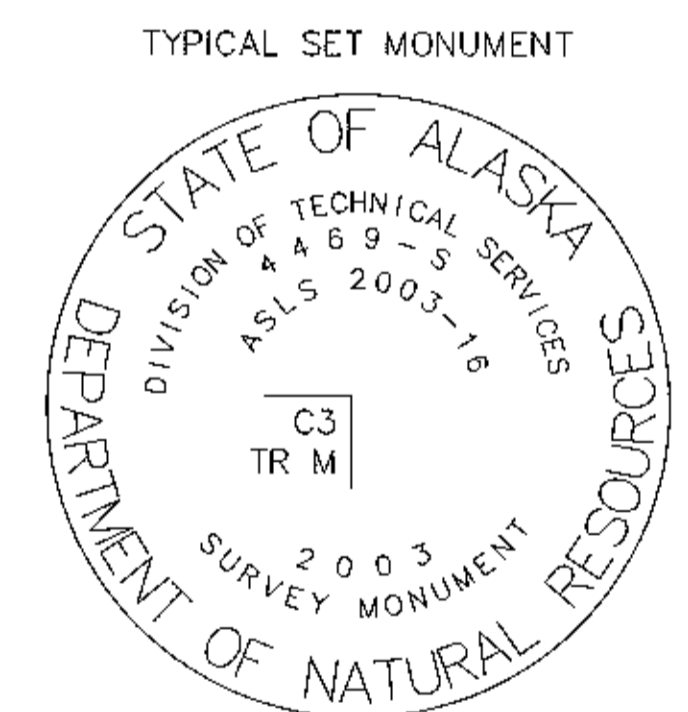
Corner Marking	Description	Bearing Trees
C1 TR E	Set alum. post, 2 1/2 ins. diam., 30 ins. long, 28 ins. in the ground, with alum. cap, 3 1/4 ins. diam., marked as shown.	Found Spruce post, 3 ins. x 5 ft., bears S. 1°30' E., 9.3 ft. dist. New bearing trees and bearing object. Spruce, 3 ins. diam., bears N. 51°45' E., 12.2 ft. dist., mkd. "X". Spruce, 3 ins. diam., bears S. 11°45' W., 20.8 ft. dist., mkd. "X". Spruce, 3 ins. diam., bears N. 88°15' W., 11.8 ft. dist., mkd. "X".
C2 TR E	Set alum. post, 2 1/2 ins. diam., 30 ins. long, 26 ins. in the ground, with alum. cap, 3 1/4 ins. diam., marked as shown.	Found Spruce post, 3 ins. x 5 ft., bears N. 65° E., 7.0 ft. dist. New bearing trees and bearing object. Spruce, 5 ins. diam., bears S. 15°45' E., 12.1 ft. dist., mkd. "X". Spruce post, 3 ins. diam., bears S., 0.6 ft. dist. Spruce, 7 ins. diam., bears S. 85°45' W., 26.6 ft. dist., mkd. "X". Spruce, 3 ins. diam., bears N. 11°45' W., 18.9 ft. dist., mkd. "X".
C3 TR E	Set alum. post, 2 1/2 ins. diam., 30 ins. long, 26 ins. in the ground, with alum. cap, 3 1/4 ins. diam., marked as shown.	Spruce, 7 ins. diam., bears N. 20° E., 20.9 ft. dist., mkd. "X". Spruce, 10 ins. diam., bears S. 7° W., 36.0 ft. dist., mkd. "X". Spruce, 6 ins. diam., bears S. 82° W., 11.1 ft. dist., mkd. "X". Set spruce post, 6 ins. x 6 ins., bears W., 1 ft. dist.
C4 TR E	Set alum. post, 2 1/2 ins. diam., 30 ins. long, 29 ins. in the ground, with alum. cap, 3 1/4 ins. diam., marked as shown.	Found Spruce post, 3 ins. x 4 ins., bears S. 6° W., 8.0 ft. dist. New bearing trees and bearing object. Spruce post, 2 ins. diam., bears N., 1 ft. dist. Spruce, 5 ins. diam., bears N. 83°15' E., 29.6 ft. dist., mkd. "X". Spruce, 5 ins. diam., bears S. 49°45' E., 25.1 ft. dist., mkd. "X". Spruce, 4 ins. diam., bears N. 11° W., 19.6 ft. dist., mkd. "X".
AK. DIV. OF LANDS T10S R8W 1/4 S29 S32 1972	Found an iron post, 0.4 ft. above ground, with brass cap, 3 1/4 ins. diam., marked as shown.	Wooden post, painted white, 2 ins. x 4 ins., bears NW, 1.1 ft. dist. Spruce, 4 ins. diam., bears N. 25° E., 31.1 ft. dist., with nearly healed blaze. (R1 N. 31°41' E., 31.50 ft.) Spruce, 6 ins. diam., bears S. 43° E., 50.0 ft. dist., with open blaze. (R1 S. 38°00' E., 50.2 ft.) Spruce, 5 ins. diam., bears S. 32°30' W., 46.1 ft. dist., with open blaze. (R1 S. 38°10' W., 46.2 ft.) And a new bearing object. Set spruce post, 4 ins. x 5 ft., bears E., 1 ft. dist.
GLO S29 S28 S32 S33 1917	Found an iron post, 1.4 ft. above ground, with brass cap, 2 1/2 ins. diam., marked as shown.	New bearing trees and object. Spruce post, 6 ft. high, 2 ins. x 4 ins., bears N., 1 ft. dist. Spruce, 3 ins. diam., bears N. 69°45' E., 20.5 ft. dist., mkd. with blaze. Spruce, 3 ins. diam., bears S. 19°30' E., 23.3 ft. dist., mkd. with blaze. Spruce, 3 ins. diam., bears N. 50°15' W., 20.5 ft. dist., mkd. with blaze.
ASLS 86-95 C1 LS 5878 1986	Found an alum. post, 1.0 ft. above ground, with alum. cap, 3 1/4 ins. diam., marked as shown.	See record plat information.

TRACT D MONUMENTATION

Corner Marking	Description	Bearing Trees
C1 TR D	Set alum. post, 2 1/2 ins. diam., 30 ins. long, 28 ins. in the ground, with alum. cap, 3 1/4 ins. diam., marked as shown.	Birch, 11 ins. diam., bears N. 67° E., 26.2 ft. dist., mkd. "X". Spruce, 4 ins. diam., bears S. 40° E., 33.2 ft. dist., mkd. "X". Post, 4 ins. x 4 ins. x 7 ft., bears S., 1 ft. dist. Spruce, 12 ins. diam., bears S. 78° W., 41.5 ft. dist., mkd. "X".
C2 TR D	Set alum. post, 2 1/2 ins. diam., 30 ins. long, 26 ins. in the ground, with alum. cap, 3 1/4 ins. diam., marked as shown.	Post, 4 ins. x 4 ins., bears E., 1 ft. dist. Birch, 9 ins. diam., bears N. 70°15' E., 17.5 ft. dist., mkd. "X". Spruce, 9 ins. diam., bears S. 8° E., 35.2 ft. dist., mkd. "X". Spruce, 3 ins. diam., bears N. 73°30' W., 19.0 ft. dist., mkd. "X".
C3 TR D	Set alum. post, 2 1/2 ins. diam., 30 ins. long, 32 ins. in the ground, with alum. cap, 3 1/4 ins. diam., marked as shown.	Post, 4 ins. x 4 ins. x 4 ft., bears E., 1 ft. dist. Spruce, 5 ins. diam., bears N. 29°45' E., 40.5 ft. dist., mkd. "X". Spruce, 4 ins. diam., bears S. 44°15' E., 38.2 ft. dist., mkd. "X". Spruce, 6 ins. diam., bears N. 22° W., 39.4 ft. dist., mkd. "X".
C4 TR D	Set alum. post, 2 1/2 ins. diam., 30 ins. long, 26 ins. in the ground, with alum. cap, 3 1/4 ins. diam., marked as shown.	Found red post, 4 ins., x 4 ins., on 1/2 in. rebar. And new bearing trees and object. Birch post, 4 ins. x 4 ins. x 7 ft., bears N., 1 ft. dist. Birch, 6 ins. diam., bears S. 50°30' E., 16.4 ft. dist., mkd. "X". Birch, 5 ins. diam., bears S. 3°30' W., 10.1 ft. dist., mkd. "X". Birch, 8 ins. diam., bears S. 54°30' W., 26.1 ft. dist., mkd. "X".
AK. DIV. OF LANDS T10S R8W S31 S29 S32 1972	Found iron post, 2 ins. diam., 0.6 ft. above ground, with brass cap, 3 1/4 ins. diam., marked as shown.	Spruce, 4 ins. diam., bears N. 44°45' E., 95.3 ft. dist. White wooden post, 2 ins. x 4 ins., bears NNE, 1.2 ft. dist. Spruce, 3 ins. diam., bears S. 34° E., 77.3 ft. dist. And a new bearing tree. Spruce, 6 ins. diam., bears S. 32° W., 62.6 ft. dist., mkd. "X".

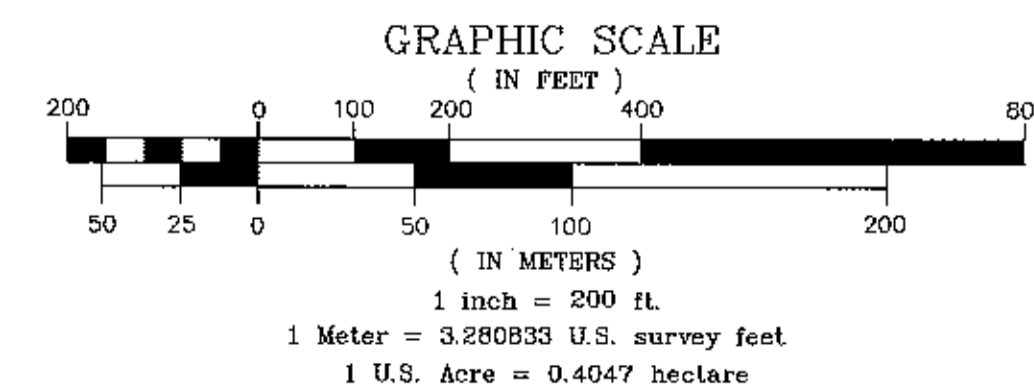
RECORD PLATS REFERENCED THIS SHEET

- R1 Supplemental Cadastral Survey, 73-109, Nenana R. D.
- R4 ASLS 86-95



NENANA 2005-1

DATE OF SURVEY: BEGINNING Aug. 31, 2003 ENDING Sept. 9, 2003	NAME OF SURVEYOR: Mullikin Surveys P.O. Box 790 Homer, AK 99603-0790
STATE OF ALASKA DEPARTMENT OF NATURAL RESOURCES, DIVISION OF MINING, LAND, AND WATER ANCHORAGE, ALASKA	
ALASKA STATE LAND SURVEY 2003-16 WITHIN SURVEYED SECTIONS 29, 30, 31, 32 T.10S., R.8W., F.M., ALASKA Nenana Recording District	
DRAWN BY: TLM, GDS DATE: 3-11-04	APPROVAL RECOMMENDED: <i>Charles Grundman</i> STATE ENGINEERING SUPERVISOR, DATE
SCALE: 1" = 200'	CHECKED FILE NO: DEM, JVM/ASLS 20030016



RIDGE ROCK REMOTE RECREATIONAL CABIN SITES

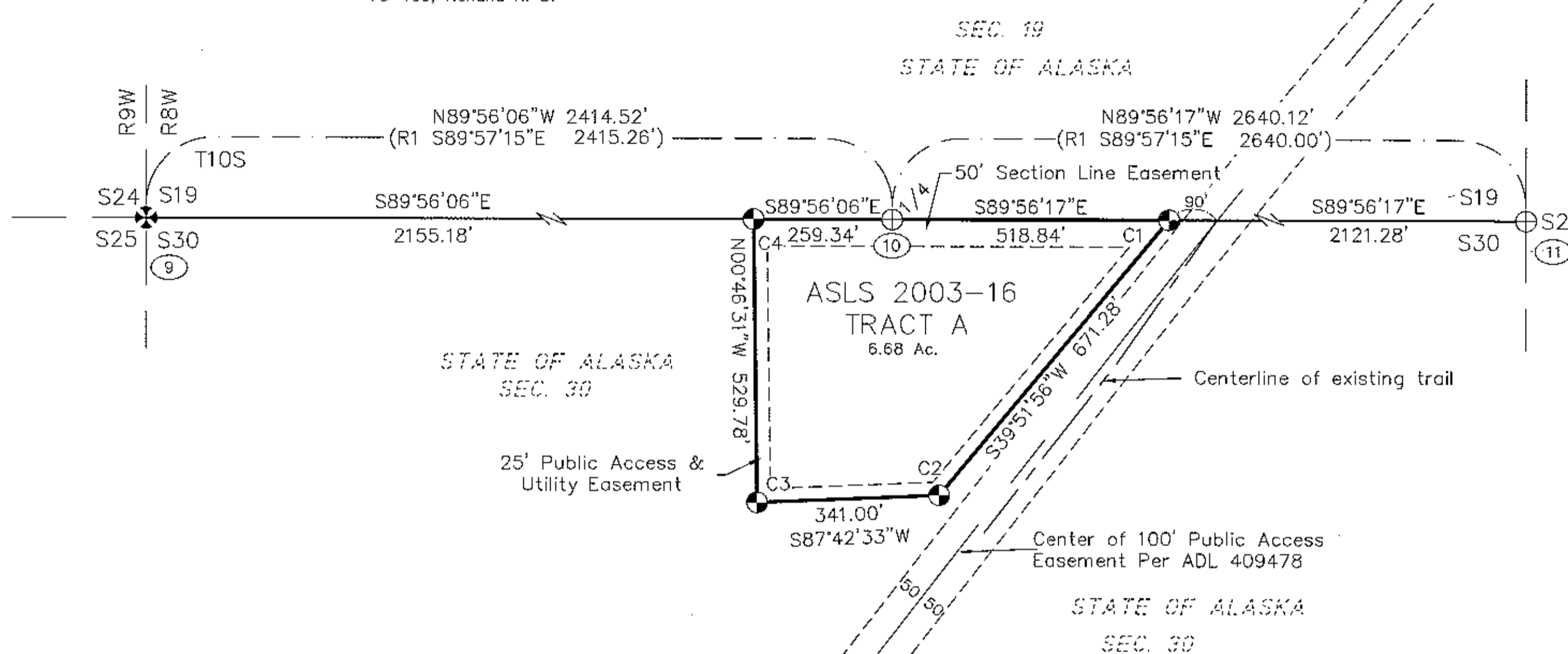
LEGEND:

- ⊗ GLO-BLM MONUMENT RECOVERED
- ⊗ GLO-BLM MONUMENT OF RECORD
- ⊙ PRIMARY MONUMENT SET THIS SURVEY
- ⊕ PRIMARY MONUMENT RECOVERED
- (R) RECORD BEARINGS & DISTANCES, SEE INDIVIDUAL SHEETS FOR SOURCE
- SURVEYED LINE
- - - LINE NOT SURVEYED THIS PROJECT
- - - BUILDING SETBACK LINE
- - - EASEMENT LINE, SEE INDIVIDUAL LABELS
- - - CENTERLINE OF EASEMENT

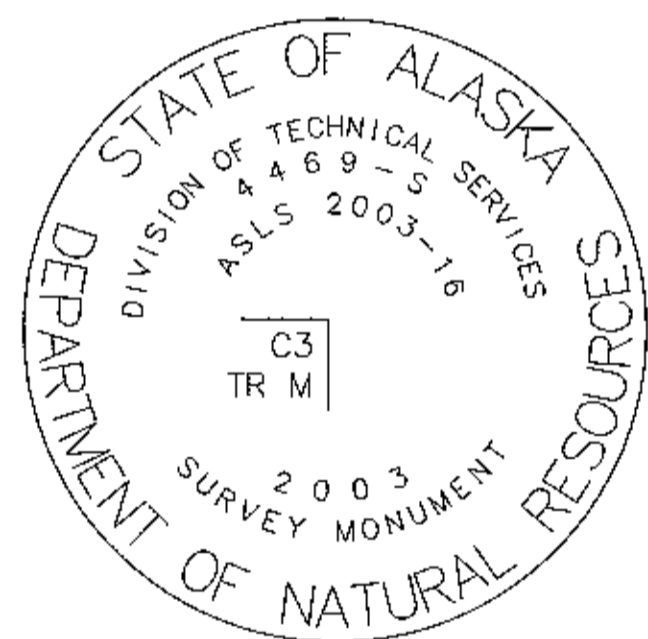
TRACT A MONUMENTATION

Corner Marking	Description	Bearing Trees
C1 TRA 2003	Set alum. post, 2 1/2 ins. diam., 30 ins. long, 26 ins. in the ground, with alum. cap, 3 1/4 ins. diam., marked as shown.	Original post bears S, 6 ft. dist. Edge of trail bears N, 3 ft. dist. New bearing trees and bearing object Spruce, 8 ins. diam., bears S. 29°30' E., 28.7 ft. dist., mkd. "X". Post, 4 ins. x 4 ins. x 6 ft., bears S., 1 ft. dist. Spruce, 5 ins. diam., bears S. 45°30' W., 34.7 ft. dist., mkd. "X". Spruce, 3 ins. diam., bears N. 17° W., 44.2 ft. dist., mkd. "X".
C2 TRA 2003	Set alum. post, 2 1/2 ins. diam., 30 ins. long, 26 ins. in the ground, with alum. cap, 3 1/4 ins. diam., marked as shown.	Spruce, 4 ins. diam., bears N. 2° E., 27.7 ft. dist., mkd. "X". Post, 4 ins. x 4 ins. x 6 ft., bears N. 40° E., 1 ft. dist. Spruce, 6 ins. diam., bears S. 81°30' E., 16.9 ft. dist., mkd. "X". Spruce, 5 ins. diam., bears S. 45° W., 29.6 ft. dist., mkd. "X".
C3 TRA 2003	Set alum. post, 2 1/2 ins. diam., 30 ins. long, 26 ins. in the ground, with alum. cap, 3 1/4 ins. diam., marked as shown.	Found spruce post, 4 ins. diam., bears N., 1.8 ft. dist. New bearing trees and bearing object, Spruce, 5 ins. diam., bears N. 35°30' E., 17.5 ft. dist., mkd. "X". Spruce, 4 ins. diam., bears S. 74°15' E., 4.6 ft. dist., mkd. "X". Spruce, 4 ins. diam., bears S. 67°30' W., 56.0 ft. dist., mkd. "X". Spruce post, 3 ins. diam., bears N. 15° W., 1.0 ft. dist.
C4 TRA 2003	Set alum. post, 2 1/2 ins. diam., 30 ins. long, 2 ins. below the ground, with alum. cap, 3 1/4 ins. diam., marked as shown.	Twin Spruce, 4 ins. diam., bears N. 56° E., 27.4 ft. dist., mkd. "X". Spruce, 4 ins. diam., bears S. 55° E., 25.3 ft. dist., mkd. "X". Spruce, 5 ins. diam., bears S. 51° W., 65.9 ft. dist., mkd. "X". Post, 4 ins. x 4 ins., bears W., 1.1 ft. dist.
T10S R9W R8W S24 S19 S25 S30 1966 BLM	Found an iron post, 2 1/2 ins. diam., 0.7 ft. above ground, with brass cap, 3 1/4 ins. diam., marked as shown.	No pits recovered. New bearing trees and bearing object, Spruce post, 3 ins. x 3 ins. x 6 ft., bears N., 1 ft. dist. Spruce, 5 ins. diam., bears S. 77° E., 56.2 ft. dist., mkd. "X". Spruce, 6 ins. diam., bears N. 89° W., 37.3 ft. dist., mkd. "X". Spruce, 3 ins. diam., bears N. 27° W., 33.6 ft. dist., mkd. "X".
AK. DIV. OF LANDS S19 S30 1972	Found brass cap, leaning, disturbed, reset at position determined by two found bearing trees, 0.4 ft. from found position.	White post, 2 ins. x 4 ins., bears N., 1 ft. dist. No evidence of original NE BT. Spruce, 4 ins. diam., bears S. 32° E., 42.6 ft. dist. (R = S. 33°20' E.) Spruce, 5 ins. diam., bears N. 40° W., 58.4 ft. dist. (R = N. 39°54' W.) And new bearing tree and object, Spruce, 4 ins. diam., bears N. 70°30' E., 65.7 ft. dist., mkd. "X". Post, 4 ins. x 6 ft., bears W., 1 ft. dist.
AK. DIV. OF LANDS T10S R8W S19 S30 1972	Found an iron post, 2 1/2 ins. diam., 0.5 ft. above ground, with brass cap, 3 1/4 ins. diam., marked as shown.	Wooden post, painted white, 2 ins. x 4 ins., bears S. 70° E., 0.4 ft. dist. Wooden post, 4 ins. x 4 ins., bears N. 90° W., 2.3 ft. dist. Spruce, 3 ins. diam., bears N. 35° E., 45.7 ft. dist., with healed blaze; add blaze and mark "X", (R1 N. 37°06' E., 46.2 ft. dist.). Spruce, 6 ins. diam., bears S. 60° E., 48.9 ft. dist., with healed blaze; add blaze and mkd. "X", (R1 S. 58°07' E., 48.5 ft. dist.). Spruce, 7 ins. diam., bears S. 41°30' W., 52.3 ft. dist., with healed blaze; add blaze and mark "X", (R1 S. 45°24' W., 52.7 ft. dist.). And new bearing object, Spruce post, 3 ins. diam., bears N., 1 ft. dist.

RECORD PLATS
REFERENCED THIS SHEET
R1 Supplemental Cadastral Survey,
73-109, Nenana R. D.



TYPICAL SET MONUMENT



APPLICANT'S CERTIFICATE

I, the undersigned, hereby certify that I am the applicant as shown hereon. I hereby approve this survey and plat.

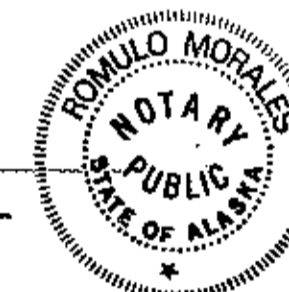
TRACT No. "A", ADL No. 416840.

Andrew Larson
Andrew Larson Date: 10/10/04
501 Harp Circle, Eagle River, AK 99577

NOTARY'S ACKNOWLEDGEMENT

Subscribed and sworn before me this 11th day of Oct., 2004 for

Andrew Larson
Notary Public for Alaska
My Commission Expires: 1-9-05



APPLICANT'S CERTIFICATE

I, the undersigned, hereby certify that I am the applicant as shown hereon. I hereby approve this survey and plat.

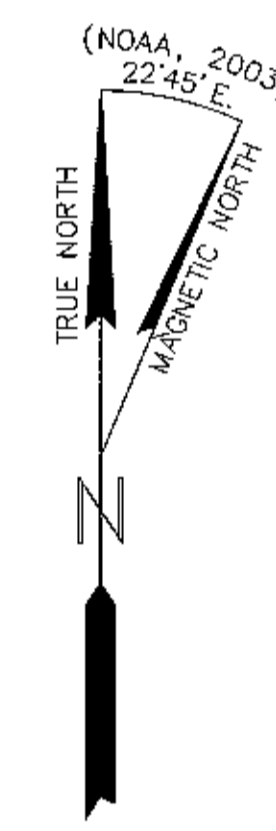
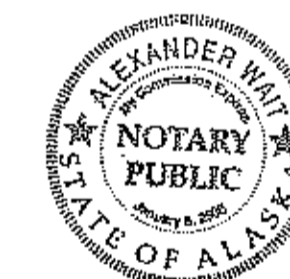
TRACT No. "F", ADL No. 416878.

Daniel Rees
Daniel Rees Date: 11/10/04
3457 Rosie Creek Road
Fairbanks, AK 99709

NOTARY'S ACKNOWLEDGEMENT

Subscribed and sworn before me this 17 day of Nov., 2004 for

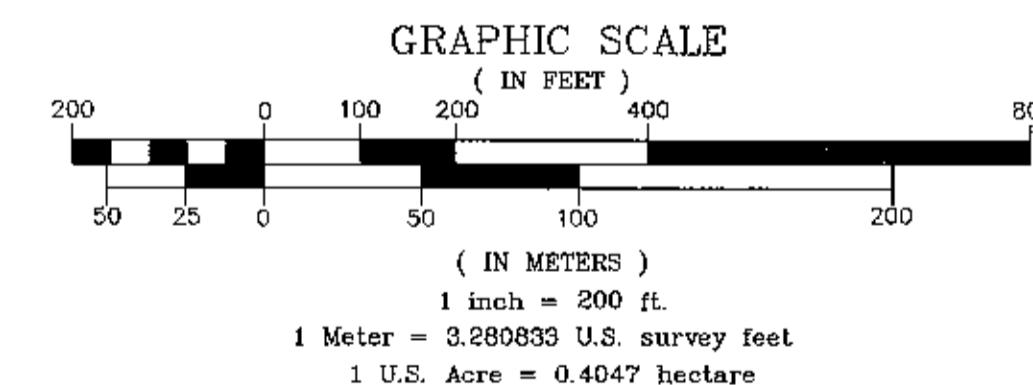
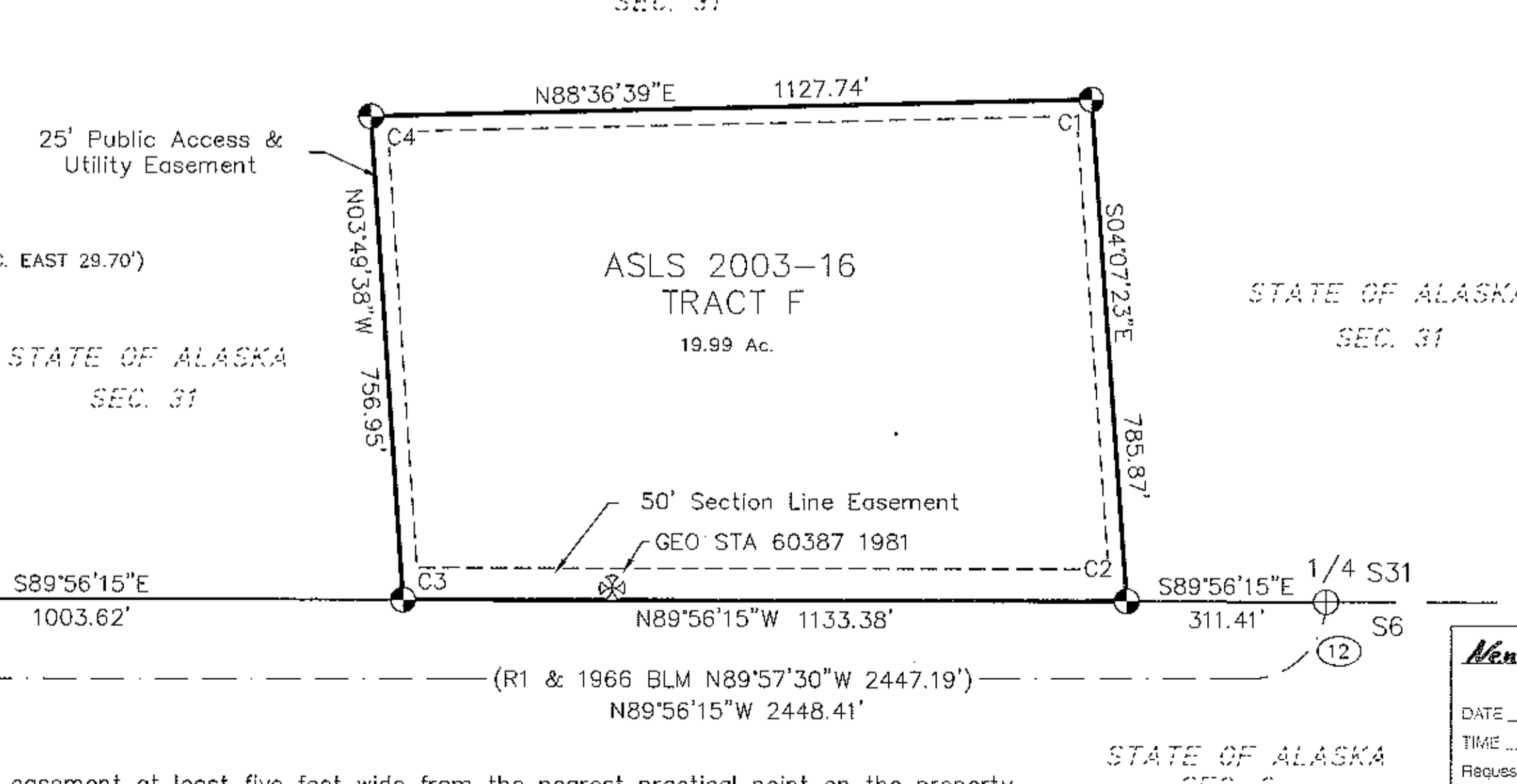
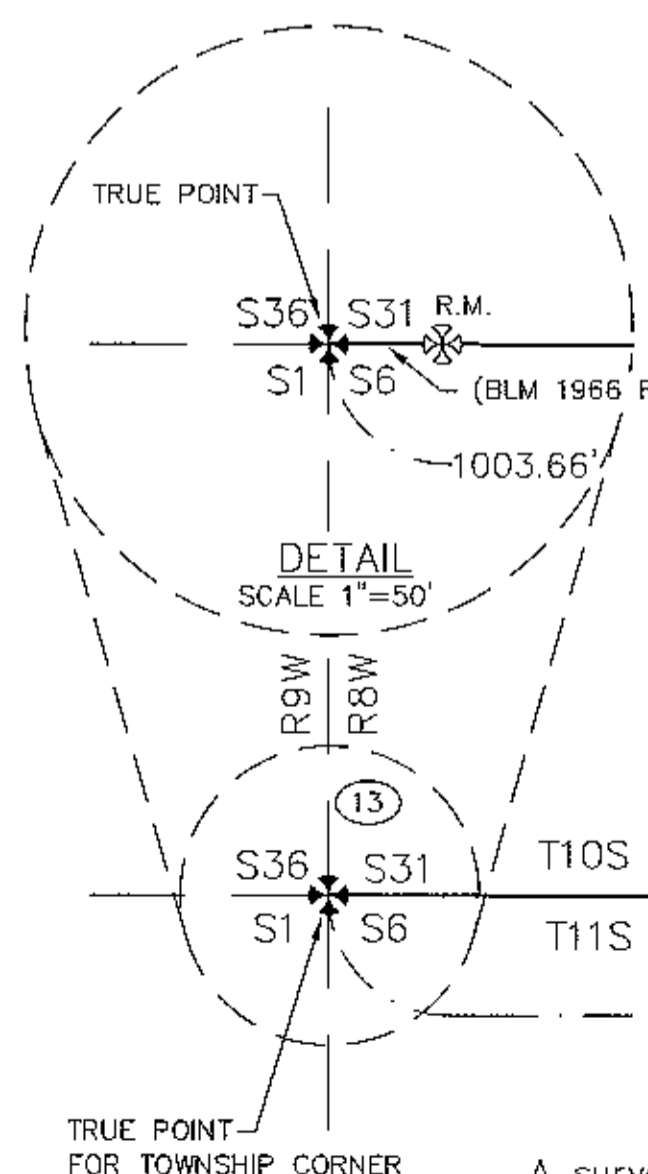
Daniel Rees
Notary Public for Alaska
My Commission Expires: 1/8/08



USGS QUAD
FAIRBANKS(A5), ALASKA
1950 (REV. 1984)

TRACT F MONUMENTATION

Corner Marking	Description	Bearing Trees
C1 TR F 2003	Set alum. post, 2 1/2 ins. diam., 30 ins. long, 28 ins. in the ground, with alum. cap, 3 1/4 ins. diam., marked as shown.	Spruce, 8 ins. diam., bears S. 81°45' E., 74.3 ft. dist., mkd. "X". Spruce, 5 ins. diam., bears S. 33° E., 99.5 ft. dist., mkd. "X". Spruce post, 4 ins. x 4 ins., bears W., 1 ft. dist. Birch, 4 ins. diam., bears N. 9°30' W., 17.0 ft. dist., mkd. "X".
C2 TR F 2003	Set alum. post, 2 1/2 ins. diam., 30 ins. long, 26 ins. in the ground, with alum. cap, 3 1/4 ins. diam., marked as shown.	Spruce, 4 ins. diam., bears S. 11° E., 62.9 ft. dist., mkd. "X". Spruce, 6 ins. diam., bears S. 43°30' W., 109.6 ft. dist., mkd. "X". Spruce post, 3 ins. diam., bears W., 1 ft. dist. Spruce, 5 ins. diam., bears N. 39°15' W., 79.9 ft. dist., mkd. "X".
C3 TR F 2003	Set alum. post, 2 1/2 ins. diam., 30 ins. long, 26 ins. in the ground, with alum. cap, 3 1/4 ins. diam., marked as shown.	Spruce, 4 ins. diam., bears N. 78° E., 5.6 ft. dist., mkd. "X". Post, 4 ins. x 4 ins., bears E., 1 ft. dist. Spruce, 4 ins. diam., bears S. 3° W., 14.6 ft. dist., mkd. "X". Aspen, 5 ins. diam., bears N. 65° W., 12.5 ft. dist., mkd. "X".
C4 TR F 2003	Set alum. post, 2 1/2 ins. diam., 30 ins. long, 26 ins. in the ground, with alum. cap, 3 1/4 ins. diam., marked as shown.	Spruce, 4 ins. diam., bears N. 3° E., 7.3 ft. dist., mkd. "X". Spruce, 5 ins. diam., bears N. 81°30' E., 28.4 ft. dist., mkd. "X". Birch, 6 ins. diam., bears S. 30° W., 10.6 ft. dist., mkd. "X". And new bearing object, Spruce post, 4 ins. x 4 ins., bears S., 1 ft. dist.
AK. DIV. OF LANDS T10S R8W 1/4 S31 S6 T11S 1972	Found brass cap, 3 1/4 ins. diam., marked as shown.	Post, 2 ins. x 4 ins., bears N., 1 ft. dist. Birch, 4 ins. diam., bears S. 32°07' E., 32.0 ft. dist. Birch, 6 ins. diam., bears S. 28°30' W., 43.7 ft. dist. (R = S. 29°28' W., 44.1 ft.) Birch, 7 ins. diam., bears N. 37° W., 23.1 ft. dist. (R = 24 ft.)
TRUE POINT FOR TOWNSHIP CORNER	Found "X" chiseled in top of boulder, 3' x 3' x 4', at edge of Rock Creek.	New bearing trees, Spruce, 7 ins. diam., bears N. 66°45' E., 28.7 ft. dist. Spruce, bears S. 46° E., 24.9 ft. dist. Spruce, 7 ins. diam., bears West, 31.5' dist. found RM Brass Cap, 3 1/4", bears N. 86°15' E., 29.31' dist., mkd. "S31- S6, 1966" from which, Spruce, bears S. 53°30' E., 21.6' dist.



DATE OF SURVEY: BEGINNING Aug. 31, 2003 ENDING Sept. 9, 2003	NAME OF SURVEYOR: Mullikin Surveys P.O. Box 790 Homer, AK 99603-0790
STATE OF ALASKA DEPARTMENT OF NATURAL RESOURCES, DIVISION OF MINING, LAND, AND WATER ANCHORAGE, ALASKA	
ALASKA STATE LAND SURVEY 2003-16	
WITHIN SURVEYED SECTIONS 29, 30, 31, 32 T.10S., R.8W., F.M., ALASKA Nenana Recording District	
DRAWN BY: TLM, GDS DATE: 3-11-04	APPROVAL RECOMMENDED: <i>[Signature]</i> STATE PLATTING SUPERVISOR, DATE 28 Dec 2004
SCALE: 1" = 200'	CHECKED FILE NO: DEM, JVM/ASLS 20030016

2005-1
Nenana REC DIST
DATE 1-13-05
TIME 12:32 P.M.
Requested by *[Signature]*
Address *[Signature]*