

NOTES

A. This survey was accomplished in accordance with AS 38.05.600, RRCS-SI 2003-11 and contract number GSC 665.

B. All bearings shown are true bearings as oriented to the Basis of Bearing and distances shown are reduced to horizontal field distances.

C. The accuracy of the survey is greater than 1:5000.

D. All parcels of land owned by the State of Alaska, located within 50,000 feet of, or bisected by a surveyed or protracted section line, are subject to a 50-foot (50') easement, each side of the section line, which is reserved to the State of Alaska for public highways under A.S. 19.10.010.

E. The existing lessee's claim corners were recovered and used to control the location of the tract boundary.

F. BASIS OF BEARING The Basis of Bearing for this plat was determined by high precision GPS survey using Topcon GGD receivers, differentially corrected and processed using Trimble Total Control, Version 2.73 processing software.

G. BASIS OF COORDINATES The coordinates depicted on the plats are based on a tie to a monument of record using high precision GPS survey techniques. The bearing and distance obtained were applied to the record NAD27 position to compute the NAD27 positions of a corner of each tract.

H. The natural meanders of the line of ordinary high water forms the true bounds of portions of Tracts A, B, E, F, and K. The approximate line of OHW as shown is for area computations only, with the true corners being on the extension of the sidelines and their intersection with the natural meanders.

I. The 2003 mean magnetic declination was determined by calculation using the Magnetic Declination Calculator (MDC) maintained by Natural Resources Canada at http://www.geolab.nrcan.gc.ca/geomag/mirp_e.shtml

J. The Matanuska-Susitna Borough is not responsible for road construction or road maintenance.

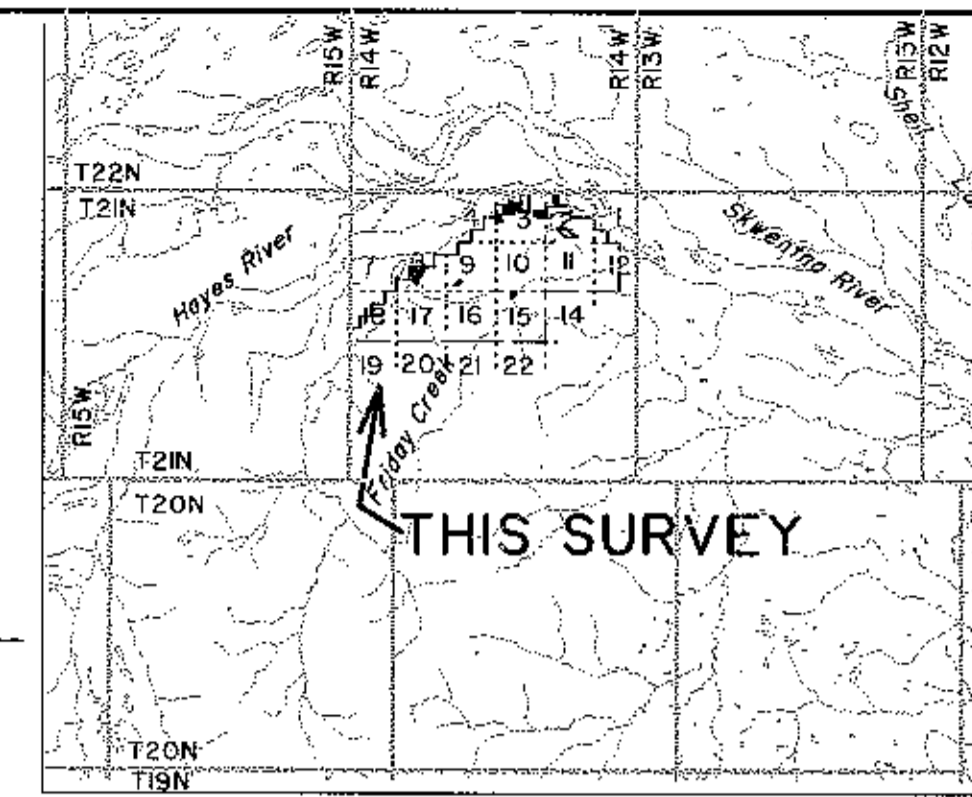
K. There is an 100 foot building setback from the line of ordinary high water of all public and navigable water bodies.

L. There may be federal, state and local requirements governing land use. It is the responsibility of the individual parcel owner to obtain a determination whether such requirements apply to the development of the parcels shown hereon.

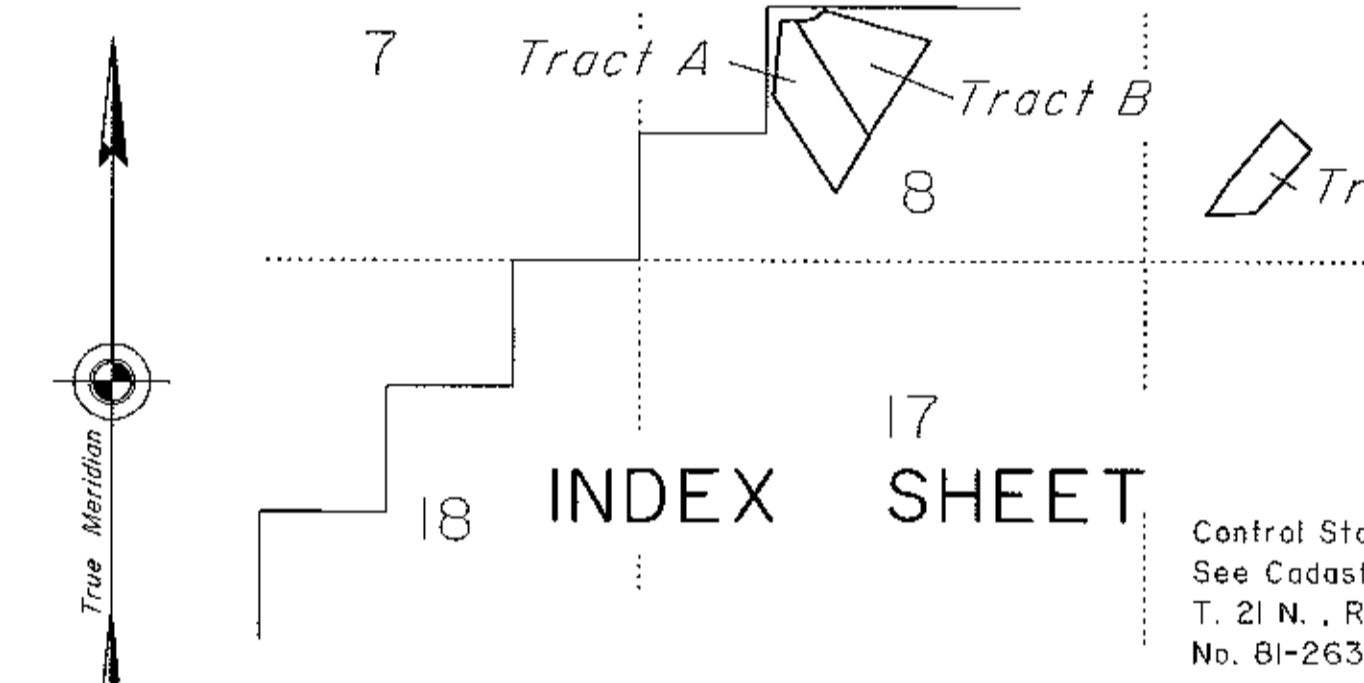
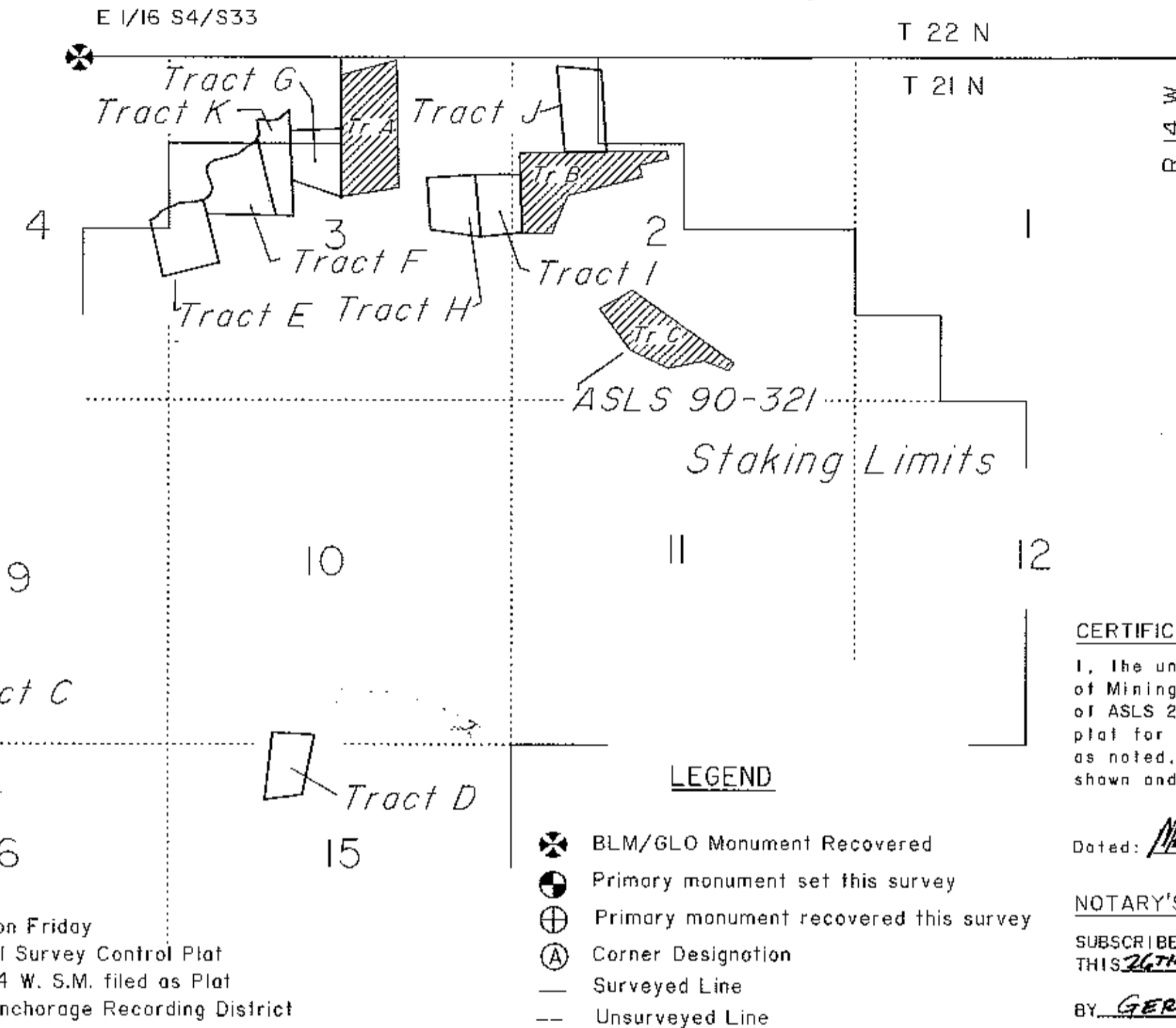
M. No individual water supply system or sewage disposal system shall be permitted on any lot unless such system is located, constructed and equipped in accordance with the requirements, standards and recommendations of the State of Alaska, Department of Environmental Conservation, which govern those systems.

CONTROL SURVEY - NAD83 CORS

* Talkeetna CORS ARP	N 62° 18'	27.55614"	W 150° 25'	12.97660"
* Kenai 1 CORS ARP	N 60° 40'	30.28414"	W 151° 21'	00.57054"
* Shell	N 61° 59'	14.59950"	W 151° 31'	59.20292"
* Friday	N 61° 54'	10.28674"	W 151° 51'	24.68105"
* E 1/16 S33/S4	N 61° 56'	46.16160"	W 151° 50'	37.81291"
* WCMC CI Tract B	N 61° 55'	27.76039"	W 151° 53'	09.64635"
* C3 Tract C	N 61° 55'	16.76147"	W 151° 51'	30.66691"
* C3 Tract D	N 61° 55'	03.98706"	W 151° 49'	36.40399"
* CI Tract G	N 61° 56'	28.42113"	W 151° 48'	31.71956"
* CI Tr H / C4 Tr I	N 61° 56'	35.32062"	W 151° 49'	14.91882"



VICINITY MAP
Scale 1" = 4 miles



Friday Creek Remote Recreational Cabin Sites

Tract A Area=	19.82 acres
Tract B Area=	20.00 acres
Tract C Area=	10.46 acres
Tract D Area=	13.77 acres
Tract E Area=	19.97 acres
Tract F Area=	20.00 acres
Tract G Area=	15.88 acres
Tract H Area=	15.12 acres
Tract I Area=	14.21 acres
Tract J Area=	19.23 acres
Tract K Area=	14.11 acres
Total area=	182.57 acres

SHEET INDEX

TRACT A	SHEET 2
TRACT B	SHEET 2
TRACT C	SHEET 3
TRACT D	SHEET 4
TRACT E	SHEETS 5 & 6
TRACT F	SHEETS 5 & 6
TRACT G	SHEETS 5 & 6
TRACT H	SHEETS 7 & 8
TRACT I	SHEETS 7 & 8
TRACT J	SHEETS 7 & 8
TRACT K	SHEETS 5 & 6

SURVEYOR'S CERTIFICATE

I hereby certify that I am properly registered and licensed to practice land surveying in the State of Alaska, that this plat represents a survey made by me or under my direct supervision, that the monuments shown hereon exist as described, and that all dimensions and other details are correct.

Date: December 8, 2004 Registration No. LS-7045

James E. Mitchell
James E. Mitchell, Registered Land Surveyor

PLAT APPROVAL

I certify that this subdivision plat has been found to comply with the Land Subdivision Regulations of the Matanuska-Susitna Borough and that the plat has been approved by Platting Authority by Plat Resolution 2005-112-SUBA Dated APRIL 15, 2004 and that this plat has been approved for recording in the Anchorage Recording District, Third Judicial District, State of Alaska.

Sean James For. Mark O'Brien 7-12-05
Planning and Land Use Director Date

Attest *Marilyn M. Stueck*
Platting Clerk

CERTIFICATE OF PAYMENT OF TAXES

I hereby certify that all current taxes and special assessments, through Dec, 2005 against the property, included in the subdivision, hereon have been paid.

H. Stueder 7-12-05
BOROUGH TAX COLLECTION OFFICIAL DATE

CERTIFICATE OF OWNERSHIP AND DEDICATION

I, the undersigned, hereby certify that I am the Director, Division of Mining, Land and Water and that the State of Alaska is the owner of ASLS 2003-11 as shown hereon. I hereby approve this survey and plat for the State of Alaska and dedicate for public or private use as noted, all easements, public utility areas, and rights-of-way as shown and described hereon.

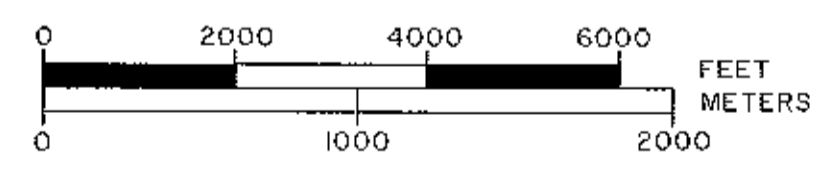
Dated: May 26, 2005 For *Gerald Jennings*
Director, Division of Mining, Land and Water

NOTARY'S ACKNOWLEDGEMENT

SUBSCRIBED AND SWORN TO BEFORE ME THIS 26th DAY OF MAY, 2005

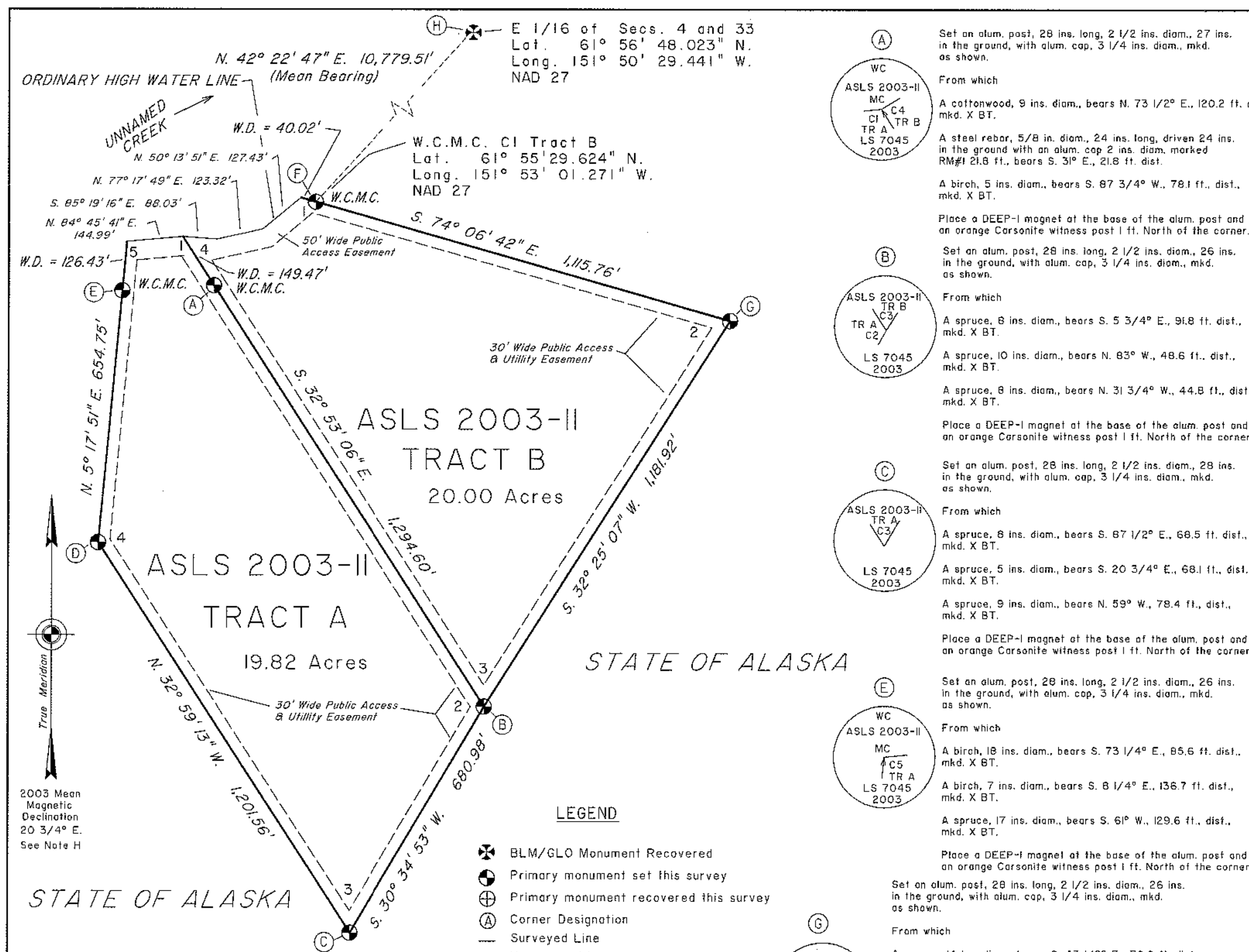
BY: GERALD JENNINGS

[Signature]
NOTARY FOR THE STATE OF ALASKA
MY COMMISSION EXPIRES: 1-9-09



1 Meter = 3.280833 U.S. Survey Feet | U.S. acre = 0.4047 hectare

DATE OF SURVEY: BEGINNING: 09/23/2003 ENDING: 10/03/2003	NAME OF SURVEYOR: The Crazy Mountains JV 2000 E. Dowling Road, #6 Anchorage, AK 99507
STATE OF ALASKA DEPARTMENT OF NATURAL RESOURCES DIVISION OF MINING LAND AND WATER Anchorage, Alaska	
ALASKA STATE LAND SURVEY NO. 2003-11	
WITHIN UNSURVEYED Sections 2,3,4,8,9,10 and 15 T. 21 N., R. 14 W., SEWARD MERIDIAN, ALASKA Anchorage Recording District	
DRAWN BY: JEM DATE: 9/15/2003 SCALE: 1" = 2000'	APPROVAL RECOMMENDED <i>[Signature]</i> 5/26/05 STATEWIDE PLATTING SUPERVISOR DATE CHECKED BY: KJL File No. ASLS 20030011



ASLS 2003-II TRACT B
20.00 Acres

ASLS 2003-II TRACT A
19.82 Acres

STATE OF ALASKA

LEGEND

- BLM/GLO Monument Recovered
- Primary monument set this survey
- Primary monument recovered this survey
- Corner Designation
- Surveyed Line
- Unsurveyed Line

APPLICANT CERTIFICATE

I, THE UNDERSIGNED, HEREBY CERTIFY THAT I AM THE APPLICANT OF TRACT A, ASLS 2003-II, ADL 228594 AS SHOWN HEREON. I HEREBY APPROVE THIS SURVEY AND PLAT.

DATE: 1/31/05

Jennie A. Bargabos
JENNIE A. BARGABOS
P. O. BOX 521836
BIG LAKE, ALASKA 99652

NOTARY'S ACKNOWLEDGEMENT

SUBSCRIBED AND SWORN TO BEFORE ME THIS 31st DAY OF January 2005

BY Jennie A. Bargabos

Jessica L. Schalkowski
NOTARY FOR THE STATE OF ALASKA
MY COMMISSION EXPIRES June 27, 2007

APPLICANT CERTIFICATE

I, THE UNDERSIGNED, HEREBY CERTIFY THAT I AM THE APPLICANT OF TRACT B, ASLS 2003-II, ADL 228405 AS SHOWN HEREON. I HEREBY APPROVE THIS SURVEY AND PLAT.

DATE: 1/31/05

William M. Bargabos
WILLIAM M. BARGABOS
P. O. BOX 521546
BIG LAKE, ALASKA 99652

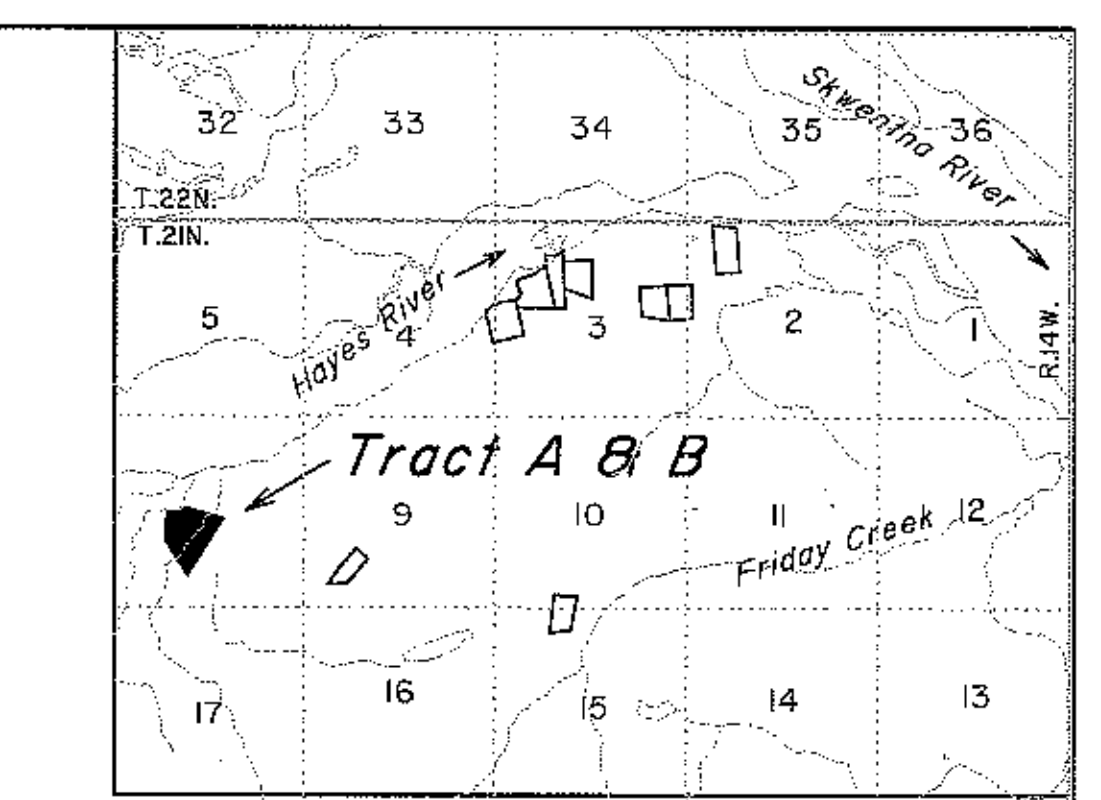
NOTARY'S ACKNOWLEDGEMENT

SUBSCRIBED AND SWORN TO BEFORE ME THIS 31st DAY OF January 2005

BY William M. Bargabos

Jessica L. Schalkowski
NOTARY FOR THE STATE OF ALASKA
MY COMMISSION EXPIRES June 27, 2007

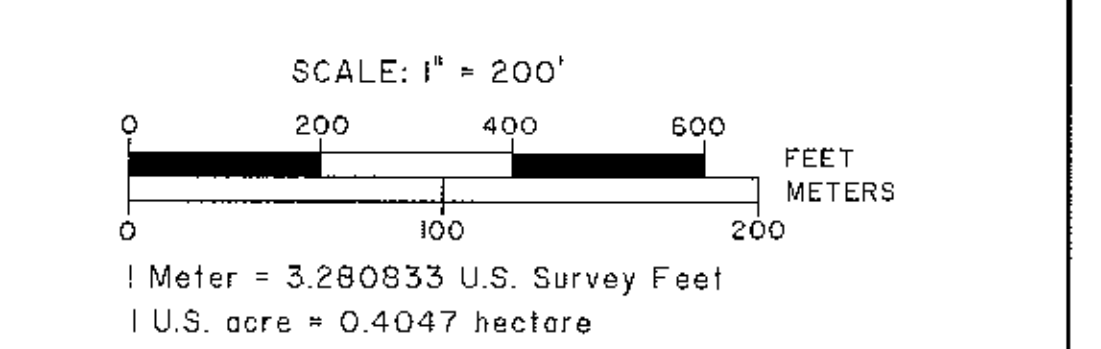
- (A)** Set an alum. post, 28 ins. long, 2 1/2 ins. diam., 27 ins. in the ground, with alum. cap, 3 1/4 ins. diam., mkd. as shown.
From which
A cottonwood, 9 ins. diam., bears N. 73 1/2° E., 120.2 ft. dist., mkd. X BT.
A steel rebar, 5/8 in. diam., 24 ins. long, driven 24 ins. in the ground with an alum. cap 2 ins. diam. marked RM#1 21.8 ft., bears S. 31° E., 21.8 ft. dist.
A birch, 5 ins. diam., bears S. 87 3/4° W., 78.1 ft. dist., mkd. X BT.
Place a DEEP-1 magnet at the base of the alum. post and an orange Carsonite witness post 1 ft. North of the corner.
- (B)** Set an alum. post, 28 ins. long, 2 1/2 ins. diam., 26 ins. in the ground, with alum. cap, 3 1/4 ins. diam., mkd. as shown.
From which
A spruce, 8 ins. diam., bears S. 5 3/4° E., 91.8 ft. dist., mkd. X BT.
A spruce, 10 ins. diam., bears N. 63° W., 48.6 ft. dist., mkd. X BT.
A spruce, 8 ins. diam., bears N. 31 3/4° W., 44.8 ft. dist., mkd. X BT.
Place a DEEP-1 magnet at the base of the alum. post and an orange Carsonite witness post 1 ft. North of the corner.
- (C)** Set an alum. post, 28 ins. long, 2 1/2 ins. diam., 28 ins. in the ground, with alum. cap, 3 1/4 ins. diam., mkd. as shown.
From which
A spruce, 8 ins. diam., bears S. 87 1/2° E., 68.5 ft. dist., mkd. X BT.
A spruce, 5 ins. diam., bears S. 20 3/4° E., 68.1 ft. dist., mkd. X BT.
A spruce, 9 ins. diam., bears N. 59° W., 78.4 ft. dist., mkd. X BT.
Place a DEEP-1 magnet at the base of the alum. post and an orange Carsonite witness post 1 ft. North of the corner.
- (D)** Set an alum. post, 28 ins. long, 2 1/2 ins. diam., 26 ins. in the ground, with alum. cap, 3 1/4 ins. diam., mkd. as shown.
From which
A spruce, 10 ins. diam., bears N. 63° W., 48.6 ft. dist., mkd. X BT.
A spruce, 8 ins. diam., bears N. 31 3/4° W., 44.8 ft. dist., mkd. X BT.
Place a DEEP-1 magnet at the base of the alum. post and an orange Carsonite witness post 1 ft. North of the corner.
- (E)** Set an alum. post, 28 ins. long, 2 1/2 ins. diam., 26 ins. in the ground, with alum. cap, 3 1/4 ins. diam., mkd. as shown.
From which
A birch, 18 ins. diam., bears S. 73 1/4° E., 85.6 ft. dist., mkd. X BT.
A birch, 7 ins. diam., bears S. 8 1/4° E., 136.7 ft. dist., mkd. X BT.
A spruce, 17 ins. diam., bears S. 61° W., 129.6 ft. dist., mkd. X BT.
Place a DEEP-1 magnet at the base of the alum. post and an orange Carsonite witness post 1 ft. North of the corner.
- (F)** Set an alum. post, 28 ins. long, 2 1/2 ins. diam., 27 ins. in the ground, with alum. cap, 3 1/4 ins. diam., mkd. as shown.
From which
A spruce, 9 ins. diam., bears N. 46 1/2° E., 67.7 ft. dist., mkd. X BT.
A spruce, 8 ins. diam., bears S. 61 1/2° E., 19.4 ft. dist., mkd. X BT.
A spruce, 8 ins. diam., bears S. 21 1/4° W., 37.8 ft. dist., mkd. X BT.
Place a DEEP-1 magnet at the base of the alum. post and an orange Carsonite witness post 1 ft. North of the corner.
- (G)** Set an alum. post, 28 ins. long, 2 1/2 ins. diam., 26 ins. in the ground, with alum. cap, 3 1/4 ins. diam., mkd. as shown.
From which
A spruce, 14 ins. diam., bears S. 43 1/2° E., 76.6 ft. dist., mkd. X BT.
A spruce, 8 ins. diam., bears S. 31 1/2° W., 48.7 ft. dist., mkd. X BT.
A birch, 12 ins. diam., bears N. 5° W., 25.2 ft. dist., mkd. X BT.
Place a DEEP-1 magnet at the base of the alum. post and an orange Carsonite witness post 1 ft. North of the corner.
- (H)** Recovered an iron post, firmly set, projecting 3" above the ground with a brass cap, 3 1/4 ins. diam., mkd. as shown.
From which original bearing trees
A spruce, 14 ins. diam., bears N. 22 1/4° E., 66.6 ft. dist., with scribe marks 1/16 S33 BT visible on an open blaze.
A birch, 12 ins. diam., bears N. 78 1/4° E., 72.7 ft. dist., with heated blaze.
A birch, 12 ins. diam., bears S. 8 1/4° W., 96.2 ft. dist., with heated blaze.



U.S.G.S. 1:63,360 Tyonek D-5 & D-6, 1954 SCALE 1" = 1 Mile

VICINITY MAP

- (D)** Set an alum. post, 28 ins. long, 2 1/2 ins. diam., 26 ins. in the ground, with alum. cap, 3 1/4 ins. diam., mkd. as shown.
From which
A birch, 8 ins. diam., bears N. 53 1/2° E., 48.3 ft. dist., mkd. X BT.
A spruce, 15 ins. diam., bears S. 79 1/4° E., 81.9 ft. dist., mkd. X BT.
A spruce, 20 ins. diam., bears S. 59° W., 68.2 ft. dist., mkd. X BT.
Place a DEEP-1 magnet at the base of the alum. post and an orange Carsonite witness post 1 ft. North of the corner.
- (F)** Set an alum. post, 28 ins. long, 2 1/2 ins. diam., 27 ins. in the ground, with alum. cap, 3 1/4 ins. diam., mkd. as shown.
From which
A spruce, 9 ins. diam., bears N. 46 1/2° E., 67.7 ft. dist., mkd. X BT.
A spruce, 8 ins. diam., bears S. 61 1/2° E., 19.4 ft. dist., mkd. X BT.
A spruce, 8 ins. diam., bears S. 21 1/4° W., 37.8 ft. dist., mkd. X BT.
Place a DEEP-1 magnet at the base of the alum. post and an orange Carsonite witness post 1 ft. North of the corner.



DATE OF SURVEY: BEGINNING: 09/23/2003 ENDING: 10/03/2003	NAME OF SURVEYOR: The Crazy Mountains JV 2000 E. Dowling Road, #6 Anchorage, AK 99507
STATE OF ALASKA DEPARTMENT OF NATURAL RESOURCES DIVISION OF MINING, LAND AND WATER Anchorage, Alaska	
ALASKA STATE LAND SURVEY NO. 2003-II	
WITHIN UNSURVEYED Sections 2, 3, 4, 8, 9, 10 and 15 T. 21 N., R. 14 W., SEWARD MERIDIAN, ALASKA Anchorage Recording District	
DRAWN BY: JEM DATE: 03/04/2004	APPROVAL RECOMMENDED <u>[Signature]</u> 5/26/05 STATEWIDE PLATTING SUPERVISOR DATE
SCALE: 1" = 200'	CHECKED BY: KJL File No. ASLS 200300II

(A) Set an alum. post, 28 ins. long, 2 1/2 ins. diam., 27 ins. in the ground, with alum. cap, 3 1/4 ins. diam., mkd. as shown.
 From which
 A spruce, 10 ins. diam., bears S. 30 1/4° E., 29.3 ft. dist., mkd. X BT.
 A twin spruce, 12 ins. diam., bears S. 10° W., 42.3 ft. dist., mkd. X BT.
 A spruce, 14 ins. diam., bears N. 68 1/2° W., 29.5 ft., dist., mkd. X BT.
 Place a DEEP-I magnet at the base of the alum. post and an orange Carsonite witness post 1 ft. North of the corner.

(B) Set an alum. post, 28 ins. long, 2 1/2 ins. diam., 26 ins. in the ground, with alum. cap, 3 1/4 ins. diam., mkd. as shown.
 From which
 A spruce, 8 ins. diam., bears S. 47° W., 40.0 ft., dist., mkd. X BT.
 A spruce, 8 ins. diam., bears N. 84 1/4° W., 52.5 ft., dist., mkd. X BT.
 A spruce, 8 ins. diam., bears N. 1° W., 14.9 ft. dist., mkd. X BT.
 Place a DEEP-I magnet at the base of the alum. post and an orange Carsonite witness post 1 ft. North of the corner.

(C) Set an alum. post, 28 ins. long, 2 1/2 ins. diam., 26 ins. in the ground, with alum. cap, 3 1/4 ins. diam., mkd. as shown.
 From which
 A spruce, 9 ins. diam., bears N. 73 1/4° E., 60.9 ft. dist., mkd. X BT.
 A spruce, 8 ins. diam., bears S. 77 1/2° W., 60.6 ft. dist., mkd. X BT.
 A spruce, 9 ins. diam., bears N. 52° W., 35.8 ft. dist., mkd. X BT.
 Place a DEEP-I magnet at the base of the alum. post and an orange Carsonite witness post 1 ft. North of the corner.

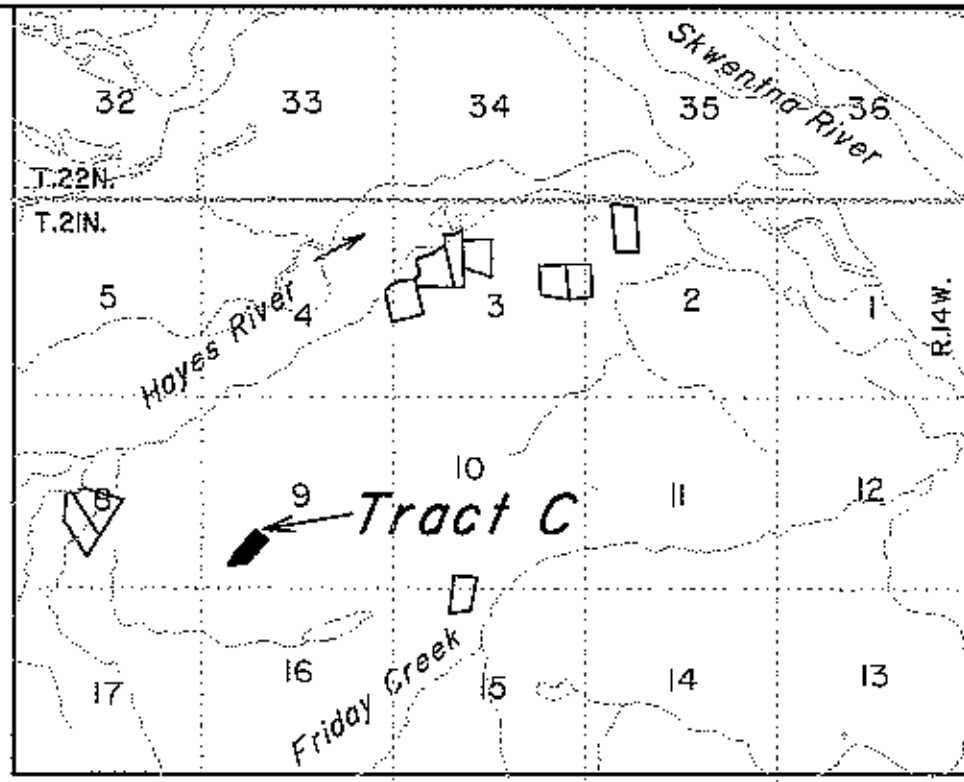
E 1/16 of Secs. 4 and 33
 Lat. 61° 56' 48.023" N.
 Long. 151° 50' 29.441" W.
 NAD 27

C3 Tract C
 Lat. 61° 55' 18.625" N.
 Long. 151° 51' 22.294" W.
 NAD 27

(D) Set an alum. post, 28 ins. long, 2 1/2 ins. diam., 26 ins. in the ground, with alum. cap, 3 1/4 ins. diam., mkd. as shown.
 From which
 A spruce, 3 ins. diam., bears N. 47 3/4° E., 29.0 ft. dist., mkd. X BT.
 A spruce, 12 ins. diam., bears S. 65° W., 33.5 ft. dist., mkd. X BT.
 A spruce, 14 ins. diam., bears N. 53° W., 95.6 ft., dist., mkd. X BT.
 Place a DEEP-I magnet at the base of the alum. post and an orange Carsonite witness post 1 ft. North of the corner.

(E) Set an alum. post, 28 ins. long, 2 1/2 ins. diam., 26 ins. in the ground, with alum. cap, 3 1/4 ins. diam., mkd. as shown.
 From which
 A spruce, 11 ins. diam., bears N. 76° E., 24.7 ft. dist., mkd. X BT.
 A spruce, 10 ins. diam., bears S. 83° W., 15.6 ft., dist., mkd. X BT.
 A spruce, 12 ins. diam., bears N. 25 1/2° W., 15.0 ft., dist., mkd. X BT.
 Place a DEEP-I magnet at the base of the alum. post and an orange Carsonite witness post 1 ft. North of the corner.

(F) Recovered an iron post, firmly set, projecting 3" above the ground with a brass cap, 3 1/4 ins. diam., mkd. as shown.
 From which original bearing trees
 A spruce, 14 ins. diam., bears N. 22 1/4° E., 66.6 ft. dist., with scribe marks 1/16 S33 BT visible on an open blaze.
 A birch, 12 ins. diam., bears N. 78 1/4° E., 72.7 ft., dist., with healed blaze.
 A birch, 12 ins. diam., bears S. 8 1/4° W., 96.2 ft., dist., with healed blaze.



U.S.G.S. I:63,360 Tyonek D-5 & D-6, 1954 SCALE 1" = 1 Mile

VICINITY MAP

Recovered an iron post, firmly set, projecting 3" above the ground with a brass cap, 3 1/4 ins. diam., mkd. as shown.
 From which original bearing trees
 A spruce, 14 ins. diam., bears N. 22 1/4° E., 66.6 ft. dist., with scribe marks 1/16 S33 BT visible on an open blaze.
 A birch, 12 ins. diam., bears N. 78 1/4° E., 72.7 ft., dist., with healed blaze.
 A birch, 12 ins. diam., bears S. 8 1/4° W., 96.2 ft., dist., with healed blaze.

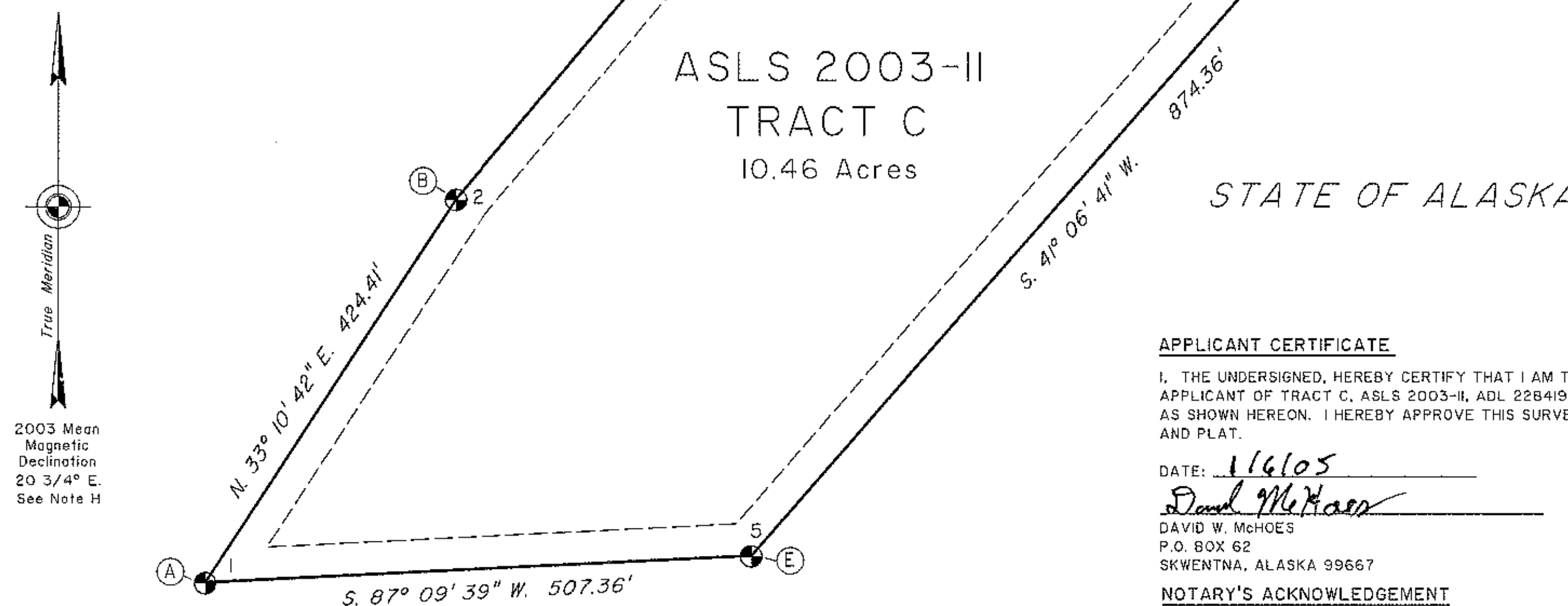
LEGEND

- ⊗ BLM/GLO Monument Recovered
- ⊙ Primary monument set this survey
- ⊕ Primary monument recovered this survey
- ⓐ Corner Designation
- Surveyed Line
- - - Unserved Line

STATE OF ALASKA

ASLS 2003-II
 TRACT C
 10.46 Acres

STATE OF ALASKA



2003 Mean Magnetic Declination 20 3/4° E. See Note H

APPLICANT CERTIFICATE

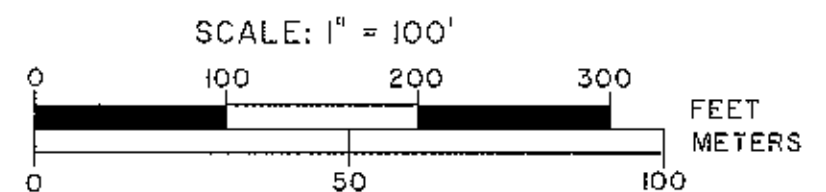
I, THE UNDERSIGNED, HEREBY CERTIFY THAT I AM THE APPLICANT OF TRACT C, ASLS 2003-II, ADL 228419 AS SHOWN HEREON. I HEREBY APPROVE THIS SURVEY AND PLAT.

DATE: 1/16/05
David W. McHoes
 DAVID W. McHOES
 P.O. BOX 62
 SKWENTNA, ALASKA 99667

NOTARY'S ACKNOWLEDGEMENT
 SUBSCRIBED AND SWORN TO BEFORE ME THIS 6TH DAY OF JANUARY, 2005
 BY *David W. McHoes*

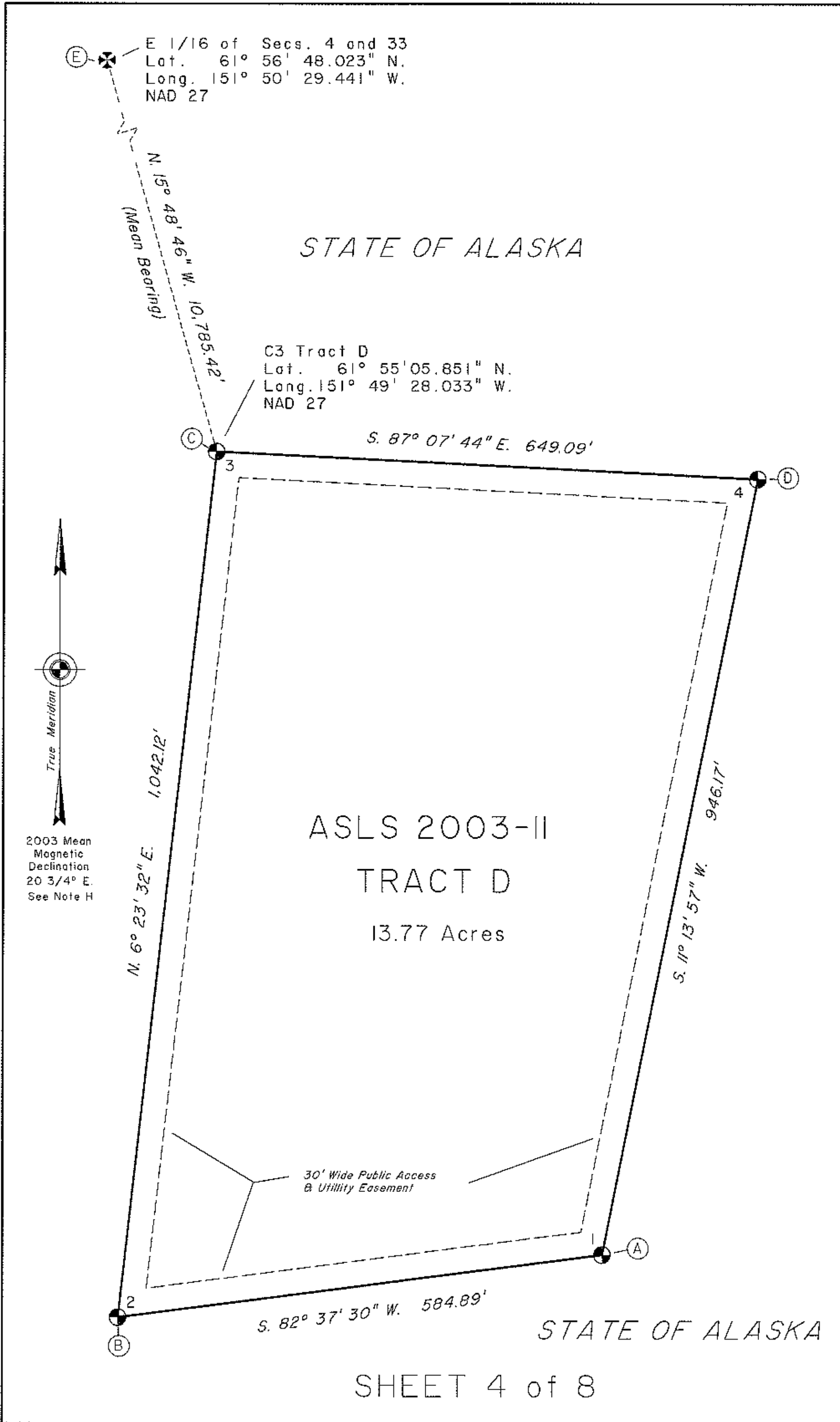


Ron L...
 NOTARY FOR THE STATE OF ALASKA
 MY COMMISSION EXPIRES 1-9-05



1 Meter = 3.280833 U.S. Survey Feet | U.S. acre = 0.4047 hectare

DATE OF SURVEY: BEGINNING: 09/23/2003 ENDING: 10/03/2003	NAME OF SURVEYOR: The Crazy Mountains JV 2000 E. Dowling Road, #6 Anchorage, AK 99507
STATE OF ALASKA DEPARTMENT OF NATURAL RESOURCES DIVISION OF MINING, LAND AND WATER Anchorage, Alaska	
ALASKA STATE LAND SURVEY NO. 2003-II	
WITHIN UNSURVEYED Sections 2, 3, 4, 8, 9, 10 and 15 T. 21 N., R. 14 W., SEWARD MERIDIAN, ALASKA Anchorage Recording District	
DRAWN BY: JEM DATE: 03/04/2004 SCALE: 1" = 100'	APPROVAL RECOMMENDED <i>David W. McHoes</i> 5/26/05 STATEWIDE PLATTING SUPERVISOR DATE CHECKED BY: KJL File No. ASLS 200300II



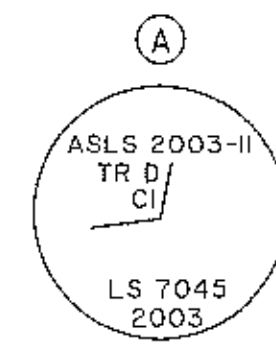
2003 Mean
Magnetic
Declination
20 3/4° E
See Note H

STATE OF ALASKA

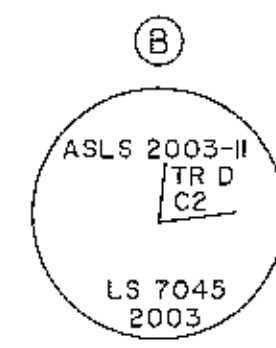
ASLS 2003-II
TRACT D
13.77 Acres

STATE OF ALASKA

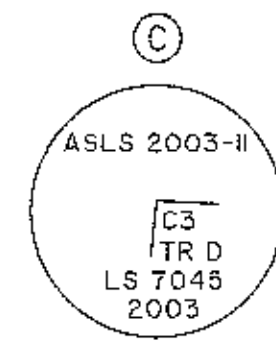
SHEET 4 of 8



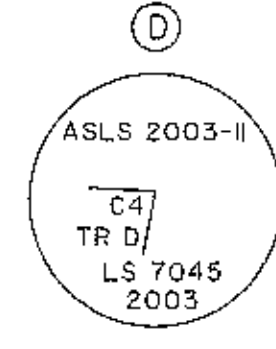
(A) Set an alum. post, 28 ins. long, 2 1/2 ins. diam., 26 ins. in the ground, with alum. cap, 3 1/4 ins. diam., mkd. as shown.
From which
A birch, 10 ins. diam., bears N. 17 1/2° E., 112.9 ft. dist., mkd. X BT.
A birch, 9 ins. diam., bears S. 24 1/2° W., 23.0 ft., dist., mkd. X BT.
A steel rebar, 5/8 in. diam., 24 ins. long, driven 23 ins. in the ground with an alum. cap, 2 ins. diam., marked RM#1 28.1 ft., bears S. 85 3/4° W., 28.1 ft. dist.
Place a DEEP-I magnet at the base of the alum. post and an orange Carsonite witness post 1 ft. North of the corner.



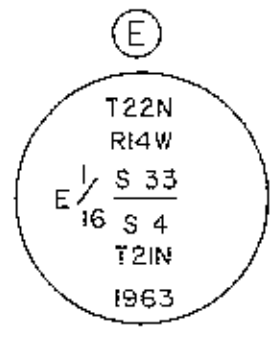
(B) Set an alum. post, 28 ins. long, 2 1/2 ins. diam., 26 ins. in the ground, with alum. cap, 3 1/4 ins. diam., mkd. as shown.
From which
A steel rebar, 5/8 in. diam., 24 ins. long, driven 23 ins. in the ground with an alum. cap 2 ins. diam., marked RM#1 26.3 ft., bears N. 11 1/2° E., 26.3 ft. dist.
A spruce, 12 ins. diam., bears S. 27° E., 86.2 ft. dist., mkd. X BT.
A spruce, 8 ins. diam., bears S. 32° W., 66.4 ft., dist., mkd. X BT.
Place a DEEP-I magnet at the base of the alum. post and an orange Carsonite witness post 1 ft. North of the corner.



(C) Set an alum. post, 28 ins. long, 2 1/2 ins. diam., 26 ins. in the ground, with alum. cap, 3 1/4 ins. diam., mkd. as shown.
From which
A birch, 6 ins. diam., bears N. 32° E., 66.3 ft. dist., mkd. X BT.
A spruce, 13 ins. diam., bears S. 8° W., 96.6 ft. dist., mkd. X BT.
A spruce, 13 ins. diam., bears N. 13 1/2° W., 72.4 ft. dist., mkd. X BT.
Place a DEEP-I magnet at the base of the alum. post and an orange Carsonite witness post 1 ft. North of the corner.



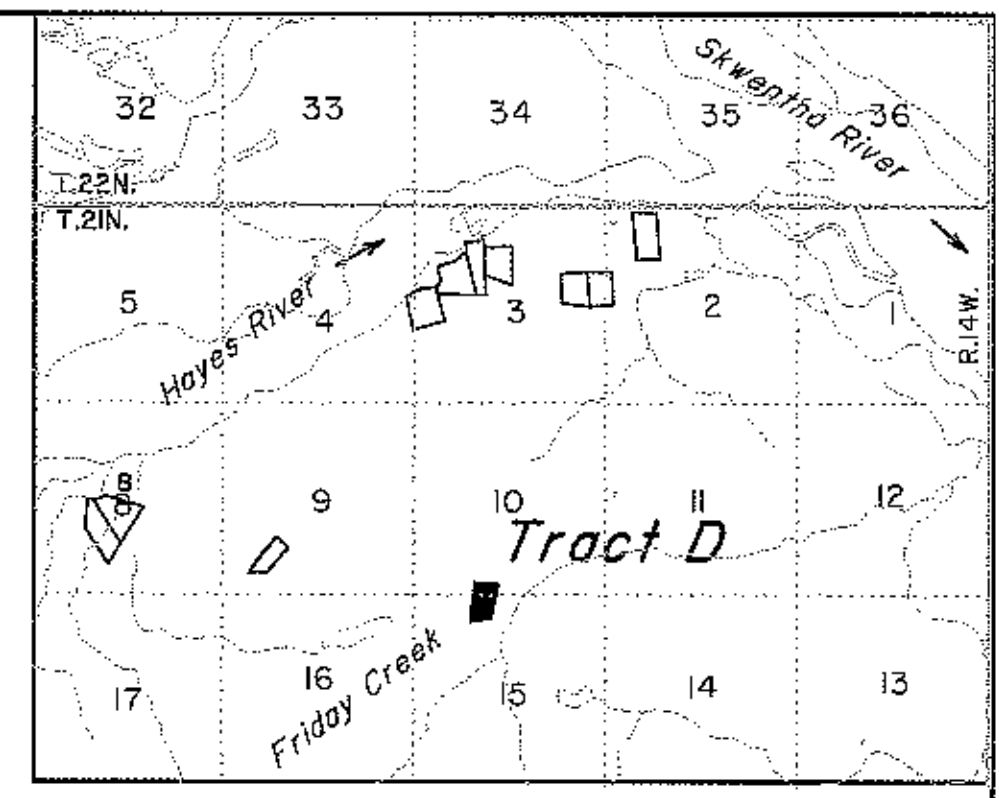
(D) Set an alum. post, 28 ins. long, 2 1/2 ins. diam., 26 ins. in the ground, with alum. cap, 3 1/4 ins. diam., mkd. as shown.
From which
A spruce, 11 ins. diam., bears S. 21° E., 72.1 ft. dist., mkd. X BT.
A spruce, 14 ins. diam., bears S. 3° E., 105.0 ft., dist., mkd. X BT.
A steel rebar, 5/8 in. diam., 24 ins. long, driven 23 ins. in the ground with an alum. cap 2 ins. diam., marked RM#1 26.3 ft., bears S. 82 1/2° E., 26.3 ft. dist.
Place a DEEP-I magnet at the base of the alum. post and an orange Carsonite witness post 1 ft. North of the corner.



(E) Recovered an iron post, firmly set, projecting 5\"/>

LEGEND

- ⊗ BLM/GLO Monument Recovered
- ⊕ Primary monument set this survey
- ⊙ Primary monument recovered this survey
- ⊙ Corner Designation
- Surveyed Line
- Unsurveyed Line



U.S.G.S. 1:63,360 Tyonek D-5 & D-6, 1954 SCALE 1" = 1 Mile

VICINITY MAP

APPLICANT CERTIFICATE

I, THE UNDERSIGNED, HEREBY CERTIFY THAT I AM THE APPLICANT OF TRACT D, ASLS 2003-II, ADL 228573 AS SHOWN HEREON. I HEREBY APPROVE THIS SURVEY AND PLAT.

DATE: 5-13-05

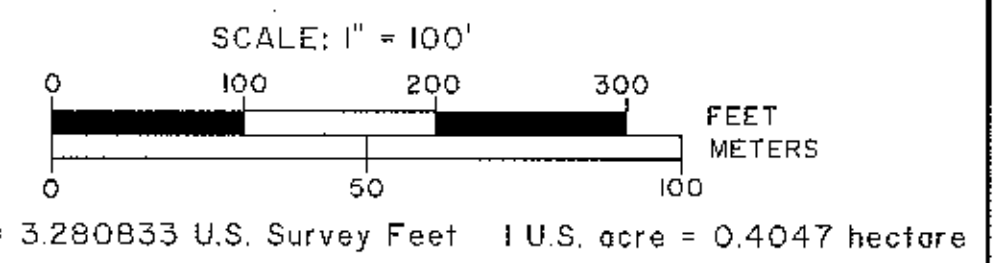
Clinton P. Cerda
CLINTON P. CERDA
P.O. BOX 2954
PALMER, ALASKA 99645

NOTARY'S ACKNOWLEDGEMENT

SUBSCRIBED AND SWORN TO BEFORE ME THIS 13 DAY OF May, 2005

BY: Clinton P. Cerda

Jessica L. Schalkowski
NOTARY FOR THE STATE OF ALASKA
MY COMMISSION EXPIRES June 27, 2007

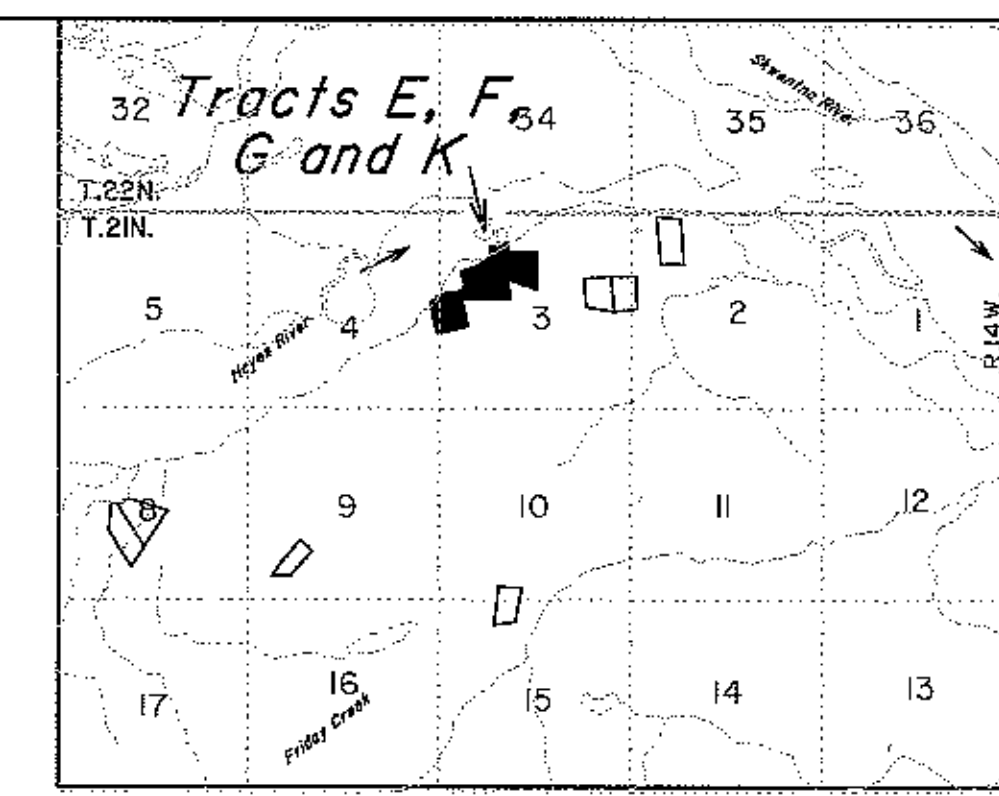
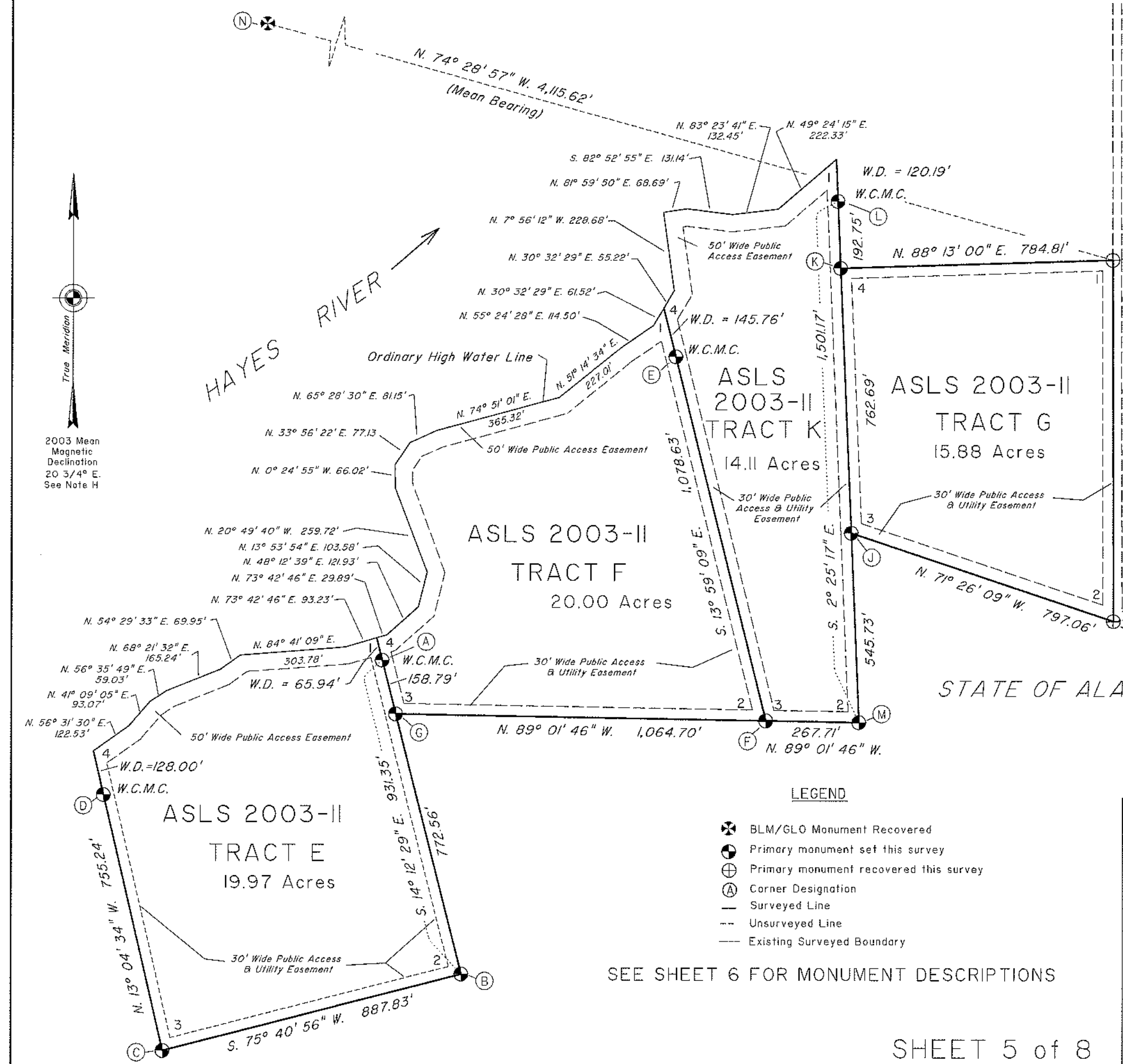


DATE OF SURVEY: BEGINNING: 09/23/2003 ENDING: 10/03/2003	NAME OF SURVEYOR: The Crazy Mountains JV 2000 E. Dowling Road, #6 Anchorage, AK 99507
STATE OF ALASKA DEPARTMENT OF NATURAL RESOURCES DIVISION OF MINING, LAND AND WATER Anchorage, Alaska	
ALASKA STATE LAND SURVEY NO. 2003-II	
WITHIN UNSURVEYED Sections 2, 3, 4, 8, 9, 10 and 15 T. 21 N., R. 14 W., SEWARD MERIDIAN, ALASKA Anchorage Recording District	
DRAWN BY: JEM DATE: 3/04/2004	APPROVAL RECOMMENDED <u>Jessica L. Schalkowski</u> 5/26/05 STATEWIDE PLATTING SUPERVISOR DATE
SCALE: 1" = 100'	CHECKED BY: KJL File No. ASLS 200300II

Anchorage Recording District 2005-87

E 1/16 of Secs. 4 and 33
 Lat. 61° 56' 48.023" N.
 Long. 151° 50' 29.441" W.
 NAD 27

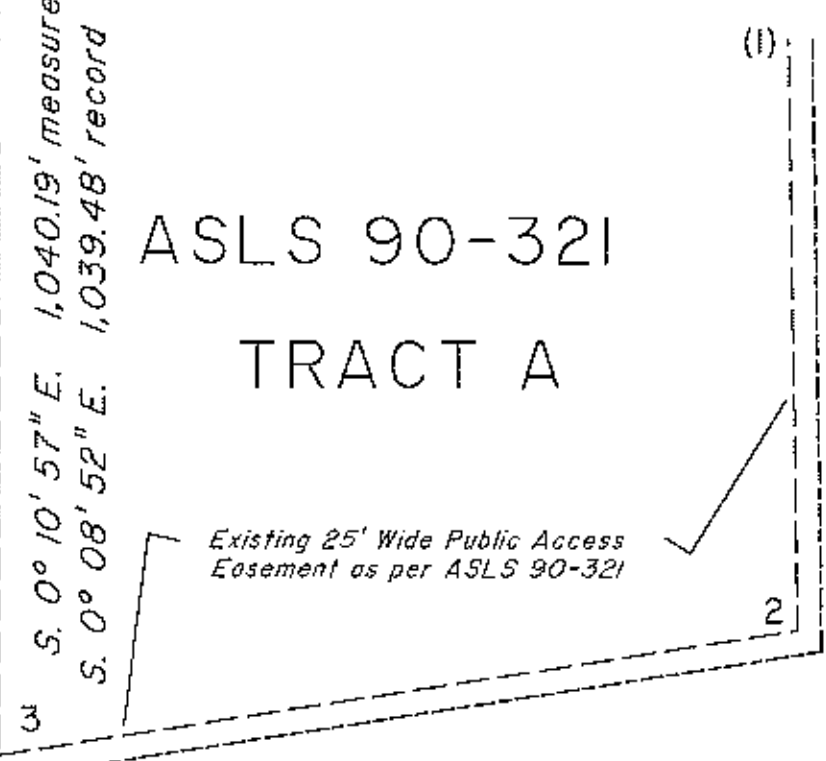
2003 Mean
 Magnetic
 Declination
 20 3/4° E.
 See Note H



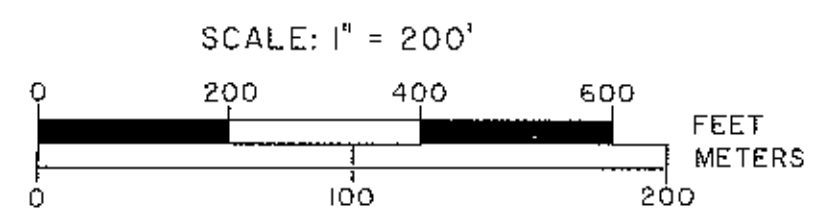
U.S.G.S. I:63.360 Tyonek D-5 & D-6, 1954 SCALE 1" = 1 Mile

VICINITY MAP

CI Tract G / POL Line 3-4 Tract A ASLS 90-321
 Lat. 61° 56' 37.182" N.
 Long. 151° 49' 06.549" W.
 NAD 27



STATE OF ALASKA



1 Meter = 3.280833 U.S. Survey Feet | U.S. acre = 0.4047 hectare

- LEGEND**
- ⊗ BLM/GLO Monument Recovered
 - ⊙ Primary monument set this survey
 - ⊕ Primary monument recovered this survey
 - Ⓐ Corner Designation
 - Surveyed Line
 - - - Unsurveyed Line
 - Existing Surveyed Boundary

SEE SHEET 6 FOR MONUMENT DESCRIPTIONS

SHEET 5 of 8

Anchorage Recording District 2005-82

DATE OF SURVEY: BEGINNING: 09/23/2003 ENDING: 10/03/2003	NAME OF SURVEYOR: The Crazy Mountains JV 2000 E. Dowling Road, #6 Anchorage, AK 99507
STATE OF ALASKA DEPARTMENT OF NATURAL RESOURCES DIVISION OF MINING, LAND AND WATER Anchorage, Alaska	
ALASKA STATE LAND SURVEY NO. 2003-II WITHIN UNSURVEYED Sections 2, 3, 4, 8, 9, 10 and 15 T. 21 N., R. 14 W., SEWARD MERIDIAN, ALASKA Anchorage Recording District	
DRAWN BY: JEM DATE: 3/04/2004 SCALE: 1" = 200'	APPROVAL RECOMMENDED <i>Small Jennings</i> 5/26/05 STATEWIDE FLATTING SUPERVISOR CHECKED BY: KJL FILE NO.: ASLS 20030011

(A) Set an alum. post, 28 ins. long, 2 1/2 ins. diam., 26 ins. in the ground, with alum. cap, 3 1/4 ins. diam., mkd. as shown.

From which
 A spruce, 8 ins. diam., bears N. 75 1/2° E., 12.7 ft. dist., mkd. X BT.
 A spruce, 11 ins. diam., bears S. 62° W., 19.5 ft., dist., mkd. X BT.
 A spruce, 9 ins. diam., bears S. 16 3/4° W., 48.9 ft., dist., mkd. X BT.

Place a DEEP-I magnet at the base of the alum. post and an orange Carsonite witness post 1 ft. North of the corner.

(B) Set an alum. post, 28 ins. long, 2 1/2 ins. diam., 27 ins. in the ground, with alum. cap, 3 1/4 ins. diam., mkd. as shown.

From which
 A birch, 14 ins. diam., bears N. 16° E., 65.3 ft. dist., mkd. X BT.
 A spruce, 8 ins. diam., bears S. 84 3/4° E., 49.3 ft., dist., mkd. X BT.
 A birch, 9 ins. diam., bears S. 5 1/2° W., 28.3 ft., dist., mkd. X BT.

Place a DEEP-I magnet at the base of the alum. post and an orange Carsonite witness post 1 ft. North of the corner.

(C) Set an alum. post, 28 ins. long, 2 1/2 ins. diam., 26 ins. in the ground, with alum. cap, 3 1/4 ins. diam., mkd. as shown.

From which
 A spruce, 7 ins. diam., bears S. 15° E., 32.6 ft. dist., mkd. X BT.
 A spruce, 6 ins. diam., bears S. 32 1/2° W., 48.2 ft., dist., mkd. X BT.
 A spruce, 13 ins. diam., bears S. 84 1/2° W., 42.6 ft., dist., mkd. X BT.

Place a DEEP-I magnet at the base of the alum. post and an orange Carsonite witness post 1 ft. North of the corner.

(D) Set an alum. post, 28 ins. long, 2 1/2 ins. diam., 26 ins. in the ground, with alum. cap, 3 1/4 ins. diam., mkd. as shown.

From which
 A spruce, 7 ins. diam., bears N. 69 3/4° E., 21.1 ft. dist., mkd. X BT.
 A spruce, 15 ins. diam., bears S. 67 1/4° E., 37.3 ft. dist., mkd. X BT.
 A spruce, 9 ins. diam., bears N. 6° W., 17.2 ft., dist., mkd. X BT.

Place a DEEP-I magnet at the base of the alum. post and an orange Carsonite witness post 1 ft. North of the corner.

(E) Set an alum. post, 28 ins. long, 2 1/2 ins. diam., 26 ins. in the ground, with alum. cap, 3 1/4 ins. diam., mkd. as shown.

From which
 A spruce, 7 ins. diam., bears N. 58 3/4° E., 33.9 ft. dist., mkd. X BT.
 A spruce, 9 ins. diam., bears S. 56 3/4° E., 29.7 ft., dist., mkd. X BT.
 A spruce, 13 ins. diam., bears S. 12 1/4° W., 44.3 ft., dist., mkd. X BT.

Place a DEEP-I magnet at the base of the alum. post and an orange Carsonite witness post 1 ft. North of the corner.

(F) Set an alum. post, 28 ins. long, 2 1/2 ins. diam., 27 ins. in the ground, with alum. cap, 3 1/4 ins. diam., mkd. as shown.

From which
 A spruce, 23 ins. diam., bears S. 76° W., 46.3 ft. dist., mkd. X BT.
 A spruce, 11 ins. diam., bears N. 48° W., 49.9 ft., dist., mkd. X BT.
 A spruce, 7 ins. diam., bears N. 10 1/4° W., 30.0 ft., dist., mkd. X BT.

Place a DEEP-I magnet at the base of the alum. post and an orange Carsonite witness post 1 ft. North of the corner.

(G) Set an alum. post, 28 ins. long, 2 1/2 ins. diam., 27 ins. in the ground, with alum. cap, 3 1/4 ins. diam., mkd. as shown.

From which
 A spruce, 12 ins. diam., bears N. 15 1/2° E., 41.9 ft. dist., mkd. X BT.
 A spruce, 15 ins. diam., bears N. 58 3/4° E., 60.9 ft., dist., mkd. X BT.
 A spruce, 17 ins. diam., bears N. 56° W., 14.4 ft., dist., mkd. X BT.

Place a DEEP-I magnet at the base of the alum. post and an orange Carsonite witness post 1 ft. North of the corner.

(H) Recovered on alum. post, 2 1/2 ins. diam., firmly set projecting 6 ins. above the ground, with alum. cap, 2 1/2 ins. diam., mkd. as shown.

From which original bearing trees
 A spruce, 10 ins. diam., bears S. 65° 30' E., 12.8 ft. dist.
 A spruce, 14 ins. diam., bears S. 59° 00' W., 26.3 ft., dist.
 A spruce, 8 ins. diam., bears N. 10° 00' W., 28.8 ft., dist.

(I) Recovered on alum. post, 2 1/2 ins. diam., firmly set projecting 6 ins. above the ground, with alum. cap, 2 1/2 ins. diam., mkd. as shown.

From which original bearing trees
 A spruce, 7 ins. diam., bears N. 69° 30' E., 18.1 ft. dist.
 A spruce, 10 ins. diam., bears S. 33° 30' E., 8.05 ft., dist.
 A spruce, 9 ins. diam., bears N. 44° 30' W., 10.45 ft., dist.

(J) Set an alum. post, 28 ins. long, 2 1/2 ins. diam., 27 ins. in the ground, with alum. cap, 3 1/4 ins. diam., mkd. as shown.

From which
 A spruce, 10 ins. diam., bears S. 75 1/2° E., 19.3 ft. dist., mkd. X BT.
 A spruce, 7 ins. diam., bears S. 36 1/2° W., 54.2 ft., dist., mkd. X BT.
 A spruce, 8 ins. diam., bears N. 35 1/2° W., 39.6 ft., dist., mkd. X BT.

Place a DEEP-I magnet at the base of the alum. post and an orange Carsonite witness post 1 ft. North of the corner.

(K) Set an alum. post, 28 ins. long, 2 1/2 ins. diam., 27 ins. in the ground, with alum. cap, 3 1/4 ins. diam., mkd. as shown.

From which
 A spruce, 7 ins. diam., bears N. 30° E., 36.6 ft. dist., mkd. X BT.
 A spruce, 13 ins. diam., bears S. 68 1/4° E., 32.1 ft., dist., mkd. X BT.
 A spruce, 11 ins. diam., bears S. 19° W., 30.0 ft., dist., mkd. X BT.

Place a DEEP-I magnet at the base of the alum. post and an orange Carsonite witness post 1 ft. North of the corner.

(L) Set an alum. post, 28 ins. long, 2 1/2 ins. diam., 26 ins. in the ground, with alum. cap, 3 1/4 ins. diam., mkd. as shown.

From which
 A spruce, 10 ins. diam., bears S. 61° E., 13.6 ft., dist., mkd. X BT.
 A spruce, 9 ins. diam., bears S. 8 3/4° E., 29.5 ft. dist., mkd. X BT.
 A spruce, 7 ins. diam., bears S. 45° W., 22.2 ft., dist., mkd. X BT.

Place a DEEP-I magnet at the base of the alum. post and an orange Carsonite witness post 1 ft. North of the corner.

(M) Set an alum. post, 28 ins. long, 2 1/2 ins. diam., 25 ins. in the ground, with alum. cap, 3 1/4 ins. diam., mkd. as shown.

From which
 A spruce, 12 ins. diam., bears S. 69° E., 24.1 ft. dist., mkd. X BT.
 A spruce, 9 ins. diam., bears S. 73 1/2° W., 46.1 ft., dist., mkd. X BT.
 A spruce, 8 ins. diam., bears N. 16 1/2° W., 31.3 ft., dist., mkd. X BT.

Place a DEEP-I magnet at the base of the alum. post and an orange Carsonite witness post 1 ft. North of the corner.

(N) Recovered on iron post, firmly set, projecting 3" above the ground with a brass cap, 3 1/4 ins. diam., mkd. as shown.

From which original bearing trees
 A spruce, 14 ins. diam., bears N. 22 1/4° E., 66.6 ft. dist., with scribe marks 1/16 S33 BT visible on an open blaze.
 A birch, 12 ins. diam., bears N. 78 1/4° E., 72.7 ft., dist., with healed blaze.
 A birch, 12 ins. diam., bears S. 8 1/4° W., 96.2 ft., dist., with healed blaze.

APPLICANT CERTIFICATE

I, THE UNDERSIGNED, HEREBY CERTIFY THAT I AM THE APPLICANT OF TRACT E, ASLS 2003-II, ADL 228585 AS SHOWN HEREON. I HEREBY APPROVE THIS SURVEY AND PLAT.

DATE: March 25 2005
James D Love
 JAMES D. LOVE
 8280 E. 20th Ave.
 ANCHORAGE, ALASKA 99504

NOTARY'S ACKNOWLEDGEMENT

SUBSCRIBED AND SWORN TO BEFORE ME THIS 25 DAY OF MARCH, 2005

BY JAMES D. LOVE

James D Love
 NOTARY FOR THE STATE OF ALASKA
 MY COMMISSION EXPIRES 1-9-09

NOTE: There is no applicant for Tract K

APPLICANT CERTIFICATE

I, THE UNDERSIGNED, HEREBY CERTIFY THAT I AM THE APPLICANT OF TRACT F, ASLS 2003-II, ADL 228433 AS SHOWN HEREON. I HEREBY APPROVE THIS SURVEY AND PLAT.

DATE: 5/23/05
Barbara A. Norris
 BARBARA A. NORRIS
 2610 KLAMATH DRIVE,
 ANCHORAGE, ALASKA 99517

NOTARY'S ACKNOWLEDGEMENT

SUBSCRIBED AND SWORN TO BEFORE ME THIS 23 DAY OF May, 2004

BY Brook K Stella

Brook K Stella
 NOTARY FOR THE STATE OF ALASKA
 MY COMMISSION EXPIRES _____

OFFICIAL SEAL
 State of Alaska
 NOTARY PUBLIC
 BROOK K. STELLA
 My Commission Expires Nov. 14, 2008

APPLICANT CERTIFICATE

I, THE UNDERSIGNED, HEREBY CERTIFY THAT I AM THE APPLICANT OF TRACT G, ASLS 2003-II, ADL 228583 AS SHOWN HEREON. I HEREBY APPROVE THIS SURVEY AND PLAT.

DATE: 2-18-05
James D Love
 ROY A. ROTH
 P.O. BOX 4103
 PALMER, ALASKA 99645

NOTARY'S ACKNOWLEDGEMENT

SUBSCRIBED AND SWORN TO BEFORE ME THIS 18th DAY OF February, 2005

BY Roy A. Roth

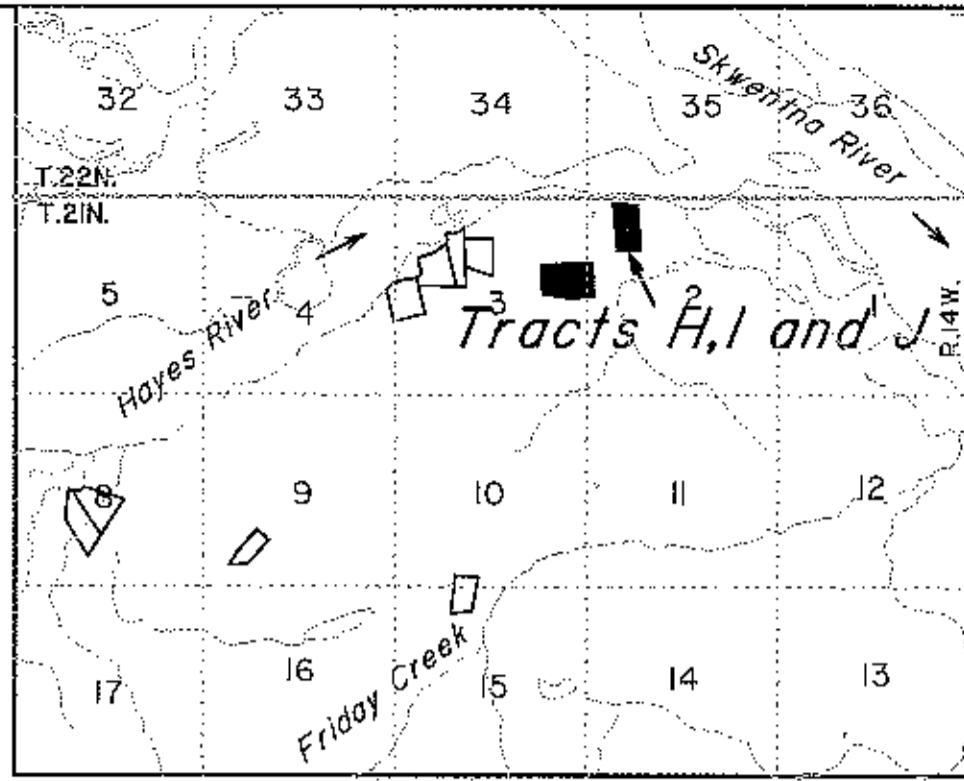
Jessica R. Schalkowski
 NOTARY FOR THE STATE OF ALASKA
 MY COMMISSION EXPIRES June 27, 2007



DATE OF SURVEY: BEGINNING: 09/23/2003 ENDING: 10/03/2003	NAME OF SURVEYOR: The Crazy Mountains JV 2000 E. Dawling Road, #6 Anchorage, AK 99507
STATE OF ALASKA DEPARTMENT OF NATURAL RESOURCES DIVISION OF MINING, LAND AND WATER Anchorage, Alaska	
ALASKA STATE LAND SURVEY NO. 2003-II	
WITHIN UNSURVEYED Sections 2, 3, 4, 8, 9, 10 and 15 T. 21 N., R. 14 W., SEWARD MERIDIAN, ALASKA Anchorage Recording District	
DRAWN BY: JEM DATE: 3/04/2004	APPROVAL RECOMMENDED <u>Brook K Stella</u> 5/26/05 STATEWIDE PLATTING SUPERVISOR DATE
SCALE: 1" = 200'	CHECKED BY: KJL File No. ASLS 200300II

E 1/16 of Secs. 4 and 33
 Lat. 61° 56' 48.023" N.
 Long. 151° 50' 29.441" W.
 NAD 27

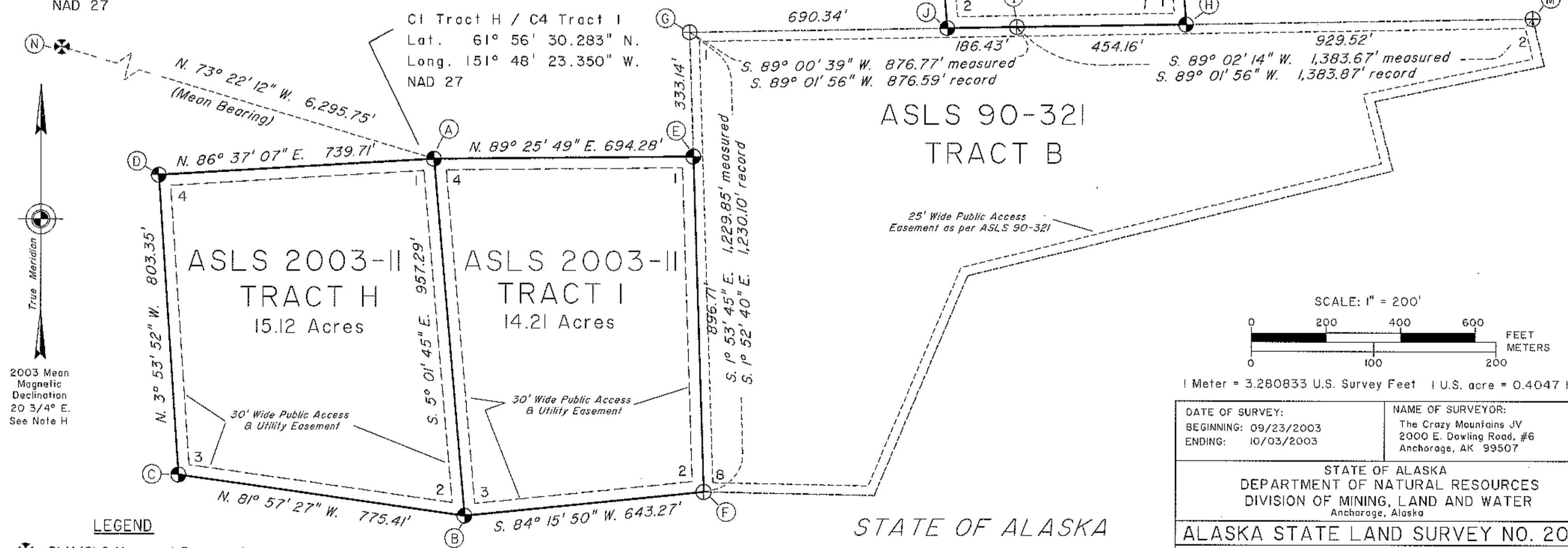
STATE OF ALASKA



U.S.G.S. I-63,360 Tyonek D-5 & D-6, 1954 SCALE 1" = 1 Mile

VICINITY MAP

STATE OF ALASKA



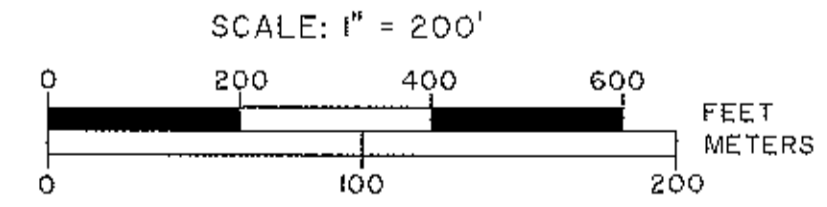
LEGEND

- ⊗ BLM/GLO Monument Recovered
- ⊕ Primary monument set this survey
- ⊕ Primary monument recovered this survey
- Ⓐ Corner Designation
- Surveyed Line
- - - Unsurveyed Line
- - - Existing Surveyed Boundary

SEE SHEET 8 FOR MONUMENT DESCRIPTIONS

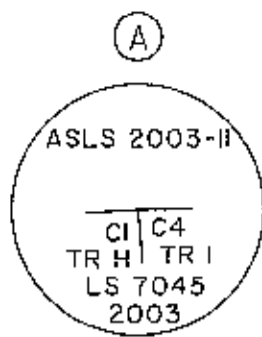
SHEET 7 of 8

Anchorage Recording District 2005-87



1 Meter = 3.280833 U.S. Survey Feet 1 U.S. acre = 0.4047 hectare

DATE OF SURVEY: BEGINNING: 09/23/2003 ENDING: 10/03/2003	NAME OF SURVEYOR: The Crazy Mountians JV 2000 E. Dowling Road, #6 Anchorage, AK 99507
STATE OF ALASKA DEPARTMENT OF NATURAL RESOURCES DIVISION OF MINING, LAND AND WATER Anchorage, Alaska	
ALASKA STATE LAND SURVEY NO. 2003-II	
WITHIN UNSURVEYED Sections 2, 3, 4, 8, 9, 10 and 15 T. 21 N., R. 14 W., SEWARD MERIDIAN, ALASKA Anchorage Recording District	
DRAWN BY: JEM DATE: 3/04/2004	APPROVAL RECOMMENDED <i>[Signature]</i> 5/26/05 STATEWIDE PLATING SUPERVISOR DATE
SCALE: 1" = 200'	CHECKED BY: KJL FILE NO.: ASLS 200300H



A Set an alum. post, 28 ins. long, 2 1/2 ins. diam., 27 ins. in the ground, with alum. cap., 3 1/4 ins. diam., mkd. as shown.

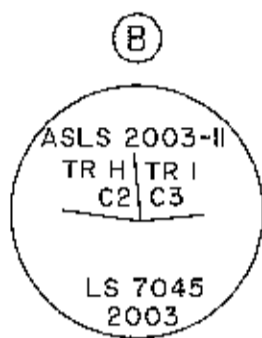
From which

A spruce, 9 ins. diam., bears N. 59 1/2° E., 29.0 ft. dist., mkd. X BT.

A spruce, 7 ins. diam., bears S. 29° E., 43.6 ft., dist., mkd. X BT.

A spruce, 9 ins. diam., bears N. 29° W., 46.5 ft., dist., mkd. X BT.

Place a DEEP-I magnet at the base of the alum. post and an orange Carsonite witness post 1 ft. North of the corner.



B Set an alum. post, 28 ins. long, 2 1/2 ins. diam., 27 ins. in the ground, with alum. cap., 3 1/4 ins. diam., mkd. as shown.

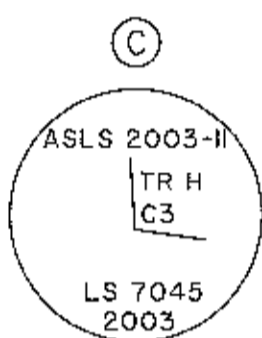
From which

A spruce, 5 ins. diam., bears N. 34 1/4° E., 19.9 ft. dist., mkd. X BT.

A spruce, 6 ins. diam., bears S. 42° E., 26.1 ft., dist., mkd. X BT.

A spruce, 8 ins. diam., bears N. 60° W., 21.8 ft., dist., mkd. X BT.

Place a DEEP-I magnet at the base of the alum. post and an orange Carsonite witness post 1 ft. North of the corner.



C Set an alum. post, 28 ins. long, 2 1/2 ins. diam., 27 ins. in the ground, with alum. cap., 3 1/4 ins. diam., mkd. as shown.

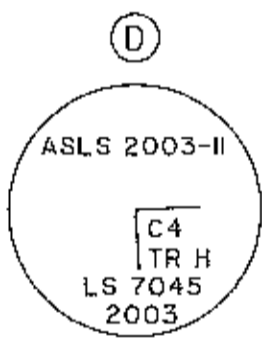
From which

A spruce, 13 ins. diam., bears N. 70° E., 30.6 ft. dist., mkd. X BT.

A spruce, 10 ins. diam., bears S. 19° W., 35.5 ft., dist., mkd. X BT.

A spruce, 8 ins. diam., bears N. 66° W., 31.6 ft., dist., mkd. X BT.

Place a DEEP-I magnet at the base of the alum. post and an orange Carsonite witness post 1 ft. North of the corner.



D Set an alum. post, 28 ins. long, 2 1/2 ins. diam., 26 ins. in the ground, with alum. cap., 3 1/4 ins. diam., mkd. as shown.

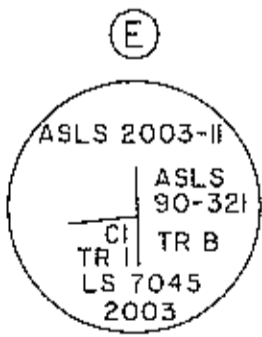
From which

A spruce, 9 ins. diam., bears N. 81° E., 31.0 ft. dist., mkd. X BT.

A spruce, 8 ins. diam., bears S. 32° W., 34.2 ft. dist., mkd. X BT.

A spruce, 8 ins. diam., bears N. 12° W., 27.1 ft., dist., mkd. X BT.

Place a DEEP-I magnet at the base of the alum. post and an orange Carsonite witness post 1 ft. North of the corner.



E Set an alum. post, 28 ins. long, 2 1/2 ins. diam., 27 ins. in the ground, with alum. cap., 3 1/4 ins. diam., mkd. as shown.

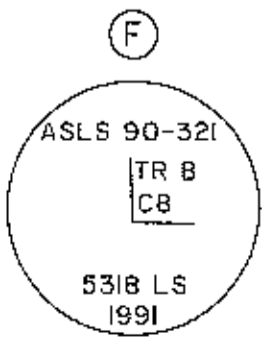
From which

A spruce, 6 ins. diam., bears N. 82 1/2° E., 23.1 ft. dist., mkd. X BT.

A spruce, 10 ins. diam., bears S. 5 3/4° E., 53.4 ft., dist., mkd. X BT.

A spruce, 10 ins. diam., bears N. 16° W., 55.4 ft., dist., mkd. X BT.

Place a DEEP-I magnet at the base of the alum. post and an orange Carsonite witness post 1 ft. North of the corner.



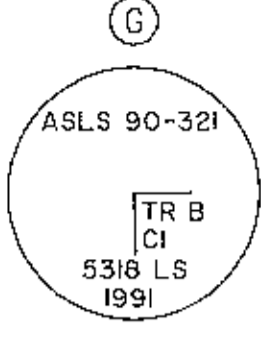
F Recovered an alum. post, 2 1/2 ins. diam., firmly set projecting 8 ins. above the ground, with alum. cap., 2 1/2 ins. diam., mkd. as shown.

From which original bearing trees

A spruce, 8 ins. diam., bears N. 77° 00' E., 12.7 ft. dist.

A spruce, 8 ins. diam., bears S. 24° 30' E., 8.1 ft., dist.

A spruce, 10 ins. diam., bears N. 74° 00' W., 11.2 ft., dist.



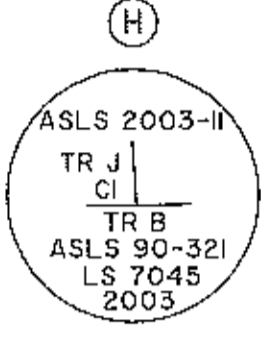
G Recovered an alum. post, 2 1/2 ins. diam., firmly set projecting 5 ins. above the ground, with alum. cap., 2 1/2 ins. diam., mkd. as shown.

From which original bearing trees

A spruce, 10 ins. diam., bears N. 87° 30' E., 14.9 ft. dist.

A birch, 14 ins. diam., bears S. 69° 00' W., 25.3 ft., dist.

A spruce, 10 ins. diam., bears N. 22° 00' W., 20.7 ft., dist.



H Set an alum. post, 28 ins. long, 2 1/2 ins. diam., 27 ins. in the ground, with alum. cap., 3 1/4 ins. diam., mkd. as shown.

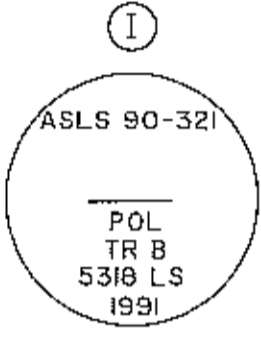
From which

A spruce, 6 ins. diam., bears N. 72 1/2° E., 22.6 ft. dist., mkd. X BT.

A spruce, 5 ins. diam., bears S. 40 1/2° W., 18.1 ft., dist., mkd. X BT.

A spruce, 6 ins. diam., bears N. 12 3/4° W., 38.9 ft., dist., mkd. X BT.

Place a DEEP-I magnet at the base of the alum. post and an orange Carsonite witness post 1 ft. North of the corner.



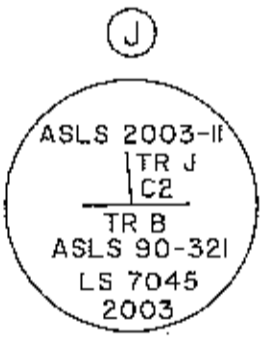
I Recovered an alum. post, 2 1/2 ins. diam., firmly set projecting 4 ins. above the ground, with alum. cap., 2 1/2 ins. diam., mkd. as shown.

From which original bearing trees

A birch, 12 ins. diam., bears S. 66° 00' E., 12.7 ft. dist., (record 8.9 ft.)

A birch, 12 ins. diam., bears S. 71° 00' W., 27.2 ft., dist.

A spruce, 8 ins. diam., bears N. 6° 00' W., 8.9 ft., dist., (record 12.7)



J Set an alum. post, 28 ins. long, 2 1/2 ins. diam., 26 ins. in the ground, with alum. cap., 3 1/4 ins. diam., mkd. as shown.

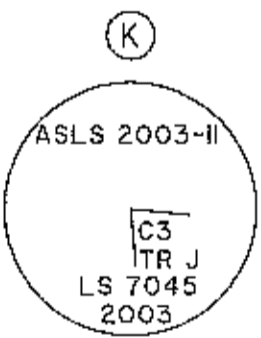
From which

A spruce, 12 ins. diam., bears N. 68 1/4° E., 15.5 ft. dist., mkd. X BT.

A spruce, 12 ins. diam., bears S. 32 1/4° E., 25.8 ft. dist., mkd. X BT.

A spruce, 10 ins. diam., bears S. 47 3/4° W., 21.4 ft., dist., mkd. X BT.

Place a DEEP-I magnet at the base of the alum. post and an orange Carsonite witness post 1 ft. North of the corner.



K Set an alum. post, 28 ins. long, 2 1/2 ins. diam., 26 ins. in the ground, with alum. cap., 3 1/4 ins. diam., mkd. as shown.

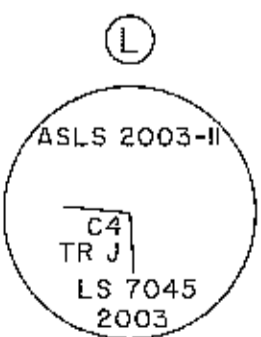
From which

A spruce, 15 ins. diam., bears S. 31 3/4° E., 19.6 ft. dist., mkd. X BT.

A spruce, 14 ins. diam., bears S. 40 1/4° W., 24.3 ft., dist., mkd. X BT.

A spruce, 13 ins. diam., bears N. 11 1/2° W., 51.2 ft., dist., mkd. X BT.

Place a DEEP-I magnet at the base of the alum. post and an orange Carsonite witness post 1 ft. North of the corner.



L Set an alum. post, 28 ins. long, 2 1/2 ins. diam., 28 ins. in the ground, with alum. cap., 3 1/4 ins. diam., mkd. as shown.

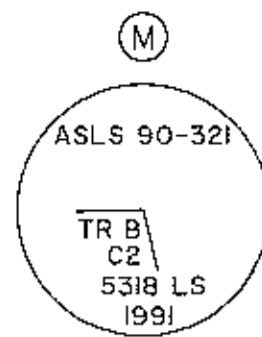
From which

A birch, 13 ins. diam., bears S. 63° E., 27.1 ft. dist., mkd. X BT.

A birch, 9 ins. diam., bears S. 25 1/2° W., 31.0 ft., dist., mkd. X BT.

A birch, 7 ins. diam., bears N. 62 1/4° W., 20.7 ft., dist., mkd. X BT.

Place a DEEP-I magnet at the base of the alum. post and an orange Carsonite witness post 1 ft. North of the corner.



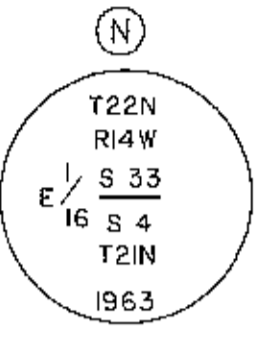
M Recovered an alum. post, 2 1/2 ins. diam., loosely set projecting 8 ins. above the ground, now firmly set projecting 4 ins. above the ground with alum. cap., 2 1/2 ins. diam., mkd. as shown.

From which original bearing trees

A spruce, 10 ins. diam., bears N. 53° 00' E., 27.1 ft. dist.

A spruce, 12 ins. diam., bears S. 40° 00' E., 18.7 ft., dist.

A birch, 12 ins. diam., bears N. 20° 00' W., 19.0 ft., dist.



N Recovered an iron post, firmly set, projecting 3" above the ground with a brass cap., 3 1/4 ins. diam., mkd. as shown.

From which original bearing trees

A spruce, 14 ins. diam., bears N. 22 1/4° E., 66.6 ft. dist., with scribe marks 1/16 S33 BT visible on an open blaze.

A birch, 12 ins. diam., bears N. 78 1/4° E., 72.7 ft., dist., with healed blaze.

A birch, 12 ins. diam., bears S. 8 1/4° W., 96.2 ft., dist., with healed blaze.

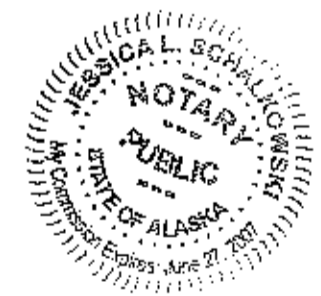
APPLICANT CERTIFICATE

I, THE UNDERSIGNED, HEREBY CERTIFY THAT I AM THE APPLICANT OF TRACT H, ASLS 2003-II, ADL 228396 AS SHOWN HEREON. I HEREBY APPROVE THIS SURVEY AND PLAT.

DATE: 04/22/05
Thomas P. Payton by Dianne Payton P.O.A.
 THOMAS P. PAYTON
 P.O. BOX 1
 SKWENTNA, ALASKA 99667

NOTARY'S ACKNOWLEDGEMENT
 SUBSCRIBED AND SWORN TO BEFORE ME THIS 22nd DAY OF April, 2005
 BY Dianne Payton P.O.A., for Thomas Payton

Jessica L. Schalkowski
 NOTARY FOR THE STATE OF ALASKA
 MY COMMISSION EXPIRES June 27, 2007



2005-87 n/c
 Anchorage REC DIST
 Date 7-14 2005
 Time 9:42 A.M.
 Requested By Met. Su
 Address Germantown
SOA/DNR/DMLW

APPLICANT CERTIFICATE

I, THE UNDERSIGNED, HEREBY CERTIFY THAT I AM THE APPLICANT OF TRACT I, ASLS 2003-II, ADL 228397 AS SHOWN HEREON. I HEREBY APPROVE THIS SURVEY AND PLAT.

DATE: 04/22/05
Dianne D. Payton
 DIANNE D. PAYTON
 P.O. BOX 1
 SKWENTNA, ALASKA 99667

NOTARY'S ACKNOWLEDGEMENT
 SUBSCRIBED AND SWORN TO BEFORE ME THIS 22nd DAY OF April, 2005
 BY Dianne D. Payton

Jessica L. Schalkowski
 NOTARY FOR THE STATE OF ALASKA
 MY COMMISSION EXPIRES June 27, 2007



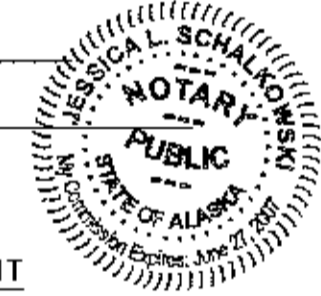
APPLICANT CERTIFICATE

I, THE UNDERSIGNED, HEREBY CERTIFY THAT I AM THE APPLICANT OF TRACT J, ASLS 2003-II, ADL 228395 AS SHOWN HEREON. I HEREBY APPROVE THIS SURVEY AND PLAT.

DATE: 02-11-05
Israel Payton
 ISRAEL P. PAYTON
 P.O. BOX 1
 SKWENTNA, ALASKA 99667

NOTARY'S ACKNOWLEDGEMENT
 SUBSCRIBED AND SWORN TO BEFORE ME THIS 11th DAY OF February, 2005
 BY Israel Payton

Jessica L. Schalkowski
 NOTARY FOR THE STATE OF ALASKA
 MY COMMISSION EXPIRES June 27, 2007



DATE OF SURVEY: BEGINNING: 09/23/2003 ENDING: 10/03/2003	NAME OF SURVEYOR: The Crazy Mountains JV 2000 E. Dowling Road, #6 Anchorage, AK 99507
STATE OF ALASKA DEPARTMENT OF NATURAL RESOURCES DIVISION OF MINING, LAND AND WATER Anchorage, Alaska	
ALASKA STATE LAND SURVEY NO. 2003-II	
WITHIN UNSURVEYED Sections 2, 3, 4, 8, 9, 10 and 15 T. 21 N., R. 14 W., SEWARD MERIDIAN, ALASKA Anchorage Recording District	
DRAWN BY: JEM	APPROVAL RECOMMENDED <u>Shelby Jennings</u> <u>9/26/05</u>
DATE: 3/04/2004	STATEWIDE PLATTING SUPERVISOR DATE
SCALE: 1" = 200'	CHECKED BY: KJL File No. ASLS 200300II