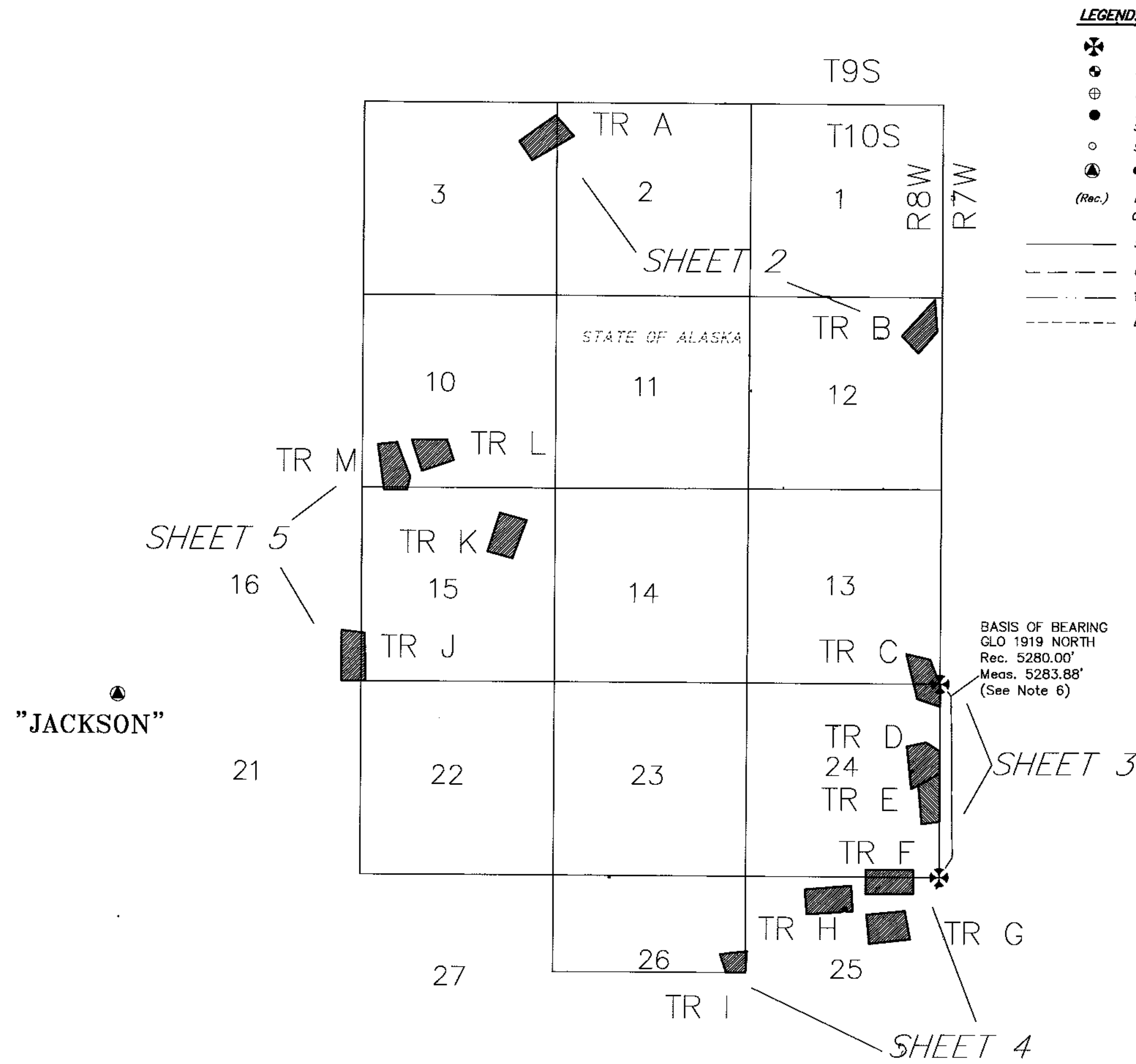
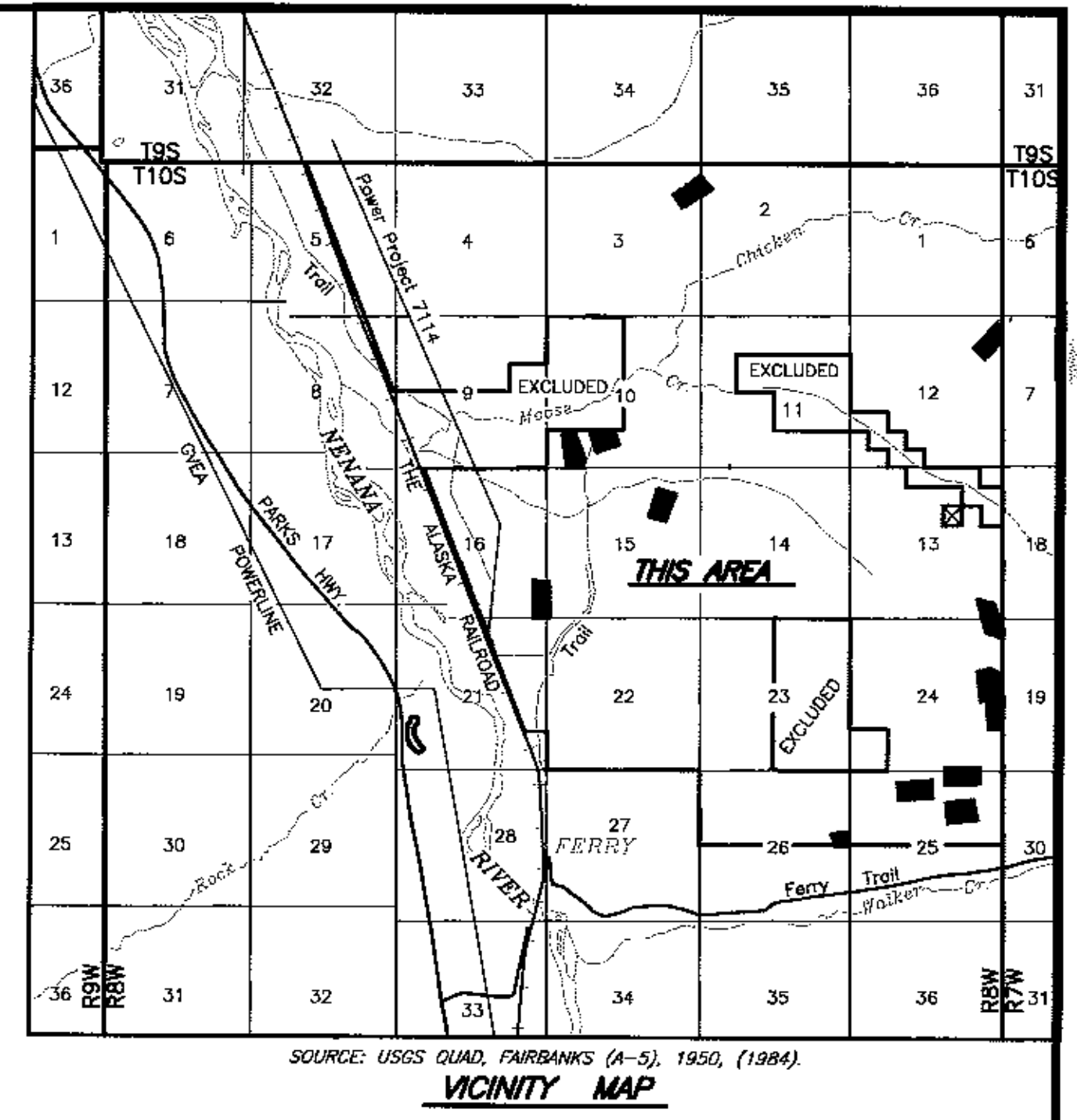
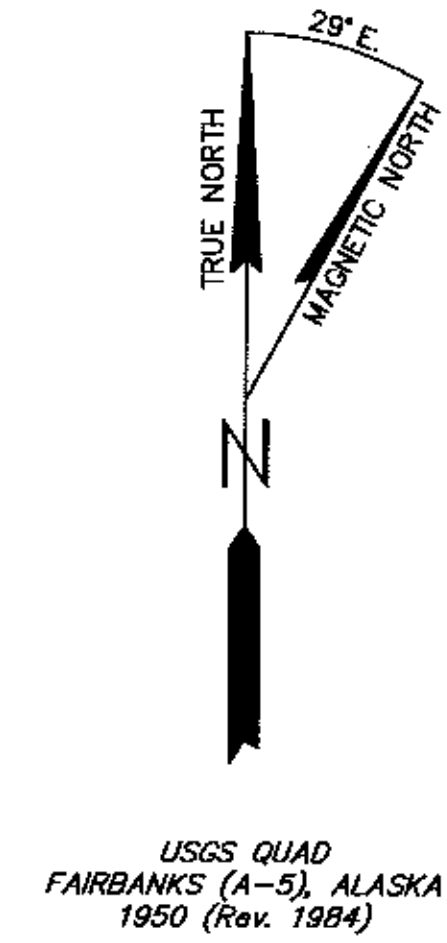


# WINDY CREEK REMOTE RECREATIONAL CABIN SITES



- LEGEND:**
- ⊕ GLO-BLM MONUMENT RECOVERED.
  - ⊙ PRIMARY MONUMENT SET THIS SURVEY.
  - ⊕ PRIMARY MONUMENT RECOVERED.
  - SECONDARY MONUMENT SET THIS SURVEY. SET 2" ALUM. CAP ON 5/8" REBAR, 4469-S, 2002.
  - SECONDARY MONUMENT RECOVERED.
  - ⊙ METEODIC CONTROL MONUMENT RECOVERED.
  - (Rec.) RECORD BEARINGS & DISTANCES ARE GENERAL LAND OFFICE UNLESS OTHERWISE NOTED
  - SURVEYED LINE
  - - - UNSURVEYED LINE
  - - - VACATED SECTION LINE
  - - - EASEMENT LINE, SEE INDIVIDUAL LABELS

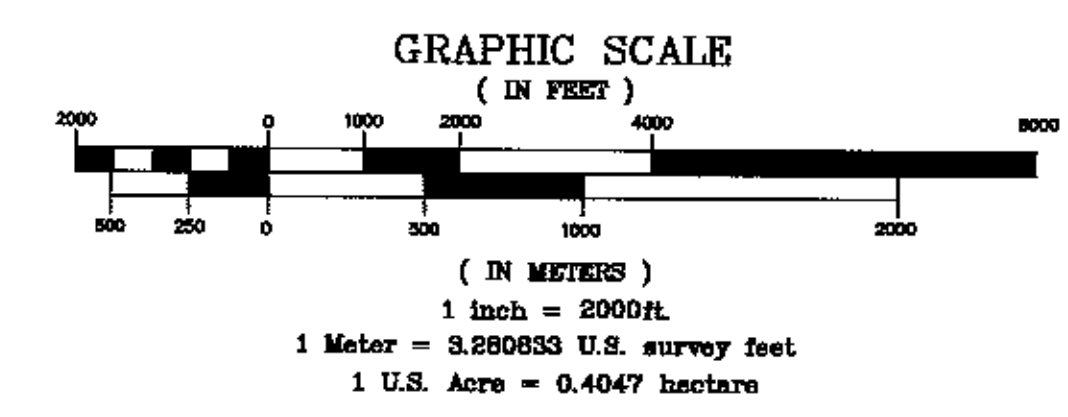


- NOTES:**
- This survey was accomplished in accordance with AS 38.05.600, GSC 649 and GSI 2002-4.
  - All bearings are true bearings as oriented to the Basis of Bearing and distances shown are reduced to horizontal field distances. Monuments were set with high precision differentially corrected Real Time Kinematic GPS methods using Tripod Data Systems GPS Survey Pro version 3.2 and confirmed with high precision differentially corrected static observations using Javad Legacy and Legacy-E receivers, with data processed by GeoGenius 2000 software.
  - The accuracy of this survey is greater than 1:5000.
  - All parcels of land owned by the State of Alaska, located within 50.00 feet of, or bisected by a surveyed or protracted section line, are subject to a 50 foot (50') easement, each side of the section line, which is reserved to the State of Alaska for public highways under AS 19.10.010.
  - The basis for Geographic Position is the Alaska DOT&PF monument "Jackson", with Lat. 64°02'19.88206", Long. 149°09'13.58186" NAD 27, (64°02'18.21131", Long. 149°09'21.98550", NAD 83, 1992 adjustment), and carried to this survey by unconstrained static GPS measurements.
  - A local coordinate system was adopted by taking State Plane Zone 4, NAD 83 (feet) coordinates, rotating and scaling points around the southeast corner of Section 24. That point is the only point where the local coordinate equals the state plane coordinate. The rotation was clockwise 0°55'03" from the state plane bearing to the record BLM North bearing between the southeast corner of Section 24 and the northeast corner of Section 24. (Corpscom reports a convergence angle of +0°53'04"). A combined scale factor from grid to ground 1.0001587 was used. These coordinates were not constrained to the National Spatial Reference System (NSRS) by using a CORS station.

Geographic Positions for Corner 1 for each Tract, Values are NAD 27

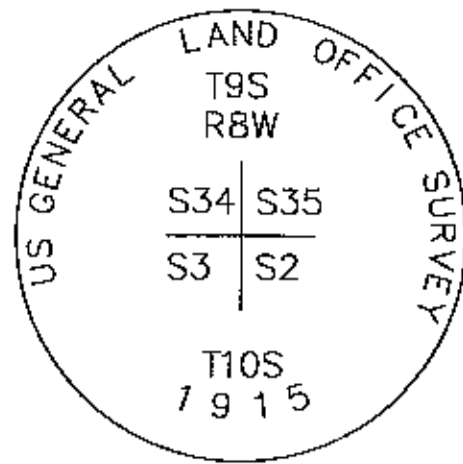
TR A	64°04'56.334"	149°04'47.722"
TR B	64°04'07.328"	149°00'53.890"
TR C	64°02'19.843"	149°01'03.139"
TR D	64°02'05.794"	149°00'49.208"
TR E	64°01'59.779"	149°00'49.214"
TR F	64°01'33.786"	149°01'05.088"
TR G	64°01'22.833"	149°01'10.162"
TR H	64°01'28.483"	149°02'11.406"
TR I	64°01'11.749"	149°02'46.585"
TR J	64°02'23.892"	149°06'56.646"
TR K	64°03'09.184"	149°05'20.142"
TR L	64°03'20.384"	149°06'08.225"
TR M	64°03'15.198"	149°16'17.425"

BASIS OF BEARING  
GLO 1919 NORTH  
Rec. 5280.00'  
Meas. 5283.88'  
(See Note 6)



DATE OF SURVEY: BEGINNING June 5, 2002 ENDING Oct. 5, 2002	NAME OF SURVEYOR: Mullikin Surveys P.O. Box 790 Homer, AK 99603-0790
STATE OF ALASKA DEPARTMENT OF NATURAL RESOURCES, DIVISION OF MINING, LAND, AND WATER ANCHORAGE, ALASKA	
ALASKA STATE LAND SURVEY 2002-4	
WITHIN SURVEYED SECTIONS 2, 3, 10, 12, 13, 15, 16, 24, 25, 26 T.10S., R.8W., FM, ALASKA Nenana Recording District	
DRAWN BY: TLM DATE: 1/03/03	APPROVAL RECOMMENDED: <i>[Signature]</i> June 17, 2004 STATEWIDE PLANNING SUPERVISOR, DATE
SCALE: 1"=2000'	CHECKED FILE NO: DEM ASLS 20020004

Nenana 2004-6



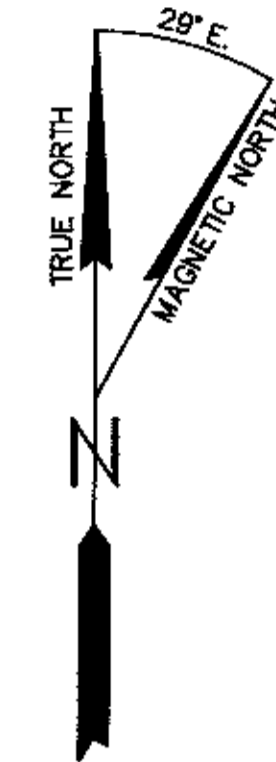
Found B.C. on iron post leaning to west. Reset post at plumb position, 8" above ground. Pits present in each section.

**LEGEND:**

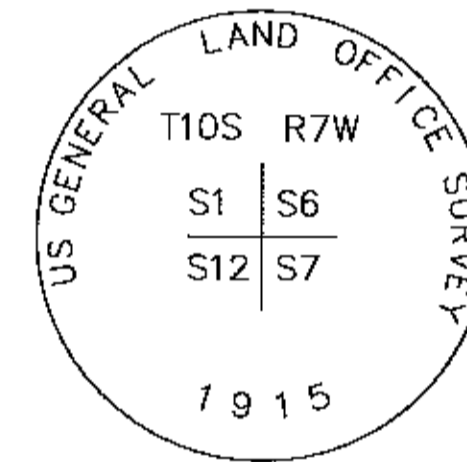
- ⊕ CLO-BLM MONUMENT RECOVERED.
- ⊙ PRIMARY MONUMENT SET THIS SURVEY.
- ⊕ PRIMARY MONUMENT RECOVERED.
- SECONDARY MONUMENT SET THIS SURVEY. SET 2" ALUM. CAP ON 5/8" REBAR, 4469-S, 2002.
- SECONDARY MONUMENT RECOVERED.
- ⊙ GEODETIC CONTROL MONUMENT RECOVERED.

(Rec.) RECORD BEARINGS & DISTANCES ARE GENERAL LAND OFFICE UNLESS OTHERWISE NOTED

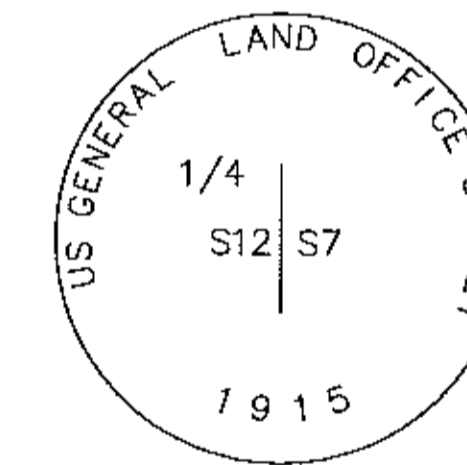
- SURVEYED LINE
- - - UNSURVEYED LINE
- · - VACATED SECTION LINE
- - - EASEMENT LINE, SEE INDIVIDUAL LABELS



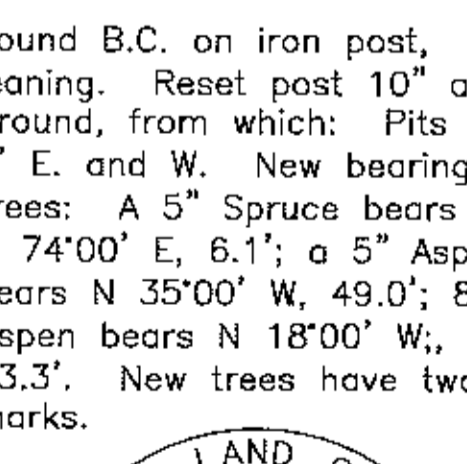
USGS QUAD FAIRBANKS (A-5), ALASKA 1950 (Rev. 1984)



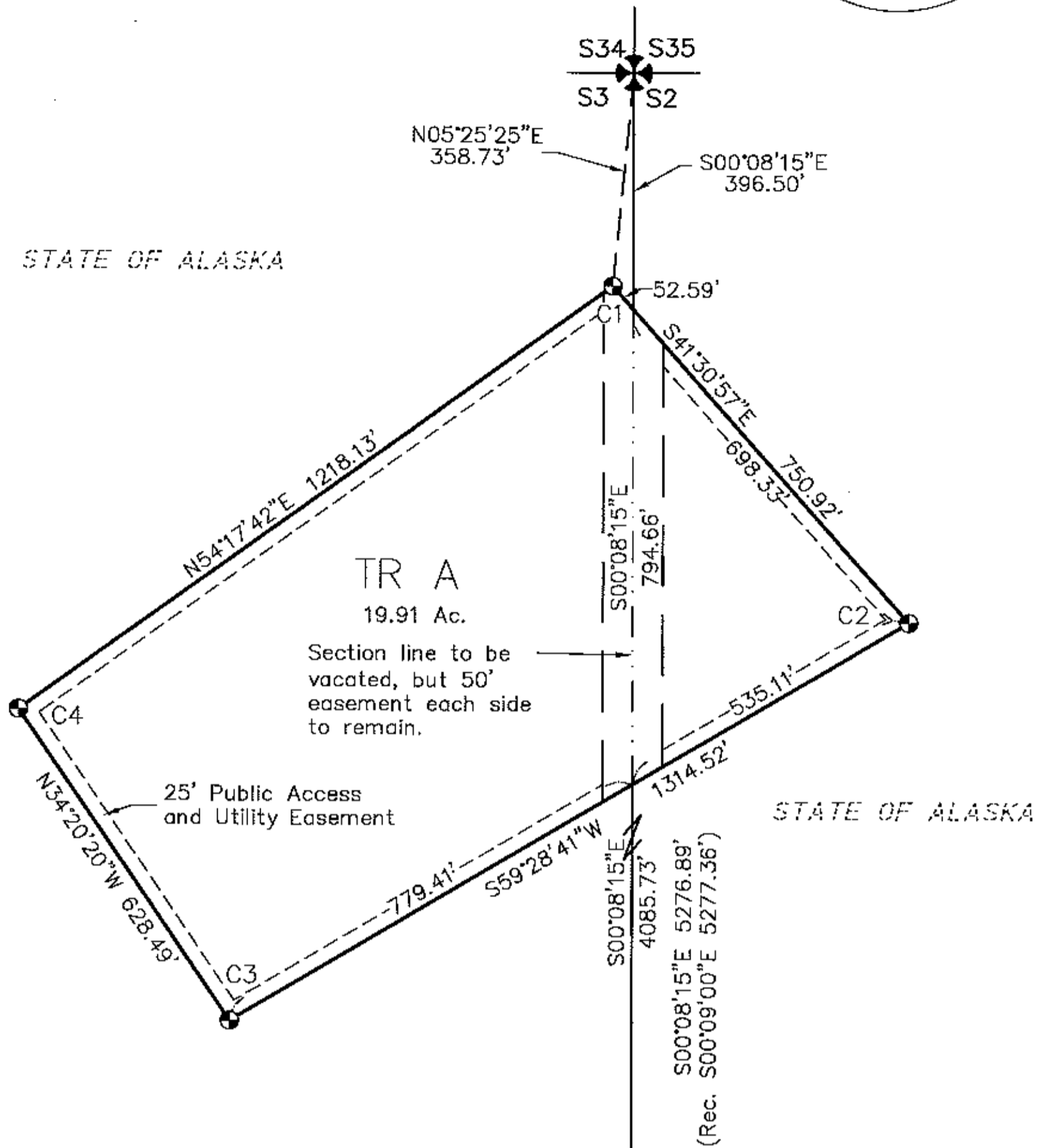
Found B.C. on iron post, good condition, from which:  
A 6" Spruce bears N 73°00' E, 50.1'; a 6" Spruce bears S 23°00' W, 19.7'; a 9" Spruce bears N 31°30' W, 16.4'; pits evident 5' N and S, 2.5' E and W.



Found B.C. on iron post, horizontal below mass. Reset post at base of pipe, 10" above the ground, from which:  
A 4" Spruce bears N 38°00' E, 32.6'; a 6" Spruce bears S 40°30' E, 14.7'; a 4" Spruce bears S 75°00' W, 9.6'. No pits evident.



Found B.C. on iron post, leaning. Reset post 10" above ground, from which: Pits bear 6' E. and W. New bearing trees: A 5" Spruce bears N 74°00' E, 6.1'; a 5" Aspen bears N 35°00' W, 49.0'; 8" Aspen bears N 18°00' W, 43.3'. New trees have two "X" marks.

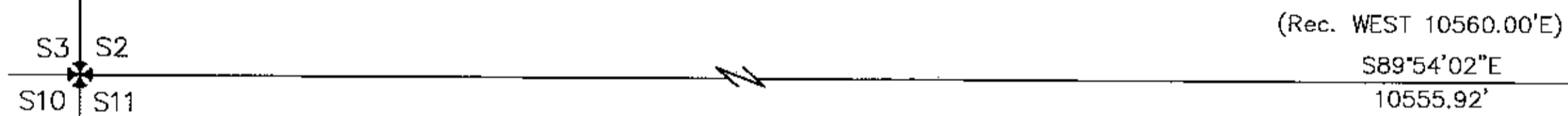


**TRACT-A**

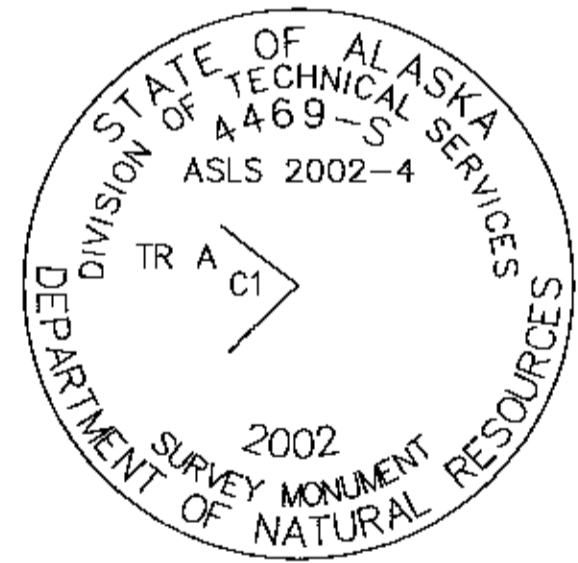
CORNER MONUMENT	DESCRIPTION	TREE	BEARING	DISTANCE
Corner 1	C1 TR A	3" Spruce 2" Spruce 3" Spruce	S 13°30' E S 62°30' W N 83°30' W	85.2' 9.0' 31.0'
Corner 2	TR A C2	4" Spruce 7" Birch 5" Spruce	N 29°00' E S 54°00' W N 37°30' W	10.9' 12.0' 42.1'
Corner 3	TR A C3	7" Spruce 11" Spruce 7" Spruce	S 89°30' W N 10°00' W N 51°30' E	27.8' 14.5' 34.7'
Corner 4	C4 TR A	4" Spruce 4" Spruce 6" Spruce	S 56°30' W N 45°30' W N 02°00' E	66.3' 37.1' 45.3'

**MONUMENT NOTES**

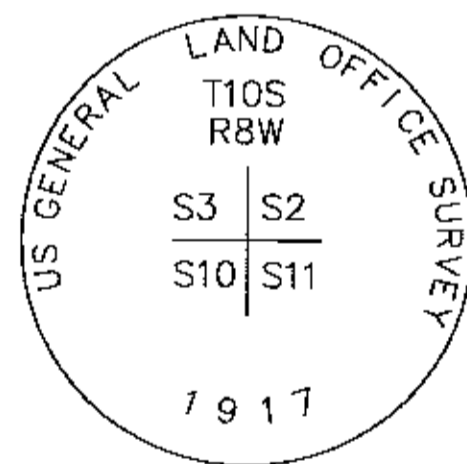
Set primary monument symbol denotes a magnetized 3 1/4" Alum. Cap on 2 1/2" flanged Alum. pipe. Accessory Bearings are shown from monument to center of tree or object. New bearing trees were marked with a scribed "X" on blazes at the root crown and at breast height, and are marked with an aluminum tag. An orange fiberglass Carsonite stake was placed at each monument found or set.



**TYPICAL SET MONUMENT**

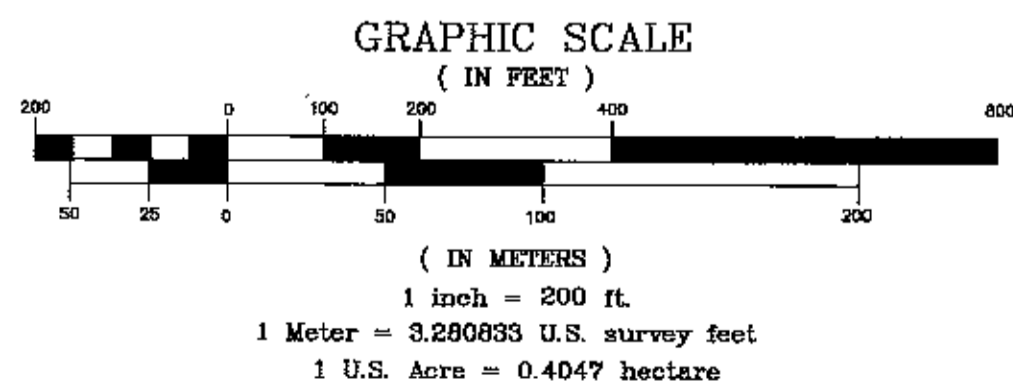
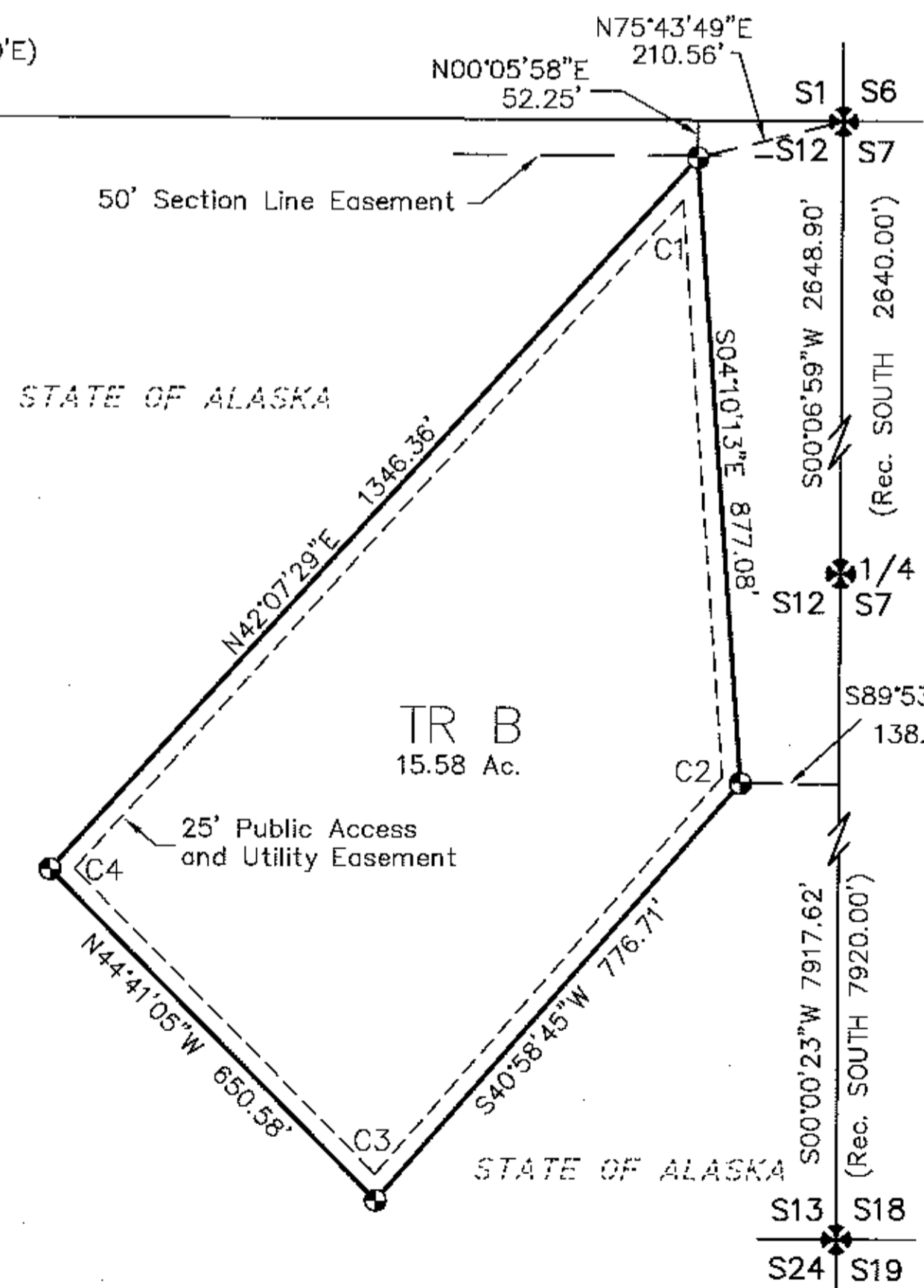


Found B.C. on iron post horizontal under surface. Reset monument at base of found post, 8" above ground. Original BT's not found. Set new BTs:  
8" Birch N 08°30' E, 19.3'  
9" Birch S 60°30' W, 35.3'  
6" Birch N 20°30' W, 23.2'



**TRACT-B**

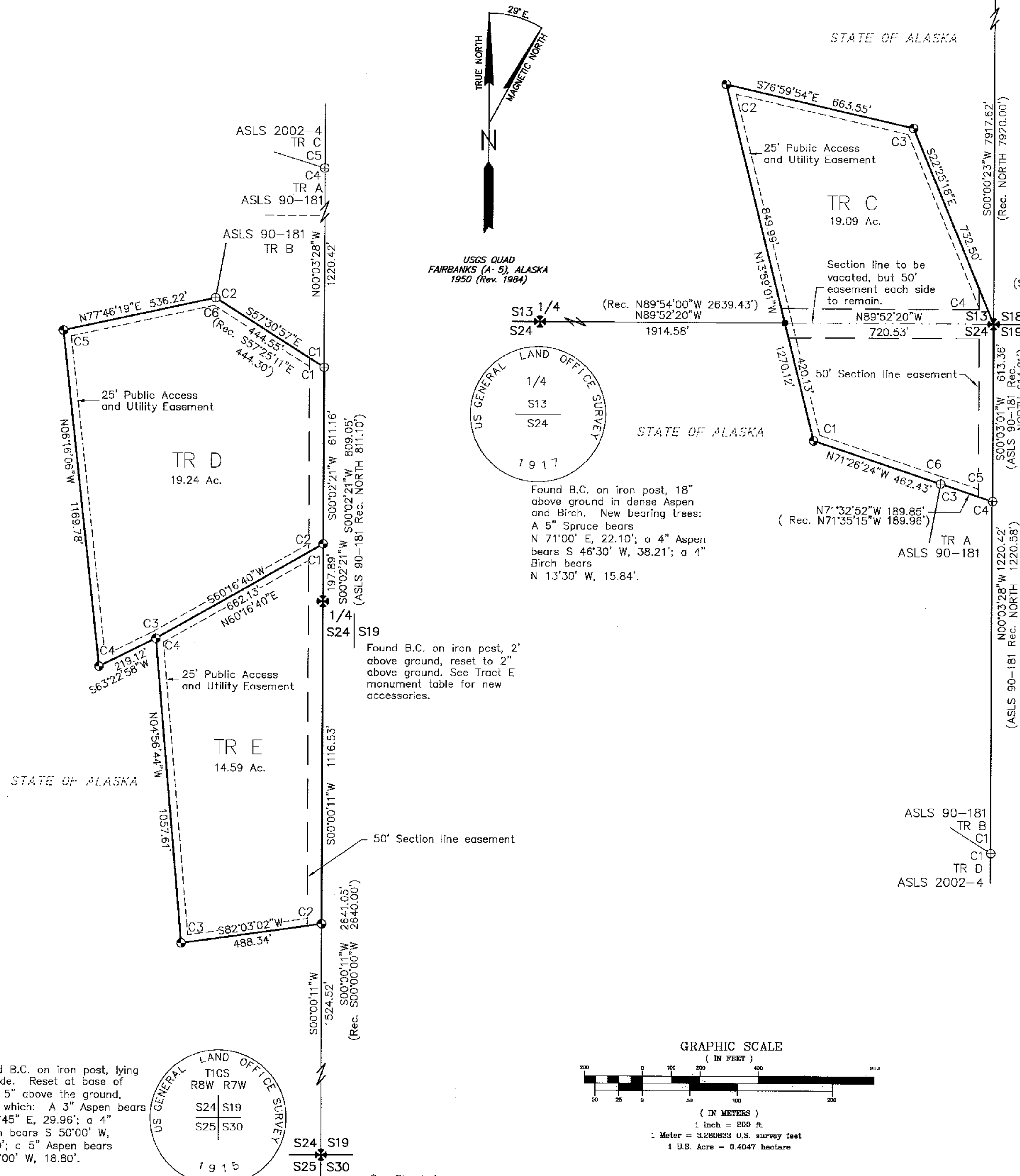
CORNER MONUMENT	DESCRIPTION	TREE	BEARING	DISTANCE
Corner 1	C1 TR B	4" Birch 7" Spruce 5" Birch	S 53°30' E S 35°00' W N 22°30' W	50.0' 34.5' 5.7'
Corner 2	TR B C2	7" Aspen 9" Spruce 4" Aspen	N 28°00' E S 66°00' E N 47°30' W	19.1' 42.8' 20.2'
Corner 3	TR B C3	4" Birch 7" Spruce 5" Spruce	N 43°30' E S 51°00' E N 48°30' W	58.4' 20.9' 55.5'
Corner 4	C4 TR B	4" Spruce 6" Spruce 6" Spruce	N 47°30' E S 52°00' E N 63°30' W	52.8' 60.0' 51.1'



DATE OF SURVEY: BEGINNING June 5, 2002 ENDING Oct. 5, 2002	NAME OF SURVEYOR: Mullikin Surveys P.O. Box 790 Homer, AK 99603-0790
STATE OF ALASKA DEPARTMENT OF NATURAL RESOURCES, DIVISION OF MINING, LAND, AND WATER ANCHORAGE, ALASKA	
ALASKA STATE LAND SURVEY 2002-4	
WITHIN SURVEYED SECTIONS 2, 3, 10, 12, 13, 15, 16, 24, 25, 26 T.10S., R.8W., FM, ALASKA Nenana Recording District	
DRAWN BY: TLM DATE: 1/03/03	APPROVAL RECOMMENDED: <i>[Signature]</i> June 17, 2004 STATEWIDE PLATTING SUPERVISOR, DATE
SCALE: 1"=200'	CHECKED FILE NO: DEM ASLS 20020004

Nenana 2004-60

(See Sheet 3)



- LEGEND:**
- ⊗ GLO-BLM MONUMENT RECOVERED.
  - ⊙ PRIMARY MONUMENT SET THIS SURVEY.
  - ⊕ PRIMARY MONUMENT RECOVERED.
  - SECONDARY MONUMENT SET THIS SURVEY. SET 2" ALUM. CAP ON 5/8" REBAR, 4469-S, 2002.
  - SECONDARY MONUMENT RECOVERED.
  - ⊙ GEODETIC CONTROL MONUMENT RECOVERED.
  - (Rec.) RECORD BEARINGS & DISTANCES ARE GENERAL LAND OFFICE UNLESS OTHERWISE NOTED
  - SURVEYED LINE
  - - - UNSURVEYED LINE
  - · - VACATED SECTION LINE
  - - - EASEMENT LINE, SEE INDIVIDUAL LABELS

**TRACT-C**

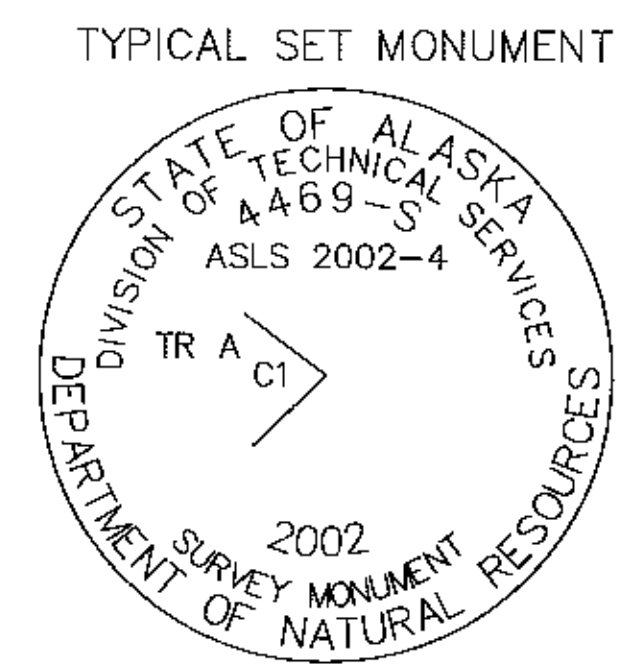
CORNER MONUMENT	DESCRIPTION	TREE	BEARING	DISTANCE
Corner 1	TR C C1	4" Birch	N 00'30" E	46.1'
		4" Birch	S 30'00" E	9.9'
		3" Birch	N 41'00" W	27.7'
Corner 2	TR C C2	4" Birch	N 01'00" E	21.9'
		4" Birch	S 84'00" E	51.2'
		4" Spruce	S 63'00" W	36.1'
Corner 3	TR C C3	2" Birch	N 20'00" E	35.1'
		2" Spruce	S 84'00" E	24.5'
		4" Birch	N 25'00" W	42.7'
Corner 4	T10S R8W R7W S13 S18 S24 S19	Recovered Original Pits, One In Each Section, 3 Foot Distance. (See Sheet 2 for monument descriptions.)		
Corner 5	ASLS 90-181 TR A C4 7622-S 1992	Rec. R.M. #1	South	50.0'
		Rec. R.M. #2	N 71'34" W	50.0'
Corner 6	ASLS 90-181 TR A C4 7622-S 1992	Rec. R.M. #1	S 71'34" E	50.0'
		Rec. R.M. #2	S 13'19" W	50.0'

**TRACT-D**

CORNER MONUMENT	DESCRIPTION	TREE	BEARING	DISTANCE
Corner 1	ASLS 90-181 TR B C1 7622-S 1992	R= 3" Spruce	S 88'12" E	9.6'
		R= 4" Birch	S 69'48" E	7.1'
		R= 4" Birch	S 06'36" W	11.9'
		R= 3" Birch	N 80'12" W	6.5'
Corner 2	TR D C2 TR E C1	4" Birch	N 21'00" E	68.4'
		4" Birch	N 53'00" E	56.2'
		3" Birch	S 70'00" W	141.2'
Corner 3	TR D C3 TR E C4	4" Aspen	N 11'00" E	18.7'
		4" Birch	N 75'00" E	26.6'
		4" Aspen	N 70'00" W	12.2'
Corner 4	TR D C4	4" Aspen	N 33'00" E	8.2'
		4" Aspen	S 17'00" E	16.1'
		8" Aspen	N 68'00" W	26.2'
Corner 5	TR D C5	4" Birch	N 56'00" W	17.4'
		6" Birch	N 51'00" E	47.5'
		4" Birch	S 63'00" E	22.0'
Corner 6	ASLS 90-181 TR B C2 7622-S 1992	Rec. R.M. #1	S 57'25" E	50.0'
		Rec. R.M. #2	N 09'38" E	50.0'

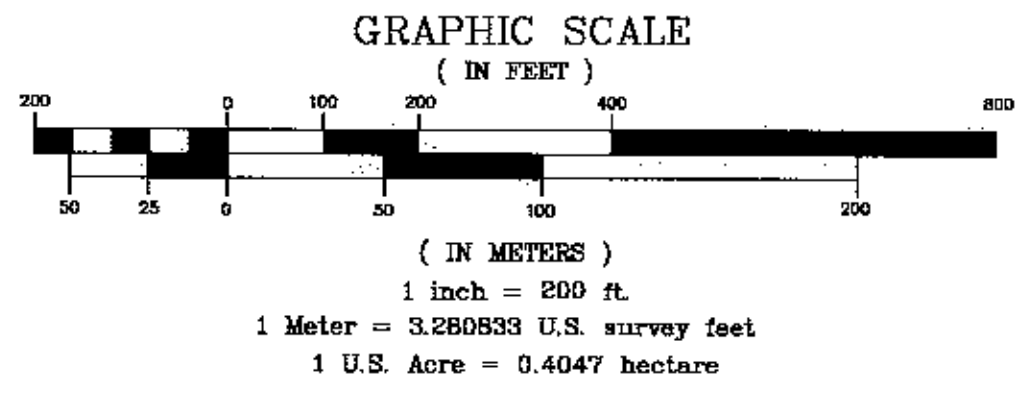
**TRACT-E**

CORNER MONUMENT	DESCRIPTION	TREE	BEARING	DISTANCE
Corner 1	TR D C2 TR E C1	4" Birch	N 21'00" E	68.4'
		4" Birch	N 53'00" E	56.2'
		3" Birch	S 70'00" W	141.2'
1/4	S24 S19 RBW R7W 1915	R.M.	S 49'00" E	30.0'
		5" Birch	N 46'00" E	111.0'
Corner 2	TR E C2	3" Birch	N 81'00" E	11.6'
		4" Aspen	S 07'30" E	21.4'
		3" Aspen	N 58'30" W	47.8'
Corner 3	TR E C3	4" Birch	S 35'00" E	19.8'
		5" Birch	S 36'00" W	11.0'
		4" Aspen	N 72'30" W	14.9'
Corner 4	TR D C3 TR E C4	4" Aspen	N 11'00" E	18.7'
		4" Birch	N 75'00" E	26.6'
		4" Aspen	N 70'00" W	12.2'

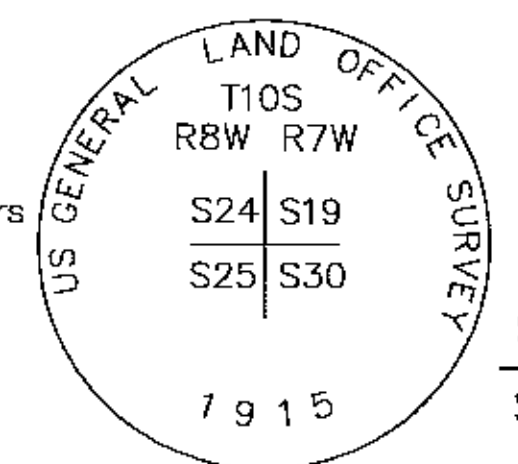


**MONUMENT NOTES**

Set primary monument symbol denotes a magnetized 3 1/4" Alum. Cap on 2 1/2" flanged Alum. pipe. Accessory Bearings are shown from monument to center of tree or object. New bearing trees were marked with a scribed "X" on blazes at the root crown and at breast height, and are marked with an aluminum tag. An orange fiberglass Carsonite stake was placed at each monument found or set.



Found B.C. on iron post, lying on side. Reset at base of post, 5" above the ground, from which: A 3" Aspen bears S 35'45" E, 29.96'; a 4" Aspen bears S 50'00" W, 45.30'; a 5" Aspen bears N 39'00" W, 18.80'.

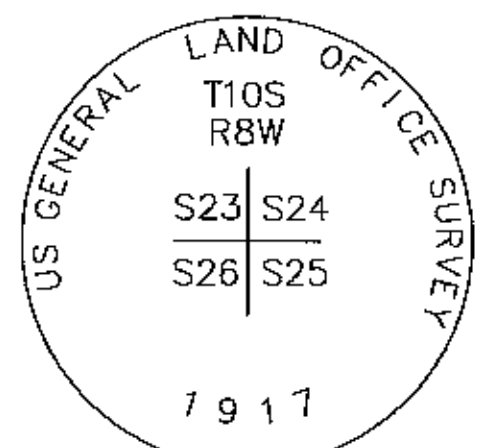


See Sheet 4

Nenana 2004-6

DATE OF SURVEY: BEGINNING June 5, 2002 ENDING Oct. 5, 2002	NAME OF SURVEYOR: Mullikin Surveys P.O. Box 790 Homer, AK 99603-0790
STATE OF ALASKA DEPARTMENT OF NATURAL RESOURCES, DIVISION OF MINING, LAND, AND WATER ANCHORAGE, ALASKA	
ALASKA STATE LAND SURVEY 2002-4	
WITHIN SURVEYED SECTIONS 2, 3, 10, 12, 13, 15, 16, 24, 25, 26 T.10S., R.8W., FM, ALASKA Nenana Recording District	
DRAWN BY: TLM DATE: 1/03/03	APPROVAL RECOMMENDED: <i>[Signature]</i> 1/2/2004 STATEWIDE PLATING SUPERVISOR, DATE
SCALE: 1"=200'	CHECKED FILE NO: DEM ASLS 20020004

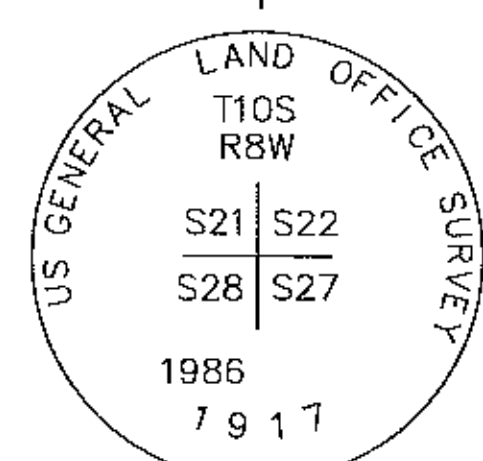




Found B.C. on iron pipe, 16" above ground, pits evident in each section. Set Carsonite marker by post.

Found 13" X 10" X 8" Granite stone, roughly pyramid shaped, 0.6' above the ground, no marks identifiable. In the stone, drilled a hole, cemented a 3/4" Alum. rod with 3 1/4" Alum. cap marked 4469-S 1/4 S24 S25 2003. From which: A mound of stones, 2.5' diameter, 1.5' high, bears N 14° W, 3.0'. New bearing trees: A 4" Aspen bears N 32°30' E, 14.7'; a 4" Aspen bears S 48°00' W, 4.3'; a 4" Birch bears N 19°00' W, 12.3'. Set Carsonite marker between mound and monument, located on the top of a poorly defined 5' to 8' high south slope in Aspen and Birch.

(See Sheet 5)

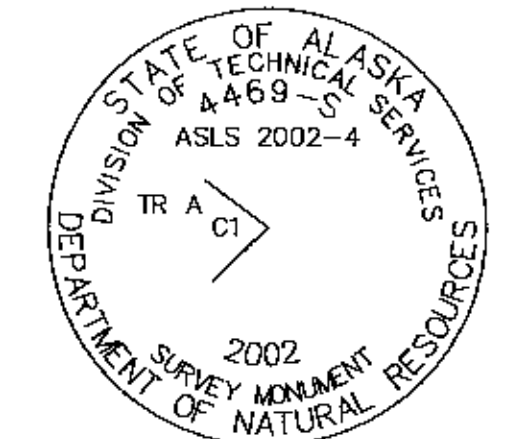


Found BC on iron pipe.

**LEGEND:**

- GLO-Blm MONUMENT RECOVERED.
- PRIMARY MONUMENT SET THIS SURVEY.
- PRIMARY MONUMENT RECOVERED.
- SECONDARY MONUMENT SET THIS SURVEY. SET 2" ALUM. CAP ON 5/8" REBAR, 4469-S, 2002.
- SECONDARY MONUMENT RECOVERED.
- GEODETIC CONTROL MONUMENT RECOVERED.
- (Rec.) RECORD BEARINGS & DISTANCES ARE GENERAL LAND OFFICE UNLESS OTHERWISE NOTED
- SURVEYED LINE
- UNSURVEYED LINE
- VACATED SECTION LINE
- EASEMENT LINE, SEE INDIVIDUAL LABELS

TYPICAL SET MONUMENT



**MONUMENT NOTES**

Set primary monument symbol denotes a magnetized 3 1/4" Alum. Cap on 2 1/2" flanged Alum. pipe. Accessory Bearings are shown from monument to center of tree or object. New bearing trees were marked with a scribed "X" on blazes at the root crown and at breast height, and are marked with an aluminum tag. An orange fiberglass Carsonite stake was placed at each monument found or set.

**TRACT-F**

CORNER MONUMENT	DESCRIPTION	TREE	BEARING	DISTANCE
Corner 1	C1 TR F	5" Spruce	N 66°00' E	137.7'
		3" Spruce	S 10°00' E	87.4'
		3" Spruce	S 86°00' W	39.5'
Corner 2	TR F C2	4" Spruce	N 47°00' E	26.9'
		4" Birch	S 58°30' W	56.1'
		6" Birch	N 84°45' W	71.7'
Corner 3	TR F C3	2" Spruce	N 02°00' E	61.9'
		5" Aspen	N 40°30' E	91.8'
		5" Aspen	N 79°00' W	113.1'
Corner 4	C4 TR F	6" Aspen	N 49°30' E	39.1'
		4" Aspen	S 09°00' E	26.9'
		5" Aspen	S 64°45' W	22.4'

**TRACT-G**

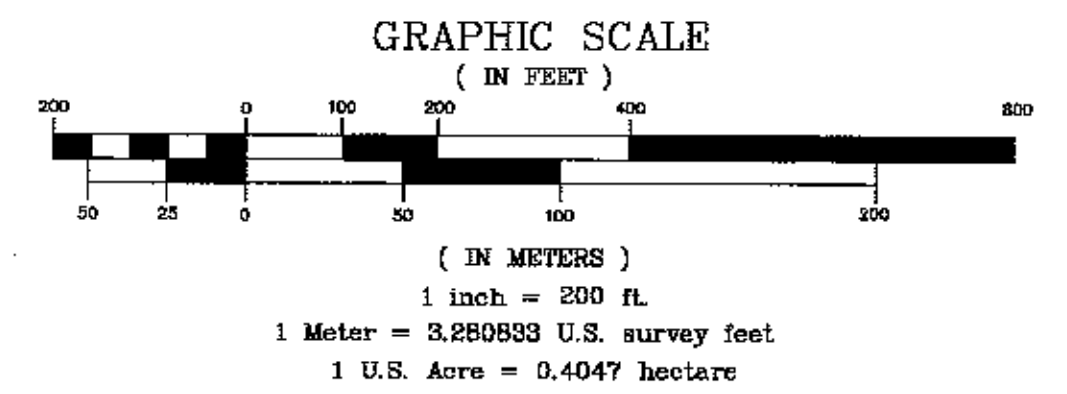
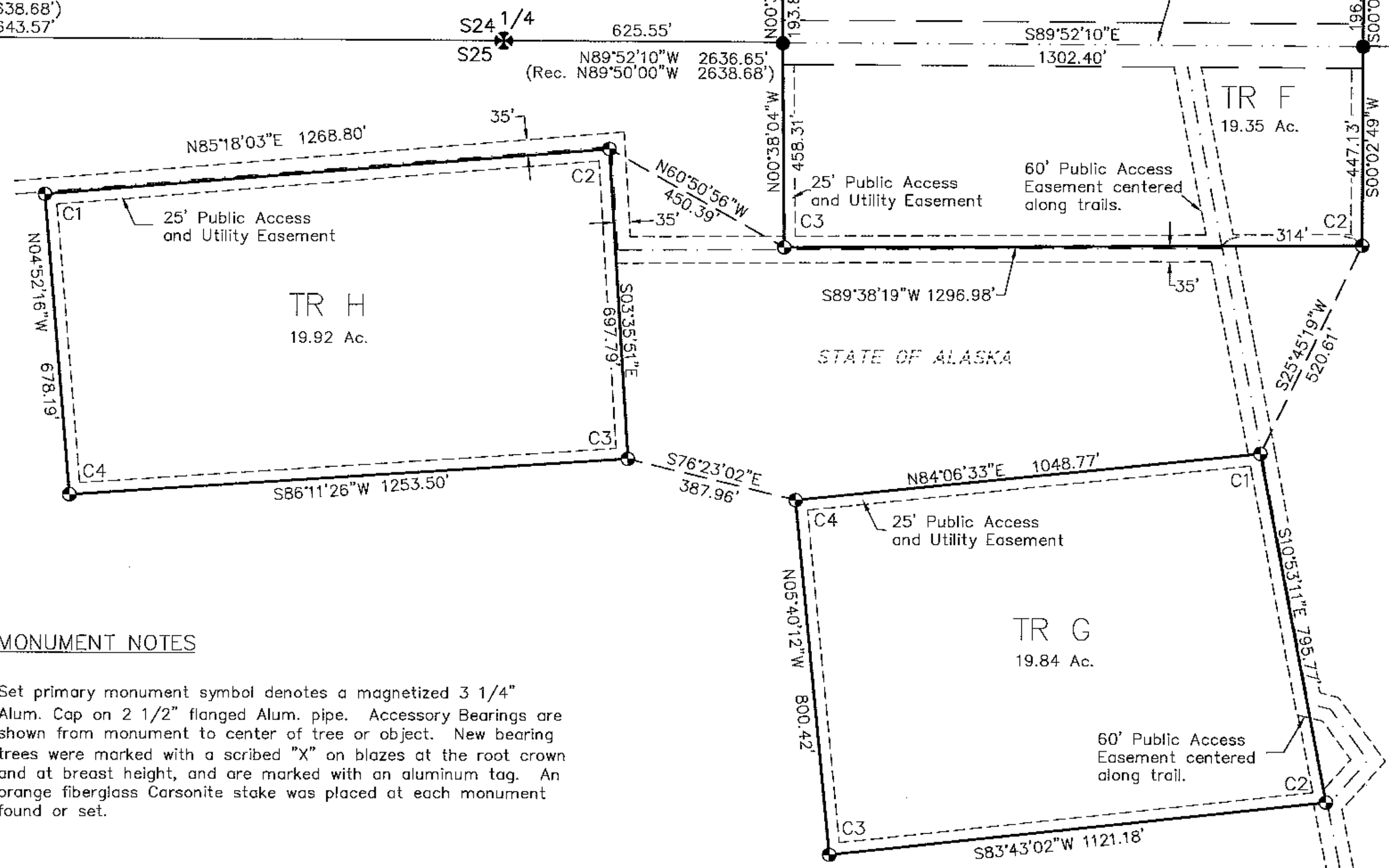
CORNER MONUMENT	DESCRIPTION	TREE	BEARING	DISTANCE
Corner 1	C1 TR G	4" Spruce	N 58°00' E	38.0'
		4" Spruce	S 34°30' E	46.3'
		5" Spruce	S 61°30' W	71.5'
Corner 2	TR G C2	5" Aspen	S 75°45' E	18.5'
		4" Spruce	S 11°00' W	26.0'
		3" Aspen	S 52°30' W	14.8'
Corner 3	TR G C3	3" Aspen	N 42°00' E	8.0'
		4" Spruce	S 40°00' W	28.5'
		3" Aspen	N 74°00' W	10.8'
Corner 4	C4 TR G	4" Spruce	S 89°00' E	15.6'
		3" Aspen	S 17°30' W	17.8'
		3" Spruce	N 86°00' W	26.8'

**TRACT-H**

CORNER MONUMENT	DESCRIPTION	TREE	BEARING	DISTANCE
Corner 1	C1 TR H	4" Aspen	S 24°00' E	12.6'
		4" Aspen	S 34°30' W	20.3'
		4" Birch	S 82°00' W	8.9'
Corner 2	TR H C2	4" Aspen	S 74°00' E	14.5'
		4" Aspen	S 30°30' W	16.2'
		7" Aspen	N 29°00' W	24.1'
Corner 3	TR H C3	4" Birch	S 88°00' E	53.9'
		4" Aspen	S 29°00' E	33.3'
		5" Birch	S 53°00' W	49.8'
Corner 4	TR H C4	5" Aspen	S 81°00' E	21.8'
		7" Aspen	S 69°00' W	23.8'
		5" Aspen	N 21°00' W	16.7'

**TRACT-I**

CORNER MONUMENT	DESCRIPTION	TREE	BEARING	DISTANCE
Corner 1	C1 TR I	4" Aspen	S 78°30' E	21.4'
		5" Aspen	S 26°00' W	46.1'
		5" Aspen	N 52°00' W	28.3'
Corner 2	TR I C2 1/4 S26 S25	4" Aspen	S 59°00' W	18.4'
		4" Aspen	N 18°00' W	20.1'
		4" Aspen	S 30°00' E	15.6'
Corner 3	TR I C3	R.M. #1	N 71°56' E	34.40'
		(Set 2" Al. Caps on #5 Rebars for R.M.s) R.M. #2	N 56°22' W	30.4'
Corner 4	C4 TR I	4" Aspen	N 43°30' E	40.1'
		4" Aspen	N 86°00' E	77.6'
		4" Aspen	S 79°30' E	69.0'



DATE OF SURVEY: BEGINNING June 5, 2002 ENDING Oct. 5, 2002	NAME OF SURVEYOR: Mullikin Surveys P.O. Box 790 Homer, AK 99603-0790
STATE OF ALASKA DEPARTMENT OF NATURAL RESOURCES, DIVISION OF MINING, LAND, AND WATER ANCHORAGE, ALASKA	
ALASKA STATE LAND SURVEY 2002-4	
WITHIN SURVEYED SECTIONS 2, 3, 10, 12, 13, 15, 16, 24, 25, 26 T.10S., R.8W., FM, ALASKA Nenana Recording District	
DRAWN BY: TLM DATE: 1/03/03	APPROVAL RECOMMENDED: <i>[Signature]</i> STATEWIDE PLATTING SUPERVISOR, DATE
SCALE: 1"=200'	CHECKED FILE NO: DEM ASLS 20020004

Nenana 2004-6

TRACT-J

LEGEND:

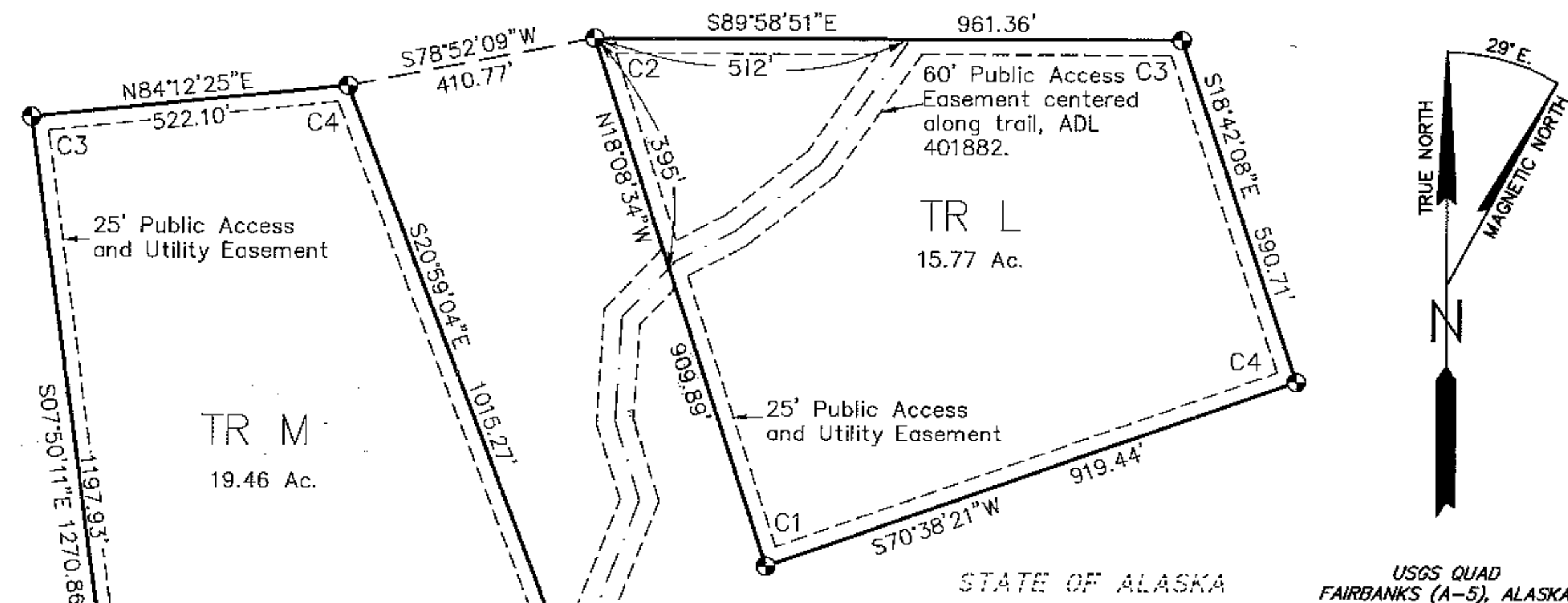
TRACT-L

CORNER MONUMENT	DESCRIPTION	TREE	BEARING	DISTANCE
Corner 1	TR J C1	4" Spruce 2" Spruce 2" Spruce	S 20'00" E S 29'15" W N 87'00" W	24.9' 24.8' 4.7'
Corner 2	C2 TR J	9" Aspen 4" Aspen 5" Spruce	S 50'30" E S 20'45" W N 60'00" W	10.6' 29.5' 45.4'
Corner 3	ASLS 89-216 COR.2 3796-S 1990	9" Spruce 6" Spruce R= 8" Poplar	N 03'30" E N 69'30" E S 04'00" E	51.7' 55.4' 59.1'
Corner 4	ASLS 89-216 P.O.L. 3796-S 1990	R= 9" Spruce R= 5" Spruce R= 6" Spruce	N 60'15" E S 66'45" E S 40'00" E	27.3' 21.5' 21.4'
Corner 5	T10S R8W S16 S21 S22 1986 1917	R= 6" Poplar R= 8" Spruce R= 6" Spruce R= 5" Spruce	N 71'45" E S 15'45" E S 57'45" W N 28'00" W	20.5' 44.2' 75.9' 34.3'

- ⊕ GLO-BLM MONUMENT RECOVERED.
  - ⊙ PRIMARY MONUMENT SET THIS SURVEY.
  - ⊕ PRIMARY MONUMENT RECOVERED.
  - SECONDARY MONUMENT SET THIS SURVEY.  
SET 2" ALUM. CAP ON 5/8" REBAR, 4469-S, 2002.
  - ⊙ SECONDARY MONUMENT RECOVERED.
  - ⊕ GEODETIC CONTROL MONUMENT RECOVERED.
- (Rec.) RECORD BEARINGS & DISTANCES ARE GENERAL LAND OFFICE UNLESS OTHERWISE NOTED
- SURVEYED LINE
  - - - UNSURVEYED LINE
  - - - VACATED SECTION LINE
  - - - EASEMENT LINE, SEE INDIVIDUAL LABELS

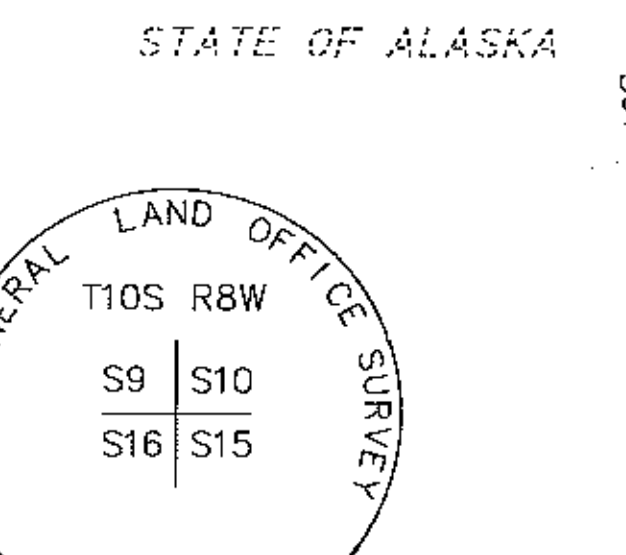
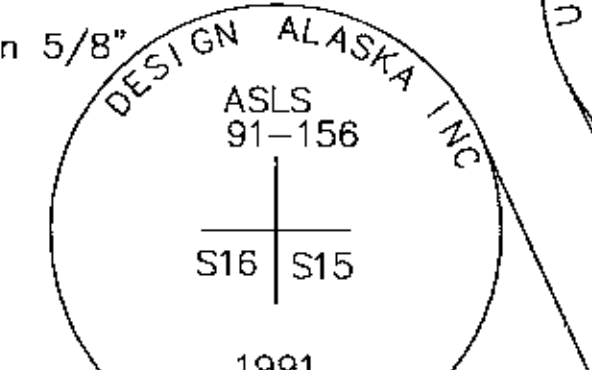
CORNER MONUMENT	DESCRIPTION	TREE	BEARING	DISTANCE
Corner 1	TR L C1	4" Aspen 7" Aspen 6" Aspen	N 12'30" E S 73'45" E N 57'30" W	32.2' 20.6' 40.0'
Corner 2	C2 TR L	4" Birch 6" Birch 4" Birch	N 16'00" E N 78'00" W N 43'00" W	28.0' 12.9' 36.7'
Corner 3	C3 TR L	3" Spruce 5" Aspen 4" Birch	S 60'00" E S 74'30" W N 7'00" W	10.3' 25.7' 24.6'
Corner 4	TR L C4	7" Aspen 4" Aspen 7" Aspen	S 82'30" E S 20'15" W N 42'00" W	14.1' 21.1' 20.4'

CORNER MONUMENT	DESCRIPTION	TREE	BEARING	DISTANCE
Corner 1	TR M C1	4" Aspen 4" Aspen 4" Aspen	N 89'00" E S 09'30" E N 32'45" W	6.6' 13.0' 25.5'
Corner 2	TR M C2	4" Aspen 4" Birch 6" Birch	N 47'30" E S 13'00" E N 08'45" E	20.1' 12.9' 41.3'
Corner 3	C3 TR M	6" Birch 7" Birch 7" Spruce	S 01'00" W S 90'00" W N 14'15" W	45.2' 30.7' 50.6'
Corner 4	C4 TR M	6" Spruce 4" Spruce 4" Spruce	S 07'30" W S 73'30" W N 08'00" W	30.9' 12.0' 11.2'
Corner 5	C5 TR M	7" Aspen 10" Aspen 9" Aspen	N 76'00" E S 16'30" W N 22'30" W	41.8' 18.8' 27.1'



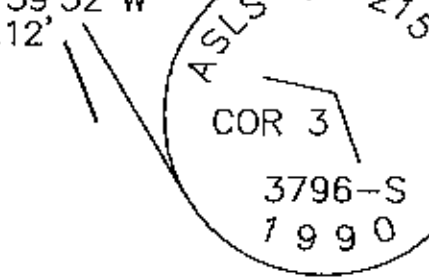
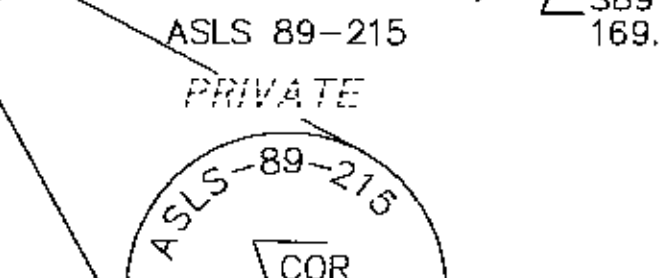
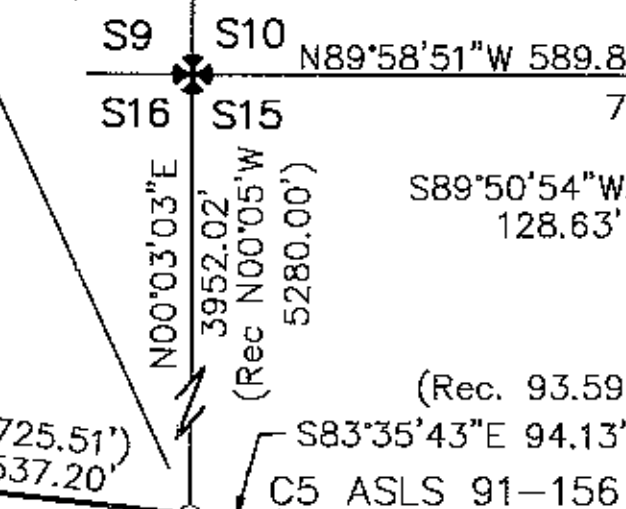
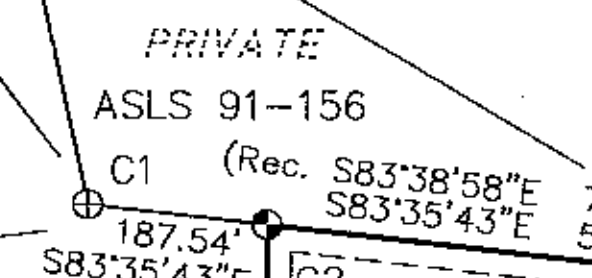
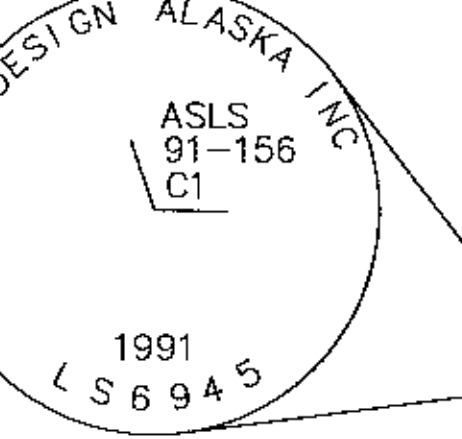
Found B.C. on iron pipe, 16" above ground, leaning. Plumbed and firmed pipe. New trees: 3" Spruce bears N 48'00" E, 45.52'; 3" Spruce bears S 45'30" E, 21.70'; 3" Spruce bears N 89'30" W, 40.58'.

Found 2" Alum. cap on 5/8" rebar, good condition.



Section line to be vacated, but 50' easement each side to remain.

60' Public Access Easement centered along trail, ADL No. 401882.



Found 3 1/4" cap on primary monument. Original trees and tags in good condition. Record measurements: 5" Spruce, S 18° E, 30.0'; 5" Spruce, S 7° W, 75.7'; 4" Cottonwood, N 35° W, 22.6'.

Section line to be vacated, but 50' easement each side to remain.

Found 2 1/2" Alum. Cap on 2 1/2" Alum. pipe, 10" above ground, in wet tussocks from which a new tree: A 3" Birch bears S 58'30" E, 25.52'. Set a 2" Alum. Cap on 5/8" rebar, bears North, 10.0'.

Found 2 1/2" Alum. Cap on 2 1/2" Alum. pipe, 10" above ground, from which: A 6" Aspen with tag bears S 44° E, 23.8'; an 11" Aspen with tag bears S 6° W, 23.3'; a 6" Aspen with tag bears N 60° W, 9.4'.

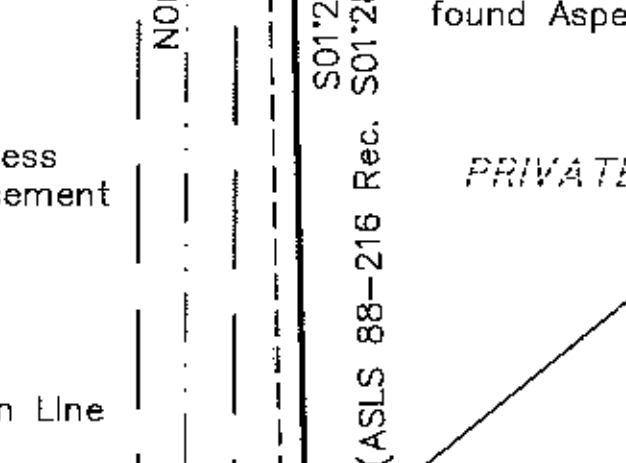
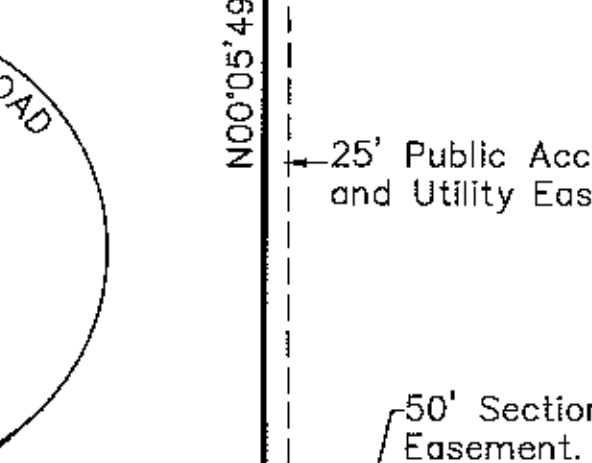
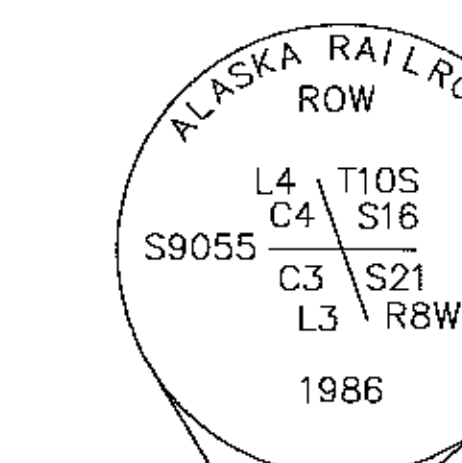
Found BC on iron pipe, 8" above ground, good condition. Record accessories not evident.

Found U.S. Department of Interior BLM Cadastral Survey monument, with a Spruce bearing tree evident, with tag marked N 39'34" E, 88 lks.

Section line to be vacated, but 50' easement each side to remain.

Found 2 1/2" cap on primary monument. Two original bearing trees destroyed. The remaining original tree record measurement: N 4'00" W, 59.1', found Aspen, record Poplar.

Found 2 1/2" cap on primary monument. See monument table, Tract J for accessories.



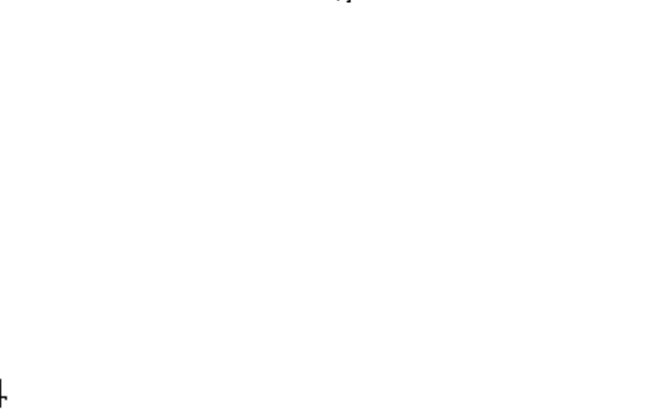
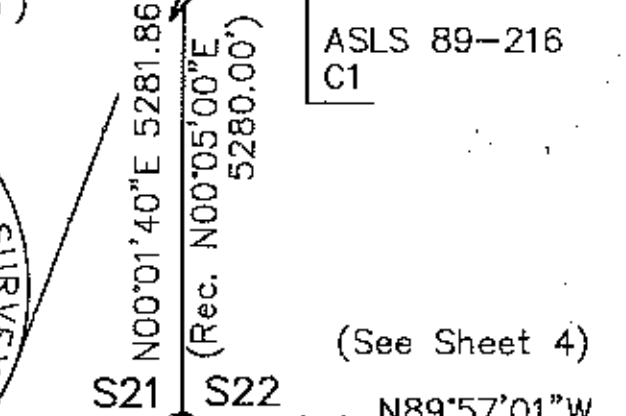
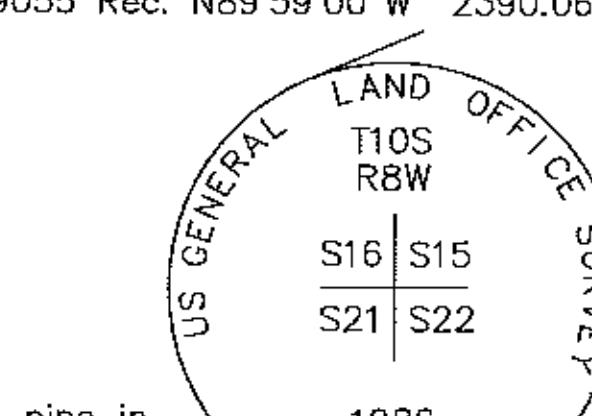
"JACKSON". Found 2" B.C. on "slip rod," 0.5' below the ground in block 4" ABS pipe with cap, marked "GPS No. JACKSON, 1990"

Found B.C. on iron pipe in good condition. See Tract J table for accessories.

Found 2 1/2" cap on primary monument. See monument table, Tract J for accessories.

Found 2 1/2" cap on primary monument. See monument table, Tract J for accessories.

Lat. 64°02'19.88206" N Long. 149°09'13.58186" W (Using Corpcson to derive these NAD 27 values).



Found B.C. on iron pipe in good condition. See Tract J table for accessories.

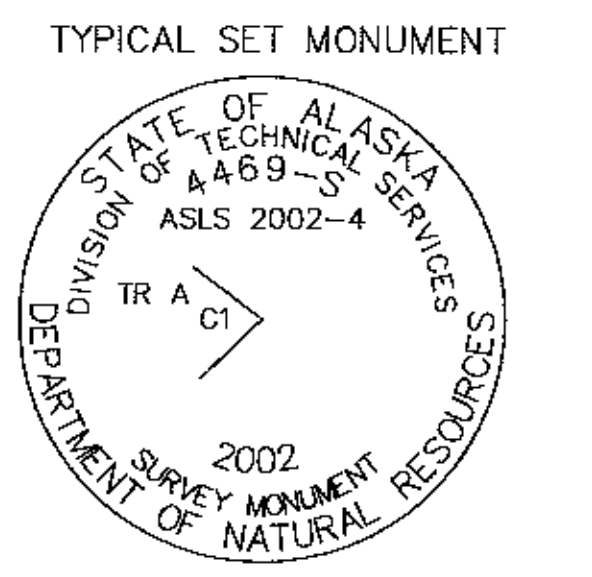
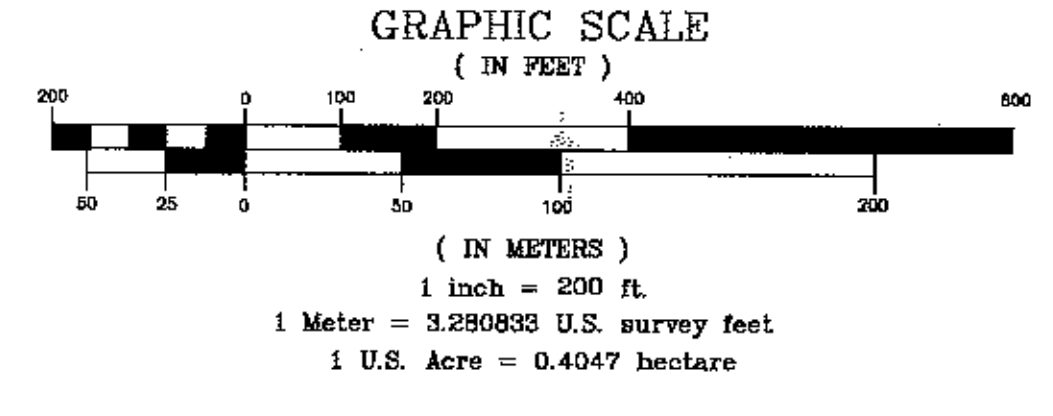
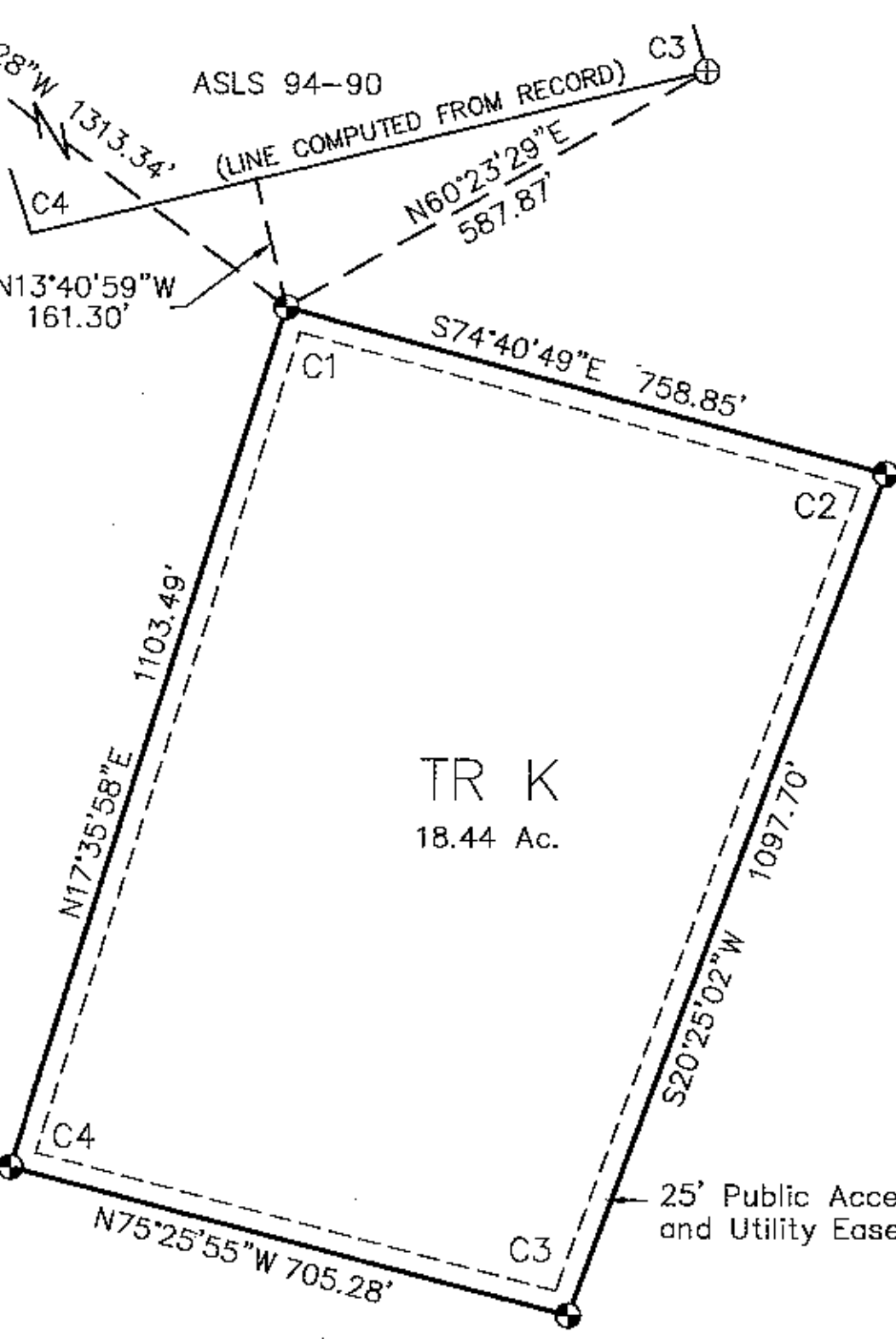
Found B.C. on iron pipe in good condition. See Tract J table for accessories.

Found 2 1/2" cap on primary monument. See monument table, Tract J for accessories.

Found 2 1/2" cap on primary monument. See monument table, Tract J for accessories.

TRACT-K

CORNER MONUMENT	DESCRIPTION	TREE	BEARING	DISTANCE
Corner 1	TR K C1	4" Aspen 4" Aspen 4" Aspen	N 28'00" W N 61'30" E S 10'00" E	32.6' 20.9' 26.7'
Corner 2	TR K C2	5" Spruce 6" Spruce 5" Spruce	S 86'00" W N 44'00" W N 64'30" E	76.2' 48.7' 37.8'
Corner 3	TR K C3	7" Aspen 4" Aspen 6" Aspen	S 00'30" W S 58'00" W N 04'00" W	41.4' 45.4' 40.7'
Corner 4	TR K C4	4" Aspen 4" Aspen 5" Aspen	S 53'30" W N 67'00" E S 24'30" E	41.1' 21.9' 30.4'



MONUMENT NOTES

Set primary monument symbol denotes a magnetized 3 1/4" Alum. Cap on 2 1/2" flanged Alum. pipe. Accessory Bearings are shown from monument to center of tree or object. New bearing trees were marked with a scribed "X" on blazes at the root crown and at breast height, and are marked with an aluminum tag. An orange fiberglass Carsonite stake was placed at each monument found or set.

DATE OF SURVEY: BEGINNING June 5, 2002 ENDING Oct. 5, 2002	NAME OF SURVEYOR: Mullikin Surveys P.O. Box 780 Homer, AK 99603-0790
STATE OF ALASKA DEPARTMENT OF NATURAL RESOURCES, DIVISION OF MINING, LAND, AND WATER ANCHORAGE, ALASKA	
ALASKA STATE LAND SURVEY 2002-4	
WITHIN SURVEYED SECTIONS 2, 3, 10, 12, 13, 15, 16, 24, 25, 26 T.10S., R.8W., FM, ALASKA Nenana Recording District	
DRAWN BY: TLM DATE: 1/03/03	APPROVAL RECOMMENDED: STATEWIDE PLATTING SUPERVISOR, DATE
SCALE: 1"=200'	CHECKED FILE NO: DEM ASLS 20020004

Nenana 2004-6



APPLICANT'S CERTIFICATE

I, the undersigned, hereby certify that I am the applicant as shown hereon. I hereby approve this survey and plat.

TRACT No. "A", ADL No. 41671Z

Susan McNeil Date: P.O. Box 369, Nenana, AK 99760

NOTARY'S ACKNOWLEDGEMENT

Subscribed and sworn before me this day of 2003 for

Notary Public for Alaska My Commission Expires:

APPLICANT'S CERTIFICATE

I, the undersigned, hereby certify that I am the applicant as shown hereon. I hereby approve this survey and plat.

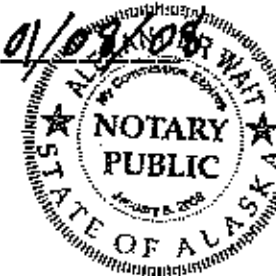
TRACT No. "B", ADL No. 416724

Michael Keith Date: 3-26-04 P.O. Box 88, Healy, AK 99743

NOTARY'S ACKNOWLEDGEMENT

Subscribed and sworn before me this day of March 2004 for

Notary Public for Alaska My Commission Expires:



APPLICANT'S CERTIFICATE

I, the undersigned, hereby certify that I am the applicant as shown hereon. I hereby approve this survey and plat.

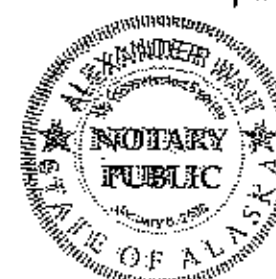
TRACT No. "C", ADL No. 416674

Albert David Totin Date: 1-Apr-04 Box 61014, Fairbanks, AK 99706

NOTARY'S ACKNOWLEDGEMENT

Subscribed and sworn before me this day of April 2004 for

Notary Public for Alaska My Commission Expires:



APPLICANT'S CERTIFICATE

I, the undersigned, hereby certify that I am the applicant as shown hereon. I hereby approve this survey and plat.

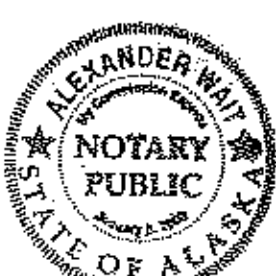
TRACT No. "D", ADL No. 416695.

Juanita E. Phillips Date: 3-25-2004 P.O. Box 30859, Anderson, AK 99744

NOTARY'S ACKNOWLEDGEMENT

Subscribed and sworn before me this day of Feb 2004 for

Notary Public for Alaska My Commission Expires:



APPLICANT'S CERTIFICATE

I, the undersigned, hereby certify that I am the applicant as shown hereon. I hereby approve this survey and plat.

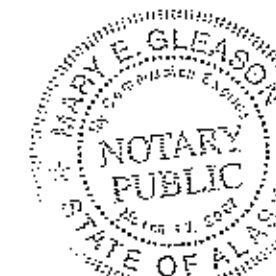
TRACT No. "E", ADL No. 416703

Rene P. Koumal Date: 03-26-04 P.O. Box 82779, Fairbanks, AK 99708

NOTARY'S ACKNOWLEDGEMENT

Subscribed and sworn before me this day of March 2004 for

Notary Public for Alaska My Commission Expires:



APPLICANT'S CERTIFICATE

I, the undersigned, hereby certify that I am the applicant as shown hereon. I hereby approve this survey and plat.

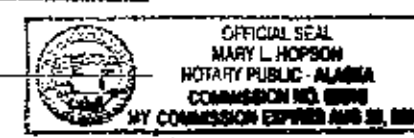
TRACT No. "F", ADL No. 416675

Scott B. Anderson Date: 1-15-04 P.O. Box 9828, Ketchikan, AK 99901

NOTARY'S ACKNOWLEDGEMENT

Subscribed and sworn before me this day of January 2004 for

Notary Public for Alaska My Commission Expires:



APPLICANT'S CERTIFICATE

I, the undersigned, hereby certify that I am the applicant as shown hereon. I hereby approve this survey and plat.

TRACT No. "H", ADL No. 416685.

Roland J. Ouellette Date: 2/27/04 2104 Rickert St., Fairbanks, AK 99701

NOTARY'S ACKNOWLEDGEMENT

Subscribed and sworn before me this day of February 2004 for

Notary Public for Alaska My Commission Expires:



APPLICANT'S CERTIFICATE

I, the undersigned, hereby certify that I am the applicant as shown hereon. I hereby approve this survey and plat.

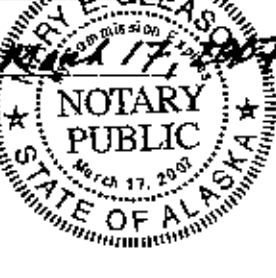
TRACT No. "I", ADL No. 416693.

Emmaline J. Venchuk Date: 09 JUN 04 University of Notre Dame, Notre Dame, IN 46556

NOTARY'S ACKNOWLEDGEMENT

Subscribed and sworn before me this day of June 2004 for

Notary Public for Alaska My Commission Expires:



APPLICANT'S CERTIFICATE

I, the undersigned, hereby certify that I am the applicant as shown hereon. I hereby approve this survey and plat.

TRACT No. "J", ADL No. 416664.

Jonathan Bessette Date: 3/1/04 HC 1, Box 3103, Healy, AK 99743

NOTARY'S ACKNOWLEDGEMENT

Subscribed and sworn before me this day of March 2004 for

Notary Public for Alaska My Commission Expires:



APPLICANT'S CERTIFICATE

I, the undersigned, hereby certify that I am the applicant as shown hereon. I hereby approve this survey and plat.

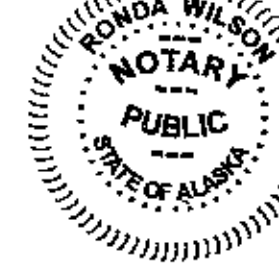
TRACT No. "K", ADL No. 416719.

Joy Stanley Date: 1/28/04 P.O. Box 772541, Eagle River, AK 99577

NOTARY'S ACKNOWLEDGEMENT

Subscribed and sworn before me this day of January 2004 for

Notary Public for Alaska My Commission Expires:



APPLICANT'S CERTIFICATE

I, the undersigned, hereby certify that I am the applicant as shown hereon. I hereby approve this survey and plat.

TRACT No. "L", ADL No. 416658.

Thomas James Take III Date: 5-04-04 P.O. Box 60, Healy, AK 99743

NOTARY'S ACKNOWLEDGEMENT

Subscribed and sworn before me this day of May 2004 for

Notary Public for Alaska My Commission Expires:



APPLICANT'S CERTIFICATE

I, the undersigned, hereby certify that I am the applicant as shown hereon. I hereby approve this survey and plat.

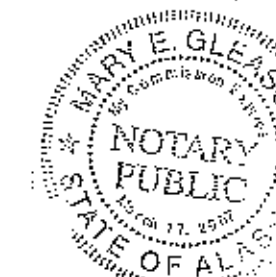
TRACT No. "M", ADL No. 416656.

Laurence K. Lake Date: 2-24-04 HC 1, Box 3108, Healy, AK 99743

NOTARY'S ACKNOWLEDGEMENT

Subscribed and sworn before me this day of February 2004 for

Notary Public for Alaska My Commission Expires:



CERTIFICATE OF OWNERSHIP AND DEDICATION

I, the undersigned, hereby certify that I am the Director, Division of Mining, Land and Water, and that the State of Alaska is the owner of ASLS 2002-4 as shown hereon. I hereby approve this survey and plat for the State of Alaska, and dedicate for public or private use as noted, all easements, public utility areas, and rights-of-way as shown and described hereon.

Dated 6-18-04, 2004

Sandra Singer Director, Division of Mining, Land and Water

NOTARY'S ACKNOWLEDGEMENT

Subscribed and sworn before me this day of JUNE 2004 for

Notary Public for Alaska My Commission Expires:

Notary Public for Alaska My Commission Expires: 1-9-05



SURVEYOR'S CERTIFICATE

I hereby certify that I am properly registered and licensed to practice land surveying in the State of Alaska, that this plat represents a survey made by me or under my direct supervision, that the monuments shown hereon actually exist as described, and that all dimensions and other details are correct.

Date: 12/10/03 Registration No.: 4469-S Donald E. Mullikin, Registered Land Surveyor



TAX STATEMENT

THIS SUBDIVISION LIES WITHIN THE DENALI BOROUGH AND IS NOT SUBJECT TO TAXATION AT THIS TIME.

CERTIFICATE OF SUBDIVISION APPROVAL

THIS SUBDIVISION HAS BEEN REVIEWED AND FOUND TO BE IN COMPLIANCE WITH THE DENALI BOROUGH PLATTING ORDINANCE No. 96-22 AND THE APPLICABLE PROVISIONS OF THE LAW AND IS HEREBY APPROVED.

DATE: 7-6-04 DENALI BOROUGH APPROVING OFFICIAL

DATE OF SURVEY: BEGINNING June 5, 2002 ENDING Oct. 5, 2002	NAME OF SURVEYOR: Mullikin Surveys P.O. Box 790 Homer, AK 99603-0790
STATE OF ALASKA DEPARTMENT OF NATURAL RESOURCES, DIVISION OF MINING, LAND, AND WATER ANCHORAGE, ALASKA	
ALASKA STATE LAND SURVEY 2002-4	
WITHIN SURVEYED SECTIONS 2, 3, 10, 12, 13, 15, 16, 24, 25, 26 T.10S., R.8W., FM, ALASKA Nenana Recording District	
DRAWN BY: TLM DATE: 1/03/03	APPROVAL RECOMMENDED: DATE: 1/03/03
SCALE: 1"=200'	CHECKED FILE NO: DEM ASLS 20020004

2004-6  
Nenana REC DIST  
DATE 7-14-2004  
TIME 3:12 P.M.  
Requested By ASIDNR  
Address