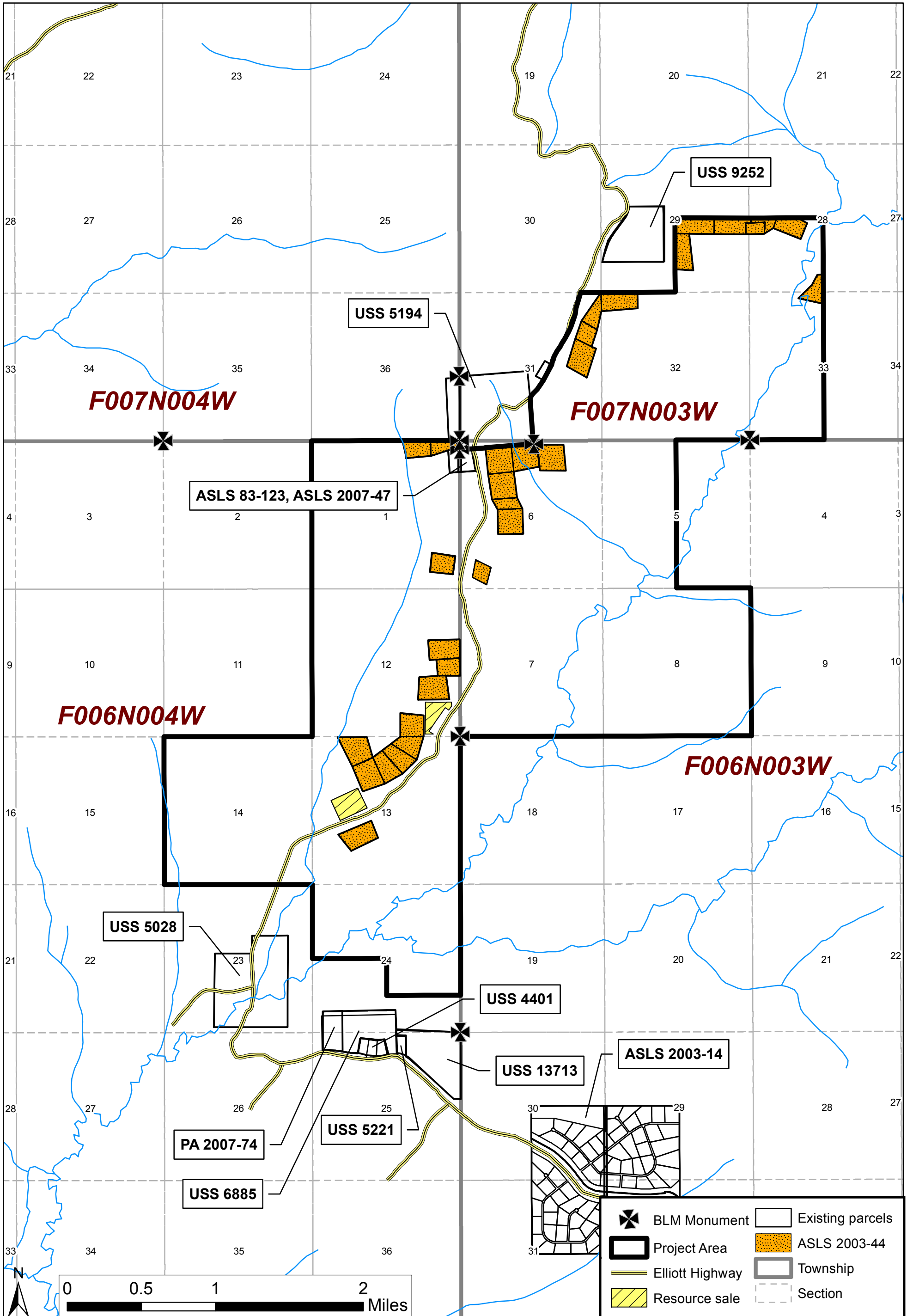




# Survey Key: Tatalina II RRCS

Remote Recreational Cabin Sites Staking Area # 1114102



## TATALINA II STAKING MAP SURVEYS

The links below are for existing surveys in the Tatalina II staking area vicinity available online from Alaska Land Records. You will need Adobe Acrobat or a similar PDF viewer to view the plats.

### Township 7 North, Range 3 West, Fairbanks Meridian

*US Rectangular Survey (USRS)*

[http://dnr.alaska.gov/mlw/landsale/remrec/surveys/TWP\\_F007N003W.pdf](http://dnr.alaska.gov/mlw/landsale/remrec/surveys/TWP_F007N003W.pdf)

*Alaska State Land Survey (ASLS) 2003-44*

<http://dnr.alaska.gov/mlw/landsale/remrec/surveys/asls2003-44.pdf>

*United States Survey (USS) 9252*

[http://dnr.alaska.gov/mlw/landsale/remrec/surveys/USS\\_9252.pdf](http://dnr.alaska.gov/mlw/landsale/remrec/surveys/USS_9252.pdf)

*USS 5194*

[http://dnr.alaska.gov/mlw/landsale/remrec/surveys/USS\\_5194.pdf](http://dnr.alaska.gov/mlw/landsale/remrec/surveys/USS_5194.pdf)

### Township 6 North, Range 3 West, Fairbanks Meridian

*USRS*

[http://dnr.alaska.gov/mlw/landsale/remrec/surveys/TWP\\_F006N003W.pdf](http://dnr.alaska.gov/mlw/landsale/remrec/surveys/TWP_F006N003W.pdf)

*ASLS 83-123*

<http://dnr.alaska.gov/mlw/landsale/remrec/surveys/asls83-123.pdf>

*ASLS 2003-44*

<http://dnr.alaska.gov/mlw/landsale/remrec/surveys/asls2003-44.pdf>

*ASLS 2003-14*

<http://dnr.alaska.gov/mlw/landsale/remrec/surveys/asls2003-14.pdf>

*ASLS 2007-47*

<http://dnr.alaska.gov/mlw/landsale/remrec/surveys/asls2007-47.pdf>

USS 5194

[http://dnr.alaska.gov/mlw/landsale/remrec/surveys/USS\\_5194.pdf](http://dnr.alaska.gov/mlw/landsale/remrec/surveys/USS_5194.pdf)

Township 6 North, Range 4 West, Fairbanks Meridian

USRS

[http://dnr.alaska.gov/mlw/landsale/remrec/surveys/TWP\\_F006N004W.pdf](http://dnr.alaska.gov/mlw/landsale/remrec/surveys/TWP_F006N004W.pdf)

ASLS 83-123

<http://dnr.alaska.gov/mlw/landsale/remrec/surveys/asls83-123.pdf>

ASLS 2003-44

<http://dnr.alaska.gov/mlw/landsale/remrec/surveys/asls2003-44.pdf>

*Platting Authority (PA) 2007-74*

[http://dnr.alaska.gov/mlw/landsale/remrec/surveys/Tatalina\\_PA2007-74.pdf](http://dnr.alaska.gov/mlw/landsale/remrec/surveys/Tatalina_PA2007-74.pdf)

USS 5194

[http://dnr.alaska.gov/mlw/landsale/remrec/surveys/USS\\_5194.pdf](http://dnr.alaska.gov/mlw/landsale/remrec/surveys/USS_5194.pdf)

USS 5028

[http://dnr.alaska.gov/mlw/landsale/remrec/surveys/USS\\_5028.pdf](http://dnr.alaska.gov/mlw/landsale/remrec/surveys/USS_5028.pdf)

USS 4401

[http://dnr.alaska.gov/mlw/landsale/remrec/surveys/USS\\_4401.pdf](http://dnr.alaska.gov/mlw/landsale/remrec/surveys/USS_4401.pdf)

USS 6885

[http://dnr.alaska.gov/mlw/landsale/remrec/surveys/USS\\_6885.pdf](http://dnr.alaska.gov/mlw/landsale/remrec/surveys/USS_6885.pdf)

USS 5221

[http://dnr.alaska.gov/mlw/landsale/remrec/surveys/USS\\_5221.pdf](http://dnr.alaska.gov/mlw/landsale/remrec/surveys/USS_5221.pdf)

USS 13713

[http://dnr.alaska.gov/mlw/landsale/remrec/surveys/USS\\_13713.pdf](http://dnr.alaska.gov/mlw/landsale/remrec/surveys/USS_13713.pdf)