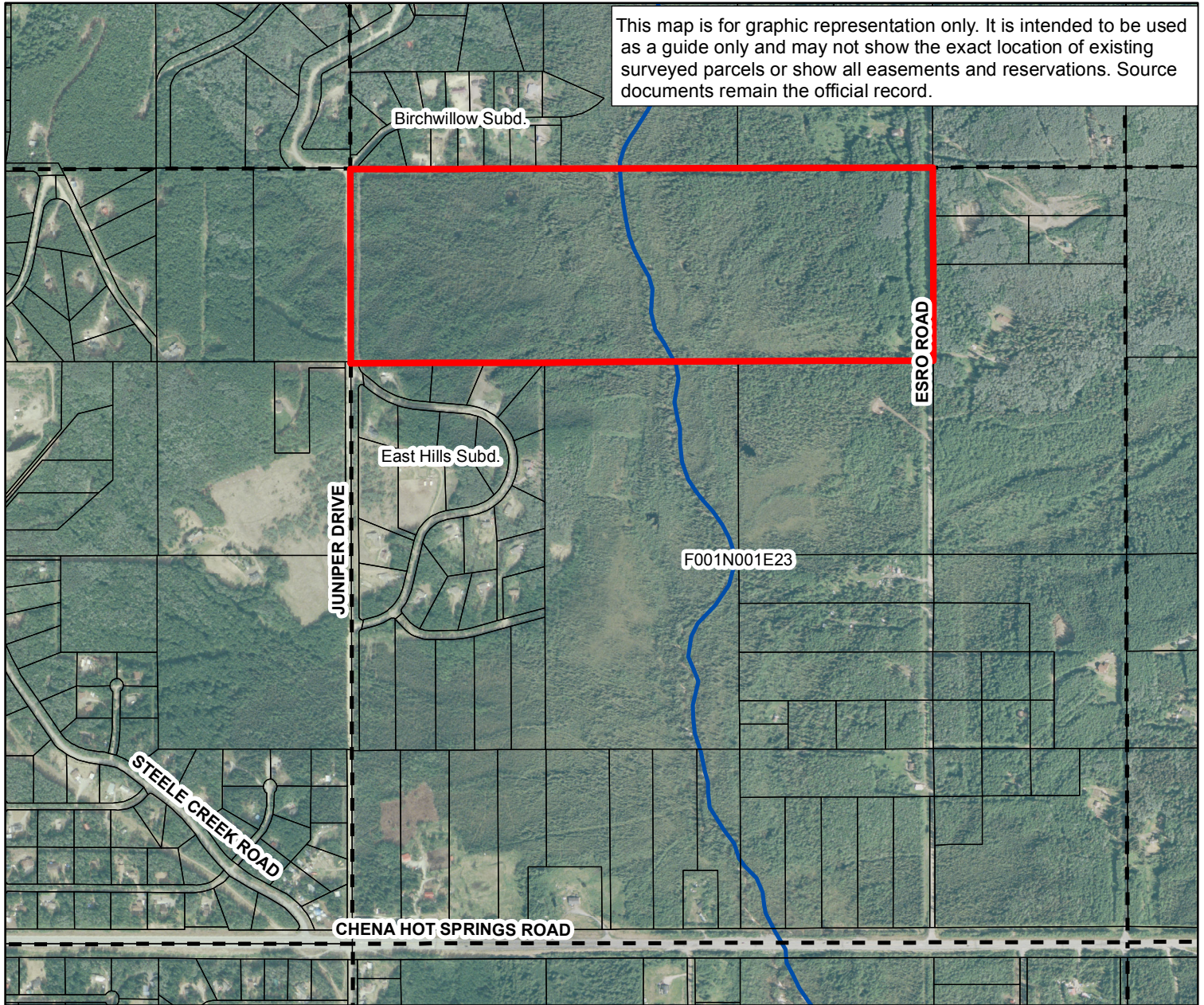


Steele Hollow Subdivision ADL 420416

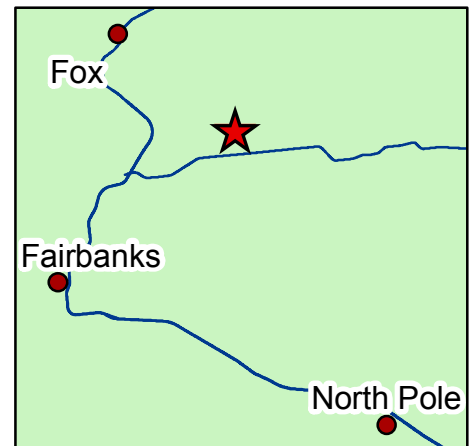
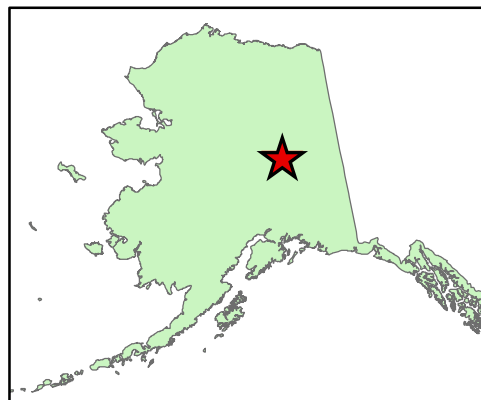


This map is for graphic representation only. It is intended to be used as a guide only and may not show the exact location of existing surveyed parcels or show all easements and reservations. Source documents remain the official record.



- Project_Area
- Section
- Steele Creek

Township 1 North, Range 1 East,
Section 23, Fairbanks Meridian



USGS QUAD 1:63,360

Fairbanks D-1 and D-2
For more information contact:
Nikki Potter
Department of Natural Resources
Division of Mining, Land, and Water
Land Sales & Contract Administration Section
Phone 907.451.2730
Fax 907.451.2751
Email subdivision.sales@alaska.gov